



#HerNaturalHistory

A collaboration

Siobhan Leachman

Wikipedia: User:Ambrosia10

Twitter: @SiobhanLeachman

Telegram: @siobhanleachman

Slides: <http://bit.ly/HNHWikidataCon>



Overview of presentation



Improve coverage



Notability



Foot
in the
door



Women in Natural History

Image by Matilda Smith via BHL. Public Domain in the US.

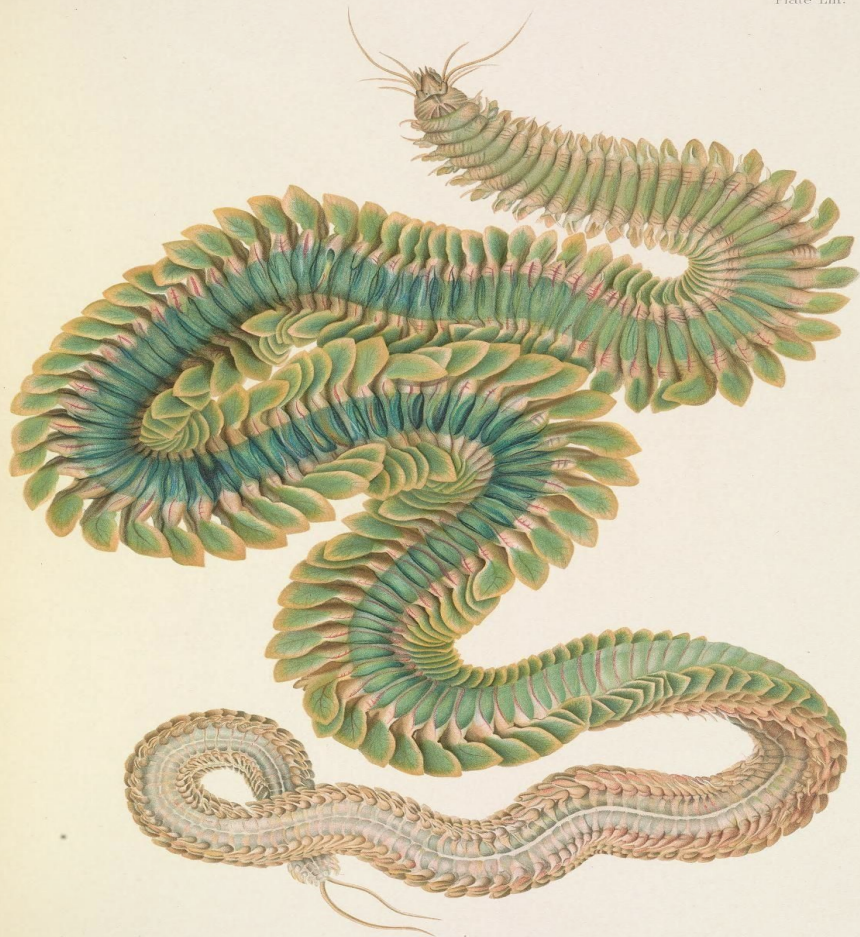


Morchella esculenta, DC.

in stone by Keene Brothers

J. H. 20

Biodiversity Heritage Library



So
MANY
women

Wikipedia article!

Elinor Frances Vallentin

From Wikipedia, the free encyclopedia

Elinor Frances Vallentin (formerly **Nichol**; (*née* **Bertrand**)^[1] (1873, Falkland Islands – 1924, Plympton, Devon)^[2] was a British **botanist** and **botanical illustrator** who made scientifically significant collections of botany specimens in the **Falkland Islands**. She co-authored the book *Illustrations of the flowering plants and ferns of the Falkland Islands* in 1921 with **Enid Mary Cotton**, a fellow botanist. This work was regarded as being particularly valuable because of Vallentin's botanical illustrations.

Contents [hide]

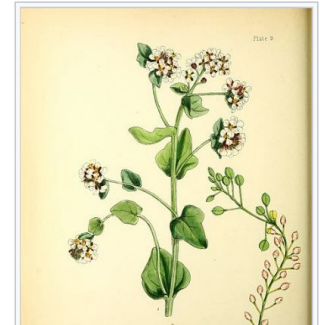
- 1 Plant collecting
- 2 Illustrations
- 3 Family
- 4 Publications
- 5 References
- 6 External links

Plant collecting [edit]

Vallentin grew up at **Roy Cove** and at Shallow Bay in **West Falkland**^[3]. While living there she collected and studied the plant life in the surrounding area.^[4] From November 1909 to March 1911 she collected numerous specimens from various sites on West Falkland,^[5] which are now held at the **British Museum**, **Royal Botanical Gardens, Kew** and the **Manchester Museum**. She also assembled collections of seaweeds that were particularly valuable scientifically. She collaborated with **Arthur Disbrowe Cotton**, supplying him with specimens, and enabling him to undertake the first comprehensive study of **Cryptogams** from the Falkland Islands.^[4]

Elinor Frances Vallentin

Born	1873 <div>Falkland Islands</div>
Died	1924 <div>Plympton, Devon</div>
Other names	Elinor Frances Bertrand
	Scientific career
Fields	botany



Google sheets

	A	B	C	D	E	F	G	H	I	J	K
1	Last name	First name	VIAF	Type	Artist Machine Tag	VIAF Machine Tag	Wikidata tag	BHL Creator	Notes/engraver tag	Wikipedia	Wikidata
2	Acarie-Baron	Jacques Reyr	76224875	Scientific Illustrator	artist.name="Jacques Reyr artist.viaf=76224875			None		No	https://www.wikidata.org/wiki/Q114114
3	Achilles	Charles		lithographer	lithographer.name="Charles Achilles"			None			
4	Adams	Arthur	90770581	Scientific Illustrator	artist.name="Arthur Adams artist.viaf=90770581			5846		https://en.wikipedia.org/wiki/Arthur_Adams	https://www.wikidata.org/wiki/Q114114
5	Albin	Eleazar	347904	Scientific Illustrator	artist.name="Eleazar Albin' artist.viaf=347904			26525		https://en.wikipedia.org/wiki/Eleazar_Albin	https://www.wikidata.org/wiki/Q114114
6	Alcalde	M		Scientific Illustrator	artist.name="M. Alcalde"			None			
7	Aldin	Cecil	73845355	Book Illustrator	artist.name="Cecil Aldin" artist.viaf=73845355			None		https://en.wikipedia.org/wiki/Cecil_Aldin	https://www.wikidata.org/wiki/Q114114
8	Alton	Eduard d'	32798307	Scientific Illustrator	artist.name="Eduard d'Alto artist.viaf=32798307			None		https://en.wikipedia.org/wiki/Eduard_d'_Alto	https://www.wikidata.org/wiki/Q114114
9	Andrews	Henry Charles	21033285	Scientific Illustrator	artist.name="Henry Charles artist.viaf=21033285			None		https://en.wikipedia.org/wiki/Henry_Charles_Andrews	https://www.wikidata.org/wiki/Q114114
10	Andrews	James		Scientific Illustrator	artist.name="James Andrew artist.viaf=						
11	Angas	George Franc	34728052	Book Illustrator	artist.name="George Franc artist.viaf=34728052			70021		https://en.wikipedia.org/wiki/George_Francis_Angas	https://www.wikidata.org/wiki/Q114114
12	Annedouche	Alfred Joseph	7209254	Scientific Illustrator	artist.name="Alfred Joseph artist.viaf=7209254			35908		No	https://www.wikidata.org/wiki/Q114114
13	Archer	William	12658270	Scientific Illustrator	artist.name="William Arche artist.viaf=12658270			None		https://en.wikipedia.org/wiki/William_Archer	https://www.wikidata.org/wiki/Q114114
14	Armstrong	Margaret	10234567	Scientific Illustrator	artist.name="Margaret Arm artist.viaf=10234567			25784		https://en.wikipedia.org/wiki/Margaret_Armstrong	https://www.wikidata.org/wiki/Q114114
15	Atkinson	Esmond Hurv	21863883	Photographer	artist.name="Esmond Atkir artist.viaf=21863883			None		No	https://www.wikidata.org/wiki/Q114114
16	Audubon	John James	14765625	Scientific Illustrator	artist.name="John James / artist.viaf=14765625			5529		https://en.wikipedia.org/wiki/John_James_Audubon	https://www.wikidata.org/wiki/Q114114
17	Audubon	John Woodhc	29446802	Scientific Illustrator	artist.name="John Woodhc artist.viaf=29446802			11561		No	https://www.wikidata.org/wiki/Q114114
18	Austen	Winifred	29382143	Book Illustrator	artist.name="Winifred Aust artist.viaf=29382143			209921		https://en.wikipedia.org/wiki/Winifred_Austen	https://www.wikidata.org/wiki/Q114114
19	Bacon	Peggy	8456354	Book Illustrator	artist.name="Peggy Bacon artist.viaf=8456354			None		https://en.wikipedia.org/wiki/Peggy_Bacon	https://www.wikidata.org/wiki/Q114114
20	Badger	Clarissa Mun	10295171	Scientific Illustrator	artist.name="Clarissa Mun artist.viaf=10295171	illustrator.wikidata		222121	Images from https://www.wikimedia.org/wiki/File:Clarissa_Mun_Badger.jpg	https://en.wikipedia.org/wiki/Clarissa_Mun_Badger	https://www.wikidata.org/wiki/Q114114
21	Bagchi	D. N.		Scientific Illustrator	artist.name="D. N. Bagchi"			None		No	https://www.wikidata.org/wiki/Q114114
22	Barnard	Anne Henslov	No	Scientific Illustrator	artist.name="Anne Henslov No			NEEDED		https://en.wikipedia.org/wiki/Anne_Henslov_Barnard	https://www.wikidata.org/wiki/Q114114
23	Bartholomew	Arthur	46198051	Scientific Illustrator	artist.name="Arthur Bartho artist.viaf=46198051			None		https://en.wikipedia.org/wiki/Arthur_Bartholomew	https://www.wikidata.org/wiki/Q114114
24	Bartusch	Gertrud		Scientific Illustrator	artist.name="Gertrud Bartusch"			NEEDED		https://en.wikipedia.org/wiki/Gertrud_Bartusch	https://www.wikidata.org/wiki/Q114114
25	Bauer	Ferdinand	47623750	Scientific Illustrator	artist.name="Ferdinand Ba artist.viaf=47623750			450 & 183513		https://en.wikipedia.org/wiki/Ferdinand_Bauer	https://www.wikidata.org/wiki/Q114114
26	Bauer	Franz (later F	44414954	Scientific Illustrator	artist.name="Franz Andrea artist.viaf=44414954			4056		https://en.wikipedia.org/wiki/Franz_Andrea_Bauer	https://www.wikidata.org/wiki/Q114114
27	Baynes	C. E.	16749232	Scientific Illustrator	artist.name="C. E. Baynes' artist.viaf=16749232			24758		No	https://www.wikidata.org/wiki/Q114114
28	Beard	James Carter	73709072	Scientific Illustrator	artist.name="James Carter artist.viaf=73709072			41165 & 10530		No	https://www.wikidata.org/wiki/Q114114



Workflow

Tag plates

Research women

Find external identifiers

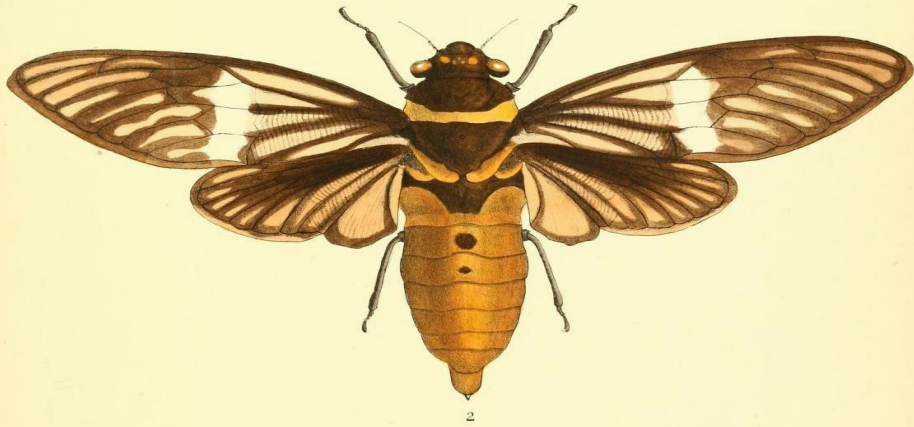
Collate research in ...

spreadsheet

What about Wikidata!



1.



2.

1 *Tosena splendida*,
 2 *Tosena albata*,
 M. Horman-Fisher, del. et lith.

Distant, Ent. Mo. Mag. XV, (1878), p. 76
Distant, Trans. Ent. Soc., (1878), p. 175

Assam.
 N. W. Himalaya.
 Mintern, Bros. imp.

Image by [Maud Horman-Fisher](#) via BHL. Public domain in the US.

Workflow

Wikicommons category page

Wikidata item

Wikicommons creator page



Ruffelia juncea

Wikidata item

Comprehensive as possible

Collate research in references

Add any external identifiers

External identifiers

Dear Professor Dr. Hentschel,

I am currently undertaking research for the Biodiversity Heritage Library in anticipation of a social media campaign for International Womens Day. While undertaking this research I have come across the botanical illustrator May Rivers. She illustrated the book “The Fruit Grower’s Guide” by John Wright see <https://biodiversitylibrary.org/page/18818962>. She is the granddaughter of the notable English horticulturalist Thomas Rivers and daughter of his son Thomas Francis Rivers. I have collated as much information as I can find on her in Wikidata see <https://www.wikidata.org/wiki/Q60483111>. Unfortunately I have been unable to locate her birth and death dates. I am aware that is it possible she is discussed in the book “The Rivers Nursery of Sawbridgeworth” by Elizabeth Waugh but I do not have access to this publication. Images of her work can be found here. https://commons.wikimedia.org/wiki/Category:May_Rivers I hope this is sufficient for her to be added to your database.

Good luck with DSI moving to a new server and I hope that this proceeds smoothly.

Best regards



The screenshot shows the 'Identifiers' section of a Wikidata page. It features a table with one entry: 'Stuttgart Database of Scientific Illustrators ID'. To the right of the entry is a vertical stack of icons (a triangle, a circle, and an inverted triangle) followed by the number '13077'. Below this, there is a link with a right-pointing arrow and the text '1 reference'.

Identifiers	
Stuttgart Database of Scientific Illustrators ID	 13077
	▶ 1 reference



BHL

Change request

Approval for

books/monographs

BHL creator id

Mix'n'match



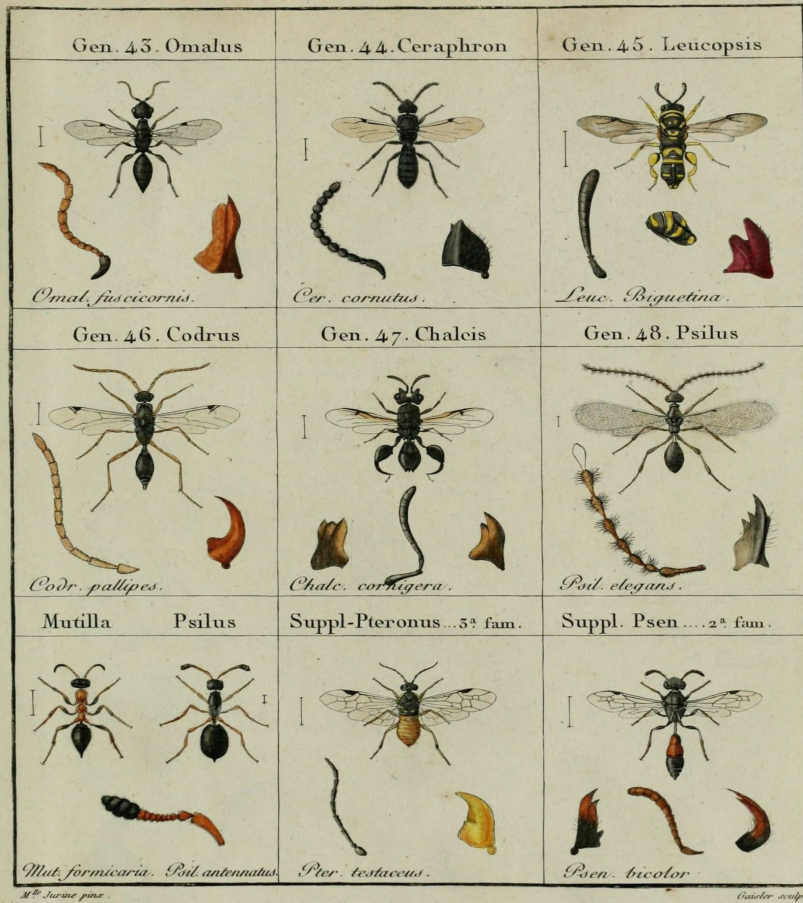
Her Natural History: A Celebration of Women in Natural History

Iridium umbellifera.

Image by [Margaret Roscoe](#) via BHL. Public domain in the US.

Drawing from *Botanic Magazine*, 1825.

Engraved by G. Scriver del. Pinx.

M^o Jurine pinx.

Goulet sculp.

Campaign outcomes

Women added to catalogue

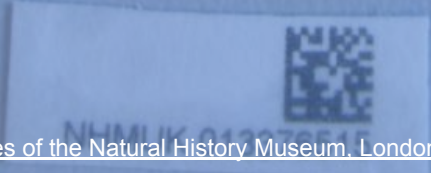
Artworks added to Flickr

Articles published

Three wiki workshops

1938. 3. 30. 1-3.
Linabra cheesmani, Roewer TYPE
Dutch New Guinea. 2♂ ♀.
Byclops Mts., Mt. Lina. 3,500ft.
22. 3. 1936.
L. E. Cheesman.

Linabra cheesmani n.g. n.sp.
2♂ 1♀ - Types
Mt. Lina: N. New-Guinea.
Roewer det. 1937. Nr. 11157.



Wikidata

Linking women to their
collections via
Bloodhound Tracker



FREYCINETIA BANKSII.

London Botanic Garden 220.

PLATE 36.

Image by [Georgina Burne Hetley](#) via BHL. Public domain in the US.

Thanks

Grace Costantino

[Biodiversity Heritage Library](#) costantinog@si.edu

Michelle Marshall

[@HistSciArt](#)

Victoria Leachman

[Museum of New Zealand Papa Tongarewa](#)

victorial@tepapa.govt.nz

Esther Jackson

[LuEsther T. Mertz Library](#) ejackson@nybg.org

BHL cataloging group

Siobhan Leachman

Wikipedia: User:Ambrosia10

Twitter: [@SiobhanLeachman](#)

Telegram: [@siobhanleachman](#)

Slides: <http://bit.ly/HNHWikidataCon>