

SECRET

333

INSPECTIONS AND INVESTIGATIONS

Binder # 2

1 Jun 49thru 31 OCT 49

G-4 Adm File

SECRET



GENERAL HEADQUARTERS, FAR EAST COM AND
ADJUTANT GENERAL'S OFFICE
RADIO AND CABLE CENTER

INCOMING MESSAGE

333

G-4 ROUTING	
A C/S G-4	<input checked="" type="checkbox"/>
B AC/S G-4	<input checked="" type="checkbox"/>
EXECUTIVE	<input checked="" type="checkbox"/>
PLANS & POLICY	<input checked="" type="checkbox"/>
OPERATIONS	<input checked="" type="checkbox"/>
CONST & FAC	<input type="checkbox"/>
TRANSPORTATION	<input type="checkbox"/>
SUPPLY	<input type="checkbox"/>
PETROLEUM	<input type="checkbox"/>
BUDGET	<input type="checkbox"/>
PERSONNEL	<input type="checkbox"/>
ADMINISTRATION	<input checked="" type="checkbox"/>

JA/jjc/BB
31 Oct 49

UNCLASSIFIED
DEFERRED

FROM : CNO WASH DC

TO : CINCPACFLT OAHU TH, COM 13TH SEATTLE WASH, CO
MARIANAS GUAM

INFO : COMNAVFE TOKYO JAPAN, COMWESTSEAFRON SFRAV CALIF,
COMNAVPHIL MANILA PI, COM 12 SFRAV CALIF, COM 14
COM 14 PEARL HARBOR TH, COMALSEAFLRON FT RICHARDSON ALASKA

NR : 281535 Z

Sec Treas John Snyder and RAdm O'Neill USCG will inspect Coast Guard Bases Pacific Area. Itinerary follows.
ETA NAS San Point Seattle 0625 13 Nov. ETD 0725

13 Nov.
ETA Juneau Municipal Airport 1105 13 Nov. ETD 1000 15 Nov.
ETA Adak Air Force Base 1600 15 Nov. ETD 2400 15 Nov.
ETA Haneda Air port Tokyo 0725 17 Nov ETD 0700 20 Nov.
ETA Manila International Air port 1445 20 Nov. ETD

0900 23 Nov.
ETA Agana Guam 1825 23 Nov. ETD 1800 24 Nov.
ETA Wake Island 1555 24 Nov. ETD 1655 24 Nov.
ETA Honolulu Municipal Air Port 0633 24 Nov. ETD 2200

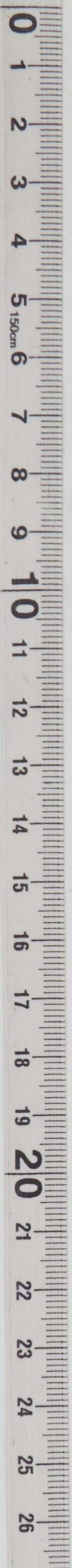
24 Nov.
ETA Mills Field San Francisco 1147 25 Nov.
All times for Sec Treas. RAdm O'Neill. 5 Treasury
Officials. 9 plane crew members including 3 officers.
Coast Guard Plane R 5 D 9147 used throughout.

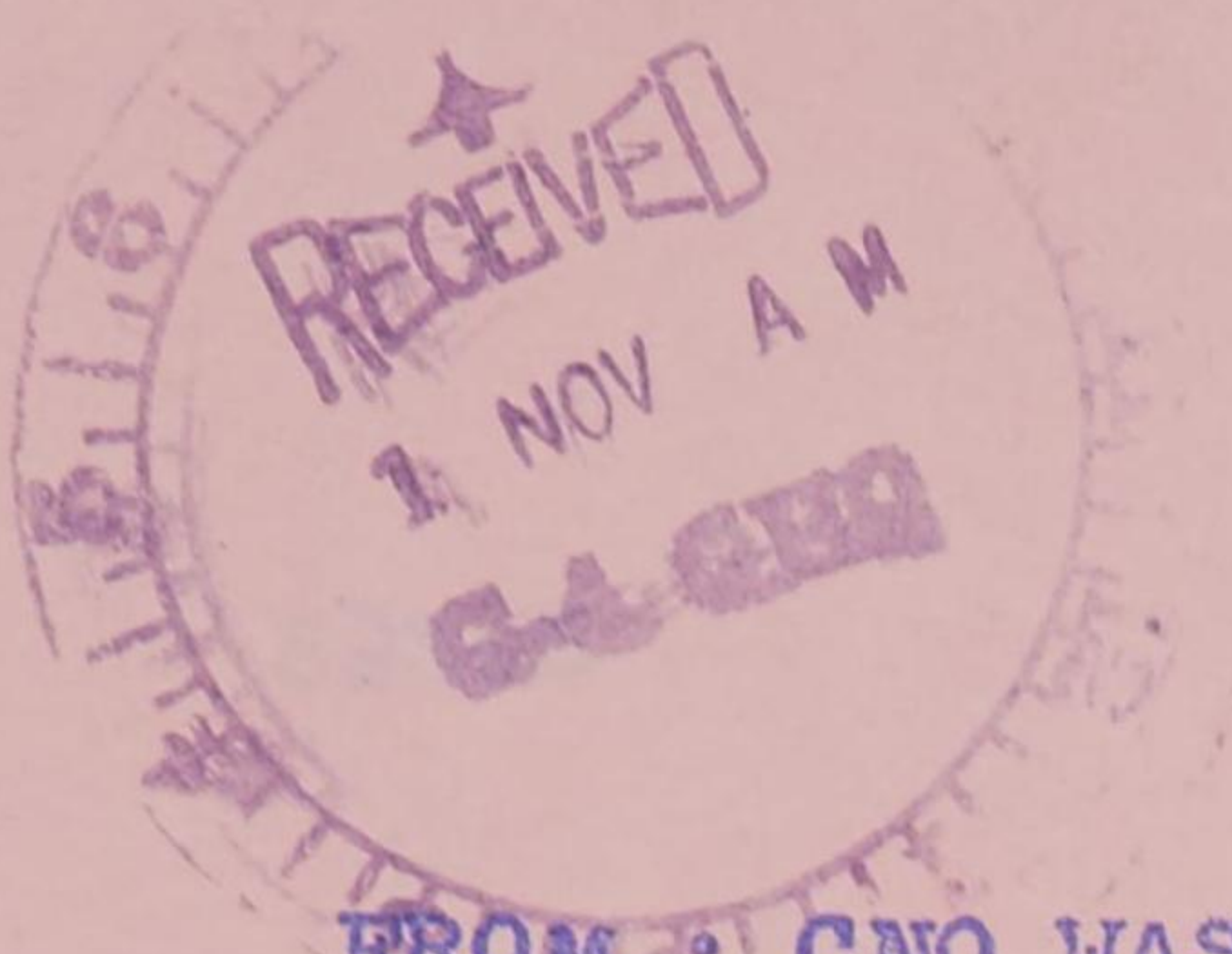
NO SIG

(over)

23252

DEFERRED
UNCLASSIFIED





UNCLASSIFIED
DEFERRED

FROM : CNO WASH DC NR : 281535 Z 31 OCT 49 CONT'D

INFORMATION : COMMANDER IN CHIEF, CHIEF OF STAFF, VISITORS
BUREAU, G-1, G-2, G-3, G-4, AG, SIGNAL,
COMPTROLLER, DIPLOMATIC

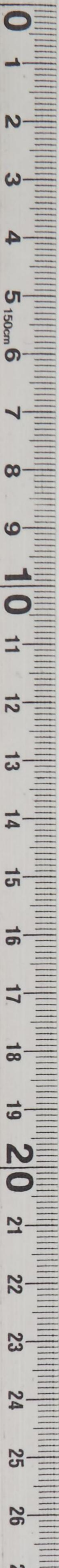
NOTE : This msg readdressed to CINCFE for info by COMNAVFE
under DTG 310057 Z.

NOTE : This msg received AG-OR 311506 I.

23252

DEFERRED
UNCLASSIFIED

TOO : 281535 Z
MCN : AUB 31/31



333
x6

GENERAL HEADQUARTERS
FAR EAST COMMAND
APO 500

AG 333 (28 OCT 49) CB-GD

SUBJECT: Inspection of Repairs and Utilities Activities at IX Corps Area

TO: Commanding General
Eighth Army
APO 343

G-4 ROUTING	
AGD G-4	_____
D AC/S G-4	_____
EXECUTIVE	_____
PLANS & POLICY	_____
OPERATIONS	_____
CONST & FAC	_____
TRANSPORTATION	_____
SUPPLY	_____
PETROLEUM	_____
BUDGET	_____
PERSONNEL	_____
ADMINISTRATION	_____

1. A representative of the Engineer Section, General Headquarters, Far East Command, inspected the repairs and utilities activities at IX Corps during the period 4-12 October 1949.

2. In general, the operations of the Repairs and Utilities Section were very good, and the plans for continued maintenance in the face of your indigenous personnel reductions appeared to be adequate; however, it was noted that the shortage of critical indigenous spare parts is a handicap to the successful performance of the Post Engineers' normal functions.

3. Copies of check lists used during this inspection are inclosed for your information and appropriate action. Duplicate copies were left with the Post Engineers at the time of the inspection.

BY COMMAND OF GENERAL MACARTHUR:

MAILED 1000 OCT 29 '49

H. FRAZIER
Captain, AGD - 4 ROUTING
Asst Adj Gen G-4

4 Incls

1. C/L for Fire Prevention (Camps Schimmelpfennig, Crawford & Sendai)
2. C/L for Utilities (Camps Schimmelpfennig, Crawford & Sendai)
3. C/L for Bldgs & Grounds (Camps Schimmelpfennig, Crawford & Sendai)
4. C/L for Real Estate (Camps Schimmelpfennig, Crawford & Sendai)

G-4 ROUTING	
D AC/S G-4	_____
EXECUTIVE	_____
PLANS & POLICY	_____
OPERATIONS	_____
CONST & FAC	_____
TRANSPORTATION	_____
SUPPLY	_____
PETROLEUM	_____
BUDGET	_____
PERSONNEL	_____
ADMINISTRATION	_____

DISPATCHED
28 OCT 1949
G-4 G-4

C+RE
91696

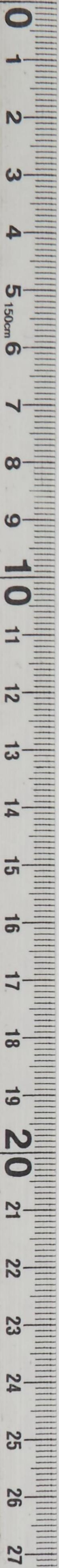
G 4 File

J.N. 91696

G-4

21

21



GD CARE HNL/FVS/fb

MEMORANDUM FOR RECORD:

27 October 1949

SUBJECT: Inspection of Repairs and Utilities Activities at IX Corps Area.

1. By AG Routing Slip, Engr forwards report of inspection of IX Corps R&U activities for G-4 concurrence prior to dispatch to CG, 8th Army. This report requests that GHQ, FEC be advised of the action taken in connection with deficiencies noted in the check lists inclosed with the report. Letter re-typed to state that CINCPAC be advised of action taken.

2. G-4 (CARE) non-concurred in paragraph 3 of proposed letter in that they did not deem a report of action taken essential in view of the minor deficiencies found during the inspection. Lt. Col. Fairbanks, Engr (R&U) concurred in deleting paragraph 3 of proposed letter which requested this report.

3. As this action is in accordance with Engr procedure in making command inspections of Post Engineer activities in the Far East Command, G-4 concurs by AG Routing Slip initial and forwards report to AF for signature and dispatch.

4. Action taken is within established policy.

5. G-4 action is complete on Journal No. 91696.

FVS 26-6028

LFH 26-6030

HNL 26-6028

J.N. 91696

G 4 file

GENERAL HEADQUARTERS
 FAR EAST COMMAND
 Office of the Engineer

Fire Prevention Inspection Check List

1. Command Camp Schimmelpfennig

2. Fire Prevent Engineer None

3. Installation 7th Inf Regt.

4. Fire Marshal Maj. Trindal, PM - Lt Walsh, Asst PM

5. Fire Chief Civilian () Military () Native ()

6. Name S/Sgt Kehoe

	Civilian	Military	Native	Total
7. Officers	-	1 Maj 1 Lt	1	6
8. Fireman		3 Sgts 7	89	96
9. Stations		3		3

10. Write a brief discription of stations:

- (a) 1 sta @ Camp Schimmelpfennig
- (b) 1 sta @ Tagajo (Housing Center)
- (c) 1 sta @ Lanior Field (Air Strip)

11. Pumps	Make	Class	Capacity	Hose	Water	Year	Condition
a(1)	Chrysler	1000	500	—	—	48	Excellent
a(2)	Chev	500	500	Excellent	—	41	Excellent
b(1)	Chev	500	500	Ex	—	41	Excellent
b(2)	GMC	500	500	Ex	—	43	Excellent
c(1)	GMC	500	500	Ex	—	43	Excellent

12. Is fire fighting personnel adequate? Yes

13. Is fire fighting equipment adequate? Yes

14. Is outside aid available? Yes No of Miles? 7

15. Have adapters been provided? Yes

16. Hose: No of sections adequate

- a. Cotton _____ Condition _____ Year _____
- b. Linen _____ Condition _____ Year _____
- c. Suction _____ Condition _____ Year _____

#11

17. Is adequate necessary equipment carried on each pumper? Yes
- a. Ladders. Yes
- b. Extinguishers Yes
- c. Forceable entry tools. Yes
18. Are fire trucks tested according to the provisions of TM 5-600? Yes
19. Is all fire equipment kept clean? Yes Exceptionally Clean.

Fire Department Training Program

1. Are fire equipment drills conducted as prescribed by regulations and records kept? Yes
2. Dates of last 4 drills, (1) 7 Oct (2) 7 Oct (3) 10 Oct (4) 11 Oct.
3. Is water supply adequate? Yes
- a. Hydrant. Yes
- b. Static. Yes
4. Are all pump operators trained to pump from draft? Yes
5. Do all drivers know their districts? Yes
6. Are evacuation drills conducted by fire chief? Yes
7. Is auxiliary brigade trained and efficient? Yes
8. Has all personnel been trained to use fire extinguishers? Yes
9. Has all personnel been instructed in reporting fires? Yes
10. Is the Fire Department Training adequate? Yes

Remarks:

**Very intensive training in progress.
5th Army inspections have awarded Excellent and
Superior ratings.**

FIRE REGULATIONS

1. Fire Marshal.

a. Is either the Fire Marshal or Ass't Fire Marshal always on the Post? _____

Yes

b. Are district Fire Marshals or Fire Wardens appointed? _____

Yes

c. Does FM receive reports of inspections? _____

Yes

d. Does FM spot check inspections? _____

Yes

e. Does FM receive special report of deficiencies? _____

Yes

f. Does FM receive report of corrections? _____

Yes

3. District Fire Marshals or Fire Wardens

a. Is a list of District Fire Marshals or Fire Warden kept in FM office? _____

b. Are DFM or FW especially trained for their duties? Have been schooled

c. Do DFM or FW prepare the building fire plan? _____

Yes

d. Do DFM or FW conduct fire drills? _____

Yes

e. Is a written report of drills submitted to FM? _____

Yes weekly

f. Is the Fire Plan posted? _____

Each Unit - Yes

g. Are DFM or FW familiar with their duties? _____

Yes

h. Do DFM or FW instruct fire guards? _____

Yes

4. Fire Plan.

a. Are fire plans coordinated? _____

Yes

b. Is the alarm system adequate? _____

Yes

Manual _____

Electrical? _____

both? _____

c. Is the fire phone number prominently posted? _____

Yes

#13

4
3
4
5
6
7
8
9
10
11
12
13
14
15
16
17
18
19
20
21
22
23
24
25
26
27

d. Evacuation

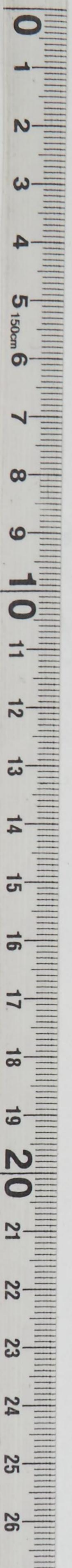
- (1) Are personnel specifically instructed as to what escape channel to use? Yes
- (2) Is an alternate escape channel indicated? Yes
- (3) Are personnel instructed to close windows and doors and why? Yes
Part of training program
- (4) Are personnel designated to evacuate records? Yes
- (5) Are night time evacuation drills conducted in the dark? Yes
- (6) Are alternate routes of escape used? No

e. Fire Drills

- (1) How often held? Weekly
- (2) Is report submitted to FM? Yes
- (3) Are personnel specifically designated to man first aid fire equipment? Designated on platoon basis
- (4) Is all personnel instructed in use of first aid fire equipment? Yes
- (5) Is electricity turned off? Yes

5. Fire Prevention Inspection:

- a. Are fire prevention inspections conducted and coordinated with an aim toward determining the effectiveness and adequacy of local fire prevention regulations and orders. Yes - monthly
- b. Are fire prevention inspections used as:
- (1) A continuing survey to determine the adequacy and proper placement, distribution, type and condition of first aid fire fighting equipment? Yes
- (2) A guide for training personnel and for fire prevention education? Yes



(3) A check of conditions, clearance, adequacy, and marking of fire doors, fire escapes, fire exits and all escape channels. _____

Yes

(4) A check against over-population, misuse or unauthorized use of space of facilities. _____

Yes

(5) A written record for the fire marshal to preplan a fire prevention program. _____

Yes

6. Do fire regulations reflect tailor made protection for the post, in particular or a stereotyped group of fire regulations? _____

Yes

7. Are fire regulations adequate? _____

Yes, but subject to constant review and additions.

8. Do fire regulations need revising? _____

are being revised constantly.

9. Remarks:

#15

Fire Prevention Inspections

1. Who conducts inspections? Unit Fire Prevention Officers - Weekly and PM - Monthly

2. State frequency of:

a. Theaters and places of public assembly. Weekly

b. Occupancies where rubbish accumulates. None

c. Target hazards. Monthly - Spot check weekly, (PM)

d. Dwellings Monthly

3. Are seasonal hazards emphasized? Yes Recorded? Yes

4. Are inspection records tabulated by hazard, occupancy and building? Yes - No, kept by location

5. Electrical.

a. Is the wiring standard? _____ substandard? Japanese

b. Is there unauthorized wiring? Kept to minimum by weekly inspection.

c. Overloading? No Where? _____

d. Are proper fuses used Yes sizes of wire Fuses boxes are locked Fuse (Amps) _____

e. List unauthorized equipment. Kept to a minimum by weekly inspection and excellent record keeping.

6. Flammable Liquids

a. Are flammable liquids segregated? Yes

b. Are storage limitations observed? Yes

c. Is acetylene gas properly stored? Yes

7. Heating Equipment

a. Are heating units installed in an approved manner? Yes

b. Are chimneys, stacks and roofjacks properly installed? Yes

Bring replaced as fast as shops
can make.

- c. Are hoods and vents void of grease and dust? _____
- d. Are fuel tanks located outside building? Yes
- e. Are fuel lines provided with shut offs outside buildings? Yes
- f. Are adequate clearances maintained between combustibles and heating equipment? Yes
- g. Are ashes and fuels safely handled? Yes

8. Storage

- a. Are hazardous materials segregated from other storage? Yes
- b. Are proper aisles and clearances maintained? Yes
- c. Are exits ample Yes
- d. Are extinguishers of proper type and size? Yes
- e. Are extinguishers properly tagged and dated? Yes
- f. Are extinguishers adequate? Yes
- g. Are extinguishers properly marked? Yes
- h. Is no smoking enforced? Yes
- i. Is a controlled space provided for smoking? Yes
- j. Are NO SMOKING signs conspicuously posted? Yes
- k. Are all exits, fire equipment and clearances unobstructed by temporary or permanent storage? Yes
- l. If a fire should occur now would any thing interfere with the notification of the fire department or hamper its operation? No
What _____

9. Occupancies

- a. Barracks
 - (1) Do barracks constitute a hazard to life? Japanese construction burns exceedingly fast. Fire escapes provided.
 - (2) Do exists open in the line of egress? Yes
 - (3) Are stairways inclosed? No
 - (4) Are fire escapes adequate? Yes

#17

4 gal water
2 1/2 gal foam
15 # CO2

X 18

- (5) Is the alarm system adequate? Yes
- (6) Are extinguishers adequate? Yes Size 4 gal Type water
- (7) Are cleaning materials safely stored? Yes
- (8) Are clubs, day rooms, supply rooms a part of the barracks? Yes
- (9) Are evacuation drills conducted and records kept? Yes
- (10) Is a fire plan posted? Yes

b. Motor Pools, Garage, Repair Shops.

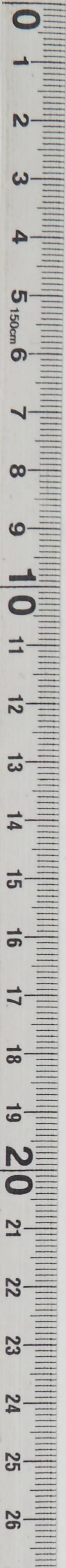
- (1) Is fuel properly stored and dispensed? Yes
- (2) Are crank case drainings safely handled? Yes
- (3) Is the area properly policed? Yes
- (4) Are fire extinguishers right size and type? Yes
- (5) Are no smoking signs posted and rule enforced? Yes
- (6) Are vehicles stored indoors with adequate clearance? none stored indoors
- (7) Do any of the shops or buildings constitute an exposure hazard?
how? no
- (8) Is ample water available for fire fighting? Yes
- (9) Are motor pools and garages inspected weekly? Yes

c. Public Assembly

- (1) Are places of public assembly inspected daily? Yes
- (2) Are projection booths checked for safe film handling? Yes
- (3) Are the provisions of TM 5-600 at closing time at all clubs with recreational facilities, a guard posted for at least two hours and are records kept? Yes

11. Administration and Educations.

- a. Are required records kept? Yes
- b. Are fires thoroughly investigated? Yes
- c. Are inspections arranged to cover all hazards? Yes
- d. Are hydrants tested? Yes



- e. Do record include estimated fire losses? Yes
- f. Are corrective actions recommended? Yes
- g. Is the most being accomplished with available equipment Yes
- h. Do Military, Civilian and Native personnel know the Fire Department phone No. ? Yes
- i. Does a general fire prevention consciousness prevail? Yes

12. Major Disaster.

- a. Has any preplanning been done to forestall the results of earthquake, conflagration, flood, internal or external disorder? Yes

What?

- (1) Disaster plan
- (2) Disaster equipment earmarked for disaster use only.

Remarks:

Check List received:

Date 11 Oct 49 Co _____ Post Engineer Glin W. Trindel
 Fire Chief J. D. Welch 1st Lt. C.E.
 Signed W. J. Pritchard, Maj. CE GHQ

#19

GENERAL HEADQUARTERS
 FAR EAST COMMAND
 Office of the Engineer

Fire Prevention Inspection Check List

1. Command Camp Crawford, 7th Division.

2. Fire Prevent Engineer
None

3. Installation _____

4. Fire Marshal Major Willis Asst. Fire Marshall.

5. Fire Chief Civilian () Military (2-PFC) Native ()

6. Name P.F.O. Revl M Barnes.

7. <u>Asst. Chief</u>	Civilian	Military	<u>Japanese</u>	Total
<u>Officers</u>		<u>2</u>	Native	

8. Fireman 101

9. Stations 3 Stations

10. Write a brief discription of stations:

2 Camp Crawford
1 Atsuhetsu Ammo Dump

11. Pumpers	Make	Class	Capacity	Hose	Water	Year	Condition
<u>2</u>	<u>Jap.</u>	<u>325</u>	<u>325</u>				
<u>1</u>	<u>Chev.</u>	<u>500</u>	<u>500</u>				
<u>1</u>	<u>Internat.</u>	<u>500</u>	<u>500</u>				
<u>1</u>	<u>GMC.</u>	<u>500</u>	<u>500</u>				

12. Is fire fighting personnel adequate? Yes

13. Is fire fighting equipment adequate? Yes

14. Is outside aid available? Yes No of Miles? 315

15. Have adapters been provided? Yes

16. Hose: No of sections Adequate

a. Cotton _____ Condition _____ Year _____

b. Linon _____ Condition _____ Year _____

c. Suction _____ Condition _____ Year _____

Incl 1'

bell

17. Is adequate necessary equipment carried on each pumper? Yes

a. Ladders. Yes

b. Extinguishers Yes

c. Forceable entry tools. Yes

18. Are fire trucks tested according to the provisions of TM 5-600? Yes

19. Is all fire equipment kept clean? Yes

Fire Department Training Program

1. Are fire equipment drills conducted as prescribed by regulations and records kept? daily, weekly, monthly.

2. Dates of last 4 drills. Last 4 days

3. Is water supply adequate? Yes

a. Hydrant. Yes

b. Static. Yes

4. Are all pump operators trained to pump from draft? Yes

5. Do all drivers know their districts? Yes

6. Are evacuation drills conducted by unit fire wardens? Yes

7. Is auxiliary brigade trained and efficient? No

8. Has all personnel been trained to use fire extinguishers? Yes

9. Has all personnel been instructed in reporting fires? Yes

10. Is the Fire Department Training adequate? Yes, according to T. M's.

Remarks:



FIRE REGULATIONS

1. Fire Marshal.

- a. Is either the Fire Marshal or Ass't Fire Marshal always on the Post? Yes
- b. Are ~~district~~ Fire Marshals or Fire Wardens appointed? Yes
- c. Does FM receive reports of inspections? Yes
- d. Does FM spot check inspections? Yes
- e. Does FM receive special report of deficiencies? Yes
- f. Does FM receive report of corrections? Yes

3. District Fire Marshals or Fire Wardens

- a. Is a list of District Fire Marshals or Fire Warden kept in FM office? No-change in personnel (army) impossible to keep current
- b. Are DFM or FW especially trained for their duties? Yes
- c. Do DFM or FW prepare the building fire plan? Yes
- d. Do DFM or FW conduct fire drills? Yes
- e. Is a written report of drills submitted to FM? Yes
- f. Is the Fire Plan posted? Yes
- g. Are DFM or FW familiar with their duties? Yes
- h. Do DFM or FW instruct fire guards? Yes

4. Fire Plan.

- a. Are fire plans coordinated? Yes
- b. Is the alarm system adequate?
Manual Yes Electrical? Yes both? _____
- c. Is the fire phone number prominently posted? 117

Incl 13

Incl 17

d. Evacuation

- (1) Are personnel specifically instructed as to what escape channel to use? Yes
- (2) Is an alternate escape channel indicated? Yes
- (3) Are personnel instructed to close windows and doors and why? Yes
- (4) Are personnel designated to evacuate records? Yes
- (5) Are night time evacuation drills conducted in the dark? once monthly.
- (6) Are alternate routes of escape used? Yes

e. Fire Drills

- (1) How often held? Twice weekly one day one night
- (2) Is report submitted to FM? Yes
- (3) Are personnel specifically designated to man first aid fire equipment? Yes
- (4) Is all personnel instructed in use of first aid fire equipment? Yes
- (5) Is electricity turned off? Yes in event of fire.

5. Fire Prevention Inspection:

- a. Are fire prevention inspections conducted and coordinated with an aim toward determining the effectiveness and adequacy of local fire prevention regulations and orders. Yes
- b. Are fire prevention inspections used as:
 - (1) A continuing survey to determine the adequacy and proper placement, distribution, type and condition of first aid fire fighting equipment? Yes
 - (2) A guide for training personnel and for fire prevention education? Yes

Vance:- require about 400 water type ext. for Island Hokkaido.

(3) A check of conditions, clearance, adequacy, and marking of fire doors, fire escapes, fire exits and all escape channels. Yes

(4) A check against over-population, misuse or unauthorized use of space of facilities. Yes

(5) A written record for the fire marshal to preplan a fire prevention program. Yes

6. Do fire regulations reflect tailor made protection for the post, in particular or a stereotyped group of fire regulations? Yes

7. Are fire regulations adequate? Yes

8. Do fire regulations need revising? No

9. Remarks:

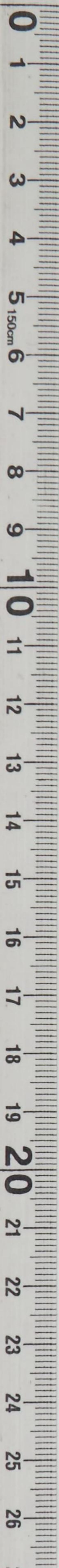
Fire Department in good condition.

Incl 15

Ind 1/6

Fire Prevention Inspections

1. Who conducts inspections? Japanese and enlisted men
2. State frequency of:
 - a. Theaters and places of public assembly. weekly
 - b. Occupancies where rubbish accumulates. not applicable
 - c. Target hazards. Armo dump daily. Pol farm. by Japs.
 - d. Dwellings Monthly
3. Are seasonal hazards emphasized? Yes Recorded? Yes
4. Are inspection records tabulated by hazard, occupancy and building? Yes
5. Electrical.
 - a. Is the wiring standard? Jap Standard. substandard? _____
 - b. Is there unauthorized wiring? Yes - some
 - c. Overloading? Yes Where? BOQ
 - d. Are proper fuses used with exceptions sizes of wire 12-14 Fuse(Amps) 15-30
 - e. List unauthorized equipment. Appliances.
6. Flammable Liquids
 - a. Are flammable liquids segregated? Yes
 - b. Are storage limitations observed? Yes
 - c. Is acetylene gas properly stored? Open Storage
7. Heating Equipment
 - a. Are heating units installed in an approved manner? Yes
 - b. Are chimneys, stacks and roofjacks properly installed? Yes



- c. Are hoods and vents void of grease and dust? Yes
- d. Are fuel tanks located outside building? Yes
- e. Are fuel lines provided with shut offs outside buildings? Yes
- f. Are adequate clearances maintained between combustibles and heating equipment? Yes
- g. Are ashes and fuels safely handled? Yes

8. Storage

- a. Are hazardous materials segregated from other storage? Yes
- b. Are proper aisles and clearances maintained? Yes
- c. Are exits ample Yes
- d. Are extinguishers of proper type and size? where possible
- e. Are extinguishers properly tagged and dated? Yes
- f. Are extinguishers adequate? Shorton water type - 4 gal.
- g. Are extinguishers properly marked? Yes
- h. Is no smoking enforced? Yes
- i. Is a controlled space provided for smoking? Yes
- j. Are NO SMOKING signs conspicuously posted? Yes
- k. Are all exists, fire equipment and clearances unobstructed by temporary or permanent storage? Yes
- l. If a fire should occur now would any thing interfere with the notification of the fire department or hamper its operation? No
What _____

9. Occupancies

- a. Barracks
 - (1) Do barracks constitute a hazard to life? No
 - (2) Do exists open in the line of egress? None No-windows available
 - (3) Are stairways inclosed? in theater no open balcony
 - (4) Are fire escapes adequate? Yes

Incl 13

Incl 18

- (5) Is the alarm system adequate? Yes
- (6) Are extinguishers adequate? Yes Size 4 gal water type _____
- (7) Are cleaning materials safely stored? Yes
- (8) Are clubs, day rooms, supply rooms a part of the barracks? No
- (9) Are evacuation drills conducted and records kept? Yes
- (10) Is a fire plan posted? Yes

b. Motor Pools, Garage, Repair Shops.

- (1) Is fuel properly stored and dispensed? Yes
- (2) Are crank case drainings safely handled? Yes
- (3) Is the area properly policed? Yes
- (4) Are fire extinguishers right size and type? Yes
- (5) Are no smoking signs posted and rule enforced? Yes
- (6) Are vehicles stored indoors with adequate clearance? Yes
- (7) Do any of the shops or buildings constitute an exposure hazard?
how? No
- (8) Is ample water available for fire fighting? Yes
- (9) Are motor pools and garages inspected weekly? Yes

c. Public Assembly

- (1) Are places of public assembly inspected daily? Yes
- (2) Are projection booths checked for safe film handling? Yes
- (3) Are the provisions of TM 5-600 at closing time at all clubs with recreational facilities, a guard posted for at least two hours and are records kept? Yes, after closing inspection

11. Administration and Educations.

- a. Are required records kept? Yes
- b. Are fires thoroughly investigated? Yes
- c. Are inspections arranged to cover all hazards? Yes
- d. Are hydrants tested? Yes

- e. Do record include estimated fire losses? Yes
- f. Are corrective actions recommended? Yes
- g. Is the most being accomplished with available equipment Yes
- h. Do Military, Civilian and Native personnel know the Fire Department phone No. ? Yes
- i. Does a general fire prevention consciousness prevail? Yes

12. Major Disaster.

- a. Has any preplanning been done to forestall the results of earthquake, conflagration, flood, internal or external disorder? Yes

What?

Disaster plan in effect.

Remarks:

Check List received:

Date 5 Oct. 49 Co _____

Post Engineer W.R. Willis, Maj. CB
Marshal.

Asst. Fire Chief L.L. Stoner, 1st Lt. Inf.

Signed D. W. BELL

2nd/19

GENERAL HEADQUARTERS
 FAR EAST COMMAND
 Office of the Engineer

Fire Prevention Inspection Check List

1. Command IX Corps
2. Fire Prevent Engineer None
3. Installation Camp Sendai
4. Fire Marshal Capt. Carpenter
5. Fire Chief Civilian (1) Military (1) Native (1)

6. Name Lt. Curtin Stat. 2 Japanese Chief. Sta. #1

	Civilian	Military	Native	Total
7. Officers		<u>1</u>	<u>1</u>	<u>1</u>
8. Fireman		<u>64</u>	<u>100</u>	<u>100</u>

9. Stations

10. Write a brief discription of stations: #1 Station at Camp.
#2 Station, cite of Sendai

11. Pumps	Make	Class	Capacity	Hose	Water	Year	Condition
<u>3</u>	<u>GAC</u>	<u>500</u>	<u>500</u>				<u>Good</u>
<u>2</u>	<u>Fords</u>	<u>500</u>	<u>500</u>				<u>Good</u>
<u>1</u>	<u>International</u>	<u>500</u>	<u>500</u>				<u>Good</u>
<u>1</u>	<u>Diamond T.</u>		<u>750</u>				<u>Good</u>
<u>2</u>	<u>GAC</u>	<u>500</u>	<u>500</u>				<u>Good</u>
<u>2</u>	<u>Jap</u>	<u>325</u>	<u>325</u>		<u>loaned to Japanese</u>		<u>Fair</u>

12. Is fire fighting personnel adequate? Yes

13. Is fire fighting equipment adequate? Yes

14. Is outside aid available? Yes No of Miles? 2 miles

15. Have adapters been provided? Yes

16. Hose: No of sections sufficient for operation but no reserve

a. Cotton _____ Condition _____ Year _____

b. Linen _____ Condition _____ Year _____

c. Suction _____ Condition _____ Year _____

#1

- #12
17. Is adequate necessary equipment carried on each pumper? Yes
- a. Ladders. Yes
- b. Extinguishers Yes
- c. Forceable entry tools. Yes
18. Are fire trucks tested according to the provisions of TM 5-600? Yes
19. Is all fire equipment kept clean? Yes

Fire Department Training Program

1. Are fire equipment drills conducted as prescribed by regulations and records kept? Yes
2. Dates of last 4 drills, daily.
3. Is water supply adequate? Camp - Yes. City - low pressure.
- a. Hydrant. See above
- b. Static. See above
4. Are all pump operators trained to pump from draft? Yes
5. Do all drivers know their districts? Yes
6. Are evacuation drills conducted by fire wardens? Yes
7. Is auxiliary brigade trained and efficient? No
8. Has all personnel been trained to use fire extinguishers? Yes
9. Has all personnel been instructed in reporting fires? Yes. # 117.
10. Is the Fire Department Training adequate? Yes.

Remarks:

FIRE REGULATIONS

1. Fire Marshal.

a. Is either the Fire Marshal or Ass't Fire Marshal always on the Post? _____

Yes

b. Are ~~district~~ ^{Unit} Fire Marshals or Fire Wardens appointed? _____

Yes

c. Does FM receive reports of inspections? _____

Yes

d. Does FM spot check inspections? _____

Yes

e. Does FM receive special report of deficiencies? _____

Yes

f. Does FM receive report of corrections? _____

Yes

3. ~~District~~ ^{Unit} Fire Marshals or Fire Wardens

a. Is a list of ~~District~~ ^{Unit} Fire Marshals or Fire Warden kept in FM office? _____

Yes

b. Are DFM or FW especially trained for their duties? _____

Yes

c. Do DFM or FW prepare the building fire plan? _____

Unit Commanders.

d. Do DFM or FW conduct fire drills? _____

Yes

e. Is a written report of drills submitted to FM? _____

Yes

f. Is the Fire Plan posted? _____

Yes

g. Are DFM or FW familiar with their duties? _____

Yes

h. Do DFM or FW instruct fire guards? _____

Yes

4. Fire Plan.

a. Are fire plans coordinated? _____

Yes

b. Is the alarm system adequate? _____

box and telephone

Manual

Electrical?

both?

c. Is the fire phone number prominently posted? _____

Yes

/ 3

#14

d. Evacuation

- (1) Are personnel specifically instructed as to what escape channel to use? Yes
- (2) Is an alternate escape channel indicated? all escapes marked
- (3) Are personnel instructed to close windows and doors and why? Yes
- (4) Are personnel designated to evacuate records? Yes
- (5) Are night time evacuation drills conducted in the dark? Yes
Occasionally
- (6) Are alternate routes of escape used? Yes

e. Fire Drills

- (1) How often held? Monthly
- (2) Is report submitted to FM? Yes
- (3) Are personnel specifically designated to man first aid fire equipment? Yes
- (4) Is all personnel instructed in use of first aid fire equipment? Yes
- (5) Is electricity turned off? Yes

5. Fire Prevention Inspection:

- a. Are fire prevention inspections conducted and coordinated with an aim toward determining the effectiveness and adequacy of local fire prevention regulations and orders. Yes
- b. Are fire prevention inspections used as:
 - (1) A continuing survey to determine the adequacy and proper placement, distribution, type and condition of first aid fire fighting equipment? Yes
 - (2) A guide for training personnel and for fire prevention education? Yes

(3) A check of conditions, clearance, adequacy, and marking of fire doors, fire escapes, fire exits and all escape channels. Yes

(4) A check against over-population, misuse or unauthorized use of space of facilities. Yes

(5) A written record for the fire marshal to preplan a fire prevention program. Yes

6. Do fire regulations reflect tailor made protection for the post, in particular or a ster etyped group of fire regulations? Yes

7. Are fire regulations adequate? Yes

8. Do fire regulations need revising? New Camp SGP being prepared

9. Remarks:

Troop housing over populated at present will be corrected when barracks under construction are completed.

#15

#16

Fire Prevention Inspections

1. Who conducts inspections? Troop Housing Dependent housing
Unit Fire Warden, Fire Marshal or representative

2. State frequency of:

a. Theaters and places of public assembly. twice monthly F.M.

b. Occupancies where rubbish accumulates. F.M.

c. Target hazards. Motor Pool, F.M. Weekly

d. Dwellings F.M. Monthly

3. Are seasonal hazards emphasized? Yes Recorded? Yes

4. Are inspection records tabulated by hazard, occupancy and building? Yes

5. Electrical.

a. Is the wiring standard? _____ substandard? Japanese

b. Is there unauthorized wiring? Yes

c. Overloading? Yes Where? Troop Housing

d. Are proper fuses used Yes sizes of wire OK Fuse (Amps) OK

e. List unauthorized equipment. Appliances

6. Flammable Liquids

a. Are flammable liquids segregated? Yes

b. Are storage limitations observed? Yes

c. Is acetylene gas properly stored? Open Storage

7. Heating Equipment

a. Are heating units installed in an approved manner? Yes

b. Are chimneys, stacks and roofjacks properly installed? Yes

- c. Are hoods and vents void of grease and dust? Yes
- d. Are fuel tanks located outside building? Yes
- e. Are fuel lines provided with shut offs outside buildings? Yes
- f. Are adequate clearances maintained between combustibles and heating equipment? Yes
- g. Are ashes and fuels safely handled? Yes

8. Storage

- a. Are hazardous materials segregated from other storage? Yes
- b. Are proper aisles and clearances maintained? Yes
- c. Are exits ample Yes
- d. Are extinguishers of proper type and size? Yes
- e. Are extinguishers properly tagged and dated? Yes
- f. Are extinguishers adequate? Yes
- g. Are extinguishers properly marked? Yes
- h. Is no smoking enforced? Yes
- i. Is a controlled space provided for smoking? Yes
- j. Are NO SMOKING signs conspicuously posted? Yes
- k. Are all exits, fire equipment and clearances unobstructed by temporary or permanent storage? Yes
- l. If a fire should occur now would any thing interfere with the notification of the fire department or hamper its operation? No.
What _____

9. Occupancies

a. Barracks

- (1) Do barracks constitute a hazard to life? Not serious
- (2) Do exists open in the line of egress? Yes
- (3) Are stairways inclosed? No
- (4) Are fire escapes adequate? Yes

#17

#18

- (5) Is the alarm system adequate? Yes
- (6) Are extinguishers adequate? Yes Size 4 gal Type Pump (water)
- (7) Are cleaning materials safely stored? Yes
- (8) Are clubs, day rooms, supply rooms a part of the barracks? None
- (9) Are evacuation drills conducted and records kept? Yes
- (10) Is a fire plan posted? Yes

b. Motor Pools, Garage, Repair Shops.

- (1) Is fuel properly stored and dispensed? Yes
- (2) Are crank case drainings safely handled? Yes
- (3) Is the area properly policed? Yes
- (4) Are fire extinguishers right size and type? Yes
- (5) Are no smoking signs posted and rule enforced? Yes
- (6) Are vehicles stored indoors with adequate clearance? open storage
- (7) Do any of the shops or buildings constitute an exposure hazard?
how? No
- (8) Is ample water available for fire fighting? Camp - Yes City - No.
- (9) Are motor pools and garages inspected weekly? by Unit Commander

c. Public Assembly

- (1) Are places of public assembly inspected daily? No.
- (2) Are projection booths checked for safe film handling? Yes
- (3) Are the provisions of TM 5-600 at closing time at all clubs with recreational facilities, a guard posted for at least two hours and are records kept? Yes

11. Administration and Educations.

- a. Are required records kept? Yes
- b. Are fires thoroughly investigated? Yes
- c. Are inspections arranged to cover all hazards? Yes
- d. Are hydrants tested? Yes

- e. Do record include estimated fire losses? Yes
- f. Are corrective actions recommended? Yes
- g. Is the most being accomplished with available equipment Yes
- h. Do Military, Civilian and Native personnel know the Fire Department phone No. ? Yes
- i. Does a general fire prevention consciousness prevail? Yes

12. Major Disaster.

- a. Has any preplanning been done to forestall the results of earthquake, conflagration, flood, internal or external disorder? _____

What?

Disaster plan is effect.

Remarks:

Check List received:

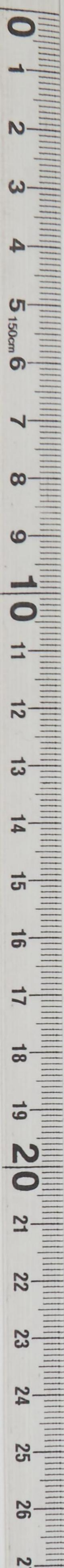
Date 10 Oct 49 Co _____ Post Engineer Lt. Col. Frimann

Fire Chief ~~XXXXX~~ James J. Carpenter Capt. C.E.

Signed Dean C. Bell

#19

9



CHECK LIST FOR UTILITIES
 OPERATION AND MAINTENANCE

Camp Schimmelpennig

1. CONSERVATION

	Good	Fair	Poor
a. Command Support	<input checked="" type="checkbox"/>	<input type="checkbox"/>	<input type="checkbox"/>
b. Organization	<input checked="" type="checkbox"/>	<input type="checkbox"/>	<input type="checkbox"/>
c. Leadership	<input checked="" type="checkbox"/>	<input type="checkbox"/>	<input type="checkbox"/>
d. Water per Captia	Is Met	Is Not Met	180 gpd
* e. Electric Energy KWH/man		<input checked="" type="checkbox"/>	198 KWH Aug.
<u>MONTHLY TARGET</u>			
	Less	Greater	
f. Freon Replacement Target	<input checked="" type="checkbox"/>	<input type="checkbox"/>	
g. Freon Consumption Target	<input checked="" type="checkbox"/>	<input type="checkbox"/>	

2. OPERATIONAL COST

	Correct	Incorrect	
a. Procedure for Handling Population Reports	<input checked="" type="checkbox"/>	<input type="checkbox"/>	
b. Reporting of Consumption of Utility Service based on Estimates (Metering) appears	<input checked="" type="checkbox"/>	<input type="checkbox"/>	
c. Unit Operating and Maintenance Cost for:	High	Normal	Low
(1) Water Plants & System	<input type="checkbox"/>	<input checked="" type="checkbox"/>	<input type="checkbox"/>
7 Water points (2) Electric Plants & System	<input type="checkbox"/>	<input checked="" type="checkbox"/>	<input type="checkbox"/>
(3) Refrigeration	<input type="checkbox"/>	<input checked="" type="checkbox"/>	<input type="checkbox"/>
(4) Sewage Plant & System	<input type="checkbox"/>	<input type="checkbox"/>	<input checked="" type="checkbox"/>
(5) Heating Plants & System	<input type="checkbox"/>	<input checked="" type="checkbox"/>	<input type="checkbox"/>
(6) Shop Operating Cost	<input type="checkbox"/>	<input checked="" type="checkbox"/>	<input checked="" type="checkbox"/>

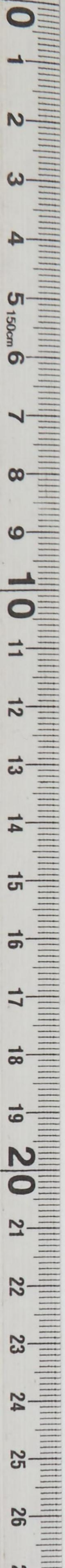
3. OPERATIONS AND MAINTENANCE

	Yes	No
a. Water plant and distribution system:		
(1) General physical condition is satisfactory	<input checked="" type="checkbox"/>	<input type="checkbox"/>
(2) Preventive maintenance record is complete	<input checked="" type="checkbox"/>	<input type="checkbox"/>
(3) Preventive maintenance procedure is used	<input checked="" type="checkbox"/>	<input type="checkbox"/>
(4) Supply at tap is adequate	<input checked="" type="checkbox"/>	<input type="checkbox"/>
(5) Bacteriological history is satisfactory	<input checked="" type="checkbox"/>	<input type="checkbox"/>
(6) System residual chorine is maintained up to F&C Standard	<input checked="" type="checkbox"/>	<input type="checkbox"/>

* Supplying water for ice plant which furnishes ice for other units, laundry working for IX Corps Area. Coca Cola and milk plant for N. Honshu.

In 2/2'

Incl 2



- | | Yes | No |
|--|-------------------------------------|--------------------------|
| (7) From Consumers' view point the water supply is good | <input checked="" type="checkbox"/> | <input type="checkbox"/> |
| (8) Maps and records of the distribution system are available | <input checked="" type="checkbox"/> | <input type="checkbox"/> |
| (9) Maps and records of the distribution system are complete | <input checked="" type="checkbox"/> | <input type="checkbox"/> |
| (10) Emergency procedures to meet major breakdown in the system have been prepared | <input checked="" type="checkbox"/> | <input type="checkbox"/> |

b. Sewage plants and collection system:

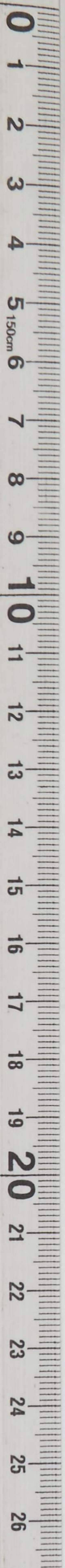
- | | | |
|---|---------------------------------------|-------------------------------------|
| (1) The operation of disposal plant is satisfactory | NA | <input type="checkbox"/> |
| (2) The plant is considered unsanitary | NA | <input type="checkbox"/> |
| (3) Discharge to streams or Ocean is considered unsanitary or health hazard | NA
sludge plants | <input type="checkbox"/> |
| (4) The system covers the entire post | <input checked="" type="checkbox"/> | <input type="checkbox"/> |
| (5) Additional sewerage disposal measures are required | <input checked="" type="checkbox"/> | <input type="checkbox"/> |
| (6) Pit latrines are in use | <input type="checkbox"/> | <input checked="" type="checkbox"/> |
| (7) Pit latrines are unsanitary and a health hazard | <input type="checkbox"/> | <input checked="" type="checkbox"/> |
| (8) Maps and records of the sewerage system are available | <input checked="" type="checkbox"/> | <input type="checkbox"/> |
| (9) Maps and records of the sewerage system are complete | <input checked="" type="checkbox"/> | <input type="checkbox"/> |

c. Electric power plants (Portable and fixed):

- | | | |
|--|-------------------------------------|--------------------------|
| (1) General physical condition is satisfactory | <input checked="" type="checkbox"/> | <input type="checkbox"/> |
| (2) Operations appear good | <input checked="" type="checkbox"/> | <input type="checkbox"/> |
| (3) Preventive maintenance records are complete | <input checked="" type="checkbox"/> | <input type="checkbox"/> |
| (4) Preventive Maintenance Procedures are used | <input checked="" type="checkbox"/> | <input type="checkbox"/> |
| (5) Lubrication charts & maintenance instruction are posted in plants | <input checked="" type="checkbox"/> | <input type="checkbox"/> |
| (6) Supply of fuel oil is conveniently arranged | <input checked="" type="checkbox"/> | <input type="checkbox"/> |
| (7) Supply of fuel oil is adequate | <input checked="" type="checkbox"/> | <input type="checkbox"/> |
| (8) Operating logs are maintained | <input checked="" type="checkbox"/> | <input type="checkbox"/> |
| (9) Detail plans of the plant are available to assist during emergency repairs | <input checked="" type="checkbox"/> | <input type="checkbox"/> |

d. Electric distribution system, exterior:

- | | | |
|---|-------------------------------------|--------------------------|
| (1) General physical condition is satisfactory | <input checked="" type="checkbox"/> | <input type="checkbox"/> |
| (2) Preventive maintenance records are complete | <input checked="" type="checkbox"/> | <input type="checkbox"/> |



- | | Yes | No |
|--|-----------|-------------------------------------|
| (3) Preventive maintenance procedures are used | <u> </u> | <u> </u> |
| (4) The system is seriously overloaded | <u> </u> | <input checked="" type="checkbox"/> |
| (5) Maps and records of the system are available | <u> </u> | <u> </u> |
| (6) Maps and records of the systems are complete | <u> </u> | <u> </u> |
| (7) Emergency procedure to meet major breakdowns
in the system have been prepared | <u> </u> | <u> </u> |

e. Electric distribution systems, interior:

- | | | |
|---|-----------|-----------|
| (1) General Physical condition is satisfactory | <u> </u> | <u> </u> |
| (2) Underwriters national code is generally
followed | <u> </u> | <u> </u> |
| (3) Pv. Maint. records are complete | <u> </u> | <u> </u> |
| (4) Pv. Maint. Procedures are in use | <u> </u> | <u> </u> |
| (5) Spot check indicate circuits are
properly fused | <u> </u> | <u> </u> |

f. Heating plant control:

- | | | |
|--|-----------|-----------|
| (1) General physical condition is satisfactory | <u> </u> | <u> </u> |
| (2) Firemen have been schooled in best
firing methods | <u> </u> | <u> </u> |
| (3) Preventive maintenance records are
complete | <u> </u> | <u> </u> |
| (4) Preventive Maintenance procedures are used | <u> </u> | <u> </u> |
| (5) Fuel storage is adequate | <u> </u> | <u> </u> |
| (6) Fuel deliveries are satisfactory | <u> </u> | <u> </u> |
| (7) Fuel is suitable | <u> </u> | <u> </u> |

g. Heating plants, domestic type:

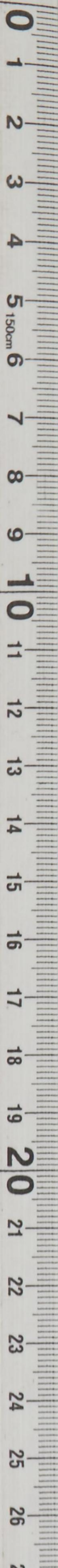
- | | | |
|---|-----------|-----------|
| (1) General Physical condition is satisfactory | <u> </u> | <u> </u> |
| (2) Training program for fireman is
not active | <u> </u> | <u> </u> |
| (3) Preventive maintenance records are complete | <u> </u> | <u> </u> |
| (4) Preventive maintenance procedures are in use | <u> </u> | <u> </u> |
| (5) Fuel is suitable | <u> </u> | <u> </u> |
| (6) Fuel storage is adequate | <u> </u> | <u> </u> |
| (7) Fuel deliveries are satisfactory | <u> </u> | <u> </u> |
| (8) Coal storage facilities are in
good repair | <u> </u> | <u> </u> |

h. Refrigerated storage:

- | | | |
|---|-----------|-------------------------------------|
| (1) General physical condition is satisfactory | <u> </u> | <u> </u> |
| (2) Cubic content is in excess of requirements
or FEC criteria | <u> </u> | <input checked="" type="checkbox"/> |
| (3) Preventive maintenance records are complete | <u> </u> | <u> </u> |
| (4) Preventive maintenance Procedures are
followed | <u> </u> | <u> </u> |

Incl 2³

Incl 2⁴



- | | Yes | No |
|--|-------------------------------------|--------------------------|
| (5) Temperature in rooms is in accordance with design requirements | <input checked="" type="checkbox"/> | <input type="checkbox"/> |
| (6) Operations of the plant appear reliable | <input checked="" type="checkbox"/> | <input type="checkbox"/> |
| (7) Power supply is reliable | <input checked="" type="checkbox"/> | <input type="checkbox"/> |
| (8) Utilization of space permits good circulation | <input checked="" type="checkbox"/> | <input type="checkbox"/> |
| (9) System of defrosting is satisfactory | <input checked="" type="checkbox"/> | <input type="checkbox"/> |

i. Domestic refrigeration, ventilation and air conditioning:

- | | | |
|--|-------------------------------------|--------------------------|
| (1) Facilities are adequate | <input checked="" type="checkbox"/> | <input type="checkbox"/> |
| (2) Air Conditioning has been provided in unauthorized locations | <input checked="" type="checkbox"/> | <input type="checkbox"/> |
| (3) Preventive maintenance records are complete | <input checked="" type="checkbox"/> | <input type="checkbox"/> |
| (4) Preventive maintenance procedures are followed | <input checked="" type="checkbox"/> | <input type="checkbox"/> |

j. FOL systems, fixed and bulk storage installations:

- | | | |
|---|-------------------------------------|--------------------------|
| (1) General physical condition is satisfactory | <input checked="" type="checkbox"/> | <input type="checkbox"/> |
| (2) Preventive maintenance records are complete | <input checked="" type="checkbox"/> | <input type="checkbox"/> |
| (3) Preventive maintenance procedures are followed | <input checked="" type="checkbox"/> | <input type="checkbox"/> |
| (4) Safety rules are enforced; such as those involving smoking, open flames, unauthorized vehicles operating too close and the like | <input checked="" type="checkbox"/> | <input type="checkbox"/> |
| (5) Electric equipment being used is approved for hazardous locations | <input checked="" type="checkbox"/> | <input type="checkbox"/> |
| (6) Lines are controlled periodically to locate leaks and prevent theft | <input checked="" type="checkbox"/> | <input type="checkbox"/> |
| (7) Tanks are painted to prevent deterioration | <input checked="" type="checkbox"/> | <input type="checkbox"/> |
| (8) Lubrication and maintenance instructions for engines and pumping equipment are posted in each pump house | <input checked="" type="checkbox"/> | <input type="checkbox"/> |

k. Rates and procedures:

- | | | |
|--|-------------------------------------|--------------------------|
| (1) The rates for purchased water are the lowest available from the service utility | <input checked="" type="checkbox"/> | <input type="checkbox"/> |
| (2) The rates for purchased electric energy are the lowest available | <input checked="" type="checkbox"/> | <input type="checkbox"/> |
| (3) The rates for purchased gas are the lowest available | <input checked="" type="checkbox"/> | <input type="checkbox"/> |
| (4) Arch and enterprises, theaters, clubs, vending machines and the like, are being billed in accordance with current regulations for utility services furnished | <input checked="" type="checkbox"/> | <input type="checkbox"/> |
| (5) The post engineer is performing, without reimbursement services which are the responsibility of other services | <input checked="" type="checkbox"/> | <input type="checkbox"/> |

l. Personnel. The personnel situation is as follows:

Facility	Foremen :			Operators or Assistants		
	: Recd.:	: Avail.:	: Shortage :	: Recd.:	: Avail.:	: Shortage :

Facility	Personnel
Water plant and distribution system	: Boiler & Stoker 126
	: Water Points 36
Sewage Plant and distribution system	: Roads & Grounds 15
	: Administrative 96
	: Warehouse 21
	: Electric Sub-Sta. 7
Electric Distribution System, Exterior	: Reofer Plant 9
	: Insect & Rodent 6
	: Motor Pool 151
	: Mech. & Skilled 239
Electric Distribution System, Interior	: Fire Station 48
	: Preventive Maint. 106
	:
Heating plants, central	:
Heating plants, Domestic type	:
Refrigerated Storage	:
Domestic Type Refrigeration	:
FOI Systems	:

260 Ind. Personnel, Main Post

m. Technical Manuals.

- (1) The following manuals are applicable to utilities operation and maintenance. Check those found not available to operating and maintenance personnel.
 (List all manuals by name and number)

/s/ CLAY W. Trindal
 Post Engineer

- (2) Action taken to eliminate shortages.

Incl 25

CHECK LIST FOR UTILITIES
 OPERATION AND MAINTENANCE

Camp Crawford

1. CONSERVATION

	Good	Fair	Poor
a. Command Support	<input checked="" type="checkbox"/>	<input type="checkbox"/>	<input type="checkbox"/>
b. Organization	<input checked="" type="checkbox"/>	<input type="checkbox"/>	<input type="checkbox"/>
c. Leadership	<input checked="" type="checkbox"/>	<input type="checkbox"/>	<input type="checkbox"/>
	Is Met	Is Not Met	
d. Water per Captia	<input checked="" type="checkbox"/>	<input checked="" type="checkbox"/>	<input type="checkbox"/>
e. Electric Energy KWH/man	<input checked="" type="checkbox"/>	<input type="checkbox"/>	<input type="checkbox"/>
	Less	Greater	
f. Freon Replacement Target	<input type="checkbox"/>	<input checked="" type="checkbox"/>	<input type="checkbox"/>
g. Freon Consumption Target	<input type="checkbox"/>	<input checked="" type="checkbox"/>	<input type="checkbox"/>

MONTHLY TARGET

2. OPERATIONAL COST

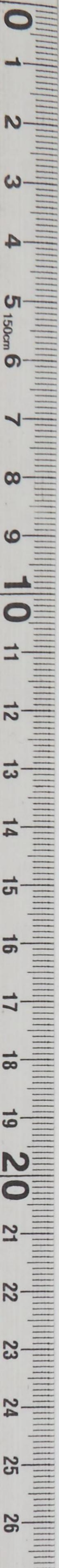
	Correct	Incorrect	
a. Procedure for Handling Population Reports	<input checked="" type="checkbox"/>	<input type="checkbox"/>	
b. Reporting of Consumption of Utility Service based on Estimates (Metering) appears	<input checked="" type="checkbox"/>	<input type="checkbox"/>	
c. Init Operating and Maintenance Cost for:	High	Normal	Low
(1) Water Plants & System	<input type="checkbox"/>	<input type="checkbox"/>	<input checked="" type="checkbox"/>
(2) Electric Plants & System	<input type="checkbox"/>	<input checked="" type="checkbox"/>	<input type="checkbox"/>
(3) Refrigeration	<input type="checkbox"/>	<input checked="" type="checkbox"/>	<input type="checkbox"/>
(4) Sewage Plant & System	<input type="checkbox"/>	<input type="checkbox"/>	<input checked="" type="checkbox"/>
(5) Heating Plants & System	<input checked="" type="checkbox"/>	<input type="checkbox"/>	<input type="checkbox"/>
(6) Shop Operating Cost	<input type="checkbox"/>	<input checked="" type="checkbox"/>	<input type="checkbox"/>

3. OPERATIONS AND MAINTENANCE

	Yes	No
a. Water plant and distribution system:		
(1) General physical condition is satisfactory	<input checked="" type="checkbox"/>	<input type="checkbox"/>
(2) Preventive maintenance record is complete	<input checked="" type="checkbox"/>	<input type="checkbox"/>
(3) Preventive maintenance procedure is used	<input checked="" type="checkbox"/>	<input type="checkbox"/>
(4) Supply at tap is adequate	<input checked="" type="checkbox"/>	<input type="checkbox"/>
(5) Bacteriological history is satisfactory	<input checked="" type="checkbox"/>	<input type="checkbox"/>
(6) System residual chorine is maintained up to FMC Standard	<input checked="" type="checkbox"/>	<input type="checkbox"/>

Del 2

Handwritten: 2nd Lt



- | | Yes | No |
|--|----------|-------|
| (7) From Consumers' view point the water supply is good | <u>X</u> | _____ |
| (8) Maps and records of the distribution system are available | <u>X</u> | _____ |
| (9) Maps and records of the distribution system are complete | <u>X</u> | _____ |
| (10) Emergency procedures to meet major breakdown in the system have been prepared | <u>X</u> | _____ |

b. Sewage plants and collection system:

- | | | |
|---|--------------------|----------|
| (1) The operation of disposal plant is satisfactory | <u>do not have</u> | _____ |
| (2) The plant is considered unsanitary | <u>X</u> | <u>X</u> |
| (3) Discharge to streams or Ocean is considered unsanitary or health hazard | _____ | <u>X</u> |
| (4) The system covers the entire post | <u>X</u> | _____ |
| (5) Additional sewerage disposal measures are required | _____ | <u>X</u> |
| (6) Pit latrines are in use | _____ | <u>X</u> |
| (7) Pit latrines are unsanitary and a health hazard | _____ | <u>X</u> |
| (8) Maps and records of the sewerage system are available | <u>X</u> | _____ |
| (9) Maps and records of the sewerage system are complete | <u>X</u> | _____ |

c. Electric power plants (Portable and fixed):

not applicable

- | | | |
|--|-------|-------|
| (1) General physical condition is satisfactory | _____ | _____ |
| (2) Operations appear good | _____ | _____ |
| (3) Preventive maintenance records are complete | _____ | _____ |
| (4) Preventive Maintenance Procedures are used | _____ | _____ |
| (5) Lubrication charts & maintenance instruction are posted in plants | _____ | _____ |
| (6) Supply of fuel oil is conveniently arranged | _____ | _____ |
| (7) Supply of fuel oil is adequate | _____ | _____ |
| (8) Operating logs are maintained | _____ | _____ |
| (9) Detail plans of the plant are available to assist during emergency repairs | _____ | _____ |

d. Electric distribution system, exterior:

- | | | |
|---|----------|-------|
| (1) General physical condition is satisfactory | <u>X</u> | _____ |
| (2) Preventive maintenance records are complete | <u>X</u> | _____ |



	Yes	No
(3) Preventive maintenance procedures are used	<u>X</u>	<u> </u>
(4) The system is seriously overloaded	<u> </u>	<u>X</u>
(5) Maps and records of the system are available	<u>X</u>	<u> </u>
(6) Maps and records of the systems are complete	<u>X</u>	<u> </u>
(7) Emergency procedure to meet major breakdowns in the system have been prepared	<u>X</u>	<u> </u>
e. Electric distribution systems, interior:		
Japanese Standards.		
(1) General Physical condition is satisfactory	<u>X</u>	<u> </u>
(2) Underwriters national code is generally followed	<u>No</u>	<u>X</u>
(3) Pv. Maint. records are complete	<u>X</u>	<u> </u>
(4) Pv. Maint. Procedures are in use	<u>X</u>	<u> </u>
(5) Spot check indicate circuits are properly fused	<u>X</u>	<u> </u>
f. Heating plant control:		
(1) General physical condition is satisfactory	<u>X</u>	<u> </u>
(2) Firemen have been schooled in best firing methods	<u>X</u>	<u> </u>
(3) Preventive maintenance records are complete	<u>X</u>	<u> </u>
(4) Preventive Maintenance procedures are used	<u>X</u>	<u> </u>
(5) Fuel storage is adequate	<u>X</u>	<u> </u>
(6) Fuel deliveries are satisfactory at present	<u>X</u>	<u> </u>
(7) Fuel is suitable	<u>X</u>	<u> </u>
shortage, trucks and loading equipment.		
g. Heating plants, domestic type:		
(1) General Physical condition is satisfactory	<u>X</u>	<u> </u>
(2) Training program for fireman is not active	<u>X</u>	<u> </u>
(3) Preventive maintenance records are complete	<u>X</u>	<u> </u>
(4) Preventive maintenance procedures are in use	<u>X</u>	<u> </u>
(5) Fuel is suitable	<u>X</u>	<u> </u>
(6) Fuel storage is adequate	<u>X</u>	<u> </u>
(7) Fuel deliveries are satisfactory	<u>??</u>	<u> </u>
(8) Coal storage facilities are in good repair	<u>?</u>	<u> </u>
h. Refrigerated storage:		
(1) General physical condition is satisfactory	<u>X</u>	<u> </u>
(2) Cubic content is in excess of requirements or FEC criteria	<u> </u>	<u>X</u>
(3) Preventive maintenance records are complete	<u>X</u>	<u> </u>
(4) Preventive maintenance Procedures are followed	<u>X</u>	<u> </u>

2223

Handwritten: Jolt



	Yes	No
(5) Temperature in rooms is in accordance with design requirements	<u>X</u>	_____
(6) Operations of the plant appear reliable	<u>X</u>	_____
(7) Power supply is reliable	<u>X</u>	_____
(8) Utilization of space permits good circulation	<u>X</u>	_____
(9) System of defrosting is satisfactory	<u>X</u>	_____
i. Domestic refrigeration, ventilation and air conditioning:		
(1) Facilities are adequate	<u>X</u>	_____
(2) Air Conditioning has been provided in unauthorized locations	_____	<u>X</u>
(3) Preventive maintenance records are complete	<u>X</u>	_____
(4) Preventive maintenance procedures are followed	<u>X</u>	_____
j. FOL systems, fixed and bulk storage installations:		
Bulk storage, operated by M. Otom Point by R & U		
(1) General physical condition is satisfactory	_____	_____
(2) Preventive maintenance records are complete	_____	_____
(3) Preventive maintenance procedures are followed	_____	_____
(4) Safety rules are enforced; such as those involving smoking, open flames, unauthorized vehicles operating too close and the like	_____	_____
(5) Electric equipment being used is approved for hazardous locations	_____	_____
(6) Lines are patrolled periodically to locate leaks and prevent theft	_____	_____
(7) Tanks are painted to prevent deterioration	_____	_____
(8) Lubrication and maintenance instructions for engines and pumping equipment are posted in each pump house	_____	_____
k. Rates and procedures:		
(1) The rates for purchased water are the lowest available from the serving utility	<u>from Japanese power</u>	_____
(2) The rates for purchased electric energy are the lowest available	_____	_____
(3) The rates for purchased gas are the lowest available	_____	<u>No</u>
(4) Amusement enterprises, theaters, clubs, vending machines and the like, are being billed in accordance with current regulations for utility services furnished	<u>Yes</u>	_____
(5) The post engineer is performing without reimbursement services which are the responsibility of other services	_____	_____

CHECK LIST FOR UTILITIES
 OPERATION AND MAINTENANCE
 Camp Sendai

1. CONSERVATION

	Good	Fair	Poor
a. Command Support	<input checked="" type="checkbox"/>	<input type="checkbox"/>	<input type="checkbox"/>
b. Organization	<input checked="" type="checkbox"/>	<input type="checkbox"/>	<input type="checkbox"/>
c. Leadership	<input checked="" type="checkbox"/>	<input type="checkbox"/>	<input type="checkbox"/>
d. Water per Captia	Is Met	Is Not Met	
e. Electric Energy KWH/man	<input checked="" type="checkbox"/>	<input type="checkbox"/>	x 500 gpd

MONTHLY TARGET

	Less	Greater
f. Freon Replacement Target	<input type="checkbox"/>	<input checked="" type="checkbox"/>
g. Freon Consumption Target	<input type="checkbox"/>	<input checked="" type="checkbox"/>

2. OPERATIONAL COST

	Correct	Incorrect	
a. Procedure for Handling Population Reports	<input checked="" type="checkbox"/>	<input type="checkbox"/>	
b. Reporting of Consumption of Utility Service based on Estimates (Metering) appears	Elect. meter	water meter. <input checked="" type="checkbox"/>	
c. Unit Operating and Maintenance Cost for:	High	Normal	Low
(1) Water Plants & System	<input type="checkbox"/>	<input type="checkbox"/>	<input checked="" type="checkbox"/>
(2) Electric Plants & System	<input type="checkbox"/>	<input type="checkbox"/>	<input checked="" type="checkbox"/>
(3) Refrigeration	<input checked="" type="checkbox"/>	<input type="checkbox"/>	<input type="checkbox"/>
(4) Sewage Plant & System	<input checked="" type="checkbox"/>	<input type="checkbox"/>	<input type="checkbox"/>
(5) Heating Plants & System	<input type="checkbox"/>	<input checked="" type="checkbox"/>	<input type="checkbox"/>
(6) Shop Operating Cost	<input type="checkbox"/>	<input checked="" type="checkbox"/>	<input type="checkbox"/>

3. OPERATIONS AND MAINTENANCE

	Yes	No
a. Water plant and distribution system:		
(1) General physical condition is satisfactory	<input checked="" type="checkbox"/>	<input type="checkbox"/>
(2) Preventive maintenance record is complete	<input checked="" type="checkbox"/>	<input type="checkbox"/>
(3) Preventive maintenance procedure is used	<input checked="" type="checkbox"/>	<input type="checkbox"/>
(4) Supply at tap is adequate	<input checked="" type="checkbox"/>	<input type="checkbox"/>
(5) Bacteriological history is satisfactory	<input checked="" type="checkbox"/>	<input type="checkbox"/>
(6) System residual chorine is maintained up to FMC Standard	<input checked="" type="checkbox"/>	<input type="checkbox"/>

Incl 2'



Incl 2^u



- | | Yes | No |
|--|-------------------------------------|--------------------------|
| (7) From Consumers' view point the water supply is good | <input checked="" type="checkbox"/> | <input type="checkbox"/> |
| (8) Maps and records of the distribution system are available | <input checked="" type="checkbox"/> | <input type="checkbox"/> |
| (9) Maps and records of the distribution system are complete | <input type="checkbox"/> | <input type="checkbox"/> |
| (10) Emergency procedures to meet major breakdown in the system have been prepared | <input checked="" type="checkbox"/> | <input type="checkbox"/> |

b. Sewage plants and collection system:

- | | | |
|---|-------------------------------------|-------------------------------------|
| (1) The operation of disposal plant is satisfactory | <input checked="" type="checkbox"/> | <input type="checkbox"/> |
| (2) The plant is considered unsanitary | <input type="checkbox"/> | <input checked="" type="checkbox"/> |
| (3) Discharge to streams or Ocean is considered unsanitary or health hazard | <input type="checkbox"/> | <input checked="" type="checkbox"/> |
| (4) The system covers the entire post | <input checked="" type="checkbox"/> | <input type="checkbox"/> |
| (5) Additional sewerage disposal measures are required | <input checked="" type="checkbox"/> | <input type="checkbox"/> |
| (6) Pit latrines are in use | <input type="checkbox"/> | <input checked="" type="checkbox"/> |
| (7) Pit latrines are unsanitary and a health hazard | <input type="checkbox"/> | <input checked="" type="checkbox"/> |
| (8) Maps and records of the sewerage system are available | <input checked="" type="checkbox"/> | <input type="checkbox"/> |
| (9) Maps and records of the sewerage system are complete | <input checked="" type="checkbox"/> | <input type="checkbox"/> |

c. Electric power plants (Portable and fixed):

- | | | |
|--|-------------------------------------|--------------------------|
| (1) General physical condition is satisfactory | <input checked="" type="checkbox"/> | <input type="checkbox"/> |
| (2) Operations appear good | <input checked="" type="checkbox"/> | <input type="checkbox"/> |
| (3) Preventive maintenance records are complete | <input checked="" type="checkbox"/> | <input type="checkbox"/> |
| (4) Preventive Maintenance Procedures are used | <input checked="" type="checkbox"/> | <input type="checkbox"/> |
| (5) Lubrication charts & maintenance instruction are posted in plants | <input checked="" type="checkbox"/> | <input type="checkbox"/> |
| (6) Supply of fuel oil is conveniently arranged | <input checked="" type="checkbox"/> | <input type="checkbox"/> |
| (7) Supply of fuel oil is adequate | <input checked="" type="checkbox"/> | <input type="checkbox"/> |
| (8) Operating logs are maintained | <input checked="" type="checkbox"/> | <input type="checkbox"/> |
| (9) Detail plans of the plant are available to assist during emergency repairs | <input checked="" type="checkbox"/> | <input type="checkbox"/> |

d. Electric distribution system, exterior:

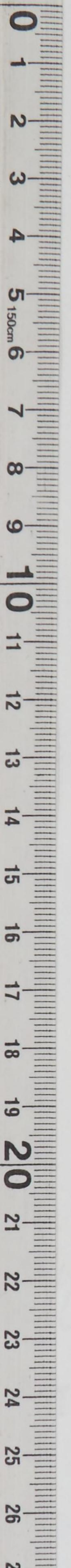
- | | | |
|---|-------------------------------------|--------------------------|
| (1) General physical condition is satisfactory | <input checked="" type="checkbox"/> | <input type="checkbox"/> |
| (2) Preventive maintenance records are complete | <input checked="" type="checkbox"/> | <input type="checkbox"/> |



	Yes	No
(3) Preventive maintenance procedures are used	<input checked="" type="checkbox"/>	<input type="checkbox"/>
(4) The system is seriously overloaded	<input type="checkbox"/>	<input checked="" type="checkbox"/>
(5) Maps and records of the system are available	<input checked="" type="checkbox"/>	<input type="checkbox"/>
(6) Maps and records of the systems are complete	<input checked="" type="checkbox"/>	<input type="checkbox"/>
(7) Emergency procedure to meet major breakdowns in the system have been prepared	<input checked="" type="checkbox"/>	<input type="checkbox"/>
e. Electric distribution systems, interior:		
(1) General Physical condition is satisfactory	<input checked="" type="checkbox"/>	<input type="checkbox"/>
(2) Underwriters national code is generally followed Japanese Standards	<input checked="" type="checkbox"/>	<input type="checkbox"/>
(3) Pv. Maint. records are complete	<input checked="" type="checkbox"/>	<input type="checkbox"/>
(4) Pv. Maint. Procedures are in use	<input checked="" type="checkbox"/>	<input type="checkbox"/>
(5) Spot check indicate circuits are properly fused	<input checked="" type="checkbox"/>	<input type="checkbox"/>
f. Heating plant control:		
(1) General physical condition is satisfactory	<input checked="" type="checkbox"/>	<input type="checkbox"/>
(2) Firemen have been schooled in best firing methods	<input checked="" type="checkbox"/>	<input type="checkbox"/>
(3) Preventive maintenance records are complete	<input checked="" type="checkbox"/>	<input type="checkbox"/>
(4) Preventive Maintenance procedures are used	<input checked="" type="checkbox"/>	<input type="checkbox"/>
(5) Fuel storage is adequate	<input checked="" type="checkbox"/>	<input type="checkbox"/>
(6) Fuel deliveries are satisfactory	<input checked="" type="checkbox"/>	<input type="checkbox"/>
(7) Fuel is suitable	<input checked="" type="checkbox"/>	<input type="checkbox"/>
g. Heating plants, domestic type:		
(1) General Physical condition is satisfactory	<input checked="" type="checkbox"/>	<input type="checkbox"/>
(2) Training program for fireman is not active	<input checked="" type="checkbox"/>	<input type="checkbox"/>
(3) Preventive maintenance records are complete	<input checked="" type="checkbox"/>	<input type="checkbox"/>
(4) Preventive maintenance procedures are in use	<input checked="" type="checkbox"/>	<input type="checkbox"/>
(5) Fuel is suitable	<input checked="" type="checkbox"/>	<input type="checkbox"/>
(6) Fuel storage is adequate	<input checked="" type="checkbox"/>	<input type="checkbox"/>
(7) Fuel deliveries are satisfactory	<input checked="" type="checkbox"/>	<input type="checkbox"/>
(8) Coal storage facilities are in good repair	<input checked="" type="checkbox"/>	<input type="checkbox"/>
h. Refrigerated storage:		
(1) General physical condition is satisfactory	<input checked="" type="checkbox"/>	<input type="checkbox"/>
(2) Cubic content is in excess of requirements or FEC criteria	<input type="checkbox"/>	<input type="checkbox"/>
(3) Preventive maintenance records are complete	<input checked="" type="checkbox"/>	<input type="checkbox"/>
(4) Preventive maintenance Procedures are followed	<input checked="" type="checkbox"/>	<input type="checkbox"/>

Incl 2³

Incl 2^e



	Yes	No
(5) Temperature in rooms is in accordance with design requirements	<input checked="" type="checkbox"/>	<input type="checkbox"/>
(6) Operations of the plant appear reliable	<input checked="" type="checkbox"/>	<input type="checkbox"/>
(7) Power supply is reliable	<input checked="" type="checkbox"/>	<input type="checkbox"/>
(8) Utilization of space permits good circulation	<input checked="" type="checkbox"/>	<input type="checkbox"/>
(9) System of defrosting is satisfactory	<input checked="" type="checkbox"/>	<input type="checkbox"/>
i. Domestic refrigeration, ventilation and air conditioning:		
(1) Facilities are adequate	<input checked="" type="checkbox"/>	<input type="checkbox"/>
(2) Air Conditioning has been provided in unauthorized locations	<input type="checkbox"/>	<input checked="" type="checkbox"/>
(3) Preventive maintenance records are complete	<input checked="" type="checkbox"/>	<input type="checkbox"/>
(4) Preventive maintenance procedures are followed	<input checked="" type="checkbox"/>	<input type="checkbox"/>
j. FOL systems, fixed and bulk storage installations:		
(1) General physical condition is satisfactory	<input type="checkbox"/>	N. A.
(2) Preventive maintenance records are complete	<input type="checkbox"/>	<input type="checkbox"/>
(3) Preventive maintenance procedures are followed	<input type="checkbox"/>	<input type="checkbox"/>
(4) Safety rules are enforced; such as those involving smoking, open flames, unauthorized vehicles operating too close and the like	<input type="checkbox"/>	<input type="checkbox"/>
(5) Electric equipment being used is approved for hazardous locations	<input type="checkbox"/>	<input type="checkbox"/>
(6) Lines are patrolled periodically to locate leaks and prevent theft	<input type="checkbox"/>	<input type="checkbox"/>
(7) Tanks are painted to prevent deterioration	<input type="checkbox"/>	<input type="checkbox"/>
(8) Lubrication and maintenance instructions for engines and pumping equipment are posted in each pump house	<input type="checkbox"/>	<input type="checkbox"/>
k. Rates and procedures:		
(1) The rates for purchased water are the lowest available from the serving utility	<input checked="" type="checkbox"/>	<input type="checkbox"/>
(2) The rates for purchased electric energy are the lowest available	<input checked="" type="checkbox"/>	<input type="checkbox"/>
(3) The rates for purchased gas are the lowest available	<input type="checkbox"/>	<input type="checkbox"/>
(4) Amusement enterprises, theaters, clubs, vending machines and the like, are being billed in accordance with current regulations for utility services furnished	<input type="checkbox"/>	<input checked="" type="checkbox"/>
(5) The post engineer is performing without reimbursement services which are the responsibility of other services	<input checked="" type="checkbox"/>	Yes

1. Personnel. The personnel situation is as follows:

Facility	Foremen :			Operators or Assistants		
	: Recd.:	: Avail.:	: Shortage :	: Recd.:	: Avail.:	: Shortage :
Personnel Camp Sendai						
Water plant and distribution system	:	:	:	:	:	:
	:	Boiler Plants.	101	:	- 4 plants.	:
Sewage Plant and distribution system	:	Water Point & bus	19	:		:
Electric Distribution System, Exterior	:	Exterior Elect.	39	:		:
	:	Interior Elect.	33	:		:
	:	Carpt. Shop	55	:		:
	:	Plumbing	76	:		:
	:	Administrative	46	:		:
Electric Distribution System, Interior	:	Motor Pool	78	:		:
	:	Roads & Grounds	118	:		:
	:	Fire	101	:		:
	:	Drivers	71	:		:
Heating plants, central	:			:		:
Heating plants, Domestic type	:	Painters	28	:		:
	:	Bricklayers	24	:		:
Refrigerated Storage	:			:		:
Domestic Type Refrigeration	:			:		:
ROI Systems	:			:		:

m. Technical Manuals.

- (1) The following manuals are applicable to utilities operation and maintenance. Check those found not available to operating and maintenance personnel. available (List all manuals by name and number)

Personnel	
Camp Fowler	39
172 Sta. Hospl	82
Park Hotel	66
Camp Loeper	20
MCAT	4
House # 10	2

- (2) Action taken to eliminate shortages.

Incl 25

GENERAL HEADQUARTERS
 AIR BASE COMMAND
 Office of the Engineer

Buildings & Structures Survey Check List

Post Camp Schimmelfennig Survey Made By Bell Date 11 Oct 49

Post Engineer _____ Accompanied by _____ Title _____

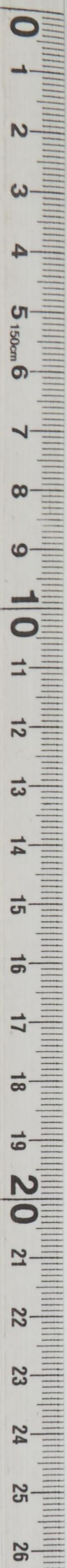
LEGEND: X - Major Deficiencies War Dept, Technical Manuals
 O - Minor Deficiencies applicable to inspection:
 (1), (2), etc. - See notes

ITEM	COND	NOTES
<u>Preventive Maintenance</u>		
<u>Exterior</u>		
Foundation		
Walls		
Platforms		
Windows, Doors & Trim		
Screens		
Porches and Steps		
Roofs		
Paint		
Sheet Metal		
Coal boxes and bins		
Underfloor ventilation		
<u>Interior</u>		
Floors and coverings		
Walls and ceilings		
Structural members		
Doors		
Hardware		
Paint		
<u>Shop Operation</u>		
Personnel problems discussed with Post Engineer (Yes), (No), (None)		
Personnel requirements (Increase), (Decrease), (No change)		
<u>Miscellaneous Structures</u>		

CHECK LIST RECEIVED:
 Signed by Post Engineer _____
 Post Engineer _____
 11 Oct 49 _____
 Date _____

Bell _____
 Engineer, CB, CHQ, FEC

Incl 3'



GENERAL HEADQUARTERS
 FAR EAST COMMAND
 Office of the Engineer

incl 3

Refuse Collection & Disposal Survey Check List

Post Camp Schimmelpfennig Surveyed by Bell Date 11 Oct 49

Post Engineer Major Trindal Accompanied by _____ Title _____

LEGEND: ND - No deficiencies Dept. of the Army Technical
 X - Major deficiencies Manuals applicable to survey:
 O - Minor deficiencies TM 5-600, 602 and 634
 (1), (2), etc. - See Notes

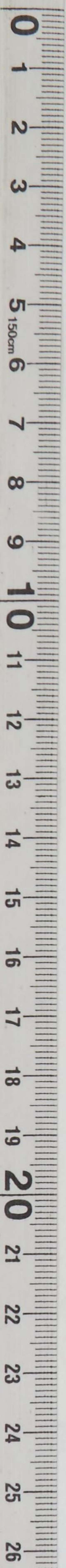
ITEM	NOTES	
	Yes	No
Appropriate Technical Manuals Readily Available to Personnel	X	
Correction of Irregularities Reported at Last Survey	-	
Operation of Collection System	Satisfactory	None Ministry Jap.
Technical Operation of Disposal Facilities	X	
Condition of Maintenance & Repair of Equipment	N.A.	
Compliance with DA Preventive Maintenance Program	Satisfactory	
Completeness and Accuracy of Operating Logs and/or Reports	X	
Precautions taken Against Occupation Hazards	X	
Status of Current Projects	X	
Accounts No. 3321.1, 12, .3, .4, .5 & .6	X	
Propriety of Charges	X	
Personnel Problems Discussed with Post Engineer	Yes	X
Personnel Requirements	None	

CHECK LIST RECEIVED:

Signed by Post Engineer
 Post Engineer

BELL
 Engineer, OE, GHQ, FEC

Date 11 Oct 49



GENERAL HEAD QUARTERS
 FAR EAST COMMAND
 Office of the Engineer

Roads, Runways and Railroads Inspection Check List

Post Camp Schimmelpfennig Inspected by Bell Date 11 Oct 49

Post Engineer _____ Accompanied by _____ Title _____

LEGEND: X - Major deficiencies
 O - Minor deficiencies
 (1), (2), etc. - See Notes

War Department Technical
 Manuals applicable to
 Inspections:

ITEM	DEFICIENCIES	NOTES
Patching Roads and Sidewalks		15 men in road crew continually working on maintenance patching, shoulder repair, grading and cleaning ditches
Sealing Roads		
Concrete Pavement Joints		
Road Shoulders		
Parking Areas		
Drains and Ditches		
R. R. Road Bed		
R. R. Trackage		
Patching (Air Fields)		N.A.
Sealing (Air Fields)		X
Concrete Pav. Jts. (Air Fields)		X
Drains and Ditches (Air Fields)		
Cost Accounts - Propriety of Charges		O.K.
Personnel problems discussed with Post Engineer (Yes), (No), (None)		O.K.
Personnel requirements (increase), (decrease), (No Change)		O.K.

CHECK LIST RECEIVED:

Signed by Post Engineer
 Post Engineer

11-Oct-49
 Date

BELL
 Engineer, CG, GHQ, FEC

8133

Incl 34

OFFICE OF THE ENGINEER
 GENERAL HEADQUARTERS
 FAR EAST COMMAND

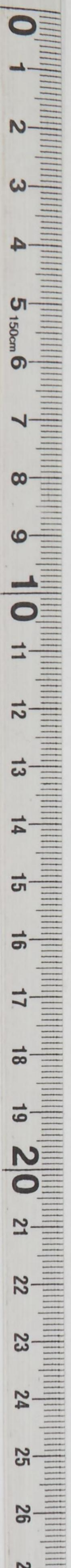
INSECT AND RODENT CONTROL SURVEY REPORT

Command Schimmelpfennig

Date 11 Oct 49

PERSONS SERVED:

ITEM	POOR	FAIR	GOOD	SUPER.	LAST	S. NOTE
	:	:	:	:	IOB	REPT.
Coordination with Surgeon	:	:	:	X	:	:
Utilization of Survey	:	:	:	X	:	:
Adequacy of control	:	:	:	X	:	:
Availability of Tech. Manual	:	:	:	X	:	:
Adequacy of supervision	:	:	:	X	:	:
Training of crew	:	:	:	X	:	:
Adequacy of equipment & supp.	:	:	:	1	:	Traps required
Adequacy of vehicles	:	:	:	X	:	:
Maintenance and repair	:	:	:	X	:	:
Storage & safeguarding of poisons & spec. sup.	:	:	:	X	:	:
Activity of preventive prog.	:	:	:	X	:	:
Operation of waste disposal	:	:	:	X	:	:
Control of disposal by PE	:	:	:	X	:	:
Segregation & salvage	:	:	:	X	:	:
Control of unauth. dumps	:	:	:	X	:	:
Completeness & accuracy of logs and reports	:	:	:	X	:	:
Accounting control	:	:	:	X	:	:
Adequacy of personnel no.	:	:	:	X	:	:
DISCUSSED & NOTED:						



GENERAL HEADQUARTERS
 FAR EAST COMMAND
 Office of the Engineer

Grounds Maintenance, Dust & Erosion Control Inspection Check List

Post Camp Schimmelpfennig Inspected by Bell Date 11 Oct 59

Post Engineer Major Trindal Accompanied by _____ Title _____

LEGEND: X - Major Deficiencies
 O - Minor Deficiencies
 (1), (2), etc. - See Notes

War Dept. Technical Manuals
 Applicable to inspection:

ITEM	Improved Grounds	Other Post Areas	NOTES
Are W.D. I/M's readily available to interested personnel? (Yes), (No)	yes		
Preventive Maintenance	yes		
Policing mowing hazards	yes		
Rolling grassed areas	yes		
Fertilizing, seeding, sodding	no		
Mowing	yes		
Temporary dust control measures	yes		
Wood and poisonous plant control	yes		
Pruning and spraying trees & shrubs	no		
Fire hazard control	yes		
Insect control, grassed areas	yes		
Vegetated drainageways	no		
Gutters	yes		
Diversion Terraces	no		
Sub-surface drains	yes		
Inlets and Catch Basins	yes		
Culverts and headwalls	yes		
Adequacy of grounds equipment	yes		
Traffic Control	yes		
Cost Accounts - Propriety of Charges	yes		
Personnel problems discussed with Post Engineer (Yes), (No) , (None)	yes		
Personnel requirements (Increase) (Decrease) , (No Change)	yes		

CHECK LIST RECEIVED:

Signed by Post Engineer
 Post Engineer

11-Oct-59
 Date

BELL
 Engineer, CB, GHQ, FOC

20/35

GENERAL HEADQUARTERS
 FAR EAST COMMAND
 Office of the Engineer

Construction and shop equipment Survey Check List

Post Schmalpfennig accompanied by _____ Date _____

LEGEND: K - Major Deficiencies
 O - Minor Deficiencies
 (1), (2) etc. - See notes

W.R. Dept. Technical Manuals
 applicable to survey:

ITEM	DEFICIENCIES	NOTES
<u>Preventive Maintenance</u>	good	
<u>Construction Equipment</u>	yes	
<u>Coal Handling Equipment</u>	none	
<u>Shop Equipment</u>	yes	
<u>Mechanical Condition</u>		
<u>Construction Equipment</u>	good	
<u>Coal Handling Equipment</u>	none	
<u>Shop Equipment</u>	good	
<u>Hand Tools</u>	good	
<u>Operator Maintenance</u>		
<u>Construction Equipment</u>	good	
<u>Coal Handling Equipment</u>	none	
<u>Shop Equipment</u>	good	
<u>Equipment Repair Shop</u>	good	
<u>Repairs</u>	good	
<u>Equipment Requirements</u>		Short Ord. equipment 13 Ord. deadline
<u>Excess Equipment</u>	none	
<u>Unservicable equipment</u>	1 truck	
<u>Storage of Equipment</u>	open storage	
<u>Account 66-00 - Propriety of Charges</u>	yes	
<u>Personnel problems discussed with Post Engineer</u>		(xxxx), (xxxx), (None)
<u>Personnel requirements</u>		(xxxx), (xxxx), (No change)

CHECK LIST RECEIVED:

/s/ GLEN W. Trindal
 Post Engineer Major, US

11 Oct 49
 Date

/s/ DEAN W. BELL
 Engineer, COL, GHQ, FEC

GENERAL HEADQUARTERS
 AIR BASE COMMAND
 Office of the Engineer

Sheet 1 of 6

Buildings & Structures Survey Check List

Post Crawford Survey Made By Bell Date 4 Oct 49

Post Engineer W. R. Willis Maj. Accompanied by B Title _____

LEGEND: X - Major Deficiencies
 O - Minor Deficiencies
 (1), (2), etc. - See notes

War Dept, Technical Manuals
 applicable to inspection:

ITEM	Building Nos.	NOTES
Preventive Maintenance		program in effect
Exterior		
Foundation		
Walls	511 Buildings on post. 1173	
Platforms		
Windows, Doors & Trim		1st personnel for Camp Crawford and 8 off post facilities. Buildings in good condition.
Screens		plumbing satisfactory, requiring continuous
Porches and Steps		maintenance and repairs parts and fixtures.
Roofs		are critical.
Paint		
Sheet Metal		
Coal boxes and bins		
Underfloor ventilation		
Interior		
Floors and coverings		
Walls and ceilings		
Structural members		
Doors		
Hardware		
Paint		interior trim should be painted.
Shop Operation		
Personnel problems discussed with Post Engineer (Yes), (No), (None)		Yes, requires more personnel
Personnel requirements (Increase), (Decrease), (No change)		
Miscellaneous Structures		

CHECK LIST RECEIVED:
W. R. Willis Maj. CE
 Post Engineer
4 Oct 1949
 Date

Bell
 Engineer, OE, GHQ, FEC

2nd 3'



GENERAL HEADQUARTERS
 FAR EAST COMMAND
 Office of the Engineer

Refuse Collection & Disposal Survey Check List

Post Crawford Surveyed by Bell Date 4 Oct 49

Post Engineer W. R. Willis Major Accompanied by P.E. Title _____

LEGEND: ND - No deficiencies
 X - Major deficiencies
 O - Minor deficiencies
 (1), (2), etc. - See Notes

Dept. of the Army Technical
 Manuals applicable to survey:
 TM 5-600, 602 and 634

ITEM	NOTES	
	Yes	No
Appropriate Technical Manuals Readily Available to Personnel	X	
Correction of Irregularities Reported at Last Survey	?	
Operation of Collection System	X	Japanese contract, do hauling with own equipment.
Technical Operation of Disposal Facilities	X	
Condition of Maintenance & Repair of Equipment	X	
Compliance with DA Preventive Maintenance Program	X	
Completeness and Accuracy of Operating Logs and/or Reports		No reports necessary.
Precautions taken Against Occupation Hazards		All vehicles sprayed on entering camp.
Status of Current Projects		_____
Accounts No. 3321.1, 12,.3,.4, .5 & .6		_____
Propriety of Charges	X	
Personnel Problems Discussed with Post Engineer	Yes X None	No X
Personnel Requirements	X None	Increase Decrease

CHECK LIST RECEIVED:

W. R. Willis Maj. CE
 Post Engineer

Bell
 Engineer, OE, GHQ, FEC

Date 4 Oct 49

GENERAL HEADQUARTERS
 FAR EAST COMMAND
 Office of the Engineer

Construction and Shop Equipment Survey Check List

Post Camp Crawford accompanied by _____ Date 4 Oct 49

LEGEND: K - Major Deficiencies
 O - Minor Deficiencies
 (1), (2) etc. - See notes

WAR Dept. Technical Manuals
 applicable to survey:

ITEM	Satisfactory EXCELLENT	NOTES
<u>Preventive Maintenance</u>		
Construction Equipment	Yes	Individual operators assigned to each piece of equipment and are responsible for preventive maintenance daily.
Coal Handling Equipment & Snow	Yes	
Shop Equipment	Yes	
<u>Mechanical Condition</u>		
Construction Equipment	Excellent	
Coal Handling Equipment	Good	
Shop Equipment	Good	
Hand Tools	Good	
<u>Operator Maintenance</u>		
Construction Equipment	Good	
Coal Handling Equipment	Good	
Shop Equipment	Good	
Equipment Repair Shop	Good Condition	
Repairs	Very little back log	
Equipment Requirements	Short dumps for coal hauling, cinder and snow	
Excess Equipment	None	
Unservicable equipment	2 pieces deadlined	
Storage of Equipment	Satisfactory	
Account 3112.2 <u>3112.2</u> - Propriety of Charges	Yes	
Personnel problems discussed with Post Engineer (Yes), (No) , (None)		
Personnel requirements (Increase), (Decrease) , (No change)		

CHECK LIST RECEIVED:

W. R. Willis, Major, CE
 Post Engineer

4 Oct 49
 Date

/s/ DEAN W. BELL
 Engineer, OL, GHQ, FEC

3³

GENERAL HEADQUARTERS
 FAR EAST COMMAND
 Office of the Engineer

Grounds Maintenance, Dust & Erosion Control Inspection Check List

Post Camp Crawford Inspected by D. W. Bell Date 4 Oct 49

Post Engineer W. R. Willis Accompanied by _____ Title _____

LEGEND: X - Major Deficiencies
 O - Minor Deficiencies
 (1), (2), etc. - See Notes

War Dept. Technical Manuals
 Applicable to inspection:

ITEM	Improved Grounds	Other Post Areas	NOTES
Are W.D. T/M's readily available to interested personnel? (Yes), (No)			
Preventive Maintenance	Yes		
Policing mowing hazards	Yes		
Rolling grassed areas	Yes, when required		
Fertilizing, seeding, sodding	Yes		
Mowing	Yes		
Temporary dust control measures	No		
Weed and poisonous plant control	--		
Pruning and spraying trees & shrubs	--		
Fire hazard control	Yes		
Insect control, grassed areas	Yes		
Vegetated drainageways	--		
Gutters	--		
Diversion Terraces	--		
Sub-surface drains	Satisfactory		
Inlets and Catch Basins	--		
Culverts and headwalls	--		
Adequacy of grounds equipment	Ample		
Traffic Control	O. K.		
Cost Accounts - Propriety of Charges	O. K.		
Personnel problems discussed with Post Engineer (Yes), (No) , (None)			
Personnel requirements (Increase) (Decrease) , (No Change)		When possible	

CHECK LIST RECEIVED:

W. R. Willis, Major, CE
 Post Engineer

4 Oct 49
 Date

DEAN W. BELL
 Engineer, CE, CHQ, FIC

SIR: 5 of 6

GENERAL HEAD QUARTERS
 FAR EAST COMMAND
 Office of the Engineer

Roads, Runways and Railroads Inspection Check List

Post Granford Inspected by Bell Date 4 Oct 49

Post Engineer Major W. B. Millie Accompanied by _____ Title _____

LEGEND: X - Major deficiencies
 O - Minor deficiencies
 (1), (2), etc. - See Notes

War Department Technical
 Manuals applicable to
 Inspections:

ITEM	DEFICIENCIES	NOTES
Patching Roads and Sidewalks	program underway.	asphalt
Sealing Roads	no work	
Concrete Pavement Joints	" "	
Road Shoulders	repairing in Dependent Housing Area	
Parking Areas	reparing with binders.	
Drains and Ditches	No work	
R. R. Road Bed	" "	
R. R. Trackage	" "	
Patching (Air Fields)	" "	
Sealing (Air Fields)	" "	
Concrete Pav. Jts. (Air Fields)	" "	
Drains and Ditches (Air Fields)	" "	
Cost Accounts - Propriety of Charges	OK	
Personnel problems discussed with Post Engineer (Yes), (No), (None)	increase required	
Personnel requirements (Increase), (Decrease), (No Change)		

CHECK LIST RECEIVED:

W. B. Millie, Maj. Gen.
 Post Engineer

4 Oct. 49
 Date

Bell
 Engineer, OE, CHQ, FEC

#35

Sheet 6 of 6

OFFICE OF THE ENGINEER
 GENERAL HEADQUARTERS
 FAR EAST COMMAND

INSECT AND RODENT CONTROL SURVEY REPORT

Command Crawford

Date 4 Oct 49

PERSONS SEEN:

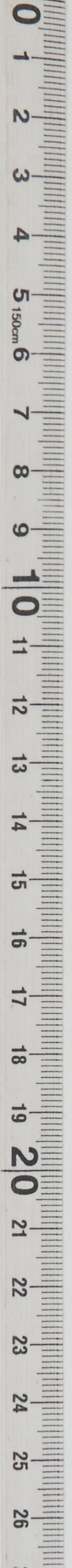
ITEM	POOR	FAIR	GOOD	SUPER.	LAST	SEE NOTE
	:	:	:	:	ICR	REPT.
Coordination with Surgeon	:	:	:	X	:	:
Utilization of Survey	:	:	:	X	:	:
Adequacy of control	:	:	:	X	:	:
Availability of Tech. Manual	:	:	:	X	:	:
Adequacy of supervision	:	:	X	:	:	:
Training of crew	:	:	X	:	:	:
Adequacy of equipment & supp.	:	:	X	:	:	:
Adequacy of vehicles	:	:	X	:	:	:
Maintenance and repair	:	:	X	:	:	:
Storage & safeguarding of poisons & spec. sup.	:	:	X	:	:	:
Activity of preventive prog.	:	:	X	:	:	:
Operation of waste disposal	:	:	:	:	:	Waterborne to river with no treatment
Control of disposal by PE	:	:	:	:	:	:
Segregation & salvage	:	:	X	:	:	:
Control of unauth. dumps	:	:	X	:	:	:
Completeness & accuracy of logs and reports	:	:	X	:	:	:
Accounting control	:	:	X	:	:	:
Adequacy of personnel no.	:	:	X	:	:	:

DISCUSSED & MOVED:

H. R. Hillis Maj. TR.
 POST ENGINEER

4 Oct. 49
 DATE

2-11
 ENTOMOLOGIST



#36

Buildings & Structures Survey Check List

Post Camp Sendai Survey Made By Bell Date 10 Oct 49

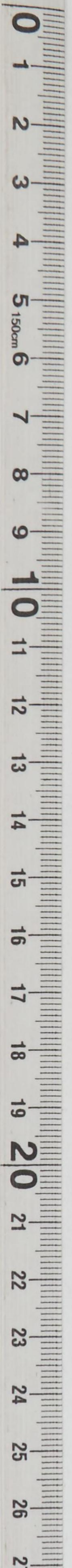
Post Engineer Lt. Col. Frimann Accompanied by _____ Title _____

LEGEND: X - Major Deficiencies
O - Minor Deficiencies
(1), (2), etc. - See notes
War Dept, Technical Manuals
applicable to inspection:

ITEM	NOTES
Preventive Maintenance	<u>four trucks operating</u>
Exterior	
Foundation	
Walls	
Platforms	
Windows, Doors & Trim	
Screens	
Porches and Steps	
Roofs	
Paint	
Sheet Metal	
Coal boxes and bins	
Underfloor ventilation	
Interior	
Floors and coverings	
Walls and ceilings	
Structural members	
Doors	
Hardware	
Paint	
Shop Operation	
Personnel problems discussed with Post Engineer (Yes), (No), (None)	
Personnel requirements (Increase), (Decrease), (No change)	
Miscellaneous Structures	

CHECK LIST RECEIVED:
Signed by Post Engineer
Post Engineer
10 Oct 49
Date
Bell
Engineer, CE, SHQ, FEC

Diell 3'



Incl 32

GENERAL HEADQUARTERS
 FAR EAST COMMAND
 Office of the Engineer

Refuse Collection & Disposal Survey Check List

Post Camp Sendai Surveyed by Bell Date 10 Oct 49

Post Engineer Lt. Col Primann Accompanied by B.S. Title _____

LEGEND: ND - No deficiencies
 X - Major deficiencies
 O - Minor deficiencies
 (1), (2), etc. - See Notes

Dept. of the Army Technical
 Manuals applicable to survey:
 TM 5-600, 602 and 634

ITEM	NOTES	
	Yes	No
Appropriate Technical Manuals Readily Available to Personnel	X	
Correction of Irregularities Reported at Last Survey		
Operation of Collection System		Supervise work by Home Ministry, Jap.
Technical Operation of Disposal Facilities		X
Condition of Maintenance & Repair of Equipment		Good
Compliance with DA Preventive Maintenance Program		Partial
Completeness and Accuracy of Operating Logs and/or Reports		Good
Precautions taken Against Occupation Hazards		Good
Status of Current Projects		Good
Accounts No. 3321.1, 12, .3, .4, .5 & .6		
Propriety of Charges		
Personnel Problems Discussed with Post Engineer	<input checked="" type="checkbox"/>	No
Personnel Requirements	None	Increase Decrease

CHECK LIST RECEIVED:

 Post Engineer
 Date _____

Dean H. Bell
 Engineer, OE, GHQ, FEC

GENERAL HEADQUARTERS
 FAR EAST COMMAND
 Office of the Engineer

Construction and Shop Equipment Survey Check List

Post Camp Serial accompanied by _____ Date 10 Oct 49

LEGEND: X - Major Deficiencies
 O - Minor Deficiencies
 (1), (2) etc. - See notes

WAR Dept. Technical Manuals
 applicable to survey:

ITEM	DEFICIENCIES	NOTES
<u>Preventive Maintenance</u>		
Construction Equipment	Good	
Coal Handling Equipment	None	
Shop Equipment	Good	
<u>Mechanical Condition</u>		
Construction Equipment	Good	
Coal Handling Equipment	None	
Shop Equipment	Good	
Hand Tools	Good	
<u>Operator Maintenance</u>		
Construction Equipment	Good	
Coal Handling Equipment	None	
Shop Equipment	Good	
Equipment Repair Shop	Good	
Repairs	Good	
Equipment Requirements	None	
Excess Equipment	None	
Unserviceable equipment	None	
Storage of Equipment	Open	
Account 66-00 - Proportion of Charges	Yes	
Personnel problems discussed with Post Engineer (Yes), (No)xxxxxxxxx	X	
Personnel requirements (xxxxxxxxxxxxx), (Decrease), (No one)	X	

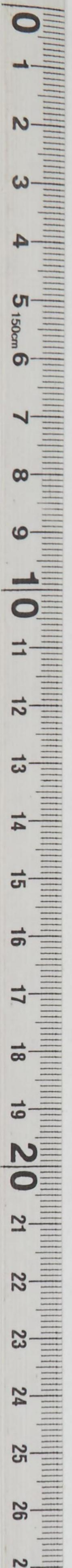
CHECK LIST RECEIVED

Signed by Post Engineer
 Post Engineer

10 Oct 49
 Date

Dean H. Bell
 Engineer, CE, GHQ, FEC

Incl 33



Incl 34

GENERAL HEADQUARTERS
 FAR EAST COMMAND
 Office of the Engineer

Grounds Maintenance, Dust & Erosion Control Inspection Check List

Post Camp Senda Inspected by _____ Date 10 Oct 49

Post Engineer _____ Accompanied by _____ Title _____

LEGEND: X - Major Deficiencies
 O - Minor Deficiencies
 (1), (2), etc. - See Notes

War Dept. Technical Manuals
 Applicable to inspection:

ITEM	Improved Grounds	Other Post Areas	NOTES
Are W.D. T/M's readily available to interested personnel? (Yes), (No)	<u>Satisfactory</u>		
Preventive Maintenance	X		
Policing mowing hazards	X		
Rolling grassed areas	X		
Fertilizing, seeding, sodding	X		
Mowing	X		
Temporary dust control measures	NA		
Wood and poisonous plant control	NA		
Pruning and spraying trees & shrubs	X		
Fire hazard control	X		
Insect control, grassed areas	X		
Vegetated drainageways	X		
Gutters	X		
Diversion Terraces	X		
Sub-surface drains	X		
Inlets and Catch Basins	X		
Culverts and headwalls	X		
Adequacy of grounds equipment	X		
Traffic Control	X		
Cost Accounts - Propriety of Charges	X		
Personnel problems discussed with Post Engineer (Yes), (No), (None)	X		
Personnel requirements (Increase) (Decrease), (No Change)	X		

CHECK LIST RECEIVED:

E. Moore Lee
 Post Engineer

Major C.E.
 Exec Officer
 Date

10 Oct 49

Bell
 Engineer, CE, GHQ, -EAC

OFFICE OF THE ENGINEER
 GENERAL HEADQUARTERS
 FAR EAST COMMAND

INSECT AND RODENT CONTROL SURVEY REPORT

Command Camp Sendai

Date 10 Oct 49

PERSONS SENT:

ITEM	POOR	FAIR	GOOD	SUPER.	LAST	NOTE
				IOR	REPT.	
Coordination with Surgeon	:	:	X	:	:	
Utilization of Survey	:	:	X	:	:	
Adequacy of control	:	:	X	:	:	
Availability of Tech. Manual	:	:	X	:	:	
Adequacy of supervision	:	:	X	:	:	
Training of crew	:	:	X	:	:	
Adequacy of equipment & supp.	:	:	X	:	:	
Adequacy of vehicles	:	:	X	:	:	
Maintenance and repair	:	:	X	:	:	
Storage & safeguarding of poisons & spec. sup.	:	:	X	:	:	
Activity of preventive prog.	:	:	X	:	:	
Operation of waste disposal	:	:	X	:	:	
Control of disposal by PE	:	:	X	:	:	
Segregation & salvage	:	:	X	:	:	
Control of unauth. dumps	:	:	X	:	:	
Completeness & accuracy of logs and reports	:	:	X	:	:	
Accounting control	:	:	?	:	:	
Adequacy of personnel no.	:	:	X	:	:	

DISCUSSED & NOTED:

Incl 35

Incl 36

GENERAL HEADQUARTERS
 FAR EAST COMMAND
 Office of the Engineer

Roads, Runways and Railroads Inspection Check List

Post Camp. Sendai Inspected by Bell Date 10 Oct 49

Post Engineer _____ Accompanied by _____ Title _____

LEGEND: X - Major deficiencies
 O - Minor deficiencies
 (1), (2), etc. - See Notes

War Department Technical
 Manuals applicable to
 Inspections:

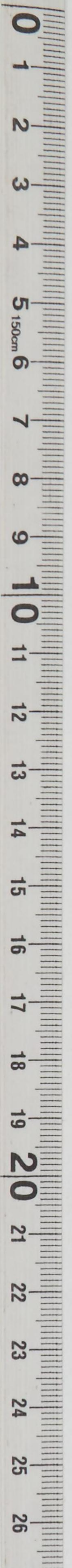
DEFICIENCIES	NOTES
Patching Roads and Sidewalks	Yes
Sealing Roads	NA
Concrete Pavement Joints	NA
Road Shoulders	Yes
Parking Areas	Yes
Drains and Ditches	Yes
R. R. Road Bed	NA
R. R. Trackage	NA
Patching (Air Fields)	NA
Sealing (Air Fields)	NA
Concrete Pav. Jts. (Air Fields)	NA
Drains and Ditches (Air Fields)	Yes
Cost Accounts - Propriety of Charges	
Personnel problems discussed with Post Engineer (Yes), (No), (None)	
Personnel requirements (Increase) , (Decrease) , (No Change)	Satisfactory

CHECK LIST RECEIVED:

Signed by Post Engineer
 Post Engineer

10 Oct 49
 Date

Bell
 Engineer, OE, CHQ, FEC



REAL ESTATE OPERATION AND UTILIZATION

Inspection Check Sheet

Date 11 Oct 49

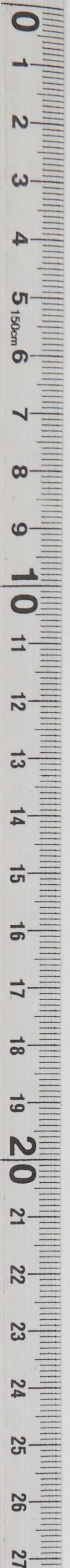
Schimmelpfennig Camp

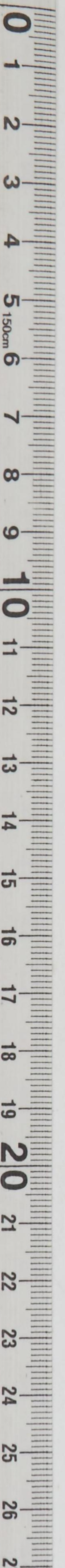
- 1. Real Estate Office _____
- 2. Name of Installation _____
- 3. Officer Responsible For Preparation of Real Property Reports _____

4. General Inspection	Good	Fair	Poor	Remarks
a. Files	_____	_____	_____	_____
(1) General Condition	_____	_____	_____	_____
(2) System	_____	_____	_____	_____
(3) Completeness	_____	_____	_____	_____
b. Maps	_____	_____	_____	_____
(1) Clear	_____	_____	_____	_____
(2) Complete (Cover All Lines)	_____	_____	_____	_____
(3) File System	_____	_____	_____	_____
c. NME Form 222	_____	_____	_____	_____
(1) Clear	_____	_____	_____	_____
(2) Complete	_____	_____	_____	_____
(3) Part "c" log up to date	_____	_____	_____	_____
d. Records on Acquisition (Give No.# Since Last Quarterly Report)	_____	_____	_____	See Over
e. Records of Disposal (Give No. Since Last Quarterly Report)	_____	_____	_____	_____
f. Check of Structures Listed in Files against Structures in Field	_____	_____	_____	_____
(1) Correct Location	_____	_____	_____	_____
(2) Correct Size	_____	_____	_____	_____
(3) Correct Description	_____	_____	_____	_____
(4) Condition	_____	_____	_____	_____

(OVER)

Incl #4





	Good	Fair	Poor	Remarks
g. Check of Structures in Field Against Structures Listed in Files				
(1) Correct Location	_____	_____	_____	_____
(2) Correct Size	_____	_____	_____	_____
(3) Correct Description	_____	_____	_____	_____
(4) Condition	_____	_____	_____	_____
h. Pd's or Leases Cover all occupancy				
i. Utilization	_____	_____	_____	_____
j. General Condition of Buildings	_____	_____	_____	_____
k. General Condition of Grounds	_____	_____	_____	_____
l. General Condition of Utilities	_____	_____	_____	_____
m. Remarks	_____	_____	_____	_____

1266 and records are complete. Some are in the process of revision caused by required corrections.

Signed CLM En. Trindal
Post Engineer

REAL ESTATE OPERATION AND UTILIZATION

Inspection Check Sheet

Date 4 Oct 49

1. Real Estate Office Post Engineer Office
2. Name of Installation Camp Crawford
3. Officer Responsible For Preparation of Real Property Reports Major Willis - Mr. Demens, WOJG

4. General Inspection	Good	Fair	Poor	Remarks
a. Files	_____	_____	_____	_____
(1) General Condition	_____	X	_____	_____
(2) System	_____	X	_____	_____
(3) Completeness	_____	_____	_____	90%
b. Maps	_____	X	_____	_____
(1) Clear	_____	_____	_____	_____
(2) Complete (Cover All Lines)	_____	_____	_____	_____
(3) File System	_____	_____	_____	_____
<i>Japanese maps being converted to American.</i>				
c. NME Form 222	_____	_____	_____	_____
(1) Clear	_____	_____	_____	_____
(2) Complete	_____	_____	_____	_____
(3) Part "c" log up to date	_____	_____	_____	_____
d. Records on Acquisition (Give No.# Since Last Quarterly Report)	_____	_____	_____	_____
e. Records of Disposal (Give No. Since Last Quarterly Report)	_____	_____	_____	_____
f. Check of Structures Listed in Files against Structures in Field	_____	_____	_____	_____
(1) Correct Location	_____	_____	_____	_____
(2) Correct Size	_____	_____	_____	_____
(3) Correct Description	_____	_____	_____	_____
(4) Condition	_____	_____	_____	_____

Del #4

	Good	Fair	Poor	Remarks
g. Check of Structures in Field Against Structures Listed in Files				
(1) Correct Location	---	---	---	---
(2) Correct Size	---	---	---	---
(3) Correct Description	---	---	---	---
(4) Condition	---	---	---	---
h. Pd's or Leases Cover all occupancy	Yes			
i. Utilization	---	---	---	---
j. General Condition of Buildings	X	---	---	---
k. General Condition of Grounds	X	---	---	---
l. General Condition of Utilities	X	---	---	---
m. Remarks	---	---	---	---

Now working on Form 1266 making corrections.

Signed /s/ DEAN W. BELL

REAL ESTATE OPERATION AND UTILIZATION

Inspection Check Sheet

Date 10 Oct 49

- 1. Real Estate Office Camp Sendai
- 2. Name of Installation _____
- 3. Officer Responsible For Preparation of Real Property Reports Form 1266 submitted 15 Sept. 49
Records reported up to date.

4. General Inspection	Good	Fair	Poor	Remarks
a. Files	_____	_____	_____	_____
(1) General Condition	_____	_____	_____	_____
(2) System	_____	_____	_____	_____
(3) Completeness	_____	_____	_____	_____
b. Maps	_____	_____	_____	_____
(1) Clear	_____	_____	_____	_____
(2) Complete (Cover All Lines)	_____	_____	_____	_____
(3) File System	_____	_____	_____	_____
c. NME Form 222	_____	_____	_____	_____
(1) Clear	_____	_____	_____	_____
(2) Complete	_____	_____	_____	_____
(3) Part "c" log up to date	_____	_____	_____	_____
d. Records on Acquisition (Give No.# Since Last Quarterly Report)	_____	_____	_____	_____
e. Records of Disposal (Give No. Since Last Quarterly Report)	_____	_____	_____	_____
f. Check of Structures Listed in Files against Structures in Field	_____	_____	_____	_____
(1) Correct Location	_____	_____	_____	_____
(2) Correct Size	_____	_____	_____	_____
(3) Correct Description	_____	_____	_____	_____
(4) Condition	_____	_____	_____	_____

Incl 4'

Incl 47

	Good	Fair	Poor	Remarks
g. Check of Structures in Field Against Structures Listed in Files				
(1) Correct Location	_____	_____	_____	_____
(2) Correct Size	_____	_____	_____	_____
(3) Correct Description	_____	_____	_____	_____
(4) Condition	_____	_____	_____	_____
h. Pd's or Leases Cover all occupancy				
i. Utilization	_____	_____	_____	_____
j. General Condition of Buildings	Good	_____	_____	_____
k. General Condition of Grounds	Good	_____	_____	_____
l. General Condition of Utilities	Good	_____	_____	_____
m. Remarks	_____	_____	_____	_____

Signed Dean W. Bell

3-3
 X 323 MARBO
 X 400.703

le

SECRET

26 October 1949

MEMORANDUM FOR: General Eberle

Subject: Report of Inspections - MARBO

1. In compliance with competent authority the following inspection of the progress of the processing and outshipment of excess supplies in MARBO was conducted by the following officers during the periods indicated:

- a. Colonel Barksdale Hamlett (P&P) 17 Oct to 21 Oct 49.
- b. Lt Col Omer S. Dews (Opns) 17 Oct to 21 Oct 49.
- c. Major Arthur L. Dean, Jr (Sup) 17 Oct to 19 Oct 49.

2. The scope of the above inspection included the perusal of records maintained in MARBO of those activities directed toward the disposition of excesses together with a visual inspection of all pertinent operations and facilities.

3. The disposal of all excess army-owned supplies and equipment in MARBO has been directed. A deadline for the identification, segregation, classification, inventory, and submission of reports to D/A for those excesses requiring D/A disposition, has been set at 31 December 1949.

4. Estimated measurement tonnages of supplies on hand in MARBO depots on 1 Oct 49 are:

QM	46,454
Engr	367,005
Ord	114,153
Sig	30,963
Cml	1,008
Med	9,690
Trans	5,500
Spec Serv	1,745

Total 576,518 M/Tons

It is assumed by MARBO that the retention level for the command is 30% of the above. Excesses in depots to be disposed of, therefore, constitute approximately 403,563 M/Ts, of which 330,000 M/Ts are Engineer supplies. Ordnance excess tonnage is primarily vehicles (4000), the majority of which are in the process of being shipped to Yokohama for Ordnance "Big-Five" processing. Ordnance and other technical services, except Engineer, will

SECRET

SECRET

complete the first step of excess disposition by 31 Dec 49, i.e. identification, segregation, classification, and inventory of all supplies in MARBO depots, as well as the reporting for disposition of known excesses at that date.

5. Engineer supplies in MARBO depots, totaling approximately 367,000 M/Ts, are further estimated by MARBO to be divided as to serviceability into:

Group A - New - serviceable	20%
Group B - Used - serviceable	24%
Group C - Unserviceable but economically repairable	42%
Group D - Unserviceable and uneconomically repairable	14%

These estimates are based entirely on experience and knowledge by engineer personnel without benefit of stock records or inventories.

6. The MARBO Engineer has completed less than 20% of his segregation program, less than 10% of his inventory program, and less than 9% of the necessary stock record cards. At this rate, and under the procedure presently being employed, more than 12 months will be required to process the engineer supplies in MARBO.

7. Engineer excesses on MARBO are being disposed of with the concurrence of CINCFE by:

- a. Transfer to the Navy and Air Force in MARBO.
- b. Shipment to other commands in FEC.
- c. Automatic return to the Z.I.
- d. Return to the Z.I. as directed by D/A.
- e. Local disposition through salvage channels.

8. a. Shipment of engineer supplies to other services in Marianas is a local arrangement now functioning.

b. Shipment of engineer supplies to other FEC commands is accomplished by submission to MARBO of Want Lists by RYCOM and Eighth Army.

c. Automatic return to the Z.I. is authorized for all FEC excess engineer supplies and equipment listed in D/A publication List of Required Items 1 June 1948. Items listed therein without asterisk are returned only if in Groups A and B (ready for issue); items listed with asterisk are returned if in Groups A, B, and C (ready for issue or economically repairable). The List of Required Items for Engineer further assists local commanders in determining what may be considered economically repairable by the following criteria:

SECRET

SECRET

- (1) If the engineer item is basically sound and is in the categories considered highly technical, such as precision instruments, photographic, or reproduction equipment, and if the estimated cost of rehabilitating the item is not in excess of 50% of the original or replacement cost, the items will be returned to the Z.I. automatically.
- (2) All other listed Engineer items, which are considered basically sound, may be returned to the Z.I. if the estimated cost of rehabilitation is not in excess of 30% of the original or replacement cost.

d. Return to the Z.I. when directed by D/A is accomplished by submission to D/A of all serviceable and/or economically repairable items which are excess to FEC and not included in the Required Items List. For this screening period, a maximum of 45 days has been authorized. If, after 45 days, D/A disposition instructions are not received, items are disposed of locally.

9. MARBO was not aware that the List of Required Items was in existence. One copy was found and its provisions will be complied with. Engineer Special purpose Vehicles, costing approximately \$500,000.00 being paper-processed for salvage, were found to be listed in the Required Items List with asterisk. These items will be processed for return to the Z.I.

10. The present method used by MARBO in filling RYCOM and Eighth Army Want Lists immediately is disrupting and a waste of time. Since the Engineer stock records are only 9% complete, it becomes necessary, in order to fill the want list items immediately, to resort to a retail-type operation after locating the item desired somewhere on Guam. This item search delays the orderly segregation and processing so vital to the disposition program and fritters away man-power potential. It is axiomatic that the MARBO engineer cannot intelligently estimate tonnages on hand nor can he furnish a recommended disposition until he determines first what is in his depot. He can make that determination only by setting up an assembly-line processing operation to classify, segregate, repack, mark, inventory, and store the items to be retained by the Army. The present procedure in MARBO to stop the segregation and processing to fill Want Lists results from MARBO's erroneous interpretation of CINCFE directives.

11. During the inspection period, a review of personnel utilization indicated that no more than 50% of the manpower potential was expended in support of excess disposition or logistical functions. A rather large percentage of man-days are consumed in administrative and housekeeping functions including operation of messes, clubs, BOQ's and grounds keeping. This problem was discussed with G-4 and the Chief of Staff. Soldier labor

SECRET

SECRET

is required in MARBO for many activities usually performed in other locales by civilian labor, which is not available on Guam. The G-4, however, has initiated a procedure of reporting which will keep the command informed where the available man-hours are being expended and what is actually being accomplished. In this connection, Engineer supply troops and officers were on 19 Oct 49 excused indefinitely from the weekly half-day training requirement, as well as from the necessity to appear in review, parades, etc. It was suggested to the G-4 that a survey be made of qualified first three graders in other services in MARBO to determine the advisability of their temporary loan to Engineer for a much needed increase in supervisory personnel.

12. It appears that a very wide disparity exists between MARBO planning and GHQ thinking, thus abrogating the proper exercise of conservation of man-power and material resources. Particularly is this true in the Engineer construction and repair programs. Projects now under construction by Engineer troops include:

- a. Dependent quarters (4 buildings)
- b. 600-man mess hall
- c. Troop barracks
- d. Renovation of NCO quarters and dispensary
- e. Landscaping

In addition, the following projects are now under construction from non-appropriated funds:

- f. Tumon Bay EM's recreational center
- g. Football field bleachers
- h. Theaters (2)
- i. Service Club
- j. Field House
- k. Post Exchange improvements.

If the 4509 troop bases is the ultimate, then these programs might be in order. If, on the other hand, the 4509 troop bases is only a way-station along the road to zero, some of the above projects might well be a sheer waste of energy, technical ability, and money.

SECRET

SECRET

13. The 9th Medium Port, operating four docks at Apra Harbor, with a pier shed capacity of 11,500 measurement tons, and with open storage area of 5 acres, is capable of handling the MARBO excesses. Its pier capacity is 75,000 M/Ts per month. Actually, the port, during 1948, handled an average of 46,000 M/Ts per month. The port when inspected, was functioning in an orderly manner. Three LST's (SCAJAP) were receiving vehicles for Yokohama. These LST's completed 11 of 16 scheduled for this project.

14. The segregation, classification, and inventorying of stocks on Saipan is complete with the exception of Engineer property. This part of the disposition of excesses on Saipan insofar as Engineer property is concerned can be completed by 31 Dec 49. Preparation of supplies for outshipment from Saipan will not be completed prior to the time army troop strength there is reduced to a caretaking establishment. Much difficulty is being encountered in current outshipments of stocks from Saipan as a result of the type of vessels being employed to lift general cargo. LST's are being dispatched to Saipan for this purpose and must be hand loaded over the beach. Liberties or similar cargo type vessels could be outloaded from available piers using material handling equipment saving many man hours and cutting down on breakage.

15. Salvage activities are approximately current. Space and facilities have been expanded to handle the impact of the engineer turn-ins. Some 3000 tons of scrap are on hand which are on Invitation to Bid for the second time without results. The items are ferrous metals and since the U. S. price is only \$12.00 per ton, they will probably not move except in company with more desirable items to be turned in by the engineer.

16. Attached as Tab A are photographs of supplies and equipment constituting the bulk of the excess disposal problem for MARBO. These photographs are advance copies of photos to accompany a special report requested by the Chief of Staff, U. S. Army, while visiting MARBO. Discussion with officers, EM, and civilians revealed that General Collins' interest was primarily concerned with determining the condition of equipment stored for long periods in open storage in the tropics. The General suggested that MARBO request D/A to send a military and civilian engineer team from the U. S. to assist in classifying engineer equipment on MARBO. Action on this matter has been initiated by CINCPAC (G-4). The purpose implied was to return the useful items to the U. S. economy.

17. In view of the above, it is concluded that:

a. The first step is the segregation, classification, and inventorying of excesses. This phase can be completed except for Engineer supplies by 31 Dec 49. Outshipment, except engineer, can be completed by March 1950.

SECRET

SECRET

b. Engineer first step in disposition of excesses can be completed by 31 March 50. Step two (outshipment) can be completed by 30 June 50.

c. The present method of expediting the handling of Want Lists is wasteful.

d. FEC screening of MARBO excesses, other than items submitted on Want Lists, will only delay disposition of excesses and will not materially assist other FEC commands.

e. At this date MARBO has no organized program in operation to segregate, classify, repack, mark, and inventory engineer supplies on assembly-line methods.

f. Man-power utilization is not sufficiently effective to perform the assigned missions in a manner advantageous to the NME.

g. Consideration should be given to preparation for shipment of all excess supplies on Saipan prior to reducing army personnel to a caretaking establishment.

h. Supplies on Saipan classified as general cargo should be unloaded from Saipan, in general cargo vessels, or lightered to Guam for unloading these.

18. The above conclusions are based on the assumption that Engineer excesses will be processed with a view toward maximum recovery of these items required for future use.

19. It is recommended that:

320 a. The RYCOM and Eighth Army Want Lists be filled by MARBO when the items required become available for outshipping in the normal course of supply processing, and that immediate action be not required.

? b. CG MARBO and the Engineer FEC be informed that except for items listed on Want Lists from RYCOM and Eighth Army, additional FEC screening of excesses will be discontinued.

✓ c. MARBO established an orderly equipment processing procedure to determine the condition classification and complete the processing of all Engineer supplies in MARBO depots.

✓ d. The man-power utilization in MARBO be reviewed critically to assure a maximum utilization of personnel and facilities at the expense, if necessary, of certain non-essential housekeeping and personal comfort activities.

SECRET

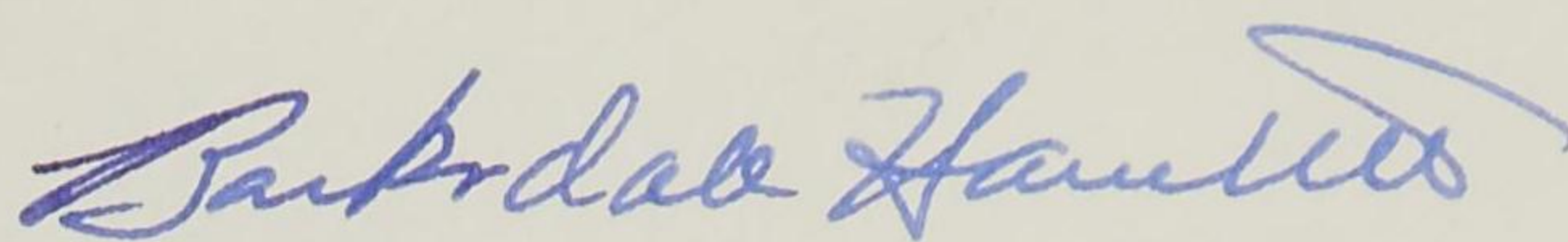
SECRET

e. Excess supplies on Saipan be outshipped prior to the time that army personnel are reduced to a caretaking status.

f. General cargo on Saipan be outloaded in general cargo ships or lightered to Guam for outloading.

g. In view of the apparent misunderstanding of current directives, it is recommended that the proposed letter, attached as Tab B be approved for dispatch to CG MARBO.

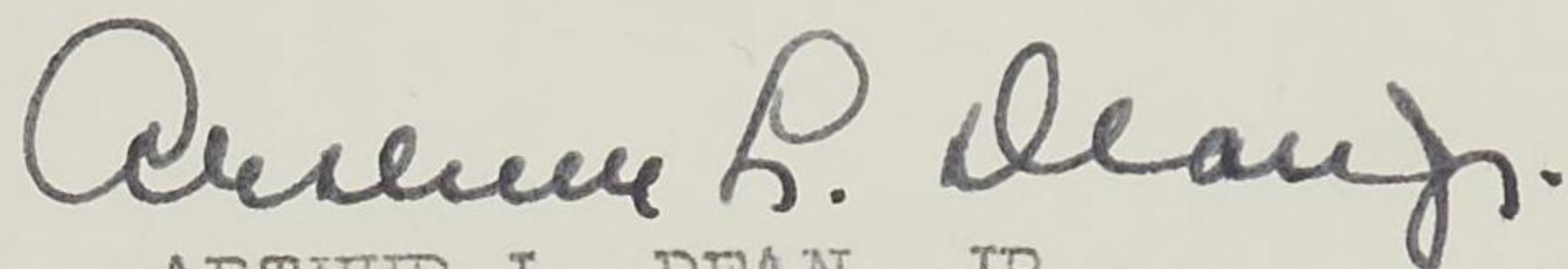
2 Incls
Tabs A and B



BARKSDALE HAMLETT
Col GSC

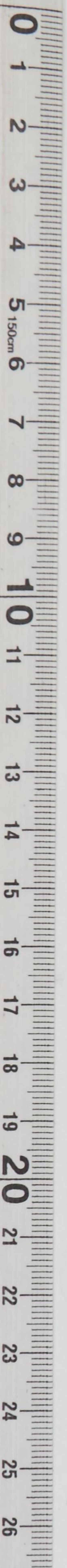


OMER S. DEWS
Lt Col QMC



ARTHUR L. DEAN, JR.
Maj GSC

SECRET



G-4 ROUTING	
A C/S G-4	
D AC/S G-4	
EXECUTIVE	
PLANS & POLICY	
OPERATIONS	
CONST & FAC	
TRANSPORTATION	
SUPPLY	
PETROLEUM	
BUDGET	
PERSONNEL	
ADMINISTRATION	

2 ~~333~~ ~~337~~ ~~4452~~
333
4452

DA Inspection Team Query

G-4

14 OCT 1949

1

1. The attached list of questions was referred to G-3, GHQ, by the Department of the Army Inspection Team now visiting the Far East Command.

2. Request that answers to said questions contained in pars 3 and 4 (Incl #1) be furnished G-3, GHQ, prior to 1 November 1949. G-3 is preparing answers to questions in pars 1 and 2.

1 Incl
List of DA Questions

----- W. H. M. -----

2

From: G-4

To: G-3

Maj Kreutzer 26-6456/elh

Date:

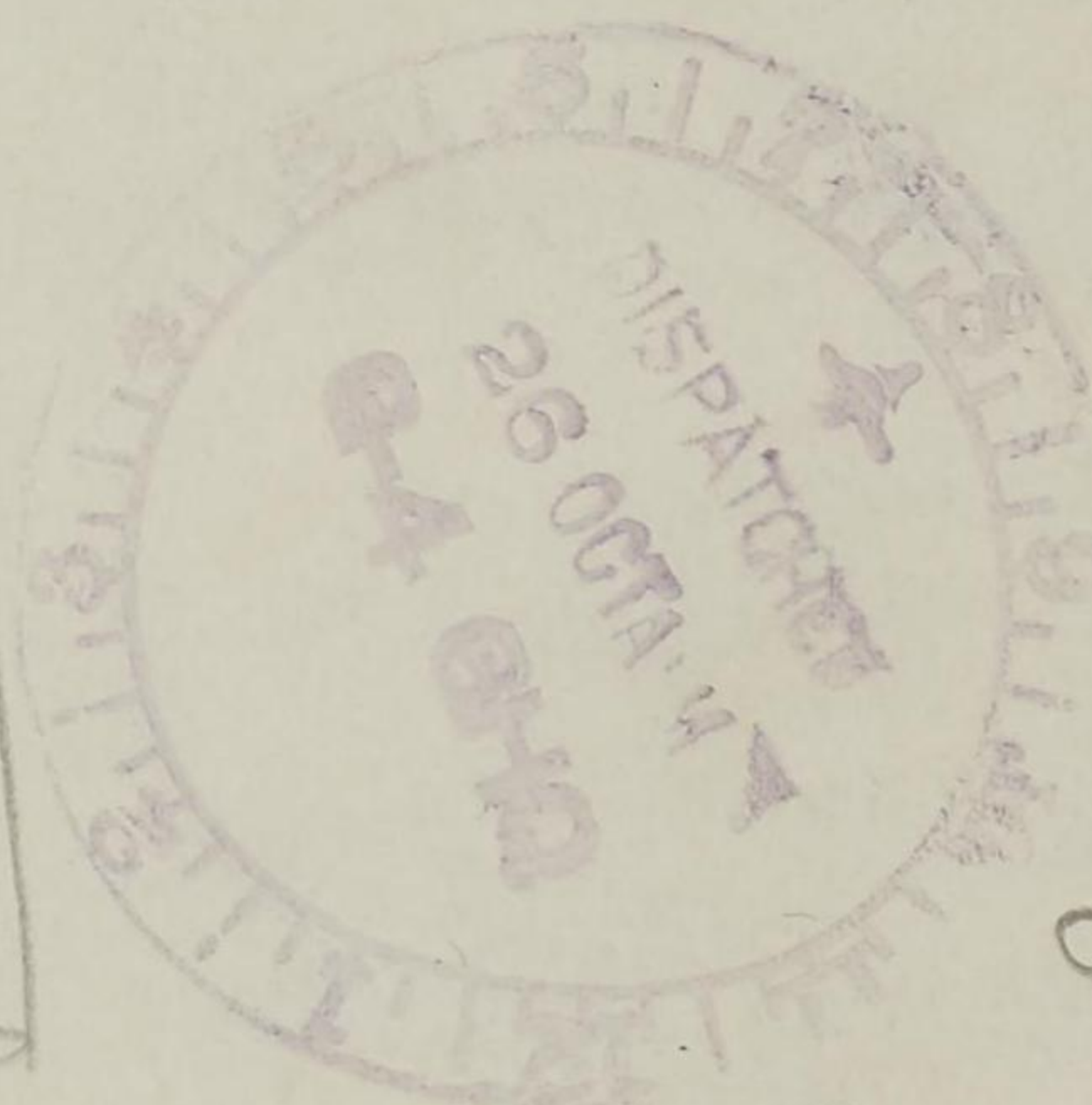
26 OCT 1949

Attached are the answers, question for question, to queries contained in paragraphs 3 and 4 of the Dept of Army Team query (Incl #1) as requested by G-3 in Checknote 1.

2 Incls
Added 1 Incl
2. Answers to Questions

----- G. L. E. -----

See file 600.1
file dated 14 Oct 49



Supr
91142

G4 File

DECLASSIFIED

Authority NND 975029

MEMO FOR RECORD:

25 Oct 49 GD SP RBK:elh

1. C/N 1, G-3 to G-4, subj as above, 14 Oct 49, requested that G-4 obtain the answers to the questions contained in paras 3 and 4 of Incl #1 to C/N 1 (Supply & Maint of Army Light Aircraft), and that the answers be furnished to G-3 prior to 1 Nov 49.

2. A conference was held at GHQ on Monday, 24 Oct 49, attended by the following representatives:

Ordnance, 8A (Lt Col Hill)
Ordnance, GHQ (Maj Higgins)
G-3, GHQ (Maj Proer)
FEAF, Mat Sup (Maj Dugan)
G-3, 8A (Maj Neumann)

G-4, 8A (CWO Johnson)
FEAMCOM, Mat Div (Lt Col Dixon)
FEAF, Armament (Col Kane)
FEAF, Maint (Lt Ridgeway)

The questions were discussed and answers prepared. The answers as written are self-explanatory.

3. Necessary G-4 action is to submit answers to questions requested by G-3 by C/N. Instant C/N accomplishes this.

4. No further G-4 action required. Action complete on G-4 Journal No. 91142.

RBK RBK 26-6456

ELT ELT

EHM EHM (Div Ch)

G 4 File

Answers to Queries

re

Army Light Aircraft - DA Inspection Team

3. Maintenance.

a. Organizational.

- (1) The T/O&E and T/A equipment and personnel for performance of organizational maintenance in the FEC is adequate. (This includes divisional units operating under the 7N series, and the corps and Army units operating under TA 20-130.)
- (2) Standards as prescribed in current technical publications for 747 mechanics are adequate. Qualities and qualifications of 747 mechanics in the FEC are considered to be satisfactory.

b. Field.

- (1) Field maintenance support as now provided by FEAF is adequate. FEAF plans to continue to support the Army until relieved by the Army as per JAAFAR 4-11-2, 16 May 49 (target date: 30 June 50). It is considered feasible for FEAF to perform mobile maintenance in an emergency. The recommended method would be for FEAF to supply the aircraft technical specialists and equipment as required in T/O&E 9-148 to Eighth Army. Eighth Army to be responsible for organization, administration and employment of personnel and equipment.
- (2) The T/O&E for the Ordnance Light Aviation Maintenance Company is considered to be adequate. As presently organized and equipped, the company can perform the mission for which it was designed; and, in addition, can accomplish the mission of field maintenance support in the FEC.
- (3) It is not considered feasible in the FEC to efficiently perform the required maintenance if the company strength is reduced below that contained in the reduction table of T/O&E 9-148. It is considered possible and practicable to employ the company in the FEC on the peace-time reduction table applied from the 150 to 100 plan support mission.

- (4) The AF provided field maintenance for Army units since the beginning of the occupation. This practice is the result of the non-availability by the Army of the necessary trained and equipped personnel to do the job. The present method of obtaining field maintenance support for Army aircraft is for the Army to submit a request to the nearest AF base.
- (5) In order to properly discharge the mission assigned to Eighth Army, it is considered necessary that this company arrive at the earliest possible date.

4. Supply.

a. Organizational.

- (1) Concur in the Office, Chief of Ordnance proposal for the use of the equivalent of Ordnance 7 for aircraft.

b. Station.

- (1) A sixty (60) day level is considered to be adequate in the FEC, in view of FEAF's present 150 day depot level. Concur with the proposal to use Supply Table II as a guide for initial establishment of levels.

c. Depot.

- (1) Adequate levels have been established by FEANGCOM to include support of Army aircraft, and will be stocked to meet the established levels to the extent available from the ZI. Based on a five month depot supply level, at least 100% of re-supply will be necessary for all types of aircraft for the remaining eight months in FY 50. Supply of spare parts for L-17 is critical at present.
- (2) FEAF has plans to provide levels to support depot maintenance of Army aircraft. There are no Army balances in FEC of spares for the subject aircraft. Requisitions are submitted by the Army to AF, where they are annotated and processed through AF channels. The source of supply or method of reimbursement is not known by this command.

333

CROSS REFERENCES OTHER THAN RADIO

DATE 25 Oct 49

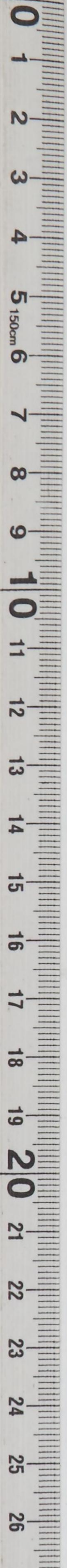
FROM: QM

TO: C/S thru A C/S - G-4

SUBJECT: C/N #1 - Report of Staff Visit to 24th Inf Div and
Eta Jima School Command

DOCUMENT IN..... 337 Visits

Jo.No. 91913



333

CROSS REFERENCES OTHER THAN RADIO

DATE 25 OCT 49

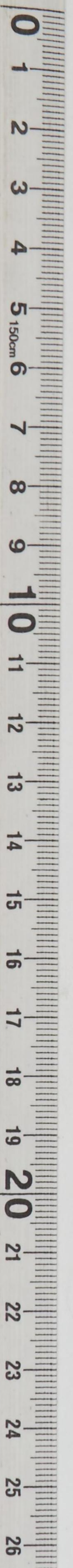
FROM: CINCFE GD

TO: FEAF

SUBJECT: MSGFM Report of supplemental investigation of fire
Misawa AFB

600/97
DOCUMENT IN.....

3330



RESTRICTED

[Handwritten signature]
GD TR HLC/JRD/JET/aid

~~333~~
~~333~~
~~333~~
G-4

Technical Inspection of GHQ Motor Pools
20-25 June 1949

Major Tilton 26-6052

25 OCT 1949

1. a. Reference is made to paragraph 1d of attached letter from Headquarters, Hq & Sv Gp, 10 Oct 49, subject: Technical Inspection of GHQ Motor Pools, 20-25 June 1949.*
- b. Chief of Staff has approved the recommendation of the CG, Hq & Sv Gp, that the TIAE Motor Pool be closed.
2. G-4 understands that the CCD is expected to be deactivated within the next month. With this deactivation, it appears that the existing four (4) motor pools may efficiently be consolidated into one centralized motor pool.
3. Request your comments and/or recommendations.

1 Incl
Ltr fr Hq & Sv Gp.
10 Oct 49

(E)

G.L.E.

90976

G-4 ROUTING	
A C/S G-4	_____
D AC/S G-4	_____
EXECUTIVE	_____
PLANS & POLICY	_____
OPERATIONS	_____
CONST & FAC	_____
TRANSPORTATION	_____
SUPPLY	_____
PETROLEUM	_____
BUDGET	_____
PERSONNEL	_____
ADMINISTRATION	_____ <i>21</i>

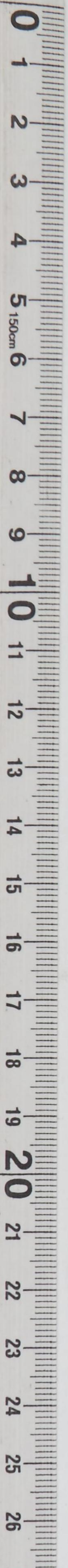
DISPATCHED
25 OCT PM 1
G-4 GHQ

Kross

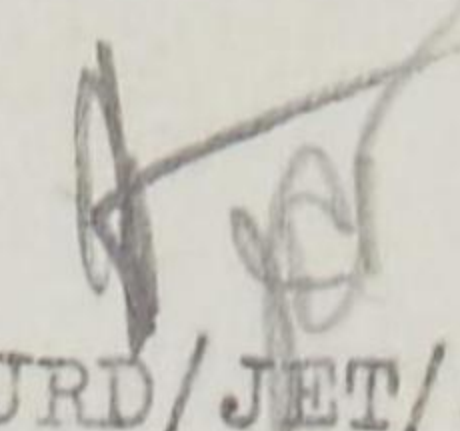
90976

RESTRICTED

G-4



RESTRICTED


 GD TR HLC/JRD/JET/aid
 24 Oct 49

MEMO FOR RECORD:

1. Basic was ltr from Hq, Hq & Sv Gp, GHQ FEC, to CINCFE, Attn G-4, HC 451 (HSD), subj: Technical Inspection of GHQ Motor Pools 20-25 June 1949, 10 Oct 1949.

2. Basic ltr stated that all of the deficiencies listed in ltr, GHQ, FEC, AG 333.1 (14 Jul 49) GD, same subject as basic ltr, which were the report of a technical inspection, have been corrected. In addition, Hq Comdt concurred with the recommendation calling for the dispatch of vehicles from the PVP for recreational uses by personnel assigned, attached, or on temporary duty, with GHQ, with the exception of certain G-2 personnel who, because of the nature of their mission have been authorized the use of a number of other vehicles for other than official use.

3. Hq Comdt recommended:

a. That TI&E Motor Pool be closed and their requirements met by Mtr Bn, Hq & Sv Gp.

b. That CCD and TIS motor pools be consolidated, and ASAPAC & TID be consolidated.

~~4. G-4 did not concur in the recommendations listed in b and e above,~~
 Inasmuch as information was obtained that the CCD ~~is~~ is expected to be deactivated on or about 15 Nov 49, ~~so a checknote was prepared,~~ G-4 to G-2, suggesting that with the deactivation of the above listed unit it appeared possible that the existing 4 motor pools could be efficiently consolidated into one centralized motor pool.

5. Instant proposed checknote to G-2 is self-explanatory.

6. Within established policy.

7. Interests of RYCOM not affected.

8. Completes action on G-4 Jo No 90976.

JET  26-6052

JRD  26-6046

HLC  26-6046

RESTRICTED

HEADQUARTERS
 HEADQUARTERS AND SERVICE GROUP
 GENERAL HEADQUARTERS, FAR EAST COMMAND
 APO 500

10 OCT 1949

HC 451 (HSD)

SUBJECT: Technical Inspection of GHQ Motor Pools 20-25 June 1949

TO: Commander-in-Chief, Far East Command, APO 500
 Attention: G-4

1. Reference letter General Headquarters, Far East Command, APO 500, file AG 333.1 (14 Jul 49)GD, subject as above, the following report and recommendations are submitted:

a. All of the deficiencies listed on the attached technical inspection report have been corrected.

b. This headquarters concurs in recommendation of dispatching vehicles only from the Personnel Vehicle Pool for recreational use by personnel assigned to, attached to, or on temporary duty with General Headquarters, Supreme Commander for the Allied Powers and Far East Command, except: Personnel of 441st CIC, TIS, TID and ASA, who because of the nature of their missions, have been authorized the use of a number of vehicles for other than official use in accordance with message ZX 22147, General Headquarters, Far East Command, dated 11 September 1949. To require the four latter units, all having motor pools, to use Personnel Vehicle Pool for recreational purposes would possibly lead to a duplication of vehicle usage and place a burden on the Motor Battalion which could not be carried without additional personnel.

c. Due to improved maintenance of vehicles and perfecting of organization within the Motor Battalion and Ordnance Maintenance Shop, the following reduction in number of vehicles has been effected:

May	1949	-	50	1/4	tons	turned in
October	1949	-	50	1/4	tons	turned in
October	1949	-	<u>25</u>		Sedans	turned in
Total			125			

A number of the above mentioned vehicles will be placed in good condition and held in the 10% Replacement Pool of this headquarters.

BASIC: Ltr fr Hq, Hq & Sv Gp, GHQ, FEC, MC 451 (HSD), October 49,
 "Technical Inspection of GHQ Motor Pools 20-25 June 1949" (Cont'd)

d. It is recommended that action indicated below be taken with reference to motor pools not maintained and/or operated under the full responsibility of this headquarters:

- (1) Close the TI&E shops and pool. Transfer its vehicles to the Motor Battalion and have the transportation requirements of TI&E furnished with drivers on dispatch basis. It is estimated that this will effect a saving of thirty-six (36) vehicles. A separate recommendation on this subject has been submitted to G-4, General Headquarters, Far East Command.
- (2) A consolidation of the CCD and TIS motor pools would result in the elimination of the need for a large proportion of the following vehicles:

45	-	1/4 tons
3	-	1/4 tons trailers
3	-	Sedans
3	-	3/4 ton W/C
5	-	1- $\frac{1}{2}$ ton
<u>4</u>	-	2- $\frac{1}{2}$ ton

Total 63

- (3) Consolidate the pool and shops of ASAPAC with those of TID. Thus will eliminate eight (8) vehicles (See Incl #1 & #2).

2. If these recommendations are approved, it will effect the elimination of three (3) motor pools, three (3) organizational maintenance shops, and approximately one-hundred-seven (107) vehicles.

FOR THE COMMANDING GENERAL:

A. L. HAYNES
 CWO, U. S. A.
 Asst. Adj.

- 2 Incls
1. TID Motor Pool Survey
 2. ASA Motor Pool Survey

~~210.453~~

333

~~411.1~~

CROSS REFERENCES OTHER THAN RADIO

DATE 21 Oct 49

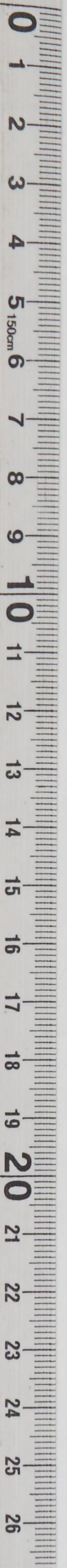
FROM: Engr

TO: C/S
Thru: G-4

SUBJECT: C/N #1 Request for Approval of Temporary Duty

DOCUMENT IN..... 531

J.N. 91489



6-4	UTING
A C/S G-4	
D AC/S G-4	
EXECUTIVE	
PLANS & POLICY	
OPERATIONS	
CONST & FAC	
TRANSPORTATION	
SUPPLY	<u>END</u>
PETROLEUM	
BUDGET	
G-4	
PERSONNEL	

Major E. J. Mohen, 26-6432

333
2314
X 2314

Report of Physical Inspection of RYCOM Messes and Unit Requisitioning Procedures

Chief of Staff

19 OCT 1949

(1) 2 (2) 1. Chief of Staff, in Checknote to G-4, 4 October 49 (TAB A), directed that G-4 take necessary follow-up action on certain mess supply matters in RYCOM to include physical inspection of appropriate RYCOM messes and unit requisitioning procedures during October 49, and to furnish a report to C/S prior to 1 November 49 on action taken, status of mess supplies, condition of equipment, degree of supply discipline in effect and recommendations for further action.

2. Background: Chief, OSD, SFPE (Col Malin) inspected several RYCOM messes approximately 28 September 49 and in message R 04151, 1 October 49 (TAB B), dispatched from RYCOM by Col Malin, addressed to D/A and info CG SFPE and CINCPAC, in part, mentioned certain recommendations made to CG RYCOM by Col Malin. One recommendation was that vigorous command action be taken by all echelons in order to insure supply discipline, and to insure that company and detachment commanders know requisitioning procedures and initiate work orders for repair of mess equipment by Post Engineer. Further recommendation was made that the necessary follow-up action be taken to make certain that the messes are properly and adequately supplied and maintained.

3. A G-4 representative (Maj Mohen) and a QM representative (Maj Frampton) visited RYCOM during period 12 - 15 October and physically inspected RYCOM messes and unit requisitioning procedures. The principal persons and units contacted are listed in inclosure attached (TAB C).

4. Observations:

a. Subsequent to Col Malin's visit, units uniformly initiated proper requisitioning action and either had requisitions filled or had depot notice as to availability and estimated delivery date.

b. Units were actively taking follow-up action on shortages and unfilled requisitions.

c. Evidence of command action supervising supply discipline was noted.

d. Post Engineers were accepting verbal requests from units on emergency work orders on mess equipment. The Post Engineer reported that the engineer parts support was presently defective due to incompleteness of physical survey now underway on types of equipment in hands of units.

e. Prior to Col Malin's inspection, the QM Depot had not been properly informed of units' requirements. QM Depot has received an influx



G 4 File



91392

Supply
G 4 File

Major E. J. Mohen, 26-4132

Report of Physical Inspection of RYCOM Messes
and Unit Requisitioning Procedures

G-4

Chief of Staff

1)
cont'd

of large volume orders recently after mess inspections which probably will result in a temporary out-of-stock condition and necessitate restocking. However, port has agreed to ship mess requisitions on first available transportation.

5. Conclusion:

a. Aggressive action is now being taken by all echelons in RYCOM to improve the mess supply position.

b. Although the time is short since Col Malin's inspection, the status of mess supplies has improved considerably.

c. The Post Engineer is furnishing close support to improve the condition of mess equipment. The completion of the physical survey now underway of types of equipment in hands of units should materially aid the engineer parts support mission.

d. The program for supply discipline now in effect in RYCOM is illustrated by:

(1) Text of message now being imprinted and to be distributed to all RYCOM officers and all incoming officers by CG RYCOM (TAB D);

(2) RYCOM command letter to major RYCOM units now being prepared for dispatch (TAB E), which requires monthly command inspection of all messes and report on same;

(3) Schedule of unit classes in supply discipline in one RYCOM unit (TAB F).

6. The following recommendations were presented informally to A C/S, G-4, RYCOM on 14 October 49, who advised that immediate action would be taken and that the Asst G-4 would monitor all phases discussed.

a. That RYCOM Post Engineer publish SOP for units covering unit preventive maintenance requirements, processing work orders and obtaining repairs to mess equipment, and disposition instructions on inoperable, un-repairable equipment.

b. That the physical survey of types of mess equipment in hands of units be expedited.

Report of Physical Inspection of RYCOM Messes
and Unit Requisitioning Procedures

G-4

Chief of Staff

1)
ont'd

c. That schools in supply discipline be uniformly established in all RYCOM units similar to that now established in one RYCOM unit.

7. Since, as evidenced by foregoing tabs (D, E and F), aggressive action is being taken by CG RYCOM to correct conditions noted in Col Malin's report and to enforce supply discipline in RYCOM, it is recommended that no further action be taken at this time but that subsequent staff visits by QM and Engineer include these matters for observation.

6 Incls (To addressee only)

- 1. C/S C/N, 4 Oct (TAB A)
- 2. Msg R 04151, 1 Oct 49 (TAB B)
- 3. List of RYCOM pers contacted (TAB C)
- 4. Text of prpsd RYCOM msg (TAB D)
- 5. Proposed RYCOM ltr (TAB E)
- 6. Schedule classes in Sup Discipline (TAB F)

G.L.E.

D R A F T

CHECKNOTE

Maj Mohen 26-6432/elh

Subj: Report of Physical Inspection of
RYCOM Messes and Unit Requisitioning
Procedures

1 From: G-4 To: Chief of Staff Date:

1. Chief of Staff, in Checknote to G-4, 4 October 49 (TAB A), directed that G-4 take necessary follow-up action on certain mess supply matters in RYCOM to include physical inspection of appropriate RYCOM messes and unit requisitioning procedures during October 49, and to furnish a report to C/S prior to 1 November 49 on action taken, status of mess supplies, condition of equipment, degree of supply discipline in effect and recommendations for further action.

2. Background:- Chief, OSD, SFPE (Col Malin) inspected several RYCOM messes approximately 28 September 49 and in msg R 04151, 1 October 49 (TAB B), dispatched from RYCOM by Col Malin, addressed to DA and info CG SFPE and CINCFE, in part, mentioned certain recommendations made to CG RYCOM by Col Malin. One recommendation was that vigorous command action be taken by all echelons in order to insure supply discipline, and to insure that company and detachment commanders know requisitioning procedures and initiate work orders for repair of mess equipment by Post Engineer. Further recommendation was made that the necessary follow-up action be taken to make certain that the messes are properly and adequately supplied and maintained.

3. A G-4 representative (Maj Mohen) and a QM representative (Maj Frampton) visited RYCOM during period 12 - 15 October and physically inspected RYCOM messes and unit requisitioning procedures. The principal persons and units contacted are listed in inclosure attached (TAB C).

D R A F T

D R A F T

C/N 1 to C/S (Cont'd)

4. Observations:

- a. Subsequent to Col Malin's visit, units uniformly initiated proper requisitioning action and either had requisitions filled or had depot notice as to availability and estimated delivery date.
- b. Units were actively taking follow-up action on shortages and unfilled requisitions.
- c. Evidence of echelon command action supervising supply discipline was noted.
- d. Post Engineers were accepting verbal requests from units on emergency work orders on mess equipment. The Post Engineer reported that the engineer parts support was presently defective due to incompleteness of physical survey now underway on types of equipment in hands of units.
- e. Prior to Col Malin's inspection, the QM Depot had not been properly informed of units' requirements. QM Depot has received an influx of large volume orders recently after mess inspections which probably will result in a temporary out-of-stock condition and necessitate restocking. However, port has agreed to ship mess requisitions on first available transportation.

5. Conclusions:

- a. Aggressive action is now being taken by all echelons in RYCOM to improve the mess supply position.
- b. Although the time is short since Col Malin's inspection, the status of mess supplies has improved considerably.
- c. The Post Engineer is furnishing close support to improve the condition of mess equipment. The completion of the physical survey now underway of types of equipment in hands of units should materially aid the engineer parts support mission.

D R A F T

C/N 1 to C/S (Cont'd)

d. The program for supply discipline now in effect in RYCOM is illustrated by:

- (1) text of msg now being imprinted and to be distributed to all RYCOM officers and all incoming officers by CG RYCOM (TAB D);
- (2) RYCOM command letter to major RYCOM units now being prepared for dispatch (TAB E), which requires monthly command inspection of all messes and report on same;
- (3) schedule of unit classes in supply discipline in one RYCOM unit (TAB F).

6. The following recommendations were presented informally to A C/S, G-4, RYCOM on 14 October 49, *who advised that immediate action would be taken*

AND ~~agreement~~ of the ASST G-4 to MONITOR ALL phases discussed that the
a. That RYCOM Post Engineer publish SOP for units covering unit preventive maintenance requirements, processing work orders and obtaining repairs to mess equipment, and disposition instructions on inoperable, unrepairable equipment.

b. That the physical survey of types of mess equipment in hands of units be expedited.

c. That schools in supply discipline be uniformly established in all RYCOM units similar to that now established in one RYCOM unit.

7. Since, as evidenced by foregoing tabs (D, E, and F), aggressive action is being taken by CG RYCOM to correct conditions noted in Col Malin's report and to enforce supply discipline in RYCOM, it is recommended that no further action be taken at this time but that subsequent staff visits by QM and Engr include these matters for observation.

*2 Incls
ABC PE*

G-4 DRAFT	APP'D BY <i>WJB</i> 10/18/49
FOR FORMAL CONCURRENCE AND <i>for</i>	G. L. E. <i>✓</i>
3	<i>Submission to G-4 for dispatch by DIV.</i>
	D R A F T

3rd BATTALION SUPPLY OFFICE
29th Infantry Regiment
APO 331

22 Sept. 1949

REFERENCE : R.S.O. Memorandum DTD 19 September 1949.

TO : R.S.O. Capt. E. T. Jones

1. In reference to memorandum dtd 19 Sept. 1949, the following supply schedule is submitted.

2. Place of instructions will be at supply office 3rd Bn.

Sept. 30	1500-1700	Class and kinds of supply REF: FS 10-95 (5 class of supply) TF 10-12 (Gas and oil supply) Lecture and Conference.
Oct. 4	1500-1700	Preparation of supply forms, and supply procedure. REF: TM 38-403 AR 35-6520 AR 35-6640 TM 14-903
Oct. 5	1100-1200	Property book and it's entries. REF: 20-40-4
Oct. 7	1500-1700	Care and conservation of clothing and equipage. REF: The late company "B" conservation of C & E (MISC 1113) FB 171 (salvage) EFS 172 (do you know your typewriter)
Oct. 10	1500-1700-	Individual clothing and monetary allowance. REF ; Supply letter # 9 SR 32-20-1, 2 & 3
Oct. 14	1600-1700	Supply problems in South Pacific REF; FB 127
Oct. 17	1500-1700	Discussion and critique REF; True Glory (MISC 1211 Appointment Tokyo

J. W. MARRA
J. MARRA
2nd Lt. Inf.
3rd Bn. 9-4

HEADQUARTERS
RYUKYUS COMMAND
APO 331

AID 333

13 October 1949

SUBJECT: Inspection of Troop Messes

TO: See Distribution

Commanders of Major Units will forward to this headquarters by the 10th of each month a report that during the preceding month the following action has been taken:

- a. That all messes under their jurisdiction have been inspected by them.
- b. That all authorized equipment is on hand or has been requisitioned.
- c. That aggressive action has been taken to reduce loss and breakage of kitchen and mess hall equipment.

BY COMMAND OF MAJOR GENERAL SHEETZ:

ROBERT F. SINK
Colonel GSC
Chief of Staff

DISTRIBUTION E

14 October 1949
Memo has been sent
and I believe that this
or a similar directive
will be signed and
issued 15 October 1949
Austin O. Smith
Col 980
ACofS G-7 RYCOM

333
~~442~~

GENERAL HEADQUARTERS
 FAR EAST COMMAND
 APO 500

AG 333 (18 OCT 49) SC-SS

SUBJECT: Inspection Procedures, Far East Command Signal Corps Depot
 Stock Reclassification and Reconditioning Program

G-4 ROUTING	
A C/S G-4	_____
D AC/S G-4	_____
EXECUTIVE	_____
PLANS & POLICY	_____
OPERATIONS	_____
CONST & FAC	_____
TRANSPORTATION	_____
SUPPLY	_____
PETROLEUM	_____
PERSONNEL	_____
ADMINISTRATION	_____

18 OCT 49

TO: Commanding General, Eighth Army, APO 343
 Commanding General, Marianas-Bonins Command, APC 246
 Commanding General, Ryukyus Command, APO 331

1. Objective: To establish inspection procedures to be used in the Far East Command Signal Corps Depot Stock Reclassification and Rehabilitation Program.

2. Inspection Procedures:

a. Spot check inspection will be applied as follows to items listed in Appendix "A":

- (1) Samples will be selected at random.
- (2) For quantities of 25 or less, take a sample of one.
- (3) For quantities of more than 25, but less than 100, take a sample of five percent.
- (4) For quantities of more than 100, take a sample of three percent.
- (5) Where any defects are found during the spot check inspection, enough additional samples will be selected by inspection personnel to be indicative of the condition of the lot. If it is found that serviceability of the lot cannot be fairly determined by spot check method, then further inspection will be performed in accordance with the provisions of Appendix "B", "Sampling Plan for Depot Inspection".

b. Except as noted in paragraph 2c below items which are not listed in Appendix "A", "List of Items Which Can Be Inspected On The Basis of Spot Check Inspection", will be inspected in accordance with the provisions of Appendix "B", "Sampling Plan for Depot Inspection".

AG 333 (18 OCT 49) SC-SS 18 OCT 49

Subj, Inspection Procedures, Far East Command Signal Corps Depot Stock
Reclassification and Reconditioning Program

c. Exceptions to paragraph 2b.

- (1) The spot check inspection system will be used for classifying all items (other than batteries, photo film and paper) known to have been shipped within the past two years to their present location from zone of interior supply sources and not stored for extended periods in the open.
- (2) One hundred percent inspection will be required on all items where evidence of prolonged open storage, physical damage, corrosion or other types of deterioration is present.

d. Definitions:

- (1) Major Defect - defect which will usually result in equipment failing to function as intended, that is of a nature as to render the equipment inoperative or to seriously affect its life or serviceability. One or more major defects must always be considered cause for rejection. Such defects must be corrected before the reclassification symbol is applied.
- (2) Minor Defect - defect which will affect the operating efficiency to a limited extent, but will not cause the equipment to be inoperative or seriously affect its life. Defects requiring minor repairs or adjustments which can be readily performed by organizational maintenance. These minor repairs should be of the type possible with tools and parts already in the hands of the using organizations. Minor defects will not be considered of sufficient importance to reject a unit.

e. Specific Requirements:

- (1) Technical literature:
 - (a) In the performance of inspection, the following technical literature will be utilized:
 1. The repair specification on the item when such has been issued.
 2. Repair specification number 72-135, 29

AG 333 (18 OCT 49) SC-SS 18 OCT 49
Subj. Inspection Procedures, Far East Command Signal Corps Depot Stock
Reclassification and Reconditioning Program.

- November 1946, subject: "General Requirements for Repair Signal Equipment", as general reference for visual and mechanical requirements.
- 3. Applicable Technical Manuals and Technical Bulletin.
- 4. Parts Control Lists (SIG 11-1), June 1947, Change Number 1, March 1948, and later Procurement and Issue Control Lists.

(2) Technical Inspection.

(a) Visual check will be made to insure:

- 1. Absence of physical damage or deterioration.
- 2. Proper agreement between markings and contents with respect to stock number identification.
- 3. Correct count.

(3) Moisture Fungusproof Treatment.

Moisture fungusproof treatment of equipment will not be required for acceptance of materiel under the reclassification program. This does not preclude moisture fungusproof treatment normally accomplished during repair operations.

(4) Combat Serviceability Standards.

A combat serviceable item is a piece of equipment or material that presents a reasonably good appearance, is sufficiently complete to become operable and is electrically and mechanically equivalent to new equipment in operating characteristics within the limits that would be expected of equipment when operating in the field. Such minor defects as marred finish, slight corrosion, on non-critical surfaces or parts, slightly dented or bent panels or brackets, inoperative tubes, or slight misalignment shall not be cause for rejection of an item. Specific standards for the guidance of inspection personnel are included as Appendix "C" and "D".

AG 333 (18 OCT 49) SC-SS 18 OCT 49
Subj, Inspection Procedures, Far East Command Signal Corps Depot Stock
Reclassification and Reconditioning Program.

(5) Procurement and Issue Control List Completion.

The absence of any "Required" Column items necessary for operation of the equipment will be cause for rejection. The absence of any items listed in the "Running Spares" Column, or of any item in the "Required" Column needed strictly for maintenance purposes, however, will not be cause for rejection. Further, where any required items are not present as separate items, but are incorporated in the basic unit, such will be considered as present within the meaning and requisites of the "Required" Column. In the case of tool or maintenance equipments, minor items not necessary for the basic fulfillment of the essential function for which the tool or maintenance equipment is designed may be waived at the discretion of the depot commander even though they are listed in the "Required" Column.

(6) Packaging, Packing and Marking.

- (a) Packaging and packing of all items undergoing inspection or repair, which will be placed in depot stock for an indefinite storage period, will be in accordance with Joint Army-Navy Packaging and Packing Specifications and Signal Corps Pack Manual. All materiel packaged in this manner will be marked "LTS" in one inch letters below the reclassification symbol. This will constitute the designator for limited storage packaging.
- (b) Items undergoing inspection or repair which are required for issue within ninety (90) days will be packaged with a waterproof barrier in lieu of preservative compounds, desiccants and water vaporproof barriers. All materiel packaged in this manner will be marked "LIMITED STORAGE" in one-half inch letters below the reclassification symbol. This will constitute the designator for limited storage packaging.
- (c) Markings of unit or intermediate containers will be as specified by Signal Corps Marking Instruction 726-15.