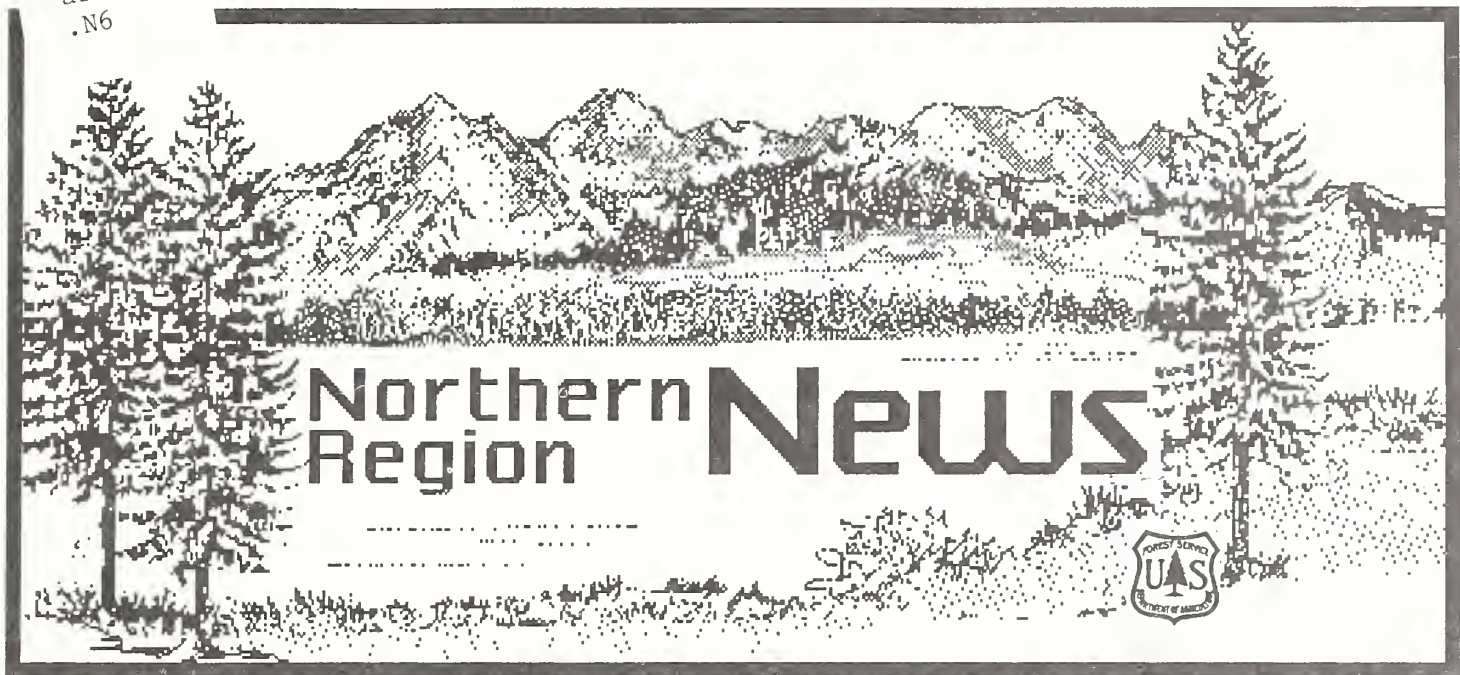


Historic, Archive Document

Do not assume content reflects current scientific knowledge, policies, or practices.



Issue #13

December 20, 1988

Fire Season 1988

The Northern Region's 1988 fire season began in February with a fire near Whitehall, Montana, and lasted until November, when snow finally fell quenching the last stubborn embers of some of the largest fires in the Region's recorded history. More than 1,400 fires burned approximately 700,000 acres of National Forest System lands in the Northern Region and 1.4 million acres of forest in the Greater Yellowstone Area—the worst fire season since 1919, when 1.5 million acres burned.

Two years of record-breaking drought set the stage. A hot, dry summer, a rash of dry lightning storms, winds of up to 60 miles per hour, fuel moistures as low as 2%, and no moisture recovery at night—these factors combined to create explosive conditions. At one point in September, more than 17,000 people were involved in fire suppression in the Northern Region, and Glacier and Yellowstone National Parks. An additional 2,000 people were providing support services. Personnel came from every state in the United States. When fires were burning at rates of 100,000 to 500,000



Walking out of Canyon Creek Fire. Photo by Bert Lindler

acres a day, and crews were scarce, 6,000 men and women were provided by the Army, Air Force and Marine Corps, and 500 by the National Guard. A first-ever event happened when the Canadian government sent firefighters, equipment, and aircraft to help the effort. Many retirees who had, during their careers, been active in fire suppression, were called back to help.

Fire names that will reside forever in the memory of thousands are Canyon Creek, Gates Park, Warm Springs Creek, Combination, Red Bench, Ladder, Moose Creek Complex, Camp Creek; and in the Greater Yellowstone Area, Hellroaring, Storm Creek, Fan, North Fork, Clover/Mist, Wolf Lake, and the Snake River Complex. There were more than 1,400 fires in the Region. This figure represents about a third of the total number of fires on all land ownerships in Montana and Idaho.

It was a season we won't forget, and one in which thousands worked extremely hard, putting their skills, patience, endurance and abilities to the test.

Recovering From The Fires

Restoring The Land

An aggressive recovery and restoration effort was energized even before the fires were out. Erosion and soil management teams moved into the burn areas as soon as fires cooled. Firelines were seeded; salvage timber was prepared for sale. Emergency rehabilitation projects completed before December 1 include 56,000 acres seeded, 128 miles of road and trails repaired and cross-ditched, 12,000 log erosion barriers constructed, 85 miles of riparian protection fence constructed, 2 miles of stream channel stabilized, and sediment traps installed.

This emergency watershed rehabilitation cost \$2.2 million to date; a long-term recovery program, which includes money for reforestation, noxious weed control, range, trails, and timber sale preparation is expected to cost \$12.9 million.

Each Forest in the Region has developed a long-term rehabilitation and resource recovery plan. Plans include monitoring and evaluation work that has already begun.

More Than Rehab

by Dave Tippets, Fire Recovery Team

The Fire Recovery Project represents more than fire rehabilitation.

Seeding, waterbarring firelines and replacing burned trail signs are just one type of work that Northern Region employees will do to recover from the 1988 fire season.

In early September, Regional Forester John Mumma formed a task force to put together a game plan to deal with all of the impacts of the '88 historic fire season. The task force responded with a charter to each Forest Supervisor and asked for support.

Mumma named Bob Schrenk from TCFPM as the Acting Regional fire recovery coordinator. Leaders were also named for each emphasis item in the charter.

The charter identifies nine areas of emphasis, with public involvement being the major area.

The Fire Recovery Project will last for at least two years. Some specific activities such as noxious weed monitoring and treatment will continue much longer.



Helena National Forest Awarded

by Lorraine Parrish, Public Affairs Specialist

At a recent meeting of the National Exchange Club, Capitol City Chapter, the Helena NF received a special recognition award for "outstanding and dedicated service as firefighters of the Warm Springs Creek Fire, 1988." Janet Engstrom, President of the Capitol City Chapter, made the presentation to Forest Supervisor Ernie Nunn at the conclusion of his speech to the group on the "Fires of '88 in Montana." He specifically addressed those fires so close to home—the Warm Springs Creek and Canyon Creek Fires.

Nunn said he was especially pleased to accept the award on behalf of all the individuals who assisted in suppressing the Warm Springs Creek Fire.

The National Exchange Club is a non-profit, volunteer organization, dedicated to community service. Engstrom said some of their members live in areas close to the Warm Springs Creek Fire and saw firsthand the efforts needed to control a major fire. They felt the efforts of the Forest Service should be recognized and awarded.



The Leading Edge

by John Mumma, Regional Forester

Fire season this year was a real test for everyone involved, and I am extremely proud of all of you for the way you responded to this emergency. It was, and still is, a tremendous impact on us, and resulted in many other projects being delayed or altered.

In spite of this, we've accomplished some remarkable things this year. Great strides have been made in challenge cost-share partnerships, the Recreation Strategy program, the Rise to the Future program, among others. Our Regional Pilot program is off

to a good start with many Forests bringing in excellent suggestions. I'm looking forward to more of these innovative ideas as we work to make our agency more efficient and to promote a quality work-life.

As we close the door to 1988 and enter 1989, I want to wish each of you a very happy holiday season, and invite you to look forward, along with me, to another good year ahead. It will have its challenges, as we know, but I have confidence in the Northern Region employees meeting any challenge we get.

The Fire Recovery Team

Fires were only the beginning of the 1988 fire season. It continues now—in office settings, on computers, in meetings, in presentations to in-service groups and community organizations, through creating brochures and videos, and countless other ways. This fire recovery effort is expected to last into 1990.

Tucked away in the old library on the first floor of the Federal Building in Missoula the Fire Recovery Team is working diligently (sometimes feverishly) on their many assignments.

A few of the players and projects:

■ Laird Robinson, RO Information Office, is the Public Involvement Coordinator for the team, serving as a focal point for production and distribution of all information products and activities associated with the recovery project.

■ Mary Zabinski, Nez Perce NF PAO, is busy developing a chronology of events for the 1988 fire season.

■ Ellie Chambers, from the Idaho Panhandle NFs, put her skills to work developing a framework for promoting fundraising, and utilizing volunteer help and donations.

■ Carol Evans, graphic artist for the RO Information Office, is creating a traveling display which will portray the fire rehabilitation efforts in the Region. It is expected to be ready for Missoula's winter fair, and will be available for use by Forests in the Region.

■ John McCulloch, of PP&B in the Regional Office, is working on a special publication.

■ Dave Tippetts, Public Affairs Specialist for the recovery team, headed up the publication of a Congressional briefing packet. Many were called in to help meet this project's critical deadline, including Drew Van Fossen of the Missoulian, Bill Hayden of the National Park Service, Kevin Lee, Aerial Fire Depot and Sara Lustgraaf, RO engineering. Despite reviews and editorial changes continuing right up to the printing deadline, the project was completed on time. And Tuesday morning, December 13, 150 copies of the packet boarded a plane along with an entourage of

Recovery Team members, destined for Washington DC.

Tippetts next assignment is to develop a slide presentation suitable for speakers to deliver to any groups or organizations interested in the Region's fire recovery efforts.

■ Bert Kulesza, of RAWE in the Regional Office, is the liaison for a parallel fire recovery team for the Greater Yellowstone Area.

■ Dick Roullier of RO Management Systems devised a special data base to store and utilize information of the Region's 1988 fires. Bruce Jeske, Jackie Brost and Sarah Grant were key players. Rosa Nygaard, RAWE, provided a great deal of information for this data base.

■ Wendel Hann, RAWE, and Joe Bednorz, Forest Planner on the Nez Perce NF, headed up an evaluation, research and monitoring effort. They recently held a workshop in Missoula, attended by representatives from several Federal and State agencies, the University of Montana, Montana State University, Montana College of Minerals and Technology, and many private organizations.

■ Vern Fleisher of PP&B in the Regional Office developed the budget for the recovery project.

■ A Board of Directors, including Staff Directors Jim Reid, Jim Hagemeyer, Ron Haag and Beth Horn, and Forest Supervisor Ernie Nunn oversee the entire effort.

This is only a sampling of projects and people involved. Many others throughout the Region are working towards the Region's fire recovery effort in a variety of ways, and many more projects are planned.

A big "Thank You" to the many of you who have sent slides and photos for the Fire Recovery projects. Your cooperation will help make the team's job much easier.

Living Through A Burnover

from information supplied by Mark Sembach, firefighter

"**W**hen the flames first entered the front of my shelter....burning my face and then my vocal cords and lungs with my first gasp of air, I thought of getting up and running. However, I remembered the words my crewboss, Mark Rogers, had spoken, 'No matter how bad it gets in your shelter, it's a lot worse outside your shelter.' That instantaneous thought was all I needed. I proceeded to extinguish the flames with my arms, thus causing them to get third degree burns from the elbows down. The second 'passing of the flamefront' was even more intense and hot than the first one....it lifted the back of my shelter, thus exposing the lower part of my legs to the flames..I experienced 879 degrees for at least eight minutes. All during this time I kept remembering what my crewboss had said. With his teaching and my own personal discipline I survived the burnover."

Mark Sembach was a seasonal firefighter for the Forest Service—a member of the Wyoming Interagency Hotshots out of Greybull, Wyoming. Some of you may remember that the Wyoming Hotshots were forced to deploy their shelters on the Brewer Fire in southeast Montana. Mark describes the "burnover" experience as terrifying, and one "that none of us will ever forget." He received first through third degree burns over 20% of his body, and spent 34 days in the hospital with burn debridement treatments and skin graft surgery. He said "no matter how painful it got I always reminded myself that I was lucky to be alive."

Mark credits several people for his life: his crew boss, Mark Rogers, for the training he gave; the two EMT's on his crew, Frank "Buddy" Antos and Todd Bates for treating his burns on the scene; and the many other crew members who helped. And the fire shelter. He said, "Your fire shelter and fire clothing will save your life if they are in good condition. Treat your safety equipment gently and it just may save your life someday. Mine did!"

Adventures in a Fire Camp

by Nora McCloskey-Bauer, Program Assistant, Kootenai National Forest

When you get back to the office after a few weeks of fire duty, there's one thing you can be sure of—hearing everyone else's fire stories. This year was no exception, but mine is a little out of the ordinary and I'd like to share it with you.

Last year in California was "fun" they say, but I didn't see the sun for a month, and got tired of eating things that floated down to land on the plate, and even though someone stole my sleeping bag and all my dirty socks and underwear it was still "fun." But that was last year.

This year, before reporting to Canyon Creek Fire, I had to buy another sleeping bag—not to replace the one I lost in California, but the one somebody "permanently borrowed" the previous week as I came off the Dry Fork Fire near Libby. Once in camp, I pitched my tent and checked out another sleeping bag from supply in case it got cold.

The wind increased tremendously. During the next two days the fire consumed over 160,000 acres, and we got the word to evacuate to Augusta High School. The next morning it was back to fire camp—what was left of it. About half of the camp was gone—along with my tent, and of course my sleeping bags (four bags in two years—surely a record). I did find part of one of my bags—a nicely browned 3"x4" piece. I was lucky though. Three crews lost everything (107 of our people couldn't be evacuated and had to use their fire shelters). But we're troopers, right? Another tent was purchased through the commissary, camp was reestablished, and life went on.

Up to this point I had been burned out, rained out, mudded out, snowed out, frightened by black widow spiders, lost, and left behind—not your typical fire assignment. But, all in all, fire jobs are dirty, facilities inadequate, and situations hazardous. Long hours are standard. You are served some of the best food, and some

of the worst. With little sleep and an overabundance of responsibility, tempers run short—you meet some of the best people and others.... Fire camp. That's what it's all about; what we tell the stories of and miss the family for. And what of next year? Fire? Are you crazy? It's a sure bet, but I'll see you there!

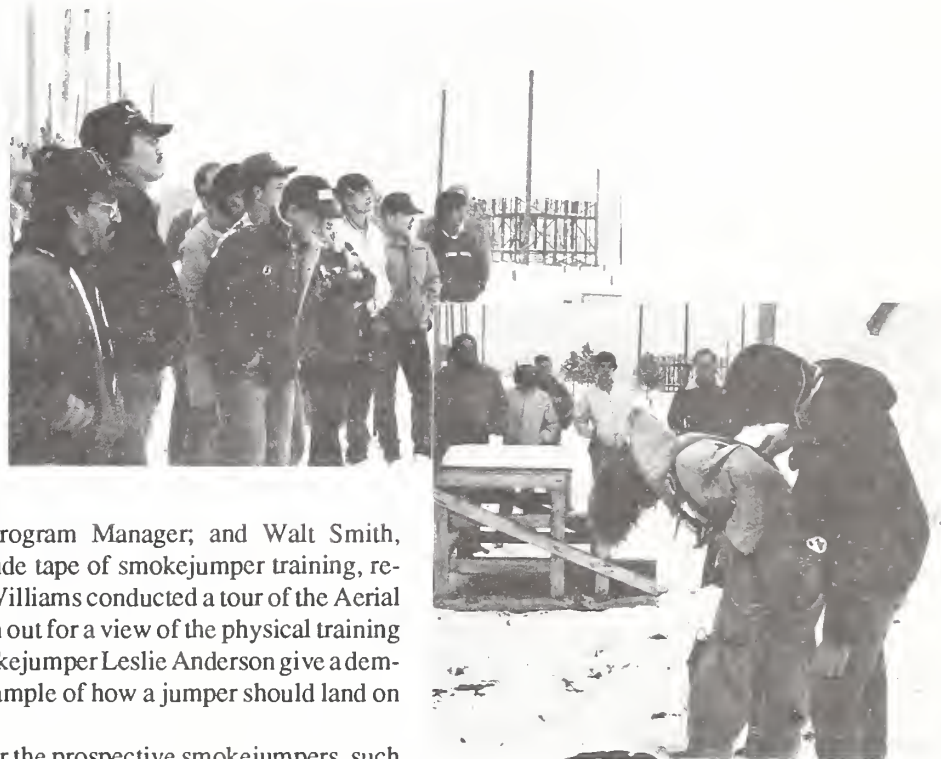
Home Sweet Home



Career Day -- Aerial Fire Depot

by Eleanor YellowRobe, Information Office, R.O.

The Smokejumper Career Day, held at the Aerial Fire Depot (AFD) and sponsored by the Federal Womens Program and the Native American Program, was a huge success for the second year in a row. Mary Fields, AFD, and George Johnson, Missoula Technology Development Center, commented that the large turnout of 55 prospective jumpers was due to the fierce fire season of '88. A large portion of the prospective jumpers were Native American women and men coming from as far away as the Fort Peck Reservation and other Montana Reservations.



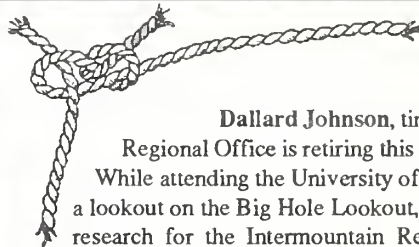
Smokejumper Leslie Anderson dresses out for a jump.

The day began with an introduction from George Johnson and welcome messages given by Jim Mann, Director of Aviation and Fire Management; Ira Jones, Native American Program Manager; and Walt Smith, Smokejumper. George Johnson presented a slide tape of smokejumper training, responsibilities, and duties. Afterwards, Wayne Williams conducted a tour of the Aerial Fire Depot. The prospective jumpers were taken out for a view of the physical training course and were given an opportunity to see Smokejumper Leslie Anderson give a demonstration of dressing out for a jump, and an example of how a jumper should land on the ground once out of plane.

The afternoon was filled with workshops for the prospective smokejumpers, such as: Applications and Personnel given by Steve Clairmont and Mary Fields; the intensity of Physical Training given by Smokejumper Marge Phillips; and Getting Experience given by Smokejumper Leslie Anderson. The day concluded with a questions and answer period, and then closing comments by George Johnson. The prospective jumpers were free to leave, pondering a future career as a Forest Service Smokejumper.

Awards For Firefighters !!

If you worked on fires in the Northern Region in 1988, you can expect to receive a special award that's being created in your honor. It's an exceptionally nice item that will always bring back memories of Fire Season 1988, and will increase in value over the years. You can expect to receive this award in late spring.



Retirements

Dallard Johnson, timber sale administration specialist in the Regional Office is retiring this month after 33 years of Federal service. While attending the University of Montana, Johnson worked summers as a lookout on the Big Hole Lookout, Plains District, Lolo NF, in pole blight research for the Intermountain Research Station in Missoula, and as a smokejumper. He worked on the Troy, Rexford, and Yaak Districts on the Kootenai NF, and the Red River District on the Nez Perce NF. In 1966 he moved to the Kaniksu NF as a timber appraiser, and later was promoted to timber management staff officer. Johnson has been in his current position in the Regional Office since 1974.

Norma Koski is retiring December 31 after almost 19 years on the Custer NF. She began her career as a receptionist and worked her way into public information, spending much time speaking to external groups and at schools. After 14 years in information, Koski moved into the finance section. At her recent retirement party, retired Public Affairs Officer, John Gibson, said Norma was what the Good Host program was all about—she was good with the public and made every person feel important.

News Briefs

Scholarship Fund Started

A new scholarship fund in memory of former Bitterroot NF Supervisor Bob Morgan has been set up. The scholarship will be available for a University of Montana student majoring in forestry, and will be based on high academic achievement and/or financial need. Bob Morgan was a 1948 forestry graduate from the University of Montana. He died October 15. Contributions may be sent to:

Robert S. Morgan Forestry Scholarship Fund
University of Montana Foundation
P.O. Box 7159
Missoula, MT 59807

Combined Federal Campaign Results

Kootenai National Forest

Chuck Brooks, CFC coordinator for the Kootenai NF reports that the Forest's donations represent an all time high for the Forest Service in Lincoln County. The employees donated a total of \$8,086 to the many fine public service organizations that provide help to people in need in Lincoln County.

Lolo National Forest

The CFC campaign on the Lolo NF had a little different twist, according to coordinator Kathy Cromwell-Christian. With every dollar that an employee contributed to their favorite charity, they were also given an equal number of votes that would allow them to swap places for an afternoon with the Forest Supervisor and Program Officers. Winners actually assumed the duties of their peers, and vice versa. There was fun had in the nominating and serious campaigning by individuals caught up in the election fever. A feeling of enthusiasm accompanied the entire

campaign. There was also an additional category that allowed for contributing employees to vote for the Santa of their choice for the Forest Christmas Party. Lest we leave behind the real goal—the Lolo NF saw a 33% increase in contributions over last year!

Slides Needed of Wildernesses

A major National Wilderness Management Conference is being planned for September 11-17, 1989, in Minneapolis, MN. Sponsors are the Forest Service, Bureau of Land Management, National Park Service, U.S. Fish and Wildlife Service, College of Natural Resources, and the University of Minnesota. Assistance is needed now to prepare a special audio-visual media program. Good photos are needed of any wilderness managed by the NPS, FWS, BLM, or FS which show ecological diversity at any season of the year and a good cross-section of wilderness from all parts of the U.S. They will be incorporated into a dynamic audio-visual program that can be used for a wilderness education program after the conference.

Any person or unit may submit duplicate 35mm slides, or 3 1/2 x 5 inch contact prints from 35mm slides or negatives, which show the variation in units of the Wilderness System. Horizontal slides are preferred, but vertical photos can be considered. Submit directly to:

Bob Tribble
ATTN: WILDERNESS CONFERENCE
Public Affairs Office, USDA Forest Service
630 Sansome St.
San Francisco, CA 94111

Original slides or negatives of selected photographs will be requested for production purposes. Contact Bob Tribble at FTS 556-4246 or 556-3370 for more information.

Coming Events

An Invitation to Retirees

Retirees and their spouses are invited to a special coffee in their honor sponsored by the Forestry Triangle. The event will be held January 4 between 1:00 and 3:00 p.m. in the West Conference Room at the Regional Office. A special attraction will be an arts and crafts exhibit. For more information call Myra Mumma (543-4650) or Nan Benediktson (728-4270).

A Retirement Party on the Beaverhead NF

Vergil Lindsey, Ranger on the Madison District since 1966, is retiring December 30. A special send-off party for him is scheduled for January 21 at the Elks Club in Virginia City, Montana. A no-host cocktail hour starts at 6:00 p.m.; dinner at 7:00. Prime rib will be served. Please call Jan Dunning, (406) 682-4253, by January 10 for reservations. The dinner costs \$10 per person; \$19 per couple.

Fenn Ranger Station Planning Celebration

The year 1990 marks the 50th anniversary of the Nez Perce NF's Fenn Ranger Station. Located on the wild and scenic Selway River, the Station is one of the architectural gems of the Civilian Conservation Corps (CCC) era. A birthday party is planned for June 28, 1990 to celebrate the Station, the role the CCC played in Forest Service history in the area, and the

Station's inclusion on the National Register of Historic Places.

A committee is being formed to help in research, collections, and interpretation of historical information on the Selway area; and to help plan the anniversary celebration. The committee will meet and work with CCC alumni, current and retired Forest Service employees, and local citizens. If you are interested in helping plan these activities, write Gloria Flora, District Ranger, Selway Ranger District, HC 75, Box 91, Kooskia, ID 83539; or call her at (208) 926-4258.

In Memoriam

Russell E. Vance, former Region One employee, died September 13 in Homestead, Florida. Vance served as Regional Fiscal Agent from January, 1967 until he retired in July, 1968. Previous to that he worked in the Washington Office, in Region Seven, and on the Idaho forests. A book on Vance's life is being compiled by his family. Anyone who wants to send an anecdote for the book, send to Robert Vance, Apartment B, 1136710 N. Kendall Drive, Miami, Florida 33156.

Personnel Actions

BEAVERHEAD NATIONAL FOREST

HARVEY, CAROL, frstr tech, Wise River RD, promotion

BITTERROOT NATIONAL FOREST

CHRISTIANSON, NAN, supvry geol, Bozeman RD, reassign to geol (inter), Darby RD

FERGUSON, CLARENCE, supvry rec speclst, Trapper JCCC, prom, supvry soc srvc asst, Pine Ridge JCCC

FREIDMAN, LAURIE, sec, SCS, reassign to soc srvc asst, Trapper Creek JCCC

KELSEY, CHRIS, frstry, Darby RD, promotion, frstry, BLM

KRUEGER, JANICE, rng cons, Sula RD, promotion

MENA EVANS, RAMONA, resource clk, West Fork RD, qual step inc

ORMISTON, JOHN, wlfif biolgst, SO, suggest cash award

SKIPPER, LYGIA, clk typ, SO, career cond appt

CUSTER NATIONAL FOREST

ANDERSON, ROBERT, range tech, Grand River RD, award

ANKRUM, LORI, resource clk typ, SO, award

BARRETT, JIM, const insp, SO, retirement

BRADY, LYNN, inf recptnst, SO, CC appt

FRIDLEY, BETTY, bus mgmt clk, McKenzie RD, Promotion

GASKILL, BARBARA, SSS, Ashland RD, award

GILG, TIM, frstry tech, Ashland RD, award

GREY EAGLE, BEN, frstry aid, Sioux RD, veteran readjust appt

HAYMAN, SUSAN, range con, Ashland RD, award

HILLIARD, DENNIS, range con, Grand River RD, award

MILBURN, SHERI, public aff speclst, reassign from Beaverhead NF to SO

NORRIS, MAX, forester, McKenzie RD, reassign to Sawtooth NRA

OLSON, TERRY, frstry tech, Ashland RD, award

PECK-MONIAK, KAREN, frstry tech, Ashland RD, award

RETZKY, JOHN, frstry tech, Ashland RD, award

RIZOR, RAYMOND, frstry tech, Ashland RD, award

ROBINSON, CHARLENE, SSS, Ashland RD, promotion

SCHOTT, KERMIT, frstry tech, Ashland RD, award

TOPIC, BOB, compr spec, SO, award

DEERLODGE NATIONAL FOREST

AVERY, DAN, geol, Wallowa-Whitman NF, reassignment to Deerlodge SO

BEST, JOHN, Jefferson RD, cash award for safety

BUCKLER, LINDA, acct tech, Deerlodge SO, promotion.

CHALLINOR, HOWARD, frstr, Philipsburg RD retirement

CHOR, JULIANN, comp asst, Anaconda CCC, reassign from soc serv aid

CLARK, DAWN, surveying tech, covr to career cond appt, Deerlodge SO

CRAWFORD, CHERYL, co-op ed student (Range), Butte RD

CRAWFORD, TOM, Jefferson RD, cash award for safety

DURKAN, SHEILA, range conserv, Umatilla NF, reassign to Jefferson RD

EVANS, PATRICE, comp clk, Butte RD, conv to career cond appt

FOLLMAN, BETSY, wildl biol, reassignment Eng position Deerlodge SO

GERDES, STEVEN, frstr tech, Philipsburg RD, conv to career cond appt

GRINDE, CYNTHIA, Butte RD reassignment to Custer NF

HANSEN, WALTER, soc serv asst, Anaconda CCC, resignation

HEIDEN, ROBERT, frstr tech, conv to career cond appt

HODGE, BOB, frstr tech, Butte RD, conv to continuing appt

HOTALEN, TOM, trng instruc, Gray Towers, reassign to Anaconda CCC

JOHNSON, KIM, civ eng, IPNF, reassignment to Deerlodge SO

LABAHN, WENDY, Butte RD, reassignment to Philipsburg RD

LANGE, KIM, survyr tech, conv to career cond appt, Deerlodge SO

LITTLE, IRENE, co-op ed student (Personnel), Deerlodge SO

LORENZO, JUDY, soc serv asst Anaconda CCC, conv to career cond appt

LUNCEFORD, CECILIA, computer clk, Deerlodge RD promotion

LUNCEFORD, CECILIA, bus mgmt asst Deerlodge RD, reassign from comp asst

MARTIN, GREG, cook (VRA), Anaconda CCC, conv to continuing appt

MCELROY, PAUL, Jefferson RD, cash award for safety

MCNAMARA, JAMES, frstry tech, Butte RD, conv to career cond appt

MEYERS, CAROLE, guidance counselor, Anaconda CCC, conv to career cond appt

MISSBUECHLER, FRED, Jefferson RD, cash award for safety

MOODRY, TOM, survyr tech, Deerlodge SO, conv to cond appt

PARKER, JAMES, forester, Butte RD, temp promotion

PARKER, JAMIE, Deer Lodge RD, reassignment to Butte RD

POCHELON, REMY, Philipsburg RD, reassignment to Flathead NF

RINEHART, SUSAN, rge conserv, Deer Lodge RD, promotion

RINTALA, RUSSELL, motor vehicle oper Deerlodge SO, conv to cond appt

SANDBAK, DENNIS, frstr tech, Butte RD, career cond appt

SEEGER, RUTH, geol, Deerlodge NF, reassignment from Allegheny NF

SCHUELKE, BRUCE, frstr tech, Philipsburg RD, conv to career cond appt

SHULDEN, JIM, Deerlodge SO, reassignment to R1 RO

STOTHART, BOB, Jefferson RD, cash award for safety

SULLIVAN, ROBERT, hydrol, Deerlodge NF, temp promotion

FLATHEAD NATIONAL FOREST

DOBROCKE, KAYE, resource acctg tech, Tally Lake RD, promotion

HELLAND, JEFF, forestry tech, Tally Lake RD, award

KUENNEN, REED, wildlife biologist, Tally Lake RD, QSI

MAVENCAMP, KARY, electronic tech trainee, SO, career cond appt

MOHLER, MERRIAM, clk-typ, SO, exc appt-cond at Glacier View RD

PATTERSON, PHOEBE, forestry tech, Swan Lake RD, prom to outdoor recreation planner

ROBINSON, PETE, forestry tech, Swan Lake RD, promotion

WILLITS, JAN, resource clerk, SO, prom to purchasing agent, SO

GALLATIN NATIONAL FOREST

DEARING, PAT, contract spec, SO, promotion

HELENA NATIONAL FOREST

ANDERSON, THOMAS, forester, Townsend RD, award

ARMSTRONG, BONNER, forester, SO, award

BEAVER, TERRY, frstry tech, Helena RD, award

BENNETT, LYNN, forester, Lincoln RD, award

BROHMAN, RONALD, forester, SO, award

BURNS, JERRY, frstry tech, Lincoln RD, award

CAMPBELL, DARCY, clk typ, SO, award

COLE, LAWRENCE, frstry tech, SO, conversion to professional forester and Award

CRON, JEFFERY, lead frstry tech, Helena RD, award

CRONENWETT, LARRY, spvry civil engineer, SO, award

CROWDER, JUDY, resource clerk, Helena RD, career cond appt

CURTIS, GAYLENE, computer clk, Townsend RD, award

ELLIOTT, NINA, SSS, Helena RD, award

ENGLISH, ROBERTA, clk typ, SO, award and Employee of the Month

GILBERT, ALFRED (SAM) forester, SO, award

GOBBS, DEENA, clk typ, Townsend RD, award

HAWKINS, DONNA, frstry tech, lincoln RD, award

HEFFNER, DENNIS, forester, SO, award

KELLOGG, ROBERT, frstry tech, SO, award

KENDLY, JACK, forester, Helena RD, award

LARSEN, DAVID, frstry tech, SO, award

LAVELL, JEAN, wildlife biol, Lincoln RD, reassignment to SO

LEWIS, ZILIA, resource clerk, Lincoln RD promotion

MCKINNON, DON, frstry tech, SO, award

MCPHERSON, TAMMY, clk typ, SO, career cond appt and award

MEYER, GERALD, frstry tech, Helena RD, award

MILBURN, DENNIS, frstry tech, Helena RD, award

MOOTHART, LAVERNA, spvry purchsg agt, SO, award

MOULETT, PETER, frstry tech, Helena RD, award

NEAL, CHARLES, resource asst, Helena RD, award

REDFERN, SAMUEL, range con, Townsend RD, award

SHEPPARD, JOAN, contr speclst, SO, award

SHORT, BRUCE, timber mgmt asst, Helena RD, award

STOKES, LAURA, frstry tech, Lincoln RD, award

SUTTON, JOHN, carpenter, Lincoln RD, career cond appt

THOMAS, JEAN, hydrologist, SO, award

TURNER, DAVID, frstry tech, Helena RD, award

WATKINS, MICHAEL, frstr tech Townsend RD, converted to professional forester

IDAHO PANHANDLE NATIONAL FORESTS

HAUGEN, LORI, converted to career-cond appt Priest Lake RD

HAWDON, LISA, converted to career-cond appt Priest Lake RD

MEYER, LARRY, converted to career-cond appt Priest Lake RD

MONTGOMERY, BARBARA, frstry techn, St. Maries RD, promotion

NAFFIN, KEVIN, converted to career-cond appt Bonners Ferry RD

The NORTHERN REGION NEWS is published by the Northern Region Information Office for employees and retirees. Items for the newsletter should be sent to the Editor, Deanna Riebe, USDA-Forest Service, Northern Region Information Office, PO Box 7669, Missoula, MT 59807. FTS 585-3094; commercial 329-3094. Data General: D.Riebe:R01A.

PRICE, MARY, forester, Avery RD, promotion
SMITH, DIANA R, computer science trainee, SO, promotion
STANTUS, PAUL, suprvy civil engr, St Maries RD prom, Kootenai NF
STRANAHAN, CAROL, converted to career-cond appt, Avery RD.
WHITE, KENNETH, resignation, South Zone Eng

KOOTENAI NATIONAL FOREST

ADAMS, PAMELA, clk, Fisher River RD, career cond appt inf recpt, CSSC
ADAMS, JAY, suprvy frstry tech, Fisher River RD, sus sup perf award
ALTMAN, GARY, wildf biolgst, Fisher River RD, award
BRUNER, EVELYN, suprt srvc sup, Cabinet RD, prom
CHANEY, DON, auto workr, Rexford RD, sus sup perf
CLARK, EMOGENE, resource clk, NESS, sus sup perf
CRAIG, MAGGIE, fish biolgst, Fisher River RD, award
CUMMINGS, CINDY, clk typ, WSSC, prom, resource clk
CURTISS, RON, suprvy forstry tech, Fisher River RD, award
DAVIDSON, TAMMI, carto aid, Fisher River RD,
DAVIDSON, TAMRA, carto aid, Fisher River RD, career cond appt, carto
techncn, SO, ES
DEYOUNG, LINDA, fnancl clk, CSSC, special act
DIMON, PAULETTE, resource clk, NESS, award
DICKERSON, GARY, frstr Idaho Panhandle NF, prom frstr Fisher River RD
DICKERSON, JOAN, frstr Idaho Panhandle NF, reassign frstr, Libby RD
ERLER, PAUL, frstr, Rexford RD, sus sup perf
EVELYN, JOYCE, frstry tech, Cabinet RD, award
FERGUSON, LESLIE, frstry tech, Fisher River RD, award
GAUGER, DELLORA, info tech, NESS, sus sup perf
GAUGER, DELLORA, bus mgmt clk, NESS, prom, info tech
GAUTREAU, RUSS, frstry tech Libby RD, prom frstr Three Rivers RD
GOODRICH, DAN, frst tech, Three Rivers RD, spec act
HANSEN, JONATHAN, frstry tech, Cabinet RD, award
HARLOW, RICHARD, frstr, R4, Payette NF, reassign frstr, Fisher River RD
HARRIS, MICHAEL, frstr, Deerlodge NF, reassign frstr, Cabinet RD
HELMRICK, DAVE, frstry tech, Rexford RD, prom frstr, Three Rivers RD
JAMES, JESSE, civ engrg tech, West Zone, spec act
KELSEY, JUDY, bus mgmt clk, WSSC, reassign, res clk
KURTZ, LOU, sup cet, West Zone, spec act
LAFORD, RETA, forstry, Rexford RD, award
LEFEVER, STEVE, frstry tech, Fisher River RD, award
LIND, RITA, purchg agt, WSSC, promotion,
LOEHN, RICH, civil engrg tech, West Zone, spec act
LUNDEEN, JANET, frstr tech Three Rivers RD, career cond appt, vouchr
exmnr, SO, AS
MCGRATH, JOHN, sup cet, West Zone special act
MINDRUP, MARY, frstr tech, R4, Payette NF, prom frstr Three Rivers RD
NELSON, NEIL, frstr tech, Rexford RD, award
NICHOLLS, DENNIS, frstr tech, Cabinet RD, award
PEMENT, DEBBIE, clk typst, SO, promotion, pers clk

REBO, SANDRA, career cond appt, tele oprtr, SO, AS
RICHARDSON, LARRY, electr tech, SO, AS, spec act
ROMEY, MARK, frstr, Gallatin NF, award
SCHAD, JOE, labr, Three Rivers RD, spec act
SHOTZBERGER, DEENA, frstr, Fisher River RD, award
STANTUS, PAUL, suprvy civil engr, Idaho Panhandle NF, prom suprvy civ
enrg, West Zone
SWIGER, JACK, civil engrg tech, West Zone, spec act
TEMPLIN, JACK, SCSEP enr, Three Rivers RD, Spec Act
THOMPSON, JO, CC Appt, teleph oprtr, SO, AS
THOMPSON, JO, teleph oprtr, SO, AS, resignation
TUBB, STAN, sup frstry tech, Fisher River RD, award
WARNELL, YUKI, bus mgmt clk, CSSC, 2 spec act award
WILSON, LAURIE, CC Appt, bus mgmt clk, WSSC

LEWIS & CLARK NATIONAL FOREST

ARENSMEYER, ANN, clk typ, RMRD, resignation
EASTERLY, THERESA, dist clk, RMRD, reinstatement
KARLSON, MARIE, clk typ, KHRD, promotion
METRIONE, JOHN, frstry techncn, KHRD, new hire
MILLEY, ALLEN, frstr, JRD, reassignment
MORRIS, SANDRA, clk typ, RMRD, new hire

NEZ PERCE NATIONAL FOREST

ARTLEY, RICHARD, frstr, SO, cash award
BIRD, JEROME, frstr, Selway RD, cash award
COBURN, KARON, supp serv supv, Elk City RD, cash award
DAILEY, SUSAN, prog asst, SO, promotion
DELIMATA, EUGENE, frstr tech, Salmon River RD, promotion
DIDIER, RAENETTE, resour spec, SO, cash award, promotion
HAENER, DIANE, resour clk, Clearwater RD, cash award
HAMMES, JEFFREY, frstr, Elk City RD, suggestion award
HARDIN, IRIS, supv bdgt & acct analyst, SO, cash award
MCNICOLL, CECILIA, rge conserv, Clearwater RD, reassign from Custer
NF to Nez Perce NF
MITCHELL, CLIFFORD, frstr, Elk City RD, performance award
MITCHELL, KIMBERLY, wildl biol, Elk City RD, performance award
PETERSON, MARK, supv frstr, Red River RD, performance award
RUZICKA, THERESA, clk typ, Elk City RD, cash award, career cond
SMITH, CARLETTE, comp asst, Selway RD, cash award, promotion
TOMLINSON, CHARLES, supv frstr reassign Tongass NF to Nez Perce
VACHOWSKI, BRIAN, supv frstr, SO, cash award
WEAVER, STEPHEN, wildl biol, Selway RD, cash award
WILKINSON, WILLIAM, supv frstr, Selway RD, cash award
WINKLER, CAROLYN, clk typ, Elk City RD, promotion
WINKLER, GREGG, frstr tech, Clearwater RD, career cond

United States
Department of
Agriculture

Forest Service
Federal Building
P.O. Box 7669
Missoula, MT. 59807

OFFICIAL BUSINESS

PENALTY FOR PRIVATE USE, \$300

ADDRESS CORRECTION REQUESTED

BULKRATE
POSTAGE & FEES
PAID
USDA-FS
PERMIT NO.G-40