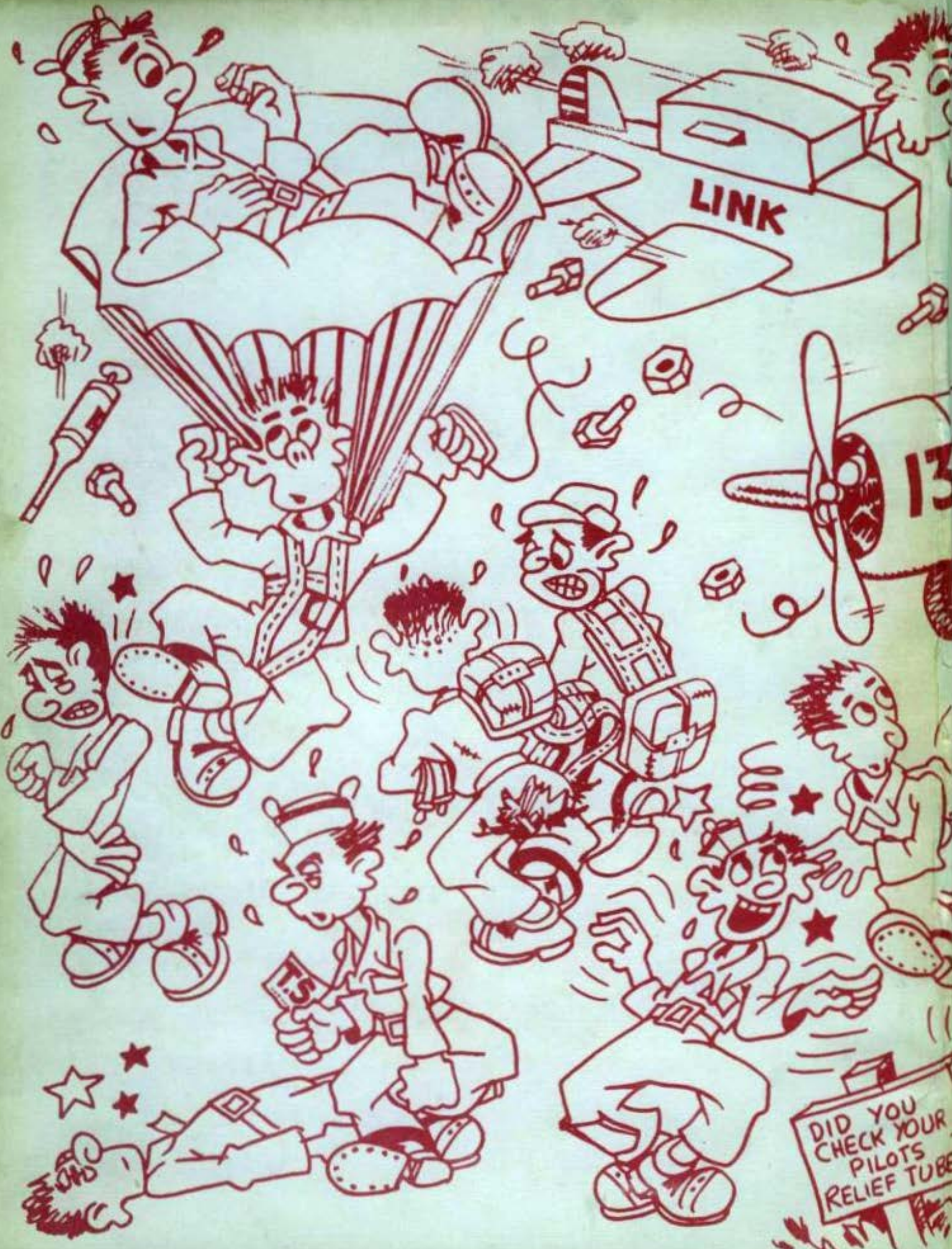


The  
BEE-TEE

WACO ARMY AIR FIELD

44 C



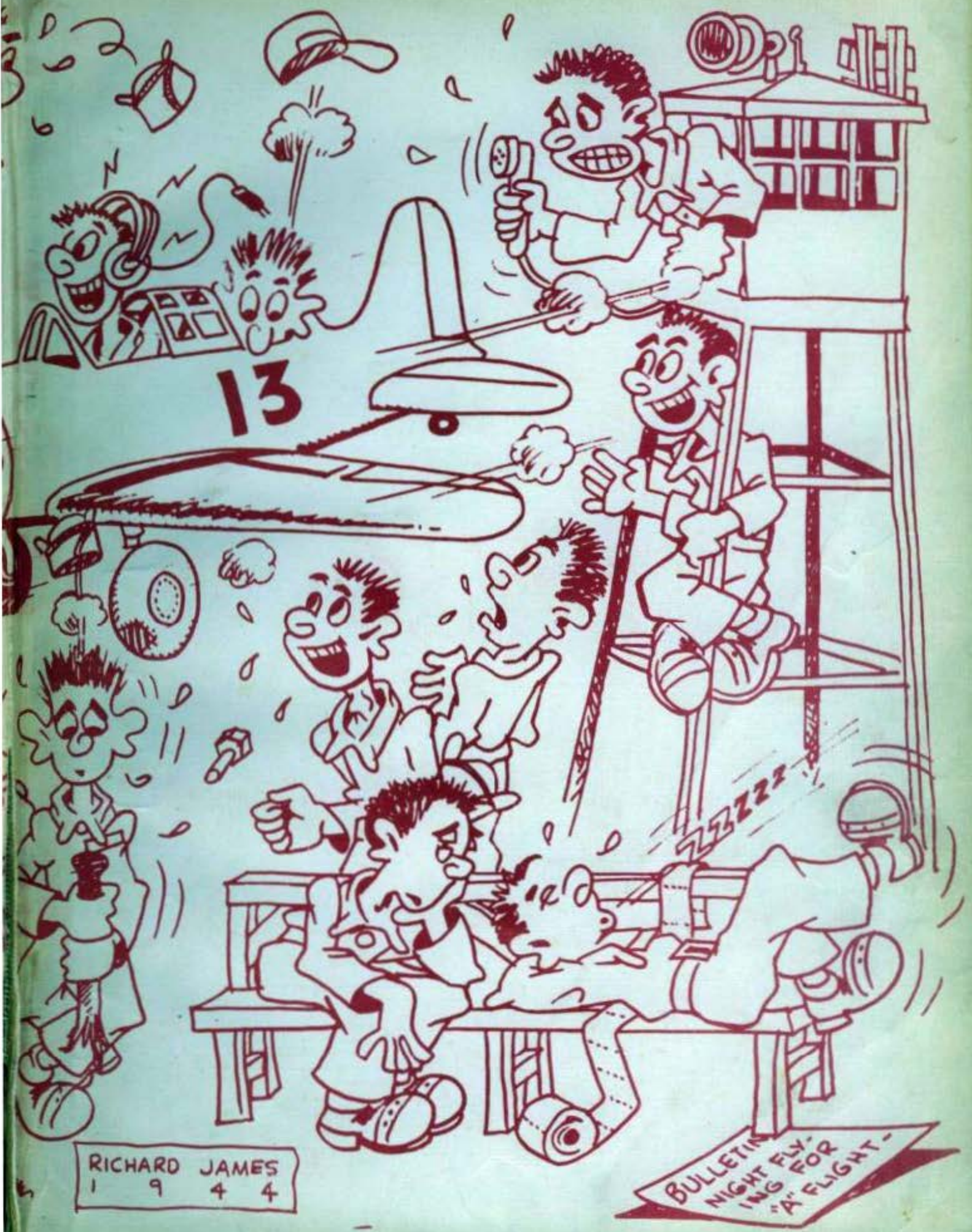


LINK

13

DID YOU  
CHECK YOUR  
PILOTS  
RELIEF TUBE





13

RICHARD JAMES  
1 9 4 4

BULLETIN FLYING FOR  
"A" FLIGHT

# Page Missing

This page was inserted to keep facing pages together.



*Presenting*

THE BEE-TEE

*for*

Class 44-C

Waco Army Air Field  
Waco, Texas







*Commanding*



COLONEL

*Bob Arnold*



# Directors



LT. COL. DAVID G. LOGG  
*Ass't Operations and Training Officer*



COL. JAMES A. DEMARCO  
*Operations and Training Officer*



MAJOR JOHN D. LAVALLE  
*Director of Flying*



MAJOR CHARLES F. HEWINS  
*Training Inspector*



MAJOR JULES J. VAN DERSA  
*Ass't Director of Flying*



# Executive



LT. COL. DONALD R. JOHNSTON  
*Executive Officer*



LT. VIVIAN E. WOODY  
*Ass't Adjutant*



CAPT. FREDERICK E. SMITH  
*Adjutant*



# Administrative



MAJOR CHARLES D. QUERRY  
*Training Center Officer*



LT. JOHN PETSKO  
*Adjutant*



LT. HAROLD A. SCHULTZ  
*School Secretary*



# Military



LT. WM. L. BEER  
*Ass't Training Center Officer*



LT. ROBERT M. LICK  
*Supply Officer*



LT. RICHARD E. HEFLICK  
*Tactical Officer*



LT. PRICE J. PERRILL  
*Mess Officer*



# Academic



**LT. ROBERT W. SPRINGFIELD**  
*Director of Ground Training*



**LT. GREGORY D. PICONE**  
*Assistant Director of Ground Training*



**LT. ANSON A. MARSH**  
*Officer in Charge Radio*



**LT. ABRAHAM H. BURSTEN**  
*Officer in Charge Navigation*



**LT. RUSSELL L. BELQUIST**  
*Officer in Charge Meteorology*



**LT. B. H. BENNETT**



**LT. LEROY H. ROWSE**

*Officer in Charge Aircraft Recognition Officer in Charge Instruments*



# Academic



LT. LAUREN E. SPANGLER  
*Meteorology*



LT. ELRED C. SHIRK  
*Meteorology*



LT. ROLLIN P. WOODWARD  
*Meteorology*



LT. VERNON O. LEASE  
*Meteorology*



LT. JOHN K. MCGARY  
*Meteorology*



LT. RALPH H. PIERCE  
*Meteorology*



LT. MAURICE R. COLSON  
*Navigation*



LT. LOGAN E. HYSMITH  
*Navigation*



LT. JAMES S. MILLIGAN  
*Navigation*



SGT. KENNETH THOMPSON  
*Navigation*



W/O LOYD H. RAYMER  
*Aircraft Recognition*



LT. LEE J. KIETH  
*Radio*



PFC. HARRY EDENS  
*Radio*



# Religion



CAPT. JOSEPH P. COLL  
*Catholic Chaplain*



LT. DAHLGREN E. CASEY  
*Protestant Chaplain*





# Physical Training



LT. GEORGE R. TEBBETTS  
*Physical Training Officer*



LT. COLONEL B. MILLS  
*Ass't Physical Training Officer*



# Medical



MAJOR JOHN B. FORSYTHE  
*Commanding*



LT. COL. PAUL INGLEDUE  
*Dental Officer*

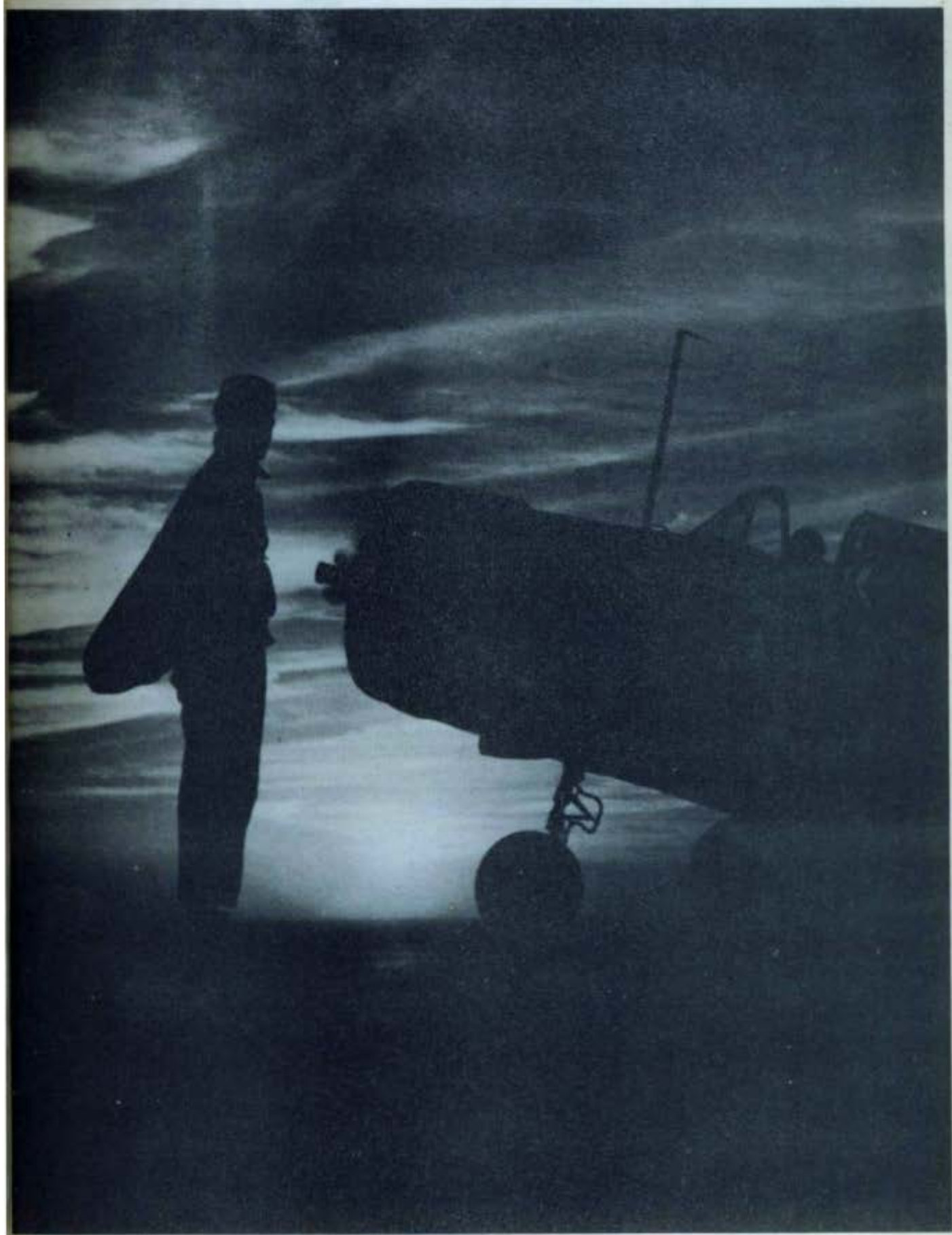


MAJOR NORBERT W. SCHOLLE  
*Surgeon*



CAPT. LELAND S. EVANS







# Group Commanders



CAPT. JOHN H. BURCHFIEL  
*Group I Commander*



MAJOR M. P. EXLINE  
*Group II Commander*



# Squadron Commanders



CAPT. C. E. KESSLER  
*Squadron 2 Commander*



CAPT. R. L. BEHLING  
*Squadron 1 Commander*



CAPT. D. L. HENDERSON  
*Squadron 3 Commander*



CAPT. M. H. BOECK  
*Squadron 4 Commander*



CAPT. D. C. LEOPOLD  
*Squadron 5 Commander*



CAPT. J. S. CONNOR  
*Squadron 6 Commander*



# Squadron One Flight **A**



APT. L. McCLENDON



LT. C. D. SIMPSON



LT. G. F. BARRY



LT. J. MORENO



LT. C. R. WALTER



LT. H. S. WESSNER



LT. K. E. SPRINGBORG



LT. H. C. FARR



LT. G. C. ROBINSON



LT. H. B. FARMER



LT. R. A. SIMMONS



LT. J. F. STEMKA



# Squadron One Flight

**B**



LT. R. L. COX



LT. W. T. MINOR



LT. L. FITZGERALD



LT. R. A. YEAGER



LT. E. F. SMITH



LT. J. E. BENNER



LT. J. H. STOKER



LT. C. A. ARLEDGE



LT. W. H. COURTNEY



LT. L. E. SPROUSE



# Squadron One Flight



CAPT. W. E. RIGGS



LT. C. E. HOUSTON



LT. J. B. MILLER



LT. H. D. SCARB



LT. E. H. AUSTIN



LT. J. M. BENKO



LT. D. J. ROOT



LT. D. G. LEWIS



LT. R. G. WETMORE



LT. H. W. REYNOLDS



LT. I. P. TOWNS



LT. R. G. ADELBE



# Squadron Two Flight **A**



PT. D. A. McKINNON, JR.



LT. H. H. ALLEN



LT. W. R. BRYANT



LT. M. J. LYONS



T. S. H. MEYER



LT. A. FRANK



LT. T. J. GARDNER



LT. A. H. SEALE



LT. R. H. CHAMBERLA



T. J. T. NICHOLSON



LT. T. E. DAVIS



LT. D. E. ULRICH



LT. O. L. BOYER, JR.



# Squadron Two Flight **B**



LT. J. C. SOLBERG



LT. H. D. GILPIN



LT. T. B. BAREFIELD



LT. W. FREEMAN, JR.



LT. A. F. HAMILTON



LT. K. G. HAWK



LT. R. E. GRIFFIN



LT. J. R. COLGIN



LT. S. D. MARETT



LT. M. A. BRAUNGER



LT. J. L. ELLINGER



# Squadron Two Flight



PT. A. C. MURPHY



LT. F. E. SIEGFREID



LT. G. L. RICH



LT. A. P. MANKIN



LT. H. B. RUSSELL



LT. C. F. SCHLEUTER



LT. R. D. HUNGERFORD



LT. F. B. McMASTER



LT. B. D. BADGER



H. E. HYBSKMANN



LT. G. H. SLOVER



LT. S. KOLMAN



LT. H. A. BOWERS



# Squadron Three Flight

**A B C**



CAPT. R. L. BROWN



LT. J. A. ULLSTROM



LT. W. SIMPSON



LT. C. H. ROSE



LT. O. T. SMITH



LT. D. W. SCOTT



LT. J. M. CROSS



LT. L. L. HUCKABAY



LT. H. J. THOMP



LT. L. C. SPORT



LT. J. P. HESTERLY



LT. W. A. McVEY



LT. B. E. STRAY



# Squadron Four Flight

**A B C**



LT. W. G. THOMAS



LT. S. KNOTTS



LT. B. L. HARDY



LT. W. M. MILLER



LT. W. F. SMITH



LT. J. L. RYAN



LT. C. R. LANTZ



LT. S. E. TOWERY



LT. D. L. DRYNAN



LT. E. M. WILLIAMS



LT. A. J. ABERNATHY



LT. C. A. MUTSCHLER



LT. W. J. HEISSERER



LT. E. W. STEINER



# Squadron Five Flight



APT. A. G. MANTHOS



LT. R. L. HOLSOMBACK



LT. R. W. KAUPPILA



LT. C. S. PARKER



LT. L. B. LOGGINS



LT. J. A. BENE



LT. D. S. GREEN



LT. C. A. NEAD



LT. H. A. MALINOSKI



# Squadron Five Flight **B**



LT. J. A. SCOFIELD



LT. J. B. GIDDENS



LT. J. H. LOWE



LT. M. L. JENNINGS



LT. F. W. SCOTT



LT. C. F. ORMSBY



LT. R. E. WELLS



LT. B. MAXWELL



LT. L. H. JONES



LT. J. L. SOLOMON



# Squadron Six Flight



LT. M. F. KEPLER



LT. D. D. DAVIS



LT. M. J. TYLER



T. N. E. CLINKENBEARD



LT. C. E. DIXON



LT. M. B. LILES, JR.



LT. B. M. JENKINS



LT. C. A. PUER



LT. R. L. LARSON



LT. H. F. TRAMPENAU



LT. W. J. CONLON



LT. C. G. GAULKE



LT. C. A. DA



LT. A. L. NELSON



LT. L. V. DECKARD



LT. R. A. SAWYER



LT. F. B. BUCK



LT. A. C. GARG



# Squadron Six Flight **B**



LT. J. L. FOWLER



LT. W. V. SINGEN



LT. A. F. TIMMONS



LT. H. C. FORGASON, JR.



LT. H. S. DEYO



LT. A. W. FITCH



LT. D. P. WHEELWRIGHT



LT. J. HENDRICKS



LT. E. W. LLEWELLYN



LT. J. F. ENGLISH



LT. D. L. YOUNG



LT. G. M. ROME



LT. R. D. SAUER



LT. G. E. NORTON





# *Cadets*

CLASS 44-C





**ADMIRE, R. L.**  
Wichita Falls, Texas



**BILLINGS, R. G.**  
Topeka, Kansas



**ASH, S. J.**  
Des Moines, Iowa



**BAKER, P. W.**  
Moberly, Mo.



**BILODEAU, J. W.**  
Minneapolis, Minn.



**BLACKBURN, W. G.**  
Grand Island, Neb.



**BAKER, R. W.**  
University City, Mo.



**BALOG, J. N.**  
Milwaukee, Wis.



**BLOCK, M.**  
Houston, Texas



**BOKER, V. E.**  
Omaha, Neb.



**BEDFORD, E. G.**  
Columbia, Mo.



**BELL, B. M.**  
Mankato, Minn.



**BORNEMEIER, R. F.**  
Lincoln, Neb.



**BOSCARINA, A.**  
Brooklyn, N. J.



**BENTZ, L. C.**  
Waterloo, Iowa



**BERGGREN, H. W.**  
Morganville, Kansas



**BOSSOM, R. J.**  
Falls City, Neb.



**BOWER, J. M.**  
Colorado Springs, Colo.





**BOWER, R. L.**  
Colorado Springs, Colo.



**CAMPBELL, G. W.**  
Cleveland, Ohio



**BOWMAN, C. H.**  
Topeka, Kansas



**BRADSHAW, H. B., JR.**  
Denver, Colo.



**CASTLE, M. W.**  
Hollywood, Ill.



**CHAMBERLAIN, J.**  
McMahan, Texas



**BROSS, S. R.**  
Wilsco, Kansas



**BRUMMOND, L. D.**  
Demhigh, N. D.



**CHAMBERLAIN, P. M.**  
Temple, Texas



**CHAMBERS, W. E.**  
Swansville, Minn.



**BULLOCK, T. A.**  
Hillsboro, Texas



**BRYAN, P. J.**  
Red Wing, Minn.



**CHAMBLESS, B.**  
Waco, Texas



**CHATHAM, M. E.**  
Seven Sisters, Texas



**BUNDY, E. E.**  
Kell, Ill.



**BURNAM, C. W.**  
Dallas, Texas



**CHITTENDEN, D. R.**  
St. Louis, Mo.



**CLARK, R. C.**  
Chicago, Ill.





CLARK, W. H.  
Hammond, Ind.



CURLEY, R. T.  
Newton, Mass.



COCHRAN, R. F.  
Rapid City, Mich.



COLVIN, O. V.  
Groves, Texas



DAKAN, W. R.  
Parsons, Kansas



DARLINGTON, P.  
New York, N. Y.



CONNERY, J. J.  
Chicago, Ill.



COVIC, D. M.  
Chadron, Neb.



DAVIS, E. L.  
St. Cloud, Minn.



DAVIS, J. E.  
Rosedale, N. Y.



CREER, M. B.  
Salt Lake, Utah



CROMWELL, R. C.  
Akron, Ohio



DAVIS, J. W.  
Dallas, Texas



DAVIS, R. S.  
Fairmount, Ill.



CROOK, J. A., JR.  
Clinton, Iowa



CUMMINS, F. J.  
Durango, Colo.



DELANO, C. G.  
Denver, Colo.

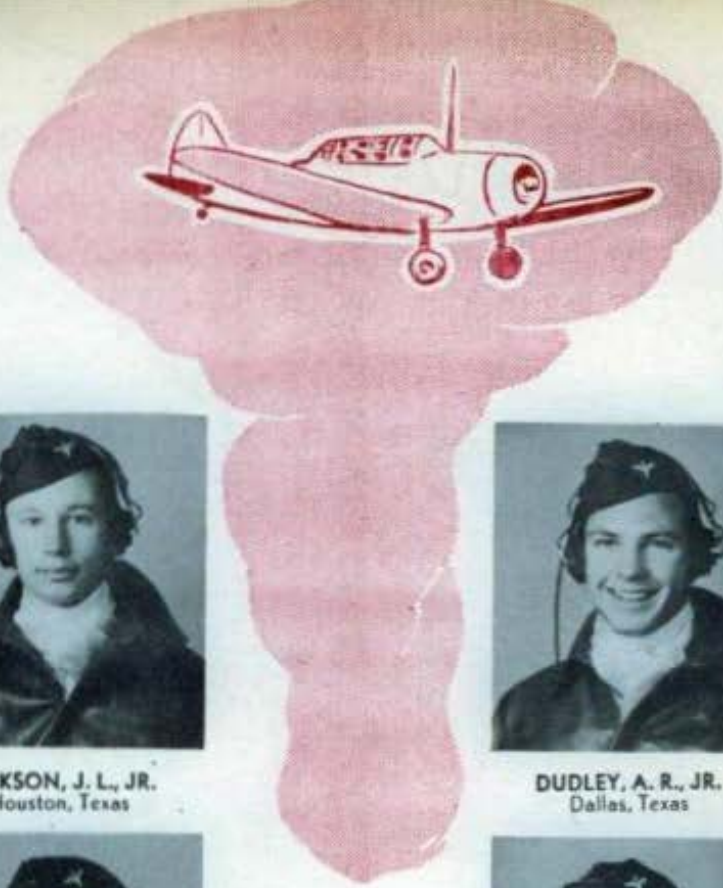


DENNIS, C. W., JR.  
Needham, Mass.





DENNY, H. B.  
San Antonio, Texas



DRYDEN, R. G.  
Ottawa, Kansas



DESPAIN, A. L., JR.  
Denver, Colo.



DICKSON, J. L., JR.  
Houston, Texas



DUDLEY, A. R., JR.  
Dallas, Texas



DUNBAR, R. F.  
Merced, Calif.



DOMINY, W. W., JR.  
Tehuacana, Texas



DONNELLY, J. S.  
Grafton, N. D.



DUNCAN, R. W.  
Harlingen, Texas



DUNDON, L. J.  
Glen Ridge, N. J.



DOSS, H. W., JR.  
Desloge, Mo.



DRAKE, R. E.  
North Field, Minn.



DUNHAM, J. S.  
San Antonio, Texas



DUNHAM, M. F.  
Kansas City, Mo.



DRESCHER, R. M.  
Milwaukee, Minn.



DRIESLER, M. M.  
Danville, Ky.



DUNN, W. K.  
Denver, Colo.



DUNWOODY, J. K.  
Ogallala, Neb.





DUPUY, G. K.  
Lufkin, Texas



ERBEN, H.  
San Antonio, Texas



DURGA, L. B.  
Puyallup, Wash.



DUSTMAN, R. F.  
Westport, Conn.



EVANS, A. J., JR.  
Valley Falls, Kan.



EVANS, C. V.  
Louisville, Ky.



ECHTERNACHT, N. G.  
Boulder, Colo.



EIDE, E.  
Spooner, Minn.



EVANS, P. V.  
Denver, Colo.



FABER, B. R.  
Hillside, N. J.



ELLIOTT, D. G.  
Kansas City, Mo.



ENDRES, E. G.  
Rapid City, S. D.



FARRINGTON, R., JR.  
St. Louis, Mo.



FARRIS, R. J.  
Fargo, N. D.



ENGEN, D. D.  
Sioux Falls, S. D.



ENGRAM, T. B.  
Johnson City, Ill.



FAULKNER, J. C.  
Keene, N. H.



FAY, M. J.  
Anita, Iowa





FEDERER, J.  
Sheboygan, Wis.



FLINT, B. M.  
Viborg, S. D.



FINCH, R. V.  
Medford, Oregon



FINK, A. S.  
Memphis, Tenn.



FLOREA, B. J.  
Columbia, Mo.



FLOREN, C. C.  
Kerkhoven, Minn.



FINK, W. A.  
York, Penn.



FISH, D. F.  
Lime Springs, Iowa



FLOWER, L. M.  
Arvada, Colo.



FORSTER, P. F.  
Purdy, Mo.



FISHER, B. J.  
Danbury, Iowa



FITZGERALD, E. JR.  
Perry, Iowa



FOSTER, C. H.  
Cleveland, Ohio



FOULK, R. J.  
Adrain, Mich.



FLANAGAN, R. J.  
Alexandria, Minn.



FLEMING, R. L.  
Dayton, Ohio



FOUST, J. C.  
Temple, Texas



FRANCEY, R. G.  
Milwaukee, Wis.





FRANKE, P. R., JR.  
Moose, Wyo.



GANN, B. R.  
Denton, Texas



FREDERICK, R. O.  
St. Louis, Mo.



FREEBORN, A. W.  
Sisseton, S. D.



GARFIELD, J. R.  
Cambridge, Mass.



GARNEY, P. W.  
Houston, Texas



FRENCH, W. R., JR.  
Stromsburg, Neb.



FRIEND, W. F.  
Sioux City, Iowa



GARRETT, P. E.  
Houston, Texas



GASSTER, M.  
Brookline, Mass.



FRIESE, R. G.  
Fargo, S. D.



FRIZZELL, R.  
New York, N. Y.



GELLER, F. Z.  
Evanston, Wyo.



GEISSMAN, W.  
Flushing, N. Y.



FULLER, W. J.  
Battle Creek, Mich.



GALNY, G. H., Jr.  
Houston, Texas



GEORGE, A., JR.  
Port Arthur, Texas



GERBER, J. A.  
Idalia, Colo.





**GEREN, L. F.**  
Dallas, Texas



**GLEASON, J. J.**  
Denver, Colo.



**GERTSMA, M. B.**  
Lynnville, Iowa



**GESKE, P. O.**  
Portland, Oregon



**GLEMBY, K. L.**  
Brooklyn, N. Y.



**GLENN, E. J., JR.**  
Blooming Grove, Ill.



**GILBERT, D. C.**  
Cherokee, Iowa



**GIBSON, A. C.**  
Fort Worth, Texas



**GLOCK, W. L.**  
Pittsburgh, Pa.



**GOBLE, W., JR.**  
Portland, Oregon



**GILMORE, J. W.**  
St. Paul, Minn.



**GIORDANO, S.**  
New York, N. Y.



**GOCKENBACH, R. J.**  
Chicago, Ill.



**GODSMAN, M.**  
Denver, Colo.



**GITTINGS, J. R.**  
Louisville, Ky.



**GLANTZ, W. E.**  
Burlington, Iowa



**GOLDSTEIN, R. J.**  
Houston, Texas



**GOOD, D. E.**  
Denver, Colo.





**GOODMAN, L. L.**  
Bronx, N. Y.



**GREGG, M.**  
Kansas City, Kan.



**GOODRICH, J. S.**  
Lake Charles, La.



**GORE, J.**  
Beaumont, Texas



**GRICE, J. C.**  
Mulberry, Ind.



**GRIDLEY, J. N., JR.**  
Biggsville, Ill.



**GOSS, L. A., JR.**  
Colorado Springs, Colo.



**GOSWICK, T. F.**  
Clarkdale, Arizona



**GRIFFITH, D. R.**  
Hammond, Ind.



**GRINDE, A. D.**  
Grand Rapid, Minn.



**GOWEY, P. E., JR.**  
Seattle, Wash.



**GRAMLEY, W. E., JR.**  
Plano, Ill.



**GROBE, J. D.**  
Aspinwall, Pa.



**GROSS, H. L.**  
Cincinnati, Ohio



**GRAY, D. V., JR.**  
Paris, Texas



**GREGG, H. S.**  
New York, N. Y.



**GROSSWEILER, C. W.**  
Pekin, Ill.



**GROTE, R. H.**  
Dayton, Ohio





**GRUNDMAN, V. L.**  
Vincennes, Ind.



**HAILEY, J. I.**  
Batavia, Ill. IAN Du



**GUIOU, W. R.**  
Grand Island, Neb.



**GULL, O.**  
Woods Cross, Utah



**HALEY, R. L.**  
Minot, N. D.



**HALL, C. D.**  
Wilmette, Ill.



**GUNNER, D. M.**  
Minneapolis, Minn.



**HAACK, F. L.**  
New York, N. Y.



**HALL, C. R.**  
Punxsutawney, Pa.



**HALLMAN, D. W.**  
Hazleton, Pa.



**HAASE, D. B.**  
Racine, Wis.



**HAGEN, P. E.**  
Denver, Colo.



**HALLMARK, N. D.**  
Slaton, Texas



**HAMILTON, E. H.**  
Kansas City, Mo.



**HAGGARD, W. A.**  
Clemville, Texas



**HAGGARD, W. R., JR.**  
Fort Worth, Texas



**HAMILTON, R. S.**  
Reynoldsburg, Ohio



**HANSON, L. C.**  
San Francisco, Ca





HANSON, M. G.  
Duluth, Minn.



HARTNEY, F. B., JR.  
New Orleans, La.



HARBERT, P. E.  
Park Ridge, Ill.



HARDIN, L. D.  
Gunnison, Colo.



HARTZELL, C. E., JR.  
Erie, Pa.



HASSETT, F. W.  
Pittsburgh, Pa.



HARGROVE, H. C.  
Trinidad, Colo.



HARKISON, T. S.  
Sioux Falls, S. D.



HAUPT, I.  
Brooklyn, N. Y.



HAWKINS, S. R.  
Dallas, Texas



HARNEY, V. C.  
Carbon, Ind.



HARRIS, G. P.  
Oak Park, Ill.



HAYWOOD, G. H.  
Marquette, Kan.



HEATH, R. V., JR.  
New York, N. Y.



HARTLEY, B. R.  
Mait, Texas



HARTMAN, L. H.  
Elysburg, Pa.



HEDRICK, W. O.  
Springfield, Ill.



HEIDEN, M. W.  
York, Neb.





HEINTZ, R. W.  
Chicago, Ill.



HILDEBRAND, L.  
Hamilton, Ill.



HENSEL, H. L.  
Shawnee, Okla.



HENSLEY, H. M.  
Midland, Texas



HITT, C. R.  
Dallas, Texas



HERMELIN, A. B.  
St. Louis, Mo.



HERRING, W. E.  
McGregor, Texas



HOBAN, J. E.  
Waco, Texas



HOECK, W. J.  
Sioux City, Iowa



HERRINGTON, G. E.  
Pittsburgh, Pa.



HESS, A. C.  
Cadiz, Ohio



HOEFLEIN, R. W.  
Cincinnati, Ohio



HODOVAL, E. A.  
Cicero, Ill.



HIGDON, C. M.  
Ottumwa, Iowa



HILBERT, M. D.  
Verona, Pa.



HOERTER, G. J.  
Louisville, Ky.



HOGUE, C. D.  
Philadelphia, Pa.





HOLBROOK, J. V.  
Indianapolis, Ind.



HOMSEY, J. J.  
Janesville, Wis.



HOLDERBAUM, A. J.  
Huntington, Ind.



HOLEWINSKI, A. J.  
Pittsburgh, Pa.



HONHOLD, C. W.  
Sewickley, Pa.



HOOPER, M. R.  
Anderson, Ind.



HOLLADAY, H. M., JR.  
Midian, Kan.



HOLLAND, H. E., JR.  
Cantonsville, Md.



HOOVER, D. A.  
Hunlock Creek, Pa.



HOPKINS, J. T., JR.  
Washington, D. C.



HOLLAR, C. E.  
Singers Glen, Va.



HOLMAN, W. M.  
Albuquerque, N. M.



HORN, G. M.  
Carby, Pa.



HORVATH, G. C.  
Irwin, Pa.



HOLSTEIN, W. F., JR.  
Mt. Lakes, N. J.



HOLT, L. A.  
Apex, N. C.



HOUGLUM, A. J.  
Perley, Minn.



HOYDE, C. A.  
Pittsburgh, Pa.





HOWARD, T. C.  
Dallas, Texas



HUTTO, R. L.  
Natches, Miss.



HOWELL, H. D.  
Tulsa, Okla.



HUDSON, H. S., JR.  
Austin, Texas



INKS, L. E.  
Battle Creek, Mich.



INNOCENZI, A. J.  
Arnold, Pa.



HUEBNER, W. M.  
Strawberry Point, Iowa



HUEY, H. R.  
Denver, Colo.



IRONS, V. E.  
Newtonville, Mass.



JACKSON, M. L., JR.  
Chicago, Ill.



HUFFMAN, W. I.  
Dearborn, Mo.



HULME, L. L.  
Waco, Texas



JACOBSON, W. V.  
Hixton, Wis.



JAGITSCH, R. E.  
Springfield, Ill.



HUMPHREYS, P. C.  
 Fargo, N. D.



HURLBUT, H. D.  
Park Ridge, Ill.



JAMES, R. H.  
Sacramento, Calif.



JAMISON, E. O.  
Visalia, Calif.





JAN, E. L.  
Sealy, Texas



KABCENEL, M.  
Jamaica, N. Y.



JOHNSON, C. K.  
Indianola, Miss.



JOHNSON, E. G.  
St. Paul, Minn.



KAHL, V. B.  
Troy, Ohio



KAISER, W. G.  
Edon, Ohio



JOHNSTON, B. L.  
Pangburn, Ark.



JOHNSTON, D. A.  
Detroit, Mich.



KAYE, F. T.  
Lebanon, Ky.



KEENEY, T. H.  
Belton, Mo.



JONES, D. E.  
Goodman, Mo.



JONES, H. A.  
Shawnee, Okla.



KELLER, G. E.  
Clifton, Colo.



KELLER, W.  
Racine, Wis.



JOYCE, B. A.  
Houston, Texas



JULIAN, A. A., JR.  
Roan Mt., Tenn.



KEMPPPEL, D. E.  
Akron, Ohio

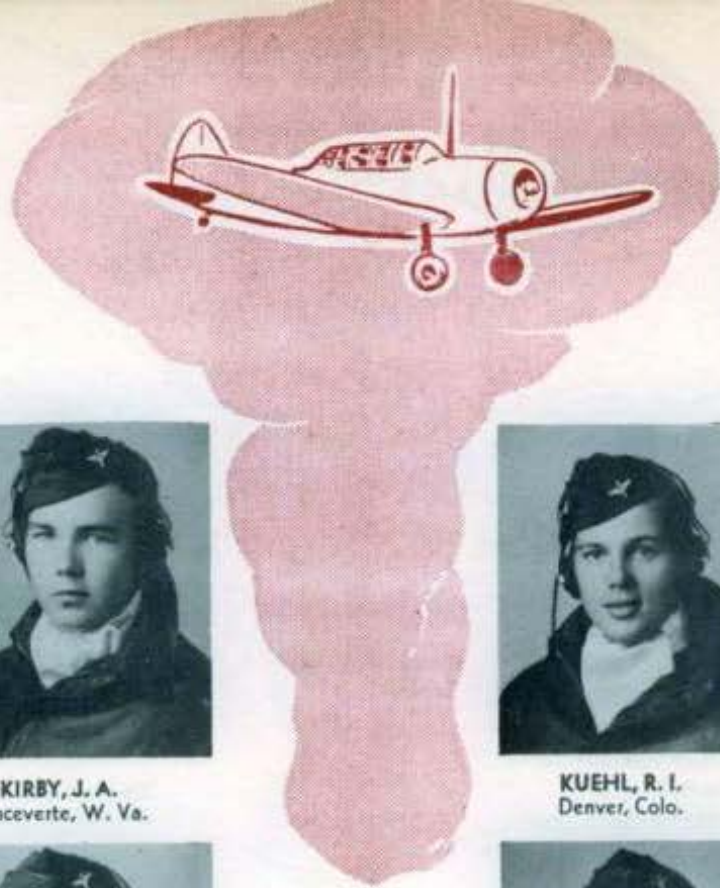


KENNEDAY, J. W.  
Winter Garden, Fla.





**KERN, D. E.**  
Spearman, Texas



**KROGH, M. E. LA**  
Albuquerque, N.



**KILBURN, C. L.**  
Flint, Mich



**KIRBY, J. A.**  
Ronceverte, W. Va.



**KUEHL, R. I.**  
Denver, Colo.



**KUENTZ, F. J.**  
Dallas, Texas



**KITCH, W. H.**  
Indianapolis, Ind.



**KLEFFEN, C. G.**  
Milwaukee, Wis.



**KUHLMAN, R. F.**  
Lewisville, Tenn.



**KYES, B. W.**  
Eau Claire, Wis.



**KLEMOLA, R. B.**  
Evanston, Ill.



**KNAUR, J. W.**  
Denison, Texas



**LAKE, N. R.**  
St. Paul, Minn.



**LAMB, C. A.**  
Albany, Ore.



**KORKOWSKI, D. J.**  
Brandon, Minn.



**KOVAR, W. C.**  
LaGrange, Ill.



**LAMP, C. D.**  
St. Clairsville, Ohio



**LANGSTON, A. J.**  
Watson, Mo.





LANGSTON, J. T., JR.  
Houston, Texas



LEIGHTY, R. W.  
Fort Wayne, Ind.



LANTZ, G. R.  
New Palestine, Ind.



LARSEN, K. W.  
Elkhorn, Iowa



LEITHAUSER, R. C.  
Detroit, Mich.



LENTZ, B. J.  
Dover, Pa.



LARSON, P. A.  
Chicago, Ill.



LAUX, L. R.  
Douglas, Arizona



LEONHARD, E. M.  
South Bend, Ind.



LESLEY, H., JR.  
Wichita Falls, Texas



LAWLEY, B. F., JR.  
Bryson, Texas



LAWSON, M. A.  
Paris, Texas



LESNEY, J. P.  
Minneapolis, Minn.



LINDH, F. R.  
Philadelphia, Pa.



LEGGETT, C. E.  
Chicago, Ill.



LEGGETT, R. G.  
Ann Arbor, Mich.



LUEBKE, H. W.  
Stuttgart, Ark.



LUNDBERG, J. R.  
Albany, Calif.





McLAUGHERTY, D. H.  
Charleston, W. Va.



MATTAX, T. E.  
Tulsa, Okla.



McDOWELL, L. S.  
Austin, Texas



McGEE, T. W.  
Dallas, Texas



MATTHEWS, G. E., JR.  
Fayetteville, N. C.



MEADE, J. W.  
Honey Grove, Tex



McKINNEY, M. R.  
Greenville, Texas



McLEAN, H. B.  
University Heights, Ohio



MERCING, E. L.  
North Little Rock, Ark.



MILLER, R. M.  
Goshen, Ind.



McMULLAN, B. M., JR.  
Smackover, Ark.



McNABB, H. W., JR.  
Waco, Texas



MILLIRON, E. E.  
Duke Center, Pa.



MLYNARSKI, L. I.  
Milwaukee, Wis.



MacLEOD, B. M.  
Long Beach, Calif.



MATHIEU, M. S.  
Tulsa, Okla.



MONTGOMERY, R. L.  
Oklahoma City, Okla.



MORRISON, G. W.  
Chillicothe, Texas





MOWRY, W. F.  
Clanton, Pa.



OLSON, L. S.  
Chicago, Ill.



MYERS, D. N.  
Harrisburg, Pa.



NEIDLINGER, O. R.  
Plymouth, Ind.



OMO, C. B.  
Houston, Texas



O'NEILL, R. B.  
Pittsburgh, Pa.



NELSON, J. O.  
Oklahoma City, Okla.



NEWBERG, R. E.  
Des Moines, Iowa



PALOPOLI, A. A.  
Pittsburgh, Pa.



PANTOLIANO, T. D.  
Vicksburg, Miss.



NICADA, J. E.  
Ford City, Pa.



NIELSEN, H. W.  
Omaha, Neb.



PATES, R. H.  
St. Paul, Minn.



PEDERSON, F. H.  
Benson, Minn.



O'BRIEN, C. R., JR.  
Independence, Mo.



O'CONNELL, C. J.  
Houston, Texas



PEIL, V. W., JR.  
Houston, Texas



PELTO, J. A.  
Virginia, Minn.





PETERSON, C. A.  
Eric, Pa.



QUINN, J. A.  
Adel, Iowa



PETTEY, J. E.  
Nacogdoches, Texas



PFANTZ, V. C.  
State Center, Iowa



SCHWARTZ, D.  
Richmondville, N. Y.



SHANKS, L. H.  
Abilene, Texas



PFEUFFER, H. J., JR.  
Pontiac, Mich.



PIROTTE, J. H.  
Princeton, N. J.



SPENCER, A. H.  
Owego, N. Y.



PITTALA, V. R.  
Brooklyn, N. Y.



POSS, R. L.  
Eau Clair, Wis.



TAYLOR, W. J.  
Manhattan, Kansas



PUSATERI, M. J.  
E. Liverpool, Ohio



QUIGLEY, T. J.  
Mt. Carmel, Pa.



VAN PELT, W. L.  
Salina, Kansas



WALL, J. W.  
Indianapolis, Ind.





WEEDEN, G. D.  
Guyton, Okla.



WEIDMAN, W. R.  
Pana, Ill.



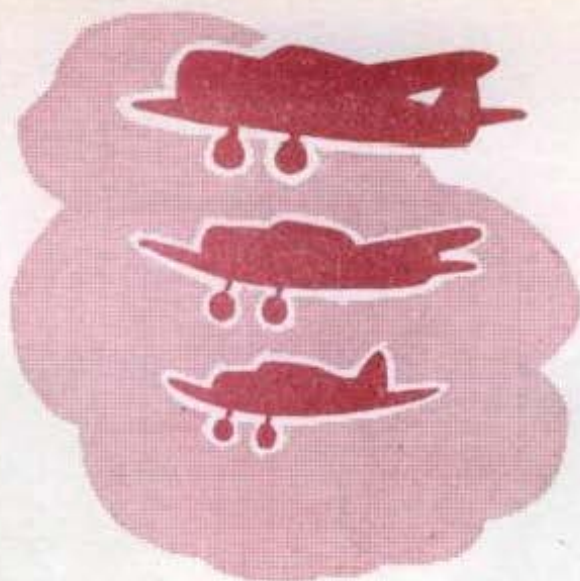
WILKAT, A. O.  
St. Louis, Mo.



WESTON, G. L.  
Pittsburgh, Pa.



WESTOVER, D. A., JR.  
Hastings, Pa.



WOOD, C. A.  
Bristol, Colo.



WOODS, J. D.  
Pella, Iowa



WOODY, C. L., JR.  
Bassett, Va.



YOUNG, P. R.  
Sterling, Ill.







ALBUQUERQUE, L. J.  
Belem do Para, Brazil



MARCONDES, J. C.  
Rio de Janeiro, Brazil



BATISTA, R. F.  
Castro-Parana, Brazil



CASTRO, T. T.



MELIN FILHO, A. A.



PIMENTEL, C. M. T.  
Santos, Brazil



BOTELHO, H. B.  
Rio de Janeiro, Brazil



FILGUEIRAS, C.  
Rio da Costa, Brazil



ROZA, P. C.



XAVIER, J. P.  
Parana, Brazil



CARDOSO, H.  
Rio de Janeiro, Brazil



GOMES, J. A. D.  
Rio de Janeiro, Brazil



HETTINGER, W. P.



HUTTO, W. B.



GUIMARAES, W. R. G.  
Sao Paulo, Brazil



CZARK, S. R.



HANSEN, J. H.





Hess, S/O, L. A., JR.  
Evansville, Ind.



McDONALD, S/O, W. E.  
Houston, Texas



HICKMAN, S/O, J. H.  
Wahachic, Texas



HOGAN, S/O, J. V.  
Niagara Falls, N. Y.



MORAN, S/O, C. K.  
Belton, Texas



REYNOLDS, S/O, R. R.  
San Antonio, Texas



HOLDER, S/O, W. W., JR.  
Odessa, Texas



HORD, S/O, C. E.  
Clinton, Mo.



SWAN, S/O, D. A.  
Oakland, Calif.



VAN ZANDT, S/O, R. W.  
Gulfport, Miss.



KLOSE, S/O, B. B.  
Escondido, Calif.



KRAMER, S/O, G. M., JR.  
Phoenix, Ariz.



VISSER, S/O, B. F.  
Bellaire, N. Y.



WAKEFIELD, S/O, J. F.  
Winnetka, N. Y.



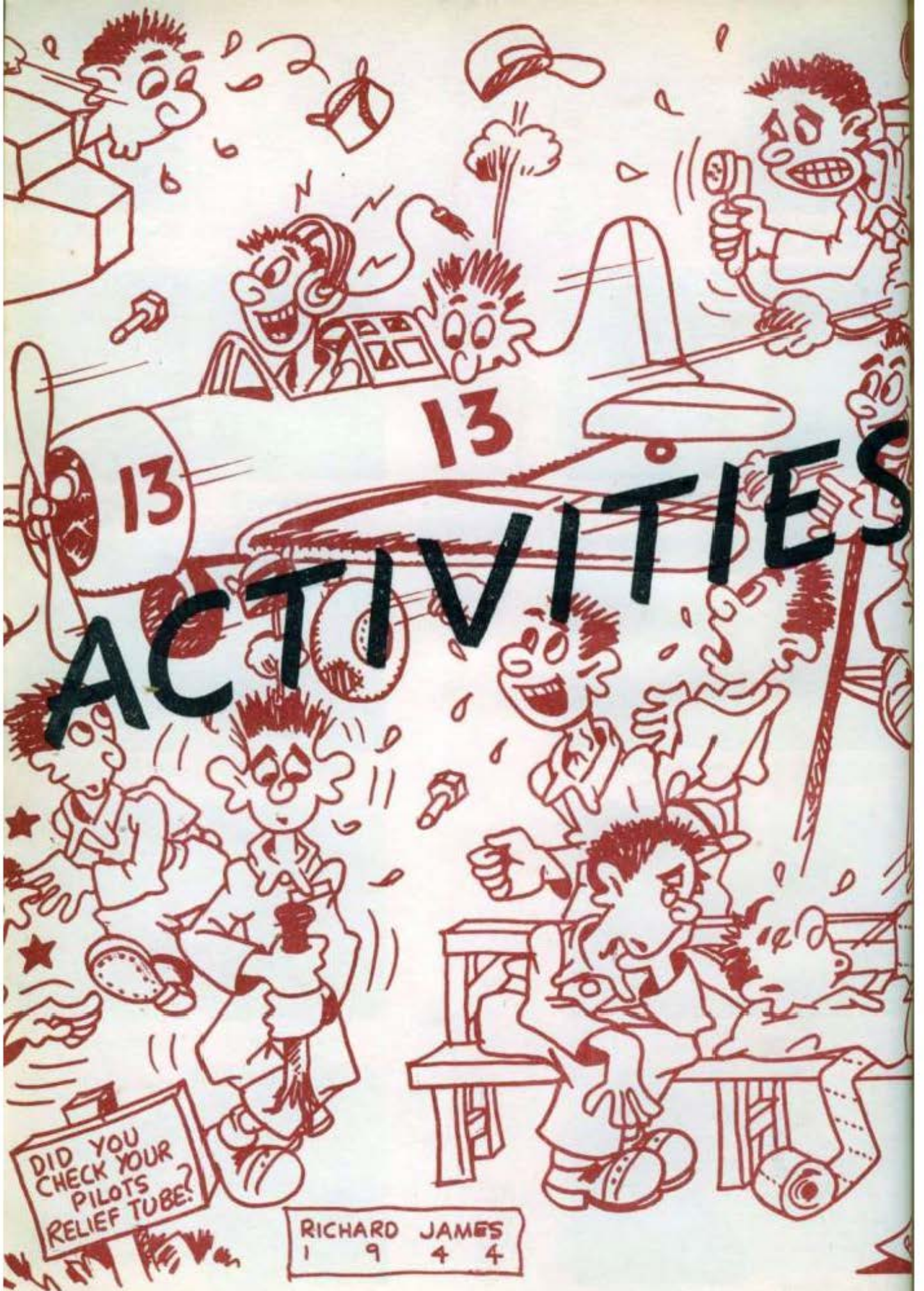
LEWIS, S/O, W. C.  
Birmingham, Ala.



WALLACE, S/O, W. F.  
Fresno, Calif.





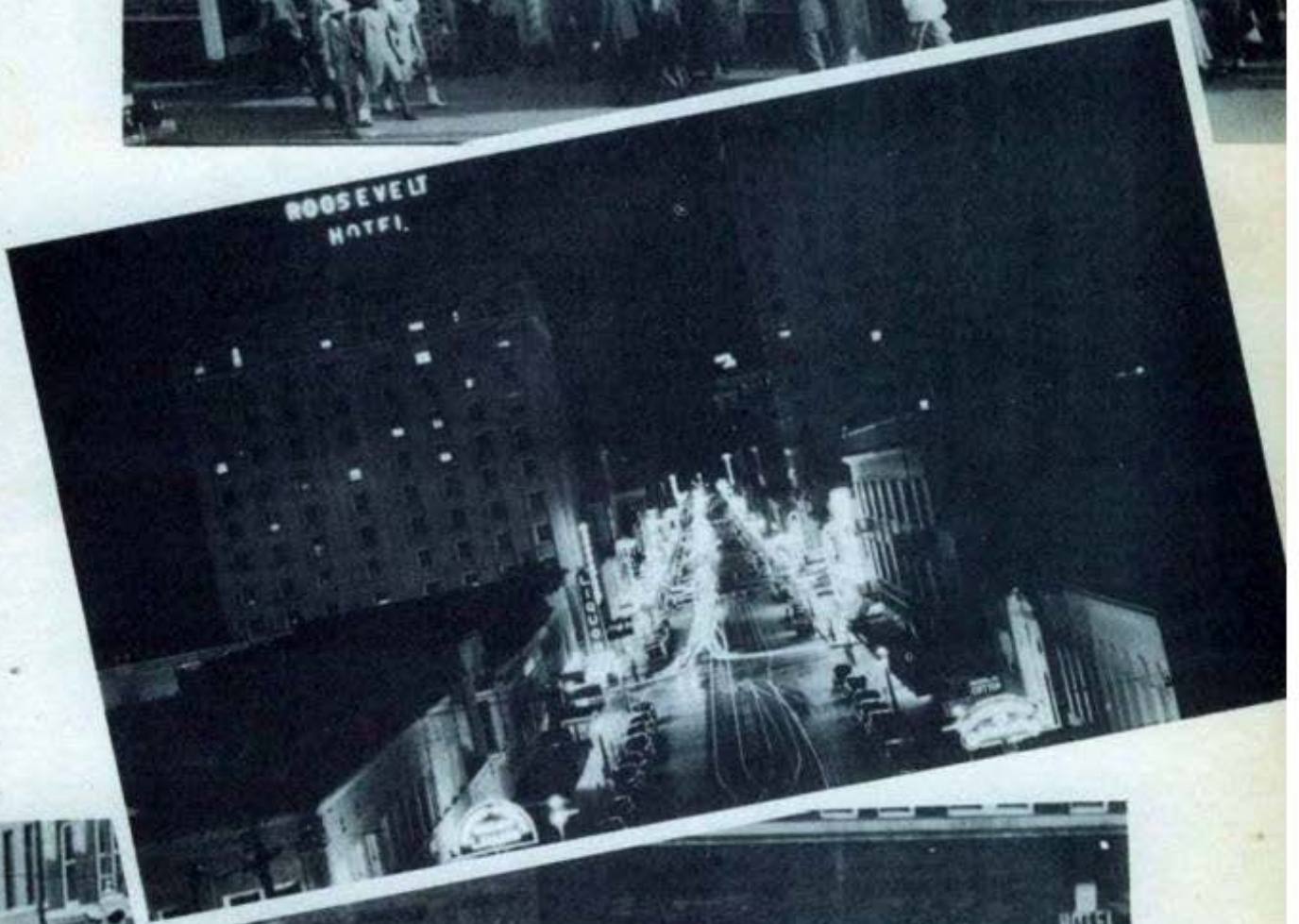
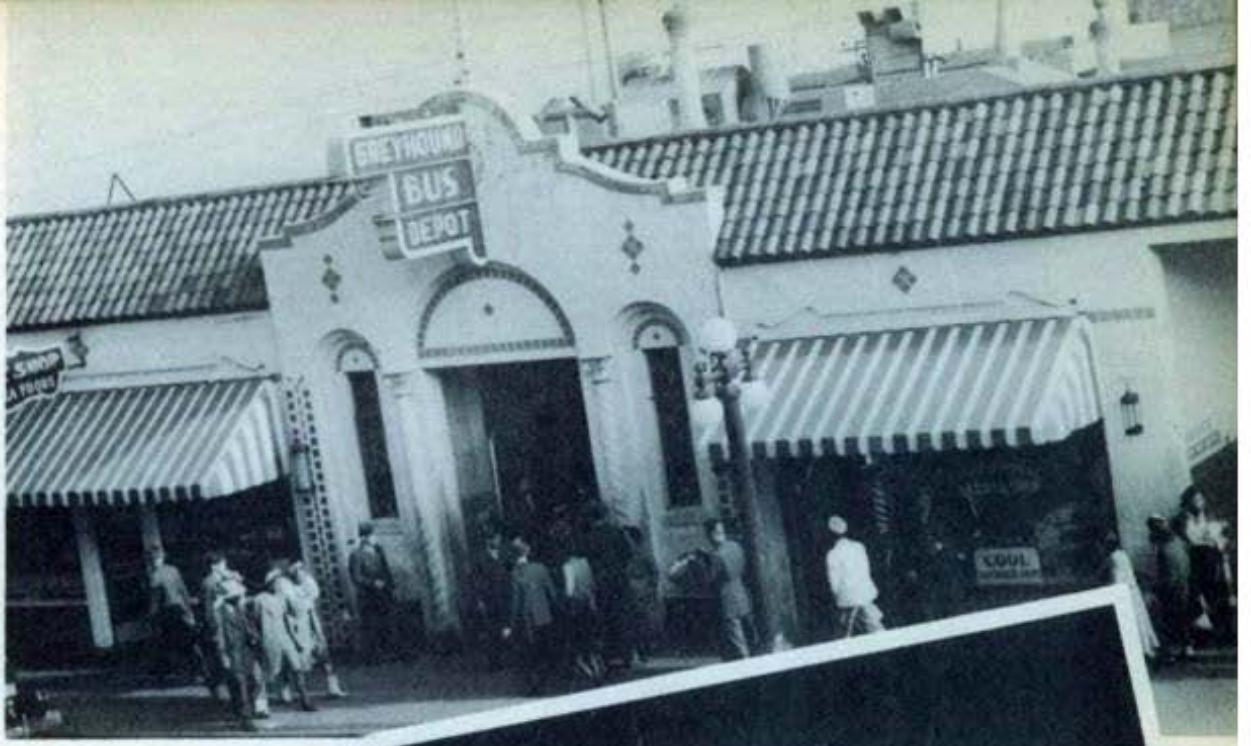


# ACTIVITIES

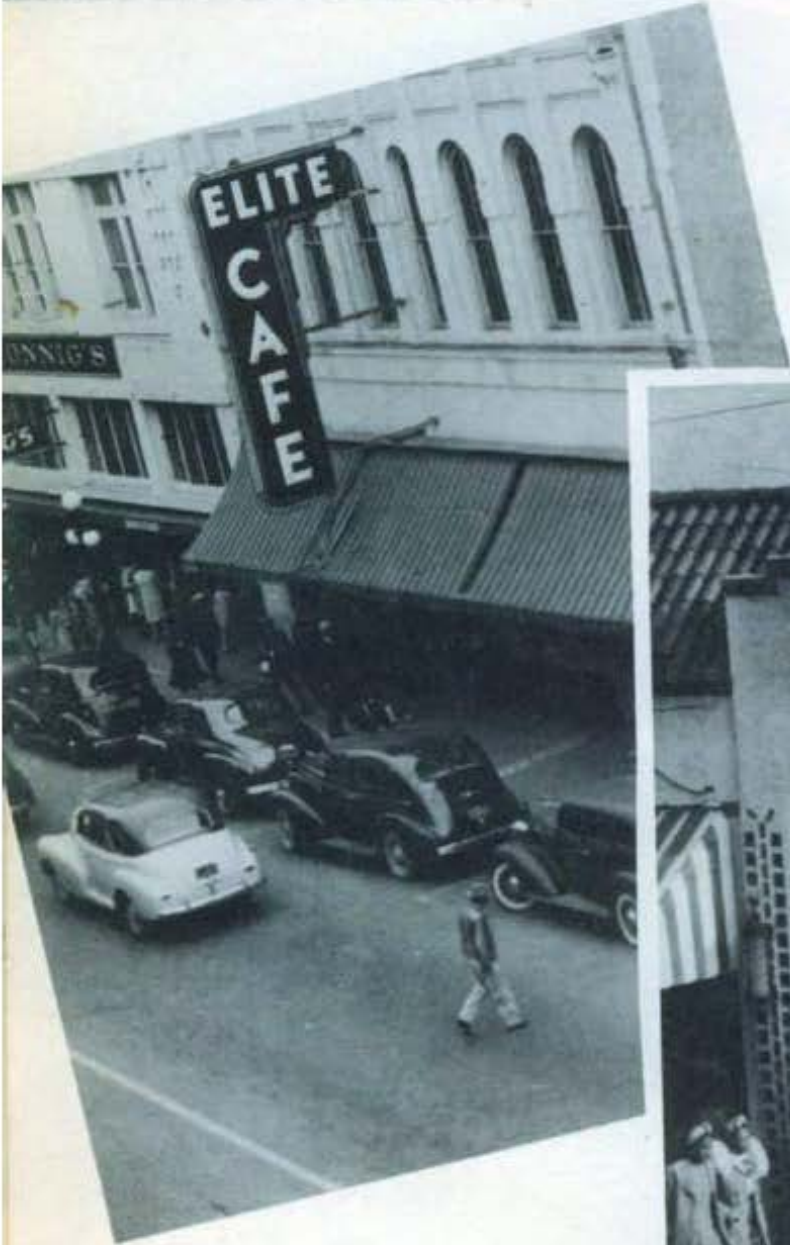
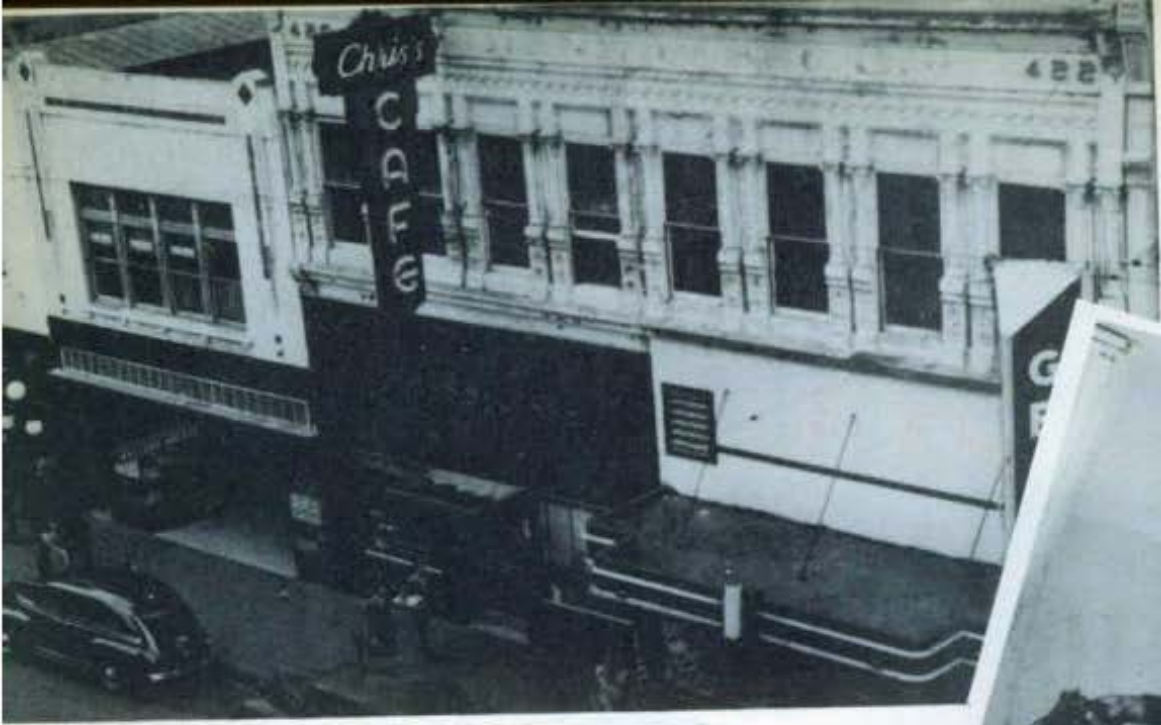
DID YOU CHECK YOUR PILOTS RELIEF TUBE?

RICHARD JAMES  
1 9 4 4











































# THE BEE-TEE

## Class 44-C

### *Editors*

RICHARD H. JAMES

MARSHALL A. LAWSON

DONALD B. HAASE





*Comments from Friends*



# Page Missing

This page was inserted to keep facing pages together.





RICHARD JAMES  
1 9 4 4

"JUST CALL ME  
BUSTER"



