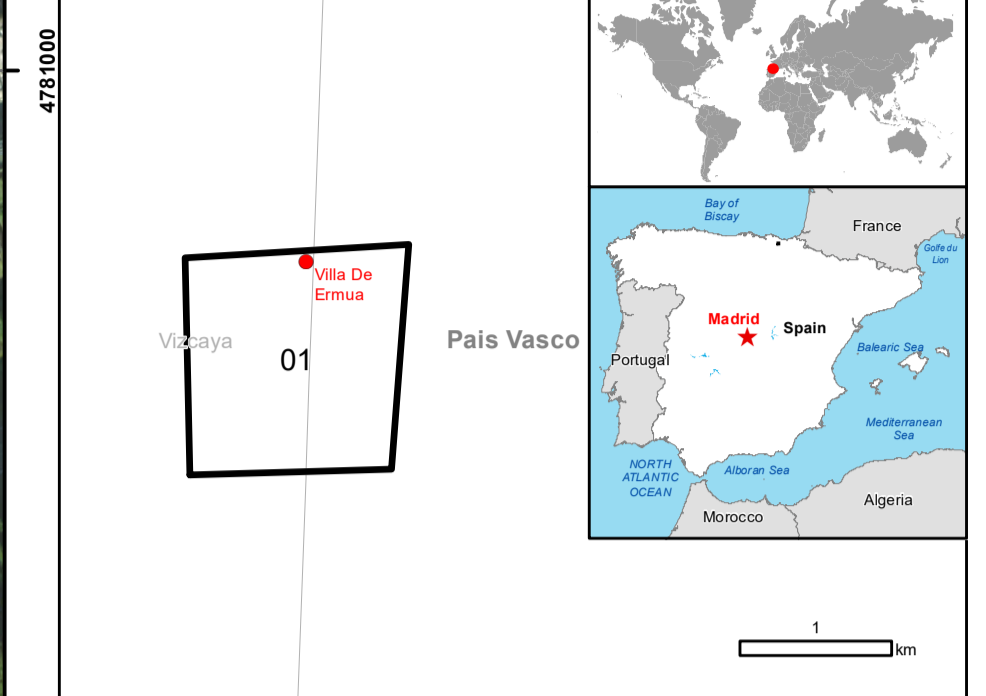


## Ermua - SPAIN

### Other - Situation as of 09/02/2020

#### Delineation - Overview map 01



#### Cartographic Information

1:3000 Full color A1, 200 dpi resolution  
 0 0.05 0.1 0.2 km

Grid: WGS 1984 UTM Zone 30N map coordinate system  
 Tick marks: WGS 84 geographical coordinate system

#### Legend

- |                           |  |  |
|---------------------------|--|--|
| <b>Crisis Information</b> | <b>Hydrography</b>                               | <b>Transportation</b>                                    |
| Road block / interruption | River  | Highway  |
| Landslide                 | Stream   | Primary Road   |
| Area of Interest          | Heavy industrial plant, not elsewhere classified | Secondary Road   |
| Placename                 | Dump Site  | Local Road   |
| Built-Up Area             |  | Cart Track   |
|                           |  | Long-distance railway                                    |
|                           |  | <b>Physiography</b><br>Features available in vector data |

Consequences within the AOI		Unit of measurement	Affected	Total in AOI
Affected area		ha	8.5	
Road blocks		No	11	
Landslide		ha	0	8.5
Estimated population		Number of inhabitants	0	2243
Settlements	Residential	ha	0.0	2.0
	Non-residential	ha	0.0	0.5
Transportation	Highway	km	0.1	4.4
	Primary Road	km	0.0	1.2
	Secondary Road	km	0.0	0.5
	Local Road	km	0.0	2.8
	Cart Track	km	0.6	9.0
	Long-distance railway	km	0.0	1.0
Facilities	Heavy industrial plants, not elsewhere classified	ha	0.0	1.1
	Dump site	ha	7.9	31.7

#### Map Information

On Thursday 6 February 2020, a dumping site collapsed near Ermua in the Basque Country of Spain leading to the disappearance of two workers. The complexity of the search and rescue operations is due to the large quantity, instability and type of residues contained in the landfill. From a safety point of view, an up-to-date assessment of the situation in the field is needed.

The present map shows the landslide delineation in the area of Ermua, in the Basque Country (Spain). The thematic layer has been derived from post-event satellite image by means of visual interpretation. The estimated geometric accuracy (RMSE) is 2.5 m or better, from native positional accuracy of the background satellite image.

#### Relevant date records (UTC)

Event	Date	Description
Situation as of	09/02/2020 11:21	
Activation	08/02/2020 21:47	Map production

#### Data sources

Pre-event image: ESRI World Imagery © DigitalGlobe (acquired on 15/10/2017, GSD 0.25 m, approx. 0% cloud coverage in Aoi).  
 Post-event image: WorldView-2 © DigitalGlobe Digital Globe, Inc. (2020), (acquired on 09/02/2020 at 11:21 UTC, GSD 0.5 m, approx. 0% cloud coverage in Aoi, 1.69° off-nadir angle), provided under COPERNICUS by the European Union, ESA and European Space Imaging, all rights reserved.  
 Base vector layers: OpenStreetMap © OpenStreetMap contributors, Wikimedia.org, GeoNames 2015, Global Administrative Areas (2012), refined by the producer.  
 Inset maps: JRC 2013, EuroBoundaryMap 2017 © EuroGeographics, Natural Earth 2012, CCM River DB © EUJRC2007, GeoNames 2013.  
 Population data: GHS Population Grid © European Commission, 2015  
 https://data.europa.eu/89h/jrc-ghs-pop\_gpw4\_globe\_r2015a.  
 Digital Elevation Model: EU-DEM (25 m)

#### Disclaimer

Products elaborated in this Copernicus EMS Rapid Mapping activity are realized to the best of our ability, within a very short time frame, optimising the available data and information. All geographic information has limitations due to scale, resolution, date and interpretation of the original sources. No liability concerning the contents or the use thereof is assumed by the producer and by the European Union.  
 Delivery formats are Layered Geospatial PDF, GeoPEG and vector (ESRI shapefiles, Google Earth KML, GeoJSON).  
 Map produced by SIRS released by SERTIT (ODO).  
 For the latest version of this map and related products visit  
<https://emergency.copernicus.eu/EMSR425>  
 jrc-ems-rapidmapping@ec.europa.eu  
 © European Union  
 For full Copyright notice visit <https://emergency.copernicus.eu/mapping/ems/site-copernicus-ems-mapping-portal>