

139
297

編郎次文藤小

圖全鮮朝



DR. KOTO'S
GENERAL MAP
OF
KOREA.



東京
MARUYA & CO., LTD.
MARUYA

9
7

139
297

COMPANION-BOOK TO THIS MAP

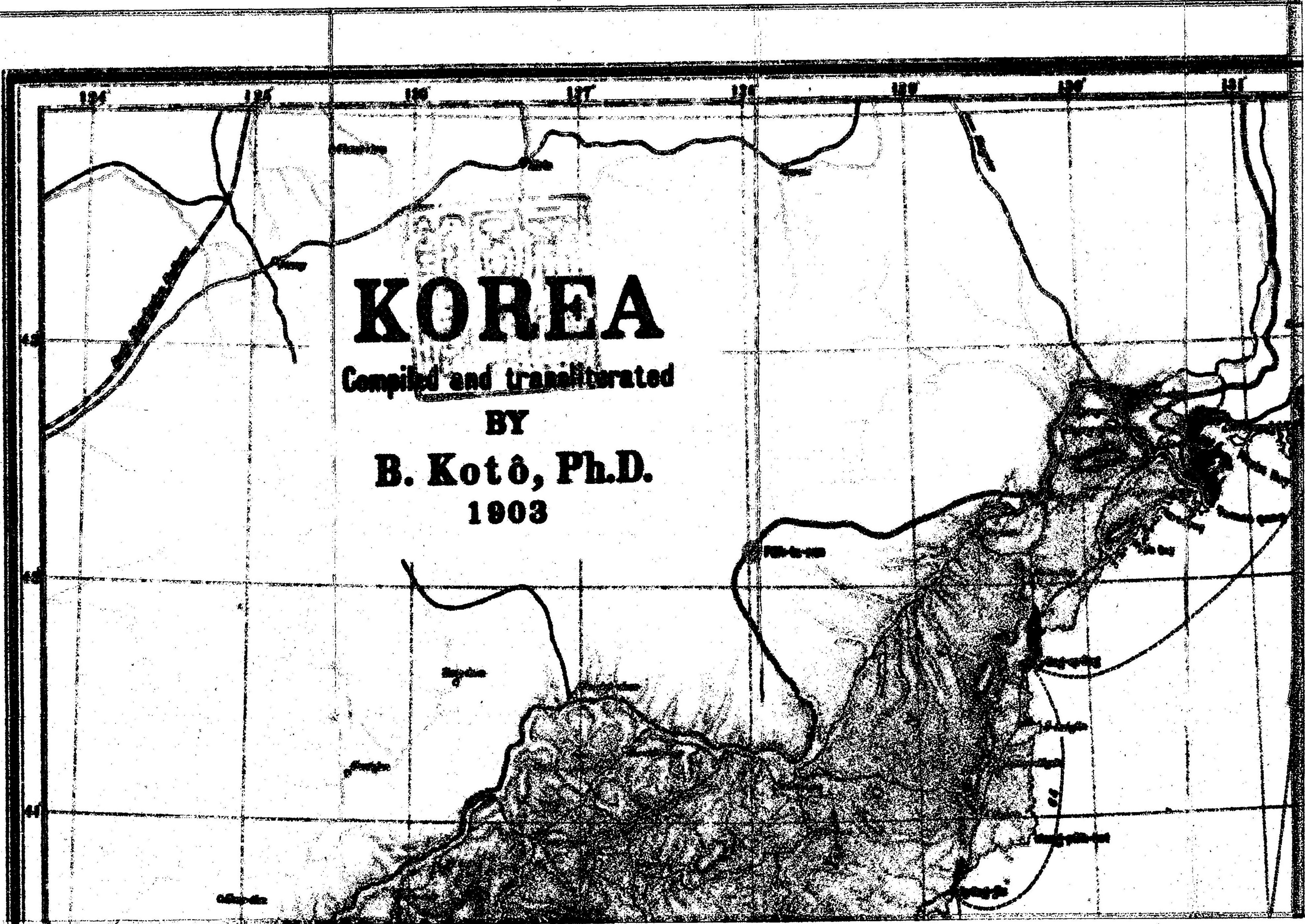
A
CATALOGUE
OF THE
ROMANIZED GEOGRAPHICAL NAMES
OF
KOREA.

BY
B. KOTO, PH. D., ROS-HAK.
AND
S. KANAZAWA, BUNG-HAK.

PUBLISHED BY
THE UNIVERSITY OF TOKYO,
1908

MARUYA & CO., LTD.
NEHONGASHI, TOKYO.

(price 50 sen)



KOREA

Compiled and transliterated

BY

B. Kotô, Ph.D.

1903

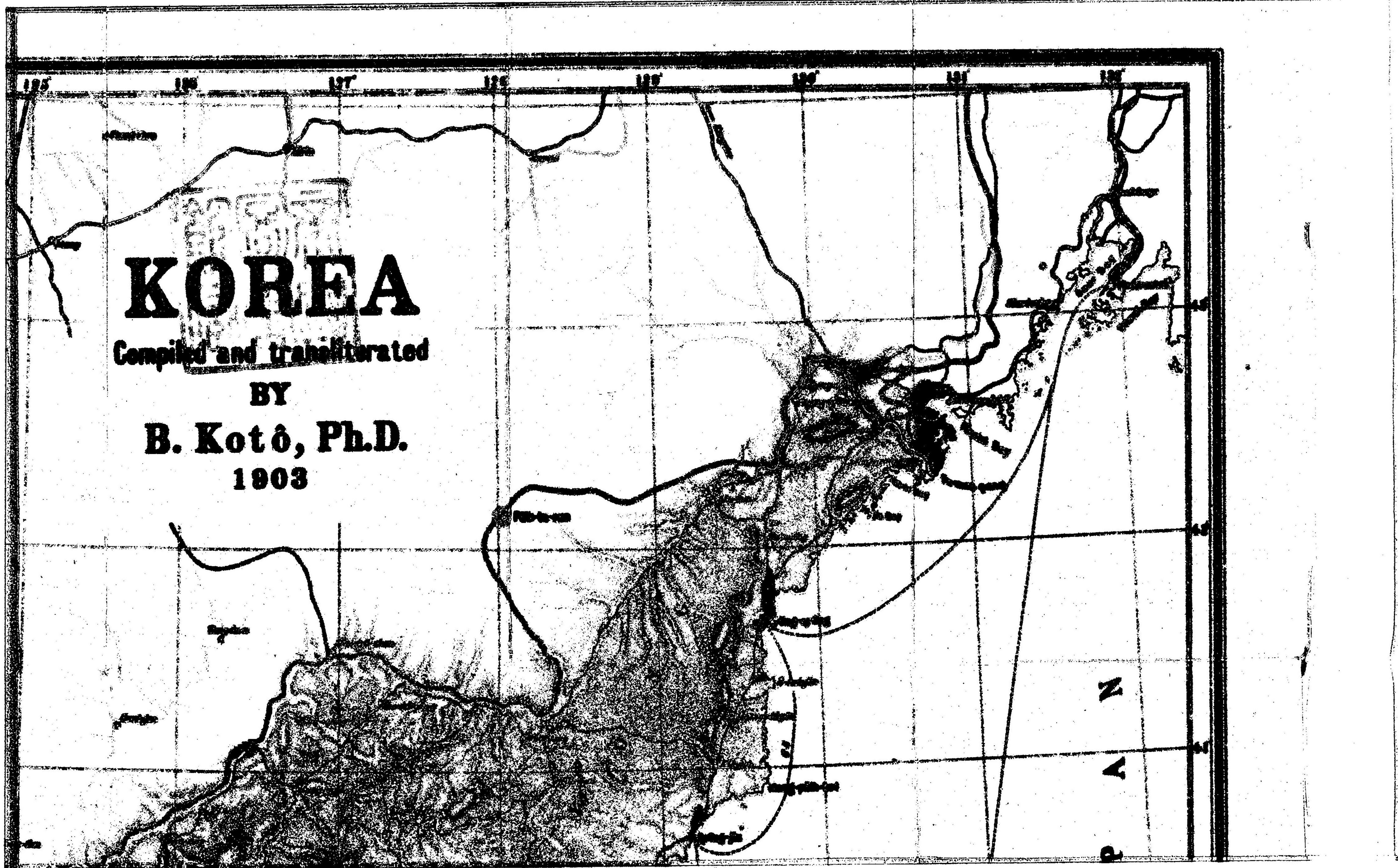
KOREA

Compiled and transliterated

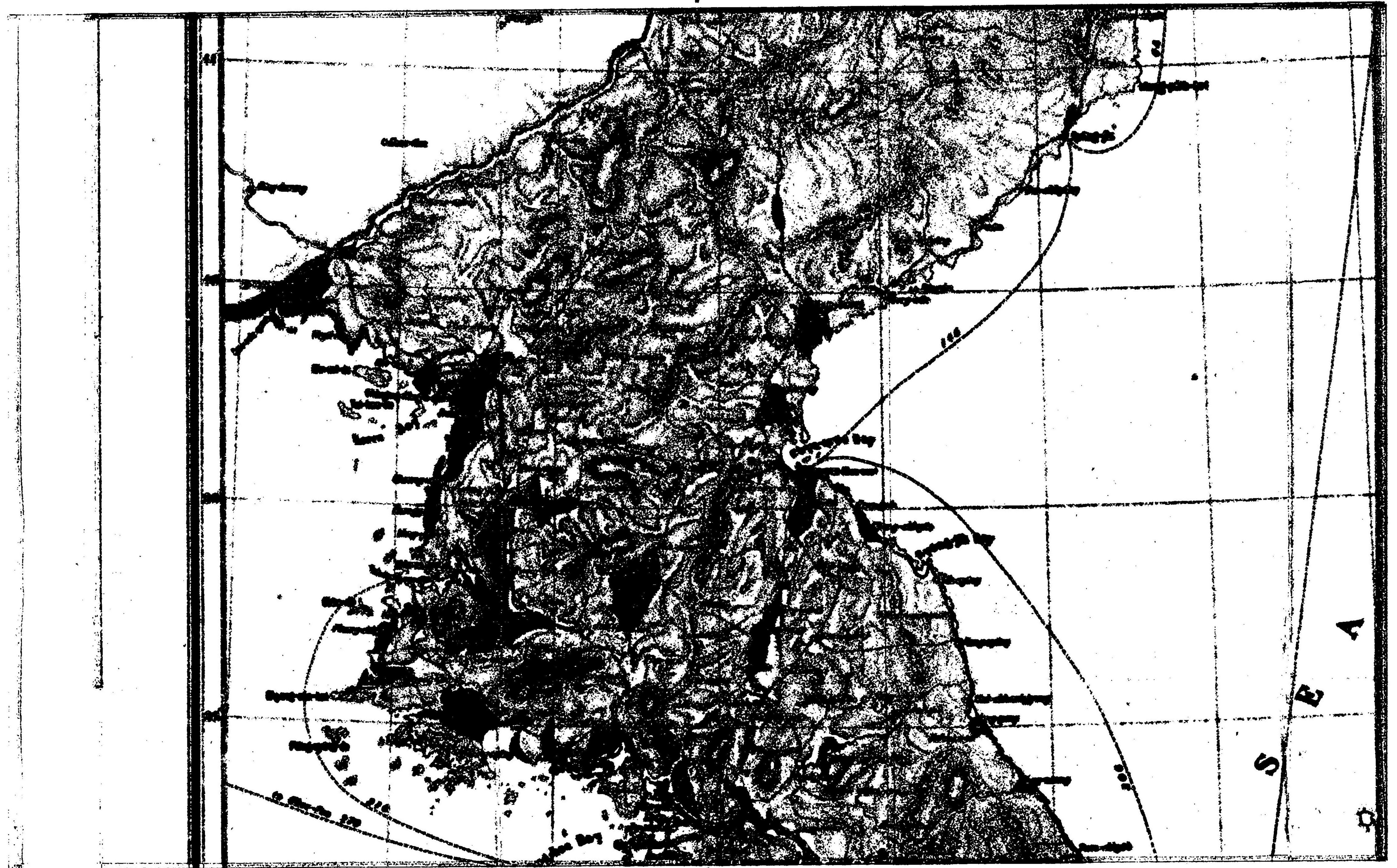
BY

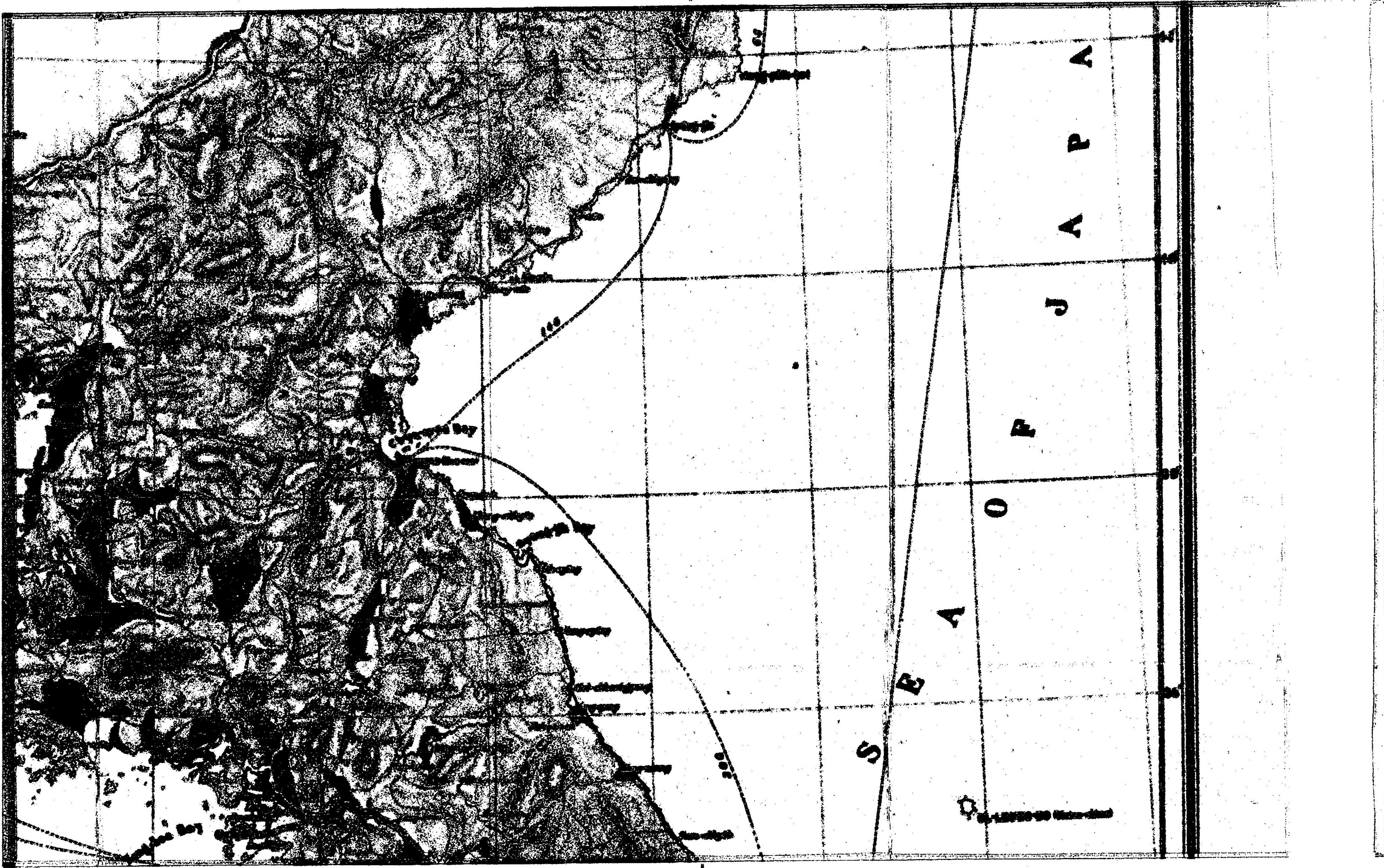
B. Kotô, Ph.D.

1903



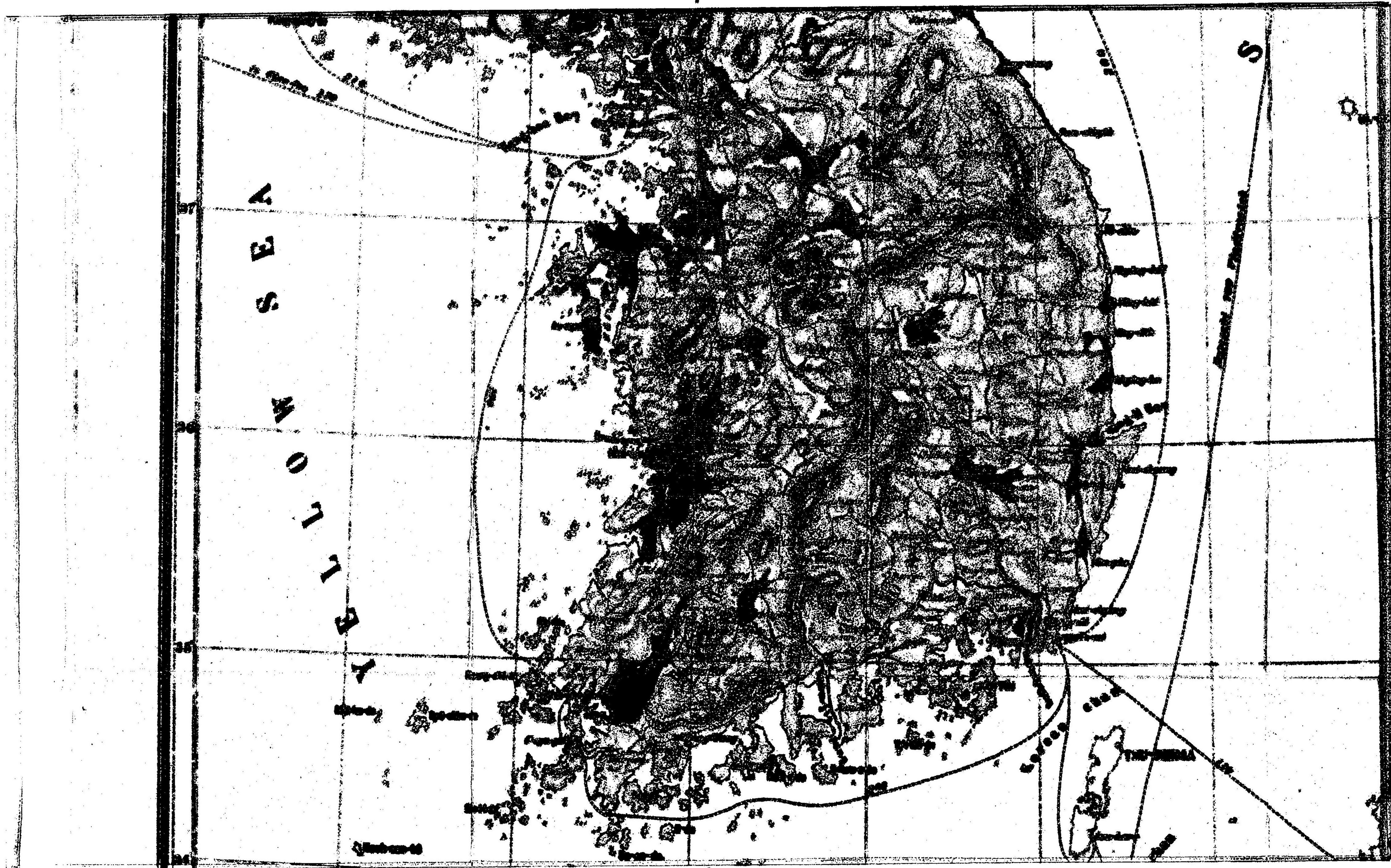
N
A
P





Y E L L O W S E A

S





UL-LEUNG-DO (Matsu-shima)

Magasaki 700 Vladivostok

CHŪ-GOKU
Yuma-guchi

TSU-SHIMA

Korean chan

Jzu-han chan

K-san-tō

So-an-do

Ssang-chā-do

Syō-chho-do

Sin-i-do

U-syu-yōn

Chūn-do

Hai-nan

Qay-do

No-ro-do

Keum-o-do

Yok-chi-do

Thung-yang

Ko-yōng

Chūn-hai

Kim-hai

Yang-san

Un-yang

Yōn-pho

Keui-chyang

Tong-gui

Pu-san (Pu-san)

Chūn-hai

Chūn-hai

Chūn-hai

Chūn-hai

Chūn-hai

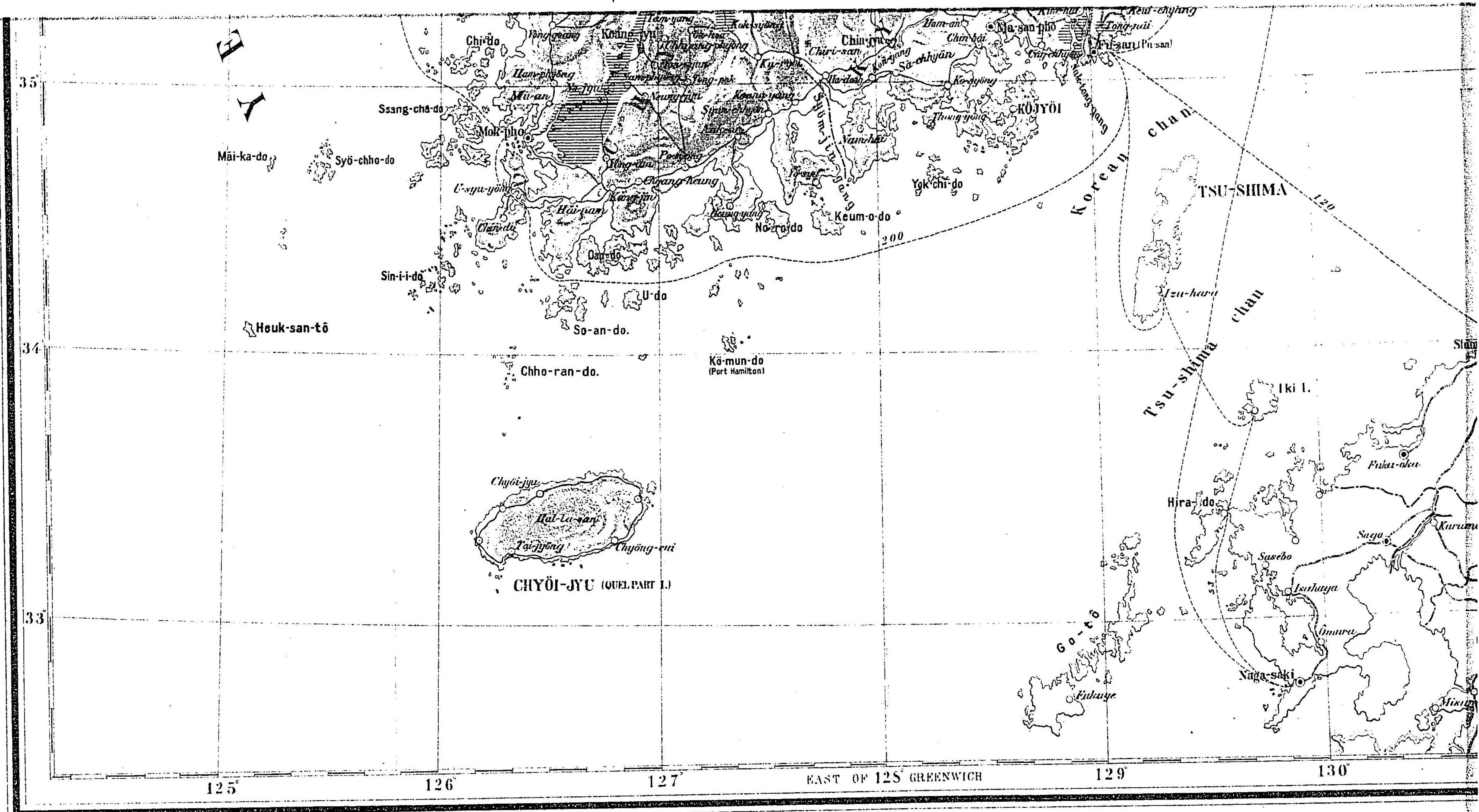
37

36

35

34

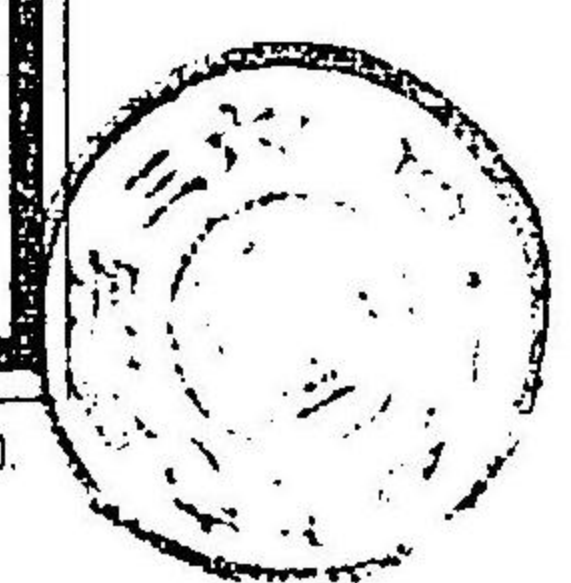
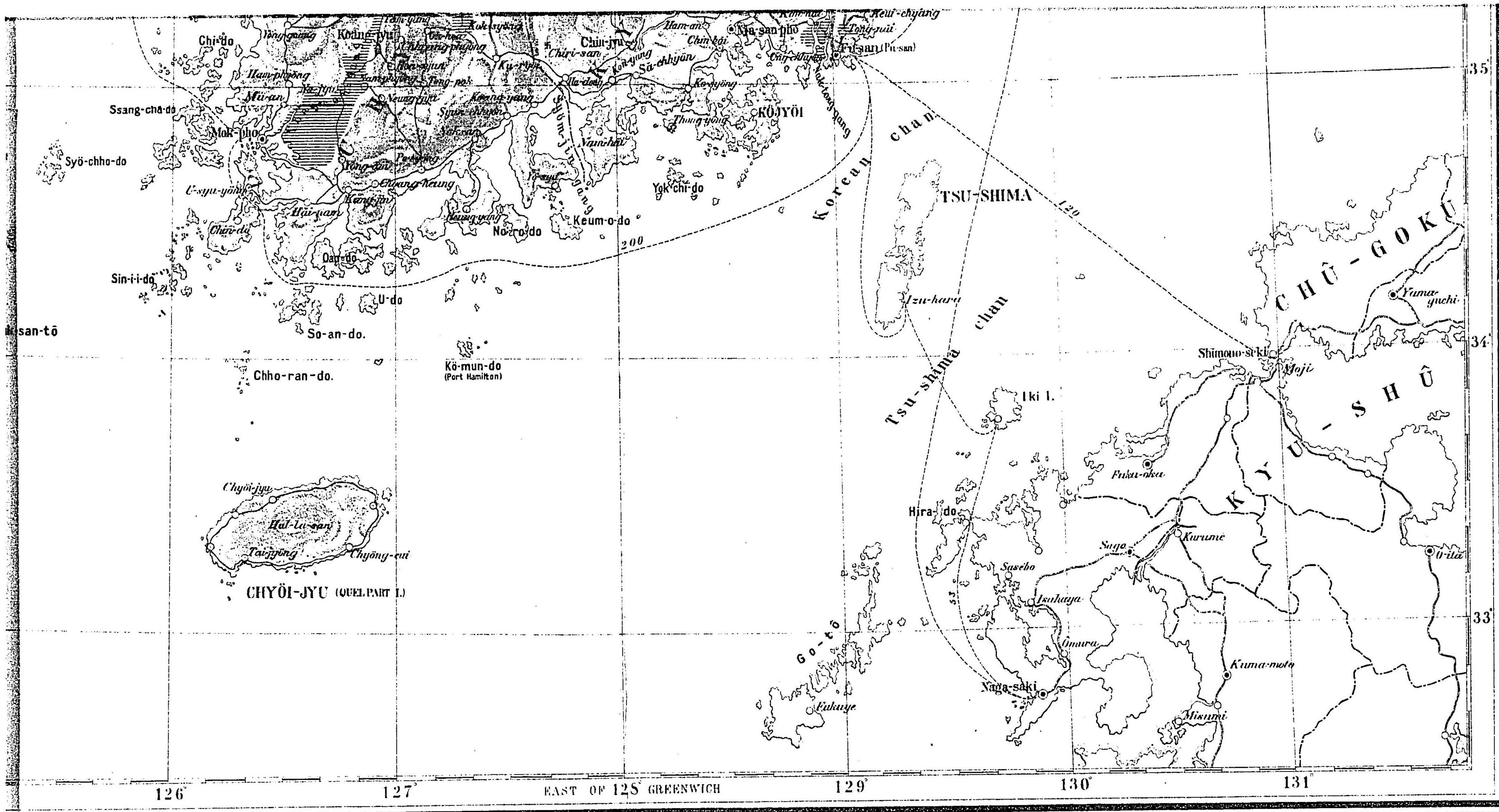
S



Sasaki del.

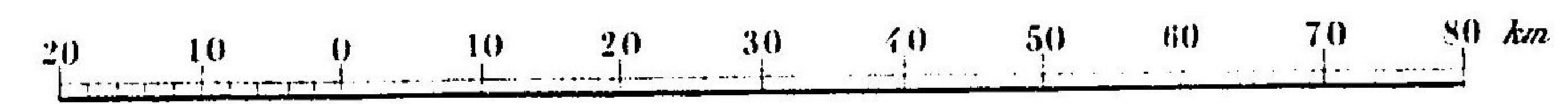
Scale 1:2 000 000

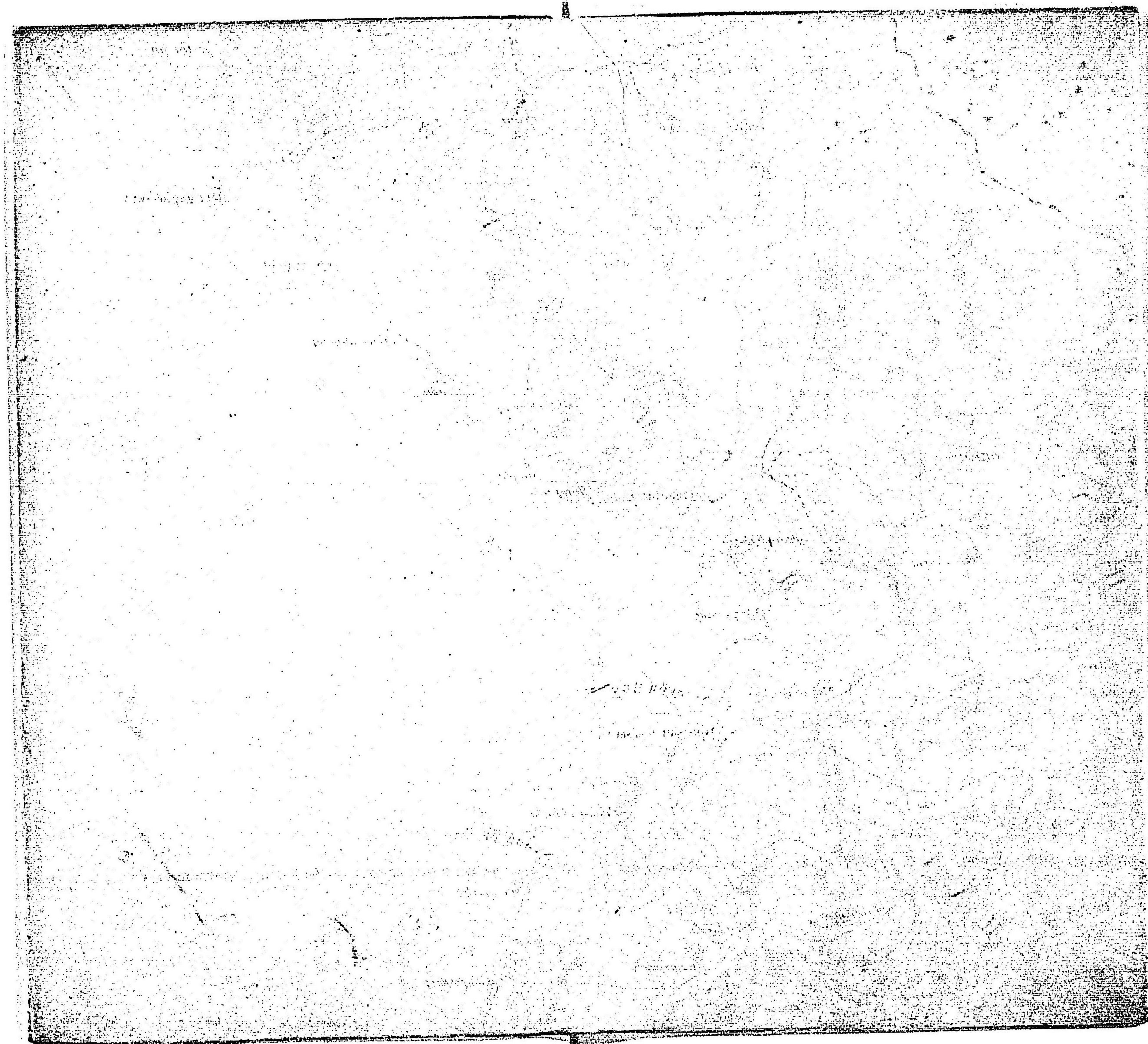




LITH. & IMP. THE TOKYO PRINTING CO.

Scale 1:2 000 000





明治三十六年四月二十日印刷
明治三十六年四月二十三日發行

編輯者 東京帝國大學
印刷者 東京市日本橋區兜町二番地 野 錫 東京市日本橋區通三丁目十四番地
發行所 東京市日本橋區兜町二番地 東京印刷株式會社 寶樹所 丸善株式會社 書店

定價 金五拾錢

027159-000-2

189-297 (洋)

朝鮮全圖

小藤 文次郎/編

M36

ADI-0187

