

Wm Osler

1/10/73

Berlin

W. Osler

6 9 21

20/90
4

5 1 1
208/00
5
201

43

FROM
THE LIBRARY
OF
SIR WILLIAM OSLER, BART.
OXFORD

7666 8

4 Oct.

Jm Oler

Vienna

1874

17	20	23	26	29	1	4
17	20	23	26	29	1	4

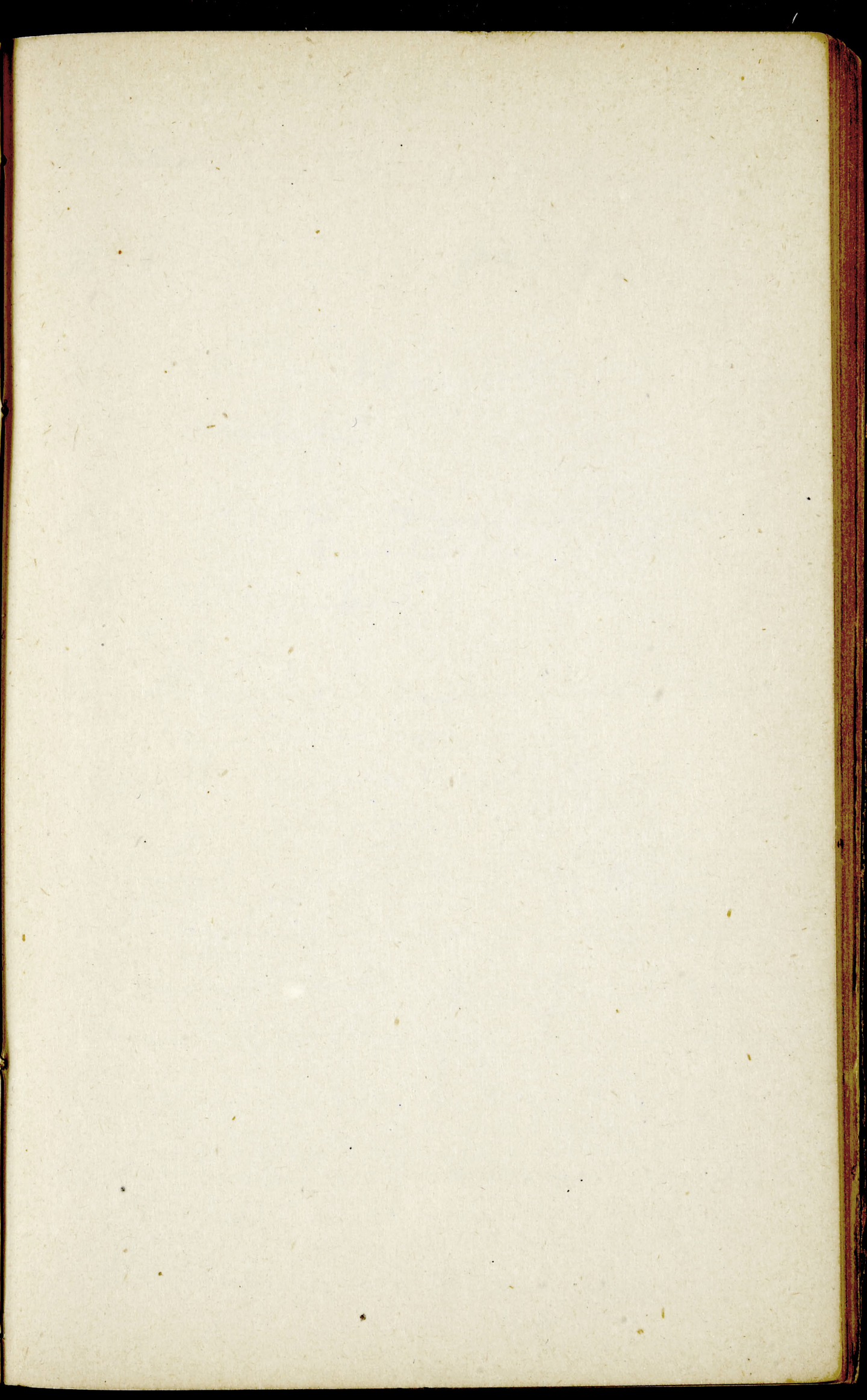
Saturday
 continued to be checked as men, in their own
 name having to understand upon their return
 a daily plague, which, in the aggregate
 may average on the whole, the particular
 but as to women who came particularly
 the great sufferings of their the condition
 of all the board hidings and was
 had der their own upon the medical board
 as best protection plan. I hold you in
 the id of forward, these projects of the past

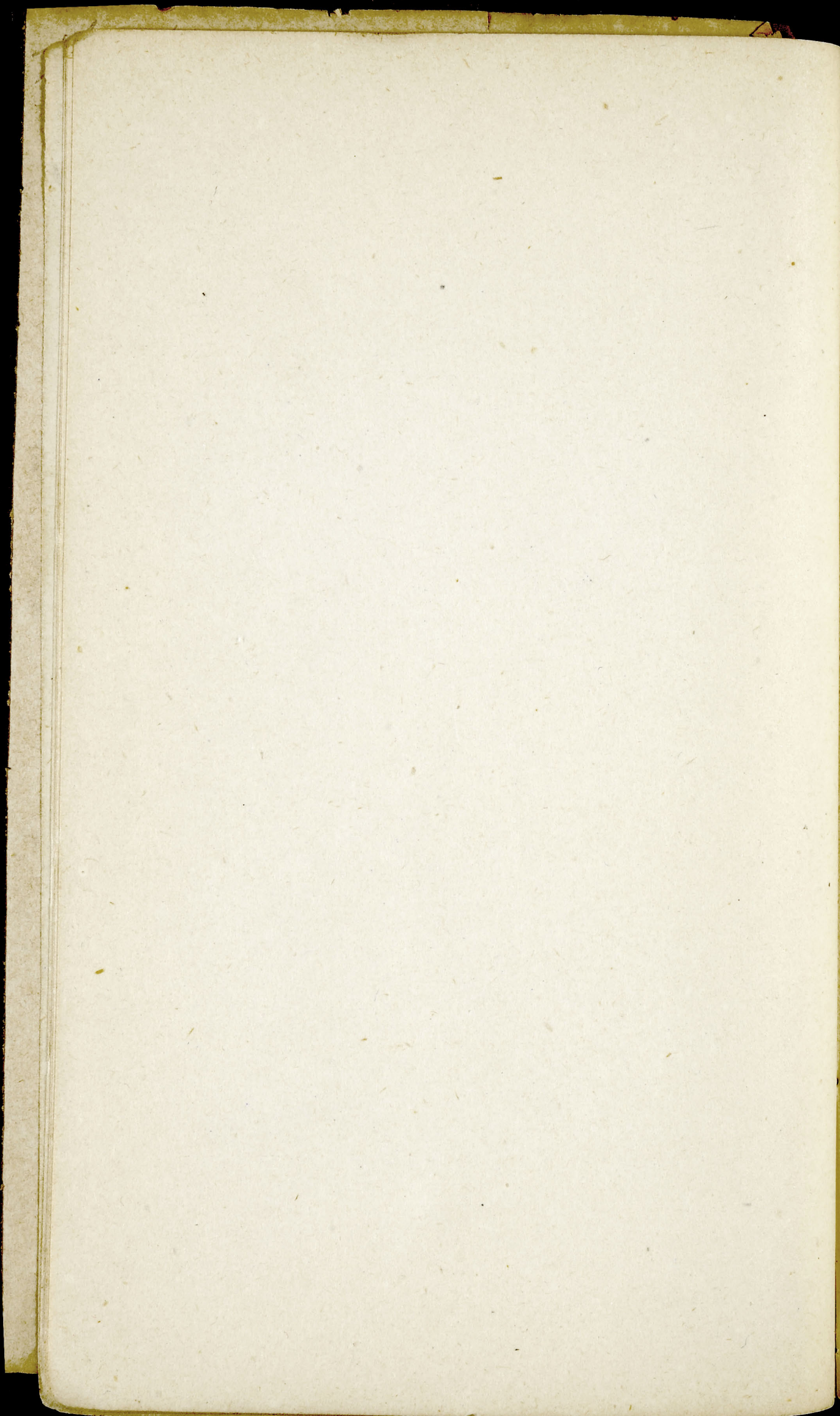
509
 R. L. L.
 Sumner
 Est. 1874

Olea Malacca

Indica

a woman in her tenth pregnancy & at
times with regular m- months started
in the 4th months of her tenth pregnancy
the Os. Mal. appeared







~~Catarrh of the vagina~~

when the 1st or 2nd period gets come
say no matter when that. And much
become unhealthy & but not so is. The
milk a little changed the excreta is
lessened. when 3rd or 4th but true gets be
period ch gets color of appearance.

2nd period. then app. entire longer. soon
the 3rd or 4th the colic not long can
with the cessant of the period but can
last for 4-8 days. get pale &
less strong. when 6-7 much older.

the 1st period comes then stop the
milk. but if 2-3 much older stop
stop the 1st or 2nd when the 2nd period
comes. another case. Galactaria

in a quantity of the milk stand that
in the breast. when a 1st or 2nd has moved

a 1st & then a new born one apply
immediately. then I do not think

be as the other does a strong diet
place must get a strong ch & draw
the breast. & Bellard. F. A. D. &
salin. pla on the breast, a dinner
etc of the breast. I produce in

paralysis of the muscles of the breast
Take care of the chest & don't apply it to the
breast when the nipple is sore

If a parient alrea breast no matter of the
chest but of enlarging one in the center not

chapped nipples when by bad must take
away the child less, use an ~~any~~ band
wh projects the nipple
when ^{must} W. R. sudd. little away.

of any illness as fever, as acute
Gardner carbuncle must draw off the milk

Medicines must be used carefully, as they
influence the K. as Hg. & K. all are sent
in the milk.

when one sees that the K. not perfectly
nourished then find her the best milk a
good nutriment.

K. 2 months old, fed with Scher's milk. Every
2 hours - sound colic, mix the Scher milk
accord'g to the dil. part IV

The acid in the gastric juice is now believed to
be as much important as the pepsin
IV part July cause in 37 Hg. One better cup
file before drinking.

Lanquasparmus common with Rachitis
Bath smark with cold water every 3 hours
on the head especially
89. Van. Soderi sine coffeae.
"9th m + abnea

Abneces that one by one feeds Childron
uberfully along, takes too much food get pale
get too full with 3-4 m. get Rachitis
Dyspepsia appear follow when too much drinks
Extrins in the day & 2 in the night is many
when 14 dg old, when 2 month old, if
times enough, under 1 month 2 in the night
often than 1 in night is 4 times in day
5-6 in 24 hrs for a child 2-3 month
old, when shall mean

1 in the child 2 in the mother or nurse. Exposure
when the child is exposed ^{to} that I can feed for lack
about 4 inches. Lead at 9 months
if 1 Rachit. then spiter 10-12 month
when the salivae begins to run out of the
angle of mouth it is a sign of ability to take
the nourishment.

2 depends on the W. N or weather, when from any
the milk ceases. then if it will nourish
about 7-8 months old
green it

(3) Time of year: I + 7 good, wear them

May. bad. the ^{day} produce is bad.
green food diff to get for ^{the} cows or fiddleheads
in the drier of the. are more prevalent than
in the change years. dam calum
mai good. Cows get fresh good green
June good

July. bad. great heat. dam calum
milk is apt to be affected by the heat & get
sour.

August. same

Septem Oct. . Nov. Dec. good months

Do it under the old rule said
it goes good in some cases ^{but} often becomes
dubious. Abundant they. not good
chose apt to come in

Never do it ^{the date} out of the mouth or ²⁴ hour get sick
suddenly. It should ^{8-9 months old. relying} be 4-6 week continued
since the same month continues ^{1 month} in this
period. if 7 month old. ¹ open breast
1 B. month. Non-ment. simple soup
Font. beef. Sugar if salt is not present
after 2-3 day begin with milk either
per milk. 4 mat B. 1 the sup. 2 milk
When 2 mat beef & 3 mat Liby subpe run
5 in B. then the milk is ripe for drinking

Lactidose 70000. 7 lbs in healthy ch. disappears
10000 → 3, water in a week in weak infant
before 3-4.

Kesma unguis od. lina alba

Syphilis. Rind

Wing. 40g

Wing. Cures ⁱⁿ 100g. 30 fat

Croup.

Lactic acid. subphosphate 10g

Chl. Nat. Kali

Chl. water application

Artific. Nourish

when in milk sick. Sweet & great cur

Butter cur. sp. grav. the thickness. Take

a long tube. let 100. out of this 3 of butter

have. after standing 24 hours

sp. grav. depends on Casein. Reaction usually
alkaline.

Butter in warm milk in 10 part of dry matter
later about 3 per cent. Casein more at latter
part of day. Curd is the great diff. Casein

than less sugar. Milk sugar but. or Candy

sugar. As a milk in casein. dilute

it. in curd 38% butter 14

Thin the milk. An milk morning
cooks, always. a new born child 1/2 lb
2 pt water, 4 tabl water & 1 tabl milk
sugar. & put the milk to the sugar water
In 1 month, 1 quart milk is enough.

Arrowroot. often used

Sometimes starch used after thinning the milk
with cereal. used also

Sieve a sieve used. (7 added) for removing the
curd without allowing the milk to come in contact
with air. to prevent the curdling

It is not alkaline soda. not good

Fruiting. soup. much used but when good.

It is the best form. yet it must carefully be made
the starch is good too

Various methods. Others

Others. little milk. after 12 hours slowly
lute of the curd. kept in a tin with 2 pt
of sugar

Artificial nomenclature. under.

(Monte) . 7/4/74

Treatment of incontinence perine
(arising from weakness of the urethral
muscles) in children with electricity.

Place one pole up the rectum in contact
with the prostate gland, the other in the
vagina of the penis. Pass the current for
at least five minutes. Sometimes only
one or two applications needed to cure
obstinate cases which have resisted.

strychina or Belladonna

Monte does not recommend chloral
hydrate or Pertussin (2 slugs) but advises
the use of Belladonna or sometimes Br.
Ammonium

Aug. Syphilis 10 days old

Sy. 7m ind. for 10 days. 100 grs. per day

Intestinal diseases

Study the stools

Dyspepsia a defec. of milk with full
stool middle inst. one part changed
with the about unchanged, but the
colour one part white other yellow.
Some small acid reaction & paper
betw. fluid & solid is about equal
something also unchanged or coagulum
milk. a few appe. colic. flatulent
chry. from the m. m. apthoe. & even
cat. & no fever.

What the cause? find this ind-
we consider the ch. as cause when too
fresh in world comes. & even if later
a young man. yet the bad cause of ch. is not
fit for digestion. High better for milk
to mouth with develop of lactation
so prognosis is good. Cause in
born. stool is green. often
too much take. and dysp comes
on. When stom. of newborn ch. is green
stools ^{found} not fully developed. as an

a great part of milk is not digested
as not enough pepsin is added
Came in the air. less the quantity
given when was can in clots than
it be too much

3 cases, usually, as cases with
great course of H_2 is eructs, or dent
Diarrhoea. as. Diph. dan cal. or as
entails. or the development ^{ing} hard
Canine the case. more.

Medicaments. H_2 intestinal, & hidae
Washing. Pepsin. H_2 acid. other compo
of two little pepsin water given & pepsin
the H_2 of pepsin is ^{enough} for a dose of child of
2 weeks. or as drinks before something
the acid. acid bath. or Mucilage
of pepsin fails. An H_2 diet for the
diarrhoea. before the milk. pepsin
after H_2 diet. is gutt. Def. of pepsin
is seldom. the case of H_2 or deficiency
of acid. Bacteriology. even with this
the acid as the acid or lactate so
more. decomposition. The may be
& Mucilage

Empirical med. consists of unchanged
med. acids. when such some such
promul matters. alkali med
soda. or aqua calis. 6 gr soda
3ii of water. for mixing.

Cole's flatulenta.

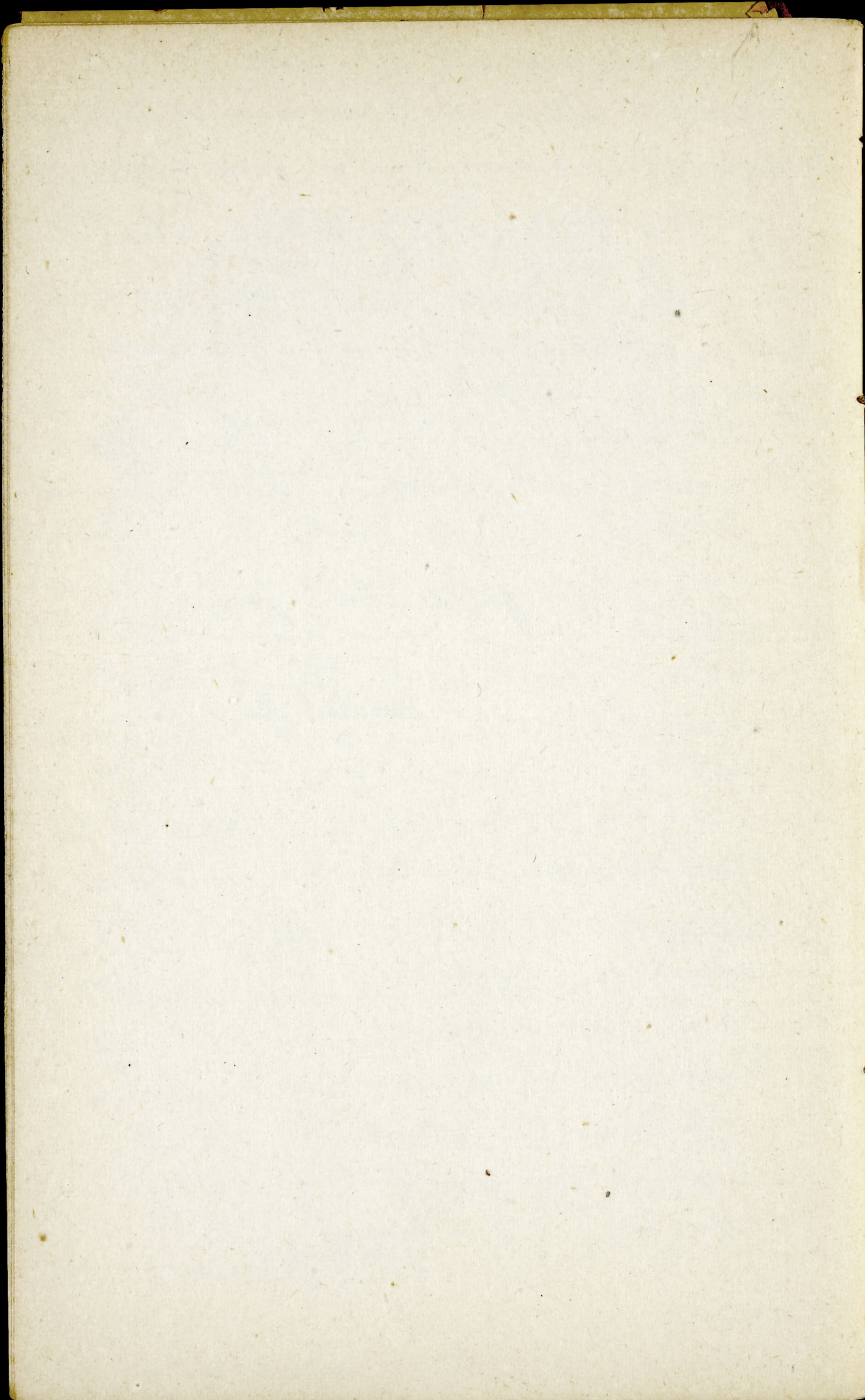
Into calant stools. may be, more
fluid than solid. m. b. to
aureol. & gas. & green. some or
not. in later a shaft; remain
open. men of. less of vom. & pains of
belly. no fever at begin. or a may be
a little collapse. when it comes of
a sign of curvule.
belly. swollen. ^{reigns of thick} ~~chance~~ ^{men.} urine dim
much. Absent. take not
when a R. & a intercat. an output
in an exit. the which in small amount
in dyspep come what once. much gas
Calant gas. ^{entire} to neon. or into ^{entire} or chills
ack. inter. cat. a not diff. thing to treat
of a Ruch. child. why. obtain. in these cases
of an exsima has a gland curvule. the child
soon we need not full ulcer & is hard
in prognosis. the thumb & urine are
the points. as as if the duct was

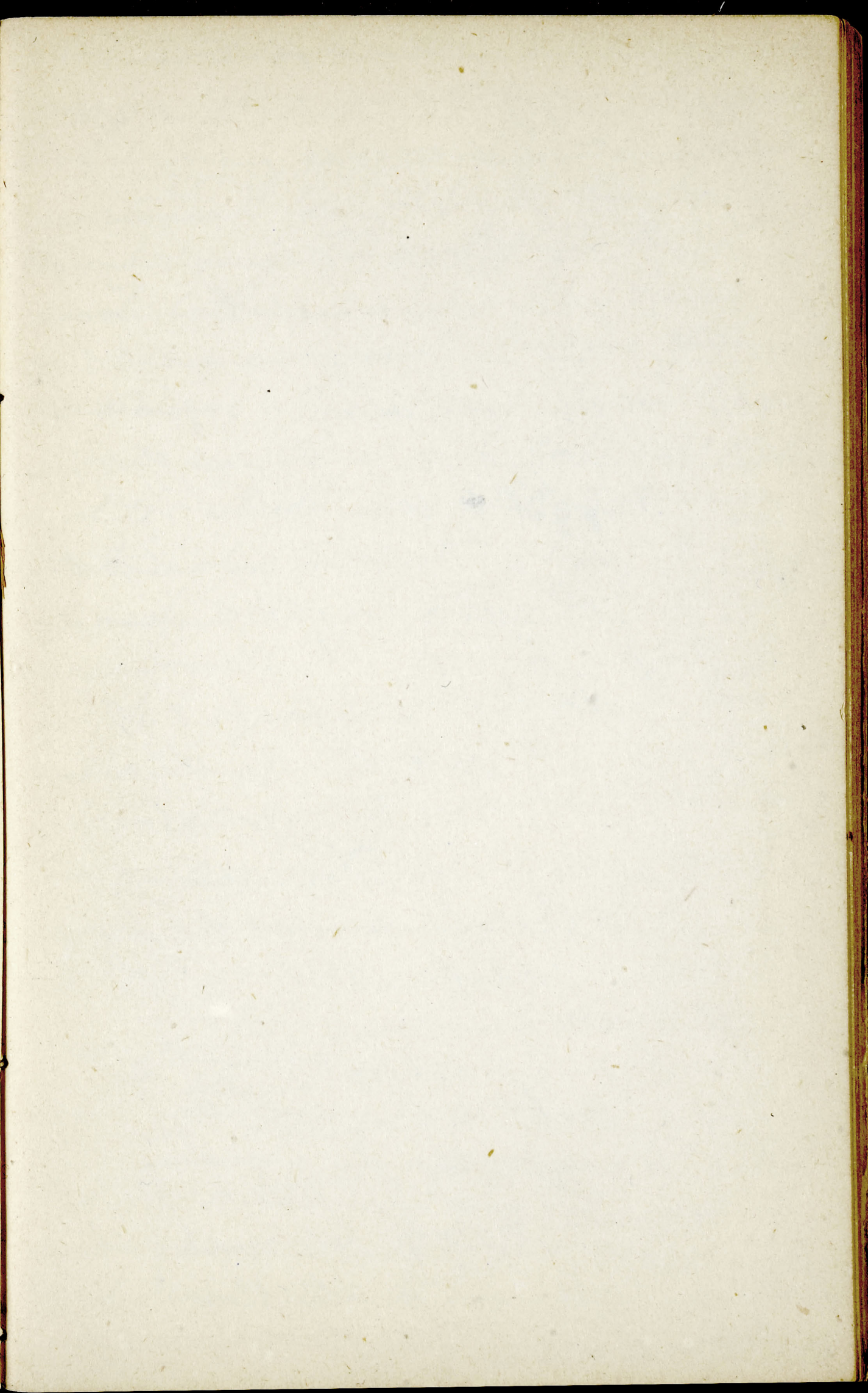
I write down no favour program
is to be given, which begins to feed
is favourable. The empiric, some sample
others go. Warburg, of early moment
with a brand. Spin 1 year as an
old, milk, coffee, which, some full
others, chief care of treatment in most
death made not much to do. Give clous
coffee, then leys, soup, flesh, saw
in single cases, good, in other, see with
soups so the circle round, by them
about 10 days each, found the case
bad, water had milk? Can drink water
in Soda water, I read adv^{rel} water &
albumen, Medicines, ash, & opiate
be begun, used to be given done of spec
all vomiting, no good, of purg a dyspe
sive paper. Hel. Ach. rub. Col. give
Columbo. Sec. or Pul. Col. 1/2 gr. with a
nut Opium, either Pul. Dov. or 4 + Opium
New born ch. & in full week, no Opium
is immut. Ach. in a yr. with the
1/2 gr. per day, of Pul. do, 1 week 1/2 gr of
P.D. over 1/2 yr. in 1/2 gr of P. Dov. per die
over a yr. 11 gr P. do. I find Opium
under 1/2 yr. 1. Do opo die over 1/2 yr
11 gr. per die. 1/2 gr of P. do per

has can, comment the refer to, in
a child. $\frac{1}{2}$ g in 12 doses, as a good
way of Dose. Do not give them
any at a time. of a each child
see, with each. some, & from
bath, outer methods. Keep a uniform
temperature, Plaster used, of older
Physic. Cold water treatment is
good.

Enteritis, the follicular form

begins as such, or as a Dysentery, or
a group of cases in Scarlet fever, 74 hours, or
7 and P.M. large under swollen, 4 M.M.
of short time, starting, in, of larger whole
large intestine, acute & chronic forms
Stools formed, bodies, rather glass
color, green, schlemm, or bloody stools
specimens of more Dysentery. Casein also
unchanged also, come in ch. which
has been lying in a Hospital, over. When
got perfect, per, in stool. It is frequent
20-30 men. It is small. Stools often
way, we have, a healthy looking one
at unthe, a typical, dry enteric. Must
collect several stools. Pain at stool





less of length so without flatulence
put a specimen of the belly into a ph
but often intruded. Further symptoms
begin with cold at face - cough
usually in a Dyspepsia. Spleen of lung
entirely in fever or as a result in some
+ evening. They are pale. Emaciated
ectic. Dry lips & chapped or ragged
Transverse gut pain of more charac-
ter. They get by them. Spleen taken
Measurement, urine & chyle is stopped
hence the abnagering. If a lung un-
lined ch. enter one end, allowing
person that should take the ch. 8-9
years of living & then health con-
sidered, a disease comes in connection
on the periphery. very a by distribution
Prog. should be bad when fever is bad or begin
continues. bad when respiration is altered.
Kinnichin or Quina etc. Continues in
different for a few days to years.
Therapeutic Diet. with use of feeding soup
alone or a coffee can do wonders. In
the begin. this must when fever is present
for 2-3 days & cold drinks soda water
later give weak urine & water. Small quantity
of beef and flour. Then raw flesh 1/2 lb

1. Cod. 2-3 drams a day. Tulle & beef tallow
poultice for fat: & give either on a little bread
Good in many cases when it can be
continued long & the drachm (?)
Must change the diet often. Mutt is
good. Later not at first or 2000
Mutt is not good. Don't give too much
medicine. Give at first usually a
slight purgative, with Cod. but of the
a older child 6 gr of P. Rad. Rhubarb
Naturalist is chylers. Simple chylers
at first. After a while strong stool. If not
succeed with these, new liver. 1 gr of
for chy. 1 gr per 11 gr of chy. Care
we order 5. 7-6 gr 7 ac 3 1/2 of fluid
& mix with 3 oz. P. seven ent. almost
per gr arg. ent. chylers in glass
syringe. 1 chy. 1-2 gr arg. but.
7. Cl. 1-2-3-4. give in chylers
over great pain. with water use
with chyme chylers
Internal. art. gut or operable. Use
P. d. in beging. 1 gr for 4 or 5 d. chyl.
with Tannin or Linnæus Tannin.
P. d. chylers for paper & ac. mammaries
7 ent. Cancer. with of skin
in Dec. Calumna of Est. Calumna 1/2 - 1/2

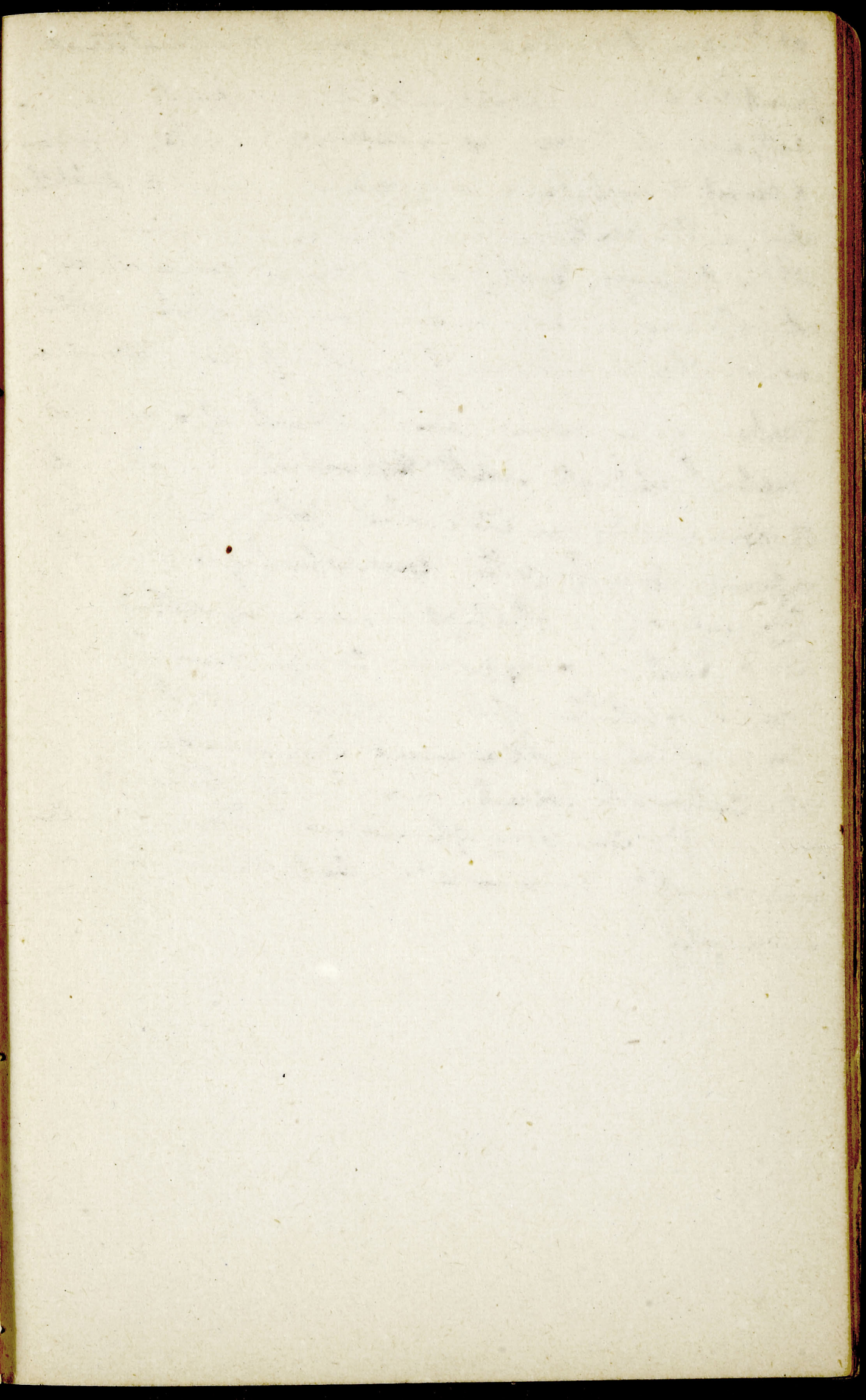
Older than I. often 1/2 - 1/3 gr per dose
formerly, any nit are much, now
less of use. 8m 1/2 - 1/3 gr per die
In these cases other. But so common
& invariable is present, bath.
Cold water treatment is good in Entert
dysentery or a. bath & rubbing
Change of air is wonderful. An
imp factor the consequence is the by direct
an aden growing, thro the cerebral
circul in the brain. This is very common
in looks for then when a man comes
in & aden of eyelids or face, & then
- begin. strain the brain. nose puffs
shin puffs. skin in deep. shallowly
finally the druckes. symptoms
very pulse. & a little men. tuberculo
common. wide pupils. scurvy bands
ema & aneurisms. Return it to
Men but little I don't. but the Hurler
One debt an act & a chum furs
Therapie: stop the drainage. & actin
methodo opium in 1/2 grtt, 2. as the
age. per dose. Stimulant. Mus. ten
best. wine. Cognac. Camphor. Ether

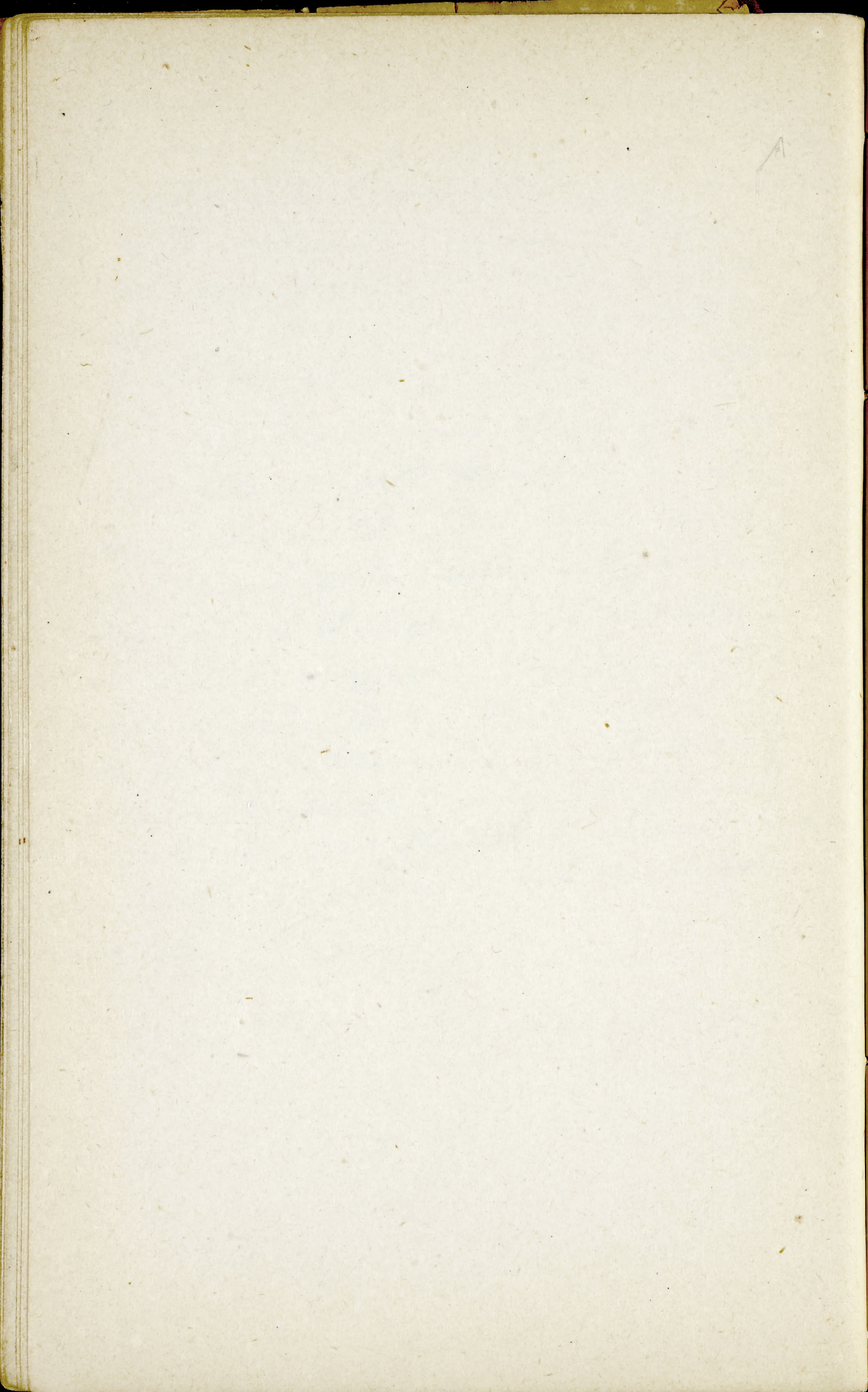
Sulph. Az. Cur. being given & get
they coughs

Morbilli are as an whole char of red
flecker over the whole body, acumin, per
& calarshal eruptio. It is contagious
It only material is in the mucous & ad.
above for the various membranes. Incubated
14-15 days. No good to separate children
unless it is done at the moment of
before the calarsh come out.

Symptoms. Prodromal. calarsh appear
from eyes, nose, pharynx, & throat
2-4 days perhaps. most important
is the calarsh & the cough a mean cough
& laryngeal cough. Tolle cannot to
call this for cough. Many get even a
slender pharynx in this, or an adenia
in Sal. Erupta. Fever increases. small
red spots on forehead & face, then to
neck & breast in 3 day the whole body covered
in same way disappear the small face first.
The permanent plebe remain often more or less
marked. Abschuppung comes on depending
on the eruption & ends about the 12. days
when the calarsh is long carbon & a couple only
for the disease last 6 week. usually a 14 day
disease. An important point is that
sound health spots remain between the green
at least. This is a point of distinction

between it & local form of great importance
Amphicentesis. Respirator mem. chief. as
colombal Pneum. or a second group. a follow
of acute Bronchitis & Laryngitis. more a Diff. of
it in the non Membr. Whorly & Tuberc
It can happen that from a non colombal or
whorly cough come on as Morbilli. affe.
will often be followed by a whorly cough & often
Tuberc often comes in a child of a careful
habit affected with Morbilli & catarrh
a disease as the old phy. said is
a good deal of the curable of a child
Therapie, a slight cure with
but diet & hygiene. Cough perhaps
needs a little. Air & keep in bed.
give cold water and drinks see
The catarrh needs most treatment
give better see day after. Most epide
are short: 3-4 weeks. but they differ in
severity.

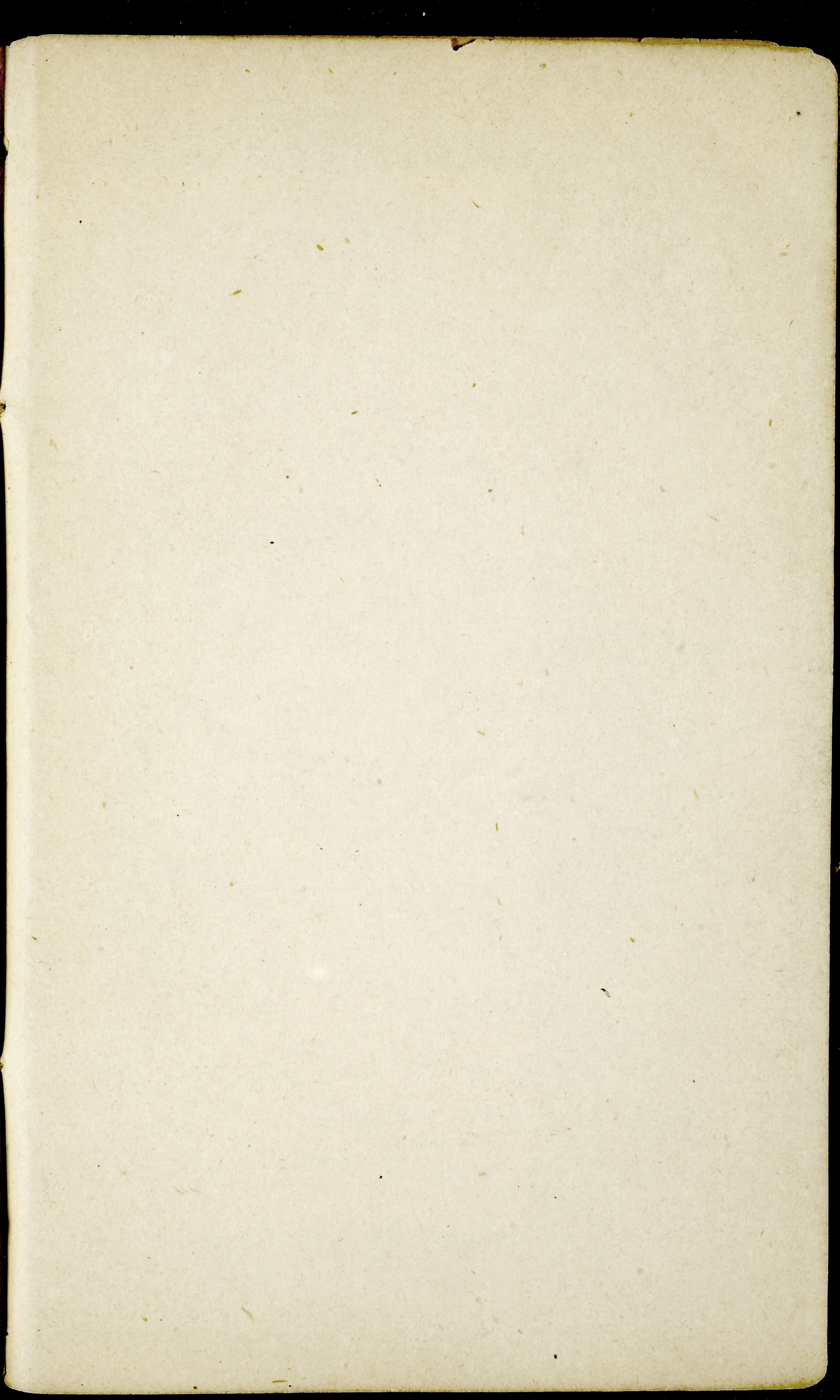




The alteration in the ...
the ... & the ... of the ...
arising in certain diseased states
might bring about such a condition
favourable to their development.

apparently, and that is required for the
process of development.

Hueb. Centralblatt. 1868. No 12
speaks of finding in the epithelium
of the ... numerous masses
of darkish ... partly round
partly oval ...
which ... be held
as Schivariniferous & they were in
local movement & found similar
bodies in the blood ...
(in the blood)
of Gungem of the nose
See also no 34 & 35



Capillary infarcts of Kidney

100

Anchylous

Cancer (stomach)

8/11/73

brown. absorption of liver

Now known as: The marrow cavity.



Infarct of spleen

Capillary infarcts of Kidney

100

Anchylosis

Cancer (stomach)

8/11/73

Marrowman. The marrow cavity
brown absorption of liver

Pap. loops

Capitulum (?) appressed. fixed

Ca⁺ interlocking. development

Profforan to cease. to end.

Wanfoelting (a) relative proportion

Orupt. Markt

Arbeitsbildn ± perfect. to form

Abmild

Markt (?)

Leinwand

Wandstatten

Defne. einw. Leinwand

Wandwandung change

Leinwand



(under the C. v. cond. best for the form)

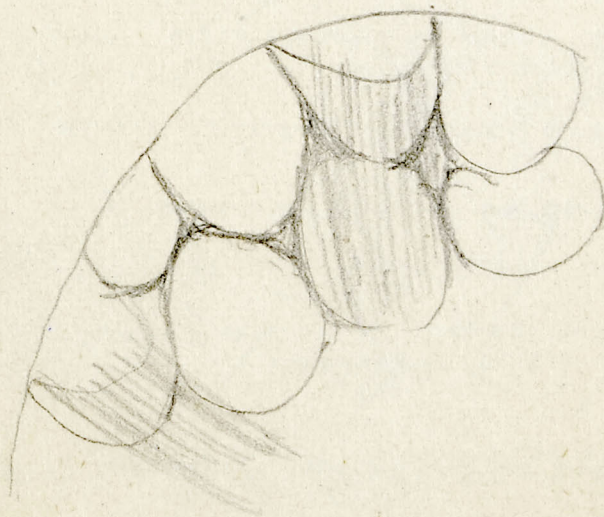
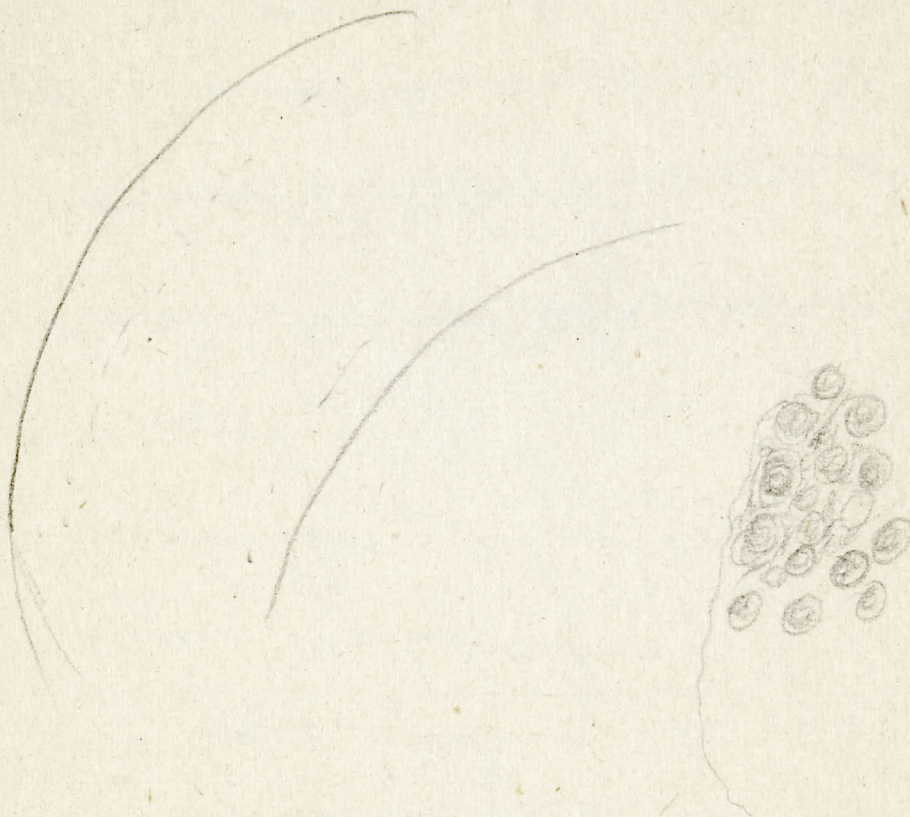
8/11/73
8/11/73

15/11/33

Centurus of liver of kidney.

Dysentery.

Syphilitic proctitis



Dampbellung, reproduction

19/11/75

colloid of stomach
atrophy of liver
Cancer of Kidney
" " Liver

22/11/75

Diphtheria



Empyema : cure in a young man (24)

Though the heart (right) may be silent it is hard to diagnose save from the symptoms. The heart dulcifies as often less than normal on the lungs cover them. The heart's murmur is almost imperceptible, feel it deep in the epigastrium. - i.e. the pulsation of the right hand is felt there being much about down

of secretions in the pleurae. In center
Spec

of prominent & copious green tubercular
mass

pl. 2 tuberculi. Nihil Per

28/11/73

abscess of brain

1st a sequence of events - trauma
2nd Extension from abscessed bone
involving part the dura then the pia
& abscessed the substance

(3) Metastatic - either from emboli

Acute & Chronic forms

Chronic abscess is by a formed membrane
shut off from the brain - encapsulated
Outer layers firm, inner somewhat
irregular & often indurated

Formerly thought that the inner mem-
brane was analogous to a Mc Mem-
& sealed the pus - a pyogenic mem-
brane. The outer layer of the membrane
is continued for a short distance into
the surrounding part of the brain - a
proliferation of the neuroglia

Brain abscess

Uterus from pericardial fever

Pneumonia

Requies with a vesicular case

Auflosung

Gangrene of lungs.

1. ~~from the~~ ^{foreign body} ~~putrid products of~~ Bronchiectasis

2. Embolism, always, sharply defined
& limited

3. Diffuse } Bronchiectasis

4. Gangrene from food being drawn into the
bronchi.

Echinococcus of liver

The cyst of large usually communicates
with the gall ducts & can be directly ejected
as is however with the small ones & it is
a secondary perforation



Congenital syphilis

Ure and. infection of newborn child

4/12/73

Arteritis deformans

Ateloidosis - Fatal Pneumonia

Carcinoma Hepatis & Hydatid. parasite

Localized Hepatitis

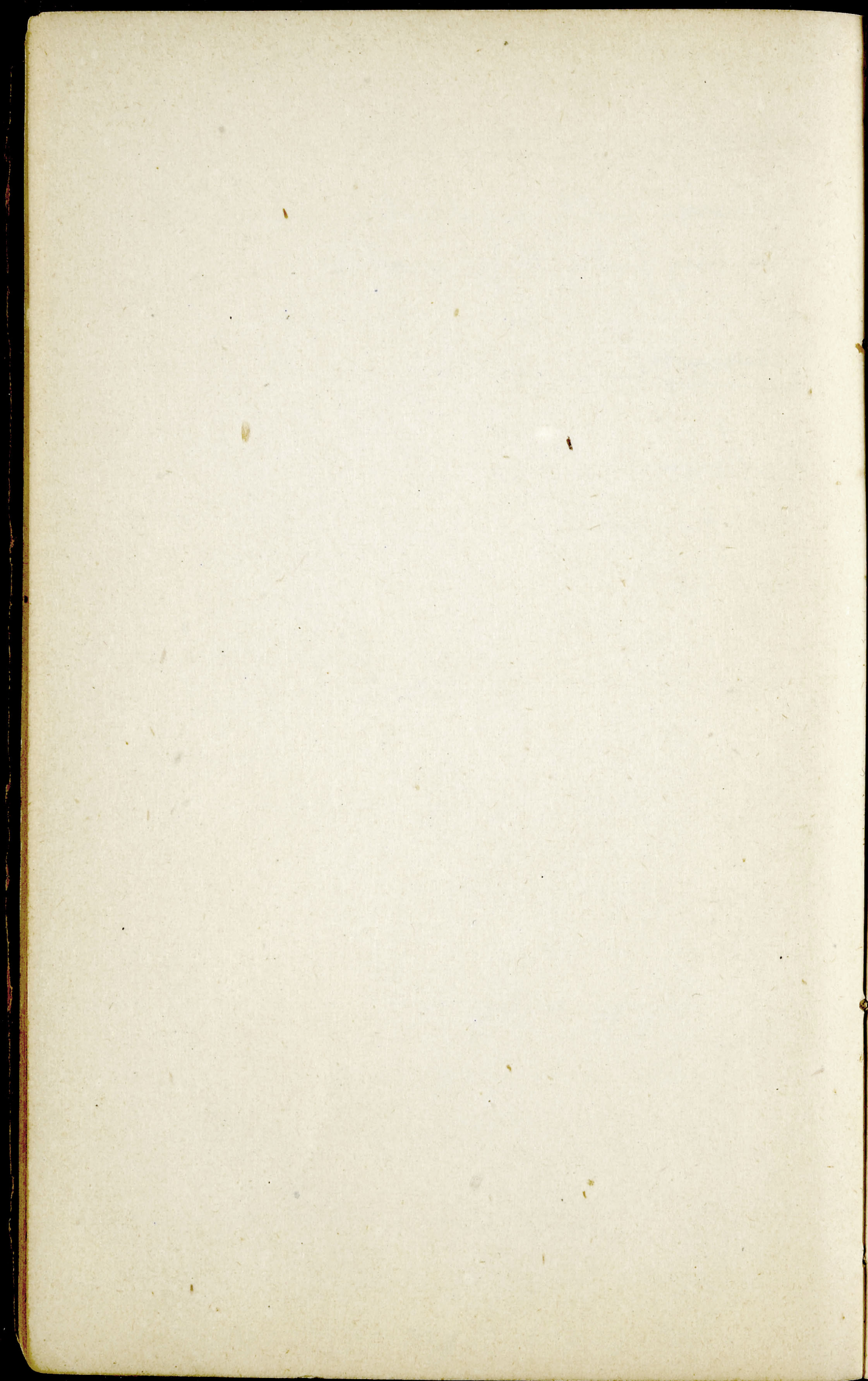
5/12/73

Phosphorus poisoning

In the liver fatty infiltration of the cells in
the kidney fatty degeneration

Pyelonephritis

Chronic



10/12/75

Sulphuric Acid Poisoning

1 a few parts

2

5 an application of the mucous membrane

Chronic Ulcer of Stomach

always a question in old time whether it came from
direct action of poisons or in the M. Membran

Cholesterin of brain

child 5-yr old
aphthous ulcerations of lips, tongue, in child
with & betide. can only be mistaken
for two other conditions viz -
Herpes which commonly is seen in other
localities as well, and Syphilis ulcerate.

* Erythema geniale in child 3 1/2 yr (L) lasting
for 2 years.

"Skin Diseases"

"Hebra & Neumann"

Pseudomonas vulgaris.

Psoriasis: A alkaline bath & then
cal. 31. very very 311

P. Erythema, non-vascular, & of intertrigo
when scalded, no bloody excretion is seen below

Ubra. Eryma. Therapeut.
near gloves it makes the hands uncomfortable. Some
care depend on the maceration of the epidermis
baths & concentrated alkaline solution to wash the
hands with (care for warm with. 20. of hands) the pain
of the application is not more intolerable than the
itching in many cases & ceases after a while.
The action lies in the rapid removal of the layers
of the epidermis.

Care of Palmar Eryma (man) ref. see Syph. Psoriasis
with it get red base when the scales are removed
the surround of the spots sharply bounded
It is in the peripheral gyriety. Nails
heads, in Syph always in the base, shrivel
in the epidermis turn away
dry. It perches. These cases come with
indiv. who work in irritating materials
in part. cold & by the acid excretion. This not
a spontaneous but a case of the sort. He worked
in HCl. Only pain no itching. Treatment
hardy gloves who covers the maceration of the cutis
= Salt ure. ung. Hydrarg. for 24 hours on the
hand cure for 8 days. then ung. Hydrarg. 31
& ung. Hydrarg. 37. ought to cure in 10 weeks
See any second day a rule in skin diseases. See
also the scales all are away, of many red points
& not. If found no

(2) Sy. coris
head, face chaff the head & cheeks the hairy parts. Few primary effluvia. Pustules on the cheeks, also on the head where the middle of hair falls when it is pulled out. the bulb is swollen and full of pus. Sy. coris is not confined as Sy. is to hairy parts. Sy. almost absent on the face, such as can be seen is very uncommon. The following are begun when it often dies. a primary eff. of head is rare

(3) Inbetigo (man)
Such as often prurigo. In old people rather succeeds lice. Itch. urticaria vesiculae &c.

(4) Inbetigo (boy)
Cruet. dark yellow color also formation. under col. only affect. upper part of skin of abdomen dark colored & with dark spots rather an old scabies or an Prurigo.
Some baths & appl. oil

Boy 11 years old. Cicatrices up the abdomen & sides of the trunk & back &c.
(5) Syph. ulceration. lower part of body, thighs and in the chest, wound with scars. a large scar formation over the out side of the arm & declivity in Lupus. Scar. spots under middle of thigh and abdomen covered with scabs. Lupus of the leg. is more extended. Syph. more local. They proceed from prurigo in the center of skin. Ten 20 years after scar. before each appears present in a syph. patient. i.e. Sy. cut. serpiginosa. Scarred out of 2-3 years. An index with the Syph. manner can of the child have no. Syph. they are commonly scarred. H. Cant. are with 10-12 days before the scarred out of 10-12' above the scar to scar. in Lupus after 2-3 years when white pustules
Lupus
This case Hebra diagnosed Syph. and Herpes Syphilis !!

(2) Eczema. of face returns a battle always in a given up person when such an Eczema exists one can always say that some external cause exists - either extreme heat or simple starch or wet compresses are sufficient.

(3) Herdman of Itch m m

4 Boy. Scrofulous infiltration of skin i.e. Lupus
Pustular in the under arm. All
in action. on the neck quite flat cicat. why
not kerfe light color but light red colored
is + in periph with crumts covered.
Is it by or Lupus? remove the crumts. flow
gradually

This
in childhood Lupus is identical with scrofula
12/1/74

Lg can may begin as an Acne.
and as an Eczema which however soon
passes into the pure Lg form
Parasit Lg is found from Knobs. & at first
in masses of the tips down in the surrounding
when K.D. is given against Lg can it becomes
worse especially if the body acne comes
out
when some powder is thrown off face it is apt to
cause dark pigmented scars.

Wundering

a group of individuals are gets - Prunus under
they have heard it as children. It is always
a Prunus accompanied by an Urlicium
(Lilium)

13/1/73

Prunaria vulgaris (L.)

Other names as Prunus &
Jellyon, affects the Schleifliche of the limbs
as well as this affection. When it is untractable
after the removal of the Schopen you do not get
the bloody base but an undecayed base
but the recent form shows this bloody base
Above this case on the abdomen, when a
Pat. is directed to Prunaria, in men. trauma
shingles is sufficient to create a Prunus. Same
with a Pat. disposed to urticaria when the
skin is stimulated. Also on the face. Of
the case but as a rule no slight infiltration
also in the Kopffont but usually after long
continuance of the disease. At first a slight itching
afterwards more. Syphilis is not the cause
fairly peculiar after cold throat have more
to do with it as seen in hundred cases
as I shilly. write more on

Prun of the head is always sharply limited to
the hair. Long runs over to the position
& surrounds

Exzema Capitis. cause. when only on the
head in a small spot of 20 has as it
only this or local cause.

of general & can among a constitution
cause cordial - Cause of degeneration of
usually in child of poor given up in girls
with derangement of menues, or in advanced in-
dividuals & scrupulous.
Local, & when give Fe. & out, with Leger
- Uran. it is a mitted, better than other oils
of. per. ac. & Fe. Carb. Sa. oute with
Zobertum to macerate the Rogen
While per 31 to Dub 31. ~~the~~ Do not put
the hair for Eczema

14/1/74

Syphilitic like Scrophulous. when the disease has been worked
into the bone it wobbles down again (Hebra)

15/1/74

Case of Rupia scrophulous. (man 035) /
Crests on the inner outer side of right thigh
lower part and on the front outer part
of left leg. flat not crusted, varying in
size from a Pelegros hair to half as large
again as a shaler, surrounded with
a reddened margin in which a few blood
could be seen. on removal of the crusts -
only a flat bare reddened area, no
loss of substance, in true Rupia without
exception. when the crusts are removed ulcer-
ation is present -
An extraordinary rare case (Hebra) 77th came
again much better but the fine appearance lost through
treatment -

(man)

Sycosis upper lip only & in more great infil-
 tration & hardness & commencement of thasis
 in the angle between nose & ear lip
 If strongly rub with S. oint. so it will not
 always, shave. 2. Draw out the hairs regularly
 make the skin soft first & it does not pain
 much at night he charrie in with pinure
 with a hair like light, ^{on the face} a dry brush drawn, albi 3. and put on true
 supply all day. St. Sap. bind. apply on lint
 18th letter

Palmar Pevriasis (man. 35)
 was in Hospital 2 year

Scyphus, tiloris, Syphilitis, would be disting.
 from it. (1) on the hand the sharp border is
 between in ^{as here} scyphus or if it has it comes
 from injury, or the occupation.

Tiloma. If one can occupy the with a strong
 pressure on the hand from an struck
specimens

Syphilitis alone such as upper joints. It usually
 form as in the a. S. Mac. or papules. May come
 fine white tubercles in a circular form which finally
 ulcerate. With the in in the mouth, loss of
 spoken or, and as there can often cure after
 10-20-40 yrs after primary symptoms

Treatment. There 7 or 8 appear. Can local
 be treated. Seven pain in morning. Put the hand
 hard glove & one Emp. Douch. & Hys 37 each on
 linen placed & nothing else, & in 2 weeks
 ought to be cured

Chelblain. (Chald. 11) Anarini

Fret 10-15° over leups than leups. Mostly
Scrophularia is usual individual. As will
in summer as in winter it may occur
often in the more. Sometimes adenocaulis
leads below first leupe of a few days even
which goes in 2-3 years.
Compounds. Emps admissum ^{and it found} some the proper
internally. & 157/74

Sublime Co. better for the leups which
scrophularis

Superficial have treated by scraping the reddened portion
away till quite flat and apply 3x chl. ac. in charcoal

Copiba ract after the use of Copiba resin for 4 days

Roreala

comes often ^{mal} when and then to do so are also
in 8 or 10 head when open about the small
joints. R. Syph. R. Chelca, in young ones
in open about in 2 or 3, patula.

R. Syphilica when pressed by finger, but
the spots remain permanent

Herpetoman macul, is always distinguished
by 2 scales being in the centre of the spot & it
layers in the periphery. Syphil. in other can
not in any way

When the induration of the head character
is removed with the elastic ligature
a smooth granulation is left & no indura-
tion follows.

Exema of the Scalp

To be distinguished from

Seborrhea comes in small ones in
sun up ones during menstrual derangement & it is more
limited & the glands are not enlarged

Favus also crusts, but the hair is brittle & falls
out easily & the crust are yellow & scurfed

Pemphigus more scales than Favus & always
sharply defined by the hair

Exema always grows over fine the hairy hair is gland pulled

Syphilis when removed the boggy part
is beneath

It is an Exema Boggy swelling gland

Treatment. many Bergam. Oil rubbed in
1/2 pint of oil a sponge & rub it on the head
till it is flamed & put on the head for the
repeat this ~~with~~ every morning brush out
the scales with a hard brush.

Exema of arms

Harsh & soap rub the soap in daily
twice & cold compress

3 iii Sapo. viridis for use

(Melra)

hard-crusty, always ^{come} a consequence of non-
soft chancres or nearly always, but the flat-
plaques, always from Syphilis, chancres
and a spiky crustiform (Tubercle)

The two cases of universal vegetations
Dr Prager & ~~Harold~~ both fatal
one not chancrous - syphilitic. The other
not chancrous - non-syphilitic

18th

Melra says that there is no better black
pigment for the hair than a burnt
egg. Run the comb thro' the hair and
then rub in the the egg well

He also doubts entirely the assertion
that hair ~~over~~ turns white in a single
night & affirms that it will take
six months to turn a man's & 6 months
a woman's

Sy. Angenita

first maculae, 2 perishes all
other ulceration. Bone off in the
first years, rare. May remain latent
& come out at proper, no ulcers on
skin or sepsis, or with them off
of bone. This child 6 years an abs
such as is seen found at
first a great rarity - a sepsigen
syphilis. Rare sp. normal. N. by
a loss of part - an ulcer in the part
a sharp boundary above the border
outward. There alone the Sy. in
Lupus, the latter in the nose. The
~~surrounding~~ never normal. Is it congen
or from contact? A carbuncle was
absent in the other nostril. Lupus
could not work so deeply without
affecting the other neighboring parts -
a lupus ulcer also on the basis of the
gummas, none in Sy. white. The 4 per
Lupus at this age, rare or never, comes
near the horns. Syph. is in each case
either congenital. When that has
the char. of

after some years, other eruptions then
appear usually come out later
at Puberty or before

Therefore, such as care with embrocation
on, & it is hard to limit it when the
eruptions ^{days} are death - red, even in 8 days
the whole up lip, & the nose, may be des-
troyed by this *Gonorrhea* syphilitic.

Best with *Kali causticum*. It calms well in
the surroundings. In all methods
of syphilis the best is unction. In the
a Hebraic Eq. also, when in skin same
small child give unction! (64) 12 gr pro
die. Very circum. & very. Circum mixed
out in skin. one day. leg. next the thing
see on thro. the limbs & body.

Eczema rubrum. anns. from washing

long. degen. 30

Eczema rubrum

Man 65 years age.

Thin red crust on inner part of the thighs
on skin given flamed acute. Other parts
to lined, broken - E. rubrum. Also small
rustles - E. papul. On sternum thin
thin red & excoriated & swollen. No pain
in all crusts on forehead when removed
also red denuded. - E. impetiginosum - the
three forms. One place dark red - this
though - the incubat in skin & tardy denud
in old people, while on sternum it is more
place red, than in old people. the affect then
differs. the skin is not excharitic

Therapies. Treat all as E. Rubr. after the usual
of crusts. No strong remedies - as I. used
with. Ziber. then on Carb acid. 3i. of Lec 3 vii
& ev. on face. get away the crusts & apply
after this has moderated haded over long time.

Woman 25. dehruvanga

21st

Syphilis of nose

Woman (52-5)

Impus. excluded as the nose is free.
Epithelium is also because the
surroundings are soft not hard
it is a syphilitide affecting the body
of the nose and the infiltration & leu-
ds on the cheek. Palate (S) and uvula gone
Jod. Kali 3ii. G. pul. lym. G.S. pills & cand-
ring with arg. nit. & limpl. Hyd. in the
nose. (To come on Monday)

Itch in a whole family

20 light cases, one rubbing enough for several
traces within 3 days take a bath

Slyrax liq. Hor Sulph. aa 3T. Cresta Alba

Sapo. viridis. aa 3ii Kal. Perm. 3ii

Not a piece the eye for crust in the hand.

Syphilis, eyelid

(39)

Woman in Hospital in 1865

An eyelid (r) a sub. lym. eye for large
pea & the serum deeply injected & puffy
cheek but fine lower lid
on head hair scanty & crusty.

Forehead covered with white scales
on head. Drunken & crusty. Palate & teeth

round. These can appear which
come out after many years
must use local treatment, with
Zuber's & let it remain for 1/2 hour or
1 ph Zuber's 1 per water for the crym-
tion. Besides there must give R. D
Dec. Giltman's 3 VIII
unction in this form not employed

14

Radical Escarapall

Escarapall

2 1/2 / 134

vesicular stage is variable depending on the
locality. if on the arms for inst. they last a day
or two. but on the penis or glans they disappear in as many
Some ^{times} ves in sc do not burst but after a few
days go on to pustules. This is seen in sterile
women at ^{the} hands. great itching, another
form ^{is} where a thick ^{crust} spread as a
hands apart. The vesicles may confluent
Edema swelling comes in face in acute
stage. of forming a mass of it. a thickening
ing of skin

E. papulosa a ^{varied} ^{additional} stage of the vesicular
in many is not a different affair
In kind, anem. indiv. scurfy comes
mostly in form of small bluish crusts
in groups. use tebetan & antiscorbutic
methods. often in older indiv. the
papules are ^{covered} with scales covered
also in groups. may extend peripherally
very little higher scurfy. Some in

adults

lenses kind. dark colour, or dark brown either in consequence of working of salts, as copp. vitriol. Iron filings or by muscular degeneration, which denudates much. the basis hard & papilla growth at margin.

Q. subtrunc a curved purpl. papul or veniculum. as a rule from Q. vesic. the vesicles burst. the bud comes forth on a green fluid wh. transparent in & contains no elements, in the head the suban follicle. a strong deposit of sebium & the fluid is yellow coloured & a mix of squamous or impet. dimid. papules

Therapie

Internal or External? If former in cases an. related with disturbance of inner organs often with a Magma Calanch. & can be usually treated. Intermittent also accompany by Sec. & treatment or change of climate it goes often in connect with diseases of sexual organs from man. In general in Secunda in which in the families the predispos. exists they must be treated internally. K. P. & Arsenic both of th. is not as good as Arsen. In doubt that there are forms in which it is hereditary. Here an. ob. obstinate cases. relate. often use. K. P. in them. or better Arsenic in Ch. 6 gtt. in gum up 12. - 20 gtt of 7 or less solution

Internal of the whole than perhaps
all from cold. In general E. is an inflame
of the skin which as other inflammations
Antiph is best. If one put compresses & draw
infl will diminish itching cease. The skin is
very vulnerable in these cases & abscess
come readily. If a local - face - enough of
cold compress or a strong alum & alk
in compress for inst. as some women of walk
hand water it becomes worse take

A. dis. or bilious water. In form of bathes
in certain form of ^{nam} or ^{tu} if it
is not spread or when skin is pap.
Pruriginous or itchy the skin thick &
give with Sulphur or Soda Carb. or Sulphur
3ii in 3ii of Hy: use a bath of 28° or of Sulph
and a Fleming's solution. Soda 1-2 lb in
a bath.

Acute E. in general not unite with ch. Take
a spec case a first with ton head. For some
week. removes. Take them away with
oil in 2 x hours. when more see it is not
another or by of acute find skin swollen
& moist use antiph. or antiprur. or
Alum. or Borax or 3T

Glycer 3iii

in the head
use till the swelling has gone (with cold compress
of ch. & thick skin either this. ch. or
or use cups as I would.

or Sapo. Make. Take warm water & rub
with flannel & rub in with the soap
till. Salve & For when not so strong useful
For when other strong strengthen
Labor in child. For in adult.

For Ear. usually symmetrical. In such
salve. Very Draught. in linen well cleaned
or fine astringent ity. Whole for xgr. in 3/4

For forehead. come drops or from the hairy
part or for irritator of the parts. Some have
a way as it. when put from this cause
use a Carbolic. plaster

Eye lid goes over the eyeballs also commonly. In their
water drops or astringent. many For in best. but
do not let it come in contact with the eyeballs

On Eyebrows spittle. salves. infuse. 21
is just like eye's

On Mouth. come in child & sagades. an
astringent of lips. very painful. a regular trial
with salve. Brown Diacetyl. so. in linen
& bind it close by band. 1 ball of head

For whole face. much in 2 years to diff. often
1-2 years. much. often astringent of often it is much
with salve in children with variolae

On thumb in leg. as a rule ^{usual} with
^{care} var. variis = Vane. ^{usual} For. ^{use} For &
useful. so. inf. thro. ^{use} For warm
water & milk. & rub in in a regular

app of eyes finally. Twice a day with
 S. ind. ^{saples} Ung. Diap. Emp. Dio
 Cyl. R. olive aa. p. aqua. Borax salve
 Bor. 3i Sol with g. s. glycer. Libe. ovalis
 Cera abla - aa. 3i. ol. olive. g. s. i.
 make a Must apply on linen & tie on
 line ^{edant} ~~ind~~ cannot bear Ung. Diapylis
 from pencils. or an antyzeem. other
 to use. also fat - not bone, some. Exp.
 instead use gly. & amyllum
^{make.} ^{as before} Ung. Diapylis. Amy. per 3i. gly. 3vi.
 can ad cured ung. then get an ord
 salve. Add of lile. zinc. or alum.
 others as an Ung. Diapylis. Spec. Cit. 3i
 ol. ol. 3iv.

In such an eye some other kept up, the
 part of the part must apply a roller
 moderately tight. If infib. ^{med.} not flannel
 but linen. When old people with S. ind
 be careful. get excretion & hemorrhage
 points. Must when perfect. be used as a
 Tan an ^{stand} imp. medicament.
 ol. Fagi. Ruri. or Caducei. The most
 consistent is the best. Has not been
 as much used as the thicker layer

on. If don't think enough, evaporate
or take a little any time said. When
out it is, not a time but a thick brush
when shall tar? when fused, in an
and after with no more removal
& a bit is not present, then use tar
not with Charcoal or extract, make
it over. When much disease, not to
put in all over, it is absorbed
of so, a dark urine comes, or vomiting
or tarry stools, as in Carbolic acid
7 take only small part at a time and
application of will soon go on in larger
part. It does in the skin, a tar layer
& comes out off, somewhat after 5-6 times
stop for a time. If itching, wait till
tar is cut off. If wish to take any, not
water it goes hard, but can, in alcohol
a bunch, dipped in alcohol, does it
In other parts of the body.

Psoriasis 9 years of quiet. longest 9.
his case is 15 yrs. Man, 45 years
plentiful on trunk & extremities of flesh
size of buttons. Not many Schuppchen
has been in bath, nearly all patches
of same size, seen on the common

spots of elbows & knees, also no itchy
therapeutic. find from P. v. punctata
inf with inner mean. an arsenic. get in
scr for 20, then back to the good soon
or arsenic alb. gr 66. an 800 pills. in Pul Sum
= Pil. arsenici gr 3-4. sup. + P.

Other us operat. Carbolic acid some
cases good. Acid Carb 3i. Alcoh
gall. 3i. G. T. Lign. gr 4, gr 6. pills
daily. Local. Comes it in single form
or deeper one grit form. also it thin
skin. thick or not, or not, an
ragged & white

Such a one. Da an warm bath scrub with
Kerriegg solution & after crusts. goes
in a bath stay 1/2 hr. Lather. then rub
not it in some places. one dg belly so
after. placed with Tan & set in for some time
dg. & without. washing any the to
put on the clothes or flannels
when in bath goes. Tinct. Ker. Ol Nuc
3i. Alcoh. ~~add~~ sublt an 3i. Ol Lavand
Ol Nuta Ol. Mam.

a Prev punctate. minimum of unpleas
as in women. another method

Talle a bath. & apply (Fluorine's solution
sulf. verul. ʒi lb. Cal. vira. lb. Agaric acid
5-8 lb. even ad rem. 12 lb. then (probably)
Difficult to use in private practice
Use instead sp. Saps alkali. not a common
flannel. but a coarse cloth or a brush
& rub in. Instead of Tar. also the
Ung. Rochal Calomet. ʒi. Zol. per
1011. gr. Sulf. Saponif. Ung. simplex. ʒii

(When a firm purple plaques, can mark
use Saps vint. sp.

while prep. ʒi + ʒi, of a good unct
of Ung. Rochal. If a P. variis, which
is widely extended, in many, use
the water cure. in water cloth damp
4 hours & cold or warm douch. or steam
bath & rub with soaps

When in single spots with few scurf
in ragades denture I. vint. (?) Use carbon
ball or curd of fat. Al. Leberth
or ordin. Saps vint.

If on P. differens. & deep ragades, put in
wollen blanket & rub in Leberth an
unct for 12 days. unct. unless there is
& rub damp 3 or 4 times in water

Eczema. side of cheeks. arising from

(1) an acute fling standing, afterwards a
debonhaea & finally an E. subm. comes
most commonly in young individual
& often accompanied with the same on
the heat-hairy parts. It is influenced
greatly by the weather. rare cases.

Use C and apply any time
70 cure in 8 days

Eczema often comes out symmetrical. chiefly
in young children as in the knee flexion or in
the care & account of Hagades. and also

in the thighs. E. papulorum. & place where
the healed E. has left prominent patches

treatment. O. Cad. & Cod. E. as a paraly. for the
E. papul. ^{2 a day apply} For the E. subm. in the knee flexion
apply fat. soap & vinegar in flannel. for 2 days
& change it to an acute Eczema. & then use
simple Ung. Dracyli in about four weeks
we can

Sycosis ^{ma} about the angle of jaw fresh case.

when found that remain part of skin in fresh
only one place attacked. not so intense &
probably that a stimulus has acted on
this one part. Prognosis different in these cases
& more favourable. only lasted a single week
this should also for a local schudlichheit
Pustules very evident a few crysts

are Ung. Dracyli. to remove & remove the crust
till further treatment.

Sy. w. is both cheeks confined to the hairy part.

Thick crust disseminated. skin thick-
ened a long continued affection. Must
shave w. of head long. cut off with scissors
and apply warm compresses over night & then
shave in morning. cure tomorrow.

Lichen Syphilitis almost disappeared. had

Sy. last December. an acne on his face arising
from the long use of Job Kabi.

Pigmentation of his stomach & buttocks in small
patches corresponding to the set of hairs
& sometimes arranged in groups.

Lichen planus came then sometimes. when
a tick syphil. the cure of the lichen are
pigmented so.

To continue the Job Kabi & Steam baths.

Favus getting rare in men. come from
Follicular crabs all gone. only the sharp
defined. bases. left. 11. cur. 31. **3x** of
water for a solution to assume the hair
in. Fish cur. the liquor is yellow. gold
color. The old people made the drug
of the smell a mouldy one. under

the fungus subtending outburst of hair
continued. If short time not only
the hair attacked, in the spots when
the hair comes out a small Kern of
of pure head & round this the Fungus
spreads, it is penetrated by the hair
7. elements called when long enough
open the cavity left, prevent the
growth of any hair, but if a short
time last, no loss of substance & the
hair grows again
than little & at a pace the fungus
elements are found
Sometimes in the remaining skin it
spreads in shape of Blaschens or
H. transversus, they penetrate a
slight distance between them & H.
transversus. This in the woolly hair part
in other spots, with the hair, & tension
in places, even as in the hair
(a case when it was in the whole skin
(on skin) yielded a fair spot, spread
the much, comes also in Animals in
dogs, & mice in rabbits
what is the fungus? Schumler discovered
the elements first in 1839 & was called
The Achom or Schumlerii O. lactis, O.
& the first one, the three forms of Oidium

Psoriasis a sick. Psoriasis is deficient scales. It has not a sufficient amount. Absence when taken a long time ago.

Psoriasis commonly produces pigmentation of the patches a severe fever will cure a Psorian usually by diating by derivation all the non-venereal. Chiefly on the legs.

If some this mean a Fleming's solution would do harm. Give baths in these inveterate case & perhaps give in them of Fagi &c

28th

Erythema nodosum

legs & arms plain size of table, red colored an infiltration in the spots. looks in some places a little bluish green. Come in young individuals, children, with bluish green patches, often find swelling of the joints & eyelids. Sometimes chronic, nodular changes, or pain looks like an Erythema. In the summer when a cutaneous come

Eczema of left ankle & back of foot - connected with varicose veins. Develop the herb & apply Ung. Diacyli & change ev. decy. do this for 8 day, when you might be cured

Tors phan

exclude. Herpes tuncus I will see again. Eczema. It came again farus. It came again also. Also

Soon after acute disease. If cure excluded
- there likely to go. Usually accompanied
with a Schuppian formation a Seborrhoea
Alcohol 3 vi. gly 3 ii. for a week

Syphilide papulosa form man splenetic case

7 hrs mouth ill. still a little indurated
in the prostate. A Rubo. suppurating
all over the skin of belly, chest & back. chiefly
legs & arms in a less degree numerous papule
those on the belly & chest covered with scales
& somewhat pigmented. Those on the back
arranged for the most part in groups
situated longitudinally about the size of
a shilling encircling of 20-30 papule
Had his chancre in November. Pungent
of the parts most affected than the straggles

Psoriasis vulgaris remarkable cure (28)

affects the skin about the nail. around palm about
4 inches in diameter. covered completely with thick
scales - an elevated slightly thickened patch. Also on
the Pubis, penis & scrotum also between the fold of the
testicles. on the head as well
First. the fl. quite free. 2nd it once
stump spots was attached. - a great rarity
another in last year that a few grades of Psor
& great itching so form on each spot when
benly. on the Psoriasis.
Has had the Psor. 6 years. at a few patches
also on the seen in the back

app. Leberthian in the spots shade bath
daily, same with the head, before begin
internal treatment, afterward tar bath
take & pencil the patches with Ol. Zagi
& Sapo vnd on inward app. to diminish
the thickening 29th

Molluscum sebaceum

Woman aged 23. Many tubercles over the skin
in a pea to hazel nut. part, color as the
skin part. dark col. part.
Some elevated in the skin yet & others
them healthy & smooth. but one or two
comedones seen in them. The swellings
are soft & if press get out.
When the Galymareu collect in the follicles
& get brown on the outside - a comedo
Molluscum sebaceum: if small or if get large
Molluscum sebaceum. if mixed with much fibrous
tissue.

Syphilis papulosa a virum 38. married
seven years & ch. dead. Small brown coloured
papules covered with a thin epidermis
arranged in a half circle form, affecting
the cheekflaps of the anus. This comes often
in old people as one of the first appearance of
Syphilis after even 20 years of married
life & after having borne quite healthy kids

Acne rosacea . has strongly reddened, usually

two indented vessels & no matter how strong one
pours a yellow colour

comes chiefly from drinking beer & wine, the latter
chiefly new-brewed & Schottopps: Some who drink
too little & get bad nourishment, often
a poor student, acne first as a sebaceous
& then a redness forms & then an acne
rosea. Women with sexual desire, or starting
acting the vice but the cheeks also reddened
men's diffuse redness. Chou maguer colour
produces it. Disturbance of liver. Piles or
may cause some acne with adenoma
of face & eyelids.

Every evening take a warm bath & put up Sapo
in it & rub it hard with it & then take this
salve. Ureth. Juice Berg scrub in

30th

Eczema actutum subtile

under stimulus & up to the nail reddened & run
mouth scratched. This must also. The crust
lands swollen. On face, neck, & diffuse red
in face & hands. When acute is sharply bounded
in this way it speaks for the local origin the
same schachtelheit. On face & neck also wonder-
fully bounded. Different forms in diff. spots
can with alcohol & Carbolic acid. If ven gall
3viii. Glycer 3f. + wash 3 times a day &
then Water any time will often make it disappear
or disappear. When skin inflamed not go
with this method but if not strong with

is not much itching. Example method will
do as open ceta & oil spread on it
Rub in the above fluid 3 times a day

(Come on Tuesday) Feb 2 much better all ulcers gone patches
only in the hollows.

Eryema marginatum

On the inner surface of thumb when scabies
comes skin redness seen the periph. it
is bounded by a hard raised rim with scales
all centum. Form an interesting part by exam-
ing. Same way comes in fat children. When
works long time skin gets infiltrated & covered
with scales. Erythema rub. when out, red
when with scabs on Erym which
often in children a diphtheria process forms
at these spots. In persons who not much
then very common on the scutum suber-
ling center. In infiltration & scales. when
it when any parasite from outside or
any external schadstoff. so comes it
to form it is not sharply bounded as
at first but it breaks out & found an
Eryema marginatum. These spots form
a favorable medium for all these parasites.
These parts spread by vesicles in a grayish
form. Another form When tumor
either on skin of flesh or circles comes out
in such a part when an schadstoff out-
let. It goes out from the tumor & an

after if some schodlich & it develops then
as a severe haemolysis. When first can
find the Pity elements when old other skin
infiltrated cannot find them

These cases are tremendous obstinate
relapses come often after the place even looks
quite clear as some remnants of Pity elem
remain. I use a rubber but change often
the only make it more. Take care that the
amylum used is pure

Amylum in alcohol for 24 hours, then dry it
wash & bathe every day

Acne dimidiata

very bad case, covering the back of face
No good. Calling such a case into the Hospital
though could cure in six weeks, yet a
recurrence would be sure to come or perhaps
as bad as ever

Care of Psoriasis vulgaris over the whole skin
diffuse & singly scattered. Not very old
Prognosis is favourable.

warm bath & daily rub with zinc ointment
at 3 hours in a warm bath (28°) when com-
e out it remains - the tar - still on the skin
pencil again with zinc ointment & wear flannel
Face. soon healed. singly. Sp. tapes all
& very simple. You had. sufficient
& very. of a relapse. - which is likely as in
all hereditary diseases - as in Ichthyosis
which is only a skin form of this disease. Must
wash daily, all over & once a week a warm
bath take with Euphrasie

Care of Lupus a woman

1847 & then

First heard in 1854. & then in 1869 between
the time well. Now a relapse. Many ulcers
& then cicatrices, then the length of time
which it has remained & not affected any
but the face. Nose put & wings quite gone
an Ectropion from contraction of cicatricial
tissue. also the Zahnfleisch destroyed by
it. These cases anything rarer

pr
82

Lupus hypertrophicus

Young man 22. An acute

degenerata on back. On the right foot, back & sole the nodules form diff. growths in it which with nodules are covered & these crusts are covered up with pressure. Some more as diffuse nodules. On the foot sole in the center a nodule & in the periphery the same nodules. What is this? If we take nodules alone would say an eruptive form with nodules covered - a growth of the papillae - nearly growth. Syphilis is it not would find more in deep. There below

a Lupus & a Papillary growth - a Proliferation growth an hypertrophy of skin as an Ichthyosis but comes usually over in large surface. Most think of Lupus - a maculosa or tumidosa. Lupus does something does developed such. Nodules it is especially in these spots - Lupus hypertrophicus comes chiefly in the toes, usually in early childhood. Keep with Rub. causticum or Salvaem cantury. K. Amer. at 21.

31

Aug 31 on lines, for 3 days & then remove before using remove the nodules with oil & pencil. Must protect the covered wgs with plaster. If well covered with Rub. caust. can succeed

Eczema marginatum

4/2/74

Ry Acidi Carbonici 3ii

alcohol 3i

apply to the spot.

It attacks women sometimes & in both sexes is characterized by its remarkable obstinacy & tendency to relapse though when fully developed it looks & is in its essence precisely like the terminans squamosa yet - the long obtuse curve of the one of less & months & the short & deep of the other form a radical difference between the two.

Ichthyosis an enlargement of the papillary bodies & increase of the epidermal layers

I. simplex see only polygonal spaces in which the nuclei of the cells are visible of sp. thick & of greenish colour. thin

I. serpentina, ep. more thick & of diff. colours, & lastly when papillae are so great that they form projection in the skin called

I. conglobata or ichthya as in epilith both when a child has been neglected

and not washed the ear
due to these forms large scales the
a purulent form of follic.

In simple cases the floor surface of the joint
the penis of ure are full. These cases
are the most common

Syphilis of the nose. (woman)

The nose very reddened & a slight soft
swelling no other change seen. In the
nose M.M. a sub. ves. a sharply defined
Is a Jan. a Lupus a Syphilis
an abscess when one - two days last. painful
simple. Lupus. before it - in one part
under that build. It has lasted ab-
sent 1/2 year & ever the surround-
would be affected

Syphilis & a Rhinoma scleroma. a peculiar
affect of the M.M. spine Palate & can
with the Sarcina

Can be nothing but Syphilis with much
a sharply defined ulcer & the Sarcina
& would part altogether

Is it an acute or congenital. Not a
recent form as the same & other show

Eczema acutum face ears & right ankle
all four existing. also itch present
Does the l. depend on the scabies. In
the face, no gang, on the foot he has
laid benumbed on with some plaster
& caused the Eczema. Arnica treckungia
use to many cases of Eczema & not only
in the place applied but a wider spread
one - on face &c. Not unimportant
the etiology for the prognosis
Terebinth with Ury against
the scabies & use Ury Draculi on the
face & ears against the Eczema

Pityriasis versicolor, differs from Cloasma
in that when you scratch it can be removed
Palmer's remedy better. No itching
Come chiefly in countries where flannel &
woolens are worn next the skin, when
it has curled long usually a little fragments
beneath. Ury. Carb. scab. 7 for supp. of
Rusi aa ʒi. Coal alba. Sapo viridis
Ury simple aa ʒi. Nat. Peruvian ʒi
Take a piece the size of a walnut for the chest
& another for back & rub in & when in
3 days when the skin is sparingly no matter
continuing the rubbing for 20 days & then

for two days continue to apply the salve
but without rubbing in & on the 9-10
day take a bath

6/1/74

L. rubrum ^{in head} only in grown up persons when
in the head & mouth. can you use Tar
of use in children & women in the con-
dition you are apt to produce swelling
and suppuration if the cervical glands
Sp. ven Gall 3M Gly 314. + use. after
the tar has been employed for some
days & afterwards with amylin powder
Borax alum aa 3i. Gly 311. is good
also. at first period 2-3 times a
day with the tar if well borne continue
~~to use the tar~~ if not well borne use
the Sp. ven Gall. Gly

Eczema papulosa.

along the inner surface of the leg.
Wash with brandy & the powder with
meal or amylin

Prurigo

Dark pigmented belly with scratched
knobs. On legs a brany looking effluvia
over the skin & knobs also. and when
feel fond skin thickened & infiltrated
especially inside. Have to decide bet
Pedra scabies & Prurigo - the three that
pound these excoriation on the skin

Pediculari - the recurrent longitudinal
Scuties. It is pigmented too. but look
at the hands but may be a ^{only} residue
of it & then difficult to decide. Much
the credit of leg. examiners will not
be such thickened skin or covered
with brown powder. Again the au-
cunious. The history ask probably find
it has lasted from childhood if young.
In axilla often find great secretion of
sweat in great drops. There are secondary
appearances, but always. It begins with
wh. the disease begins on the stridilla
dorsal. It starts, commence. they be in
the skin & cause very great itching
In young person the Itches mixed with
urticaria patches. When Itches, not scratch
they paralyse & enlarge & heal & form
Borhen. or it may be complicated with
Eczema. (when long standing find
all evidence of pigmentation chiefly
on the trunk)

7/1/74

Sycosis: Is a phlegmatous inflammation of the skin not a superficial one. Other inflammations as Erysip may attack the spot - or it may become scrofulous & must not be mistak'n for Syphilis

Syphilis

Primary & second are alike in their nature & even in their course. Only different forms of the same affection
(Chancres & sores. when infect himself of inkerful parts get a soft, if in the deeper parts or hard one)

9/2/74

Prurigo & Lichen urticatus difference

Lichen urticatus. no itching. localized affection or if general not specially in the structure. Sometimes not so general & it can be cured. Pustules & crabs never come in this while in Prurigo they are common

Eczema rubrum (man in 5-6 pages back)

came this morning with an erythematous swelling over the body & altogether much worse
jacket & hose of flannel & rub the body & legs
morning sweating with Zuberthian & ol Cadini
at page 2 perhaps as acute appearances
in some parts are not so. As in

d. Jec. accl. $\frac{3}{4}$ r. i. Acid carb 3T. musc.

sapply softer powder with Amylum

Acne disseminata & indurata

over the whole back & numerous
comedones scattered between them
To calm the comedone. apply oz cups

all the indurated spots must be seque-
strated & give. Sac Sulph. Gly. Alcol. ^{cal. carb} ad
pt. oz. in a Hemmer's solution & rub
in

Eczema marginatum

Herman has had a case of H. tons. in the belly
and 2 Magnin in the same person

Carbolic acid 1 to 100 does not destroy the
virility of the Ptz. element must use
a solution of 1-50 1-60 ac

Eczema face & arm. on the face. much
irritation on account of the numerous vesicles with
inflamed bases. crusts thick firm over. healthy
Sufficient to apply cold compresses

Syphilis

scicatures in many parts, legs back. all
of Lupus Syph. Only 2 years since
had a chancre

Purpura rheumatica

on the flache of legs pale red in
marked spots which do not character
in persons a few in the belly 7 or 8 spots
always with pruritus. here does not desuff
have to do with a haemorrhage or fragment
ation. A cure of Purpura. Several with

P. simplex. some people have these
on the legs spontaneous & go on 24 hours

P. urticaria. some pers. in course
of year. outbreak of system especially
the stomach. get urticaria & under
these spots see Purpuric spots.
a Purpura. rheumatica or Pelionis when
comes with them. The red spots on the
at first partly disappear by pruritus
afterward not. but the stiff powder
of haematine are seen after found all
in urine with this.

Purp. papulosa. on legs spots (back) in
cubic vesicles under often differ sept.
Knotchen. this a haemorrhage which the
spid is succeeded Knotchen

P. variolosa. in these cases, unless few in
in skin may put haemorrhagic blood in
other organs. in Hodgkin's cells in erythema
they usually go to earth before the eruption comes
out. P. scabritica is also another
form. P. stern comes in young

individuals. They are often arranged
in groups. Not of very much importance
at all, you but keep a permanent
presence, it comes as a chronic affect
in different mental, in addition

Carey scabies which had been cured
I had left the tubercle for 2 weeks
returned to the with a branny, looking
on the legs. the skin which is also strongly
distended and itches much. The question
is whether this is but a residuum of lead
or a Prunings. Many a corollary of Scab
yet remain, & some on the back than
the longitudinal arrangement of Pecten

Lymphitis of nose

A young man, nose much swollen
redness at edges of nostrils, and the
inside the septum is gone & ulcer. present.
Either a Lupus or Syphilis, which?
L. not in an outer but in the inner
bone & in the. Lupus near powder such
a case needs to leave the outside intact.
in this one found that out the Lupus
what from 8 & when. Cure, soon after built
as Mac. Pump & Pal. when after built
put 3 in skin also with 2 in of the 20
when later 12-14 years then on under skin
in deep ulcers, in which, in given over
shut in nose, lips & for men

Process is small in a few days, depending
the more. Such following again repeated
accumb with some disease less of than
with a tumor. Larynx. How then it
is a congenital? when found such a disease
in 14-16 years or young under when
girls, not to think of acquired.
Ch. syph. infections may involve be caused
of a healthy web membrane & when the child
suffers the disease usually is by phthisis
Peripneumonia, when with both joints
swollen in 20-30 days, but membrane
& Papert form may subside. Membrane
throws but one case of Peripneumonia, common
by a course of irritation, always the best
when from the birth of ch. 9 days & intervene
a favorable prognosis. The irritation
flurba of not noticed may destroy the
more & not notice till it blows out.

Scrophulous ulceration

Worms in the left breast may ulcers
barely when parat. & the border, sharply
defined. Also a spot when an abscess is
scirrhous also, parat. into the breast
under the right clavicle outward, a marking
depressed. What is it? There is the scrophulous
a L. scirrh. or Syph. Lupus never in
this way bare of ul. in Lupus. This held So by
Stam. undetermined, also found the exact spot
& gland on a side speaks more for scrophulous

But also in S. copy. since it seems that
Quina purpurata, but this exceptionally.
The one open ulcer spends for Syphilis, but
the rest of the eruption & other spend time
for Scrophula. Part with 1/2 inch & another

Acne frontalis vel. vicia

Acne of forehead nose & chin. along dorsal
Mudchen, purpurate & by to border & when
remove get a subtile loss. along by women
with deranged menstruation. May
be mistaken for Syphilis. Occurs by men
in derang. stomach. The crusts the redness
at their bases & when they are removed the
subtile loss are the diagnostic points

Lupus erythematosus vel. cap

On face, cheeks, thin white scabs, shins.
are on nose & cheeks chiefly. Cannot drag
from face but can from the situation
often. There are thin scabs & surround
very normal thin skin. They are the most
of L. erythematosus. In the case, are num-
bered light brown spots, in some more
reddish brown. From L. vulgaris must
be distinguished. From on each of
hair follicles small red pustules, which
have red borders, epul. ovaries.
accumulated about it, when removed
along undressed follicle. Reverse

evolution & from patches into entire
periph & heat centrally with a thin
hardening. The circles merge & agree from
as in *H. tenuis* & in the middle
either, oval or brown marks
when the same or other glands have been done
the skin presents the white unclastic appearance
other parts, all over the head, & fingers
than falls out & hair follicles, undivided
& covered with scales & same eccentric
form. May also ulcerate, on haired back
from great boils like Penicillium. In winter
ment, common of the legs affected, & with
epiderm covered. Comes out before the 20th
year & most in females who are clothed & are
why call it lupus? & a I come from the hair
follicle & glands why not sebaceous. When
the disease is bad, find the disease
are done but not increase secret but diminish
shed in *H. vulgaris* have in cutis various
growths which pass up the the layers &
are seen as 'flecks' in the surface in *H. Engl*
find that this the sebaceous glands, not mixed
with the same growths who come from the glands
The same cells as in *H. vulgaris* same growth
in one more differ in *L. Eng* more locally about
the sweat & sebaceous glands

Progress. It would rather be a I and
of the whole form that *L. Eng* of a single
spot as *H. Eng* is it. The disease is very

variable treatment. Must treat internally
7c good nourishment. Coler. oil or
local use melted wh. open the follicle, either
caustic or of rub in Sap. red 3i

alcohol 3i filler & add Ss. Lavel. 3i
- Sp. Sap. alkali. Take a flame & rub it under
skin it opens the follicles & after it use
Pre. alba 3i. Use sulphur 3i, or Urey
Kochale. The other method. Or it after the
Sap. red is in it till inflammation comes on
with flannel thro a whole week apply
in single cases caustic, & use Sap. inf.
inf. a solution, but spirit. put. powder
a round with S. viridis. Use apple &
Carbol. acid. penciled in sit firm no. occ.

" " & alcohol two parts. equal
pencil in the skin after the application of
the S. viridis. Chromic acid & HCl. use in
long time 14 days between. Kalk can
with 0. powder equal. leaves no thick
subst. & the acid is thin & can use it
very two days. Also means for about
a long 1/2, & Jud. glycerine. The latter pain
ful especially if used after the S. viridis

No other lesions in the Super. are attacked
not in the more ever destroyed. This can
be remarkable for the fact that he was
but attacked in his sixth year.

Lecynea rubrum (see last place book)

Better than ...
Now ready for use. but as do not know
whether it will be well borne use it only
first over a small surface with Oleo cadim
when it burns too much just apply a little more
I better in out-patients to use ammonia with
12/13
12/13
12/2/74

Lichen ead rubrum

Man aged 33. in though same as cutis
american. size of pins head. At first stand single
& after a days or two become covered with scurf
in this district from Prussia's which even
when present the same effect spread peripherally
in this the disease find other Knotchen many of
them broader than neck to the middle of thighs
sally find on the periphery the Knotchen. May
times of skin on the skin & much inflamed
also if in a high degree cannot move
without great pain. Nails also attacked.
Hair falls out - if take out the Knotchen, the hair
falls on ground & the mean is in the Hoarholy
& sometimes in the glands & get the charad.
from acinous gland. The cells of the Hair sheath
proliferate greatly, project out & look like a camp.
and gland. Vint pulse enlarged. But a few
do. now called Lichen. old Pl. named
many so. Two more. L. scurf. & L. rubrum
L. pilum. & L. suba. oblongus
L. vertical. is. Urtic papulosa. At two

time. Huber's. Curious in given up healthy
persons. Of ten women, Ch. rarely a
single case a woman. an acute fatal course
in the Cranberryham, even in the breast
& other parts & thro' a purulent Puer
in ground. going. In long steady the
firmer get so deep that pharynx is lost
in the face - the old Sclerema. Cannot
shut the eyes or show the mouth
It is healable disease & the inner use of
arsenic. must be in larger doses
be begining 3 areale pills after eating
& then increase gradually 8 - 10 - 12 pills
at first. see in months but gradually
in 4 - 5 months a cure. Pigment u-
mucous behind after the cure with Lich
also see the same in Psoriasis. Must also
local treat. warm bath 3-4-6 hours
& powder the skin before with tar. or
water alone. of sagradas no tar. no soap
of. for an. foot. & after they droppe their
tar & baths. In use of Arsenic three decidua
mg. after increase in the pills to 10-12 a day
or pain in stomach. occasional vomiting
spasm in the joints. H. has seen only one
case where 20 pills (grain) = 2 gr. arsenic were take
daily by the patient. She got a fever after it
but sheath. Typhus or Arsen. poison it could
not ascertain. The true disease which in
their general manifestation may be understood
or one another as Psoriasis. u-
mucous

Lichen ruber & Pityriasis rubra. In this case
of arsenic & Radon. chlothy used
using Caomach for this man. Arsenic in this
appe. new marks before dry weather.

Proriasis

Rapidly nourished spots, well diffu-
not much infiltration. of let remain in bath
alone & rub with a brush or subsack then rub
sp. Sap. alkali & when come out of bath use the
Ung. Rochade. not the whole skin but single
localities at a time. & used an Ung. Beom
for the face.

Syphilitic infiltration

On the glen margin & right shoulder. cicatrized
& fresh infiltration about them. The cicatrized
left by the use of the caustic. an apt to be by
& strongy forces which is excluded in the
in the face.

Ung. Glycerum) (3T. abnlyum.) 3T. gly. toid
to the crumbliness of an ingredient.

Proriasis (See 28th Jan) Has had a course of
I mercurel. 2 a day for 8 days then one a day
& now has the soap on his head & face with flamm
and the point about the navel is still much
infiltrated.

Syphilis

Range Chancre. Three months
ago. General by follows in form of ulcers
Chancre partly soft partly hard
after a gangrene was given no system cure was
followed. Soft Chancre a part. In a soft
chancre was created & healed & after
1-6 weeks found a macerated syphilis &
see the cicatrix indurated at the base
the perfectly soft in the course - a
Ch. more

Pityriasis

Man 40 years looking 60. Skin dark
red brown in face, other normal coloured.
Many wrinkles in the face, slight atrophy.
The vessels under epidermis were red & pigmented.
Skin also atrophied. There was
also slight macerated & there the skin
in wrinkles. Pityriasis red for many days
when the skin was off the head as usual
as on the head. A Pityriasis in form of
P. versicolor. On neck epidermis appeared
with redness of skin. On the nose Pityriasis

Pityriasis sub some bold redness with
E. squammosa not so. Found. Under
light red colour & it is with chapped

small & shaggy naturally, when
detached come again. A diffuse
inflame of skin is possible, or the skin
Generally over the whole skin & parts
the whole under is affected, as well as
appetite. In the Bengal fleck the young
are not even with shape & nodules
all made under the skin in young
in this. As for instance 7 or 8 the left
side shaggy, same with some
only the water med. bath of fat we
treated, arsenic with local use of
fat. This case somewhat exceptional
has lasted long & gave all the course
inter consequences. The fourth case
in 1870 new man has seen

Herpes tonsurans & E. marginatum

Patch small size on the upper part of left thigh in the center schuppen & blatches form themselves ^{round it} in the middle the skin is dry. Blatches stand in groups some called Herpes or the head in center & outlay. periph. & called H. tonsurans. Courts in the center here not schuppen. It is an Eryzema marginatum. It does not develop as in another place. Not yet an E. margin till the ruffles has passed the limits of the contact of the scrotum. How arise? same cause which cause all Parasitic eruptions, the the Liberosche or if it gets damp & cold in the scrotum then Poly element form & apt when the clothes put on to get H. tonsurans. Comes out chiefly in hairy parts & smooth. If latter ones pale red surface in center dry & spread in periph. the macules. Occur as blatches on Herpes tons. verrucosus. They last 2-3 hours. dry & new as formed, & a H. tons. squarrosa. Structure as Herpes tons. verrucosus & they come also in cricles in the hairy parts - a head. then not blatches only schuppen. Hair when Poly grows breaks short. It comes seldom in head but if spread to the face spreads out as Herpes tons. verrucosus. The maculous form has a great resemblance to a macul. erythematoid. Also when occur in H. tons. verrucosus center thin scales form in center while eryth. out. infl. in the skin may be pigmented up any scales or on a very wrinkled skin

7 Herpes. on the Poly. in the 2nd. of sub.
I off with sap. vis. in a central sarcom
of sap. alkali. in a flannel. sure an
ing. simple. of widely extended zone
a bath & one the Serp. in. & an ing
embolism. in ca 3 1/2

On the genital & inner surfs of thighs
& 8. My comes out on these spots as by
dark & constant neura. after a three
month healing & great pain. return in
24 hours. Cause in in Poly nature in the
other orange in it. when they get in the
hair bulbs. & when the gonorrhoea vesiculi
few number remain. suffice for a while
somewhat else also. Bacteria & vibrio Micro
cocci. There again for the am overgild
cell from themselves

Herpes tonsurans maculosa unicoloris

Thus cutaneous. This patient presented
the appearance of me suffering with a macula
cytobulb. inf. in some spots under glass
macules than other were in the center
covered with scales. It was undif. diffused
all over the trunk. Use the Ung. for
six or ten days & then just take a bath after
me. H. N. S. S.

Telomina

In palm also yellow band subder. also
of this anflage of Epider. = Telomina
the the person arises an inner in the
layers. Looks like a Pevr. spears, but in
the periphery always the gya find. Also
the parts in the latter are attacked
Painful at his work. Hardedshwa to
be worn of caouchine. Food also in
E. of hands. In the E. of hands. often gils
with them.

Legumia papulosa & mycetozoa

The former part all over the body, & one
" a spot sharply bounded in the thighs
of the umb. skin. It is more of a local
disease here. I can not remove with
for instance. Smear with put in place
the 24 days wear on of guttae, with
Nat. cur. & after at per ceptum in
Collodion. Cell rupt. at 3h. Corom.
sublin 3i. orise. supply scarie
no pain. & the epider. is raised in
bubbles. The feeling of burning is
much preferable to the patients to
the itching. The former is cured by
the Nat. cur. Saper. volutini
not good for them. E. must. but Nat. sd.
also good.

Urticaria

Third time - 1st evening & days second
3 days. All over the body except the thighs
when there are Pimples. The dawn is always
more than the depth. Differ colors in
the periphery. Took mercury even see the
open of the glands. Brandy & sponge
the body over saffron emulsion

Eczema cap. middle aged man. Extended
over the forehead & ears. deep redness
behind the ear & cervical gland involv
ment. Very dracoph for ears. Hoff.
Separate some of the scabbies & see
what underneath & found the skin yet
moist. Death emulsion. for the re-
moval of the crusts. use with a sponge
& put flannel in for the night
after this use 2 or 3 as fast. for I now
another case on above, only more pustular in
character. Very dracoph for ears or Very
Mercuric. St. Jeon Anelli for head use for
some days. afterwards as much as
possible use those too with alcohol while
in the former case infiltrate till present
are the same too

Eczema universale

Child 4 years old. with Prurigo
embred? All over the body. no Prurigo
or skin is very soft & elastic in circulation
& no blotches. use Very dracoph or
linen & apply flannel wet

Arzenical paste, 5-aren; 15- Symploc. 125-

Foot: The only parts of the body that H. meso-
are a disadvantage in it is that it does not hinder
the surgical part - when used in summer
it leaves a good flat scar behind it.

Couchon garments most useful for all
these chronic incurable skin affections
as Schell, Prun, wear them in the night
and wash in the morning, & then put on
ordinary clothes in the day time.

Favus & other Parasitic affections, use the pure
carbolic acid, neither is not much good.

Exema capitis, local, confined to front part
must distinguish from Seborrhoea
when Eq over whole head generally, a
cont. of local & local cause & as a
rule, Ped. cap. & find the key in hirsute
head & neck. In front it may occasionally
does follow a Seborrhoea as in this case
Healthy strong chl. are as often or often than
weakly ones attacked; Exema. Not likely
that heading any E. cap. ever causes meningitis
of head, wet & ch. weal & have enough such
a one must be treated differently from another
as with Emulsion & Scrupum. Let it run
out as long as possible, take 2-3 months
for the cure i.e. not with salves or plasters
but with seife. Here take Lebrithan in a
sponge 2 in 24 hours for 2 days & then apply
the salve. Ox Zinc, Pl. Carb. aa 3ij.
Sepena 3j. d. olivum, Su sativ. trouble a little

ing. when get the cream rub apply 2 or 3
in these kids but contain the salve or fat

Impetigo in adults always a result
in various influence in the skin
as for scabies, Pediculus, cold, eruptions
irritant salves, damp dwellings all
cause it in adults. also in ^{leg with} varicella veses
leg. One species of impetigo. Some dis-
solved in water to ^{admix} water or given upon
the kidney. In consequence of Diarrhoea from boils in
in the thigh. some Pruritus cut. until
itch. & recurrent from & also come with
it Impetigo, broad bladd & Pediculus
from ... I may form a deep ulcer from when
last long

Hch.

Flor Sulphuris 3 ii. Ung sulph 3 ii. Ros
Prun 3 i for a ch. 3 months old
4 times altogether let them bath & with it
is healed. The art of eye use. Ung sulph
& any. of an old child 3-4 years then
of Musci Flor Sulph aa 3 i. Creta alba
Sap viridis Ung sulph aa 3 i of us
extended. Here are the modes.

Flor sulph, of Raji aa 3 i. Creta alba
3 iv Sap viridis aa libram. Benzoin
for 10 persons. Then a young man
use the salve for 8 days & then take
a bath.

7 mil Ruri Flor Sulph aa 3℥. Creta
Sap virid. Ung. Emolien aa 3℥ and
Kal. Perm 3℥. Use a flann gown
after the ung apply any time. Use her
al Styra liq Flor Sulph aa 3℥. Creta
Sap virid. aa 3℥. Hard, use with
rub with swabs sub with H_2CO_3
or with Fleming's oint. about in an hour
with fine fine scales. Put in the bath
out in the colub when the most granules
are. Rub well

Pronari boy. chiefly in legs. Many flat
scales not much. Send in a bath. rub
with seife or seifeprint & rub with Tar
in 3-4 weeks will have disappeared
Pediculi Pubis. They spread very far even
to the eyelids. Use Gray Ung.

Dermis Syphilis affection about the face is
in the woman when the appearances are
not characteristic of any thing gone a whole
Purulent Ung of 10-20 grs + 3

Palmar Prunas

Often comes 20 years after the first apper
Diff to distinguish sometimes from other
& desily look at the surroundings & at the
mouth almost always find signs of syph
then. Use Emol. Hyd. or Linen. No need
of internal treatment

Acne Rosacea. I found it in three in form
was, as in result of secretion, too much or
too little, - a Periodic. if stronger or
seborrhoea. Inflamm of the gland in Acne
of both talg glands & hair follicles of both
when most of the form naturally they are
more inflamed & one versa.

a Pat may get it from a med. food or from
sun study, it is curable. Brown is peculiar
into a stronger deposit of sebum. the gland
enlarged even like nodules in sebum
& may attack very many of the seb. glands
Finally of Acne continued these glands
inflame & pustulate. other medicine
act from outside. Tar, petroleum

By a rose can be removed, but will return
The skin can be run the about, scarify or
rubby with some soap alkali & soap
with Lac. dent. sh. which is mixed in the
begin by this in 1 or 4 weeks. there is then
cure when more acne point than several
at build up. In then must scarify the
vesicles with then up. apply alum in the
& dilute the vesicles, also rub of the
with sulfur, 2 gr + 3 & an in emulsions
when much inflame, scarify with care follow
of vesicles & give emuls Hydrog of may prevent
me with very Dracyn. When new format
break away with seborrhoea & knife. In each
case when small is evident. much inflame
heal in large & an acute with some

scrape & get an acute inflammation
Relapses often occur. Doubtless return
then liquor. To come in 14 days (see 15 page book)

Pronaris hereditary often but rarely
comes out before the 4 years. It has
not been seen to come before this time
They are never born with it
This case a woman in the family
way had it as a child & now has
had it 3 weeks

Commencing Impetigo long standing
often comes in this way in weak individuals

Warts

26/2/74

The broad sitting warts on the face best
treated with carbolic acid, when if
pigmented 1 part 1 alcohol. per cent
with it. a plaster with a ferrule
which cut off the wart

Syphilide (polymorphous) . Main

numerous kind of spots on broad bell &
over surface of trunk, single & confluent
as it a macular skin or a syphilide. S
some weak persons get when cold, that hyper
disting for syphil. red in flesh & white in
center & will remain pigmented if prior
other species. H. lower short out no
schropper in center. (2) Numer. Keratoma
in forearm small & partly with

scales covered a papular syphilide
(3) besides these some layers - with
scales on them a Pseudo-syphilide ^{on} this
the infolts very marked beneath & red
bloody when scratched Other spots
& circled & shows a substay line
& shows a sharp border where
at other spots a Lichen filaria
add notes when butters touch
the legs of plaques mucous.

Hard, pale, eff as in back but
not over the surface but in the skin
& cover with scales. Forehead
pale red & scurfy.

The skin of a maculopap in cutis
gr. in upper parts. Next layers
blotches when uniform project
further off broader. & thin where
fimbriae have dried to scales. B. sept

then eximiated & a ulcer have
Pisic also ^{covered} with scurfy cover & a Phren
present. Has had the cha ^{non} begin of Novem
eff but appear 6 weeks ago. put in the
head & from there spread. Head changed
also & hair falls out sometimes

There flat ulcerative spots on back common
in congen syph. but ch. but when men
then from of maculopapular scurf & blisters
but the recent form does often

Sycosis of unexcited kind. great impu-
tation no recent inflammation about it
Take Sulph. $\frac{1}{2}$ gr. & dilute $\frac{1}{2}$ & use for
about 14 days. shave daily & apply
after the applicat. of the emplastr
Sandeschweifelschiff can also in these
cases of old eye be used. afterwards
use Sulph. Nat carb. Fly & Red
Pars. aa 3 gr. ointment 2-3 in the
fore part of the eye

Jodglycerine in nodes with great pain
and sometimes wonderfully quickly
even after a month's use I have been used
internal 20 gr. per die. for 7 weeks

Favus Treatment. Must remove the crust
with oil & maceration. Then the hair must
be removed. no benefit needed they concern
must then with $\frac{1}{2}$ gr. Sapon. alk. or alcohol
3 gr. Carb. and 3 $\frac{1}{2}$ & wash twice a day
or a Sublim 3 $\frac{1}{2}$ or less
Cautia Scabies good. chief thing is to keep the
head clean & pull out the hairs

Perkoma. Herid eruptions & about
the mouth a diffuse redness on thighs
legs patches of Cicuta eye which
do not disappear in process & in the
center a plaque. whole symptoms
speak for perkoma for Cicuta Iris.

Syphilis. Hebra holds that the down
into Primary & Secondary symptoms suffice
will sometimes get the first appearances
in the inner organs as for instance the
Liver producing a jaundice of which he has
seen several instances, or in the Kidney
producing an albuminuria. This only
because we see the maculopapular eruption
in the skin that we call them the first
symptoms of the disease. Severe Brain
affections or Mania may come on with a
papular syphilitic. Interesting case of a Russian
Colonel who went out of his mind & in four
months after St. John's recovered. Case of the
Hat manufacturer with Dropsy. Had his a
Syphilitic form years previously treated by St. John's
who did not know of this. Hebra mentioning a
pallidus under which in ~~six~~ week however will

Stand swellings. H. does not believe we have
any means which will reduce these not such
when is external not Col. liver oil. But often
seen after Measles or Small pox, occasionally
after Typhoid, is most plentifully after Scrophulous
and will remain for years

Empyema cutis. H. does not know whether there
is such a disease, or whether it is in nature contagious
whether the members of a family exposed
to the same conditions all get. No doubt
the disease exists but its contagiousness not proved

Not probably a Pity disease

Fame. when eruptive gets upon young must (17)
Leucopathia

Impetigo near all over the body
& pigmentation over the trunk from Pediculi
a second thing is the white spots Pigment
less & the surrounding rich in pigment
seen in the white spots black however. but of
all eruptions seen on neck face lower
part of belly & pubis. In animals also the
leg is also red. In normal condition
when all over equal get the diff. complexion

Syphilis starting from papule. arranged
in circle on the right ankle & back
of foot. Woman 53 years.

Eczema. unct. By 17 y. had some children
in back of legs also E. unct. on face
Leboulleau put on it & then Tar. treatment

Eczema skin & head. Many crists. Never
applied anything on it. Is it a Psoriasis
Distinguish (a) The position of the skin flake
& rest of body. (b) The matter of the hair on
the head in some places with a fluid
(c) The margin. not granular but level as
(d) after treatment see if. scabs or not
upper lip where with some knots
Cant. ac. 35. 301. of Leboulleau use for

8 days & after that 7 or 8 per

Acne Rosa

Schmelandische. Subst 4 per 12 part seife
suns. etc. Pul. Laps. always there. seife
an. 4 part & travel. good. re.
acne rose usually gets worse with this
treatment in the first few days but
soon better

Lichen urticatus 9 parts 10 per

different Effluor. Must

not pay over the skin pale red. & must
then other arranged by one another
others lived and like an erythema multiforme
It comes out of children in teething
in young people up to 20. should be
typical areas with Purp. erythema
etc. also Zoster. Near a peculiar course
in 1/2 day. Occi in face & last 3-4 m
Must be careful not to confuse with
a papulosis of tubercle, when
a slight pigment is left in a chronic
course. & not only in feet & hands but
in face. In ch. in 1/2 per in about 1/2 per
& little the patches are Prunys. must
distinguish. No itching in Lichen in other
much & even etc. Lichen in relapsu Prun
ys. many. 7 much. Some of which will
be then powder with starch
of some some simple 1/2 per

Scrophulous child. with L. tuberosum gran
Time 72 baths. or 72 Sul. Libm. dis in
12 doses. Then Carb Soda 1 lb. in 12 dr
before: part 72 in warm water & dis. & the
1 pound of the Soda in & mix & then put
into the bath. acts wonderfully well
& give... Also against Lupus. & good
at day 1/2 hour in 1 & give 3 a week
Internall 72 Carb. Sac. 3℥. as much
in pound of lime. in water also better
than good externally. Even against Lupus
& will grow even 25th in a few months
On the hands for a long time they will
even fall apart. quite stiff for a time
of ordinary use

Lichen urticatus. By 19 years. On hands
no erythema about them in other parts
this moment chronic. often in foot
back due to a little hair. - a
Purpuric papules. or Lichen toxicus
Lupus

On the people of scrophulous blood. Lupus will
begin often & long after the original abscess
is cured

Lupinus Drythemabodes

7/3/74

Can never say on this what method
will prove effectual & what will not.
A man 43 yrs. out on right cheek
& a little on right corner of nose
has had it over 2 years. Was also
on left cheek but this part was
cured by a salve. or even might
have disappeared spontaneously
a little clearing. some do very much
better. Scurvy, & Scurvy Hydrargyri

Syphilis of tongue

Tongue & chiefly. ulceration. Yaws
more ^{a Syph. not named} ⁴ in these cases
May have had 20 years ago
& get this also white. loss of Uvula
or palate & have no other appear-
ance of syph. ^{Excess of} ^{often} ^{by} ^{virtue} ^{of} ^a ^{poison}.
Lott. Many may get around children
another from a Syphilitic or Syphilitic
also of a syph. of 12-14 ¹ ^{clauding} ⁱⁿ ^{comes} ⁱⁿ
tongue from. Mutehen. painless
throat & seldom till eye of hazel with
as though anything of - a gummy may last
some years & these ulcers. Papilla
greater in size, broad &
when they stand & spread rapidly over
days but ^{Case} ^{of} ^{from} ^{of} ^{phalange}
Tongue may swell greatly when the
In most cases 9. Syph. not alone but

rev. of Epith. single. When ^{Dysph. ulcerates} ~~it~~ does
 so very quickly & has much pus. Has
 in Epith. in, uneven, in Syph ^{on sharp border}
 deep. Epith. band. Syth. no re-
 hard. & out of fourth comes diagnosis
 true K. I. in 3 months is healthy. If Can
 K. I. no influence K. I. is in there can
 a specific means. no effect before
 4-5 weeks. Also on Tongue bare then
 soon come. very after the time voice
 can be infected or not? Secretions vary
 in a certain. kind rubbed off & put in
 blood and ^{or} if a infect it into a follicle
 & infect. or thro an acne, or Molluscum
 the secr. is salines. infecting. When I find
 no chancre. still possible as cellular
 elements also in a case, are needed
 without any abs of mouth. Throat
 Middle. from Anura. a m. syph & K. such
will never be infected if a strange Anura
 infect such a K. such. it will be
 infected. either on the throat a chan-
 cre. thro it. infected, or Anura no other
 aff. but thro the milk only. a syth.
 ch will never inf. the mother but it will
 a healthy Anura. Thro milk is a

Specimens. Syph of Par. ^{from him} come over from father
 & more plentiful. Divalent & S mequa
 in spec. none positive. No sand.
 blood. sal. chem & milk all
 will infect.

what is this a recent solid. P. by the apt
very sturdy syph. what is the sup for
or Ter. a sort of broad candy, a hand
chance he get a hand ch. where table
Koreals syph. & infant. get into
chance. That the Ch. alim is respected
is untrue, All the recent from care
Koreans who after long time come out
in the ch. not inherit again. probably
by little in the child now apt to
be perfolious. Ter in parasite not
can be in the child. Impurity: Not
succeed, to infect with a 9 cases in
healthy birds (one a fresh case in favor)
Only exceptionally does. Can we several
times ^{have} clear on Syphilis? Once have it
all over so say Reed who says I
is an unhealable disease. Must say
that the essen^{that} body is not except. the
relaps as a rule but the longer
the ⁱⁿ ~~in~~ ^{undoubtedly} ~~the~~ interval as longer
Kudial healing in the exception but the
relaps become less plentiful. Can
we a second time be infected? have
believe, but now 40 cases where
syph. under hand & testiforms
& get on a fresh chance disease
Reed says when we are under ch. not
from a ch. involute to come

Can be grouped. In a hard case & get a
soften me. upon this under spot get
several others

Herpes tonsurans ^{that he heard by} ~~genuine~~ (faded in hearing)
young man. all over the trunk and
so much on legs and a little on face
& see numerous excoriations, as well
as papules some of which are broad
with scales in center. The general
color is H. tons. eq. or a papular
or tubercle. Distinguish this the scales
in center of some of the efflores.
Has also an eruption of spots in
mouth - in cheeks. W. believe that
he has H. 2-3 years ago, but that this
is H. tons. eq. A hard diagnosis
in period care would not treat this
yet till see what it would turn out
Am. Med. Cont. & cases
Poultice. (M. H.)

Woman with child. 7 in 7th month
numerous excoriations no distinct gangrene
any excoriations on legs & arms. Intolerable
itching. P. Poultice. depends on
the pregnancy. Child in scabs & other
also

Lupus erythematosus. Lips also in L of face
abscissions & white pustules, epiderm adher-
ing to them. Can be a universal disease
& H. first cases were such & some give
ground, going. In case of L. ery. with round
lips (H). Shown plates of it on the body
head. Cayman first described under
this name. H. described it formerly
as Sibonham conspitua. His first case
ran acutely & healed under simple
salves. Up to 1833 he believed it an
ordinary Sibonham & afterward other
cases which became more general
prevailed & died. Now we can say it
is a bovating affection & may run
even a fatal course, affect the whole
body. Some are terribly obstinate
in their course. In the face alone not
so diff. to diagnose, but may be with L. only
on the body & general, with on the face
but it is rarer at some times of the
course. Itches. L. not wet. no border
no crust, no itching no pus. An
inflamm. redness, swollen and ulceration
Pruritus also may be confirmed. as
occasionally there as in L. vulgaris as it has
no pus. Then the course is different from
Pruritus, when scratch is blood. When Lupus
ery. flat cicatrix are very flat & thin too
on the body as it can be found in small
groups. Nothing so terrible as Pruritus

but not blood when scratch & the scabs on
it not formed of Epiderm but dried Serum.
The people spread & circle building in
my market in simple cases

Have not known means against it
after a L has attained a certain grade
in the people & stand, all not means
gotten, ^{rather} cease in power some come
so sensitive that cannot wear hair
& simple long glycer. Now Helva uses
the soap & thinks it the best.

Deception getting, no good to use as some
do for 400 - twelve days. It uses 1
for 1000 days continuing

Impetigo contagiosa
Now with thick semi-dried pustules on
the cheeks & chin yellow coloured. They
are single & stand in the hairy parts
Here an single pustule dried - an Impetigo
with a lot of crust of yellow colour as I. impetigo
Impetigo contagiosa. On some hours
with some sort of pustules on face &
on neck attack many individuals occur
thus but cause not proved. Pills now
Kasbadit 14 days; Sulfuric 12 gr.

to 1 lb of water & 100 grains
A student allowed himself the impetigo
with the matter from the case

Lichen urticat. (see few pages back) 9 uld. 19th
may come on lips & mouth & little specific
papule. & a yellow scabulum on it
Now can see somewhat nearer. Look from like
a trace of Lichen & Urt. Iris. Now much
more Erythema Iris & it is not pale as before
as well when Lichen urticat. var. comes
comes from acute. inf. erupt. & I was
also when course & exposure then itching
& with ch. calant. stomach & may
go over the whole skin. Blue red streaks
& mixed with lymphadenitis & even
may run on to a Pyemia. We have a
case where 2 in year had this general
U. Iris over the body.

Lezema of under head nearly always
brought on by lice both in children
& women. Hair matted together
Put. see subill. or Petroleum for
2 days & then a bath

Lezema rubrum head. child. 4 year
old. enormous head. Bald in large
portion in crown. rest of hair matted
with crust & scales covered also
extended over the chest & a little on forehead
Over the body a L. papulosum as usual
in scrofulous individual. Carb. acid 3i. Ol.
Sic. acill. 3vi. 2 a day on head. & on body
use the oil also

Mucosa ment. Septilis. Remains now
Pharynx Larynx scintils. Do not know
the internal. appo. of M. M. but in labi
sluga part. come
Mouth on lip. upwards. plaques. some
plentiful a numb. an. inc. growth cells
on mouth angles. x. wh. arise & invade
quite spontaneous. often with great rapidity
not in every case other dirty & an. ulceriform
others indurate or sclerosed & a white
spot. leave wh. remains. for years &
on relapse. all infectious. Some think
that these white patches left not the result
of syph. but true & is. One of the last app
of syph. may be there after years of suff. by
other syph. affections. J. B. Blicher wh. has
& a white patch spot. decays. heals an
& soon to even 20. not cause. when would
call app. in practice. Can you long to
the single app. of an. old syph. in thin
Complains of irritation when talks at any speech
found. & may see a white speckly in chest or
tongue of wh. the pale. Perhaps Huxley nothing
at hand made ⁽³⁾ on his tongue internal red spot.
since what deeper than surrounding &
when exanant. see the papill. but from
them on the epith. of the. sharp. circumference
or other periph. with a small border
excavated with pins. a little when
all this may be called Pseudo-mucosa vis

& they come after with the P. of head of foot
& they are an accumulation of epithel. as the P. of
How do they arise? Once removed a thin layer
is no trouble. for years many not know
other increase in circumference & not only in
M. but in lips. & outer hand &
fingers in circumference of mouth as also nose,
towards inward. These white hard
granularly affect whole lips or border
of tongue & remain unchanged for
years unaltered. & are hard as
a cartilage. They are rare & accounts of P. of
p. of nose. They are generally held for
Epithel. & from them Epithel. may probably
come as Epithel. may come from Lupus
as H. has had such cases when for years
has treated patients for it. A boy of
20. & more years with a slow course in
suddenly, to a Epithel. gone over, a week
after to an Epithel. so much rapidly & an very
destructive. go to ground quickly.

From 1840 to 1865. H. observed a case of Lupus
in this time & suddenly a Epithel. broke out suddenly
after coming into Hospital about 1841

From a common coin to a Epithel. has Lebert
of Bonn has traced all intermediate steps.
& says they form the extreme boundary in the
epithelial growth. Must be careful as
may take these growths when small from
Epithelium when they are in state of Sept.
H. has a case like this when I was forewarned
& she was & he cured her in 3 weeks with H.S.

For all these kinds agnos, & H? internally
agnos, & agnos as parles iguales nothing
else for there tongue affection

Here come also on believe some Heilhoff
~~agnos~~. In Mr. of Mr. Noe & Rhen. may be not
in the late one afft. but also the very
point. He has been sent on the very first
symptom of a Germ. syphilis. I am well
aff. of Mr. Noe. come in with a scurvy
swelling a thin skin fluid secretion. I must
believe that it is Syphilis. From him he is felt
on an uncut cure. Many come in small
children. H. there a case, when a man ^{a friend}
man 40 ch. all health. got sy. as a window
man and 4 other who all sy. ^{and he only affected} & wife wife
a year after marriage. & has Noe also. Got
later a brain afft. 2 years on a Sofa &
then died. Historia has cured him perfect,
^{as he thought} when a window & had his syphilis

The 4th cured him to but after off as an Brit
After then came coming in after more as ship
in spite of all treatment go on to distant
Diff. place to get at. as it is possible to all
to cure Plag. man in gold farms with
best Giltman as to cure there without
the local treatment which is in many cases
quite impossible. When you can eat with
Agnos, & give the H. I.

Woman. Head, very herabellous.

In an acne cachect. or a Purpura Syphilitica
in such pale words, come some. This
number of. brown papules also a form of
a. syph. offers the same f. in a. cach.
when removed the crusts not when here
(an ulcer + infiltration)

Franboisea form Syphilitica. Back of
the head, covered with crust which
on removal shows an ulcer with purple
granulation (condylomatous). Somewhat
serpyginous. in the sternum.

Abuse case

Lupus hypertrophicus and. Numerous
small little projections in arm + hand
in the periph. gyrally in center a little
eccentric. Little an ulcer + du. want when
the borders have fallen the spots project
above the surface of the skin + an infiltrated
an on both hand + neck chiefly on back!
also on elbows + on feet back + sole but
not so much. These also especially the right
looks like Ichthyosis. but I am not sure, while the
occ. however like there are single spots
+ along the course of nerves. Often along the
radial ulnar. There however an arrow
in gyras + where the borders have fallen
is the infiltration. Such appear along a
certain nerve would be undoubtful even
Ichthyosis. A Syphilitic. Some would say
heras a Sy. congenita. Here no ulcer
on removal of crust. If I = Lupus
it is from early childhood in 2-3 years

in hand - part of ducts & plaques from
 small growths on surface with a
 border covered & then develops and
 may for 2-3 years so grow & not
 change the form of the appearance
 The 9 yrs occurred in Lupus, but the
 effusion is characteristic & as he has
 had it only a few years & it is doubtless
 may be a Syphilis congenita
 No effusion in the mouth
 must treat as a local disease & whether Syph
 & Lupus - just the same. Must remove
 the broken & sharp granules at will not
 do. Soap and on flannel & use the sev.
 days. when removed such spots eat
 with caustic. Also Cor. carb., Aluminium
 Sp. rem. carb., A. e. l. rem. ^{Caustic} a. a. partes, and
 = Aluminium solution

Syphilis upper lip much infiltration sharply
 bounded, must remove the membrane
 may lay unexcise in day 2-3 days, to excise
 an inflammation in it. or remove by ^{Caustic} ^{strongly} of. rot. for
 equal. If then do not remove the infit. use
 the caustic. Carb. borax or Carb. and. but
 takes a long time, even 6 months. In any case
 the appl. of caustics must be applied with
 linen & bound lightly at night

Lupus vulgaris treatment internal
 same go with it takes long, again in
 childhood as 6-10-12 years & if wof. will
 do with internal treatment. It. for a cell
 will & externally. 3) L. e. l. daily

not more. Outwardly, apply on flannel to the
 spots. Swollen if with carb acid. 3i + 3vi
 Pine & also, another is 12i. not in ch.
 but in Envo ch. & is good. The action is long
 appear on two with it, with D-10g. abay
 Syph. mellea. an no good. 17. Dec. 31. 41 set
 Local treatment. an arrange after age search
 extent & localization. method. wh. the
 above. an soap 17. 7as. good glycerine a ch
 with lupus of 7 holes. use soap 17. & may
 sealone with this. but action is long 2 years.
 good gly. more unless but slow also. This only
 in lupus & phial. not use in the. & ulcers
 & ulcerative form. 7 as also in single cases
 found. in young persons who are very recurrent
 when not in face. Carbolic good. Carbolic acid
 15 4 not day soap 17. or O. Jac. acelli. Min amp
 die carbolic. Kali Carb. when large area
 more. take a stick & eat. Beats deep, & good
 a good cicent. see Lupus in substance
 Lupus being in ulcer form of Lupus a sign
 of 7 holes. ^{when pale} Kali Carb. color very pale
 supply for a quarter of an hour. If when people
 goes under in such. the com. area at 3i
 can. correct for 3 days with it
 or Volkmann's method. in scraping & not
 with a knife & is eff. Galvanic carb. good
 in L. hyperdiphtheria

Carbolic acid in strength of 1:60, 80, 100
has any effect on the lower organisms (Bills)
Pity cells in 1:1000 will not grow but are not
destroyed, but take them out & place in
favourable conditions and they grow again
Internally carbolic acid not in the same agent
Lupus vulgaris

Woman 40 years old, has had it on face
from infancy all over the nose & cheeks, skin
bluish red, projects a little especially on
left cheek, on the bluish place, vesicles in dense
follicles, as pustiform, show, cicatrix also
numerous, & enough, cheeks infiltrated much
also in musculo-fascial, as can be felt through mouth
Dermatitis ^{les} acute vesicular, L. vulgaris, & erythematous
for a. ros. the redness not the redness of
the vesicles & more & vesicles, & the cicatrix
light, also the infiltrate also may come in it
against it. Robertson's examine, found in
periphery numerous brown and whitish spots
& (12) ^{small} a. ros. also find a few acne papules
or if all gone get it again, & pass on process
also if in a. ros. the infiltrate would only be an accident
complic of it as in inflammation process of acne
the atrophy, a dimple or several depressions
are also a feature. Skin not raised.
Lupus, erythema also a butterfly, appearing also in
^{les} be evident infiltrations in these diseases, but
long found in it the spring of follicles, red spots
indures & granules on these follicles, or if not
present with Saps or they appear
might it be Syphilis? occasional large nodules,
especially on the nose may be true its sign
but on the people the signs of papules end

and as a rule must study the periphery in all
these cases
Infil also more diff than in syphilis. Per yelies
to *L. vulgaris*; It is diff as it is a rare form
It comes here from the deeper stratum of the skin
& may sometimes even be without affec
the skin. It, also grows in these cases, about the
vessels & produce a dense swelling as
L. tumida (not so in this case) Common in
pulled down, debilitated people. In these
cases (as in this) often accompanied by Lupus
in the mouth & palate

Treatment. Its very deep salomore diffuse
infiltration. So is not with ~~at~~ gutta serena. Can
not be dragged. In these more difficult. Good
morph. matter & soften it. Good glycerine
& come with gutta serena. cut the same
wells also ^{after} this at gutta serena with arsenic
paste put on one cheek & then in small saff
removed with paper lining

Lupus vulgaris upper lip. right side & right
ala nose covered with broken and an inch
half firm right angle of mouth another patch
about eye for nine years also covered
with crusts. Boy age 15. Has had it 2 years
table 3 months & was working & a cure

Remission quiescence. where a patient
who had been treated in the H. house for
the mischief. came again in 5 months with
a second attack of the same & during
this time was vaccinated & looked well

When pustules mixed with blood, accompanied
the case runs a favourable course
if the hair points form on the body, as pockmarks
come out, or as Beule come out, is the pock-
mark hair, or the surrounding.

Blood & secretion from a Pusula round
may at circumstances well curable in less
than 2 days

Eczema papule. with intolerable itching
only a little. but the itching runs in proportion to the eruption
Carbol. a 3 \mathring{r} sp. ven. rect. 3 \mathring{r} . gly 3 \mathring{r} . Sp. Lav.
andula 3 \mathring{r} . wash with a sponge & use the
Ammonia 3 \mathring{r} over zinc 3 \mathring{r} . The zinc is indicated
only when the itching is somewhat violent.

No better method against eczema itching than
strong scratching. Ol. caducei 3 \mathring{r} . alcohol
albi sulph. aa 3 \mathring{r} . Ol. Lavandulae ^{ol} ^{exte} ^{Horis}
Marine aa gutt. * * 2-3 times a day rub in

Prurigo small by 10. has had some 10 days old
Ol. acet 3 \mathring{r} . 3 \mathring{r} . rub in & able. Euter
& 3 \mathring{r} times in bath. These cases where it
has lasted from infancy gentle means will
soon come again after removal.

P. much more common here than in
other lands. none or scanty any in France or England

Eczema. head neck & face

Zinc ox. Carb. Plu. aa 3. ~~Wash~~ 3. Ol. Ol.
Su. rub. Desach. salve. also. Box a good
if Dr. with some Box a 3i rub with strength
gly is if want more amount. & a little

ceba oval. ac 3i. st. oliv. 9i. 1. of put green
at home. the mag Glycemia. Ampu 3i
Sly 3vi. coc. and criss. mag

Legum back of head. nearly always from
lice, as in this case

Put remu sat. 3+ mag unsp. 3+ or
rebrilem. moving & every apply for
two days & then wash. To take away
the nits. wash with alcohol & benzoin
in Prun at the last Small procedure

400,000. 600,000 dead. only 2% dead
of vac. of vac. only 1/2% of unvac
15% then 10% dead of vac of
not vac 40-50%

first stage of P₂ when the fever is
and pulse up some Digitalis but
2nd stage when the patient is comatose
it will do not give it.

may even with the above but probably
the effect due to the above.

coldt application, are very common
in the first. & some times at various
Citron acid.

nerve is much plentiful in the 2nd
stage all these branches are
in the nerve itself, nerves
at the root
or even again on

In the first stage of P_{er} when the fever is
high and pulse up give Digitalis but
in the 2nd stage when the gradual recovery
& heat usually do not give it.

Alch. may even with obn. but probably
all its effect due to the obn.

Local cold applications are very com-
mon in the first. & some even at some
times. Chron acid.

Nerv. of trigem. is most plentiful in the 2nd
part in this case all these branches are
affected. May be in the nerv. half. nerves
or it may be central ^{at the root} or even again a
peripheral cause.

Anterior corner often in pale circumstances
during the course central disease. In
nucleus of trigemini. often several appear-
ances. From form an often like long, or short
verruca. shapes. Treatment.

of Ch. an am. give Dr. Waller's. Op_{er} ph_{os} &
never forget this. It's that. G_o. G_o. G_o. G_o.
Some antimalaric means. Quinine & narcotics.
Symptomatic treatment. Cold & warm compresses
are some the other. warm baths. compresses. There
is some heat cold is exceptionally. Medicated
compresses. mentha. camphor. are issue &

Narcotic. good. morphine. subcutaneous injec.
Med. venous. as here. get. Kali. even if not
by phleboclysis. Then the constant stream of
chlorine. Cramp of cardiac. or. even begins
I stop the pain

Artificial. protracted labor
for $3\frac{1}{2}$ - 4 H. - bebenfalls
at 28 weeks.

- (1) when the pelvis is so narrow that
a full grown Ch. can not pass
May Ch. be lost - mother not injured
Diff. by a post-rem. with a Maltp.
(2) Cervix at end of. Suberung
shaft: Maltp. plaus come with
the cervical ablation proceeds &
punct the neck successfull all
goes well.
(3) Placental praevia & bleeding at
"latter weeks of pregnancy
(4) Diseases of end of preg. as Pneumonia
min. Often spontaneous of this
labor latter place
(5) Death of the foetus in the latter
months of this latter place
at a certain time in various
ways then it is an medical

for work. one or more weeks before
the usual time
all brought before the ch. can live
called hem abortions.

(1) open the membrane high up as
possible (ring all over)
then use a feather applied in
a wound.

(when Bright's disease exists. This
always here perform at life - labour)

(5) Catheterization of the uterus
not better for the ch. & much
more for the mother - a meta
comes in sehr Graüförs.

(4) A Tampoon in uterus. Not good.

(5) Injection of cold water. Bad
for the woman sehr oft für Grunde
sahen.

(6) intra uterine injection of water
between ut. & Blase.

(7) Tampoon of vapour. with Charpie
They were at hem only with placenta.

force & occa when the cervix
is very narrow

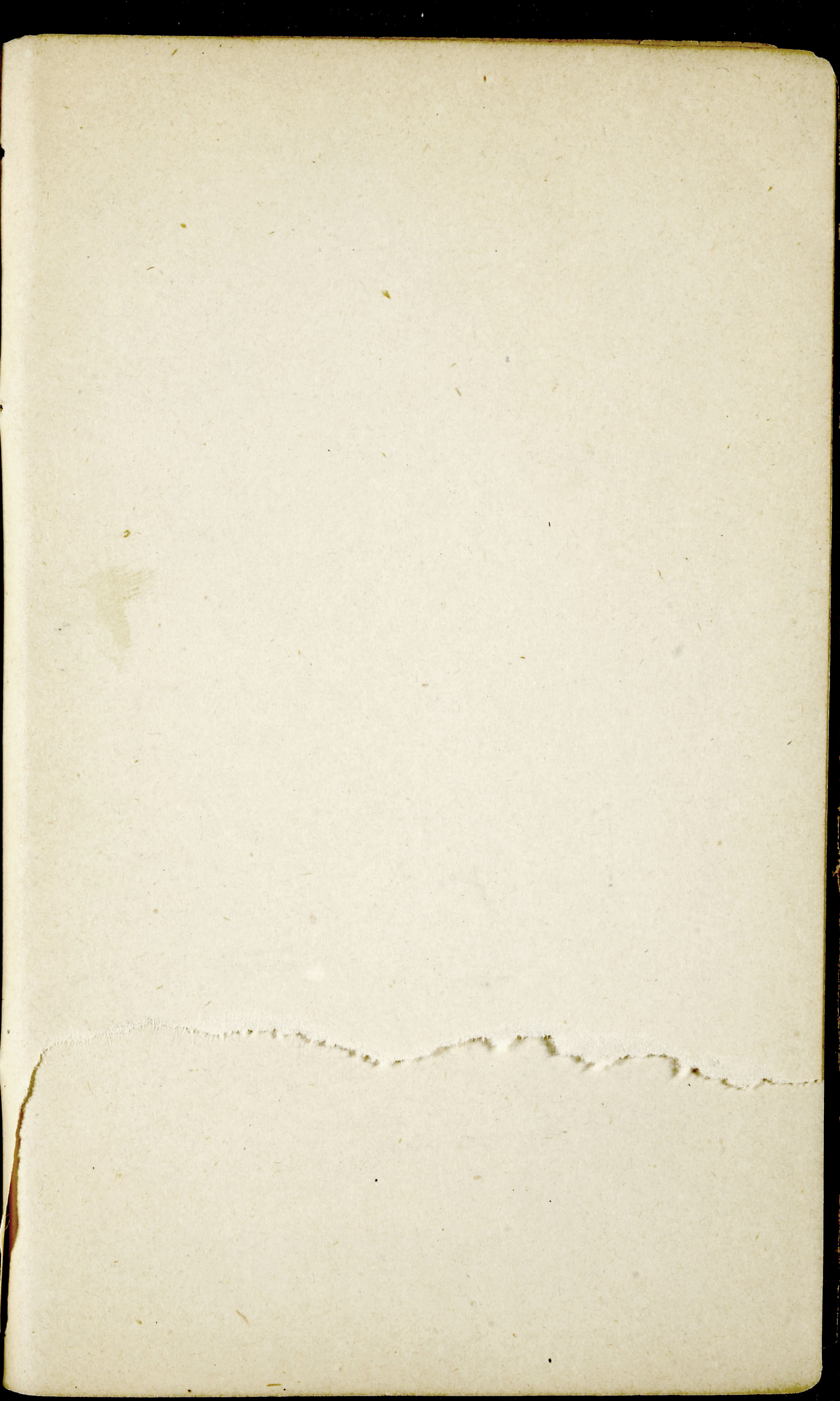
(8) widening the cervix with an
instrument. Laminaria &
never used here now

(9) Scanzu. Drawing the breast
with. (Simple warm application
& manip. an suff. to force
the flow of milk in old case)

Abortion when pelvis so narrow
that even a Lebenfais Ch. can not
be brought thro. also when tumors
are present &c

Constriction also demanded it
Pregnancy with uteroflexion. Bladder
in these cases much distended
~~for other reason~~ Empty the bladder
& from the rectum lift the ut. up
adhesion of the uterus usually
in these cases - ut. are run - the ut.
about themselves

Unarmed something of that
a month & women in danger
Method. Of the sword & feather.



9-10 Hibernia

10.30 - 12.30. Minutes

Childs, Deane, Schunkegallen

Columbus 1/28

He had 1/28

2 a day at boat

Columbus 1 a day

A venture in sun to come up

...

Went out after
Barron

Plenty

Went to

10

10.30

15

10

457.60

