

**TECHNICAL DEVELOPMENTS  
AND CHALLENGES IN  
GLAM-WIKI INITIATIVES:  
MUSEU DO IPIRANGA**





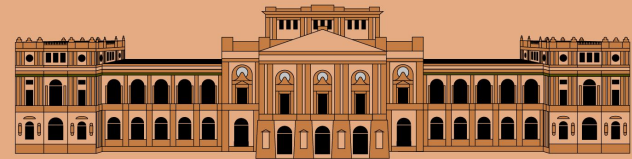
Éder Porto | User:Ederporto | User:EPorto (WMB)

eder.porto@wmnobrasil.org

Products & Resources Manager | Wiki Movimento Brasil

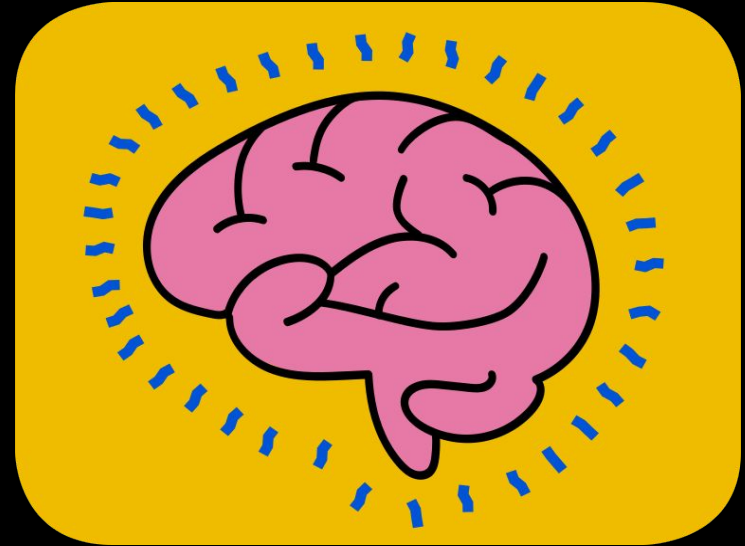
# WIKIPEDIA INITIATIVE NOVO MUSEU DO IPIRANGA

- The partnership between Wiki Movimento Brasil and Museu do Ipiranga started in 2017.
- Around 33K media files were uploaded to Wikimedia Commons, and around 33K items were created in Wikidata.
- In 2020, a new project called *Wikipedia Initiative Novo Museu do Ipiranga* was created in this partnership context.

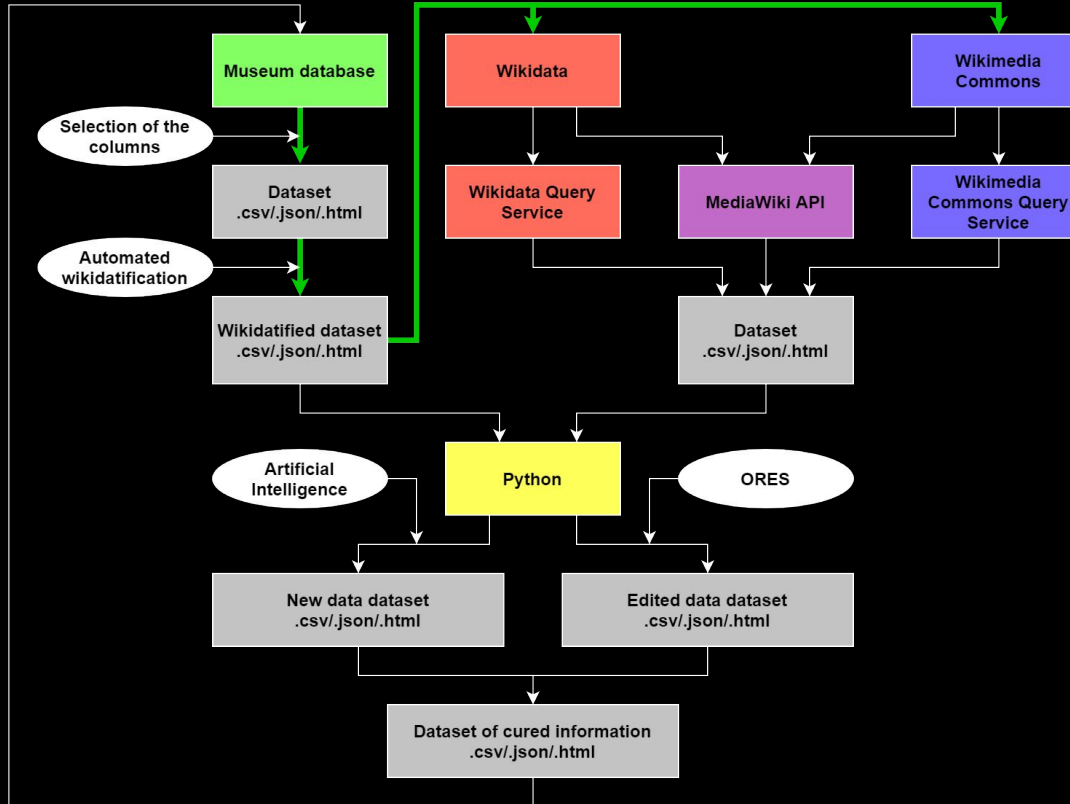


# WIKIPEDIA INITIATIVE NOVO MUSEU DO IPIRANGA

- **Goals:** Build an open and collaborative knowledge culture and develop tools and processes to improve the insertion of the museum in the open internet ecology, specially the Wikimedia environment.
- Established a sustainable digital community to act in production, circulation, outreach and educational appropriation of content related to the institutions, collections and research of the Museu do Ipiranga.
- Innovation and development of products and technological processes, broadly related to digital humanities and informational curation in the semantic web. **[[[:pt:WP:PNMI]]**



# DATA ROUNDTRIPPING

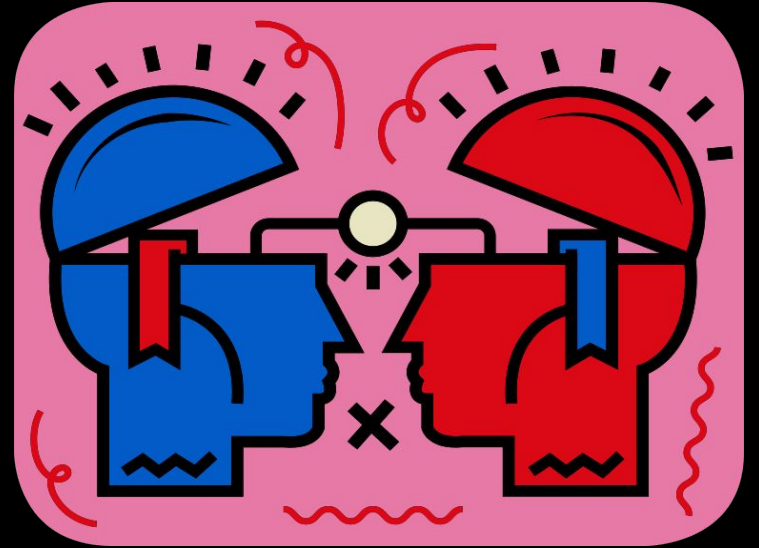






# METADATA APPLICATIONS

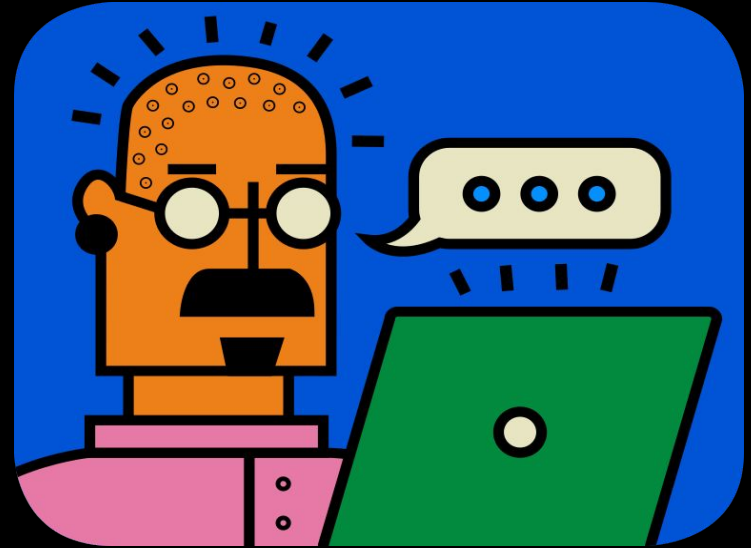
- **GOAL:** Enable improvement of informations about the museum's collection with a user-friendly interface.
- **EXPECTED RESULTS:** Utilize the collaborative data curation process to answer questions of the research groups of the Ipiranga Museum; Improvement of the data and metadata of the objects.
- **KNOWLEDGE SHARING:** Wikidata Lab XXVIII with Lucas Werkmeister: [\[\[Q106603519\]\]](#).





# METADATA APPLICATIONS

- **CHALLENGES:** Define the questions that need to be answered (research); Implement the interface and ensure privacy for sensitive information (technical); improve the engagement of the public (outreach).



# METADATA APPLICATIONS

**WIKI MUSEU DO  
IPIRANGA**

How many?

<https://wikiquantos.toolforge.org/>

**WIKI MUSEU DO  
IPIRANGA**

What clothes  
should I wear?

<https://wikiroupas.toolforge.org/>

**WIKI MUSEU DO  
IPIRANGA**

Which brand?

<https://wikimarcas.toolforge.org/>

**WIKI MUSEU DO  
IPIRANGA**

What is the  
ornament?

<https://wikimotivos.toolforge.org/>

**WIKI MUSEU DO  
IPIRANGA**

What is it for?

<https://wikiusos.toolforge.org/>

**WIKI MUSEU DO  
IPIRANGA**

What is in the  
coat of arms?

<https://wikibrasoes.toolforge.org/>

