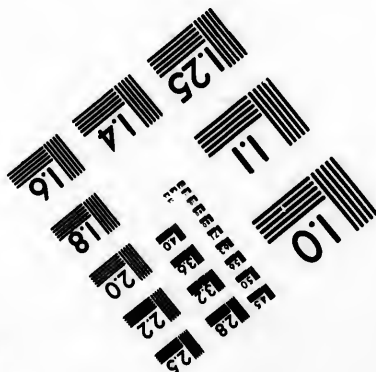
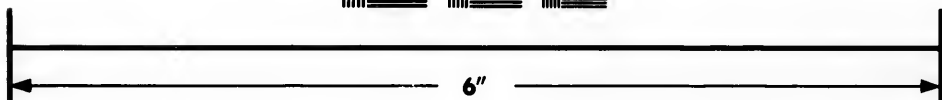
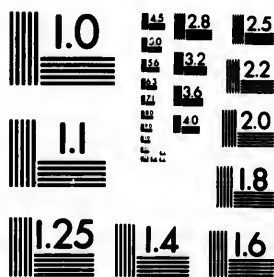


**IMAGE EVALUATION
TEST TARGET (MT-3)**



**Photographic
Sciences
Corporation**

23 WEST MAIN STREET
WEBSTER, N.Y. 14580
(716) 872-4503

**CIHM/ICMH
Microfiche
Series.**

**CIHM/ICMH
Collection de
microfiches.**



Canadian Institute for Historical Microreproductions / Institut canadien de microreproductions historiques

© 1983

Technical and Bibliographic Notes/Notes techniques et bibliographiques

The Institute has attempted to obtain the best original copy available for filming. Features of this copy which may be bibliographically unique, which may alter any of the images in the reproduction, or which may significantly change the usual method of filming, are checked below.

L'Institut a microfilmé le meilleur exemplaire qu'il lui a été possible de se procurer. Les détails de cet exemplaire qui sont peut-être uniques du point de vue bibliographique, qui peuvent modifier une image reproduite, ou qui peuvent exiger une modification dans la méthode normale de filmage sont indiqués ci-dessous.

- Coloured covers/
Couverture de couleur
- Covers damaged/
Couverture endommagée
- Covers restored and/or laminated/
Couverture restaurée et/ou pelliculée
- Cover title missing/
Le titre de couverture manque
- Coloured maps/
Cartes géographiques en couleur
- Coloured ink (i.e. other than blue or black)/
Encre de couleur (i.e. autre que bleue ou noire)
- Coloured plates and/or illustrations/
Planches et/ou illustrations en couleur
- Bound with other material/
Relié avec d'autres documents
- Tight binding may cause shadows or distortion along interior margin/
La reliure serrée peut causer de l'ombre ou de la distortion le long de la marge intérieure
- Blank leaves added during restoration may appear within the text. Whenever possible, these have been omitted from filming/
Il se peut que certaines pages blanches ajoutées lors d'une restauration apparaissent dans le texte, mais, lorsque cela était possible, ces pages n'ont pas été filmées.
- Additional comments:/
Commentaires supplémentaires:

- Coloured pages/
Pages de couleur
- Pages damaged/
Pages endommagées
- Pages restored and/or laminated/
Pages restaurées et/ou pelliculées
- Pages discoloured, stained or foxed/
Pages décolorées, tachetées ou piquées
- Pages detached/
Pages détachées
- Showthrough/
Transparence
- Quality of print varies/
Qualité inégale de l'impression
- Includes supplementary material/
Comprend du matériel supplémentaire
- Only edition available/
Seule édition disponible
- Pages wholly or partially obscured by errata slips, tissues, etc., have been refilmed to ensure the best possible image/
Les pages totalement ou partiellement obscurcies par un feuillet d'errata, une pelure, etc., ont été filmées à nouveau de façon à obtenir la meilleure image possible.

This item is filmed at the reduction ratio checked below/
Ce document est filmé au taux de réduction indiqué ci-dessous.

10X	12X	14X	16X	18X	20X	22X	24X	26X	28X	30X	32X
					✓						

The to t
The pos
of t
film
Orig
beg
the
sion
othe
first
sion
or il
The
shak
TINU
whic
Map
diffe
entir
begi
right
requ
meth

The copy filmed here has been reproduced thanks to the generosity of:

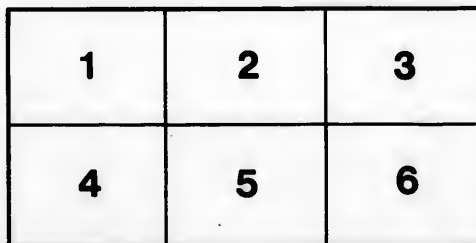
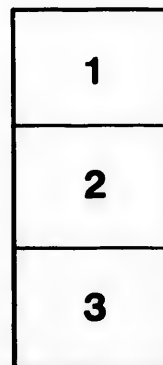
Library of the Public
Archives of Canada

The images appearing here are the best quality possible considering the condition and legibility of the original copy and in keeping with the filming contract specifications.

Original copies in printed paper covers are filmed beginning with the front cover and ending on the last page with a printed or illustrated impression, or the back cover where appropriate. All other original copies are filmed beginning on the first page with a printed or illustrated impression, and ending on the last page with a printed or illustrated impression.

The last recorded frame on each microfiche shall contain the symbol \rightarrow (meaning "CONTINUED"), or the symbol ∇ (meaning "END"), whichever applies.

Maps, plates, charts, etc., may be filmed at different reduction ratios. Those too large to be entirely included in one exposure are filmed beginning in the upper left hand corner, left to right and top to bottom, as many frames as required. The following diagrams illustrate the method:



L'exemplaire filmé fut reproduit grâce à la générosité de:

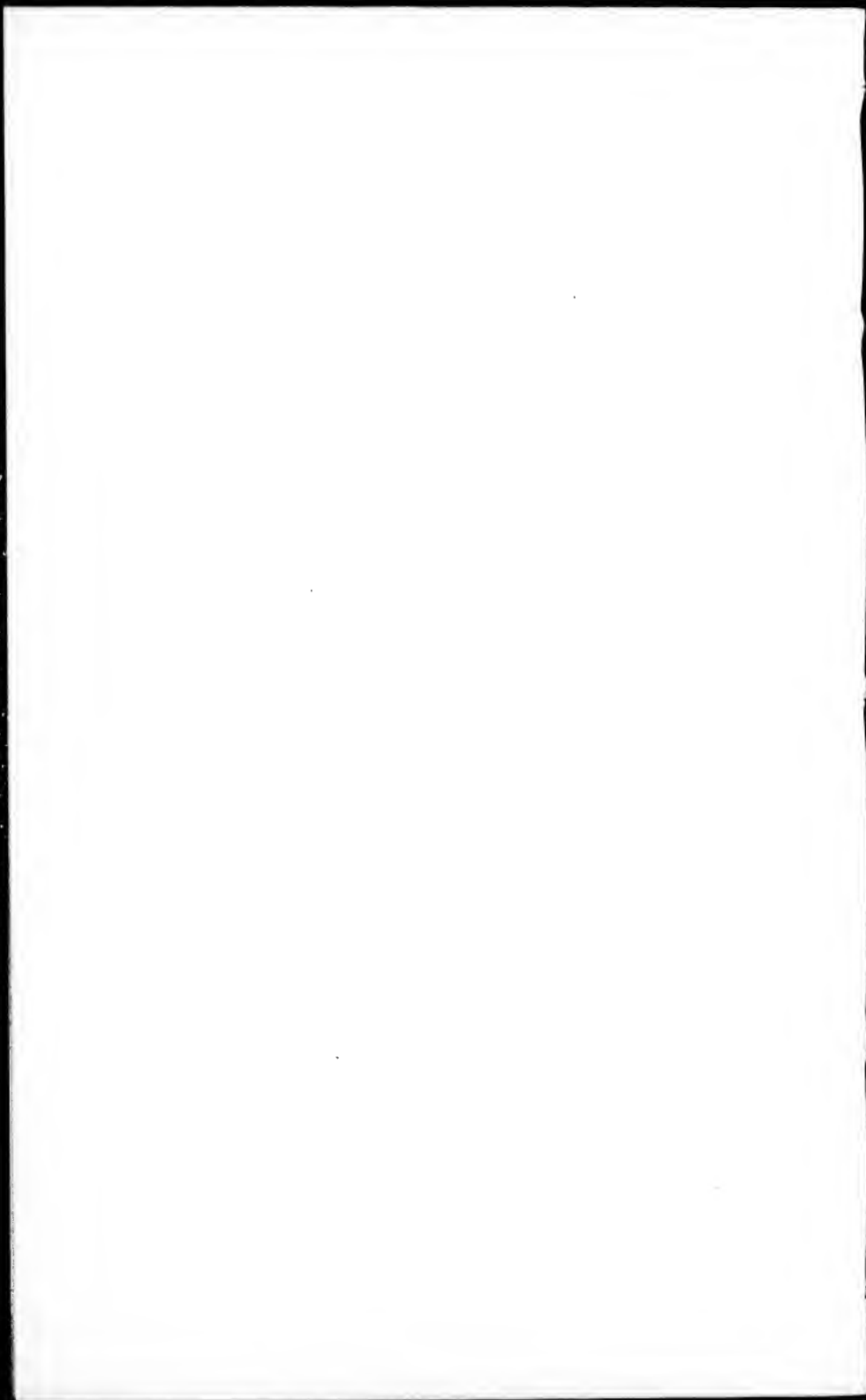
La bibliothèque des Archives
publiques du Canada

Les images suivantes ont été reproduites avec le plus grand soin, compte tenu de la condition et de la netteté de l'exemplaire filmé, et en conformité avec les conditions du contrat de filmage.

Les exemplaires originaux dont la couverture en papier est imprimée sont filmés en commençant par le premier plat et en terminant soit par la dernière page qui comporte une empreinte d'impression ou d'illustration, soit par le second plat, selon le cas. Tous les autres exemplaires originaux sont filmés en commençant par la première page qui comporte une empreinte d'impression ou d'illustration et en terminant par la dernière page qui comporte une telle empreinte.

Un des symboles suivants apparaîtra sur la dernière image de chaque microfiche, selon le cas: le symbole \rightarrow signifie "A SUIVRE", le symbole ∇ signifie "FIN".

Les cartes, planches, tableaux, etc., peuvent être filmés à des taux de réduction différents. Lorsque le document est trop grand pour être reproduit en un seul cliché, il est filmé à partir de l'angle supérieur gauche, de gauche à droite, et de haut en bas, en prenant le nombre d'images nécessaire. Les diagrammes suivants illustrent la méthode.



P

A

THE
NEWFOUNDLAND
ALMANACK,
FOR THE YEAR OF OUR LORD
1864,

[BEING DISSEXTILE, OR LEAP YEAR, AND THE LATTER PART OF
THE TWENTY-SEVENTH AND THE BEGINNING OF THE
TWENTY-EIGHTH YEAR OF THE REIGN OF
HER MAJESTY QUEEN VICTORIA]

CONTAINING
ASTRONOMICAL, STATISTICAL, COMMERCIAL, LOCAL
AND
GENERAL INFORMATION,
DERIVED FROM THE MOST AUTHENTIC SOURCES.

COMPILED, PRINTED AND PUBLISHED BY

JOSEPH WOODS.

ST. JOHN'S, NEWFOUNDLAND:

MDCCLXIII.

RARE
AY
420
N49N4
1864

THE NEWFOUNDLAND ALMANACK.

Eclipses, 1864.

The smallest number of ECLIPSES that can possibly happen in a year, occurs in 1864. There will, therefore, be but *two* Eclipses the present year; both these are of the SUN, and neither of them visible in this Island.

The *first* happens May 5, and will be visible in the North Pacific Ocean, California, Siberia and Australia. It begins on the Earth generally (Lon. 126° 56' E., Lat. 1° 23' S.) 9h. 30m, p.m., Greenwich, (m.t.), and ends 3h. 3m. on the morning of the 6th (G. m.c.t.) Long. 130° 25' W., Lat. 20° 9' N.

The *second* happens October 30, and will be visible in the South Pacific and South Atlantic Oceans, at Cape Horn and Cape of Good Hope, South and Central America and the West Coast of Africa.— It begins on the Earth generally, October 30, 0h. 31m. (Greenwich m.t.) Long. 100° 14' W., Lat. 6° 25' N., and ends on the Earth generally, October 30, 6h. 29m. Long. 6° 26' W., Lat. 19° 25' S.

Calendar.

Golden Number 3	Dominical Letters C.B
Epact 22	Roman Indiction 7
Solar Cycle 25	Julian Period 6577

Fixed and Moveable Feasts, Anniversaries, &c.

Epiphany	January 6	Pentecost—Whit Sunday	May 15
Septuagesima	do 24	Trinity Sunday	do 22
Shrove Sunday	February 7	Birth Queen Victoria	do 24
Ash Wednesday	do 10	Corpus Christi	do 26
First Sunday in Lent	do 14	Accession Queen Victoria	June 20
St. David	March 1	Proclamation	do 21
St. Patrick	do 17	St. John Baptist—Midsummer	24
Palm Sunday	do 20	Birth of Prince Consort	August 26
Annunciation—Lady Day	do 25	Michaelmas Day	September 29
Good Friday	do 25	Birth Prince of Wales	Novem. 9
Easter Sunday	do 27	First Sunday in Advent	do 27
Low Sunday	April 3	St. Andrew	do 30
St. George	do 23	St. Thomas	December 21
Rogation Sunday	May 1	Christmas	do 25
Ascension Day	do 5		

The Year 5625 of the Jewish Era commences on October 1, 1864.
 Ramadân (Month of Abstinence observed by the 'Turks) commences on February 9, 1864.

The Year 1281 of the Mohammedan Era commences on June 6, 1864

St. John's.

True Latitude of Church Hill	47° 34'	30 North.
Longitude (West of Greenwich)	52 44	0 West.

Latitude and Longitude of places on the Coast of Newfoundland.

	Lat. N.	Long. W.
Cape Ray	47 37 3	59 17 2
Cape St. George	48 28 54	59 14 26
Cow Head	49 55 12	57 51 16
Point Richie	50 41 30	57 24 0
Point Ferolle	51 1 9	57 5 47
Cape Norman	51 37 0	55 48 0
Quirpon Island—Cape Bauld	51 38 0	55 30 0
Groais Island—North Point	50 59 0	55 27 0
Canada Head	50 41 0	56 2 0
Cape St. John—North Bill	49 59 30	55 25 0
Toulinguet Harbor—Harbor Rock	49 39 28	54 41 20
Cape Fogo	49 40 0	53 54 0
Offer Wadham	49 37 30	53 40 0
Funk Island	49 44 21	53 7 20
Cape Freels—South Bill	49 18 40	53 24 0
Greenspond Island	49 7 30	53 31 0
Offer Gooseberry Island	48 58 30	53 27 0
Cape Bonavista—Gull Island	48 42 40	52 59 20
Catalina Harbor—North Head	48 32 28	52 56 6
Horsechops	48 21 30	53 8 30
Trinity Harbor, entrance	48 21 30	53 16 50
Bonaventure Head	48 16 30	53 18 10
Bacalieu Island—North Point	48 9 0	52 44 46
Cape St. Francis	47 48 4	52 43 41
Cape Spear	47 30 53	52 33 30
Cape Broyle—North Point	47 3 52	52 47 27
Cape Bollard	46 46 46	52 53 20
Cape Race	46 39 44	52 59 10
Virgin Rocks	46 26 53	50 56 35
Cape Pine	46 37 14	53 30 0
Cape St. Mary	46 49 25	54 8 45
Placentia Harbor	47 15 11	53 55 3
Mortier Rocks mid.	47 2 0	54 52 0
Cape Chapeaurouge	46 54 19	55 20 30
Point May	46 54 0	55 59 0
St. Peter's Island Light House	46 46 52	56 8 44
Cape Miquelon	47 8 11	56 19 30

NOTE.—The Tide Tables (in the Calendar pages) may be rendered applicable to various other places on the coast, by simply adding or subtracting as the case may be, the difference between the times of High Water or the Full and Change of the Moon at St. John's, and the time of the full tide at any other harbor; for example, to find the time of High Water at any of the principal harbors of Conception Bay, add 45 minutes to the time at which it will be High Water at St. John's; for Placentia Bay, add 2 hours; for St. Peter's 1h. 50m.; for Ferrolle, on the French Shore, 4 hours, &c.—See Table LVII. of Norie's Epitome.

in a
the
vial-
acific
Earth
reen-
(a.c.t.)
outh
Good
ca.—
nwich
Earth
25' b.
C.B
7
6577
&c.
ay 15
o 22
o 24
o 26
ne 20
o 21
er 24
ust 26
ber 29
em. 9
o 27
o 30
ber 21
25

, 1864.
) com-
6, 1864
North.
West.

The Weather.

Result of Meteorological Observations for the Years, 1860, 1861, 1862, taken from the Colonial Building, St. John's, Newfoundland, by E. M. J. DELANEY, Esq., C.E., Observer.—Lat. N. 47° 34' 30"—Long. W. 52° 39' 45"—170 feet above Sea Level.

1860.

	Inches.	Date
Max. height of Bar. corrected to sea level	30.36	February 29th
Min. do. do.	29.56	do. 11th
Mean do. do.	29.60	
Max. height of Ther.	80°	Aug. 11th & 15th
Min. do. do.	-11½°	February 3rd
Mean temp. for year	41°	
Quantity of Rain and melted Snow in inches	82.040	the year
Prevailing Winds	N W. & S S W.	
Rain fell on 117 days; Snow on 43; Fog 109; Thunder and Lightning on 5.		

1861.

Max. height of Bar. corrected to sea level	30.30	October 27th
Min. do. do.	28.50	January 20th
Mean do. do.	29.40	
Max. height of Ther.	86°	July 10th
Min. do. do.	-3°	February 9th
Quantity of Rain and melted Snow in inches	58.630	the year
Prevailing Winds	N N W. & S S W.	
Rain fell on 108 days; Snow on 40; Thunder and Lightning 4; Fog 92; 30th June a large Comet appeared.		

1862.

Max. height of Bar. corrected to sea level	30.50	May 2d
Min. do. do.	28.57	January 3rd
Mean do. do.	29.53	
Max. height of Ther.	75°	July 6th
Min. do. do.	-7°	February 16th
Mean temp. for year	41°	
Quantity of Rain and melted Snow in inches	53.670	the year
Prevailing Winds	N N W. & S W.	
Rain fell on 98 days; Snow on 44; Fog 70; Thunder and Lightning 4; Harbor blockaded with ice from middle of April to middle of June.		

JANUARY, 31 DAYS.

MOON'S PHASES.

LAST QUARTER.....	2nd day,	4h, 8m,	Morning
NEW MOON.....	9th day,	4h, 15m,	Morning
FIRST QUARTER.....	15th day,	7h, 36m,	Evening
FULL MOON.....	23rd day,	6h, 32m,	Evening
LAST QUARTER....	31st day,	8h, 47m,	Evening

Day of W.	Day of M.	Sun rises at St. John's.	Sun sets at St. John's.	G. app. time.		High Water at St. John's.			Memoranda.
				Sun's Declination.	Equa of time. add.	P. M.	A. M.	A. M.	
F	1	7 55	4 13	23 3	3 38	11 57	11 38		First meeting of Local Legislature, 1833.
S	2	7 54	4 14	22 58	1 6	0 21			
Su.	3	7 54	4 15	22 53	1 34	1 31	1 3		2d Sunday after Christmas.
M	4	7 54	4 16	22 47	5 2	2 40	2 5		
T	5	7 54	4 17	22 41	5 29	3 53	3 16		
W	6	7 54	4 19	22 34	5 56	5 7	4 32		Epiphany.
Th.	7	7 53	4 20	22 27	6 23	5 38	5 14		
F	8	7 53	4 21	22 19	6 49	6 33	6 7		[opened, 1850.
S	9	7 53	4 22	22 11	7 14	7 25	7 0		R. Catholic Cathedral
Su.	10	7 52	4 24	22 2	7 39	8 14	7 49		1st Sun. after Epiphany
M	11	7 52	4 25	21 53	8 3	9 2	8 38		
T	12	7 51	4 26	21 44	8 27	9 48	9 24		
W	13	7 51	4 27	21 34	8 50	10 35	10 13		
Th.	14	7 50	4 29	21 24	9 13	11 20	10 57		Amalgam'd Assembly closed, 1847.
F	15	7 50	4 30	21 13	9 34		11 42		
S	16	7 49	4 31	21 2	9 55	1 10	0 29		
Su.	17	7 48	4 33	20 51	10 16	1 55	1 22		2d Sun. after Epiphany
M	18	7 47	4 34	20 39	10 35	3 9	2 32		
T	19	7 46	4 36	20 27	10 54	4 27	3 48		Watt born, 1736.
W	20	7 45	4 37	20 14	11 12	5 45	5 6		
Th.	21	7 44	4 38	20 1	11 30	6 7	5 38		Independence of U. States ack'd, 1783.
F	22	7 44	4 40	19 48	11 47	6 56	6 33		
S	23	7 43	4 42	19 34	12 2	7 37	7 18		
Su.	24	7 42	4 43	19 20	12 17	8 13	7 56		Septuagesima.
M	25	7 41	4 45	19 5	12 32	8 46	8 29		Marriage of Princess Royal, 1858.
T	26	7 40	4 46	18 50	12 45	9 16	9 2		
W	27	7 38	4 48	18 35	12 58	9 47	9 32		
Th.	28	7 37	4 49	18 20	13 10	10 18	10 2		2d Sess. 8th Gen. Ass. opened, 1862.
F	29	7 36	4 51	18 4	13 21	10 49	10 34		
S	30	7 35	4 52	17 48	13 31	11 22	11 6		
Su.	31	7 33	4 54	17 31	13 41		11 41		Sexagesima.

JANUARY.—January (Latin *Januarius*) was so called by the Romans from Janus, one of their superior deities, to whom the first day of the year was sacred, and through whom they offered their prayers to the gods; hence the name is used to signify gate of the year. Janus was represented with two faces; one old and wrinkled, and looking backward; the other face young and smiling, and looking forward.

FEBRUARY, 29 DAYS.

MOON'S PHASES.

NEW MOON.....	7th day,	2h, 30m,	Evening
FIRST QUARTER.....	14th day,	9h, 54m,	Morning
FULL MOON	22nd day,	1h, 30m,	Evening

Day of W.	Day of M.	Sun rises at St. John's.	Sun sets at St. John's.	G. app. time.		High Water at St. John's.		Memoranda.
				Sun's Declination.	Equation of time.	P. M.	A. M.	
M	1	7 32	4 55	S 17 14	13 49	0 46	0 23	
T	2	7 31	4 57	16 57	13 57	1 44	1 13	Candlemas Day.
W	3	7 29	4 59	16 40	14 4	3 13	2 26	
Th.	4	7 28	5 0	16 22	14 10	4 32	3 50	
F	5	7 27	5 2	16 4	14 16	5 39	5 12	[before Legis. 1857.
S	6	7 25	5 3	15 46	14 21	6 18	5 48	Fishery Conven. laid
SU.	7	7 24	5 5	15 27	14 24	7 12	6 45	Shrove Sunday.
M	8	7 22	5 7	15 9	14 28	8 1	7 36	
T	9	7 20	5 8	14 50	14 30	8 46	8 23	
W	10	7 19	5 10	14 30	14 31	9 30	9 7	Ash Wednesday—Qn.
Th.	11	7 17	5 11	14 11	14 32	10 12	9 51	Victoria married 1840
F	12	7 16	5 13	13 51	14 32	10 53	10 32	
S	13	7 14	5 15	13 31	14 31	11 34	11 14	
SU.	14	7 13	5 16	13 11	14 29			1st Sunday in Lent—
M	15	7 11	5 18	12 51	14 27	1 14	0 46	Valentine's Day
T	16	7 9	5 19	12 30	14 23	2 26	1 46	
W	17	7 7	5 21	12 9	14 20	3 49	3 6	B.I. Soc'y founded 1806
Th.	18	7 6	5 22	11 48	14 15	5 10	4 31	Luther died, 1546.
F	19	7 4	5 24	11 27	14 9	6 46	5 18	
S	20	7 3	5 25	11 6	14 3	8 36	6 14	
SU.	21	7 2	5 26	10 44	13 57	7 17	6 58	2d Sunday in Lent.
M	22	7 0	5 27	10 22	13 49	7 51	7 34	
T	23	6 59	5 29	10 0	13 41	8 21	8 7	Washington born, 1732
W	24	6 57	5 30	9 38	13 33	8 52	8 37	Nap. I. escaped from
Th	25	6 55	5 32	9 16	13 23	9 21	9 7	Elba, 1815.
F	26	6 52	5 34	8 54	13 14	9 51	9 35	
S	27	6 51	5 35	8 32	13 3	10 22	10 6	
SU.	28	6 49	5 36	8 9	12 52	10 55	10 38	3rd Sunday in Lent
M	29	6 48	5 38	S 7 46	12 41	11 32	11 13	

FEBRUARY.—February (Latin, *Februarius*) received its name from Februalia, a feast of sacrifices and purifications held by the Romans in this month, in the vain hope of being cleansed from the sins of the whole year. It corresponds to ADAR (Ezra vi. 15), the sixth civil, and twelfth sacred month of the Jews. By the Saxons it was called *Sproutkele*, as cabbages begin to sprout now; and also *Sol-monath*, the month when pancakes were offered to Sol, or the Sun.

MARCH, 31 DAYS.

MOON'S PHASES.

LAST QUARTER.....	1st day,	9h, 41m,	Morning
NEW MOON.....	8th day,	0h, 29m,	Morning
FIRST QUARTER.....	15th day,	2h, 37m,	Morning
FULL MOON.....	23rd day,	6h, 54m,	Morning
LAST QUARTER.....	30th day,	6h, 49m,	Evening

Day of W.	Day of M.	Sun rises at St. John's.		Equa of time.		High Water at St. John's.		Memoranda.
		H. M.	H. M.	Sun's Declination.	Equa of time.	P. M.	A. M.	
T	1	6 45	5 39	S 7 23	12 29		11 53	St. David
W	2	6 44	5 41	7 1	12 16	1 14	0 43	J. Wesley died, 1791
Th.	3	6 42	5 42	6 38	12 4	2 36	1 51	B. & F. Bible Society established, 1804
F	4	6 40	5 44	6 14	11 50	4 9	3 24	
S	5	6 38	5 45	5 51	11 37	5 24	4 57	
SU.	6	6 36	5 47	5 28	11 22	6 1	5 38	4th Sunday in Lent
M	7	6 34	5 48	5 5	11 8	6 53	6 28	7th Gen. Ass dissolved by proclamation, 1861
T	8	6 32	5 50	4 41	10 53	7 40	7 17	
W	9	6 30	5 51	4 18	10 38	8 23	8 2	
Th.	10	6 28	5 53	3 54	10 22	9 7	8 45	New South Wales discovered, 1787
F	11	6 26	5 54	3 31	10 6	9 48	9 28	
S	12	6 24	5 56	3 7	9 50	10 27	10 8	
SU.	13	6 22	5 57	2 44	9 33	11 7	10 48	5th Sunday in Lent
M	14	6 20	5 58	2 20	9 16	11 51	11 30	
T	15	6 18	5 59	1 56	8 59	0 16		
W	16	6 16	6 1	1 33	8 42	1 45	1 10	
Th.	17	6 14	6 3	1 9	8 24	3 8	2 26	St. Patrick
F	18	6 12	6 4	0 45	8 6	4 32	3 50	Prin. Louisa born, 1848
S	19	6 10	6 6	S 0 21	7 48	5 33	5 9	Sir I. Newton died, 1727
SU.	20	6 8	6 7	N 0 2	7 30	6 5	5 41	Palm Sunday
M	21	6 6	6 8	0 26	7 12	6 46	6 26	
T	22	6 4	6 10	0 50	6 53	7 21	7 2	
W	23	6 2	6 11	1 13	6 35	7 51	7 36	
Th.	24	6 0	6 13	1 37	6 17	8 22	8 6	
F	25	5 58	6 14	2 0	5 58	8 54	8 36	Lady Day — Good Friday
S	26	5 56	6 16	2 24	5 39	9 24	9 8	
SU.	27	5 54	6 17	2 47	5 21	9 58	9 41	Easter Sunday
M	28	5 52	6 18	3 11	5 2	10 33	10 16	
T	29	5 50	6 20	3 34	4 44	11 12	10 53	
W	30	5 48	6 21	3 57	4 26		11 36	Peace with Russia, 1856
Th.	31	5 46	6 23	N 4 21	4 7	1 1	0 28	

MARCH.—March (Latin, *Martius*) was so named by the Romans in honor of Mars, their god of war. In this month the Gothic tribes went out on warlike expeditions. It answers to NISAN, or ABIB (Neh. ii. 1; Deut. xvi. 1), the seventh of the civil, and the first of the sacred year of the Jews. By the Saxons it was named *Hlyd-monath*, the loud or windy month.

APRIL, 30 DAYS.

MOON'S PHASES.

NEW MOON.....	6th day, 10h, 18m, Morning
FIRST QUARTER.....	13th day, 8h, 39m, Evening
FULL MOON.....	21st day, 9h, 48m, Evening
LAST QUARTER.....	20th day, 1h, 4m, Morning

Day of W	Day of M	Sun rises at St John's.	Sun sets at St John's.	G. app. time.		High Water at St. John's.		Memoranda.
				Sun's Declination.	Equation of time	P. M.	A. M.	
		H. M.	H. M.	° ' "	M. S.	P. M.	A. M.	
F	1	5 44	6 24	N 4 44	3 49	2 25	1 38	
S	2	5 42	6 25	5 7	3 31	3 53	3 8	
SU.	3	5 40	6 27	5 30	3 13	5 9	4 35	Low Sunday
M	4	5 38	6 28	5 53	2 55	5 40	5 20	Abdic. of Nap. I, 1814
T	5	5 36	6 30	6 16	2 38	6 31	6 7	
W	6	5 34	6 31	6 38	2 21	7 17	6 56	
Th.	7	5 32	6 32	7 1	2 4	7 51	7 38	Prince Leopold born, 1853
F	8	5 31	6 33	7 23	1 47	8 43	8 22	
S	9	5 28	6 35	7 45	1 30	9 23	9 4	
SU.	10	5 26	6 36	8 8	1 14	10 3	9 44	2d Sunday after Easter
M	11	5 24	6 38	8 30	0 57	10 42	10 22	
T	12	5 22	6 39	8 52	0 42	11 25	11 3	
W	13	5 20	6 41	9 13	0 26	11 48	11 3	R. C. Emancipa. 1829
Th.	14	5 18	6 42	9 35	0 11	1 10	0 38	Princess Beatrice born 1857. [land, 1856
F	15	5 16	6 44	9 56	0 4	2 24	1 45	Nap. III. visited Eng-
S	16	5 15	6 45	10 18	0 19	3 40	3 3	3d Sunday after Easter
SU.	17	5 13	6 46	10 39	0 33	4 50	4 16	Byron died, 1824
M	18	5 11	6 48	11 0	0 47	5 50	5 20	
T	19	5 9	6 49	11 20	1 0	6 5	5 44	
W	20	5 7	6 50	11 41	1 13	6 42	6 24	
Th.	21	5 5	6 52	12 1	1 26	7 17	7 1	
F	22	5 4	6 53	12 21	1 38	7 51	7 35	
S	23	5 2	6 54	12 41	1 50	8 26	8 9	St. George
SU.	24	5 0	6 56	13 1	2 1	9 1	8 44	4th Sunday after Easter
M	25	4 58	6 57	13 21	2 12	9 38	9 20	Prin. Alice born, 1843
T	26	4 56	6 59	13 40	2 22	10 19	9 57	
W	27	4 55	7 0	13 59	2 31	11 1	10 38	
Th.	28	4 53	7 2	14 18	2 41	11 54	11 26	Test and Corporation
F	29	4 51	7 3	14 37	2 49	0 55		Acts repealed, 1828
S	30	4 50	7 4	N 14 55	2 57	2 13	1 32	

Equation of time to be added to apparent time to the 14th, and to be subtracted the remainder of the month.

APRIL.—April (Latin *Aprilis*) is so called from *aperire*, 'to open' in allusion to the opening of the young buds of trees and flowers and the general development of vegetation at this season.

MAY, 31 DAYS.

MOON'S PHASES:

NEW MOON.....	5th day,	8h, 43m,	Evening
FIRST QUARTER.....	13th day,	2h, 50m,	Evening
FULL MOON.....	21st day,	9h, 54m,	Morning
LAST QUARTER.....	28th day,	5h, 50m,	Morning

Day of W.	Day of M.	Sun		G. app. time		High		Memoranda.
		rises at St. John's.	Sun sets at St. John's.	Sun's Decli- nation.	Equa of time. subt.	Water at St. John's.		
		H. M.	H. M.	o ' "	M. S.	P. M.	A. M.	
Su.	1	4 48	7 6	N 15 13	3 5	3 32	2 54	Rogation Sunday
M	2	4 47	7 7	15 31	3 12	4 43	4 9	General Election, 1861
T	3	4 45	7 8	15 49	3 18	5 35	5 13	
W	4	4 43	7 10	16 6	3 24	6 7	5 47	
Th.	5	4 42	7 11	16 23	3 30	6 57	6 32	Ascension Day
F	6	4 40	7 12	16 40	3 34	7 41	7 21	
S	7	4 39	7 14	16 57	3 38	8 23	8 3	
Su.	8	4 38	7 15	17 13	3 42	9 3	8 45	Sun. after Ascension
M	9	4 36	7 16	17 29	3 45	9 43	9 23	
T	10	4 35	7 18	17 45	3 48	10 22	10 2	
W	11	4 33	7 19	18 0	3 49	11 1	10 43	
Th.	12	4 32	7 20	18 15	3 51	11 45	11 22	
F	13	4 31	7 21	18 30	3 52	0 33	0 8	1st Ses. 8th Gen. Assem
S	14	4 29	7 23	18 45	3 52	1 30	1 0	opened, 1861—Riots
Su.	15	4 28	7 24	18 59	3 52	2 41	2 6	Whit Sunday
M	16	4 27	7 25	19 13	3 51	3 45	3 14	
T	17	4 26	7 27	19 26	3 49	4 49	4 19	
W	18	4 24	7 28	19 40	3 47	5 31	5 17	Trial by Jury instituted
Th.	19	4 23	7 29	19 52	3 45	6 1	5 42	1270
F	20	4 22	7 30	20 5	3 42	6 43	6 22	Foun. Stone R. C.
S	21	4 21	7 31	20 17	3 38	7 25	7 4	Cathedral laid, 1841
Su.	22	4 21	7 32	20 29	3 34	8 3	7 43	Trinity Sunday
M	23	4 19	7 33	20 40	3 30	8 42	8 21	
T	24	4 18	7 34	20 52	3 24	9 23	9 2	Qn. Victoria born, 1819
W	25	4 17	7 35	21 2	3 19	10 8	9 45	Prin. Helena born, 1846
Th.	26	4 16	7 36	21 13	3 13	10 54	10 29	Corpus Christi
F	27	4 15	7 38	21 23	3 6	11 47	11 20	
S	28	4 14	7 40	21 33	2 59	0 49		
Su.	29	4 13	7 41	21 42	2 51	1 55	1 22	1st Sun. after Trinity
M	30	4 13	7 41	21 51	2 43	3 6	2 30	
T	31	4 12	7 42	N 21 59	2 34	4 12	3 41	

MAY.—May (Latin, *Maius*) is so denominated from Maia, the most beautiful of the constellation Pleiades, and the fabled mother of Mercury, one of the false deities. The corresponding Jewish month was SIVAN (Esth. viii. 9), the ninth of the civil, and third of the sacred year.

JUNE, 30 DAYS.

MOON'S PHASES.

NEW MOON.....	4th day,	8h, 10m,	Morning
FIRST QUARTER.....	12th day,	8h, 18m,	Morning
FULL MOON.....	19th day,	7h, 24m,	Evening
LAST QUARTER.....	26th day,	10h, 44m,	Morning

Day of W.	Day of M.	Sun		G. app. time.			High Water at St. John's.			Memoranda.
		rises at St. John's.	Sun sets at St. John's.	Sun's Declination.	Equation of time.		P. M.	A. M.		
W	1	4 12	7 43	o	'					
Th.	2	4 12	7 44	N 22	8	2 25	5 15	4 43		
F	3	4 11	7 45	22	23	2 6	6 37	6 11		George III. born, 1738
S	4	4 10	7 45	22	30	1 56	7 24	7 1		Battle Magenta, 1859
Su.	5	4 10	7 46	22	37	1 46	8 9	7 48		2nd Sun. after Trinity
M	6	4 10	7 47	22	43	1 35	8 48	8 27		
T	7	4 9	7 48	22	49	1 24	9 25	9 7		
W	8	4 9	7 48	22	54	1 12	10 1	9 44		Sir Alex. Bannerman
Th.	9	4 9	7 49	22	59	1 1	10 39	10 21		arrived, 1857
F	10	4 8	7 50	23	4	0 49	11 17	10 59		
S	11	4 8	7 51	23	8	0 37		11 39		St. Barnabas
Su.	12	4 8	7 51	23	12	0 25	0 45	0 22		3rd Sun. after Trinity
M	13	4 7	7 52	23	15	0 12	1 40	1 10		
T	14	4 7	7 52	23	18	0 1	2 44	2 12		
W	15	4 6	7 53	23	21	0 13	3 45	3 14		Magna Charta signed,
Th.	16	4 6	7 53	23	23	0 26	4 47	4 16		1215
F	17	4 6	7 54	23	25	0 38	5 37	5 17		J. Wesley born, 1702
S	18	4 5	7 54	23	26	0 51	6 8	5 45		Battle Waterloo, 1815
Su.	19	4 6	7 55	23	27	1 4	6 57	6 32		4th Sun. after Trinity
M	20	4 7	7 55	23	27	1 17	7 40	7 19		Acc. Q. Victoria, 1837
T	21	4 7	7 55	23	28	1 30	8 27	8 4		Proclamation
W	22	4 8	7 56	23	27	1 43	9 13	8 51		
Th.	23	4 8	7 56	23	27	1 56	9 58	9 35		
F	24	4 9	7 56	23	25	2 8	10 46	10 20		St. John—Midsummer
S	25	4 9	7 56	23	24	2 21	11 38	11 12		
Su.	26	4 10	7 56	23	22	2 34	0 31			5th Sun. after Trinity
M	27	4 10	7 56	23	20	2 46	1 30	0 59		1st Sess. 8th Gen. Ass
T	28	4 10	7 56	23	17	2 58	2 36	2 0		prorog'd by pro. 1861
W	29	4 11	7 56	23	14	3 10	3 44	3 11		St. Peter
Th.	30	4 11	7 56	N 23	10	3 22	4 53	4 19		28—Cor. Q. Vict. 1838

Equation of time to be subtracted from apparent time to the 13th and to be added the remainder of the month.

JUNE.—June, (Latin, *Junius*), was so named from Juno, one of the fabled Goddesses of the Romans: It answers to the Jewish TAMMUZ, the tenth of their civil, and fourth of their sacred year.

JULY, 31 DAYS.

MOON'S PHASES.

NEW MOON.....	3rd day,	8h, 53m,	Evening
FIRST QUARTER.....	12th day,	0h, 21m,	Morning
FULL MOON.....	19th day,	3h, 5m,	Morning
LAST QUARTER.....	25th day,	5h, 15m,	Evening

Day of W.	Day of M.	Sun		G. app. time.		High		Memoranda.
		rises at St. John's.	Sun sets at St. John's.	Sun's Declination.	Equa of time. add.	Water at St. John's.		
		H. M.	H. M.	o ' N	M. S.	P. M.	A. M.	
F	1	4 12	7 55	23 6	3 34	5 25	5 1	Sir R. Peel died, 1850
S	2	4 13	7 55	23 2	3 45	6 21	5 55	
Su.	3	4 13	7 54	22 57	3 56	7 11	6 47	6th Sun. after Trinity.
M	4	4 14	7 54	22 52	4 7	7 54	7 33	Am. Independ. 1776.
T	5	4 15	7 54	22 46	4 18	8 34	8 15	
W	6	4 15	7 53	22 40	4 28	9 9	8 52	
Th.	7	4 16	7 53	22 34	4 38	9 43	9 25	Free Trade Act pass- ed, 1855.
F	8	4 17	7 53	22 27	4 47	10 17	10 0	
S	9	4 18	7 52	22 20	4 56	10 51	10 34	
Su.	10	4 19	7 51	22 12	5 5	11 27	11 8	7th Sun. after Trinity
M	11	4 19	7 51	22 4	5 13	11 46		Cape Ray & C. Breton
T	12	4 21	7 50	21 56	5 20	0 50	0 28	Elec. Cable laid, 1856
W	13	4 21	7 50	21 47	5 28	1 43	1 15	
Th.	14	4 22	7 49	21 38	5 34	2 53	2 18	
F	15	4 23	7 48	21 29	5 40	4 1	3 27	St. Swithin's Day.
S	16	4 24	7 47	21 19	5 46	5 11	4 37	1st French Rev. 1789
Su.	17	4 25	7 46	21 9	5 51	5 40	5 23	8th Sun. after Trinity
M	18	4 26	7 45	20 58	5 56	6 35	6 9	
T	19	4 27	7 44	20 48	6 0	7 25	7 1	
W	20	4 28	7 43	20 36	6 3	8 14	7 48	
Th.	21	4 29	7 42	20 25	6 6	9 2	8 38	
F	22	4 30	7 41	20 13	6 9	9 45	9 23	[St. John's, 1860.
S	23	4 32	7 40	20 1	6 10	10 31	10 9	Prince Wales arrives at
Su.	24	4 33	7 39	19 48	6 12	11 18	10 53	9th Sun. after Trinity.
M	25	4 34	7 38	19 35	6 12		11 41	St. James.
T	26	4 35	7 37	19 22	6 12	0 58	0 30	Prince Wales leaves St
W	27	4 36	7 36	19 8	6 12	2 1	1 28	John's for Sydney, 1860
Th.	28	4 37	7 35	18 54	6 11	3 16	2 38	
F	29	4 38	7 34	18 40	6 9	4 33	3 54	French Revolu., 1830.
S	30	4 39	7 32	18 26	6 7	5 23	5 8	Ig. Loyola died, 1556
Su.	31	4 41	7 31	N 18 11	6 4	6 9	5 41	10th Sun. after Trinity

JULY.—July (Latin, *Julius*), was originally called Quintilis, being the fifth month of the Roman calendar. Marc Antony designated it Julius, in honor of Caius Julius Cæsar, dictator of Rome, who was born in it, and who reformed the calendar. It answers to AB, the eleventh month of the Jewish civil year, and the fifth of their sacred year.

AUGUST, 31 DAYS.

MOON'S PHASES.

NEW MOON	2nd day, 11h, 3m, Morning
FIRST QUARTER.....	10th day, 2h, 27m, Evening
FULL MOON.....	17th day, 10h, 6m, Morning
LAST QUARTER.....	24th day, 2h, 34m, Morning

Day of W.	Day of M.	Sun		G. app. time.		High		Memoranda.
		rises	sets	Sun's Declination.	Equa. of time.	Water at St. John's.		
		at St. John's.				P. M.	A. M.	
M	1	4 42	7 29	N 17 56	6 1	6 59	6 36	Emancipa. of Slaves in W. Indies, 1834
T	2	4 44	7 28	17 41	5 57	7 38	7 18	
W	3	4 45	7 27	17 25	5 52	8 15	7 57	
Th.	4	4 46	7 25	17 9	5 47	8 48	8 32	[laid, 1858.
F	5	4 48	7 24	16 53	5 41	9 19	9 3	Atlantic Tel. Cable.
S	6	4 49	7 22	16 36	5 35	9 50	9 33	Prince Alfred b. 1844.
Su.	7	4 50	7 21	16 19	5 28	10 21	10 5	11th Sun. after Trinity
M	8	4 51	7 19	16 2	5 20	10 51	10 36	Canning died, 1827
T	9	4 53	7 18	15 45	5 12	11 28	11 9	Prince Henry of the Netherlands arr'd, 1845.
W	10	4 54	7 16	15 27	5 3			
Th.	11	4 55	7 15	15 10	4 54	0 57	0 30	
F	12	4 57	7 13	14 52	4 44	2 3	1 26	
S	13	4 58	7 11	14 33	4 33	3 22	2 44	
Su.	14	4 59	7 9	14 15	4 22	4 45	4 5	12th Sun. after Trinity
M	15	5 1	7 8	13 56	4 11	5 55	5 20	Gas first used in London, 1807.
T	16	5 2	7 6	13 37	3 58	6 18	6 2	
W	17	5 3	7 4	13 18	3 46	7 9	6 44	
Th.	18	5 5	7 3	12 59	3 32	7 58	7 33	
F	19	5 6	7 1	12 39	3 19	8 42	8 21	
S	20	5 7	6 59	12 19	3 5	9 25	9 5	Canada discov'd, 1508
Su.	21	5 9	6 57	11 59	2 50	10 11	9 46	13th Sun. after Trinity
M	22	5 10	6 55	11 39	2 35	10 55	10 33	Found. Stone St. John's
T	23	5 11	6 54	11 19	2 19	11 40	11 17	Wes. Church laid, 1856
W	24	5 13	6 52	10 58	2 4	0 34		
Th.	25	5 14	6 50	10 38	1 47	1 28	0 57	
F	26	5 15	6 48	10 17	1 31	2 49	2 5	Birth Prince Consort, 1819.
S	27	5 17	6 46	9 56	1 14	4 8	3 29	
Su.	28	5 18	6 44	9 34	0 56	5 22	4 46	14th Sun. after Trinity
M	29	5 19	6 42	9 13	0 38	5 51	5 23	
T	30	5 21	6 40	8 52	0 20	6 39	6 17	
W	31	5 22	6 38	N 8 30	0 2	7 16	6 59	J. Bunyan died, 1688.

AUGUST.—August was originally called by the Romans *Sextilis*, or the sixth month; which was afterwards, by the senate, changed to *Augustus*, in honor of the Emperor. It corresponds to the Jewish **ELUL** (Neh. vi. 15), their twelfth civil, or sixth sacred month.

SEPTEMBER, 30 DAYS.

MOON'S PHASES.

NEW MOON.....	1st day,	2h, 37m,	Morning
FIRST QUARTER.....	9th day,	2h, 20m,	Morning
FULL MOON.....	15th day,	5h, 39m,	Evening
LAST QUARTER.....	22nd day,	3h, 24m,	Evening
NEW MOON.....	30th day,	7h, 13m,	Evening

Day of W	Day of M.	Sun		G. app. time.		High Water at St. John's.		Memoranda.
		rises at St John's.	Sun sets	Sun's Declination.	Equa. of time subt.	P. M.	A. M.	
Th.	1	5 23	6 36	N 8 8	0 17	7 49	7 38	
F.	2	5 25	6 35	7 46	0 36	8 22	8 7	
S.	3	5 26	6 33	7 24	0 55	8 51	8 36	Cromwell died, 1658.
Su.	4	5 27	6 31	7 2	1 14	9 20	9 6	15th Sun. after Trinity
M.	5	5 29	6 28	6 40	1 34	9 51	9 37	1st Am. Congress, 1774
T.	6	5 30	6 26	6 17	1 54	10 22	10 6	
W.	7	5 31	6 24	5 55	2 14	10 55	10 38	
Th.	8	5 33	6 23	5 32	2 35	11 35	11 15	Fall of Sevastop. 1855
F.	9	5 34	6 21	5 10	2 55	0 34	0 18	R.C. Cathed. cons., 1855
S.	10	5 35	6 18	4 47	3 16	1 29	0 54	
Su.	11	5 37	6 16	4 24	3 37	2 55	2 12	16th Sun. after Trinity
M.	12	5 38	6 14	4 1	3 58	4 21	3 39	Columbus discovered America, 1492
T.	13	5 39	6 12	3 38	4 19	5 18	4 58	Wellington died, 1852
W.	14	5 41	6 10	3 15	4 40	5 58	5 33	13—Wolte killed at Quebec, 1759
Th.	15	5 42	6 8	2 52	5 1	6 50	6 26	
F.	16	5 43	6 6	2 29	5 22	7 34	7 11	
S.	17	5 45	6 4	2 5	5 44	8 19	7 57	
Su.	18	5 46	6 2	1 42	6 5	9 4	8 42	17th Sun. after Trinity
M.	19	5 47	6 0	1 19	6 26	9 46	9 25	
T.	20	5 49	5 58	0 56	6 47	10 27	10 6	Battle of Alma, 1854
W.	21	5 50	5 56	0 32	7 8	11 9	10 48	St. John's Cathedral consecrated, 1850
Th.	22	5 51	5 54	N 0 9	7 29	11 58	11 33	
F.	23	5 52	5 53	S 0 15	7 50	0 56	0 24	
S.	24	5 54	5 50	0 38	8 10	2 14	1 31	
Su.	25	5 56	5 48	1 1	8 31	3 35	2 55	18th Sun. after Trinity
M.	26	5 57	5 46	1 25	8 51	4 48	4 10	St. Cyprian
T.	27	5 52	5 44	1 48	9 11	5 31	5 8	
W.	28	6 0	5 42	2 12	9 31	6 7	5 47	[Kars, 1855
Th.	29	6 1	5 40	2 35	9 51	6 47	6 28	St. Michael—Battle of
F.	30	6 2	5 38	S 2 58	10 10	7 20	7 5	Whitefield died, 1770

SEPTEMBER.—September, now the ninth, was anciently the seventh month, as is indicated by its name, which is derived from *septem*, signifying "seven;" *ember*, or *imber*, is from the Latin, and signifies "showers," as frequently the rainy season begins this month.

OCTOBER, 31 DAYS.

MOON'S PHASES.

FIRST QUARTER.....	8th day,	0h, 7m,	Evening
FULL MOON.....	15th day,	2h, 46m,	Morning
LAST QUARTER.....	22nd day,	7h, 57m,	Morning
NEW MOON.....	30th day,	11h, 58m,	Morning

Day of W.	Day of M.	Sun		G. app. time.		High		Memoranda.
		rises	Sun sets	Sun's	Equa	Water at		
		at St. John's.	at St. John's.	Declination.	of time. subt.	St. John's.		
		H. M.	H. M.	o ' "	M. S.	P. M.	A. M.	
S	1	6 4	5 36	S 3 22	10 29	7 52	7 35	
Su.	2	6 5	5 39	3 45	10 48	8 20	8 6	19th Sun. after Trinity
M	3	6 6	5 31	4 8	11 6	8 52	8 36	1st Steamer on Hud- son River, 1807
T	4	6 8	5 29	4 32	11 24	9 24	9 7	
W	5	6 9	5 27	4 55	11 42	9 55	9 40	
Th.	6	6 11	5 25	5 18	11 59	10 32	10 13	
F	7	6 12	5 23	5 41	12 16	11 15	10 52	1st Telegraph Mes. from Cape Breton, 1856
S	8	6 14	5 22	6 4	12 33	11 37		
Su.	9	6 15	5 20	6 27	12 49	1 10	0 44	20th Sun. after Trinity
M	10	6 17	5 18	6 49	13 5	2 36	1 51	
T	11	6 18	5 16	7 12	13 20	4 1	3 19	Steam Com. establish- ed in Conception Bay, 1852
W	12	6 20	5 14	7 35	13 35	5 8	4 36	
Th.	13	6 21	5 12	7 57	13 49	5 37	5 23	
F	14	6 22	5 10	8 19	14 3	6 26	6 3	
S	15	6 24	5 8	8 42	14 16	7 11	6 49	
Su.	16	6 25	5 6	9 4	14 28	7 55	7 33	21st Sun. after Trinity
M	17	6 27	5 1	9 26	14 40	8 42	8 18	
T	18	6 28	5 2	9 48	14 52	9 24	9 3	
W	19	6 30	5 0	10 9	15 3	10 4	9 45	Free Trade Act receiv'd
Th.	20	6 31	4 58	10 31	15 13	10 46	10 24	Royal assent, 1855
F	21	6 33	4 57	10 52	15 22	11 34	11 9	Battle Trafalgar, 1805
S	22	6 34	4 55	11 14	15 31		11 59	
Su.	23	6 36	4 53	11 35	15 39	0 56	0 25	22d Sun. after Trinity
M	24	6 37	4 51	11 56	15 46	2 13	1 32	
T	25	6 39	4 50	12 16	15 53	3 27	2 51	
W	26	6 40	4 48	12 37	15 59	4 38	4 4	
Th.	27	6 42	4 46	12 57	16 4	5 30	5 6	
F	28	6 43	4 45	13 17	16 8	6 11	5 52	St. Simon and St. Jude
S	29	6 45	4 43	13 37	16 12	6 48	6 30	
Su.	30	6 46	4 41	13 57	16 15	7 21	7 5	23d Sun. after Trinity
M	31	6 48	4 40	S 14 17	16 17	7 54	7 38	Hallow Eve

○ OCTOBER.—October derives its name from the Latin word *octo*, "eight," indicating the place it held in the Roman calendar, and *imber*, or "shower." To the Jews it was known as *BUL*, signifying decay, as in the fall of the leaf (1 Kings vi. 38), or *MARCHESVAN*, as it was called after the captivity.

NOVEMBER, 30 DAYS.

MOON'S PHASES.

FIRST QUARTER.....	6th day,	8h, 22m,	Evening
FULL MOON.....	13th day,	2h, 3m,	Evening
LAST QUARTER.....	21st day,	3h, 46m,	Morning
NEW MOON..	29th day,	3h, 47m,	Morning

Day of W.	Day of M.	Sun		G. app. time.		High		Memoranda.
		rises	sets	Sun's Declination.	Equa of time. subt.	Water at St. John's.		
		H. M.	H. M.	o ' "	M. S.	P. M.	A. M.	
T	1	6 49	4 38	S 14 36	16 18	8 26	8 10	All Saints
W	2	6 51	4 36	14 55	16 19	9 1	8 44	
Th.	3	6 53	4 35	15 14	16 18	9 37	9 19	Free St. Andrew's
F	4	6 54	4 33	15 32	16 17	10 15	9 57	Church opened, 1850
S	5	6 56	4 32	15 50	16 15	11 0	10 37	
Su.	6	6 57	4 30	16 8	16 12	11 53	11 24	24th Sun. after Trinity
M	7	6 59	4 29	16 26	16 9	0 54	0 21	General Election, 1859
T	8	7 0	4 27	16 44	16 4	2 14	1 33	
W	9	7 2	4 26	17 1	15 59	3 31	2 54	Birth Prin. Wales, 1841
Th.	10	7 3	4 25	17 18	15 53	4 30	4 9	Nfld. and New York
F	11	7 5	4 24	17 34	15 46	5 10	4 51	Telegraph opened, 1856.
S	12	7 6	4 22	17 51	15 38	6 4	5 39	
Su.	13	7 8	4 21	18 7	15 30	6 53	6 30	25th Sun. after Trinity
M	14	7 10	4 20	18 22	15 20	7 40	7 17	Free Trade procl'd, 1855
T	15	7 11	4 19	18 38	15 10	8 23	8 1	
W	16	7 12	4 18	18 53	14 59	9 5	8 44	
Th.	17	7 14	4 16	19 7	14 47	9 46	9 25	
F	18	7 15	4 15	19 22	14 34	10 26	10 5	[Funeral, 1852
S	19	7 17	4 14	19 36	14 20	11 10	10 48	Duke of Wellington's
Su.	20	7 18	4 13	19 49	14 6	11 54	11 32	26th Sun. after Trinity
M	21	7 20	4 12	20 2	13 51	0 44	0 17	Princess Royal born, 1840
T	22	7 21	4 11	20 15	13 34	1 51	1 15	
W	23	7 23	4 11	20 28	13 18	2 57	2 24	
Th	24	7 24	4 10	20 40	12 59	4 1	3 30	Peace with U.S., 1814
F	25	7 26	4 9	20 52	12 41	5 3	4 45	
S	26	7 27	4 8	21 3	12 22	5 36	5 15	Kars capitulated, 1855
Su.	27	7 28	4 7	21 14	12 2	6 13	5 50	Advent Sunday
M	28	7 30	4 7	21 25	11 41	6 51	6 32	[1857
T	29	7 31	4 6	21 35	11 20	7 29	7 11	Wes. Church opened,
W	30	7 32	4 6	S 21 45	10 58	8 9	7 50	St. Andrew

NOVEMBER.—November is so named from the Latin *novem* "nine," it being the ninth month of the Roman calendar. It corresponds to the Jewish *CHISLEV* (Neh. i. 1), which signifies *chilled*, the third month of their civil, and ninth of their sacred year.

Evening
Morning
Morning
Morning

nda.

er Trinity
er on Hud
1807

Mes. from
n, 1856
er Trinity

establish-
ception

er Trinity

pt receiv'd
ent, 1855
gar, 1805

er Trinity

d St. Jude

er Trinity

word *octo*,
ndar, and
signifying
ESVAN, as

DECEMBER, 31 DAYS.

MOON'S PHASES.

FIRST QUARTER.....	6th day,	4h; 3m,	Morning
FULL MOON.....	13th day,	3h, 42m,	Morning
LAST QUARTER....	21st day,	1h; 32m,	Morning
NEW MOON.....	28th day,	5h, 51m,	Evening

Day of W.	Day of M.	Sun		G. app. time.		High Water at St. John's.		Memoranda.
		rises at St. John's.	Sun sets at St. John's.	Sun's Declination.	Equa of time.	P. M.	A. M.	
Th.	1	7 33	4 5	21 52	10 35	8 46	8 27	
F.	2	7 35	4 5	22 3	10 12	9 26	9 6	[opened, 1843
S.	3	7 36	4 4	22 11	9 48	10 7	9 47	St. Andrew's Kirk
SU.	4	7 37	4 4	22 20	9 23	10 53	10 30	2d Sun. in Advent
M.	5	7 38	4 3	22 27	8 58	11 44	11 19	
T.	6	7 39	4 3	22 34	8 32	0 12		
W.	7	7 40	4 3	22 41	8 6	1 11	0 40	
Th.	8	7 42	4 3	22 47	7 40	2 24	1 47	
F.	9	7 43	4 3	22 53	7 13	3 37	2 59	Sons of Tem.organiz'd
S.	10	7 44	4 3	22 59	6 46	4 47	4 11	in St. John's, 1850
SU.	11	7 44	4 3	23 4	6 18	5 46	5 16	3d Sun. in Advent
M.	12	7 45	4 3	23 8	5 50	6 31	6 11	
T.	13	7 46	4 3	23 12	5 21	7 27	7 3	
W.	14	7 47	4 3	23 16	4 53	8 10	7 49	
Th.	15	7 48	4 3	23 19	4 24	8 52	8 32	
F.	16	7 49	4 3	23 21	3 54	9 32	9 11	C. Wesley born, 1708
S.	17	7 49	4 4	23 24	3 25	10 7	9 49	
SU.	18	7 50	4 4	23 25	2 55	10 45	10 26	4th Sun. in Advent
M.	19	7 51	4 4	23 27	2 25	11 25	11 6	Napoleon III. procl'd
T.	20	7 51	4 5	23 27	1 56		11 45	Emperor, 1848
W.	21	7 52	4 5	23 28	1 26	0 27	0 5	St. Thomas
Th.	22	7 52	4 6	23 27	0 56	1 16	0 48	
F.	23	7 53	4 6	23 27	0 25	2 21	1 46	
S.	24	7 53	4 7	23 26	0 5	3 27	2 54	
SU.	25	7 53	4 7	23 24	0 35	4 33	3 59	CHRISTMAS DAY.
M.	26	7 54	4 8	23 22	1 4	5 23	5 4	St. Stephen
T.	27	7 54	4 9	23 19	1 34	5 59	5 35	St. John
W.	28	7 54	4 9	23 16	2 4	6 44	6 21	Innocents' Day.
Th.	29	7 54	4 10	23 13	2 33	7 29	7 7	
F.	30	7 55	4 11	23 9	3 2	8 12	7 51	
S.	31	7 55	4 12	S 23 5	3 31	9 15	8 53	

Equation of time to be subtracted from apparent time to the 23rd, and to be added the remainder of the month.

DECEMBER.—December derives its name from the Latin *decem*, "ten;" as, in the Roman year, instituted by Romulus, beginning with March, it was the tenth month.



COLONY OF NEWFOUNDLAND.

Governor, Commander-in-Chief, and Vice-Admiral—
HIS EXCELLENCY SIR ALEXANDER BANNERMAN, KNIGHT:

*Private Secretary—*Captain Coen, (Unattached.)

*Colonial Aide-de-Camp—*Edward L. Jarvis, Esquire.

The Executive Council.

Hon. Laurence O'Brien—*President in the absence of the Governor*

Hon. Hugh W. Hoyles—*Attorney General.*

Hon. Robert Carter, R.N.—*Acting Colonial Secretary.*

Hon. Nicholas Stabb.

Hon. John Bemister—*Receiver General.*

*Acting Clerk of the Council—*Hon. Robert Carter, R.N.

The Legislative Council.

Hon. Laurence O'Brien, *President, St. John's*

Hon. John Rochfort, M.D., do

Hon. Edward Morris, do

Hon. Nicholas Stabb, do

Hon. Robert J. Pinsent, do

Hon. Patrick Kough, do

Hon. Robert Kent, do

Hon. James S. Clift, do

Hon. Richard O'Dwyer, do

Hon. Edward White, do

Hon. Peter G. Tessier, do

*Master-in-Chancery and Clerk—*Hon. George H. Emerson, holding, by Her Majesty's patent, the rank and precedence of an Executive Councillor; *Usher of the Black Rod—*William F. Rennie; *Door Keeper—*James Walsh; *Assistant Door Keepers and Messengers—*James Corcoran and Ambrose Ronayne.

House of Assembly.

*Speaker—*FREDERICK B. T. CARTER, Esquire.

*District of St. John's East—*John Kent, Robert John Parsons, and John Kavanagh, Esquires.

*District of St. John's West—*John Casey, Thomas Talbot, and Henry Renouf, Esquires.

District of Harbor Grace—John Hayward, and Henry T. Moore, Esquires.

District of Carbonear—John Rorke, Esquire.

District of Harbor Maine—Patricia Nowlan, and Thomas Byrne, Esquires.

District of Port-de-Grave—John Leamon, Esquire.

District of Bay-de-Verds—Hon. John Bemister.

District of Trinity—Stephen Rendell, John Winter, and Frederick B. T. Carter, Esquires.

District of Bonavista—John H. Warren, Stephen March, and ———, Esquires.*

District of Twillingate and Fogo—William V. Whiteway, and Thomas Knight, Esquires.

District of Ferryland—Thomas Glen, and Edward D. Shea, Esqrs.

District of Placentia and St. Mary's—Ambrose Shea, Richard McGrath, and Pierce M. Barron, Esquires.

District of Burin—Hon. Hugh W. Hoyles, and Edward Evans, Esq.

District of Fortune Bay—Hon. Robert Carter, R.N.

District of Burgeo and LaPoile—Daniel Woodley Prowse, Esquire

Clerk—John Stuart; Clerk Assistant—Richard Holden; Solicitor—Thomas J. Kough; Sergeant-at-Arms—Hugh J. Furneaux; Librarian—Mrs. Feehan; Door Keeper—William Dalton; Messenger—Edward Kennedy; Under Door Keepers—Philip Brown, William Doyle; Assistant Messenger—Peter Higgins; Fireman—John Higgins.

Colonial Secretary's Office.

Acting Colonial Secretary—Hon. Robert Carter, R.N.; 1st Clerk—Joseph Crowdy; Second Clerk—Michael A. Kent; Office Keeper and Messenger—James Dunphy.

Surveyor General's Office.

Surveyor General—John H. Warren, Esq.; Deputy Surveyor—Edward M. J. Delaney, C.E.; Chainman—Richard Ryan.

DEPUTY SURVEYORS IN OUTPORTS.

Northern District—Alexander O'Donovan, Carbonear; Patrick Brine, Brigus; Benjamin Sweetland, Trinity; John T. Oakley, Greenspond; William Sweetland, Bonavista; Eugene Hamilton, Thomas Hanrahan, King's Cove; G. W. Hierlihy, Harbor Grace; Wm. Swansborough, New Ferlican, (Trinity Bay South); William Christian, Bay-de-Verds.

Southern District—Thomas Mockler, Bay Bulls; Michael Kelly, Ferryland; John Simms, Trepassey; John W. English, St. Mary's and Placentia; Henry Camp, Burin and Fortune Bay; James Harney, Burin; Thomas Winter, Fortune Bay.

* See Appendix - last page.

Revenue Establishment.

BOARD OF REVENUE.

President—Hon. John Bemister, Receiver General; Hon. Laurence O'Brien, Stephen Rendell, Esq., and Hon. Nicholas Stabb.

REVENUE ESTABLISHMENT.

Receiver General—Hon. J. Bemister. Assistant Collector—John Canning, Esq. Landing and Tide Surveyor—James S. Hayward. Landing Waiters—Edward L. Moore, Thomas E. Gaden. First Clerk and Warehouse Keeper—William Doutney. Second Clerk—James Winter. Third Clerk—William Gill. Fourth Clerk and Locker—William Reddin. Locker—John Hickey.

Authorized Broker—Joseph R. Mullings.

OUTPORT SUB-COLLECTORS.

Fogo, John G. Lucas. Greenspond, William Lang. Trinity, Robert Bayly. Carbonear, John McCarthy. Harbor Grace, Edward E. Brown; Clerk and Landing Waiter, Johnstone F. Burrows. Brigus, John C. Nuttall. Placentia, William Bradshaw. Burin, Thomas Winter. Lamaline, Henry Benning. Harbor Breton, Thomas Birkett. Gaultois, Richard Bradshaw. LaPoile, Thomas Read. Twillingate, Joseph J. Pearce.

PREVENTIVE OFFICERS.

Green Bay, (North Side,) Patrick Power. Bonavista, William Sweetland. Bay Bulls, John L. McKie. Ferryland, Luke Brown. St. Mary's, James Murphy. Trepassey, John Devereux. Grand Bank, Josiah Blackburn. Fortune, Thomas Rogers. LaManche, Richard McGrath. Little Placentia, Thomas Freeman. Channel (Port-aux-Basque,) Horatio H. Read. St. Lawrence, Hugh Vavasor. English Harbor, (Fortune Bay,) Albert Sterling. Bay Roberts, George W. Hierlihy. Pushthrough, (Fortune Bay,) Henry Camp. Bay-de-North, John Burfitt. Hants Harbor, James L. Mews.

CUSTOMS DEPARTMENT.

Comptroller—Hon. J. Bemister. Surveyor of Shipping—Edward L. Moore, St. John's.

Shipping Master and Emigrant Agent—James Finlay.

TREASURY DEPARTMENT.

Receiver General—Hon. J. Bemister. Clerk—Geo. F. Hayward.

Financial Secretary's Office.

Acting Financial Secretary—Richard Howley, Esquire.

Board of Works.

For the management and superintendence of Government House, Colonial Building, Court Houses, Gaols, Custom Houses, Hospitals, Lunatic Asylum, and all other Buildings and Property belonging to the Colony; Light Houses, Buoys, and Beacons erected or to be erected within the Colony and its dependencies; supervision of Commissioners of Roads, Highways, Bridges, &c., &c.

Chairman—John H. Warren, Esquire; John Kavanagh, Thomas S. Dwyer, Terence Hallern, Stephen Rendell, James E. Wood, and William Boyd, Esquires.

Secretary—John Stuart. Superintendent of Public Buildings—Hon. Patrick Kough. Road Surveyors and Inspectors—Thomas Byrne, John Maher, and William Coady.

OUTPORT BOARDS OF ROAD COMMISSIONERS.

Brigus to Port-de-Grave, (both places inclusive)—John Leamon, Richard Mandeville, Rev. E. O'Keefe, John Wilcox, Philip Bennett, Thomas Butler, and John Bartlett.

Port-de-Grave, (Northern side of Northern Gut Bridge)—John Wilcox, Thomas Butler, Thomas Marten, jr., — Kenny, James Keeping, Samuel Daw, jr., (Ship Cove), John Butler, (Sand).

Bay Roberts—William S. Green, Richard Cormack, Isaac Bartlett, John MacStravic, and Robert Daw.

Harbor Grace (from Spaniards' Bay Long Bridge to Barrett's Road)—Andrew Drysdale, William Donnelly, Hugh W. Trapnell, Thomas Higgins, Patrick Devereux, Robert Walsh, and James Crane.

Carbonear, (Electoral District)—William W. Bemister, John Rorke, Edward Dwyer, James Forward, and Michael Bulger.

Bay-de-Verds, (Upper Division, from Fresh Water to Northern Bay, exclusive)—Rev. John S. Peach, and Joseph H. Parsons, William Butt, James P. King, John Fitzgerald.

Bay-de-Verds, (Lower Division, from Northern Bay, inclusive, to Grates Cove)—Rev. William E. Shenstone, Rev. Bernard Duffy, Rev. Oliver Rowse, and John Lewis, Thomas Neil, John Wright, Josiah Garland.

Trinity, (North Side) to Ragged Harbor—Benjamin Sweetland, Robert Bayly, Alexander W. Bremner, Patrick Murphy.

Trinity, (South Side) from Grates Cove to Hants Harbor—James L. Mews, John Sheehan, Thomas Cooper, Jabez Tilly, William Meadows, and William March.

New Harbor—Charles Newhook, William Miller, Joseph Pretty, and Edgar March.

Hants Harbor to Head of the Bay—Robert Ollerhead, Michael Howley, James Wiseman, John Walker, and Rueben Bemister.

Ragged Harbor to Bird Island—Alexander Bremner, William Ashford, William Walsh, Robert Tilly, John Cameron, John Jeynes.

Bonavista—William Sweetland, John Lawrence, Peter Ward, James Saint, Patrick Kough, John G. Skelton, M.D.

King's Cove—Rev. Matthew Scanlan, Michael Murphy, David Candow, jr., and William Hancock, jr.

Salvage—Henry Wills, William Dyke, jr., James Pike, William Sanson, Samuel Thurman, and Thomas Oldford.

Greenspond—William Tough, Michael Curren, George Skelton, M.D., James Noonan, John T. Oakley, William Lang, and James Carter.

Keels and Tickle Cove—David Candow, and Andrew Mallowney, (Tickle Cove), John Murphy, William Penny, (Keels).

Twillingate—John Peyton, Joseph J. Pearce, Charles Edmonds, Joseph Minty, Thomas Manuel.

Pogo—Hay Findlater, M.D., Richard Power, Thomas Humphrey, John Banks, and Walter Williams.

Tilton Harbor—Rev. Patrick Ward, and William Burke, John Brien, John Dwyer, and William Greene.

Moreton's Harbor and Tizzard's Harbor—William Osmond, John Forward, (Tizzard's Harbor), Henry Knight, John Taylor, John Cantwell, (Moreton's Harbor).

Burnt Island, Exploits—William Menchenton, Edward Dowton, Thomas Butt, William Sevin, Andrew Pearce, and Josiah Manuel.

Fortune Harbor—James Hamilton, Michael Bryan, Michael Byrne, Matthias Glaveen, Patrick Carroll, William Carroll, (Indian Cove), and James Lyver, (Waldron's Cove).

Jacket's Arm to Head of the Bay—John Knight, J. Campbell, and John Rowsell.

Shoe Cove to Nipper's Harbor—James Gray, John Stark, William Noble, and John Welshman.

Leading Tickle—James Alcock, Edward Butler, and William Rowsell.

Ferryland and Fermews—Rev. James Murphy, and Richard Cashin, William Prendergast, Simon Gregory, Patrick Finn, Michael Foley, and George Jackman.

Bay Bulls to the Goulds—Martin Williams, Martin Driscoll, Thomas Mockler, Cornelius O'Brien, Doctor McKie, and Very Rev. P. Cleary.

Placentia and St. Mary's—Francis L. Bradshaw, and Rev. Edward Condon, Thomas Freeman, and Thomas Keites.

Burin—William Hooper, Edward Morris, Francis Berteau, Owen Pine, and Rev. John Cullen.

Lamaline—Clement Benning, Robert Bonnell, John Pitman, John Collins, and George Cake.

Grand Bank—Edward Evans, Jonathan Snook, George Lake, and William Burfitt.

Harbor Breton—Samuel Howe, Philip Hubert, Clement Mallet, and James Hardy.

Belloram—Rev. John Marshall, John Cluett, John Grandy, Patrick Rose, and Thomas Rose.

English Harbor—T. R. Bennett, — Hall, — Fiander, T. Evans.

From Garnish to Burin—Henry Camp, Thomas Grandy, John Parsons, Joseph Grandy, George Moulton.

Gaultois—Rev. Mr. Colley, and John Lee, Thomas Winter, H. Sheppard, and William F. Gallop.

Burgeo—Rev. John Cunningham, and William Anderson, Stephen Vatcher, Richard Bradshaw, Walter Ford.

LaPoille—Thomas Reed, Rev. George Hooper, and Phillip Clements, William Thomas and Frederick Cox.

Channel (Port-aux-Basque)—Rev. W. W. LeGallais, Rev. Thomas D. Hart, John Gillman, John Bragg, William Gillman, John G. Brock.

GAOLS.

St. John's (Penitentiary)—Keeper, Richard Brace; Turnkey, Samuel Shaw; Surgeon, Charles Crowdy, M.D.

Harbour Grace—Gaoler, David Rogers; Surgeon, William Dow, M.D.

Trinity—Gaoler, Charles Granger.

Ferryland—Gaoler, Francis Geary.

Placentia—Gaoler, Samuel Collins.

Burin—Gaoler, John Murphy.

Bonavista—Gaoler, Michael Fennell.

Twillingate and Fogo—Gaoler, James Rice.

Harbour Breton—Gaoler, John Garvey.

Brigus and Port-de-Grave—Gaoler, James Butler.

COURT HOUSES.

St. John's—Keeper, John R. Jeans.

Harbour Grace—Keeper, David Rogers.

Ferryland—Keeper, Francis Geary.

ST. JOHN'S HOSPITAL.

Medical Attendants—Hon. John Rochfort, M.D., and Thomas McKen, M.D.; Matron—Mrs. Dooley; Keeper—John Prowse.

ST. JOHN'S POOR HOUSE.

Medical Attendants—Hospital Doctors; Keeper—John Downey; Assistant Keeper—Joseph Score.

LUNATIC ASYLUM, (ST. JOHN'S.)

Resident Physician—Henry H. Stabb, M.D.

DISTRICT SURGEONS.

St. John's, (Eastern Ward)—Charles Crowdy, M.D., Charles H. Renouf, M.D. (Western Ward)—Frederick Bunting, M.D., James N. Fraser, M.D.

Conception Bay—William Dow, M.D.

COLONIAL BUILDING AND GROUNDS.

Keeper—Mrs. Born.

COMMISSIONERS FOR ERECTION OF PUBLIC WHARF.

Catalina—Alexander Bremner, William Walsh, James Murphy, John Diamond, John Jeynes.

COMMISSIONERS FOR ERECTION OF BREAKWATERS.

Fortune—George Lake, sr., Elias Major, John Lake, John Spence sr., Thomas Rogers, sr., John Forsey, sr., and Edward Bennett.

Grand Bank—Robert Forsey, William Burfitt, Henry Hickman, Wilson Lovell, Henry Nicolle, George Tibbo, George Forsey.

Light Houses.

Fort Amherst Light, at the entrance of St. John's—A Light was first established at this station in 1813; in 1850 a new House, Lantern and Apparatus were erected. The Light burns at an elevation of 114 feet, is produced by a treble argand burner placed in the focus of an annular lens of the fourth order, and in favorable weather can be seen 16 nautical miles. When Cape Spear is enveloped in fog a heavy piece of ordnance is also discharged at this Fort every hour during day light, to assist vessels in making the harbor. It is situated in lat. 47.33.54 N., and long. 52.40.18 W. John Sheppard, Keeper; Austin Sheppard, Assistant.

Cape Spear Light—This Light was first exhibited on the 1st September, 1835; it is produced by seven argand burners and silvered reflectors burning at an elevation of 264 feet—it revolves, showing a bright Light, every minute, and in favourable weather can be seen 26 nautical miles. It is situated in 47.31.11 N. lat., and 52.36.59 W. longitude. James Cantwell, Keeper; Denis Cantwell, Assistant.

Harbor Grace Island Light—First exhibited on the 21st November, 1836; it is a Fixed Light, has fifteen argand burners and reflectors, showing a steady bright Light from N. to S. W. and by W. seaward, elevated above the level of the sea 151 feet, and can be seen in fair weather in rounding Cape St. Francis or crossing Conception Bay, on the intervening space between N. and S. W. and by W. 20 nautical miles; on the land side the light is more feeble. It is situated in lat. 47.42.45 N., and long. 53.8.15 W. Austin Oke, Keeper; Charles Snow, Assistant.

Cape Bonavista Light—Situated in lat. 48.41.56 N., long. 53.5.20 W.; is a Revolving Light, showing alternately every 90 seconds a White and Red Light. It is produced by sixteen argand burners and reflectors, burns at an elevation above the sea of 150 feet, and in favourable weather can be seen 18 nautical miles. By keeping this Light open with Cape Largent, it will carry you clear of the Flower Rocks; first exhibited 11th September, 1843. Jeremiah White, Keeper; Nicholas White, Assistant.

Cape Pine Light—This Tower is of iron, built by the Imperial Government in 1849-50, and first put in requisition on the 1st January, 1851. It is revolving, and shews a brisk flash every thirty seconds—has 12 argand burners and reflectors—elevated above the level of the sea 314 feet—situated in lat. 46.37.4 N., and in long. 53.31.45 W. In a favourable state of the atmosphere it can be seen 26 nautical miles. Henry Herder, Keeper; Samuel Austin, Assistant.

Harbour Grace Beach Beacon and Light—First exhibited 11th September, 1850; stands on the Point of Beach at the entrance of Harbour Grace. It is a double Light, as a distinction from Harbour Grace Island Light, one being placed above the other, preserving that appearance for six miles; exceeding this distance up to ten miles, the two Lights appear blended into one. In sailing into Harbour Grace with a fair or leading wind, bring the Beach Beacon to bear W. or W. by S., and by keeping the Light or building a

Stephen

Phillip Cle-

ev. Tho-

an, John

Turnkey,

William

Thomas
was.

Downey;

Charles H.
D., James

Murphy,

in Spence
nett.

Pickman,

y.

little on the starboard bow it will carry you clear of the Bar, on which at low water there is not more than 8 feet of water. It is situated in lat. 47.41.28 N., and in long. 53.12.33 W.; elevation above the sea level 40 feet; in clear weather it may be seen at a distance of 11 nautical miles. George Brown, Keeper.

Green Island Light, at the Entrance of Catalina Harbour, Trinity Bay—Situated in lat. 48.30.15 N., long. 53.2.40 W. This is a Fixed White Light, burns at an elevation of 92 feet above high water, and in favorable weather will be seen from E.N.E., seaward, to S.W., 15 nautical miles. Vessels bound Northward by keeping this Light open with the North Head of Catalina until Bonavista Light opens with Cape LeJean, will give the Flowers Rocks an ample berth—or when coming from the Northward and bound for Catalina, by giving the N. Head a moderate berth, you will clear the Brandies Rocks by steering for Green Island Light. It was first exhibited in 1857. Patrick Houlahan, Keeper; William Houlahan, Assistant.

Cape Race Light—Exhibits a Fixed White Light, from sunset to sunrise. The Light will be visible to seaward from N. E. by E. round by the S.E. and S. to W. The Light is elevated 180 feet above the mean water level of the sea, and may be seen in clear weather 19 nautical miles from a ship's deck. The Tower is striped red and white vertically. It stands close to the old Beacon, which has been cut down. The Light-house is in lat. 46.39.30 N., long. 53.4.30 W., and was first exhibited in 1856. William Hally, Keeper; George Hewett, Assistant.

Dodding Head, Great Burin Island Light—This Light was put in requisition on the 3rd August, 1858, and is exhibited every night from sunset to sunrise. It is revolving, cato-dioptic, of the second order, producing a brilliant White Light every minute, with intermediate flashes at intervals of twenty seconds, burning at an elevation of 430 feet above the level of the sea, and in favorable weather can be seen 29 miles—situated in 47.0.26 North Latitude, 55.8.43 West Longitude. Martin Sparrow, Keeper; Thomas Doran, Assistant.

Offer Wadham Island Light—Was first exhibited on the 4th October, 1858, and is lighted every night from sunset to sunrise. The Light is a steady, fixed lens-light, burning on a circular Brick Tower 100 feet above the level of the sea, and can be seen in a favourable state of the atmosphere 15 nautical miles. Situated in Latitude 49.36.0 North—Longitude 53.45.6 West. Charles Prowse, Keeper; Robert Welloo, Assistant.

Baccalieu Island Light—This Light is exhibited every night from the going away of daylight in the evening to the return of daylight in the morning. The Light House is situated on the Northern end of the Island—Latitude 48.8.51 North, Longitude 52.47.50 West, —the Tower is of brick, the keeper's dwelling a square building detached from the Tower, painted white, with the roof red.

The Light is a Cato-dioptic first class Holophotal Revolving White Light, shewing a flash every twenty seconds. It is elevated 443 feet above high water, and can be seen in clear weather 30 nautical miles, and a lesser distance according to the state of the

atmosphere. When the Southern end of the Island bears N.N.E. the Light will not be visible when nearer the Island than eight miles. It was first exhibited in 1858. James Ryan, Keeper; John Ryan, Assistant.

Cape St. Mary's Light—Was put in requisition on the 20th September, 1860; it is a Revolving Cato-dioptic Light of the first order, producing alternately every minute a brilliant Red and a White Light, burning at an elevation of 300 feet above the level of the sea, and will be seen in a favourable state of the atmosphere 26 nautical miles from a vessel's deck; situated in 46.49.30 N. lat., 64.11.34 West long. The Tower is of Brick, and on each side of which stand the dwellings of the Keeper and Assistant, the sides of which are painted White, roofs Red. John Reiley, Keeper; William J. Collins, Assistant.

St. John's—Two Red Lights are exhibited every night from sunset until sunrise, intended as leading marks for vessels entering the Narrows. The lower Light on the roof of the Custom House—the other 400 yards in the rear, on a white post, within a few yards of the N.E. angle of the Congregational Church, and 180 feet above the level of the sea. These Lights will be readily distinguished from other lights in the town; and keeping them in a line bearing N.W. $\frac{1}{2}$ W. will lead in the largest vessel clear of all danger. To serve as leading marks also during the day, the pediment of the Custom House has been painted white; this is to be kept in line with the upper lantern, also painted white. Exhibited 1st September, 1863.

Galantry Head, Island of St. Peter's—The Fixed Light on Galantry Head, (Island of St. Peter's,) since the 10th August, 1862, has been replaced by a Flash Light, with intervals of twenty seconds, and by one Red Flash after two White Flashes; situated in lat. 46.45.30 N., long. 58.27.0 W. Elevation above high water 64 metres. Distance at which the Light is visible 18 miles. The Light is hidden at the Northward by the highland of St. Peter's.

Light at the South entrance St. Peter's—Since 1st October, 1862, the entrance of the Harbor of St. Peter's, called South Channel, has been marked by two small Fixed Lights, one of which is a White Light illuminating three-fourths of the horizon, and placed on the Battery—and the other a Red Light, on the plain at the North of the town. The White Light has an elevation of 11 metres, and is visible 6 miles. The Red Light is elevated 19 metres, visible 3 miles distance. The line connecting these two Lights indicates the Middle Channel.

The position of the Red Light has also been so determined that as soon as it is seen on the left of Cape Eagle, vessels coming from Columbiar in beating into the N.E. entrance will have nothing to fear from the shoals of Cape Rouge.

Robert Oke, General Inspector of Light Houses.

Light Dues—One Shilling per ton on all Vessels entering any Port or Harbor of the Colony, except Coasting, Sealing, or Fishing Vessels; but not to be levied more than once in any one year.—*Sealing and Coasting Vessels*—Sixpence per ton on registered vessels of 40 tons and upwards; Fifteen Shillings per annum on all vessels less than 40 tons.

The 19th of Victoria, Cap. 5, Sec. 5, enacts—"That no greater sum than £25 sterling shall be in any year levied for Light Dues on any Steamer or Vessel entering any port of this Colony; and no Steamer plying between Europe and any port of North America, and entering any port of this Colony as a Port of Call, shall be liable to pay any Light Dues or other port charges except Pilotage."

Post Office Department.

Post Master General—John Delaney, Esq. Chief Clerk and Accountant—James Healy. Second Clerk—John Freeman. Assorters—E. Solomon and James Furlong. Messenger—George Gaden.

Office hours, from 9 o'clock, a. m., to 4 p. m., Sundays excepted.

POST MASTERS.

Harbour Grace, Andrew Drysdale; Carbonear, Mary Casey, (Post Mistress); Brigus, Sarah Stentaford, (Post Mistress); Trinity, Anne Cross, (Post Mistress); Bonavista, John Lawrence; Greenspond, William Lang; Fogo, James Fitzgerald; Twillingate, Joseph J. Pearce; Bay Bulls, Martin Williams; Ferryland, John Morry; Trepassy, John Devereux; Placentia, Mary Morris, (Post Mistress); Burin, Thomas Birkett; Harbor Breton, — —; Burgeo, Richard Bradshaw.

WAY OFFICERS.

Port-de-Grave, Matthew O'Rielly; Bay Roberts, James Fitzgerald; Blackhead, William Butt; King's Cove, Michael Murphy; New Perlican, Francis Howel; Old Perlican, William Christian; St. Mary's, Philip Breen; Oderin, Andrew Murphy; Salmonier, Patrick Hurley; Little Placentia, Alexander Burke; Harbor Maine, Patrick Brick; LaPoile, Horatio Read; Hermitage, Thomas Winter; Catalina, J. Jeans; Garnish, — —; Bay-de-Verds, Thomas Hutchings; Lamaline, James Pitman.

POSTAL ROUTES.

Summer—Between St. John's and Portugal Cove, every day, except Sunday and Friday, by Waggon.

Between Portugal Cove, Brigus, Harbor Grace, and Carbonear, by Steamer, tri-weekly.

Overland, by Waggon, for Carbonear, via Topsail, Kelligrews, Holyrood, Harbor Maine, Brigus, Port-de-Grave, Bay Roberts, Spaniard's Bay, and Harbor Grace, Four Hours after the arrival of Halifax Steamer.

Winter—Overland Mondays and Thursdays, between St. John's and Carbonear, calling at all the intermediate places.

Between Carbonear and New Perlican, (calling at Heart's Content) weekly, by Messenger.

Between Carbonear and Bay-de-Verds, weekly, by Messenger, calling at intermediate places.

Between New Perlican and Bay-de-Verds and Grates, calling at Old Perlican, weekly, by Messenger.

Between New Perlican and Trinity, weekly, by Boat.

Between Trinity and Bonavista, weekly, by Messenger.

Between Trinity and King's Cove, weekly, by Messenger.

Between Bonavista and Greenspond, fortnightly, during summer months, touching at King's Cove or Tickle Cove.

Between St. John's, Fogo and Twillingate, leaving St. John's every second Wednesday after the arrival of the Mail Packet from Halifax, or on such other days as the Post Master General may appoint.

Between St. John's and Ferryland, weekly, by Waggon, during summer months, and fortnightly in winter.

* Between Ferryland and Trepassey, by Messenger.

* Between St. John's and Placentia, by Waggon, at 4 o'clock, a.m., on the Tuesday after the arrival of Halifax steamer.

* Between Placentia and St. John's, by Waggon, in one hour after the arrival of Packet Boat from Burin.

* Between Salmonier and St. Mary's, by Messenger.

* Between Great and Little Placentia, by Messenger.

* Between Little Placentia, LaManche, Sound Island, Harbor Buffett, Red Island, Merasheen and Burgeo, by Boat.

* Between Great Placentia and Burin, by Boat, touching at Paradise and Oderin.

* Between Burin and Garnish, by Messenger.

* Between Garnish, Grand Bank and Fortune, by Messenger.

* Between Garnish and Harbor Breton, calling at English Harbor, by Boat.

* Between Harbor Breton, Burgeo and LaPoile, by Boat.

Besides the above-mentioned routes, intermediate Mails are made up and dispatched by the Steamer *Ariel*.

Newspapers posted in this country, when addressed to any place in Nova Scotia, Canada, P. E. Island, Bermuda, the United States, or elsewhere, must in all cases be prepaid, by Mail, otherwise they cannot be forwarded, except deposited in the Government Agent's Bag as merchandise.

All Correspondence addressed to the United States, must be prepaid, or it cannot be forwarded.

Routes marked * are fortnightly during summer, and monthly during winter months.

INLAND POSTAGE.

For Letters—Under $\frac{1}{2}$ oz.....	0	3d
Under 1 oz.....	0	6
3d for every additional $\frac{1}{2}$ ounce		

For Books—Packet not exceeding 4 oz.....	0	2d
Above 4 oz., not exceeding 8 oz.....	0	4
Above 8 oz., not exceeding 1 lb.....	0	8
Above 1 lb., not exceeding 1½ lb....	1	0
Above 1½ lb., not exceeding 2 lb.....	1	4

Postage Stamps may be had at the General Post Office every day during Office hours.

Table of Single Rates of Postage on Letters, posted in Newfoundland for the undermentioned Countries.

Africa, 1s 5d. Australia, 11d. Bermuda, West Indies, and Cape Breton, 4d, and 3d cy. additional when posted at the Outports.—Canada, 10d. China, 1s 5d. Denmark, 1s 2d. France, 8d. Hamburg, 11d. Halifax, N.S., 4d, and 3d cy. additional from the Outports. India, 11d. New Brunswick, 6½d. Norway, 1s 7d. P. E. Island, 4d, and 3d cy. additional from the Outports. Prussia, 11d. Sweden, 1s 5d. United Kingdom, 6d. United States, 4d, and 3d cy. in addition from the Outports. Rome, 1s 2d.; and Spain, Sardinia, and Italy, (except Papal States) 11d. per ¼ oz.

The Mails by the Packets of the Atlantic Royal Mail Company will be closed on the Ships being signalled. Should the Ships not arrive at 4 p.m. on the days on which they are due, the Mails will be closed at that hour; and in the event of their not arriving before eight o'clock the following morning, a Supplementary Mail will be made up to close on their being signalled, up to 4 o'clock, p.m.

All Correspondence that may be in the Office at the time of closing the Mails by these ships, will be forwarded by them, unless directed otherwise.

Closed Mails for the United Kingdom, via New York, will be made up to meet the British Packet from New York for Liverpool.

Letters must be addressed via New York. Postage on Letters, 6d stg. per ¼ oz.; on Newspapers, 2d stg. each.

On Sundays the Office will not be open for receiving Letters at the window, but Letters dropped into the box up to the time of dispatching the Mail by the above ships will be given in charge, in a bag, to the Mail Officer.

N.B.—The Mail Steamer from Halifax is due here on the same days as the Steamships of the Atlantic Company. Return Mails closed in 48 hours after receipt of Mail Bags from Steamer.

Savings' Bank.

Governors—Three members of the Legislative Council, and five members of the House of Assembly, viz. :—Hon. Nicholas Stabb, Hon. Robert Kent, and Hon. James S. Clift, of the Council; and the Hon. the Speaker, Dr. Winter, Hon. Robert Carter, R.N., Ambrose Shea, and John Leamon, Esquires, of the House of Assembly.

Directors—Hon. N. Stabb, Hon. the Speaker, and Dr. Winter.

Cashier—Hon. Edward Morris.

The Bank is open every Monday between the Hours of 12 and 2 o'clock, for Depositors' business; and on Wednesdays for Discount business, from 11 to 2 o'clock.

BRANCH BANK, HARBOR GRACE.

Cashier and Clerk—Joseph Peters.

Poor Commissioners.

Joseph Shea, Esq., M.D., (Stipendiary,) Hon. Robert Carter, and Hon. John Bemister.

Commissioners for Reduction of Public Debt.

John Kent, Esq., Hon. Laurence O'Brien, and the Receiver General.

Commissioners of Pilots.

Chairman—John B. Bulley, Esq.; Hon. Laurence O'Brien, Hon. Nicholas Stabb, Robert Grieve, Ambrose Shea.

Table of Rates of Pilotage of Vessels in and out of the Harbor of St. John's.

	Currency.
On Vessels under Eighty Tons New Measurement	£2 0 0
On Vessels from Eighty Tons to One Hundred Tons New Measurement	2 10 0
On Vessels from One Hundred Tons to One Hundred and Twenty Tons New Measurement	2 15 0
On Vessels from One Hundred and Twenty Tons to One Hundred and Sixty Tons New Measurement	3 0 0
On Vessels from One Hundred and Sixty Tons to Two Hundred Tons New Measurement	3 5 0
On Vessels from Two Hundred Tons to Two Hundred and Forty Tons New Measurement	3 10 0
On Vessels from Two Hundred and Forty Tons to Two Hundred and Eighty Tons New Measurement	3 15 0
On Vessels from Two Hundred and Eighty Tons to Three Hundred Tons New Measurement	4 0 0
On Vessels from Three Hundred Tons to Three Hundred and Fifty Tons New Measurement	5 0 0
On Vessels from Three Hundred and Fifty Tons to Four Hundred Tons New Measurement	6 0 0
On Vessels from Four Hundred Tons to Five Hundred Tons New Measurement	7 0 0
On Vessels from Five Hundred Tons to Six Hundred Tons New Measurement	8 0 0
On Vessels from Six Hundred Tons to Seven Hundred Tons New Measurement	9 0 0

On Vessels from Seven Hundred Tons to Eight Hundred	10 0 0
Hundred Tons New Measurement	10 0 0
Over that size—for every One Hundred Tons additional	0 10 0
And on no one Vessel is the Pilotage to exceed	12 0 0

All Coasting Vessels which may take Pilots to pay one half of the above Rates of Pilotage, in proportion to their tonnage.

The above Scale of Pilotage shall be payable on the Register Tonnage of all such Vessels, as ascertained before going out of the Harbor.

Her Majesty's Ships under Sixth-Rate	£3 10 0
Do. do. of Fourth, Fifth, and Sixth-Rate	6 10 0
Do. do. of First, Second, and Third-Rate	8 10 0

All Merchant or Mail Steamers to pay 6d. for Each Horse Power, and on no one Ship to exceed Twelve Pounds, currency, to be ascertained either by Ship's Register, or if necessary, by Captain's Affidavit.

Commissioners of Wrecked Property.

Placentia and St. Mary's—George Simms, jr. Ferryland—Martin Williams. Burin—Thomas Birkett.

Board of Health.

Health Officers—Joseph Shea, M. D., St. John's. William Dow, M. D., Harbor Grace. Richard Berny, M.D., Carbonear. Francis Moran, M. D., Burin.

Medical Officer, Port of St. John's.

William C. Simms, M. D.

Judicial Department.

Supreme Court—Chief Justice—Sir Francis Brady, Knight. Assistant Judges—Honourables Philip Francis Little and Bryan Robinson. Attorney General—Honorable Hugh W. Hoyles. Solicitor General—John Hayward, Esquire. Queen's Counsel—Hon. Hugh W. Hoyles, Hon. George H. Emerson, Frederick B. T. Carter, and John Hayward. Chief Clerk and Registrar Supreme and Central Circuit Courts—Matthew W. Walbank. Chief Clerk and Registrar Northern Circuit Court—Lewis W. Emerson. Chief Clerk and Registrar Southern Circuit Court—George Simms. Crier of the Supreme Court and Tipstaff—William Howlin.

Barristers and Attornies of the Supreme Court at St. John's, according to seniority, exclusive of the Attorney and Solicitor Generals and Queen's Counsel.—Charles Simms, John S. Stevens, Robert R. W. Lilly, George J. Hogsett, John Little, Thomas J. Kough, Matthew W. Walbank, William V. Whiteway, Hon. Robert J. Pinsent, Archibald Emerson, Charles H. Simms, Augustus O. Hayward,

Daniel W. Prowse, Joseph J. Little, William L. O'Donnell, Michael Joseph O'Mara.

Attornies at Law.—Robert R. Holden, Edmund M. Hanrahan, Prescott Emerson.

Students admitted Members of the Law Society.—Robert Joseph Kent, William O. Wood, James M. Winter.

Barristers and Attornies, Harbor Grace.—John Hayward, Richard Anderson, Henry C. Watts, Henry A. Clift.

Law Society Benchers.—Frederick B. T. Carter, Treasurer; Hon. Attorney General, Solicitor General, John Little, William V. Whiteway, Matthew W. Walbank. Secretary and Treasurer—W. V. Whiteway.

Sheriffs.—Central District—John V. Nugent. Northern District—Garland C. Gaden. Southern District—John Stephenson.

Masters-in-Chancery.—Hon. George H. Emerson, Charles Simms, Thomas J. Kough, Hon. Robert J. Pinsent, William V. Whiteway, M. W. Walbank.

Vice-Admiralty Court.—Judge—The Chief Justice for the time being. Registrar—Peter W. Carter. Marshal—James Bayly. Surrogates—D. W. Prowse and Henry T. Wood.

TERMS OF COURTS.

Supreme Court.—Spring Term commences 20th May, to continue three weeks. Autumn Term, 20th November, and to continue three weeks, with power to the Judges to prolong the Term from day to day, not exceeding six days in all.

Sessions after Term.—The first Monday in February, March, April, and July, and to continue for a period not exceeding six days.

Central Circuit Court.—Spring Term, 20th April, and to continue three weeks. Autumn Term, 20th October, and to continue three weeks, with power to the presiding Judge to prolong the Term from day to day, not exceeding six days in all.

Sessions after Term.—The second Monday in February, March, and July, and to continue for a period not exceeding six days.

Commissioners for Issuing Mesne and Final Process and Subpœnas returnable into the Supreme and Circuit Courts, for taking Affidavits, and Recognizance of Bail in any Suit depending in said Courts.

Central District.—Matthew W. Walbank and Henry T. Wood St. John's.

Northern District.—John Fitzgerald, Harbor Grace. John C. Nuttall, Brigus. John Wilcox, Port-de-Grave. James L. Mews, Hant's Harbor. William Christian, Old Perlican. Michael Howley, New Perlican. Benjamin Sweetland, Robert Bayly, Trinity. John Lawrence, Bonavista. George Skelton, Greenspond. James Fitzgerald, Fogo.

Southern District.—Luke Brown, Ferryland. Francis L. Bradshaw, Placentia. Thomas E. Collett, Harbor Buffett. Edward L. Morris, Burin. Clement Benning, Lamaline. Josiah Blackburn, Grand Bank. Richard Bradshaw, Burgeo. Thomas Reade, La-Polle.

Commissioners for taking Affidavits and Recognizance of Bail in any Suit depending in the said Courts.

Northern District—Lewis W. Emerson, Harbor Grace. Israel McNeil, Carbonear. John Lewis, Lower Island Cove. George W. R. Hierlihy, Bay Roberts. William Holden, Harbor Maine. George Garland, Port-de-Grave. Charles Newhook, New Harbor. Thomas Hutchings, Bay-de-Verd. John Murphy, Chapel's Cove. William Turner, Job's Cove. Alexander Bremner, Catalina. William Sweetland, Bonavista. Michael Murphy, King's Cove.

Southern District—John L. McKie, Bay Bulls. Peter Winsor, Aquafort. George Simms, Trepassay. Thomas Birkett, Burin. John Allery, St. George's Bay.

STIPENDIARY MAGISTRATES.

St. John's—Peter W. Carter, and Thomas Bennett.

Conception Bay—Joseph Peters, Harbor Grace. Israel McNeil, Carbonear.

Trinity Bay—Benjamin Sweetland, Trinity. James L. Mews, Old Perlican.

Bonavista—William Sweetland.

Twillingate—John Peyton.

Ferryland—John L. McKie, Bay Bulls. Edmund Hanrahan, Ferryland.

Placentia and St. Mary's—Francis L. Bradshaw, Placentia. James Murphy, St. Mary's.

Burin—William Hooper, Burin. Josiah Blackburn, Grand Bank. Clement Benning, Lamaline.

Fortune Bay—Thomas Birkett, Harbor Breton.

JUSTICES OF THE PEACE.

For the Island of Newfoundland—The Judges of the Supreme Court, the Members of the Executive Council, and Peter W. Carter, Thomas Bennett, Charles Fox Bennett, John Kent, Ambrose Shea, Thomas Glen, Edmund Hanrahan, Edward D. Shea, Charles Simms, James J. Rogerson.

Central District—Stephen Rendell, John Winter, James Cormack, John O'Mara, Patrick Strapp, Joseph Peters.

Northern District—Patrick Strapp, Benjamin Sweetland, John Peyton, William Sweetland, Joseph Ryan, William Kelson, John Thorn Oakley, John Tilly, James L. Mews, Robert Ollerhead, Alexander Bremner, John G. Skelton, Thomas Hutchings, John Munn, William H. Ridley, Joseph Shears, David Candow, William Seager Green, William Donnelly, William W. Bemister, John Rorke, James Luke Prendergast, John Wilcox, James Keeping, Charles Newhook, John Leamon, Philip Levesconte, James Fitzgerald, Joseph Peters, Lewis W. Emerson, Richard Mandeville, Richard Berny, M.D., Israel McNeil, John Lewis, Reuben Bemister, George Skelton, John McCarthy, Michael Howley, Michael Murphy, James Sain. Peter Ward, James Alcock, William Sterling, Joseph J. Pearce, Charles

Edmonds, Nathan Norman, William Lang, William Holden, Richard Cormack, Hay Findlater, John Sheehan, William P. Taylor, Gilbert H. Cole, John W. Owen, George W. R. Hieribby, James N. Leamon, Edward T. Pike, and James N. Noonan.

Southern District—John L. McKie, Francis Lodge Bradshaw, William Hooper, Thomas Eppes Gaden, Josiah Blackburn, George Simms, Peter Winsor, Clement Benning, James Murphy, Thomas Reed, Thomas Renouf, Edward Evans, Thomas E. Collett, Francis Berteau, Robert H. Dawe, John Walsh, John O'Neill, Owen Pine, Richard Marshall, Luke Brown, Clement Mallett, Samuel Howe, William F. Gallop, Patrick Furlong, Thomas Winter, Philip Sorsoleil, Martin Williams, John W. English, and Thomas Birkett.

CLERKS OF THE PEACE.

St. John's, (for Central District)—Robert R. W. Lilly. Harbour Grace—John Fennell. Carbonear—John Mackay. Brigus—John C. Nuttall. Trinity—Robert Bayly. Bonavista—John Lawrence. Twillingate—Aaron A. Pearce. Burin—Edward Morris. Harbour Breton—Samuel Howe.

CORONERS.

St. John's—Joseph Shea, M.D. Harbour Grace—Joseph Peters. Trinity—Benjamin Sweetland. Greenspond—Dr. Skelton. Ferryland—John Stephenson. Bay Bulls—Martin Williams. Trinity Bay (South Side)—Michael Howley. Bonavista—John Lawrence. Harbor Maine—Patrick Strapp. Hermitage Bay—Thomas Winter.

POLICE.

General Superintendent of Police Constabulary for Newfoundland—Timothy Mitchell. St. John's—Sergeants, William Ferguson and James Kenna.

Harbour Grace—High Constable, Luke Fallon.

Carbonear—High Constable, Peter McBay.

Assayer of Weights and Measures—Timothy Mitchell, St. John's.

Educational Institutions.

ST. JOHN'S ACADEMY.

Directors—Church of England Board—Right Rev. Dr. Feild, Thomas Bennett, Hon. Robert Carter, Hon. Hugh W. Hoyles, Hon. Judge Robinson. Masters—Rev. George P. Harris, M.A.; Rev. Charles F. Jagg.

Roman Catholic Board—Right Rev. Dr. Mullock, John Kent, Hon. John Rochfort, M.D., Hon. Laurence O'Brien, Hon. Judge Little. Masters—Rev. M. Walsh, Rev. R. O'Donnell, T. Talbot, M. Fenlon, P. Comerford, E. Bennett.

General Protestant Board—Walter Grieve, John McGregor, John B. Bulley, James O. Fraser, Hon. Peter G. Tessier, William Boyd. Master—Adam Scott.

NEWFOUNDLAND WESLEYAN ACADEMY.

Directors—Rev. John S. Peach, James J. Rogerson, Hon. Nicholas Stabb, Hon. John Bemister, Joseph Woods. Head Master—Alexander Simpson Reid, M.A. Assistant Teacher—Junia D. Sprague.

GRAMMAR SCHOOLS.

Directors—Harbour Grace—John Munn, Thomas H. Ridley, William Donnelly, John Hayward, Hugh W. Trapnell, John Ryan, D. Greene. Master—John I. Roddick.

Carbonear—Joseph Ryan, William W. Bemister, Richard Berny, John McCarthy, Edward F. Pike, Michael Bulger, Moses Wiltshire. Master—Alexander O'Donovan, B.A.

COMMERCIAL SCHOOLS.

Commissioners—Brigus—James N. Leamon, John C. Nuttall, Richard Mandeville, Thomas Kelly. Teacher—William Greene.

Broad Cove (Bay-de-Vords)—Rev. J. S. Peach, Rev. W. E. Shentstone, John Lewis, William Butt, jr. Teacher—Alexander M'Kay.

Trinity—G. P. Lockyer, A. W. Bremner, Edward Egan. Teacher

Old Perlican—Rev. John Waterhouse, Jabez Tilly, and Stephen K. March. Teacher—William Christian.

Bonavista—William Sweetland, Peter Ward, James Saint, John Lawrence. Teacher—Samuel Rowsell.

King's Cove—Rev. M. Scanlan, Michael Murphy. Teacher—

Ferryland—Rev. James Murphy, Robert Carter, Luke Brown, Michael Devereux. Teacher—Patrick Flannery.

Burin—Episcopal Branch, ———, Teacher; Roman Catholic, Michael O'Donnell, Teacher; Wesleyan, Jonathan Parsons, Teacher.

Harbor Breton—Rev. W. K. White, Rev. Edward Colley, Clement Mallett, Samuel Howé. Teacher—

Twillingate—Rev. Thomas Boone, Rev. James A. Duke and Edwin Duder, John W. Owens, John Roberts.

COLONIAL AND CONTINENTAL CHURCH SOCIETY.

Patron—Her Most Gracious Majesty the Queen. Vice-Patrons—His Grace the Archbishop of Canterbury. President—The Most Hon. the Marquis of Cholmondeley, and 80 Vice-Presidents, consisting of Peers of the United Kingdom, English and Colonial Bishops, Colonial Governors, Members of Parliament, &c., &c.

Corresponding Committee in Newfoundland— ———, President; Hon. H. W. Hoyles, Vice-President; Dr. Winter, Treasurer; James Bayly, Secretary; Edward L. Jarvis, Rev. T. M. Wood, F. B. T. Carter. J. W. Marriott, Inspector. Bankers, Union Bank.

Teachers—St. John's—Mr. Marriott and Mr. Bishop; Girls' School—Mrs. Burke; Infants' School—Miss Anderson. Petty Harbor—Mr. and Mrs. Bishop. Portugal Cove—Mr. Ward. Brigus

—Mr. and Mrs. Mills. Port-de-Grave—Mr. and Mrs. Maddock and Miss Collier. Harbour Grace—Mr. and Mrs. Gardner. Spaniard's Bay—Mr. and Mrs. Earle. Bishop's Cove—Mr. S. Earle. Heart's Content—Mr. Thompson. Trinity—Mr. Collis and Miss Lockyer. Bonavista—Mr. and Mrs. Lawrence. Salvage—Mr. and Mrs. Killigrews. Greenspond—Mr. Edwards. Swain's Island—Mr. Bishop. Twillingate—Mr. Crosby. Belloram—Rev. J. and Mrs. Marshall. Fogo—Mrs. Plomer.

WESLEYAN METHODIST SCHOOL AND AGENCY SOCIETY.

Committee—Rev. J. S. Peach, Chairman and Treasurer; Rev. J. Dove, Secretary; the Ministers of the Newfoundland District, and John Munn, James J. Rogerson, John Bulley, sr., Joseph Woods, Israel McNeil, James N. Leamon.

Teachers—Pouch Cove, Joseph Baggs. Carbonear, Robert Penny. Cupida, Francis Skanes. Port-de-Grave, — Brown. Broad Cove, John McKay. Old Perlican, William Christian. Catalina, Miss Snelgrove. Flat Islands, William Harding. Sound Island, Charles Downs.

PRESBYTERIAN (ST. ANDREW'S) SCHOOL, ST. JOHN'S.

Committee—George G. Geddes, Gilbert Browning, John B. McLea, John Boyd. Teacher—Robert Stott, M.A.

BOARDS UNDER EDUCATION ACT.

St. John's—The Senior Clergyman of the Church of England; Rev. P. Prestwood, or the Senior Wesleyan Minister; Rev. Charles Pedley, Rev. Moses Harvey, Rev. George M. Johnson, Hon. Nicholas Stabb, William H. Mare, Hon. James S. Clift, John Winter, M.D., and W. V. Whiteway.

Harbor Grace—Rev. Bertram Jones, Rev. James Dove, and Richard Anderson, John Munn, William H. Ridley, John Hayward, and Rev. William Meek, (Island Cove.)

Carbonear—Rev. John Winterbotham. Rev. William J. Hoyles, and William W. Bemister, John Rorke, Edward Fike, James Forward, jr., and Israel McNeil.

Bay Roberts—Rev. Martin Blackmore, William S. Green, Rev. James C. Harvey, Rev. Joseph Pascoe, and Thomas Marten, jr., John Wilcox, and Isaac Bartlett.

Brigus—Rev. Thomas Harris, Rev. William Shannon, and John Leamon, William S. Mills, Christopher Norman, James Wilcox, and Jonathan Percy.

Bay-de-Verds—Rev. John S. Peach, Rev. Oliver Rouse, Rev. W. E. Shenstone, and John Lewis.

Trinity Bay North—Rev. Benjamin Smith, Rev. Joseph Gaetz, and William Kelsch, Benjamin Sweetland, Robert Bayly, Alexander Bremner, jr., and Gilbert H. Cole.

Trinity Bay West—Rev. George Gardner, and Robert Ollerhead, James Moore, Robert Rockwood, Heart's Content; Charles Newhook, New Harbor; Jamca Wiseman, Heart's Delight; Rueben Bamister, New Perlican.

Trinity Bay South—Rev. John Waterhouse, Rev. Joseph Sutcliffe, Rev. O. Rouse, and James Mews, Jabez Tilly, and Dr. Joseph Coultis.

Trinity Bay East—Rev. Jabez Rogers, Rev. William Netten, and Alexander Bremner, William Norman, John Daymond, and Robert Tilly, jr., Benjamin Snelgrove.

Bonavista Bay North—Rev. William J. Milner, and John T. Oakley, George Skelton, M.D., James Noonan, Darlus Blandford, Charles Edwards.

Bonavista Bay South—Rev. A. E. C. Bayly, Rev. C. Comben, and William Sweetland, James Saint, John G. Skelton, William Brown, and Stephen Abbott.

Bonavista Bay West—Rev. William Kirby, David Candow, Tickle Cove, John Shears, Open Hall, and Samuel Coffin, William Hancock, jr., and David Candow, jr.

Fogo—Rev. Reginald M. Johnson, Rev. Thomas Fox, and Hay Findlater, Peter Carter, Charles Willis, Henry Simons, — Williams, (Bar'd Island Harbor.)

Twillingate—Rev. Thomas Boone, Rev. James A. Duke, and John Peyton, Charles Edmonds, Charles Duder, and Rev. Josiah Darrell, Herring Neck.

Moreton's Harbor—Rev. G. S. Chamberlain, Rev. Alfred W. Turner, and Robert Small, Josiah Manuel, Exploits, Job Stuckless, and William Barnes.

Ferryland—Rev. Robert Temple, Robert Carter, James H. Carter, James Carter, John Morry, Peter Winser, Daniel H. Winser.

Placentia—Rev. John Kingwell, James Butler, Thomas E. Collett, George H. Bennett, Thomas Collins, (Oderin), James Hollett, and James Chalmers.

Burin—Rev. S. T. Teed, Rev. William Rozier, Francis Berteau, Owen Pine, Richard Willie, George Goddard, and William Paul.

Lamaline—Rev. A. E. Gabriel, George H. Evans, George Cake, James Pitman, George Bust, and Thomas Laskey.

Grank Bank—Rev. John S. Phinney, Edward Evans, Josiah Blackburn, James Hickman, and Jonathan Snook.

Fortune Bay—Rev. William K. White, Rev. E. Colley, Rev. John Marshall, Samuel Howe, Arthur Drever, Clement Mallett, and W. J. Gallop.

Burgeo—Rev. John Cunningham, Rev. Edward Colley, George Hunt, M.D., William Scott, Stephen Vatcher.

LaPoile—Rev. George Hooper, Rev. John M. Pike, Thomas Reid, William Thomas, Thomas Anderson, and Philip Sorsoleil.

Channel—Rev. W. W. LeGallais, Rev. Thomas D. Hart, John Gillam, John Pike, William Gillam, John LeBrock, and Edward Genge.

Protestant Inspector of Schools—John Hadley.

ROMAN CATHOLIC SCHOOLS.

St. John's—Orphan Asylum, (Boys). Teachers—Thomas McGrath, Francis Grace; Industrial Department, Bartholomew Connors.

St. Patrick's, River Head—Teacher—John Dalton.

Harbor Grace—St. Patrick's Free School, (Boys). Teacher—Hamilton.

BOARDS UNDER EDUCATION ACT.

St. John's—The Right Rev. John T. Mullock, D.D.; John Kent, Honourable Laurence O'Brien, and Richard Howley.

Harbor Grace, Carbonear, Bay-de-Verde, and Trinity South and West—The Right Rev. Dr. Dalton, Joseph Ryan, John McCarthy, William Donnelly, Patrick Devereux, James L. Prendergast, and Michael Bolger.

Brigus—Rev. E. O'Keefe, Richard Mandeville, and James Cormack.

Harbor Maine—Very Rev. Kyran Walsh, V.G., and Patrick Strapp, William Holden, Richard Woodford, Charles Furey, and William Woodford.

Trinity Bay North—The Right Rev. Dr. Dalton, Rev. J. Scanlan, and John Murphy, P. Murphy.

Bonavista Bay South—The Right Rev. Dr. Dalton, Rev. M. Scanlan, and William Hartery, James Connors, Michael Murphy, John Ryan, and John Murphy.

Fogo—The Right Rev. Dr. Dalton, Rev. P. Ward, and John Brine, John Burke, Patrick Dwyer, and J. Fitzgerald.

Ferryland—Rev. James Murphy, Rev. William Forristal, and Henry O'Neil, Philip Jackman, Nicholas Power, Richard Cashin, Gerald Jackman.

Bay Bulls—Rev. P. Cleary, and Martin Williams, Martin Driscoll, Michael Driscoll, J. Blackler, Michael Carey, (Witless Bay) and Thomas Gatherall, (Balline).

Great Placentia—Rev. E. Condon, F. L. Bradshaw, Maurice Power, Thomas Riellev, Michael Sinnott, and John Sinnott.

Little Placentia—Rev. Pelagius Nowlan, and Thomas Freeman, Alexander Burke, John Rielley, and Thomas Keita.

Placentia West—The Rev. James Walsh, and Thomas Sullivan, Timothy Connors, Daniel Ryan, and Denis Ryan.

St. Mary's—The Rev. J. Ryan, and J. Walsh, John Grace, William Burke, Michael Fagan, James Murphy, and John Whelan.

Trepassey—The Rev. John Ryan, and James Waddleton, John Tobin, James Devereux, John Neill, jr., and John Hewett.

Burin—The Rev. John Cullen, Patrick Morris, Richard Marshall, John Power, Matthew Marshall, Edward Morris, and William Fitzpatrick.

Fortune Bay—The Rev. E. Brennan, Rev. John Cullen, and P. Burke, W. Burke, P. Burke, jr., T. Kinshella, and T. Hearne.

Roman Catholic Inspector of Schools—Michael J. Kelly.

Ecclesiastical Department.

CHURCH OF ENGLAND.

The Right Rev. EDWARD FEILD, D.D., Lord Bishop of Newfoundland. (vacant.) Archdeacon and Ecclesiastical Commissary.

Deanery of Avalon—Rev. Robert Temple, Ferryland. Rev. George M. Johnson, Petty Harbor. Rev. Benjamin Fleet, Fox Trap. Rev. C. Palsiret, M.A., Topsail. Rev. Joseph F. Phelps, Portugal Cove. Rev. George D. Nicholas, M.A., Quidi Vidi. Rev. John Pearson, St. Mary's. Rev. Thomas M. Wood, (Rural Dean) St. Thomas's.

Deanery of Conception Bay—Rev. M. Blackmore, (Rural Dean) Bay Roberts. Rev. James C. Harvey, Port-de-Grave. Rev. W. J. Hoyles, Carbonear. Rev. Bertram Jones, Harbor Grace. Rev. Oliver Rouse, Bay-de-Verd. Rev. R. H. Taylor, Brigua. Rev. William F. Meek, Island Cove.

Deanery of Trinity Bay—Rev. George Gardner, Heart's Content. Rev. T. Dohie, New Harbor. Rev. W. Kirby, King's Cove. Rev. W. J. Milner, Greenspond. Rev. William Netten, Catalina. Rev. A. F. C. Bayly, Bonavista. Rev. Benjamin Smith, (Rural Dean) Trinity. Rev. Charles R. West, Salvage. Rev. John G. Cragg, Finchard's Island.

Deanery of Notre Dame Bay—Rev. Thomas Boone, (Rural Dean) Twillingate. Rev. Josiah Darrall, Herring Neck. Rev. R. M. Johnson, Fogo. Rev. George S. Chamberlain, Morston's Harbor.

Deanery of Placentia Bay—Rev. William Rozier, Burin. Rev. J. Kingwell, Harbor Buffett. Rev. A. E. Gabriel, Lamaline.

Deanery of Fortune Bay—Rev. George H. Hooper, LaPoile. Rev. Henry Lind, St. George's Bay. Rev. Edward Colley, Hermitage Bay. Rev. John Cunningham, Burgeo. Rev. W. W. LeGallais, Channel. Rev. John Marshall, Belleoram. Rev. William K. White, (Rural Dean) Harbor Breton.

Labrador—Rev. E. Botwood, Forteau. Rev. George Hutchinson, B. A., Battle Harbor.

Theological Institution—Principal— — — —, Vice-Principal— Rev. George D. Nicholas, M.A. Students—John Noel, Ulric Rule, W. Shears, W. Oakley, Epiphanius Wilson, Theophilus Netten.

Newfoundland Church Society—Patron—His Excellency the Governor. President—The Right Rev. the Lord Bishop of Newfoundland. Vice-Presidents—The Rural Deans. Treasurer—William H. Mare. Secretary—Rev. John Pearson. Committee—John Tunbridge, F. B. T. Carter, J. C. Withers, C. Crowdy, M. D., Hon. H. W. Hoyles, J. B. Wood, K. McLea, jr., John Winter, M. D., John H. Warren, Henry K. Dickinson, T. Bennett, J. P., George J. Hayward, Hon. Judge Robinson.

ROMAN CATHOLIC CHURCH.

Diocese of St. John's—Right Rev. JOHN THOMAS MULLOCK, D.D.,
Lord Bishop of St. John's.

Very Rev. P. Cleary, Dean.

Very Rev. K. Walsh, Vicar-General.

Very Rev. A. Belanger, Vicar-General.

St. John's Cathedral—Right Rev. J. T. Mullock, D.D., Rev. Jeremiah O'Donnell, Rev. John Vereker, Rev. Thomas Byrne.

St. Patrick's, River Head—Rev. W. Walsh, Rev. J. Conway.

St. John's College—Rev. Michael Walsh, Rev. Richard O'Donnell.

Portugal Cove—Rev. Thomas O'Connor.

Torbay—Rev. Edward Troy.

Harbor Maine—Very Rev. Kyran Walsh, V.G., Rev. P. O'Donnell.

Witless Bay—Very Rev. Dean Cleary, Rev. D. O'Brien.

Ferryland—Rev. James Murphy.

Fermeuse—Rev. William Forristall.

St. Mary's—Rev. John Ryan.

Trepassey—Rev. T. Hannebury.

Placentia—Rev. E. Condon.

Little Placentia—Rev. Pelagius Nowlan.

Oliver's Cove, St. Kyran's—Rev. James Walsh.

Burin—Rev. John Cullen, Rev. M. Berny.

Harbor Breton—Rev. E. Brennan.

St. Lawrence—Rev. Richard Dunphy.

Brigus—Rev. E. O'Keefe, Rev. John Scott.

St. George's Bay—Very Rev. Alexander Belanger, V.G.

French Shore—Served annually by Priests from France.

College of St. Bonaventure, St. John's—Rev. M. Walsh, Principal and Professor. Rev. Richard O'Donnell, Director; Thomas Talbot, Professor of Classics and Belle Letters; M. Fenlon, Professor of Science; P. Comerford, E. Bennett, Professors of Spanish, Music, and Design.

Convents in the Diocese of St. John's, 12—St. John's, 4; Brigus, 1; Harbor Maine, 1; St. Mary's, 1; Witless Bay, 1; Ferryland, 1; Fermeuse, 1; Burin, 1; Placentia 1, (building.)

St. Michael's Female Orphanage, Belvedere—Nuns, 6; Orphans, between 60 and 70.

St. Clare's Boarding School, under care of Sisters of Mercy Convent.

Diocese of Harbor Grace—The Right Rev. JOHN DALTON, D.D.
Lord Bishop of Harbor Grace; Rev. J. Walsh.

Carbonear—Rev. John O'Connor.

Northern Bay—Very Rev. Bernard Buffey, V. G.

King's Cove—Rev. Matthew Scanlan.

Bonavista—Rev. J. Brown.
 Tilton Harbor—Rev. Patrick Ward.
 Bay-de-Verds—(Vacant.)
 Presentation Convents in the Diocese of Harbor Grace, two; one
 at Harbor Grace and one at Carbonear.

CONGREGATIONAL CHURCH.

The Rev. CHARLES PEDLEY, Queen's Road Chapel, St. John's.

WESLEYAN METHODIST CHURCH.

The Rev. JOHN S. PEACH, Chairman of the District. The Rev.
 James Dove, Financial Secretary.

St. John's—Rev. Paul Prestwood, Rev. Charles Ladner; Rev.
 Adam Nightingale, Supernumerary.

Harbor Grace—Rev. James Dove.

Carbonear—Rev. John Winterbotham, Rev. John Goodison.

Brigus—Rev. Thomas Harris.

Port-de-Grave—Rev. Joseph Pascoe.

Blackhead—Rev. John S. Peach.

Island Cove—William E. Shenstone.

Old Perlican—Rev. John Waterhouse.

Hant's Harbor—Rev. Joseph Sutcliffe.

Trinity—Rev. Joseph Gaetz.

Bonavista—Rev. Charles Comben, Rev. Jabez Rogers.

Twillingate—Rev. James A. Duke.

Burin—Rev. S. T. Teed.

Grand Bank—Rev. John S. Phinney.

Missions of Conference.

Labrador—Supplied during Summer by the Rev. John Goodison.

Petites—Rev. John M. Pike.

Channel—Rev. Thomas D. Hart.

Exploits, Burnt Island—Rev. Alfred W. Turner.

Fogo and Change Island—Rev. Thomas Fox.

Greenspond—Rev. John S. Allen.

CHURCH OF SCOTLAND.

The Rev. DONALD McRAE, St. Andrew's Church, St. John's.

FREE PRESBYTERIAN CHURCH.

The Rev. MOSES HARVEY, St. John's.

The Rev. Alexander Ross, Harbor Grace.

BAPTIST CHURCH.

The Rev. ———.

LAYMEN LICENSED TO CELEBRATE MARRIAGE.

Charles Harris, Gooseberry Island. George Goodridge, Labrador.

St. John's and Newfoundland Auxiliary Bible Society.

His Excellency the Governor, Patron. Hon. Nicholas Stabb, President. Hon. Hugh W. Hoyles, Stephen Rendell, William Boyd, James N. Fraser, M.D., James Pitts, Vice-Presidents. Robert Brown, Treasurer. Rev. Moses Harvey and John B. Bulley, Secretaries. Committee—Rev. P. Prestwood, Rev. Charles Pedley, Rev. Donald McRae, Rev. C. Ladner, N. Mudge, Dr. Winter, J. O. Fraser, J. Murray, J. Seaton, A. Whiteford, James Bayly, Joseph Woods, Hon. Peter G. Tessier, E. L. Jarvis, Richard Neyle, John Woods, Hon. J. Bemister, Thomas R. Job, David Watson, John B. McLea, G. Browning, Richard Brace, J. Baird, R. Grieve, and all Clergymen being members of the Society. Thomas McConnan, Depository.

Religious Tract and Book Society.

Hon. P. G. Tessier, President; Gustav Ehlers, Vice-President.—Robert Brown, Treasurer. J. W. Marriott, Secretary. Committee—Rev. Moses Harvey, Rev. Charles Pedley, Rev. Donald McRae, Rev. P. Prestwood, Hon. Hugh W. Hoyles, John B. Bulley, Stephen Rendell, J. Seaton, William Boyd, J. Bayly, Hon. J. Bemister, R. L. Muir, C. Brown, A. Goodridge. Depository—Mrs. Trenear.

Young Men's Christian Association.

—Adam Scott, President. Rev. George P. Harris, Rev. Charles Pedley, Rev. Moses Harvey, Rev. Donald McRae, Rev. P. Prestwood, Vice-Presidents. Robert Blackwood, Treasurer. Rev. D. McRae, Chairman of weekly meetings. William Stacey, Secretary. A. Forbes, Librarian. Committee—D. Stalker, C. Macpharlan, J. E. Peters, G. Whitten, W. H. Stowe.

Chamber of Commerce, St. John's.

Walter Grieve, President. John Bowring and Stephen Rendell, Vice-Presidents. Ewen Stabb, Secretary and Treasurer. Hon. P. G. Tessier, Hon. N. Stabb, Hon. J. S. Clift, E. D. Tucker, Gustav Ehlers, H. K. Dickinson, R. Alexander, R. L. Muir, F. J. Wyatt. Manager of Commercial Rooms—Matthew H. Warren.

Queen's Printer.

John Collier Withers, Esquire.

Banks.

UNION BANK OF NEWFOUNDLAND.

Directors—Hon. L. O'Brien, Robert Grieve, Robert Alexander, Robert Thorburn, A. W. Harvey.

John W. Smith, Manager. Randal Greene, Accountant and Teller. Charles S. Pinsent and Alfred G. Smith, Clerks. Hon. Hugh W. Hoyles, Q. C., Solicitor.

Discount Days—Mondays and Thursdays, from 12½ o'clock.

Hours of Business—From 10 a.m., to 3 p.m.

COMMERCIAL BANK OF NEWFOUNDLAND.

Directors—Stephen Rendell, John Bowring, Gustav Ehlers, John B. McLea, Frederick J. Wyatt.

Robert Brown, Manager. Peter P. LeMessurier, Teller. William Walsh, Clerk. William B. Dryer, Clerk and Messenger. F. B. T. Carter, Q. C., Solicitor.

Discount Days—Tuesdays and Fridays, from 12½ to 1½ o'clock.

Hours of Business—From 10 a.m., to 3 p.m.

Notaries Public.

St. John's—Hon. George H. Emerson, Hon. Hugh W. Hoyles, Robert Prowse, George F. Bown, Frederick B. T. Carter, Robert R. W. Lilly, Hon. Edward Morris, George J. Hogsett, William H. Mare, John Little, Samuel G. Archibald, Matthew W. Walbank, Thomas J. Kough, William V. Whiteway, Hon. Nicholas Stabb, Matthew H. Warren, Hon. Robert J. Pinsent, D. W. Prowse, Richard B. Holden.

Outports—Harbour Grace—John Hayward, Andrew Drysdale, Henry A. Clift, Lewis W. Emerson. Carbonear—Henry C. Watts. Twillingate—John Peyton. Burin—William Hooper. Brigus—William S. Mills. Bay Roberts—George W. R. Hierlihy. Lamaline—Clement Benning. Burin—Francis Berteau.

Foreign Consulates.

United States of America—Convers O. Leach, Consul for Newfoundland.

Kingdom of Spain—Don Hipolito de Uriate, Consul of Newfoundland. Vice-Consuls—Charles F. Ansell, St. John's; T. Harrison Ridley, Harbour Grace. Consular Agents—John Peyton, Twillingate; James L. Noonan, Greenspond; Israel McNeil, Cape Charles; Nicholas Payne, Dead Island; William Junott, Long Island; Dr. Hay Findlater, Fogo; Gilbert Humphrey Cole, Trinity.

Kingdom of Portugal—Charles F. Bennett, Consul General for Newfoundland. Thomas R. Smith, Consular Agent, St. John's. Vice-Consuls—John Munn, Harbor Grace; William Hooper, Eurin; Charles Edmonds, Twillingate and Fogo; T. Howe, Harbor Breton and Gaultois.

Kingdom of Prussia—Robert Prowse, Consul for St. John's; D. W. Prowse, Consular Agent.

Hamburg—Robert Prowse, Consul; D. W. Prowse, Consular Agent.

Empire of France—J. C. Toussaint, Vice-Consul for Newfoundland.

Kingdom of Italy—Horace le Boutillier, Consul for Newfoundland.

General Water Company.

Directors—Ambrose Shea, President; Hon. Laurence O'Brien, Ewen Stabb, (Government Director), Hon. Hugh W. Hoyles, Q.C., Solicitor. Pierce M. Barron, Secretary.

Assessor of Property under General Water Company Act—John T. Neville.

Collector of Assessment—Robert J. Pinsent.

Military Establishment.

Commanding the Troops—Lieut.-Colonel R. B. McCrea, Royal Artillery.

Garrison Staff—Fort Adjutant—Lieut. W. Gillmor, Royal Canadian Rifles. Acting Garrison Chaplains—Rev. T. M. Wood, Episcopalian, Rev. J. O'Donnell, Roman Catholic. Garrison Sergeant-Major and Staff Clerk—M. Gilligan.

Royal Engineer Department—Commanding Royal Engineer—Captain T. A. L. Murray. Clerk of Works—W. Pearse. Clerk, (temporary)—L. Hanmer. Office Messenger—G. Clarke.

Commissariat Department—Assistant Commissary General, H. Moore. Clerk, (temporary)—C. P. Withell. Assistant Store-keeper and Issuer, J. Devlin.

Military Store Department—Assistant Superintendent of Stores and Acting Barrack Master—J. Tunbridge. Established Clerk—N. Hanmer. Barrack Sergeants—H. Hawkins, P. O'Connor. Storehouse-man—E. Scott. Warder—W. Hammond. Wharfinger, (Queen's Wharf)—W. Francis. Office Messenger—A. Devanna.

Royal Artillery—Lieut.-Colonel R. B. McCrea, R.A., Commanding No. 8 Battery, 10th Brigade, R.A. Captain—C. Wright. Lieutenants—D. N. Taylor, C. J. M. Prother. Assistant Surgeon—A. K. Rickards. District Clerk—G. Scarlett.

Detachment Royal Canadian Rifles—Lieut.-Colonel R. M. Moffatt, Commanding. Captains—A. Gibson, A. S. Quill. Lieutenants—F. J. A. Dunn, W. Gillmor, W. Cavanagh, T. H. S. Donovan, Ensign—C. C. Smyth. Assistant Surgeon—L. O. Patterson, in Medical charge of Troops. Acting Pay Master—Lieut. W. Cavanagh.

Posts and Works—St. John's, (North Side)—Fort Townshend, Fort William; Signal Hill, Store Houses, Magazine and Armoury; Queen's, Waldegrave, Chain Rock and Quidi Vidi Batteries; Military Store Yard, Commissariat House, Office, Fuel Yard and Garrison Bakery, Queen's Wharf, Commissariat and Military Store Houses there inclusive; Engineer House, Office, Workshops and Yard. South Side—Fort Amherst and Magazine.

N.B.—Noon and Evening Guns are fired daily from Queen's Battery. Fort Amherst fires Fog Guns every hour when necessary, &c

also two Guns for Vessels when in Distress at Sea. When practice is carried on by the Royal Artillery, a Flag is hoisted at Fort Amherst.

Newfoundland Rifle Volunteers.

Commander-in-Chief—His Excellency Sir A. BANNERMAN, Knight, Governor, &c., &c.

Deputy-Assistant-Adjutant-General—Captain W. J. Coen, Unattached.

SAINT JOHN'S.

No. 1 (Prince of Wales) Volunteer Rifle Company—Captain, Stephen Rendell. Lieutenant, Henry King Dickinson. Ensign, Nicholas Mudge. Surgeon, James N. Fraser, M.D.

No. 2 (Queen's) Volunteer Rifle Company—Captain, Matthew W. Walbank. Lieutenant, Thomas R. Smith. Ensign, John B. McLea. Surgeon, W. C. Simms, M.D.

No. 3 (Victoria) Volunteer Rifle Company—Captain, William B. Bowring. Lieutenant, Robert Dicks. Ensign, Thomas R. Job.

No. 4 (Terra Nova) Volunteer Rifle Company—Captain, Henry Renouf. Lieutenant, ———. Ensign, Robert J. Parsons, jr.

CONCEPTION BAY.

No. 1 (Harbor Grace) Volunteer Rifle Company—Captain, John Hayward. Lieutenant, Henry T. Moore. Ensign, Robert S. Munn.

Naval.

Commander-in-Chief on the West India and North American Station—

Royal Naval Dockyard, South Side, St. John's.

Revenue and Expenditure, 1862.

Revenue	£116,929 17 1
Expenditure	138,058 17 6

Ships Owned and Registered in Newfoundland.

Number of Vessels	1,386
Tonnage	87,030

Value of Imports and Exports, '58, '59, '60, '61, '62.

	1858	1859	1860	1861	1862
Imports	£1,172,862	£1,324,136	£1,254,128	£1,152,857	£1,007,082
Exports	1,318,836	1,357,113	1,271,712	1,092,551	1,171,723

ABSTRACT FROM NEWFOUNDLAND CENSUS, OF 1857.

Names of Districts.	Number of Inhabitants.	No. of Males.	No. of Females.	No. of Various Religious Denominations							
				Church of England.	Catholics	Wesleyans	Kirk of Scotland	Free Kirk	Congregationalists.	Other Denominations	
St. John's, East	17352	8757	3595	3493	11867	1303	208	256	225		
St. John's, West	13124	6701	6423	2162	10033	579	82	169	192		
Harbor, Maine (Conception Bay)	5386	2789	2597	1160	4153	71	2				
Port-de-Grave ditto	6489	3349	3140	2726	1637	2112	1			13	
Harbor Grace ditto	10067	5285	4782	5490	3390	1112	2	73			
Carbonear ditto	5233	2675	2558	791	2582	1859					
Bay-de-Verds ditto	6221	3274	2947	446	1583	4191		1			
Trinity E. V.	10736	5618	5118	6016	1253	3460		4		2	1
Bonavista	8850	4705	4145	5714	2030	1083		4		14	
Twillingate and J. Fogo	9717	5167	4550	6232	1442	2036		7			
Ferryland	5228	2776	2452	127	5093	8					
Placentia and St. Mary's	8334	4434	3900	966	7156	208	4				
Burin	5529	3005	2524	1356	2354	1810	1			1	7
Fortune Bay	3492	1994	1499	2787	647	30					29
Burgeo and LaPoile	3545	1961	1584	3172	89	282	2				
Totals	119304	62490	56814	42638	55309	20144	302	530	347		44
French Shore	3334	1778	1556	1647	1586	85					16

The Census of the Labrador was cursorily taken by the late Superintendent of Fisheries (James L. Prendergast, Esquire,) in 1856 and 1857, but it is not sufficiently correct or full to form a part of the foregoing Returns. The number of permanent residents, as given by that gentleman, from L'Anse Sablon to Sandwich Bay, both inclusive, including Belle Isle, is 1650, of whom 1331 are Protestants and 319 Catholics.

Total Value,

In Sterling of the Imports and Exports of the Colony of Newfoundland, from and to each Country, in the Year 1862.

COUNTRIES.	IMPORTS THEREFROM	EXPORTS THERETO
United Kingdom	£353,813	£327,019
British Colonies, viz.:		
Jersey	10,459	11,023
Canada	50,448	19,001
Nova Scotia	90,596	37,019
New Brunswick	2,351	
P. E. Island	11,720	909
British W. Indies	24,954	67,528
Ionian Islands		1,875
Foreign Countries, viz.:		
Hanseatic Towns	46,852	3,936
Spain	7,672	206,204
Portugal	9,400	204,808
Italian States	77	41,501
Sicily	128	6,722
Malta	65	2,833
United States	345,797	47,729
Foreign W. Indies	49,727	40,845
Brazil		152,775
St. Peters	3,423	
Total	£1,007,082	£1,171,723

Fire, Life and Marine Insurance Companies.

Phoenix Fire Insurance Company of London.—Established 1782.
Agents for Newfoundland, W. & G. Rendell, St. John's.

Agents for Lloyds—Brooking & Co., St. John's. Ridley & Sons,
Harbor Grace. Philip DeQuetteville, Labrador. John P. Frecker,
St. Pierre.

Colonial Life Assurance Company—Registered and Empowered
under Act of Parliament 7 and 8 Vic. Cap. 110. Capital, £500,000.
St. John's Branch, Walter Grieve, Hon. L. O'Brien, and W. H.
Mare, Directors; Agent and Secretary, Frederick J. Wyatt.

Alliance British and Foreign Life and Fire Assurance Company,
London. Capital, £5,000,000 sterling. Brooking & Co., Agents
for Newfoundland.

The Royal Insurance Company, for Fire, Life and Annuities.—
Royal Insurance Buildings, Liverpool; and 29 Lombard Street,
London. Capital, £2,000,000 sterling. Job, Brothers & Co., Agents,
Newfoundland Branch.

Liverpool and London Fire and Life Insurance Company—Estab-
lished 1836. Capital, £2,000,000 sterling. Invested Fund, £1,

417,808. Income, £570,000. Bowring, Brothers, Agents for Newfoundland.

Britannia Life Assurance Office, London—St. John's Branch, D. W. Prowse, Agent.

Queen Insurance Company of Liverpool and London, for Fire and Life. Capital, £1,000,000 sterling. General Agent for Newfoundland, D. W. Prowse.

Newfoundland Marine Assurance Company. Capital, £25,000. Directors—Alan Goodridge, President; Hon. P. G. Tessier, Hon. James S. Clift, William Kelligrew, Gustav Ehlers, Robert Thorburn, William B. Bowring, Robert Grieve, N. R. Vail. Edward L. Jarvis, Secretary. James Pitts, Surveyor.

International Life Assurance Society, of London. Capital, £500,000 sterling, in addition to about £100,000 currency, of reserved profits. Directors—Hon. Hugh W. Hcyles, Chairman; Charles F. Bennett, Ewen Stabb, Ambrose Shea. Hon. Nicholas Stabb, General Agent for Newfoundland.

Imperial Fire Insurance Company, of London—Established 1803. Capital subscribed and invested, £1,600,000. Agent for St. John's, Thomas G. Morry.

Star Life Assurance Society, Chief Office, 48, Moorgate Street, London. St. John's—W. C. Simms, M.D., Medical Referee. Agent for Newfoundland, Joseph Woods.

Baltimore Underwriters, Boston Underwriters, Twelve Offices.—Boards of Underwriters of the Cities of New York and Philadelphia.

Lamar Insurance Company, New York. Capital, \$300,000.

Continental Insurance Company. Capital, \$500,000—Surplus, \$616,674.

Market Insurance Company, New York. Capital and Assets, \$283,260.

Howard Insurance Company, New York.

American Lloyds. Attorney and Agent for Newfoundland, W. H. Newman. Sub-Agents, W. Thomas & Co.

Liverpool Underwriters' Association—Ridley & Sons, Harbour Grace, Agents.

Life Association of Scotland. Local Directors—Charles Simms, H. K. Dickinson, James Cormack, Robert Grieve, Gustav Ehlers. Dr. W. C. Simms, Medical Officer. E. L. Jarvis, Agent and Secretary.

Northern Assurance Company, of London—Established in 1836. Capital, £2,000,000 sterling; accumulated Funds, upwards of £600,000; annual Revenue, over £200,000. Agent for Newfoundland, Augustus O. Hayward.

North British and Mercantile Insurance Company—Established 1809. Incorporated by Royal Charter and Special Acts of Parliament. Agent for Newfoundland, Ambrose Shea.

Albert Medical & Family Endowment Life Assurance Company, with which is combined the Kent Mutual Assurance Society, London. Established 1838. Agent at St. John's for Newfoundland, Cape Breton and P. E. Island, Bankers, Commercial Bank of Newfoundland.

Mutual Marine Insurance Club of Conception Bay—John Fitzgerald, Secretary.

Mutual Insurance Society of Brigus, Conception Bay—Jonathan Percy, Treasurer and Secretary.

Joint Stock Companies, Public Societies, &c.

New York, Newfoundland, and London Telegraph Company—Directors in New York, Peter Cooper, Moses Taylor, Cyrus W. Field, Marshal O. Roberts, Wilson G. Hunt.

Peter Cooper, President. Cyrus W. Field, Vice-President.—Moses Taylor, Treasurer. David D. Field, Counsel. Alexander M. McKay, Local Manager, St. John's, and Superintendent.

St. John's Gas Light Company—Directors, John Bowring, President; Stephen Rendell, Vice-President; Hon. Richard O'Dwyer, Hon. Laurence O'Brien, Gustav Ehlers, David Sclater, J. B. Wood. William F. Rennie, Secretary.

General Water Company, St. John's.—Incorporated 1859. Directors—Ambrose Shea, President; Hon. Laurence O'Brien, Ewen Stabb, (Government Director.) Hon. Hugh W. Hoyles, Q.C., Solicitor. Pierce M. Barron, Secretary.

Harbor Grace Water Company.—Henry T. Moore, President; R. Walsh, John Munn, William Donnelly, W. H. Ridley, John Hayward, G. Rutherford, Directors.

St. John's Athenaeum—Hon. Nicholas Stabb, President. William Boyd and Adam Scott, Vice-Presidents. E. L. Moore, Curator of Museum. F. R. Page, Curator of Apparatus. D. W. Prowse, Secretary. E. B. Moore, Treasurer, Librarian and Superintendent of Rooms. Committee—Hon. R. Kent, H. Bevens, G. Lash, L. Tessier, James Baird, John Meehan, D. Sclater, J. Adam, J. O. Fraser.—Commercial Bank of Newfoundland, Bankers.

Masonic—Hon. James S. Clift, D. P. G. Master. John G. James, P. G. Secretary. Officers of St. John's Lodge, No. 844—Nicholas S. Stabb, W. M. Richard T. Rankin, S. W. John Hellyer, J. W. Geo. Lash, Treasurer. Henry Winton, Secretary. Thomas McKenzie, S. D. Henry Cook, J. D. Adam Martin, J. G. John Wilkinson, Tyler. Geo. Dick and John Mabin, Stewards.

Officers of Avalon Lodge, No. 1078—W. V. Whiteway and J. N. Fraser, P. M. Theodore Clift, W. M. Dr. Bunting, S. W. — Sherron, J. W. J. F. Chisholm, Treasurer. L. Gill, Secretary.—Rev. C. F. Jagg, Chaplain. T. H. Bird, S. D. — Soper, J. D. H. Snow, J. G. J. Wilkinson, Tyler.

Agricultural Society—His Excellency the Governor, Patron. Dr. Winter, President. William V. Whiteway, Hon. Judge Little, M. W. Walbank, Vice-Presidents. Joseph Crowdy, Treasurer. W. F. Rennie, Secretary.

St. John's Floral and Horticultural Society. President, Sir Francis Brady. Treasurer, Robert Brown. Secretary, John T. Neville.

Harbor Grace Agricultural and Horticultural Society. Henry T. Moore, President.—J. J. Roddiak and R. Walsh, Vice-Presidents. W. Donnelly, Treasurer. H. Clift, Secretary.

Newfoundland Fishermen's Society. Charles Power, President. William Coady, Vice-President. Patrick Ryan, Assistant Vice-President. James McLaughlin, First Treasurer. James Glindon, Second Treasurer. Thomas Duff, Third Treasurer. Laurence Barron, Secretary. Michael Costigan, Assistant Secretary.

Floating Dry Dock Company. S. Rendell, President. G. Ehlers, Vice-President. Hon. P. G. Tessier, Pierce Feehan, Robert Grieve, Robert Alexander, William B. Bowring, Directors.

St. John's Phoenix Volunteer Fire Company. Francis Boggis, First Director. ———, Second Director. Patrick Reardon, Treasurer. Philip Hally, Secretary.

Cathedral Fire Brigade. Patrick O'Sullivan, First Director. William McGrath, Second Director. Thomas Brine, Treasurer. John Donnelly, Secretary.

Harbor Grace Volunteer Fire Company. Michael Hartery, First Director. John Keefe, Second Director. P. Walsh, Treasurer.—Henry J. Fitzgerald, Secretary. S. Beaker, Superintendent of Engine.

Manufactories, Mills, Works, &c. St. John's—2 Corn Mills, 2 Saw Mills, 1 Bone Mill, 1 Gas Manufactory, 1 Iron Foundry, 2 Distilleries, 1 Water Works, 4 Bakeries, (by Machinery), 1 Patent Slip, 1 Floating Dock. Brigus—1 Corn Mill. Harbor Grace—1 Corn Mill, 1 Gas Manufactory, 1 Water Works. Exploits Bay—2 Saw Mills. Middle Arm of Green Bay—1 Saw Mill. Exploits (Burnt Island)—2 Saw Mills. Hall's Bay—2 Saw Mills. Trinity Bay—5 Saw Mills.

Benevolent and Charitable Societies. &c.

Benevolent Irish Society—Founded 1806. The Right Rev. Dr. Mullock, Patron. Hon. L. O'Brien, Vice-Patron. Hon. Edward Morris, President. John Little, Vice-President. Thomas S. Dwyer, First Assistant. John Blundon, jr., Second Assistant. John Power, Treasurer. Robert J. Kent, Secretary. William Doutney, Chairman Orphan Asylum. John O'Donnell, Chairman of Charity. John Rawlins, Chairman of Review and Correspondence. Maurice Brien, Secretary Orphan Asylum School.

Church of England Asylum for Widows and Orphans—His Excellency the Governor, Patron. The Right Rev. Dr. Feild, Visitor and President. The Venerable the Archdeacon, Rev. T. M. Wood, Vice-Presidents. The Right Rev. the Visitor and President (*ex officio*), Henry K. Dickinson, John Winter, M.D., Trustees. Hon. James S. Clift, Treasurer. Rev. G. M. Johnson, Honorary Secretary. Charles Crowdy, M.D., Physician. Committee—John Hogsett, F. B. T. Carter, Thomas Clift, Philip Hutchings, John Tunbridge, John H. Warren, Rev. John Pearson, Judge Robinson, Hon. H. W. Hoyles, W. H. Mare.

St. John's Factory—Honorable Laurence O'Brien; Thomas Glen, James J. Rogerson, Edmund Hanrahan, Trustees.

St. George's Society—John C. Withers, President. W. V. Whiteway and Hon. J. S. Clift, Vice-Presidents. Henry T. Wood,

Treasurer. A. O. Hayward, **Secretary.** Committee of Charity—The above-named officers, and the Revs. T. M. Wood, C. Pedley, G. M. Johnson, Geo. T. Rendell, John Bowring, George F. Bown, Henry Winton, Charles R. Ayre, Thomas R. Smith, F. J. Wyatt. **Physician**—Dr. H. H. Stabb.

St. Andrew's Society—Adam Scott, **President.** Dr. Fraser, **Vice-President.** James Baird, **Treasurer.** Alexander Taylor, **Secretary.** Committee of Charity—Charles Rankin, Robert Blackwood, and Robert Pease. **Medical Advisers,** Drs. McKen and Fraser.

Newfoundland British Society—Samuel Carnell, **President.** J. Furneaux, **Vice-President.** Henry W. Seymour, **Treasurer.** Henry Charles, **Secretary.**

British Society of Conception Bay—Henry T. Moore, **President.** W. Squarry, **Vice-President.** G. G. Rutherford, **Treasurer.** T. Ross, **Secretary.**

Society of St. Vincent de Paul—John Little, **President.** Valentine Merchant, **Vice-President.** John Rawlins, **Assistant Vice President.** Laurence Macassay, **Treasurer.** William Douiney, **Secretary.**

Grand Division of the Sons of Temperance—Rev. Charles Ladner, G.W.P. J. J. Rogersan, G.W.A. E. Brace, G.S. J. Romy, G.T. J. English, G.Ch. J. Murray, jr., G.Con. J. N. Carter, G.Sen.

Free St. Andrew's Total Abstinence Association—**President.** Rev. M. Harvey.

Total Abstinence and Benefit Society—Charles Kickham, **President.** Matthew Power, **Vice-President.** W. Ferguson, **First Assistant.**—J. Kavanagh, **Second Assistant.** William McGrath, **First Treasurer.** Patrick Coonan, **Second Treasurer.** Patrick Reardon, **Secretary.**

Mechanics' Society—Valentine Merchant, **President.** John Power, **Vice-President.** Patrick Dealy, **First Assistant.** Richard Hanley, **Second Assistant.** William McGrath, **First Treasurer.** John Mockler, **Second Treasurer.** William Kelly, **Third Treasurer.** William L. Mellowney, **Secretary.** Henry Shen, M.D., **Physician.**

Dorcas Society, St. John's—Mrs. Finlay, **President.** Mrs. Bemister, **Treasurer.** Mrs. Christopher Brown, **Secretary.** Mrs. Smith, Mrs. Bemister, Mrs. Hendel, Mrs. Reid, **Collectors.** Mrs. Smith, Mrs. Brown, **Dispensers.**

Dorcas Society, Harbor Grace—Mrs. Drysdale, **President and Treasurer.**

Dorcas Society, Carbonear—Mrs. Winterbotham, **President and Treasurer.**

Benevolent Irish Society, Conception Bay—**Founded in 1814.**—The Right Rev. Dr. Dalton, **Patron.** John Fitzgerald, **President.** Patrick Devereux, **Vice-President.** Andrew T. Drysdale, **First Assistant.** William Howlett, **Second Assistant.** Robert Walsh, **Treasurer.** James Bulger, **Secretary.** John Byrne, **Chairman of Charity.** P. Walsh, **Chairman of Review and Correspondence.**

Trinity Benefit Club—**Instituted 1838.** William Kelson, **Treasurer.**

The Royal Family of Great Britain.

QUEEN ALEXANDRINA VICTORIA (only child of Edward Duke of Kent, who died January 23, 1820), born May 24, 1819; proclaimed June 21, 1837; crowned June 28, 1838; married February 10, 1840, to her cousin, Albert Francis Augustus Charles Emanuel, of Saxe Coburg and Gotha, born August 26, 1819, died December 14, 1861, Children:—

Victoria Adelaide Maria Louisa, Princess Royal, born November 21, 1840.

Albert Edward, Prince of Wales and Earl of Dublin, born November 9, 1841.

Alice Maud Mary, born April 25, 1843.

Alfred Ernest Albert, born August 6, 1844.

Helena Augusta Victoria, born May 25, 1846.

Louisa Carolina Alberta, born March 13, 1848.

Arthur William Patrick Albert, born May 1, 1850.

Leopold George Duncan Frederick, born April 7, 1853.

Beatrice Mary Victoria Feodora, born April 14, 1857.

Her Majesty's Chief Officers of State.

THE CABINET.

First Lord of Treasury—Viscount Palmerston, K.G.

Chancellor of the Exchequer—Right Hon. W. E. Gladstone.

Secretary of State for Foreign Department—Earl Russell.

Secretary of State for the Home Department—Sir George Grey.

Secretary of State for the Colonies—The Duke of Newcastle.

War Secretary—Earl de Grey and Ripon.

Secretary of State for India and President of Indian Council—Sir C. Wood, G.C.B.

First Lord of the Admiralty—The Duke of Somerset.

High Lord Chancellor—Lord Westbury.

President of the Council—Earl Granville, K.G.

Privy Seal—The Duke of Argyll, K.T.

President of the Board of Trade—Right Hon. T. Milner Gibson.

Chancellor of the Duchy of Lancaster—Right Hon. Ed. Cardwell.

Post Master General—Lord Stanley of Algerley.

President of the Poor Law Board—Right Hon. Charles P. Villiers.

IRELAND.

Lord Lieutenant—Earl of Carlisle.

Chief Secretary—Right Hon. Sir Robert Peel.

Lord Chancellor—Right Hon. M. Brady.

Appendix.

The following notifications and appointments have been made since the foregoing sheets went to press:—

Member returned to serve in the General Assembly of Newfoundland, for the District of Bonavista—Frederick Joseph Wyatt, Esquire.

The Rev. Robert Holland Taylor, to be a member of the Protestant Board of Education, for Brigus, in the room of Rev. William Shannon, who has left that District.

William Lethbridge, to be a member of the Protestant Board of Education, and also of the Commercial School Board, at Twillingate, in the room of Charles Duder, who has left that District.

Richard Hamilton, to be a member of the Board of Road Commissioners at Fortune Harbour, in the room of James Hamilton, resigned.

[Omitted in the Revenue Department.]

LABRADOR—*Collection of Duties under Acts 26 Vic., Cap. 1 and 2.*

Collector—James Winter, Esq. (Sub-Collectors appointed by Collector, subject to control of Governor in Council, under Act. 26 Vic., Cap. 2, Sec. 10.)

[Omitted in the Judicial Department.]

JUSTICES OF THE PEACE.

St. George's Bay—Horatio H. Forrest, Elwin Alexander.

Labrador—Nathan Norman, Thomas R. Crockwell, Donald A. Smith, William B. Bendall, Sampson Daw, Henry Warren, Thomas G. Larmour, George Goodridge.

LABRADOR COURT—*Under Act 26 Vic., Cap. 2.*

Judge—B. Sweetland, J. P., Esq.

Bailiff—Jonas Purchase.

[Omitted in List of "Fire, Life, and Marine Insurance Companies."]

Canada Life Assurance Company—Established, 1847. Capital, \$1,000,000, Dr. J. N. Fraser, Medical Adviser. Agent at St. John's, Newfoundland, James Bayly.

Erratum—Page 48, "St. John's Gas Light Company," should be Stephen Rendell, President, instead of Vice-President, and John Bowring, Vice-President, instead of President.

ABSTRACT

CENSUS & RETURN OF THE

Population, &c., of Newfoundland,
TAKEN IN 1857.

Printed on good paper, royal quarto, and substantially half-bound, for sale at the office of the *Courier*, Duckworth Street, third door West of Prescott Street, and at the Stationary Stores of Mr. T. McConnon, and Mr. J. F. Chisholm, Water Street.

PHOENIX**Fire Assurance Company,**

Lombard Street and Charing Cross, London,

ESTABLISHED 1782.

*For Insuring every kind of PROPERTY, in all parts of the
World, from Loss, or Damage by Fire.*

TRUSTEES AND DIRECTORS.

Decimus Burton, Esq.
Travers Buxton, Esq.
Octavius Edward Coope, Esq.
William Cotton, Esq.
John Davis, Esq.
George Arthur Fuller, Esq.
Charles Emanuel Goodhart, Esq.
James Alexander Gordon, Esq.
Edward Hawkins, Junr., Esq.

Kirkman Daniel Hodgson, Esq.
William James Lancaster, Esq.
John Dorien, Magens, Esq.
John Timothy Oxley, Esq.
Benjamin Shaw, Esq.
William James Thompson, Esq.
Henry Heyman Toulmin, Esq.
Matthew Whiting, Esq.

Secretary—George William Lovell, Esq.

Assistant Secretary—James J. Broomfield, Esq.

THE PHOENIX COMPANY,

During its long career, has stood unrivalled for stability and liberality, and the importance of its relations with the public may be estimated from the fact that since its establishment it has paid more than *Eight Millions Sterling* in discharge of claims for Losses by Fire, of which sum, nearly

£250,000**HAVE BEEN PAID FOR LOSSES IN NEWFOUNDLAND.**

The security offered to the public by the Phoenix Office is unlimited, comprising, in addition to the large invested Capital of the Company, the whole fortunes of a numerous Proprietary.

Annual and short time Insurances are effected on all kinds of Property in Newfoundland on most favorable terms.

Rates of Insurance, many of which have been lately reduced, may be known on application to the Agents at the Office in St. John's.

W. & G. RENDELL,*Agents for Newfoundland.*

ROYAL
INSURANCE COMPANY.

HEAD OFFICES:—

29, LOMBARD STREET, LONDON;

AND

ROYAL INSURANCE BUILDINGS, LIVERPOOL.

Total Annual Revenue, **£500,000.**

Accumulated Funds in hand, over £1,000,000.

FIRE BRANCH:

Premiums for the past year exceed £300,000, shewing the increasing prosperity of the office.

LIFE BRANCH:

The sum assured on New Policies for the year 1862, exceeds even that of the year 1861 by £180,000, and has arrived at the almost unexampled amount, for a single year, of £107,427 on 1,498 new policies issued, a result almost unheard of.

Actuary and Manager,

PERCY M. DOVE, Esq.

Agents, Newfoundland,

JOB, BROTHERS, & CO.

ESTABLISHED 1846—Capital, £1,000,000.

**THE COLONIAL
LIFE ASSURANCE COMPANY,**

Incorporated by Special Act of Parliament.

Governor.—The Right Hon. the Earl of Elgin and Kincardine,
Governor-General of India.

HEAD OFFICE :

6 GEORGE STREET, EDINBURGH. 81 LOMBARD STREET,
AND 10 ST. JAMES'S STREET, LONDON.

Board of Directors in St. John's, Newfoundland.

Hon. LAURENCE O'BRIEN, Merchant,

WALTER GRIEVE, Esq. Merchant

WILLIAM HENRY MARE, Esq.

Medical Adviser—HENRY HUNT STABB, M.D.

Agent—FREDERICK J. WYATT.

POSITION OF THE COMPANY.

**Annual Income of the Company upwards of One
Hundred and Thirty Thousand Pounds Stg.**

The Company have divided Profits on two occasions—in 1854
and 1859.

A Policy for £1000, opened in 1847, has been increased to £1235
by the application of the Bonus; other Policies in proportion.

Profits divided every five years; next Division in 1864.

Premiums Received in any part of the world where Agencies have
been established.

Claims Settled at Home or Abroad.

Further information will be supplied at the Company's Offices and
Agencies.

By Order of the Directors,

FREDERICK J. WYATT,

Agent and Secretary to the Local Board

at St. John's Newfoundland.

ALLIANCE

BRITISH AND FOREIGN.

Life and Fire Assurance Company,
BARTHOLOMEW LANE, LONDON.*Established by Act of Parliament.***CAPITAL—£5,000,000—Sterling.***Board of Direction.**President.*—Sir Moses Montefiore, Bart.*Directors.*

James Alexander, Esq.
 Charles G. Barnett, Esq.
 George H. Barnett, Esq.
 Benjamin, Cohen, Esq.
 James Fletcher, Esq.
 William Gladstone, Esq.
 Samuel Gurney, Esq., M.P.
 James Helme, Esq.

Sampson Lucas, Esq.
 Elliot Macnaghten, Esq.
 Thomas Masterman, Esq.
 J. M. Montefiore, Esq.
 Sir A. De Rothschild, Bart.
 Baron L.N. DeRothschild, M.P.
 Oswald Smith, Esq.
 Thomas Charles Smith, Esq.

Auditors.—Sir T. Fowell Buxton, Bart., George Peabody, Esq.,
 Oswald A. Smith, Esq.

Bankers—Messrs. Barnett, Hoare, Bennett & Co.

Actuary—Francis A. Engelbach, Esq.

Secretary—David Maclagan, Esq.

Physician—George Owen Rees, M.D., F.R.S., 26, Albemarle Street.

Standing Counsel—Arthur Cohen, Esq.

Solicitors—Messrs. Pearce, Philips, Winckworth and Pearce.

Surveyors—Wyatt Papworth, Esq.—Thomas G. Allason, Esq.

Established March, 1824.

The Rates of the Premiums of Assurance for the greater part of LIFE, will be found lower than those in use in many of the older and most respectable Offices.

The Premiums of Assurance on FIRE, are the same as those which are demanded by the first class of Assurance Companies.

Losses by LIGHTNING made good.

BROOKING & Co.*Agents.*

IMPERIAL
Fire Insurance Company,

LONDON.

Instituted 1803.

SUBSCRIBED AND INVESTED CAPITAL,
One Million Six Hundred Thousand Pounds.

Directors :

Sir CHARLES RUGGE PRICE, Bart., Chairman.

EDWARD HENRY CHAPMAN, Esq., Deputy-Chairman.

Thomas G. Barclay, Esq.
James Christian C. Bell, Esq.
R. Cooper Lee Bevan, Esq.
James Brand, Esq.
George H. Cutler, Esq.
Henry Davidson, Esq.
Duncan Dunbar, Esq.
Samuel Hibbert, Esq.
Sir John Kirkland, Esq.
William Lyall, Esq.

James Malcolmson, Esq.
Claude Neilson, Esq.
Frederick Patison, Esq.
John Sanderson Rigge, Esq.
William R. Robinson, Esq.
John Scott, Esq.
M. T. Smith, Esq., M.P.
Newman Smith, Esq.
Richard Twining, Esq.

Ex-Directors :

Augustus H. Bosenquet, Esq.
Charles Cave, Esq.
George Field, Esq.

George Hibbert, Esq.
Samuel Hyde, Esq.
James G. Murdoch, Esq.

Auditors :

Paul Butler, Esq.
Isaac Carr, Esq.
George William Cottam, Esq.

Thomas A. Gibb, Esq.
Charles Marryat, Esq.

Ex-Auditor :

James Scott, Esquire.

Agent, St. John's, Newfoundland,

THOMAS G. MORRY.

THE
**Queen Insurance
 Company.**

CHIEF OFFICE :—

QUEEN INSURANCE BUILDINGS, LIVERPOOL.

BRANCH OFFICES :—

LONDON—83, King William Street, E.C.

MANCHESTER—30, St. Ann's Street.

GLASGOW—146, Buchanan Street.

DUBLIN—3, Westmoreland Street.

NEWCASTLE-ON-TYNE—Exchange Buildings, Quay Side.

CAPITAL—£1,000,000 Sterling.

Trustees :—

THOMAS EDWARDS MOSS, Esq., Banker, (Moss & Co.)—
 Liverpool.

CHRISTOPHER BUSHELL, Esq., Wine Broker, (C. Bushell & Co.)
 —Liverpool.

EDWARD HEATH, Esq., Merchant, (E. Heath & Co.) Liverpool.

Chairman of the Company :—

BERNARD HALL, Esq., Merchant, (Bernard Hall & Co.)—
 Liverpool.

Deputy-Chairman :—

JOSEPH KITCHEN, Esq., Merchant, (Duncan and Kitchen)—
 Liverpool.

Manager and Actuary of the Company :—

J. MONCRIEFF WILSON, Esq., Liverpool.

Sub-Manager :

JOHN E. LEYLAND, Esq., Liverpool.

Insurances effected on all kinds of Property at moderate rates of premiums—and all losses settled with the promptitude and fairness which has hitherto characterized the Company in all its dealings with the public, all over the world.

D. W. PROWSE.

General Agent for Newfoundland.

JOHN HAYWARD, Harbor Grace.

Agent for Conception Bay.

NORTHERN ASSURANCE COMPANY.

ESTABLISHED IN 1836.

Capital—TWO MILLIONS Sterling.

Accumulated Funds upwards of £600,000—Annual Revenue over £200,000.

Head Offices of the Company and Boards of Direction.

LONDON—1, Moorgate Street.

Chairman—William Millar, Esq., M.P.

George G. Anderson, Esq.

Duncan James Kay, Esq.

Charles Bell, Esq.

Sir Charles R. M'Grigor, Bart.

Thomas Newman Farquhar, Esq.

William Munro Ross, Esq.

Secretary—A. P. Fletcher.

Vice-Secretary—Edward Fuchs.

ABERDEEN—3, King Street.

Chairman—John Cruickshank, Esq., LL.D.

William Adam, Esq.

William Leshe, Esq.

Alexander Chivas, Esq.

Benjamin Moir, Esq.

Robert Fletcher, Esq.

John Yeats, Esq.

General Manager—William Chalmers.

Secretary—H. A. Smith.

FIRE DEPARTMENT :

Insurance against FIRE is granted on every description of Property, on the most favorable conditions.

LIFE DEPARTMENT :

The Company grants Insurance on Lives in Newfoundland at the European rates of premium.

Medical Examiner—Charles Crowdy, Esq., M.D.

Besides the Ample Funds of the "Northern," Insurers have the additional security afforded by a large and influential body of Proprietors, whose liability is unlimited. In this particular, the security afforded by the "Northern" exceeds that of most other British Insurance Companies, the great majority of whom limit the liability of their Shareholders to the amount of their subscribed Capital.

Prospectuses and all information can be had at the Office of the Agency.

AUGUSTUS O. HAYWARD.

Agent for Newfoundland.

LONDON AND LANCASHIRE
Fire & Life
INSURANCE COMPANIES.

FIRE CAPITAL,
£1,000,000.

LIFE CAPITAL,
£100,000.

Home and Foreign Fire and Life Insurance
Business transacted at moderate rates.

OFFICES OF THE COMPANY :

HOME.

London (Head Office)—73 & 74, KING WILLIAM ST., E.C.

Liverpool—BROWN'S BUILDINGS, EXCHANGE.

Manchester District Office—24A, PRINCESS STREET.

Leeds District Office—8, PARK ROW.

Scottish Branch Offices— { GLASGOW, INDIA BUILDINGS
 29, GORDON STREET.
 EDINBURGH, 4, GEORGE ST.

Dublin Branch—13, WESTMORELAND STREET.

FOREIGN.

Canada Branch Office—36, ST. FRANCOIS XAVIER
 STREET, MONTREAL.

Australian Branch—MELBOURNE.

Newfoundland, St. John's. M. H. WARREN.

The two Companies are established under different Deeds, and with separate Capital: the advantages, therefore, of keeping the Capital of each Company distinct is secured, whilst mutual benefit will be obtained by a unity of interest, and by the saving of expense, in consequence of the business of the two Companies being conducted in the same offices, and, as far as practicable, by the same Management, and by the same machinery of Agents.

Principal Features of the Company.

Bonuses given to the holders of Policies at stated intervals.

Discount on Premiums allowed on Insurances effected for Two Years and upwards.

Promptness and liberality in the settlement of Claims.

Gas Explosion.—Losses by Explosion of Gas paid for.

Lightning.—Losses by Fire arising from Lightning made good.

M. H. WARREN, Agent for Newfoundland.



ELMSLY & SHAW,

GENERAL GROCERS,

AND

Wine and Spirit Merchants,

ST. JOHN'S, NEWFOUNDLAND.

Star Life Assurance Society,

48, Moorgate Street.

TRUSTEES,

George Smith, LL.D.
William Betts, Esq.

William Skinner, Esq.
Frederick Mildred, Esq.

THE STAR LIFE ASSURANCE COMPANY was founded in the year 1843. It was established by members of the Wesleyan Methodist Society, and is the only Company connected with that Body.

By its Deed of Settlement special provision is made that a majority of the Directors shall be accredited Wesleyan Methodists. The STAR has been largely adopted by the Itinerant Preachers, as a medium for family Provision—upwards of 500 being already assured in this Company.

NEWFOUNDLAND AGENCY.

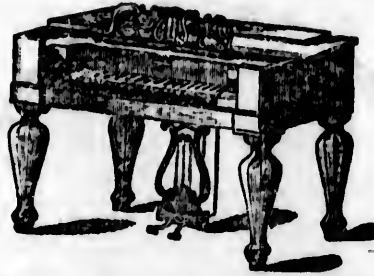
Medical Referee:—W. C. SIMMS, Esq., M.D., Member of the Royal College of Surgeons, Edinburgh.

JOSEPH WOODS, Agent for Newfoundland,

GEORGE A. PRINCE & CO.'S

IMPROVED

PATENT



PRIZE

MEDAL

MELODEONS, ORGAN MELODEONS,
AND
SCHOOL ORGANS ! !

30,000 have been finished and are now in use ! !

AGENT FOR NEWFOUNDLAND,
F. W. BOWDEN, Express Building, St. John's.

Organ Melodeons.

Two Banks of Keys, Five Sets of Reeds, Eight Stops, One and a Half Octave Foot Pedals, One Set of Reeds in Pedal Bass Independent, Rosewood,.....	£96 0 0
One Bank of Keys, Three Sets of Reeds, Six Stops, with Foot Pedals, and Set of Reeds in Pedal Bass Independent, Black Walnut,.....	68 15 0

School Organs, or Harmoniums.


Five Octave,	27 10 0
Four and a half Octave,	22 10 0

Piano Cased Melodeons.

Five Octave, Two Banks of Keys,.....	55 0 0
Five Octave, Double Reed, F to F,.....	41 0 0
Six Octave, F to F,.....	86 10 0
Five Octave, F to F,.....	27 10 0

Portable Melodeons.

Five Octave, Double Reed, F to F,.....	86 10 0
Five Octave, F to F,.....	20 0 0
Four and a Half Octave, C to F,.....	16 5 0
Four Octave, C to C,.....	18 15 0
Singing Teachers' Melodeon,.....	10 0 0

 A beautifully illustrated Catalogue, (p.p. 48,) forwarded to any person, by post or otherwise, on application to

F. W. BOWDEN, Express Building, St. John's.

RICH & PITMAN,

Nos. 82, 84, and 86, UNION STREET,

BOSTON, MASS.,

Manufacturers of all kinds of

TRUNKS, VALISES

Carpet, Leather, and Enamelled-cloth

BAGS,

Umbrellas, Patent Leather Belts,

HORSE BLANKETS

SADDLES, HARNESS, &c., &c.

COMMON TRUNKS

For Shipping, made to Nest Seven together, at

Prices that will *defy competition.*

Parties in want of any of the above Goods will find it to their advantage to give us a call.

H. A. TEULON,

CARD ENGRAVER,

ROOMS IN "ARMORY HALL" BUILDING,

No 323 Washington Street, three doors North of West Street.

CARDS

Engraved on Copper Plate, in the most fashionable styles, at the following low prices. The sum at the extreme right is that charged at all other places in Boston for precisely the same articles.

1 Engraved Plate and 50 Cards for Visiting	\$1.75	3.00
1 Engraved Plate and 100 Cards for Weddings	2.75	4.50
1 Engraved Plate, with Residence, for Weddings, and 100 Cards	3.00	5.00
1 Invitation Plate and 100 Cards, for Weddings	4.50	7.00
100 Cards, and Printing from an old Plate	1.50	2.00

The above shall be engraved in the neatest styles, and Printed on the best Cards used.

Also, constantly on hand, a choice assortment of Wedding Envelopes, Cake-Boxes, Colored, Fancy and Mourning Cards, Mourning Note Paper, and Wedding Stationery generally.

Business Cards.

Alexander Mitchell,

AUCTIONEER

AND GENERAL COMMISSION AGENT,*Opposite Job, Brothers & Co.,*WATER STREET, ST. JOHN'S, NEWFOUNDLAND.

Edgar Stirling,**GENERAL COMMISSION AGENT,**

OFFICE :—Rogerson's Buildings, No. 360, Water Street.

ST. JOHN'S, NEWFOUNDLAND.

Always on hand, a General Supply of

Groceries, Provisions, &c.

SHIPS' STORES CAREFULLY MADE UP TO ORDER.

J. F. CHISHOLM**Bookseller and Stationer,**

DEALER IN

Periodicals, Newspapers, Music, &c.,175, WATER STREET.....ST. JOHN'S, NEWFOUNDLAND.

Piano Fortes and Melodeons always on hand.*Books, Music, &c., procured to order with despatch at Publishers' prices.*

Any description of small articles imported from the United States on the most reasonable terms.

Contents.

Abstract from Newfoundland Census of 1867	55
Appendix	52
Advertisements	53
Board of Revenue	19
Board of Works	19
Boards of Road Commissioners	20
Board of Health	30
Barristers and Attornies of Supreme Court	30
Barristers and Attornies, Harbor Grace	31
Banks—Savings' Bank	26
Union Bank of Newfoundland	41
Commercial Bank of Newfoundland	42
Benevolent Institutions, Charitable Societies, &c.	49
Calendar, Chronological Eras, &c.	2
Calendar Pages—Moon's Phases, Sun's Rising and Setting at St. John's every day in the year, Sun's Declination, Equation of Time, High Water at St. John's every Morning and Afternoon, Memoranda, &c.	5-16
Colonial Secretary's Office	18
Customs Department	19
Court Houses and Keepers	22
Commissioners for Erection of Public Wharf (Catalinas)	22
Commissioners for Erection of Breakwaters	22
Commissioners of the Poor	29
Commissioners for Reduction of Public Debt	29
Commissioners of Pilots and Rates of Pilotage	29
Commissioners of Wrecked Property	30
Clerks of the Peace	33
Coroners	33
Commercial Schools	34
Colonial and Continental Church Society Schools	34
Clergy of different Denominations	36
Converts	39-40
Chamber of Commerce	41
Commissioners of Affidavits, &c. in S. and C. C. Courts	31
District Surgeons	32
Eclipses for the year 1864	2
Executive Council	17
Fixed and Moveable Festivals, Anniversaries, &c.	2
Financial Secretary's Office	19
Foreign Consuls	42
Governor, Commander-in-Chief, and Vice-Admiral of Newfoundland	17
Gaols and Gaolers	32
Grammar Schools	34
General Water Company	48

ND.

DER.

BLAND.

Pub-

United

House of Assembly	17
Harbor Grace Free School (St. Patrick's)	37
Her Majesty's Chief Officers of State	51
Insurance Companies—Fire, Life, and Marine	46
Judicial Department	30
Justices of the Peace	32
Joint Stock Companies, Public Societies, &c.	48
Latitude and Longitude of St. John's	2
Latitude and Longitude of places on the Coast of Newfoundland	3
Legislative Council	17
Light Houses and Lights	23
Laymen Licensed to Celebrate Marriage	40
Meteorological Observations for the years 1860, '61 and '62	7
Military Establishment	43
Note to Tide-Tables	2
Private Secretary to the Governor	17
Newfoundland Church Society	38
Newfoundland Rifle Volunteers	44
Naval Establishment	44
Notaries Public	42
Post Office Department, Postal Routes and Rates of Postage	26
Police	33
Protestant Boards of Education	35
Queen's Printer	41
Revenue Establishment	19
Roman Catholic Schools	37
Roman Catholic Boards of Education	37
Religious Tract and Book Society	41
Revenue and Expenditure, 1862	44
Royal Family of England	51
Surveyor General's Office	18
St. John's Hospital	22
St. John's Poor House	22
St. John's Lunatic Asylum	22
Stipendiary Magistrates	32
St. John's Academy	33
St. John's Presbyterian School	35
St. John's Catholic College of St. Bonaventure	39
St. John's and Newfoundland Bible Society	41
Ships Owned and Registered in Newfoundland	44
Sterling value of Imports and Exports from and to each Country in 1862	16
Treasury Department	19
Terms of Supreme and Central Circuit Courts	31
Theological Institution (Church of England)	38
Vice Admiralty Court	31
Value of Imports and Exports for 1858, '59, '60, '61, and '62	44
Wesleyan Academy	34
Wesleyan Methodist School and Agency Society and Schools	35
Young Men's Christian Association	41

William Bulley

Commission Merchant and General Agent,

PREMISES being most centrally situated in Water Street, as an AUCTION MART is unrivalled in the City, and persons wishing to dispose of their GOODS, by entrusting them to his Care may ensure speedy Sales and prompt Returns. He would respectfully solicit the patronage of his Friends in the Provinces for Sales of MEATS, POULTRY, &c., &c.

St. John's, Nfld., December 1863.

Bogle's Wigs and Hair Work !

Truest to Nature, irreproachable in Style, and Perfect in Fit !

NONE CAN EQUAL THEM.

☞ Sole Agent for the Royal Transparent Parting. ☜

OBSERVE THE DOTTED LINES.

No. 1—The Circumference of the head.

No. 2—Temple to temple—across the back.

No. 3—Forehead to nape of the neck.

No. 4—Ear to ear over the temple.

Nos. 1, 3 & 4, are to be particularly observed.



☞ Persons residing in any part of the world can be beautifully fitted to a Wig, or Toupee, by measuring their heads as above, and sending a sample of their hair, and stating also the style and manner in which they usually wear it.

BOGLE'S ELECTRIC HAIR DYE,

Best and Cheapest in the World. No smut, no skin staining ; but pure, permanent and natural. Try—be convinced.

Prices, 50 cents, \$1.00, \$1.50.

Are you getting Bald ? is your Hair turning Grey ? BOGLE'S HYPERION FLUID is the great Restorer, Dresser and Curler of HAIR,—all others are sham imitations. Prices, 25, 50, 75, cents, \$1.00 and \$1.50.

BOGLE'S Balm of Cytherea beautifies the complexion, Prices 50c. Sold by Druggists throughout the United States, Canadas, and England.

Proprietor, W. BOGLE, 202, Washington Street, Boston, Mass. Opposite Marlboro' Hotel. Every Toilet Article kept for Sale.

17
37
51
46
30
32
48
2
3
17
23
40
7
43
3
17
38
44
44
42
26
33
35
41
19
37
37
41
44
51
18
22
22
22
32
33
35
39
41
44
46
19
31
38
31
44
34
35
41



Correct in principle, thorough in construction, accurate, convenient and durable in operation.

The SCALES are still made under the supervision of the original Inventors, and are constantly receiving improvements, based on the skill and experience of more than THIRTY years devoted only to this branch of business. They have received *more first class premiums* than ALL other Scales; and what is of more practical value, have received the award of SUPERIOR EXCELLENCE by the *vast numbers* who have used them for many years. At our Warehouse, may constantly be found a complete assortment of all kinds of weighing apparatus adapted to every branch of business, as Hay, Coal, Railroad, Ice, and Stone Scales; Platform, Counter and Warehouse Scales; Druggists', Confectioners', Butchers' and Gold Scales; with an ample variety of *Store Furnishing Equipments*, as Sugar Mills, Alarm Money Drawers, Measures, Weights, &c.—All warranted in every respect.

FAIRBANKS & BROWN,

118 MILK STREET, CORNER OF BATTERYMARCH STREET, BOSTON.

Sold in St. John's, Nfld., by

JAMES GLEESON, and CLIFT. WOOD & Co.

ent

nal
on
to
re-
ue,
m-
may
ing
il-
use
ith
lls,
in

ON.

