

Historic, Archive Document

Do not assume content reflects current scientific knowledge, policies, or practices.

62.73

Recorded

MAY 16 1928

MAY 19 1928

MOHICAN PEONIES 1928

Import Division

LIBRARY

RECEIVED

★ MAY 28 1931 ★

U.S. Department of Agriculture





MOHICAN PEONY GARDENS

Gardens at
Sinking Spring, Penna.

Office
Reading, Penna.

Copyright 1928
MOHICAN PEONY GARDENS





LA TULIPE—Four-year Old Plant with Two Hundred and Fifty Blossoms. Awarded First Prize in the Mohican Photograph Contest. Submitted by W. D. Lang, Cawston, British Columbia.



PEONIES AT THE GARDEN GATE—Awarded Second Prize in the Mohican Photograph Contest. Submitted by Mrs. W. A. McKim, Winnipeg, Manitoba.



FOREWORD

IN offering this our twenty-seventh annual catalog, we are taking a radical step for the Mohican Gardens, offering not only Mohican clumps but also three- to five-eye divisions.

We leave to you to decide how you wish to plan your garden. Our large mature roots will bring quick results—quicker, on the average, by two years. The extra cost of clumps will save you two years of cultivation, care and waiting.

Our prices for divisions are, in most cases, two-thirds the cost of clumps. The resulting saving is alluring.

Our roots of either size will produce the same beautiful flowers—true to name, as always guaranteed by the Mohican Gardens, with free replacement in case of error on our part.

The Illustrations

IT should interest those who have not previously received our catalog to know something about the photographs reproduced in these pages.

The responsive peony urges the photographer, amateur or professional, to do his best to record the beauty it adds to his garden. We encourage this natural impulse by offering more peonies to reward successful pictures.

The Mohican Photograph Contest is intended to promote keener interest in the lovely and often very different characteristics of named varieties. It gives to the gardener a livelier zest for knowing the personalities of his flowers with their often strange, long names; strange at first acquaintance but soon taking on definite denotations such as distinctive color, form or fragrance.

The pictures reproduced here are but a few of the many we received last year; all picturing the genuine satisfaction of our amateur customers. We believe better testimonials could not be offered.



LANDSCAPE—With Festiva Maxima and Madame Bucquet. Awarded Third Prize in the Mohican Photograph Contest. Submitted by Charles M. Finley, Stour City, Iowa.



FESTIVA MAXIMA AND EUGENE VERDIER—Awarded One of Seven Prizes in
the Mohican Photograph Contest. Submitted by Miss Bessie N. Orvatt,
Milford, Connecticut.

MOHICAN PEONIES

Terms of the Mohican Photograph Contest

THE prizes offered are Mohican Peonies to be selected, in each case, by the successful contestants:

First Prize: \$50.00 worth of Mohican Peonies.
Second Prize: \$30.00 worth of Mohican Peonies.
Third Prize: \$15.00 worth of Mohican Peonies.
Seven other prizes, each valued at \$5.00.

Name and address must be plainly written in ink on the back of each photograph; also name of variety of Peony or Peonies shown.

The Peonies photographed must be grown from Mohican roots.

Pictures may be of gardens, plants or cut flowers.

There is no limit to size of photograph or number submitted by any one person.

Not more than one prize will be allotted to any one contestant.

Photographs must be in our hands by September first.

Any prints submitted may be used in our publications.

All prize-winning pictures will be reproduced with the names and addresses of the successful contestants.

Prints will be returned only on request.

Send no letter—just the photographs. Address: Mohican Peony Gardens, Reading, Pa.

Announcement of the awards of prizes will be made in our 1929 catalog.

Shipment of the prizes will be made in September by *prepaid* express. Winners may select the Peonies they most desire and we will do our best to supply just what they may ask for.

Plan Now to Head the List of Winners.



MOHICAN PEONIES

Purchase Your Peonies from True Peony Specialists

WITH us the Peony is the "whole thing." We grow Peonies and nothing else. We are thus specialists in a sense which possesses legitimate value and significance and the reasonableness of our suggestion, that you purchase your roots from true specialists, becomes apparent.

We have labored and studied and spent years of time and a great deal of money to keep our varieties true, and *we so guarantee them*; that is to say, while we are not infallible and mistakes will very occasionally occur, such mistakes are always due to errors in labelling or in shipping and not to mistakes in our varieties. For our fields are thoroughly "rogued" from end to end and we KNOW that there is not a single wrong plant in our entire acreage of Peonies.

Size and Quality

The rapidly growing interest in the modern Peony—a popular interest which has attained such proportions that it is not out of harmony to speak of the situation as a "boom in Peonies"—has brought so prominently to the front the question of size of roots sent out to customers that it is only second in importance to the question of true stock.

Unlike many growers, we do not take up a more or less mature plant and divide it to the very limit of its endurance. *Our divisions are always generous divisions, made with extraordinary care and skill.* When our roots are shipped they are in the prime of condition for transplanting.

Our Grade of Stock

Should you decide to favor us with your valued order, you will, we believe, be surprised at the quality of stock we send you. Our system of growing is such that we are able to send out plants that cannot fail to satisfy the most exacting buyer. The clump we deliver is heavy, vigorous, liberally grown quality stock that will—if properly planted—produce a very satisfactory amount of bloom the first year. All clumps which we ship





THERESE—A Two-Year Old. Awarded One of Seven Prizes in the Mohican Photograph Contest. Submitted by Mrs. Herbert L. Welch, Haines Landing, Maine.

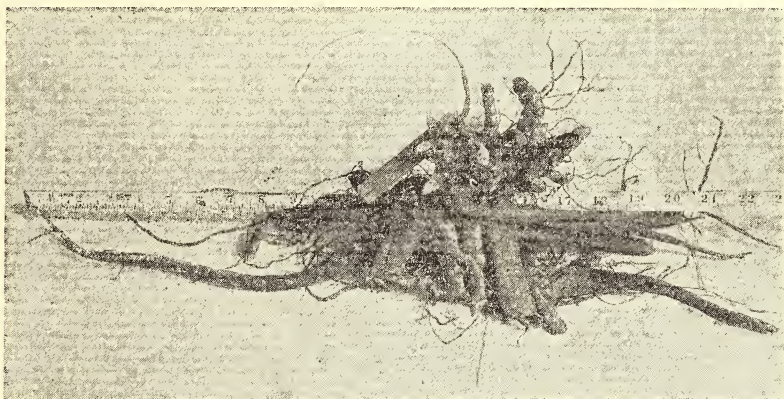


A SOUTHERN PLANTING OF EDULIS SUPERBA—Awarded One of Seven Prizes
in the Mohican Photograph Contest. Submitted by Mrs. W. D. Haden,
Charlottesville, Virginia.

MOHICAN PEONIES

have bloomed at least once in our gardens and should therefore reasonably be expected to bloom the first season for you.

In soliciting your patronage, therefore, we ask a careful consideration of the points we have made, especially in com-



paring our prices with those of other growers. We know that our rates, considering the grade of roots we offer, are, to say the least, as low as the same grade of true stock that can be had elsewhere.

Cut Flowers

Those who wish a reliable guide in the selection of varieties for the cut-flower business will find our Descriptive Chart on pages eighteen and nineteen of great help. Under the heading 'for cutting' a blank means the variety is not recommended as a good commercial cut flower; 'X' means the variety is quite satisfactory for general cut-flower purposes and 'XX' indicates the best for commercial cutting. By comparing these checks with the 'color', 'season' and 'fragrance' columns of the Descriptive Chart a very practical list can be made up to meet requirements.

We have cut-flower plantings in Pennsylvania and Virginia. Our experience in this phase of the business is available to customers about to engage in the cut-flower business. We invite correspondence on this subject.



MOHICAN PEONIES

What Kind of Peonies?

THERE are upwards of two thousand varieties of Peonies, and it is a fact—which no grower or nurseryman can honestly dispute—that hundreds of them are so nearly alike as to be practically identical. In any event, only an expert can distinguish the difference. If you send to certain worthy growers for a catalog or list you will be confronted with more or less accurate descriptions of perhaps from two to five hundred sorts. The average retail customer is confused and perplexed by this array. He wants a few of the very best—and that is just the want this catalog will fill.

Our List

Our list now consists of one hundred carefully selected sorts of Herbaceous Peonies. We are, and have been for years, growing several hundred varieties. The number and character of the varieties in our fields has been constantly changing and shifting as we have cast some out because not entirely worthy and selected new ones as they came into general cultivation. We deem our varieties the choicest and best and the most distinct of the many hundreds in cultivation. The points constantly kept in mind in making our selections have been size, perfection of form, fragrance, vigor of bloom, lasting quality of cut flowers and landscape effect. The entire range of form and color is covered absolutely and all of the exquisite and really worthy new things of French, British and American production have been added. If you do not find listed in this booklet a variety you think ought to be there, it is because a better one has displaced it or because it is practically identical with one listed.

Planting

For permanent planting Peonies should be set from three to four feet apart each way and left undisturbed indefinitely. When it is desired to intersperse Peonies among other hardy garden flowers, or at intervals along a border of shrubs, they should be planted in groups of from three to five, each group to be of one variety. In arranging a bed of Peonies of from fifteen to fifty roots—according to the space at command—we strongly urge the planting of one variety. Although sorts may be had that bloom, in theory, about the same time, the result is never



The Catalog Dilemma

MOHICAN PEONIES

satisfactory, for in fact they come straggling into bloom one after the other and the effect desired is never wholly gained. A bed of one fine sort is a magnificent sight.

Planting Season

The fall season is the only season in which the Peony can successfully be transplanted. To move Peonies at any other season than the months of September, October and November means a setback from which the roots sometimes do not recover for two years. Some general nurserymen will supply Peonies at any season of the year that they can be gotten out of the ground. But, when we sell you Peonies we want them to start right in to "work" for you from the beginning, without a setback through moving at the wrong season. We have faith that our methods will thus redound to our credit. We begin digging on September 1st and continue to fill orders as late in the year as the ground remains open.

Directions for Planting

Our customers are naturally interested in the proper care of their Peony plants and to meet the need of a reliable guide we have, for many years, sent free with every order our now famous BOOK OF DON'TS which, we believe, contains all the advice that is needed to raise Peonies. The few "Don'ts" added to the plant's natural inclination to grow regardless of conditions, makes the Peony a real delight. There are no keen disappointments, no severe losses of labor and love or time and money.

Following the receipt of our Book of Don'ts our customer receives the shipment of well packed, healthy roots. With the "Don'ts" to keep one from errors in planting and with reasonable care on the gardener's part, success is sure to follow.

Except to our customers, the Book of Don'ts is sold at ten cents per copy to cover part of the cost of printing and mailing.

When we revised and improved our "Don'ts" in 1925 we recommended as a Peony fertilizer only the use of bone meal and sheep manure, there being at the time no practical commercial fertilizer which we could recommend with confidence. Our Peony roots go to every state in the Union and to several foreign countries and, quite naturally, into many different soils. A plant food that will meet all conditions must contain all the elements needed for plant life.

We have at last found a product that we can recommend not only for Peonies but for general use in the garden and on lawns. It is a product of Swift and Company known as Vigoro. Its plant food value is so concentrated that a little goes a long way. It can be purchased, we are informed, in most cities. For the convenience of those who cannot purchase it locally or for those in large cities where the parking problem handicaps local shopping, we will ship Vigoro with Peony orders. We offer this service with the firm belief that the results will promote the popularity of the "Queen of Flowers" by assuring the successful growth of our hardy stock in the gardens of our customers.

For further details regarding Vigoro, see page 31.



MOHICAN PEONIES

Our Challenge Collection

WHAT our one hundred varieties are to the world of Peonies at large, our *Challenge Collection* is to our one hundred varieties. It represents our list in miniature. Its twenty-five varieties are the very cream of our gardens and cover the entire range of form, color and blooming season. The more unusual in color and shape, or those varieties requiring more expert care—in other words, Peonies which appeal rather to the connoisseur than to the average gardener—have not been included.

This Challenge Collection, originally planned as a guide to those who know little about Peonies and have not the time to study catalogs, has proven equally popular with those who know Peonies well and therefore recognize the choiceness of the varieties included. With this list of twenty-five as guide one cannot go wrong, whether he selects only one or two of them, or whether he buys the entire collection. A very large part of our gardens today is devoted to the growing of the Challenge Collection. Never do we include any variety in our Collection simply because we wish to get rid of it.

This collection may be purchased as a whole at a saving of 25% or it may be purchased, in two different years, by buying collection No. 2 and collection No. 4, at almost as great a saving.

Or the Challenge Collection may be had in three groups, one group a year if desired, by ordering at different times Collections 3, 4 and 5. The Challenge Collection is listed on page eleven.



A Pack of Joy



THE LANDSCAPE VALUE OF MOHICAN PEONIES—Awarded One of Seven Prizes
in the Mohican Photograph Contest, Submitted by F. C. Cave, Winnipeg,
Manitoba.



FROM THE CHALLENGE COLLECTION—Awarded One of Seven Prizes in the
Mohican Photograph Contest. Submitted by D. W. Morden, Pilot Mound,
Manitoba.



Our Challenge Collection

This is the group that is always sure to please. We used to think it could not be beaten—now we know it.

Under no circumstances will we accept orders for our Collections where any changes are requested. Additional varieties should be specified in the space provided on the order blank.

	Challenge Collection	No. 2	No. 3	No. 4	No. 5
Albert Crousse	x	x	x
Alexandriana	x	x
Alice de Julvecourt	x	x	x
Claire Dubois	x	x
Couronne d'Or	x	x	x
Edulis Superba	x	x	x
Felix Crousse	x	x	x
Festiva Maxima	x	x	x
Floral Treasure	x	x	x
Gloire de Charles Gombault	x	x	x
Jeanne d'Arc	x	x
Livingstone	x	x
Mme. Bucquet	x	x
Mme. de Verneville	x	x	x
Mme. Ducel	x	x
Mme. Emile Galle	x	x	x
Mme. Forel	x	x	x
Mme. Geissler	x	x
Marie Lemoine	x	x	x
Modeste Guerin	x	x	x
M. Dupont	x	x
M. Jules Elie	x	x	x
Sarah Bernhardt	x	x
Souvenir de l'Ex de Bordeaux	x	x
Triomphe de l'Ex de Lille	x	x	x
<hr/>					
Price on clumps					
at list.....	\$42.00	\$24.75	\$12.75	\$17.25	\$12.00
Collection price					
on clumps.....	31.50	19.30	10.20	13.50	10.00
Price on divisions					
at list.....	28.00	16.50	8.50	11.50	8.00
Collection price					
on divisions.....	21.00	12.90	6.80	9.20	7.00

Those who remit by June 30th save an additional 10%



Special Collections

If you could walk with me through fields of Peonies in bloom and point out those you like the best, ordering them on the spot as do visitors to our gardens, you would have blooming in your garden next spring the seven popular Peonies which we call

VISITORS' CHOICE:

Albert Crousse, late, light pink.
Felix Crousse, late mid-season, red.
Festiva Maxima, very early, white.
Madame Geissler, late mid-season, deep pink.
Marie Lemoine, late, ivory white.
Souvenir de l'Exposition de Bordeaux, mid-season, red.
Triomphe de l'Exposition de Lille, mid-season, light pink.

List price on clumps, \$10.50; **Collection price, \$8.40.**

List price on divisions, \$7.00; **Collection price, \$5.90.**

During the past year we have been making a thorough investigation, both through correspondence and by personal visits, of the growing of Peonies south of the Mason and Dixon line and are now ready to offer you the following DIXIE COLLECTION composed only of varieties which have been proven successful Southerners. Many other varieties listed in our catalog were found flourishing in southern gardens, but we have chosen a representative group that covers the entire color and season range. All of these "Dixies" are fragrant.

THE DIXIE COLLECTION:

Baroness Schroeder, mid-season, white.
Edulis Superba, very early, deep pink.
Felix Crousse, late mid-season, red.
Festiva Maxima, very early, white.
LaPerle, late mid-season, light pink.
Madame Bucquet, mid-season, deep red.
Madame Calot, early mid-season, pale pink.
Marguerite Gerard, late mid-season, light pink.
Petite Renee, mid-season, deep pink, single.

List price on clumps, \$15.75; **Collection price, \$12.40.**

List price on divisions, \$10.50; **Collection price, \$8.90.**

In offering the foregoing collection we wish to warn you that for southern planting a moisture-retaining soil is absolutely necessary, preferably a heavy loam. If your soil is sandy, a clay subsoil is very important.

MOHICAN PEONIES

Special Collections

If you seek only a beautiful blending of colors you will choose

THE COLOR QUADRANT:

Baroness Schroeder, mid-season, white.
Germaine Bigot, mid-season, light pink.
Lafayette, mid-season, deep pink.
M. Martin Cahuzac, early mid-season, darkest red.

List price on clumps, \$15.00; **Collection price, \$11.80.**
List price on divisions, \$10.00; **Collection price, \$8.50.**

It would be difficult to select from any garden of any flowers three more beautiful pinks than our little group of.

THREE PERFECT PINKS:

Mme. Auguste Dessert, early mid-season, light pink.
Marie Crousse, mid-season, light pink.
Therese, early, light pink.

List price on clumps, \$12.75; **Collection price, \$10.20.**
List price on divisions, \$8.50; **Collection price, \$6.40.**

The harmony of a sextet of beauty is always inspiring and if you seek a wealth of color you will be delighted with

THE SEXTET FROM MOHICAN:

Aurore, late, tri-color.
Coquelin, early, deep pink.
La Tendresse, early mid-season, white.
M. Boucharlat Aine, late mid-season, light pink.
Pierre Duchartre, late, light pink.
Souvenir de l'Exposition de Bordeaux, mid-season, red.

List price on clumps, \$10.50; **Collection price, \$8.40.**
List price on divisions, \$7.00; **Collection price, \$5.90.**

Anyone desiring a touch of glorious red, bordered with rose and white, cannot make a mistake in selecting the well-balanced group which is called

THE PENTAGON:

Avalanche, mid-season, white.
Eugene Reignoux, early mid-season, deep pink.
Felix Crousse, late mid-season, red.
Madame Calot, early, light pink.
Marie Lemoine, late, ivory white.

List price on clumps, \$7.50; **Collection price, \$5.90.**
List price on divisions, \$5.00; **Collection price, \$4.25.**




MOHICAN PEONIES

Read These Pages Before Ordering

THIS CATALOG IS FOR ORDERING IN 1928 ONLY. If not up to date send for our latest catalog and thus avoid delays.

USE THE ORDER BLANK—Write distinctly in the space provided for all necessary information.

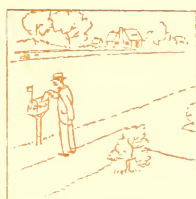
REMITTANCE must be made payable to Mohican Peony Gardens and may be by check, bank draft, cash in registered letter or Express or Post Office Money Order on Reading, Pa. **FOREIGN PATRONS** must ascertain the correct amount of exchange and add it to their checks, or else remit by Postal Money Order or New York Bank Draft.

QUANTITY DISCOUNT is allowed only when full remittance accompanies order and in no case on the collections offered, according to the following schedule:

Orders amounting to	\$ 15.00—	5% off
“ “ “	30.00—	10% off
“ “ “	50.00—	15% off
“ “ “	100.00—	20% off

We do not fill orders of less than \$2.00

SPRING DISCOUNT—Long experience has taught us that it is extremely unwise to transplant Peonies in the spring and for the best interests of our customers,



Easy to Order



Read These Pages Before Ordering

and at a considerable sacrifice to ourselves, we insist on fall shipments only.

It is often more convenient for our customers, however, to order in the spring and we therefore offer a special inducement of a Ten Per Cent Discount on all orders accompanied by remittance and mailed us not later than June 30th. This discount is given in addition to the quantity discounts named above.

TERMS, cash with order unless special terms have been previously arranged. Attention is again called to the fact that the discounts shown on these pages are allowed only when full remittance accompanies order. No shipments will be made C. O. D.

TRANSPORTATION is always express or freight. Shipment will be made by freight only on special request. Since the roots must be shipped damp, they cannot be sent by parcel post.

Requests for separate shipments on one order cannot be granted, unless bulk requires the use of more than one shipping case.

FINANCIAL REFERENCES:

Sinking Spring Bank, Sinking Spring, Pa.
Pennsylvania Trust Company, Reading, Pa.

**DO NOT FORGET TO ADD VIGORO TO
YOUR ORDER BLANK IF YOU WISH
IT INCLUDED IN YOUR SHIPMENT.**



Types of Bloom

Paeonia albiflora, or *P. Chinensis*, as it is more commonly catalogued, has by the American Peony Society been divided into eight types as follows:



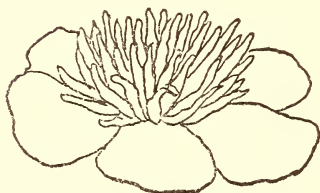
Single

ANEMONE. This type is a step further in the process of doubling, with the stamens all transformed into short narrow petals, forming a round cushion in the center of the flower.

SINGLE. Those with a single row of wide guards and a center of yellow pollen-bearing stamens.



Anemone



Japanese

CROWN. In this type wide petals are developed in the center of the flower, forming a high crown with the narrow, short petals forming a ring or collar around it. Often the crown and guards are one color, and the collar another or lighter shade.



Crown

Types of Bloom



Semi-double

SEMI-DOUBLE. Those with several rows of wide petals and a center of stamens and partially transformed petaloids. Many of the reds are of this type.

SEMI-ROSE. Flowers in which the petals are all uniformly wide, but are loosely built, with a few pollen-bearing stamens visible or nearly concealed.



Semi-rose



Rose

ROSE. In these the process of doubling is completed, all stamens fully transformed into evenly arranged wide petaloids, similar to the guards, forming a perfect rose-shaped bloom.

BOMB. The next step is this type in which all the center petals are uniformly wide approaching the guards, but distinctly differentiated from them, forming a globe-shaped center without collar or crown.



Bomb

MOHICAN PEONIES

Descriptive Chart

Color	Fra- grance	Season	Variety	Form	Vigor	Size	For Cut- ting
Deep Red	...	Early	Adolphe Rousseau	Semi-double	X	XX	...
Light Pink	X	Late	Albert Crousse	Bomb	XX	XX	X
White	X	Early-mid.	Albiflora	Single	X	XX	...
Light Pink	X	Early	Alexandriana	Rose	XX	XX	X
Tri-color	X	Early-mid.	Alice de Julvecourt	Crown	XX	X	X
Cream-white	...	Late-mid.	Alsace Lorraine	Semi-rose	X	XX	...
Light Pink	X	Midseason	Asa Gray	Semi-rose	X	X	XX
Tri-color	X	Midseason	Aurore	Semi-rose	X	X	XX
White	X	Midseason	Avalanche	Crown	XX	XX	XX
White	X	Midseason	Baroness Schroeder	Rose	XX	XX	XX
White	X	Early-mid.	Boule de Neige	Semi-rose	XX	X	XX
Yellow							
& White	X	Very early	Candidissima	Rose	XX	X	...
Red	XX	Late-mid.	Charles Verdier	Rose	XX	X	...
Deep Pink	X	Midseason	Claire Dubois	Rose	XX	XX	X
Pale Pink	...	Midseason	Clio	Single	XX	X	...
Red	X	Late	Constant Devred	Rose	XX	XX	X
Deep Pink	...	Very early	Coquelin	Semi-double	X	X	...
Yellow							
& White	XX	Late	Couronne d'Or	Semi-rose	XX	XX	XX
Light Pink	X	Very late	Dorchester	Rose	XX	XX	X
Yellow							
& White	X	Early	Duchess de Nemours	Crown	XX	X	XX
White	X	Late-mid	Duke of Wellington	Bomb	XX	XX	XX
Deep Pink	XX	Very early	Eduis Superba	Crown	XX	XX	XX
Light Pink	...	Midseason	Edwin C. Shaw	Rose	X	X	...
Red	...	Late-mid.	Emperor Nicholas	Bomb	X	X	...
Deep Pink	...	Early-mid.	Eugene Reignoux	Semi-double	X	XX	...
Light Pink	XX	Late	Eugene Verdier	Rose	XX	XX	...
Light Pink	X	Midseason	Eugenie Verdier	Semi-rose	X	XX	XX
Red	X	Midseason	Felix Crousse	Bomb	XX	XX	XX
White	X	Very early	Festiva Maxima	Rose	XX	XX	XX
Light Pink	X	Midseason	Floral Treasure	Rose	XX	X	XX
Light Pink	X	Midseason	Germaine Bigot	Crown	X	XX	X
Tri-color	X	Midseason	Gloire de C. Gombault	Crown	XX	XX	XX
Light Pink	XX	Very late	Grandiflora	Rose	XX	XX	XX
White	X	Early	Grand. Nivea Plena	Rose	X	X	X
Tri-color	X	Midseason	Jeanne d'Arc	Crown	XX	X	...
Light Pink	X	Early	Judge Berry	Semi-rose	X	XX	...
Red	...	Midseason	Karl Rosefeld	Semi-rose	XX	XX	XX
White	X	Early-mid.	Kelway's Glorious	Rose	X	X	...
Pale Pink	XX	Early	Lady Alexandra Duff	Semi-double	XX	XX	X
Deep Pink	XX	Midseason	Lafayette	Rose	X	XX	XX
Light Pink	XX	Midseason	Lamartine	Rose	X	X	X
Light Pink	X	Late-mid	La Perle	Rose	X	X	XX
Cream-white	XX	Midseason	La Rosiere	Semi-double	X	XX	XX
White	X	Early-mid.	La Tendresse	Rose	XX	XX	X
Light Pink	X	Late-mid.	La Tulipe	Semi-rose	X	X	X
White	XX	Midseason	Le Cygne	Rose	XX	XX	XX
Light Pink	...	Very late	Livingstone	Rose	XX	XX	X
Red	...	Midseason	Longfellow	Semi-rose	X	X	XX
Light Pink	X	Early-mid.	Mme. Auguste Dessert	Semi-rose	XX	XX	X
Deep Red	X	Midseason	Mme. Bucquet	Semi-rose	X	X	X

MOHICAN PEONIES

Descriptive Chart

Color	Fra-grance	Season	Variety	Form	Vigor	Size	For Cutting
Pale Pink	X	Early-mid.	Mme. Calot	Rose	XX	XX	XX
Light Pink	X	Late	Mme. Camille Bancel	Rose	XX	X	X
White	X	Late-mid.	Mme. Crousse	Crown	XX	XX	XX
Light Pink	X	Late	Mme. de Galhau	Rose	XX	X	X
Tri-color	XX	Midseason	Mme. de Vatry	Crown	X	X	XX
White	XX	Early	Mme. de Verneville	Bomb	XX	XX	XX
Deep Pink	X	Early-mid.	Mme. Ducl	Bomb	XX	XX	XX
Light Pink	XX	Late-mid.	Mme. Emile Galle	Rose	XX	X	X
White	XX	Midseason	Mme. Emile Lemoine	Semi-rose	XX	XX	XX
Deep Pink	X	Late-mid.	Mme. Forel	Rose	X	XX	...
Deep Pink	X	Late-mid.	Mme. Geissler	Rose	XX	XX	XX
Light Pink	X	Midseason	Mlle. Rousseau	Semi-rose	XX	XX	X
White	XX	Midseason	Marcelle Dessert	Crown	X	XX	X
Red	...	Late	Marechal Vaillant	Rose	X	X	...
Light Pink	X	Late-mid.	Marguerite Gerard	Semi-rose	XX	XX	X
Light Pink	X	Midseason	Marie Crousse	Bomb	XX	XX	X
White	XX	Midseason	Marie Jacquin	Single	X	X	...
Ivory White	X	Late	Marie Lemoine	Rose	XX	XX	XX
Red	...	Midseason	Mary Brand	Semi-rose	X	X	XX
Light Pink	X	Late	Mathilde de Roseneck	Rose	XX	XX	X
Red	...	Midseason	Mikado	Japanese	X	X	X
Pale Pink	...	Late	Milton Hill	Rose	XX	XX	XX
Light Pink	X	Late	Modele de Perfection	Rose	X	X	X
Deep Pink	X	Midseason	Modeste Guerin	Bomb	XX	XX	X
Light Pink	X	Late-mid.	M. Boucharlat Aine	Semi-rose	XX	XX	...
Ivory White	X	Late-mid.	M. Dupont	Semi-rose	XX	XX	XX
Deep Pink	XX	Early	M. Jules Elie	Bomb	XX	XX	XX
Darkest Red	...	Early-mid.	M. Martin Cahuzac	Semi-rose	XX	X	X
Light Pink	X	Early-mid.	Octavie Demay	Crown	XX	XX	XX
Deep Pink	...	Midseason	Petite Renee	Single	XX	X	...
Red	XX	Midseason	Philippe Rivoire	Rose	X	X	...
Light Pink	X	Very late	Pierre Duchartre	Rose	X	X	...
Light Pink	XX	Late	President Wilson	Rose	X	X	XX
Pale Yellow	XX	Midseason	Primevere	Bomb	X	X	X
Light Pink	X	Midseason	Reine Hortense	Semi-rose	X	XX	XX
Red	XX	Very early	Richard Carvel	Bomb	XX	XX	XX
Light Pink	X	Late-mid.	Sarah Bernhardt	Semi-rose	XX	XX	XX
Light Pink	X	Early	Simonne Chevalier	Crown	XX	XX	XX
Cream White	X	Midseason	Solange	Rose	XX	XX	XX
Pale Yellow	X	Midseason	Solfatare	Bomb	X	X	X
Red	...	Midseason	Souv. l'Ex. Bordeaux	Bomb	XX	X	...
Deep Pink	X	Late-mid.	Souv. l'Ex. Universelle	Semi-rose	X	X	XX
Deep Pink	...	Midseason	Souv. de Louis Bigot	Rose	X	X	XX
Light Pink	X	Early	Therese	Rose	XX	XX	XX
Light Pink	...	Midseason	Tokio	Japanese	XX	X	...
Light Pink	X	Late-mid.	Tourangelle	Rose	X	XX	XX
Light Pink	X	Midseason	Triomphe l'Ex. de Lille	Rose	XX	XX	XX
Light Pink	X	Very early	Umbellata Rosea	Rose	XX	X	...
Light Pink	X	Midseason	Van Dyck	Crown	XX	X	...
Deep Pink	...	Midseason	Walter Faxon	Rose	X	XX	X

MOHICAN PEONIES

The Descriptions Used in This Catalog

WE have been trying to get away from the "stock" descriptions so often used in flower catalogs and to give our readers in a few words a real picture of each variety. The descriptions in this present catalog have for the most part been made up from garden notes jotted down last spring as the different varieties were in bloom, and the Ridgway color notations were arrived at by actual comparison of the flower petal with the Ridgway chart.*

We have tried to restrain our enthusiasm from the too free use of superlatives and such general adjectives as 'fine', 'enormous', 'beautiful' and so on, but please do not forget that every Peony on our list is a favorite with us and it is hard to stick only to botanical details in introducing them to you.

One result we should like to obtain from our descriptive price list is to tempt your curiosity to order some of the less widely known varieties—we do not mean the new, rare and very expensive sorts, but some of the old French originations, such as Madame Camile Bancel, which are fully as beautiful as their more famous cousins but known only to a few. It has always been a mystery to us why gardeners want only the same varieties that their neighbors are growing and that can be bought anywhere. Is it because only the few are bitten by collector's mania and realize the joy of discovering unfamiliar beauties to introduce to their acquaintance?

May we remind you that every variety on the Mohican list is there because it is beautiful, sturdy and free blooming; we carry no "dead wood". We have honestly tried to give you completely accurate descriptions and when we say, for instance, 'exquisite' we really mean that the particular variety is exquisite—we are not simply using a word to fill out the type line. So, too, when we say 'enormous blooms' we mean enormous as compared to the average Peony and not as compared to a daisy. Therefore you run no risk of disappointment in ordering any one of our Peonies whose characteristics interest you, even though you have never seen it in any one else's garden. Why not be a Peony explorer?

**Ridgway's Color Standards and Nomenclature may be obtained through us or through your book dealer at a price of \$20.00.*



Tillers of the Soil

MOHICAN PEONIES

Descriptive Price List

IN parenthesis we give the name of the originator and date of introduction, followed by American Peony Society Symposium rating. Color names in italics are from Ridgway's Color Standards and Nomenclature.

ADOLPHE ROUSSEAU (Dessert & Mechin 1890; 8.5). Very large, dark, *pomegranate purple* with metallic reflex. Classed as semi-double but on old, established plants, which grow very tall, the flowers vary in form from almost single to semi-double. Among the earliest reds, its striking appearance makes it very much in demand. Clumps, \$3.75. Divisions, \$2.50.

ALBERT CROUSSE (Crousse 1893; 8.6). One of the most striking and perhaps the most distinct Peony in existence, there being nothing else of just the same form and character. Immense bloom, very full and compact; small, imbricated and very dense petalage from the outside to the very heart of the flower. Flesh pink, lightly reflected lilac, with centre shaded clear pink. In color and form like an enormous pink carnation. Very sweet fragrance. Tall, erect in growth and a late bloomer. A superb and an extraordinary Peony. Clumps, \$1.50. Divisions, \$1.00.

ALBIFLORA (Dessert 1902; 8.4). A large, pure white *single* Peony with prominent golden stamens. Its fragrant flowers growing in clusters on strong, stiff stems and its beautiful foliage make it especially desirable for landscape effect. Clumps, \$3.75. Divisions, \$2.50.

ALEXANDRIANA (Calot 1856; 7.1). Very large and full double *rose pink* with silver edges. An unusually strong grower, with great quantities of delightfully fragrant flowers on strong upright stems. A very fine early cut-flower sort. In spite of its comparatively low price, one of the most valuable Peonies we have. Clumps, \$1.50. Divisions, \$1.00.

ALICE DE JULVECOURT (Pele 1857; 7.2). Very double, perfectly built fragrant flower; soft pink, delicately shaded rose and cream, with central petals beautifully edged with red. An exquisite combination of coloring not easily described. A very free and rather early bloomer. (We consider this one of the very finest Peonies of the light varieties in cultivation). Clumps, \$1.50. Divisions, \$1.00.

ALSACE LORRAINE (Lemoine 1906; 8.8). This tall and vigorous plant carries erectly large, white semi-rose type flowers which bloom in late mid-season. The white petals are pointed and reflect the light of the stamens, suggesting the water lily. Divisions only, \$3.00.

ASA GRAY (Crousse 1886; 8.1). See illustration facing page 28. Immense, massive and compact bloom; imbricated like a rose; very full and fine of form. *Pale rose pink* very delicately dotted with carmine. An imposing and extraordinary flower and very fragrant. Clumps, \$3.00. Divisions, \$2.00.

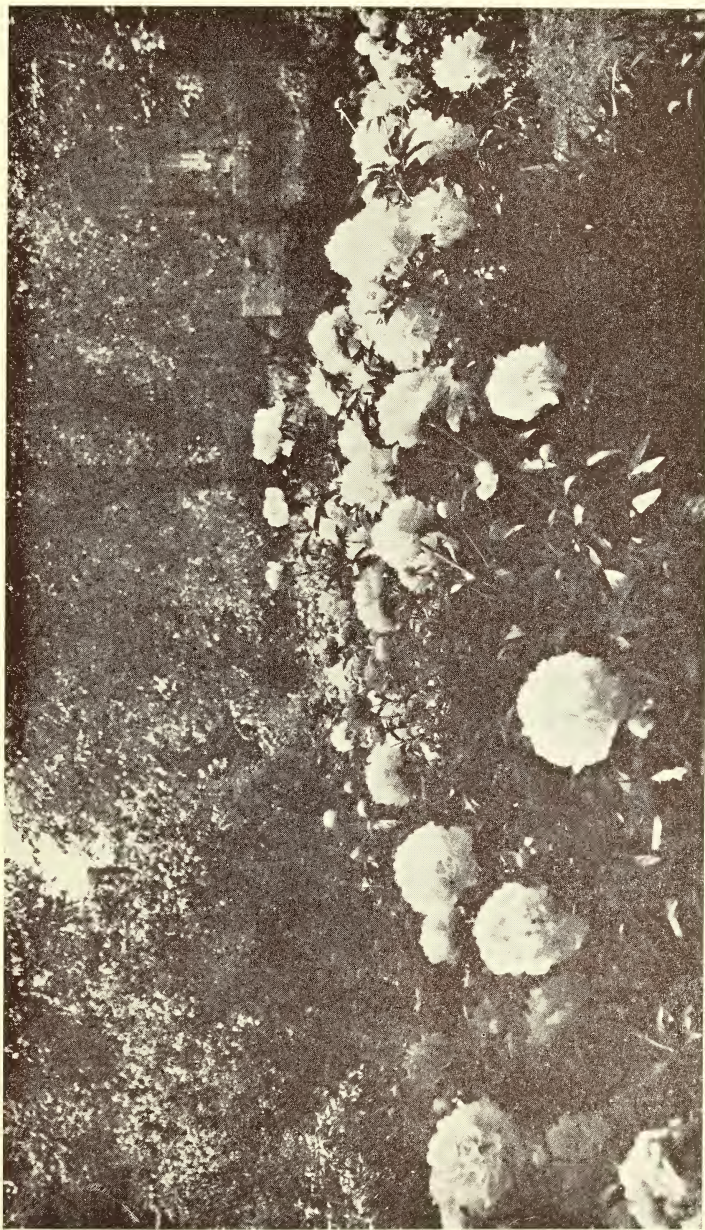
AUORE (Dessert 1904; 8.0). A fragrant cup-shaped flesh-pink flower with petals loosely arranged in semi-rose form. Prominent yellow stamens add a cheerful



Two Inches Under

MOHICAN PEONIES

- light to the collar petals, while flecks of crimson are seen on the wide center petals. It opens in mid-season on a medium-tall plant; is often employed for landscape effects. Clumps, \$1.50. Divisions, \$1.00.
- AVALANCHE** (Crousse 1886; 8.7). Large, glorious bloom of perfect form; fine, milk-white; creamy center. Absolutely identical with *Albatre*. The fragrant flowers bloom abundantly in late mid-season and are fine for cutting. Clumps, \$1.50. Divisions, \$1.00.
- BARONESS SCHROEDER** (Kelway 1889; 9.0). Flesh changing to white, and a free bloomer. Exceedingly rare. One of the finest old England has produced. Clumps, \$2.25. Divisions, \$1.50.
- BOULE DE NEIGE** (Calot 1867; 8.0). Would you like to prolong the period of bloom of *Festiva Maxima*—and keep it sweetly fragrant at the same time? If so, plant this strong grower of large, white, crimson-flecked flowers; often used for landscape work and always a satisfactory cut flower. Clumps, \$1.50. Divisions, \$1.00.
- CANDIDISSIMA** (Calot 1856; 7.1). This sturdy white races with *Festiva Maxima* for the honor of being the first to bloom. *Candidissima* usually wins with its beautiful big ball of fragrance. It is the full double-rose type with creamy white guard petals and a sulphur yellow center, delicately tinted flesh with a light green touch to the carpelodes. Clumps, \$1.50. Divisions, \$1.00.
- CHARLES VERDIER** ((Origin unknown). Wonderfully fragrant are the very dark rose-red flowers which bloom abundantly on a medium-height compact plant. Because of its unusual color and its fragrance it requires no courage to persist in offering this Peony although it is unrated. The uncertainty of its origin makes it the more interesting. Clumps, \$3.00. Divisions, \$2.00.
- CLAIRE DUBOIS** (Crousse 1886; 8.7). One of the very largest Peonies in cultivation. Immense, solid, globular. Center very full, convex, and tufted; petals incurved and fringed. Exquisite clear, deep violet-rose with a satiny reflex. Very tall and a rare bloomer. A superb impressive flower. Clumps, \$1.50. Divisions, \$1.00.
- CLIO** (Peterson; 6.5). Large, early, graceful, single, with petals displaying every shade of pink. The strong, well-formed plants with flowers in clusters are very decorative. Clumps, \$2.25. Divisions, \$1.50.
- CONSTANT DEVRED** (Calot 1868; 7.5). This striking, rose-type, red is especially desirable because it is the last of the reds to bloom. The full, compact carmine-red flowers are held erect on the long, stiff stems of a vigorous plant. These characteristics make it a valuable cut flower. Clumps, \$1.50. Divisions, \$1.00.
- COQUELIN** (Dessert 1905; 7.2). See illustration facing page 29. One of the very earliest varieties to bloom, providing an abundance of color early in the season. The large, cup-shaped flower of the semi-double type has imbricated petals of brilliant tyrian-rose, tipped with silver. Clumps, \$1.50. Divisions, \$1.00.
- COURONNE D'OR** (Calot 1873; 8.1). See illustration facing page 23. A late, exceedingly fragrant, ball-shaped bloom. Snowy white with yellowish reflex and carmine edges on center petals. Incomparably lovely and one of the very choicest and best Peonies in cultivation. Clumps, \$1.50. Divisions, \$1.00.
- DORCHESTER** (Richardson 1870; 7.7). Beautiful and delicate salmon flesh; a well-built and striking variety. Rather a dwarf grower, but blooms come on strong, upright stems. Very late, coming in



EUGENE VERDIER AND FESTIVA MAXIMA—Awarded One of Seven Prizes in the Mohican Photograph Contest. Submitted by Miss Belle I. Johnston, Clayton, New York.



COURONNE D'OR, LIVINGSTONE, MARIE LEMOINE AND MONSIEUR DUPONT—
Awarded One of Seven Prizes in the Mohican Photograph Contest. Submitted by Miss Mary L. Brunner, Campbelltown, Pennsylvania.

MOHICAN PEONIES

- after most other varieties have passed. Clumps, \$1.50. Divisions, \$1.00.
- DUCHESS DE NEMOURS** (Calot 1856; 8.1). An early white of the crown type opening in a globular, cupped form that is very distinct. The color is clear white, with a collar of sulphur white, and a greenish reflex at the center that is most refreshing. It is a vigorous grower, of medium height, a free bloomer, and fragrant. A useful variety, either for the garden or for commercial cutting. This is another one of the older varieties that is outstanding, even when compared with all the newer and more expensive introductions. Clumps, \$1.50. Divisions, \$1.00.
- DUKE OF WELLINGTON** (Calot 1859; 7.8). A sturdy, tall-growing plant that supports its enormous white flowers with graceful ease. The fragrant bomb-shaped flowers have broad guard petals of pure white surrounding a spherical center of delicate yellowish tinge. It is so well constructed that it makes an excellent show flower, comparing favorably with the very best of the whites. A reliable mid-season cut flower. Clumps, \$1.50. Divisions, \$1.00.
- EDULIS SUPERBA** (Lemoine 1824; 7.6). See illustration facing page 7. Very beautiful, large, full and well-formed bloom, with good culture measuring from seven to eight inches across. Brilliant *deep rose pink* with silvery reflex. A vigorous grower producing quantities of very fragrant flowers on strong stems. In this climate it rarely fails to be ready on Memorial Day. It is really one of the most valuable of Peonies because of its extreme earliness, together with the fact that it leads the field in fragrance, in color, in vigor and in durability as a cut flower. Clumps, \$1.50. Divisions, \$1.00.
- EDWIN C. SHAW** (ThurLOW 1919; 9.1). A clear, shell pink; outer petals broad and rounded, sometimes slightly edged crimson. The petals are nearly the same length except the extreme center petals which are short. This gives a very pretty cup-shape and the general effect is one of elegance of form. One of ThurLOW's finest seedlings. Divisions only, \$20.00.
- EMPEROR NICHOLAS** (Crousse 1897; 7.1). This vigorous bomb-shaped red is one of the most distinct varieties in our Gardens. The brilliance of this dark *amaranth purple* Peony commands the admiration of those who like colorful flowers. Although not of the same tone nor the same shape it serves as a delightful follower for the justly popular Felix Crousse, blooming after Felix Crousse has "gone by". We of Mohican Gardens are very fond of Emperor Nicholas. Clumps, \$2.25. Divisions, \$1.50.
- EUGENE REIGNOUX** (Dessert 1905; 7.3). This large, strong-growing variety produces, during mid-season, a profusion of cup-shaped semi-double flowers of a *deep rose pink*. Clumps, \$1.50. Divisions, \$1.00.
- EUGENE VERDIER** (Calot 1864; 8.3). See illustrations facing pages 5 and 22. Very large, compact globular bloom of blush pink, deeper toward the center. Vigorous, profuse and delicately fragrant. Excellent for cutting. This variety is one of the latest to bloom and is at its best in a cold climate. Clumps, \$3.00. Divisions, \$2.00.
- EUGENIE VERDIER** (Calot 1864; 8.6). Here is a most desirable, fragrant mid-season pink. It is an excellent cut flower, delicately hydrangea colored, and of fine texture. The outer petals of this semi-rose type are of lighter shade than the center. Its large size

MOHICAN PEONIES

- and delicate coloring make it an excellent show flower. Divisions only, \$1.50.
- FELIX CROUSSE** (Crousse 1881; 8.4). Enormous, massive, compact, and typical bomb-shaped red, with ruby-flamed center. Fairly dazzling in the brilliancy of its distinct color. It is in fact, the greatest red Peony in cultivation, and should be included in every collection. Free mid-season bloomer, and quite fragrant. Very similar but decidedly superior to Augustin d'Hour, which variety we do not offer for that reason. Clumps, \$1.50. Divisions, \$1.00.
- FESTIVA MAXIMA** (Mieliez 1851; 9.3). See illustrations facing pages 4, 5 and 22. Very large and full, pure white flower, with few center petals tipped with blood-red spots. A vigorous grower, with massive foliage and long stiff stems. Fragrant, early and free bloomer. Clumps, \$1.50. Divisions, \$1.00.
- FLORAL TREASURE** (Rosefield 1900; 7.5). The large rose-type flowers are *flesh colored* in the center with *pale rhodonite pink* guards. A vigorous plant, a wonderful late mid-season bloomer, an excellent cut flower. An American production of very great merit and a splendid "hemisphere of fragrance". Clumps, \$1.50. Divisions, \$1.00.
- GERMAINE BIGOT** (Dessert 1902; 8.5). One of Dessert's finest triumphs. The flowers are large and compact, of the crown type. The color is *cameo pink*, with lighter flesh colored tints in the center; the large guards are splashed with crimson. The plant produces an abundance of flowers, in clusters, during midseason. Clumps, \$2.25. Divisions, \$1.50.
- GLOIRE DE CHARLES GOMBAULT** (Gombault 1866; 7.9). See illustration facing page 30. This Peony is distinctly first and foremost of the multi-color varieties. It easily surpasses them all, and standing upon its own merits we consider it one of the most strikingly beautiful varieties on our list. Large, globular flowers, extra dense and compact. Deep fleshy pink collar; narrower center petals of salmon and apricot, touched here and there with bright carmine. Fragrant mid-season bloomer on extra long stout stems. Ideal for cut flowers. "Simply delicious" is the way a visitor to our grounds described this variety. Clumps, \$1.50. Divisions, \$1.00.
- GRANDIFLORA** (Richardson 1883; 8.8). Exquisite flesh pink, with somewhat lighter shades in center. One of the very largest Peonies, and the latest pink to bloom. Fragrant. Clumps, \$2.25. Divisions, \$1.50.
- GRANDIFLORA NIVEA PLENA** (Lemoine 1824; 8.1). A very early and superb Peony. Large and full; pure white collar; center, shaded salmon and sulphur. Fine. Divisions only, \$1.50.
- JEANNE D'ARC** (Calot 1858; 7.9). A glorious flower—a very "splendor of fragrant loveliness". The collar is yellow; the guards *pale rhodonite pink* and the full, high center a delicate pink with occasional carmine spots. Exquisite and, with the exception of Gloire de Charles Gombault, the very finest tri-color yet produced. Free, mid-season bloomer. Clumps, \$1.50. Divisions, \$1.00.
- JUDGE BERRY** (Brand 1907; 8.6). This early pink, of semi-rose type, opens its long petals to an immense disc of fragrant loveliness. Even young plants blossom freely on the medium tall stems. Divisions only, \$8.00.
- KARL ROSEFIELD** (Rosefield 1908; 8.8). Rich, clear, glowing crimson. Semi-rose type flower of fine form.



Use Vigoro

MOHICAN PEONIES

Full double, large and solidly built. Strong erect grower and good sure bloomer. Very good as a keeper when cut and has no superior as a cut-flower red. One of the very best reds for any purpose. Divisions only, \$2.00.

KELWAY'S GLORIOUS (Kelway 1909; 9.8). It is generally agreed that only *Le Cygne*, the finest of them all, exceeds the beauty of Kelway's Glorious. The white flower opens in mid-season to a large, full, double rose-type of wonderful fragrance. Unless to be used for cutting, the plant should not be disbudded because of the prolonged season resulting from the opening of the laterals. An excellent Peony for landscape effect. Divisions only, \$18.00.

LADY ALEXANDRA DUFF (Kelway 1902; 9.1). Unusual, large, flat, loosely assembled flowers with petals irregular in size and shape. Delicate pink guard petals. Very pale pink, almost white, are the other petals in this cup-shaped flower. Yellow stamens repose boldly within the cup. To see it is to test its delicious fragrance. Divisions only, \$4.00.

LAFAYETTE (Dessert 1904; 7.8). The large, fragrant flowers are unique in color, being *Tyrian pink* with touches of heliotrope and a delicate tinting of cerise in the reflex. The petals are beautifully fringed. The flowers bloom in mid-season and last well for cutting. Lafayette is a very pleasing and desirable flower. Clumps, \$3.00. Divisions, \$2.00.

LAMARTINE (Calot 1860; 8.3). This is an enormous compact bloom of the rose type. It is *rose-pink* and possesses a delightful fragrance. Blooming freely in mid-season, it is a fine variety for garden display and has good keeping qualities. Clumps, \$2.25. Divisions, \$1.50.

LA PERLE (Crousse 1885; 8.5). This is indeed a gem, well named by its famous originator. Blush white, with a touch of lilac-pink on the edges of the petals, which fade to almost pure white when fully open. A profusion of fragrant, rose-type, blooms seen near the end of the season tempts the visitor to find room for this delightful Peony. Clumps, \$2.25. Divisions, \$1.50.

LA ROSIERE (Crousse 1888; 8.3). This is not a yellow flower but its center of golden yellow stamens surrounded by cream white tempts the use of "yellow" for accurate description. In form and effect it resembles a large tea rose with broad, imbricated petals. It is the semi-rose type. The very fragrant flowers open in mid-season, growing in profuse clusters and creating a delightful effect if not disbudded. Very satisfactory as a cut flower. Clumps, \$2.25. Divisions, \$1.50.

LA TENDRESSE (Crousse 1896; 8.1). Very full, immense flowers with thick, wax-like petals. Color creamy-white changing to pure white, flecked with crimson. Slightly fragrant, blooming in clusters during early mid-season. Clumps, \$1.50. Divisions, \$1.00.

LA TULIPE (Calot 1872; 7.5). See illustration facing page 1. This is the Peony that tulips strive to resemble. It is a *pale rose pink* with *flesh* tints and, on the center petals, touches of red. The fragrant blooms open late, on tall sturdy stems. It is a good cut flower. Clumps, \$1.50. Divisions, \$1.00.

LE CYGNE (Lemoine 1907; 9.9). People who have seen *Le Cygne* never have to ask why it is rated the highest of all Peonies. It is a perfect flower, perfect in its whiteness, its form, its texture, its fragrance, its



MOHICAN PEONIES

- size, and above all vigorous and requiring only the same care that is given to any ordinary plant. Divisions only, \$12.00.
- LIVINGSTONE** (Crousse 1879; 8.1). See illustration facing page 23. Enormous, very massive, imbricated and compact bloom. Pale lilac-rose with silver tips; center petals flecked with carmine. A vigorous grower and one of the latest to bloom. Long, strong stems. Exquisite in the bud and a great keeper but lacking in fragrance. A Peony of the highest class. Clumps, \$1.50. Divisions, \$1.00.
- LONGFELLOW** (Brand 1907; 9.0). The rich red of this gorgeous Peony always assures it a prominent place in any garden and is sure to win the affections of those who love red Peonies. The brilliant cherry-red color is not affected by sunshine as are some of the other red varieties. Divisions only, \$6.00.
- MADAME AUGUSTE DESSERT** (Dessert 1899; 8.6). Large, imbricated, cup-shaped flower, perfect in form with rounded petals of *pale rose pink* tinged with clear carmine. Holds itself together neatly and with "sassy" dignity. The fragrant flowers bloom freely, during early mid-season. Clumps, \$2.25. Divisions, \$1.50.
- MADAME BUCQUET** (Dessert 1888; 7.3). See illustration facing page 4. A magnificent flower—a striking and remarkable dark peony, and one of the best of the black sorts. Velvety black *amaranth purple* with garnet reflections. Medium in size, fragrant, strong grower, and free bloomer. Indispensable. Clumps, \$1.50. Divisions, \$1.00.
- MADAME CALOT** (Mieliez 1856; 8.1). Large, well-built rose type flower. Pale pink with darker center; collar tinged with silver. Prominent carpels add a touch of pink. The fragrant flowers bloom in early mid-season. Clumps, \$1.50. Divisions, \$1.00.
- MADAME CAMILLE BANCEL** (Crousse 1897; 7.9). This fragrant light pink has large well-formed flowers which are very satisfactory for cutting or for garden decoration. The distinctive flowers, of rose-type, open late in the season. Clumps, \$1.50. Divisions, \$1.00.
- MADAME CROUSSE** (Calot 1866; 7.9). Enormous, very double, late-blooming, paper white, slightly edged in center with carmine. Very fragrant and one of the best whites we have for cut flowers: Always distinct in a garden of many Peonies. Clumps, \$1.50. Divisions, \$1.00.
- MADAME DE GALHAU** (Crousse 1883; 7.5). This is perhaps the loveliest of the late bloomers. The flower is a large compact pale lilac-rose with rose-white guards, rather different and therefore worthy of more attention. Its lateness and its fragrance add to its charm. Clumps, \$1.50. Divisions, \$1.00.
- MADAME DE VATRY** (Guerin 1863; 7.7). We plead with our customers to give this lovely Peony a trial. Its fragrance is unusually attractive. Our 1927 catalog says of it, "Splendid cut-flower"; our garden note made at blooming time last summer adds, "Sure is!" Its three colors consist of cream-white collar, *pale rose-pink* guards and center touched with red. Clumps, \$2.25. Divisions, \$1.50.
- MADAME DE VERNEVILLE** (Crousse 1885; 7.9). Very large, exquisitely beautiful, imbricated, bomb-shaped white. The guard petals are pure paper white and very broad, folding over the flowers; center daintily suffused with blush and cream and tipped carmine. The whole flower heavy and compact. Strong grower, a free bloomer and early with a delightful sweet rose-like fragrance. Clumps, \$1.50. Divisions, \$1.00.
- MADAME DUCCEL** (Mechin 1880; 7.9). Enormous, globular and com-



Photograph by Mrs. Frank Pagan, 1936

MADAME EMILE GALLE



Photograph by Mrs. Frank Pagan, 1925

MARIE CROUSSE

MOHICAN PEONIES

- compact bloom; literally packed with petals, which are somewhat incurved like chrysanthemums. A striking, brilliant shade of *deep rose pink* with silvery reflex. Holds its form and color to the end. Considered by many the very finest formed pink in existence. A magnificent cut-flower variety and wonderfully effective for landscape work. Stands among the very first on our "Challenge" list. Fragrant and early. Clumps, \$1.50. Divisions, \$1.00.
- MADAME EMILE GALLE (Crousse 1881; 8.5). See illustration facing page 26. Large, cup-shaped and imbricated bloom. Exquisite shade of soft lilac, with milk-white center which slowly changes to pronounced cream-color. A refined and rarely beautiful flower, not easy to describe. A very fragrant flower of the rose type, blooming freely rather late in the season. Clumps, \$1.50. Divisions, \$1.00.
- MADAME EMILE LEMOINE (Lemoine 1899; 8.9). Enormous and fragrant flower; soft pinkish-white with fleshy center. Exceedingly rare. Clumps, \$2.25. Divisions, \$1.50.
- MADAME FOREL (Crousse 1881; 7.7). This is a fragrant, late-blooming variety of striking effect. The strong stems and full ball-shaped flowers make it a good variety for cutting. In color, it is a clear deep rose. Clumps, \$1.50. Divisions, \$1.00.
- MADAME GEISSLER (Crousse 1880; 7.9). One of the very largest Peonies in existence; very double, globular. Color, a glossy silver rose, shading to Bengal rose at base of petals. Delicious and distinct fragrance. An abundant mid-season bloomer; heavy and perfect flowers coming even on the youngest plants. An ideal keeper, one of the best for cut flowers. True stock of this variety is very scarce. Clumps, \$1.50. Divisions, \$1.00.
- MADMOISELLE ROUSSEAU (Crousse 1886; 8.1). This gorgeous *flesh-pink* Peony blooms freely on tall, sturdy stems. The guard petals of this semi-rose type flower are splashed with carmine, as are some of the center petals. It is a fragrant mid-season Peony of first rank. Clumps, \$2.25. Divisions, \$1.50.
- MARCELLE DESSERT (Dessert 1899; 8.2). Immense flowers of perfect crown form with the exquisite fragrance of a tea rose. The color is a glossy milk-white, splashed with lilac and with occasional crimson flecks in the center. Especially fine foliage. Very desirable. Clumps, \$2.25. Divisions, \$1.50.
- MARECHAL VAILLANT (Calot 1864; 7.5). Extremely large, full, solid flower. One of the most effective reds we have and one of the latest to bloom. Clumps, \$1.50. Divisions, \$1.00.
- MARGUERITE GERARD (Crousse 1892; 8.4). Fragrant, compact, semi-rose type developing into a crown with stamens. Broad, *pale rhodonite-pink* petals, changing to soft blush, almost white. Creamy white center. Exquisite free-flowering Peony and very rare. This Peony challenges description. Visitors at the gardens always order more than do our catalog customers. Clumps, \$1.50. Divisions, \$1.00.
- MARIE CROUSSE (Crousse 1892; 8.9). See illustration facing page 27. Exquisite, large, globular flower, very full. Soft, salmon-pink, shaded with glossy lilac. Tall, erect and strong grower—free bloomer in mid-season. Clumps, \$3.00. Divisions, \$2.00.
- MARIE JACQUIN (Verdier; 8.3). Has a perfection of form that is found in few single Peonies. The pure-white, carefully rounded petals form a cup that closely resembles a waxy white water-lily. Divisions only, \$1.50.
- MARIE LEMOINE (Calot 1869; 8.5). See illustration facing page 23.

MOHICAN PEONIES

- This is the absolutely indispensable Peony to any collection, large or small. Exquisitely beautiful, enormous, massive and solid ivory white, deepening to chamois toward the center and very occasionally tipped with carmine. Invariably a six to seven inch blossom, even under indifferent cultivation. A fragrant free bloomer on extra stiff erect stems and, being a very late white, particularly valuable. Clumps, \$1.50. Divisions, \$1.00.
- MARY BRAND (Brand 1907; 8.7). This mid-season Peony of a rich, deep red is most distinct. Divisions only, \$3.00.
- MATHILDE DE ROSENECK (Crousse 1883; 7.9). Frankly, this Peony has not sold well. If we changed its name to "Lindy" would we like it better? Of course we would! But why not like it in spite of the name? The soft, flesh-pink of the outer petals contrasts with the deeper center and the touch of silver and, here and there a touch of red, on the edges of the petals. Its fragrance is truly delicious; it opens late, forming a double ball-shaped flower. Clumps, \$1.50. Divisions, \$1.00.
- MIKADO (Barr; 8.6). This is a Japanese Peony whose brilliant red petals and yellow center produce a glow of color that resembles in effect a bit of rare old Chinese porcelain. Divisions only, \$4.00.
- MILTON HILL ((Richardson; 9.0). Of great size, densely compact and crowded with petals of the finest texture. An exquisite "sea-shell" pink. A late bloomer and undoubtedly one of Richardson's best productions. Divisions only, \$5.00.
- MODELE DE PERFECTION (Crousse 1875; 7.8). This delightfully refreshing flower is a full, compact rose form. It is *pale rose pink* shaded darker in the center and bordered with silvery rose-tipped collar and large guards, forming high globular buds. It is a fragrant, free bloomer. Clumps, \$1.50. Divisions, \$1.00.
- MODESTE GUERIN (Guerin 1845; 7.8). One of the loveliest of them all and of great all-round merit. Very large, full and compact. Superb deep solid *tyrian pink*. Very free flowering and fragrant. Exceptionally rigid stems and very distinctive foliage. Clumps, \$2.25. Divisions, \$1.50.
- MONSIEUR BOUCHARLAT AINE (Calot 1868; 7.1). This is one of the beautiful and fragrant mid-season varieties. The full, semi-rose flowers are *rose-colored* with silvery reflections. Clumps, \$1.50. Divisions, \$1.00.
- MONSIEUR DUPONT (Calot 1872; 8.3). See illustration facing page 23. Immense, milk-white, beautifully built flower. Central petals tipped with bright carmine and a few golden stamens discernible at their base. An exceedingly fragrant, free-blooming, late mid-season variety, growing on long stiff upright stems. One of the best whites we have for cutting. A rich and rarely beautiful flower. Clumps, \$1.50. Divisions, \$1.00.
- MONSIEUR JULES ELIE (Crousse 1888; 9.2). Immense, globular, very full, double, imbricated bloom on very heavy stems; petalage broad and overlapping, forming one of the most perfect specimens imaginable; color, an ideal, glossy, *pale amaranth pink*, shading deeper at the base, and the entire blossom covered with a silvery reflex. A vigorous plant, freely blooming, very fragrant. Scarcely rivalled either for cut flowers or for landscape work. Clumps, \$3.00. Divisions, \$2.00.



ASA GRAY

Photograph by Mrs. Frank Pagan, 1927



COQUELIN

Photograph by Mrs. Frank Pagan, 1927

MOHICAN PEONIES

- MONSIEUR MARTIN CAHUZAC (Dessert 1899; 8.8). The darkest red Peony in existence; almost black; a brilliant, dark *Bordeaux* with metallic reflex. Large flower of fine form with rounded petals; plant of erect and ideal habit. An extraordinary flower, raggedly put together and therefore unusually decorative. Clumps, \$7.50. Divisions, \$5.00.
- OCTAVIE DEMAY (Calot 1867; 8.5). An exquisite, early mid-season flower, large in size and well-formed, with large guard petals. *Pale flesh color* with darker shaded center. A fragrant profuse bloomer, on short strong stems. An admirable cut flower. Clumps, \$1.50. Divisions, \$1.00.
- PETITE RENEE (Dessert 1899; 7.6). Approaching Petite Renee one's eye is caught from a distance by its great clusters of loose, large-petalled, *rose-colored* flowers, with their prominent yellow stamens. Closer examination shows the terminal blossom to be of semi-double form with narrow center petals surrounded by large guards. The lateral flowers are nearly always *single* and possess a care-free spirit of play in the lightest breeze. This is a charming Peony to plant for landscape effect, since it is not a cut-flower type and should never be disbudded. Clumps, \$2.25. Divisions, \$1.50.
- PHILIPPE RIVOIRE (Riviere 1911; 9.2). This very scarce, bright crimson flower, of beautiful form and sturdy growth, is the most fragrant of the red Peonies. Mid-season. Divisions only, \$15.00.
- PIERRE DUCHARTRE (Crousse 1895; 8.2). This is one of the latest bloomers. The flowers are very large and compact with an exquisite fragrance. In color they are a lovely light lilac-pink with a silvery reflex. Clumps, \$3.00. Divisions, \$2.00.
- PRESIDENT WILSON (ThurLOW 1918; 9.3). Soft, rose-pink, changing to shell-pink as flower opens, guard petals sometimes show crimson markings. Center petals very short, somewhat lacinated, gradually increasing in length outward, producing a cup-like effect. Fragrant. Late. This is generally considered one of the finest varieties for garden or for cut flower. The blooms will last a long time and hold their delicate coloring to the end. Divisions only, \$40.00.
- PRIMEVERE (Lemoine 1907; 8.6). Mid-season, bomb type. Creamy white guards splashed crimson; light, sulphur-yellow center. Fragrant, fairly compact and flat. Tall and vigorous. The most yellow of all double Peonies. Divisions only, \$4.00.
- REINE HORTENSE (Calot 1857; 8.7). A delightful light pink, touched with crimson. The fragrant, semi-rose type flowers, open on tall stems during mid-season. A good cut-flower variety. Divisions only, \$2.00.
- RICHARD CARVEL (Brand 1913; 8.8). This is one of the few red Peonies that are sweet-scented. Its color is a clear, deep red that does not burn in the sunshine. It is double in form and free blooming. As it blooms early and is an attractive cut-flower variety, it is a desirable addition to any collection. Divisions only, \$6.00.
- SARAH BERNHARDT (Lemoine 1906; 9.0). See illustration facing page 31. So well-known and admired that a description seems unnecessary. As a show flower, only a better Sarah Bernhardt can compete. The large, compact, semi-rose flowers of a soft, even shade of apple-blossom pink, tipped silver, open in late mid-season, in clusters carried on strong, vigorous plants. It is gifted with a

MOHICAN PEONIES

- delicious fragrance and, being a dependable show flower, is naturally a good cut-flower. Clumps, \$3.75. Divisions, \$2.50.
- SIMONNE CHEVALIER** (Dessert 1902; 7.9). This large, *rose-pink* of the crown type, is especially valuable as a free-blooming early cut-flower variety. The stems are long and sturdy, carrying the flowers in clusters, if not disbudded. Clumps, \$2.25. Divisions, \$1.50.
- SOLANGE** (Lemoine 1907; 9.7). This flower is almost pink, almost yellow, but not quite either. The vigor, size and fragrance of this lovely flower help to give it its place in the trio of the world's best Peonies. Divisions only, \$5.00.
- SOLFATARE** (Calot 1861; 7.6). One of the few yellow Peonies. The flowers are large, full and fragrant, with white guard petals and center of pale lemon-yellow. A beautiful and distinct variety. Clumps, \$3.00. Divisions, \$2.00.
- SOUVENIR DE L'EXPOSITION DE BORDEAUX** (Dessert 1896; 6.4). Medium sized, globular, bomb-shaped; very round and full; color is *aster purple* which does not fade out under the most glaring sun except at the tips which become tinged with silver. There is nothing else just like it in color and it should be included in every collection. A favorite with visitors to our gardens. Medium height, slender-stemmed, profusely blooming. Clumps, \$1.50. Divisions, \$1.00.
- SOUVENIR DE L'EXPOSITION UNIVERSELLE** (Calot 1867; 7.6). This fragrant, late mid-season, *deep rose-pink* is especially favored by commercial growers as a commercial flower. The large semi-rose type bloom has long, narrow petals tipped silver. Unless disbudded, the stems become overloaded with clusters of flowers. Clumps, \$1.50. Divisions, \$1.00.
- SOUVENIR DE LOUIS BIGOT** (Dessert 1913; 9.1). Exceptionally large blooms of a very distinctive shade of rich, salmon-pink, with silvery lights. This is an extra-fine and scarce mid-season variety. Divisions only, \$7.50.
- THERESE** (Dessert 1904; 9.8). See illustration facing page 6. Many consider this the most beautiful of all Peonies. The flowers are enormous in size, with delicious fragrance, perfect form and fine texture. The plants are vigorous, with large leaves and long stems. The color is an exquisite *pale rose-pink* with deeper shadings. In spite of its apparent delicacy, it is one of the best varieties for cutting and is a favorite with florists. Clumps, \$7.50. Divisions, \$5.00.
- TOKIO** (Japan; 8.9). A splendid landscape variety of immense size, on tall, strong stems. The broad, well-rounded petals are rose-pink. Divisions only, \$10.00.
- TOURANGELLE** (Dessert 1910; 9.4). Of a delicate opalescent tint that can hardly be described. It is a flower that can be watched lovingly and keenly enjoyed as it unfolds from tight bud to full-blown blossom. Its various depths of delicate pink seem to be caused by the reflection of one petal on another. The transparency of its petals gives it a dreamy loveliness quite unlike any other variety. Divisions only, \$3.50.
- TRIOMPHE DE L'EXPOSITION DE LILLE** ((Calot 1865; 7.8). The pyramidal shape of this well-constructed Peony distinguishes it from others, except from Modele de Perfection, which it resembles. The compact, rose-type flower is *pale rosolane purple* with minute



Photograph by Mrs. Frank Pagan, 1925

GLOIRE DE CHARLES GOMBAULT



Photograph by Mrs. Frank Pagan, 1926

SARAH BERNHARDT



MOHICAN PEONIES

touches of a deeper shade. The guard petals are nearly white. It is a fragrant and profuse grower of mid-season and a reliable cut-flower variety. Clumps, \$1.50. Divisions, \$1.00.

UMBELLATA ROSEA (Dessert 1895; 7.4). Considered one of the most valuable of Peonies because it is the earliest to open. The center is *flesh color* and the guards *rose-pink*. The rose type flower is well supported by the strong stems of a vigorous plant; the side buds should be left to bloom for landscape effect. Divisions only, \$1.00.

VAN DYCK (Crousse 1879; 6.5). Loose, crown type. The cream-white center is flecked with crimson; the guards are *pale rose*. A fragrant, free bloomer on erect stems. Clumps, \$1.50. Divisions, \$1.00.

WALTER FAXON (Richardson 1904; 9.3). This is the Peony that people always remember and easily recognize. Its color is a clear, glowing coral pink utterly unlike any other variety. In size, form and vigor this is one of the best. In every way a favorite. Divisions only, \$5.00.

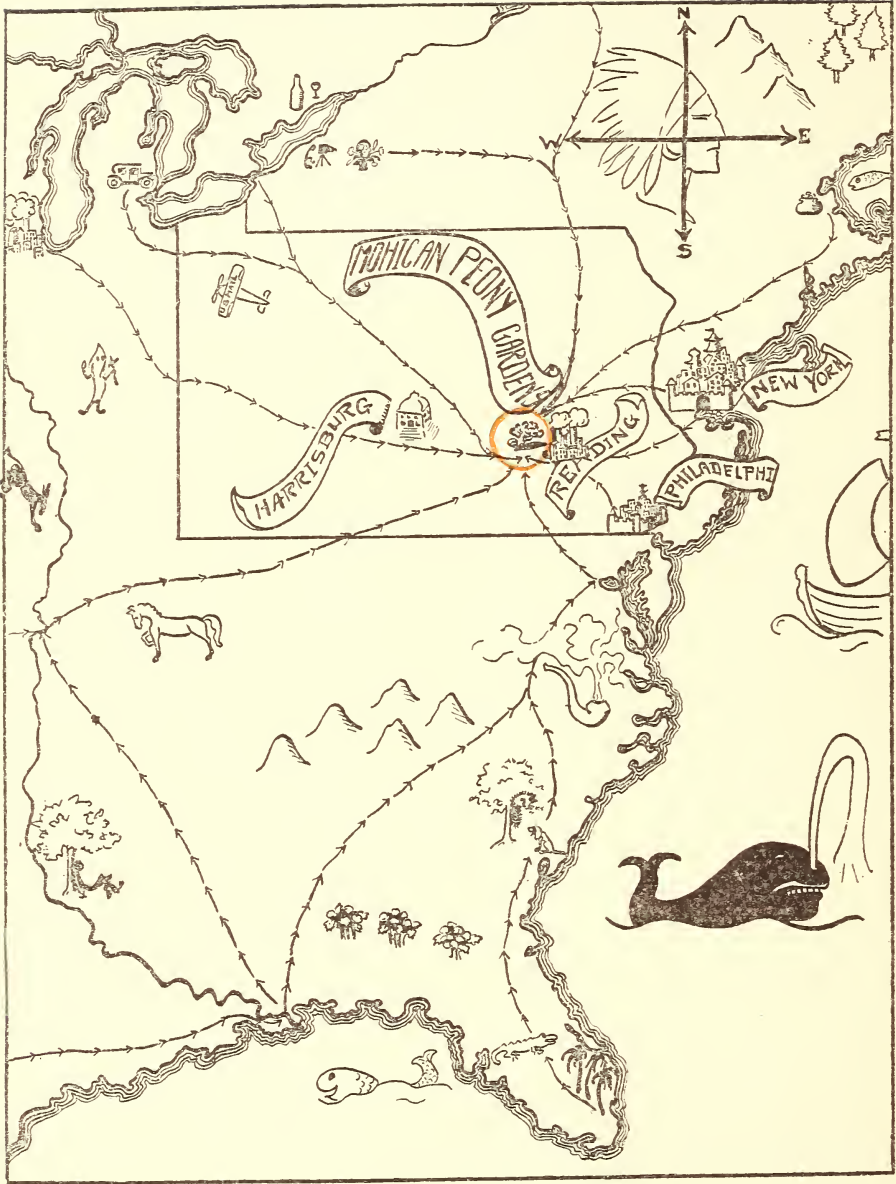
VIGORO. Our desire to have Mohican Peonies prosper in your garden is almost as great as your own ambition for splendid results. Our interest in your garden can be served in no better way than for us to recommend the proper plant food. Vigoro is adaptable to any soil, supplying plants with every element necessary to vigorous growth.

If Vigoro is not available locally you may order it to be shipped with your Mohican Peony plants. Figure on half a pound per plant, bearing in mind that any surplus can be used to excellent advantage elsewhere in your garden. It is clean, odorless and easy to apply. Directions for use are in every package.

100-lb. bag, \$6.00
50-lb. bag, \$4.00

25-lb. bag, \$2.50
5-lb. pkg., \$.75

MIXED REDS, PINKS AND WHITES—Peony roots whose tags are lost or whose identity has been lost never find their way back to their companions. We have a limited number of such roots which we offer in 3-5 eye divisions at 50c each for less than 10; at 40c each for 10 or more; at 35c each for 25 or more. While they last it is the buyers opportunity.



AN INVITATION

We like to think that our catalog establishes a bond of friendship between us and our customers. This delightful friendship is very real to us and we have tried to make it real to you in this bit of print.

To make the relationship more personal, won't you please find opportunity to visit our gardens this spring when the Peonies are in bloom? Usually during the second and third weeks of June the Gardens are gorgeous. You will be welcome at any time of day or evening—Sundays included.

