



Wikimedia Europe

Together in Europe - Outline and Timeline

Purpose and rationale

**Sharing work and creating synergies
benefits the Wikimedia Movement**





Purpose

- Better structure and more capacities to the current advocacy work in EU (Free Knowledge Advocacy Group EU)
- More impact and better visibility in priority topics: access to knowledge and information, liability for content, AI, public data
- Increased capacity to do proactive work
- Capacity building to European Affiliates Fundraising to fund joint projects and initiatives - more money for Europe
- More support to non-EU Affiliates based in Europe



Context

- FKAGEU: non-formalized arrangement between European chapters since 2013
- Admin support provided by WMNL, then by WMDE
- 2 people working in Brussels and supporting participating chapters in advocacy efforts - team at capacity
- Lack of movement-related branding confusing to the key stakeholders
- Chapters' contributions = main sources of support (no other core funding)



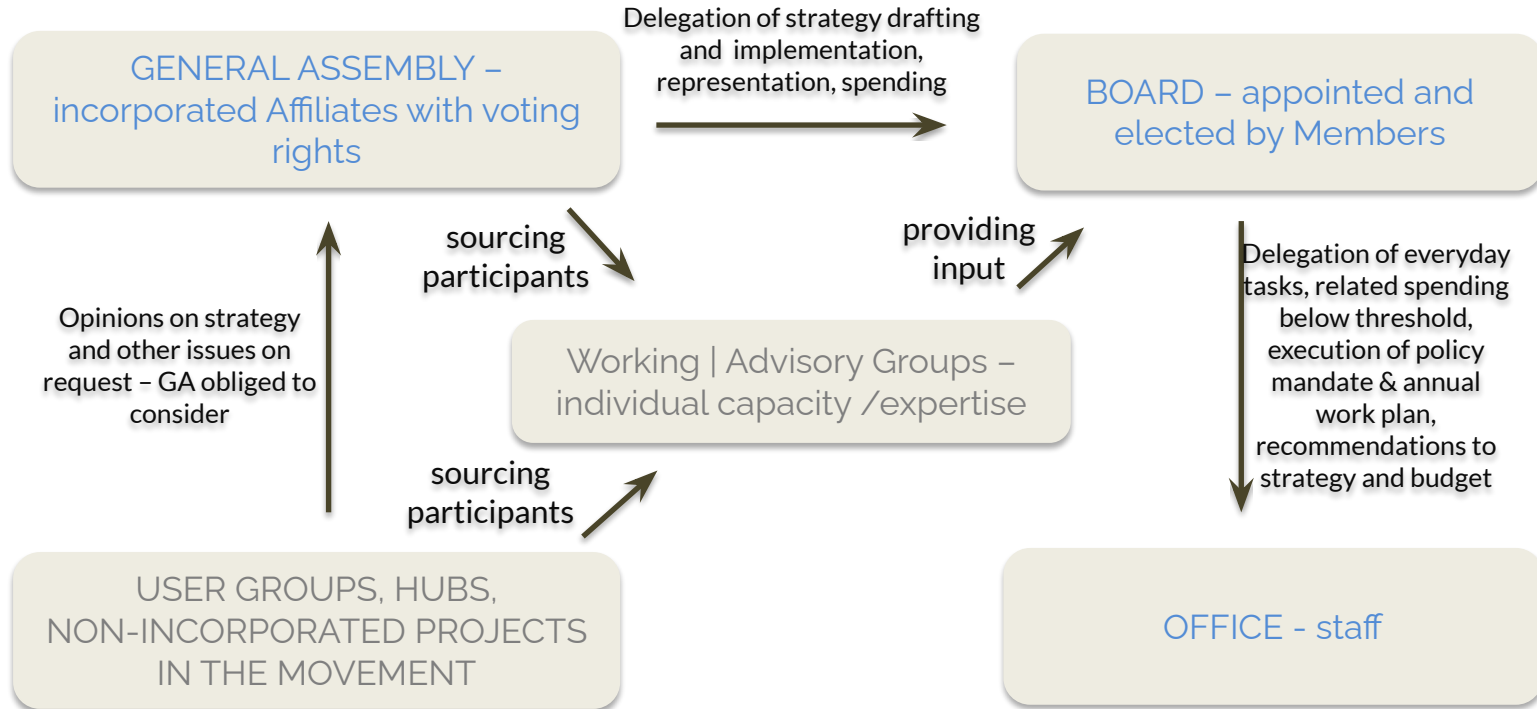
WMEU - a structure fit for purpose

- An association of legal entities seated in a European country and formally recognised as Affiliates within the Wikimedia Movement
- Based in Brussels, Belgium, where most of the activities take place
- Democratically governed: 1 member = 1 vote
- Financial contributions are not a condition for membership
- Branding related directly to Wikimedia Movement
- Coordinating with other Movement structures (hubs, etc.) to share experience, pool resources and not duplicate work

Governance and Relationships within the Wikimedia Movement

**WMEU Members Include other
European Movement
stakeholders and User Groups
in strategic conversations**

Decision-making





Governance

- General Assembly - the highest governing power
 - adopts of strategy, budgets, annual reports
 - adopts changes to the statutes, dissolves the association
- Board - oversight
 - reports to GA on work plan, planned and executed budget
 - accepts new Members
 - oversees implementation of strategy
 - hires staff
 - delegates implementation and daily operations to the staff
- Staff - operations
 - Policy and advocacy activities
 - Capacity building
 - Fundraising



General Assembly

- Members get together at least once a year in Prague, Czech Republic
- Remote participation & voting possible via electronic means of communication
- 1 member = 1 vote; abstentions, blank and invalid votes are not counted
- Secret ballots possible
- Tie = motion rejected; at least 2 votes of support needed for a motion to pass
- Decisions available to Members via permanent electronic record

The Board and its Duties

**During the first 2 years, the
Initial Board will set up
operations and test out
adopted governance model**

—



Initial Board

- term of office: 2 years
- 5 members: 4 endorsed and elected by Members + 1 representative of WMF co-opted by the Board
- at end of term presents recommendations for improved governance structure, statutes, scope, etc.
- other rules and obligations the same as every next Board



the Board

- term of office: 2 years
- min. 3 members: GA can decide to increase by 2 or 4
- includes 1 representative of WMF co-opted by the Board
- the Board chooses its President and decides on other titles (VP, Treasurer, etc.)
- jointly represented by President and another Board member
- the Board can suspend its member, subject to decision of the GA
- the Board forms an office and delegates daily operations and programmatic activities while performing general oversight
- the Board can form working groups and committees and include representatives from non-Members (User Groups, etc.)



Who can be on the Board?

- only Member organisations endorse candidates
- a candidate can be the official representative of the endorsing Member or another person they consider fit for the job
- if a candidate is also a Member Representative, that Member can decide to withdraw the mandate as soon as their candidate is elected to the Board and appoint a new Representative
- candidates need to present a declaration of no conflict of interest
- WMF appoints a person to represent them on the Board, which the other Board Members approve



Forming of the Office

- the Board forms the office by employing one or more staff to manage the Organisation's daily operations. The following is delegated to executive staff:
 - representation of the Organisation vis-a-vis authorities and other entities
 - legal and contractual obligations on behalf of the Organisation
 - financial obligations and approval of transactions below the amount determined in the Board's internal rules of procedure
 - realisation of the planned annual budget
 - execution of an annual working plan
- 2 people currently working within FKAGEU will be transferred to WMEU
- a policy specialist and a fundraiser will be hired to support the new structure

Financing of Activities

**Financial contributions are not
a condition of membership.
Members contribute flexibly
according to their capabilities.**





Financial contributions from Members

- current system is sustained
- Members make pledges on how much they can contribute when they know
- contributions are directed to WMEU when possible



Fundraising

- WMEU can fundraise and receive grants, prizes, allocations, contributions, donations and funds of any kind from Members and/or third parties.
- WMEU can disseminate grants, prizes, allocations, contributions, donations and funds of any kind to Members and/or third parties.
- Wikimedia Europe can conclude any service agreement, partnership agreement or contract of any kind with Members and/or third parties
- All the above activities need to be in the context of advancing the statutory purpose of WMEU
- Opening up new sources of funding for Wikimedia movement in Europe is one of the purposes of WMEU



Timeline

**As immediate next steps,
Affiliates need to confirm the
membership in WMEU and
decide if to endorse
candidates to the Initial Board.**



The Process to Establish WMEU

| Step | Timing |
|---|--|
| Drafting notarial deed for the establishment of the INGO | In progress |
| Execution of notarial deed by the notary | After membership is confirmed at a satisfactory level (mid-July) |
| Application for legal recognition at the Belgian Federal Justice Department | Three business days as of date of notarial deed |
| Royal Decree granting legal personality to the INGO | Expected within three months as of the date of application |
| Publication of the establishment of the INGO | One month as of the granting of the date of the Royal Decree |



We are here to help!

- If your Affiliate is joining, share the information when you have it - possibly until **July 15th**
- **Jan-Bart** is collecting endorsements for the candidates to the Initial Board
- **Dimi and Anna** can answer questions and talk to people from your organisation about WMEU - let us know!
- Let Anna know if you would like this presentation to be **translated** to your language