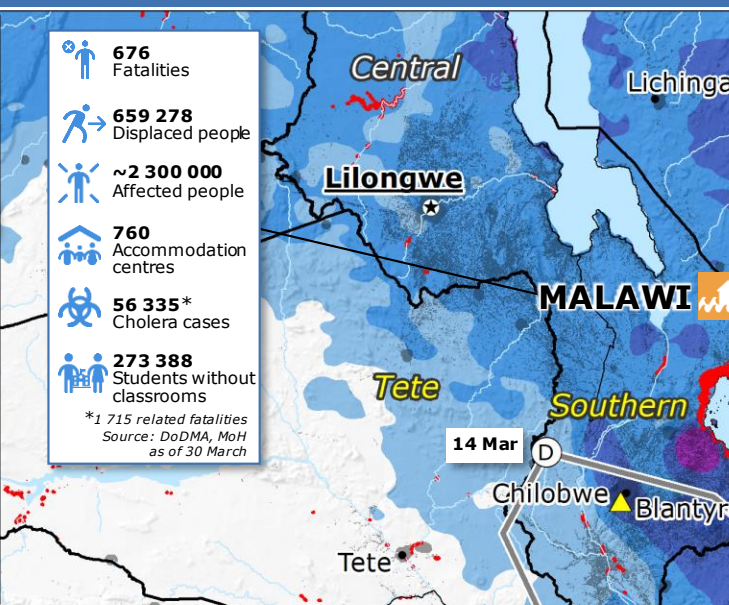
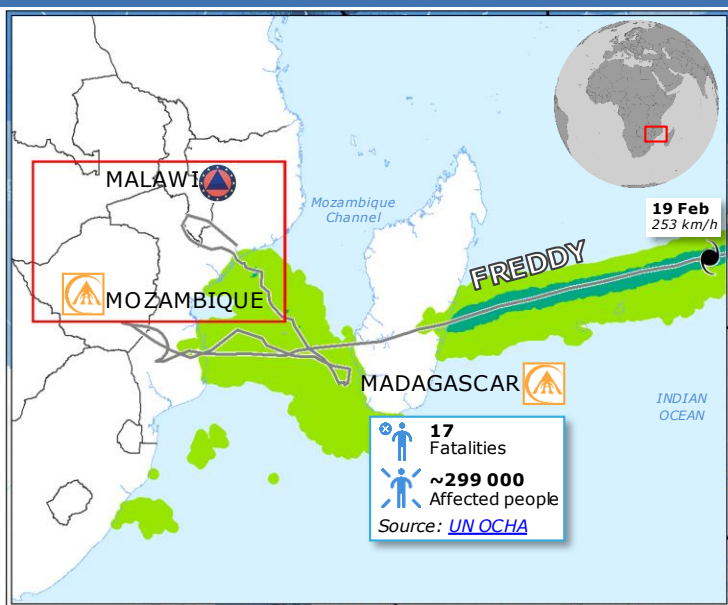


# Malawi, Mozambique, Madagascar | Tropical Cyclone FREDDY and floods



**EU RESPONSE**

- 19 March: [ALERT](#) emergency funding of **EUR 2.5 million** in humanitarian aid for: Madagascar (**EUR 500 000**), Malawi (**EUR 700 000**), Mozambique (**EUR 1 300 000**).
- 23 March: EU Civil protection activation ([UCPM](#)) for Malawi
- 19 Feb – 23 March: Copernicus EMSR **24 maps** produced.

Source: DG ECHO

**Tropical Cyclone (TC)**  
Source: [GDACS](#), [Meteo France La Réunion](#), [JTWC](#)

- Past track
- < 63 km/h Tropical Depression
- 63–118 km/h Tropical Storm
- 119–253 km/h Tropical Cyclone

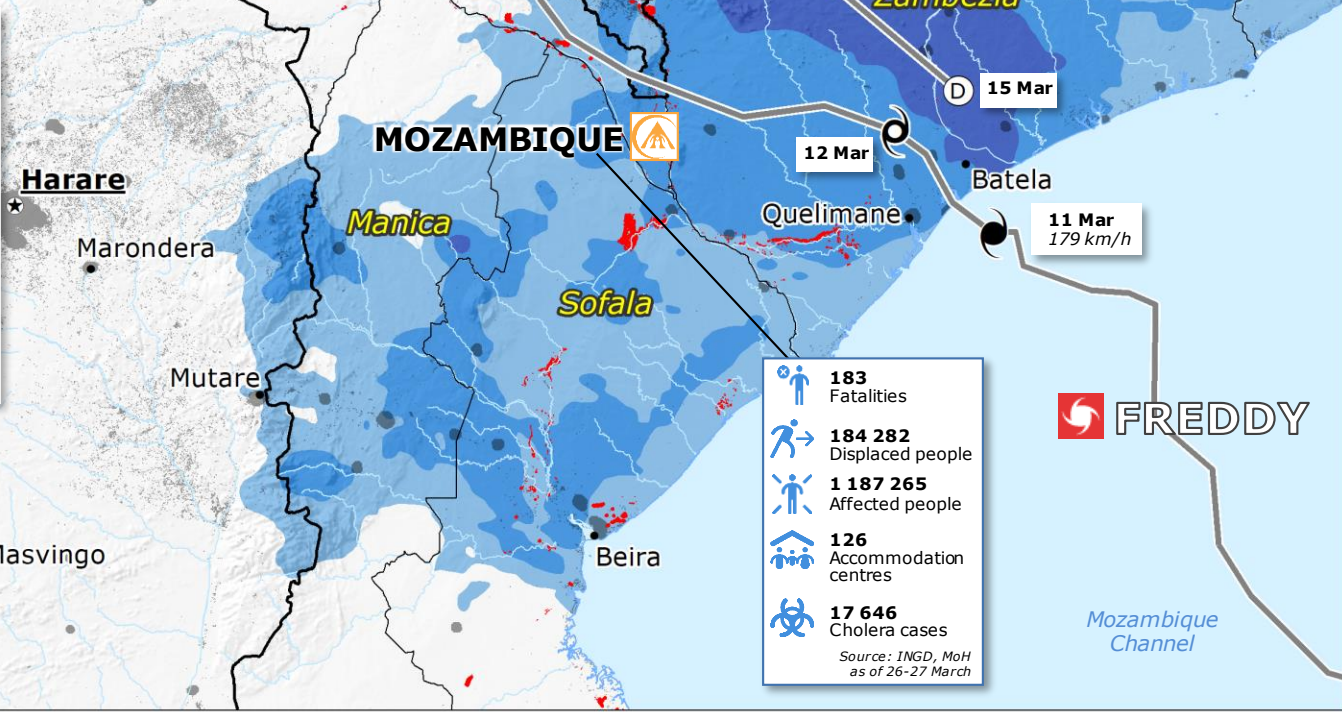
**Rainfall accumulation (mm) over 11 – 30 Mar** Source: [ECMWF](#)

- 401-800
- 201-400
- 101-200
- 50-100

**Wind buffer (km/h) over the entire track**  
Source: [GDACS](#), [ECMWF](#)

- 63-118
- 119-253

- Flooded area over 11 – 30 Mar  
Source: [JRC GloFAS GFM](#)
- Deadly landslide in Malawi  
Source: [UN OCHA](#)
- GDACS **Red Alert** for TC
- GDACS **Orange Alert** for floods
- Most affected administrative division  
Source: [BNGRC](#), [INGD](#)
- UCPM Request for Assistance
- Copernicus EMSR activation ([FMSR652](#), [FMSR654](#))
- Administrative division (Province in Mozambique, Region in Malawi)
- Country boundary
- Densely populated area  
Source: [GHSL](#)



©European Union, 2023. Map produced by the JRC. The boundaries and the names shown on this map do not imply official endorsement or acceptance by the European Union.

