

## **Historic, Archive Document**

Do not assume content reflects current scientific knowledge, policies, or practices.



NEW  
CORTLAND  
APPLE

72.61

**80¢**  
each and up  
See page 7

NEW  
CATALOG  
1927



**SAVE  
MONEY**  
Buy  
Direct from  
Our Nurseries

Fruit Trees **50c**  
Shrubs - **50c**  
Roses - - **60c**  
Perennials **25c**

**GREEN'S  
NURSERY CO.  
ROCHESTER NEW YORK**

*jak*

## GARDEN LOVER'S SELECTION of PERENNIALS

By popular choice the most attractive  
and easiest to grow

- |                |                    |
|----------------|--------------------|
| 1. Fox Glove   | 6. Coreopsis       |
| 2. Columbine   | 7. Iris            |
| 3. Hardy Phlox | 8. Oxslip          |
| 4. Hollyhocks  | 9. Canterbury Bell |
| 5. Larkspur    | 10. Shasta Daisy   |

PRICES OF ABOVE  
PERENNIALS

Strong plants, each . . .

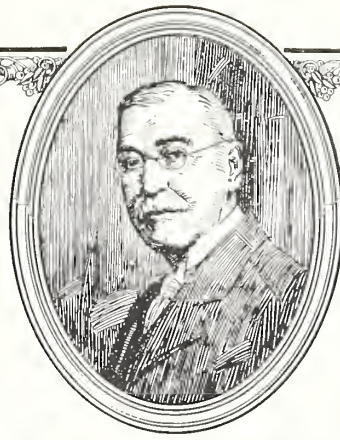
**25<sup>c</sup>**

10 for \$2.00. By parcel post,  
postpaid, 2 cents per plant extra.

For descriptions see pages 43-44



Green's Nursery Company  
CHARLES A. GREEN  
Founder



The First to Sell Direct from  
Nursery to Consumer

# Make Money! Save Money!

## Win Health and Happiness!

### THIS CATALOG POINTS THE WAY

It is hard to be happy without money, and you know it is hard enough to have as much money as you need.

#### *Making Money*

When you plant Green's Good Growing Things you take a long step toward making more money, because Growing Things from Green's are sturdy and fruitful. (One of our good friends in Wisconsin states that he took more than **one thousand bushels** of apples from **eighty** apple trees we sold to him.) In this catalog you can easily see what 80 trees would cost **you**. You know what price is possible for 1,000 bushels of better-than-average apples. Figure the profit for yourself—and you'll not need any urging to invest in growing things.

#### *Saving Money*

**THE FIRST STEP** in saving money is **wise spending**. Folks who **buy direct** from Green's usually get twice as much for their money, or, putting it another way, they spend only half as much as folks who buy the costly, round-about way from "agents" who get paid as much as 30

cents on the dollar for **writing out orders**. We ask you to write out your own orders and save the agent's pay for yourself.

**THE SECOND STEP** in saving money is in being a **producer** instead of only being a **consumer**. We all must eat. In order to eat we must raise our own foods or buy from someone who does.

Folks who spend wisely with Green's Nurseries raise sufficient for their own needs. They get their healthful fruits and berries almost free—and make a profit selling to people who don't or can't raise their own.

**Last—but far from least, health and happiness.** Delightful, sun-ripened, fresh-picked fruits

and berries are absolute necessities to most people—and they are one of the surest ways to health. Where there is health, plus sufficient money, there is greatest chance for happiness. **Be happy! Be healthy! Make sure that your children will be healthy and happy! It is easy—once you get on the right track.**

#### *Special Word to Home Owners*

Some folks buy houses to live in, and be happy in. Such folks don't need to be told how much contentment, how much pride, there is in a colorful and gay flower bed, or in carefully planned shrubbery, or in a lawn of mixed fruit trees and ornamentals.

But, such folks might be surprised when they think of the fact that, in addition to having good looks and lovely odors outside and inside the house, there is always a splendid opportunity to make many dollars each season from the sale of the **extra** flowers and fruit.

And, here is an important thought for folks who like to buy a house, live in it a while, and then sell at a profit. **Plant your lawn**—particularly the front—and see how many more buyers will want your place. And collect several hundred dollars more than you expected! Your house will be **worth more.**

*No matter whether you want to make money, save money, or win health and happiness, there is a page in this catalog which points the way.*

# BIG FREE PREMIUM

As a rule most people wait until the first warm, sunshiny days of spring before they begin to think of ordering trees, plants and vines. Then they all send their orders in at one time, and to take care of these orders properly we have to employ a large number of extra clerks and packers. If we can induce part or all of our patrons to send in their orders early, we can distribute this work over a longer period of time, and not only handle the orders better, but with a much smaller force of men and women. This means a considerable saving of time and money to us and is the one and only reason we can make the liberal premium offer as set forth on this coupon.

## FREE PREMIUM NO. 1

*With all orders amounting from \$5 to \$10, received not later than March 15, 1927, payment in full with order, we will give FREE as a premium the following:*

- 1 Concord Grape Vine
- 1 Spiraea Van Houttei Shrub
- 2 New Syracuse Red Raspberry Bushes  
*(For experimental testing)*

## FREE PREMIUM NO. 2

*With all orders amounting from \$10 to \$15, received not later than March 15, 1927, payment in full with order, we will give FREE as a premium the following:*

- 1 Hydrangea Paniculata Grandiflora Shrub
- 1 Golden Bell (Forsythia) Shrub
- 1 Spiraea Van Houttei Shrub
- 2 Concord Grape Vines
- 2 New Syracuse Red Raspberry Bushes  
*(For experimental testing)*

## FREE PREMIUM NO. 3

*With all orders amounting to \$15 or more, received not later than March 15, 1927, payment in full with order, we will give FREE as a premium the following:*

- 2 Hydrangea Paniculata Grandiflora Shrub
- 2 Golden Bell (Forsythia) Shrub
- 1 Spiraea Van Houttei Shrub
- 3 Concord Grape Vines
- 2 New Syracuse Red Raspberry Bushes
- 2 New Latham Red Raspberry Bushes  
*(For experimental testing)*

As these premiums are tied up in advance of our rush season please do not ask us to make changes in varieties. Premiums can only be sent as listed above.

**Green's Nursery Co., Rochester, N. Y.**



# Right Now We Have More Than Two Hundred Thousand Friends That We Know Of

*Their Names Are on Our Books, and No Business House Secures That Many Friends by Accident or by LUCK!*



**M**R. CHARLES A. GREEN, the founder of this business, never wanted to be selfishly rich. All he asked was comfort and the fine knowledge that hundreds of thousands of good folks knew that they would always get absolutely honest value, and the best possible value, from Green's.

### OUR REPUTATION YOUR ASSURANCE

For 49 years, Green's Nursery Co. has been supplying buyers with a quality of nursery stock which has built our present enviable reputation. Recognizing that our reputation is our most valuable asset, you may rest assured that we will do nothing to violate the public confidence we now enjoy and which has taken 49 years of hard, conscientious effort to build.

We number our satisfied customers by the thousands—in all parts of the country.

Charles A. Green, founder of this business, was the first man to start a service of supplying reliable nursery stock **DIRECT FROM NURSERY TO GROWERS.**

### DIRECT PLAN SAVES 30 PER CENT

We employ no agents, consequently we have no agent's commission (usually 30 cents on every dollar) to pay. This saving we pass on to you—the buyer.

Why pay an agent 30 cents on every dollar for simply making out an order? We make buying easy. The descriptions in this catalog are authoritative and accurate. You need but to make a selection, fill out the order blank and send it in.

### CASH PLAN SAVES YOU ADDITIONAL 20 PER CENT

Selling for cash only enables us to save you an additional 20 per cent. Statistics prove that nurseries which extend credit are fortunate if they collect 80 per cent of the money due them.

They must overcome this loss by adding 20 per cent to their prices. Our cash plan enables you to keep this 20 per cent in your pocket.

This, together with the agent's commission of 30 per cent, means A CLEAR, CLEAN SAVING TO YOU OF 50 CENTS ON EVERY DOLLAR YOU SPEND WITH GREEN'S NURSERY COMPANY.



### Green's Guarantee

*Delivery—We guarantee delivery in good condition. If the customer will notify us immediately that shipment arrived in unsatisfactory condition because of delay in transit or other cause, we will be pleased to make immediate adjustment.*

*True to Name—No human caution could be more exacting than ours. If any of Green's trees prove untrue to name, we will gladly replace the items or refund the purchase price. Obviously, we cannot assume further responsibility than that.*

## Just a Few Letters from Our Satisfied Customers

*[We Have Hundreds of Others in Our Files]*

### ADDS \$1,000 VALUE TO HOME

"The grapes and plums are doing fine. I consider my fruit garden has added \$1,000 to the value of my property aside from the pleasure of having my own fruit in my own little garden."—J Stanley Pascoe, Hawley, Pa., March 30, 1925.

### LIKES HONEST WAY OF DEALING

"Green's Nursery Co.: You state there is a balance due on my order. I was not quite sure it was due me, but I still hold my old faith in your honest way of dealing, so I knew I would get it if it was due me."—Elmer E. Simpson, Clinton, Iowa, March 30, 1926.

### FATHER BOUGHT FROM GREEN'S 35 YEARS AGO

"Mr. C. A. Green: Enclosed please find my order. I am one of your satisfied customers. My father used to buy from your firm for himself and his neighbors 35 years ago, and your name certainly holds the lead when we send for trees."—H. M. Borneman, Schwenksville, Pa., April 10, 1926.

### OVER 1,000 BUSHELS FROM 80 TREES

"Green's Nursery Co.: I must tell you of the success I had with the Grimes Golden apple trees I bought from the C. A. Green Nursery in April, 1912. My son Arthur got first prize at the Wisconsin State Fair on apples, pears, and plums. In 1924, I had over 1,000 bushels of apples from 80 trees, and this year of 1925, have still more. My apples go to the Chicago market, which is a very satisfactory market."—William E. Kittinger, Caledonia, Wisconsin, October 1, 1925.

### ALWAYS TRUE TO NAME

"Green's Nursery Co.: Every tree we have bought from you has lived and is doing fine. Those that have come into bearing have proved to be true to name. Have tried other firms but have found none that is quite up to the standard of Green's Nursery Company."—Jay S. Wellman, Pittsfield, Massachusetts, January 22, 1926.

### UNITED STATES DEPARTMENT OF AGRICULTURE ADVISES YOU TO BUY DIRECT FROM NURSERY

This is what they say: "If the farmer makes his purchases direct from the nurseryman, he will save the expense of the agent and is less liable to mistakes and injury that may occur through repeated handling." United States Department of Agriculture, Farmers' Bulletin Number 113.





# It Is Easy to Order the Green Way

## [HOW TO ORDER]

Simply make your selection from this catalog, use the enclosed order blank and mail it to GREEN'S NURSERY CO., ROCHESTER, N. Y.

### TERMS

Please send payment with order. An express money-order, postal money-order, or bank draft is the best form of remittance. You can send your personal check if you desire. It is not safe to send silver or bills except in a registered letter. This "payment with order" plan saves us the enormous expense of making book records and of collecting accounts, and is one of the features of our business that enables us to sell you such high quality trees and plants at such low prices. To new customers, we extend the privilege of C. O. D. shipments and paying when delivery is made by expressman, mailman or freight agent. No premiums are given on C. O. D. orders. Prices are free on board cars at our nurseries.

### WHEN TO ORDER

It is best to order early, as this enables us to reserve for you the varieties you want and avoids the possibility of our being sold out. The time of shipment may be left to us, as we keep track of weather conditions throughout the country and ship each order so as to reach our customers at the very best time for planting in that locality. If it is necessary that an order arrive on a certain date, please note it on your order sheet and we will ship to arrive as near to that date as possible.

### WHEN TO PLANT

Planting can be done any time the trees and bushes are dormant and the ground not frozen. In most states the spring planting season extends from March 1st until June 1st, and the fall season from October 1st until December 1st.

### HOW TO PLANT

We make every effort to help you get best results and will send you complete planting instructions with your order. Should you desire these planting instructions before shipment, let us know and we will gladly send them.

### ORDERS FOR LESS THAN THREE DOLLARS

If your order amounts to less than three dollars, please add fifty cents extra for packing costs. In our endeavor to make our prices as low as possible, we have based our packing costs on orders amounting to ten dollars or more. As it costs practically as much to pack a small order as it does a large one, we find we cannot profitably handle orders of less than three dollars without an additional charge for packing.

### CLUB ORDERS

It is advisable to order all your wants at one time. This will save you time in handling and planting. If your wants are few, have one or more of your friends and neighbors join with you in ordering. We will tie and tag each person's order separately and bundle all together in one package, and ship to whatever address you desire.

### SPECIAL QUOTATIONS ON LARGE QUANTITIES

Write us for special prices on large orders. Be sure to state the number of each variety wanted and the size of the trees desired.

State of New York  
DEPARTMENT OF FARMS AND MARKETS  
Division of Agriculture

### Certificate of Inspection of Nursery Stock

This is to Certify That the nursery stock of Green's Nursery Company of Rochester, County of Monroe, State of New York, was duly examined in compliance with the provisions of Article 14 of the Farms and Markets Law, and was found to be apparently free from any contagious or infectious disease or diseases, or the San Jose scale or other dangerously injurious insect pest or pests. This certificate expires September 1, 1927.

BYRNE A. PYRKE,  
Commissioner.

By Geo. C. Atwood, Director, Bureau of Plant Industry  
Dated, Albany, N. Y., September 10, 1926



## This Booklet Free to You

Makes Planting and Care After  
Planting Easy; Insures Results

The Green's Nursery Company's interest in your purchase does not end when we have your money; rather it continues until you have obtained full satisfaction.

Realizing that even the best and hardiest nursery stock will not thrive unless properly planted and cared for, we will send FREE, with every order shipped, a copy of one of the most practical planting booklets ever written.

In it you will find simple, practical instructions which will enable you to get your trees and shrubs started right. Even though you have never done any planting, this little booklet, "HOW TO PLANT" makes it easy and the results sure. It is written by authorities, in language the layman can understand and is fully illustrated.

This "HOW TO PLANT" booklet is another evidence of the friendly and helpful manner in which we help our patrons obtain a greater measure of satisfaction in the growing of Green's Trees and Shrubs.



# It Is Easy to Succeed with Green's Trees

GREEN'S customers obtain a value that only many years of propagating and improving of varieties can give. During the forty-nine years we have been in business we have been developing unusual standards of quality. Not only have we, from time to time, added the best varieties obtainable, but we have spent years observing and caring for them until, today, everything we offer you in our catalog has the Green endorsement behind it.

Only the strongest, most vigorous stock is employed in propagating the trees you buy from us. This means that, with reasonable care, you are certain of a full measure of success.

Every care is taken to have our trees reach you in perfect condition. Given the proper attention by you after arrival, they will thrive and bring you profit. We urge that you follow to the letter the instructions in our "How to Plant" booklet. It is easy to succeed with Green's Trees.

### Age of Bearing

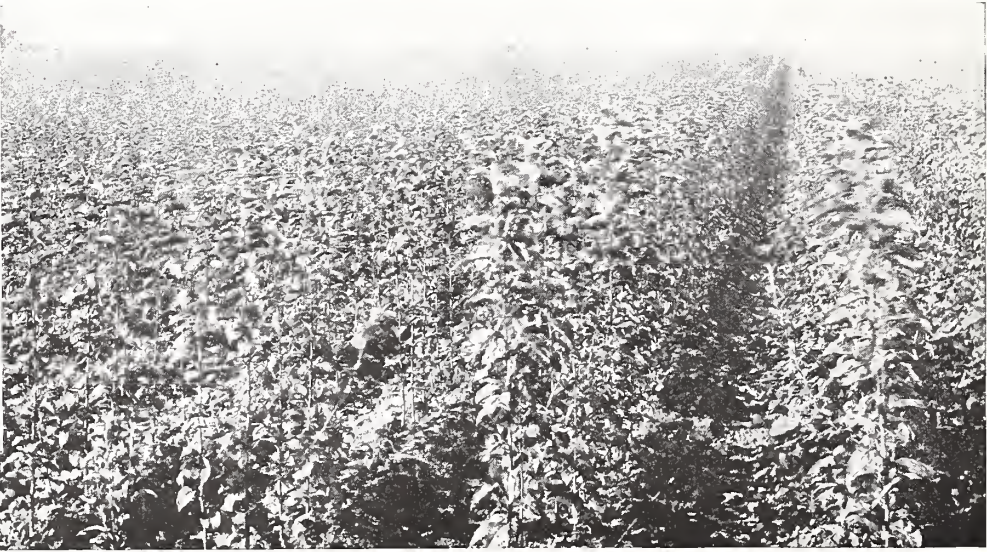
It is impossible to accurately tabulate the age at which fruit trees will bear, due to varying conditions such as soil, climatic conditions and care given. Also,

varieties differ. The following table, based upon averages, will give you fairly dependable approximations:

### Distance Apart—Number Per Acre

To ascertain the number of trees or plants required for any given space, multiply the length of space by the breadth to ascertain the number of square feet available. Then, multiply the distance apart you intend to set your rows, by the distance between each tree or plant in the row to get the number of square feet each tree or plant will take. Divide the number of square feet in the given space by the number of square feet each tree will require and the result is the quantity of trees or plants required for that given space. Example: Given space, 20 feet by 10 feet. Asparagus set 2 feet by 1 foot, 20 feet by 10 feet, equals 200 square feet. 2 feet by 1 foot equals 2 square feet. 200 divided by 2 equals 100 roots.

	Age of Bearing	Distance Apart	Number per Acre
Apples, Std.	3 to 6 years	35 x 35 ft.	35
Apples, Dwf.	2 years	10 x 10 ft.	435
Apricots	3 years	15 x 15 ft.	193
Asparagus	2 years	Field 4 ft. x 18 in.	7,260
		Garden 2 x 1 ft.	21,780
Blackberries	1 year	8 x 6 ft.	907
Cherries	3 to 4 years	Sours 15 x 15 ft.	193
		Sweets 20 x 20 ft.	108
Currants	2 years	4 x 4 ft.	2,722
Gooseberries	2 years	4 x 4 ft.	2,722
Grapes	2 years	8 x 8 ft.	680
Horse Radish	1 year	3 x 1 ft.	14,520
Peaches	2 years	15 x 15 ft.	193
Pears, Std.	3 to 4 years	20 x 20 ft.	108
Pears, Dwf.	2 years	10 x 10 ft.	435
Plums	3 to 4 years	20 x 20 ft.	108
Quinces	4 to 5 years	10 x 10 ft.	435
Raspberries	1 year	6 x 4 ft.	1,815
Rhubarb	1 year	4 x 3 ft.	3,630
Sage	1 year	3 x 3 ft.	4,840
Strawberries	1 year	Field 4 x 1 ft.	10,890
		Garden 2 x 1 ft.	21,780



A Fine Block of Trees Growing in Green's Nursery

# Big Profits in Apples

**Here are the Most Prolific Bearers Selected from over 200 Varieties**

**T**HE apple is a good investment. Trees planted now will begin bearing in from 3 to 6 years and the value of the crop will increase yearly. The apple is without doubt the most important orchard fruit in the country. According to a census made by the United States Department of Agriculture, the number of old trees dying out is far in excess of the number of new trees being planted, in spite of the constantly growing demand. The orchardist who takes advantage of this fact, and plants apples now, will reap rich rewards from his small investment. A few apple trees planted about any home will greatly increase its value. The yearly fruit crops often yield more fruit than is needed for home use, giving a source of extra income as well as added pleasure and satisfaction.

Apples do well on almost any good average soil that will produce a good crop of corn or potatoes. They are usually planted 35 feet apart each way.

There are over two thousand recognized varieties of apples. Unfortunately, however, many of these are not worthy of serious consideration, being lacking in one or more of the essential characteristics of a good apple.

The varieties offered in this catalog are a selected list of varieties, the result of nearly fifty years' careful study and investigation on our part. They are dependable varieties of known and recognized value.

The descriptions of varieties given herewith apply both to standard and dwarf trees. The only difference is in growth of tree, age of bearing and size of fruit. Dwarf trees are lower-growing, come into bearing younger and as a rule produce fruit of a larger size.

## Prices of Green's Standard Apple Trees

ALL VARIETIES EXCEPT CORTLAND, McINTOSH, DELICIOUS, FAMEUSE, SWEET BOUGH AND TWENTY OUNCE

Age	Height	Each	10	50
2 yrs. old, Well Branched	3 to 4 ft.	\$.60	\$4.00	\$12.50
2 yrs. old, Well Branched	4 to 5 ft.	.70	5.00	20.00
2 yrs. old, Well Branched	5 to 7 ft.	.85	7.00	27.50

Parcel Post Size: First-class, 2 to 3 ft. trees can be sent by parcel post for 55 cents each, postpaid.

RATES—Less than ten standard apple trees at each rates. Ten to fifty at ten rates. Fifty or more at fifty rates.

## Prices of McIntosh, Delicious, Fameuse, Sweet Bough and Twenty Ounce

Age	Height	Each	10	50
2 yrs. old, Well Branched	3 to 4 ft.	\$.70	\$5.00	\$17.50
2 yrs. old, Well Branched	4 to 5 ft.	.80	6.00	25.00
2 yrs. old, Well Branched	5 to 7 ft.	.95	8.00	32.50

Parcel Post Size: First-class, 2 to 3 ft. trees can be sent by parcel post for 65 cents each, postpaid.



Delicious Apples—All the Name Implies

## Summer Apples

**SWEET BOUGH**—A large, pale, greenish-yellow, sweet apple of excellent quality. Should be in every home orchard. Ripens in July.

**RED ASTRACHAN**—The best mid-summer cooking and eating apple for home and market. Yellow, splashed with deep crimson. Brisk subacid in flavor. Very good in quality. The tree is medium in size, a reliable cropper, moderately productive, very hardy and bears the fourth year. Ripens in July and keeps until September.

**YELLOW TRANSPARENT**—One of the best of the extra early apples; waxy-yellowish white, mild acid, juicy and pleasant. Bears annually, or nearly so, starting the fourth year. Extremely hardy in the North. A good filler tree.

## Autumn Apples

**GRAVENSTEIN**—A variety of excellent quality. For culinary purposes unexcelled by any variety of its season. The skin is slightly rough and of an orange-yellow color, overlaid with broken stripes of light and dark red. Sprightly subacid in flavor. The trees grow rather large, come into bearing early, are quite productive and are pretty reliable croppers. Moderately hardy. The fruit ripens about the middle of September and continues in season till early November.

**OLDENBURG**—Often called Duchess of Oldenburg, or just Duchess. Has excellent culinary qualities; pleasant to eat out of hand when fully ripe. Skin is yellow, with splashes and stripes of red. A good filler tree, as it is dwarf in habit. Comes into bearing at about the fourth year. In season late August and September.

**TWENTY OUNCE**—One of the most satisfactory of the fall varieties for commercial planting. Large, attractive, greenish-yellow, with broad stripes and splashes of red. Bears young, almost annually, and is a good cropper. Ripens in September and keeps until early winter.

For Prices of Cortland Apple Trees, See Page 7



**Baldwin**  
The Old  
Reliable

## Winter Apples

**BALDWIN**—Due to its dependability, desirable season, good size, attractive color and good quality, Baldwin is the leading commercial variety for New York, New England, and certain parts of Canada, Ohio and Michigan. Every orchard in the Baldwin belt should have at least a few trees of this grand "old reliable" variety. Large, strong, vigorous trees, producing an abundance of large to very large apples of a bright red color, with yellowish, crisp, tender, very juicy flesh. Agreeably subacid in flavor. Very good in quality. Rather slow to come in bearing, but rapidly makes up for lost time when it begins bearing. Long-lived. Ripens in November and lasts until April in common storage and to May or later in cold storage.

**BLLENHEIM**—Often called Blenheim Orange. Fruit large, yellow, striped with red. Has attractive appearance and excellent quality. Slightly subacid. Its fine qualities make it desirable for home and market uses. One of the very best for making sauce and pies.

**DELICIOUS**—Sometimes called Stark's Delicious. A really delicious apple with a distinct flavor all its own. A high-quality apple. Fruit large, somewhat conical in shape, tapering at the base into five distinct knobs. Its beautiful crimson color and unique shape make it an ideal apple for the fancy or box trade. Sells readily for high prices at the fruit stands. The flesh is crisp and juicy.

Mild in flavor, but not a sweet apple. Has a decided aroma which is very pleasing. The tree is hardy, vigorous and productive. Bears about the fourth year. In season from November until May.

**FAMEUSE**—Probably better known as Snow. Its white, tender, exceedingly crisp flesh and mild sub-acid flavor make it a delicious eating apple. It is a moderate grower, producing rather heavy crops of medium-sized, dark red fruit, almost annually. Hardy. Succeeds well in the North.

**GRIMES GOLDEN**—Probably the best yellow apple. Desirable for both dessert and culinary uses. Generally not considered a good commercial apple in the northern states. It is, however, a fine apple for the home garden. Flesh yellow and firm, with a rich, refreshing flavor. Tree bears early. Vigorous.

**HUBBARDSTON**—By many known as Hubbardston Nonesuch. Identical, we believe, with American Blush. Considered one of the most profitable varieties of its season, ripening as it does between the autumn varieties and the late ripening winter apples. Fruit large, of good flavor, mottled red and yellow in color.

**JONATHAN**—A very beautiful, bright red apple, highly flavored, and of excellent quality for either dessert or culinary uses. Is much in demand as a fancy apple during the holiday season. Grows best in the Middle West where it attains its full size. Under favorable conditions, the tree is a reliable cropper, bearing good crops biennially.

**McINTOSH**—In our opinion, not equaled in quality and flavor by any other variety with the exception of the Cortland, its progeny, which it resembles very much. Due to its very high quality and its exceedingly attractive appearance, it commands a ready sale and a fancy price in all the large Eastern markets. Has held the record for high price for years in Boston, New York, and Chicago markets. Rapidly making a place for itself as one of the leading if not leading commercial apple of the East. The fruit is very attractive in appearance, of bright deep red color, which in highly colored specimens is almost purplish-red overspread with a thin lilac bloom. Fruit above medium in size, with white, firm, very crisp flesh, fine-grained, tender, very juicy. Sprightly subacid in flavor with a characteristic perfume and aroma. The tree is rather a strong grower, very hardy and healthy. Comes into bearing about the fourth year and is a reliable cropper, yielding good crops biennially and sometimes annually. We recommend it highly to Eastern orchardists. In season from October to December or later.

**NORTHERN SPY**—An old-time favorite with a distinct flavor that appeals to those who like a brisk spicy apple that is not actually sour. One of the leading commercial varieties. The fruit is large and attractive, being of bright red color, overspread with a delicate bloom. The flesh is very juicy, crisp, tender, and most excellent for either dessert or culinary purposes. An excellent keeper. It is too tender and juicy for evaporating. May be slow to come into bearing, but has been known to bear paying crops in seven years. Bears moderate to heavy crops, biennially, or almost annually. Being a late bloomer, it sometimes succeeds when others fail from late frost damage.

## The Wonderful New Cortland Apple

**Combines the Richness of the  
McIntosh with the Tenacity  
of the Ben Davis**

**C**ORTLAND has been given the highest honors obtainable in the horticultural world. The American Pomological Society awarded to Cortland the Wilder silver medal for new fruits. To qualify for a Wilder medal, a new fruit must exhibit superiority to all existing varieties with which it will compete.

### Origin of Cortland Apple

Cortland originated at the New York State Agricultural Station. It is a cross obtained by hand pollinating McIntosh with Ben Davis.

### Possesses Desirable Characteristics of Both Parents

Cortland more nearly combines the good qualities and eliminates the weakness of both parents than had ever been hoped for by those responsible for this remarkable variety. From the Ben Davis side of the family it derives one of its most notable and valuable characteristics, namely, its ability to hang to the tree. To the credit of Ben Davis must also be entered its

ability to stand handling. Those who grow Cortland testify that it handles as well as Baldwin. For its high quality, Cortland must look to the McIntosh side of the house. **THE TASTE CAN HARDLY BE DISTINGUISHED FROM THAT OF THE MCINTOSH, BUT IS EVEN RICHER, IF THAT BE POSSIBLE.**

### Description of Cortland

The fruit of Cortland is as large or larger than that of McIntosh, round to somewhat conical in shape. In color it is a bright red, blushed with darker red, splashed and striped with carmine and more or less overlaid with a deep purplish bloom. The flesh is white, often with a pinkish tinge, fine, crisp, tender, juicy, subacid and aromatic. The trees are large, vigorous, upright-spreading, very hardy, productive and healthy. Flowers bloom in mid-season. Fruits about three weeks later than McIntosh. Bears very young and full crop every year. In our nurseries last year, two-year-old Cortland trees produced 2 or 3 good specimens per tree

### Origin of Green's Cortland Trees

We secured our buds direct from bearing trees that were propagated at the New York State Agricultural Grounds at Geneva, New York.

### Order Cortland Apples at These Low Prices

Age	Height	Each	10	50
2 yrs. old, Well Branched	3 to 4 ft.	\$.80	\$6.00	\$22.50
2 yrs. old, Well Branched	4 to 5 ft.	.90	7.00	30.00
2 yrs. old, Well Branched	5 to 7 ft.	1.10	9.50	40.00

Parcel Post Size: First-class. 2 to 3 ft. trees can be sent by parcel post for 75 cents each, postpaid.

**Important Notice** Send your order for Cortland apple trees as soon as possible. Last year we sold out of Cortland before the end of February. Same thing the year before. Although we have a larger supply of these trees than ever before, the demand for Cortland is increasing very rapidly. Don't court disappointment by delaying your order.



The New Cortland Apple

### Hangs Well to Tree

A prominent fruit grower writes as follows: "I visited the Cortland orchard of Mr. William Hotaling on October fourth. At this time the Cortland apples were just ready to pick. Under one tree were lying five or six apples, while other varieties nearby were dropping badly, due to the twenty-mile wind that was whipping through the orchard. The few Cortland apples that were on the ground had the stems torn out. In other words, the few Cortlands that had dropped, had been literally torn from the trees by the whipping of the wind."

### Cortland Cannot Be Surpassed

Professor U. P. Hedrick, of the New York State Agricultural Station, has this to say about Cortland: "The Cortland cannot be surpassed by apples grown anywhere in the world, and apple growers in New York and New England have opportunity to specialize in a distinctive fruit that will bring renown and profit to the industry of the region."

**PUMPKIN SWEET**—Generally

known in central and western New York as Pound Sweet. One of the best sweet apples of its season for baking, and for canning or stewing with quinces, but generally is not valued for dessert. Fruit very large, yellow in color. The tree is a strong grower, long-lived and fairly hardy. A pretty reliable cropper, yielding good crops biennially. In season from early October to January.

**RHODE ISLAND GREENING**

—Commonly called by the simple name of Greening. As a cooking apple it is unsurpassed, and as a dessert fruit of its season, has few equals. It is a good variety to grow with Baldwin in commercial orchards, because, being a little earlier in season, it can be picked and marketed before it is necessary to pick Baldwin. The fruit is large, yellowish-green, often with a dull blush. It is long-lived, productive and a reliable biennial cropper. In season from October through January.

**ROME BEAUTY**—A medium to large apple, yellowish

more or less mottled with bright red. It is thick-skinned, stands handling well and is a good keeper. It has an established reputation in market and sells at a good price. As compared with Baldwin it is not quite as good in quality either for dessert or culinary uses, but the tree comes into bearing at a much earlier age and under right conditions is more nearly an annual bearer. Can be grown successfully except along the Canadian border, but is at its best in New Jersey and along the Ohio river. Flesh is firm, crisp and juicy. Commonly good but not of high quality. Ripens in November and keeps until April or May.

**ROXBURY RUSSET**—The most popular russet apple.

An excellent keeper, of good size, with a russet-brown skin and a bronze blush in highly-colored specimens. Flesh is tinged with yellow or greenish, firm, somewhat coarse, moderately tender and crisp. Sprightly subacid in flavor. Good to very good in quality. A biennial bearer and under favorable conditions a reliable cropper. In season from December to July.

**Wealthy Apple**

attractive, beautiful red fruit, makes it worthy of a place in the home orchard. In maturity, it is a regular bearer, yielding moderately heavy crops annually. Fruit tender and juicy, and subacid in flavor. In season from October to January.

**TOLMAN SWEET**—A medium size, whitish-yellow, sweet apple, much esteemed for pickling, boiling and baking. Very hardy. Ripens in November.

**TRANSCENDENT CRAB**—This for many years has been one of the most popular of the crab apples. The fruit is medium to rather large, skin clear bright yellow with red cheek overspread with bloom. Flesh yellow, crisp, juicy, somewhat astringent and subacid in flavor. Very good for culinary uses. A good grower, hardy, and usually very productive. In season from late August to middle of September or later.

**WAGENER**—The fruit is medium to large, bright red in color, having a fine texture, high flavor, and excellent quality. Good for cooking, but especially prized for dessert. A steady bearer, needing to be thinned to keep it from over bearing. Is recommended as a filler between longer-lived varieties. In season from October to February or later.

**WEALTHY**—Particularly valuable in cold climates where a hardy tree is needed. A thrifty grower when young, but forming a medium-sized tree. Planted in commercial orchards as a filler between rows of strong-growing varieties. Fruit a very attractive red and yellow color, rated good to very good quality. In season from October to January.

**WINTER BANANA**—An exceedingly attractive yellow apple, usually with a bright red cheek. Has distinct banana flavor and good dessert quality. Keeps well. Have kept them in ordinary home cellar in excellent condition until May. Is thrifty, bearing when young and almost annually. Moderate to heavy crops. In season from mid-November to April first.

**GREEN'S SPECIAL  
APPLE COLLECTION**

6 Standard Apple Trees  
4 to 5 ft. high—all for \$3.75

1 Cortland	1 Tompkins King
1 Baldwin	1 Yellow Transparent
1 Gravenstein	1 Transcendent Crab

Attractively Priced at . . . **\$3.75**

Cannot be sent by parcel post.

Order Your Cortland Apple Trees Early. The Demand Is Far in Excess of the Supply



# Dwarf Apple Trees

**Bear Young—Have Large Fruit—Require Less Space**

**We Have a Fine Supply Ready to Ship You**

**W**HAT more could one ask for than apples from trees when they are only two years old? Our dwarf apples usually commence to bear the second year after planting. Apples the same color, quality, and flavor, but larger than standard apples, ripening the same season, are borne on these popular varieties of dwarf trees listed below. The low-growing habit of dwarf trees makes them especially suitable for use in small gardens or in small lots. The fruit can be easily picked without ladders. Dwarf apples and pears make beautiful and prof-

itable hedge rows when planted in rows 4 to 5 feet apart. The usual distance for orchard planting is 10 feet apart each way. **Prune dwarf apples quite severely each spring.** They thrive best when well headed back.

Our dwarf apple trees are grown on Doucin roots and are really semi-dwarf trees, being neither as small as the extremely dwarf trees grown on Paradise roots, or as large as those on standard roots. Depending on variety, they average in size with the peach or plum. This makes them extremely desirable for planting where space is limited.

## Prices of Green's Dwarf Apple Trees

ALL VARIETIES EXCEPT CORTLAND

Age	Height	Each	10	50
2 yrs. old, Well Branched	2 to 3 ft.	\$.70	\$5.00	\$17.50
2 yrs. old, Well Branched	3 to 4 ft.	.80	6.00	25.00
2 yrs. old, Well Branched	4 to 5 ft.	.95	8.00	32.50

Parcel Post Size: First-class trees, 2 to 3 ft. high, can be sent by parcel post for 75 cents each, postpaid.

RATES—Less than ten dwarf apple trees at each rates. Ten to fifty at ten rates. Fifty or more at fifty rates.

### List of Varieties We Can Supply in Dwarf Apple Trees

Baldwin  
Delicious  
McIntosh  
Oldenburg

Red Astrachan  
Wealthy  
Winter Banana  
Yellow Transparent

**Note**—Descriptions of these varieties will be found on preceding pages. Dwarf apple trees produce fruit of the same color, quality and flavor as standard trees. The season of ripening is the same, but dwarf trees come into bearing younger, do not grow as tall and the fruit as a rule is larger in size.

## Plant the New Improved Cortland Dwarf Apples

We can now furnish this new prize variety in fine, 2-year-old, well-branched trees

### Prices of Cortland Dwarf Apple Trees

Age	Height	Each
2 yrs. old, Well Branched	2 to 3 ft.	\$1.00
2 yrs. old, Well Branched	3 to 4 ft.	1.25
2 yrs. old, Well Branched	4 to 5 ft.	1.75

Parcel Post Size: First-class trees, 2 to 3 ft. high, can be sent by parcel post for \$1.05 each, postpaid.

## ANOTHER BIG BARGAIN DWARF APPLE COLLECTION

4 Dwarf Apple Trees

1 Delicious  
1 Baldwin

1 Winter Banana  
1 Yellow Transparent

Special Price . . **\$3.25** 4 to 5 ft. high  
Cannot Be Sent by  
Parcel Post



A Two-Year-Old Dwarf Apple Tree

Descriptions of Varieties on Preceding Pages



Elberta—The Leading Commercial Peach

# Peaches

## Net Handsome Profits

**S**ECOND in commercial importance comes the peach. Despite the rapidly increasing demand for this fruit, new orchards are not being planted as rapidly as old ones are dying off, and orchardists should take full advantage of this by planting more peach trees. Peach trees make very desirable fillers in an apple orchard. They come into bearing very young and they will pay for the care and maintenance of the apple trees and net a handsome profit besides; and by the time the apple trees need the room, they will have borne a full crop and can be dug up without loss. Peaches prefer a good sandy loam, but will do well on almost any soil except a heavy clay. They are usually planted 15 feet apart each way.

This is a selected list of varieties—the cream of hundreds of varieties—all thoroughly tried and tested and found to be possessed with the essential characteristics of a good peach. Our peach trees are all hardy, northern-grown.

### Prices of Green's Peach Trees

Age	Height	Each	10	50
1 yr. old	2 to 3 ft.	\$.50	\$4.00	\$12.50
1 yr. old	3 to 4 ft.	.60	5.00	15.00
1 yr. old	4 to 5 ft.	.75	6.00	17.50

Parcel Post Size: First-class trees, 2 to 3 ft. high, can be sent by parcel post for 55 cents each, postpaid.

RATES—Less than ten peach trees at each rate. Ten to fifty at ten rates. Fifty or more at fifty rates.

**BELLE OF GEORGIA (White, Freestone)**—A creamy white peach with a beautiful crimson cheek, grown largely as a commercial peach in the South. Trees hardy, vigorous, and very productive. Of good quality, but in our opinion not equal in flavor to Champion. Ripens here in August.

**CARMAN (White, Freestone)**—One of the most profitable peaches of its class and season. Does well on soils and in climates where others would not succeed. The color is a brilliant red splashed with darker red on a creamy-white background. Very good in quality. Ripens here about the middle of August.

**CHAMPION (White, Freestone)**—This is considered the highest in quality of all the white-fleshed peaches. In addition to its tender flesh, juiciness and pleasant flavor, it has a peculiar honeyed sweetness that gives it individuality. It is vigorous, healthy and productive, but on some soils is apt to produce fruit not fully up to standard in size or color. The skin is creamy-white with splashes of carmine and darker red. Ripens in late August or early September.

**ELBERTA (Yellow, Freestone)**—Deservedly, Elberta is the peer of all commercial peaches. It leads all other varieties in number of trees planted in America and is the most popular peach in the markets. The two characteristics that enable Elberta to hold first place undisputed are its ability to do well in almost any soil or climate and its fruitfulness. Added to these great points of superiority are its healthiness, large size, vigor, early bearing, and longevity in tree, and large, handsome, well-flavored fruit which ships and keeps remarkably well. A beautiful, large, golden-yellow peach, with a brilliant red cheek, firm, juicy, rich and sweet. While possibly not quite as high in flavor as Rochester or Early Crawford, a peach of excellent quality, prized for dessert, canning and culinary uses. A peach whose place would be hard to fill with any other variety, for no other peach has yet been introduced that will fill the requirements of a commercial peach with such success as the Elberta. Ripens here early in September.

See New Low Prices on Caco Grape, Page 23





**CROSBY (Yellow, Freestone)**—A remarkable peach for growing in sections too far north for other varieties. Often called “frost-proof” on account of its extreme hardiness. Besides hardiness, the tree has vigor, health and productiveness. The quality of the fruit is excellent. The rich yellow flesh is delicious to the taste either as a dessert or culinary fruit. Yellow, blushed with dull red. Often handsome under favorable conditions, but apt to run small in size and less attractive in appearance in soils to which it is not perfectly suited. An ideal home sort. Ripens here in September, following quickly after Early Crawford.

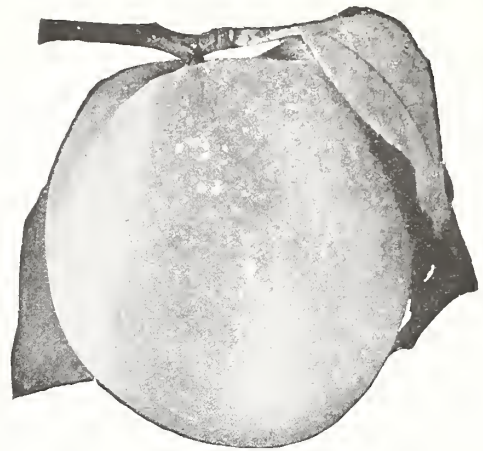
**EARLY CRAWFORD (Yellow, Freestone)**—This peach has all the characteristics that gratify the taste: richness in flavor, pleasant aroma, tender flesh and abundant juice. Unapproached in quality by any other variety except Rochester, its offspring. Fruit very large, golden-yellow blushed with dark red. The flesh is a beautiful marbled-yellow rayed with red at the pit and perfectly free from the stone. The trees are all that could be desired in health, vigor, size and shape, but do not bear as heavily as some varieties and are somewhat tardy in bearing. An excellent home orchard variety. Ripens here in late August or early September.

**FITZGERALD (Yellow, Freestone)**—A large, handsome, yellow peach resembling the Early Crawford very closely, but ripening a few days earlier. Trees are very hardy and moderately productive. The fruit is of excellent quality, firm, tender and sweet. A fine variety for the home orchard. Ripens here in late August or early September.

**GREENSBORO (White, Freestone)**—One of the leading white-fleshed peaches, principally because of its great productiveness and early bearing. The fruit is large and showy but not equal in quality to Champion.



**J. H. Hale Peaches—Large and Luscious**



**Early Crawford Peach**

Well thought of by fruit dealers, not only on account of its attractiveness but because the fruits carry well and keep long. Skin is creamy-white blushed and striped with dark red. Ripens here in July.

**J. H. HALE (Yellow, Freestone)**—A notable variety of recent introduction, unusually large in size of fruit and very handsome. Largely advertised as a rival to Elberta for commercial honors, but reported in many sections as not prolific enough to compete with that grand old variety. Of a deep golden-yellow color overlaid with bright carmine. Flesh firm, fine-grained and good in quality. An excellent shipper. Should at least be in every home orchard. Ripens here in late August or early September.

**LATE CRAWFORD (Yellow, Freestone)**—A peach of high quality and richness in flavor that ought long to remain one of the treasures of the home garden. The trees are hardy, vigorous and healthy, but it had to give way as a commercial peach to Elberta because it lacks somewhat in productiveness and is a little tardy in coming into bearing. Fruit large and very handsome, deep yellow blushed and splashed with dark red. Ripens here the last of September.

**Here's a Real Bargain**

**PEACH TREE COLLECTION**

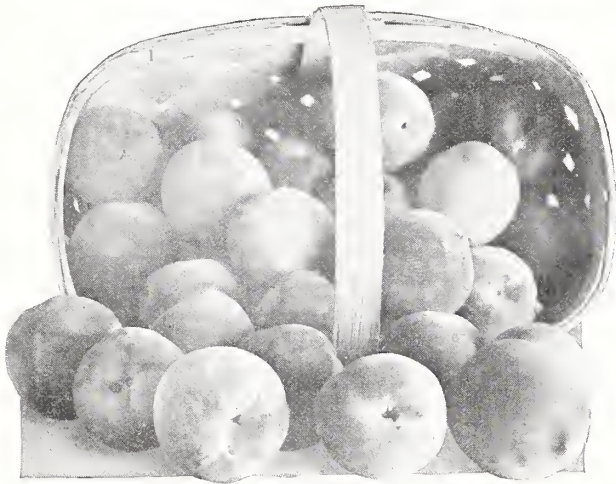
4 Peach Trees  
4 to 5 ft. high—all  
for \$2.45

1 Rochester	1 J. H. Hale
1 Elberta	1 Carman

Unusual Value at . . . **\$2.45**

Cannot Be Sent by Parcel Post





Rochester—The Most Delicious Peach of All

**ROCHESTER (Yellow, Freestone)**—A remarkable new early peach which seems to combine the high quality of the Early Crawford with the productiveness of the Elberta. Generally recognized as the best early variety. Coming into the market as it does about two weeks ahead of Early Crawford, it commands not only the highest price but a ready sale. An early bearer, often producing fruit the year after planting. Not only an ideal home orchard variety but an excellent commercial peach as well. Makes a great combination with Elberta. We recommend it very highly. It is being planted largely here in western New York and fruit growers report it as being a very profitable variety. The fruit is large, yellow mottled with red in color, with thick, firm, juicy flesh, rich and sweet in flavor. The trees are hardy, vigorous and productive. Ripens here the middle of August.

**WILMA (Yellow, Freestone)**—A new variety of great promise. Fruit growers have long wanted a good productive yellow peach a little later in season than Elberta. Wilma seems to be that variety. It is about ten days later than the Elberta. The trees are vigorous, productive and very hardy. The fruit is large, handsome and of good quality, yellow mottled and blushed with bright dark red, with tender, juicy flesh of good flavor and quality. Ripens here about the middle of September.

**YELLOW ST. JOHN (Yellow, Freestone)**—An exceptionally fine variety for the home orchard. Fruit medium size, sweet, rich and delicious. Trees vigorous and hardy. Not productive enough for a good commercial peach. Ripens here in August.

**HAD GOOD SUCCESS WITH GREEN'S FRUIT**

Green's Nursery Co.: I had such good success with your fruit trees planted on four lots in town that I decided to start fruit-growing on a larger scale and have now about 600 fruit trees planted, all in a very thriving condition. I expect a nice crop of peaches next year. Twelve years ago I bought 7 Elberta peach trees from your nursery, which are still bearing. At the age of 7 years I sold 56 baskets of choice peaches from those 7 trees, besides all we used for canning and eating, which was a lot. The next year we sold 64 baskets from the same trees. To show that the peaches are O. K. we received first prize for a plate of them at the Allentown Fair. You may have better records from your trees at other places, but we surely are well satisfied with ours.—Lewis O. Roth, Slatington, Pa., August 1, 1926.

**PEACHES WON PRIZE**

Green's Nursery Co.: We had elegant peaches from one of your trees last fall, Elbertas I think. They took first prize at the Westminster Cattle Show.—Miss Lillian McAllester, 53 Summer St., Gloucester, Mass., April 14, 1926.

**BEST TREES EVER SEEN**

Green's Nursery Co.: Allow me to thank you for being so prompt in sending my order. Your trees are the best I have ever seen and I have been planting trees for 30 years. I will tell my friends about your trees and expect to place an order with you for trees for 7 acres of land.—N. L. Duncan, Fishers Island, N. Y., April 27, 1925.

**THANK YOU**

After you have made out your order and are through with this catalog, please hand it to some good friend or neighbor. You will be doing us a great favor, and your friend and neighbor a favor as well.



**Green's Assorted Fruit Tree Collection**

7 Assorted Fruit Trees for \$4.75

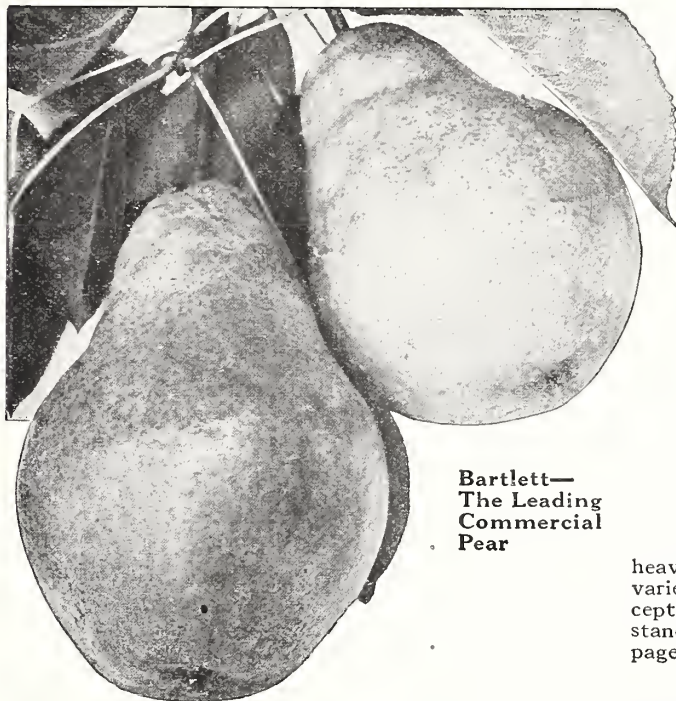
- 1 Royal Apricot, 3 to 4 ft.
- 1 Rochester Peach, 3 to 4 ft.
- 1 York State Prune, 4 to 5 ft.
- 1 McIntosh Dwf. Apple, 3 to 4 ft.
- 1 Duchess Dwf. Pear, 3 to 4 ft.
- 1 Blk. Tartarian Sweet Cherry, 5 to 6 ft.
- 1 Montmorency Sour Cherry, 4 to 5 ft.

Unusual Value at . . . . . **\$4.75**

Cannot Be Sent by Parcel Post

# Pears

## Thoroughly Tested Varieties



**Bartlett—  
The Leading  
Commercial  
Pear**

EVERY home orchard should have a few pears. Pears have delicious eating qualities and are excellent for canning. Their much deserved popularity makes them a fine market crop. There are but a few varieties which have the qualities essential to a real good Pear. After years of experience, careful investigation, and thorough testing, we have developed this list of selected varieties. They are the cream of the hundreds of varieties known to mankind. We recommend all of them, too, without hesitation.

Nearly all of these varieties do well on both standard and dwarf roots. The descriptions apply to both except that the dwarfs are naturally lower-growing trees. They also come into bearing sooner and the fruit, as a rule, is of larger size. Standard pear trees are usually planted 20 feet apart each way and dwarfs 10 feet apart each way. Pear trees do well on almost any type of soil, but seem to prefer a heavy clay land for best results. We can furnish all varieties described, in both standard and dwarf trees, except Bosc, Kieffer, and Sheldon, which are grown only on standard roots. For prices of dwarf pear trees, see page 15.

### Prices of Green's Standard Pear Trees

ALL VARIETIES EXCEPT BOSC AND WORDEN SECKEL

Age	Height	Each	10	50
2 yrs. old, Well Branched	3 to 4 ft.	\$.65	\$5.00	\$20.00
2 yrs. old, Well Branched	4 to 5 ft.	.80	7.00	30.00
2 yrs. old, Well Branched	5 to 7 ft.	.95	9.00	40.00

Parcel Post Size: First-class trees, 2 to 3 ft. high, can be sent by parcel post for 70 cents each, postpaid.  
 RATES—Less than ten standard pear trees at each rates. Ten to fifty at ten rates. Fifty or more at fifty rates.

## Summer Pears

**BARTLETT**—The most popular pear both for home use and market, a leader among canning pears, commands top prices. Should be in every garden and orchard. Large, golden yellow with reddish blush on the sunny side. Flesh tender, melting and juicy, with a delicious musky flavor. Tree vigorous, an erect grower, bears abundantly. Ripens in September.

**CLAPP'S FAVORITE**—The most productive pear in cultivation. Very good for the home garden and a desirable commercial variety. Large, long, pale lemon color richly flushed with russet red on the exposed side. Flesh fine-grained, juicy, melting and buttery. A good grower and hardy. Ripens here in August about ten days ahead of Bartlett.

**WILDER EARLY**—One of the very earliest pears, it always finds a ready sale in the market and is largely grown by commercial orchardists. Of medium size, pale yellow shaded with russet red, flesh melting and delightful, with a small core. The trees are good bearers, bearing annually. Ripens in early August. This variety was introduced by Charles A. Green several years ago.

## Autumn Pears

**ANJOU (Buerre d'Anjou)**—A large greenish pear, shaded with russet-crimson. The flesh is buttery and melting, with a sprightly vinous flavor. Trees are vigorous and productive. One of the best varieties for late fall and early winter use. Ripens in October and keeps until mid-winter.

### STANDARD PEAR COLLECTION

4 Standard Pear Trees  
 4 to 5 ft. high—all for \$2.95

1 Bosc  
 1 Bartlett  
 1 Clapp's Favorite  
 1 Seckel

Bargain Collection Price . . . **\$2.95**

Cannot Be Sent by Parcel Post

For Prices on Dwarf Pears, See Page 15



**Autumn Pears—Continued**

**BOSC (Buerre Bosc)**—Without a doubt the highest quality and best-flavored pear of all. Should be in every home garden. Very large, having a distinct gourd shape—roundish at the blossom end with a long, thin, tapering neck. Beautiful golden russet color. Flesh fine-grained, juicy and melting, very delicious and highly flavored. In great demand at fancy fruit stores, often selling as high as 10 cents apiece. We grow it as a standard tree only as it does not do well grown as a dwarf. The tree is a moderate grower, fairly erect and rather productive. Ripens here in late September or early October.

**Prices of Bosc and Worden Seckel Standard Pear Trees**

Age	Height	Each	10
2 yrs. old, Well Branched	3 to 4 ft.	\$.75	\$ 6.00
2 yrs. old, Well Branched	4 to 5 ft.	1.00	9.00
2 yrs. old, Well Branched	5 to 7 ft.	1.20	11.00

Parcel Post Size: First-class trees, 2 to 3 ft. high, can be sent by parcel post for 80 cents each, postpaid.

**DUCHESS (Duchess d'Angouleme)**—This variety does exceptionally well when grown as a dwarf on quince roots, and we advise our customers to plant dwarf trees of Duchess in preference to standard trees. As a dwarf it is an all around, profitable, market variety, very prolific and a dependable cropper. It is an early bearer, often fruiting the season after planting. The fruit is very large, larger on dwarf than on standard trees. The color when fully ripe is bright golden yellow with a blush on one side and sometimes slightly russeted. Flesh white, juicy, and of good quality. An excellent keeper. On dwarf roots it is an excellent commercial variety. In season here in October.

**SECKEL**—The small size and peculiar, rich, juicy flavor of this variety make it a most desirable variety for pickling and preserving. It is generally conceded to be the sweetest of all pears and is greatly prized as a dessert

fruit to eat fresh out of the hand. Although small in size it is very attractive in appearance, being of a russet-yellow color with a bright red cheek. It is very prolific. Every home orchard should have a tree or two of this excellent variety. In season in September and October.

**SHELDON**—A pear of unusually good quality and high flavor. Large, round, greenish-yellow in color, covered with light russet. It is very juicy, melting and has a tasty flavor. The tree is a fine grower and a good bearer. It is not recommended as a commercial variety as the fruit has a tendency to drop before ready to pick. Grown only as a standard tree as it does not grow successfully on dwarf roots. In season here in October and November.

**WORDEN SECKEL**—An improved Seckel. Equal in quality to its famous parent, which it much resembles in flavor. It is fully as luscious, more juicy, and with an aroma equally as rich and inviting. The fruits are beautifully smooth and regular, golden yellow with a russet-red cheek. Ripens in October and will keep until Christmas.

**Late Autumn and Winter Pears**

**KIEFFER**—A very profitable market variety on account of its great productiveness and its excellent keeping and shipping qualities. While only fair in quality, it is an excellent canner and is in great demand for this purpose. The fruit is large, golden yellow sometimes tinted with red on the exposed cheek. The trees are strong, vigorous growers and very healthy. Ripens in October and November. Grown only as a standard tree as it does not do well on dwarf roots.

**LAWRENCE**—A long-keeping winter pear that should be planted more extensively. The fruit is medium to large, golden yellow, melting and aromatic. The trees are moderate growers but abundant bearers. A profitable market variety. Ripens in November.

**THIS GROWER FAVORS OUR PEAR COLLECTION**

Green's Nursery Co.: In 1917 I cleared four acres of old orchard land and planted your trees. I must commend you on the nice trees that are memorials to your craft, especially the pear collection, which is the best that grows. Everyone admires a well-kept orchard near a big city and my gospel is "Plant Green's Trees." There's a reason.—M. A. Oehm, Crafton (Pittsburgh), Pa., January 19, 1926.

**DWARF FRUIT TREE COLLECTION**

4 Dwarf Fruit Trees  
4 to 5 ft. high—all for \$2.95

- 1 McIntosh Dwarf Apple
- 1 Oldenburg Dwarf Apple
- 1 Clapp's Favorite Dwarf Pear
- 1 Duchess Dwarf Pear

Special Price . . . **\$2.95**

Cannot Be Sent by Parcel Post



**Bosc—Unexcelled in Flavor and Quality**

*If You Don't Know, Ask Your Neighbor. He's Probably a Customer of Green's*

# Dwarf Pear Trees

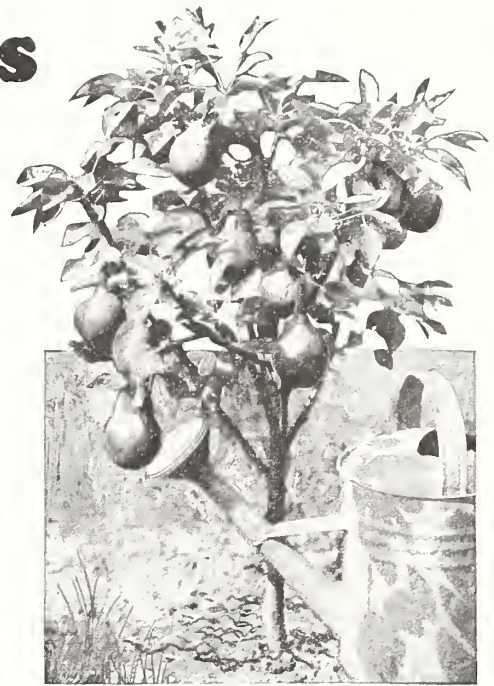
**Usually Start Bearing Second Season After Planting**

**D**WARF pear trees are particularly valuable for the city or village garden where space is limited, as they can be grown very closely together and permit a large assortment of varieties to be planted in a very small area. The dwarfish habit of the trees permits easy picking from the ground without the use of ladders.

The trees come into bearing sooner than standards, usually bearing the second season after planting. The color, quality and flavor of the fruit is identical with that produced on standard trees, but is as a rule larger in size. The trees are very productive, hardy and vigorous.

Dwarf pear trees are grown on quince roots and should be planted deep enough to cover the junction of pear and quince 2 or 3 inches.

The side branches should not be removed higher than a foot from the ground, but the tops and ends of the branches should be pruned severely every spring, removing one-half or nearly all the past season's growth. Dwarf pears are usually planted 10 feet apart each way. For a description of varieties, see the preceding pages devoted to standard pears. We grow all varieties on quince (dwarf) roots except Sheldon, Bosc and Kieffer. The Duchess seems to do remarkably well on quince roots and many profitable orchards of Duchess dwarf pears have been planted throughout the country. We recommend Duchess very highly as a commercial variety if planted as a dwarf.



**Clapp's Favorite**  
(See letter, this page.)

## Green's Dwarf Pear Trees at Attractive Low Prices

Age	Height	Each	10	50
2 yrs. old, Well Branched	3 to 4 ft.	\$ .65	\$5.00	\$17.50
2 yrs. old, Well Branched	4 to 5 ft.	.75	6.00	22.50

Parcel Post Size: First-class trees, 2 to 3 ft. high, can be sent by parcel post for 60 cents each, postpaid.  
RATES—Less than ten dwarf pear trees at each rate. Ten to fifty at ten rates. Fifty or more at fifty rates.

## The Dwarf Pear Hedge

**Plenty of Fruit—Small Cost—Takes Up Little Room**

Our C. A. Green several years ago planted a row of dwarf pear trees across the center of his vegetable garden. These trees were planted only three feet apart. They have thrived amazingly and have borne bountiful crops each year. When in bloom they make an extremely ornamental hedge row and attract wide attention. A vast amount of fruit can be grown on a single row of dwarf pears. The

trees, of course, do not grow as large as when planted farther apart, as this close planting permits them to grow in two directions only. Many others have followed Mr. Green's example and advice. *Read below what they have to say about a dwarf pear hedge.*

List of varieties we can supply in Dwarf Pears:

Anjou	Lawrence
Bartlett	Seckel
Clapp's Favorite	Wilder Early
Duchess	Worden Seckel

## GREEN'S FAMOUS DWARF PEAR COLLECTION



**4 Dwarf Pear Trees**  
4 to 5 ft. high—All for \$2.65

1 Bartlett                      1 Duchess  
1 Clapp's Favorite          1 Seckel

**Special Price . . \$2.65**

Cannot Be Sent by Parcel Post

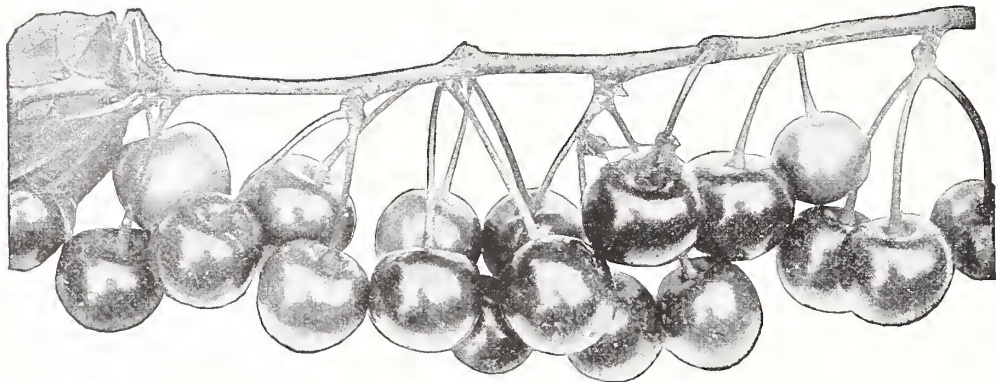
## A MARVELOUS SIGHT

Mt. Clemens, Michigan.

My Dear Mr. Green:

About two or three years ago I bought from your company among other things a few dwarf pear trees which I planted, according to your suggestion, in a hedge row—from the back porch steps to the garden gate. The enclosed pictures (see photograph above) are ones of the little trees, Clapp's Favorite, one of them showing an ordinary-sized sprinkling can alongside of tree for comparison. The little tree measures just thirty inches from the ground to tip of highest branch, and started out this spring with 27 pears, of which 10 matured into fine, large, luscious pears. Everyone who saw the tree with fruit on it, marveled at the sight, and some felt like the farmer who said: "There ain't any such animal."

JOHN A. HENK.



Early Richmond Cherry

# Cherries

## Are Profitable and Popular

**D**UE to the rapidly increasing demand for fruit juices, cherries are becoming more profitable every year. Orchardists who plant cherries now can with reasonable assurance look forward to big returns on their investment. Cherries are easy to grow and very prolific. Plant them in sandy or gravelly loam for best results, although they will be quite successful anywhere if the roots are not wet. Practically no pruning is necessary except for the formation of a head. Every home garden should have at least a tree or two of both the sweet and sour varieties. Sour varieties are usually planted 15 feet apart each way, and sweet varieties 20 feet apart each way.

### Sour Cherries

Sour cherries are of slower growth, do not attain so large a size and are more hardy than sweet varieties. As a rule, they are more profitable commercially than the sweets.

#### Prices of Green's Sour Cherry Trees

Age	Height	Each	10	50
2 yrs. old, Well Branched	3 to 4 ft.	\$.70	\$5.50	\$22.50
2 yrs. old, Well Branched	4 to 5 ft.	.85	6.50	27.50
2 yrs. old, Well Branched	5 to 6 ft.	.95	7.00	32.50

Parcel Post Size: First-class trees, 2 to 3 ft. high, can be sent by parcel post for 65 cents each, postpaid.

RATES—Less than ten sour cherry trees at each rates. Ten to fifty at ten rates. Fifty or more at fifty rates.

**EARLY RICHMOND**—The best of the early sour varieties. While not in as great demand for canning as Montmorency, it makes a good canned product and is used largely to extend the canning season on account of its earliness. Medium size, light red changing to dark red, tender, juicy and of good quality. Vigorous, healthy and fruitful. Ripens in June.

**ENGLISH MORELLO**—The standard late sour cherry, the best of its season. A little too acid to eat fresh out of hand, but one of the best for culinary uses. Cooked, the fruit has a rich, dark, wine color, very attractive in appearance, and a most pleasant, sprightly, aromatic flavor. The fruit is very dark red, becoming almost black in color. The trees are hardy and very dwarfish in habit. Ripens in August.

**MONTMORENCY**—The most popular sour cherry grown in America—at least three-fourths of all the sour cherry trees grown are of this variety. It leads in demand for this fruit in the markets, for the cannery and for home use as a culinary cherry. It is surpassed by no other sour cherry in vigor, health and productiveness. The preserved product, whether canned at home or commercially, is attractive in appearance and very good. For any and all purposes to which sour cherries are put Montmorency may be recommended as the best. The fruit is about average in size, rather dark red, tender, juicy and of very good quality. Hardy and very productive. Ripens last of June.

## Special Cherry Tree Collection

4 Cherry Trees for \$3.20



- 1 Black Tartarian . . . . . 5 to 6 ft.
- 1 Napoleon . . . . . 5 to 6 ft.
- 1 Montmorency . . . . . 4 to 5 ft.
- 1 Early Richmond . . . . . 4 to 5 ft.

Attractively Priced at **\$3.20**

Cannot Be Sent by Parcel Post



## Sweet Cherries

Sweet cherries are strong and vigorous growers, making large, open, spreading heads or tops, are better suited to the purpose of shade, and produce large, heart-shaped, sweet fruit. Often called Oxheart cherries.

### Prices of Green's Sweet Cherry Trees

Age	Height	Each	10	50
1 yr. old	3 to 4 ft.	\$.70	\$5.50	\$22.50
1 yr. old	4 to 5 ft.	.80	7.00	27.50
2 yrs. old, Well Branched	4 to 5 ft.	.90	8.00	.....
2 yrs. old, Well Branched	5 to 6 ft.	1.00	9.00	.....
2 yrs. old, Well Branched	6 to 7 ft.	1.10	10.00	.....

Parcel Post Size: First-class trees, 2 to 3 ft. high, can be sent by parcel post for 75 cents each, postpaid.

RATES—Less than ten sweet cherry trees at each rates. Ten to fifty at ten rates. Fifty or more at fifty rates.

**BING (Dark Red)**—Few sweet cherries equal Bing in size and attractiveness, and none equal it in quality. Very dark red, almost black in color. Very meaty. Ripens in July.

**BLACK TARTARIAN (Black)**—The favorite home garden sweet cherry. Best for table use. Produces immense crops of heart-shaped cherries, bright, glossy, purplish black. Flesh tender, juicy, rich, and of best quality. Ripens middle of June.

**GOVERNOR WOOD (Yellow)**—We highly recommend this variety for the home garden on account of its earliness, beautiful appearance and delicious flavor.

Large, beautiful, yellowish-white tinted with shades of crimson, with conspicuous russet dots. The flesh is tender, juicy, with an abundance of colorless juice and a flavor that has given it a reputation of being one of the best in quality. Ripens in June.

**NAPOLEON (Light Red)**—Sometimes called Royal Ann. By virtue of its large size, handsome appearance and high quality, probably the leading sweet variety. Extremely popular as a canning cherry and very good for all culinary uses. Color bright red on a yellowish background. The flavor is rich and sweet, which, with the abundant juice and firm, crackling flesh, makes it a most delicious and refreshing cherry for dessert and home uses. Ripens in July.

**WINDSOR (Dark Red)**—The leading late sweet cherry. The hardest of the sweet varieties. Large, very dark red, with firm, tender, juicy flesh. Prolific and of excellent quality. Ripens in July.

### WE GROW OUR OWN TREES ON OUR OWN FARMS

We have received letters from our patrons and prospective patrons, stating that they had been advised by tree agents and others of our competitors that we did not grow any of our trees but bought them of other nurseries. In contradiction of this statement, we want to say, that with the exception of a few varieties, we grow everything we sell, and it is grown on our own farms.

We have three farms southwest of this city. The first one contains 134 acres. The next contains 70 acres, and the third contains 100 acres. A short distance west of Rochester we have four separate small farms totaling in all 50 acres.

We do not grow everything on one farm, because different kinds of trees require different soil. For instance, a peach tree grows best on a light soil and a pear tree on a heavy soil, and we grow only that class of tree on each soil that is best adapted to that particular soil.

On these farms we have houses for 20 families, and the nearest village to one of our farms is made up almost entirely of our employees. We have extensive buildings for storage and other purposes, which we are constantly enlarging to meet our requirements.

So if anybody tries to persuade you that we do not grow our own trees, we would like to have you invite them to visit us, and we will prove to them that we DO grow our own trees.

### MADE EXTRA FINE GROWTH FIRST YEAR

Green's Nursery Co.: Enclosed please find \$18.05 for fruit trees. Am glad to state that the 52 cherry trees which I bought from you last year are all living and made a remarkable growth. —John E. Gray, DuBois, Pa., April 13, 1925.



Napoleon or Royal Ann

Over Two Hundred Thousand Satisfied Customers. This Speaks for Itself



# Plums

## Are Easy to Grow

**F**EW people realize how easy it is to grow luscious, edible, plums. Plums thrive and bear readily on most any land that is not too wet. In fact, most plum trees need thinning to prevent over-bearing, the consequences of which are branch breakage and smaller fruit. This is a selected list of varieties chosen for the size, appearance, and flavor of their fruit and the hardiness and strong-growing characteristics of the trees.

Our plums are all grown on plum roots and are hardier and longer-lived than those on peach roots. For a commercial orchard, plant plum trees 20 feet apart each way. In a garden where space is limited, plums can be set 10 feet apart if pruned annually.



### Prices of Green's Plum Trees

Age	Height	Each	10	50
2 yrs. old, Well Branched	3 to 4 ft.	\$.60	\$4.50	\$15.00
2 yrs. old, Well Branched	4 to 5 ft.	.70	5.50	20.00
2 yrs. old, Well Branched	5 to 7 ft.	.85	6.50	25.00

Parcel Post Size: First-class trees, 2 to 3 ft., can be sent by parcel post for 65 cents each, postpaid.

RATES—Less than ten plum trees at each rates. Ten to fifty at ten rates. Fifty or more at fifty rates.

**BRADSHAW (Purple)**—Sometimes called Niagara. Probably the most largely planted plum in the East. The trees are large, hardy, bear regularly and heavily and are robust, well-formed and healthy. The fruit is of good quality, large, attractive, and keeps and ships well, especially if picked when a little green. Skin a dark reddish-purple. Flesh yellow, juicy, sweet and pleasant. Semifreestone. Ripens in August.

**BURBANK (Red)**—One of the leading Japanese varieties.

The fruit of this plum is very large—often 5 to 6 inches in circumference—and of a very attractive cherry-red color. A good keeper and shipper. Its yellow flesh is meaty, firm, juicy and sweet. The tree is very vigorous and spreading and needs close pruning. Ripens in late August. In addition to our regular grades of two-year-old trees, we can furnish Burbank in one-year-old trees, 3 to 4 ft. high, at 60 cents each, \$4.50 per 10, \$15.00 per 50; 4 to 5 ft. high, 70 cents each, \$5.50 per 10, \$20.00 per 50.

**GERMAN PRUNE (Purple)**—German Prune reproduces itself very close to type from the seed. As a result of this many strains of the old German Prune have been

### Lombard— A Great Favorite

developed. York State Prune is the most desirable of all and is the only strain we offer. See description of York State on the following page.

**GUEII (Purple)**—Sometimes called Blue Magnum Bonum. Not a high quality plum but a money-maker as it bears early and abundantly and comes on the market earlier than other good shipping plums. Dark purplish black with thick bloom. Flesh yellow, sweet and of fair quality. Trees large, hardy, healthy, and vigorous. Ripens in early September.

**LOMBARD (Purple)**—A great favorite as it adapts itself to widely different soils and climates and does well where other varieties would not thrive. Robust, healthy, productive and a regular bearer. Extremely hardy. Not of the very highest quality, but does very well for canning, cooking and preserving. Skin dark purplish red over-spread with a thick bloom. Flesh yellowish, firm and sweet. Freestone. Ripens in late August.

**MONARCH (Purple)**—A very handsome, large, rich, purple plum that has attained popularity more quickly than any other plum of recent introduction. Flesh golden yellow, juicy and sweet. Trees hardy and productive. Ripens in October.

**SHIPPERS (Shipper's Pride) (Purple)**—Quite popular with many fruit growers here in the East, but in our opinion not large enough or high enough in quality to rank it with one of the leaders. Color, purplish black over-spread with thick bloom. Flesh greenish yellow, firm and sweet. Keeps well and ships a very long distance. Trees hardy and productive. Ripens in September.





**SHROPSHIRE (Shropshire Damson) (Purple)**—This grand old variety is the best known of the Damsons and is greatly prized both for canning and preserving. Enormously productive, vigorous, hardy and healthy. Dark purplish black overspread with thick bloom, with golden flesh, juicy, agreeably tart and of good quality. Ripens in October.

**YELLOW EGG (Yellow)**—An extremely large and handsome yellow plum worthy of consideration by either the amateur or commercial fruit grower. Golden yellow covered with thick bloom. Flesh firm, sweet, rather juicy. Only fair in quality and is prized more for culinary use than for eating out of the hand. Trees large, vigorous, hardy and very productive. Ripens in late August.

**YORK STATE PRUNE (Purple)**—A superior strain of the German Prune. Known in some sections as Felleberg or Italian prune. The most widely grown of all plums. In our opinion the most profitable prune for orchard purposes and a variety that should be in every home garden. It is finely flavored whether eaten out of hand, stewed or cured as a prune. In cooking it changes



York State—The Leading Commercial Prune

**GREEN'S PLUM TREE COLLECTION**

4 Plum Trees  
5 to 7 ft. high—  
all for \$2.95



1 Bradshaw  
1 Burbank

1 York State Prune  
1 Lombard

Special Price . . . . . **\$2.95**

Cannot Be Sent by Parcel Post



Bradshaw—Best for Eating Fresh Out of Hand

to a dark wine color, very attractive in appearance, with a most pleasant sprightly flavor. The trees are large, hardy, productive, well formed and bear regularly. Purplish black overspread with a thick bloom. Flesh yellow, juicy and of best quality. Freestone. Keeps and ships well. Ripens here in September.

**JOIN OUR CAMPAIGN**

Did you ever stop to think that:

No matter how valuable your land—no matter how much it cost per acre—

No matter how much you weed, dig, hoe, or cultivate—

No matter how deep you plow, or how much you disc or harrow—

No matter how much the sun shines, or how much it rains, how much you irrigate or water—

No matter how ideal the weather conditions, how much you fertilize or manure—and every one of these things represents real cash money—it is all lost and wasted and the effort is for nothing, if in the first place you don't have the right kind of trees. Good trees cost the least and are the smallest investment you put into any field or garden. It's the smallest initial expense and counts for the most.

Join our campaign for good trees today. All we ask of you is one tree order to let us prove what our trees are, and we will make you a life customer.

Good trees are exactly like pure-bred live stock. Like begets like. You can't get good crops from poor, inferior, weak trees, any more than you can get good live stock from poor, inferior, ill-shaped, crooked-back, low-grade, stunted live-stock parents.

When you want to head any of your herds, you always pick out the best. You don't want weaklings. It is exactly the same with trees.

You can't afford to take a chance buying the poor trees.

Buy Direct from Green's Nurseries and Save Fifty Cents on Every Dollar

# Apricots

## Of Delicious Flavor

THE apricot is a cross between the peach and the plum. In shape and color, it resembles the peach, but in texture and smoothness of its skin, it is more like the plum. Apricots have a delicious flavor and, in addition to being very desirable for eating fresh, they are much prized for canning and drying. The trees usually begin to bear two years after planting. Plant 15 feet apart each way.

### Green's Apricot Trees are Low Priced

Height	Each	10
3 to 4 ft., Well Branched	\$.75	\$6.50
4 to 5 ft., Well Branched	.95	8.50

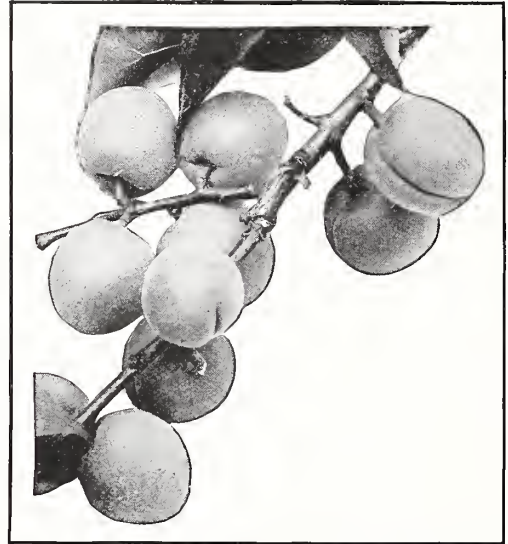
Parcel Post Size: First-class trees, 2 to 3 ft. high, can be sent by parcel post for 65 cents each, postpaid.

RATES—Less than ten apricot trees at each rates. Ten or more at ten rates.

ROYAL—There are several varieties of apricots but they are all very much alike in general characteristics. We offer only this variety as we consider it the best, Large, roundish-oval; pale orange with faintly-tinged red cheek. Flesh yellow, firm, sweet, highly flavored, slightly subacid, good quality, rich and juicy. Ripens late in July.

### WHERE HIGH QUALITY SHOWS

Green's Nursery Co.: Your shipment of fifty trees arrived O. K. and despite an extremely dry season I never lost a tree. Your packing and balling were the best I ever saw. John F. Crissinger, New Windsor, Maryland, June 7, 1926.



Apricots—Much Prized for Canning and Drying

# Quinces

## That Will Bear Heavily

QUINCES ought to be grown more largely, as there is no finer fruit for jellies, preserves and canning. They are easy to grow and need little attention and find a good sale in all local markets. Plant quinces 10 feet apart each way.

### Low Prices on Green's Quince Trees

Age	Height	Each	10
2 yrs. old, Well Branched	2 to 3 ft.	\$1.00	\$ 9.00
2 yrs. old, Well Branched	3 to 4 ft.	1.25	11.50

Parcel Post Size: First-class trees, 2 to 3 ft. high, can be sent by parcel post for \$1.05, postpaid.

RATES—Less than ten quince trees at each rates. Ten or more at ten rates.

ORANGE—We offer only this variety of quince as we consider it by far the best. There are several strains of this old-fashioned Orange quince and we are propagating from the most desirable strain. The fruit is large, roundish, bright golden yellow, cooks tender and is of excellent flavor. An excellent variety for baking and preserving. The trees are vigorous and productive. Ripens in late September or early October.

# New American Mulberry

Produces delicious fruit, very large, black, sweet, rich and excellent. Vigorous and productive. The best of the edible mulberries. Fruit ripe from middle of June to September.

New American Mulberry, 5 to 6 ft. . . . . \$1.25 each



Quince—Excellent for Jelly and Preserves

See New Low Prices on Cortland Apple Trees, Page 7

# Nuts

## A Sound Investment

**P**LANT your waste land to nut trees as an investment for future generations. They require practically no attention and can be grown on land too rough to otherwise develop. The nuts are always in great demand and, considering the cost of operation, they are even more profitable to grow than apples. The wood of the nut trees is exceedingly valuable and always in great demand.

**ENGLISH FILBERT (Hazelnut)**—A low-growing bushy tree, producing abundant crops of roundish, tender nuts of nice flavor, greatly prized for home use and used extensively in the manufacture of candy. Will grow in almost any location but prefers a rather moist soil such as can be found along brooks or streams. Nuts larger and of better quality than the native American Filbert.

**Prices of English Filbert (Hazelnut)**—2 to 3 feet, 60 cents each, 10 for \$5.50; 3 to 4 feet, 70 cents each, 10 for \$6.50. Parcel post size, 12 to 18 inches, 55 cents each, postpaid.

**JAPAN WALNUT (Siebold)**—This is a very hardy variety, will stand 20 degrees below zero without injury, a rapid-growing, handsome tree which bears young and abundantly. The shell is but a little thicker than that of the English walnut, the meat of which comes out whole and is of excellent quality. This variety begins to bear when two or three years old.

**Prices of Japan Walnut (Siebold)**—3 to 4 feet, 90 cents each, 10 for \$8.50; 4 to 5 feet, \$1.10 each, 10 for \$10.00.

**ENGLISH WALNUT**—A fine lofty-growing tree with handsome, spreading head. Produces large crops of thin-shelled, delicious nuts, which are always in demand at good prices. We offer a hardy seedling strain grown from nuts secured from a successful grove a few miles from Rochester. The trees are grown here and have been



A Dish of English Walnuts

thoroughly acclimated to our cold winters. Will do well in climates not too severe for peaches.

**Prices of English Walnut Trees**—2 to 3 feet, \$1.00 each, 10 for \$9.00; 3 to 4 feet, \$1.25 each, 10 for \$11.50. Parcel post size, 1½ to 2 feet, 95 cents each, postpaid.

**BLACK WALNUT (Standard Strain)**—A fast-growing tree prized not only for its heavy crops of large, nutritious nuts, but also for its exceedingly valuable wood in great demand by furniture makers and gunsmiths.

**Prices of Black Walnut (Standard Strain)**—  
 3 to 4 ft. .... 50 cents each, 10 for \$4.50  
 4 to 5 ft. .... 75 cents each, 10 for \$7.00  
 5 to 6 ft. .... 85 cents each, 10 for \$8.00  
 6 to 8 ft. .... \$1.00 each.  
 Parcel post size, 2 to 3 feet, 50 cents each, postpaid.

**BUTTERNUT**—This rapid-growing, lofty-spreading tree is one of our finest native trees. Valued for its tropical appearance and beautiful wood. Produces large crops of long, nutritious nuts, greatly prized for home uses and in good demand by bakers and confectioners. Bears early.

**Prices of Butternut Trees**—3 to 4 feet, 60 cents each, 10 for \$5.50; 4 to 5 feet, 85 cents each, 10 for \$7.50; 5 to 6 feet, \$1.00 each, 10 for \$9.00. Parcel post size, 2 to 3 feet, 50 cents each, postpaid.

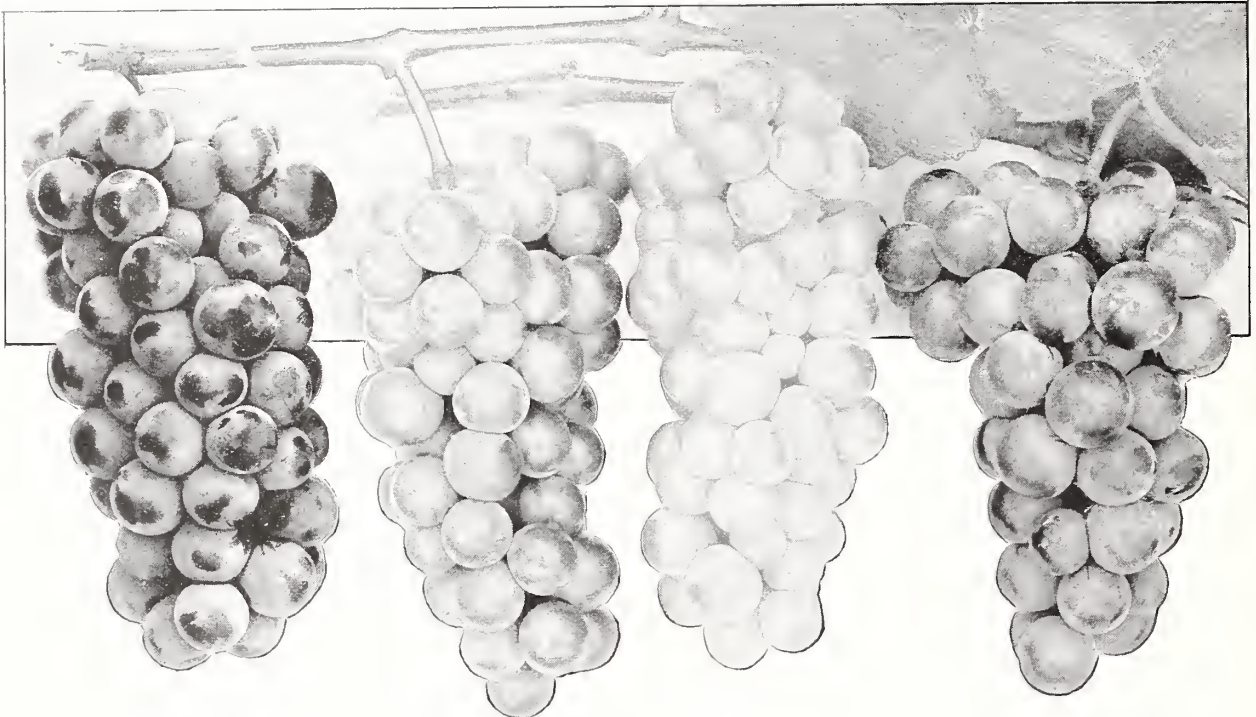
**AMERICAN FILBERT**—The common native Hazelnut. A low growing shrubby tree, 10 to 15 feet high, used largely for ornamental purposes. Make very attractive hedges. In the fall the trees produce abundant crops of delicious nuts.

**Prices of American Filbert Trees**—2 to 3 feet, 60 cents each, 10 for \$5.50. Parcel post size, 2 to 3 feet, 75 cents each, postpaid.



One Corner of a Block of Our Fruit Trees. Note the Clean Straight Trunks and Well-Shaped Tops

*Our Fruit Trees Are All Grown on Best Whole Root French Seedlings*



Worden (Black)

Lucile (Red)

Niagara (White)

Concord (Black)

# Grapes

## Popular and Profitable

**N**O fruit requires less attention or bears more heavily. A small arbor takes up almost no room, yet it can produce many splendid bunches of grapes. The rapidly-increasing demand for grape juice has made the commercial growing of grapes exceedingly profitable. Grapes are usually planted 8 feet apart each way.

### Green's Extra Size Two-Year-Old Vines

PRICES OF ALL VARIETIES EXCEPT CONCORD AND CACO

Extra Size, Two Years Old: 30 cents each, 10 for \$2.50, 25 for \$5.75, 50 for \$9.00

Parcel Post: Medium size, two-year-old grape vines of all varieties except Concord and Caco can be sent by parcel post, postpaid, for 25 cents each, \$2.00 per 10.

RATES—Less than ten grape vines at each rates. Ten to twenty-five at ten rates. Twenty-five to fifty at twenty-five rates. Fifty or more at fifty rates.

Only  
**30c**  
Each

**AGAWAM (Red)**—An excellent keeper that may be kept in common storage until January. Large in both bunches and berries, dull purplish red, rich, sweet and of a decidedly foxy flavor. Vigorous and moderately productive. Ripens here last of September.

**BRIGHTON (Red)**—A very handsome dark red grape of high quality that should be in every home garden. Not generally recommended as a commercial variety, as it will not ship to distant markets. Vigorous, productive and easy to grow. Ripens here about the middle of September.

**CAMPBELL'S EARLY (Black)**—The characteristics which give this grape its merit are high quality, free-

dom from foxiness, small seeds, earliness of maturity, large size and attractive appearance both of bunch and berry, hardness and good keeping qualities. Unfortunately, it is somewhat capricious as to soils and for this reason is not generally rated as a good commercial sort. Ripens here first of September.

**CATAWBA (Red)**—Of all the grapes grown in New York, Catawba is the best keeper, lasting until March or later. Because of its fine quality, it often brings a higher price than other varieties. Berries and bunches of medium size, dull, purplish red. Vines vigorous, hardy and productive. Ripens here last of September.

*Buy Hardy Northern-Grown Trees from Green's*

**CONCORD (Black)**—Without any question, the leading commercial grape on the continent. Due to its high degree of fruitfulness and its great adaptability to various soils, it can be produced so cheaply that no other grape can compete with it in the markets. Blossoms late and, therefore, seldom suffers from spring frosts. Grape juice is made almost entirely of Concord. Vines hardy and healthy. Bunches and berries of fair size, glossy black with abundant bloom, and of good quality. Ripens here middle to last of September.

**Prices of Extra Size Two-Year-Old Concord Vines:** 20 cents each, 10 for \$1.50, 25 for \$3.35, 50 for \$6.00, 300 for \$22.50. Medium size by parcel post, 15 cents each, \$1.00 per 10, postpaid.

**CACO (Red)**—This new red grape has the most delicious flavor and is of the highest quality of any grape that we have ever tested. It is one of the earliest grapes in ripening. It has a peculiar characteristic not common to other grapes in that, on account of its being so rich in sugar and excellent in flavor, it can be eaten with enjoyment fully two weeks in advance of its being fully ripe. In appearance, it is the most beautiful of hardy grapes, wine red in color with abundant bloom. The berries are unusually large, bunches of good size, compact and of good form. The vines are very strong, vigorous growers, hardy, healthy and prolific. This variety is a cross of the two well-known grapes, Catawba and Concord, and is said by expert grape-growers to have all the good qualities of both these varieties without the defects of either. Ripens here early in September. See illustration on inside back cover.

**Prices of Extra Size Two-Year-Old Caco Vines:** 60 cents each, 10 for \$5.00, 25 for \$11.25, 50 for \$20.00. Medium size by parcel post, 50 cents each, \$4.00 per 10, postpaid.

**DELAWARE (Red)**—A rich and delicately-flavored little red grape that is generally recognized as the standard of quality to judge other grapes by. An exceptionally desirable variety for home gardens on account of its compact habit of growth. Commands a premium in all the markets, often selling for twice the price of Concord. Very hardy. Ripens here about the middle of September.

**DIAMOND (White)**—(Moore's Diamond). The best white grape for the home garden. Unsurpassed in quality and beauty. Early, hardy, vigorous and productive. A very profitable commercial variety that would take first place among the white grapes as a commercial



Mr. Green Inspecting Our Field of 1-year-old Grape

**CACO BEATS THEM ALL**



Green's Nursery Co.: I owe you a report on Caco grapes which you kindly sent me in 1919. They exceed the Concord in growth and are about equal to that variety in fruitfulness, but in appearance and flavor they certainly beat them all. I expect great results from them when they reach their age of full capacity. Thus far I can only say that the Caco seems destined to hold a position among the red grapes as enviable as is that of the Concord among the blues. J. A. BISCHOFF, Holyoke, Mass.

Just think! These fine grapes for only **60c**

Note: See description for prices in quantities.

sort were it not for the fact that Niagara is even more productive. Should be in every home garden collection. Ripens here about the middle of September.

**LUCILE (Red)**—Recommended where an extra hardy grape is desired, and for localities where the season is short. Its foxy flavor, which condemns it to some, is considered an asset by many who like this foxy taste. Exceedingly productive, even more so than Concord. Large in both bunch and berry and very attractive in appearance. Quality considered fair to good. Ripens here early in September.

**McPIKE (Black)**—A good variety for the home garden. Vines vigorous, hardy and productive. Ripens here early in September.

**MOORE EARLY (Black)**—The best early black commercial grape, ripening as it does two or three weeks ahead of Concord. Vines vigorous, hardy and moderately productive. Bunch and berry medium to large. Fair to good in quality. Ripens here first of September.

**NIAGARA (White)**—The leading commercial white grape, not as high in quality as Diamond, but more productive. In great demand. Holds the place among white grapes that Concord holds among blacks. Bunches and berries large and handsome, compact, and of good quality. Vines vigorous, hardy and very productive. Ripens with Concord about the middle of September.

**WORDEN (Black)**—This is a seedling of the Concord and while its berries and bunches are larger and the fruit is of better quality, it is not as good a keeper and does not ship as well to distant markets. It is a superior variety for home use and for nearby markets, and, on account of its high quality and large size, usually brings a higher price than Concord. For home use we know of no grape of greater value. Fruit ripens one or two weeks earlier than Concord. Ripens here early in September.

**GREEN'S GRAPE VINE COLLECTION**

6 Extra Strong 2-Year Vines for \$1.50

- |                   |                     |                                  |
|-------------------|---------------------|----------------------------------|
| 1 Caco (Red)      | } Splendid Value at | By Parcel Post, \$1.80, Postpaid |
| 1 Concord (Black) |                     |                                  |
| 1 Niagara (White) |                     |                                  |
| 1 Worden (Black)  |                     |                                  |
| 1 Lucile (Red)    |                     |                                  |
| 1 Catawba (Red)   |                     |                                  |
|                   | <b>\$1.50</b>       |                                  |

See Illustration of Caco in Colors on Inside Back Cover

# Currants

## Big Money-Maker—Easy to Grow

**C**URRENTS grow so easily and bear so prolifically, they are considered a big money-maker for the market gardener. On our own fruit farm, we make more money out of currants (fruit) than any other crop with the possible exception of Columbian Raspberries. The currant is always in demand for making jellies, jams, preserves, pies, tarts, etc. The large amount of pectin contained in the fruit gives it that agreeable flavor and tartness for which it is so highly prized. Every home garden should contain a dozen or two of bushes of the leading varieties. Plant 4 feet apart each way.

### Green's Extra-Size Two-Year-Old Currant Bushes

#### PRICES OF ALL VARIETIES EXCEPT PERFECTION

Each	10	25	50	300
\$ .20	\$ 1.50	\$ 3.25	\$ 5.00	\$ 22.50

Parcel Post Size: Medium size bushes can be sent by parcel post for 15 cents each; \$1.25 per ten, postpaid.

RATES—Less than ten currant bushes at each rates. Ten to twenty-five at ten rates. Twenty-five to fifty at twenty-five rates. Fifty to three hundred at fifty rates. Three hundred or more at three hundred rates.

**DIPLOMA**—A variety of our own introduction that received the World's Fair Diploma at the Pan-American Exposition in 1901. In our opinion, it is the best of all the red varieties. We have fruited it largely at our fruit farms and have found it an exceedingly profitable currant. Recommended by the New York Agricultural Station as a variety well worth planting. Fruit very large, light red, sweet and unusually juicy. The bushes are strong, vigorous growers and exceptionally productive.

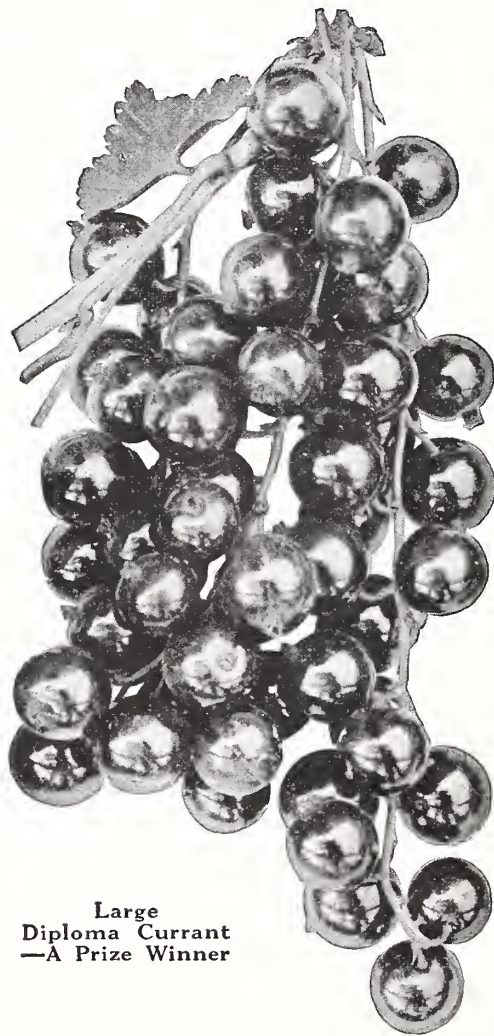
**FAY'S PROLIFIC**—This is an excellent red variety. Berries are above average in size, of excellent flavor and not very acid. The clusters are long-stemmed, which makes them easy to pick. Universally recommended by those who have had experience with it.

**PERFECTION**—This is an upright, strong grower, thickly covered with clusters of large fruit. In color it is a beautiful bright red, the berries averaging larger than most varieties, the clusters averaging longer, and the size of the berries is maintained to the end of the bunch. It has a rich, mild, subacid flavor with plenty of pulp and few seeds.

Each	10	25	50
\$ .40	\$ 3.50	\$ 8.00	\$ 15.00

Parcel Post: Medium size bushes can be sent by parcel post for 30 cents each, \$2.75 per ten, postpaid.

**RED CROSS**—A strong growing and exceedingly productive red currant. The clusters are long, with berries of medium size and of bright red color. This variety is un-



Large  
Diploma Currant  
—A Prize Winner

usually sweet for a currant, requiring less sugar in canning than other varieties.

**WILDER**—This is an excellent variety for the home garden. Few varieties equal it in productiveness and long-keeping qualities. Berries are bright red in color, large in size with good-sized clusters.

**WHITE GRAPE**—This is the best of all white currants. It is an excellent dessert variety because of its mildly acid flavor and large, handsome clusters of golden green or white berries. It is very prolific.

The wonderful new Cortland apple, awarded the Wilder Silver Medal for new fruit of perfection, is a fruit you should grow. See page 7.

*Plant Now for Pleasure and Profit*



## Gooseberries

### Will Pay You Well

**A**N exceedingly profitable fruit when properly handled. The market is rarely oversupplied, as gooseberries can be gathered and marketed through a very long season. Every home garden should have a dozen or two bushes, as gooseberries are very easy to grow, and the fruit is extremely desirable for cooking and other culinary uses. Plant gooseberries 4 feet apart each way.

**CHAUTAUQUA**—An excellent variety for the home garden. Large, greenish yellow, of excellent quality, sweet and high-flavored. Vigorous, upright bushes, hardy and productive. Extra size two-year-old bushes, 40 cents each, 10 for \$3.50, 25 for \$8.00, 50 for \$15.00. Medium size by parcel post for 35 cents each, \$3.00 per 10, postpaid.

**DOWNING**—The most profitable commercial variety on account of its great productiveness and remarkable shipping qualities. The fruits are large, pale green, and of excellent quality both for dessert and cooking. The bushes are vigorous, upright growers, keeping the fruit free from the ground. Mildew proof. Extra size two-year-old bushes, 30 cents each, 10 for \$2.50, 25 for \$5.50, 50 for \$10.00. Medium size by parcel post for 25 cents each, \$2.25 per 10, postpaid.

**RED JACKET (Josselyn)**—A large, bright red gooseberry of the best quality that can be planted with entire confidence. Vigorous, upright, hardy and very prolific. Extra size two-year-old bushes, 40 cents each, 10 for \$3.50, 25 for \$8.00, 50 for \$15.00. Medium size by parcel post for 35 cents each, \$3.00 per 10, postpaid.

## Blackberries

### Make Poor Lands Pay Profit

**T**HE ideal crop for obtaining money returns from poor lands. Will do well where other fruits could not hope to succeed. Plant 6 feet apart in rows 8 feet apart. Canes should be pinched back early when they are 3 to 4 feet high and only three canes should be allowed to a hill.

### Prices of Green's Strong Two-Year Blackberry Bushes

5	10	25	50	300
\$ .75	\$1.00	\$2.25	\$3.50	\$13.50

Parcel Post: Medium size by parcel post, 18 cents each; \$1.20 per 10, postpaid.

**BLOWERS**—A large, clean, bright berry of exceptionally good quality, with no perceptible core when fully developed. This is a first-class shipper, standing up well in the market for several days. The season of ripening is from the middle of July until frost, with the bulk of the crop maturing in August. The bushes are upright growers, are very hardy and enormously productive.

**ELDORADO**—An early to medium season berry of great merit. The bushes are hardy and very productive. The berries are large, jet-black, borne in large clusters and ripen well together. They are sweet and melting, have no hard core and keep for 8 or 10 days after picking without quality impaired. We consider this the best variety for home and market use.

**SNYDER**—A very popular early variety, possibly the hardest of all, and very productive. The berries are of medium size, sweet, melting and delicious.



## CURRENT AND GOOSEBERRY COLLECTION

13 Extra Strong 2-Year Bushes for \$2.25

5 Diploma Currants  
5 Red Cross Currants  
3 Chautauqua Gooseberries

Special Price . . . **\$2.25**

By Parcel Post, \$2.50, Postpaid

**RATES**—Five to ten at five rate. Ten to twenty-five at ten rate. Twenty-five to fifty at twenty-five rate. Fifty to three hundred at fifty rate. Three hundred or more at three hundred rate.



# Raspberries

## First in Commercial Importance

**R**ASPBERRIES are rightfully deserving as leaders in commercial importance among the bush fruits. They are easy to grow, require but little care and attention, yield good-looking, large-sized, richly-flavored fruits—a combination hard to beat. You can depend on any variety we list to produce fruit having all these desired qualities.

Plant Raspberries 4 feet apart in rows which are 6 feet apart. The old wood should be cut out as soon as it has fruited, and with the red varieties, thin out the suckers each spring to 5 or 6 on each hill. Black and purple varieties should be pinched back early when the canes are about 2 feet high. We advise all those except experienced commercial growers to plant the two-year-old transplanted bushes.

### Prices of All Varieties Except Syracuse and Latham

	5	10	25	50	300
Strong One-Year-Old Tip and Sucker Bushes	\$ .50	\$.80	\$1.75	\$3.00	\$12.00
Strong Two-Year-Old Transplanted Bushes	.75	1.00	2.25	4.25	18.00

### Prices of Syracuse and Latham

	5	10	25	50	300
Strong One-Year-Old Sucker Bushes	\$ .75	\$1.25	\$2.75	\$4.00	\$15.00
Strong Two-Year-Old Transplanted Bushes	1.00	1.75	3.50	5.50	21.00

**RATES**—Five to ten at five rates. Ten to twenty-five at ten rates. Twenty-five to fifty at twenty-five rates. Fifty to three hundred at fifty rates. Three hundred or more at three hundred rates.

**COLUMBIAN (Purple)**—At Green's Fruit Farm we have found this variety to be the most profitable of all. A strong grower and unexcelled for productiveness. An excellent shipper and in great demand for canning. Very large, dark reddish purple, rich, juicy and delicious. Ripens in midseason.

One of the fields of Columbian, from which our plants are taken, two acres in extent, netted in one season, \$2700.00.



Syracuse—Large and Luscious

A farmer nearby sold his entire crop of wheat from 40 acres for \$900.00. Mr. Adrian Voogdt, Sodus, N. Y., a year or two ago, picked 8350 quarts from two acres of Columbian and sold them for \$1,947.00. Mr. Henry Du Bois, of the same place, recently sold his crop from three acres for \$2,596.00, and the year previous for \$2,450.00.

**CUTHBERT (Red)**—An old favorite, probably the best known of any. Canes tall, vigorous and very productive. Berries large, handsome, rich crimson. A good shipper and of the best quality. Season medium to late.

**HERBERT (Red)**—This is probably the hardiest and most beautiful red raspberry grown. It originated at Ottawa, Canada, and has withstood without injury 40 degrees below zero. The cane of the Herbert is very strong and vigorous, the leaves large and healthy. Fruit oblong, very bright red, and probably the largest of all red raspberries except Syracuse. It is firm, sweet, subacid, juicy and of good flavor. Quality very good. Season begins a few days before Cuthbert. An exceptionally fine variety both for garden and commercial planting.

**LATHAM (Red)**—Sometimes called Redpath or Minnawaska No. 4. A new variety of great promise. It has been predicted by authorities that the Latham will soon take first place as a commercial sort, among the red varieties at least. Is being tested on the grounds of the New York Agricultural Station at Geneva, N. Y., and is very highly recommended by them. It is a splendid strong-growing variety and produces immense quantities of bright red, extra large berries from June until freezing weather. Reports received from the cold northwestern states indicate that this is an extremely hardy variety.

**PLUM FARMER (Black)**—In our opinion, the best of the black cap varieties. At Green's Fruit Farm it has not been surpassed in size or productiveness by any other black variety. Ripens early and quickly. Berries large, thick-meat, firm and of excellent quality. A profitable early market variety. Sells for the highest prices.

**SYRACUSE (Red)**—A new variety recently introduced by us. We consider it the very best red sort for the home garden and nearby market. Somewhat capricious as to soils, but on a good, rich garden soil it produces an abundance of extra large, bright red berries of exceptionally high quality and most delicious flavor. Grown under favorable conditions, we know of no other berry that will approach it in quality of fruit.

### GREEN'S RASPBERRY COLLECTION



40 Extra Strong Two-Year Old Transplanted Bushes All for \$2.25

- 10 Latham (Red)
- 10 Columbian (Purple)
- 10 Plum Farmer (Black)
- 10 Cuthbert (Red)

Special Price **\$2.25**

By Parcel Post, \$2.50, Prepaid

Parcel Post: Raspberry Bushes Can Be Sent by Parcel Post, Postpaid, for 2 Cents Additional to Above Prices



# Strawberries

## Pay Big Profits

**A**LL the varieties we offer are perfect-flowering and do not require another variety planted near them to make them productive. For garden culture set plants in rows two feet apart, with plants one foot apart in the row.

### Prices of Green's Strawberry Plants

	25	50	100
Corsican .....	\$1.00	\$1.50	\$2.50
Kellogg's Premier .....	1.00	1.50	2.50
Cooper .....	1.25	1.75	3.00
Progressive (Everbearing) .....	1.50	2.25	4.00

Parcel Post: Postage paid for 15 cents per 25, 20 cents per 50, and 25 cents per 100, additional to above prices.

RATES—Twenty-five to fifty at twenty-five rates. Fifty to one hundred at fifty rates. One hundred or more at hundred rates.

**COOPER (Perfect-flowering)**—Midseason. Plants extra large, strong growers, of a decidedly upright habit of growth, and exceedingly productive. The berries often referred to as the "biggest berries grown," are of a beautiful bright red color, firm and deliciously sweet in flavor.

**CORSICAN (Perfect-flowering)**—Midseason. We consider this the finest home garden berry. The plants are exceedingly vigorous and healthy, resisting disease, drought, weeds and even neglect of cultivation. The berries are large, bright red, firm, juicy and of exceedingly high quality and flavor. Exceedingly productive.

**KELLOGG'S PREMIER (Perfect-flowering)**—Early.

Unquestionably the best extra-early variety known. In all soils and climates it will be found producing enormous crops of uniformly large, deep red berries, which have made this variety famous.



Corsican—Our Favorite

**PROGRESSIVE (Everbearing)**—In our opinion the most desirable of the ever-bearing varieties. A strong, vigorous grower, producing medium large, dark red berries of delicious flavor. Produces one crop in June and, after a rest period in July, another crop in late summer and fall. To obtain the largest size and finest quality of fruit in the fall, keep flowers picked off until about the first of August.

## Green's Extra Large Trees for Quick Bearing

**W**E HAVE a few extra large size, four-year-old, transplanted fruit trees with unusually large, well-developed heads and very complete root systems. Very desirable for home garden planting where quick results are desired. Will bear very soon after planting. Order early as our supply of these extra large size trees is limited. We offer the following:

**Standard Apples:** Extra size—6½ to 7½ ft. high—\$1.50 each.

**Varieties:** Blenheim, Oldenburg, Fameuse, Gravenstein, Hubbardston, Jonathan, Tompkins King Rhode Island Greening, Stayman's Winesap, Wealthy, Rome Beauty, Winter Banana, Yellow Transparent.

**Dwarf Apples:** Extra size—4 to 6 ft. high—\$1.50 each.

**Varieties:** Oldenburg, Delicious, Winter Banana, McIntosh, Wealthy, Yellow Transparent.

**Standard Pears:** Extra size—6 to 7 ft. high—\$1.50 each.

**Varieties:** Bartlett, Sheldon, Seckel, Anjou, Wilder Early, Fameuse, Clapp's Favorite, Kieffer.

**Dwarf Pears:** Extra size—4 to 6 ft. high—\$1.50 each.

**Varieties:** Anjou, Clapp's Favorite, Duchess, Seckel.

**Plums:** Extra size—6 to 7 ft. high—\$1.50 each.

**Varieties:** Bradshaw, Burbank, Lombard, Shropshire Damson, York State Prune, Shipper's Pride, Monarch, Gueii, Yellow Egg.

**Cherries:** Extra size—5½ to 6½ ft. high—\$1.50 each.

**Varieties:** Montmorency, Early Richmond, English Morello.

**NOTE:** Order Now—the Supply Is Very Limited.

Your Order Will Be Appreciated and Carefully Filled

# Asparagus

## The Vegetable Aristocrat

**R**IGHTFULLY called the "vegetable aristocrat." No vegetable that we know of has its rich, refined, delicious flavor. You never will really know how delicious this vegetable can be until you go out into your own patch and within a short time after cutting, dish out the long, big stalks of this vegetable delicacy.

It is easy to grow asparagus. Asparagus does well in any good well-drained garden soil, with no extra preparation required. Simply work the soil well as you would prepare any garden for planting. Set the plants 1 foot apart in rows 2 feet apart, for garden culture. For field culture, the rows are usually 4 feet apart, with the roots 18 inches apart in each row. Our booklet "How to Plant and Prepare Your Asparagus" will be sent free on application.

### Prices of Green's Extra Size Two-Year-Old Roots

ALL VARIETIES EXCEPT WASHINGTON

25	50	300	1000
\$ .50	\$ .80	\$ 3.00	\$ 9.00

Parcel Post: Postage paid for 10 cents per 25, 20 cents per 50, 25 cents per 100 additional to these prices.  
 RATES—Twenty-five to fifty at twenty-five rates. Fifty to three hundred at fifty rates. Three hundred to one thousand at three hundred rates. One thousand or more at thousand rates.



Washington Asparagus—  
The New Rust-Proof Variety of Easy Culture  
—Very Productive

**CONOVER'S COLOSSAL**—Large, a strong grower, productive and of fine quality.

**PALMETTO**—The most popular variety both for home garden and commercial planting. Larger, more productive and earlier than Conover's Colossal.

**WASHINGTON**—A new rust-resistant variety of great promise that is being planted largely in this vicinity. The stalks are large, dark green, with a heavy purple overtone. The tips are tight and firm and do not open out until well out of the ground. Prices of Extra Size Two-Year-Old Roots: 25 for 75 cents, 50 for \$1.00, 300 for \$3.60, 1000 for \$11.00.

## Sage

**HOLT'S MAMMOTH**—Forms a dense mass of beautiful light green leaves used extensively for flavoring dressings and sauces. Set plants 3 feet apart each way. Prices of Strong Transplanted Roots: 35 cents each, 10 for \$3.00, 25 for \$6.00. By parcel post, postpaid, for 2 cents per root extra.



Rhubarb

## Rhubarb (Pieplant)

The first thing in the spring to furnish material for pie and sauce. Its health-giving, tonic properties make it invaluable as a spring regulator. Easy to grow. Should be in every home garden. Plant in rows 4 feet apart, with roots 3 feet apart in row.

**MYATT'S LINNAEUS** — The best variety for general use. Stems large, tender and of refined flavor. Yields abundantly. Prices of Extra Strong Two-Year-Old Roots: 15 cents each, 10 for \$1.00, 25 for \$2.25, 50 for \$4.00. By parcel post, postpaid, for 3 cents per root extra.

## Horse Radish

**ENGLISH or COMMON**—The variety in general use. Will stand a great deal of hardship and persist in soil year after year. Does best in deep, rich, cool soil. As high as ten tons have been received from an acre. Plant in rows 3 feet apart and 1 foot apart in row. Prices of Strong Sets: 25 for \$1.00, 50 for \$1.50, 300 for \$7.50. By parcel post, postpaid, for 5 cents per 10 extra.

### PREMIUM APPRECIATED

Green's Nursery Co.: I received my fruit trees in splendid shape. They are the best nursery stock I ever received. They were very well packed and I thank you for the premium. Everyone asks me where I bought my trees and I tell them from Green's Nursery Company of Rochester, N. Y. My friend received his trees at the same time and was more than satisfied. I planted his trees for him. There were about six other men present and they all said they never had seen any trees so nice before.—George Gauthier, North Chelmsford, Mass., April 21, 1926.

*Our Business Was Built by Recommendations of Satisfied Customers*

# Evergreens—For Year Round Effects

**D**UE largely to their regular and very pleasing outlines and the fact that they retain their foliage and color all the year around, evergreens have become exceedingly popular for private and public plantings. Their varied shades of blue, silver and green permit a most attractive combination of colors. Planted about the foundations of a home they hide the sharp outlines of the dwelling and form a very pleasing and striking background for shrubs and perennials, and in winter give an appearance of coziness and warmth not attained by any other class of trees.

**RATES**—Less than ten at each rate. Ten to fifty at ten rates. Fifty or more at hundred rates.

## Arborvitae

**AMERICAN ARBORVITAE (White Cedar)**—A beautiful pyramidal-shaped tree, which grows to a height of 40 feet when allowed to develop fully. Its deep green foliage is feathery and spray-like, becoming more dense after each shearing. It stands trimming well, and for this reason is widely used for hedges and screens—6 to 8 feet high. By annual shearing, a hedge of arborvitae can be kept at almost any height desired. It is hardy and dependable in almost any situation, but does best on a cool, moist soil. For a close, compact hedge, trees should be set 15 inches apart. Prices—1 to 1½ feet, \$1.00 each, \$7.50 for 10; 1½ to 2 feet, \$1.50 each, \$12.50 for 10; 2 to 3 feet, \$2.00 each, \$17.50 for 10.

**GLOBE ARBORVITAE**—A very dwarf and compact evergreen that grows naturally into an almost ball-like form about 2 to 3 feet high. Very desirable for planting in front of taller-growing varieties. Used extensively as single specimens, in groups for formal plantings about garden walk, and in vases. Specimens, 1 to 1½ feet, \$3.00 each.

**PYRAMIDAL ARBORVITAE**—An extremely narrow pyramidal-shaped evergreen with spray-like foliage, identical in character with the American arborvitae or white cedar. The growth is close, compact and regular. The beautiful dark green color is retained all winter. It requires little space, and, therefore, is very desirable for planting near the house in foundation plantings. Planted singly or in groups of two or three on either side of the entrance, or at the corners of the buildings and lawn, it breaks the sharp outlines and gives an extremely pleasing and ornamental effect and makes an attractive



background for other evergreens, plant evergreens. The arrangement of this delightful planting is as follows: Pyramidal Arborvitae at each side of steps and at corner; Silver Cedar, tall plants, beside Arborvitae; Pfitzer's Juniper, low graceful plants, by steps. Mugho Pine, low round-shaped plants, in front; Blue Spruce at corners in front.

background for other evergreens and ornamental shrubs. When fully matured, it reaches a height of 10 to 15 feet, but can be kept at almost any height desired by annual pruning in late August or September. Specimens, 1½ to 2 feet, \$3.00 each.

**SIBERIAN ARBORVITAE**—A dwarf conical-shaped evergreen with a broad globe-shaped base abruptly tapering to a rather blunt point. The foliage is dark green, heavy and deeply crested. Grows 6 to 8 feet in height at maturity, but can be kept lower by pruning. Much sought for foundation plantings and frequently for hedges. Makes a very desirable combination with the taller-growing pyramidal arborvitae. Originated in the famous royal gardens of England, but named Siberian on account of its extreme hardiness. Specimens, 1½ to 2 feet, \$3.00 each.

**TOM THUMB ARBORVITAE**—A small, compact, dwarf evergreen with feathery foliage. Very desirable for foundation plantings in front of taller kinds. Specimens, 1 to 1½ feet, \$2.50 each.



Globe Arborvitae  
Excellent for Foundation Planting

## Pine

**DWARF MUGHO PINE**—A dwarf globe-shaped evergreen never growing over 4 to 5 feet high. By annual shearing of the new growth, it can be kept as small as desired. A true dwarf grower, many-stemmed, compact, with good dark green foliage which is retained throughout the winter. Excellent for planting in front of taller evergreens, in foundation plantings, borders, etc. Its usefulness is almost unlimited. Specimens, 10 to 12 inches spread, \$4.00 each.

All Our Evergreens Sent Balled and Burlapped. No Additional Charge.



### Junipers

**PFITZER'S JUNIPER**—A low, broad, pyramidal-shaped evergreen with graceful and very beautiful lacy foliage of a healthy blue-green color. The branches grow horizontally from the stem, forming a flat spreading top. Height 6 to 8 feet, but can be kept smaller by annual pruning. The handsomest of the Chinese junipers and the most satisfactory in this climate. Originated near Berlin, Germany. Specimens, 1½ to 2 feet spread, \$5.00 each.

**SILVER CEDAR (Juniperus Virginiana Glauca)**—This beautiful silvery-blue cedar is of exquisite color and is a distinct addition to any planting. It never grows very large, not over 15 to 20 feet, and can be kept even smaller if desired. It is narrow, compact and symmetrical in shape and very desirable for foundation plantings, borders, groups or as individual specimens. In the fall months the berries begin to appear, some of them being clear sky-blue, others darker and silver colored. The berries are borne abundantly and make a great attraction for the song birds. Specimens, 1½ to 2 feet, \$4.50 each.



Norway Spruce

annual pruning. Specimens, 1½ to 2 feet, \$10.00 each.

### COLORADO GREEN SPRUCE —

When seeds of the Colorado Blue are planted in the nursery, 75 per cent of the trees are green and the balance various shades of blue. We select the blue specimens to offer as Colorado Blue and the balance are sold as Colorado Green Spruce. These green specimens make exceedingly attractive trees, having all the characteristics of the Colorado Blue except color. Specimens, 1½ to 2 feet, \$5.00 each.

**NORWAY SPRUCE**—The time-honored Christmas tree, universally used for this purpose. A tall, graceful, picturesque tree reaching a height of 60 feet at maturity. Pyramidal in shape with broad, drooping branches at the base. Foliage deep green with light brown cones 5 to 7 inches long in the fall. Stands pruning well and is universally used for hedges and screens 6 to 8 feet tall. Planted largely for protection as a windbreak around orchards, farm houses and other buildings, and often planted as line fences to separate fields. Fruit growers report that an orchard

protected by such a windbreak will yield double the crop of sound fruit of one left exposed to bleak and cutting winds of winter. As a windbreak, Norway Spruce are usually planted 10 feet apart.

### Spruce

**BLACK HILL SPRUCE**—A very symmetrical, compact, bushy tree. Very hardy. Foliage varies from green to bluish tint. Specimens, 1½ to 2 feet, \$3.00 each.

**COLORADO BLUE SPRUCE**—A magnificent tree with a silvery-blue sheen that makes it a striking object in any landscape. Its conspicuous blue color makes it a very desirable tree for group planting. Grows 20 to 30 feet at maturity, but can be kept at almost any height by

Prices:

	Each	10
1½ to 2 ft.....	\$1.25	\$10.00
2 to 3 ft.....	1.75	15.00
3 to 4 ft.....	2.50	20.00
4 to 5 ft.....	4.00	35.00

Green's Extra Large Fruit Trees for Quick Bearing, Page 27.

**GLOBE ARBORVITAE**

Make the Entrance to Your Home Cheery  
the Year Round

## GREEN'S EVERGREEN COLLECTION

### FOR DOORWAY PLANTING

6 Specimen Evergreens  
—All for \$16.20

2 Pyramidal Arborvitae, 1½ to 2 ft.  
2 Siberian Arborvitae, 1½ to 2 ft.  
2 Globe Arborvitae, 1 to 1½ ft.

**Bargain  
Collection Price \$16.20**

Cannot Be Sent by Parcel Post

# Ornamental Trees

## Increase the Value of Your Property



IMAGINE if you can what a bleak and barren place this country of ours would be without shade and ornamental trees. Have you ever noticed that the homes which look the most attractive to you invariably are those with a few well-placed ornamental trees around them? There is a growing appreciation for trees. More people are learning to know and love them every day. It is well recognized that shade trees around the farm and city home not only add to its beauty and comfort, but greatly increase the value of the property. Truly "It's not a home until it's planted." We do not advise planting big, overgrown ornamental trees. They do not transplant as successfully as the sizes offered herein.

**RATES**—Less than ten at each rates. Ten to fifty at ten rates. Fifty or more at hundred rates.

**AMERICAN ELM**—In our opinion the handsomest and most dignified of all the native trees. Probably more largely planted and better known than any other. A tall-growing stately tree reaching 60 feet, with a wide arching top and vaselike form. Extensively used for street planting, where its wide-sweeping branches form perfect Gothic arches over the streets. Prices: 6 to 8 feet, 95 cents each, 10 for \$8.50; 8 to 10 feet, \$1.40 each, 10 for \$12.50.

**AMERICAN LINDEN (Basswood)**—A tall-growing, stately tree, growing 60 to 80 feet tall, with large shining green leaves and light yellow fragrant flowers in July. A splendid tree for lawn or street planting. Valuable for its beautiful white wood. Prices: 6 to 8 feet, \$1.75 each; 8 to 10 feet, \$2.00 each.

**BECHTEL CRAB**—A handsome bush or little tree seldom over 20 feet in height. One of the finest for lawn decoration. Produces in profusion double, delicate pink flowers resembling at a distance dainty little roses. Blooms when young and is very fragrant. Prices: 2 to 3 feet, \$1.25 each; 3 to 4 feet, \$1.50 each.



Catalpa Bungei—Along Driveway



Lombardy Poplar

**CATALPA SPECIOSA**—One of the most showy flowering trees, noted for its fast and vigorous growth. Fine for lawn and street planting. Large heart-shaped leaves with clusters of white flowers tinged with violet and dotted with purple and yellow. Its long, narrow "beans" in autumn are unique. Used extensively for fence posts and railroad ties. Its wood though soft is very durable. Grows to a height of 60 feet. Very hardy. Prices: 4 to 5 feet, 50 cents each, 10 for \$4.50; 5 to 6 feet, 65 cents each, 10 for \$6.00; 6 to 8 feet, \$1.00 each, 10 for \$9.00.

**CATALPA BUNGEI**—A beautiful umbrella-shaped tree about 8 or 10 feet high with large heart-shaped leaves laid with shingle-like precision, forming an even, compact dome-shaped head. Hardy, unique and handsome. Very useful in formal plantings. Prices: 5 to 6 feet, \$2.50 each; 6 to 8 feet, \$3.50 each.

**CUT-LEAVED WEEPING WHITE BIRCH**—A tall, graceful, weeping tree, with silvery-white bark and delicately cut foliage. Excellent for lawn and cemetery planting. Reaches 60 feet at maturity. Price: 4 to 5 feet, \$2.75 each.

**RED FLOWERING DOGWOOD (Cornus Florida Rubra)**—Similar to White Flowering Dogwood except that flowers vary from pink to light red. Grows 10 to 20 feet high. Price: 2 to 3 feet, \$2.75 each.

**WHITE FLOWERING DOGWOOD (Cornus Florida)**—A slow-growing dwarf tree with abundant, large white flowers appearing very early in the spring before the grayish-green leaves, and followed by attractive red berries. Leaves turn to deep red in autumn. Price: 2 to 3 feet, \$1.25 each.

**ENGLISH OAK**—The Royal Oak of England. A spreading long-lived tree 60 feet or more at maturity, with dark green leaves smaller than those of our native species. Well adapted for lawn and public grounds. Price: 5 to 6 feet, \$2.00 each.

**RED OAK**—A massive tree with light grey bark and green, round-lobed foliage that turns a beautiful red in the autumn. Excellent for parks and large lawns. Grows 60 feet and upwards. Price: 4 to 5 feet, \$2.50 each.

*Ornamental Trees Cannot Be Sent by Parcel Post*



**JAPAN FLOWERING CHERRY**—A mass of rose-colored blossoms, clinging closely to the branches; gives the tree the appearance of being buried beneath a wealth of exquisite color and fragrance. Grows 20 feet and upwards. Price: 3 to 4 feet, \$3.00 each.

**MOUNTAIN ASH**—A handsome little lawn tree growing 20 to 30 feet high, with long, dark green foliage and clusters of bright red berries. Price: 4 to 5 feet, \$1.25 each.

**ORIENTAL PLANE**—A hardy, rapid-growing, shade tree that does well in smoky cities, near the seashore, or in unfavorable situations where other varieties would not flourish. Excellent for street planting. Beautiful, dense foliage. Grows 60 feet and upwards. Price: 6 to 8 feet, \$1.50 each.

**CAROLINA POPLAR**—A very rapid-growing tree, giving shade in a very short time. Very easy to transplant and does well on any kind of soil. Desirable for roadside planting, in parks, and along rivers and streams for the protection of the banks. Used extensively for screens to hide unattractive buildings. Attains a height of 60 feet at maturity. Bright heart-shaped, glossy green leaves, silvery white underneath. Prices: 6 to 8 feet, 50 cents each, 10 for \$4.50, 50 for \$20.00; 8 to 10 feet, 75 cents each, 10 for \$6.50, 50 for \$30.00; 10 to 12 feet, \$1.00 each, 10 for \$9.00, 50 for \$37.50.

**LOMBARDY POPLAR**—A tall, narrow, tapering tree, 60 feet high at maturity, a striking feature in any landscape. Fine for planting in groups, along driveways, or to make boundary lines. Sometimes used for tall screen hedges. Prices: 5 to 6 feet, 50 cents each, 10 for \$4.50; 6 to 8 feet, 75 cents each, 10 for \$6.50; 8 to 10 feet, \$1.00 each, 10 for \$9.00.

**PURPLE-LEAVED PLUM (Prunus Pissardi)**—A handsome, showy little tree 20 feet in height with striking pinkish-purple leaves in the spring that deepen in color as the season advances. Small, white, single flowers. Very striking and ornamental for lawn planting. Prices: 3 to 4 feet, \$1.00 each; 4 to 5 feet, \$1.25 each.

**BABYLON WEeping WILLOW**—Our well-known weeping willow. A large graceful tree, especially effective when planted near water. Grows 30 to 60 feet high. Price: 5 to 6 feet, \$1.25 each.

**GOLDEN WILLOW**—A very showy, yellow-barked tree reaching a height of 60 feet at maturity. A handsome tree at all seasons, but particularly conspicuous in winter and early spring before the leaves appear. Prices: 6 to 8 feet, 75 cents each, 10 for \$7.00.

**GOLDEN WILLOW (Bush form)**— 4 to 5 feet, 50 cents each, 10 for \$4.50.

**ASH-LEAVED MAPLE**—A very hardy, fast-growing tree about 60 feet high, planted extensively in the West for timber and windbreaks because it endures both drought and cold unusually well. Easily distinguished by its greenish-yellow bark. Bright green leaves which turn to yellow in autumn. Prices: 5 to 6 feet, 75 cents each; 6 to 8 feet, \$1.00 each; 8 to 10 feet, \$1.25 each.

**NORWAY MAPLE (Hard Maple)**—Without a doubt one of the most desirable shade trees for street and lawn planting. Of fairly rapid growth, reaching a height of 60 feet at maturity. Sturdy, compact and vigorous, forming a rounded head of stout branches and broad, deep green leaves. Prices: 6 to 8 feet, \$2.50 each; 8 to 10 feet, \$3.00 each.

**SILVER MAPLE (Soft Maple)**—The fastest growing of the maples, very valuable where immediate shade is required. Grows to a height of 60 feet, forming a large, spreading head, with bright green leaves, silvery white on the under side. Does equally well in well-drained or low, swampy locations. Prices: 6 to 8 feet, \$1.25 each; 8 to 10 feet, \$1.50 each.

**SUGAR MAPLE (Rock Maple)**—One of the most useful of all our maples, excellent for street and lawn planting and used extensively in the production of maple sugar. A tree of magnificent proportions, often 80 feet in height, straight, spreading and symmetrical in shape. Long-lived. It roots deeply, allowing the grass to grow close about its trunk. Dark green leaves turning to scarlet and gold in autumn. Prices: 6 to 8 feet, each \$2.25; 8 to 10 feet, each \$3.00.

**DOUBLE WHITE THORN (Hawthorne)**—The famous May Thorn of England. Low, dense little tree about 20 feet in height. A mass of clustered, double, rose-shaped white flowers in May, followed by a display of showy, scarlet fruits which remain a long time. Makes a pleasing flowering hedge. Price: 3 to 4 feet, \$2.00 each.

**PAUL'S SCARLET THORN (Hawthorne)**—Similar to White Flowering Thorn except that the flowers are a deep crimson scarlet. Grows 10 to 12 feet high. Price: 3 to 4 feet, \$2.00 each.

**RUSSIAN MULBERRY**—A very hardy, low-growing tree 20 to 30 feet high with beautifully cut foliage and an abundance of fruit which attracts the birds. Not one of the edible varieties. Prices: 4 to 5 feet, 50 cents each, 10 for \$4.50; 5 to 6 feet, 75 cents each, 10 for \$6.00.

**WHITE HORSE CHESTNUT**—A large tree of regular outline, 60 to 80 feet tall, completely covered in May with great upright spikes of white flowers. Satisfactory either as a street or lawn tree, particularly desirable where dense shade is required. Prices. 3 to 4 feet, \$1.00 each; 4 to 5 feet, \$1.25 each.

## LIST OF TREES FOR ALL PURPOSES

### TREES FOR QUICK GROWTH

Catalpa  
Carolina Poplar  
Lombardy Poplar  
Willows  
Ash-Leaved Maple  
Silver Maple

### FOR STREET OR AVENUE

PLANTING  
American Elm  
American Linden  
Oriental Plane  
All Maples

### TREES THAT FLOWER

Bechtel Crab  
Catalpa  
Flowering Dogwood  
Japanese Flowering Quince  
Double White Thorn  
Paul's Scarlet Thorn  
White Horse Chestnut

### WEeping TREES

Cut-Leaved Birch  
Babylon Weeping Willow

### TREES FOR MOIST PLACES

Birch  
Willow  
Poplar  
Oaks  
Linden  
Elm

### TREES FOR THE LAWN

Catalpa Bungei  
Flowering Trees  
Purple-Leaved Plum  
Mountain Ash  
Oaks, Elms and Maples

*You Get Fifty Cents More Value for Every Dollar Spent with Green's*



## Ornamental Shrubs

Give a Finishing Touch to Your Home

**N**O OTHER class of ornamentals plays such an important part in the decorative scheme for the home grounds. Without shrubs the foundation planting would lose all its bloom and fragrance. In our descriptions we endeavor to give the height of each variety at maturity and the time of blooming in this latitude. From these descriptions you will know that the dwarf-growing varieties should be planted in front of those of taller habits and can plan a continuous succession of bloom from early spring until winter.

**ALTHEA (Rose of Sharon)**—This beautiful shrub is of unusual value due to its habit of blooming late in the season after other shrubs are through flowering. Blooms in August and September and continues in flower until cut off by the frost. Very hardy, erect, compact, reaching 8 to 10 feet at maturity. Bell-shaped flowers of striking colors. Used extensively as a flowering hedge. We can furnish double-flowering varieties in the following colors: White, red, purple, rose with darker center, white with dark center. In single-flowering sorts we can supply white and rose. Order by color and state whether single or double sorts are wanted. **Prices of strong bushes, 2 to 3 feet, 50 cents each.**



Althea (Rose of Sharon)

By parcel post, 1½ to 2 feet high, 45 cents each, postpaid.

**BUTTERFLY BUSH**—Bushes grow from 3 to 4 feet tall and are crowned with long racemes of lilac-colored flowers in July. Its honeyed fragrance attracts the butterflies, and as many as fifty have been counted on one bush at one time. **Prices of strong bushes, 2 to 3 feet, 50 cents each.**

By parcel post, 1½ to 2 feet high, 45 cents each, postpaid.

**DEUTZIA CANDIDISSIMA** — A strong-growing shrub 6 to 8 feet high, with bell-shaped, pure white, double flowers in June. The flowers are borne in erect panicles 2 to 4 inches long and are so perfect in shape they are frequently used as cut flowers. **Prices of strong bushes, 2 to 3 feet, 50 cents each.**

By parcel post, 1½ to 2 feet high, 45 cents each, postpaid.

**DEUTZIA CRENATA (Flore Pleno)**

—This variety has very full, bell-shaped, double flowers, white tinged with rose. They are produced in great profusion in racemes 4 to 5 inches long. Blooms in June. Grows 6 to 8 feet tall. **Prices of strong bushes, 2 to 3 feet, 50 cents each.**

By parcel post, 1½ to 2 feet high, 45 cents each, postpaid.

*Our Shrubs Will Bloom the First Season After Planting*

## Ornamental Shrubs

Continued

**CALIFORNIA PRIVET** — (See page 40).

**DEUTZIA GRACILIS** (Dwarf Deutzia) — A low, dense-growing shrub bearing a profusion of single, white flowers in May. Excellent for shrub borders in front of taller kinds. Grows 3 to 4 feet high. Price: 12 to 15 inches, 50 cents each.

By parcel post, 12 to 15 inches high, 55 cents each, postpaid.

**DEUTZIA PRIDE OF ROCHESTER** — An early and large-flowering variety that blooms in May. Flowers white and bell-shaped. Grows 6 to 8 feet tall. Prices of strong bushes, 2 to 3 feet, 50 cents each.

By parcel post, 1½ to 2 feet high, 45 cents each, postpaid.

**DWARF BARBERRY**—(See page 40).

**GOLDEN BELL** (Forsythia Viridissima)—A harbinger of spring. One of the earliest flowering shrubs, blooming with the crocuses. Its striking yellow flowers, appearing as they do before the leaves, brighten up the garden at a time when other flowers are scarce. Grows 5 to 7 feet high. Not entirely hardy, and it is best to give it some slight protection in winter in northern latitudes. Prices of strong bushes, 2 to 3 feet, 50 cents each; 18 to 24 inches, 40 cents each.

By parcel post, 18 to 24 inches high, 45 cents each, postpaid.

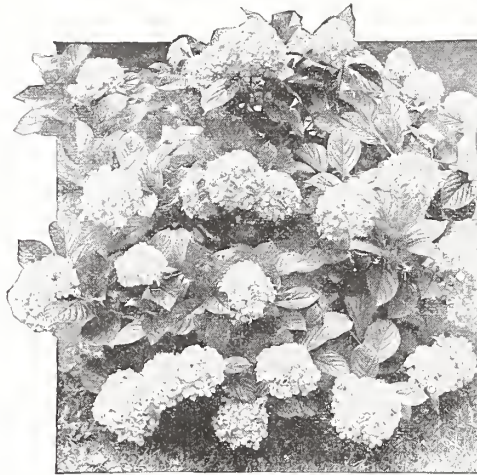
**GOLDEN ELDER**—Planted among shrubs of green foliage, this golden-leaved Elder forms a pleasing contrast, adding tone and character to the planting. The flowers are white, in flat-topped cymes, in early summer. Grows naturally 6 to 8 feet high, but should be pruned back severely each spring to secure denser and brighter foliage. Prices of strong bushes, 2 to 3 feet, 50 cents each.

By parcel post, 1½ to 2 feet high, 45 cents each, postpaid.

**HYDRANGEA ARBORESCENS**—One of the finest of the Hydrangeas, growing 6 feet high, and bearing in July, August and September, a profusion of large clusters of snow-white flowers resembling the familiar Snowball in appearance. The blossoms are smaller and more refined than those of the *Paniculata Grandiflora*. Very desirable for a flowering hedge. Prices of strong bushes, 2 to 3 feet, 75 cents each.

By parcel post, 1½ to 2 feet high, 70 cents each, postpaid.

**HYDRANGEA PANICULATA GRANDIFLORA** (Bush Form)—In our opinion, no other shrub gives quite the "value received" of this hardy hydrangea. It is easy to grow, never fails to bloom the first season planted, and produces in abundance immense clusters of greenish white flowers which gradually change to white and later to delicate pink. Normally grows 7 feet high, but severe pruning each spring greatly increases the size of the flower



The Beautiful Hydrangea

heads. Blooms in August and September, and if the flowers, which keep for an extremely long time, are allowed to dry on the bush, they turn to a bronzy green and are valuable for winter decoration in the home. Makes a beautiful flowering hedge. Prices of strong bushes, 18 to 24 inches, 40 cents each; 2 to 3 feet, 50 cents each; 3 to 4 feet, 75 cents each.

By parcel post, 18 to 24 inches high, 45 cents each, postpaid.

**HYDRANGEA PANICULATA GRANDIFLORA** (Tree Form)—We train the bush hydrangea to single stems, which form small, compact, miniature trees very much like the tree rose in appearance. Same characteristics as the bush form except shape.

Prices of Tree Form Hydrangeas: 2 to 3 feet, \$1.00 each; 3 to 4 feet, \$1.25 each.

By parcel post, 1½ to 2 feet, 80 cents each, postpaid.

**PINK BUSH HONEYSUCKLE**—A handsome shrub growing 6 to 8 feet high, bearing in abundance pretty pink flowers in late spring. Literally covered in summer and autumn with a mass of showy orange and scarlet berries. Makes a very pretty flowering hedge. Prices of strong bushes, 2 to 3 feet, 50 cents each.

By parcel post, 1½ to 2 feet, 45 cents each, postpaid.

**WHITE BUSH HONEYSUCKLE**—Identical to the pink variety except that the flowers are a creamy white. Prices of strong bushes, 2 to 3 feet, 50 cents each.

By parcel post, 1½ to 2 feet, 45 cents each, postpaid.



Lilac Blossoms

*Shrubs Increase Value As Well As Beautify Your Home*





Mock Orange (Syringa)

### Ornamental Shrubs—Continued

**INDIAN CURRANT (Coral Berry)**—A desirable shrub for shady places. Grows 3 to 5 feet tall, producing inconspicuous rose-colored flowers in June and July. Its dull red, coral-like berries cling in great profusion along the under side of the branches. One of the showiest of the berried shrubs. Fine as a hedge. Prices of strong bushes, 2 to 3 feet, 50 cents each.

By parcel post, 1½ to 2 feet high, 45 cents each, postpaid.

**JAPAN QUINCE**—Completely covered with dazzling scarlet flowers in May, this grand old shrub is a striking object to behold. The fruits which follow later on are quince-shaped and quite fragrant. With stout branches armed with fine thorns, it makes not only a desirable flowering hedge, but a defensive one as well. Grows naturally 6 to 8 feet high, but bears any amount of shearing. Prices of strong bushes, 1½ to 2 feet, 50 cents each.

By parcel post, 1½ to 2 feet high, 60 cents each, postpaid.

### Lilacs

**LILAC—ALBA**—Common White Lilac. Heart-shaped foliage and splendid panicles of pure white, single flowers in May. Prices of strong bushes, 2 to 3 feet, 50 cents each.

By parcel post, 1½ to 2 feet high, 45 cents each, postpaid.

**LILAC—CHARLES X**—Loose trusses of single flowers of a reddish purple. Grows 6 to 8 feet high. Prices of strong bushes, 2 to 3 feet, \$1.10 each.

By parcel post, 1½ to 2 feet high, \$1.00 each, postpaid.

**LILAC—LUDWIG SPAETH**—Large trusses of dark purplish blue, single flowers. Grows 6 to 8 feet high.

Prices of strong bushes, 2 to 3 feet, \$1.10 each. By parcel post, 1½ to 2 feet high, \$1.00 each, postpaid.

**LILAC—MADAM CASIMIR PERIER**—Medium-sized, clusters of double white flowers. Dwarf grower. Prices of strong bushes, 2 to 3 feet, \$1.10 each.

By parcel post, 1½ to 2 feet high, \$1.00 each, postpaid.

**LILAC—MARIE LEGRAYE**—Large clusters of single white flowers. Grows 6 to 8 feet high. Prices of strong bushes, 2 to 3 feet, \$1.10 each.

By parcel post, 1½ to 2 feet high, \$1.00 each, postpaid.

**LILAC—PRESIDENT GREVY**—Large, full clusters of double, pale wistaria violet flowers. Grows 6 to 8 feet high. Prices of strong bushes, 2 to 3 feet, \$1.10 each.

By parcel post, 1½ to 2 feet high, \$1.00 each, postpaid.

**LILAC—VILLOSA**—A bushy lilac rarely over 6 feet high, with rosy pink flowers late in the spring. Prices of strong bushes, 2 to 3 feet, 75 cents each.

By parcel post, 1½ to 2 feet high, 70 cents each, postpaid.

**LILAC—VULGARIS**—Common Purple Lilac. Probably the best known of any of the lilacs. Heart-shaped foliage and splendid typical lilac flowers in May, which are delightfully fragrant. Grows 8 to 12 feet high. Prices of strong bushes, 2 to 3 feet, 50 cents each.

By parcel post, 1½ to 2 feet high, 45 cents each, postpaid.

**SNOWBALL (Guelder Rose)**—A well-known favorite shrub with globular clusters of white flowers the latter part of May. Grows 8 to 10 feet high. Prices of strong bushes, 2 to 3 feet, 75 cents each.

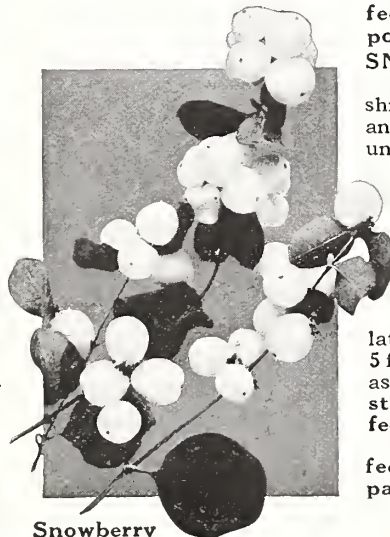
By parcel post, 1½ to 2 feet high, 70 cents each, postpaid.

**JAPANESE SNOWBALL**—An erect, compact shrub, 6 to 8 feet tall, with purple-tinted foliage. Ball-shaped clusters of white flowers in June. Prices of strong bushes, 2 to 3 feet, \$1.00 each.

By parcel post, 1½ to 2 feet high, 90 cents each, postpaid.

**SNOWBERRY**—A slender, medium-growing shrub, which does well in any soil and will flourish under trees and in densely shaded places where little else will grow. Leaves are dark green and slender, small rose-colored flowers in June and July. Clusters of attractive milk-white berries which last until late in winter. Grows 3 to 5 feet high. Very attractive as a hedge. Prices of strong bushes, 2 to 3 feet, 50 cents each.

By parcel post, 1½ to 2 feet, 45 cents each, postpaid.



Snowberry

*Note That We Offer a Special Grade of Shrubs by Parcel Post, Postpaid*



Weigela. See page 37

Blossom of Butterfly Bush. See page 33 Golden-Leaved Elder, page 34

### Ornamental Shrubs—Continued

**SPIRAEA ANTHONY WATERER**—A dwarf variety growing 2 to 3 feet high and covered with large heads of crimson flowers. Very desirable for planting in front of taller-growing shrubs. If the flowers are removed as they fade, it will cause the plant to keep up a continuous bloom until late in the fall. Price of strong bushes, 1½ to 2 feet, 75 cents each.

By parcel post, 1½ to 2 feet high, 80 cents each, postpaid.



Spiraea Van Houttei

**SPIRAEA BILLARDI**—An erect-growing shrub with dense spikes of rose-pink flowers in July and August, and again in the fall. Grows 4 to 6 feet high. Does well in moist places. Prices of strong bushes, 2 to 3 feet, 50 cents each.

By parcel post, 1½ to 2 feet high, 45 cents each, postpaid.

**SPIRAEA CALLOSA ROSEA**—A free-blooming variety, producing large panicles of deep, rosy blossoms nearly all summer. Grows 4 to 6 feet high. Prices of strong bushes, 2 to 3 feet, 50 cents each.

By parcel post, 1½ to 2 feet high, 45 cents each, postpaid.

**SPIRAEA FROEBELI**—This is another beautiful red variety. Just a trifle taller than Anthony Waterer. It is a strong, healthy grower, dwarf in nature and can be used along edgings or foundation planting. Everyone should have a few of these and the Anthony Waterer mixed in with their other plants, or just in front of the graceful Van Houttei or other tall-growing Spiraeas. Prices of strong bushes, 2 to 3 feet, 50 cents each.

By parcel post, 1½ to 2 feet high, 45 cents each, postpaid.

**GOLDEN SPIRAEA**—A rapid-growing variety with masses of snowy white flowers in June. Young foliage bright yellow, changing to golden browns in autumn. Very desirable for group planting. Grows 8 to 10 feet high. Prices of strong bushes, 2 to 3 feet, 50 cents each.

By parcel post, 1½ to 2 feet high, 45 cents each, postpaid.

**SPIRAEA OPULIFOLIA (Ninebark)**—Grows upright, attaining 8 to 10 feet. Bears white flowers in June. Old flower heads turn to a dark red and make a striking variety of colors at different stages of maturity. Prices of strong bushes, 4 to 5 feet, 75 cents each.

See Planting Suggestions on Pages 38 and 39



**Ornamental Shrubs—Continued**

**SPIRAEA VAN HOUTTEI**

—Better known and more largely planted than any other shrub. An extremely graceful shrub with long, drooping branches completely covered with flat clusters of white flowers in May and June. When in blossom, a hedge of Spiraea Van Houttei is a sight long to be remembered. Cannot be too highly recommended. We consider it the best general-purpose shrub. Grows 6 to 8 feet high.

Prices of strong bushes, 2 to 3 feet, 50 cents each; \$4.50 per 10; \$20.00 per 50. By parcel post, 1½ to 2 feet high, 45 cents each, postpaid.



**Philadelphus Virginallis**

**MOCK ORANGE (Syringa)**—One of the best-known shrubs with a wealth of white blossoms in May and June. Derives its name from its blossoms which resemble orange blossoms. Grows 8 to 10 feet high. Prices of strong bushes, 2 to 3 feet, 50 cents each.

By parcel post, 1½ to 2 feet high, 45 cents each, postpaid.

**PHILADELPHUS VIRGINALLIS** (Sometimes Called Mock Orange)—A new, choice, fragrant variety, with large, creamy white flowers in May and early June, and intermittently until fall. Grows 6 to 8 feet high. Prices of strong bushes, 2 to 3 feet, \$1.00 each.

By parcel post, 2 to 3 feet high, \$1.10 each, postpaid.

**GOLDEN SYRINGA**—A compact, dwarf-growing shrub with very brilliant yellow foliage and white flowers in May and June. Retains its color all season and is very valuable for creating pleasing and striking contrasts with green-leaved shrubs. Grows 2 to 3 feet high. Prices of strong bushes, 1½ to 2 feet, 75 cents each.

By parcel post, 1½ to 2 feet high, 80 cents each, postpaid.

**HIGH BUSH CRANBERRY**

—Sometimes called Tree Cranberry. An upright and spreading shrub with smooth, light grey branches and broad, rough leaves. Produces flat heads of white flowers 3 to 4 inches across in May and June, followed by scarlet fruits which remain on the branches and keep their bright scarlet color until the following spring. Grows 8 to 10 feet high. Prices of strong bushes, 2 to 3 feet, 75 cents each. By parcel post, 1½ to 2 feet high, 70 cents each, postpaid.

**JAPANESE TREE LILAC**

—Beautiful for lawn specimens. Grows 20 to 30 feet high. Large, creamy white flowers in great profusion in June and July. Prices of strong bushes, 3 to 4 feet, \$1.50 each. By parcel post, 3 to 4 feet high, \$1.60 each, postpaid.

**KERRIA JAPONICA**—A medium dwarf shrub with beautiful globe-shaped flowers of bright orange. Not hardy in extreme northern latitudes. Grows 6 to 8 feet high. Prices of strong bushes, 1½ to 2 feet, 75 cents each.

By parcel post, 1½ to 2 feet high, 80 cents each, postpaid.

**PEARL BUSH**—Buds like pearls strung on slender threads and open up to fragrant clusters of pure white, starry flowers. Grows 6 to 10 feet high. Prices of strong bushes, 2 to 3 feet, 75 cents each.

By parcel post, 2 to 3 feet high, 80 cents each, postpaid.

**PINK FLOWERING ALMOND**—Similar to White Flowering Almond except blossoms are pink or rose-colored. Grows 6 to 8 feet high. Prices of strong bushes, 2 to 3 feet, 75 cents each.

By parcel post, 2 to 3 feet high, 80 cents each, postpaid.

**PRUNUS TRILOBA**—A handsome, small lawn tree with a mass of very double, pink blossoms early in the spring before the leaves appear. Grows 10 to 12 feet high. Prices of strong bushes, 2 to 3 feet, \$1.00 each.

By parcel post, 2 to 3 feet high, \$1.10 each, postpaid.

**REGEL'S PRIVET**—A low, dense shrub with graceful drooping branches. Desirable for planting in front of tall-growing shrubs. Grows 6 to 8 feet high. Prices of strong bushes, 2 to 3 feet, 50 cents each.

By parcel post, 1½ to 2 feet high, 45 cents each, postpaid.

**WEIGELA**—One of the most charming of all the shrubs, growing 6 to 8 feet high, with a profusion of trumpet-shaped flowers in May and June. We offer them in three colors—red, pink and white. Order by color.

Prices of Red Weigelas—Strong bushes, 2 to 3 feet, \$1.00 each. By parcel post, 1½ to 2 feet high, 90 cents each, postpaid.

Prices of Pink Weigelas—Strong bushes, 2 to 3 feet, 50 cents each. By parcel post, 1½ to 2 feet high, 45 cents each, postpaid.

Prices of White Weigelas—Strong bushes, 2 to 3 feet, 75 cents each. By parcel post, 1½ to 2 feet high, 70 cents each, postpaid.

**WHITE FLOWERING ALMOND**—Beautiful, double, white flowers, snuggling tightly to twigs, early in spring before the leaves appear. Grows 6 to 8 feet high.

Prices of strong bushes, 2 to 3 feet, 75 cents each. By parcel post, 2 to 3 feet high, 80 cents each, postpaid.

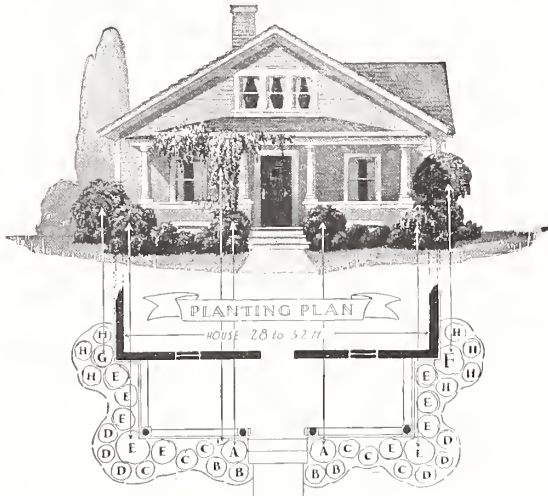
**GREEN'S FLOWERING SHRUB COLLECTION**

8 Blooming Size Shrubs, 2 to 3 ft. High, All for \$3.15

- 1 Spiraea Van Houttei
- 1 Hydrangea P. G.
- 1 Golden Bell
- 1 Deutzia Pride of Rochester
- 1 Indian Currant
- 1 Pink Bush Honeysuckle
- 1 Snowberry
- 1 Dwarf Barberrry, 1½ to 2 feet.

Special Price . . . . . **\$3.15**

By Parcel Post, \$3.60, Postpaid



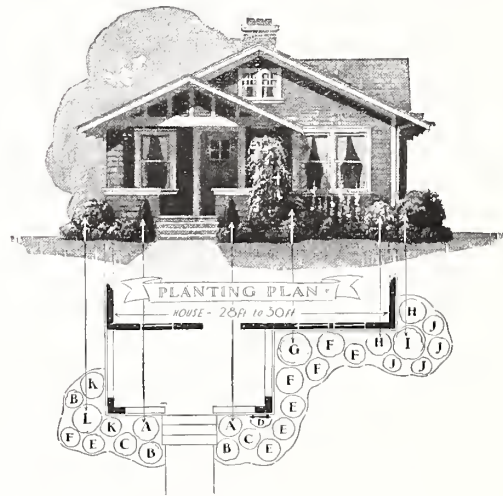
LANDSCAPE PLAN NO. 1 (Above)

Key	No.	NAME	Size	Catalog Price
A	2	Althea	2-3 ft.	\$ 1.00
B	4	Spiraea Anthony Waterer	1½-2 ft.	3.00
C	6	Snowberry	2-3 ft.	3.00
D	6	Hydrangea Arborescens	2-3 ft.	4.50
E	10	Spiraea Van Houttei	2-3 ft.	4.50
F	1	Mock Orange	2-3 ft.	.50
G	1	Named Lilac	2-3 ft.	1.10
H	7	Indian Currant	2-3 ft.	3.50
I	1	Clematis Paniculata (Vine)		.50

Regular Catalog Price, \$21.60  
 OUR SPECIAL PRICE, \$19.50

# An EASY WAY to LANDSCAPE YOUR HOME

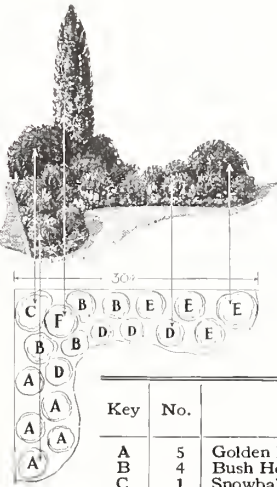
We have selected three typical houses and made a planting plan for each one. Probably your own home is so near like one of these, you can easily have an attractive and harmonious planting by following the suggested arrangement. All these plants are thrifty, bushy plants which will give you quick results and beautiful flowers at money-saving prices.



LANDSCAPE PLAN NO. 3 (Above)

Key	No.	NAME	Size	Catalog Price
A	2	Pyramidal Arborvitae (Evergreen)	1½-2 ft.	\$ 6.00
B	3	Dwarf Barberry	1½-2 ft.	.75
C	2	Spiraea Callosa Rosea	2-3 ft.	1.00
D	1	Clematis Paniculata (Vine)		.50
E	4	Hydrangea Arborescens	2-3 ft.	3.00
F	5	Deutzia Crenata	2-3 ft.	2.50
G	1	Named Lilac	2-3 ft.	1.10
H	2	Spiraea Van Houttei	2-3 ft.	1.00
I	1	Bush Honeysuckle	2-3 ft.	.50
J	4	Indian Currant	2-3 ft.	2.00
K	2	Pink Weigela	2-3 ft.	1.00
L	1	Golden Bell	2-3 ft.	.50

Regular Catalog Price, \$19.85  
 OUR SPECIAL PRICE, \$17.75



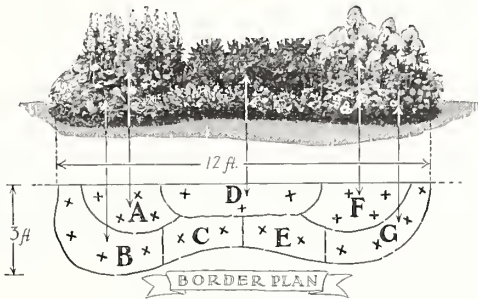
LANDSCAPE PLAN NO. 2 (Left)

Border Planting of Flowering Shrubs

This harmonious planting of flowering shrubs will make a pleasing corner planting on any grounds. These shrubs also make this a good planting for screening out some unsightly view.

Key	No.	NAME	Size	Catalog Price
A	5	Golden Bell	2-3 ft.	\$ 2.50
B	4	Bush Honeysuckle	2-3 ft.	2.00
C	1	Snowball	2-3 ft.	.75
D	4	Hydrangea Paniculata Grandiflora	2-3 ft.	2.00
E	4	Pink Weigela	2-3 ft.	2.00
F	1	Lombardy Poplar (Tree)	5-6 ft.	.50

Regular Catalog Price, \$ 9.75  
 OUR SPECIAL PRICE, \$8.80



LANDSCAPE PLAN NO. 4

12-Foot Border of Beautiful Hardy Flowers

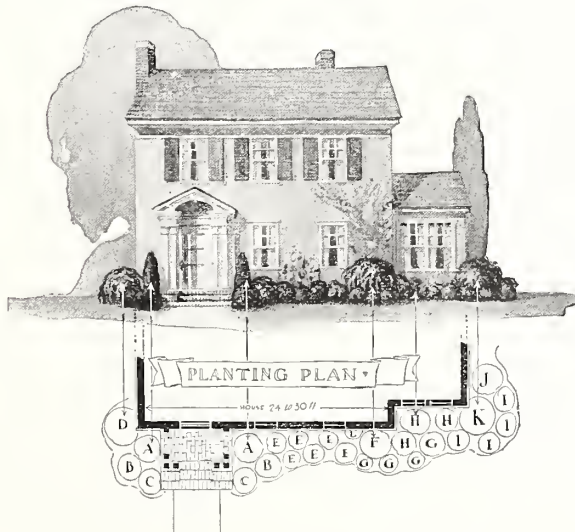
Enough to plant a border 3 feet wide, and 12 feet long. Plant at edge of lawn or in front of shrubbery.

Key	No.	NAME	Catalog Price
A	4	Hollyhocks	\$ 1.00
B	4	Coreopsis	1.00
C	2	Oxshp.	.50
D	3	Paeonies (in variety)	1.50
E	2	Columbine	.50
F	4	Hardy Phlox	1.00
G	4	Shasta Daisy	1.00

Regular Catalog Price, \$6.50  
 COMPLETE BORDER, SPECIAL AT \$5.85

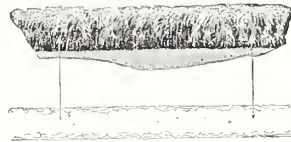
HAVE COLOR IN YOUR BORDERS!

Green's perennials live from year to year. Plant these colorful varieties in your borders and enjoy them continually. See perennials in color on inside front cover page and Phlox Collection, Page 44.



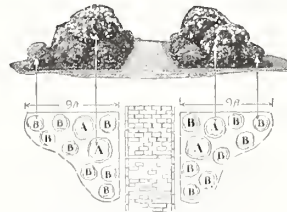
HEDGES FOR BOUNDARY

Key	No.	NAME	Size	Catalog Price
A	2	Pyramidal Arborvitae	1 1/2-2 ft.	\$ 6.00
B		California Privet		
		10 inches apart in single row—		\$ 1.00
		12 plants for each 10 feet—		per 10
		1 1/2-2 ft. high		
		6 inches apart in double row—		\$ 1.00
		20 plants for each 10 feet—		per 10
		1 1/2-2ft. high		



SPIRAEA VAN HOUTTEI  
 Flowering Hedge

Spiraea Van Houttei planted 2 feet apart makes a beautiful flowering hedge, 5 plants for each 10 feet. \$4.50 per 10, \$20.00 per 50.



LANDSCAPE PLAN NO. 5  
 Entrance Walk Planting

Key	No.	NAME	Size	Catalog Price
A	4	Indian Currant	2-3 ft.	\$ 2.00
B	16	Dwarf Barberry	1 1/2-2 ft.	4.00

Regular Catalog Price, \$ 6.00  
 OUR SPECIAL PRICE, \$ 5.50

LANDSCAPE PLAN NO. 6 (Left)

Key	No.	NAME	Size	Catalog Price
A	2	Silver Cedar	1 1/2-2 ft.	\$ 9.00
B	2	Globe Arborvitae	1-1 1/2 ft.	6.00
C	2	Siberian Arborvitae	1 1/2-2 ft.	6.00
D	1	Spiraea Van Houttei	2-3 ft.	.50
E	6	Spiraea Anthony Waterer	1 1/2-2 ft.	4.50
F	1	Bush Honeysuckle	2-3 ft.	.50
G	4	Hydrangea Arborescens	2-3 ft.	3.00
H	3	Pink Weigela	2-3 ft.	1.50
I	4	Snowberry	2-3 ft.	2.00
J	1	Flowering Almond	2-3 ft.	.75
K	1	Golden Bell	2-3 ft.	.50
L	1	Boston Ivy (Vine)		.85

Regular Catalog Price, \$35.10  
 OUR SPECIAL PRICE, \$31.50

# Hedges, Screens and Windbreaks

**BEAUTIFY as They SERVE**

**H**EDGES—Leaving the question of beauty aside, hedges are far superior to fences because they get better each year, while fences need painting and repairing every few years and ultimately must be replaced. What to use for a hedge depends entirely upon your taste. For formal treatment, demanding a regular outline, we recommend California Privet and Dwarf Barberry; for decorative effect one of the flowering kinds like Althea, Spiraea Van Houttei, Deutzia Crenata, Japan Quince, Bush Honeysuckle, Mock Orange, Snowberry, Indian Currant, Hydrangea and Ostrich Plume. For a hedge 2 to 3 feet high, we suggest Dwarf Barberry; from 3 to 4 feet high, California Privet; from 4 to 6 feet, the above named flowering shrubs; from 6 to 8 feet, American Arborvitae and Norway Spruce.

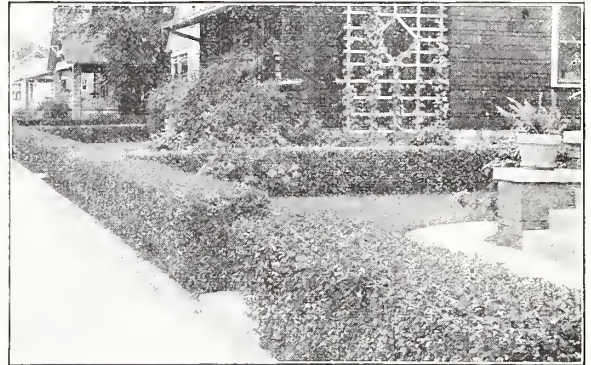
As California Privet and Dwarf Barberry are the most popular and extensively used hedge plants, we describe them under this heading.

**RATES**—Less than ten at each rate. Ten to fifty at ten rates. Fifty or more at hundred rates.

**CALIFORNIA PRIVET**—An almost evergreen shrub of dense, shapely habit with shining dark green foliage and a few minute flowers in June. Universally popular as a hedge plant because it stands trimming well and can be kept at any height or in any shape desired. The most desirable shrub for a hedge 4 to 5 feet high. Usually planted in single rows 10 inches apart, but where a broad hedge is desired, can be set in double rows—the rows 1 foot apart with the bushes 1 foot apart in each row, but alternated or staggered so as to come 6 inches apart in the hedge. Untrimmed, California Privet grows upright to 8 to 12 feet



**Spiraea Van Houttei Makes a Decorative Hedge**



**Privet Makes a Fine Clipped Hedge**

and makes a very desirable bush for planting alone or in groups.

**PRICES:**

	Each	10	50
1 1/2 to 2 feet	\$0.15	\$1.00	\$2.50
2 to 3 feet	.20	1.60	3.00
3 to 4 feet	.25	2.00	5.00

Parcel Post Size: 1 to 1-1/2 ft., 20 cents each; \$1.20 per 10, post-paid.

**DWARF BARBERRY (Barberry Thunbergii)**—A very attractive dwarf shrub, barely 3 feet high under the best conditions. Dense in growth, yet graceful on account of its drooping branches. Its yellow flowers are borne on long stems followed by scarlet berries in great profusion, clinging through most of the winter. The leaves color to scarlet and gold in the autumn. Very desirable for planting as single specimens and used extensively in foundation plantings or in borders planted in front of taller-growing shrubs. Very desirable for planting in corners where side-walks meet. For a hedge not over 2 or 3 feet high, this makes a very desirable shrub. Very hardy. As a hedge, set bushes 2 feet apart.

**PRICES:**

	Each	10	50
1 to 1 1/2 feet	\$0.25	\$2.00	\$9.00
1 1/2 to 2 feet	.30	2.50	11.00

Parcel Post Size: 10 to 12 in., 25 cents each; \$2.00 per 10, postpaid.

**SCREENS**—For this purpose almost any of the Ornamental Trees and Evergreens are desirable, but those most universally used are the American Arborvitae, Norway Spruce, Lombardy Poplar and Carolina Poplar.

**WINDBREAKS**—To be effective both summer and winter, windbreaks demand the use of evergreens. American Arborvitae and Norway Spruce will be found the most desirable for this purpose.

*See Suggestions for Hedges on Page 39*

# Roses—The Favorite of Every Garden

(SEE ILLUSTRATIONS IN COLOR ON BACK COVER)



**P**ROBABLY no other class of ornamentals give quite as much "value received" as roses. Very often the blooms of the first season repay the planter many times over for the time and money expended. The following list includes the best varieties selected by vote of the rose growers in the United States as the most satisfactory for the garden. Our roses are all two years old, field grown, budded stock, that will bloom this season.

**RATES**—Less than ten at each rate. Ten or more at ten rates.

## Hybrid Tea Roses

The Everblooming or Hybrid Tea Roses, commonly called Monthly Roses, are the most popular for the garden because of their long blooming season, beginning in June and continuing until frost. Hardy in the United States with winter protection, which is simply earth hilled 8 to 12 inches high around the bushes.

**Prices of Hybrid Tea Roses:** Strong two-year-old bushes, 90 cents each, 5 for \$4.00, 10 for \$7.50.

By parcel post, postpaid, for 5 cents per bush extra.

**COLUMBIA**—One of Ophelia's daughters or sports, full petaled, rose pink buds, deepening as the blossom opens, held erect on long, sturdy stems. Very vigorous, intensely fragrant and an excellent keeper, lasting 3 or 4 days as a cut flower.

**DUCHESS OF WELLINGTON**—Large, well-formed, semi-double, saffron-yellow buds, opening well. The most dependable yellow rose, fragrant, absolutely to be depended upon to produce flowers all during the season.

**GRUSS AN TEPLITZ**—Dark, rich crimson, the freest of bloomers and one of the favorites among the reds. Strong, tall canes with a continuous succession of bloom, a heavy grower that does well in the herbaceous border.

**EDWARD MAWLEY**—A perfectly formed rose of deep, blackish-crimson. Strong grower, fragrant and free of bloom.

**LOS ANGELES**—A luminous flame-pink overlaid with translucent golden yellow deep at the base. A long, pointed bud opening to a most perfect flower of indescribable beauty with full reflexed petals.

**LUXEMBURG**—Long, pointed buds on stiff stems, opening up to large, deep yellow, fragrant blooms. Very attractive. Excellent for cutting.

**MADAME BUTTERFLY**—A strong grower, producing a profusion of large flowers. Color a blending of bright pink, apricot and gold.

**MRS. AARON WARD**—Very double, pointed buds of deep Indian yellow, vigorous and compact in growth, floriferous with a rich, bronzy green foliage.

**OPHELIA**—Delicate salmon flesh-shaded with rose. A variety that has made such an enviable record that it heads the list of garden roses. Long, pointed buds on stiff stems. Free blooming with beautiful foliage.

**RADIANCE**—This rose stands high among amateur growers because of its vigorous growth, hardiness and continuous production of lovely, light silver-pink flowers

with a deeper pink on the reverse side of the petal. Upright and disease resistant, flowering under all weather conditions.

**RED RADIANCE**—As

good as its parent, Radiance, in habit of blossom and growth. Lovely deep red with an intense fragrance.

**SOUVENIR DE CLAUDIUS PERNET**—Unlike most yellow roses, the color of this excellent new variety does not fade as the buds open up and the petals become exposed to the sun. Long, pointed buds, opening up to large, full, sunflower-yellow blooms. Bushes vigorous and erect. One of the very finest of the new varieties. \$1.25 each, 5 for \$5.50, 10 for \$10.00.

**SUNBURST**—A handsome, long, yellow bud, opening to cup-shaped flower of light sulphur yellow. Plant strong and spreading with few thorns.



Luxemburg Rose

## Polyantha Roses

This class does equally well indoors and can be dug up and potted in the fall and kept in bloom all winter.

**Prices of Polyantha Roses:** Strong two-year-old bushes, 90 cents each, 5 for \$4.00, 10 for \$7.50. By parcel post, postpaid, for 5 cents per bush extra.

**WHITE BABY RAMBLER**—Compact bush, 1½ to 2 feet high, with clusters of small white flowers.

**CRIMSON BABY RAMBLER**—A bush form of the Crimson Rambler.

## Two Good Tea Roses

**Prices of Tea Roses:** Strong two-year-old bushes, 90 cents each, 5 for \$4.00, 10 for \$7.50. By parcel post, postpaid, for 5 cents per bush extra.

**MME. F. KRUGER**—An old favorite with creamy yellowish-pink buds. Free bloomer on long, slender stems with dainty foliage.

**WILLIAM R. SMITH**—One of the most perfectly formed roses in existence, long, white, slightly tinged pink buds, opening slowly, with most perfect foliage, a splendid keeper.

*Our Roses Will Bloom the Same Season Planted*

**CLIMBING ROSE COLLECTION**

4 Extra Strong 2-Year Bushes for \$1.75

- 1 Climbing American Beauty (Rose-Pink)
- 1 Crimson Rambler (Crimson)
- 1 Dorothy Perkins (Shell-Pink)
- 1 White Dorothy (White)

By Parcel Post,  
\$1.95, PostpaidSpecial Price . **\$1.75****Hybrid Perpetual Roses**

Hybrid Perpetual Roses are not as free-blooming as the Hybrid Teas, but are completely hardy and of vigorous growth. They bloom tremendously in June and sometimes sparingly until autumn.

Prices of Hybrid Perpetual Roses: Strong two-year-old bushes, 90 cents each, 5 for \$4.00, 10 for \$7.50. By parcel post, postpaid, for 5 cents per bush extra.

**FRAU KARL DRUSCHKI (Snow Queen)**—An ideal, hardy, pure snow-white rose. Perfect in flower, strong in growth and very free-flowering.

**GENERAL JACQUEMINOT**—An old favorite and one of the best known of all roses. Brilliant scarlet crimson.

**MADAM PLANTIER**—Large, white, double flowers, wonderful fragrance, produced in abundance early in the season.

**MAGNA CHARTA**—Large flowers of rose carmine, very fragrant and free on strong plants.

**PAUL NEYRON**—Probably the largest rose in existence, fragrant, cream pink blossoms on long stems.

**Moss Roses**

Moss Roses bloom but once a season, but the flowers remain in bloom a long time. Much admired for the beautiful moss covering of the buds.

Prices of Moss Roses: Strong two-year-old bushes, 90 cents each, 5 for \$4.00, 10 for \$7.50. By parcel post, postpaid, for 5 cents per bush extra.

**WHITE MOSS**—Pure white flowers of medium size, full, free and vigorous.

**PINK MOSS**—Fragrant, rosy pink buds crested with rich green moss.

**RED MOSS**—Large red flowers of great beauty heavily mossed with a deep green.



A Gorgeous Display of Climbing Roses

**Hardy Climbing Roses**

The Climbers or Ramblers not only afford a burst of bloom upon trellises, over fences and hedges, against the porch or the home, but having attractive foliage they are an object of beauty and ornament even when not in bloom.

Prices of Hardy Climbing Roses: Strong two-year-old bushes, 60 cents each, 5 for \$2.50. By parcel post, postpaid, for 5 cents per bush extra.

**CLIMBING AMERICAN BEAUTY**—One of the best climbing roses. Healthy, vigorous growth, making 10-foot shoots. A lovely, deep, rich, rose-pink bloom of splendid form on a long stem.

**CRIMSON RAMBLER**—Unusually vigorous. Produces a great profusion of medium size, double red blossoms.

**DOROTHY PERKINS**—Full, double, shell-pink flowers in large clusters, very attractive.

**DR. VAN FLEET**—Lightest shell pink to silver flesh. Double.

**EXCELSA**—Red Dorothy Perkins. Very double, crimson, produced in large clusters.

**HIAWATHA**—Single crimson flowers with white base.

**PAUL'S SCARLET CLIMBER**—The brilliant, vivid scarlet which this rose maintains until the petals fall puts it in a class by itself. Good-sized flowers, freely produced in clusters of from 3 to 20, literally cover the plant with bloom. Strong and perfectly hardy.

**SILVER MOON**—A beautiful, semi-double, pure white rose four inches in diameter, with a cluster of prominent yellow stamens in the center which greatly add to its attractiveness.

**TAUSENDSCHON (Thousand Beauties)**—Varies in color. A beautiful combination of colors, including several shades of pink. Semi-double.

**VEILCHENBLAU (Blue Rambler)**—Double flowers of light lilac, fading to light purple and blue.

**WHITE DOROTHY**—A duplicate of Dorothy Perkins except in color.

**YELLOW RAMBLER**—Yellow buds, which fade to creamy white as the flower opens. Strong and hardy.

**BUSH ROSE COLLECTION**

(See back cover for illustration in colors)

10 Extra Strong 2-Year Bushes for \$7.35

- 1 Frau Karl Druschki (White)
- 1 Madam Butterfly (Apricot)
- 1 Los Angeles (Flame Pink)
- 1 Paul Neyron (Cream Pink)
- 1 Duchess of Wellington (Yellow)
- 1 Columbia (Pink)
- 1 Souvenir De Claudius Permet (Yellow)
- 1 General Jacqueminot (Crimson)
- 1 Gruss An Teplitz (Dark Crimson)
- 1 Pink Radiance (Pink)

By Parcel Post,  
\$7.85, PostpaidSpecial Price . . **\$7.35**

Our Roses Are All Hardy, Northern-Grown Field Roses



# Perennials

## Add Beauty and Charm



**A**S THE trees and shrubs make the setting for the house, so the perennials form the nucleus of the flower garden. A well arranged, hardy border adds interest and delight to every home. Beginning to flower in the early spring and continuing until frost, without special care other than good soil and occasional cultivation, they produce a mass of color and an unailing supply of flowers for cutting.

The growing popularity of perennials is due to their loveliness, plus their hardiness, for they withstand zero weather with only a protection

of leaves. A yearly mulch of well-rotted manure or a liberal scattering of bone meal is gratefully received if the soil is poor.

These old-fashioned flowers may be effectively combined with shrubs by using them in the foreground, but the favorite combination is with annuals, either in a garden or a border planting. In case of the latter, the ornamental grasses, yucca, hollyhocks and belladonna larkspur are used as a background to the lower-growing perennials and annuals.

We offer only strong, field-grown plants that will bloom the first year with either spring or fall planting, spring preferred.

**STRONG PLANTS**—Prices (except Yucca): 25 cents each, 10 for \$2.00.

**Parcel Post:** Perennial plants can be sent by parcel post, postpaid, for 2 cents per plant extra.

**ANCHUSA (Dropmore)**—This is one of the choicest hardy border plants, growing from 4 to 6 feet with good culture. It is fully covered with pure blue flowers an inch in diameter, which are of a surpassing beauty and loveliness. It flowers in May, lasting about two months in bloom.

**ANEMONE (Pink)**—Same as white anemone except soft rose pink flowers.

**ANEMONE (White)**—One of the most desirable fall blooming perennials. Tall, pure white blooms with deep yellow stamens, producing a succession of flowers during September and October. 18 to 24 inches high.

**CANTERBURY BELL (Campanula Medium)**—With its handsome spikes of bell-shaped flowers of porcelain-blue, rose-pink, and white, the Canterbury Bell makes a gorgeous showing in the garden in July. Plants 2 to 3 feet high. Order by color.

**COLUMBINE (Aquilegia—Long-Spurred Hybrid)**—An old garden favorite. Thrives well in shady places where most plants cannot grow. One of the most beautiful of hardy plants, producing an abundance of graceful, peculiar-shaped flowers with long, slender spires. A most varied and delicate combination of colors, blue, white, yellow, pink, cream, lavender, red, scarlet and orange mixed together. Height, 2 to 4 feet.

**COREOPSIS (Lanceolata Grandiflora)**—A beautiful, hardy border plant that grows 15 to 18 inches high and produces its bright, golden yellow flowers from June until frost.



Columbine



Hollyhocks

**FOX GLOVE (Digitalis Gloxiniflora)**—An old time favorite. Tall spires, 4 to 6 feet high, of inflated, bell-shaped flowers in shades of white, rose and purple mixed together. Beautifully spotted. It makes a fine background for lower-growing plants.

**GOLDEN GLOW (Rudbeckia Laciniata)**—Tall-growing, hardy perennial about 6 feet high. Produces a multitude of large, double, golden yellow flowers in August and September.

**HARDY ASTER (Michaelmas Daisy)**—Among the showiest of our late-flowering, hardy, native plants, giving a wealth of blooms in summer and late fall. Easy to grow and very popular. We offer a fine collection in mixed colors.

**HARDY CHRYSANTHEMUMS (Pompons)**

—The well-deserved popularity of this hardy plant is largely due to its abundance of beautiful flowers in the dull November days when every other hardy plant has succumbed to the frost. They can be had indoors, either cut or as potted plants. As cut flowers they have no equal for lasting qualities, remaining fresh for several weeks. We offer a fine collection of Pompon varieties in four distinct colors, white, red, pink, and yellow. Order by color.

**HEMEROCALLIS**—Lovely, yellow day lilies, hardy, succeeding everywhere. One of the most popular perennials and should be included in every garden. 12 to 18 inches high.

**HEPATICA (Liver Leaf)**—A very hardy, native, spring-flowering plant, which thrives well in extremely shady places. One of the very earliest to bloom in the spring. We offer them in mixed colors of light blue, pink and white.

See Colored Illustrations of Perennials on Inside Front Cover



Yucca

sorts in five separate colors, pink, white, yellow, dark red and scarlet. Order by color.

**IRIS**—Four colors of this most desirable and most easily grown, hardy plant. A mass of bloom in May and June. Roots should be barely covered with soil. Yellow, purple, blue and bronze. Order by color. Grows 18 to 24 inches high.

**LARKSPUR (Delphinium Belladonna)**—Plants 2 to 3 feet high, bearing mammoth spikes of sky blue flowers. Cut back severely after flowering to produce a succession of bloom.

**LILY-OF-THE-VALLEY**—This popular and fragrant old-time favorite is a delightful addition to any planting. It is grand for massing near shrubs or along shaded corners.

**OSTRICH PLUME (Ornamental Grass)**—Long, narrow, green leaves, 4 to 6 feet long, with white stripes along center. Beautiful plumes resembling ostrich plumes when dry.

**OXSLIP (Primula Primrose)**—Large, bright yellow flowers produced in great profusion in early spring.

**SHASTA DAISY (Chrysanthemum Maximum)**—Large snow-white flowers with bright yellow centers borne on long stiff stems from June to September. Plants 1 to 2 feet high.

**YUCCA (Filamentosa)**—A subtropical plant resembling the century plant in foliage. Long, narrow, green leaves with tall spikes, 3 to 5 feet high, of large, bellshaped, white blossoms resembling the lily. **Strong plants: Prices, 35 cents each, 10 for \$3.00.**

**HEUCHERA SANGUINEA**—Lovely, coral pink bells on slender stems, producing flowers throughout the season. About 6 to 8 inches high.

**HIBISCUS MALLOWS MARVEL**—A new introduction valued for its large, attractive flowers, measuring 6 to 8 inches in diameter. A mixture of various shades of pink, red and white.

**HOLLYHOCKS**—Unrivalled favorites everywhere. No perennial garden is complete without a few. Planted in the back of the hardy border, massed in fence corners or scattered among the shrubbery, they produce a bold and showy effect hard to duplicate. Their towering spikes, 4 to 6 feet high, are a mass of flowers all summer. We offer a fine collection of double



Phlox

## GREEN'S SPECIAL PHLOX COLLECTION

10 Strong Plants for \$1.85

2 Athis (Pink)  
2 Mrs. Jenkins (White)  
2 Sir Edwin Landseer (Crimson)  
4 Green's Selection

Big Value at . . . **\$1.85**

By Parcel Post, \$2.05 Postpaid

## Hardy Phlox

Unsurpassed for brilliant, bold color effect. Very effective when planted in a border of hardy perennials or in large groups on the lawn. Desirable for planting in front of tall-growing shrubs. They bloom in July and August at a time when few other plants are in flower, but by pinching back the first buds the blooming period can be extended until frost. Watering them in periods of drought is well worth while as the size of the bloom is greatly increased.

**Prices of strong plants, 25 cents each, 10 for \$2.00. Parcel Post: Phlox can be sent by parcel post, postpaid, for 2 cents per plant extra.**

**ATHIS**—Deep, clear, salmon pink. Large and strong.

**MRS. JENKINS**—Immense panicles of pure white flowers.

**LA VAGUE**—Clear, silvery rose.

**PANTHEON**—Cerise-salmon, white center, branching spikes.

**PERCHEAU d'ISLAND**—Deep red.

**RHEINLANDER**—Salmon pink with claret eyes.

**SIR EDWIN LANDSEER**—Very bright crimson. Free grower.

**GREEN'S MIXTURE PHLOX**—We offer in addition to the above named varieties, our own mixture of unnamed sorts, ranging in color from pure white to dark red, and including almost all shades and combinations of colors. Very desirable for mass planting where separate colors are not required. **Prices of mixed Phlox, 20 cents each, 10 for \$1.75.**

## MIXED HOLLYHOCKS

Our own mixture of colors. Very desirable for mass planting where separate colors are not required. **Special price, 15 cents each, 10 for \$1.25.**

# Paeonies

## Most Beautiful of Perennials

**T**HE most magnificent of all the perennials. The blooms are of great size and of a wide range of colors. In bloom from the middle of May until the first of July. They last well and are excellent for cutting. Plant the roots in deep, rich soil, setting them not more than 3 inches deep. The first year the blooms are not always true to type as even the most perfect double types will ordinarily produce single blooms the first season after planting.

**Prices:** Strong roots, 50 cents each (except where otherwise noted).

**Parcel Post:** Paeonies can be sent by parcel post, postpaid, for 5 cents per root extra.

**DELACHEI**—Large, medium compact, rose type. Violet crimson, slightly tipped with silver. Strong, erect, medium height, very free bloomer. Late mid-season.

**DORCHESTER**—Large, compact, rose type. Pale hydrangea pink. Fragrant. Medium dwarf. Upright free bloomer. Late.

**EDULIS SUPERBA**—Large, loose, flat crown. Bright mauve pink. Collar striped with narrow lilac. Fragrant. Strong, upright, very free bloomer. Early.

**ELLA CHRISTINE KELWAY**—Large, cup-shaped, rose type. Lilac white guards, cream white central petals, crimson carpels and stigmas. Fragrant. Medium height. Strong grower. Midseason.

**FELIX CROUSSE**—Bright ruby red, large, compact. A strong grower with long stems. Midseason. Price 75 cents each.

**FESTIVA MAXIMA**—Very large, globular, rose type.

Pure white center prominently flecked with crimson. Outer petals sometimes faint lilac white on first opening. Very tall, strong, vigorous grower. Early.

**GREEN'S MIXTURE PAEONIES**—In addition to the above named varieties we have a mixture of red, white and pink unnamed sorts, which are very desirable for mass planting where separate colors are not required. Price of strong roots, 35 cents each.

### WELL PLEASED WITH GREEN'S SHRUBS

Green's Nursery Co.:

I am delighted with the trees I received from you this spring. They are all healthy and healthy-looking. Despite the backward spring the rose bushes are coming along fine. The *Philadelphus Virginialis* is beautiful, just a mass of blossoms and so fragrant. I am more than pleased with all.

Viola A. Bass,  
Gloucester, Mass.,

July 1, 1926.



Festiva Maxima

### GREEN'S EVERGREENS GROW

Green's Nursery Co.: The evergreens I bought of you this spring are all growing nicely. Next spring I will send you another order.—Edwin H. Houck, Mt. Bethel, Pa., June 24, 1926.

Landscape your home the Green way. It is easy and economical. See details on page 38.



### GREEN'S FAMOUS PAEONY COLLECTION

4 Choice Paeonies for \$1.95

- 1 Festiva Maxima (Crimson)
- 1 Edulis Superba (Pink)
- 1 Delachei (White)
- 1 Green's Selection

Special Price . . . **\$1.95**

By Parcel Post, \$2.15, Postpaid

*Paeonies Are Among the Hardest of Flowers*

# Gladioli

No garden is complete without some of these glorious, summer-flowering bulbs. Any good garden soil will grow gladioli if fully exposed to the sun. If your soil is heavy or stiff, work in a liberal amount of well-rotted manure in the fall. Planting can be done as soon as the frost is fully out of the ground in the spring. Set bulbs two to four inches deep and four inches apart. After the blooming season is over they should be lifted carefully, shaken free of earth and allowed to dry in the sun for a day or two. Then cut off the stalks close to the bulbs and store them away in a cool, dry place in open boxes or shallow baskets.

**Strong bulbs:** Prices (except where otherwise noted) 10 for 60 cents, 100 for \$4.50.

**Parcel Post:** Gladiolus bulbs can be sent by parcel post, postpaid, for 5 cents per 10 bulbs, or 35 cents per 100 bulbs, extra.

**AMERICA**—Beautiful, soft flesh pink faintly tinged with lavender.

**AUGUSTA**—Lovely, pure white with blue antlers.

**CHICAGO WHITE**—Pure white with lavender stripes on lower petals.

**CRACKER JACK**—Dark red, throat spotted with yellow and maroon.

**MRS. FRANCIS KING**—Pure light scarlet. Flowers large.

**MRS. FRANK PENDLETON, JR.**—Delicate salmon pink with blood-red blotch in throat.



A Bunch of Gladiolus Blossoms

**SCHWABAN**—Pure canary yellow shaded with sulphur color. The golden yellow throat is slightly blotched with dull carmine.

**PRIMULINUS HYBRIDS**—A new, distinct, small-flowered type. We offer a mixture of beautiful shades of yellow and orange.

**GREEN'S MIXTURE GLADIOLUS**—In addition to the above named varieties we offer a mixture of unnamed varieties of all colors and descriptions. Very desirable for mass planting where separate colors are not desired. Prices, 10 for 35 cents, 100 for \$3.00.

# Dahlias

This good, old-fashioned, fall-blooming plant has increased so rapidly in popularity that it now holds a place second to no other plant in the garden. Owing to its free-growing habit it requires little care and is very easily grown. The blossoms are of all conceivable shapes and colors. We can furnish the following colors: purple, red, rose pink, yellow, white, lavender, orange; variegated, red and yellow, lavender and white. Please specify color when ordering, or if you prefer you can leave the selection of colors to us and we will be glad to see that a desirable collection of colors is sent you. **Strong bulbs, 30 cents each, 10 for \$2.75.**

**Parcel Post:** Dahlias can be sent by parcel post, postpaid, for 2 cents per bulb extra.



A Blossom of Dahlia

Pick beautiful fragrant roses in your own yard. See Green's Rose Collections, page 42, and on back cover.

*Buy Direct from Green's Nursery and Save Money*

# Ornamental Vines

**A** HOME planting is seldom complete without at least a few ornamental vines. They add a certain charm and grace not obtained from any other source. Vines keep the home cool in summer and furnish protection and shade to the porch, arbor and pergola. When planted close to a building the top soil should be replaced to the depth of a foot or two with rich garden soil, as the soil immediately about the foundation of a house is usually subsoil thrown up in the digging of the cellar.

**Strong Two-Year-Old Vines—Prices (except where otherwise noted): 50 cents each, 10 for \$4.50.**

**Parcel Post:** Wistarias can be sent by parcel post, postpaid, for 10 cents per vine extra. Other vines at 5 cents per vine extra.

## BOSTON IVY (*Ampelopsis Veitchii* or Japan Ivy)—

It is a rapid grower and clings to brick or stone walls without artificial fastening. The foliage is handsome dark green in summer, changing to crimson and yellow in autumn. It is a little tender while young and requires protection the first winter, but once established there is no further risk. Price, strong two-year-old vines, 85 cents each, 10 for \$8.00.

**CLEMATIS JACKMANNI—**A large-flowering variety, the flowers often 4 to 6 inches in diameter, intense violet-purple with a rich, velvety appearance. It blooms continually from July until frost. Prices, 85 cents each, 10 for \$8.00.

**CLEMATIS PANICULATA—**A rapid-growing vine, with handsome, clean, glossy foliage and medium sized, star-shaped, fragrant, white flowers in September when few other vines are in blossom. Very attractive and probably the most largely planted of all the vines.



Clematis Paniculata



Wistaria

## DUTCHMAN'S PIPE—

A very rapid-growing vine, which on account of its very large heart-shaped leaves is desirable when dense shade is required. Obtains its name from its peculiar brownish flowers, resembling in shape a miniature pipe. Prices, \$1.25 each, 10 for \$10.00.

**HALL'S JAPAN HONEYSUCKLE—**One of the most popular of all the climbing vines, which in addition to its ordinary uses as a climber is valuable for covering banks, bare spaces, etc., where grass will not grow. Flowers white, changing to yellow, very fragrant and in bloom the whole season.

**TRUMPET VINE—**A grand old favorite. Showy, orange-scarlet flowers and evergreen leaves. A strong grower often over 30 feet tall. Fine for training on walls, trellises, trunks of trees and arbors.

## VIRGINIA CREEPER (*American Ivy* or Woodbine)—

The well-known native ivy with five-parted leaves that change to scarlet in fall. Blue-black berries. Hardy and quick-growing. Requires artificial support on walls.

**PURPLE WISTARIA—**Very desirable for heavy trellises and pergolas, also attractive if trained to old trees. Pea-shaped, purple flowers in dense, pendant clusters sometimes a foot long. Blooms in May.

**WHITE WISTARIA—**A white-flowering form of the Purple Wistaria. Same as above except in color of blossom.

**BLUE WISTARIA—**Probably the best of the Wistarias. It flowers while very young and produces abundant, loose clusters of deep blue flowers, sometimes two feet long. Blooms in May.

### ALWAYS TRUE TO NAME

Green's Nursery Co.: In 1891 my husband and I bought our trees of you and I never saw trees grow as they did. The varieties were true to name and are still bearing. Our orchard is in Corvallis, Oregon.—Mrs. H. L. French, Stockton, California, April 23, 1926.

Beautify the entrance to your home with Green's Evergreens. See page 29.



# INDEX

	<i>Page</i>		<i>Page</i>		<i>Page</i>
Althea . . . . .	33	Golden Glow . . . . .	43	Ornamental Shrubs . . . . .	33-37
Anchusa . . . . .	43	Golden Spiraea . . . . .	36	Ornamental Trees . . . . .	31, 32
Anemone . . . . .	43	Golden Syringa . . . . .	37	Ornamental Vines . . . . .	47
Apples . . . . .	5-9	Gooseberries . . . . .	25	Ostrich Plume . . . . .	44
Apricots . . . . .	20	Grapes . . . . .	22, 23	Oxslip . . . . .	44
Arborvitae . . . . .	29	Guelder Rose . . . . .	35		
Ash . . . . .	32			Paeonies . . . . .	45
Asparagus . . . . .	28	Hard Maple . . . . .	32	Peaches . . . . .	10-12
		Hardy Aster . . . . .	43	Pearl Bush . . . . .	37
Barberry . . . . .	40	Hardy Chrysanthemum . . . . .	43	Pears . . . . .	13-15
Birch . . . . .	31	Hawthorne . . . . .	32	Perennials . . . . .	43-44
Blackberries . . . . .	25	Hazelnut . . . . .	21	Phlox . . . . .	44
Blue Spruce . . . . .	30	Hedges . . . . .	40	Pieplant . . . . .	28
Boston Ivy . . . . .	47	Hemerocallis . . . . .	43	Pine . . . . .	29
Bulbs . . . . .	46	Hepatica . . . . .	43	Plums . . . . .	18, 19
Butterfly Bush . . . . .	33	Heuchera Sanguinea . . . . .	44	Poplar . . . . .	32
Butternuts . . . . .	21	Hibiscus Mallow Marvels . . . . .	44	Privet, California . . . . .	40
		High Bush Cranberry . . . . .	37	Privet, Regel's . . . . .	37
California Privet . . . . .	40	Hollyhocks . . . . .	44	Purple-Leaved Plum . . . . .	32
Canterbury Bell . . . . .	43	Honeysuckle Bush . . . . .	34	Prunus Triloba . . . . .	37
Carolina Poplar . . . . .	32	Honeysuckle Vine . . . . .	47	Pyramidal Arborvitae . . . . .	29
Catalpa . . . . .	31	Horse Chestnut . . . . .	32		
Cherries . . . . .	16, 17	Horse Radish . . . . .	28	Quinces . . . . .	20
Chestnut . . . . .	32	Hydrangea . . . . .	34		
Clematis . . . . .	47			Raspberries . . . . .	26
Columbine . . . . .	43	Indian Currant . . . . .	35	Roses . . . . .	41, 42
Coreopsis . . . . .	43	Iris . . . . .	44	Rose of Sharon . . . . .	33
Coral Berry . . . . .	35			Rhubarb . . . . .	28
Crab, Flowering . . . . .	31	Japan Quince . . . . .	35		
Currants . . . . .	24	Japanese Cherry . . . . .	32	Sage . . . . .	28
		Japanese Snowball . . . . .	35	Shasta Daisy . . . . .	44
Dahlias . . . . .	46	Japanese Tree Lilac . . . . .	37	Shrubs . . . . .	33-37
Deutzia . . . . .	33, 34	Junipers . . . . .	30	Silver Maple . . . . .	32
Dogwood . . . . .	31			Snowball . . . . .	35
Dutchman's Pipe . . . . .	47	Kerria Japonica . . . . .	37	Snowberry . . . . .	35
Dwarf Apples . . . . .	9			Soft Maple . . . . .	32
Dwarf Barberry . . . . .	40	Landscape Plans . . . . .	38, 39	Spiraea . . . . .	36, 37
Dwarf Pears . . . . .	15	Larkspur . . . . .	44	Spruce . . . . .	30
		Lilacs . . . . .	35	Strawberries . . . . .	27
Elm . . . . .	31	Lily-of-the-Valley . . . . .	44	Sugar Maple . . . . .	32
Evergreens . . . . .	29, 30	Linden . . . . .	31	Syringa . . . . .	37
		Lombardy Poplar . . . . .	32		
Filberts . . . . .	21			Trumpet Vine . . . . .	47
Flowering Almond . . . . .	37	Maple . . . . .	32		
Flowering Cherry . . . . .	32	Mock Orange . . . . .	37	Vines . . . . .	47
Forsythia . . . . .	34	Mountain Ash . . . . .	32	Virginia Creeper . . . . .	47
Fox Glove . . . . .	43	Mulberry . . . . .	20, 32		
				Walnuts . . . . .	21
Garden Roots . . . . .	28	Norway Maple . . . . .	32	Weigela . . . . .	37
Gladioli . . . . .	46	Norway Spruce . . . . .	30	Willow . . . . .	32
Globe Arborvitae . . . . .	29	Nuts . . . . .	21	Wistaria . . . . .	47
Golden Bell . . . . .	34			Yucca . . . . .	44
Golden Elder . . . . .	34	Oak . . . . .	31		
		Oriental Plane . . . . .	32		

The Delicious  
**CACO  
RED GRAPE**

This new red grape has the most delicious flavor and highest quality of any grape we have ever tested. Experts claim Caco equals in quality and melting texture the finest varieties grown under glass. The berries are unusually large, bunches of good size, compact and good form. It is one of the earliest grapes. Ripens here early in September.

See page 23 for full description

Price of extra size two-year-old  
Caco Grape Vines, only

**60<sup>c</sup>**



The New  
**CORTLAND  
APPLE**

The American Pomological Society awarded to the Cortland the Wilder Silver Medal for new fruits. To qualify for a Wilder Medal a new fruit must exhibit superiority to all existing varieties with which it will compete. We predict the Cortland will soon be the leading apple in the United States. Unusual value at **80<sup>c</sup>** each and up

See page 7 for details





### NATIONAL ROSE SELECTION

*Varieties chosen by popular vote of  
Rose Lovers of America*

- |                          |                                |
|--------------------------|--------------------------------|
| 1. Frau Karl Druschki    | 6. Columbia                    |
| 2. Madam Butterfly       | 7. Souvenir De Claudius Pernet |
| 3. Los Angeles           | 8. General Jacqueminot         |
| 4. Paul Neyron           | 9. Gruss an Teplitz            |
| 5. Duchess of Wellington | 10. Pink Radiance              |

#### PRICES OF ROSES

Souvenir De Claudius Pernet, \$1.25 each. All other varieties above, 90 cents each, 5 for \$4.00, 10 for \$7.50. By parcel post, postpaid, 5 cents per bush extra.

#### SPECIAL COLLECTION.

One bush each of above ten varieties all for

**\$7.35**

By parcel post, postpaid, \$7.85

For description of these roses, see pages 41-42