

This map and accompanying digital data represent part of a scientific effort to enhance geologic map data for the Wrangell-Saint Elias National Park and Preserve. The geologic data were derived from a synthesis of geologic maps of various scales and dates and geologic maps of various scales and dates. The data are presented here as a mosaic map of 1:250,000 scale. The geologic data were derived from a synthesis of geologic maps of various scales and dates and geologic maps of various scales and dates. The data are presented here as a mosaic map of 1:250,000 scale. The geologic data were derived from a synthesis of geologic maps of various scales and dates and geologic maps of various scales and dates. The data are presented here as a mosaic map of 1:250,000 scale.

Scale 1:250,000
 Contour interval, 500 feet
 North arrow
 Map location



Geologic Map of the Wrangell-Saint Elias National Park and Preserve, Alaska
 Compiled by Donald H. Richter, Cindi C. Preller, Keith A. Labay, and Nora B. Shew

3066

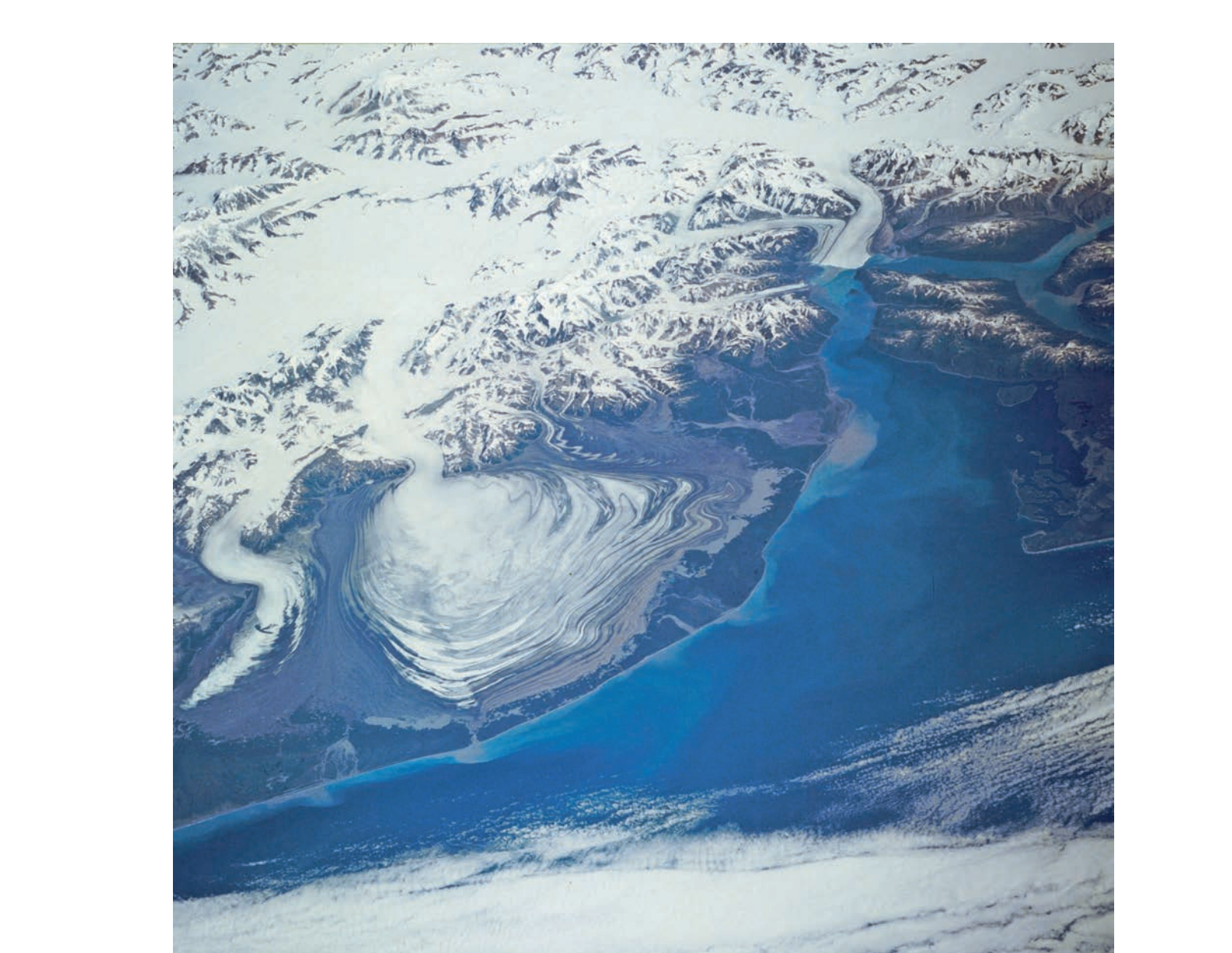
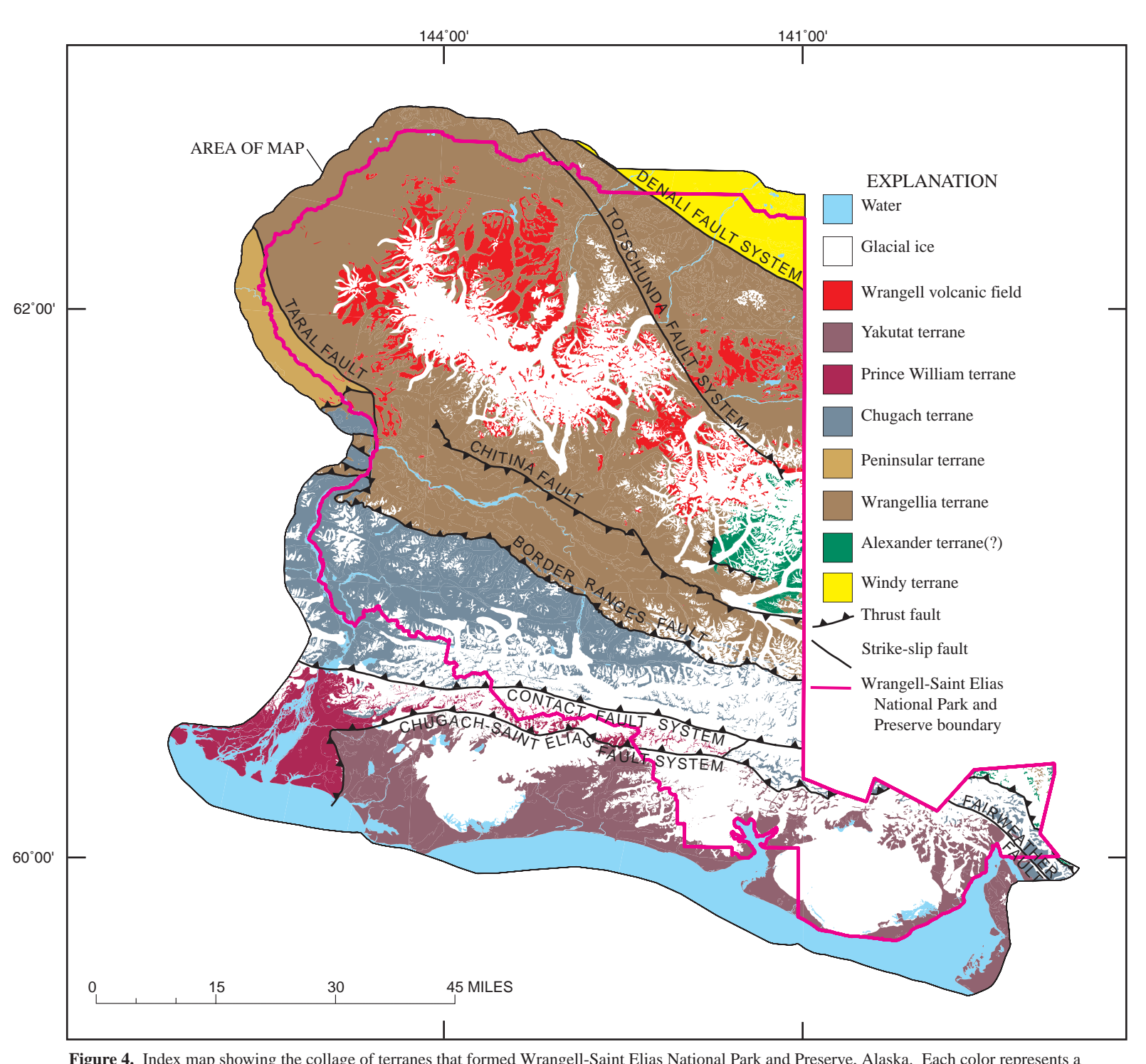
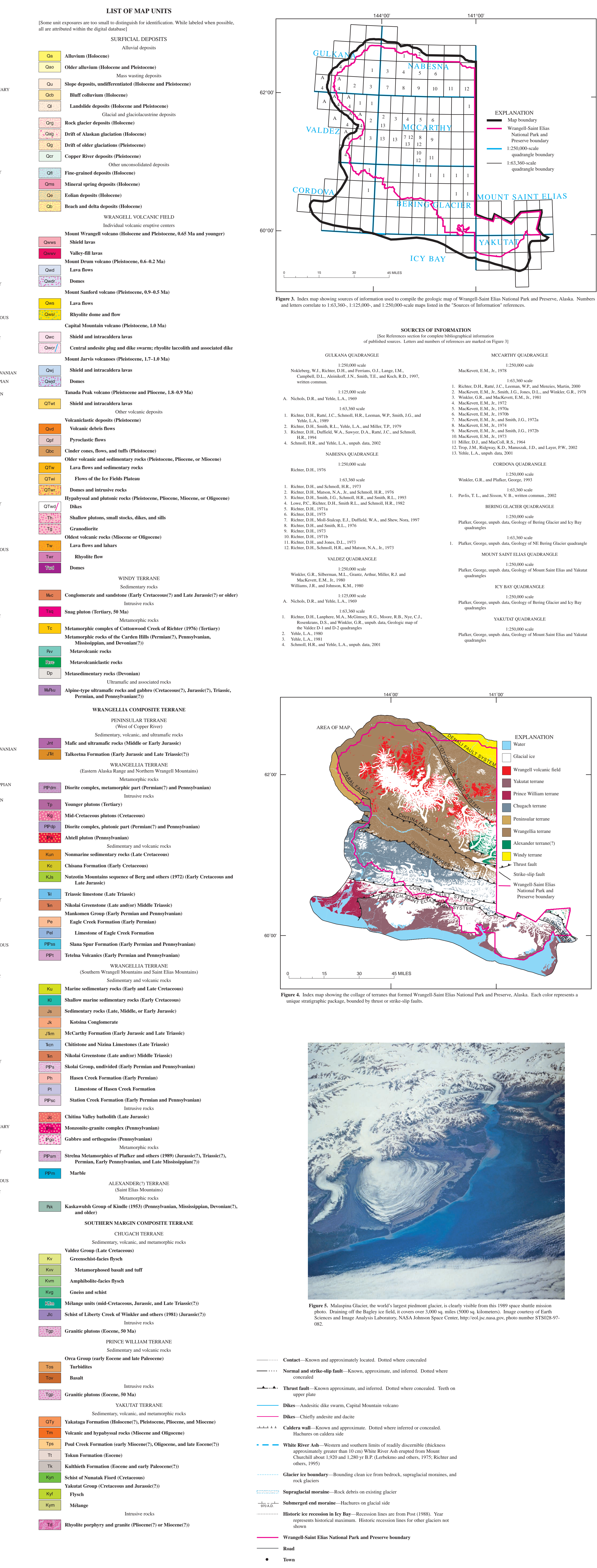
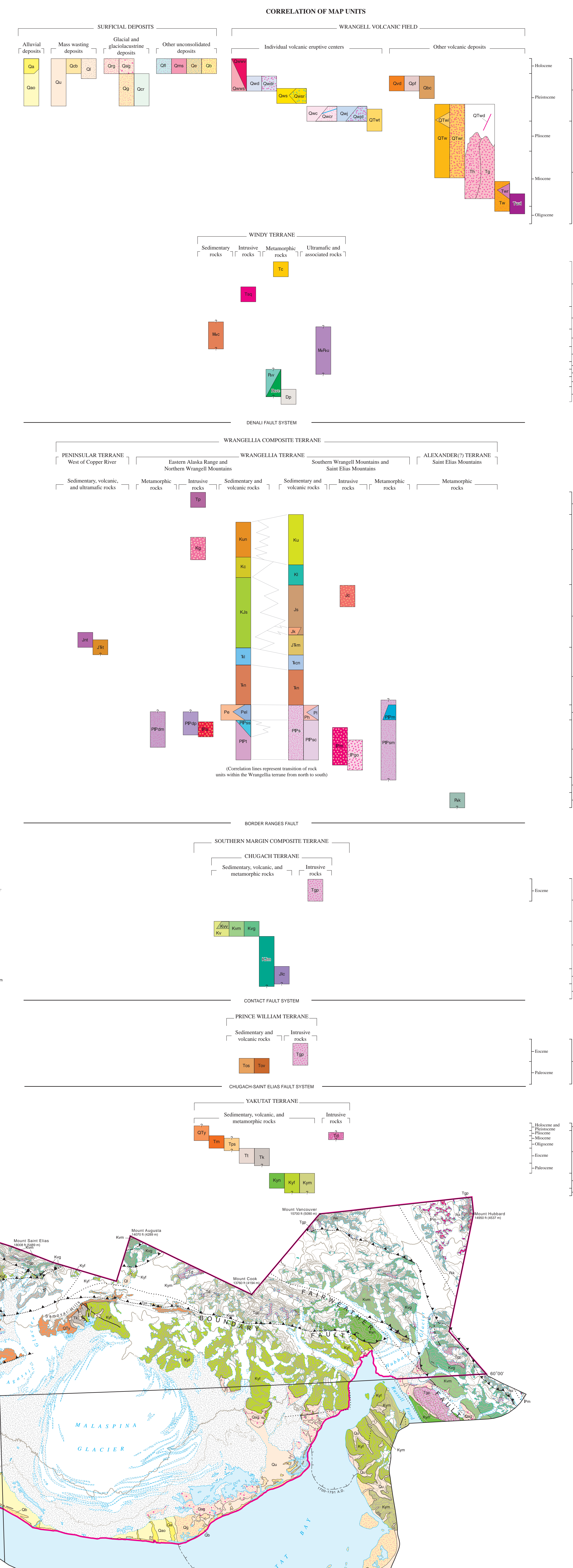
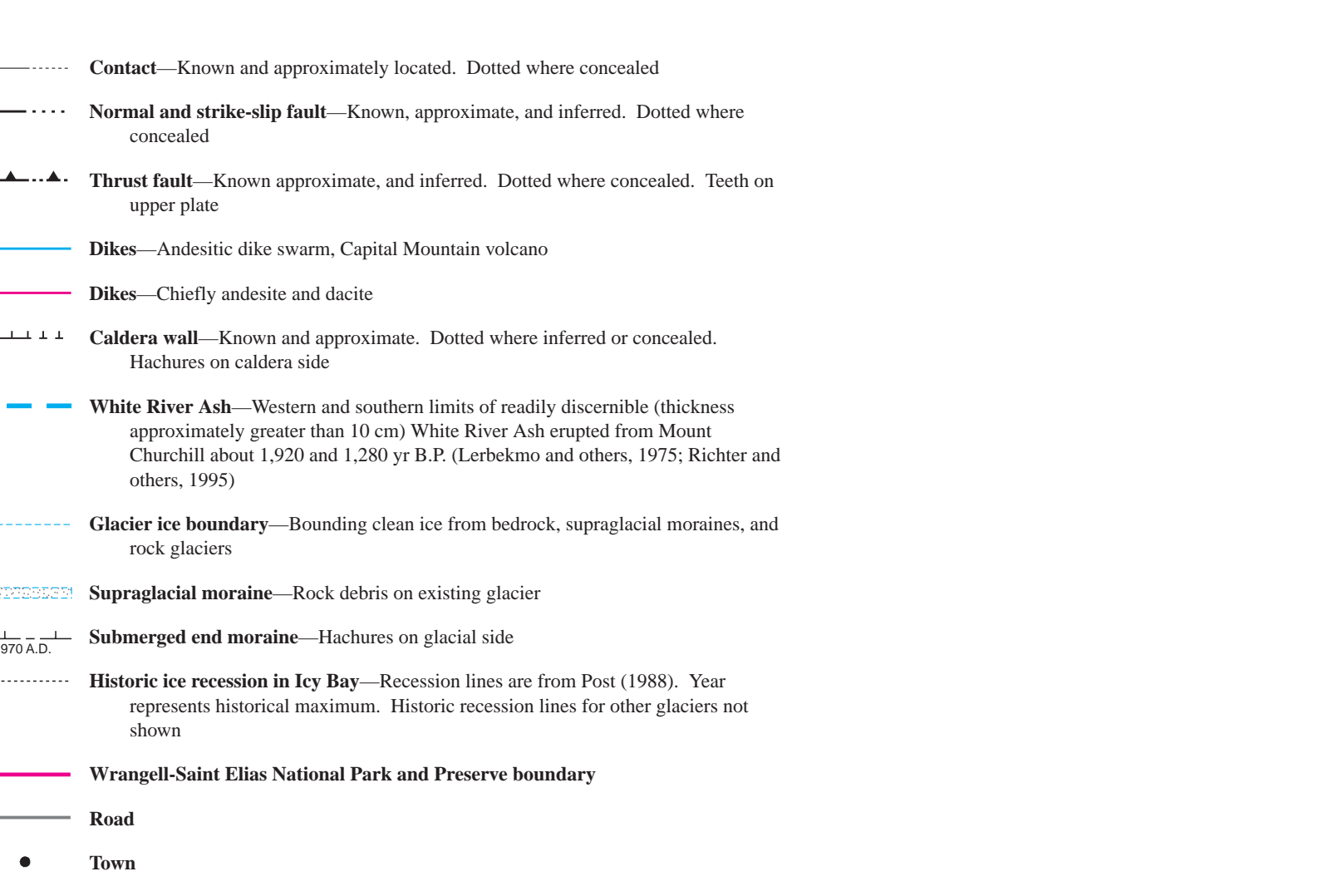


Figure 5. Malaspina Glacier, the world's largest piedmont glacier, is clearly visible from this 1999 space shuttle remote sensing image. Flowing off the Agassiz ice field, it covers over 1000 sq miles (2600 sq kilometers). Image courtesy of Earth Science and Image Analysis Laboratory, NASA Johnson Space Center. Map by Joe Campagna (after Shew 2002:97-98).



Geologic map of the Wrangell-Saint Elias National Park and Preserve, Alaska. Scale 1:250,000. Contour interval, 500 feet. North arrow. Map location.

3067