

Historic, archived document

Do not assume content reflects current scientific knowledge, policies, or practices.

62,97

1923

LIBRARY
 RECEIVED
 ★ FEB 23 1923
 U. S. Department of Agriculture

CATALOGUE AND PRICE LIST OF

The Northwood Nurseries

The Home of the Flowers

KOETHE BROS., Props.



Coon Valley, Wisconsin

Phone Coon Valley, No. 8-L 15.



To the Public:—

Most people love flowers. It seems instinctive to man; and why should it not? The Creator placed Adam and Eve in the Garden of Eden to keep it; and more and more we are beginning to realize the enobling and refining influence of attractively planted homes; and the soothing effects of getting back to nature, whose rejuvenating breath is like a benediction. That is why we proclaim the Gospel of beauty and naturalness. Plant Flowers; plant Trees, Shrubs and Vines for beauty and harmony are food for the soul. In presenting this catalogue we have tried to avoid exaggerated descriptions; rather have we endeavored to create a larger appreciation for the beautiful in nature and to promote an interest in Trees and Plants for what they are and the results that can be produced by the proper use of them. Thanking our many friends and the public for their generous patronage in the past, we are,

Yours very truly, KOETHE BROS.

Read Before Ordering

Inspection—Our nurseries are thoroughly inspected by a State Inspector and are licensed under the laws of this state.

Terms—Our terms are cash with order. Remittances should be sent by Postal Money Order, Bank Draft, or Check.

Genuineness—We exercise great care to have our stock true to name and will send out healthy trees and plants only. We will in no way be responsible for the growth, productivity, or genuineness of the stock, as we have no control over it after it leaves our grounds. All orders are accepted under these conditions only.

Prices quoted are for stock at the nursery or on board nearest railroad station, excepting where quotations are made postpaid.

When to Order—Send your order as soon as possible. All orders are filled in the order received and varieties sold out will be withdrawn without notice. We reserve the right to cancel orders should injury befall our stock from causes over which we have no control.

Shipping Instructions—Please state whether you want stock shipped by Freight, Express, or Mail.

Location—Our nurseries are located 12 miles southeast of LaCrosse and four miles northwest of Coon Valley, on State Trunk Highway No. 11. We extend a cordial invitation to all plant lovers and prospective planters to visit our nursery and make their selection while our plants are in bloom.

Prices in This List Cancel All Previous Quotations.



Hardy Flowering Shrubs

A good collection of Flowering Shrubs is not only an unfailling source of pleasure but is absolutely indispensable to the well arranged lawn. Nature plants shrubs with lavish hand along the borders of the woodland. The effect is always restful and beautiful. The attractive home is the one neatly planted with Trees, Shrubs and flowers. Shrubs planted along the borders, massed into the corners, against the porches and sharp angles of the house will greatly enhance the artistic value of any home. Shrub plantings are the harmonizing feature which link the trees, buildings and lawn into one harmonious whole and give that finishing touch of hominess so greatly desired.

All Shrubs, 1 to 1½ ft. plants, 30c each, postpaid; 1½ to 2 ft., postpaid, 50c each; 2 to 3 ft., not prepaid, 75c each. Prices on extra-large Shrubs quoted on application.

SHRUB COLLECTION

Twelve shrubs; 4 varieties, our selection, 12 to 18 inches; sent postpaid for \$2.50.

Spirea prunifolia. Tall-growing, with plum-leaved foliage turning a pretty shade of red in autumn. The drooping branches are loaded with small, double white flowers in May.

S. sorbifolia. Strong, vigorous grower; pretty both in flower and out, the glossy, finely cut leaves giving a pleasing foliage effect. The flowers are creamy white, appearing in large panicles in July.

S. Billardii. A tall-growing shrub, with brownish green foliage and panicles of rich pink flowers in July.



A SPIREA PLANTING

HARDY FLOWERING SHRUBS, Continued.



MOCK ORANGE BLOSSOMS

- S. Arguta*. Snow Garland. Of medium height; literally covered in May with small, snow-white flowers, while the fine, delicate foliage and slender branches give it an air of gracefulness hardly equaled by any other shrub.
- S. callosa alba*. A splendid companion to the Spirea, Anthony Waterer. Of dwarf, dense growth, with white flowers. In bloom all summer.
- S. Van Houttei*. One of the most beautiful of the flowering shrubs; literally covered with pure white flowers in the spring. For specimen shrubs on the lawn, for massing at the base of the house, or forming a beautiful flowering hedge, no shrub is superior.
- S., Anthony Waterer*. An excellent low-growing shrub, with bright red flowers blooming almost throughout the season.
- S. Bumalda*. Similar to Anthony Waterer in growth and habit but with light pink flowers.
- S., Golden*. A pretty variety with white flowers and attractive, golden tinted foliage.
- S. Marguarita*. Tall loose growing shrub with large clusters of rose colored flowers.
- Japanese Quince. Of dense habit, with

rich green foliage almost hidden by large, scarlet flowers in May.

Mock Orange (*Philadelphus*). Flowers white, resembling orange blossoms and not a bad substitute for that noble flower. One of our best shrubs.

Sambucus Canadensis. Common Elder. Tall, native shrub with large cymes of cream-colored flowers followed by large clusters of edible fruit. Useful in all shrub plantings.

Shrubby Cinquefoil. A dwarf shrub, with fine five-cleft foliage and masses of small yellow flowers. Continues in bloom all summer.

Cornus (*Dog Woods*.) A very desirable class of shrubs that deserve to be largely planted. Valuable for producing contrast and beautiful effects in winter.

Red Barked, Yellow Barked, Gray Barked, Blue Barked, White Flowered.

Alpine Currant. An attractive shrub of graceful habit with dense currant like foliage.

FALL PLANTING

Plant Peonies, Iris, Tulips, Narcissus, etc., in Fall. In our latitude Shrubs and Evergreens should be planted in Spring as Fall planting often proves a total failure.



CALYCANTHUS, OR SWEET SHRUB

HARDY FLOWERING SHRUBS, Continued.

**HYDRANGEA, P. G.**

Calycanthus (Sweet Shrub). Large, chocolate-colored flowers, delicately perfumed. The wood and bark of this shrub have the same agreeable odor as the flowers.

Polish Privet. This Privet fills a long-felt want in Northern landscape work. Their rich, glossy foliage blends well with other shrubs. Their great hardiness and graceful, rapid growth make them valuable material for deciduous hedges. Flowers white.

High Bush Cranberry. Resembles the common Snowball in foliage and habit of growth, but the flowers appear in large, flat cymes instead of ball-shaped heads, and are followed by clusters of large red berries, remaining on the plant all winter.

Snowball. The old favorite.

Lilac. We have three colors: Purple, white and rose.

Russian Olive. Large shrub or small tree with narrow silvery white leaves and sweet-scented yellow flowers. Invaluable for forming backgrounds in shrub-group plantings.

Sea Buckthorn. Thorny shrub with narrow bluish gray foliage and masses of orange-colored berries in Autumn.

Caragana (Siberian Pea). Tall shrub with fine, feathery foliage and yellow flowers in May. Fine for mixed plantings.

The above three shrubs make a fine contrast when planted with other shrubs. They are also good for specimens.

Fern-leaved Sumac. Splendid for specimens on the lawn. Of rapid growth, rivaling the palm in gracefulness of foliage. Suitable for backgrounds in shrub plantings.

Staghorn Sumac. Useful in all landscape work. Tall shrub with glossy green foliage and panicles of dark red fruit.

Coral Berry. Small shrub with clusters of red berries during the winter.

**BUSH HONEYSUCKLE**

HARDY FLOWERING SHRUBS, Continued.

Weigela, Eva Rathke. One of the best. Bright crimson flowers.

Siberian Hedgewood. Large, bushy shrub with long, slender willow-like branches and narrow leaves.

Shrubby Wormwood. Grows 8 to 10 feet tall; very dense and bushy, with fine grayish asparagus-like foliage.

Button Bush. A dwarf native shrub with odd, brown, ball-like flowers.

Red Root. Another native shrub of dwarf growth with pretty white flowers. Suitable for edging groups of shrubbery.

Barberry, Thunberg's. A fine shrub for massing, also splendid for single specimens. The green foliage turns to a brilliant scarlet in autumn, while the pretty red berries, which adhere to the bush all winter, present a pleasing ap-

pearance against the snow. One of the finest shrubs for using as an untrimmed hedge.

Golden Elder. A beautiful shrub with golden yellow foliage. Fine for single specimens or affords a pleasing variety when massed with other shrubs.

Hydrangea paniculata grandiflora. One of the most desirable of the hardy shrubs, as it bears its heavy trusses of white flowers at a time when most other shrubs are out of bloom.

Bush Honeysuckle. Valuable, fast growing shrubs. Beautiful at all seasons of the year. Hidden in masses of flowers when they bloom and decked in gem-like berries for a great part of the summer.

Tartarian Red, Tartarian White, Morrow Pink, Grandiflora Rose.

Special—Four Hardy Decorative Shrubs of Exceptional Merit.

Pink Flowering Almond, Own rooted (not budded). This old-time favorite with its wealth of double, pink flowers, strung along the stems like so many gems, should find a place on every lawn. Their wealth of blossoms coming to delight us at a time when there are few other shrubs in bloom. Do not compare our own rooted plants with budded or grafted ones.

Wax Myrtle. A graceful, upright growing shrub; with thick, glossy, almost evergreen leaves; that adhere to the branches far into the Winter. The leaves when crushed emit a delightful, spicy fragrance. The stems are thickly studded with gray, aromatic, wax covered berries.

Sweet Fern. A highly ornamental, round headed shrub that throws up a mass of brown barked stems; thickly set with sweet scented, long, finely dissected foliage, giving it a fern-like appearance and making it one of the finest specimen plants for the lawn.

Pearl Bush (Exochorda). A medium sized shrub with tea green foliage. Coming into flower when most shrubs are out of bloom. The white flowers appear like pearls set among the darker foliage.

Price of either of the above shrubs, 12 to 18 inches, \$1.00 each, postpaid.

RED COLLECTION

Does your garden need a dash of color? This collection of Pink and Red Perennial Flowers will help to brighten

the landscape. 12 plants, 6 varieties, our selection, for \$2.00 postpaid.



FLOWERING ALMOND



A PLEASING PERENNIAL GARDEN

Hardy Perennials

For permanent planting in beds and borders there is an ever-increasing demand for perfectly hardy flowering plants that may be safely left in the ground throughout the winter. Under this class we include all hardy plants the foliage and stems of which die down to the ground each winter to be renewed each spring by a new and more abundant growth. This useful class of plants is fast gaining in popularity. Their varying heights, different periods of flowering, and wide range of colors make them some of the most satisfactory material for the gardener's art. We offer strong field-grown plants which should bloom the first year.

Any Perennial listed, strong plants, 25c each, postpaid.



ASTER

Perennial Asters are particularly valuable on account of their late flowering. They produce flowers in great abundance, the plants appearing literally as fountains of bloom and add rare color-effects to the late perennial beds.

A., New England. Purple.

A., New England. Rose.

A., Abendroth. Rosy red flowers.

Achilleas. Do not fail to plant Achilleas. No plant is more floriferous. They increase rapidly and always insure a grand display of bloom.

Achillea Snowball. Flowers white, very double. A bed of them giving the appearance of a bank of snow.

Achillea Pearl. Flowers white and full. Similar to Snow Ball but taller.

Achillea Yarrow. Flowers white, fragrant foliage.

Achillea Roseum. Becomes a mass of rose colored flowers. Fine, feathery foliage.

PERENNIALS, Continued.

**DELPHINIUM**

- Boltonia asteroides.** Aster-like white flowers in September. 3 feet.
- Boltonia latisquama.** Aster-like lavender flowers in September. 3 feet.
- Bleeding-Heart.** A favorite in our grandmothers' gardens and still deserves a place in the most up-to-date planting.
- Baptisia.** Fine-cut, dark green foliage with deep blue flowers in May. 2 ft.
- Aquilegia.** Columbine. Very pretty and satisfactory plants for spring-flowering. Flowers occur in a variety of delicate shades.
- Daisy.** Among the best display flowers of the garden. They have large blossoms 2 to 3 inches across, produced in great profusion, and remain in flower for months. The flowers are borne on long, stiff stems and are fine for cutting.
- D., Shasta.** Perfectly hardy; in continual bloom from May to frost. Flowers large, white with yellow center and very showy.
- D., Tall** (*Chrysanthemum latifolium*). Similar to the Shasta Daisy but of taller growth.
- Coreopsis.** Large yellow flowers from May to August.
- Delphinium.** Hardy Larkspur. Some of the most satisfactory plants for the

hardy garden. Their colors are deep and intense. They will flower for months if the old flower-heads are cut off as soon as they fade. 2 to 4 ft. We have two colors:

D. Belladonna. Torquoise blue.

D. Formosom. Dark blue.

Sweet William. A well-known old favorite. Mixed colors only.

Gypsophila, Single. Minute white flowers but produced in immense numbers in large-branched panicles. Nothing is prettier for bouquets than these fine sprays of dainty blossoms. 2 ft. July to September.

Doronicum. Large orange-yellow flowers in early spring. May be potted in fall and used for winter flowering.

Funkia (Plantain Lily). Large clumps of bright green foliage which is very ornamental. Sending up tall stems bearing ten to fifteen lavender, lily-like flowers in June.

Heuchera. Small, bell-shaped rose flowers in long spikes. Fine for cutting.

Heliopsis. Orange Sunflower. Bright golden yellow flowers. Fine for planting among shrubbery; bloom all summer. 3 ft.

**COREOPSIS**

PERENNIALS, Continued.

Iberis. Hardy Candytuft. A very pretty dwarf plant with pure white flowers. Blossoms throughout May and again in fall.

Lythrum roseum superbum. Rose Loosestrife. A very attractive plant; tall and bushy, throwing up flower-spikes from 1 to 2 feet in length, bearing myriads of rosy purple flowers; in bloom from June to October. 4 ft.

Essex Pinks. These old garden favorites are admired by everyone. Their rich-colored, spicy, fragrant flowers and neat compact growth make them unequalled where a low-growing plant is desired.

SUNSHINE COLLECTION

If your garden or grounds need more brightness; this assortment of 6 varieties of yellow Perennials will work wonders. 12 plants, our selection, postpaid for \$2.

English Daisy. Dwarf plants producing an abundance of double flowers from early spring throughout the Summer. Two colors, pink or white.

Lily of the Valley. The old, well known garden flower.

Solidago. Goldenrod. Useful fall-blooming plants. Tall-growing and especial-



HIBISCUS—See page 10.



LILY OF THE VALLEY

ly desirable for producing naturalistic plantings. We can supply four varieties; single and double flowered.

Yucca filamentosa. There is probably no flowering plant for the North which is more showy than this. An immense grower, with evergreen foliage. Needs no protection. It will send up flower-stalks from 3 to 5 feet high.

Scotch Bluebell. A very satisfactory plant. Increases rapidly. Flowers profusely and continues in bloom a long time.

Pentstemon. Long spikes of small scarlet flowers from July to Aug. 3 ft.

Polemonium. Feathery foliage; deep blue flowers. July and August.

Pyrethrum, White. Tall plants with large daisy-like flowers. 3 ft. August.

P. roseum. Fine-cut foliage and rosy red flowers. 1 to 2 ft. June.

Rudbeckia, Golden Glow. Large yellow flowers from August to frost; tall.

R. purpurea. Reddish purple flowers with a brown cone in the center. 3 ft.

Pink, Mullein. Rich crimson flowers in July.

Thistle, Globe. Large, ball-shaped violet flowers.

PERENNIALS, Continued.



SPIREA FILEPANDULA

Statice latifolia. Sea Lavender. Of medium height, with spreading branches covered with small lavender flowers in such profusion as to hide the foliage. Indispensable for making bouquets.

Spirea. This fine class of hardy ornamental plants should be freely planted. They will succeed in partial shade and are beautiful in leaf and flower.

S. filipendula. Fern-like foliage and cream-colored flowers in long spikes on tall stems. June.

S. Crimson Meadow-Sweet. Elegant foliage and large heads of crimson flowers. July. 4 ft.

S. Ulmaria. Dissected foliage and large spikes of semi-double creamy white flowers.

S. Aruncus. Beautiful, double, cream-colored flowers in May.

Silphium. Large, deeply cut leaves with big yellow flowers. An odd and striking plant. August. 3 ft.

Lychnis (Cross Flower). Intense scarlet flowers in June. 1½ ft.

Astilbe. A stately plant with ornamental foliage and large heads of small white flowers shading pink. 2 ft. May.

Golden Marguerite (*Anthemis*). A pretty plant with fern-like foliage produc-

ing masses of large golden yellow flowers. In bloom all summer. 1 ft.

False or German Balm. A favorite from the old gardens. Its chief attraction being its spicy, aromatic leaves which on account of their fragrance are much used for making bouquets.

Day Lily. The flowers are large, golden yellow, lily-like and very fragrant, borne on tall stems. 2 ft. May.

WHITE PERENNIALS

Does your garden need more harmony? Then plant among them our collection of 12 White Perennials in six varieties (our selection). White is the harmonizer among colors that clash. Sent postpaid for \$2.00.

Hibiscus Moscheutos. Profuse bloomer. Rose-pink flowers with a dark red center.

H., crimson Eye. Similar to the above but having white flowers with a crimson eye.

Gaillardia. Blanket Flower. One of the showiest perennials. In flower from early summer until frost. Crimson, orange and red. Very effective when massed with Shasta Daisies.

Lily, Tiger, Double. Orange-scarlet flowers with dark spots; very bright and showy. 4 ft. August.

Lily, Tiger, Single. Similar to above but with single flowers.



TIGER LILY

PERENNIALS, Continued.

Double Buttercup. Produces pretty yellow flowers in spring and continues in bloom for a long time.

Linum. An erect-growing branchy plant with small azure-blue flowers. Blooms profusely. 1 ft.

Dusty Miller. Low-growing plant with silvery white foliage.

Platycodon. Balloon Flower. Tall-growing bushy plants blooming profusely from July to frost. Colors blue or white.

Forget-me-not. An old-time favorite. Deserves a place in every garden on account of its pretty, delicate blue flowers. Much used in cemeteries.

CREEPING PERENNIALS

For covering mounds, rockwork, etc.

Bishop's Carpet. Foliage variegated white and green.

Buttercup, Double. Yellow flowers.

Dusty Miller. White foliage.

**PLATYCODON**

Forget-me-not. Blue flowers.

Phlox, Creeping. Mossy foliage. Pink or white flowers in May.

Saxifraga. Fine foliage; pink flowers in great profusion.

Snow-in-Summer. Silver-grey foliage; flowers white.

Any Perennial listed above, strong plants
25c each, postpaid.

FRAGRANT PERENNIALS

These make an interesting corner in the hardy garden because of the delightful fragrance of their foliage.

False Balm or Sweet Mary, Spearmint, Tansy, Hyssop, Wormwood, Chives, Peppermint, Oswego Tea, Monarda.

Any Perennial listed above, strong plants
25c each, postpaid.

HALF HARDY PERENNIALS

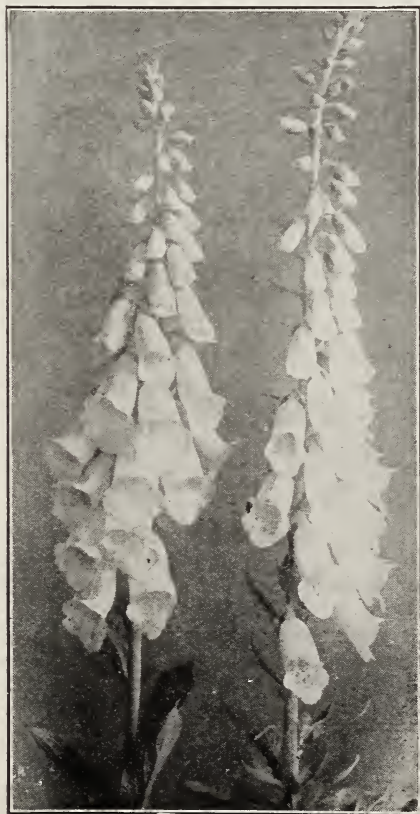
These require Winter protection or may be replanted each Spring and treated as Annuals.

Fox Glove. Purple, rose or white.

Canterbury Bells. Purple, rose or white.

Summer Lilac. Tall growing. Long spikes of lilac flowers. Fine for cutting.

Price any variety 25c each, postpaid.

**FOXGLOVE**

Selected Iris

The Iris is one of our specialties and it gives us great pleasure to be able to offer our customers the following splendid varieties. In getting together the propagating stock of our present Iris we have selected the best we could find in the collections of many growers.

The name Iris is from the Greek meaning rainbow, and it is appropriate as these flowers have gathered all the tints of earth and sky and made them their own. The charm of a bed of mixed Iris is one of the keenest pleasures of June. The graceful beauty of the flowers; running through the whole gamut of color and produced in the most riotous profusion together with their exquisite fragrance make them one of the most beloved flowers in flowerdom. The plants have a decorative value for bordering and edging as their rich, green foliage looks attractive throughout the season.



GERMAN IRIS

TALL IRIS

- Pallida Delmatica—Deep lavender.
- Lohenghrin—Mauve.
- Mad. Chereau—S. White frilled blue; F. White.
- Flavesens—Cream.
- Neglecta—S. Pearl, F. purple.
- Florentina—White tinted lavender.
- Native—Beautiful in foliage and flower.
- Forget-me-not blue.

MEDIUM

- DeWitte—S, blue, F. purple.
- Loretus—White veined violet.
- Darius—S. yellow, F. wine.
- Honraribilis—S. yellow, F. bronze.
- Mad. Pacquette—Rich, rosy, purple.
- Her Majesty—Rosy pink.
- Blue Sky—S. light blue, F. purple.
- Nelly—White, veined and clouded blue.
- Mars—S. yellow, F. yellow veined blue.
- Lcerly—S. yellow, F. wine.
- Traudlieb—S. white, F. purplish pink.
- Sunset—S. old gold, F. purplish plum.
- Lady Frances—Light lavender.
- Rhien Nixe—S. white, F. wine.
- Plicata—S. lavender, F. white veined violet.
- Sampson—S. gold, F. bronze.
- Mrs. Darwin—White veined violet.
- Celesta—Light blue.
- Purple Queen—Rich purple.
- Black Hills Blue—Light blue.
- Sherwin Wright—Intense yellow.
- Mad. De Bonne—Lemon yellow.

DWARF

- Blue—S. wine, F. purple.
- White—Cream.
- Cyanea—Purple.
- Ensata—Fine foliage, light blue.

SIBERINA IRIS

Beautiful, vigorous and hardy. We offer three colors. Intense Blue; White; Yellow.

Any variety, strong plants, 25c each, postpaid. Large clumps, 50c each, postpaid. Mixed Iris, our selection, \$2.00 for 10, postpaid.

DO YOU ADMIRE BLUE

God must have loved the blue color because He made the sky blue and He made so much of it. The same holds true of the floral kingdom. The blues are strongly represented. If you love blue flowers send for our collection of 12 blue Perennials in six varieties (our selection). Price \$2.00 postpaid.

Five Hardy, Time-Tested **G R A P E S**

Do not fail to set out a dozen plants and secure an abundance of the most luscious, healthful of all fruits.

Everybody who has a garden has room for a few Grape vines. They can be planted along a fence, tied to a post or trained along a trellis.

Excellent for table use, jelly, etc.

Concord Black

Worden Black

Agawam Red

Niagara White

Clinton Black

PRICE—Any of the above varieties, straight or assorted. Large, heavy-rooted vines. No. 1 size, 35c each; \$4.00 per dozen.

No. 2 size, 25c each; \$2.75 per dozen.

Prices are Postpaid.

LUTIE—The best flavored red table grape for the North. Large and sweet. Large vines only; 45c each, postpaid.

For description of varieties see our Nursery catalogue, sent free on request.

The Northwood Nurseries

Koethe Bros., Props.

COON VALLEY

WISCONSIN

The Royal Time Table
C R A P E S

London
Printed and Sold by
J. G. & J. S. B. 1785

London
Printed and Sold by
J. G. & J. S. B. 1785

London
Printed and Sold by
J. G. & J. S. B. 1785

The Royal Time Table
Printed and Sold by
J. G. & J. S. B. 1785

Hardy Phlox

These are without doubt the favorite late summer and autumn flowers, and are unequalled for producing a grand display of color. Planted among the shrubbery they give a dash of color when most shrubs are out of bloom. Grouped among the perennials or massed into the background of the lawn they furnish an abundance of bright flowers and add a wondrous touch of beauty to the late summer and early autumn.



Pearl. Tall; late. Well-formed trusses of pure white flowers.

Pantheon. Bright crimson; midseason; medium height.

Athis. Tall; salmon-red; late.

Eugene Danzanvilliers. Tall; early; lilac.

Bridesmaid. White with red eye, suffused with red; medium height; early.

Landseer. Reddish salmon; medium. Midseason.

Sea Foam. Dwarf; early; large trusses of pure white.

Albion. White with red eye.

Coquelicot. Dwarf; coral-red with darker center.

Baron Van Dedem. Dwarf; blood-red.

G. A. Strohle. Large trusses; bright scarlet maroon eye.

Braga. Dwarf; white center, with pink edging.

Widar. White center, with blue edge.

Amelia. Deep red center, shading to a beautiful pink.

La Vague. Rose-pink.

De Iris. Deep violet.

Peachblow. Dwarf; bright pink.

Le Mahdi. Bluish violet.

Rijnstroom. Clear rose-pink.

Edmond Rostand. Reddish violet, white star in the center.



BRIDESMAID PHLOX

Hardy Phlox

Miss Lingard. The earliest of all. White with slight pink shading; medium height.

Pluton. Deep wine-red; medium height.

Richard Wallace. Pure white, maroon eye; medium height.

Luster. Rose-pink with darker eye; dwarf.

Eclairer. Rosy carmine with light halo; medium height.

Embrazement. Orange-scarlet with crimson-eye; medium height.

James Garland. White, with crimson eye and blending; tall.

Comte von Hochberg. Rich crimson-purple; medium height.

Maculata. Tall; good for hedging; free-flowering; lake-red.

Rosewine. Rosy wine shade.

Magenta. Medium height; magenta flowers.

Daybreak. Very dwarf; white with colored eye.

Jewel Pink. Delightful shade of pink, with darker center.

Any variety listed, 25c each, postpaid.

Mixed Phlox, our selection, \$2 per doz., postpaid.

Peonies

When the gentle winds of spring waken the wild flowers in the woodland and the Robins and Bluebirds are back in their old haunts; the stately Peonies begin to stir beneath the mold. They never disappoint and like the Robins are sure to greet you in the Spring.



Peonies are unquestionably some of the best hardy bedding and border plants. Increasing in size and beauty as the years go by, rivaling the rose in beauty and perfection of bloom, they should find a place on every lawn. Their culture is very simple. The soil should be rich and the roots not planted too deeply; the crown 2 inches beneath the surface is sufficient. But the soil must be right. They will never do their best on sandy soils without a liberal mixture of clay.

RED

Felix Crouse. Deep crimson; very double.

Rubra Triumphans. Bright, rich crimson. With a satiny finish.

Rubra Superba. Large flowers of glistening ruby-red.

Jupiter. Bright crimson shaded rose; very full and double.

PRICE LIST ^OF ^FFRUIT TREES ^AND ^DEVERGREENS

Prices in this list are for trees at the nursery or packed and delivered at the Railroad station at Coon Valley Transportation charges not prepaid.

APPLES AND CRABS

EARLY APPLES

Yellow Transparent
Duchess
Tetofsky

AUTUMN APPLES

Wealthy
Gideon

WINTER APPLES

North Western Greening
Thiel Greening
Canada Baldwin
Peter
Golden Russett
Salome
Fameuse or Snow
Green Sweet

CRABS

Hyslop
Transcendent
Florence
Briar Sweet
Whitney
Red Siberian
Minnesota

Price—Any of the above Apples and Crabs, 5 to 7 ft; 50c each.

SPECIAL

THE NAMELESS APPLE—A Winter apple of exceptional merit. This variety is our own introduction and combines many good qualities. Tree as hardy as the Duchess. Apple large and long stemmed. Flesh rich and delightfully flavored. Quality very good. Color red and russet.

Price—5 to 7 foot trees, \$1.00 each.

PLUM TREES

SURPRISE, large red. **TERRY**, large, red shaded yellow.

FOREST GARDEN, large very productive. **CHERRY PLUM**

HANSEN HYBRID PLUMS, of medium size. Start bearing in the nursery row. **SAPA**, purple. **HANSKA**, red.

Price—Any of the above Plums 5 to 6 foot trees 75c each.

CHENEY, early, large, red. **DE SOTO**, late, medium, yellow.

Price—5 foot trees, 40c each.

SOUR CHERRY

EARLY RICHMOND and **LARGE MONTGOMERY**

Price—4 foot trees, \$1.00 each.

EVERGREENS

WHITE PINE, 3 foot trees, \$1.50 each.

WHITE PINE, 2 to 3 foot trees, \$1.00 each.

SCOTCH PINE, 2 to 3 foot trees, \$1.00 each.

JACK PINE, 3 to 4 foot trees, 75 cents each.

ENGLISHMEN'S SPRUCE, foliage blue green, 2 foot trees, \$1.00 each, 3 foot trees, \$2.00 each.

NORWAY SPRUCE, 2 foot trees, 50 cents each; 3 foot trees, 75 cents each; 4 foot trees, \$1.00 each.

AMERICAN ARBOR VITAE, 2 to 3 foot trees, 50 cents each; specimen, 2 to 3 foot trees, \$1.00 each.

For prices on other varieties and sizes of Evergreens see our catalogue.

The NORTHWOOD NURSERIES

The Home of The Flowers

KOETHE BROS., Proprietors

COON VALLEY

WISCONSIN



PEONIES, Continued.

Francois Ortegat. Purplish crimson; very large and fine.

La Sublime. Deep rich crimson; late.

WHITE

Festiva Maxima. Early; fine for cutting. Considered the very best white.

Bride. Outside petals lilac-white; center milk-white.

Fragrantissima. Large, fragrant white flowers.

Ivory. Delicate ivory-white flowers.

PINK

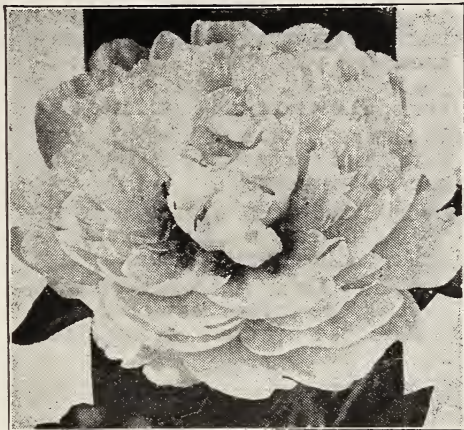
Fragrans. Violet-rose; very fragrant.

Dorchester. Late; large shell-pink flowers.

L'Esperance. Vivid rose; free flowering and fragrant.

Louis Van Houtte. Deep rosy carmine, petals tipped white.

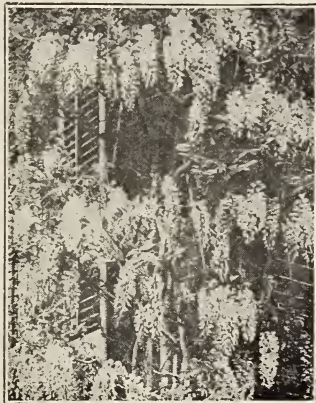
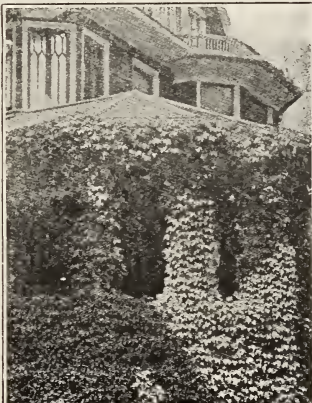
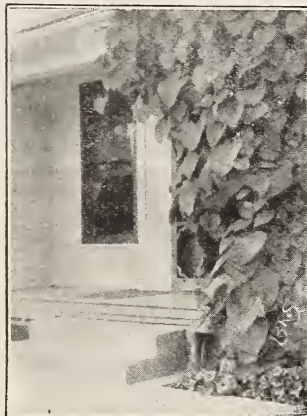
Princess Mathilde. Soft pink.



Price: Strong plants, 50c each; larger plants, 75c each; extra large plants, \$1.00 each, postpaid.

Hardy Ornamental Climbers

The proper use of climbing vines will add much to the picturesque in all home plantings. They are unsurpassed for shading porches, for breaking the straight lines and angles of corners on buildings, and for covering fences and screening out unsightly objects, thus adding festoons of gracefulness to otherwise harsh outlines.

**WISTARIA****IVY****DUTCHMAN'S PIPE**

American Ivy. The best of the Ivies. Clings by means of tendrils to stone and brick walls.

Ampelopsis Engelmanni. A strong, vigorous, long-lived vine with fine five-parted foliage. One of the best for covering walls, trees, etc.

Akebia quinata. The daintiest of all climbers; very handsome. Has peculiar, five-parted foliage.

Bittersweet. A rapid-growing, woody vine, with yellow-husked berries, which split and show the red contents.

Clematis Virginiana. Virgin's Bower. A native vine of great beauty, with masses of white flowers; very graceful.

Clematis paniculata. This is undoubtedly the most satisfactory ornamental climber for northern planting, combining, as it does, rapid growth, delightful

VINES, Continued.

fragrance and hardiness. It is bound to give satisfaction. Flowers pure white and produced in great abundance. One-year vines, 25c each; 2-year, 50c each, postpaid. 4-year vines, \$1.00 each at the nursery.

Wild Grape. A native vine of great hardiness; thrives well in the most exposed situations.

Clinton Grape—Useful as well as ornamental; may be trained in any desired position; prolific bearer.

Dutchman's Pipe. Vigorous vine with large, heart-shaped leaves and odd pipe-shaped flowers. Strong vines, 50c postpaid.

Flowering Grape. Vigorous grower, forming dense shade.

Honeysuckle, Scarlet. The hardiest and handsomest of the Honeysuckles; robust grower, with charming scarlet flowers.

Honeysuckle, Yellow. Similar to the scarlet but with yellow flowers.

Purple Wistaria. A rapid-growing vine, with large trusses of purple pea-shaped flowers.

Price of any of the above Hardy Vines, 25c each, postpaid.



CLEMATIS PANICULATA

Pansy Plants

The Pansies were the floral treasures of our Grandmothers gardens and today still rank unsurpassed as bedding plants. Up to date methods of culture and selection have vastly improved the size and color range until the modern Pansy stands as a masterpiece of the gardener's art. Be sure to order early as we are sold out of Pansy plants every season.



Price: Choice mixture of colors, 60c per dozen, postpaid.

Annual Flowering and Vegetable Plants

Of these we annually grow a large supply. List of varieties and prices free on request.



GRUSS AN TEPLITZ

Beautiful Roses

The Rose is Queen of flowers, and she has a fascination that is all her own. Think of the pleasure of growing Roses for yourself, of having a bed, or at least a few, of these beautiful flowers on your grounds where they can greet you with their sweetness and fragrance whenever you pass their way, and where you can enjoy their beautiful satiny flowers the whole summer long.

Owing to our rigorous climate our list of Roses is a small one but it is very select. We have tested over 50 varieties but list only those that have stood the test. The ones we use in our own plantings. We specialize in Roses and you will not go wrong in being guided by our experience. To do their best Roses must have clay at the roots. On sandy and deep, black soils; clay should be added to the planting earth.

Gruss An Teplitz. Always in bloom. One of the richest colored Roses in cultivation. Opening dark red, quickly changing to rich, velvety crimson. If you are not acquainted with Gruss An Teplitz Rose, you have missed one of the rare joys of the floral world. To see them in bloom is to become their friend; a lasting friendship that deepens with the years. With joyous anticipation we watch the first buds unfold in June. With sad regret we see them swept by November's drifting snow and bitter cold still laden with bud and blossom.

J. B. Clark. No description can do justice to the beauty of this rose when in full flower. They open in such masses as to hide the foliage. When the heavy bloom is over they keep on with scattering flowers all season. Color is a deep scarlet shaded dark crimson.

Captain Christy. Large very double flowers of bright satiny, flesh pink shading deeper at the center. Blooms only in June.

Frau Karl Druschki. (A gem among Roses.) A magnificent variety, with large, double, white Roses, pure as the snow, borne on long stems. We can

heartily recommend this variety as one of the few that is altogether beautiful and it is considered the best white Rose for outdoor culture. A splendid companion for the Gruss An Teplitz.

General Jacqueminot. Brilliant crimson; very fresh and pretty, and a mass of flowers when at its best.

Any of the above varieties, except as otherwise noted, strong plants, 75c each, postpaid.



GENERAL JACQUEMINOT

ROSES, Continued.

BABY RAMBLER ROSES

This is something out of the ordinary in Roses. Flowers in clusters like Crimson Rambler but grow in bush form and flower from June till snow flies. They are of spreading growth, become about 18 inches tall and produce such a wealth of blossoms that we class them among the most desirable Roses for the North.

Baby Rambler, Red. Flowers deep red, resembling those of the Crimson Rambler.

Baby Rambler, Pink. Clear soft rose-pink.

Baby Rambler, White. Pure white flowers.

Collection. One of each of the above Baby Rambler Roses, Red, Pink, and white, for \$2.00.

Price: Either color, strong bushes, 75c each, postpaid.

RUGOSA ROSES

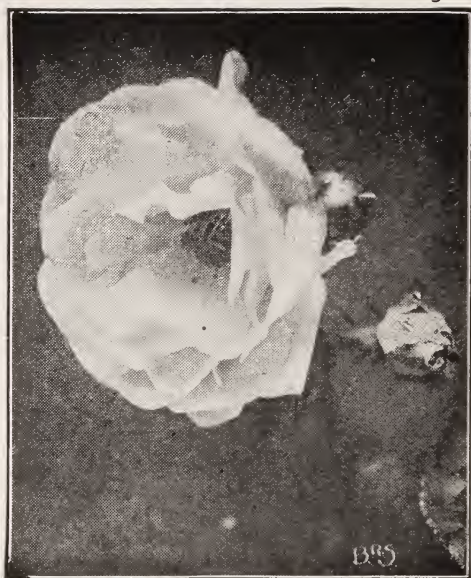
A very hardy variety from Japan, with large, leathery, wrinkled foliage and large single flowers followed by Rose apples nearly an inch in diameter. They retain their handsome foliage until late in December. Very useful for hedging and setting off shrub borders. We have these Roses in two colors, Red and white.

Price of Rugosa Roses, 50c each, postpaid.

We offer also the following Hybrid Rugosa Roses. We have not had the oppor-



FRAU KARL DRUSCHKI



NEW CENTURY

tunity to test these thoroughly but consider them promising varieties:

Sir Thomas Lipton. Strong grower. Double white, fragrant flowers.

New Century. Very free bloomer. Flowers in clusters; bright, silvery pink.

Price of Hybrid Rugosas, strong bushes, 75c each, postpaid.

Hugonis. A rare new Rose. A native of China and an ornament in any planting. Grows to a height of 6 feet and over, with fine cut, very ornamental foliage. The flowers are single, light yellow and produced in great profusion. Proven hardy to the tips with us and is one of the earliest roses to bloom. Price strong plants, \$1.50 each, postpaid.

Moss Roses. We offer possibly the two best varieties. **Mousselain, white;** **Princess Adelaid, pink.** Price either variety, 75c each, postpaid.

CLIMBING ROSES

American Pillar. A strong vigorous grower. Flowers deep pink with a white center, borne in large bunches.

Crimson Rambler. Very rapid grower becoming a mass of double flowers. Every home needs one or more.

Dorothy Perkins. Rapid grower, with double, shell-pink flowers.

Price: 75c each, postpaid. **Collection:** one of each of the above climbing Roses for \$2.00, postpaid.

Blooming Roses That Can Be Transplanted Any Time

We grow the choicest varieties of Roses in wire baskets that can be safely taken up with basket and soil and transplanted during the growing season. Price of blooming Roses \$1.00 each at the nursery. Blooming Roses not on sale before July 20th.

Summer-Flowering Bulbs and Roots

CANNA

The Canna is considered the king of bedding plants. Their tall rapid growth, luxuriant massive foliage, varying from richest green to coppery bronze, and their flaming gladioli-like flowers make the ideal plant where a tropical effect is desired.

We offer the following colors.

Red. Bronze foliage.

Red. Green foliage.

Pink. Green foliage.

Yellow. Green foliage.

Price, any color, dormant roots, 20c each, \$1.50 per dozen, postpaid.

TEXAS TUBEROSES

Large, white, exquisitely perfumed flowers. Must be cellared in fall. 10c each, postpaid.



DAHLIAS

You will want them for cut flowers. Who does not enjoy the beautiful, artistic flowering Dahlias, with their perfect form and attractively arranged petals? Each opening flower a graceful and perfect work of art; from the great workshop of nature. Then the charm of a mixed planting of these lovely flowers.

What joyful anticipation to watch the new wonders of the different varieties unfold from day to day. They have much to recommend them; ease of culture, long blooming season, freedom from insects and disease and their great flower producing qualities. We have them in four colors: Red, Pink, Yellow and White. Also specify whether Cactus, Show or Decorative type is wanted. Dahlia roots, any color or type, 30c each, postpaid.

ASTER PLANTS

We have a large stock of Annual Aster Plants in the choicest varieties; grown in open beds and far more vigorous than forced seedlings. Price: Red, Purple, White or Mixed, 16c per doz; 2 doz., for 25c; \$1.00 per 100, postpaid.



Choice Gladioli

These are among our foremost Summer Flowering Bulbs. They are of easy culture and their color range is one of the most immense in the floral kingdom. They are excellent for cut flowers, being long stemmed, keeping well in water and in that the unopened buds develop in the vase. Here as well as in our other departments distinctiveness has been our watchword. The following are the choicest varieties of many sorts tested on our grounds. If you want distinctive Gladioli you will find the following list very satisfactory.

Best Violet. Deep lake red. The most distinctive color of all.

Faust. Dark wine red.

Columbia. Pink.

Jesse. Vermilion scarlet.

Orion. Peach yellow and pink.

Victory. Yellow striped pink.

White Excelsior. Pure white sprayed pink.

Ida Van. Vivid orange scarlet.

Golden King. Deep yellow red blotch.

Niagara. Light yellow.

Rouge Torch. Creamy white marked flame red. A beauty.

Frances King. Salmon red.

B. J. Huelot. Deep purple.

Arizona. Rose pink marked deep pink.

Mrs. Watts. American beauty red.

Mrs. W. E. Fryer. Orange red, solid color.

Panama. The peerless pink.

America. Light pink.

War. Deep dark red.

Golden West. Orange scarlet marked golden yellow.



Lily Lehman. Almost pure white, resembles a lily.

Price any of the above Gladioli, 15c each; \$1.25 per dozen, postpaid.

Choice Mixture of Gladioli, 50c per doz., postpaid.

FRUIT DEPARTMENT

GRAPES

Grapes ought to be largely planted. There is scarcely a garden in the land where there is not room for a few more Grape-vines. No fruit so abundantly rewards the planter.

Concord. The old reliable favorite; succeeds everywhere.

Worden. As hardy as the Concord and better in quality. A large, early and desirable black Grape.

Agawam. The long keeping red Grape. Bunch and berry large.

Lutie. Large; red; good quality; hardy and an early bearer. 45c each.

Niagara. The best white Grape. Berries as large as Concord and fully as hardy in vine; quality the best.

Clinton. Black. Needs no winter-protection. Fine for arbors, etc. Very productive.

Price, any variety, excepting Lutie, 35c each, postpaid.



AGAWAM GRAPE



AROMA

CURRENTS

- Wilder.** Large and handsome; very productive; light red.
 - Pomona.** Large bunches; bright red; one of the best for market.
 - White Grape.** One of the best white sorts; excellent quality and productive.
 - Red Cross.** Possibly the largest red. Quality good.
 - Cherry.** An old favorite. Hardy and productive.
- Price, 20c each, \$2.00 per doz., postpaid.

GOOSEBERRIES

- Houghton.** Sweet and tender; of medium size; prolific bearer.
 - Downing.** Pale green; large size and of best quality.
 - Pearl.** Large berries. Prolific bearer.
- Price: 25c each, postpaid.

RASPBERRIES

RED.

- Cuthbert.** Berries large, fine; cardinal. The best shipper.
- Louden.** Red; very hardy; good for home or market.
- Marlboro.** Red; very productive.

BLACK

Plum Farmer and Older.

PURPLE.

- Columbian.** The best purple variety.
- St. Regis Everbearing Raspberry

BLACKBERRIES

- Snyder.** Very hardy and prolific.
- Briton.** Good late variety.
- Eldorado.** Berries large, fine and sweet.

Price of Raspberry and Blackberry plants, any variety; 10c each, \$1.00 per dozen; \$6.50 per 100, postpaid.

STRAWBERRY PLANTS

It is such an easy matter to have an abundance of this health-giving fruit that every home in the land should have its bed of Strawberries. One hundred plants set 4 feet apart and 18 inches in the row; if given good cultivation in the Summer, and the blossoms pinched out so they will run, should furnish an abundant supply.

Senator Dunlap. Perfect flowering. Still in the lead as a commercial berry and for home planting. Strong, thrifty, and productive. Fruit large and firm.

Aroma. Perfect flowering. Large, conical, quality good; season late.

Dr. Burrill. A perfect-flowering new variety of great promise. Similar in habit to Senator Dunlap. A good plant-maker, with healthy foliage. Quality of berry good. Very productive.

Pocomoke. Very productive; fruit large and of good quality.

Any of the preceding varieties, 25 for 40c; \$1.25 per 100, postpaid.

FALL OR EVERBEARING

Progressive. Perfect flowering.

Superb. Perfect flowering.

Price, either variety, 50c for 25, postpaid.

NO GARDEN QUITE COMPLETE WITHOUT THE FOLLOWING:

Asparagus Roots. 25c per doz., \$2.00 per 100, postpaid.

Rhubarb Roots. 3 for 35c, postpaid.

IF INTERESTED IN EXTRA LARGE APPLE TREES, WRITE FOR LIST OF VARIETIES AND PRICES.



HEDGES

Hedges have always appealed to the lover of beauty and are desirable as a boundary planting. Material suitable for deciduous hedges:

- | | |
|---------------------|--------------|
| Thunberg's Barberry | Mock Orange |
| Spirea Van Houttei | Gray Dogwood |
| Polish Privet | Hazel Nut |

- Honeysuckle Morrowi Phlox Maculata
 Siberian Hedgewood Phlox Athis
 Price any of the above shrubs, 12 to 18 inches, 30c each. Phlox, strong clumps, 25c each, postpaid.
 American Arbor Vitae is the ideal plant for Evergreen Hedges. Price 12 to 18 inch plants, 25c each, postpaid.

Evergreens

No home is complete without a liberal planting of Evergreens. This is especially true of farm homes and suburban residences where planting space is ample. As specimens on the lawn nothing can take the place of Evergreens, they brighten the winter landscape and add comfort and cheer when the cold storms of winter play carols among their branches. For grouping arrange the different varieties so as to produce pleasing contrasts of permanent color.

Norway Spruce. The best all-around evergreen. The ideal tree for wind-breaks. Its close compact growth forms an almost impenetrable barrier to the frigid storms of winter. Norway Spruce deserves to be largely planted on all farms around orchards, barn and cattle-yards, poultry-houses and grounds, and wherever protection from cold and storms is needed. At the same time, Norway Spruce is one of our choicest evergreens for ornamental planting. Price, 18 to 24 inch trees, 50c each, postpaid.

Engelmann's Spruce. A fine evergreen of very dense, regular and symmetrical growth. The foliage is of a pronounc-

ed bluish-green making it valuable for planting with other evergreens for contrast. 2-ft. trees, \$1.00 each, postpaid.

Colorado Blue Spruce. A splendid tree of dense growth and perfect form, with bluish foliage, making it a striking object on any lawn. 2 foot trees, \$1.00 each, postpaid.

Douglas Fir. A very pretty evergreen with glaucous-green foliage. Grows very compact and bushy. Transplants easily. One of the best for ornamental planting. 12-inch specimens, 50c each, postpaid.

White Pine. Lends itself to every purpose and is one of the most beautiful native evergreens. Foliage long and graceful, of a light green color. Fine for lawn specimens or group planting. 2-foot trees, \$1.00 each, postpaid.

Jack Pine. A very fast grower, of a rich green color, forming a very dense tree and beautiful enough to grace the most stately or imposing grounds. 1½ to 2 feet trees, 50c each.

Scotch Pine. A wide-spreading tree with long, dark green leaves or needles, rapid in growth. Fine for specimens on large grounds or for grouping with white pine or Jack Pine. 18 to 24 inch specimens, 50c each, postpaid.

American Arborvitae. The best evergreen for hedges. Looks attractive from the moment it is planted. The foliage is feathery and becomes more dense after every shearing. A good hedge will do much to break the cold winter storms and protect the house from drifting snow. 12 to 18 inch plants, price 25c each at the nursery or postpaid.

We have specimen Arbor Vitae up to 8 feet.



Large Sized Evergreens for planting where an immediate effect is desired. We have a large supply of large, specimen Evergreens for sale at the nursery. Prices quoted on request.

NUT TREES

Every home should be well supplied with Nut Trees. They are fast growing, ornamental, furnish a grateful shade;

productive, supplying a healthful food; and the hard, close grained wood is valuable and much sought after. A nut plantation is best started with small trees.

Japanese Walnut, Butternut, American Sweet Chestnut, 2 foot trees, 50c each, postpaid. Black Walnut, 2 foot trees, 25c each, postpaid. One tree of each, 4 trees in all, for \$1.50, postpaid.

Deciduous Ornamental Trees



WHITE OAK

Japanese Walnut. A beautiful, fast growing, leafy tree, with light colored bark, bearing great clusters of edible nuts. Do not miss it. Price 6 to 8 ft. trees, \$2.00 each.

Mountain Ash. Covered with great clusters of red berries from July until winter.

White Birch. Fine for specimens and for contrasting with other trees.

Bitter Hickory. A tall-growing native tree of elm-like shape. Very handsome and effective as single specimens.

Linden, American. Splendid shade tree, of rapid growth; very leafy, with a wealth of sweet-scented blossoms in May.

Horse-chestnut (White-flowering). An attractive tree; symmetrical in shape. Flowers in May.

Ash, American. A large, leafy shade tree. Plant where a deep shade is wanted.

Oak, White. One of our most picturesque lawn and park trees.

Cherry, American Black. Should be largely planted. Beautiful in form;

sweet-scented flowers in May. Highly prized for its clear-grained yellow wood.

Box Elder. One of the first to leaf out in spring. Foliage light green. Plant where a quick shade is wanted.

Laurel-leaf Willow. Medium-size, upright tree with shining, glossy leaves that have the appearance of being varnished. Rapid grower.

Golden Willow. No planting complete without at least one Golden Willow. Beautiful at all seasons, especially in winter when their golden bark contrasts prettily with the snow.

American Elm. Tall, leafy tree of vase-like shape. The most admired of all American trees. One of the best for lawn and street planting.

Black Walnut. Very valuable for its timber and its rich, oily nuts.

Butternut. A large, handsome tree, valued for its profitable nuts.

Price: 6 to 8 ft. trees, by freight or express, not prepaid, \$1.50 each.



LAUREL LEAFED WILLOWS



NATIVE FLOWERING CRABS

Flowers very Beautiful and Fragrant

Bechtel's Double Flowering Crab.
 Native Pink Flowering Crab.
 Red Flowering Wild Crab.
 Prairie Crab—Light pink.

Price, any of the above Crabs, 4 ft. trees, 75c each

MEDIUM SIZED FLOWERING TREES

HAWTHORN—A medium sized tree with small, double, white flowers.
 Grows very compact.

JUNEBERRY—Handsome small tree; graceful in form with snowy white flowers in April and edible fruits in June.

CHOKE CHERRY—A medium-sized tree with clouds of creamy white flowers in spring followed with clusters of maroon-colored fruit.

Price of any of the above—2 foot trees, 30c each, postpaid; 4 to 6 foot trees, 50c each, not prepaid.

LARGE SHADE TREES

American White Elm
 White Birch

Cut-leaf Maple
 Black Walnut

Mountain Ash

Norway Maple

Laurel-Leaf Willow

American Chestnut

Golden Weeping Willow

American Linden

Bitter Hickory

European Larch

Butternut

Hard Maple

Apple Trees

Catalpa Speciosa

Black Cherry

Price—Any variety listed above 10 to 12 feet, \$2.75 each at the nursery.
 12 to 14 feet, \$4.00 each at the nursery.

“Say It With Flowers”

During the growing season we have many cut flowers on sale at right prices. Call and see them.