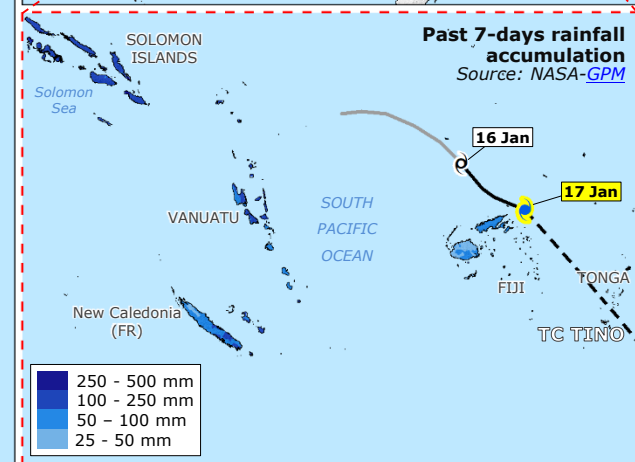
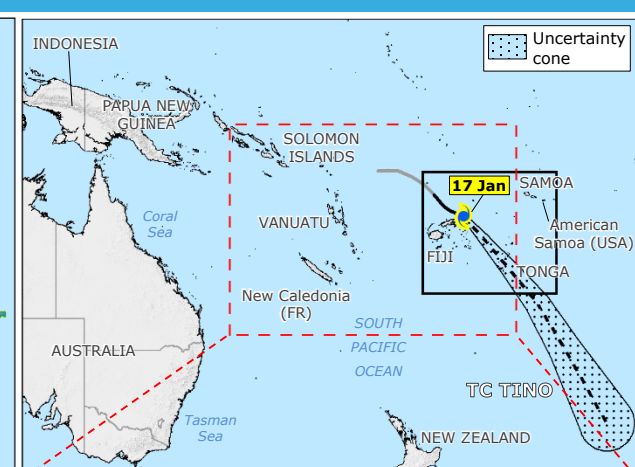
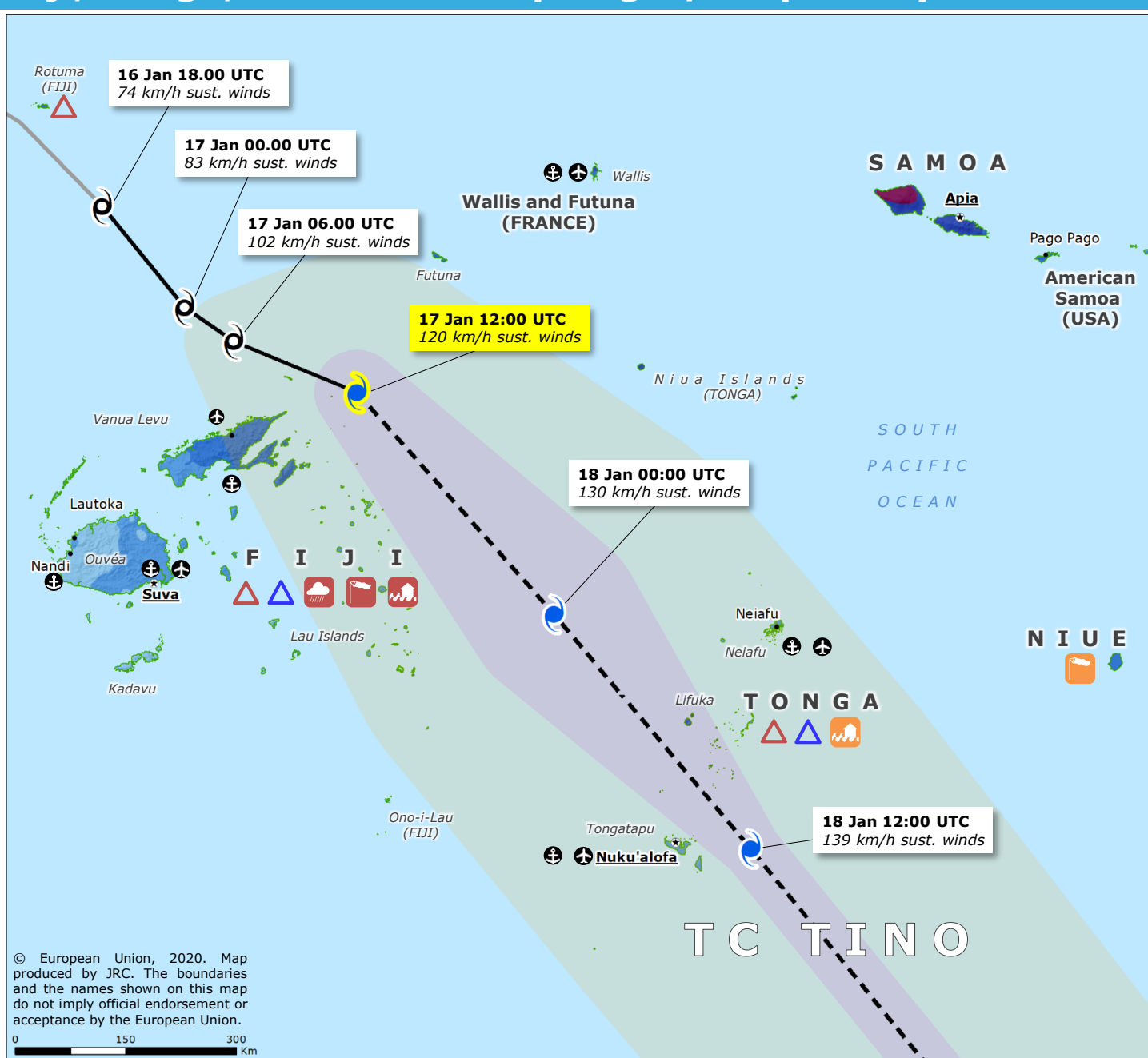


# Fiji, Tonga, Samoan Archipelago | Tropical Cyclone TINO



**TROPICAL CYCLONE (TC)**  
Source: GDACS, JTWC

- Current position
- Forecast track
- Past track
- Tropical disturbance (15-16 Jan)

**INTENSITY**

- > 118 km/h
- 63-118 km/h

**WIND BUFFER**

- > 118 km/h
- 93-118 km/h

**STORM SURGE**  
Source: JRC, ECMWF

- Storm surge < 1 m

**3-DAYS RAINFALL FORECAST (mm)**  
Source: ECMWF

- 25-50
- 50-100
- 100-250
- 250-500
- > 500

**COMMUNITY ADVISORY**  
As of 17 January  
Source: Government of Tonga, MET-Fiji

- ▲ Tropical cyclone warning
- ▲ Storm warning
- ▲ Strong winds warning
- ▲ Strong winds alert
- ▲ Flash flood warning
- ▲ Flash flood alert
- ▲ Heavy rain warning

✈ Airport, 🚤 Port

© European Union, 2020. Map produced by JRC. The boundaries and the names shown on this map do not imply official endorsement or acceptance by the European Union.

0 150 300 Km