

## **Historic, Archive Document**

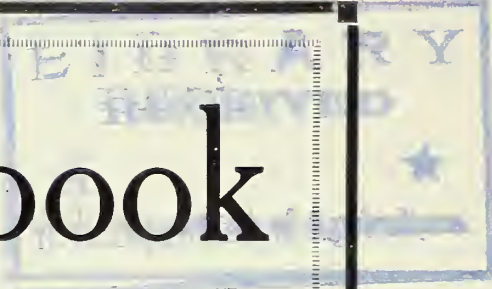
Do not assume content reflects current scientific knowledge, policies, or practices.



2.09 RETURN TO POMOLOGY  
SECTION OF NOMENCLATURE.

1916

MAR 2 1916



# Gill's Handbook

OF

# ROSES



ESTABLISHED OVER HALF A CENTURY  
200 ACRES UNDER CULTIVATION

Everything for the Garden, Orchard and Conservatory

ISSUED BY

## The E. Gill Nursery Company

WEST BERKELEY OAKLAND EDEN VALE, CAL.

ADDRESS ALL COMMUNICATIONS TO WEST BERKELEY, CAL.



## NOTICE

---

**How to reach our Nurseries:** Our principal Nursery and General Office is located on San Pablo Avenue about one mile north of University Avenue, West Berkeley, Cal. The Richmond cars pass the grounds every few minutes. Phone Berkeley 5880.

**Our Conservatories** are located on Twenty-eighth Street, corner of Filbert Street, three blocks west of San Pablo Avenue, Oakland, and the San Pablo Avenue cars passing every five minutes reach them very easily.

**Our Seed and Floral Department** is located on the corner of Twenty-first and Telegraph Avenue, Oakland. Phone Oakland 5265.

**Our Fruit Tree Nurseries** are at Eden Vale, Cal., on the Monterey Road, about five miles south of San Jose, Cal.

**A cordial invitation** is extended to every one to visit all our various departments at any time.

**Ornamental Trees and Plants.**—Our stock is full and complete in Shade and Ornamental Trees and Plants and Flowering Shrubbery; also a very large assortment of Sidewalk Trees and Palms.

**Fruit Trees and Small Fruits.**—We are devoting much space in our nurseries to the culture of Fruit Trees and Small Fruits. Orchardists or parties intending to plant on an extensive scale should write us for special prices.

**House Plants.**—We invite inspection of our stock. We have a very large assortment of Hardy House Palms, Ferns, and other desirable plants.

**Seeds and Bulbs.**—This department is one of the best equipped on the coast. We are thoroughly up to date and carry an immense line of Flower, Vegetable, and Grass Seeds. Our store is worth a visit to any one interested in fine cut flowers, the latest floral designs, fancy baskets, or a complete assortment of florists' supplies.

**Terms of Sale.**—The terms herein quoted are Cash.

In ordering, please give full and explicit directions as to the route and manner in which goods are to be forwarded, as our responsibility ends on delivering at Railway Station or Express Office.

Purchasers should state by what mode of conveyance they wish to have their goods shipped. When no route is designated, we use our own judgment.

Remittances may be made by check or draft on San Francisco, Oakland or Berkeley, or by registered letter or money order on Oakland or Berkeley, Cal.

The E. Gill Nursery Company gives no warranty, express or implied, as to the description, quality, or productiveness, or any other matter, of any Seeds, Trees, Bulbs, or Plants they send out, and will not be in any way responsible for the crop. If the purchaser does not accept the goods on these terms, they are at once to be returned.

Address everything to

**THE E. GILL NURSERY CO.,**

West Berkeley, California.



# NOTICE THIS PAGE IS A SUPPLEMENT TO PAGES 3 and 4 OF NEW AND RARE ROSES

- Antoine Revoire.**—Rosy flesh on a yellow ground, shaded with a border of carmine; large, full; a splendid variety.
- Arthur Goodwin.**—The color is coppery orange-red, passing to salmon-pink as the flowers expand. A superb combination of color; flowers medium to large and full.
- Alex Hill Gray.**—Deep lemon yellow which intensifies as the blooms develop, large, great substance, perfect formation, superb in every respect.
- Beryl.**—Deep golden yellow, small, highly perfumed.
- Cardinal.**—Rich cardinal-red; large full, and very free.
- Cli Lady Ashtown.**—Deep rose, shading to silvery-pink, with touches of yellow at base of the petals; large full and free.
- Colonel Leclerc.**—Cherry red washed with carmine lake; full and globular, upright growth.
- Colonel R. S. Williamson.**—Color satiny-white with deep blush center; blooms large, well formed, with high pointed center and carried on stiff stems.
- Corallina.**—Deep rose, very pretty, bud highly perfumed, a good bloomer.
- Carine.**—Orange-carmine, blush buff, creamy-fawn, and coppery-salmon—all colors that attract and delight, and vary in tone and intensity as the bloom develops.
- Countess of Gosford.**—Salmon pink suffused with saffron yellow, large and full.
- Countess Annesley.**—Rosy salmon, delicately and deliciously perfumed; large perfect form. Fine.
- Chateau de Clos Vougeot.**—Velvety scarlet, shaded fiery-red, changing to dark velvety crimson.
- Dorothy Page Roberts.**—Coppery pink suffused with apricot yellow, petals large and massive.
- Duchess of Wellington.**—Intense saffron-yellow, stained with rich crimson, which as the flower develops becomes coppery-yellow. The blooms are fairly full and of a delightful fragrance. A great acquisition to our garden roses. 75c.
- Duchess of Westminster.**—Dainty clear rose-madder, very large, full, high-pointed center, beautifully smooth and massive petals.
- Edward Mawley.**—Velvety crimson, large, full petals of wonderful depth and substance. Very free-flowering.
- Ferniehurst.**—Suffused pure rosy coppery-pink on fawn-blooms large, full perfect finish, foliage distinct and handsome. Very delicately perfumed.
- Franz Deegan.**—Pale yellow, center golden yellow, medium size, fragrant.
- George C. Waud.**—Orange vermilion, distinct and beautiful, large perfect finish, floriferous, strong tea perfume, one of our best.
- Grace Molyneux.**—Creamy-apricot with flesh center, large, fine form, floriferous, delicately tea perfumed, a grand variety.
- General Superior Arnold Janssen.**—Deep glowing carmine, carried erect on stiff robust stems.
- Harry Kirk.**—Deep sulphur yellow passing to a lighter shade at edge of petals, large, full, and perfect form.
- Honorable Ina Bingham.**—Purest pink deeply veinated; semi-double, petals very large.
- His Majesty.**—Deep dark crimson, shaded deep vermilion-crimson towards the edges. 75c.
- Irish Elegance.**—Bronze orange scarlet which whilst expanding assumes varied apricot hues. A charming single variety.
- Irish Fireflame.**—In the spiral bud state it is deep maddery orange, splashed with crimson, which as the bud develops becomes fiery orange-crimson, changing to solid delicate orange which becomes as the flower fully opens. (Single). \$1.00.
- Jacques Vincent.**—Coral red with a distant yellowish shade, flowers large and perfectly formed.
- Jean Note.**—Chrome yellow changing to creamy yellow; large and full.
- Jonkeer J. L. Mock.**—This grand rose is the strongest growing in the Hybrid Tea class. Color clear imperial-pink, a glorious flower.
- Joseph Hill.**—Pink, salmon shaded, outside of petals pinkish copper, large and full.
- Juliet.**—The flowers are large and double with a delicious and strong perfume. The color is a fresh orange pink, shading into dark pink, when the bud opens; the reverse of the petals is old gold. It has attracted much attention at all the recent shows. At the Temple Show in London it received the gold medal and at the Holland Rose Show a first-class certificate. At both shows and others on the continent it created quite a sensation. 75c.
- King George.**—Rich blackish crimson, with deep velvety violet flush. Large, very full, opening freely.

## NEW AND RARE ROSES

Price strong plants except where noted 50c each.

**Climbing Souvenir du President Carnot.** We are offering this season for the first time, this fine new climber. It is identical in every way with the well-known President Carnot; from which it is a sport, having originated on our grounds at Eden Vale. **Strong plants \$1.50 each.**

**Beaute de Lyon.**—Coral red, slightly shaded with yellow; large, full, globular.

**British Queen.**—Pure white, except in the bud stage it shows a slight flush, which disappears as the bloom opens; large and fine form, very floriferous and sweetly scented. **\$1.00.**

**Gustave Regis.**—Canary yellow with orange center, very beautiful bud.

**George Arends.**—(Pink Druschki) Delicate rose, large, full, deliciously scented, very floriferous.

**George Dickson.**—Velvety black scarlet crimson with brilliant scarlet reflexed tips, with heavy and uniquely pure crimson maroon veining on the reverse. The blooms are very large and its huge leathery shell-shaped petals have wonderful lasting qualities, and are symmetrically arranged. **\$1.00.**

**Hoosier Beauty.**—In color, glowing crimson-scarlet, with darker shadings. The buds are of good length and open into magnificent bloom, quite dazzling in velvety brilliance. **\$1.00.**

**Ivory.**—A pure white sport of Golden Gate; forces well.

**Lady Downe.**—A splendid bedding rose with large, handsome flowers on stout stems. For a rose the color is quite peculiar, being a beautiful shade of buff; when fully opened the center is deep yellow.

**Lady Alice Stanley.**—The color on outside of petals is a deep coral-rose, inside delicate flesh, often flushed and suffused with bright pink. Remarkably attractive. **\$1.00.**

**La Tosca.**—Silvery pink with deep center; large, full, floriferous.

**Lady Battersea.**—Beautiful cherry crimson, moderate size, very free flowering.

**Lady Pirrie.**—Deep coppery reddish-salmon, inside of petals apricot yellow, flushed fawn and copper; an ideal variety for massing; very lovely.

**Laurent Carle.**—Brilliant, velvety carmine, very large, perfect form, and very sweet.

**Le Progress.**—Nankeen yellow, large cupped form, very distinct.

**Lyon.**—Shrimp pink at ends of petals, center coral red or salmon, shaded with chrome yellow, making a beautiful combination; very fragrant.

**Lady Greenall.**—Intense saffron-orange, heavily zoned and overspread on deep creamy-white; reflex of petals faintly suffused delicate shell-pink. **75c.**

**Lady Hillingdon.**—Deep apricot-yellow, long pointed buds; very free flowering very fine.

**Madame Edward Herriot.**—Buds coral-red, shaded with yellow at the base, the open flowers of medium size, semi-double, are of a superb coral-red, shaded with yellow and bright rosy-scarlet, passing to shrimp-red. **\$1.50.**

**Mrs. Herbert Stevens.**—Color white, with a distinct fawn and peach shading toward the center; a sterling novelty of distinct Tea fragrance unsurpassed.

**Margaret Molyneaux.**—Varying from saffron-yellow shaded apricot and peach in the bud stage to canary-yellow as the semi-double blooms expand.

**Madame Constant Soupert.**—Deep yellow, shaded peach; large, full, well-formed; very fine.

**Madame Jules Gravereaux.**—Deep yellow center; rosy peach outside.

**Madame Leon Pain.**—Silvery salmon center orange yellow, large full well-formed, fine flowering.

**Madame Melanie Soupert.**—Salmon yellow, suffused with carmine, large and full. **75c.**

**Madame Ravary.**—Beautiful orange yellow; medium, nearly full, very sweet.

**Melody.**—The blooms are of a good size; the color is an intense pure deep saffron-yellow with primrose edges, a delightful color harmony.

**Mildred Grant.**—Silvery white, edge of petals shaded and bordered with pink, enormous size and substance.

**Miss Alice Rothschild.**—Rich, deep citron yellow, which intensifies as the bloom expands; large, full and of perfect form; free and continuous in bloom; deliciously fragrant; superb in every respect.

- Mrs. Myles Kennedy.**—Delicate silver white, shaded buff, deeper pink in center, large, full, perfect finish; superb.
- Miss Cynthia Forde.**—Deep brilliant rose pink, shading on the back of the petals to light rosy pink; large and full.
- Mrs. Aaron Ward.**—Indian yellow, occasionally washed with salmon rose, large, full and floriferous.
- Mrs. A. R. Waddell.**—Rosy scarlet bud opening to reddish salmon, reverse of petals bright scarlet.
- Mrs. Peter Blair.**—Lemon chrome, with golden-yellow center; medium size, lovely shape; deliciously perfumed.
- Mrs. Chas. Curtiss Harrison.**—Color deep crimson-pink on front of petals, crayed deep crimson-carmine on the reverse side, a warm color that lights up well when held in varied positions of light; very highly perfumed.
- Mrs. David Jardine.**—Bright rosy pink, shading in center petals to salmon pink.
- Mrs. David McKee.**—Creamy-yellow, large, very floriferous; one of the very finest.
- Mrs. Edward Mawley.**—Bright carmine shaded salmon, very large and sweet.
- Mrs. W. E. Lippiatt.**—Bright velvety red, large and full, very sweet.
- Marquis De Sinety.**—Color golden yellow, shading to bronzy-red; large, full, very fine.
- Marquis de Querhoent.**—Beautiful China rose; copper-salmon and golden yellow.
- Orleans.**—Deep cerise pink, produced in large clusters.
- Ophelia.**—Salmon-flesh, shaded with rose; large and perfect shape; of excellent habit, the flowers standing up well on long, stiff stems and produced in great profusion. \$1.00.
- Peace.**—Pale lemon yellow, large, full and very floriferous.
- Prince De Bulgarie.**—Silvery flesh, very delicately shaded with salmon, long bud opening to full cup-formed flowers.
- Pharisaer.**—Rosy white shaded with salmon, large, full and well formed.
- Prince E. C. De Arenberg.**—Color is a clear and lively red without tones of purple that spoils all the other red forcers.
- Rena Robbins.**—Comes a bright yellow changing to a pure white, with golden yellow heart.
- Rayon d'Or.**—Yellow cadmium toning to sunflower yellow; large, full globular form; bronze green glossy foliage, mildew proof. Superb. \$1.00.
- Reine Marie d'Italia.**—Coppery-orange in the open bud, golden-orange when partly developed, pinkish fawn of lovely shade when fully open, when it looks like a full fluffy-silk rosette. Color effect of the whole flower is Indian-yellow.
- Radiance.**—A brilliant rosy-carmine, displaying beautiful and rich opaline-pink tints in the open flower. The form is fine, largest size and full, with cupped petals. It blooms constantly and is delightfully fragrant. This is a superb rose.
- Robert Duncan.**—Bright rose-lake; very floriferous; fragrant.
- Sir Robert Stout.**—Dazzling velvety red, very striking.
- Souvenir of Stella Gray.**—Deep orange with splashes or veinations of yellow, apricot, salmon and crimson. Medium size.
- Sunburst.**—Various shades of orange, copper and yellow; very large flower and long stem.
- Theresa.**—Deep orange apricot, passing to madder-pink, with carmine splashes. As the flower expands, it becomes ecru veined flesh-pink, passing to silvery-pink; semi-double, very floriferous; delicately perfumed.
- Venice.**—Bright vivid scarlet; fine buds.
- Viscount Carlow.**—Warm carmine-pink, stained on deep cream, the stiff shell-shaped petals being distinctly edged with carmine; medium size, very freely produced.
- Warrior.**—Buds blood red, opening flowers vivid scarlet crimson, semi-double.
- Walter Speed.**—Deep lemon yellow fading to white; flowers large and full, borne on long erect stems; good bloomers.
- William Shean.**—Purest pink petals shell-shaped, four to five inches long; flowers of immense size and substance and of perfect form; free blooming and distinct.
- W. E. Lippiatt.**—Brilliant velvety crimson, shaded maroon; very strongly perfumed, large, full.
- Willowmere.**—Color rich shrimp-pink, shaded yellow in the center, and toning to carmine-pink towards the edges of the petals; long carmined coral bud, carried on long, stout flower stalks. \$1.00.



---

## THE ROSE

### OUR LEADING SPECIALTY.

We have made the growing of Roses our specialty for many years, and we believe we have the largest and most complete collection on the Pacific Coast. During the past season we had added all the new varieties of merit introduced in this country or abroad and have dropped from our list some of the old and inferior varieties; retaining only those that we consider the best.

Parties not familiar with the particular varieties will do well to leave their selection with us and it will be our aim to only send them varieties that will do well in their locality.

Roses will grow in almost any location on this coast. Select, if possible, a somewhat sheltered situation not too close to large trees, whose dense foliage and extending roots absorb all the life-sustaining nutrition of the soil; also bear in mind that everything in the rose department likes the sunshine.

If your soil is poor, it may be made fertile by an addition of loam or well-rotted stable manure. Spade the ground to a depth of about twelve inches and thoroughly mix it, and if there is sufficient moisture any one can have beautiful roses.

When the plants are received, if for any reason it is desired to defer immediate planting, place the plants in a cellar, set them upright and water freely from time to time. Cover the roots with a damp sack. If they have a withered appearance, caused by an unusual delay in transit, soak them in water (tops and roots) for an hour or two hours before planting, to restore their vitality.

The best time to plant is during the winter and spring. Having prepared the ground do not hesitate to place the roots well below the surface of the soil, arranging them as nearly as possible in their natural position. Cover over, pressing firmly down upon them and in and around the stem. After planting, water freely, and if the sun is strong, protect them for a few days with a covering of burlap. Water freely every day until they show signs of having become established. Of course, if the ground is wet this is to be omitted.

**Pruning.**—The different varieties of roses differ very much in habit of growth. Many are neat and compact, requiring little or no attention, while others of the same class are vigorous and straggling, sending out long shoots which tend to out-run the limits assigned them. Pruning, therefore, is a matter to be governed by the judgment of the planter. We will add, however, that plants of persistent growth should be trimmed back in the early winter about one-half of the season's growth. When plants, apparently healthy, fail to mature the buds which they bear, remove a large percentage of the undeveloped buds and prune back about one-third of the growth; this gives the roots a chance to become vigorous.

We offer nothing but tested kinds of both the new and old varieties, and our stock for this season is stronger than anything ever before offered.

Parties wishing to have rose blossoms named will find us ready at any time to render assistance. Flowers cut for this purpose should have a portion of the foliage with them. This helps greatly in identifying obscure varieties.

We were awarded the first prize at the P. P. I. E. Flower Show held in May, for the largest and best collection of roses. Also awarded the Gold Medal for the best bed of roses in the Exposition grounds.

## STANDARD OR TREE ROSES

Price—\$1.00 each; \$12.00 per dozen; extra size, \$1.25 each; \$15.00 dozen.

We devote much time and space to the cultivation of Standard Roses and the stock we offer this season is large and complete. The roses are budded on prepared stocks, that will not sucker, and are from 3½ to 4 feet in height. The stems are clean and straight, heavily rooted, and the crowns well shaped and thrifty.

Send for list of varieties.

## GENERAL LIST OF PLANTS

We are growing a very large and complete stock of Palms, Fruit, Shade and Ornamental Trees. Send us a list of what you are in need and we will gladly quote lowest prices on the same.

## GENERAL LIST OF ROSES

Price strong 2-year-old plants, \$3.00 per dozen; \$20.00 per 100; extra large plants \$5.00 per dozen; \$35.00 per 100.

Abbreviations used: H. P., Hybrid Perpetual; H. T., Hybrid Tea; T. Tea; B., Briar; \*, Climber; P., Polyantha.

**Admiral Dewey (H. T.)**—A very strong grower; semi-double flowers of the Testout type; white, faintly tinged with pink.

**Adrienne Duvivier (H. P.)**—Dark, velvety-crimson maroon; a bold and striking flower, produced on heavy stems, very full and fragrant.

**Alfred Colomb (H. P.)**—Carmine crimson, fine, perfect form; foliage large and handsome; very sweet; a splendid variety.

**Aline Sisley (T.)**—A rare shade of violet red, brightened with crimson maroon; it makes large and elegant pointed buds and is an excellent bloomer.

**Agrippina (C.)**—Beautiful, fiery red, good size and form; very double, a profuse bloomer and a valuable rose.

**Alice Graham (H. T.)**—Ivory white, tinted salmon, variable both in form and color, floriferous.

**Amy Robsart (Briar)**—A deep rose color; very vigorous and a splendid bloomer; one of the best of this class.

**Anna Oliver (T.)**—Apricot yellow, very full and sweet; flowers tinged with pink; an excellent bloomer.

**Augustine Guinoisseau (H. T.)**—(White La France). This beautiful variety with white flowers, shaded in center to light rose, is a great favorite on account of its freedom of bloom, fragrance and large flowers.

**Avoca (H. T.)**—Crimson scarlet, buds very long and pointed, flowers large and sweetly perfumed. One of the best of its color.

**American Beauty (H. T.)**—The most popular flowering rose in cultivation, too well known to need description; color deep crimson; exquisitely fragrant, and of strong growth.

**Black Prince.**—Deep blackish crimson; large, full and globular; very free flowering.

\***Baltimore Belle**—Pale blush, changing to white; very vigorous.

\***Banksia (White.)**—Thornless; small, sweet flowers in bunches; very rampant grower.

\***Banksia (Yellow.)**—Same as the preceding flower; bright yellow; good bloomer.

**Bardou Job (H. P.)**—A very vigorous, upright-growing, hardy rose; the flowers are semi-double, of the richest velvety crimson, with bright golden anthered center.

**Baron De Bonstetten (H. P.)**—Splendid large flowers, very full and double; color a rich dark red, passing to a velvety maroon.

**Baroness Rothschild (H. P.)**—Light pink, cupped; form very symmetrical; without fragrance, but very distinct.

**Beaute Inconstant (T.)**—Beautiful orange red, changing to red and carmine; long pointed buds and a very showy flower.

\***Beauty of Glazenwood (also known as the San Rafael Rose)**—Flowers bright coppery yellow, borne in large clusters; a free grower and splendid bloomer in the springtime.

**Belle Siebrecht (H. T.)**—Imperial pink, large, beautifully formed; a most prolific bloomer, the finest rose of its color; sweetly perfumed.

**Ben Cant (H. P.)**—Deep, clear crimson, very distinct and good.

**Bessie Brown (H. T.)**—Creamy-white flowers of immense size and substance; free bloomer and sweetly scented.

**Betty (H. T.)**—Coppery rose, overspread with golden yellow; large fairly full, fine form, buds very long, deliciously perfumed.

**Blanche Moreau (M.)**—Pure white, perfect form, well mossed.

**Brenda (Briar.)**—A delicate shade of flesh, changing to peach.

**Bridesmaid (T.)**—A clear delicate pink, with large, handsome pointed buds on long, stiff stems.

**Baby Rambler (P.) (Madame N. Levasseur.)**—Rosy crimson, marvelously free flowering and a splendid rose of dwarf habit.

**Coquette Des Alps.**—A profuse bloomer; flowers pure white, sometimes shaded with blush.

- Captain Christy (H. P.)**—Of delicate flesh color and rosy center; flowers extra large, double, full and sweetly scented.
- Captain Hayward (H. P.)**—Color deep glowing crimson, very bright and rich.
- Caroline Testout (T.)**—The petals are large and exquisitely edged and bordered with clear silver rose. Both flowers and buds are extra large and of very elegant form; the color is brilliant satiny rose, deepening at center to clear red. (The official rose of Portland, Oregon).
- Catherine Mermet (T.)**—A bright rosy flesh color; perfect; abundant flowers; large and full; extra good.
- Comtesse Riza Du Parc (T.)**—A good variety, color bright coppery rose, tinged and shaded with soft velvet crimson.
- \*Cant's Blush.**—A very strong climber, flowers beautiful blush pink, changing to creamy white.
- Cecile Brunner (P.)**—The most popular of the Polyantha Roses. A charming, fairy-like variety of sweet, delicate fragrance; color salmon pink with light salmon center; too well known to need further description.
- Chas. J. Graham (H. T.)**—Dazzling orange crimson, large, splendid form, very deliciously perfumed.
- \*Chestnut Hybrid.**—Cherry-carmine; large and full flowers.
- \*Cli. Meteor.**—A grand climber; color velvety maroon; very free bloomer.
- \*Cli. Papa Gontier.**—One of the best of the red climbers; flowers beautiful, long and pointed; color a beautiful shape of deep rose; a very free bloomer.
- \*Cli. Belle Siebrecht.**—Imperial pink, large and beautifully formed; a most prolific bloomer and the finest rose of its color.
- \*Cli. Captain Christy.**—A climbing type of this well-known variety.
- \*Cli. Caroline Testout.**—This is probably the most popular of all the climbing pink roses. The flower is identical with the parent and it is of the most rampant growth and free blooming quality.
- \*Cli. Devoniensis.**—Large, creamy white, shell-like petals of great substance. Large, full and very fragrant.
- \*Cli. Wooten.**—A fine red climber, flowers deep, rich red; borne in great profusion on long, clean stems; a very free bloomer; flowers of good substance.
- \*Cli. K. A. Victoria.**—One of the best of the white climbers; flowers identical with K. A. Victoria, which we consider sufficient endorsement.
- \*Cli. Cecile Brunner.**—The flower of this variety is identical with the well-known Buttonhole Rose. It is a very strong grower and a free bloomer and it should have a place in every garden.
- \*Cli. La France.**—A sport from La France, and identical with it in every particular, save its climbing habit of growth.
- \*Cli. Bridesmaid.**—Like Bridesmaid, but climbing habit; clear pink.
- \*Cli. Liberty (H. T.)**—Bright crimson, a good grower and a splendid bloomer.
- \*Cli. Perle Des Jardins.**—Habit of growth is vigorous, young plants often sending up shoots six to eight feet in one season, with rich, glossy foliage, and bright red stems. The flowers are produced in profusion, and are deep canary yellow.
- \*Cli. Malmaison**—Identical with the older variety; an extra strong climber.
- \*Cli. White Maman Cochet (T.)**—The most beautiful of the new climbing white roses. Identical with White Maman Cochet. A very strong grower and a free bloomer.
- Clio (H. P.)**—A strong, vigorous grower; handsome foliage, flowers flesh color, shaded in the center with rosy pink.
- \*Cloth of Gold.**—Deep yellow center, with sulphur-colored edges. A good climber.
- Clothilde Soupert (P.)**—Strong grower, wonderful bloomer; color ivory white, shading toward the center with silver rose.
- \*Caroline Goodrich (Climbing General Jacqueminot.)**—Those desiring a good dark climber will be pleased with this variety. It is a strong grower and free bloomer. Color dark, velvety red.
- Conrad F. Meyer (R.)**—Clear, silvery rose, fragrant and well formed, good.
- Countess of Derby (H. T.)**—Center salmon, outer petals rose, large, very floriferous, sweetly perfumed, superb.
- Coupe de Hebe.**—Beautifully shaded in light pink; one of the most exquisite and fragrant roses in cultivation.
- Crested Moss (M.)**—Deep pink color; buds surrounded with a mossy fringe and crest; free from mildew; a fragrant and beautiful rose.
- Crimson Bedder**—Crimson flowers; very free and produced in clusters.

- \***Crimson Rambler (Polyantha.)**—Of remarkable vigorous growth, making shoots from eight to ten feet high in one season. Flowers of brightest crimson and produced in great pyramidal panicles, each having thirty to forty blooms.
- Coquette De Lyon (T.)**—Splendid form; flowers large and of an exquisite canary color.
- \***Cherokee (Double.)**—White; rampant climber; very sweet scented.
- \***Cherokee (Single.)**—One of the finest pillar roses in cultivation; large, clear white, single flowers, full of bright yellow stamens in center, which give it a most unique appearance; foliage dark, rich green; a most vigorous grower.
- \***Cherokee (Single) Pink.**—One of the most beautiful of the Cherokees; color deep shrimp; good bloomer.
- \***Cherokee (Single) Crimson**—Similar to the older sorts, but of a rich crimson color; very strong grower.
- Dinsmore (T.)**—Beautiful crimson scarlet; profuse bloomer.
- Dean Hole (H. T.)**—Silvery carmine, shaded salmon, large, full, fine form.
- \***Dorothy Dennison (W.)**—Resembles Dorothy Perkins except that it is a shell pink; flowers are produced in great profusion. A most striking and beautiful variety.
- \***Dorothy Perkins.**—Soft light pink; flowering profuse in large clusters; very fragrant and lasting.
- Doctor Grill (T.)**—Beautiful coppery yellow, shading to old rose; an excellent bloomer.
- Doctor Tanner (H. P.)**—Crimson scarlet; large, full, very fragrant; excellent.
- Duchess De Brabant (T.)**—One of the most popular roses; beautiful silvery pink, delicate and graceful; a free bloomer and deliciously fragrant.
- Devonieses (T.)**—Magnolia rose; beautiful cream white; with rosy center; magnolia fragrance.
- Duchess of Albany (H. T.)**—Bright rosy pink, very full, double and fragrant.
- Duke of Edinburgh (H. P.)**—Dark velvety maroon; long, pointed bud; very full and sweet; one of the finest of its class.
- Duke of Teck (H. P.)**—Bright crimson scarlet, large, full and fine; flowers very distinct.
- Eugene Guinoisseau (M.)**—Cherry red; very pretty.
- Emperor De Moroc (H. P.)**—Deep velvety maroon; medium size; very distinct and beautiful; no collection is complete without it.
- Elizabeth Barnes (H. T.)**—Satiny salmon rose with a faun center suffused with yellow outside of petals deep rosy red shaded with copper and yellow.
- Earl of Warwick (H. T.)**—Soft salmon pink shaded vermillion, large and full.
- \***Empress of China.**—Bright pink; in large clusters.
- England's Glory (H. T.)**—Flesh with satiny pink center; large and full.
- Etoile De Lyon (T.)**—A vigorous grower; foliage of reddish purple; flowers large; color a rich yellow.
- Etoile De France (H. T.)**—Velvety crimson, large and full; a most beautiful sort.
- Earl of Dufferin (H. P.)**—Rich velvety crimson, shaded with dark maroon; very large, full and fine form.
- Empress of India (H. P.)**—Dark brownish crimson; very double, finely shaped flower; distinct from any other rose.
- Fisher Holmes (H. P.)**—An improved General Jacqueminot; flowers fuller and more freely produced.
- Flora McIvor (B.)**—White, flushed with rose; a splendid bloomer and one of the finest single white roses.
- Florence Pemberton (H. T.)**—Creamy white suffused pink, large, full, perfect in form with very high pointed center.
- Frau Karl Druschki (H. P.)**—This grand white rose has become renowned as the very best snow white rose ever introduced; it is an extraordinarily strong grower, and has the vigor and hardiness of an oak.
- \***Francois Crousse (H. T.)**—A beautiful new French rose of much merit; bush of strong growth, producing throughout the season a wealth of large, deep cherry red flowers.
- Francisca Kruger (T.)**—Coppery yellow, shaded with peach; large and full; sweet.
- Geant Des Battles (H. P.)**—Brilliant crimson; medium size; very fragrant; an old and well-known sort.
- Golden Gate (T.)**—Rich creamy-white, frequently tinted with soft rose.
- Gen. McArthur (H. T.)**—Bright crimson, large, full, free flowering, highly perfumed; one of the best.

- General Jacqueminot (H. P.)**—Rich, dazzling scarlet, shaded with velvety crimson; superb, glowing color; very large, free bloomer; a vigorous grower.
- \*Glorie De Dijon.**—A magnificent old rose, one of the very finest in every respect; large, perfectly double, and Tea scented; color rich creamy yellow shaded with lovely amber.
- Glorie of Moses (M.)**—A beautiful blush; very large and full; grows very robust; one of the best.
- Gloirie De Bourg La Reine (H. P.)**—Vivid red, a very striking color; flowers large and double; a good bloomer.
- Glorie De Chedane Guinoisseau (H. P.)**—Bright vermillion red, very large, very full and perfectly formed, petals large, round and smooth.
- Glorie De Rosamond (Ragged Robin.)**—Bright scarlet, very profuse bloomers; much used for hedges, stands trimming well.
- \*Gloire De Margotten.**—The brightest rose grown; deep, rich scarlet, which does not fade as the flowers get old; an excellent bloomer, good grower, and without doubt the coming red climber.
- Glorie Lyonnaise (H. T.)**—A beautiful Hybrid Tea; color creamy white, slightly shaded on top of petals; growth very free; upright stems; a very desirable rose.
- Grace Darling (T.)**—Porcelain rose; elegantly shaded with vinous crimson; medium size; handsome flowers, very sweet.
- Gruss An Teplitz (H. T.)**—Bright scarlet, shading to rich velvety crimson; very fragrant and a most profuse bloomer. The young growth is of a bronzy plum color. A queen among Bedding roses.
- \*Gainsborough (H. T.)**—Delicately tinted flesh, almost white; lustrous as satin.
- Helen Gould (H. T.)**—This is a grand rose of the very highest merit for the garden; bright watermelon-red; very free grower and bloomer.
- Her Majesty (H. T.)**—Delicate pink, very large and beautiful; one of the most striking roses ever introduced.
- Hugh Dickson (H. P.)**—Brilliant crimson shaded with scarlet, good size, fine form, free flowering; very fragrant.
- Hermosa**—An excellent rose blooms in fine clusters; large, very double and fragrant; color beautiful clear rose; a constant bloomer.
- Heinrich Schultheis (H. P.)**—Splendid large flowers; very double and sweet; color delicate pinkish rose, wax-like substance; very beautiful.
- \*Hiawatha.**—In color it is brilliant, ruby-carmine, with a clear white eye and a mass of golden stamens.
- Isabella Sprunt (T.)**—Sulphur yellow, a sport from Safrano, which variety it greatly resembles in all save the color of the flower; very beautiful in bud.
- \*James Sprunt**—Rich, dark crimson; free bloomer; strong grower.
- Jubilee (H. P.)**—A pure crimson, with shading of maroon; a grand rose from every point of view.
- J. B. Clark (H. T.)**—Deep scarlet, shaded blackish crimson, large flower.
- John Hopper (H. P.)**—Bright rose, reverse of petals pale lilac; large, double; free bloomer.
- Kaiserin Augusta Victoria (H. T.)**—By far the finest of the new white roses; flower borne on long, heavy stems, of the finest ivory white; long, pointed buds; a good grower and a fine bloomer; much used for forcing under glass.
- Killarney (H. T.)**—Flesh shaded white, suffused with pale pink, large, very long and pointed; very distinct.
- La France (H. T.)**—Color satin pink, outer petals pale flesh; has the free blooming qualities of the Tea Rose.
- La France of '89 (H. T.)**—Bright red, tinged with carmine.
- Lady Ashtown (H. T.)**—Very pale Rose du Barri, shading to yellow at base of petals, large, full and pointed.
- Lady Gay (W.)**—Cherry pink, fading to soft white; very floriferous.
- Lady Penzance (B.)**—Beautiful soft tint of copper.
- Lord Penzance (B.)**—Soft shade of fawn or ecru.
- Lady Roberts (T.)**—Rich apricot, base of petals coppery red, edge of petals shaded orange; charming.
- Lady Ursula (H. T.)**—Flesh pink, flowers large and full, of great substance and form, deliciously perfumed.
- \*La Marque**—Almost pure white; beautiful buds; large, full flowers; very sweet; too well known to need further comment.
- Liberty (H. T.)**—We consider this the best of all Red Hybrid Teas. Color and fragrance as good as General Jacqueminot, which it much resembles. Blooms as freely as any of the Tea Roses. As a hothouse variety it is unsurpassed.

- Louis Van Houtte (H. P.)**—Crimson maroon; medium size, sometimes large; fine clear foliage; very free flowering and fragrant; an excellent sort.
- Lucy Ashton (B.)**—White blooms with pink edges.
- La Sylphide (T.)**—A creamy white shaded with rose; an extra good bloomer.
- Mabel Morrison (H. P.)**—Pure white petals, thick and waxy; a Hybrid of Baroness Rothschild; habit good.
- Mrs. Cleveland (H. P.)**—A grand new scarlet variety; beautiful pointed buds, magnificent when open; the finest red sort we have to offer.
- Mrs. John Le Conte**—Color a magnificent shade of amber-yellow, deepening toward the center to orange or coppery yellow, delicately clouded with pale crimson.
- Mrs. W. F. Sandford (H. T.)**—Beautiful blush pink, shading to white.
- Mrs. John McLaren (H. P.)**—A sport from the well-known rose Magna Charta, with all the good habits of the same, but the flowers are of a lovely pink.
- Mrs. Benjamin R. Cant (T.)**—Color deep rose; inner petals soft silvery-rose suffused with buff at the base; exceedingly free flowering.
- Mrs. John Laing (H. P.)**—An Hybrid Perpetual rose, one of the finest of its class; color clear bright pink, exquisitely shaded; the buds are long and pointed, and the flowers extra large and full, borne on long stems, and exceedingly sweet. It must be classed as a superb rose.
- Mrs. R. G. Sharman Crawford (H. P.)**—Deep rosy pink; outer petals pale flush; base of petals white; large and of perfect form.
- Madame Joseph Schwartz (T.)**—Flowers are pure white, tinged and shaded with pale yellow and rosy blush; very full and sweet.
- \*Madame Wagram.**—Satiny rose, shaded flesh pink; very large.
- Madame Plantier (H. P.)**—Extremely hardy; vigorous grower; completely hides itself in June with its lovely pure white, sweet scented flowers.
- Madame Welche (T.)**—An erect and vigorous habit; flowers very large and double; color soft apricot yellow with dark orange center; sometimes shaded with coppery red; fragrant.
- Madame Abel Chatenay (H. T.)**—Good grower; fine in bud and flower; large and full; petals recurved and of a beautiful creamy-rose, tinged with salmon. A wonderfully bright and pretty rose. Splendid for forcing.
- \*Madame Alfred Carriere.**—A beautiful waxy white flower, large and full; one of the best.
- Madame Annie Wood (H. P.)**—Beautiful crimson scarlet; profuse bloomer.
- Madame Chedane Guinoisseau**—A valuable and exceedingly beautiful variety; flowers clear golden yellow, buds long and pointed, opens well.
- Madame Falcot (T.)**—Fine apricot yellow, with beautiful orange buds.
- Madame Gabriel Luizet (H. P.)**—Light silvery pink, shading of the edges of petals with white; very free bloomer; a grand flower and very distinct.
- Madame Hoste (T.)**—Very valuable and exceedingly beautiful; extra large flowers and superb buds, very full and delightfully perfumed; color soft canary yellow, deepening at center to pure golden yellow, beautifully flushed with pale amber; edges and reverse of petals rich creamy white.
- Madame Jean Dupuy (T.)**—Golden yellow center rosy yellow, edges of petals bordered with rose, large, full and sweet.
- Madame Lambard (T.)**—A fine variety; color bright rosy crimson, occasionally pale light rose; very sweet and beautiful.
- Madame Segond Weber (H. T.)**—Light rosy salmon, long pointed buds, makes a magnificent showy flower.
- Meteor (H. T.)**—Dark velvety-crimson, shaded maroon.
- Morning Glow (T.)**—Bright, rosy carmine richly suffused with orange.
- Merveille De Lyon (H. P.)**—White center, slightly rose-peach; a grand, full, cup-shaped flower of large size, hardy and free.
- McCartney Rose (B.)**—Single white, fine foliage.
- Magna Charta (H. P.)**—Bright rose, very large and double, of good form and fragrance, extra.
- Maharajah (S.)**—Deep velvety crimson, very large and floriferous.
- Maman Cochet (T.)**—One of the finest of the pink roses; color beautiful silvery pink, changing to deep rose; flowers large and full and deliciously sweet; one of the best roses we offer.
- Marchioness of Londonderry (H. P.)**—Color ivory white; petals of great substance very highly colored.
- \*Marechal Niel.**—One of the largest and most beautiful roses grown; flowers extra large; very double and deliciously perfumed; deep golden yellow; buds of immense size.

- Margaret Dickson (H. P.)**—This rose is almost pure white in color, strong in growth and quite free flowering; one of the finest Hybrid Perpetuals introduced in recent years.
- Marie Van Houtte (T.)**—White, slightly tinted yellow petals, often edged with rose; flower quite full and well formed; a good rose both in bud and open.
- Marquise Litta (H. T.)**—Carmine rose, large, full and cupped.
- Medea (T.)**—Lemon yellow, with canary yellow center; large size; very full, deliciously perfumed.
- Meg Merriles (B.)**—Gorgeous crimson; very free flowering; one of the best.
- Miss Kate Moulton (H. T.)**—Light pink, very beautiful; habit robust, with heavy foliage, making a grand rose for outdoor culture.
- Molly Sharman-Crawford (T.)**—Delicate white, which becomes purer as the flower expands, large, full and perfectly formed.
- My Maryland (H. T.)**—Bright salmon pink, with pale edges, very fragrant.
- Marshall P. Wilder (H. P.)**—Bright cherry carmine; very fragrant, fine, clear foliage; one of the most satisfactory of this class.
- Niphetos (T.)**—Of dwarf habit, producing in the greatest profusion large, elongated buds of snowy white; flowering continually in winter as well as in summer; a magnificent variety.
- \*Ophire**—Reddish copper; medium size; fine cupped form; full and sweet; desirable.
- Princess Adelaide (M.)**—Fine, strong grower; flower bright rosy pink.
- \*Princess Stephanie.**—Nasturtium-yellow, suffused with coppery red, large and full.
- Papa Gontier (T.)**—A splendid variety, valuable for open and greenhouse culture; it is a strong, vigorous grower and free bloomer; the buds are extra large, finely formed and very beautiful; flowers double and full and exceedingly sweet; color bright cherry red, passing to rich, glowing crimson; petals shaded with yellow, very striking and handsome.
- Paul Neyron (H. P.)**—Extra large and full; fine form; deep carmine color; very fragrant; free bloomer; an excellent rose.
- Perle Des Jardens (T.)**—Fine straw yellow, sometimes deep canary yellow; very large and full, and the most perfect form; one of the finest roses grown.
- Perle d'Or (P.)**—Charming and very distinct; color coppery gold, changing to fawn and salmon; flat-rayed form, very double and elegantly perfumed; a constant and profuse bloomer.
- Perpetual White (M.)**—Pure white, blooming in clusters.
- Persian Yellow (B.)**—Deep, bright yellow; small but prettily shaped; the foliage has a faint scent of the common sweet briar.
- \*Philadelphia Rambler (P.)**—The flowers are borne in grand clusters, very double; color a deep rich crimson; it is a strong, fast grower with very luxuriant foliage; one of the best hardy climbers to date.
- Prince Camille De Rohan (H. P.)**—Rich dark velvety crimson, changing to scarlet maroon; full, double and sweet.
- Paul's Early Blush (H. P.)**—A superb rose in every respect; color light silvery blush; large, fine, bold shape, producing its flowers among the first and continuing throughout the season.
- Queen of Edgely (H. T.)**—Pink American Beauty.
- \*Red Marechal Niel.**—Identical in growth with the older variety; color clear bright red; full and sweet; an extra good sort.
- \*Reine Marie Henriette.**—An extra fine climbing variety; flowers large, full and handsome; color clear cherry red; a grand acquisition to climbing roses.
- \*Reine Olga De Wurtemberg.**—Large, full and fine; color bright cherry, and occasionally tinted with white; a new color in climbers, and we cheerfully recommend it.
- \*Reve D'Or.**—Climbing Safrano, beautiful rose color, pale orange yellow or rosy buff; good size; full and sweet; vigorous.
- Rhea Reid (H. T.)**—Cherry crimson, very large, full and sweet.
- Richmond (H. T.)**—Pure rich scarlet, very free and continuous flowering; splendid forcer.
- Rubens (T.)**—Lovely pale yellow, slightly tinged with fawn, very double, sweet and large, full flower; very desirable.
- Rainbow (T.)**—The color is a lovely shade of deep coral pink, beautifully striped and mottled in a most unique manner with intense glowing crimson, elegantly colored in center with rich gold and amber; makes beautiful buds and the flowers, which are extra large, are very sweet and of great depth and substance.



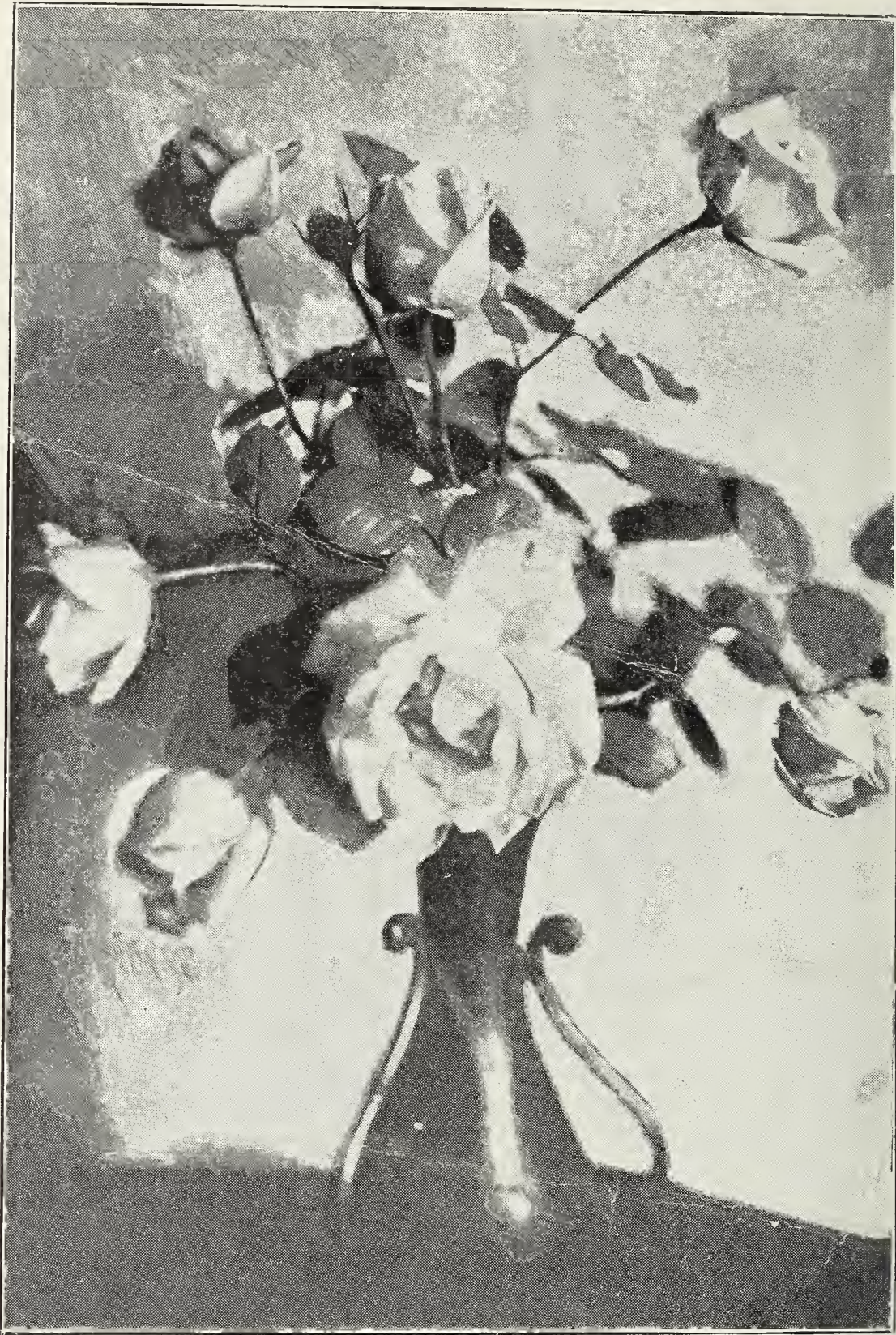
- Striped La France (H. T.)**—This rose combines all the good qualities of La France in growth, fragrance, shape of bud and flowers; a free bloomer; nicely striped, the marking plain and distinct, and the variegation a beautiful bright rose and satiny pink.
- Souvenir De Wooten (T.)**—Beautiful bright crimson, changing to deep red; beautiful buds and double flowers; a good bloomer and one of the finest red Teas.
- Safrano (T.)**—One of the old favorites; a constant bloomer; color a shade between buff and apricot; indispensable to the garden.
- Senator Vaisse (H. P.)**—Fine dazzling red; large, double and fine form; very free bloomer.
- Soliel d'Or (B.)**—Varying from orange yellow to reddish gold, shaded with nasturtium red; conical shaped buds, opening to large, full, flat-shaped flowers; very hardy and free blooming.
- Souvenir De Malmaison (B.)**—Hardy; free blooming; of beautiful, clear flesh color; edges bluish; superb.
- Souvenir de Catherine Guillot (T.)**—Orange-red, tinted carmine on a yellow ground; very beautiful.
- Sarah Isabel Gill (T.)**—Glowing apricot, edges of petals assuming a primrose yellow as it develops; bud long and perfectly formed; floriferous.
- Souvenir De Pierre Notting (T.)**—Apricot yellow, blended with coppery yellow; bud long, opening to a large, full flower.
- Souvenir D'Un Ami (T.)**—Salmon rose shaded, reverse of petals silver pink; large, globular buds, very full; a splendid variety.
- Souv. Du President Carnot (H. T.)**—Large, full, double exquisitely shaped flowers, with heavy, thick, shell-like petals; the buds are long and pointed; the color is new, delicate, rosy blush, shaded a trifle deeper at center of the flower.
- \*Solfaterre**—Fine, clear, sulphur yellow; good form, large, full and sweet.
- Sunrise (T.)**—In close bud form it shows a deep coppery pink, but as the flower opens, the inner part of it shades from a clear yellow to a deep copper, making a very pretty effect.
- Sunset (T.)**—Identical in every respect with Perle des Jardins, except that its color is that of rich saffron and orange.
- \*Tausendschon (P.)**—Pink, rosy carmine when expanded; large clusters.
- The Bride (T.)**—An ever-blooming, pure white Tea rose, of large size and most perfect form; the buds are pointed and the ends of the petals are slightly recurved.
- Tom Wood (H. P.)**—Cherry red; large, full, perfectly formed.
- Triumph de Luxemburg (T.)**—Deep rosy-pink, shading off lighter towards the outer petals; large, full and well-pointed buds and flowers.
- The Queen (T.)**—A pure white sport from Souvenir d'Un Ami; a vigorous and healthy grower, and continuous bloomer, producing a great abundance of buds and flowers all through the season.
- Ulrich Brunner (H. P.)**—This we consider one of the most satisfactory of all the Hybrids; flowers large, full and sweet; color bright, clear red; a profuse bloomer and hardy grower.
- \*Veilchenblau (Blue Rose.)**—Small flowers produced in large masses; opening buds reddish lilac, changing to steel bluish purple; very distinct and pleasing; described by the originator as a Blue Rose.
- Viscountess Folkstone (T.)**—Creamy pink; large, full and sweet; a vigorous grower and an excellent rose in every respect.
- Viridiflora.**—The green rose.
- Vick's Caprice (H. P.)**—A striking rose, totally unlike any other variety; the flowers are large, slightly cup-shaped, but full and deep; the petals are thick and lasting, having a ground color of satiny pink, distinctly striped and dashed with white and bright carmine.
- White Killarney (H. T.)**—A pure white sport from the older variety, which it greatly resembles.
- White Maman Cochet (T.)**—Identical with the pink of the same variety; beautiful white buds, long and pointed; very sweet and graceful; one of the best of the new white varieties.
- \*William Allen Richardson.**—Coppery yellow, flushed with carmine; flowers large, full and fragrant.
- White Baby (P.)**—Pure white, small flowers; continuous and very free bloomer.
- Winnie Davis (T.)**—Buds long and pointed, opening up into a large, full flower; color silvery lilac-rose, graduating into amber-white at the base of the petals.

**\*Wichuriana.**—This hardy and lasting rose creeps over the ground like Ivy; the leaves are glossy, dark green and handsomely notched; the flowers which are borne very profusely during July, are large, pure white, single, with yellow center, and have a strong, wild rose fragrance; it is one of the best plants for rock work, embankment, slopes, cemeteries, etc., etc.

**White Bath (M.)**—Large buds densely covered with lovely moss; color pinkish white, shaded with rose; large, full and sweet.

**Yvonne Vacherot (H. T.)**—Porcelain white suffused with pink, large and well formed.





LADY HILLINGDON

***THE E. GILL NURSERY CO.*** was awarded  
a Gold Medal for the best display of **ROSES**  
at the **PANAMA-PACIFIC INTERNA-**  
**TIONAL EXPOSITION, 1915.**