













20  
4520  
508.7291  
S141  
t.3  
132

# HISTOIRE

PHYSIQUE, POLITIQUE ET NATURELLE

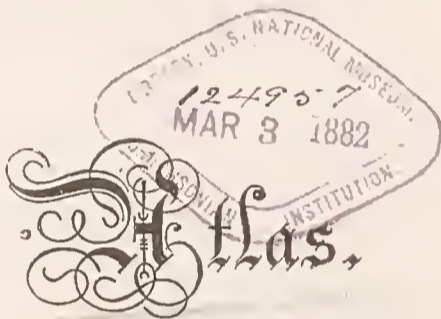
DE

# L'ILE DE CUBA

PAR M. RAMON DE LA SAGRA,

DIRECTEUR DU JARDIN BOTANIQUE DE LA HAVANE,

CORRESPONDANT DE L'INSTITUT ROYAL DE FRANCE, ETC.



66



FIGUS INDICA.

PARIS,

ARTHUS BERTRAND, LIBRAIRE-ÉDITEUR,

LIBRAIRE DE LA SOCIÉTÉ DE GÉOGRAPHIE

ET DE LA SOCIÉTÉ ROYALE DES ANTIQUAIRES DU NORD,

RUE HAUTEFEUILLE, 23.





QH  
109  
c9  
5244  
1836 folio  
[4.3] Atlas, C. 1  
504 HRB

# TABLE DES PLANCHES

CONTENUES

## DANS CET ATLAS.

### MAMMIFÈRES.

- Planche 1. *VESPERTILIO lepidus* (mâle), Gervais.  
2. *VESPERTILIO Dutertreus*, Gervais; espèce voisine du *VESPERTILIO carolinensis*.  
3. *CAPROMYS Furnieri*, Desm.  
4. *CAPROMYS Furnieri*, variété rousse.

- Planche 5. *CAPROMYS PREHENSILIS* (Pœppig), variété.  
6. SQUELETTE DU *CAPROMYS Furnieri*, Desm.  
7. CRANE ET MANDIBULES AVEC DENTS DU *CAPROMYS Furnieri*.  
8. DÉTAILS DU *CAPROMYS*.

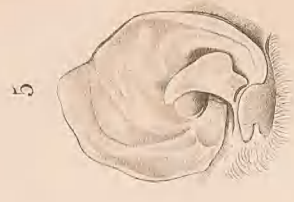
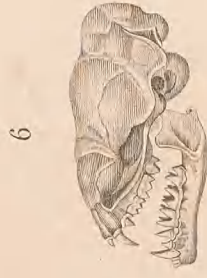
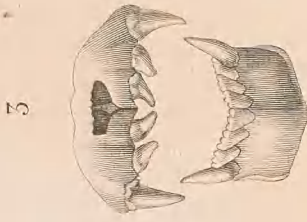
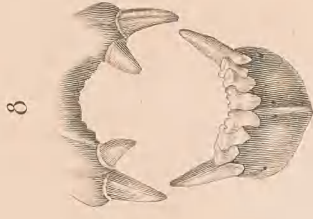
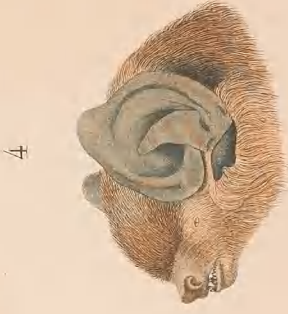
### OISEAUX.

- Planche 4. *FALCO sparverioides*.  
2. *OTUS siguapa*, d'Orb.  
3. *NOCTUA siju*, d'Orb.  
4. *TURDUS rubripes*.  
5. *TURDUS minor*.  
6. *SCIURUS sulfurascens*, d'Orb.  
7. *TURDUS carolinensis*.  
8. *SYLVIA palmarum*.  
9. *SYLVIA caerulescens*.  
10. *SYLVIA maritima*.  
11. *TANAGRA zena*.  
12. *TYRANNUS caudifasciatus*, d'Orb.  
13. *TYRANNUS magnirostris*, d'Orb.  
14. *TYRANNUS matutinus*.  
15. *PASSERINA olivacea*.  
16. *LINARIA caniceps*, d'Orb.  
17. *PYRRHULA nigra*.  
18. *QUISCALUS barytus*.

- Planche 19. *QUISCALUS atrovioleaceus*, d'Orb.  
19 bis. *XANTHORNUS dominicensis*.  
20. *ICTERUS humeralis*, d'Orb.  
21. { Fig. 1<sup>re</sup>. *ORTHORHYNCHUS colubris*.  
      { Fig. 2<sup>e</sup>. *ORTHORHYNCHUS Ricordii*.  
22. *TODUS multicolor*.  
23. *COLAPTES superciliaris*.  
24. *COLAPTES Fernandinæ*.  
25. { Fig. 1<sup>re</sup>. *SAUROTHERA Merlini*, d'Orb.  
      { Fig. 2<sup>e</sup>, 3<sup>e</sup>. *CROTOPHAGA ani*.  
26. *TROGON temnurus*.  
27. *COLUMBA portoricensis*.  
28. *COLUMBA inornata*.  
29. *PHOENICOPTERUS americanus*.  
30. *ANAS sponsa*.  
31. { Fig. 1<sup>re</sup>. *TOTANUS flavipes*.  
      { Fig. 2<sup>e</sup>. *ARAMUS guarauna*.  
      { Fig. 3<sup>e</sup>. *RALLUS longirostris*.  
      { Fig. 4<sup>e</sup>. *PARRA jacana*.

DEI

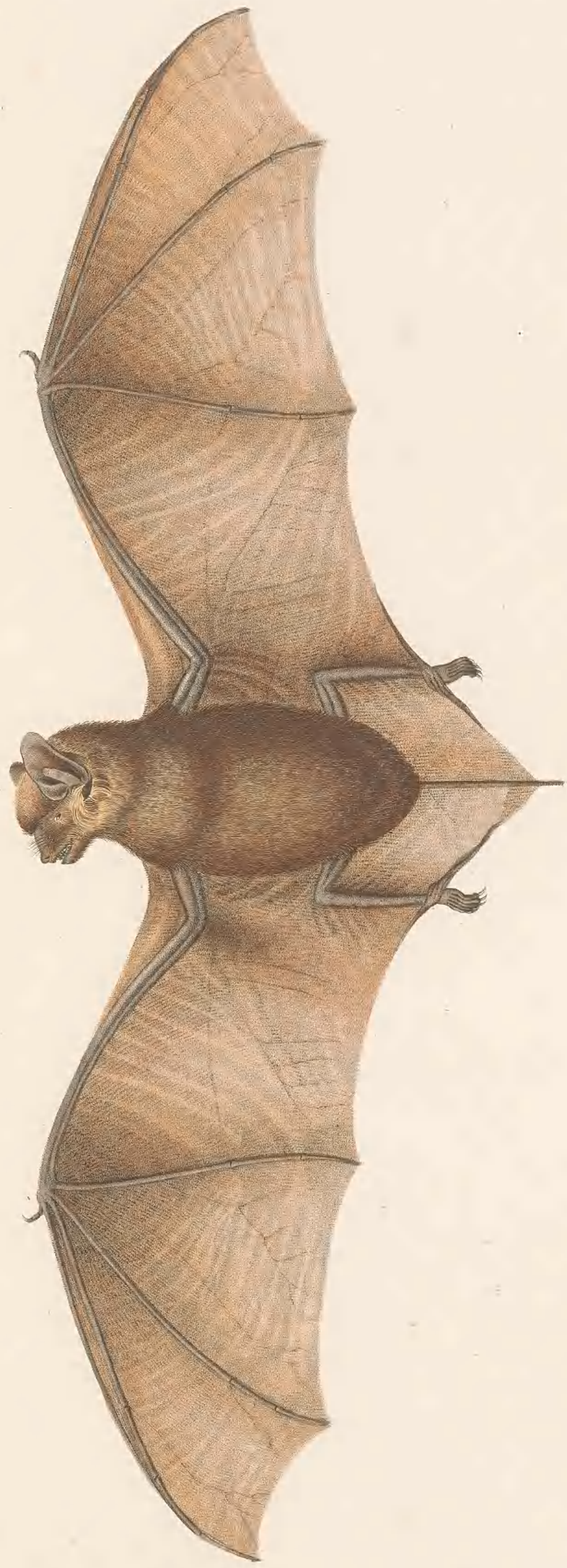




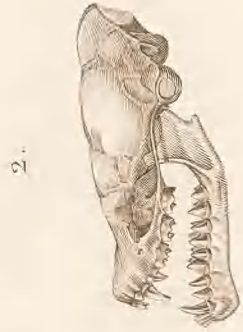
*VESPERTILIO lepidus. Gervais.*

*Vulg. MURCIELAGO.*

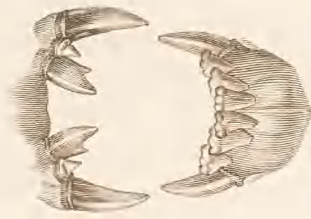




5/6



2.



3.



1.

*VESPERTILIO Dutertreus. Genus.*





*CAPROMYS Fumieri, Desm.*

*Vulg.* HUTIA CONGA.







*CAPROMYS Fumieri.* Var.

*HUTIA Valenzuela.*



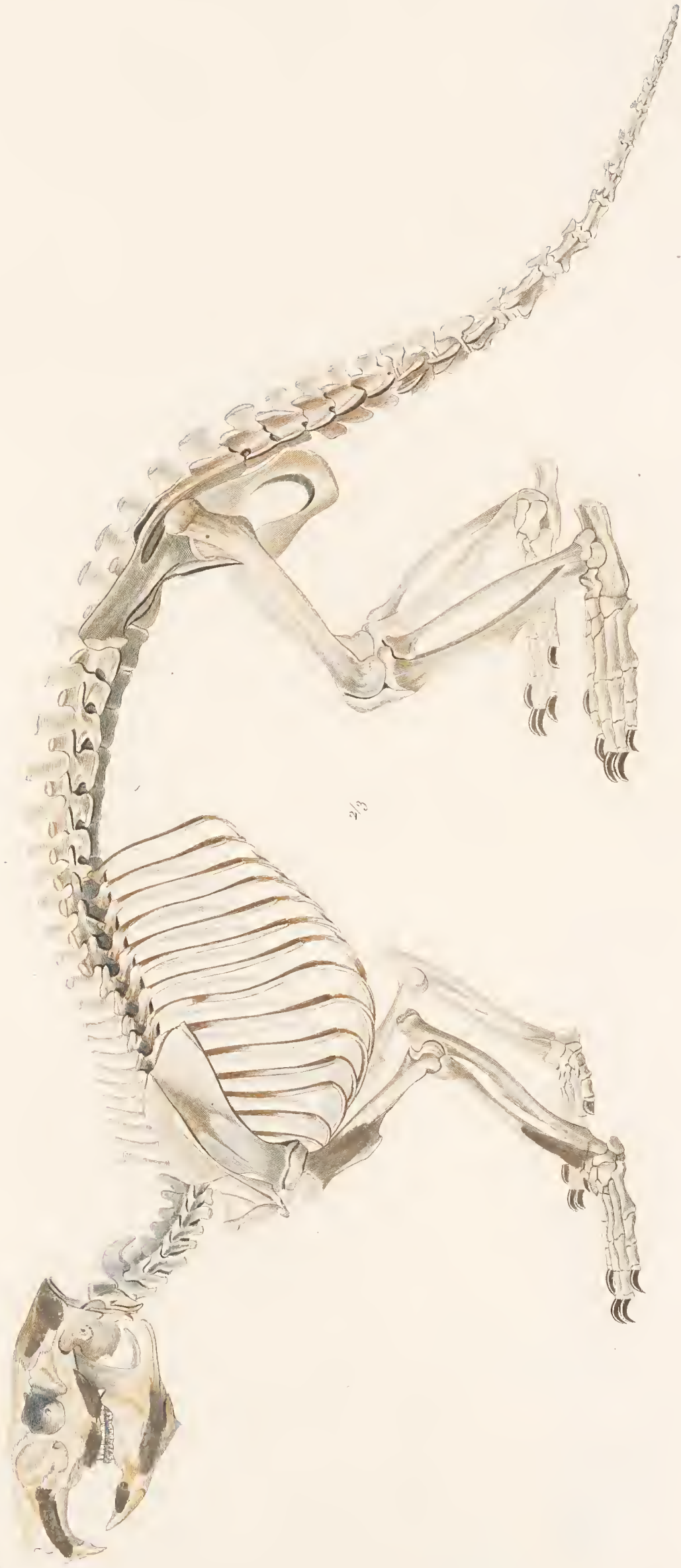


*CAPROMYS prehensilis.* Pappij. Var.

Vulg. HUTIA CARABALI.

Var. HUTIA Poey.

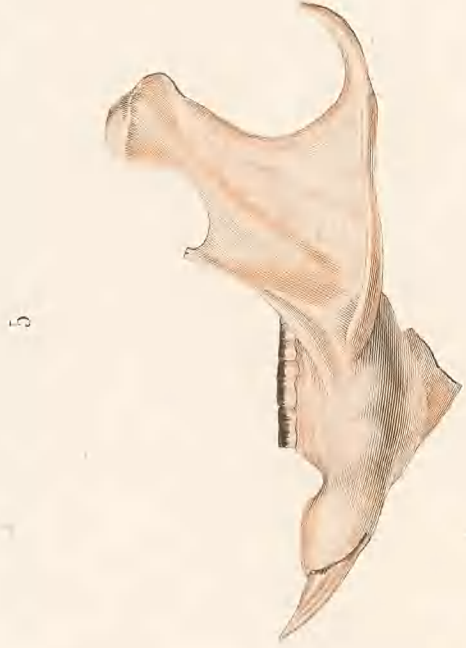
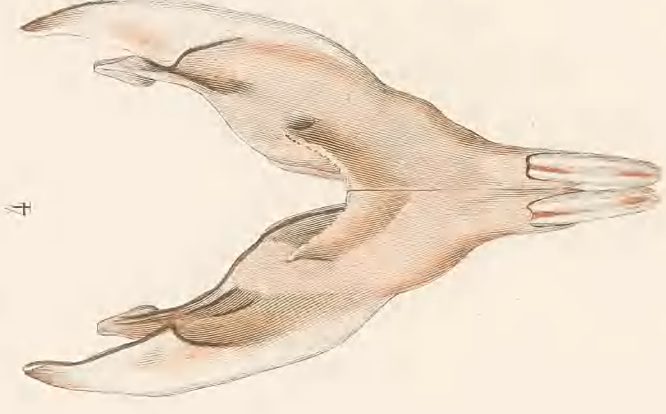
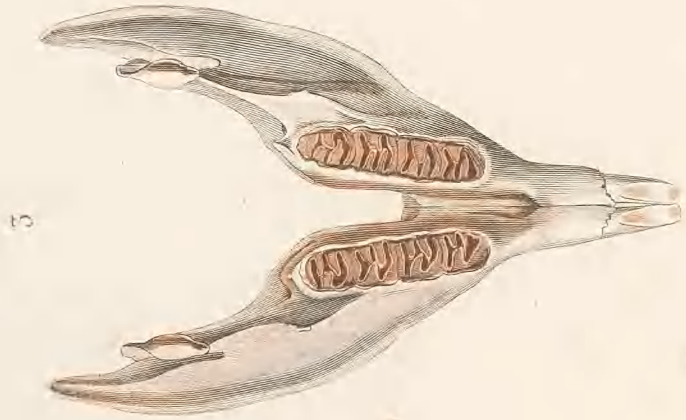
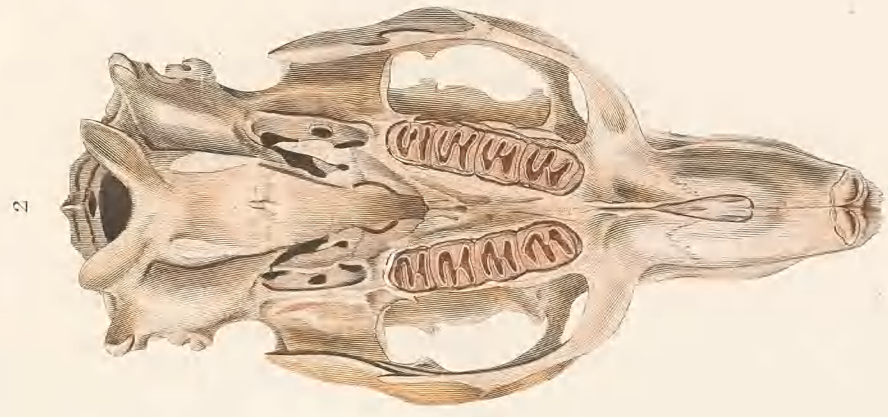




2/3

*CAPROMYS FUNNIERI. LAM.*





*CAPROMYS furnieri.*

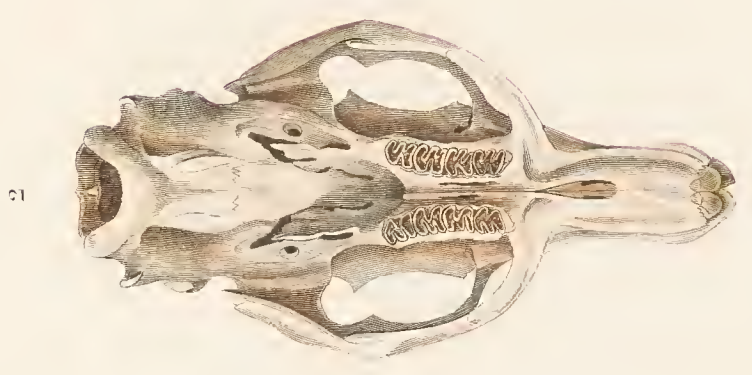
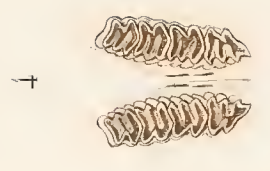
*Bourronée pinox.*

*Boucard imp.*

*Brown sculp.*







CAPROMYS.

*Breton sculp.*

*Boisgard imp.*

*Barroniè pitax.*





*FALCO Sparverius.* Var. *Gmel.*

(*F. Sparverioides.* Mas. *Vig.*)

Vulg. CERNICALO.

*Bougard sup*

*Præf. 10*





*OTUS* *signata*. *McC.*

*(ulq)* *SIGUAPA*.





*NOCTUA Siju. L'Gr.*

*Vulg. SIJU.*

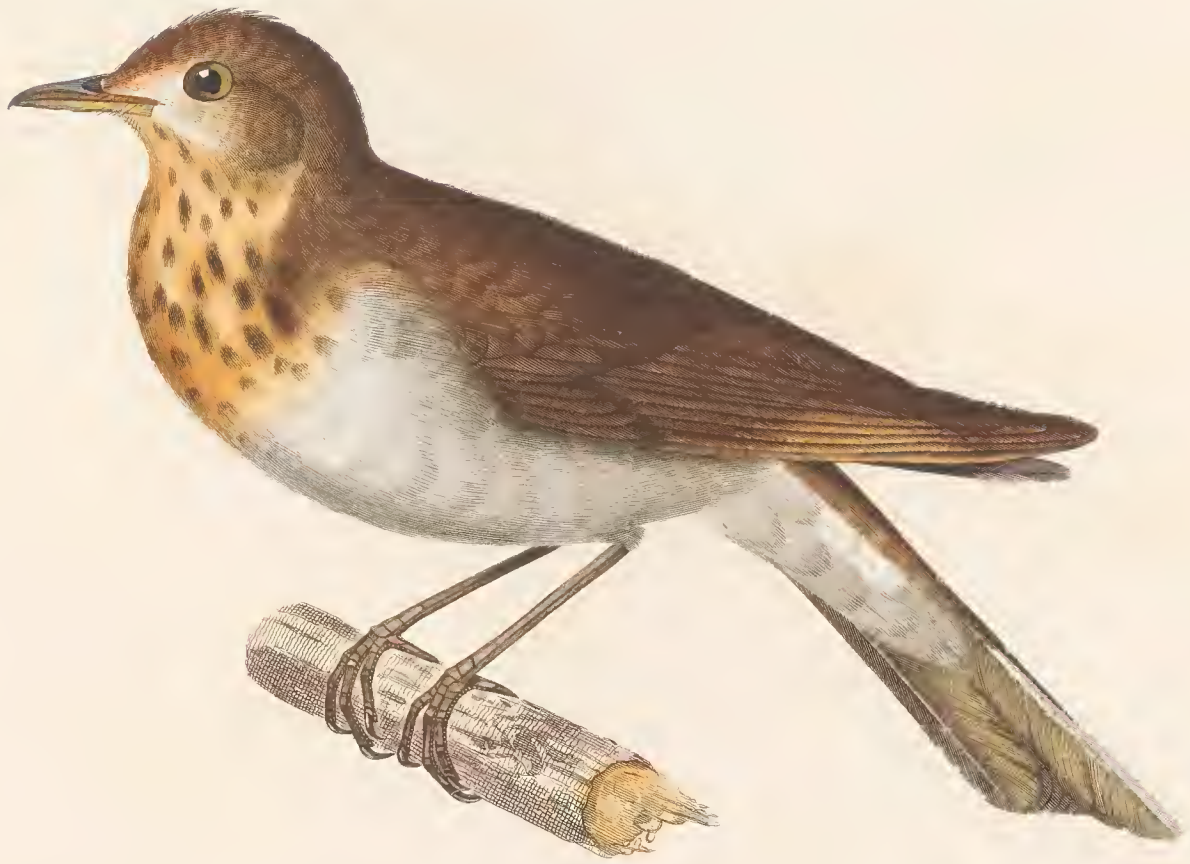






*TURDUS rubripes.* *Cum.*  
*(Vulg.) ZORZAL de patas coloradas.*





*TURDUS minor, Linn.*





o/o

*SCIURUS sulfurascens. Mel.*

*Travis pinx.*

*Bougeard imp.*

*Dardinet sculp.*





*ORPHEUS carolinensis.*

*Vulp. ZORZAL gato.*







*SYLVIA palmarum. Lath.*





*SYLVIA caerulea*. 1 Mas. 2 Fem.

*Colp* BIJIRTA.





*SYLVIA* *maritima.* *W.B.*  
*Vulg.* BIJIRITA.





TANAGRA zena. Vig. 1 Mas. 2 Fem

Vulg. CABRERO.







*TYRANNUS caudifasciatus. Mel.*

*Calif.* PITIRRE.





TYRANNUS magnirostris. L'Ét.

Vulp. PITIRRE.





*TYRANNUS matutinus. Vieill.*

*Vulg. PITIRRE.*





*PASSERINA olivacea.* *Vieill.*

*Vulg.* TOMEGUIN *del Pinar.*







*FINNARIA caniceps. L'Ét.*  
*(Vulg.)* TOMEGUIN.





G.N.

*PYRRHULA nigra. Vieill.*

*Vulgo. NEGRITO.*





*QUISCALUS Barittus.*

(Vulg.) MAYO Chignaco.





*QUISCALUS atroriolaceus. Hel.*

*July* TOTI.







*ICTERUS* *Dominicensis*.

*Vulg.* MAYITO.





*ICTERUS humeralis. L'Ét.*  
*(Culq.) TORDO.*





1. *ORTHORHYNCHIUS colubris.*

2. *O* \_\_\_\_\_ *Ricordii.*

*Valg.* ZUN - ZUN.





G. N.

*TODUS multicolor. Gould.*  
*July* PEORRERA.







*COLAPTES superciliaris. Fig. (Var. alb.)*

*Vel CARPINTERO comun*





*COLAPTES Ferdinandus*, (L.)

*Colaptes* CARPINTERO.





*SAUROTHERA Merlini. L'Ch.*

*vulq.* ARRIERO.





*TROGON temperatus. Comm.*

*July. TOCORORO.*



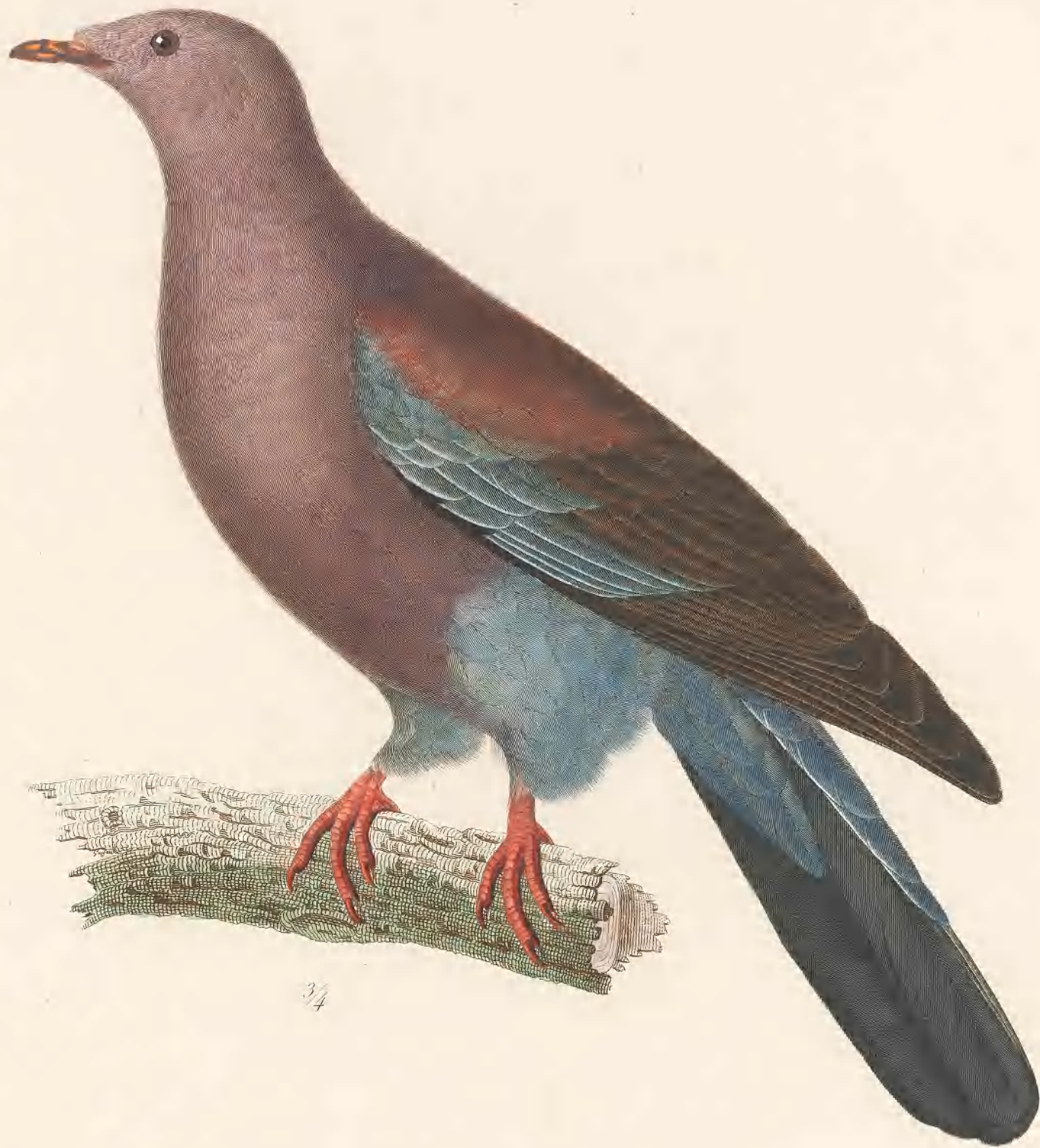




*COLUMBA portoricensis. Temm.*

*Vulg. PALOMA morada.*





34

*COLUMBA inornata, Vigors.*

*Vulg. PALOMA torcaza.*







*PHENICOPTERUS americanus. Linn.*  
*Vulq.* FLAMENCO.





*ANAS Sponsa, Linn.*

*Vulg.* HUYUYO.





5



5



1



2



4



1. *TOTANUS flavipes*, Vieill. 2. *PARRA jacana*, Linn.  
3, 4. *ARAMUS guarana*. 5. *RALLUS longirostris*, Quoy.





*Hübner pinx.*

*Gratelot sc.*

- |                                |   |  |                                 |
|--------------------------------|---|--|---------------------------------|
| 1 <i>Charadrius vociferus.</i> | 7 <i>Columba zenaida.</i>                 | 13 <i>Pteropus (?) vulg. Solivie.</i>        | 19 <i>..... vulg. Bucerot.</i>  |
| 2 <i>Columba dominicensis.</i> | 8 <i>Zenaidura macroura.</i>              | 14 <i>Pteropus vulgaris.</i>                 | 20 <i>Sturnella Ludovician.</i> |
| 3 <i>Falco.....(?)</i>         | 9 <i>Tyrannus.....(?)</i>                 | 15 <i>Columba passerina.</i>                 | 21 <i>Sayornis nigricans.</i>   |
| 4 <i>Anas sponsa.</i>          | 10 <i>Pipilo chlorurus.</i>               | 16 <i>Picus (?) vulg. Carpinter. jamaic.</i> | 22 <i>Crotophaga ani</i>        |
| 5 <i>Zenaidura macroura.</i>   | 11 <i>Muscivora virens.</i>               | 17 <i>Picus (?) vulg. Carpinter. cont.</i>   | 23 <i>Corvus Jamaicensis.</i>   |
| 6 <i>Falco rubripes</i>        | 12 <i>Zenaidura macroura. Tota magis.</i> | 18 <i>Columba carolinensis.</i>              | 24 <i>..... Liza.</i>           |

1/2 I 1128<sup>(2)</sup>







**QH** Sagra, Ramón de la,  
**109.C9** 1798-1871,  
**S2414** Histoire physique,  
**1838 folio** politique et naturelle de  
**[t. 3], atlas** l'île de Cuba /  
**c. 1**  
**SCNHRB** 1838-1857.



Smithsonian Libraries



39088000959106

