

澤女集 第一

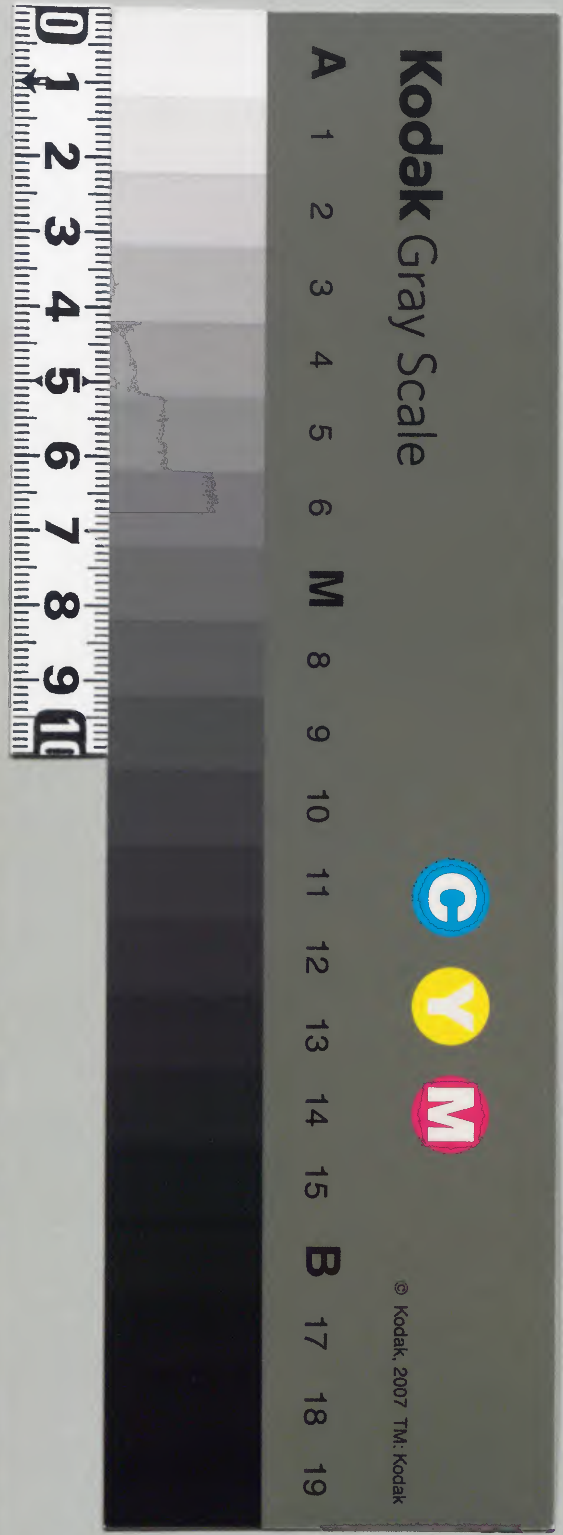
和書門
二五三九八
六八八
二八八
架函號類

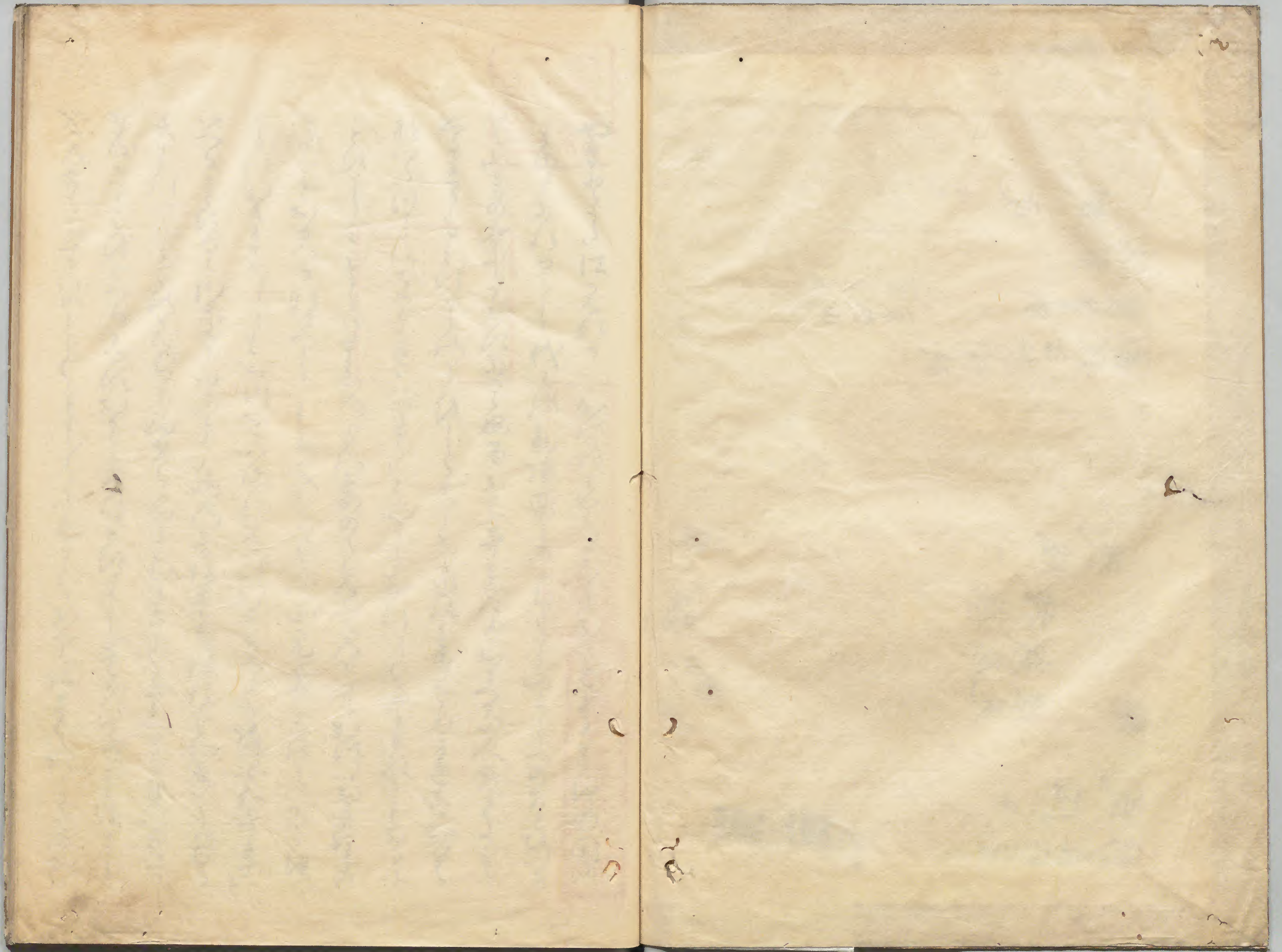
502
庫文閣内
和書
二五三九八
四八
函冊號類
二七架

和

内閣文庫	
番號	和 25398
冊數	4 (1)
函號	201 502

201-502





書
籍
印

書
籍
印

淺草文庫

和學研究の園

Handwritten text in cursive style (sōsho), likely a preface or introduction, written vertically from right to left. The text is dense and covers most of the page.

Handwritten text in cursive Japanese style (sōsho), consisting of approximately 18 lines of vertical script.

Handwritten text in cursive Japanese style (sōsho), consisting of approximately 18 lines of vertical script. The text includes several red ink annotations: a red character '花' (flower) on the 10th line, a red character '花' (flower) on the 11th line, and a red character '花' (flower) on the 12th line.

あはれなるにこそぞ
あはれなるにこそぞ
あはれなるにこそぞ
あはれなるにこそぞ
あはれなるにこそぞ
あはれなるにこそぞ
あはれなるにこそぞ
あはれなるにこそぞ
あはれなるにこそぞ
あはれなるにこそぞ

麦

あはれなるにこそぞ
あはれなるにこそぞ
あはれなるにこそぞ
あはれなるにこそぞ
あはれなるにこそぞ
あはれなるにこそぞ
あはれなるにこそぞ
あはれなるにこそぞ
あはれなるにこそぞ
あはれなるにこそぞ

あはれなるにこそぞ
あはれなるにこそぞ
あはれなるにこそぞ
あはれなるにこそぞ
あはれなるにこそぞ
あはれなるにこそぞ
あはれなるにこそぞ
あはれなるにこそぞ
あはれなるにこそぞ
あはれなるにこそぞ
あはれなるにこそぞ
あはれなるにこそぞ
あはれなるにこそぞ
あはれなるにこそぞ
あはれなるにこそぞ
あはれなるにこそぞ
あはれなるにこそぞ
あはれなるにこそぞ
あはれなるにこそぞ
あはれなるにこそぞ
あはれなるにこそぞ

Handwritten text in Arabic script, right page. The text is arranged in approximately 12 horizontal lines. Several lines begin with a red horizontal mark, likely indicating the start of a new section or a specific type of verse. The script is cursive and characteristic of classical Arabic manuscripts.

Handwritten text in Arabic script, left page. The text is arranged in approximately 12 horizontal lines, mirroring the layout of the right page. Like the right page, several lines begin with a red horizontal mark. The script is consistent with the right page, showing a continuous flow of text across the spread.

Handwritten text in cursive Japanese style (sōsho), consisting of approximately 12 lines of vertical writing. The ink is dark and the paper shows signs of age and wear.

Handwritten text in cursive Japanese style (sōsho), consisting of approximately 12 lines of vertical writing. The ink is dark and the paper shows signs of age and wear.

Handwritten text in cursive style, likely a list or record of items, possibly related to the 'Shūka' mentioned in the adjacent text. The text is written vertically and includes various characters and symbols.

已上百八十六首

皇者中書大之御題
朱者戸部高書題也

古思詠去正元二年之春依竹園之
所書進三百首之内也与方喜題乎未

除之平

正應五年五月廿書

前右議藤原朝臣

物點十八首 以朱

永仁元年十二月十二日改定

Handwritten text in a cursive script, likely Japanese, spanning across the gutter of the open book. The text is written vertically on the right page and continues onto the left page. The characters are somewhat faded and difficult to decipher precisely, but appear to be a continuous passage of text.



