

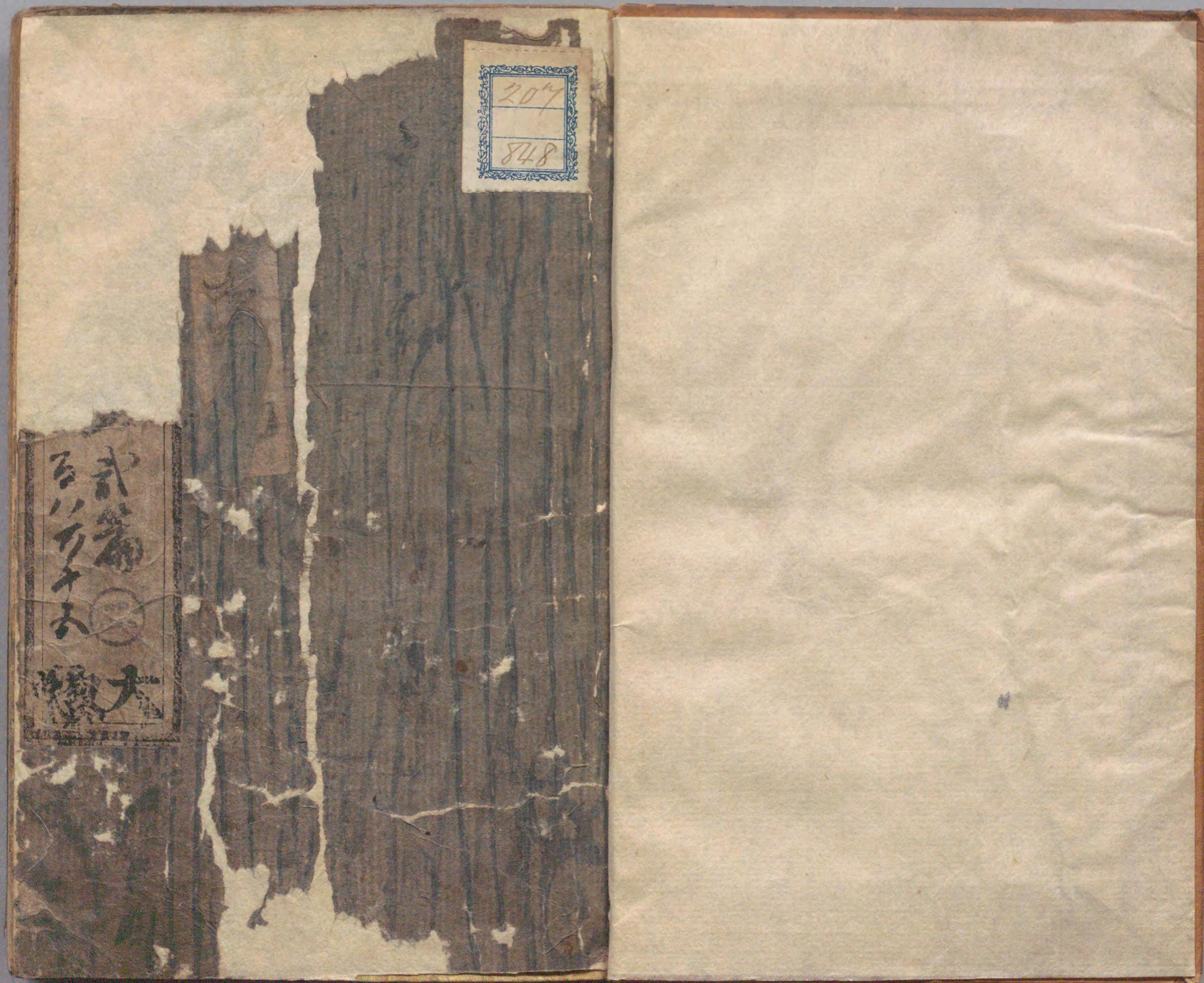
207
848

国立国会図書館

大内山月雪花誌 207-848



ガラス使用



207
848

式部
大



国立国会図書館 大内山月雪花誌 207-848

ガラス使用



東里山人作
溪齋英泉画

後編上ノ巻

大内山月雪花誌

文政六癸未年新刻

板元

榮林堂 岩屋喜三郎





Handwritten text in a cursive style, likely a form of Japanese calligraphy (kuzushiji), located above the illustration on the left page.



Handwritten text in a cursive style, likely a form of Japanese calligraphy (kuzushiji), located above the illustration on the right page.

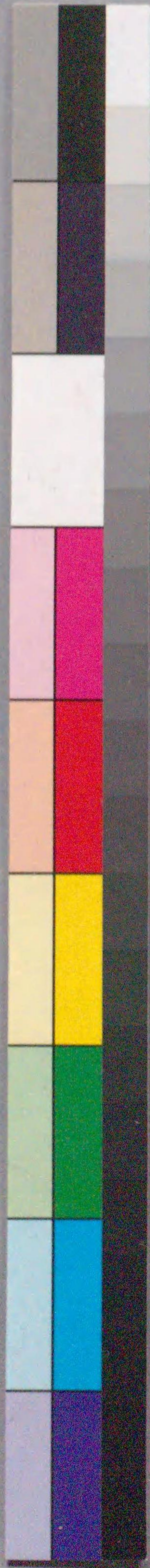




国立国会図書館 大内山月雪花誌 207-848



ガラス使用



Handwritten text in a cursive style, likely a chapter heading or introductory text, located at the top of the left page.



Small handwritten text at the bottom of the left page, possibly a signature or a short note.

Handwritten text in a cursive style, likely a chapter heading or introductory text, located at the top of the right page.



Small handwritten text at the bottom of the right page, possibly a signature or a short note.

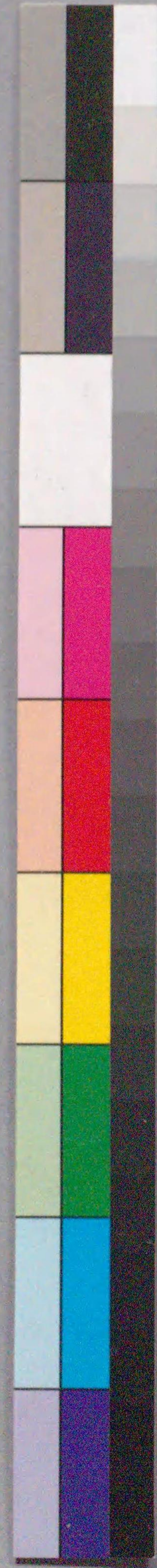
Vertical handwritten text on the right edge of the right page.



Handwritten text in a cursive script, likely a form of Japanese calligraphy, located at the top of the left page.



Handwritten text in a cursive script, likely a form of Japanese calligraphy, located at the top of the right page.





大内山月雪花誌

溪齋英泉画





Handwritten Japanese text in the bottom left corner of the left page, likely a title or chapter heading.

Handwritten Japanese text in the bottom right corner of the right page, likely a title or chapter heading.



Handwritten text in a cursive script, likely a Japanese dialect or a specific form of shorthand, surrounding the illustration of a woman. The text is arranged in vertical columns, with some characters circled or marked.



Handwritten text in a cursive script, likely a Japanese dialect or a specific form of shorthand, surrounding the illustration of a man and a lantern. The text is arranged in vertical columns, with some characters circled or marked.





Handwritten text in a cursive script, likely a form of Japanese calligraphy, surrounding the illustration on the left page.



Handwritten text in a cursive script, likely a form of Japanese calligraphy, surrounding the illustration on the right page.





Handwritten text in a cursive Japanese style (sōsho) is arranged in vertical columns across the illustration. The text appears to be a narrative or commentary related to the scene depicted.



Handwritten text in a cursive Japanese style (sōsho) is arranged in vertical columns across the illustration. The text appears to be a narrative or commentary related to the scene depicted.





大内山月雪花誌

三十四





Handwritten text in the upper left corner of the illustration, written in a cursive style.

Handwritten text in the lower left corner of the illustration, written in a cursive style.



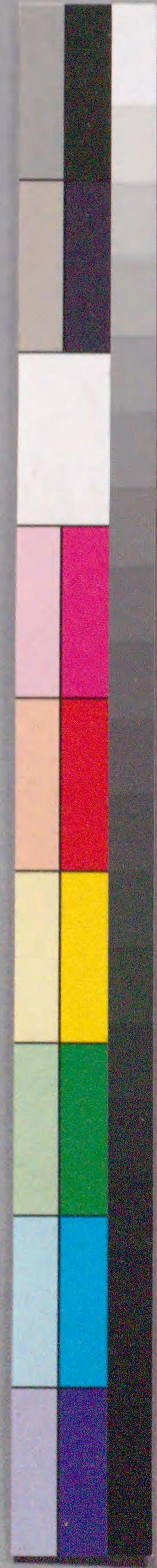
Handwritten text in the lower right corner of the illustration, written in a cursive style.



岩戸屋喜三郎梓



後編 下巻





Handwritten Japanese text in vertical columns, located below the illustration of the man and woman. The text is written in a cursive style.



Handwritten Japanese text in vertical columns, located below the illustration of the ornate object. The text is written in a cursive style.

Handwritten Japanese text in vertical columns at the top of the right page. The text is written in a cursive style.



Handwritten Japanese text in vertical columns at the bottom of the right page, below the illustration of the two women. The text is written in a cursive style.





Handwritten text in a cursive script, likely a form of shorthand or a specific dialect, located in the upper left section of the left page.



Handwritten text in a cursive script, continuing from the upper section, located in the middle left section of the left page.

Handwritten text in a cursive script, located in the lower left section of the left page.

Handwritten text in a cursive script, located in the upper right section of the right page.



Handwritten text in a cursive script, located in the middle right section of the right page.



Handwritten text in a cursive script, located in the lower right section of the right page.



Handwritten text in a cursive script, likely a form of Japanese calligraphy, arranged in vertical columns. The text is densely packed and covers most of the page area.



Additional handwritten text located below the illustration of the person in the hat, continuing the vertical columns of script.



Small handwritten text or labels positioned below the illustration of the two women.

Handwritten text in a cursive script, arranged in vertical columns on the right page of the manuscript.



Small handwritten text or labels positioned below the illustration of the two women on the right page.





Handwritten text in a cursive style, likely a commentary or description related to the illustration. The text is arranged in vertical columns.

あまの
あまの
あまの
あまの
あまの
あまの
あまの
あまの
あまの
あまの



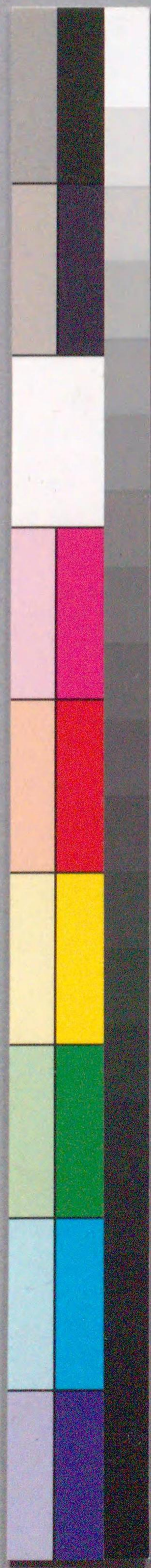
Handwritten text in a cursive style, likely a commentary or description related to the illustration. The text is arranged in vertical columns.

あまの
あまの
あまの
あまの
あまの
あまの
あまの
あまの
あまの
あまの

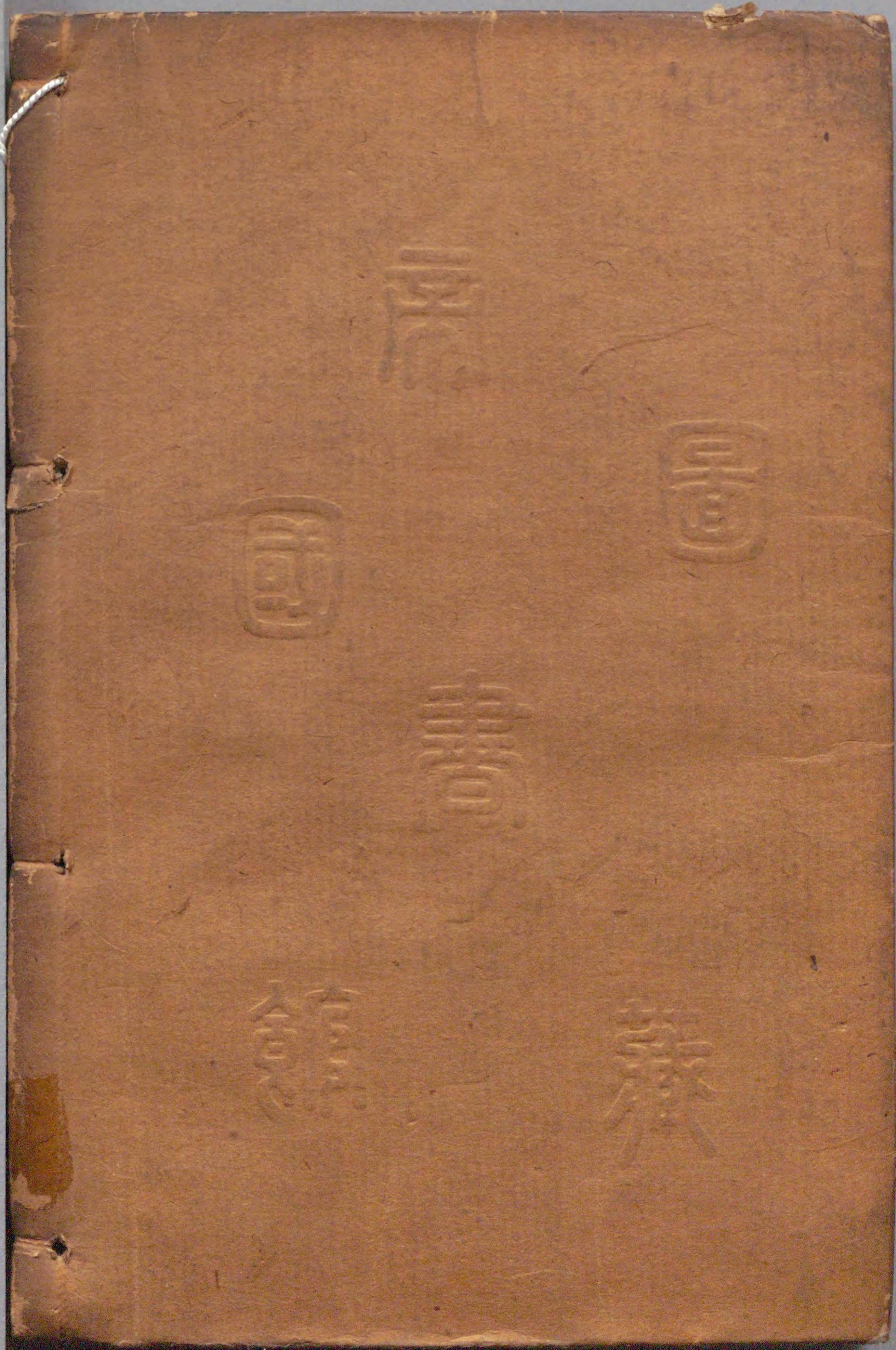




207
848



国立国会図書館 大内山月雪花誌 207-848



ガラス使用

