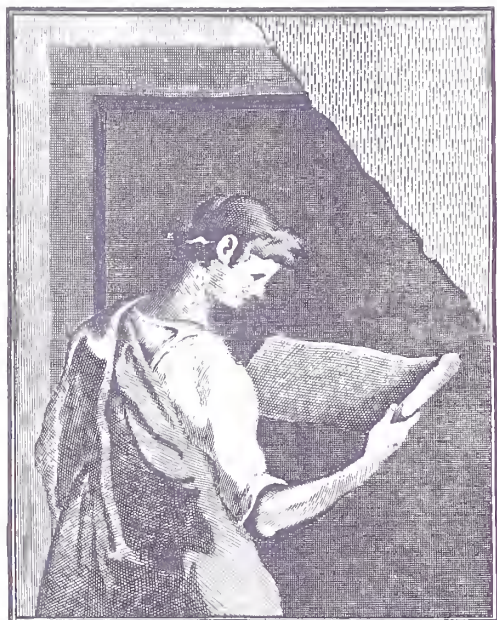


SET A

1/15



THE GETTY CENTER LIBRARY



Digitized by the Internet Archive
in 2016

<https://archive.org/details/originaldrawings00remb>

ORIGINAL DRAWINGS
BY REMBRANDT

In the Collection of

J. P. H.



PRIVATELY PRINTED

REPRODUCED BY THE AUTOTYPE COMPANY

LONDON

1907

NC
263
R36
269
2.2

REMBRANDT VAN RYN

Born at Leiden, probably 15 July, 1606; buried at Amsterdam in the Westerkerk, 8 October, 1669; married Saskia van Ulenburgh, 22 June, 1634. Saskia died at Amsterdam, June, 1642; buried, 19 June, in the Oudekerk.

Earliest dated picture, 1627.

Latest dated pictures, 1668.

The etchings date from 1628, and drawings from 1630.

There is no portrait of Rembrandt by any artist other than himself.



No. 1.

PORTRAIT OF AN OLD MAN SEATED WITH
LONG BEARD. FORMERLY CALLED
REMBRANDT'S FATHER

Red chalk.

Signed R. 1630.

Size, 157 by 147 mm.

Michel, 14.

Collection: De Vos.

Compare Vosmaer P. 487.



No. 2.

STUDIES OF SIX HEADS

On the reverse a landscape with two cottages.

Silver point on vellum; the only other two drawings in silver point on vellum are in Berlin Museum. One of these came from the collection of C. S. Bale, No. 2434.

Size, 135 by 81.

Michel, 3

Collection: Sir W. W. Knighton, Bart.



No. 3 and No. 6.

**TWO STUDIES OF A WOMAN CARRYING
A CHILD, STANDING**

Bistre, pen.

Size, 89 by 41 and 104 by 88.

Michel, 8.

Collection: Sir W. W. Knighton, Bart.

No. 4.

A SHEET OF VARIOUS STUDIES

Bistre, pen.

Size, 136 by 65.

Michel, 7.

Collection: Sir W. W. Knighton, Bart.

No. 5.

**STUDY OF TWO OLD MEN, POSSIBLY THE
ELDERS IN THE "SUSANNA" PICTURE
AT BERLIN**

Bistre, pen.

Size, 124 by 121.

Michel, 7.

Collection: Sir W. W. Knighton, Bart.





No. 7.

SLIGHT SKETCHES OF A WOMAN
HOLDING A BABY, AND OF THE
SAME WOMAN SEATED WITH
HER HANDS CLASPED

On the reverse is a slight sketch of a woman in bed
(? Saskia) and of a man wearing a hat in profile:
possibly this man is the Doctor, Ephraim Bonus.

Bistre.

Size, 209 by 136.

Michel, 64.

Collection : Sir W. W. Knighton, Bart.

No. 8.

STUDY OF A CHILD ASLEEP IN
A CRADLE

Pencil.

Size, 77 by 108.

Collections: W. Esdaile.

Cheney.

Sir F. Leighton.





No. 9.

AN OLD WOMAN ASLEEP SEATED WITH
HER HANDS CROSSED ON A BOOK

Bistre, pen and wash.

Size, 136 by 139.

Michel, 46.

Lippmann, 93.

Collections: Baron Denon.

J. Gigoux.

No. 10.

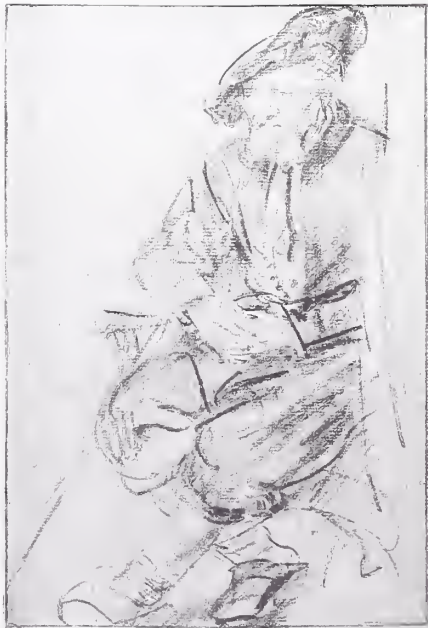
AN OLD WOMAN SEATED ASLEEP, HOLD-
ING A BOOK AND SPECTACLES

Pencil, washed with bistre.

Size, 165 by 154.

Michel, 47.

Collection: Baron Denon.



No. 11.

STUDY OF A GIRL SEATED AND ASLEEP
WITH HER HEAD RESTING ON A
CUSHION: PROFILE TO LEFT

Bistre.

Size, 140 by 99.

Michel, 92.

Collections: De Vos, 1833.
Goll. van Falkenstein.
De Vos.

No. 12.

AN OLD MAN SEATED IN AN ARM-CHAIR
WITH HIS LEGS CROSSED: LOOKING
TO LEFT NEARLY FULL FACE

Black chalk.

Size, 166 by 110.

Michel, 15.

Collection: Baron Verstolk, 1847.



No. 13.

YOUTH STANDING, SEEN FROM BEHIND

Bistre, wash.

Size, 160 by 92.

Collections: Bouverie.

Sir J. C. Robinson.

No. 14.

CHRIST ON THE MOUNT OF OLIVES

Bistre.

Size, 118 by 160.

Michel, 32.

Collection: Baring.



No. 15.

STUDY OF OLD MAN STANDING
TO RIGHT

Bistre, reed pen.

Size, 169 by 126.

Michel, 75.

Collections: Sir Thomas Lawrence.

W. Esdaile.

W. Mayor.

No. 16.

STUDY OF AN OLD MAN

Resembling the elder in the picture of "Susanna and
the Elders" at Berlin.

Bistre, reed pen.

Size, 173 by 135.

Michel, 6.

Collections: Sir Thomas Lawrence.

W. Esdaile.

C. S. Bale.





No. 17.

COPY OF A PERSIAN MINIATURE

Bistre.

Size, 94 by 86.

Michel, 1.

Collections: T. Hudson.
J. Richardson.
R. Holditch.
Lord Selsey.
R. P. Roupell.

No. 18.

THE CRUCIFIXION

Small study for the etching, B. 86.

Bistre, pen.

Size, 106 by 123.

Michel, 19.





No. 19.

OLD MAN TO RIGHT IN PROFILE
LEANING ON A STICK

Bistre.

Size, 83 by 70.

Collections: R. Dumesnil.
De Vos.

No. 20.

HEAD OF AN OLD MAN: THREE-
QUARTER FACE TO LEFT

Bistre, pen and wash.

Size, 84 by 81.

Michel, 4.

No. 21.

SLIGHT SKETCH OF A BALD-HEADED
MAN, FULL FACE: STUDY FOR AN
APOSTLE OR PHILOSOPHER

Bistre.

Size, 83 by 74.

Collections: R. Dumesnil.
De Vos.





No. 22.

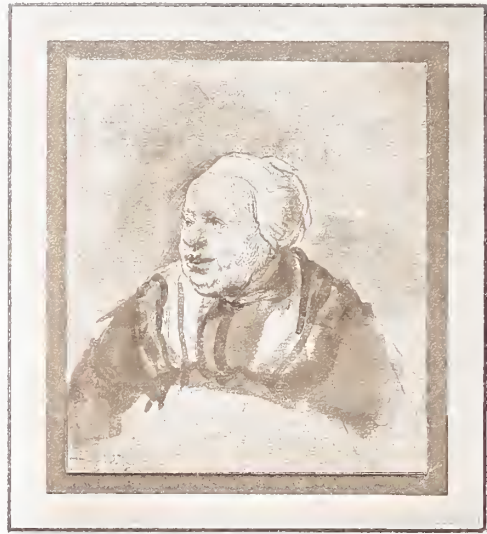
THE BLESSING OF JACOB

Sepia, washed with white and Indian ink.

Size, 174 by 220.

Michel, 53.

Collection: Sir W. W. Knighton, Bart.



No. 23.

STUDY OF AN OLD WOMAN

Resembling the woman in the "Ménage du Menuisier" at the Louvre.

Size, 108 by 93.

Michel, 59.

Collections: Sir Thomas Lawrence.

W. Esdaile.

C. S. Bale.

No. 24.

WOMAN READING

Bistre, wash.

Size, 67 by 87.

Michel, 2.

Collection: Sir W. W. Knighton, Bart.



No. 25.

STUDY FOR AN OLD MAN WEARING A TUR-
BAN: HE IS SEATED AT A TABLE ON
WHICH IS A LARGE BOOK AND
A CANDLESTICK

Bistre, wash.

Compare the etching of the Goldweigher and the
Ashburnham Rembrandt in Berlin.

Size, 185 by 172.

Michel, 38.

Lippmann, 89.



No. 26.

LION SEATED

Bistre, wash.

Size, 115 by 155.

Michel, 34.

Collection : Sir W. W. Knighton, Bart.

No. 27.

LION SEATED

Bistre, wash.

Size, 106 by 202.

Michel, 33.

Collection: Sir W. W. Knighton, Bart.



No. 28.

A LANDSCAPE WITH A FARM SUR-
ROUNDED WITH TREES BLOWN
BY THE WIND

Bistre, pen, on brown paper.

Size, 159 by 240.

Michel, 35.

Lippmann, 40.

Collections: J. P. Zoomer.

Woodburn.

Barron Grahame.



No. 29.

LANDSCAPE. HOUSE WITH TREES ON
THE BORDERS OF A CANAL

Indian ink, wash.

Size, 110 by 200. Top corners cut.

Michel, 26.

Collection, J. P. Zoomer.



No. 30.

A MAN FEEDING A CHILD

Inscribed on the mount "The Widower."

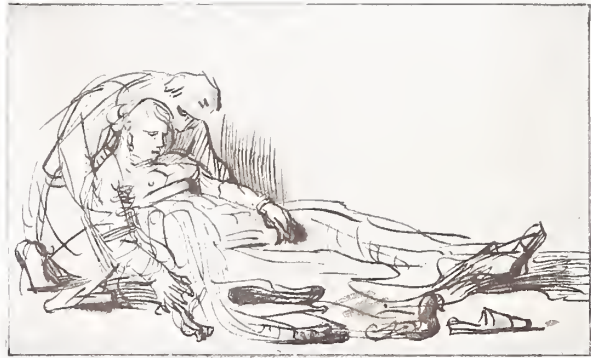
Bistre.

Size, 173 by 142.

Michel, 60.

Lippmann, 45.

Collection: Woodburn.



No. 31.

STUDY, PROBABLY FOR THE VIRGIN
FAINTING AT THE FOOT OF
THE CROSS

Bistre, pen and wash.

Size, 95 by 153.

Michel, 12.

Collection: De Vos.

No. 32.

WOMAN ASLEEP IN BED

Bistre: reed pen.

Size, 129 by 178.

Michel, 72.

Collection: De Vos.



No. 33.

STUDY FOR THE DISCIPLES AT
EMMAUS

Bistre, pen.

Size, 175 by 158.

Michel, 64.

Collections: Sir Joshua Reynolds.
J. Richardson.
Barron Grahame.



No. 34.

SKETCH OF AN INTERIOR WITH OLD MAN
SEATED, WHILE A WOMAN PULLS OFF
HIS BOOTS: ANOTHER WOMAN
PREPARES THE BED

Size, 165 by 163.

Michel, 62.

This drawing is not at Stockholm as stated in
Michel's work. See plate P. 148.

Collection: R. P. Roupell.



No. 35.

VIEW IN A TOWN WITH A BRIDGE
OVER A CANAL

Bistre, washed with Indian ink.

Size, 145 by 194.

Michel, 24.

Collections: Sir Thomas Lawrence.
W. Esdaile.



No. 36.

LANDSCAPE WITH HOUSES BY A
ROAD-SIDE

Bistre.

Size, 143 by 202.

Michel, 60.

The cottage on the left seems to be the same as that
in the signed drawing No. 37.



No. 37.

A LARGE LANDSCAPE WITH A COTTAGE
AND TREES

Possibly the same cottage as in No. 36.

Bistre, wash.

Signed and dated "Rembrandt f^t 1644."

Size, 298 by 452.

Michel, 27.

Collections: John Barnard.

A. Pond ("True" A. Pond).

Sir Benjamin West.

Sir Thomas Lawrence.

W. Esdaile.

Barron Grahame.



No. 38.

LANDSCAPE, VIEW OVER A FLAT
COUNTRY: A COTTAGE
ON THE LEFT

Bistre, on brown paper.

Size, 80 by 210.



No. 39.

A LONG LANDSCAPE VIEWED FROM THE
TOW-PATH BESIDE A RIVER

Several sketches of the same place are in the collection of the Duke of Devonshire. On the reverse a slight sketch in pencil and the following verse:

“Dees tekeningh vertoont de buiten amstelkant
Soo braaf getekent door heer Rembrants eygen
hant.” P. Ko.

Bistre.

Size, 271 by 158.

Michel, 34.

Collections: Goll. van Falkenstein.
Sir Thomas Lawrence.
W. Esdaile.
Mr. James, 1875.
R. P. Roupell.



No. 40.

A LANDSCAPE WITH A CLUMP OF TREES
REFLECTED IN WATER

Bistre.

Size, 146 by 252.

Michel, 44.

Lippmann, 50.

Collections: T. Hudson.

Earl of Portarlington.



No. 41.

LANDSCAPE WITH A STORMY SKY

Bistre, wash.

Size, 132 by 189.

Michel, 21.

Collection: Sir W. W. Knighton, Bart.



No. 42.

HOUSES ROUND A COURTYARD WITH A
TREE IN THE FOREGROUND

Bistre, pen and wash.

Size, 125 by 251.

Michel, 22.

Collections: Bouverie.
R. P. Roupell.



No. 43.

A LANDSCAPE WITH A COTTAGE AND
BARN SURROUNDED WITH TREES

Bistre, wash.

Size, 102 by 160.

Michel, 24.

Collection: Sir W. W. Knighton, Bart.

No. 44.

LANDSCAPE WITH TREES AND COTTAGES
ON THE BANK OF A RIVER
WITH BOATS

Bistre, wash.

Size, 110 by 149.

Michel, 37.

Collections: Richardson.
R. Willett, 1808.
W. Esdaile.
C. S. Bale.



No. 45.

A VIEW OF A VILLAGE ON AN
OPEN PLAIN

Bistre, washed.

Size, 105 by 182.

Michel, 19.

Collections: R. Cosway.

G. S. monogram on small black round.

Dr. Wellesley.

F. T. Palgrave.

No. 46.

LANDSCAPE LOOKING UP A BROOK
IN FULL SUNSHINE

Bistre, wash.

Size, 157 by 200.

Michel, 27.

Collections: E. Utterson.

De Vos.



No. 47.

LANDSCAPE: A DISTANT VIEW
OF HAARLEM

Bistre, pen and bistre.

Size, 89 by 152.

Michel, 68.

Collections: Goll. van Falkenstein.
Sir Thomas Lawrence.
W. Esdaile.
C. S. Bale.



No. 48.

WOMAN SEATED HOLDING A CHILD

Study for the picture at Cassel, "The Woodcutter's Family."

Bistre.

Size, 104 by 87.

Michel, 18.

Collection: R. Dumesnil.
De Vos.

No. 49.

WOMAN SEATED, HER HEAD RESTING
ON HER HAND

Black chalk.

Size, 124 by 86.

Michel, 17.

Collection: De Vos.



No. 50.

HOLY FAMILY

Bistre, wash.

Size, 151 by 163.

Michel, 57.

The Virgin and Child are no doubt drawn from nature; the S. Joseph is drawn without a model.

Collection: Hibbert.



No. 51.

VIEW OF A VILLAGE SEEN FROM
A JETTY

Inscribed on the reverse "Sparendam."
Possibly the same place as in No. 45.

Bistre.

Size, 82 by 138.

Michel, 57.

Lippmann, 42.

Collection : Suermondt.



No. 52.

LANDSCAPE: VIEW OF AMSTERDAM
FROM OUTSIDE THE
FORTIFICATIONS

Bistre, wash, slightly touched with red and Indian ink. Inscribed on the reverse: "Het bolwerk, by d. s. Antonius poort in Amsterdam."

Size, 171 by 247.

Michel, 22.

Collection: Woodburn.



No. 53.

STUDY OF YOUNG MAN NUDE, SEATED
ON LOW SEAT WITH A RED CUSHION

Bistre and red chalk.

Size, 140 by 181.

Michel, 42.

Collections: E. Utterson.
W. Russell.



No. 54.

STUDY OF A NAKED YOUNG MAN STAND-
ING, HIS RIGHT ARM LEANING ON
THE BACK OF A CHAIR

Bistre, wash.

Size, 232 by 162.

Michel, 9.

Collection : Nieuwenhuys, 1887.



No. 55.

STUDY OF A YOUTH NAKED WITH WHITE
CLOTH ROUND HIS LOINS AND WITH HIS
HANDS CLASPED IN THE ATTITUDE OF
PRAYER; SEATED ON A CUSHION
PLACED ON A BOX: THREE-
QUARTER FACE TO RIGHT

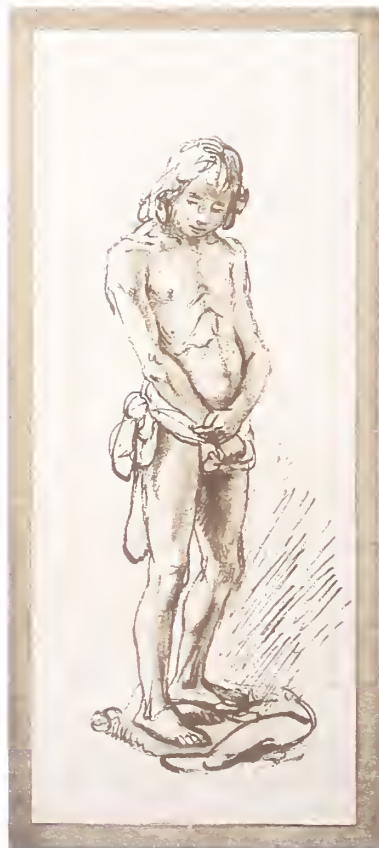
Bistre and Indian ink.

Size, 275 by 161. Arched top.

Michel, 67.

Lippmann, 44.

Collection: Nieuwenhuys.



No. 56.

STUDY OF A YOUNG MAN STANDING
NAKED WITH HIS LEFT
ARM RAISED

Bistre, wash.

Size, 125 by 54.

Michel, 10.

Collection : Utterson.

No. 57.

NUDE STUDY OF A YOUTH STANDING
ON A CUSHION

Bistre, wash.

Size, 205 by 84.

Michel, 5.

Collection : R. P. Roupell.



No. 58.

STUDY OF A NAKED WOMAN SEATED,
HER HEAD RESTING ON HER RIGHT
HAND, SMILING: PROFILE TO LEFT

This powerful study is believed to be a portrait of
Hendrickje Stoffels.

Bistre and Indian ink.

Size, 264 by 185.

Michel, 51.

Lippmann, 91.

Collection: Sir W. W. Knighton, Bart.



No. 59.

STUDY OF A MAN SEATED ON A LOW
STOOL APPARENTLY WARMING HIS
HANDS AT A FIRE: PROFILE
TO LEFT

Bistre.

Size, 137 by 120.

Collection: Earl of Warwick.

No. 60.

STUDY OF AN OLD MAN SEATED IN AN
ARM-CHAIR: IN PROFILE TO RIGHT

Bistre.

Michel, 53.

Collections: Bouverie.
Nieuwenhuys.

Compare the figure of the High Priest in No. 61.



REMBRANDT .

No. 61.

THE PRESENTATION IN THE TEMPLE

Bistre and Indian ink touched with white.

Size, 236 by 250. Arched top.

Michel, 54.

Collections: Sir Thomas Lawrence.

W. Esdaile.

J. W. Brett.

J. de Vos.

Compare No. 60.



No. 62.

THE NATIVITY

Study for the picture in the National Gallery, No. 47.

Bistre, wash.

Size, 203 by 232.

Michel, 37.

Lippmann, 88.

Collections: T. Dimsdale.
Sir Thomas Lawrence.
W. Esdaile.
F. T. Palgrave.



No. 63.

A SHEET OF STUDIES OF NINE HEADS

One in red chalk, the others in bistre.

Size, 222 by 232.

Michel, 42.

Collection : R. P. Roupell.



Rembrandt avec l'habit dans lequel
il avait accoutumé de peindre

No. 64.

PORTRAIT OF REMBRANDT BY HIMSELF:
STANDING FULL FACE WEARING A
HAT WITH HIS ARMS A-KIMBO

Bistre, reed pen.

Below a slip of similar paper to that of the drawing but cut off from it: on this is written—

“Getekent door Rembrant van Rhyn naer syn selves soals hy in syn schilderkamer gekleet was.”

On the mount below, apparently in the handwriting of Huquier, is the translation in French: “Rembrant avec l’habit dans lequel il avoit accoutumé de peindre.”

Size, 188 by 132.

Michel, 40.

Lippmann, 94.

The Lippmann reproduction was copied by the Managers of the Leyden Ter-Centenary Exhibition 1906, and enlarged five-fold as a poster to advertise the show.





No. 65.

STUDY OF A GIRL WITH HER HEAD
LEANING ON HER ELBOW SEATED
AT AN OPEN WINDOW WITH
HER EYES CLOSED

Compare the picture at Stockholm which is dated
1641, and numbered 584.

Size, 116 by 94.

Michel, 70.

Collection : De Vos.

No. 66.

LANDSCAPE. THE MONTALBAENS
TOREN IN AMSTERDAM

Bistre, pen and wash.

Size, 147 by 144.

Michel, 39.

Lippmann, 84.

Collections: J. P. Zoomer.

Sir Joshua Reynolds.

N. Hone.

No. 67.

VIEW OF THE TOWN HALL AT
AMSTERDAM AFTER THE FIRE

Inscribed "vand waech afte sien statsbuis van Am-
steldam doent afgebrandt was den 9 Julij, 1652,
Rembrandt van Ryn."

Bistre, wash.

Compare the picture by Beerestraten in the Museum
at Amsterdam of the same subject but apparently
from the other side.

Size, 150 by 201.

Michel, 66.

Lippmann, 38.

Collections: Dr. Wellesley.

R. P. Roupell.



No. 68.

**JOSEPH PROCLAIMING HIMSELF TO HIS
BRETHREN**

Bistre, wash.

Size, 330 by 212.



No. 69.

STUDY OF A WOMAN SEATED WITH HER
HEAD SUPPORTED BY HER LEFT ARM
AT AN OPEN WINDOW : SHE IS SEEN
FULL FACE FROM WITHOUT

Bistre.

Size, 237 by 176.

Michel, 45.

Collections : Marquis de Vendé.

T. Dimsdale.

Sir Thomas Lawrence.

W. Esdaile.

C. S. Bale.



No. 70.

STUDY OF A WOMAN LOOKING OUT
OF AN OPEN WINDOW

Bistre, largely treated with a coarse brush.

Size, 296 by 162.

Michel, 43.

Lippmann, 92.



No. 71.

PORTRAIT OF AN OLD LADY SEATED
HOLDING AN OPEN BOOK
ON HER KNEE

Study for the picture in the collection of Lady Wantage.

Engraved in C. Rogers' work by W. W. Ryland 1763,
and called Rembrandt's mother.

Size, 127 by 109.

Michel, 48.

Lippmann, 90.

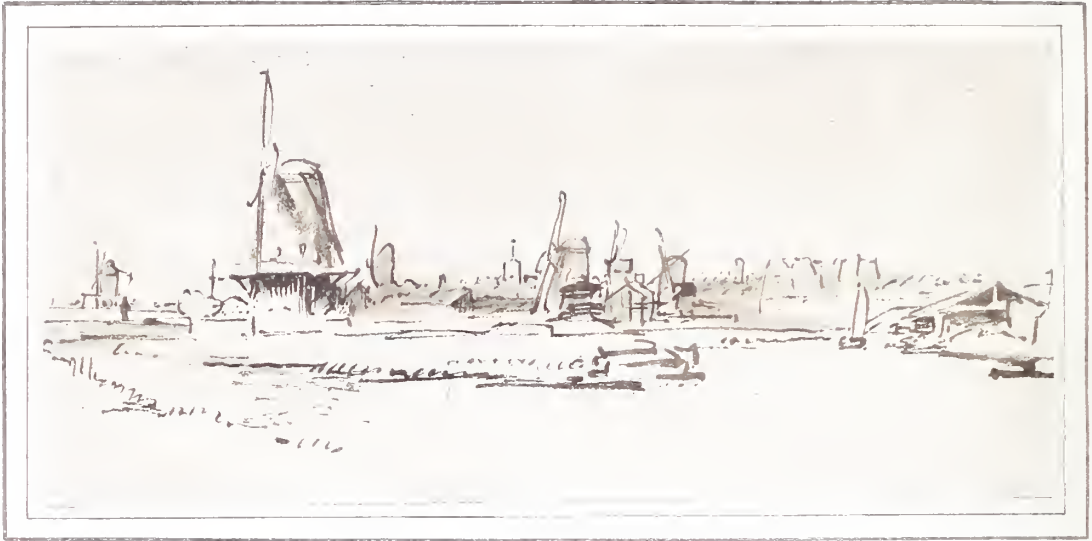
Collections: Richardson.

Sir Joshua Reynolds.

Sir Thomas Lawrence.

W. Esdaile.

C. S. Bale.



No. 72.

A LONG LANDSCAPE WITH MANY
WINDMILLS

Bistre.

Size, 121 by 260.

Michel, 55.
Lippmann.

Collections: Baron Verstolk.
De Vos.



No. 73.

LANDSCAPE WITH A BARN BESIDE A
ROAD, MAN SEATED SKETCHING
IN FOREGROUND

Bistre, wash.

Collection : Sir J. C. Robinson.



No. 74.

LANDSCAPE

Bistre, wash.

Size, 120 by 226.

Michel, 31.

No. 75.

LANDSCAPE

The same place as the subject above.

Bistre, wash.

Size, 160 by 230.

Michel, 30.

Collections: Desperet.
De Vos.





3

No. 76.

LANDSCAPE ON THE BANKS OF
A RIVER

Bistre, wash.

Size, 132 by 314.

Michel, 70.

Collection: Crozat.





No. 77.

WOMAN RECLINING NUDE

Bistre, painted with rough brush.

Size, 138 by 282.

Michel, 51.

Lippmann, 87.

Collections: Sir Thomas Lawrence.

W. Esdaile.

Woodburn.

R. P. Roupell.



No. 78.

MOSES AND THE BURNING BUSH

Bistre, wash.

Size, 242 by 176.

Michel, 74.

An indifferent copy of this drawing is exhibited at the Museum of Grenoble.

Collection : R. P. Roupell.





No. 79.

CHRIST ON THE MOUNT OF OLIVES

Bistre, wash.

Size, 185 by 280.

Michel, 72.

Collection: R. P. Roupell.



No. 80.

STUDY OF NAKED WOMAN SEATED

Bistre, wash.

Size, 287 by 193.

Michel, 50.

Lippmann, 86.

Collections: Lord Spencer.

William Russell.



Chiswick Press : Charles Whittingham and Co.
Tooks Court, Chancery Lane, London.





GETTY CENTER LIBRARY

NC 263 R36 069

c. 2

Original drawings by Rembrandt in the co

MAIN

BKS

Rembrandt Harmenszoo

Original drawings by Rembrandt in the co



3 3125 00340 2159

