

E 97

.6

.C3 C35

LIBRARY OF CONGRESS



0000463178A







7
11
Chemawa, Or. Salem Indian Training School

**SALEM INDIAN
TRAINING SCHOOL
CHEMAWA, OREGON**

**COMPLIMENTS
OF THE
CHEMAWA INDIAN SCHOOL
HARWOOD HALL, SUPERINTENDENT**

THIS BOOKLET WAS PRINTED ENTIRELY WITHIN OUR OWN SHOP

E 97
.6
.C3 C35

Gift
-retention
SEP 20 1918

c
c
c
c
c
c



HON. CATO SELLS
COMMISSIONER OF INDIAN AFFAIRS



HON. EDGAR B. MERRITT

ASST. COMMISSIONER OF INDIAN AFFAIRS



HON. OSCAR H. LIPPS
CHIEF SUPERVISOR OF INDIAN SCHOOLS



SUPT. HARWOOD HALL
CHEWAWA, OREGON

SALEM INDUSTRIAL SCHOOL

CHEMAWA, OREGON

In all of the Northwest, no better location could have been selected for a school than that which Chemawa occupies. Situated as it is, in the very heart of the Willamette Valley, near Salem, the Capital of the state, and widely known as one of the choice cities of the Northwest, this school has every advantage of civilization. Amidst people of culture and refinement, where the interest and sympathy of the good people of the community are with the Indian and his development, the student of Chemawa gets a much-needed help and stimulus in his fight for character and education.

Chemawa has not only the choicest location in Oregon, but also the most desirable site in the famous Willamette Valley. The main line of the Southern Pacific Railway Co. passes directly in front of the campus and that of the Oregon Electric Railway Company also connects Chemawa with Salem and Portland and all parts of the valley in a very convenient way. It would be hard to find more beautiful surroundings.

The wide Willamette River flows but a few miles away and the entire valley is profuse with verdure, trees and flowers. Here and there rise the majestic peaks of snow-clad mountains, such as the famous Mt. Hood, Mt. Helen, etc. Such beauty is a great aid to happiness and contentment and must have an uplifting and refining influence upon any normal person, and particularly is it valuable to the young who are impressionable and whose ideals are in the process of forming.

The climate is very desirable. The winters are mild, and although there is plenty of rain, beautiful sunny days are frequent. The summers are incomparable and the people flock to this part of Oregon from neighboring states because of the delightful weather and beautiful scenery. Hence the health of the school is excellent.

At present the school plant consists of sixty-five buildings, comfortable, large and roomy. The buildings on the beautiful campus, with extensive lawns and a profusion of flowers, trees and shrubs, present a striking picture. In fact one feels like he was living in a large picturesque park.

ACADEMIC COURSES

The academic course takes the student through the first two years of high school. The school is grade 1 in accordance with the new course of study, with especial attention given to the correlation of the classroom with that of the industrial department. After completing the tenth grade, the students who wish to study further, have the privilege of entering high school and business college in Salem, both of which have a broadening influence. Those students desiring normal training may have the opportunity.

BOYS' INDUSTRIES

The facilities for industrial training are excellent. Special attention is given to the industrial courses, which are placed upon an equal plane with the academic. The work is divided into two sections, prevocational and vocational. After having successfully finished the prevocational the student takes up the study of his preferred line of work, which occupation is followed thoroughly until the final step of graduation is reached.

There are several industrial buildings for the boys which include the department of carpentry, painting and cabinet-making, blacksmithing and wagon-making, shoe and harness-making, tailoring and printing. There is also the engineering shop which includes electric, cold storage and ice plant, and boiler house, with its many ramifications. This gives a practical course in steam fitting, electrical engineering, and plumbing. In connection with this work is the steam laundry which also gives practice in engineering and manipulation of machinery. Another important industrial feature is landscape and flower gardening, with ten acres of lawn, flowers and shrubbery, the boys have excellent advantages in landscape gardening, besides getting valuable lessons in horticulture and propagation of plants in the greenhouse. In addition to the foregoing is a modern bakeshop, which supplies all the bread and pastry consumed by the student body.

GIRLS' INDUSTRIES

Corresponding with the boys' industrial buildings is the girls' domestic science hall. Here are the dressmaking department where the girls are taught by professional methods the complete dressmaking

trade, the plain sewing department and the primary sewing. The domestic science cooking department is also in this building. This includes a dining room and kitchen equipped for thorough training in cooking and serving in a scientific as well as a practical manner. The dormitories give training in institutional house-keeping, both of which are very important. Laundering is also emphasized. This is given as a special course called "family washing," in which the work is taught and executed as it would be done in a private family.

The training in the hospital, under a very competent trained nurse, is another very important and popular department. Here the girls take a regularly prescribed course along the same lines as required in a city hospital and on graduating in this work they will be well-qualified nurses.

FARM

The large school farm, consisting of four hundred and forty-one acres, on which agricultural products of all kinds are raised in quantities, including grain, hay, garden truck, berries, fruits, etc., etc., affords a splendid opportunity for agricultural training.

The school dairy, with its herd of high-bred milch cows, not only gives the student practical experience, but also furnishes milk and other dairy products for use in the Institution. Indeed, the school farm is a splendid feature at Chemawa and the training thereon in all details is emphasized.

SOCIAL LIFE

It would be impossible for a school to accomplish its full purpose without advantages for the social life, for this is the toning process that brings out the refined, dignified, gracious young man and woman. Weekly social parties are given. Thanksgiving socials, Christmas parties, football banquet, Valentine party, Washington's Birthday Social, the Senior party to the Juniors, teachers and friends; various industrial functions, reception to the Seniors, both academic and industrial, given by the Superintendent and his wife, and the Commencement Ball. Besides these are the many special functions given in the Domestic Science Hall, the gymnasium and other places. These diversions are not in excess and tend greatly to maintain a feeling of contentment among the young people.

MUSIC

The element of music touches the school life throughout. There is an excellent brass band of boys as well as a mandolin and guitar club composed of girls, an octette, glee clubs and a choir. Chemawa is also very proud of her orchestra, consisting of a large number of various instruments.

LITERARY SOCIETIES

As a part of the academic course, and yet as a special advantage, are the literary societies. They serve a double purpose to bring forward the individual and to lend an interesting feature to the school.

ATHLETICS

No school is complete without athletics. At Chemawa the boys have an association which includes football, baseball and various field sports, and which all are privileged to join. The girls have the popular games of basketball and tennis.

SCHOOL PAPER

The Chemawa American is an important adjunct to the school and each week reflects the doings of the student body and school generally. Pupils, under a trained printer, do the mechanical work. The paper is a credit to the school and is a strong factor in molding the character of the pupils and an impetus to their progress. The sheet endeavors to inculcate in the Indian youth a genuine patriotism.

CONCLUSION

Let it be briefly repeated that the Salem Industrial School, in the very advantage of its location, offers the Indian boy and girl that environment which is a great help in their development, and in its educational plan aims to make well rounded, cultured, independent, self-supporting citizens among the citizens of their own country, capable of appreciating and enjoying its highest blessings.

Indian pupils of Alaska, or the United States, of proper age and advancement and health are eligible for entrance. Those on reservations should make application to the Agent or Superintendent, and through him arrange for transportation. Those not on reservations, and in Alaska, may apply direct to: HARWOOD HALL, SUPERINTENDENT, CHEMAWA, OREGON.



HON. BEN W. OLCOTT

GOVERNOR OF OREGON AND FRIEND TO THE INDIAN



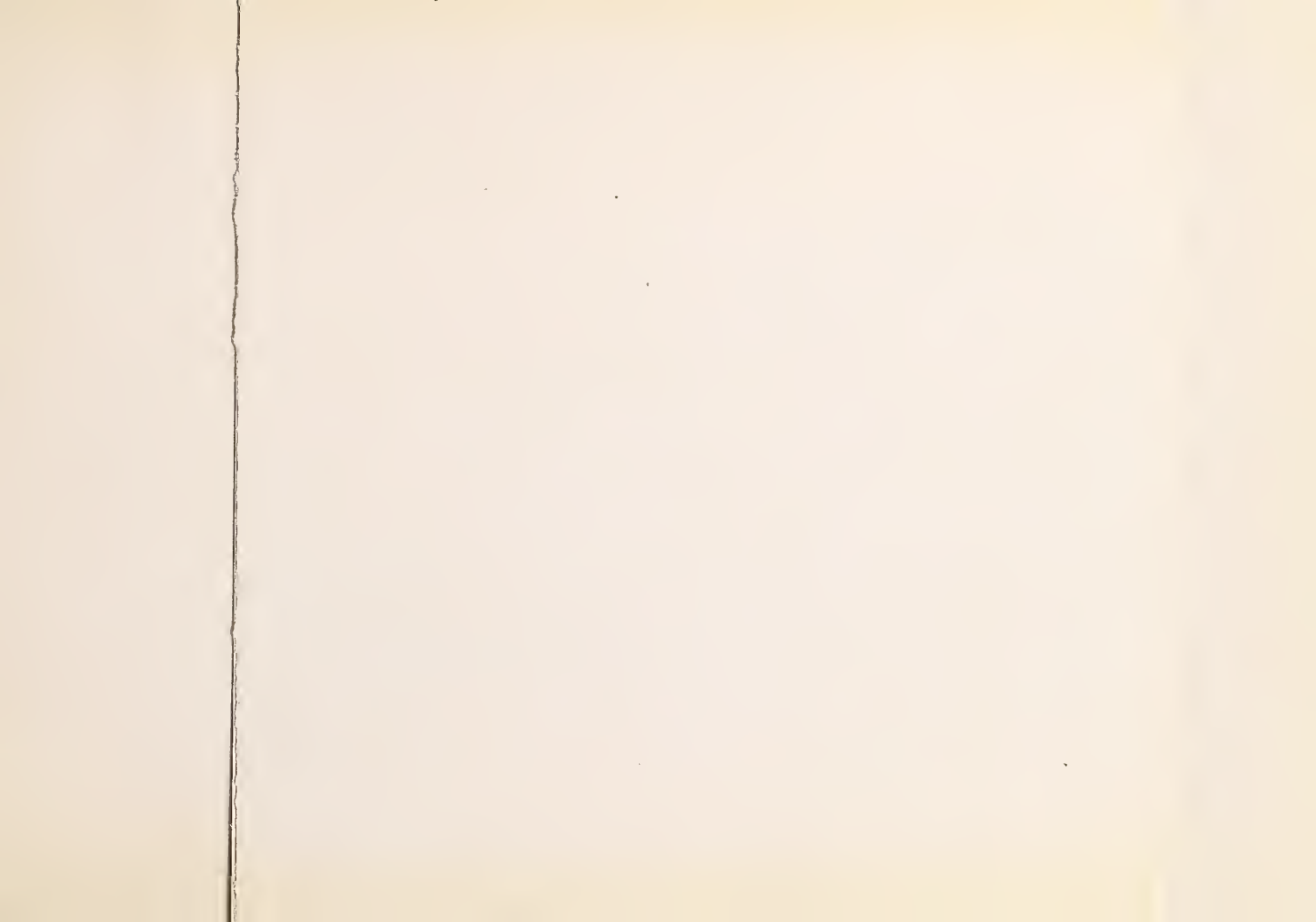
STATE CAPITOL



FOUNTAIN—STATE HOUSE GROUNDS



MARION COUNTY COURTHOUSE





PANORAMIC VIEW OF CHEMAWA INDIAN SCHOOL.



OFFICE

SUPERINTENDENT'S RESIDENCE



THE WILLAMETTE RIVER



AN OREGON BRIDGE



MINUET NUMBER—NONPAREIL PROGRAM



MCBRIDE HALL—GIRLS' DORMITORY (100 Girls)



STATE SUPREME COURT BUILDING



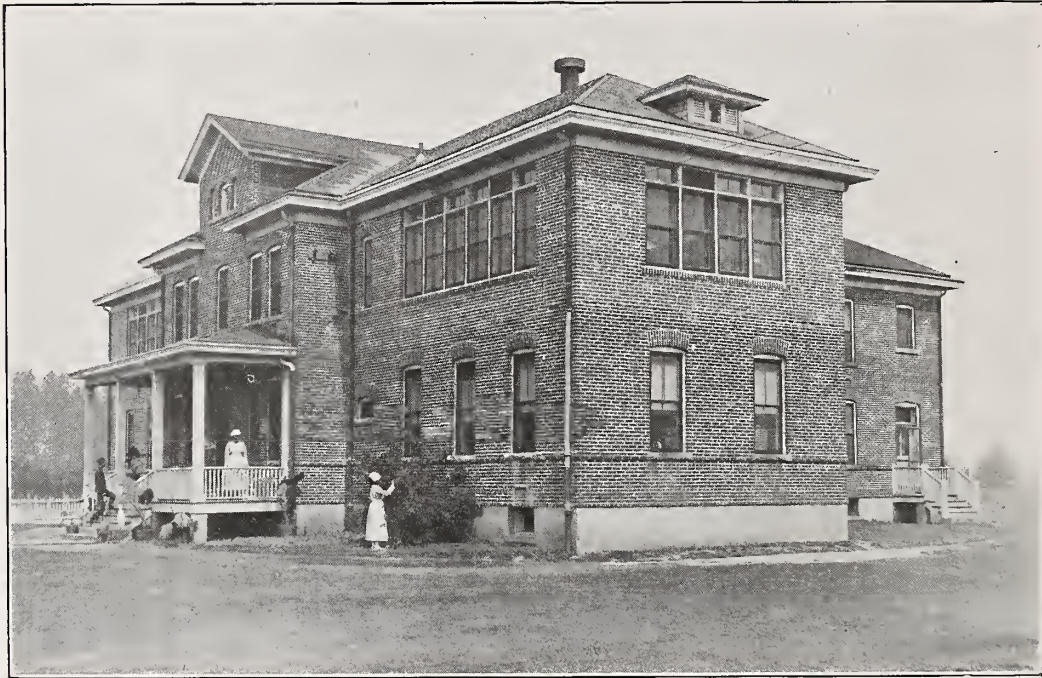
SALEM HIGH SCHOOL



MITCHELL HALL—BOYS' DORMITORY



PREVOCATIONAL SEWING DEPARTMENT



HOSPITAL



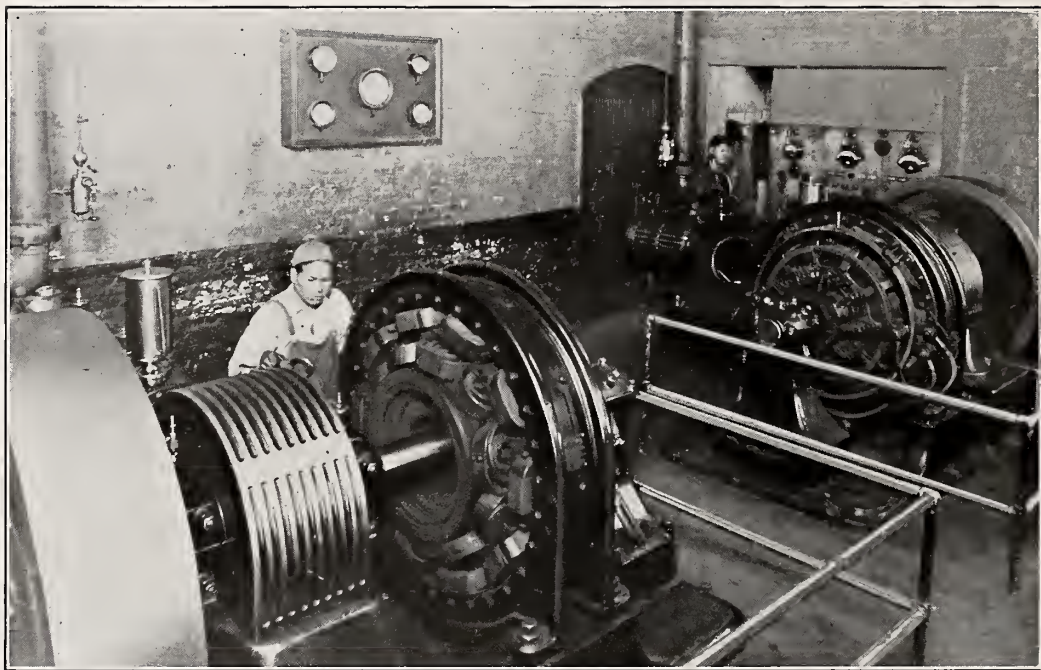
AUDITORIUM AND ACADEMIC BUILDINGS



BLACKSMITH SHOP



GIRL'S ROOM—MCBRIDE HALL



ELECTRIC GENERATORS



GIRLS' PARLOR—MCBRIDE HALL,



BOYS' ROOM—MITCHELL HALL



FRONT ENTRANCE—MITCHELL HALL.



BOYS' ROOM—MITCHELL HALL



GIRL'S ROOM—MCBRIDE HALL



CLASS IN GYMNASIUM



SMALL BOYS' DORMITORY



DRESSMAKING DEPARTMENT



GIRLS' PARLOR—WINONA HALL



ONE OF ELEVEN CLASSROOMS



ART NEEDLEWORK AND TROPHIES



CARPENTER SHOP



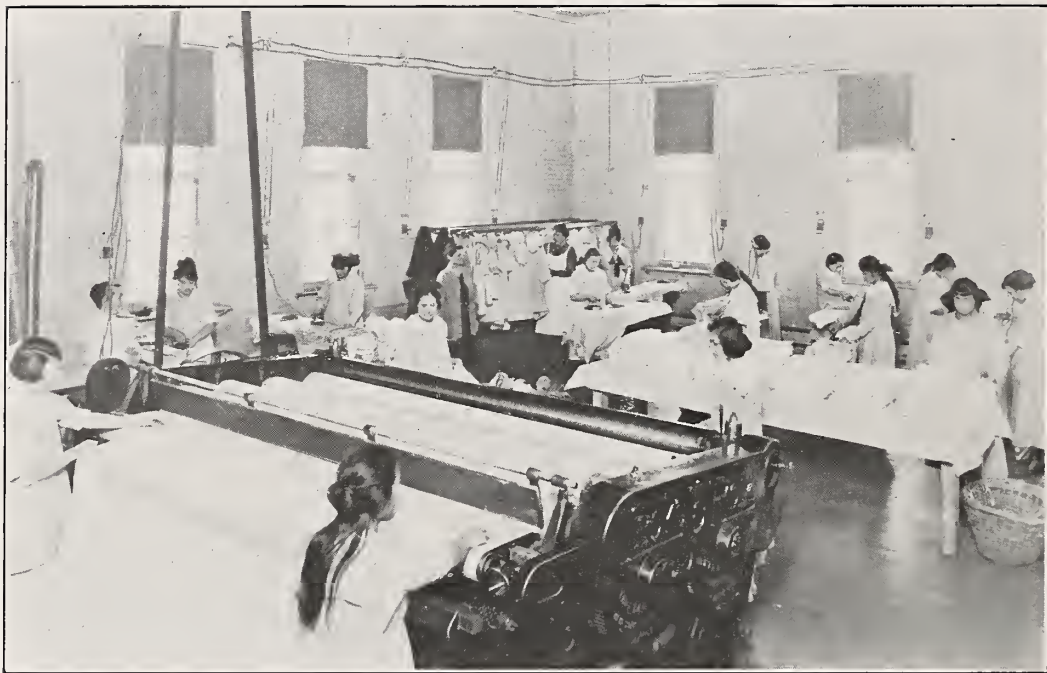
WASH AND DRY ROOM—LAUNDRY



THE BAKERY



BASKETBALL TEAM



IRONING ROOM—LAUNDRY



DAIRY BARN



ACADEMIC BUILDING



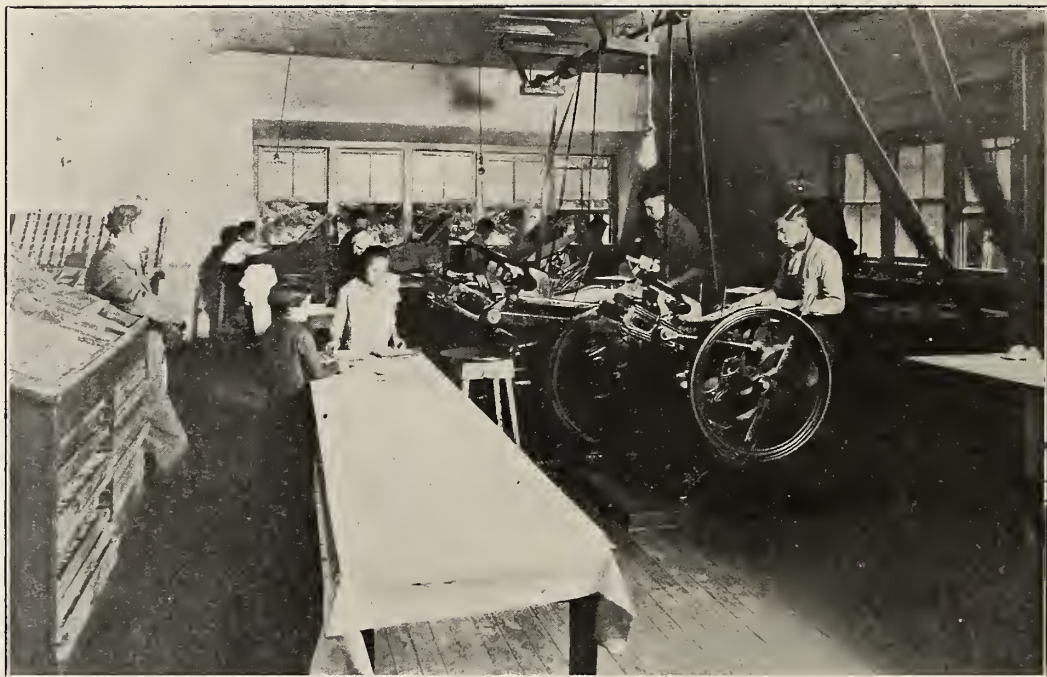
GREENHOUSE



NORMAL, CLASS—PUPIL TEACHERS



SIGMA PHI DELTA SOCIETY



PRINTING OFFICE



FOOTBALL TEAM



FRUIT ROOM



VOCATIONAL NURSES



TAILOR SHOP



BOILER ROOM



GIRLS' INDUSTRIAL BUILDING



WINONA HALL,—GIRLS' DORMITORY (200 Girls)



HARNESS SHOP



INDIAN CLUB DRILL



WINONA LITERARY SOCIETY



PAINTER'S DETAIL,—GYM



OFFICERS OF BOYS' BATTALION



EXCELSIOR LITERARY SOCIETY (In Part)



BASEBALL TEAM



TRACK TEAM



GRADUATES—1919



MCBRIDE HALL, GIRLS (In Part)



RELIANCE LITERARY SOCIETY



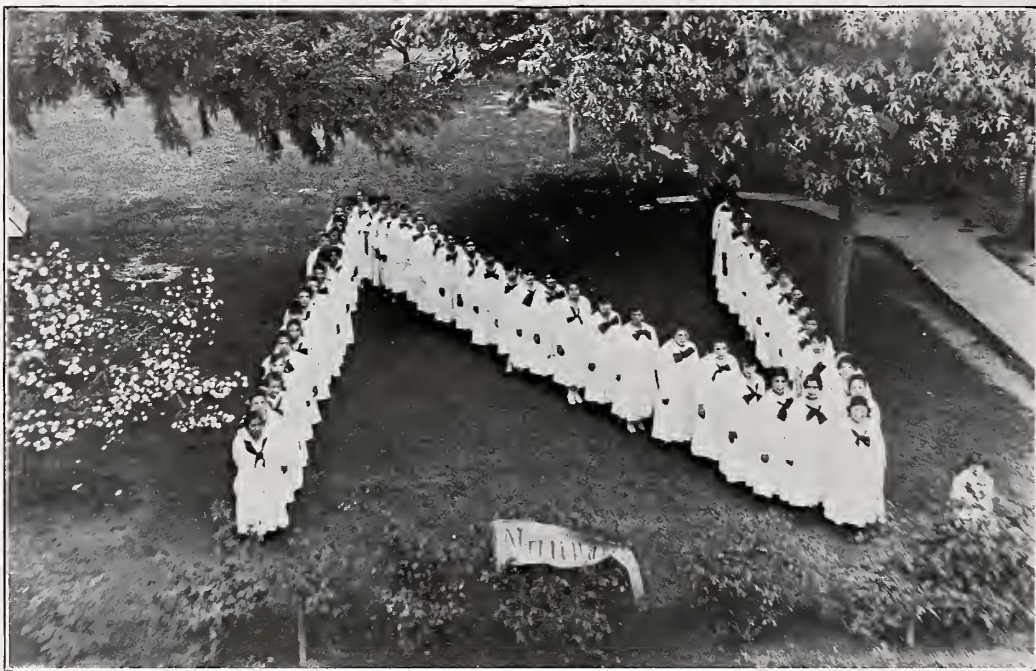
PRUNE ORCHARD



GRADUATES—1918



SMALL BOYS' BAND



NONPAREIL LITERARY SOCIETY



COLUMBIA RIVER HIGHWAY



MANDOLIN AND GUITAR CLUB



SCIENCE LABORATORY



FEDERAL BUILDING—SALEM



HIGHWAY TUNNEL



SCENE FROM MANDOLIN CLUB RECITAL



PIGGERY



DOMESTIC SCIENCE KITCHEN



STUDENTS' KITCHEN



MOUNT HOOD



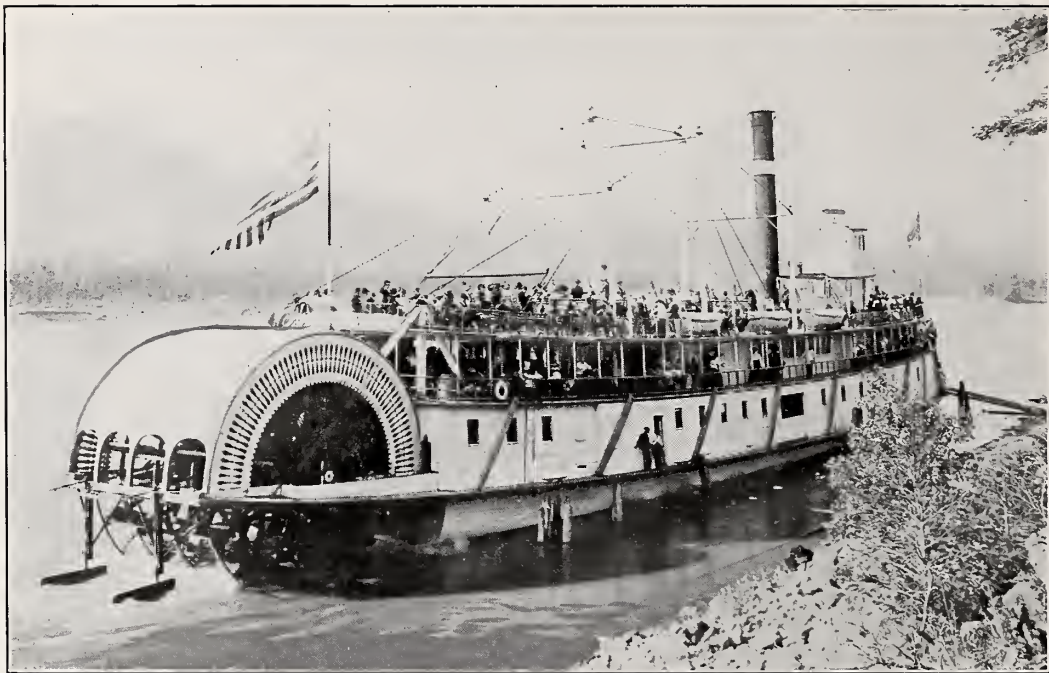
BIRDS EYE VIEW—CAPITOL GROUNDS



RIFLE DRILL



POWER HOUSE



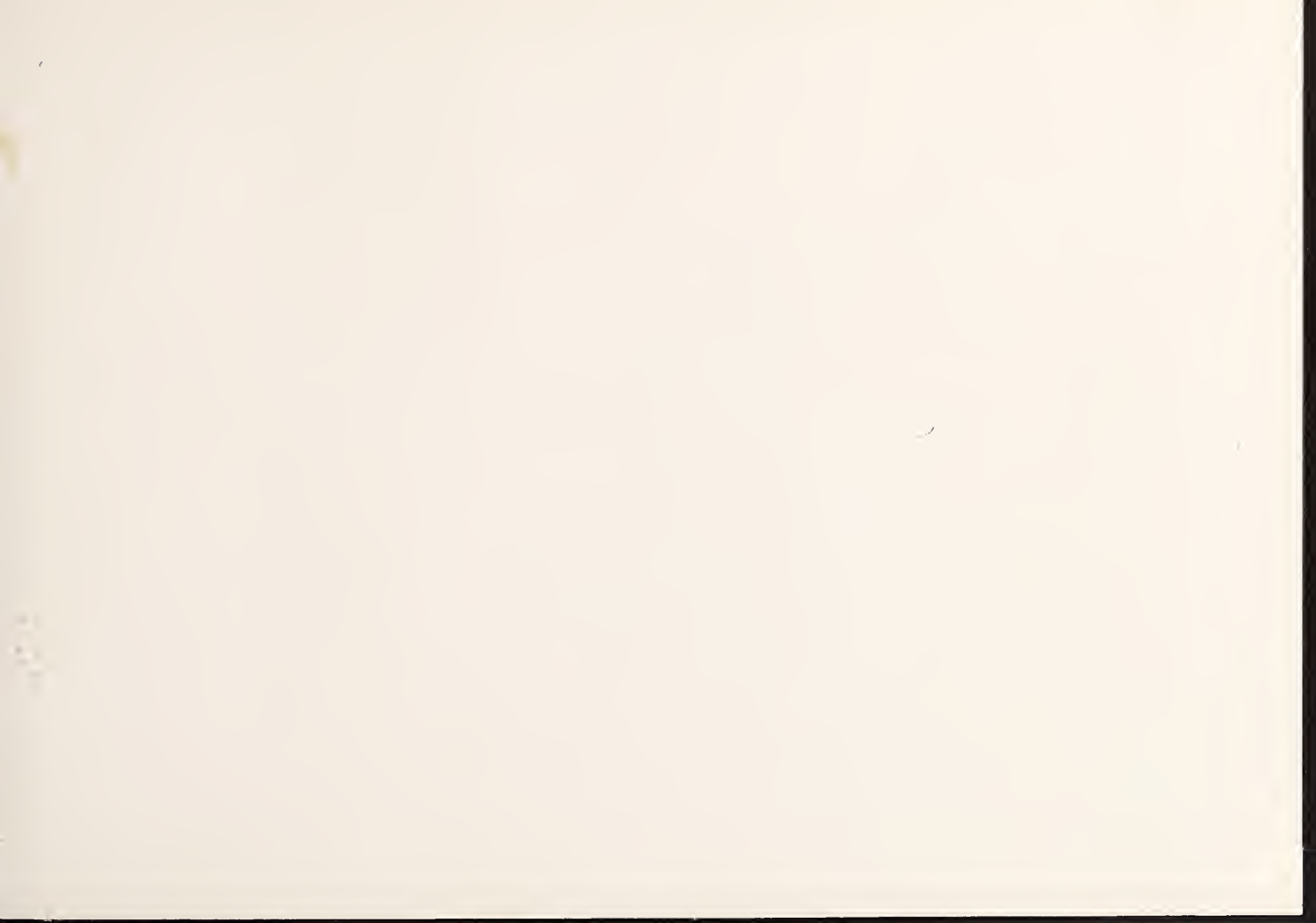
STEAMER ON THE WILLAMETTE

BC 105

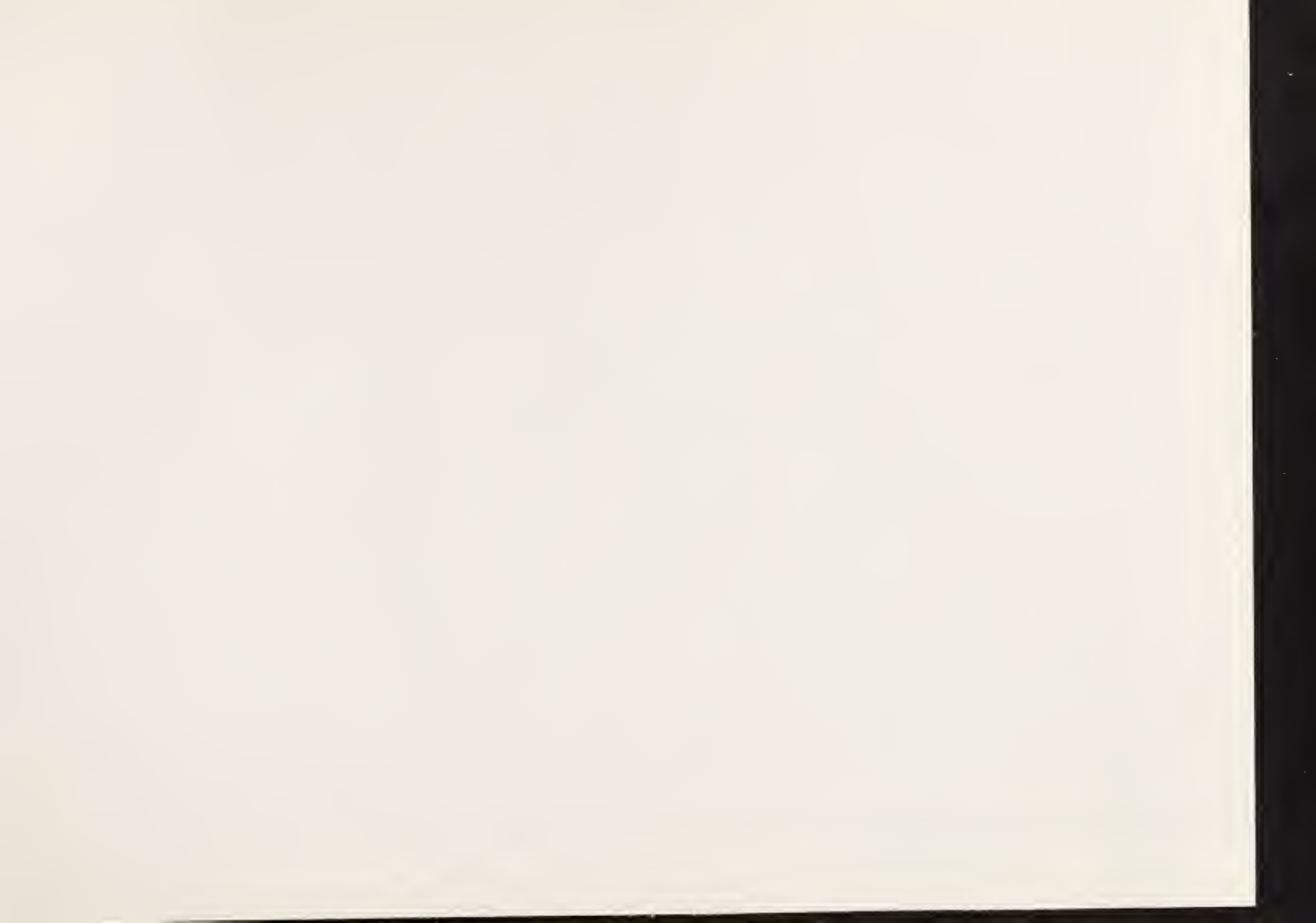


BASKETBALL TEAM











DOBS BROS.
LIBRARY BINDING

ST. AUGUSTINE
FLA.

32084

