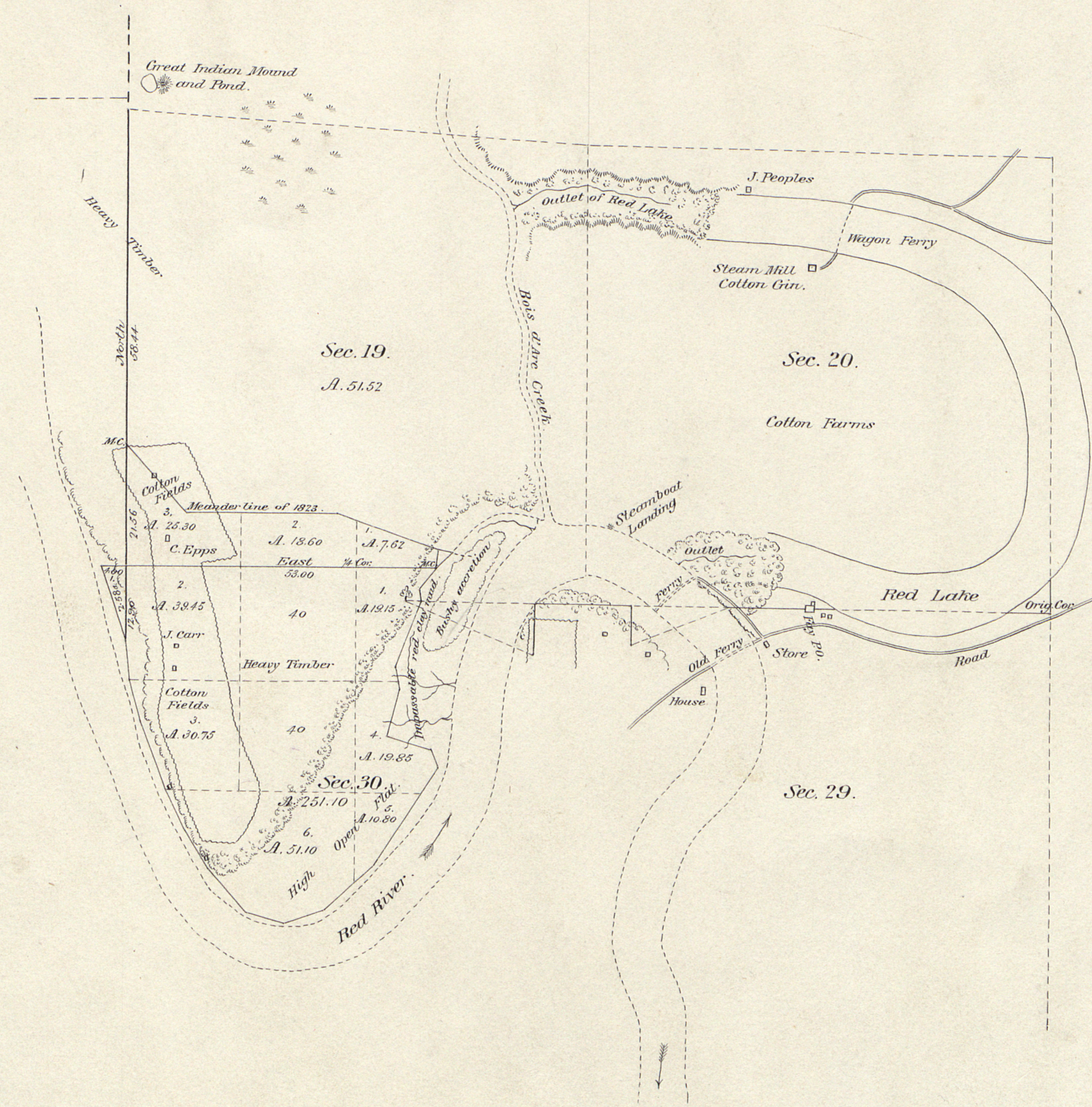


*Plat of Supplemental Survey
of Lands erroneously omitted from Original Survey in 1823,
In Secs. 19 and 30, T_p. 14 S., R. 25 W.
5th Prin. Mer. Arkansas.
Surveyed by A.W. Barber, U.S. Surveyor, Dec. 3rd to 8th 1899.
under instructions dated Oct. 27, 1899.
Scale 20chs = 1 inch.*



*Posted June 13, 1900
by S.E.V.D.*

C.S.D.B

I hereby certify that the above is a plat made in accordance with Section 2219 U.S. Revised Statutes, of lands omitted from original survey, in Secs. 19 and 30, T_p. 14 S., R. 25 W., 5th Prin. Meridian, Arkansas, surveyed by A.W. Barber, U.S. Surveyor, Dec. 3rd to 8th 1899, under instructions dated Oct. 27, 1899, and is strictly conformable to the field notes on file in this office, which have been examined and approved.

DEPARTMENT OF THE INTERIOR,
*General Land Office,
Washington, D.C. May 12th 1900,*

Rings Hannan
*Commissioner and ex-officio
U.S. Surveyor General for Arkansas.*