

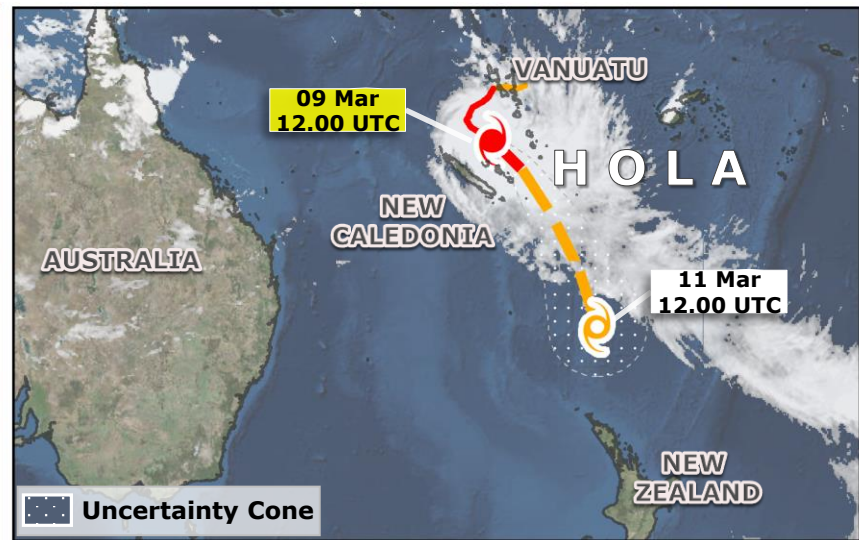
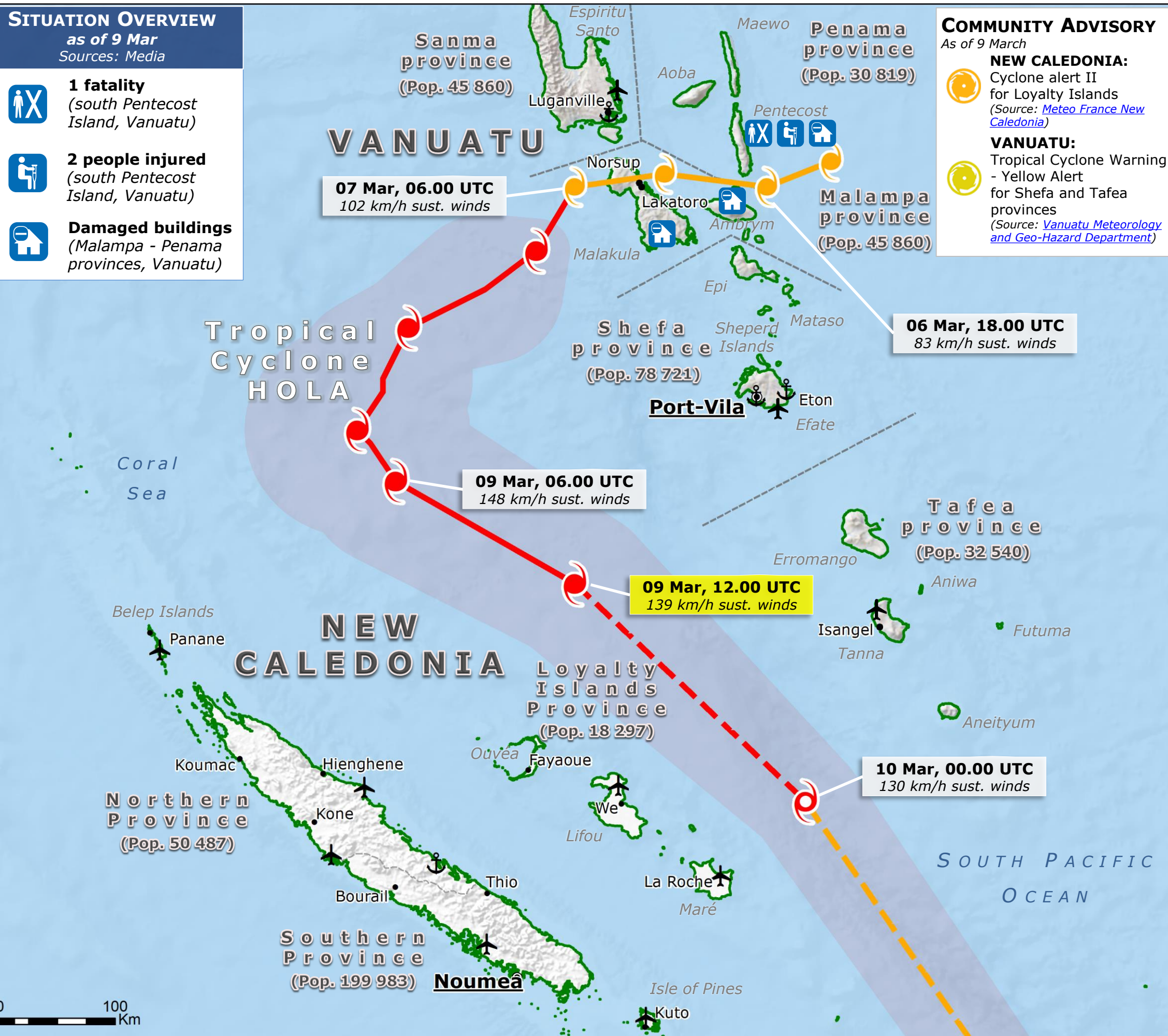
# Vanuatu, New Caledonia | Tropical Cyclone HOLA

## SITUATION OVERVIEW as of 9 Mar Sources: Media

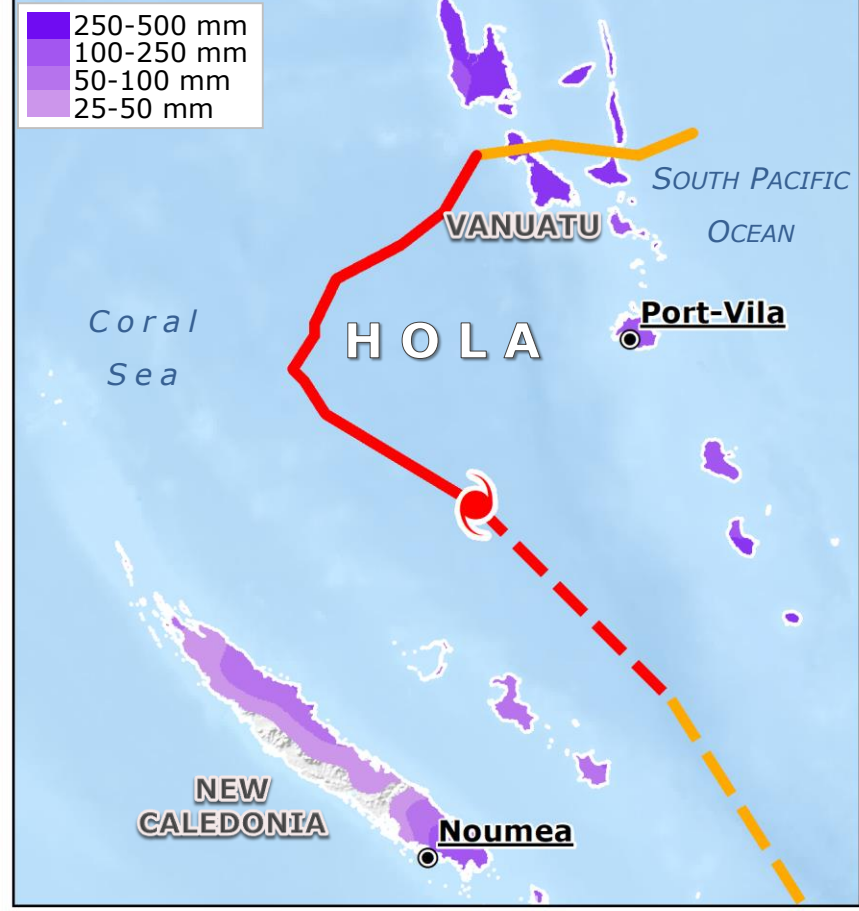
- 1 fatality**  
(south Pentecost Island, Vanuatu)
- 2 people injured**  
(south Pentecost Island, Vanuatu)
- Damaged buildings**  
(Malampa - Penama provinces, Vanuatu)

## COMMUNITY ADVISORY As of 9 March

- NEW CALEDONIA:**  
Cyclone alert II for Loyalty Islands  
(Source: [Meteo France New Caledonia](#))
- VANUATU:**  
Tropical Cyclone Warning - Yellow Alert for Shefa and Tafea provinces  
(Source: [Vanuatu Meteorology and Geo-Hazard Department](#))



## RAINFALL ACCUMULATION OVER 6-15 MAR Sources: NASA/GPM (Past) – NOAA/GFS (Forecast)



|                         |  |
|-------------------------|--|
| <b>TROPICAL CYCLONE</b> | <b>WIND BUFFER</b>                     |
| Observed position       | > 118 km/h                             |
| Forecast position       |  |
| <b>INTENSITY</b>        | <b>STORM SURGE</b><br>JRC, METEO: HWRF |
| > 118 km/h              | <1 m                                   |
| 63 - 118 km/h           | Airport                                |
| <b>TRACK</b>            | Port                                   |
| Current                 | Province boundary                      |
| Forecast                |  |

