

Historic, archived document

Do not assume content reflects current scientific knowledge, policies, or practices.

62.47

PRICE LIST

for

FALL 1933

NEW HAVEN NURSERIES

(J. Bagby & Sons Co.)

NEW HAVEN - MISSOURI

RETURN POSTAGE GUARANTEED

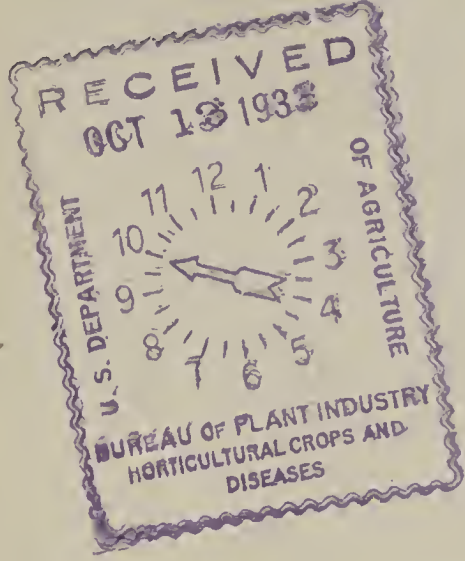
Sec. 562 P. L. & R.
U. S. POSTAGE

PAID

New Haven, Mo.
Permit No. 1

LIBRARY
RECEIVED
★ OCT 17 1933 ★

J. S. Department of Agriculture,



Hort. Crops & Disease,
U. S. Dept. of Agri.,
Washington, D. C.

THE WAY WE DO BUSINESS WITH YOU

Terms CASH, unless otherwise agreed upon. ALL ORDERS TO BE SENT C. O. D. MUST BE ACCOMPANIED BY ONE-FOURTH THE AMOUNT IN CASH. Remit by Money Order, Cash or Check. When cash is sent be sure to Register the letter.

Order Early It is important that you order early. For the benefit of customers who wish to order early, but do not care to spare all of the money when the order is sent, we will accept early orders IF 10 PER CENT OF THE AMOUNT is sent with order, and we will reserve the stock for you. Balance to be sent when you order the stock shipped.

Directions for Ordering Write name and address plainly. Always state distinctly the sizes and grades of stock ordered as per the grades given in this list. When varieties named cannot be furnished, we reserve the right to substitute such varieties as will fill the season as nearly as possible, unless prohibited in the order. If we make mistakes, they are accidental, and we wish to right them.

Prices The prices in this list are for the goods F. O. B. New Haven, Missouri.

15% additional must be sent when you wish your stock shipped by parcel post. Any amount not used for prepaying packages will be refunded. If no money is sent for postage, then shipment will go by express COLLECT. Owing to postal regulations trees larger than 3 to 4 feet cannot be sent by parcel post. Write for special quotations on larger quantities than indicated in this list.

Packing All goods are packed free. Notwithstanding this fact, we use the utmost care and pack all orders, large or small, according to the distance and our customers' best interests. Everything is correctly labeled.

Our Guaranty We use the greatest care possible to have our stock true-to-name, and should any prove not true, we stand ready to replace it free of charge, or to refund the purchase price but it is mutually agreed between the purchaser and ourselves that we shall not at any time be held responsible for any sum greater than the amount originally paid for said stock. We guarantee stock to reach customers in good condition.

All shipments will be accompanied by Certificate of Inspection of the State Entomologist. Good stock, true-to-name, sold direct to the planter at reasonable prices is our aim.

We solicit correspondence and personal inspection of our stock, confident that it will compare favorably with the best.

Our Location NEW HAVEN is on the Missouri Pacific railroad and also on the Missouri River, sixty-seven miles west of St. Louis. Our soil is the very best for producing well-ripened stock with splendid roots. Our facilities for prompt shipments are first class.

NOTICE

You will note that our prices for Nursery Stock for this Fall have been greatly reduced while almost everything else has gone up in price.

Owing to the fact, however, that our expenses are sure to increase by next Spring, and we will also be forced to increase our prices, we urge our friends and customers to buy their Nursery Stock this Fall.

If you do not want to plant this Fall but wish to secure these prices, we will accept orders at Fall Prices for Spring delivery if you will send 25% of the amount with your order, balance to be paid in the Spring.

Orders must reach us not later than December 1st.

Write for Special Prices

APPLES



The Apple is a real money-maker. By planting judicious selections of summer, fall and winter sorts, a constant succession of this most desirable fruit will be obtained. Our stock of apples is exceptionally good this season. All of our apples are grown on Missouri River upland, on well-branched whole roots, smooth, clean, and well-grown in every respect.

No better trees can be bought for any price.

PRICES

	Each	10	50	100
Two-year, extra select5 to 6 ft.	30c	\$2.75	\$12.50	\$22.00
Two-year, first class...4 to 5 ft.	25c	2.25	10.00	18.00
Two-year3 to 4 ft.	22c	2.00	8.50	15.00

GRIMES GOLDEN—DOUBLE WORKED

	Each	10	50	100
One-year4 to 5 ft.	35c	\$3.25	\$15.00	\$27.50
One-year3 to 4 ft.	30c	2.75	12.50	22.00

SUMMER APPLES

Benoni. Red striped; flesh yellow and tender.

Carolina Red June. Red; flesh white.

Duchess. Large yellow; streaked with red.

Early Harvest. Bright straw color; flesh white.

Liveland Raspberry. White striped and marbled crimson. Flesh white; blooms late; bears young.

Yellow Transparent. Yellow skin; white flesh. A fine apple.

FALL APPLES

Golden Sweet. Large pale yellow. Very sweet.

Grimes Golden. Medium size; golden yellow; flesh tender, mild sub-acid. The best fall apple.

Grimes Golden (Double Worked). Same as Grimes Golden but budded on stock resistant to collar rot.

Maiden Blush. Yellow with red blush. Bears large crops.

Wealthy. Red skin; white flesh. An early bearer.

on Large Quantities of Stock



WINTER APPLES

Ben Davis. Red striped; white flesh.

Delicious. Fruit large, nearly covered with red. Fine-grained, crisp and juicy; of fine quality.

Gano. Red cheek on yellow ground; flesh white.

Geneton. Greenish-yellow, striped with red, rich and juicy.

Golden Winesap. Large, yellow with pink blush. Good keeper.

Huntsman Favorite. Golden-yellow with red cheek.

Ingram. Striped bright red; flesh greenish-yellow.

Jonathan. Fruit a brilliant glossy red with spicy rich acid flavor. Succeeds everywhere.

Mammoth Black Twig. Large deep red apple. A fine-growing tree and a good keeper.

Northwestern Greening. Smooth yellow skin, good size.

Rome Beauty. Large yellow, shaded with red.

Stayman Winesap. Fruit large deep red. A heavy producer.

Winesap. Fruit a deep red color, fine flavor and keeps exceedingly well if put in a cool place. It is of medium size and is always in demand.

Winter Banana. Large pale yellow; pink blush.

York Imperial. Large smooth yellow, shaded red, with indistinct red stripes.

CRAB APPLES

Transcendent. Yellow, striped with red. Fine for cooking.

Whitney. Large glossy green, splashed with carmine.

WE GUARANTEE SATISFACTION in quality and condition of the goods on ARRIVAL, and our guaranty means that you can get your money back or other stock for unsatisfactory goods reported rejected when received and held for our order.

You Should Plant An Assortment of These Healthy True to Name Peach Trees



Plant the proper peaches and realize good profits from your work. Our peaches are "the proper peaches" to plant because they are stocky, nicely headed with smooth, straight bodies, are well-rooted, and free from all disease. We are headquarters for true-to-name trees and can supply them to you at BARGAIN PRICES.

PRICES

	Each	10	50	100
4½ to 6 feet; extra select.....	35c	\$2.25	\$10.00	\$18.00
3½ to 5 feet; first class.....	22c	2.00	9.00	16.00
2½ to 4 feet, medium.....	20c	1.75	7.50	12.00
2 to 3 feet; small.....	17c	1.50	5.50	9.00

EARLY

- Alexander.** White freestone. Early in July.
- Carman.** White semi-cling. Last of July. Hardy; large. About three weeks earlier than Elberta.
- Greensboro.** White freestone. Last of June.
- Hiley.** White freestone. Last of July.
- Mayflower.** Red semi-cling. Very early; about June 20th.
- Red Bird Cling.** White clingstone. July.

MID-SEASON

- Belle of Georgia.** White freestone. August.
- Captain Ede.** Yellow freestone. August.
- Champion.** Creamy-white freestone, with red cheek. Beautiful appearance. Rich and juicy. August 15th.
- Crawford's Early.** Yellow freestone. Last of July.
- Crawford's Late.** Yellow freestone. Last of August.
- Chinese Cling.** White clingstone. August.

are Extra Good

- Early Elberta.** Yellow freestone. August.
- Elberta.** The very finest yellow freestone in cultivation. An excellent shipper. Ripens the latter part of August.
- Elberta Cling.** Yellow clingstone. August.
- J. H. Hale.** Yellow freestone. Ripens a few days later than Elberta, and larger. Productive and a good shipper.
- Mamie Ross.** White freestone. August.
- Miller Cling.** White clingstone. August.
- Rochester.** Yellow freestone. August.
- Old Mixon Cling.** White cling. Large, white flesh, with deep red cheek; rich and good; one of the best. August.
- South Haven.** A large yellow freestone. Heavy bearer and very hardy. Early in August.

LATE

- Gold Dust Cling.** Yellow clingstone. September 1st to 10th.
- Heath Cling.** White clingstone. September 15th.
- Henrietta.** Yellow clingstone. September 25th.
- Indian Blood Cling.** Red to the seed. Medium size. September.
- Krummel.** Yellow freestone. September 10th to 25th.
- October Beauty.** Yellow clingstone. Last of September.
- Ringgold Cling.** White clingstone. September. Improved Heath Cling.
- Stump.** White freestone. September.



DO NOT WAIT TO SEND IN YOUR ORDER. DO IT NOW, and be sure of getting just the varieties and sizes that you want. We will not ship out your order until the proper season for planting in your locality unless you give a certain shipping date.

After Making Out Your Order



PLUM

A few plum trees should be included in every home and commercial orchard. They are easy to grow and will thrive and bear well in almost any type of soil. Plum trees do very well in chicken yards.

PRICES

	Each	10	50	100
Extra select.....5 to 6 ft.	30c	\$2.75	\$12.50	\$22.00
First class.....4 to 5 ft.	25c	2.25	10.00	18.00
Medium3 to 4 ft.	22c	2.00	8.50	15.00

America. Glossy red. Heavy cropper at an early age. Medium size. Ripens in August.

Abundance. Large purplish-red. Quality the very best. Early in July.

Black Beauty. Large. Very dark purple, almost black when fully ripe. Flesh yellow. Flavor of damson when cooked. Ripens in June.

Burbank. Large clear cherry-red, thin lilac bloom. Flesh yellow. Extra fine quality. Last of July.

German Prune. Skin dark purple; yellow flesh. Very large. August.

Red June. Vermilion-red. Productive. Fair size. Ripens in July.

Shropshire Damson. Similar to Common Damson but larger. Dark purple skin, with yellow flesh. Very productive. September.

Wild Goose. Medium size. Bright red skin; yellow flesh. Abundant cropper. Tree long-lived. Ripens in July.

APRICOT

PRICES

	Each	10	50	100
Extra select.....4½ to 6 ft.	30c	\$2.75	\$12.50	\$22.00
First class.....3½ to 5 ft.	25c	2.25	10.00	18.00
Medium2½ to 4 ft.	22c	2.00	8.50	15.00

Moorpark. Large orange color. Red cheek. Firm and juicy. July.

Superb. Ripens early. Fruit medium size; salmon-color. Good quality. Hardy and productive.

Royal. Yellow with red cheek. Hardy. Abundant bearer. June.

Please Give this List to a Friend

CHERRY

Everyone should have a few cherry trees. The sour cherries do not grow large and can be planted in almost any back yard. Be sure to select a location, however, that is well drained, as sour cherry trees cannot stand "wet feet." Sweet cherries thrive anywhere, and in addition to their wonderful crops of fruit, make excellent shade trees as they are tall, upright growers.

PRICES

	Each	10	50	100
2-year extra select 4½ to 6 ft.	40c	\$3.75	\$17.50	\$32.00
2-year first-class.....3½ to 5 ft.	35c	3.25	15.00	28.00
2-year medium.....2½ to 4 ft.	30c	2.75	12.50	22.00

Black Tartarian. Black, sweet cherry Large. Meaty, productive. June.

Belle de Choisy. Large red, semi-sweet. Ripens in clusters. June.

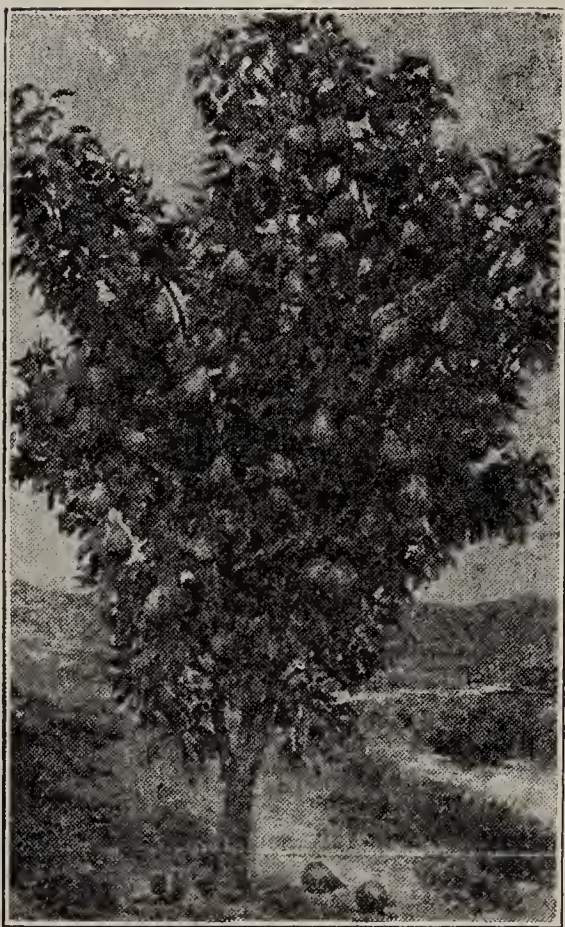
Early Richmond. Bright red; sour cherry. Medium size. Ripens first of June.

Gov. Wood. White, sweet cherry. White skin; pink cheek. Large. Early June.

Magann. Black, sweet cherry. Medium size. Tree long-lived and makes a fine shade tree. June.

Montmorency. Large dark red, sour cherry. Very meaty, juicy, and succeeds everywhere. Middle of June.

PEAR



The pear is a thrifty, upright grower and will bear heavy crops even when planted in sod or heavy clay.

PRICES

2-year Extra Select 5 to 7 ft.

Each.....	\$.40
10.....	3.75
50.....	17.50
100.....	32.00

2-year First-class 4 to 5 ft.

Each.....	\$.35
10.....	3.25
50.....	15.00
100.....	28.00

1-year Whips 3 to 4 ft.

Each.....	\$.30
10.....	2.75
50.....	12.50
100.....	22.00

Kieffer. Fine large pear; fine flavor and quality. Trees most blight resistant. October.

Garber. Fruit large, bright yellow, with red cheek. Fine for canning. September.



GRAPE VINES

Two-year, No. 1.	Each	10	50	100
Concord. Black.....	15c	\$1.20	\$5.00	\$8.00
Moore's Early. Black.....	20c	1.75	7.50	12.00
Worden. Black.....	20c	1.50	6.00	10.00
Catawba. Red.....	20c	1.50	6.00	10.00
Deleware. Red.....	20c	1.75	7.50	12.00
Niagara. White.....	20c	1.50	6.00	10.00

BERRIES & MISC.

	Each	10	50	100
DEWBERRY. Lucretia.....	50c	\$2.25	\$4.00
BLACKBERRY. Early Har- vest, Snyder.....	50c	2.25	4.00
Mercereau.....	55c	2.50	4.50
BLACK RASPBERRY. Cum- berland, Plum Farmer.....	40c	1.50	2.75
RED RASPBERRY. Cuthbert Latham.....	45c	1.75	3.00
.....	50c	2.25	4.00
GOOSEBERRY. Houghton, Downing.....	15c	\$1.25	5.00
CURRENT. Fays Prolific, Red Dutch.....	15c	\$1.25	5.00
RHUBARB (Victoria).	8c	70c	3.00

CLIMBING VINES

	Each	10
BOSTON IVY. Two-year, No. 1.....	45c	\$4.00
CLEMATIS PANICULATA. White.....	35c	3.00
CLEMATIS JACKMANII. Purple.....	60c	5.00
HONEYSUCKLE (Hall's Japan). White to yellow.....	35c	3.00
WISTERIA. Two-year, No. 1, purple.....	45c	4.00

Stock for Over 60 Years

SHADE & ORNAMENTAL TREES



Shade trees are very easily grown as they require very little attention after they are planted. The planting of trees around your home is the best investment you can make. Do it now.

CATALPA (Speciosa). 30 to 35 feet. Hardy Catalpa. Excellent for post timber as it is very resistant to rot.

Write for special prices on larger quantities.

	Each	10	50	100
8 to 12 feet.....	25c	\$2.25	\$10.00	\$17.50
6 to 8 feet.....	20c	1.75	7.50	13.00

ELM (American). 60 to 100 feet. A native tree of large size. Wide-spreading head and graceful drooping branches. A hardy grower. One of the best park and street trees.

	Each	10
8 to 10 feet.....	80c	\$7.00
6 to 8 feet.....	70c	6.00

ELM (Chinese). 50 to 60 feet. A hardy, rapid grower. Slender branches, compact habit of growth with small attractive leaves.

	Each	10
8 to 10 feet.....	90c	\$8.50
6 to 8 feet.....	80c	7.50

MAPLE (Soft). 60 to 80 feet. A native tree of very rapid growth. Hardy everywhere and easily transplanted.

	Each	10
8 to 12 feet.....	60c	\$5.00
6 to 8 feet.....	50c	4.50
4 to 6 feet.....	45c	4.00

POPLAR (Lombardy). 60 to 80 feet. A tall, rapid grower. Always makes a striking feature in any landscape.

	Each	10
10 to 12 feet.....	50c	\$4.50
7 to 10 feet.....	45c	4.00
5 to 8 feet.....	40c	3.50

PUSSY WILLOW. 10 to 15 feet. Very popular for ornamental purposes, because of the attractive catkins formed on the branches early in the spring.

	Each	10
2 to 3 feet.....	40c	\$3.50

Make Your House a Home

ORNAMENTAL SHRUBBERY

A few shrubs placed about your property will quickly transform your house into a home that you can justly be proud of, and the investment is very small, compared to the pleasure and actual value you secure from them. Regardless of how beautiful and well-kept your house may be, it will not look well if the grounds surrounding it are bare.

ALTHEA (Rose of Sharon).	Each	10		
2 to 3 feet. Assorted colors.....	35c		\$3.00	
BARBERRY (Japanese).				
18 to 24 inches. Green leaf.....	25c		2.00	
BARBERRY (Red Leaf).				
18 to 24 inches.....	40c		3.50	
BECHTELS FLOWERING CRAB.				
A low bushy tree with beautiful pink flowers.				
2 to 3 feet.....	40c		3.50	
3 to 4 feet.....	50c		4.50	
BUTTERFLY BUSH.				
2 to 3 feet. Lavender.....	30c		2.50	
DEUTZIA (Pride of Rochester).				
2 to 3 feet. White with pink edge.....	35c		3.00	
FORSYTHIA (Golden Bell).				
2 to 3 feet. Yellow.....	35c		3.00	
FLOWERING PEACH.				
(Pink or White). A small tree which in April is completely covered with beautiful flowers.				
3 to 4 feet.....	50c		4.50	
4 to 5 feet.....	60c		5.50	
HYDRANGEA (Arborescens Grandiflora).				
2 to 3 feet. White.....	35c		3.00	
HYDRANGEA (Paniculata Grandiflora).				
2 to 3 feet. Pink.....	40c		3.50	
LILAC. White and purple.				
2 to 3 feet.....	50c		4.50	
MOCK ORANGE. White.				
2 to 3 feet.....	35c		3.00	
SNOWBERRY.				
White. 2 to 3 feet.....	30c		2.50	
Red. 2 to 3 feet.....	25c		2.00	
SPIREA.				
Anthony Waterer Red. 18 to 24 inches.....	40c		3.50	
Van Houtti. 5 to 7 feet. An extremely graceful shrub with long, drooping branches, completely covered with clusters of white flowers in May and June. Makes a beautiful hedge. Perfectly hardy.				
	Each	10	50	100
2 to 3 feet.....	25c	\$2.00	\$9.00	\$16.00
18 to 24 inches.....	20c	1.60	7.00	12.00
SNOWBALL (Common).				
White. 2 to 3 feet.....	40c		3.50	
WEIGELA. (2 to 3 feet).				
Rosea. Pink.....	35c		3.00	
Eva Rathke. Red.....	40c		3.50	



Spirea Van Houtti

HEDGING

Remove those unsightly fences and replace them with some of our fine sure-to-grow Hedge Plants. Use them for fences, dividing your property from your neighbor's (they should gladly help you), as a hedge along the front or to serve as a screen in the back. Hedge plants can be trimmed to any desired height.

PRIVET (Ibodium). A vigorous growing variety of fine habit; thick, glossy. Perfectly hardy.

	10	50	100
2-year, 2 to 3 feet, heavy.....	\$.70	\$3.00	\$ 5.00
2-year, 18 to 24 inches, first-class.....	.60	2.50	4.00

SPIREA (Van Houtti). 5 to 6 feet. An extremely graceful shrub with long, drooping branches, completely covered with clusters of white flowers in May and June. Makes a beautiful hedge. Perfectly hardy.

	10	50	100
2-year, 2 to 3 feet.....	\$2.00	\$9.00	\$16.00
2-year, 18 to 24 inches.....	1.60	7.00	12.00

ROSES

HARDY CLIMBERS

45c each; 5 or more, 40c each.

Emily Gray. Yellow. Silver Moon. White.
Paul's Scarlet. Red. Cl. American Beauty. Pink.

Roses—Hybrid Teas

50c each; 5 or more, 45 each.

Pink

Radiance J. J. L. Mock

Yellow

Luxemburg Sunburst

White

K. A. Victoria White Maman Cochet

Red

Red Radiance Hoosier Beauty

GET YOUR ORDER FREE!

The price list is our best agent, but we would like to offer you a means of being one of our salesmen by having you get orders for us. Get orders on the "Club Lot" basis. Get up a club among your neighbors, and on club orders amounting to \$10.00 or more, at single, ten, or fifty rates, we allow you 10 per cent **additional in stock.** We put up each order in a separate package, so that upon receipt of goods you have only to hand out the different lots as ordered. Of course, the more orders you get the more nursery stock we send you **FREE OF CHARGE.** It should be very easy for you to get your own order free in this manner. Try this easy way of saving money.

We Know We Can Please YOU

ORDER BLANK

(Keep a Copy of Your Order)

New Haven Nurseries

New Haven, Franklin County, Mo.

Name ^{Mr.}
^{Mrs.} Write Plainly.
^{Miss}

Post Office.....

Street, P. O. Box or R. F. D.....

County..... State.....

Express or Freight Office if different from Post Office
.....

Forward by..... About.....
Mail, Express or Freight.

Date..... Amount enclosed.....

We use the greatest care possible to have our stock true-to-name, and should any prove not true, we stand ready to replace it free of charge, or to refund the purchase price. It is mutually agreed between the purchaser and ourselves that we shall not at any time be held responsible for any sum greater than the amount originally paid for the stock.

Quantity	Varieties of Stock	Size	Price	Amount

(OVER)

DISTANCE FOR PLANTING

Standard Apples.....	30 to 35 feet apart each way
Standard Pears and Strong-Growing	
Cherries.....	20 feet apart each way
Duke and Morello Cherries.....	18 feet apart each way
Standard Plums and Apricots.....	18 to 20 feet apart each way
Peaches.....	18 to 20 feet apart each way
Grapes.....	rows 8 to 16 feet apart, 7 to 16 feet in rows
Currants and Gooseberries.....	3 to 4 feet apart
Raspberries and Blackberries.....	3 to 4 by 5 to 7 feet apart

NUMBER OF TREES ON AN ACRE

35 feet apart each way.	35	20 feet apart each way.	110
30 feet apart each way.	50	18 feet apart each way.	135
25 feet apart each way.	70	15 feet apart each way.	205

RULE— Multiply the distance in feet between the rows by the distance the plants are apart in the rows, and the product will be the number of square feet for each plant or hill, which, divided into the number of square feet in an acre (43,560), will give the number of plants or trees to the acre.

Proper planting and cultivation with correct pruning and spraying is the best insurance on an orchard.

DENDROL

Dormant Spray Oil

Dendrol Dormant Spray Oil is a miscible or soluble oil which as delivered for use is a transparent oil of clear reddish color. Upon mixture with water it forms a milky-white emulsion.

Dendrol is designed to be used as a dormant spray for the control of injurious insects over-wintering in one stage or another upon shade trees, shrubbery and fruit trees. Some of the most important of such insects that Dendrol will control satisfactorily are San Jose Scale, Oyster Shell Scale, Scurfy Scale, Elm Scale, and many other scale insects; also Red Mite, Leaf Rollers, Aphids, Pear Pyslla, Case Bearers, and others.

Dendrol is so made that it forms a uniform mixture in the spray tank; that is, every part of the mixture is equal in the proper oil strength to every other part. This is very important from the standpoint of uniform dependable insect control and safety to the trees. Dendrol mixes easily with all kinds of water and can be stored for long periods. This makes it easy to save money by buying enough for several years.

PRICES

Barrels	\$23.00
½ Barrel	12.00
5 gallon can	3.80
1 gallon can	1.10
1 quart can60

F. O. B. NEW HAVEN, MO.

Send Your Order Now



It Pays to Plant
Bagby Grown Fruit Trees
 They Grow and Bear True To Name

When you buy Fruit Trees, you want the **best** that can be produced. **BAGBY** grown trees have been on the market for 60 years. When you buy them you are getting the best money can purchase, and you know what the crop will be. Our varieties are correct, our grades full, and all culls go on the brush pile. High quality and

ABSOLUTE SATISFACTION GUARANTEED

With a record of over 60 years' square dealing to back the guaranty.

Visitors Always Welcomed at Our Nurseries. It will be a pleasure to show you our stock.

New Haven Nurseries

J. BAGBY & SONS COMPANY

New Haven, Missouri

Bagby Trees are Full of Vitality because they are Grown Right. They Bring Results.

