

**THE  
BERLIN  
PHOTOGRAPHIC  
COMPANY**



**RUDOLF LESCH**

**FINE ARTS  
GENERAL AGENCY**

**225 FIFTH AVE.  
NEW YORK**



A SELECTION OF  
THE PUBLICATIONS  
OF THE  
BERLIN PHOTOGRAPHIC CO



RUDOLF LESCH  
FINE ARTS  
225 FIFTH AVE. NEW YORK  
GENERAL AGENCY



## PREFACE

	on page
Small illustrations of	
a selection of subjects published by us . . . . .	5-130
a selection from our collection of portraits ("Corpus Imaginum") with a complete list of the same . . . . .	131-152
an alphabetic index of the artists . . . . .	153-156

---

The different editions of each subject, with the size of the picture (not the paper!) and the prices are printed below the cut, after the name of the artist and the title of the subject. It is advisable to refer to the number under the lower lefthand corner of each cut when ordering.

---

Photogravures are printed by hand from engraved copper plates.

C. P. Facsimiles are hand coloured on the copper plate and printed by hand.

H. C. Facsimiles are hand coloured on the print.

Facsimiles is the designation used by us for the very highgrade collotypes which we produce in the true colouring of the originals.

---

---



Digitized by the Internet Archive  
in 2015



7570

P.C.G.

**BRANGWYN, Venice**

Facsimile  $21\frac{1}{2} \times 16\frac{1}{2}$  in. \$ 15.—



7944

P.C.G.

**BRANGWYN, The Buccaneers**

Facsimile  $22 \times 25$  in. \$ 20.—



4567

P©G

### HEMY, Haul aft!

Photogravure  $16\frac{1}{2} \times 28\frac{1}{2}$  in. \$ 12.—  
Photogravure 12  $\times$  20 in. \$ 6.—  
H.C. Facsimile  $16\frac{1}{2} \times 28\frac{1}{2}$  in. \$ 24.—



7553

P©G

### HEMY, Life

C. P. Facsimile 32  $\times$  48 in. \$ 75.—  
Facsimile  $20\frac{1}{2} \times 31\frac{1}{2}$  in. \$ 15.—





7937

**ADAMETZ, The finish**

Facsimile 13×17 in. \$ 12.—

P©G



7940

**ADAMETZ, The return**

Facsimile 13×17 in. \$ 12.—

P©G



7778

P©G

**SCHOENLEBER, Tidal wave**

Facsimile 13 × 22½ in. \$ 12.—



4806

P©G

**SCHOENLEBER, Homeward bound**

Photogravure 15½ × 19½ in. \$ 6.—

H.C. Facsimile 15½ × 19½ in. \$ 12.—



7003

P©G

**SCHOENLEBER,  
Canal in Rotterdam**

Photogravure 19 $\frac{1}{2}$ ×15 in. \$ 6.—



2543

P©G

**v. BARTELS,  
Moonlight on the Zuidersee**

Photogravure 19×15 $\frac{1}{2}$  in. \$ 6.—



4842

P©G

**KALLMORGEN, Sunset at Hamburg**

Facsimile 13 $\frac{1}{2}$ ×20 in. \$ 12.—



3791

**RUISDAEL, Wind-mill**

Rijksmuseum, Amsterdam

H.C. Facsimile  $22\frac{1}{2} \times 28$  in. \$ 24.—

Photogravure  $22\frac{1}{2} \times 28$  in. \$ 12.—



6025

**COROT, Dance of the nymphs**

Louvre, Paris

C.P. Facsimile  $20\frac{1}{2} \times 29\frac{1}{2}$  in. \$ 30.—

H.C. Facsimile  $20\frac{1}{2} \times 29\frac{1}{2}$  in. \$ 24.—

Photogravure  $20\frac{1}{2} \times 29\frac{1}{2}$  in. \$ 12.—

Photogravure  $14\frac{1}{2} \times 20$  in. \$ 6.—



3785

**HOBBEWA, Water-mill**

Rijksmuseum, Amsterdam

H.C. Facsimile 19 $\frac{1}{2}$  × 28 in. \$ 24.—

Photogravure 19 $\frac{1}{2}$  × 28 in. \$ 12.—



6027

**COROT, Spring**

Louvre, Paris

C.P. Facsimile 20 $\frac{1}{2}$  × 29 $\frac{1}{2}$  in. \$ 30.—

H.C. Facsimile 20 $\frac{1}{2}$  × 29 $\frac{1}{2}$  in. \$ 24.—

Photogravure 20 $\frac{1}{2}$  × 29 $\frac{1}{2}$  in. \$ 12.—

Photogravure 14 $\frac{1}{2}$  × 20 in. \$ 6.—



4266

P©G

### LEISTIKOW, Lake in the woods

Museum, Magdeburg

Facsimile	18 $\frac{1}{2}$ × 29 $\frac{1}{2}$ in.	\$ 18.—
Facsimile	6 $\frac{1}{2}$ × 9 in.	\$ 3.50
Photogravure	18 $\frac{1}{2}$ × 29 $\frac{1}{2}$ in.	\$ 12.—
Photogravure	6 $\frac{1}{2}$ × 9 in.	\$ 2.—



4069

P©G

### LEISTIKOW, Lake in the Grunewald

C. P. Facsimile	31 $\frac{1}{2}$ × 47 in.	\$ 75.—
Facsimile	24 × 37 in.	\$ 20.—
Facsimile	13 × 20 in.	\$ 12.—
Facsimile	6 $\frac{1}{2}$ × 9 $\frac{1}{2}$ in.	\$ 3.50
Photogravure	11 $\frac{1}{2}$ × 17 $\frac{1}{2}$ in.	\$ 6.—
Photogravure	6 × 9 $\frac{1}{2}$ in.	\$ 2.—



4148

P©G

**LEISTIKOW, In the Grunewald**

National Gallery, Berlin

H.C. Facsimile	19 × 29 <sup>1</sup> / <sub>2</sub> in.	\$ 24.—
Facsimile	13 × 20 in.	\$ 12.—
Facsimile	6 <sup>1</sup> / <sub>2</sub> × 9 in.	\$ 3.50
Photogravure	19 × 29 <sup>1</sup> / <sub>2</sub> in.	\$ 12.—
Photogravure	12 × 17 <sup>1</sup> / <sub>2</sub> in.	\$ 6.—
Photogravure	6 <sup>1</sup> / <sub>2</sub> × 10 in.	\$ 2.—



7395

F©G

**ACHENBACH, Oswald**  
**Castle of the Angels in Rome**

C.P. Facsimile 22<sup>1</sup>/<sub>2</sub> × 31 in. \$ 30.—



7908

**CLAUDIUS, The day is done**

Facsimile  $16\frac{1}{2} \times 27\frac{1}{2}$  in. \$ 12.—



7856

**CLAUDIUS, Sunday morning**

Facsimile  $14\frac{1}{2} \times 18\frac{1}{2}$  in. \$ 8.—

F©G





7779

**CLAUDIUS, The old homestead**

F©G

Facsimile  $14\frac{1}{2} \times 18\frac{1}{2}$  in. \$ 8.—



7796

**CLAUDIUS, The Parson's garden**

F©G

Facsimile  $16\frac{1}{2} \times 18\frac{1}{2}$  in. \$ 8.—



7857

P©G

**CLAUDIUS, Midsummer**

Facsimile 16 $\frac{1}{2}$  × 24 in. \$ 12.—



7749

P©G

**v. VOLKMANN, Landscape**

Facsimile 17 $\frac{1}{2}$  × 22 in. \$ 12.—



7858

**CLAUDIUS, Harvest time**

Facsimile 18 × 26 in. \$ 12.—



7180

**MÜLLER-KURZWELLY, Park of Sanssouci**

F©G

Facsimile 17 × 25 in. \$ 15.—



2651

P©G

**BUERGEL, Twilight**

Photogravure 13 × 19½ in. \$ 6.—

Photogravure 7 × 9½ in. \$ 2.—



7925

P©G

**GOEHLER, The end of summer**

Facsimile 24 × 30 in. \$ 20.—



4336

**KELLER, The sanctuary by the lake**

P©G

Photogravure	14 <sup>1</sup> / <sub>2</sub> × 18 <sup>1</sup> / <sub>2</sub> in.	\$ 6.—
Photogravure	7 × 9 in.	\$ 2.—
H.C. Facsimile	14 <sup>1</sup> / <sub>2</sub> × 18 <sup>1</sup> / <sub>2</sub> in.	\$ 12.—
H.C. Facsimile	7 × 9 in.	\$ 4.—



7952

**FREY, Quiet sea**

P©G

Facsimile 20<sup>1</sup>/<sub>2</sub> × 31<sup>1</sup>/<sub>2</sub> in. \$ 20.—



2521

**WIERUSZ-KOWALSKI,**  
**The lone wolf**

F©G

Photogravure 15 × 20 in. \$ 6.—  
Photogravure 7 × 9 in. \$ 2.—  
H.C. Facsimile 15 × 20 in. \$ 12.—  
H.C. Facsimile 7 × 9 in. \$ 4.—



7951

**MEYER-EBERHARDT, Roe-kids**

F©G

Facsimile 24 × 27<sup>1</sup>/<sub>2</sub> in. \$ 12.—



7942

**SCHELS, Side jumping**

Facsimile  $10\frac{1}{2} \times 14\frac{1}{2}$  in. \$ 5.—



7841

**KLEMM, Cross jumping**

Facsimile  $8\frac{1}{2} \times 9\frac{1}{2}$  in. \$ 3.50



7840

**KLEMM, Christiania-turn**

Facsimile  $9 \times 11$  in. \$ 3.50



4574

P©G

**BLINKS, Duckshooting**

Facsimile  $12\frac{1}{2} \times 20$  in. \$ 12.—



4229

P©G

**KUHNERT, Scenting the storm**

Photogravure  $16\frac{1}{2} \times 28\frac{1}{2}$  in. \$ 12.—

H.C. Facsimile  $16\frac{1}{2} \times 28\frac{1}{2}$  in. \$ 24.—





7163

F©G

**KEMP-WELCH,**  
**The morning of the year**

Facsimile 15 × 20 in. \$ 12 —



4437

F©G

**KUHNERT, Lions roaring**

Photogravure 11 × 21 in. \$ 6.—  
H.C. Facsimile 11 × 21 in. \$ 12.—



7774

P©G

**v. ZUEGEL, Crossing the river**

Facsimile  $13\frac{1}{2} \times 22$  in. \$ 12.—



7901

P©G

**ROLOFF, Horses in thunderstorm**

Facsimile  $29\frac{1}{2} \times 24$  in. \$ 20.—



7400

P©G

**KEMP-WELCH, The riders**

Photogravure 25 × 28½ in. \$ 12.50

H.C. Facsimile 25 × 28½ in. \$ 25.—



7830

P©G

**ROLOFF, Burning prairie**

Facsimile 21½ × 29½ in. \$ 20.—



4525

P©G

**BLINKS, Last fence**

H.C. Facsimile 16 × 24½ in. \$ 12.—



4169

P©G

**BLINKS, In the marshes**

Photogravure 16½ × 24 in. \$ 6.—  
Photogravure 6½ × 9½ in. \$ 2.—  
H.C. Facsimile 16½ × 24 in. \$ 12.—  
H.C. Facsimile 6½ × 9½ in. \$ 4.—



4526

P©G

**BLINKS, Evens on the field**

H.C. Facsimile 16 × 24<sup>1</sup>/<sub>2</sub> in. \$ 12.—



41b8

P©G

**BLINKS, On the bank**

Photogravure 16<sup>1</sup>/<sub>2</sub> × 24 in. \$ 6.—  
 Photogravure 6<sup>1</sup>/<sub>2</sub> × 9<sup>1</sup>/<sub>2</sub> in. \$ 2.—  
 H.C. Facsimile 16<sup>1</sup>/<sub>2</sub> × 24 in. \$ 12.—  
 H.C. Facsimile 6<sup>1</sup>/<sub>2</sub> × 9<sup>1</sup>/<sub>2</sub> in. \$ 4.—



11399

**van GOGH, The bridge**

Wallraf Richartz Museum, Cologne

Facsimile  $13 \times 17\frac{1}{2}$  in. \$ 12.—



7933

**BRANGWYN, Bridge in Spain**

Facsimile  $16\frac{1}{2} \times 19\frac{1}{2}$  in. \$ 15.—

P©G



11430

P©G

**CEZANNE, Still-life**  
National Gallery, Berlin  
Facsimile 18 × 22 in. \$ 15.—



7946

P©G

**CORINTH, Flowers and fruit**  
Facsimile 21 × 26½ in. \$ 18.—



7760

P©G

**STATTLER, Blue bells and lark-spur**

Facsimile  $14\frac{1}{2} \times 18$  in. \$ 8.—



7489

P©G

**ALBRECHT, Fieldflowers**

Facsimile  $22 \times 17$  in. \$ 12.—





7567

P©G

**HELLER, Tulips**

Facsimile 14 × 18 in. \$ 8.—



7913

P©G

**PLUECKEBAUM,**

**Old fashioned flower piece**

Facsimile 17½ × 14 in. \$ 8.—



7923

**DUXA, Quiet evening**

P©G

Facsimile  $16\frac{1}{2} \times 22$  in. \$ 8.—



7922

**DUXA, The birthday**

P©G

Facsimile  $14\frac{1}{2} \times 18\frac{1}{2}$  in. \$ 5.—



7924

P©G

**DUXA, Sunday afternoon**

Facsimile 16 $\frac{1}{2}$  × 22 in. \$ 8.—



7756

P©G

**THIELMANN, After the christening**

Facsimile 14 × 16 $\frac{1}{2}$  in. \$ 8.—



7949

P©G

**L. CAMPBELL TAYLOR,  
The Japanese Room**

Facsimile 20 × 16 in. \$ 15.—



7650

P©G

**EHRHARDT, Old Weimar**

Facsimile 16½ × 13 in. \$ 8.—



7512

P©G

**EHRHARDT, Roses**

Facsimile 16½ × 13 in. \$ 8.—



7948

P©G

**L. CAMPBELL TAYLOR,  
Game of chess**

Facsimile 20 × 16 in. \$ 15.—



7898

P©G

**KRINGS, Young mother**

Facsimile 18½ × 16 in. \$ 10.—



7897

P©G

**KRINGS, The Smoker**

Facsimile 18½ × 16 in. \$ 10.—

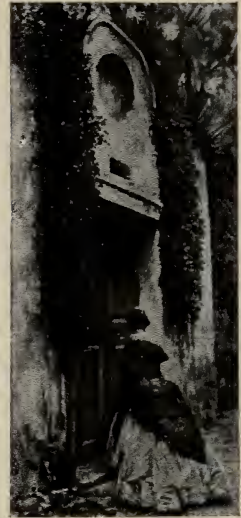


7847,

P©G

**SCHRAMM, The bibelot**

Facsimile  $17\frac{1}{2} \times 17\frac{1}{2}$  in. \$ 12.—



7595

P©G

**EICHHORN, Old Vienna**

Facsimile  $18 \times 7\frac{1}{2}$  in. \$ 8.—



7934

P©G

**WENDLING, At the book-case**

Facsimile  $15 \times 12$  in. \$ 8.—



7910

P©G

**CLAUDIUS, The old library**

Facsimile  $19 \times 14\frac{1}{2}$  in. \$ 10.—



7928

P©G

**WENDING, Tea house**

Facsimile 13 × 9<sup>1</sup>/<sub>2</sub> in. \$ 3.50



7929

P©G

**WENDING, The new ear-rings**

Facsimile 13 × 9 in. \$ 3.50



7926

P©G

**WENDING, Barberina**

Facsimile 11 × 8<sup>1</sup>/<sub>2</sub> in. \$ 3.50



7927

P©G

**WENDING,  
Margravine of Bayreuth**

Facsimile 11 × 8<sup>1</sup>/<sub>2</sub> in. \$ 3.50



7417

**BURI, Old folks**

F©G

Facsimile  $16\frac{1}{2} \times 22$  in. \$ 12.—



7698

**BANTZER, Sunday morning**

F©G

Facsimile  $15\frac{1}{2} \times 22$  in. \$ 12.—





7579

P©G

**VLOORS, Soap bubbles**

Facsimile 17½ × 18½ in. \$ 12.—



243

P©G

**SCHMID, Beethoven**

Photogravure 13 × 20 in. \$ 6.—  
 Photogravure 6 × 9½ in. \$ 2.—  
 H.C. Facsimile 13 × 20 in. \$ 12.—  
 H.C. Facsimile 6 × 9½ in. \$ 4.—



9053

P©G

**CLAUSS, Beethoven's birthplace**

Facsimile 11 × 10½ in. \$ 3.—



4070

**OPPLER, Moonlight-sonata**

P©G

Photogravure 13 × 20 in. \$ 6.—



740

**ROSENTHAL, Morning prayer at J. S. Bach's**

Museum, Leipsic

- Photogravure 22 $\frac{1}{2}$  × 24 in. \$ 15.—
- Photogravure 13 $\frac{1}{2}$  × 20 in. \$ 6.—
- Photogravure 6 $\frac{1}{2}$  × 9 $\frac{1}{2}$  in. \$ 2.—
- H.C. Facsimile 22 $\frac{1}{2}$  × 34 in. \$ 30.—
- H.C. Facsimile 13 $\frac{1}{2}$  × 20 in. \$ 12.—



7052

**WHISTLER, "The piano picture"**

Photogravure 13 × 18 in. \$ 6.—



2314

F©G

**DICKSEE, The child Händel**

Photogravure 15 × 20<sup>1</sup>/<sub>2</sub> in. \$ 6.—  
 Photogravure 7 × 9 in. \$ 2.—  
 H.C. Facsimile 15 × 20<sup>1</sup>/<sub>2</sub> in. \$ 12.—  
 H.C. Facsimile 7 × 9 in. \$ 4.—



7697

**SCHRAMM, Songs without words**

P©G

Facsimile 14½ × 14½ in. \$ 10.—



2395

**SADLER, Chorus**

P©G

Photogravure 22 × 29 in. \$ 15.—  
 Photogravure 7 × 9½ in. \$ 2.—  
 H.C. Facsimile 22 × 29 in. \$ 30.—



7935

**WENDING, Matinée**

Facsimile 22 × 16 in. \$ 15.—

P©G



7783

**LINDERUM, Ave Maria**

Facsimile 19 × 14½ in. \$ 10.—

P©G



7855

**GRAF, Rondo**

Facsimile 18½ × 14½ in. \$ 10.—

P©G



7578

**GRAF, The blue room**

Facsimile 17 × 13 in. \$ 10.—

P©G



2291

**THOMA, Roundelay**

F © G

- Photogravure 31 × 22 in. \$ 15.—
- Photogravure 13 × 10 in \$ 5.—
- Photogravure 9 × 6 in. \$ 2.—
- H.C. Facsimile 31 × 22 in. \$ 30.—



2313

**WATERLOW, At the nursery**

F © G

- Photogravure 13 × 20<sup>1</sup>/<sub>2</sub> in. \$ 6.—
- H.C. Facsimile 13 × 20<sup>1</sup>/<sub>2</sub> in. \$ 12.—
- Photogravure 6 × 8<sup>1</sup>/<sub>2</sub> in. \$ 2.—
- H.C. Facsimile 6 × 8<sup>1</sup>/<sub>2</sub> in. \$ 4.—



2512

© P

**THOMA, Solitude**

Photogravure  $11\frac{1}{2} \times 13\frac{1}{2}$  in. \$ 5.—  
 Photogravure  $7 \times 8\frac{1}{2}$  in. \$ 2.—  
 H.C. Facsimile  $11\frac{1}{2} \times 13\frac{1}{2}$  in. \$ 10.—  
 H.C. Facsimile  $7 \times 8\frac{1}{2}$  in. \$ 4.—



4569

© P

**PEACOCK, Out of the everywhere**

4 color print  $12\frac{1}{2} \times 14\frac{1}{2}$  in. \$ 3.50  
 4 color print  $7 \times 9$  in. \$ 1.50



1786

© P

**KNAUS, Charity**

Facsimile  $29 \times 37$  in. \$ 25.—  
 Photogravure  $14\frac{1}{2} \times 20\frac{1}{2}$  in. \$ 6.—  
 Photogravure  $7 \times 9\frac{1}{2}$  in. \$ 2.—



7790

**PELLAR, Thoughts of love**

P©G

Facsimile 9 × 9 in. \$ 3.50



7785

**PELLAR, Sun-kiss**

P©G

Facsimile 9 × 9 in. \$ 3.50



7786

**PELLAR, Summer-day**

P©G

Facsimile 9 × 9 in. \$ 3.50



7787

**PELLAR, Park-festival**

P©G

Facsimile 9 × 9 in. \$ 3.50





7871 P©G

**PELLAR, Park of Versailles**

Facsimile 10 × 9 in. \$ 3.50



7872 P©G

**PELLAR, Garden of love**

Facsimile 10 × 9 in. \$ 3.50



7829 P©G

**PELLAR, The green canopy**

Facsimile 10 × 9 in. \$ 3.50



7850 P©G

**PELLAR, The cavaliers**

Facsimile 9 × 9 in. \$ 3.50



7921

P©G

**ROEGELS, Wooing**

Facsimile  $8 \times 10\frac{1}{2}$  in. \$ 3.50



7916

P©G

**ROEGELS, The kiss**

Facsimile  $11 \times 7\frac{1}{2}$  in. \$ 3.50



7919

P©G

**ROEGELS, The declaration**

Facsimile  $11 \times 8\frac{1}{2}$  in. \$ 3.50



7920

**ROEGELS, Scherzo**

Facsimile 10 × 11 in. \$ 3.50

P©G



7917

**ROEGELS, Promenade**

Facsimile 11 × 8½ in. \$ 3.50

P©G



7918

**ROEGELS, Outlook**

Facsimile 9 × 7½ in. \$ 3.50

P©G



2700

**ROSSETTI, Dante's Dream**

Photogravure 20 × 29 in. \$ 15.—  
Photogravure 13<sup>1</sup>/<sub>2</sub> × 20 in. \$ 6.—  
Photogravure 6<sup>1</sup>/<sub>2</sub> × 9<sup>1</sup>/<sub>2</sub> in. \$ 2.—  
H.C. Facsimile 20 × 29 in. \$ 30.—



3466

**BURNE-JONES, Love among the ruins**

Photogravure 13 × 20 in. \$ 6.—



4310

**HOLIDAY, Dante and Beatrice**

Photogravure 20 × 29 in. \$ 15.—  
 Photogravure 13<sup>1</sup>/<sub>2</sub> × 20 in. \$ 6.—  
 Photogravure 7 × 10 in. \$ 2.—  
 H.C. Facsimile 20 × 29 in. \$ 30.—



1672

**ALMA-TADEMA, Reading from Homer**

Facsimile 22<sup>1</sup>/<sub>2</sub> × 44<sup>1</sup>/<sub>2</sub> in. \$ 15.—  
 H.C. Facsimile 16 × 32<sup>1</sup>/<sub>2</sub> in. \$ 30.—  
 Photogravure 16 × 32<sup>1</sup>/<sub>2</sub> in. \$ 15.—  
 Photogravure 9 × 19 in. \$ 6.—  
 Photogravure 4 × 9 in. \$ 2.—



2096

P©G

**LEIGHTON, Bath of Psyche**

Photogravure 29 × 9 in. \$ 12.—  
 Photogravure 20½ × 6½ in. \$ 6.—  
 Photogravure 9½ × 3 in. \$ 2.—  
 H.C. Facsimile 29 × 9 in. \$ 24.—



4135

P©G

**GODWARD, Bath of Venus**

Photogravure 20½ × 7 in. \$ 6.—  
 Photogravure 9½ × 3½ in. \$ 2.—  
 H.C. Facsimile 20½ × 7 in. \$ 12.—



7853

P©G

**TRAGY, Girl and parrot**

Facsimile 10 × 9 in. \$ 3.50

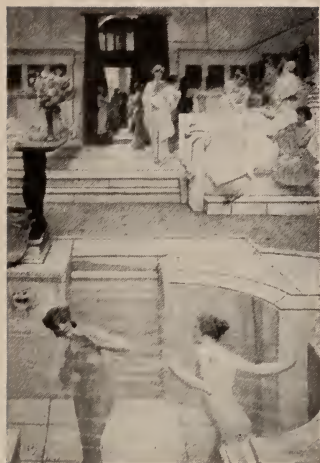


2488

P©G

**WÜNNENBERG, Love's young dream**

Photogravure 13½ × 19½ in. \$ 6.—  
 H.C. Facsimile 13½ × 19½ in. \$ 12.—



7284

P©G

**ALMA-TADEMA,  
Roman bath**

Photogravure 14½ × 10 in. \$ 5.—  
H.C. Facsimile 14½ × 10 in. \$ 10.—



4398

P©G

**ALMA-TADEMA,  
Silver favorites**

Photogravure 12½ × 20 in. \$ 6.—  
Photogravure 9½ × 5½ in. \$ 2.—  
H.C. Facsimile 12½ × 20 in. \$ 12.—



2429

P©G

**ALMA-TADEMA,  
Spring-festival**

Photogravure 35 × 15½ in. \$ 20.—



2094

**POYNTER, A visit to Aesculapius**

Photogravure 19 × 28 in. \$ 15.—  
 Photogravure 13<sup>1</sup>/<sub>2</sub> × 20 in. \$ 6.—  
 Photogravure 6 × 9<sup>1</sup>/<sub>2</sub> in. \$ 2.—  
 H.C. Facsimile 19 × 28 in. \$ 30.—



1920

**LEIGHTON, Captive Andromache**

Photogravure 16<sup>1</sup>/<sub>2</sub> × 34<sup>1</sup>/<sub>2</sub> in. \$ 15.—  
 Photogravure 4<sup>1</sup>/<sub>2</sub> × 9<sup>1</sup>/<sub>2</sub> in. \$ 2.—  
 H.C. Facsimile 16<sup>1</sup>/<sub>2</sub> × 34<sup>1</sup>/<sub>2</sub> in. \$ 30.—



3857

**TITIAN, Sacred and profane love**

Gallery Borghese, Rome  
 Photogravure 13<sup>1</sup>/<sub>2</sub> × 32<sup>1</sup>/<sub>2</sub> in. \$ 15.—  
 H.C. Facsimile 13<sup>1</sup>/<sub>2</sub> × 32<sup>1</sup>/<sub>2</sub> in. \$ 30.—





4129

F©G

**ALMA TADEMA,  
Vain courtship**

Photogravure 21 × 11 in. \$ 6.—  
H.C. Facsimile 21 × 11 in. \$ 12.—



2349

F©G

**ALMA TADEMA,  
In my studio**

Photogravure 13½ × 10 in. \$ 5.—



1957

**SIEMIRADZKI, Phryne at Eleusis**

Photogravure 17½ × 34½ in. \$ 12.—



7939

**HAWKSLEY, Moon-rise**

P©G

Facsimile  $19\frac{1}{2} \times 12$  in. \$ 12.—



7402

**HAVERS, Round dance**

P©G

C.P. Facsimile  $13\frac{1}{2} \times 20$  in. \$ 25.—



6122

**MANET, Olympia**

Louvre, Paris

C.P. Facsimile  $13\frac{1}{2} \times 20$  in. \$ 20.—



3844

**VELASQUEZ, Venus**

National Gallery, London

H.C. Facsimile  $21\frac{1}{2} \times 31\frac{1}{2}$  in. \$ 30.—

Photogravure  $21\frac{1}{2} \times 31\frac{1}{2}$  in. \$ 15.—



7138

**DELAROCHE, Napoleon**

Museum, Leipsic

Photogravure 20 × 14½ in. \$ 6.—

Photogravure 9½ × 7 in. \$ 2.—

H.C. Facsimile 20 × 14½ in. \$ 12.—



7034

**ORCHARDSON, Napoleon on the „Bellerophon“**

Photogravure 20 × 30 in. \$ 15.—

Photogravure 6½ × 10 in. \$ 2.—



2535

**CROFTS, Napoleon and the old guard**

P©G

Photogravure 18½ × 29 in. \$ 15.—



2804

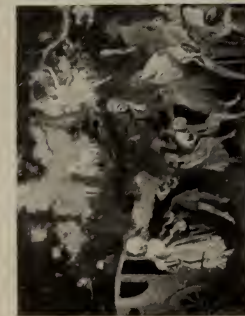
**WERESTSCHAGIN,  
Before Moscow**

Photogravure 19 × 15 in. each \$ 6.—  
Photogravure 12 × 9½ in. each \$ 5.—



2805

**WERESTSCHAGIN,  
In the Kreml**



16 1/2

7947



47 3/4



16 1/2

21 1/4

**LEE WOODWARD, "Fairies' court"**

Facsimile 16 1/2 x 90 1/4 in. \$ 20.--



4550

F©G

**BRITON-RIVIERE, The magician's door-way**

Photogravure 19 × 29 in. \$ 12.—

H.C. Facsimile 19 × 29 in. \$ 24.—



4840

F©G

**DICKSEE, La belle dame sans merci**

Facsimile 18<sup>1</sup>/<sub>2</sub> × 25 in. \$ 20.—



2653

P©G

**DIETRICH, Peace, be still**

H.C. Facsimile	29	× 24	in.	\$ 30.—
Photogravure	29	× 24	in.	\$ 15.—
Photogravure	19 <sup>1</sup> / <sub>2</sub>	× 16	in.	\$ 6.—
Photogravure	9	× 7	in.	\$ 2.—
Photogravure	4	× 3 <sup>1</sup> / <sub>2</sub>	in.	\$ —.75





2037

**HOFMANN, Christ at Gethsemane**

H.C. Facsimile	34	×	25	in.	\$ 30.—
Facsimile	21 <sup>1</sup> / <sub>2</sub>	×	16	in.	\$ 12.—
Photogravure	34	×	25	in.	\$ 15.—
Photogravure	20 <sup>1</sup> / <sub>2</sub>	×	14 <sup>1</sup> / <sub>2</sub>	in.	\$ 6.—
Photogravure	13 <sup>1</sup> / <sub>2</sub>	×	9 <sup>1</sup> / <sub>2</sub>	in.	\$ 4.—
Photogravure	10	×	7	in.	\$ 2.—
Photogravure	5	×	3 <sup>1</sup> / <sub>2</sub>	in.	\$ —.75

**HOFMANN, Head of Christ**

(detail from above)

H.C. Facsimile	10	×	7 <sup>1</sup> / <sub>2</sub>	in.	\$ 4.—
Photogravure	10	×	7 <sup>1</sup> / <sub>2</sub>	in.	\$ 2.—
Photogravure	4 <sup>1</sup> / <sub>2</sub>	×	3 <sup>1</sup> / <sub>2</sub>	in.	\$ —.75



6168

**REMBRANDT, The disciples of Emmaus**  
Louvre, Paris

Photogravure  $15\frac{1}{2} \times 15\frac{1}{2}$  in. \$ 6.—



184

**v. GEBHARDT, The Lord's supper**

National Gallery, Berlin

Photogravure	$21\frac{1}{2} \times 33\frac{1}{2}$ in.	\$ 18.—
Photogravure	$11\frac{1}{2} \times 18\frac{1}{2}$ in.	\$ 6.—
Photogravure	$6 \times 10$ in.	\$ 2.—
Photogravure	$3 \times 5$ in.	\$ —.75



2867

P©G

**EICHSTAEDT, Emmaus**

Facsimile 18 $\frac{1}{2}$  × 26 in. \$ 15.—  
 Photogravure 14 × 20 in. \$ 6.—  
 Photogravure 7 × 10 in. \$ 2.—  
 Photogravure 3 $\frac{1}{2}$  × 5 in. \$ —.75



191a

**LEONARDO DA VINCI, The Lord's supper (Sta. Maria delle Grazie, Milan)**

H.C. Facsimile 17 $\frac{1}{2}$  × 34 in. \$ 30.—  
 H.C. Facsimile 12 × 22 $\frac{1}{2}$  in. \$ 12.—  
 Photogravure 17 $\frac{1}{2}$  × 34 in. \$ 15.—  
 Photogravure 12 × 22 $\frac{1}{2}$  in. \$ 6.—  
 Photogravure 5 × 9 $\frac{1}{2}$  in. \$ 2.—



4479

P©G

**BURNAND, Christ at Bethany**

Photogravure  $14\frac{1}{2} \times 20$  in. \$ 6.—  
 Photogravure  $7 \times 9\frac{1}{2}$  in. \$ 2.—  
 Photogravure  $3\frac{1}{2} \times 5$  in. \$ —.75



4287

P©G

**BURNAND, The Lord's prayer**

Photogravure  $17\frac{1}{2} \times 35$  in. \$ 20.—  
 Photogravure  $5 \times 10$  in. \$ 2.—  
 Photogravure  $2 \times 5$  in. \$ —.75



2739

P © G

**DIETRICH, The good shepherd**

Facsimile 16 × 9 in. \$ 5.—  
 Photogravure 20 × 12 in. \$ 6.—  
 Photogravure 9½ × 5½ in. \$ 2.—  
 Photogravure 5 × 3 in. \$ —.75



2524

P © G

**PARKER, The door of the fold**

Photogravure 20 × 13½ in. \$ 6.—  
 Photogravure 9½ × 5½ in. \$ 2.—  
 Photogravure 5 × 3½ in. \$ —.75



1845

**MÜLLER, CARL,  
 Christ and the disciples**

Photogravure 9½ × 7 in. \$ 2.—  
 Photogravure 5 × 3½ in. \$ —.75



1772

**PFANNSCHMIDT,  
 Suffer little children to come unto me**

Photogravure 14½ × 9½ in. \$ 5.—  
 Photogravure 10 × 6½ in. \$ 2.—  
 H.C. Facsimile 10 × 6½ in. \$ 4.—



2453

© P

**DIETRICH, Lord, have mercy upon us!**

- Photogravure 15 × 20½ in. \$ 6.—  
 Photogravure 7 × 10 in. \$ 2.—  
 Photogravure 3½ × 5 in. \$ —.75



2574

© P

to the left:  
**RYLAND, Ruth**

to the right:  
**RYLAND, Rachel**

- Facsimile  
 15 × 5 in. each \$ 5.—  
 Photogravure  
 15½ × 7 in. each \$ 5.—  
 9½ × 4½ in. each \$ 2.—  
 H.C.Facsimile  
 15½ × 7 in. each \$ 10.—  
 9½ × 4½ in. each \$ 4.—

besides of the picture „Ruth“  
 a photogravure  
 19 × 8½ in. \$ 7.50



4476

© P



1795

**SINKEL, Christ-child  
with IV Commandment**

Photogravure 9 × 7½ in. \$ 2.—

Photogravure 4 × 3½ in. \$ —.75

H.C. Facsimile 9 × 7½ in. \$ 4.—



1436

**ITTENBACH, Virgin Mary**

Photogravure 9 × 7½ in. \$ 2.—

Photogravure 4 × 3½ in. \$ —.75

H.C. Facsimile 9 × 7½ in. \$ 4.—



1857

**ITTENBACH, Christ-child**

Photogravure 10 × 7½ in. \$ 2.—

Photogravure 5 × 3½ in. \$ —.75

H.C. Facsimile 10 × 7½ in. \$ 4.—



1806

**SINKEL, Sancta Maria Virgo**

Photogravure 9 × 7½ in. \$ 2.—

H.C. Facsimile 9 × 7½ in. \$ 4.—



3000

**RAFFAEL, Sistine Madonna**

Gallery, Dresden

H.C. Facsimile	45 $\frac{1}{2}$ × 33 in.	\$ 50.—
H.C. Facsimile	35 × 26 in.	\$ 30.—
H.C. Facsimile	21 × 15 in.	\$ 12.—
H.C. Facsimile	10 × 7 in.	\$ 4.—
Photogravure	45 $\frac{1}{2}$ × 33 in.	\$ 25.—
Photogravure	35 × 26 in.	\$ 15.—
Photogravure	21 × 15 in.	\$ 6.—
Photogravure	10 × 7 in.	\$ 2.—





3001

**RAFFAEL, Sistine Madonna (detail)**

H.C. Facsimile	33	×	26	in.	\$	30.—
H.C. Facsimile	20	×	14 <sup>1</sup> / <sub>2</sub>	in.	\$	12.—
H.C. Facsimile	9 <sup>1</sup> / <sub>2</sub>	×	7	in.	\$	4.—
Photogravure	33	×	26	in.	\$	15.—
Photogravure	20	×	14 <sup>1</sup> / <sub>2</sub>	in.	\$	6.—
Photogravure	9 <sup>1</sup> / <sub>2</sub>	×	7	in.	\$	2.—



3003

**MURILLO, St. Anthony of Padua**  
Museum, Berlin

Photogravure	24	×	29 <sup>1</sup> / <sub>2</sub>	in.	\$	18.—
Photogravure	15 <sup>1</sup> / <sub>2</sub>	×	19	in.	\$	6.—



3079

**MURILLO,**  
**Ascension of the Virgin Mary**  
Hermitage, St. Petersburg  
Photogravure 20 × 14½ in. \$ 6.—



2275

P©C

**FRANZ MUELLER,**  
**Virgin Mary**  
Photogravure 19½ × 14 in \$ 6.—



3226

**MURILLO,**  
**The Immaculate Conception**  
Prado, Madrid  
Photogravure 20 × 14 in. \$ 6.—



6139

**MURILLO,**  
**The Immaculate Conception**  
Louvre, Paris  
H.C. Facsimile 20 × 14 in. \$ 12.—  
Photogravure 20 × 14 in. \$ 6.—



2834

P©G

**COLLIER,**

**So wide is my love (Sic te amo)**

Facsimile 16 $\frac{1}{2}$  × 11 $\frac{1}{2}$  in. \$ 6.—  
 Photogravure 9 $\frac{1}{2}$  × 7 in. \$ 2.—  
 Photogravure 5 × 3 $\frac{1}{2}$  in. \$ —.75



4072

P©G

**PARSONS, Hail Mary**

Photogravure 19 $\frac{1}{2}$  × 12 in. \$ 6.—  
 Photogravure 5 × 3 in. \$ —.75



1164

**CARL MUELLER,**

**The Immaculate Conception**

Photogravure 18 $\frac{1}{2}$  × 14 $\frac{1}{2}$  in. \$ 6.—  
 Photogravure 12 $\frac{1}{2}$  × 9 $\frac{1}{2}$  in. \$ 5.—  
 Photogravure 8 $\frac{1}{2}$  × 7 in. \$ 2.—  
 Photogravure 4 $\frac{1}{2}$  × 3 $\frac{1}{2}$  in. \$ —.75



7255

P©G

**DICKSEE, The shadowed face**

Facsimile 26 × 14 $\frac{1}{2}$  in. \$ 15.—  
 Photogravure 29 $\frac{1}{2}$  × 17 in. \$ 15.—



1446

**CARL MUELLER,**  
**St. Anne with the child Mary**

H.C. Facsimile	19 × 8 <sup>1</sup> / <sub>2</sub> in.	\$ 12.—
H.C. Facsimile	14 × 6 in.	\$ 8.—
H.C. Facsimile	11 × 4 <sup>1</sup> / <sub>2</sub> in.	\$ 4.—
Photogravure	19 × 8 <sup>1</sup> / <sub>2</sub> in.	\$ 6.—
Photogravure	14 × 6 in.	\$ 4.—
Photogravure	11 × 4 <sup>1</sup> / <sub>2</sub> in.	\$ 2.—
Photogravure	5 × 2 in.	\$ —.75



1447

**CARL MUELLER,**  
**St. Joseph with the boy Jesus**

H.C. Facsimile	19 × 8 <sup>1</sup> / <sub>2</sub> in.	\$ 12.—
H.C. Facsimile	14 × 6 in.	\$ 8.—
H.C. Facsimile	11 × 4 <sup>1</sup> / <sub>2</sub> in.	\$ 4.—
Photogravure	19 × 8 <sup>1</sup> / <sub>2</sub> in.	\$ 6.—
Photogravure	14 × 6 in.	\$ 4.—
Photogravure	11 × 4 <sup>1</sup> / <sub>2</sub> in.	\$ 2.—
Photogravure	5 × 2 in.	\$ —.75



8471

**RAFFAEL,**  
**Madonna del Granduca**  
Pitti Gallery, Florence

Facsimile	33 × 22 <sup>1</sup> / <sub>2</sub> in.	\$ 18.—
H.C. Facsimile	20 <sup>1</sup> / <sub>2</sub> × 14 in.	\$ 12.—
H.C. Facsimile	8 <sup>1</sup> / <sub>2</sub> × 5 <sup>1</sup> / <sub>2</sub> in.	\$ 4.—
Photogravure	20 <sup>1</sup> / <sub>2</sub> × 14 in.	\$ 6.—
Photogravure	8 <sup>1</sup> / <sub>2</sub> × 5 <sup>1</sup> / <sub>2</sub> in.	\$ 2.—



8441

**MURILLO,**  
**Madonna with child**  
Uffizi Gallery, Florence

H.C. Facsimile	20 <sup>1</sup> / <sub>2</sub> × 14 in.	\$ 12.—
H.C. Facsimile	9 <sup>1</sup> / <sub>2</sub> × 7 in.	\$ 4.—
Photogravure	20 <sup>1</sup> / <sub>2</sub> × 14 in.	\$ 6.—
Photogravure	9 <sup>1</sup> / <sub>2</sub> × 7 in.	\$ 2.—



1860

**ITTENBACH, The holy family**

H.C. Facsimile	20	× 14	in.	\$ 12.—
Photogravure	20	× 14	in.	\$ 6.—
Photogravure	12 <sup>1</sup> / <sub>2</sub>	× 9	in.	\$ 5.—
Photogravure	10	× 7	in.	\$ 2.—
Photogravure	5	× 3 <sup>1</sup> / <sub>2</sub>	in.	\$ 0.75



2086

**ITTENBACH, Mater Christi**

H.C. Facsimile	18 <sup>1</sup> / <sub>2</sub>	× 13 <sup>1</sup> / <sub>2</sub>	in.	\$ 12.—
Photogravure	18 <sup>1</sup> / <sub>2</sub>	× 13 <sup>1</sup> / <sub>2</sub>	in.	\$ 6.—
Photogravure	12 <sup>1</sup> / <sub>2</sub>	× 8	in.	\$ 5.—
Photogravure	9 <sup>1</sup> / <sub>2</sub>	× 6 <sup>1</sup> / <sub>2</sub>	in.	\$ 2.—
Photogravure	5	× 3 <sup>1</sup> / <sub>2</sub>	in.	\$ 0.75



2102

**ITTENBACH,  
St. Anne with  
the child Mary**

Photogravure	9 <sup>1</sup> / <sub>2</sub>	× 3 <sup>1</sup> / <sub>2</sub>	in.	\$ 2.—
--------------	-------------------------------	---------------------------------	-----	--------



927

**ITTENBACH,  
The holy family in Egypt**

H.C. Facsimile	18 <sup>1</sup> / <sub>2</sub>	× 13	in.	\$ 12.—
Photogravure	18 <sup>1</sup> / <sub>2</sub>	× 13	in.	\$ 6.—
Photogravure	12	× 8	in.	\$ 5.—
Photogravure	10	× 7	in.	\$ 2.—
Photogravure	5	× 3 <sup>1</sup> / <sub>2</sub>	in.	\$ 0.75



2103

**ITTENBACH,  
St. Joseph with  
the boy Jesus**

Photogravure	9 <sup>1</sup> / <sub>2</sub>	× 3 <sup>1</sup> / <sub>2</sub>	in.	\$ 2.—
--------------	-------------------------------	---------------------------------	-----	--------



7950

F©G

**H. WINDELSCHMIDT,**  
**Thou fairest flower of heaven!**  
Facsimile  $21\frac{1}{2} \times 17$  in. \$ 12.—



793P

F©G

**H. WINDELSCHMIDT,**  
**Madonna with child**  
Facsimile  $26 \times 21\frac{1}{8}$  in. \$ 20.—



5186

**LIPPI, Madonna adoring the child**

Museum, Berlin

Facsimile 19 × 17 in. \$ 15.—  
 Photogravure 16½ × 15 in. \$ 6.—



3750

**van EYCK, Angels singing**

Museum, Berlin

Facsimile 20½ × 8½ in. \$ 12.—  
 Photogravure 20 × 7½ in. \$ 6.—



3754

**van EYCK, Angels playing**

Museum, Berlin

Facsimile 20½ × 8½ in. \$ 12.—  
 Photogravure 20 × 7½ in. \$ 6.—



5044

**BOTTICELLI,**  
**Virgin Mary with child and singing angels**

Museum, Berlin

Facsimile	17 $\frac{1}{2}$ × 17 $\frac{1}{2}$ in.	\$ 15.—
H.C. Facsimile	16 × 16 in.	\$ 12.—
Photogravure	16 × 16 in.	\$ 6.—



6329

**BOTTICELLI, Magnificat**  
 Uffizi Gallery, Florence

Facsimile	21 $\frac{1}{2}$ × 21 $\frac{1}{2}$ in.	\$ 18.—
H.C. Facsimile	16 × 16 in.	\$ 12.—
Photogravure	16 × 16 in.	\$ 6.—





6469

**RAFFAEL, Madonna della Sedia**

Pitti Gallery, Florence

Facsimile	28 $\frac{1}{2}$ × 28 $\frac{1}{2}$ in.	\$ 18.—
H.C. Facsimile	23 × 23 in.	\$ 24.—
H.C. Facsimile	16 $\frac{1}{2}$ × 16 $\frac{1}{2}$ in.	\$ 12.—
H.C. Facsimile	7 $\frac{1}{2}$ × 7 $\frac{1}{2}$ in.	\$ 4.—
Photogravure	23 × 23 in.	\$ 12.—
Photogravure	16 $\frac{1}{2}$ × 16 $\frac{1}{2}$ in.	\$ 6.—
Photogravure	7 $\frac{1}{2}$ × 7 $\frac{1}{2}$ in.	\$ 2.—



5038

**BOTTICELLI,  
Virgin Mary with child and angels**

Museum, Berlin

Photogravure 16 × 16 in. \$ 6.—



3771

**REMBRANDT, The night-watch**

Rijksmuseum, Amsterdam

Photogravure 27 × 33 in. \$ 20.—

Photogravure 16½ × 20 in. \$ 6.—



3018

**REMBRANDT, The watch**

Gallery Cassel

Photogravure 19 × 15 in. \$ 6.—



3017

**REMBRANDT,**

**Portrait of Nic. Bruyningh**

Gallery Cassel

Photogravure 18<sup>1</sup>/<sub>2</sub> × 15<sup>1</sup>/<sub>2</sub> in. \$ 6.—



3772

**REMBRANDT, The syndics**

Rijksmuseum, Amsterdam

C.P. Facsimile	23	×	34	in.	\$	40.—
H.C. Facsimile	32 <sup>1</sup> / <sub>2</sub>	×	48	in.	\$	60.—
H.C. Facsimile	23	×	34	in.	\$	30.—
Photogravure	23	×	34	in.	\$	15.—
Photogravure	13 <sup>1</sup> / <sub>2</sub>	×	20	in.	\$	6.—



3023

**REMBRANDT,  
Portrait of himself**

Museum, Berlin

Photogravure  $17\frac{1}{2} \times 14\frac{1}{2}$  in. \$ 6.—



3041

**REMBRANDT,  
The man with the golden helmet**

Museum, Berlin

Facsimile  $19 \times 15\frac{1}{2}$  in. \$ 12.—  
Photogravure  $16\frac{1}{2} \times 12$  in. \$ 6.—



3773

**REMBRANDT, A lesson in anatomy**

Mauritshuis the Hague

Photogravure  $16 \times 21\frac{1}{2}$  in. \$ 6.—



3123

**REMBRANDT,**

**Portrait of a man**

Hermitage, St. Petersburg

Photogravure 18 × 12½ in. \$ 6.—



3129

**REMBRANDT,**

**Portrait of an old woman**

Hermitage, St. Petersburg

Photogravure 16½ × 14 in. \$ 6.—



3110

**REMBRANDT, Abraham and the angels**

Hermitage, St. Petersburg

Photogravure 14½ × 19 in. \$ 6.—

3110



10 007

**RUBENS, Fruit garland**

Museum, Berlin

Facsimile  $22 \times 37\frac{1}{2}$  in. \$ 18.—



5272

**RUBENS, Diana's chase**

Museum, Berlin

H.C. Facsimile  $18 \times 49$  in. \$ 60.—

Photogravure  $18 \times 49$  in. \$ 30.—

Photogravure  $7 \times 20\frac{1}{2}$  in. \$ 6.—



3186

**VELASQUEZ, The spinners**  
Prado, Madrid

Photogravure 14½ × 20 in. \$ 6.—



3184

**VELASQUEZ, The surrender of Breda**  
Prado, Madrid

Photogravure 15 × 18 in. \$ 6.—



9100

**HALS, The laughing cavalier**

Wallace Collection, London

C.P. Facsimile 29 × 23 in. \$ 40.—

H.C. Facsimile 20 × 16 in. \$ 15.—

Photogravure 29 × 23 in. \$ 15.—

Photogravure 20 × 16 in. \$ 6.—



3782

**HALS, The jolly toper**

Rijksmuseum, Amsterdam

Photogravure 18½ × 15 in. \$ 6.—



5159

**HALS, Nurse with child**

Museum, Berlin

Facsimile 21 × 16 in. \$ 15.—

Photogravure 18½ × 13½ in. \$ 6.—



5513

**HALS, Willem van Heythuysen**

Liechtenstein Gallery, Vienna

Photogravure 20 × 13 in. \$ 6.—





6111

**LEONARDO DA VINCI,  
Mona Lisa**

Louvre, Paris

C.P. Facsimile  $19\frac{1}{2} \times 13\frac{1}{2}$  in. \$ 30.—

Photogravure  $20 \times 13\frac{1}{2}$  in. \$ 6.—



6533

**TITIAN, La Bella**

Pitti Gallery, Florence

C.P. Facsimile  $20 \times 15\frac{1}{2}$  in. \$ 30.—

Photogravure  $20 \times 15\frac{1}{2}$  in. \$ 6.—



5336

**TITIAN, Lavinia**

Museum, Berlin

Facsimile  $19\frac{1}{2} \times 16$  in. \$ 15.—

Photogravure  $19 \times 14\frac{1}{2}$  in. \$ 6.—



3004

**TITIAN, The tribute money**

Gallery Dresden

Photogravure  $13\frac{1}{2} \times 18\frac{1}{2}$  in. \$ 6.—



3406

**DUERER,  
Hieronymus Holzschuher**

Museum, Berlin

Facsimile 19 × 13½ in. \$ 15.—  
 Photogravure 16½ × 12 in. \$ 6.—  
 Photogravure 13 × 9 in. \$ 4.—



3408

**DUERER,  
Portrait of a woman**

Museum, Berlin

Photogravure 8½ × 7 in. \$ 2.—



3414

**HOLBEIN, George Giske**

Museum, Berlin

Facsimile 20 × 18 in. \$ 12.—  
 Photogravure 16½ × 14½ in. \$ 6.—



3668

**DUERER, Emperor Maximilian I.**

Gallery Vienna

Photogravure 18 × 14½ in. \$ 6.—



3363

**van DYCK, Man with sunflower**

Grosvenor House, London

Photogravure 13 × 16½ in. \$ 6.—



3098

**van DYCK, (Hanneman) William II  
of Nassau, Prince of Orange**

Hermitage, St. Petersburg

Photogravure 18½ × 15 in. \$ 6.—

H.C. Facsimile 18½ × 15 in. \$ 12.—



5499

**van DYCK, Maria Louise de Tassis**

Gallery Liechtenstein, Vienna

Photogravure 19 × 13½ in. \$ 6.—



3102

**van DYCK, Portrait of himself**

Hermitage, St. Petersburg

Photogravure 18½ × 14½ in. \$ 6.—



5564

**TER BORCH, Young lady reading**

Photogravure  $9\frac{1}{2} \times 8\frac{1}{2}$  in. \$ 2.—



5195

**MAES, Old woman peeling apples**

Museum, Berlin

Photogravure  $8\frac{1}{2} \times 7$  in. \$ 2.—



5209

**JAN VAN DER MEER VAN DELFT,  
Gentleman and lady drinking wine**

Facsimile 20 × 17 in. \$ 15.—

Photogravure  $12 \times 16\frac{1}{2}$  in. \$ 4.—



6393

**GIORGIONE, The concert**

Pitti Gallery, Florence

C.P. Facsimile  $15\frac{1}{2} \times 17\frac{1}{2}$  in. \$ 25.—

H.C. Facsimile  $15\frac{1}{2} \times 17\frac{1}{2}$  in. \$ 12.—

Photogravure  $15\frac{1}{2} \times 17\frac{1}{2}$  in. \$ 6.—



5141

**GIORGIONE, Portrait of a man**

Museum, Berlin

Photogravure  $14 \times 11$  in. \$ 4.—



5113

**JAN van EYCK, Man with pink**

Museum, Berlin

Facsimile  $15 \times 10\frac{1}{2}$  in. \$ 12.—

Photogravure  $13 \times 9\frac{1}{2}$  in. \$ 4.—



5325

**TER BORCH, Fatherly admonition**

Museum, Berlin

Photogravure 17½ × 15 in. \$ 6.—



5799

**VAN DER MEER VAN DELFT,**

**Girl reading a letter**

Gallery Dresden

Photogravure 17½ × 13½ in. \$ 6.—



5328

**TER BORCH, Concert**

Museum, Berlin

Facsimile 20 × 16 in. \$ 15.—

Photogravure 17½ × 14 in. \$ 6.—



5550

**JAN VAN DER MEER VAN DELFT,**

**Mistress and servant**

Photogravure 17½ × 15 in. \$ 6.—



**DE HOOCH, The mother**

Museum, Berlin

Photogravure 15½ × 16½ in. \$ 6.—



3331

**DE HOOCH, Dutch interior**

Photogravure 9 × 8 in. \$ 2.—



**DE VOS, The painter's daughters**

Museum, Berlin

Facsimile 18 × 21 in. \$ 15.—

Photogravure 11 × 13 in. \$ 4.—



5208

**JAN VAN DER MEER VAN DELFT  
The pearl-necklace**

Museum, Berlin

Facsimile 20 × 17 in. \$ 15.—

Photogravure 13 × 10½ in. \$ 4.—



5949

**REYNOLDS, Master Spencer**

C.P. Facsimile 19 × 14½ in. \$ 25.—  
Photogravure 19 × 14½ in. \$ 6.—



5876

**REYNOLDS, Lady Crewe**

C.P. Facsimile 19 × 14½ in. \$ 25.—  
Photogravure 19 × 14½ in. \$ 6.—



5856

**REYNOLDS, Lavinia Bingham**

C.P. Facsimile 17 × 14 in. \$ 25.—  
Photogravure 17 × 14 in. \$ 6.—



5855

**REYNOLDS, Anne Bingham**

C.P. Facsimile 17 × 14 in. \$ 25.—  
Photogravure 17 × 14 in. \$ 6.—





3364

**GAINSBOROUGH, The blue boy**

H.C. Facsimile 18 × 12 in. \$ 12.—

Photogravure 18 × 12 in. \$ 6.—



5683

**LAWRENCE, Miss Farren**

C.P. Facsimile 20 × 12½ in. \$ 25.—

Photogravure 20 × 12½ in. \$ 6.—



5875

**REYNOLDS, Master Crewe**

C.P. Facsimile 19½ × 15 in. \$ 25.—

Photogravure 19½ × 15 in. \$ 6.—



5857

**LAWRENCE, Master Lambton**

C.P. Facsimile 19½ × 15 in. \$ 25.—

Photogravure 19½ × 15 in. \$ 6.—



5896

**DROUAIS, Princess Condé**

Louvre, Paris

C.P. Facsimile 20 × 14½ in. \$ 25.—

H.C. Facsimile 20 × 14½ in. \$ 12.—

Photogravure 20 × 14½ in. \$ 6.—



5891

**BOUCHER,****Marquise de Pompadour**

H.C. Facsimile 20 × 15 in. \$ 12.—

Photogravure 20 × 15 in. \$ 6.—



5898

**NATTIER, Madame de Laporte**

H.C. Facsimile 20 × 15½ in. \$ 12.—

Photogravure 20 × 15½ in. \$ 6.—



5897

**NATTIER, Elisabeth de Bologne**

C.P. Facsimile 20 × 15 in. \$ 25.—

H.C. Facsimile 20 × 15 in. \$ 12.—

Photogravure 20 × 15 in. \$ 6.—



65

**UNKNOWN MASTER,  
Countess Potocka**

Facsimile 19 × 15½ in. \$ 12.—

Photogravure 16½ × 13 in. \$ 6.—



3336

**GAINSBOROUGH,  
Mrs. Siddons**

National Gallery, London

C.P. Facsimile 18 × 14 in. \$ 25.—

Photogravure 18 × 14 in. \$ 6.—



5944

**RAEBURN,**

**William Ferguson of Kilrie**

C.P. Facsimile 15½ × 13 in. \$ 25.—

Photogravure 15½ × 13 in. \$ 6.—



7448

**WHISTLER,**

**Miss Alexander**

C.P. Facsimile 20½ × 10½ in. \$ 25.—



6275

**ROMNEY, Mrs. Johnson**

C.P. Facsimile 9 × 7 in. \$ 20.—  
Facsimile 9 × 7 in. \$ 3.50



6273

**HOPPNER, Olivia**

C.P. Facsimile 9 × 7 in. \$ 20.—  
Facsimile 9 × 7 in. \$ 3.50



5917

**VIGÉE LEBRUN,  
Empress Elizabeth of Russia**

C.P. Facsimile 9 × 7 $\frac{1}{2}$  in. \$ 20.—  
H.C. Facsimile 18 $\frac{1}{2}$  × 15 $\frac{1}{2}$  in. \$ 12.—  
Facsimile 9 × 7 $\frac{1}{2}$  in. \$ 3.50  
Photogravure 18 $\frac{1}{2}$  × 15 $\frac{1}{2}$  in. \$ 6.—



6274

**GAINSBOROUGH,  
Miss Linley**

C.P. Facsimile 9 × 7 in. \$ 20.—  
Facsimile 9 × 7 in. \$ 3.50



6405

**VIGÉE LEBRUN,  
Portrait of herself**

Gallery Uffizien, Florence

Photogravure 18½ × 15 in. \$ 6.—



6105

**VIGÉE LEBRUN,  
Mme, Molé-Raymond**

Louvre, Paris

C.P. Facsimile 20 × 14½ in. \$ 25.—



6103

**VIGÉE LEBRUN,  
Portrait of herself and daughter**

Louvre, Paris

H.C. Facsimile 20 × 15½ in. \$ 12.—

Photogravure 20 × 15½ in. \$ 6.—



6104

**VIGÉE LEBRUN,  
Portrait of herself and daughter**

Louvre, Paris

H.C. Facsimile 19 × 15½ in. \$ 12.—

Photogravure 19 × 15½ in. \$ 6.—



6083

**GREUZE, Milk-maid**

Louvre, Paris

H. C. Facsimile  $19\frac{1}{2} \times 15\frac{1}{2}$  in. \$ 12.—  
Photogravure  $19\frac{1}{2} \times 15\frac{1}{2}$  in. \$ 6.—



6082

**GREUZE,**

**The broken pitcher**

Louvre, Paris

H. C. Facsimile  $19\frac{1}{2} \times 15\frac{1}{2}$  in. \$ 12.—  
Photogravure  $19\frac{1}{2} \times 15\frac{1}{2}$  in. \$ 6.—



3334

**GREUZE, Head of a girl**

National Gallery, London

Photogravure  $9\frac{1}{2} \times 7\frac{1}{2}$  in. \$ 2.—



5893

**GREUZE, The eaves-dropper**

C. P. Facsimile  $11\frac{1}{2} \times 9\frac{1}{2}$  in. \$ 20.—  
Photogravure  $11\frac{1}{2} \times 9\frac{1}{2}$  in. \$ 4.—



5882

**GREUZE, Head of a girl**

Photogravure  $8\frac{1}{2} \times 7$  in. \$ 2.—



6100

**LANCRET, Music-lesson**

Louvre, Paris

- Facsimile 21 × 21 in. \$ 18.—  
 C.P. Facsimile 15½ × 16½ in. \$ 25.—  
 H.C. Facsimile 15½ × 16½ in. \$ 12.—  
 Photogravure 15½ × 16½ in. \$ 6.—

**LANCRET, Innocence**

Louvre, Paris

- Facsimile 21 × 21 in. \$ 18.—  
 C.P. Facsimile 15½ × 16½ in. \$ 25.—  
 H.C. Facsimile 15½ × 16½ in. \$ 12.—  
 Photogravure 15½ × 16½ in. \$ 6.—



6101

**LANCRET,  
The dancer Camargo**

Photogravure 12½ × 18 in. \$ 6.—



3389



3403

**WATTEAU, The departure for Cythera**

Photogravure 13 × 19½ in. \$ 6.—



3322

**LANCRET, The dance at the Pegasus fountain**

Facsimile 22½ × 31½ in. \$ 18.—

Photogravure 9½ × 14 in. \$ 4.—



# THE VICTORY OF COLOUR

---

---

The important stages  
of modern art  
in 40 large colour prints





11400

**DAUBIGNY, Landscape**

Museum Budapest

Facsimile 11 × 20 in. \$ 12.—



11401

**COROT, The pond of Ville d'Avray**

Museum Straßburg

Facsimile 13 × 18<sup>1</sup>/<sub>2</sub> in. \$ 12.—



11436

**SISLEY, Seine landscape**

Museum, Elberfeld

Facsimile  $13 \times 18\frac{1}{2}$  in. \$ 12.—



11402

**TROYON, Rising thunderstorm**

Museum, Budapest

Facsimile  $14 \times 18\frac{1}{2}$  in. \$ 12.—



11418

**COURBET, Picnic**

Wallraf Richartz Museum, Cologne

Facsimile 13 × 20 in. \$ 12.—



11417

**MANET, In the hot-house**

National Gallery, Berlin

Facsimile 14 × 18 in. \$ 12.—



11403

**DEGAS, The dancer**

Louvre, Paris

Facsimile  $18\frac{1}{2} \times 13$  in. \$ 12.—



11404

**RENOIR, The children in Vargemont**

National Gallery, Berlin

Facsimile  $13\frac{1}{2} \times 18\frac{1}{2}$  in. \$ 12.—



11406

**van GOGH, The Zuave Milliet**

Facsimile 19 × 15 in. \$ 12.—



11435

**DAUMIER, The riders**

Facsimile 7½ × 15½ in. \$ 12.—



11422

**SIGNAC, Port of La Rochelle**

Facsimile  $13\frac{1}{2} \times 19\frac{1}{2}$  in. \$ 12.—



11437

**SEURAT, Poseuses**

F©G

Facsimile  $18 \times 22\frac{1}{2}$  in. \$ 15.—



11428

**CROSS, Sailing-vessels**

Facsimile 15 × 19 in. \$ 12.—



11429

**CEZANNE, Landscape**

Facsimile 21 × 17 in. \$ 15.—





11409

**ROUSSEAU, The toll gate**

Facsimile  $15\frac{1}{2} \times 12\frac{1}{2}$  in. \$ 12.—



11421

**DERAIN, Landscape**

Facsimile  $15\frac{1}{2} \times 19$  in. \$ 12.—



11412

**v. MAREES, In the park of Villa Borghese**

Facsimile 13 × 19 in. \$ 12.—



11433

**BLECHEN, Ascent to Terni**

Facsimile 16 × 20 in. \$ 12.—



7348

**LEIBL, The spinner**

Facsimile  $18\frac{1}{2} \times 21$  in. \$ 15.—



7780

**LIEBERMANN, Orphan girls in Amsterdam**

Facsimile  $19\frac{1}{2} \times 26\frac{1}{2}$  in. \$ 15.—



11415

**GAUGUIN, Contes barbares**

Museum, Essen

Facsimile  $18\frac{1}{2} \times 12\frac{1}{2}$  in. \$ 12.—



11410

**HODLER, Spring**

Museum, Essen

Facsimile  $15 \times 19\frac{1}{2}$  in.

This print is not sold separately but only within the complete series.



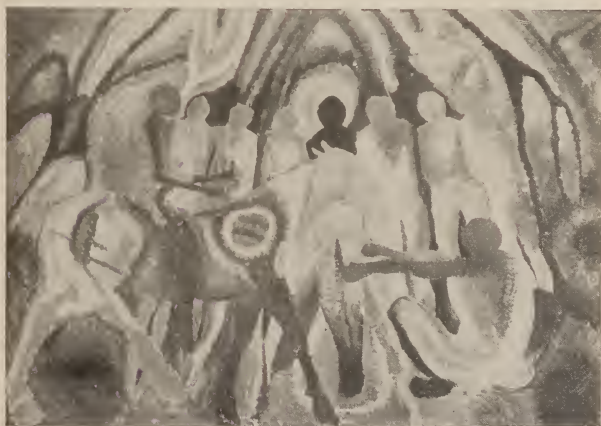
11438

P©G

**MUNCH, The farmyard**

Museum, Essen

Facsimile 13 × 17 in. \$ 12.—



11398

**MORGNER, Christ entering into Jerusalem**

Facsimile 12 $\frac{1}{2}$  × 18 in. \$ 12.—



11427

P©G

**MARC, Horses**

Museum, Essen

Facsimile 13 × 19 in. \$ 12.—

Facsimile 20<sup>1</sup>/<sub>2</sub> × 31<sup>1</sup>/<sub>2</sub> in. \$ 20.—



11405

**NOLDE, The enthusiasts**

Facsimile 16<sup>1</sup>/<sub>2</sub> × 14 in. \$ 12.—

This print is not sold separately but only  
within the complete series.



11413

**MACKE, Under the trees**

National Gallery, Berlin

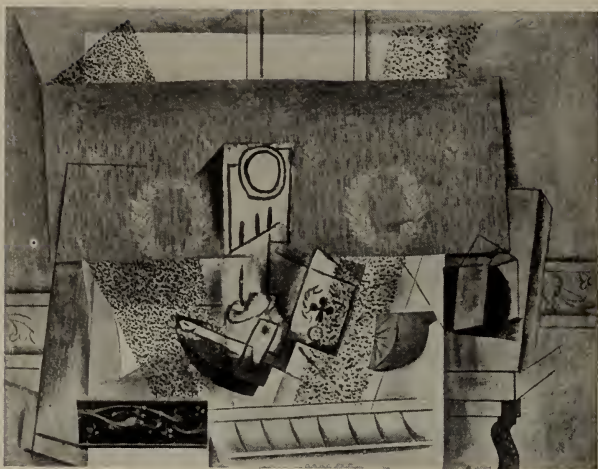
Facsimile  $14\frac{1}{2} \times 20$  in. \$ 12.—



11428

**SCHMIDT-ROTLUFF, Bathers**

Facsimile  $16\frac{1}{2} \times 14$  in. \$ 12.—



11411

**PICASSO, Still-life with red wallpaper**

Facsimile  $13 \times 16\frac{1}{2}$  in. \$ 12.—



11408

**LÉGER,**

**Two ladies in front of a mirror**

Facsimile  $20 \times 15\frac{1}{2}$  in. \$ 12.—





11414

**MATISSE, Gold-fishes**

Facsimile 17 × 14½ in. \$ 12.—



11420

**KLEE, The garden**

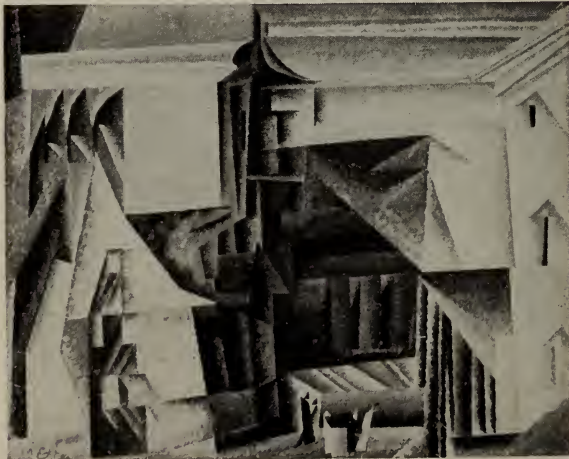
Facsimile 10 × 13 in. \$ 10.—



11425

**CARRÀ, Pine on the sea-shore**

Facsimile  $19\frac{1}{2} \times 14\frac{1}{2}$  in. \$ 12.—



11407

**FEININGER, Church**

Facsimile  $14 \times 18$  in. \$ 12.—



11 416

**KANDINSKY, Fanciful dream**

Facsimile 16 × 16 in. \$ 12.—



11 432

**SEVERINI, The restless dancer**

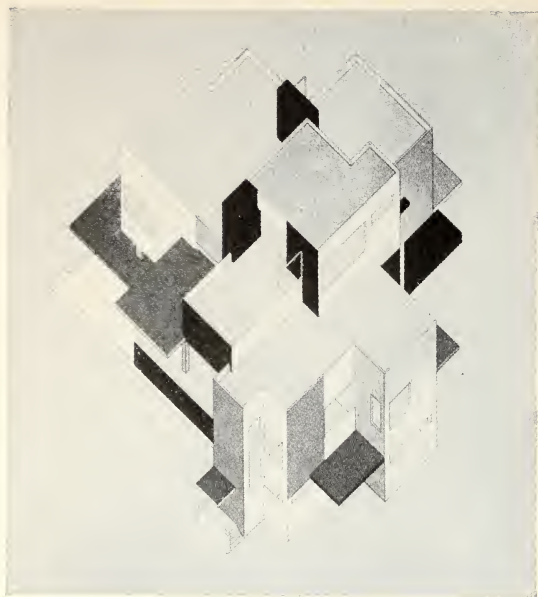
Facsimile 20½ × 15 in. \$ 12.—



11 426

**CHIRICO, Still-life**

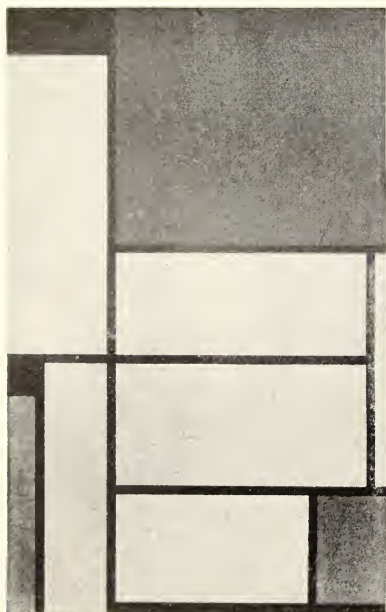
Facsimile 20 × 13 in. \$ 12.—



11434

**DOESBURG, Plan of a house for an artist**

Colored stone print  $18 \times 12\frac{1}{2}$  in. \$ 12.—

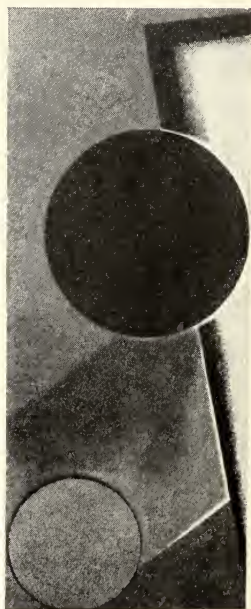


11419

**MONDRIAN,**

**Composition in red, blue and yellow**

Colored stone print  $11\frac{1}{2} \times 18\frac{1}{2}$  in. \$ 12.—



11431

**RODSCHENKO,**

**Composition  
with a black circle**

Colored stone print  
 $13\frac{1}{2} \times 5\frac{1}{2}$  in. \$ 10.—



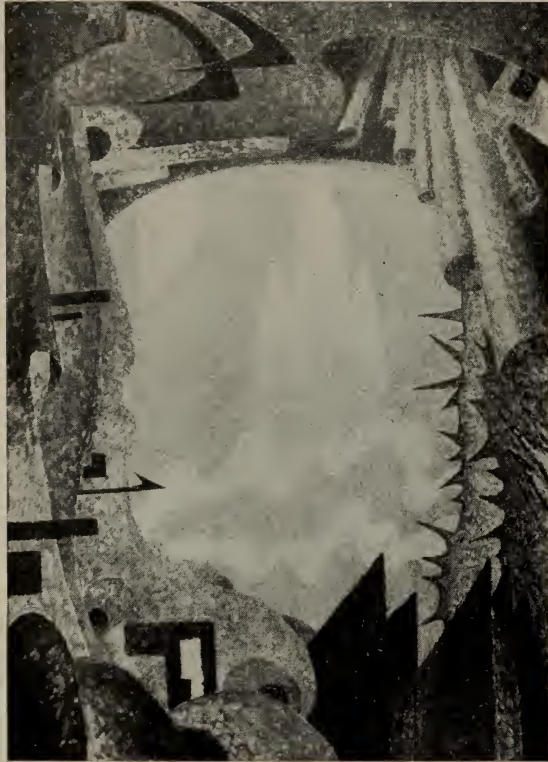
11439

P©G

**F. MARC, The tower of blue horses**

National Gallery, Berlin

Facsimile 29 × 18½ in. \$ 20.—



11440

**BÔ YIN RÂ, Temple of Eternity**

P©G

Facsimile  $31\frac{1}{2} \times 22\frac{1}{2}$  in. \$ 20.—

GREEK  
CLASSIC MONUMENTS

---

---

Copperplate-prints  
handmade

in large size from negatives  
of the Messbild Anstalt, Berlin



Copr. M. A.



9000

**ATHENS, Panoramic view of the Acropolis**

Photogravure 14 × 50 in. \$ 30.—

Copr. M. A.



9006

**ATHENS, Theseion**

Photogravure 23<sup>1</sup>/<sub>2</sub> × 27<sup>1</sup>/<sub>2</sub> in. \$ 20.—





9002

**ATHENS, Temple of Athena**

Photogravure  $31 \times 29\frac{1}{2}$  in. \$ 20.—



9005

**ATHENS, Olympieion**

Photogravure  $27\frac{1}{2} \times 31\frac{1}{2}$  in. \$ 20.—



9001

**ATHENS, Parthenon**

Photogravure 26 × 28 in. \$ 20.—



9007

**ATHENS, Parthenon**

Photogravure 29½ × 26½ in. \$ 20.—



9030

**MYCENAE, The Lion's Gate**

Photogravure  $32\frac{1}{2} \times 28$  in. \$ 20.—



9025

**KALAMBAKA, The Meteors**

Photogravure  $25 \times 32\frac{1}{2}$  in. \$ 20.—

Copr. M. A.



9004

**ATHENS, Erechtheion**

Photogravure  $21\frac{1}{2} \times 33\frac{1}{2}$  in. \$ 20.—

Copr. M. A.



9003

**ATHENS, Erechtheion (detail)**

Photogravure  $29 \times 24$  in. \$ 20.—



9021

**DELPHI, The sanctuary of Apollo**

Photogravure  $27 \times 27\frac{1}{2}$  in. \$ 20.—



9023

**DELPHI, The realm of Athena**

Photogravure  $27\frac{1}{2} \times 34$  in. \$ 20.—

Copr. M. A.



9015

**AEGINA, Temple of Aphaia**

Photogravure  $21\frac{1}{2} \times 33$  in. \$ 20.—

Copr. M. A.



9014

**AEGINA, Temple of Aphaia (detail)**

Photogravure  $27\frac{1}{2} \times 33$  in. \$ 20.—



9018

**CORINTH, Temple of Apollo**

Photogravure 31 $\frac{1}{2}$  × 35 in. \$ 20.—



9036

**SUNIUM, Temple of Poseidon**

Photogravure 26 $\frac{1}{2}$  × 34 in. \$ 20.—

Copr. M. A.



9022

**DELPHI,**  
**The sacred road and rock of the Sibyl**

Photogravure 26 $\frac{1}{2}$  × 28 in. \$ 20.—

Copr. M. A.



9034

**OLYMPIA, Total View**

Photogravure 24 $\frac{1}{2}$  × 34 in. \$ 20.—



# CORPUS IMAGINUM

---

---

A collection  
of  
over 700 authentic portraits

in

photogravure printed  
on van Gelder-paper  
18 × 13 in. \$ 2.— each  
(size of picture itself  
about 8 × 10")

★



8082 Bacon



8096 Chaucer



4781 Shakespeare



8080 Swift



8083 Milton



8124 Sterne



8087 R. B. Sheridan



4411 Shelley



8006 Burns



4715 Browning



4617 El. Barrett-Browning



2927 Byron



2841 Dickens



4184 Tennyson



4349 Bulwer-Lytton



4783 Thackeray



4780 Scott



8053 Goldsmith



8283 Wilde



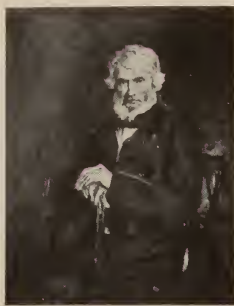
8276 Smiles



2947 Macaulay



4609 Ruskin



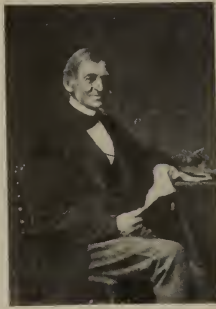
2946 Carlyle



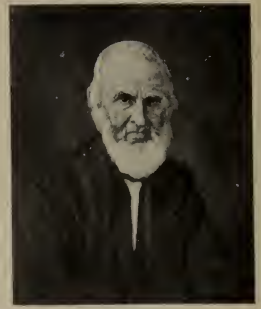
8017 Keats



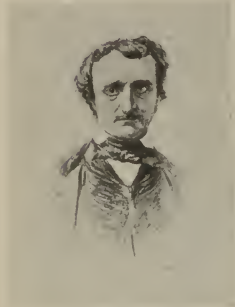
8067 Longfellow



4401 Emerson



8074 Whittier



8025 Poe



8249 Mark Twain



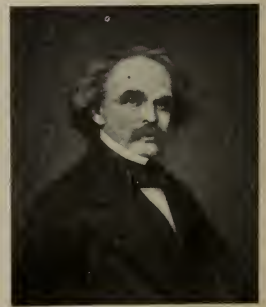
4797 Irving



4740 Whitman



8323 Maeterlinck



8075 Hawthorne



4420 Ibsen



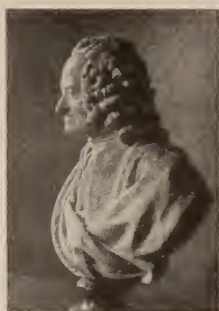
4185 Björnson



4354 Strindberg



8182 Molière



4745 Voltaire



8173 Racine



8091 Rousseau



4199 Zola



8291 Maupassant



8206 Turgenev



8097 Balzac



8200 Dostojewskij



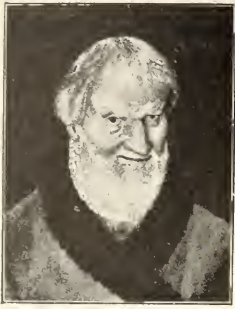
8203 Lermontow



4301 Tolstoj



8205 Puschkin



8246 Hans Sachs



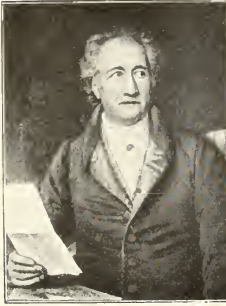
8105 Jean Paul



4701 Lessing



2934 Schiller



2917 Goethe



4406 Heine



8114 Gerh. Hauptmann



4154 Heibel



2961 Fontane



4730 Konr. Ferd. Meyer



4253 Keller



4195 Reuter



4239 Schopenhauer



4699 Nietzsche



2923 Hegel



2981 Pestalozzi



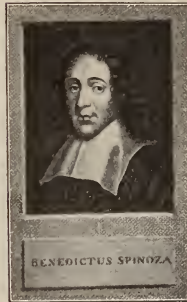
4418 Kant



8128 Wesley



6085 Descartes



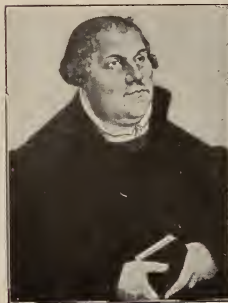
8153 Spinoza



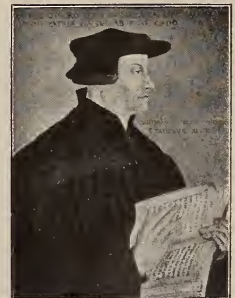
6089 Erasmus von Rotterdam



4250 Calvin



4717 Luther



8295 Zwingli



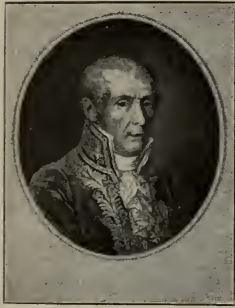
8281 Nicolaus Kopernicus



8247 Kepler



8275 Leonardo da Vinci



8159 Volta



8268 Paracelsus



8278 Guericke



8687 Laplace



8012 Stephenson



4646 Watt



8300 Fulton



8011 Newton



4614 Faraday

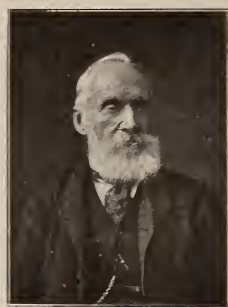




2939 Liebig



2933 Bunsen



8062 Lord Kelvin



4660 Emil Fischer



8683 M. and P. Curie



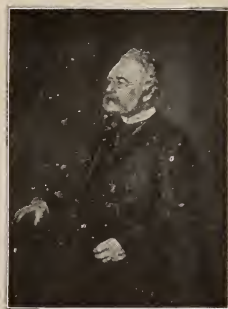
8003 Roentgen



8072 Ramsay



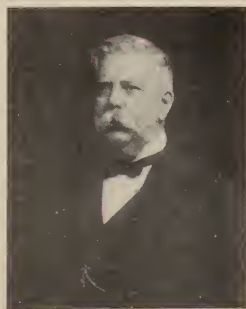
8266 Daimler



2988 Werner von Siemens



8199 Edison



8716 Westinghouse



8316 Wright



4661 van t'Hoff



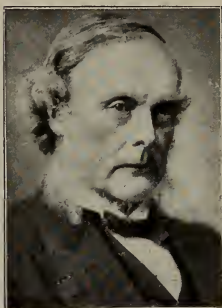
8118 Berzelius



8678 Finsen



1583 Helmholtz



8063 Lister



8262 Lublock



2970 Darwin



8663 Einstein



4669 Haeckel



8180 Sven Hedin



2935 A. v. Humboldt



8380 Amundsen



4695 Billroth



8092 Mendelejew



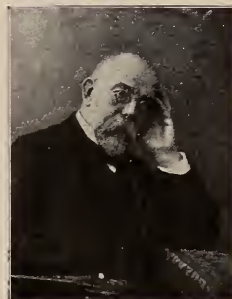
4653 Ostwald



4724 Pasteur



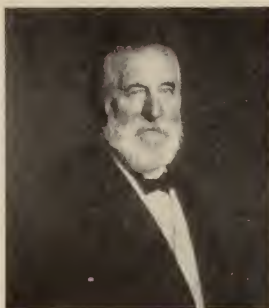
8058 Metschnikoff



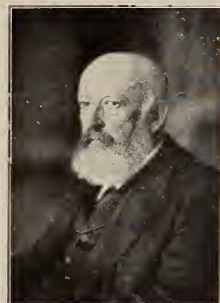
4342 Robert Koch



8088 Bier



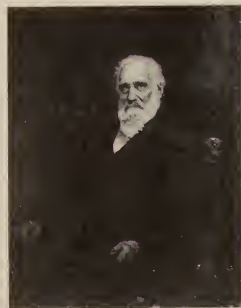
4798 v. Bergmann



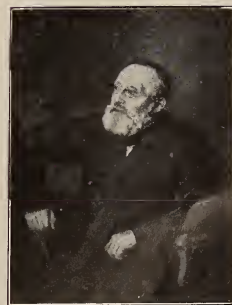
8065 von Baeyer



8151 Ehrlich



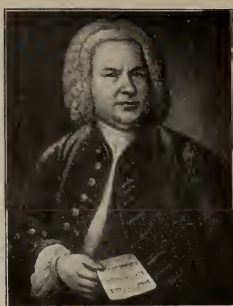
4344 Pettenkofer



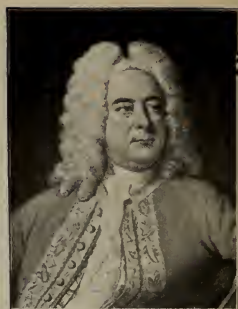
8022 Virchow



4786 Haydn



8119 Bach



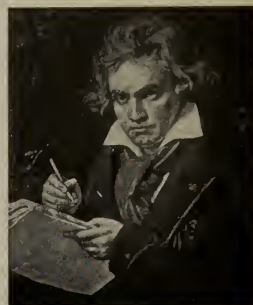
4736 Händel



4778 Mozart



4353 Gluck



2871 Beethoven



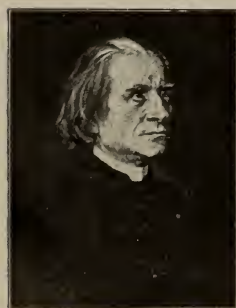
4197 Lortzing



2982 Karl Maria v. Weber



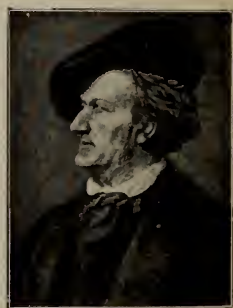
2928 Felix Mendelssohn



279 Liszt



2980 Chopin



278 Wagner



8379 Gounod



8667 Debussy



8664 Reger



4625 Schumann



8099 Peter Cornelius



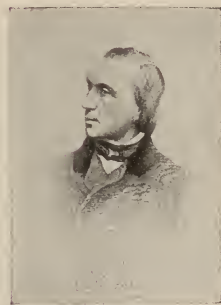
4255 Schubert



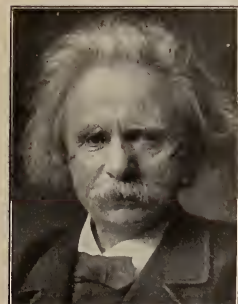
4700 Hugo Wolf



8093 Brahms



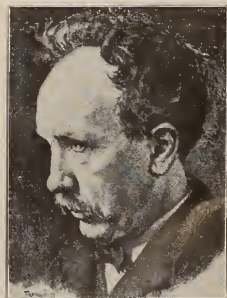
4714 Franz



4657 Grieg



8661 Rimsky-Korsakow



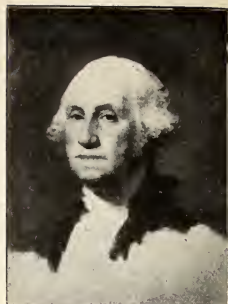
4737 Richard Strauß



4429 Franklin



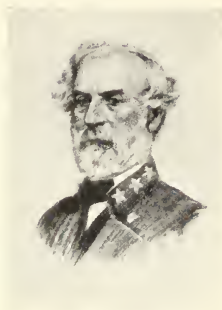
4637 Lincoln



4645 Washington



4790 Grant



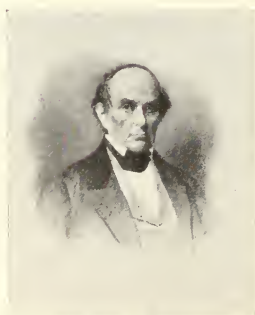
8328 Lee



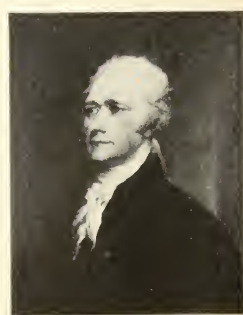
4754 Sherman



8394 Jefferson



4794 Webster



4627 Hamilton



8267 Farragut



4793 Beecher-Stowe



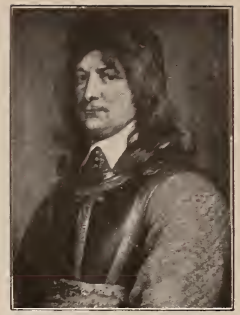
4352 Bancroft



8046 Gustav Adolf



8010 Cromwell



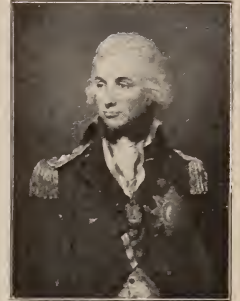
8111 The Great Elector



4654 Wellington



8207 Richelieu



4655 Nelson



8214 Frederick the Great



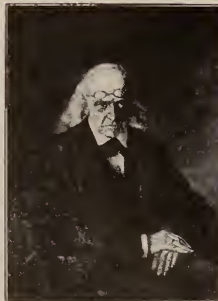
8658 Lenin



4663 Napoleon I.



2987 Curtius



2832 Mommsen



6619 Gladstone

# Complete List of the Collection "Corpus Imaginum"

The portraits contained in this list are partly reproduced from paintings, drawings, sculptures, lithographs and engravings, partly taken from life. We have made corresponding additions, abbreviated thus:

pt = painting, d = drawing, sc = sculpture, l = lithograph, e = engraving, lf = from life.

	Page		Page
8666 Abbe, lf . . . . .		Physicist	
4727 d'Albert, pt Katsch . . . . .		Musician	
4306 Allmers, pt Winter . . . . .		Poet	
8170 Ampère, d Tardieu . . . . .		Physicist	
8380 Amundsen, lf . . . . .	140	Explorer	
8106 Andersen, d Vogel . . . . .		Poet	
4348 Anzengruber, pt Meyer . . . . .		Poet	
4419 Arndt, pt Rötting . . . . .		Poet	
2973 Arnim, Achim v., pt Ströhlting . . . . .		Poet	
2956 Arnim, Bettina v., pt Arnim-Baerwalde . . . . .		Writer	
8149 Arrhenius, lf . . . . .		Physicist	
8174 —, pt Bergh . . . . .			
8305 Bach, C. v., lf . . . . .		Engineer	
4632 Bach, Joh. Seb., pt Hausmann . . . . .		Composer	
8076 — — pt Ihle . . . . .			
8119 — — pt Hausmann . . . . .	142		
8082 Bacon, pt Somer . . . . .	132	Statesman	
2921 Baer, K. E. v., pt Hagen-Schwarz . . . . .		Naturalist	
8065 Baeyer, lf . . . . .	141	Chemist	
8185 Bahr, lf . . . . .		Writer	
8097 Balzac, d Vogel . . . . .	135	Writer	
4352 Bancroft, pt Richter . . . . .	144	Historian	
4240 Barbi, Alice, pt László		Singer	
1435 Barnay, pt Alma-Tadema . . . . .		Actor	
4358 Bastian, lf . . . . .		Ethnographer	
4356 Bauernfeld, pt Parlaghy . . . . .		Poet	
8127 Baur, pt Kornbeck . . . . .		Theologian	
8253 Bauschinger, lf . . . . .		Mathematician	
8136 Bause, pt Graff . . . . .		Engraver	
4731 Bebel, lf . . . . .		Politician	
8682 Becquerel, lf . . . . .		Physicist	
4793 Beecher-Stowe, Harriet, d Richmond . . . . .	144	Writer	
4624 Beethoven, d Klöber . . . . .		Composer	
2871 —, pt Stieler . . . . .	142		
4201 —, pt Waldmüller . . . . .			
8701 —, pt Mähler . . . . .			
2948 Begas, lf . . . . .		Sculptor	
4635 Behring, pt Klein-Chevalier . . . . .		Physician	
4798 Bergmann, E. v., lf . . . . .	141	Physician	
4355 Berlioz, lf . . . . .		Composer	
8348 Bernoulli, Daniel, pt Huber . . . . .		Mathematician	
8676 Berthelot, M., lf . . . . .		Chemist	
8349 Berthollet, C. L., e Boilly . . . . .		Chemist	
8118 Berzelius, d Krüger . . . . .	140	Chemist	
8254 Bessemer, lf . . . . .		Engineer	
4776 Beuth, pt Krüger . . . . .		Statesman	
8088 Bier, lf . . . . .	141	Surgeon	
8189 Bierbaum, lf . . . . .		Poet	
4695 Billroth, d Gentz . . . . .		Physician	141
8116 Binding, lf . . . . .		Jurist	
8109 Bismarck, pt Krüger (1826) . . . . .		Statesman	
8068 —, lf (1871) . . . . .			
8069 —, lf (1877) . . . . .			
1664 —, pt Lenbach . . . . .			
1817 —, pt Lenbach . . . . .			
8070 —, lf (1886) . . . . .			
8018 —, lf (1890) . . . . .			
8270 —, lf (1892) . . . . .			
2608 —, pt Lenbach (1895)			
8455 —, lf (1895) . . . . .			
4185 Björnson, pt Werenskiöld . . . . .		Poet	134
8350 Black, Jos., pt Raeburn . . . . .		Chemist	
4426 Blücher, pt Gebauer . . . . .		General	
8293 Bode'schwingh, pt Schulte im Hofe . . . . .		Philanthropist	
2920 Boeckh, pt Begas . . . . .		Archaeologist	
4357 Böcklin, lf . . . . .		Painter	
4664 Bode, lf . . . . .		Art-Historian	
8108 Bölsche, lf . . . . .		Naturalist	
2932 Börne, pt Oppenheim . . . . .		Writer	
8309 Borsig, pt Krüger . . . . .		Engineer	
4738 Boyen, pt Stieler . . . . .		General	
8379 Brahe, Tycho, e Falk		Astronomer	
2952 Brahms, lf . . . . .		Composer	
8093 —, lf . . . . .	143		
8378 —, lf . . . . .			
8280 Brant, d Dürer . . . . .		Poet	
2992 Brentano, Clemens, pt Linder . . . . .		Poet	
8389 Brentano, Lujo, lf . . . . .		Pol. Economist	
2962 Brown, Madox, pt Rossetti . . . . .		Painter	
4715 Browning, Rob., pt Richmond . . . . .	132	Poet	
3101 —, d Talfourd . . . . .			
4617 Browning, E. Barrett, d Talfourd . . . . .		Poet	132
4629 Bruckner, lf . . . . .		Composer	
8271 Brunner, Const., lf . . . . .		Writer	
8179 Brunner, H., lf . . . . .		Jurist	
8158 Bryant, lf . . . . .		Poet	
2925 Buch, pt Begas . . . . .		Geologist	
8112 Buchner, lf . . . . .		Chemist	
8353 Buffon, pt Drouais . . . . .		Naturalist	
4428 Bülow v. Dennewitz, pt Gebauer . . . . .		General	
8332 Bülow, Hans v., lf . . . . .		Musician	
4349 Bulwer-Lytton, pt Maclise . . . . .		Writer	133
2933 Bunsen, pt Marx . . . . .		Chemist	139
8052 Bunyan, pt Sadler . . . . .		Writer	
2959 Burckhardt, pt Lendorff . . . . .		Art-Historian	



	Page		Page
4761 Bürger, pt Graff . . . . .	Poet	8319 Eliot, Ch. W., d Miel-	
8084 Burke, pt Reynolds . . . . .	Statesman	ziner . . . . .	Harvard Pres. . . . .
8306 Burns, pt Nasmyth . . . . .	Poet . . . . . 132	4401 Emerson, lf . . . . .	Writer . . . . . 134
8193 Busch, W., lf . . . . .	Poet	8292 Epinay, Mme d', pt	
2927 Byron, pt Westall . . . . .	Poet . . . . . 132	Liottard . . . . .	Writer
8272 Calhoun, lf Rady . . . . .	Statesman	6089 Erasmus of Rotter-	
4250 Calvin, anonym. pt . . . . .	Reformer . . . . . 137	dam, pt Holbein . . . . .	Humanist . . . . . 137
2946 Carlyle, pt Millais . . . . .	Writer . . . . . 133	8315 Ericson, anonym. pt . . . . .	Inventor
8677 Carnot, Sadi, l Boilly	Physicist	8390 Eucken, lf . . . . .	Philosopher
8660 Chamberlain, H. St., lf	Physician	8260 Eugene of Savoy, pt	
2943 Chamisso, pt Reinick	Poet	Kupetzky . . . . .	General
8347 Charpentier, lf . . . . .	Composer	8286 Euler, pt Darbes . . . . .	Mathematician
8096 Chaucer, anonym. pt . . . . .	Poet . . . . . 132	8248 Eyth, pt Hornecker . . . . .	Engineer
8354 Cherubini, d Belliard . . . . .	Composer	4421 Falk, lf . . . . .	Statesman
4697 Chodowiecki, pt Graff	Painter	4614 Faraday, pt Phillips . . . . .	Physicist . . . . . 138
2980 Chopin, pt Stattler . . . . .	Composer . . . . . 142	8267 Farragut, lf . . . . .	Admiral . . . . . 144
8009 Claudius, pt Leisching	Poet	8171 Fechner, lf . . . . .	Physicist
8675 Clausius, R., d Herf-		3538 Feuerbach, Ans., pt	
ling . . . . .	Physicist	self-portr. . . . .	Painter
4795 Clay, lf . . . . .	Statesman	4667 Feuerbach, Ludw., d	
4251 Coler, pt Scheurenberg	Physician	Philipp . . . . .	Philosopher
8162 Comenius, anonym. pt	Pedagogue	8014 Fichte, d Bury . . . . .	Philosopher
4796 Cooper, J. F., lf . . . . .	Writer	8678 Finsen, N. R., lf . . . . .	Physician . . . . . 140
8451 Cooper, P., lf . . . . .	Philanthropist	4660 Fischer, Emil, lf . . . . .	Chemist . . . . . 139
8277 Cornille, e Vallet . . . . .	Poet	2979 Fischer, Kuno, pt Rit-	
2999 Cornelius, Peter v., pt		ter . . . . .	Philosopher
Begas . . . . .	Painter	4799 Flechsig, lf . . . . .	Physician
8099 Cornelius, Peter lf . . . . .	Composer . . . . . 143	2961 Fontane, pt Fechner . . . . .	Poet . . . . . 136
8010 Cromwell, anonym. pt	Statesman . . . . . 145	8142 Forster, J. R., pt Graff	Geographer
8692 Crookes, pt Ludovici . . . . .	Physicist	8699 France, Anatole, lf . . . . .	Writer
8683 Curie, M. and P., lf . . . . .	Physicists . . . . . 139	8163 Francke, d Vogel . . . . .	Theologian
4666 Curschmann, H., lf . . . . .	Physician	4429 Franklin, B., pt Du-	
4771 Curschmann, F., pt		plexissis . . . . .	Statesman . . . . . 144
Magnus . . . . .	Composer	4714 Franz, R., lf . . . . .	Composer . . . . . 143
2987 Curtius, pt Koner . . . . .	Archaeologist 145	8398 Franzius, lf . . . . .	Engineer
8077 Cuvier, d Mauris . . . . .	Naturalist	8688 Fraunhofer, anonym. d.	Physicist
8000 Czerny, V., lf . . . . .	Physician	8212 Frederick the Great,	
8590 Daguerre, l Grévedon	Inventor	pt Weidemann . . . . .	King of Prus-
4643 Dahn, lf . . . . .	Poet		sia
8266 Daimler, lf . . . . .	Engineer . . . . . 139	5243 —, pt Pesne (1739)	
2970 Darwin, lf . . . . .	Naturalist . . . . . 140	5922 —, pt Pesne (1740) . . . . .	
4402 —, pt Collier . . . . .		8215 —, pt Knobelsdorff . . . . .	
8693 Davy, Humphrey, pt		8216 —, pt Ziesenis	
Lawrence . . . . .	Inventor	(1770) . . . . .	
8667 Debussy, lf . . . . .	Composer . . . . . 143	8213 —, pt Francke . . . . .	
8303 Dehmel, lf . . . . .	Poet	4747 —, pt Cunningham . . . . .	
8194 Delbrück, M. Fr. R., lf	Statesman	5884 —, pt Cunningham . . . . .	
4639 Dernburg, H., pt No-		8214 —, pt Graff . . . . .	
ster . . . . .	Jurist	4155 Frederick III, lf (1871)	German Emperor
6085 Descartes, pt Hals . . . . .	Philosopher . . . . . 137	1617 —, pt Angeli . . . . .	
8166 Devrient, L., anonym.		8111 Frederick William,	
pt . . . . .	Actor	the Great Elector, pt	
2841 Dickens, pt Maclise . . . . .	Writer . . . . . 133	Harnemann . . . . .	. . . . . 145
4779 —, pt Frith . . . . .		8130 Frederick William II,	
8287 Diderot, pt Lewitzki . . . . .	Poet	pt Graff . . . . .	King of Prussia
8178 Diels, lf . . . . .	Philologist	8197 Frederick William III,	
8327 Diesel, lf . . . . .	Engineer	pt Krüger . . . . .	King of Prussia
8183 Diesterweg, lf . . . . .	Pedagogue	8198 Frederick William IV.,	
8059 Dilthey, lf . . . . .	Philosopher	pt Krüger . . . . .	King of Prussia
8200 Dostojewskij, pt Perow	Writer . . . . . 135	2991 Freiligrath, pt Hasen-	
8240 Dörpfeld, lf . . . . .	Archaeologist	clever . . . . .	Poet
8251 Draeseke, d Sterl . . . . .	Composer	8304 Frenssen, lf . . . . .	Writer
4404 Droste-Hülshoff, lf . . . . .	Poet	4768 Fresenius, d Hoffmann	Chemist
2931 Droysen, pt Bende-		2954 Freytag, pt Stauffer-	
mann . . . . .	Historian	Bern . . . . .	Poet
8685 Drygalski, lf . . . . .	Explorer	4763 Fries, d Müller . . . . .	Philosopher
8690 Dühring, E., lf . . . . .	Philosopher	4706 Fröbel, d Rohrbach . . . . .	Pedagogue
4150 Du Bois-Reymond, pt		8300 Fulton, pt self-portr.	Inventor . . . . . 138
Koner . . . . .	Physiologist	8329 Gabelsberger, anonym l	Inventor
4696 Dvorak, lf . . . . .	Composer	4734 Gade, Niels, lf . . . . .	Composer
8659 Ebert, Fr., pt Marx . . . . .	Statesman	6521 Galilei, pt Sustermans	Physicist
4151 Ebner-Eschenbach, lf . . . . .	Writer	8188 Ganghofer, lf . . . . .	Writer
4784 Ebstein, lf . . . . .	Physician	4607 Gauß, pt Jensen . . . . .	Mathematician
8199 Edison, d Grosser . . . . .	Inventor . . . . . 139	8356 Gay-Lussac, l Boilly	Physicist
4200 Ehrenberg, pt Radtke	Naturalist	4741 Gebel, d Boor . . . . .	Poet
8151 Ehrlich, lf . . . . .	Physician . . . . . 141	4620 Gellert, pt Graff . . . . .	Poet
4758 Eichendorff, d Kugler.	Poet	2938 Genelli, pt Marshall . . . . .	Painter
8663 Einstein, Alb., lf . . . . .	Physicist . . . . . 140		

8357	Geoffroy Saint-Hilaire, l Boilly	Zoologist	2978	Ease, pt Dürck	Theologian
4400	George, Henry, lf	pol. Economist	2951	Hauptmann, Gerh., lf	Poet
8665	George, Stefan, pt Lepsius	Writer	8114	—, lf (1909)	Poet . . . . 136
4619	Gerhardt, Karl, lf	Physician	8187	Hauptmann, Karl, lf	Poet
2985	Gervinus, pt Osterley	Historian	8075	Hawthorne, pt Smith	Writer . . . . 134
8176	Gierke, lf	Jurist	4786	Haydn, pt Hoppner	Composer . . . 142
2957	Giesebrecht, pt Grab- hein	Historian	8042	—, d Danez	
6619	Gladstone, pt Hamilton	Statesman . . 145	4154	Hebbel, pt Rahl	Poet . . . . 136
4707	Gleim, pt Ramberg	Poet	8180	Hedin, lf	Explorer . . . 140
4353	Gluck, pt Duplessis	Composer . . . 142	2923	Hegel, pt Schlesinger	Philosopher . 137
4108	—, sc Houdon		4406	Heine, l Oppenheim	Poet . . . . 136
4425	Gneisenau, pt Gebauer	General	4646	—, pt Gassen	
4763	Gneist, pt Lepsius	Jurist	8027	—, d Diez	
8330	Gobineau, pt de la Tour	Writer	8148	—, pt Laynaud	
8201	Gogol, pt Moller	Writer	8120	Heinse, pt Eich	Writer
4152	Görres, pt Settegast	Historian	1583	Helmholtz, pt Knaus	Physicist . . 140
2977	Goethe, pt Kraus (1775)	Poet	4608	—, pt Lenbach	
4613	—, sc Melchior (1775)		8680	—, pt Lenbach	
4605	—, d Kraus (1776)		8145	Henry, Prince of Prus- sia, pt Graff	
2914	—, pt May (1779)		4652	Herder, pt Tischbein	Poet
8016	—, pt Kaufmann (1787)		8129	—, pt Graff	
2915	—, pt Tischbein (1787)		8054	Herschel, pt Abbott	Astronomer
8090	—, pt Tischbein (detail)		4735	Hertwig, Os., lf	Anatomist
8104	—, d Lips (1791)		8060	Hertz, Hcinr., lf	Physicist
4769	—, pt Kügelgen (1810)		8028	Herz, Henriette, pt Graff	Writer
4602	—, pt Egloffstein		8202	Herzen, A. I., pt Gay	Publicist
4616	—, pt Egloffstein		8671	Hesse, lf	Writer
8190	—, sc Schadow (1816)		8100	Heyse, lf	Poet
4636	—, d Jagemann (1817)		8036	Hiller, pt Graff	Composer
2916	—, sc Rauch (1820)		8681	Hindenburg, pt Triebsch	General
4770	—, pt Kolbe (1822)		4658	His, W., lf	Physician
2917	—, pt Stieler (1828)		8073	His jun., W., lf	Physician
2918	—, d Schwrdgeburth (1832)		8712	Hittori, lf	Physicist
8345	—, sc David d'Angers		4661	van t'Hoff, lf	Chemist . . . 140
8353	Goldsmith, pt Reynolds	Writer . . . . 133	8265	Hofmann, E. Th. A., d Hensel	Writer
8379	Gounod, d Mielziner	Composer . . . 143	2965	Hoffmann von Fallers- leben, pt Henseler	Poet
8103	Gräfe, d Wildt	Physician	8186	Hoffmansthal, lf	Poet
4603	Graff, pt self portr.	Painter	2966	Hofmann, A. W., pt Fechner	Chemist
4790	Grant, anonym. pt	General . . . . 144	8318	Holtei, pt Kreyher	Writer
8673	Grashof, lf	Engineer	8713	Hughes, D. E., lf	Physicist
4760	Greif, pt Thoma	Poet	2935	Humboldt, A. v., d Krüger	Naturalist . . 140
4657	Grieg, lf	Composer . . . 143	4755	—, pt Begas	
2995	—, pt Werenskiöld		8154	—, pt Stieler	
2953	Grillparzer, pt Pen- ther	Poet	4682	Humboldt, W. v., d Krüger	Statesman
4405	Grimm, the brothers Jacob and Wilh., lf	Writers	8098	Hume, David, anonym. pt	Philosopher
4622	Grimm, Wilh., lf	Writer	8079	Hume, Joseph, pt Walton	Politician
8195	Grimm, Herm., lf	Writer	4687	Humperdinck, lf	Composer
2968	Groth, pt Bokelmann.	Poet	8321	—, d Laboschin	
8358	Grün, Anast., l Mar- rastoni	Poet	8282	Hutten, Ulrich v., an- onym e	Humanist
4153	Gruson, pt Koner	Engineer	4610	Huxley, lf	Naturalist
8278	Guericke, pt Huth	Physicist . . . 138	4420	Ibsen, lf	Poet . . . . 134
4422	Gussenbauer, pt l' Ale- lemand	Surgeon	4759	Iifland, anonym. pt	Actor
8046	Gustav Adolf, anonym pt	King of Sweden 145	8029	Immermann, d. Lessing	Poet
2990	Gutzkow, lf	Poet	4797	Irving, W., d Martin	Writer . . . . 134
4252	Haeckel, lf	Naturalist	8255	Jackson, Andrew, lf	Statesman
4669	—, lf		4407	Jacobsen, J. P., pt Josephson	Writer
2983	Hamerling, pt Prinz- hofer	Poet	4631	Jahn, d Engelbach	Pedagogue
4627	Hamilton, pt Trumbull	Statesman . . 144	8394	Jefferson, Th., lf	Statesman . . 144
4736	Händel, pt Hudson	Composer . . . 142	4633	Jenner, pt Northcote	Physician
8089	Hardenberg, pt Law- rence	Statesman	8020	Jhering, lf	Jurist
4689	Harnack, lf	Theologian	4412	Joachim, lf	Musician
4705	Hartmann, Ed. v., lf	Philosopher	4649	—, pt Sargent	
8181	—, pt Schuite im Hofe		8086	Johnson, Samucl, pt Barry	Lexicographer

	Page
2950 Karl August, Grand- duke of Sax. Weimar, pt Lips	
8017 Keats, pt Hilton	Poet . . . . 133
8030 Kekulé, Fr. A., pt Angeli	Chemist
4253 Keller, Gottfr., lf.	Poet . . . . 136
8062 Kelvin, Lord, lf.	Physicist . . 139
8247 Kepler, anonym. pt	Astronomer . 138
8110 Kestner, Charl. (Lotte Buff), d Giese	
4341 Kiepert, lf.	Geographer
8126 Kirchhoff, lf.	Physicist
4659 Kleist, H. v., anonym. d	Poet
4302 Klinger, lf.	Painter
4709 Klopstock, pt Juell	Poet
4342 Koch, R., lf.	Bacteriologist 141
4662 Kohler, J., lf.	Jurist
8299 König, Friedr., anonym. pt	Inventor
8281 Kopernikus, e Stimmer	Astronomer . 138
4726 Kopisch, d Führich	Poet
4752 Körner, anonym. pt	Poet
1832 Kossuth, Ludw., pt Parlaghy	Statesman
8164 Kotzebue, anonym. pt	Writer
4628 Krafft-Ebing, lf.	Physician
8243 Krupp, Alfred, lf.	Engineer
8256 Kufmaul, lf.	Physician
8061 Lagarde, lf.	Philosopher
8363 Lamarck, l Boilly	Naturalist
8001 Lamprecht, lf.	Historian
8241 Langbehn, J., pt Thoma	Writer
8273 Langen, E., pt Peter- sen	Engineer
8399 —, and N. Otto, double portr. sc Lederer	Engineers
4744 Lanner, pt Krepp	Composer
8687 Laplace, pt Belliard	Mathematician 138
4403 Lassalle, Ferd., lf.	Politician
4702 Lavater, d Speissegger	Writer
8364 Lavoisier, l Laurent	Chemist
8328 Lee, Robert, d Miel- ziner	General . . . 144
4757 Leibniz, anonym. pt	Philosopher
4408 Lenau, pt Mayer	Poet
8658 Lenin, pt Altman	Politician . . 145
4181 Leo XIII., pt Lászlo	Pope
8275 Leonardo da Vinci, d self-portr.	Painter . . . 138
8225 Leopold of Anhalt- Dessau, pt Pesne	General
4343 Lepsius, pt Biermann	Geologist
8203 Lermontow, pt Perow	Writer . . . 135
1599 Lessing, G. E., pt Tischbein	Poet
4701 —, pt Graff	
4713 —, pt May	
4254 Lessing, K. Fr., pt Sohn	Painter
4351 Leyden, pt Israels	Physician
8019 —, lf.	
8023 Lichtenberg, G. Chr., anonym. pt	Physicist
8324 Lichtwark, pt Kalck- reuth	Art-Historian
4626 Liebermann, pt self- portr.	Painter
2939 Liebig, pt Trautschold	Chemist . . . 139
4417 Liliencron, d Philipp	Poet
8302 —, l Olde	
4637 Lincoln, Abr., pt Mar- shall	Statesman . . 144
8392 —, lf.	

	Page
2924 Lind, Jenny, pt Mag- nus	Singer
4750 —, pt Asher	
8306 Linde, Karl, lf.	Inventor
8715 Lindenthal, d Turner	Engineer
2986 Lingg, lf.	Poet
8209 Linné, pt Lundberg	Botanist
8365 List, Friedr., l Krie- huber	Pol. Economist
8063 Lister, lf.	Surgeon . . . 140
2963 Liszt, Franz, pt Scheffer	Composer
279 —, pt Lenbach	
8296 —, d from photo	
4694 Liszt, Franz, lf.	Jurist
8055 Locke, pt Brownover	Philosopher
8067 Longfellow, lf.	Poet . . . . 134
4197 Lortzing, pt Souchon	Composer . . 142
8024 Lotze, lf.	Philosopher
4739 Louis Ferdinand, Prince of Prussia, pt Steuben	
2556 Louise, Queen of Prus- sia, pt Grassi	
4668 — — —, pt Tisch- bein	
8117 — — —, pt Kügel- gen	
4712 Löwe, pt Grün	Composer
8262 Lubbock, (Lord Ave- bury), pt Herkomer	Naturalist . . 140
4774 Ludwig I., King of Ba- varia, pt Kaubach	
4638 Ludwig, Otto, lf.	Writer
4413 Luther, Martin, pt Cranach (1526)	Reformer
4415 — —, pt Cranach (1533)	
4717 — —, pt Cranach (1546)	
8041 — —, anonym pt	
8168 — —, pt Cranach	
4414 Luther, Catharina, pt Cranach	
8007 Lyell, pt Dickinson	Naturalist
2947 Macaulay, pt Grant	Historian . . 133
8152 Mach, lf.	Physicist
8323 Maeterlinck, lf.	Writer . . . 134
8289 Mahler, lf.	Musician
8196 Malthus, e Linnell	Pol. Economist
4711 Marcks, Erich, lf.	Historian
8698 Marconi, lf.	Inventor
8288 Maria Theresia, pt Liotard	Empress of Austria
4710 Marx, Karl, lf.	Politician
8291 Maupassant, lf.	Writer . . . 135
8066 Maxwell, pt Dickinson	Physicist
4606 Mayer, Rob., lf.	Naturalist
4721 Melanchthon, pt Cr- nach	Reformer
8169 —, pt Cranach	
8092 Mendelejew, lf.	Chemist . . . 141
2929 Mendelssohn-Barthol- dy, F., pt Steinbrück	Composer
2928 — —, pt Magnus	
4623 — —, pt Vernet	
4756 Mendelssohn, Moses, pt Graff	Philosopher
4160 Menzel, pt Magnus	Painter
2600 —, pt Koner	
8058 Metschnikoff, lf.	Bacteriologist 141
4730 Meyer, K. F., d Stauf- fer-Bern	Poet . . . . 136
2960 Meyerbeer, pt Richter	Composer
4612 Mill, J. St., lf.	Pol. Economist
8307 Miller, Oskar, lf.	Engineer
8083 Milton, pt Plas	Poet . . . . 132
4651 Mitscherlich, d Krüger	Chemist
4743 Möbius, lf.	Physician

	Page
2976 Mohl, R. v., pt Lenbach	
8182 Molière, e Garneray	135
2994 Moltke, lf	
1616 —, pt Lenbach	
1584 Mommsen, pt Knaus	
2832 —, pt Lenbach	145
8032 —, pt Lenbach	
8161 Montaigne, d Dumontier	
8085 Moore, Thomas, pt Jackson	
4725 Möricke, d Weiss	
4350 Mozart, d Stock	
4778 —, pt Tischbein	142
4156 Müller, Joh., pt Begas	
8095 Multatuli, (Ed. Douwes Dekker), lf	
8662 Mussorgski, pt Repin	
8397 Nachtigal, lf	
751 Napoleon I., (on horseback), pt David	
4630 —, d Vigneux	
4615 —, d Guérin	
4663 —, pt David	
7042 —, pt Vernet	145
8575 Naumann, Fr. pt Liebermann	
8204 Nekrassow, pt Kramskoi	
4655 Nelson, Horatio, pt Abbott	
4785 Nernst, lf	145
4198 Neumayer, pt Philipp	
8165 Newman, J. H., pt Deane	
8011 Newton, I., pt Vanderbank	
8144 Nicolai, pt Graff	138
4718 Niebuhr, d Seidler	
2955 Nietzsche, lf	
4699 —, d Philipp	137
8257 —, lf	
4187 Nikisch, pt Pinkow	
2942 Nordenskjöld, pt Rosen	
8261 Novalis, (Hardenberg), e Eichens	
8320 O'Connell, pt Gubbins	
8034 Oeser, pt Graff	
4621 Ohm, anonym, pt	
4698 Olshausen, lf	
4708 Orth, lf	
4753 Ostwald, pt Klamroth	141
8274 Otto, N. A., pt Sinkel	
8399 —, and E. Langen, double portr. sc. Lederer	
2993 Overbeck, Fr., pt Henning	
8078 Owen, Rich., pt Pickersgill	
8326 Paganini, d Ingres	
8268 Paracelsus, pt Rubens	138
8684 Parsons, Ch., lf	
4724 Pasteur, lf	141
8105 Paul, Jean (Richter) d Vogel	
8208 —, pt Meyer	136
4690 Paulsen, lf	
8711 Penck, lf	
2974 Perthes, pt Gröcker	
2981 Pestalozzi, pt Schöner	137
8264 Peter the Great, pt Kupetzky	
4344 Pettenkofer, pt Kaulbach	
	141

	Page
4691 Pfeleiderer, lf	
4430 Pius X., lf	
8175 Planck, lf	
8107 Plate, lf	
8155 Platen-Hallermund, A. v., anonym. pt	
8025 Poe, d Gentz	134
8081 Pope, A., pt Kneller	
8689 Priestley, J., pt Stuart	
8393 Puccini, lf	
8401 Purcell, pt Clostermann	
8205 Puschkin, pt Tropinin	135
2989 Raabe, W., pt Fechner	
4773 Rabener, pt Graff	
4789 Racine, anonym. pt	
8173 —, anonym. pt	135
8294 Radetzky, pt Kriehuber	
4409 Raimund, pt Franck	
8072 Ramsay, lf	139
2941 Ranke, pt Schrader	
8672 Ratzel, lf	
2937 Rauch, pt Henning	
8263 Redtenbacher, Ferd., d Hähnisch	
8664 Reger, d Weinhold	143
8245 Reichenbach, G. v., pt Stieler	
4766 Reichenbach, K. v., d Hoffmann	
8004 Reinick, R., self-portr.	
2949 Renan, lf	
8370 Ressel, l Marastoni (1868)	
4195 Reuter, pt Wulff	136
8207 Richelieu, pt Champagne	
1284 Richter, Ludw., pt Pohle	
4305 Richthofen, pt Hellhoff	
8308 Rieppel, lf	
8661 Rimsky-Korsakow, pt Serow	
2922 Ritter, pt Begas	143
4693 Rodenberg, lf	
4345 Roentgen, lf	
8003 —, lf	139
2975 Roon, lf	
8094 Roscher, lf	
4732 Rose, H., d l'Allemand	
4410 Rosegger, lf	
8703 Rossini, pt Daffinger	
8091 Rousseau, pt Ramsay	135
8285 —, pt Latour	
4157 Rubinstein, lf	
8191 Rubner, lf	
4416 Rückert, pt Froriep	
4609 Ruskin, lf	133
8005 Ruyter, M. de, pt Bol	
8246 Sachs, Hans. pt Heineysen	
8371 Saint-Simon, C. H. v., e Detroy	
2969 Savigny, pt Krüger	
2919 Schadow, pt Hübner	
4427 Scharnhorst, pt Gebauer	
2944 Scheffel, pt Werner	
2936 Schelling, pt Begas	
8258 Schichau, lf	
8033 Schill, d Buchhorn	
4670 Schiller, pt Höflinger (1781)	
2934 —, pt Graff (1791)	136
4671 —, pt Simanowiz (1793)	

	Page		Page
4672 Schiller, sc Dannecker (1794)		4642 Spohr, self-portr.	Composer
4688 —, pt Simanowiz (1794)		4634 —, lf	
4676 —, pt Simanowiz (1794)		8325 Stein, Charlotte v., self-portr.	
4673 —, d Weitsch (1804)		4733 Stein, Frh. vom, pt Rinklake	Statesman
4674 —, pt Tischbein (1805)		8297 —, d Olivier	
4675 —, pt Kügelegen (1805)		4158 Steinheil, pt Thiersch	Physician
4677 Schiller, Charlotte, pt Simanowiz		8252 Stendhal, (Henri Beyle), pt Södermark	Writer
8064 Schillings, lf	Musician	8012 Stephenson, pt Pickersgill	Engineer . . . 138
2930 Schinkel, pt Schmidt	Architect	8124 Sterne, Lawrence, pt Reynolds	Writer . . . 132
4767 Schleiden, d Hoffmann	Naturalist	8008 Stevenson, R. L., d Spence	Writer
4650 Schleiermacher, anonym pt	Theologist	8400 —, lf	
8113 Schmidt, Erich, lf	Historian	4787 Stiifer, d Daffinger	Poet
4213 Schmoller, pt Lenbach	Pol. Economist	4681 Storm, lf	Poet
2996 Schnaase, pt Wiegmann	Historian	4737 Strauß, Rich., d Faragó	Composer . . . 143
4600 Schnorr v. Carolsfeld, pt Gey	Painter	8311 —, lf	
8259 Schön, Theodor, e Eichens	Statesman	8446 Strauß, Joh., pt Eisenmenger	Composer
2958 Schönbein, pt Beltz	Chemist	4354 Strindberg, lf	Writer . . . 134
8184 Schönherr, lf	Writer	8177 Stumpf, lf	Psychologist
4239 Schopenhauer, pt Wulff	Philosopher . 137	8210 Sueß, e Cossmann	Geologist
4753 —, pt Göbel		8331 Swedenborg, pt Kraft	Theosophist
4788 Schroeter, Corona, pt Graff	Actress	8080 Swift, pt Jervas	Writer . . . 132
8002 Schubart, C. Fr. D., pt Oelenhainz	Writer	2972 Sybel, pt Rötting	Historian
4255 Schubert, Franz, d Rieder	Composer . . . 143	4772 Taubert, pt Magnus	Composer
8250 Schuckert, lf	Engineer	4184 Tennyson, pt Herkomer	Poet . . . 133
4625 Schumann, Rob., d Philipp	Composer . . . 143	4782 —, d Arnault	
8056 Schumann, Clara, d Lenbach	Musician	4783 Thackeray, pt Lawrence	Writer . . . 133
8704 Schumann, Rob. and Clara, l Kaiser double-portrait		8157 Thae, pt Lose	Agriculturist
8040 Schütz, H., anonym pt	Composer	4337 Thoma, self-portr.	Painter
2940 Schwind, pt Lenbach	Painter	8121 Thünen, lf	Pol. Economist
4780 Scott, Walter, pt Landseer	Writer . . . 133	4749 Tieck, pt Vogel	Writer
2964 Semper, Gottfr. pt Lenbach	Architect	4679 Tobler, lf	Philologist
8015 Seydlitz, anonym pt	General	8284 Toepffer, pt Massot	Writer
4719 Sgambati, d Gentz	Composer	4301 Tolstoj, pt Repin	Writer . . . 135
4781 Shakespeare, anonym pt	Poet . . . 132	2997 Treitschke, pt Teschendorf	Historian
8691 Shaw, lf	Writer	4256 —, lf	
4411 Shelley, pt Curran	Poet . . . 132	8156 Tschaikowsky, lf	Composer
4792 Sheridan, P. H., anonym e	General	8573 Tschechow, pr Braz	Writer
8087 Sheridan, R. Br., d Russell	Poet . . . 132	8206 Turgenjew, pt Perow	Writer . . . 135
4754 Sherman, anonym e	General . . . 144	8249 Mark Twain, lf	Writer . . . 134
2988 Siemens, Werner, pt Lenbach	Engineer . . . 139	8312 —, d Mielziner	
8269 Siemens, Wilh., lf	Engineer	8013 Tyndall, pt Hamilton	Physicist
4742 Sievers, lf	Philologist	4604 Uhde, self-portr.	Painter
8709 Silcher, l. Löffler	Composer	4159 Uhländ, pt Morff	Poet
4618 Simson, E. v., pt Pohle	Jurist	4722 Vahlen, lf	Philologist
8708 Skriabin, d Pasternak	Composer	8244 Verhaeren, lf	Poet
4692 Slaby, lf	Engineer	4641 Verdi, pt Metlicovitz	Composer
8276 Smiles, lf	Writer . . . 133	8317 —, lf	
8717 Smith, Adam, anonym e	Pol. Economist	4257 Virchow, lf	Physician
4656 Sontag, Henriette, pt Delaroche	Singer	8022 —, pt Lenbach	. . . . . 141
4611 Spencer, lf	Philosopher	2967 Vischer, Fr. Th., pt Weißer	Historian
8153 Spinoza, e Lips	Philosopher . 137	8159 Volta, e Garavaglia	Physicist . . . 138
2971 Spielhagen, pt Weiß	Writer	4745 Voltaire, sc. Houdon	Writer . . . 135
8310 Spitteler, lf	Writer	4704 Voß, pt Schöner	Poet
		8115 Wach, lf	Jurist
		4665 Wagner, Ad., lf	Pol. Economist
		278 Wagner, Rich., pt Lenbach	Composer . . . 142
		4686 —, pt Lenbach	
		8298 —, lf	
		8679 Wagner, Herm., lf	Geographer
		4746 Waldeyer, lf	Physician
		8396 Wallace, lf	Naturalist
		4645 Washington, pt Stuart	General . . . 144
		4646 Watt, pt Breda	Inventor . . . 138
		4304 Weber, Albr., pt Schlessner	Orientalist

	Page
2982 Weber, Karl Maria v., pt Bardua . . . . .	Composer . . . 142
4765 Weber, W. Ed., d Hoffmann . . . . .	Physicist
4794 Webster, lf . . . . .	Statesman . . . 144
2945 Weierstrass, pt Voigt- länder . . . . .	Mathematician
8301 Weingartner, lf . . . . .	Musician
8395 Weismann, lf . . . . .	Zoologist
4654 Wellington, pt Orsay	General . . . 145
4716 Werestchagin, lf . . . . .	Painter
4423 Werner, A. v., d Philipp . . . . .	Painter
8129 Wesley, pt Hone . . . . .	Preacher . . . 137
8716 Westinghouse, lf . . . . .	Inventor . . . 139
5102 Wheatstone, d Law- rence . . . . .	Physicist
4740 Whitman, lf . . . . .	Poet . . . . . 134
8074 Whittier, pt Smith . . . . .	Poet . . . . . 134
4762 Wieland, pt May . . . . .	Poet
8050 —, pt Jagemann . . . . .	Poet
4683 Wilamowitz - Möllen- dorff, pt Nelson- Dirichlet . . . . .	Philologist
8211 — —, lf . . . . .	
2998 Wilbrandt, pt Lenbach	Writer
8167 Wilberforce pt Law- rence . . . . .	
8283 Wilde, Oscar, ano- nym, d . . . . .	Philanthropist Writer . . . . . 133

	Page
8150 Wildenbruch, E. v., d Wellmann . . . . .	Poet
1053 William I., pt Richter	German Emperor
8071 —, lf . . . . .	
4346 William II, lf . . . . .	German Emperor
2711 —, lf . . . . .	
4751 —, lf . . . . .	
8044 Windscheid, lf . . . . .	Jurist
8674 Wissmann, H., lf . . . . .	Explorer
4764 Wöhler, d Hoffmann . . . . .	Chemist
4700 Wolf, Hugo, d Philipp	Composer . . . 143
8192 Wölflin, lf . . . . .	Historian
8316 Wright, Wilbur, d Mielziner . . . . .	Inventor . . . 139
4347 Wüllner, lf . . . . .	Singer
2984 Wundt, pt Arnd- Raschid . . . . .	Physiologist
4685 —, lf . . . . .	
4648 Yorck v. Wartenburg, pt Gebauer . . . . .	General Writer
8377 Zahn, Ernst, lf . . . . .	
2926 Zeller, pt Scheuren- burg . . . . .	Philosopher
8051 Zelter, pt Begas . . . . .	Composer
8160 Zeppelin, lf . . . . .	Inventor
8021 Zieten, pt Cunning- ham . . . . .	General
4199 Zola, lf . . . . .	Writer . . . . . 135
8295 Zwingli, pt Asper . . . . .	Reformer . . . 137

# INDEX

	Page		Page
<b>Achenbach, Oswald (1827—1905)</b>		<b>Claudius (1854)</b>	
Castle of the Angels,		Sunday morning . . . . .	10
Rome . . . . .	9	The day is done . . . . .	10
<b>Adametz (1884)</b>		The old homestead . . . . .	11
The finish . . . . .	3	The parson's garden . . . . .	11
The return . . . . .	3	Midsummer . . . . .	12
<b>Albrecht (1862—1926)</b>		Harvest time . . . . .	13
Field flowers . . . . .	26	The old library . . . . .	32
<b>Alma-Tadema, Lawrence</b>		<b>Clauff (1882)</b>	
(1836—1912)		Beethoven's birthplace . . . . .	35
Reading from Homer . . . . .	47	<b>Collier (1850)</b>	
Roman bath . . . . .	49	So wide is my love (Sic	
Spring-festival . . . . .	49	te amo) . . . . .	69
Silver favorites . . . . .	49	<b>Corinth (1858—1926)</b>	
Vain courtship . . . . .	51	Flowers and fruit . . . . .	25
In my studio . . . . .	51	<b>Corot (1796—1875)</b>	
<b>Bantzer (1857)</b>		Dance of the nymphs . . . . .	6
Sunday morning . . . . .	34	Spring . . . . .	7
<b>v. Bartels (1856—1906)</b>		The pond of Ville	
Moonlight on the Zuider-		d'Avray . . . . .	100
see . . . . .	5	<b>Courbet (1819—1877)</b>	
<b>Blechen (1798—1840)</b>		Picnic . . . . .	102
Ascent to Terni . . . . .	108	<b>Crofts (1847—1911)</b>	
<b>Blinks (1860—1912)</b>		Napoleon and the old	
Duck shooting . . . . .	18	guard . . . . .	55
In the marshes . . . . .	22	<b>Cross (1856—1910)</b>	
Last fence . . . . .	22	Sailing-vessels . . . . .	106
On the bank . . . . .	23	<b>Daubigny (1817—1878)</b>	
Evens on the field . . . . .	23	Landscape . . . . .	100
<b>Botticelli (1446—1510)</b>		<b>Daumier (1810—1879)</b>	
Magnificent . . . . .	74	The riders . . . . .	104
Virgin Mary with child		<b>Degas (1834—1917)</b>	
and singing angels . . . . .	74	The dancer . . . . .	103
Virgin Mary with child		<b>Delarocbe (1797—1856)</b>	
and angels . . . . .	75	Napoleon I. . . . .	54
<b>Boucher (1703—1770)</b>		<b>Derain (1880)</b>	
Marquise de Pompadour . . . . .	92	Landscape . . . . .	107
<b>Bô Yin Râ (1876)</b>		<b>Dicksee, Frank (1853—1895)</b>	
Temple of Eternity . . . . .	120	La belle dame sans merci . . . . .	57
<b>Brangwyn (1867)</b>		The shadowed face . . . . .	69
Venice . . . . .	1	<b>Dicksee, M. J. (1859—1903)</b>	
The Buccaners . . . . .	1	The child Händel . . . . .	37
Bridge in Spain . . . . .	24	<b>Dietrich (1833—1908)</b>	
<b>Bürgel (1853—1906)</b>		Peace, be still . . . . .	58
Twilight . . . . .	14	The good shepherd . . . . .	63
<b>Buri (1868—1915)</b>		Lord have mercy upon us . . . . .	64
Old folks . . . . .	34	<b>Doesburg (1883)</b>	
<b>Burnand (1850—1924)</b>		Plan of a house for an	
Christ at Bethany . . . . .	62	artist . . . . .	118
The Lord's prayer . . . . .	62	<b>Drouais (1727—1775)</b>	
<b>Burne-Jones (1833—1898)</b>		Princess Condé . . . . .	92
Love among the ruins . . . . .	46	<b>Durer (1471—1528)</b>	
<b>Carrà (1881)</b>		Portrait of a woman . . . . .	84
Pine on the sea-shore . . . . .	116	Hieronymus Holzschuher . . . . .	84
<b>Cézanne (1839—1906)</b>		Emperor Maximilian I. . . . .	84
Still-life . . . . .	25	<b>Duxa (1867)</b>	
Landscape . . . . .	106	The birthday . . . . .	28
<b>Chirico (1887)</b>		Quiet evening . . . . .	28
Still-life . . . . .	117	Sunday afternoon . . . . .	29
		<b>van Dyck (1599—1641)</b>	
		Man with sunflower . . . . .	85
		Portrait of himself . . . . .	85
		Maria Louise de Tassis . . . . .	85
		William II. of Nassau . . . . .	85
		<b>Ehrhardt (1872)</b>	
		Old Weimar . . . . .	30
		Roses . . . . .	30
		<b>Eichhorn (1873)</b>	
		Old Vienna . . . . .	32
		<b>Eichstaedt (1856—1926)</b>	
		Emmaus . . . . .	61
		<b>van Eyck (1366—1426)</b>	
		Angels singing . . . . .	73
		Angels playing . . . . .	73
		Man with pink . . . . .	87
		<b>Feininger (1871)</b>	
		Church . . . . .	116
		<b>Frey (1870)</b>	
		Quiet sea . . . . .	15
		<b>Gainsborough (1727—1788)</b>	
		The blue boy . . . . .	91
		Mrs. Siddons . . . . .	93
		Miss Linley . . . . .	94
		<b>Gauguin (1848—1903)</b>	
		Contes barbares . . . . .	110
		<b>Gebhardt (1838—1925)</b>	
		The Lord's supper . . . . .	60
		<b>Giorgione (1478—1511)</b>	
		The Concert . . . . .	87
		Portrait of a man . . . . .	87
		<b>Godward (1862—1920)</b>	
		Bath of Venus . . . . .	48
		<b>van Gogh (1853—1890)</b>	
		The bridge . . . . .	24
		The Zuave Milliet . . . . .	104
		<b>Goebler (1874)</b>	
		The end of summer . . . . .	14
		<b>Grafi, Herm. (1875)</b>	
		Rondo . . . . .	39
		The blue room . . . . .	39
		<b>Greuze (1725—1805)</b>	
		Milk-maid . . . . .	96
		The broken pitcher . . . . .	96
		The eaves-dropper . . . . .	96
		Head of a girl . . . . .	96
		<b>Hals (1580—1666)</b>	
		The jolly toper . . . . .	82
		Willem van Heythuysen . . . . .	82
		The laughing cavalier . . . . .	82
		Nurse with child . . . . .	82
		<b>Havers (1880—1916)</b>	
		Round dance . . . . .	52
		<b>Hawksley (1880)</b>	
		Moon-rise . . . . .	52
		<b>Heller (1869—1910)</b>	
		Tulips . . . . .	27
		<b>Hemy (1841—1917)</b>	
		Life . . . . .	2
		Haul aft! . . . . .	2

	Page		Page		Page
<b>Hobbema</b> (1638—1709)		<b>Leistikow</b> (1865—1908)		<b>Oppler</b> (1867)	
Water-mill . . . . .	7	Lake in the woods . . . . .	8	Moonlight-sonata . . . . .	36
<b>Hodler</b> (1853—1918)		Lake in the Grunewald . . . . .	8	<b>Orchardson</b> (1855)	
Spring . . . . .	110	In the Grunewald . . . . .	9	Napoleon on the „Bel- lerophon" . . . . .	54
<b>Hoimann</b> (1824—1911)		<b>Leonardo da Vinci</b>		<b>Parker</b> (1860)	
Christ at Gethsemane . . . . .	59	(1452—1519)		The door of the fold . . . . .	63
<b>Holbein</b> (1497—1543)		The Lord's supper . . . . .	61	<b>Parsons</b> (1847—1920)	
Georg Gisze . . . . .	84	Mona Lisa . . . . .	83	Hail Mary . . . . .	69
<b>Holiday</b> (1837—1927)		<b>Liebermann</b> (1847)		<b>Peacock</b> (1865)	
Dante and Beatrice . . . . .	47	Orphan girls in Amster- dam . . . . .	109	Out of the everywhere . . . . .	41
<b>de Hooch</b> (1629—1677)		<b>Linderum</b> (1851)		<b>Pellar</b> (1886)	
Dutch interior . . . . .	89	Ave Maria . . . . .	39	Thoughts of love . . . . .	42
The mother . . . . .	89	<b>Lippi, Filippo</b> (1406—1469)		Sun-kiss . . . . .	42
<b>Hoppner</b> (1758—1810)		Madonna adoring the child . . . . .	73	Summer-day . . . . .	42
Olivia . . . . .	94	<b>Macke</b> (1887—1914)		Park-festival . . . . .	42
<b>Ittenbach</b> (1813—1879)		Under the trees . . . . .	113	The green canopy . . . . .	43
Virgin Mary . . . . .	65	<b>Maes</b> (1632—1693)		Park of Versailles . . . . .	43
Christ-child . . . . .	65	Old woman peeling apples . . . . .	53	Garden of love . . . . .	43
The holy family . . . . .	71	<b>Manet</b> (1832—1883)		The cavaliers . . . . .	43
Mater Christi . . . . .	71	Olympia . . . . .	53	<b>Piannschmidt</b> (1819—1887)	
St. Anne with the child Mary . . . . .	71	In the hot house . . . . .	102	Suffer little children to come unto me . . . . .	63
The holy family in Egypt St. Joseph with the boy Jesus . . . . .	71	<b>Marc</b> (1880—1916)		<b>Picasso</b> (1881)	
<b>Kallmorgen</b> (1856—1924)		Horses . . . . .	112	Still-life with red wall- paper . . . . .	114
Sunset at Hamburg . . . . .	5	The tower of blue horses . . . . .	119	<b>Plueckebaum, Meta</b> (1883)	
<b>Kandinsky</b> (1866)		<b>Marées</b> (1837—1887)		Old fashioned flower- piece . . . . .	27
Fanciful dream . . . . .	117	Villa Borghese . . . . .	108	<b>Poynter</b> (1836—1919)	
<b>Keller</b> (1842—1922)		<b>Matisse</b> (1869)		A visit to Aesculapius . . . . .	50
The sanctuary by the lake . . . . .	15	Gold-fishes . . . . .	115	<b>Raeburn</b> (1756—1823)	
<b>Kemp-Welch</b> (1865)		<b>v. d. Meer van Delit</b>		William Ferguson of Kilrie . . . . .	93
The riders . . . . .	21	Gentleman and lady drin- king wine . . . . .	86	<b>Raffaël</b> (1483—1520)	
The morning of the year . . . . .	19	Girl reading a letter . . . . .	88	Sistine Madonna . . . . .	66
<b>Klee</b> (1879)		Mistress and servant . . . . .	88	Sistine Madonna (detail) . . . . .	67
The garden . . . . .	115	The pearl-necklace . . . . .	89	Madonna del Granduca . . . . .	70
<b>Klemm</b> (1883)		<b>Meyer-Eberhardt</b> (1895)		Madonna della Sedia . . . . .	75
Christiania-turn . . . . .	17	Roe-kids . . . . .	16	<b>Rembrandt</b> (1606—1669)	
Cross-jumping . . . . .	17	<b>Mondrian</b> (1872)		The disciples of Emmaus . . . . .	60
<b>Knaus</b> (1829—1910)		Composition in red, blue and yellow . . . . .	118	The night-watch . . . . .	76
Charity . . . . .	41	<b>Mönsted</b> (1867)		The watch . . . . .	77
<b>Kowalski-Wierusz</b>		In the Spreewald . . . . .	35	Portrait of Nic. Bruyningh The syndics . . . . .	77
(1849—1915)		<b>Morgner</b> (1891—1917)		Portrait of himself . . . . .	78
The lone wolf . . . . .	16	Christ entering into Jeru- salem . . . . .	111	The man with the golden helmet . . . . .	78
<b>Krings</b> (1878—1924)		<b>Mueller, Carl</b> (1818—1893)		A lesson in anatomy . . . . .	78
Young mother . . . . .	31	Christ and the disciples . . . . .	63	Portrait of a man . . . . .	79
The smoker . . . . .	31	The Immaculate Concep- tion . . . . .	69	Portrait of a woman . . . . .	79
<b>Kuhnert</b> (1865—1926)		St. Anne with the child Mary . . . . .	70	Abraham and the angels . . . . .	79
Scenting the storm . . . . .	18	St. Joseph with the boy Jesus . . . . .	70	<b>Renoir</b> (1841—1919)	
Lions roaring . . . . .	19	<b>Mueller, Franz</b> (1843)		The children in Varge- mont . . . . .	103
<b>Lancret</b> (1690—1743)		Virgin Mary . . . . .	68	<b>Reynolds</b> (1723—1792)	
The dancer Camargo . . . . .	97	<b>Mueller-Brieghel</b> (1860—1912)		Lavinia Bingham . . . . .	90
Music-lesson . . . . .	97	Summer-evening . . . . .	42	Anne Bingham . . . . .	90
Innocence . . . . .	97	<b>Mueller-Kurzweilly</b>		Master Spencer . . . . .	90
The dance at the Pegasus fountain . . . . .	98	(1855—1914)		Lady Crewe . . . . .	90
<b>Lawrence</b> (1769—1830)		Park of Sanssouci . . . . .	13	Master Crewe . . . . .	91
Miss Farren . . . . .	91	<b>Munch</b> (1863)		<b>Rivière, Briton</b> (1840—1920)	
Master Lambton . . . . .	91	The farmyard . . . . .	111	The magician's door-way . . . . .	57
<b>Lebrun, Vigée</b> (1755—1842)		<b>Murillo</b> (1618—1682)		<b>Rodschenko</b> (1885)	
Empress Elizabeth of Russia . . . . .	94	St. Anthony of Padua . . . . .	67	Composition with a black circle . . . . .	118
Portrait of herself and her daughter . . . . .	95	Ascension of the Virgin Mary . . . . .	68	<b>Roegels</b> (1870—1917)	
Mme. Molé-Raymond . . . . .	95	The Immaculate Concep- tion . . . . .	68	The kiss . . . . .	44
<b>Léger</b> (1881)		Madonna with child . . . . .	70	The declaration . . . . .	44
Two ladies in front of a mirror . . . . .	114	<b>Nattier</b> (1685—1766)		Wooing . . . . .	44
<b>Leibl</b> (1846—1900)		Madame de Laporte . . . . .	92	Scherzo . . . . .	45
The spinner . . . . .	109	Elizabeth de Bologne . . . . .	92	Promenade . . . . .	45
<b>Leighton</b> (1830—1896)		<b>Nolde</b> (1867)		Outlook . . . . .	45
Captive Andromache . . . . .	50	The enthusiasts . . . . .	112	<b>Roloff</b> (1879)	
Bath of Psyche . . . . .	48			Horses in thunderstorm . . . . .	20
				Burning prairie . . . . .	21
				<b>Romney</b> (1734—1802)	
				Mrs. Johnson . . . . .	94



	Page		Page		Page
<b>Rosenthal</b> (1848)		<b>Signac</b> (1863)		<b>Vloors</b> (1872)	
Morning prayer at J. S.		Port of La Rochelle . . .	105	Soap bubbles . . . . .	35
Bach's . . . . .	36	<b>Sinkel</b> (1835—1908)		<b>v. Volkmann</b> (1860—1927)	
<b>Rossetti</b> (1828—1882)		Christ-Child with . . .	IV.	Landscape . . . . .	12
Dante's dream . . . . .	46	Commandment . . . . .	65	<b>de Vos</b> (1585—1651)	
<b>Rousseau</b> (1845—1910)		Sancta Maria Virgo . . .	65	The painter's daughters .	89
The toll-gate . . . . .	107	<b>Sisley</b> (1839—1899)		<b>Waterlow</b> (1851)	
<b>Rubens</b> (1577—1640)		Seine landscape . . . . .	101	At the nursery . . . . .	40
Fruit-garland . . . . .	80	<b>Stattler</b> (1867)		<b>Watteau</b> (1684—1721)	
Diana's chase . . . . .	80	Blue bells and lark-spur	26	Departure for Cythera .	98
<b>Ruisdael</b> (1628—1682)		<b>Taylor, L. Campbell</b> (1874)		<b>Wending</b> (1864)	
Wind-mill . . . . .	6	Japanese room . . . . .	30	At the book-case . . . . .	32
<b>Ryland</b> (1859—1925)		Game of chess . . . . .	31	Barberina . . . . .	33
Ruth . . . . .	64	<b>Ter Borch</b> (1617—1681)		Margravine of Bayreuth .	33
Rachel . . . . .	64	Young lady reading . . .	86	Tea-house . . . . .	33
<b>Sadler</b> (1854—1923)		Concert . . . . .	88	The new ear-rings . . . .	33
Chorus . . . . .	38	Fatherly admonition . . .	88	Matinée . . . . .	39
<b>Schels</b> (1890)		<b>Thielmann</b> (1668—1925)		<b>Werestchagin</b> (1842—1904)	
Side jumping . . . . .	17	After the christening . . .	29	Before Moscow . . . . .	55
<b>Schmid</b> (1854)		<b>Thoma</b> (1839—1924)		In the Kreml . . . . .	55
Beethoven . . . . .	35	Roundelay . . . . .	40	<b>Whistler</b> (1834—1903)	
<b>Schmidt-Rottluff</b> (1884)		Solitude . . . . .	41	„The piano picture“ . . .	37
Bathers . . . . .	113	<b>Titian</b> (1477—1576)		Miss Alexander . . . . .	93
<b>Schönleber</b> (1851—1917)		Sacred and profane love	50	<b>Windelschmidt</b> (1884)	
Tidal wave . . . . .	4	La Bella . . . . .	83	„Thou fairest flower of	
Homeward bound . . . . .	4	Lavinia . . . . .	83	heaven“ . . . . .	72
Canal in Rotterdam . . . .	5	The tribute money . . . . .	83	Madonna with child . . .	72
<b>Schramm</b> (1865)		<b>Tragy</b> (1866)		<b>Woodward, Lee</b> (1868)	
The bibelot . . . . .	32	Girl and parrot . . . . .	48	Fairies' court . . . . .	56
Songs without words . . . .	38	<b>Troyon</b> (1810—1865)		<b>Wuennenberg</b> (1850)	
<b>Seurat</b> (1859—1891)		Rising thunderstorm . . .	101	Love's young dream . . . .	48
Pocuses . . . . .	105	<b>Unknown master</b>		<b>Zuegel</b> (1850)	
<b>Severini</b> (1883)		Countess Potocka . . . . .	93	Crossing the river . . . . .	20
Restless dancer . . . . .	117	<b>Velazquez</b> (1599—1660)		<b>Greek Classic Monu-</b>	
<b>Siemiradzki</b> (1943—1902)		Venus . . . . .	53	ments . . . . .	121—130
Phryne at Eleusis . . . . .	51	The spinners . . . . .	81	„Corpus Imaginum“ (a col-	
		The surrender of Breda	81	lection of over 700 authen-	
				tic portraits) . . . . .	131—145



GETTY CENTER LIBRARY



