

## **Historic, Archive Document**

Do not assume content reflects current scientific knowledge, policies, or practices.





JOHNSON WATER GARDIENS  
HYNES, CALIFORNIA

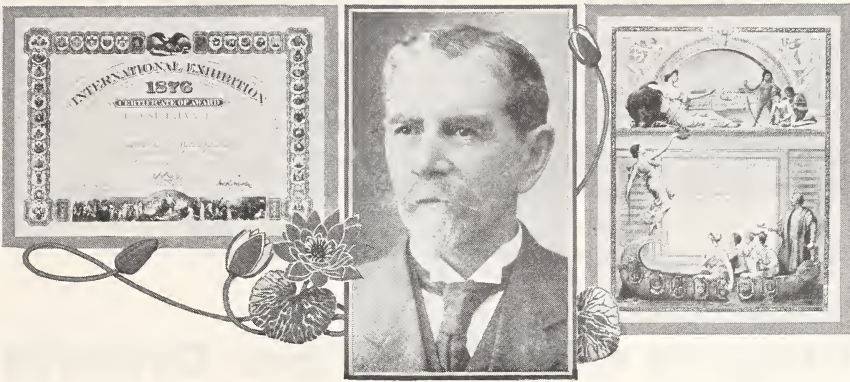


# Blue Triumph



*YOU will enjoy this giant flowered, deep blue lily. During the long summer months the powerfully fragrant blossoms are freely and continuously borne and will give you much pleasure, both in the pool and as a cut flower in the house. It was raised in our nursery and we can recommend it through ten years of satisfaction.*

**Each \$2.50**



## 1876-1930



**L**N 1876 the first Water Lily nursery in America was founded by E. D. Sturtevant at Bordentown, New Jersey. A lover of rare and uncommon plants, the exotic flavor and exquisite blossoms of the Water Lilies intrigued him, and to their development he devoted a long life of patient and fruitful effort. From collectors and botanic gardens all over the world he received new species of Nymphaeas, choice varieties or new hybrids to enrich his large collections.

To him our water gardens are indebted for much of their color and splendor. Many plants now inseparable from even the tiniest pool, were first introduced, or distributed by him, years before other nurseries were in the field. In 1876 he introduced and naturalized, for the first time on American shores, the stately Egyptian Lotus. All the Lotus in our gardens are descendants of this introduction. He also first catalogued the wild yellow lotus, the fragrant pond lily (*N. odorata*), *N. tuberosa* from the middle west and *N. mexicana* from Florida. Among outstanding introductions to American gardens were the parents of our present night bloomers, *N. dentata*, *N. rubra*, *N. devoniensis*, *N. Sturtevantii*; the parents of present day Tropical Lilies, *N. caerulea*, *N. capensis*, *N. Zanzibariensis*, *N. gracilis*, the parent of the Star Lilies, and many others. Among the smaller plants first sent out were the Water Poppy, Water Hawthorne, Shell Flower and the Floating Heart. Many awards were won by these novelties and by the splendid exhibitions of the giant *Victoria regia*, varieties of which he introduced and grew with notable success.

For years this nursery was the only American source of Water Lilies, and in 1881 the first aquatic catalog ever issued, 36 pages describing his introductions, was sent out, followed at frequent intervals until the present one.

Some thirty-five years ago the nursery was moved to Hollywood, and in this favored locality became a feature of the early city. In 1921, owing to the need of acreage for expansion, we moved to our present site at Hynes, fifteen miles south of Los Angeles. Here, on our new ten-acre addition, we have developed a completely equipped plant to grow and ship aquatics. Altogether, in Southern California we have fifteen acres of pools, from which our supply of Water Lilies is drawn to fill the thousands of orders yearly shipped to every state and province in the United States and Canada. We have one of the largest stocks of Water Lilies in this country, as well as the most complete.

Through our connections with collectors and growers throughout the world we have built up, during a period of over fifty years, by far the most complete collection of Water Lilies in existence, either in Europe or America. We now have, with few exceptions, all the Hardy Lilies introduced during the past half century. During the past twenty years we have introduced to our gardens from European sources such sterling plants as Comanche, Mrs. Richmond, Escarboucle, Conqueror, Somptuosa, Masaniello and many others. From our own pools have come the Star Lilies, Blue Triumph, *Gracilis rubra* and others awaiting introduction. As stocks increase we will offer the many novelties now growing in our pools.

## JOHNSON WATER GARDENS

**Harry Johnson, Proprietor**





California sunshine guarantees vigorous plants.  
Fifteen acres devoted exclusively to water lilies

## Things to Observe When Ordering

It is our desire to serve our customers with as little expense and trouble to them as possible. Thus we offer many **Collections carriage prepaid** and safe arrival guaranteed so that distance from us need not be taken into account. For those who prefer to choose directly from the catalog such varieties as appeal to them we make the following offer, as we do not prepay carriage except on our collections: **We will include with all such orders extra plants of good standard varieties offered in this catalog to an amount equal to the express or postage charges.** We furthermore pack very lightly and carefully and assure you that we stand behind the safe arrival of all plants shipped. We only ask you that any claims for damaged plants be sent immediately upon their receipt and if by express accompanied by a confirmatory note from the Express Agent. This is for our own protection.

## Shipping Costs

### HOW TO ESTIMATE EXACT POSTAGE

We ask only 10% of the value of your order to cover postage except on Tropical Lilies as listed on pages 18 to 23. Tropical Lilies being large, heavy, potted plants and needing careful packing a postage charge of 30 cents each is made regardless of the value of the plant.

**Hardy Lilies.** Add 10% of the value of your order to cover Parcel Post charges on all Hardy Lilies and Pool Plants.

**Tropical Lilies.** For each Tropical Lily ordered add 30 cents for Parcel Post.

**Collections** are all Post Paid.

**Extra Plants** to cover postage sent.

**Pacific Coast States.** Hardy Water Lilies may be planted any month in the year in the warmer regions of the Coast. Early planting means early blooms and successful pools.

**Southern States.** Owing to our favorable location we can ship very early to the warmer regions of the United States. This will add from 30 to 60 days to the blooming period of your garden. The earlier Hardy Lilies are planted the quicker they become established.

**Canadian Orders.** We ship many orders into Canada yearly and have never had an order fail to go through promptly. Canadian correspondents should write to the Destructive Insect and Pest Act Advisory Board, Department of Agriculture, Ottawa, for permission to import water plants. This is freely given, being a matter of form in this class of plants. Be sure and **send us the number of your permit** so that we may put it on your package for prompt inspection at the border.

**Florida Orders.** Our plants are grown in a clean district and are thoroughly free from all insect pests. We ship many orders into Florida each season and all have promptly passed the Horticultural Inspectors. We comply with all state regulations. We ship early to all Gulf States, thus giving you a much longer blooming period for your plants.

**Hardiness of Our Stock.** Our Hardy Water Lilies are perfectly hardy wherever water lilies can be grown. California sunshine makes our Tropical Lilies strong and vigorous. We have been shipping to all points from our California location for 33 years.

**Remittances.** Make all checks and money orders payable to Johnson Water Gardens, Hynes, California.

**Assistance** in any matter pertaining to water gardening will be gladly given.

**Guarantee.** All plants are guaranteed to be true to name and in good condition when shipped. Owing to conditions over which we have no control—weather and care—it is impossible for us to assume any responsibility for results after planting. Complaints, if any, can be considered only when tendered at time plants are received.

**Ordering early** will assure early shipments. Please use order blank.

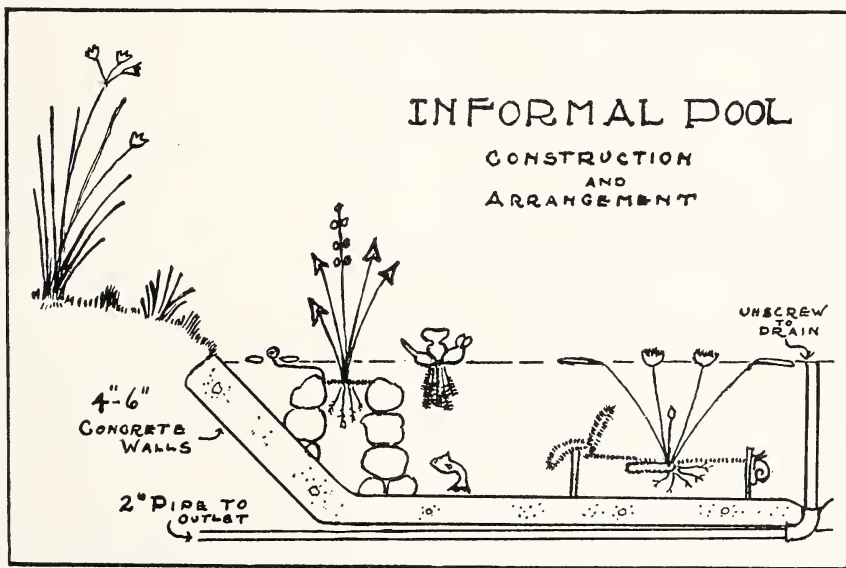


# Simple Ways to Build a Lily Pool

We are often asked if it is easy to build a lily pool and the answer is most assuredly yes! Hundreds of successful pools are built each year at slight expense by our garden friends. Most of them are small pools 6 to 20 feet across and 2 feet deep, some are of formal geometrical shape particularly appropriate near buildings while others are informally irregular in outline with bays and promontories. Many of them are built with a ledge around the margin to accommodate those plants appreciating shallow water such as Iris and Pickerel Plant.

A very inexpensive and practical pool may be made by excavating a bowl-like depression as shown in cross-section in the accompanying diagram. First trace out on the ground the size and shape of the pool you admire, making it as large as your space will allow. Dig out the soil to a depth of 2 feet 6 inches, grading the floor flat and sloping the walls at an abrupt 45-degree angle. Then tamp the sides and bottom until firm and smooth. For reinforcing, wire fencing serves very well by spreading it over the floor and pulling it up as the concrete is laid until it is in the middle of the wall. Make the walls and floor about 6 inches thick where heavy freezing is expected. In regions of mild winters where light freezing is expected a 4-inch wall is ample. As the concrete is laid it should be well tamped and smoothed out and, after setting for a few hours, a mixture of cement and water of the consistency of thin cream should be brushed on with a broom or whitewash brush. This will render it waterproof. Sprinkle several times daily for 3 or 4 days, allowing the concrete to cure slow.

Where a formal pool of rectangular shape is desired, excavate to a depth of 30 inches to the exact size wanted, then carefully trim the walls as these will act as the outside form. Allow a space of 6 to 8 inches and build the inner form. Steel reinforcing rods  $\frac{3}{8}$  inches in diameter should be laid in when the wall is about three-quarters full. This will prevent, to a great degree, the cracking of the walls. The floor may then be poured.



**Mixing and Laying Concrete.** A simple and satisfactory mixture for pools is 1 shovelful cement, 2 of sand, 3 of half-inch crushed rock or pea gravel. Turn over dry two or three times and then add enough water to make a pasty mixture that will just not run. In applying concrete tamp well. Be sure and keep the concrete moist after it has set by sprinkling down or covering with burlap for several days, for the slower it cures the harder it becomes.

**Drainage.** Many pools are built without drainage but as it is well to clean them each spring it is less troublesome to provide some method of emptying. If the pool is small it can be bailed out. Drainage may be provided by a 2-inch pipe in the bottom led to a low place or if the soil is sandy, to a hole filled with rocks and covered over. If there is a place lower than the pool it may be siphoned out with a hose. To start a siphon, fill the hose full of water, keeping both ends plugged, putting one end in the pool and the other at the lowest place, releasing both at the same instant. How the overflow and drain pipe are made is shown on the diagram.



# The Culture of Water Lilies

Water Lilies are so easily and successfully grown even by those who have had no previous experience that following these simple directions one may be assured of a satisfying display of their brilliant flowers. In fact, water lilies are easier to grow than roses or dahlias and are far the least trouble of any feature in the garden. The actual care of the pool may be summarized in a few lines. **Keep the water level fairly constant and the pool clean.** It is not necessary to drain the pool at all during the growing season, simply supply the evaporation. Allow the hose to run in and overflow the pool occasionally if the water becomes green or murky. This may occur immediately after planting from the manure in the soil. Overflowing is the sure remedy. After the water becomes clear it will remain so. Enthusiasts will find many other things to do, some of which will benefit the plants, but none of which may not be safely dispensed with. Most of us produce good roses or dahlias with ordinary care, yet the fancier growing show flowers may constantly be engaged in tending his charge, and so it is in water gardening.

## Establishing the Water Garden

The most important things in establishing a successful pool are to have the depth of water right and an abundance of good garden loam in which the plants are to grow. **We build our pools 2 feet deep, which allows for 1 foot of soil and 1 foot of water over the plants.** These give the best average results, though the depths may be greater or less and still the plants thrive.

**Soil and Fertilizer.** Most any garden loam will give good results, they particularly rejoicing in a strong loam such as roses enjoy. Do not use leafmold or swamp muck. The best fertilizers are the mildly stimulating kinds among which cow manure—well rotted if possible—and bonemeal rank high. Sheep manure or commercial fertilizers of any standard brand are particularly recommended for the small pool. Their use will insure a thrifty, luxuriant growth. All fertilizers should be well mixed with the soil before planting—cow manure at the rate of 1 part in 5, commercial fertilizers 1 pound to each 18-inch box.

**Boxes versus Mud Bottoms.** There are two commonly used methods of planting—in boxes or by spreading the soil over the concrete of the bottom to the required depth. Both have their good points according to conditions. For the large pool or where varieties must be kept, separate boxes are recommended. In small pools where the space is restricted, plants often make better growth on a mud bottom as it allows more root room. Boxes should be 1 to 2 feet square and 1 foot deep. In large pools they should be 3 to 4 feet square. The rule is to give as large a box as possible for the number and size of the blooms are in direct ratio to the amount of root room.

**Distance Apart to Plant.** A pool 4 by 6 feet will comfortably accommodate 3 or 4 lilies as well as Water Poppies, Water Hawthorne, Arrowhead, Water Hyacinth, Water Iris or equivalent plants. A pool 10 feet in diameter will accommodate 6 to 10 lilies, depending upon their vigor, and also a number of Water Poppies, Iris and other such plants. As a general rule, it is well to allow from 3 to 5 feet between the plants. In very large pools a more natural effect may be gained by planting a number of roots in a group and separating the groups by a little open water.

**Construction of Boxes.** For years we have used ordinary rough pine boards 1 inch thick and 12 inches wide in building boxes. Pine wood will last for many seasons under water and is entirely satisfactory. No bottom need be used, for when the sides are placed on the concrete floor it is not needed; however, a strip should be nailed across on the inside so that when the soil is put in it will keep the sides from floating away. The corners of the boxes should be reinforced by a 2 by 3-inch cleat nailed on the inside. Permanent boxes may be built of brick or concrete, but movable boxes are to be preferred. Tubs make good containers for the moderate growing kinds. It should be remembered that the roots of water lilies extend laterally rather than penetrate deeply, and thus kegs and other deep containers are not particularly satisfactory.

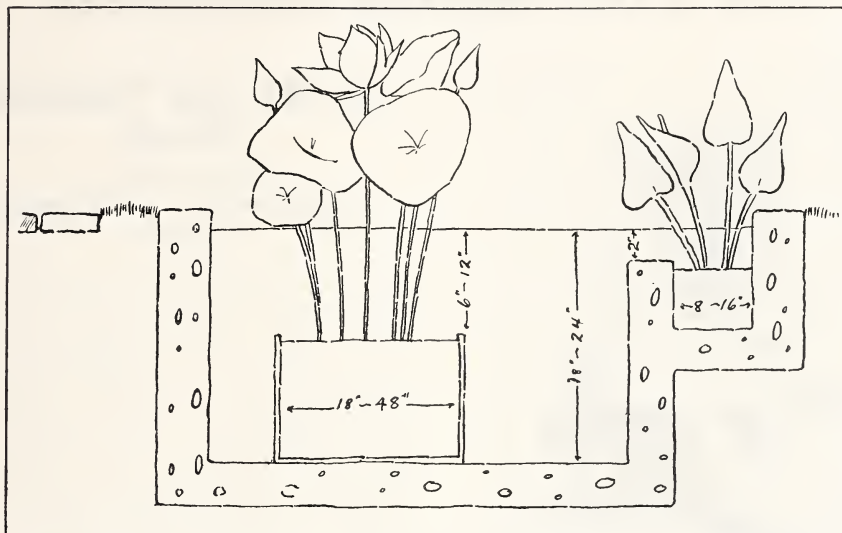
**Planting.** When the lilies are received care should be taken to **prevent their becoming dry before planting.** They may be covered with wet burlap. After the boxes are prepared a small hole may be scooped out and the plant put in place, **horizontally**, and not upright, with the growing end just flush with the surface.

## A Practical Metal Tank

This very successful pool was planned by Mrs. C. W. Fawcett of Kerrville, Texas. It consists of a galvanized iron tank 18 inches deep and 6 feet in diameter. Such a tank is quickly made at any tin shop. The ease with which it may be moved will appeal to those who are not permanently located. The lilies are planted in boxes and are growing and flowering freely. Blocks of concrete set in the lawn form a very pretty setting for the pool.







Showing ledge for small water plants, Water Iris and all plants requiring shallow water. It also shows in cross section how Lotus and Lilies should be planted with proper water depths.

Tropical water lilies are shipped as 4-inch pot plants, and these should be set upright to the same depth as before. It is well to fill the pool with water a day or so before planting to allow it to become warmed by the sun and then to plant directly in the water. **Do not allow the leaves to wither.**

**Sand to Cover Boxes.** An inch layer of sand or gravel spread over the boxes after planting will help to keep the water clear. This is particularly true where a fine clay soil is used or where goldfish are kept.

**When to Plant.** Planting of the Hardy Lilies may be begun from February to May, depending upon the location. Our shipping season opens in February for the Pacific Coast and Florida; March to May for the Southern and Northern States. Tropical lilies are planted somewhat later, generally in May and June. For details as to shipping dates see under Tropical Lilies. Hardy Lilies may be planted almost the year around in mild regions.

**Spring Cleaning.** In the early spring before growth commences the pool should be cleaned out and all sediment removed. At this time any necessary repairs should be made and all plants got in shape for the early display. Hardy Lilies should be dug up with a small ball of earth, the boxes emptied and refilled with fresh soil and fertilizer. The old soil may be used again if given a heavy dressing of commercial fertilizer. Replant the lilies, tramping the soil down well. Boxes for the Tropical Lilies and all other water plants should also be prepared. If this work is well done the pool will require very little attention during the summer.

**Winter Care of the Pool.** Hardy water lilies grow wild in northern regions and need no protection other than from direct freezing of the roots. Where the water is deep enough not to freeze solidly they will come through unharmed. Artificial pools are perhaps best drained to prevent damage to walls from ice. Fill the pool with straw or litter and cover with boards. If the covering is secure the boxes may be left in or they may be removed to a cold cellar or buried in a trench. See that they are kept **moist** and protected from mice. Do not allow them to become dry. Tropical water lilies are hardy only where oranges may be grown. Read under Tropical water lilies.

**Fall Care.** In the autumn the Hardy Lilies prepare for winter by losing all leaves, the plants becoming dormant until the early days of spring. All old leaves may safely be removed as a preparation for winter.

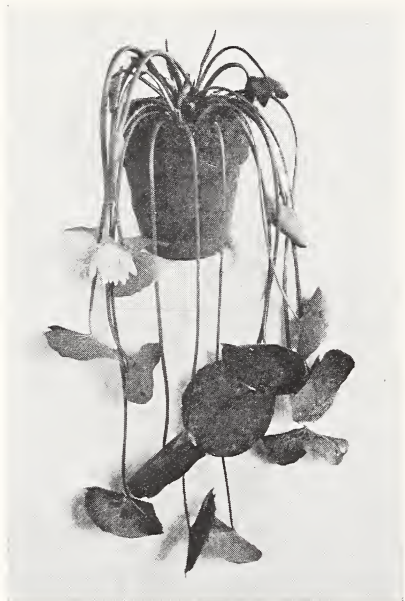
**Insect Enemies.** Plant lice or aphid is the only common pest of water plants. They are easily controlled by washing off with a strong spray of water when the fish will eat them. They may be killed with nicotine spray. We use the following home-made spray: 1 cubic inch laundry soap dissolved in a quart of hot water; add one-third pint kerosene, beat with egg beater to cream and add 5 gallons cold water. Use with garden spray.

**Green Scum.** The green scum sometimes found in pools will disappear when the leaves shade the surface. Allowing the pool to overflow will keep it in check.

**Mosquitoes and goldfish.** There will be no annoyance from mosquitoes where a few goldfish are kept in the pool. Allow about 12 fish to a 6-foot pool. These will take care of any mosquito wigglers hatching in the water and aid in keeping the water sweet and clear. This is one rule that works every time.



## For Early Spring Shipments



The Leaf Propagating Lilies flower when small. They can be shipped early in the season.



Dear Sir: I received your shipment of water lilies last spring in wonderful condition, also extra plants for which I thank you. The lilies grew fine and bloomed continuously all summer and are still at it. The Marliac Yellow is a wonderful lily and at one time had 18 buds and flowers and now (September 17th) has 5 blooms and 7 buds. The Blue Star and August Koch have also proved very satisfactory and both are still in bloom. I feel I have had wonderful success, principally through the strong plants you sent me. They grew so vigorously that at times the pool was one mass of leaves and flowers.

EDWIN H. ROBERTS,  
West Springfield, Mass.

### Hardy and Vigorous Roots Plant our Sunny Southern California Stock

In California growing conditions are ideal for Water Lilies and during our nine long summer months the plants make a strong and healthy growth. During January and February they become entirely dormant, hardening off into fine strong roots packed with stored energy and ready to burst into full growth and flower with the coming of spring. Our plants are all raised in our own concrete pools and because conditions are entirely under our control do not make the spongy, sappy and unripened growth of plants raised in wild swamps. You will find our roots heavy and solid.

Before shipping our plants are all cured so that recovery from transplanting is rapid. They are shipped with perfect safety anywhere from Mexico to Canada and upon unpacking will be found as fresh as the day they left our nursery.

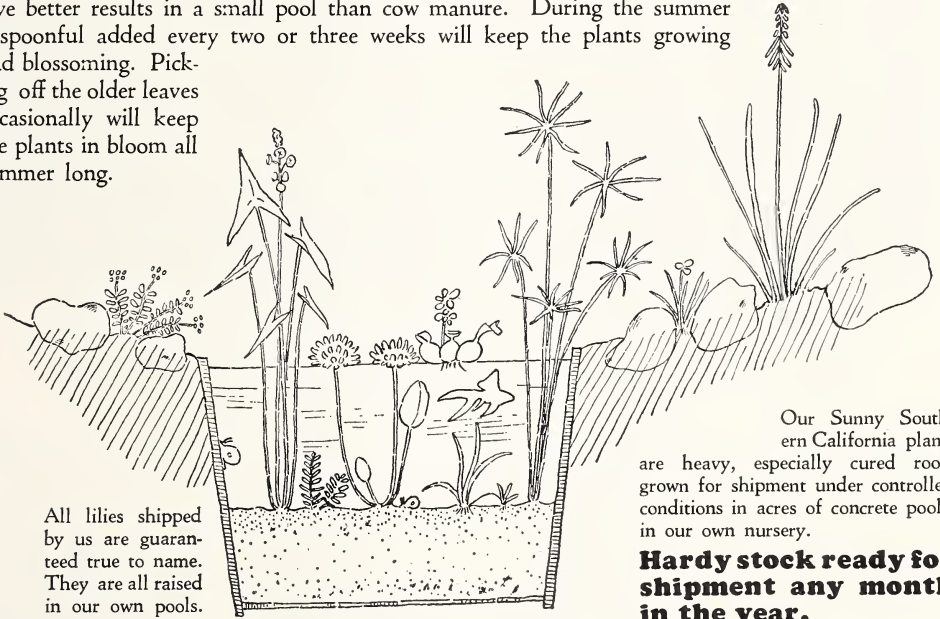


Dormant Roots of Gloriosa and Comanche  
Ready for Shipment

# Start a Tub Garden This Year and Enjoy a Miniature Pool

**H**APPILY water lilies will thrive in the confines of a tub or barrel in any nook or sunny corner of the garden, growing so easily and beautifully that everyone should enjoy them. You do not really need much room, a space three or four feet square making a very pleasing feature. One can experience the joys of this form of gardening growing some bright water lily and several varieties of other water and bog plants in and about the tub.

Choose a sunny spot and sink your tub . . . a common wash-tub makes a splendid container . . . or half barrel in the ground. Two or three tubs are often grouped together, filling the space between with perennials or perhaps arranging a rockery around them. The tub should be filled with 5 or 6 inches of garden loam to which a handful or so of commercial fertilizer such as bloodmeal or Ford fertilizer has been added and well mixed. The commercial fertilizer will give better results in a small pool than cow manure. During the summer a spoonful added every two or three weeks will keep the plants growing and blossoming. Picking off the older leaves occasionally will keep the plants in bloom all summer long.



All lilies shipped by us are guaranteed true to name. They are all raised in our own pools.

Our Sunny Southern California plants are heavy, especially cured roots grown for shipment under controlled conditions in acres of concrete pools, in our own nursery.

**Hardy stock ready for shipment any month in the year.**

## \$3.00 COMPLETE TUB GARDEN

### *Collection No. 1*

- 1 Water Lily  
Your choice of Marliac White, Aurora or the charming Yellow Pygmy.
- 4 Water Plants  
Some floating. Others to be planted with lily.
- 4 Marginal Plants  
Flowering perennials and grasses for the background. All plants different and our selection.
- 1 pair Water Snails  
These act as scavengers.

POSTPAID TO YOUR ADDRESS \$3.00

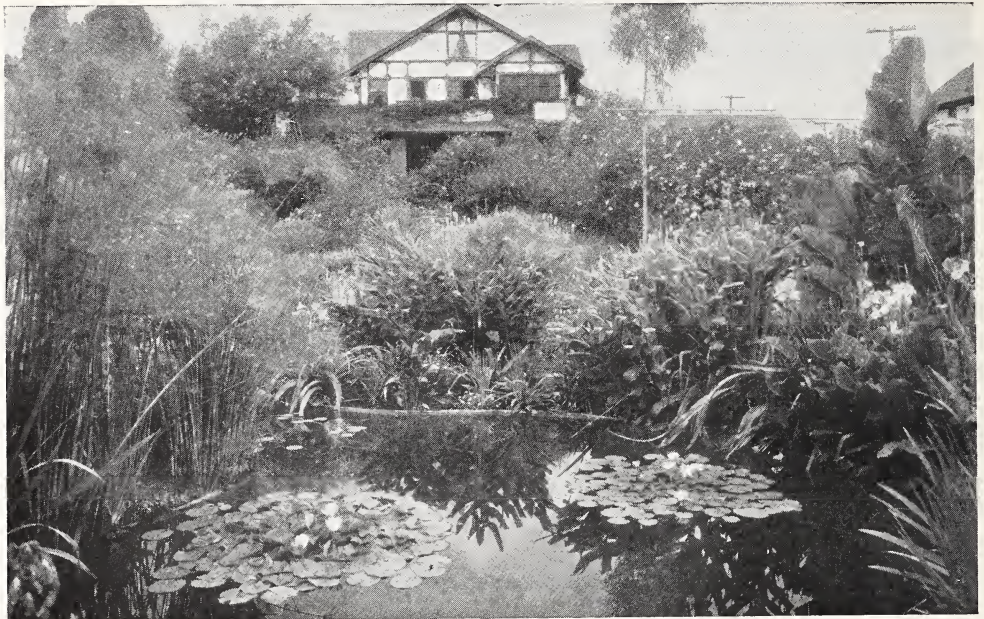
## \$5.00 TUB GARDEN

### *Collection No. 2*

- 1 Water Lily  
Your choice of Comanche, Conqueror (red) or Paul Hariot.
- 6 Water Plants  
A fine selection of the best kinds.
- 6 Marginal Plants  
Grasses and flowering perennials, all different.
- 1 pair Japanese Trapdoor Snails

POSTPAID TO YOUR ADDRESS \$5.00





An attractive setting for the pool enhances its beauty a hundred fold. This pleasing grouping of Hardy Lilies amid a tropical riot of marginal plants.

## New Varieties of Water Lilies

To many the lure of growing the rare and charming new introductions brought out yearly makes gardening the fascinating pursuit it is. We have listed here a number of the newer varieties that we can recommend as being everything the fancier could wish. As we have grown them for some years while accumulating stocks there has been ample opportunity to note the approval of the many who have seen them.

**MARY PATRICIA.** A new lily raised at our nursery. It is the daintiest blossom imaginable of full, deep peach blossom pink and as royally generous in flower as its prototype, *Gloriosa*, which it greatly resembles in habit. We know this will find your instant approval both for its daintiness and the bountiful supply of charming blossoms. \$5.00.

**AMETHYST.** A hybrid of our own raising and of leaf propagating parentage, offered the first time this season. The very large amethyst blue flowers are of distinct form and sharply set off in their bed of pink sepals. It comes into bloom when very small, making it a fine plant for the tub garden. A most interesting feature is the flowers and plantlets so freely produced on the old leaves with which no other variety can compare in this respect. You will be very much pleased with this splendid creation and as it so freely produces young plants we are enabled to offer it at \$3.00.

**GONNERE.** We are at last able to offer this finest of white lilies in sufficient quantities, we hope, to supply the demand. Think of an enormous, dazzling globe of snowy whiteness nestling among apple green pads and swaying to the ripples. There are only three really double lilies and this so far surpasses others in dazzling brightness and freedom of flower as to place it by itself. It averages 80 quilled petals to the blossom, being almost a full globe. Words cannot convey its beauty, it must be seen to be properly appreciated. This and *Sunrise* seem to be the

most admired lilies. It is an ideal plant in every way, being a heavy bloomer over a long season and producing an abundance of fine green leaves. We take pleasure in having introduced this lily to American gardens and recommend it without reserve. \$5.00.

**RENE GERARD.** A show lily of the finest type, having enormous flowers of a vivid, glowing rosy red. It will give a good account of itself wherever grown as it is a very vigorous plant and like others of its class, a persistent bloomer. The broad petals tapering to points give the flower a very pleasing appearance, which is intensified by the rich mahogany red heart of stamens. We have tested this lily out on a large scale and it has never failed to win approval. \$10.00.

**THE HARLEQUIN LILY—ESMERALDA.** A new, striking bicolor, unique in that the petals are marmorated pink and white in a most unusual way. The 7-inch flowers are very pleasing, the plant bearing a profusion of them. We introduce this as the first of a group of such bicolor combinations. \$7.50.

**NEWTON.** An outstanding variety of very attractive appearance. We know of no freer bloomer nor one of more lusty vigor. A box of these will always be a welter of blossoms. The petals are straight and spreading, giving the appearance of a tropical lily. The flowers are 8 inches in diameter, red in color and standing well above the water. The roots are very large and flower almost as soon as set out. If you have room for a fine novelty be sure and plant this one. \$5.00.



Hardy Lilies are profuse bloomers over many months.  
The variety pictured is Comanche.

## Hardy Water Lilies Should Form the Basis for Your Pool

No other group of lilies can compare with the Hardy Water Lilies for general usefulness as they are in bloom months before the Tropical kinds and remain in bloom until autumn cold sends them dormant. Being perfectly hardy in every State in the Union needing only the protection of a covering of boards and straw to carry them through the coldest winter they are up and in bloom with the early spring perennials. There is no plant in the garden giving such an abundance of cheerful flowers during the long spring and summer months with such a minimum of care. Provided with fresh soil or fertilizer in the spring they are content for many months to come, needing practically no attention.

They have a wide range of color, red, yellow, pink and copper of every hue and sufficient novelty of form and habit to make a collection of them a source of never-ending delight. From the wild species growing throughout the northern hemisphere the hybridist has evolved a series in which the colors and good qualities of all have been blended. It is difficult to realize that all the bright colored ones are just as easily grown as the commoner wild ones, but in fact many of the hybrids are far more at home in your pool, which is to be expected, as it was the aim of their creators.

## Twelve of the Best Hardy Water Lilies

Listed in this group are lilies of outstanding merit that have been popular with fanciers in many instances for a generation. Among them you will find a fine assortment of colors and great variation in flower and foliage. Every pool should have a few of these brilliant types.

**CONQUEROR.** In California this is one of the most popular red lilies grown, being outstanding in showiness, size and freedom of bloom. It also flowers when very small, trans-

planting seeming hardly to check it. The 8-inch crimson flowers are continuously borne the entire spring and summer, the plant soon sending up several flowers at a time. Our plants are mammoth roots. \$3.00.





Here is a Water Garden in a natural setting. The pool is not very large but a wise grouping of Water Lilies and marginal plants gives a park like effect. The border plants consist of Water Iris, Torch Lilies, Egyptian Paper Plant, Hardy Grasses, Water Canna and Arrowheads.

## Twelve of our Best Hardy Water Lilies—[Continued]

**COMANCHE.** The best of all sunset colors and the hardest of all water lilies. A steady free bloomer, one of the first to open in the spring and among the last to cease in the autumn. A vigorous plant, thriving and blooming under the most adverse conditions and perfectly at home in the tub garden or large pool. Pictured in full color on front cover (lower left). **\$3.00.**

**GLORIOSA.** The most popular red lily for all purposes. The exquisite flowers are above the average in size and are semi-double and of a most brilliant red. As an all around "useful" plant is has no peer. Does splendidly as a tub plant or will grace the largest park. Many of our customers write in that it is in bloom almost at once after planting and all agree that it is all that could be desired in every way. A patch fifteen feet square in our pools had an average of over 150 blooms daily through the entire summer. Pictured in color on front cover (upper right). **\$3.50.**

**SOMPTUOSA.** Among pink lilies it would be most difficult to choose a more satisfactory sort. As its name implies, it is a most sumptuous flower with a satisfactory depth to its color and satiny texture to its petals hard to define. Above the average in size, perfect in form and rather double, it is a splendid addition to our choice varieties. Generally listed as a rare and expensive plant; we are at last enabled to offer it at a popular price. Pictured in full color on front cover (upper center). **\$3.00.**

**PAUL HARIOT.** The development of this charming flower is most interesting; the opening petals being clear yellow, suffused with rose, becoming orange pink the second day and deepening to copper red on successive days. We have featured this beautiful lily because we consider it one of the best all around varieties in cultivation and of which the stock is always scarce. We are offering this season several hundred splendid roots. It is a most successful variety for the tub garden or small pool, blooming profusely and being a very sturdy hardy plant. If you enjoy harmonious coloring you will like this lily. **\$3.00.**

**GLADSTONE.** A large, dazzling white flower with broad waxy petals and sulphur yellow heart. You will agree that this chaste flower ranks high among the leaders. The color is pure snow white, making a perfect contrast to the colored kinds. A very free blooming variety, opening early in the morning as well as early in the season, the blossoms being from 6 to 8 inches across. An old variety that grows ever more popular. **\$1.50.**

**Masaniello.** We like Masaniello because it has such a rugged independent sort of disposition. It simply demands attention for it seems to be happy anywhere. The flowers have a very charming appearance as the illustration shows and unlike most hardy lilies are borne above the water on good stout stems, being particularly good as a cut flower. Pink in color with soft shaded sepals and pleasing fragrance. Thrives in shallow or deep water being very floriferous and a good variety for the beginner. **\$2.50.**





**SPLENDIDA.** This variety has all the qualities of a beautiful flower. A rich, deep strawberry pink, the heart fairly pulsing with color, a very graceful form and perfect habit, all the points of the general favorites. A long bed of this in our nursery fairly blazed with color all summer long and as the days shortened the color intensified to a rich red pink. Do not fail to include this new and rare French variety. Splendid roots. **\$3.00.**



**PAUL HARIOT**

**SUNRISE.** (*Odorata sulphurea grandiflora.*) This magnificent sunrise yellow lily was introduced by us over forty years ago from Marliac in France. It is the largest of all hardy lilies with blossoms over 11 inches across. Even as a young plant it surpasses all others in size. The magnificent flowers are raised on graceful stems above the water, where they show in pristine glory. The petals have a crepe-like texture and charming gracefulness quite unlike most gigantic blooms.



**The Giant Red Conqueror**

Whenever we have planted it it is invariably chosen for special attention. Best of all, its blooming season is from early spring until cut down by autumn frosts, while in California it blooms almost the year around. It is the most sensational hardy lily we catalogue and our stocks are always short. Pictured in color on front cover. **\$5.00.**

**JAMES BRYDON.** A gorgeously vivid rosy crimson blossom, full petalled and broadly cup-shaped. The color seems to glow in the sunshine and together with the bronzy red leaves gives the plant a character quite unexcelled. The petals are broad with rounded tips surrounding garnet red stamens. Brought out years ago, it is still uncommon and we have only a limited number to sell. **\$2.50.**

**FORMOSA.** The color of this lily is a bright La France pink, very soft and pleasing. It is a very large variety almost 7 inches across, opening out wide and with broad, round tipped petals and yellow stamens. It has a very pleasing fragrance that seems to go with just such a color. One of its best features is the freedom with which even the tiniest plants bloom in never ceasing abundance. In addition, the flower is splendid for cutting, lasting for several days in perfection. A bowl of these floating on their own leaves is a table decoration to grace any room. We consider this one of the best and a delightful surprise awaits you. **\$5.00.**



The very pretty water garden of Mrs. W. J. Grube of Delaware, Ohio. The pool was designed and built during spare moments at slight expense and has been a source of great pleasure to the entire family. Lilies will make a splendid growth in such a pool and when tastefully planted as this one is are the most interesting part of the garden.

**ATTRACTION.** An immense flower, remarkably bright in color and almost 8 inches across. The flower opens a brilliant garnet red while the four outer sepals are almost white. As the flower ages the color deepens to rich crimson. It is one of the freest blooming lilies in our pools and we have counted fifty open blooms on one box. Like Conqueror, it is a very vigorous, thrifty plant, blooming when young and all the time. We really cannot do it justice. Mammoth roots. **\$5.00.**



PINK AND WHITE MARLIAC LILIES

## Complete List of Hardy Water Lilies

### Sunset Colors

**COMANCHE.** The best of all the copper-colored sorts. Brilliant glowing amber red overlaid with yellow and deepening with age to orange red. A vigorous, free bloomer, thriving and blooming under the most adverse conditions and perfectly at home in tub garden or large pool. The hardiest of all water lilies. Pictured in full color on front cover. **\$3.00.**

**PAUL HARIOT.** We have listed this as one of the twelve best lilies. The colorful flowers are orange-pink, becoming darker with age. Fully described on page 10. **\$3.00.**

**Indiana.** A very fine copper-colored lily with yellow and rich pink tints predominating, deepening to red with age. The flowers run the gamut of colors; a plant often having three distinctly colored flowers at once. A free grower of moderate size bearing many flowers. **\$2.00.**

**Graziella.** Charming orange-pink flowers shading to a fine orange-red with age. A splendid variety for the tub garden and one you will enjoy for its unique color and pretty cupped form. **\$2.00.**

**Fulva.** Changeable flowers, opening out yellow overlaid with red, deepening to tawny red with age. Bold foliage heavily spotted with maroon. **\$2.00.**

**AURORA.** A very changeable variety, opening a creamy yellow, deepening through orange red to dark red as the flowers age. A box of these is a beautiful sight. Particularly suited for small pools as it is semi-dwarf in habit and free in flower. **\$1.50.**

**Chrysa.** A very fine variety for the tub garden. The flowers open a soft rosy yellow and daily deepen to vermilion. Splendid for small pools. **\$1.50.**



Aurora

**Solfaterre.** A flower with the same sterling qualities as Paul Hariot. On opening the petals are yellow, softly shaded with a rosy blush, as the flower ages the apricot shades become more pronounced until at last the bloom is suffused with red. The flowers are 5 to 6 inches across with a broadly rounded form and floating among the pads. A very vigorous and prolific bloomer. **\$3.00.**





**Sioux.** Rich chrome yellow flowers tinged with bronze deepening to orange red. A very brilliant flower and a sturdy free blooming plant. \$3.



Sioux

## Pink

**MARLIAC PINK.** Beautiful shell pink flowers of a most exquisite color when the buds unfold and with a very dainty perfume. The flowers are quite large while the plant is a vigorous free bloomer of the best type. The blooms open quite early in the morning. One of our most popular kinds. \$1.25.

**SOMPTUOSA.** One of the largest and best of the pink sorts. Listed among our twelve best lilies on page 10. Pictured in color on front cover (upper right). \$3.00.

**Rose Arey.** Starry, deep pink, intensely fragrant flowers of exceptional size. The bright, even, cerise color and the beautiful, full, starry form make this one of the best of the Odorata section. One of the most popular lilies. \$2.50 each.

Sirs: We bought an order of lilies last spring from your place and had wonderful success with them. They certainly have given an abundance of large and beautiful flowers.

MR. J. C. BLOUGH,  
Goshen, Indiana.

Dear Sirs: The lilies which I purchased from you last spring have repaid me in blooms for the little time it took me to start my pool and there has never been a day since they started to bloom there has not been flowers on the water.

ELSIE DUNCAN,  
Methuen, Massachusetts.

**Eugenia de Land.** A very charming sweet-scented lily of the Odorata section. The long spreading petals are deep pink near the base, blush at the tips, giving a very distinctive coloration. The blooms are of good size and semi-double. \$1.50.

**Morning Glory.** An exquisite soft shell pink lily, very beautiful, particularly when opening in the morning. The blossoms are large and quite freely borne. The plant is a good, robust grower. \$2.50 each.

**SPLENDIDA.** A fine strawberry pink flower, listed among our twelve best lilies. For a full description of this charming lily see page 11. \$3.00.

**Pink Laydeker.** (Laydekeri lilacea.) This is the queen of miniature lilies no other comparing with it. The miniature blossoms are perfect jewels, replicas of their larger neighbors in every minute detail. And best of all, it blooms from early spring to late fall and bears a rich profusion of flowers; we having counted 72 open ones on a box of them. No pool, however small, should be without this tiny plant. \$2.50.

**Carmine Laydeker.** (L. purpurata.) Pleasing carmine rose flowers borne in constant succession. A first rate variety for the small pool as the plant is dwarf in habit. \$1.50.

**Mrs. Richmond.** A magnificent flower of great beauty and exquisite coloration—rose deepening toward the glowing center in a most striking way. The massive flowers are many petalled, very large and most freely and continuously produced. The plant will never become common because it is a slow propagator. One of the rarest and handsomest varieties yet produced, attracting the attention of all who see it. \$10.



MASANIELLO

**MASANIELLO.** One of our most popular pink lilies. A vigorous grower and a good variety for all purposes. For a complete description it is listed among our twelve best varieties. \$2.50.

**Leviathan.** A very large flowered variety, 8 to 9 inches across, deep reddish pink in color and of charming informal shape. Free in flowering, vigorous in growth, it will soon take its place among the better standard kinds. The large, green leaves are flushed with red below. A most distinct and beautiful type. \$4.

**Galatee.** A very pretty and free flowering pink lily with leaves spotted maroon. Absolutely distinct in foliage and flower. A very hardy plant and one that will give satisfaction under all conditions. \$5.





**Venusta.** The darkest and deepest pink of the *Odorata* type. The color is a brilliant eosin pink verging on red, a hue universally admired. To appreciate its effulgence one must see it. The flowers are of good size, much substance and borne on stout stems above the water. The fragrance is the full rich odor of the wild pond lily. You will enjoy this splendid creation. \$5.

**James Brydon.** An old American variety with deep rosy red flowers and large blooms of perfect form. For a full description it is listed among our 12 best lilies. \$2.50.

**Odalisque.** A striking deep pink lily opening very early in the morning. Intensely fragrant. \$5.

**Pink Opal.** A pretty variety of the wild pond lily of Cape Cod. Graceful cup shaped flowers of deepest pink and quite fragrant. \$2.

**Neptune.** During the past summer we have had a good sized patch of these in full bloom and visitors to our place have agreed that it did not seem possible for a plant to flower any more freely. But the most striking feature of this flower we think is the color and texture. Imagine a deep pink flushed with smoky red at the base, the tips of the petals becoming lighter and with an indescribable velvety texture. The open heart is filled with garnet stamens. \$5.

**FORMOSA.** A very large La France pink lily that is described in full among our 12 best lilies. \$5.

**Amabilis.** This is just what the name implies—a very charming lily. Its very attractive starry form with pointed spreading petals set it apart from any of the older kinds. In color it is a bright silver pink and considerably above the average in size easily reaching 7 to 8 inches. You will be astonished at the number of flowers it produces in a season. \$5.

**Marliac Rose.** Deep pink fragrant flowers opening early in the morning. A very strong grower and one of the first to come up and flower in the spring. They are very fragrant with waxy petals lasting several days as a cut flower. \$2.

**MME. JULIAN CHIFLOT.** A magnificent star-shaped variety whose spreading petals reach 8 inches or more across. Beautiful tender pink in color with heart of golden yellow

stamens. The roots are very large, the plant being a strong grower while every leaf presages a blossom. One of the choicest. \$10.00.

**Goliath.** Exquisite, decidedly tulip-shaped flowers of a bright pink color. A noteworthy addition of long proven worth. \$5.

**Rosita.** A rather novel, cherry red flower with bronzy leaves. A moderate grower. \$5.

**Gloire de Temple-sur-Lot.** Exquisite, blush pink blossoms, with conspicuous yellow heart, perfectly double and with crumpled petals in form exactly like a splendid cactus dahlia. \$5.



Conqueror, one of the Best Red Lilies

**Souv. de Jules Jacquier.** Immense, basin-shaped blooms, 8 to 9 inches in diameter. They are deep rose pink in color, with a heart of clustering mahogany-colored stamens. The buds are very large and round, almost the size of a tennis ball. The leaves are distinct, the veins incised, the margins waved. Always in bloom. As the plant does not propagate freely, we have only a few plants to offer this season. \$25.

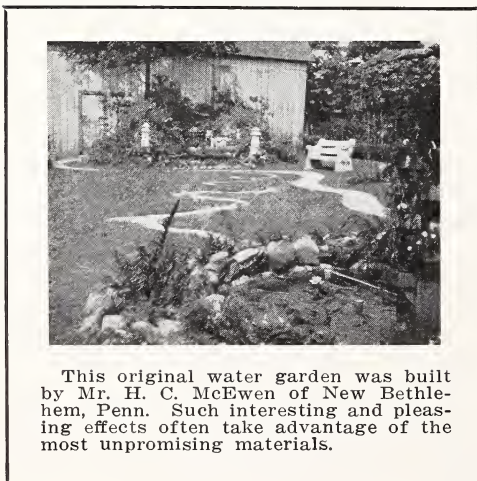
## Red

**ESCARBOUCLE.** The most brilliant flowered of all the red water lilies. Bright, intense red, deepening to crimson, with garnet stamens. A free flowering, strong growing variety, well repaying any attention given it. One of the hardest and best yet introduced. Pictured in natural colors on inside rear cover. \$5.

**CONQUEROR.** An immense flower 8 to 9 inches across and of a fine crimson color. It is one of the most popular lilies in California where it is best known. Listed among our 12 best lilies for full description. \$3.

**GLORIOSA.** Very large, almost double, bright red flowers. A fine plant and very popular. It is listed among our 12 best lilies and there a full description is given. Pictured in full color on front cover (upper right). \$3.50.

**MARLIAC RED.** (*Marliacea rubra punctata*). Bright red flowers freely produced. An old and tried variety of which stocks are always short. Similar to the other Marliac lilies except in its brilliant red coloring. A most dependable sort in every way. \$3.



This original water garden was built by Mr. H. C. McEwen of New Bethlehem, Penn. Such interesting and pleasing effects often take advantage of the most unpromising materials.



**Picciola.** We are at last able to offer sufficient stock of this fine lily. A very dark velvety crimson variety with the large blooms held erect just above the water. The leaves are heavily spotted with red and distinctively ovate. You will enjoy this one. \$5.



**Robinsoni**

**Robinsoni.** This has been a favorite with water gardeners for almost 30 years because of the beauty of the flowers which are a bright warm tone of red with orange red stamens. It is a particularly vivid color to group and is recommended for large plantings. \$3.

**Fabiola.** This forms an enormous root and has a very long blooming period. The flowers are red and borne aloft on tall stems. The plant is of exceptionally sturdy growth. \$5.

**Newton.** An outstanding new variety described in full on page 8. This is a most worth while plant. \$5.

**Vesuve.** A very dark and beautiful red lily. An incredible number of flowers is produced by each plant. The floating blossoms are large and full petalled with a satiny sheen. The leaves are beautifully spotted with maroon. The plant is of moderate size but vigorous. \$3.

**Rene Gerard.** This fine lily is fully described among the 12 best lilies which see. It is one of the largest lilies grown. \$10.

Dear Sir: Just want to let you know that the lilies and other plants arrived in excellent condition and went right on growing. They have been planted just 11 days and the lilies all have several new leaves and the water poppys have grown wonderfully. One of the lilies had three buds and these are developing nicely.

MRS. ESPAR L. W. COOK,  
Frederick, Okla.

**Atropurpurea.** Glorious, deep crimson flowers, 7 inches across, with heart of golden yellow. The blooms are extra large and very freely borne. \$7.50.

**ATTRACTION.** An immense flower and listed among our 12 best lilies. Remarkably bright red in color and very free in bloom. We have counted 50 blossoms on a single box of them. Fully described on page 11. \$5.

**Marliac Flame.** (M. flammea.) Deep red floating flowers on the order of Gloriosa. It is as free in flower as the other Marliac lilies and has all their qualities of vigor and hardiness. An old and choice sort. \$5.

**Meteor.** A very large fiery red lily of full form and with beautifully crumple petals. The plant is a splendid hardy grower and produces and abundance of bloom. The blossom is well set off by a heart of yellow stamens. \$5.

**Arethusa.** This old American hybrid deserves a place wherever choice plants are appreciated. The flowers are large, with fine broad petals and full form, deep rich crimson in color, with the velvety sheen of Neptune. The handsome leaves are spotted with red. When given ample treatment, the plant responds in a most gratifying way, blooming profusely. \$5.

**Murillo.** Cherry red flowers, borne in exuberant profusion on a very compact plant. In Europe this is one of the most freely planted varieties. \$3.

**Sultan.** A very attractive red lily deepening from rose to cherry red toward the heart. The flowers are large and always freely borne throughout the summer. \$5.

**James Hudson.** Enormous tulip shaped flowers with pointed petals. The flower is rich rose crimson, outer petals white stained rose. \$20.

**Red Laydeker.** (Laydekeri fulgens). One of the very best lilies we know. The flowers are of good size, vivid red and freely borne. In fact it is so good we have hesitated to feature it as stocks are scarce. A single plant will have from 3 to 4 flowers open at one time and a box of them will be a sheet of vividness for months. \$3.50.

**William Falconer.** The deepest red of all lilies being almost a velvety red-black the heart set off with garnet stamens. The leaves are beautifully marked and the plant a vigorous grower well known to fanciers. \$5.



**MARLIAC YELLOW**

## Yellow

**Marliac Yellow.** (M. chromatella.) Bright sulphur yellow in color with broad curving petals. It blossoms over the entire spring and summer, producing an endless succession of its large blooms. The leaves are handsomely spotted with maroon. A very vigorous plant and one of the best we have. Thrives under all conditions and is extremely hardy. One of our most popular sellers and the basis of many of our collections. \$1.50.

**Chromatella.** Another name for Marliac Yellow described above.





**SUNRISE.** (*Odorata sulphurea grandiflora*.) This is the largest of all hardy lilies reaching over 11 inches across. The immense sulphur yellow flowers have a gracefulness and charm all their own. For a full description of this fine lily see under 12 best lilies. Pictured in color on front cover. \$5.

**Odorata sulphurea grandiflora.** Now called Sunrise.

**Odorata sulphurea.** Fragrant yellow blossoms borne upright above the water the petals being crumpled. \$1.50.

**Yellow Pygmy.** Bright yellow miniature flowers borne in continuous profusion. A gem for the small water garden and no pool is complete without it. It is a very cheerful little flower and we are sure you will enjoy it. \$1.

**Moorei.** A new yellow lily with the same fine qualities as Marliac Yellow. It differs in being a shade darker yellow and in the leaves being finely spotted instead of mottled. A first class variety. \$2.50.

**Mexicana.** The wild Florida lily with bright yellow flowers. Increases by runners like a strawberry. Not hardy north of Philadelphia. \$1.

## White

**MARLIAC WHITE.** Snowy white, broad petalled flowers with bright yellow stamens. The flowers are 5 to 6 inches in diameter, fragrant and freely produced throughout the entire season. A most desirable plant, and one of our best sellers. \$1.



Dear Sirs: We received our seven lilies last spring in the best of condition and were very well pleased with the extras you put in to cover postage. At the time the picture was taken we thought the pool wonderful and our yard became a public park.

MRS. TRUMAN MILLER,  
Marshall, Michigan.

**Hermine.** The flowers of Hermine are pure white and have a beautiful starry form quite different from the broad petalled types. It is particularly suited to tub gardening and the small pool both because of its freedom in flower and the small space it requires. We like Hermine. \$2.

**GONNEERE.** This is one of the finest introductions we have secured in Europe but until this year we have had very little stock to offer. We can furnish about 200 roots this season and will fill orders in strict rotation. For a full description of this magnificent flower see page 8. \$5.

**Albatross.** Large, dazzling white, fragrant flowers. The pointed, spreading petals and golden heart set it apart from its fellows. Leaves marbled with maroon. \$5.



This very pretty pool in the garden of Mrs. Ellen L. Benger of Fargo, North Dakota, has been a source of enjoyment to the entire neighborhood. Water plants thrive in northern climates and with little protection are winter hardy.

Dear Sirs: The lilies I ordered on March 21st arrived in perfect condition. They have grown nicely and already (May 13th) there have been several blooms. I appreciate the extra plants and they too are doing well.

GLADYS CROMER,  
Anderson, S. C.

**Lactea.** Creamy white flowers. Plant of moderate size and vigorous growth. A novelty of recent introduction. \$2.50.

**Alba plennissima.** A novelty of recent introduction with globular snow white flowers. \$3.

**Gladstone.** A large dazzling white flower with broad waxy petals. Very free in flower and listed among our 12 best lilies. \$1.50.

**White Laydeker.** This charming lily recently reintroduced by us after having been lost to cultivation almost 30 years is again available. It is somewhat larger than the Chinese pygmy lily having numerous rounded snow white petals and a distinct golden heart together with a pleasing tea fragrance. All the Laydeker family of lilies have several points in common being pygmies in size, very hardy and floriferous and with a distinct tea rose fragrance. Every one of the group is a gem. \$2.

## Cover Collection

### COLLECTION NO. 29

The beautiful collection of Hardy and Tropical lilies pictured on our cover. Five wonderful lilies.

**Comanche**  
**Sunrise**

**Panama Pacific**  
**Somptuosa**  
**Gloriosa**

\$17 value, Post Paid \$14.50.

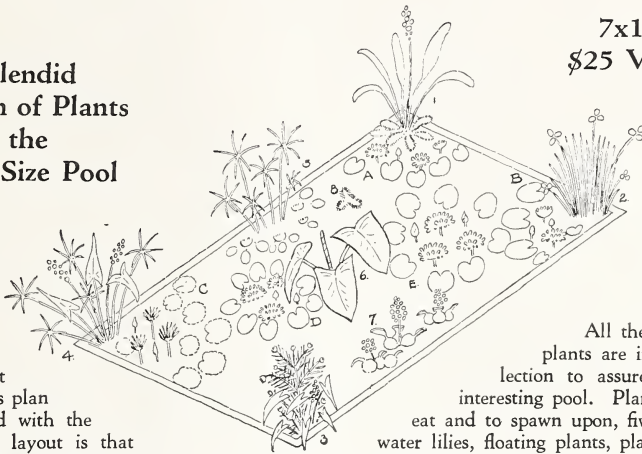




# Fifty Beautiful Water Plants

**A Splendid  
Collection of Plants  
for the  
Popular Size Pool**

7x10 feet  
\$25 Value for  
\$17.50



As the picture at the right explains, it is easy to follow this plan and easy to succeed with the plants listed. The layout is that of the typical successful pool of our patrons and has been duplicated by scores who have written to tell us how pleased they were with the wealth of blossoms and the rapid way the lilies have taken hold. Hardy water lilies often flower within a month after they have been planted, particularly our vigorous, hardy California raised stock. Our plants are all raised in concrete tanks and their stored up energy will surprise you.

All the different kinds of plants are included in the collection to assure you of a really interesting pool. Plants for your fish to eat and to spawn upon, five glorious colored water lilies, floating plants, plants for the centerpiece, upright plants for the corners and graceful flowering plants for the pool margin. Our desire in this collection has been to give you a well-balanced selection of the most popular plants. The lilies are all choice varieties with a fine range of color and a long blooming period. Complete planting instructions will be found by turning to the plant as listed in this catalog. Full cultural directions are given.

Work from Johnson's Easy Plans

## Our Famous Complete Pool Collection

**Use the Key Numbers on the Plan to Arrange Plantings**

*Collection No. 3*

### FIVE GLORIOUS WATER LILIES

- A—Escarboucle  
The most brilliant red lily.
- B—Paul Hariot  
The finest orange pink.
- C—Rose Star  
Starry rose pink.
- D—Marliac Yellow  
The most popular yellow.
- E—Conqueror  
The giant crimson lily.

### 12 BEAUTIFUL BORDER PLANTS

- 3 Ornamental Grasses.
- 3 Torch Lilies.
- 6 Assorted Perennials

### PLANTS for CENTERPIECE of POND and CORNERS

- |                   |                   |
|-------------------|-------------------|
| 1 Lance Leaf      | 1 Parrot Feather  |
| 3 Water Iris      | 1 Porcupine Grass |
| 1 Primrose Willow | 3 Jap. Arrowhead  |
| 4 Giant Arrowhead | 2 Umbrella Palm   |
| 3 Umbrella Palm   | 3 Water Poppy     |
| 1 Water Taro      | 1 Giant Arrowhead |

### PLANTS FOR THE FISH

- 6 Bunches Fish Plants
- Spawning Plants
- 6 Water Hyacinths



Rose and Purple Star Lilies

## Tropical Star Lilies

Each year we become more firmly convinced that the Star Lilies are among the most satisfactory lilies for all purposes. For the small pool, for the park and for cut flowers they have no superiors. They are easy to grow, the freest of all in flowering and of sturdy constitution, thriving with a minimum of care. We can ship these lilies as sprouted tubers at any time of the year with perfect safety and they may be set out in your pool along with the hardy plants with the perfect assurance that as the weather becomes warm they will shortly appear and almost at once come into flower. Plants started with our tubers generally have several crowns, each one of which will flower freely. This bulb may be detached any time after the plants have started to flower and may be stored in moist sand until the following spring, when it may be sprouted again.

The starry blossoms, brilliant in hue and scented with the fragrance of Lily of the Valley, are produced in endless profusion all summer long. One may reasonably expect 100 flowers in a season and we have actually counted over 750 flowers from three tubers planted together in a box during the summer. The flowers are 6 to 8 inches across and borne on stout stems a foot above the water. The photograph well shows their habit and freedom of bloom. We use these and recommend them as the basis of all plantings of water gardens for the astonishing display of color they give and their utter dependability under any and all conditions. All of the Star Lilies are alike in the way they grow, differing only in their colors. In the early spring we ship these as sprouted tubers, the tubers averaging in size that of a walnut, each being so packed with vitality as to form a flowering plant in an incredibly short time. During May and June we ship them as potted plants.

**Winter Care of Star Lilies.** After the first heavy frost of autumn remove the plants, with a ball of earth, to the cellar, cutting off old leaves. After a month wash the soil away, and one or more hard, rough tubers will be found. Store in a pot of moist sand where temperature is over 50 degrees. Replant after May 1st. In mild regions, leave undisturbed in pools.

For very early blooms the tubers may be placed in a pail of water in a warm sunny window where the temperature is about 70 degrees. They will sprout very rapidly, leaves soon coming to the surface and roots appearing at the top of the tuber and may be planted out as soon as safe from cold snaps.

**ROSE STAR.** Clear, bright rose pink. Illustrated in full color on rear cover. See page 19 for full description. \$2.

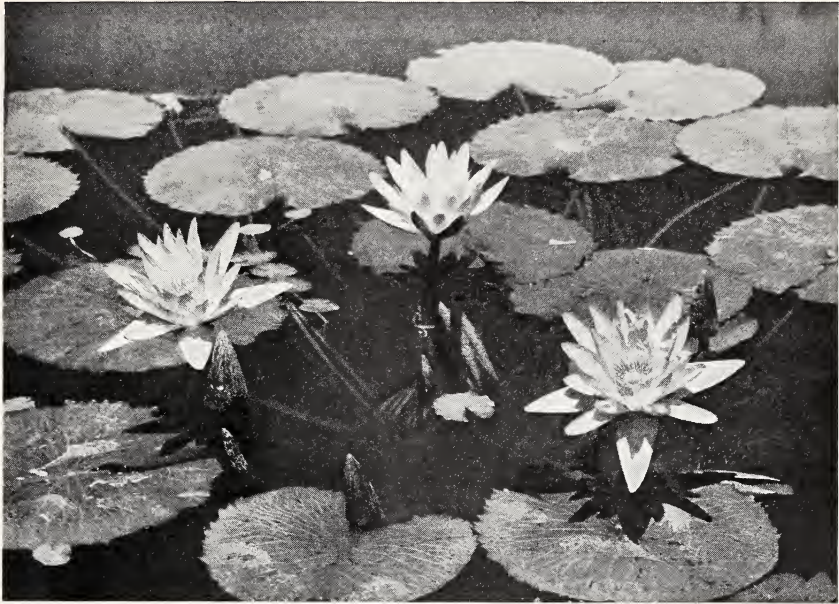
**PURPLE STAR.** Brilliant deep blue. A very intense and luminous color. Try planting Rose and Purple Star together in the same box. It is the most beautiful combination we know. \$2.

**Pink Star.** Bright silver pink flowers with yellow heart. \$2.

**Red Star.** Rich claret red. A very brilliant color. \$3.

**Blue Star.** Azure blue flowers. \$2.





The Beautiful Pennsylvania

## A Few of the Finest Tropical Lilies

We list here a few of the very best varieties, those that our experience has shown are particularly liked by our customers. Among them are some of all the different groups every plant being of outstanding merit. The flowers are of great size and quality and we feel sure that each of them will deserve your praise.

**BLUE TRIUMPH.** The most popular blue lily yet offered. Immense dark blue flowers 10 to 13 inches in diameter. This exquisite lily was raised at our nursery and has received the admiration of all who have grown it. It is very graceful in form with long curving petals, golden yellow center and exhaling a delicate and penetrating perfume. The plant is all that could be desired, vigorous, clean and freeblooming, carrying two or three open flowers throughout the summer. Pictured in natural colors on inside front cover. **\$2.50.**

**ROSE STAE.** The starry flowers are a brilliant rose pink and scented with the fragrance of Lily of the Valley. They are produced in endless succession all summer long often there are 4 to 5 flowers open at once. The flowers are 6 to 8 inches across and are borne on stout stems a foot or more above the water and are excellent for cutting, lasting for 5 or more days. Illustrated in full color on rear cover. **\$2.**

**PANAMA PACIFIC.** A plant of perfect habit with pretty spotted leaves and flowers of rich rosy red as the buds open deepening to royal purple in the fully expanded flower. An early and continuous bloomer and altogether a very satisfactory plant. Our leaf propagating lilies are raised the summer preceding their shipping and all have flowered in the pots in which they are shipped. You will enjoy them and particularly their interesting habit of producing flowers and plantlets on the older leaves. We particularly recommend this for the tub garden. Pictured in natural colors on front cover. **\$2.50.**

**GEORGE HUSTER.** A night blooming lily of great beauty with immense brilliant ruby red flowers 10 to 12 inches across. The fine scalloped bronze red leaves are not the least of its attractions, and give the plant a truly royal mien. The flowers open in the evening and remain open until noon of the following day continuing to open on several successive nights. There is no more regal sight than these immense glowing flowers in the morning sunlight. No garden is complete without at least one night blooming lily. **\$1.50.**

**GENERAL PERSHING.** This beautiful variety has gained wide favor among garden lovers as it is a very large flower of exquisite warm pink and perfect in form. They open early in the morning diffusing a piquantly sweet fragrance throughout the garden. They are broad and basin shaped with wide curving petals and very imposing in appearance. One of the most distinct of the pink, day blooming lilies. **\$5.00.**

**MRS. GEORGE H. PRING.** Immense snow white flowers and an excellent contrast to the colored kinds seeming to intensify colors near it. The young leaves are very prettily spotted with brown as they unfurl. Happily it will accommodate itself and bloom freely in a tub and during the summer we have scores of them blooming in pots. When allowed ample room it makes a most luxuriant growth spreading from 5 to 10 feet and having flowers almost a foot across. It was raised at the Missouri Botanical Gardens as was also the General Pershing. **\$2.50.**



Panama Pacific. A good leaf propagator.

## The Leaf Propagating Tropical Lilies

All the varieties of this group have the interesting habit of producing flowers and young plants in a ring about the mother plant on the older leaves. The tiny plants are formed where the petiole joins the leaf, soon throwing out leaves and roots of their own and often having several flowers before the leaves are hardly formed. If left on the old plant they flower very quickly, forming a floating ring about the parent with flowers 2 inches or so across, replicas in every way of the mother plant. In the wild state these slowly become detached and float away to start new colonies in the bays of the slow moving rivers they inhabit.

Their particular appeal to you is the great freedom with which they bloom and their great hardiness. They have thick tough leaves on short stems and will grow in quite cool water, while sudden temperature changes will not affect them. They are the lilies par excellence for tubs and small pools for they bloom freely in small pots. We particularly recommend these to our customers and decidedly so for those growing tropical lilies for the first time. Everyone can succeed with them. This type of tropical lily can be shipped several days earlier than others except the Star Lilies which see.

**PANAMA PACIFIC.** Bright rosy red on opening, deepening to royal purple in the fully expanded flower. For the full description of this useful variety see page 19. Pictured in color on front cover. **\$2.50.**

**August Koch.** This fine plant was raised in Garfield Park, Chicago, by August Koch, and is a credit to its famous raiser. The fragrant blossoms are of a splendid size and deepest blue in color. It is a very free bloomer and is very persistent, quickly becoming established after being planted and flowering continuously. We recommend this as a very good plant for the beginner as it thrives with little attention. **\$2.50.**

**Amethyst.** This new variety raised in our pools is a seedling of Panama Pacific but has larger flowers of a clear amethyst blue, set off by 4 pink sepals. It has proven a very vigorous plant and continuous bloomer, producing flowers on the leaves much quicker than any variety we know, even the tiniest leaves bearing plantlets. For a full description of this fine novelty see page 8. **\$3.**

**Wilson Gigantea.** The blossoms are azure blue with purple shaded stamens and 8 to 9 inches in diameter. The even blue coloring is very charming and the flowers are fine for cutting. **\$2.50.**





**Mrs. Woodrow Wilson.** An excellent variety for the tub garden, with sky blue flowers of pleasing form and intensely fragrant. The plant is of the easiest culture, flowering soon after being set out and continuing even in crowded quarters over a long period. This variety will sometimes seed and it is very interesting to raise the tiny plantlets. **\$2.50.**

## Tropical Blues

### COLLECTION NO. 17

Harmony in Blue. Three distinct shades of blue and the best and easiest tropicals to grow. Plant them for early and continuous bloom. **\$6.25 value. Post Paid \$5.**

- Panama Pacific.** Purple.
- August Koch.** Blue.
- Dauben.** Azure.



**August Koch.**

One of the best blue lilies.

**Dauben.** The parent of all present-day leaf propagators, a hybrid raised in Germany many years ago. The flowers are pale blue with yellow center. **\$1.25.**

# General List of Tropical Show Lilies

These glorious Tropical Water Lilies are becoming more popular every year and justly so for their immense size, sweet and penetrating fragrance, brilliant colors and their desirability as a cut flower make it hard for the flower lover long to withstand their charm.

There is a great variety of them, some blooming during the day, others opening in the evening their flowers being pollinated by moths. They have a great adaptability as regards space requirements, the same plant growing and flowering freely in a tub garden or where root room is unrestricted, making a growth 10 to 15 feet across. Of course in the tub garden their flowers will be smaller than in the large pool, but the amount of flowers produced will astound you; 100 flowers during the season being not at all uncommon. Our Star Lilies have often produced 200 flowers in a single season.

**BLUE TRIUMPH.** This splendid new variety raised at our nurseries is one of the most popular of all the show lilies. The immense deep blue flowers reach 13 inches across and are of the most graceful form with long curving petals and yellow heart. A very free bloomer with from 2 to 3 blossoms all summer long. We have grown plants with over a dozen open flowers, each exceeding a foot in diameter. For full description see page 19. Illustrated in natural colors on inside front cover. **\$2.50.**

**MRS. GEORGE H. PRING.** Immense snow white flowers freely borne through the entire summer. The only white flowered tropical show lily. A very satisfactory plant listed among our 5 best plants on page 19. **\$2.50.**

**Capensis.** An old species coming from Africa. The flowers are cup shaped and rich sky blue in color. **\$1.50.**

**William Becker.** Dark violet blue flowers. A starry petalled, very fragrant variety. **\$2.**

**GENERAL PERSHING.** A very popular variety with large warm pink flowers and intense fragrance. The flower is very distinct and imposing with wide curving petals. We have given a full description of it on page 19. **\$5.**

**PENNSYLVANIA.** A magnificent old variety with rich deep blue flowers 10 to 12 inches across. The buds are prettily speckled with maroon markings and open an intense blue. The stamens are tipped with blue, the cup yellow, a most pleasing combination. The flowers emit a powerful, spicy perfume. The plant is vigorous and free in flowering. **\$2.50.**

**Zanzibar Blue.** Large, fragrant blue flowers with fine yellow centers. Our strain of clear blue flowers is unsurpassed. These well known lilies are very beautiful and hardy. **\$1.50.**



**Blue Beauty**



**Mrs. Edwards Whitaker.** One of the largest flowered of the show lilies with flowers over a foot across. The fragrant sky blue flowers are freely borne. It is a very hardy plant and may be counted on to make a show. It is a good plant for the beginner. **\$2.50.**

**BLUE BEAUTY.** An old and beautiful variety. The large and sweetly scented flowers are clear blue in color set off by yellow and blue stamens. The leaves become very large and are spotted with purple beneath. A thoroughly satisfactory plant. **\$2.50.**

**William Stone.** Star shaped deep blue flowers 5 to 7 inches across, borne on tall stem above the water. The flowers are of much substance and last a long time when cut. A very beautiful plant and a free bloomer. **\$2.**

**Mrs. C. W. Ward.** The rose pink flowers are borne on stout stems a foot above the water. They have a very piquant perfume and scent the entire garden in the morning. The deep green leaves are very prettily scalloped. A fine plant. **\$2.**

**Caerulea.** The wild blue Lotus of Egypt. The fragrant sky blue flowers are borne in endless succession until the frosts of autumn. Well suited to the tub garden. **\$1.50.**

**Stella Gurney.** Bright silver pink flowers with long pointed petals and a yellow heart. The spicy fragrance scents the entire pool. The plant is very free in flower with large light green pads ruffled at the margins. A most satisfactory and pleasing variety. **\$2.**

**HENRY SHAW.** A very popular large flowered blue lily. It is a blue counterpart of the fine General Pershing and a very vigorous plant, producing an endless succession of huge basin shaped blooms of deepest blue. A very fine plant. **\$2.50.**

**VISITORS.** For many months there is a fine display of water lilies at our Nursery and you are cordially invited to visit us.

**Hynes is located** 15 miles south of Los Angeles, adjoining Long Beach. Our ponds are at 400 Michigan Avenue, near the corner of Jackson Street, Hynes.

From Los Angeles drive out Long Beach Boulevard to Washington Street, Compton, then 3 miles east to Michigan Avenue, then 1 mile south to the Nursery.



Gentlemen: We were very proud of our ponds and have had more enjoyment from them than any other part of our gardens. The designing and work has all been done by my husband and two brothers and they feel the results well worth the labor. You can see how beautiful our Blue Star and Lotus have been.

MRS. C. W. BLOCK,  
Portland, Ore.



Tropical lilies and Egyptian Lotus in the pool of Mrs. Glenn H. Kleinbeck, Murray, Iowa. This well shows the vigorous and rapid growth our plants will make during the warm summer days. Lotus shows several buds and flowers though only planted in the spring.

## Star Trio

### COLLECTION NO. 28

Beautiful Star Lilies to provide an abundance of bloom, fragrance and color in your garden. Three strong tubers. **\$6 value, Post Paid \$5.**

Rose Star  
Purple Star  
Pink Star

## Jewel Collection

### COLLECTION NO. 18

Here are 5 of the best Tropical Lilies in a full range of color and worthy of a place in any pool. Price **Express Collect \$11; Post Paid \$13.50.**

Blue Triumph. Deep Blue.  
General Pershing. Pink.  
Juno. White Night Bloomer.  
Mrs. Edwards Whitaker. Light Blue.  
Mrs. George H. Pring. White.



## Interesting Books

For the water gardener who enjoys knowing more about these fascinating plants.

**Water Gardening.** By Peter Bisset. Covers all points of interest. Culture, hybridizing, goldfish and much of the history of water lilies. Mr. Bisset is one of the ablest plantmen in America. \$5 per copy.

**Water Gardens and Goldfish.** By R. V. Sawyer and E. H. Perkins. An interesting account of the care of water plants and goldfish. \$1.65.

**Goldfish Varieties and Tropical Aquarium Fishes.** By Wm. T. Innes. 302 pages of aquarium lore. The only comprehensive work covering both tropical and goldfish. A very interesting book. 1929 Edition. \$4 per copy.





## Tropical Night Blooming Lilies

For the person who has little time during the day to enjoy their pool, these are the lilies par excellence, for they open in the evening and remain open until shortly before noon of the following day, opening on several successive evenings. Really the name nightblooming does not do them justice for they form one of the most striking features of the pool during the morning. Their gorgeous coloring and exotic appearance make them favorites with all who are familiar with them.

The flowers are larger than the average, some being cup shaped, others opening out flat. The plants are very prolific, the crowns stooling out as the season advances, well grown plants having 7 to 8 flowers in all stages of development at the same time. They bloom quite freely in the small water garden, George Huster and O'Marana being especially good. The plants are so satisfactory and easily grown that every pool should have at least one.

**GEORGE HUSTER.** A large brilliant red flowered variety, the blossoms 10 to 12 inches across. The leaves are a beautiful bronzy red and crimped at the margins, being very ornamental. A strong free blooming plant and one of the most desirable varieties cultivated. See under the 5 best tropical lilies for complete description. **\$1.50.**

**JUNO.** Immense pure white flowers, opening widely, the central disk being surmounted by a cone of saffron yellow stamens. The plant is free blooming with large glossy green and finely-toothed leaves. Seen in the dusk of evening they are a never-to-be-forgotten sight. A splendid and stately flower. **\$2.50.**

**O'MARANA.** Rosy pink flowers of largest size, each petal having a distinct white stripe, the effect intensified by the central group of orange red stamens. The 10-inch flowers are freely and continuously borne over the long summer months. One of the finest varieties offered. **\$1.50.**

**Rubra rosea.** A fine water lily, freely producing blooms of a brilliant rosy carmine color. In the sunlight the petals seem to fairly pulsate with color. An oldtime favorite. **\$1.50.**

**Lotus dentata.** A large snowy white variety with sulphur yellow stamens. The blossoms are 10 inches in diameter. **\$1.50.**

**Dean.** Clear pink flowers, decidedly cup-shaped with very wide petals and deep orange stamens. **\$1.50.**

**Frank Trelease.** The deepest of the red flowered night bloomers, of a very rich glowing crimson. The leaves are a beautiful dark bronze. **\$1.50.**

**Minerva.** A large snowy white bloom, broad petalled and of graceful shape. **\$2.50.**

**Tanganyika.** A new white variety imported by us from Africa. **\$2.**

### Tropical Night Blooming Collection

#### COLLECTION NO. 15

Two splendid night blooming lilies in the most popular colors and varieties, brilliant red and snowy white. Planted together in a box they will make a wonderful show. **Post paid \$4.**

**Juno**  
**George Huster**



## Sacred Lotus

The beautiful and stately Lotus is perhaps one of the most interesting plants in the water garden. Many peoples have venerated it, for it has seemed to express to them the relation of the spirit to the world of matter—a chaste flower rising from the mire. Growing wild in the Eastern Tropics, India, China, Papua, etc., it yet is perfectly hardy anywhere in the United States and southern Canada, thriving in the heat of our summers and retreating deep into the mud at the approach of winter. The rhizomes look like two or three bananas strung end to end and are easily broken, so that care should be exercised in handling them.

In planting the rhizomes settle them gently into the mud with the growing end just below the surface. They grow well in water 2 inches to 12 inches deep and require the same general care as water lilies. The plants should be confined within boxes, for otherwise their rampant growth would soon choke out the other plants.



Sacred Lotus

**Sacred or Egyptian Lotus.** Breathing the spirit of the Orient, this strange plant has from ancient times been venerated and held in mystic awe. The immense pink flowers exhaling a peculiar and characteristic fragrance, the large umbrella-like leaves borne on their tall stems, the flower buds rising to expand above them, all lend the plant a most stately appearance. This exotic plant was first introduced by us some forty years ago and all the present day plants are descendants of this first importation. **\$2.00.**

**Albun striatum.** White splashed with crimson. A unique color combination and very showy. Very large flowers. **\$2.50.**

**Double Chinese Lotus.** (N. pekinensis rubrum plenum.) Huge double red flowers. A very choice variety giving a tremendous display. Flowers like giant roses produced in great profusion. A truly magnificent plant with flowers a foot across. **\$5.00.**

### Oriental Trio

#### COLLECTION NO. 31

Three fine lotus in an assortment of colors. A very fine group. **Post Paid \$6.**

**Sacred Lotus.** Pink.

**Flavescens.** Yellow.

**Shiroman.** White.

**Double White Japanese Lotus.** (Shiroman.) Giant, very double snow-white flowers like huge pompons. A striking plant and fit companion to the Chinese Lotus. **\$3.50.**

**Magnolia.** Immense, loosely petalled, snow-white flowers. A very handsome plant. **\$2.50.**

**Flavescens.** Beautiful sulphur yellow flowers. This fine plant was introduced by us some years ago and because of its fine color and freedom of bloom quickly won a place in the first rank. A fine variety for the tub garden. **\$2.00.**

## Tropical Water Lily Seed

For those who care to experiment with raising water lilies from seed we offer a selection of the best Tropical kinds as very few Hardy lilies bear seed. They will flower the first year. Sow them in soil in a pan, covering lightly with sand, then gently submerging them in water about 6 to 12 inches deep. If sown early, put them in a pail in a warm sunny window, planting out in June.

**Note:** Do not count on early bloom from seed. Plant tubers or potted plants for early bloom.

**Caerulea.** Blue.

**Juno.** White Night Bloomer.

**O'Marana.** Pink Night Bloomer.

**Eubra rosea.** Red Night Bloomer.

**Ovalifolia.** Blue.

**Capensis.** Brilliant Blue.

**Mrs. Robert Sawyer.** Pink Leaf Propagator.

**Zanzibar.** Purple.

**Zanzibar.** Blue.

**Zanzibar.** Pink

**Sacred Lotus,** 50c per packet.

Seed of the above varieties at 35 cents per packet. 3 packets for \$1 postpaid. Set of 10 varieties **\$2.50.**

### Tropical Seed Collection

#### COLLECTION NO. 32

Set of 10 packets of Tropical Water Lily seed. **Post Paid \$2.50.**





# Oxygenating Plants for the Pool

## To Keep the Water Clear and the Fish in Good Health

These very useful plants will serve to keep the pool in natural balance, supplying an abundance of oxygen to the water. Where fish are kept they will give a perfect balance so that the water need rarely be changed.

The plants listed here are the ones giving the best results and supplying food for the fish and a place for them to spawn in the spring. A few bunches planted in pots or along with the water lilies will stock the pool as they make rapid growth.

For the indoor fishbowl it is best to place an inch of clean sand on the bottom and to plant the various kinds in this, arranging them with the taller varieties in the back and allowing such plants as Azolla to float on the surface.

**Fish Grass.** (*Anacharis canadensis gigantea*.) The most used variety. Graceful stems with whorls of deep green leaves. 15c per bunch.

**Ludwigia Mulertii.** One of the prettiest submerged plants. Oval leaves tinged with pink. 15c per bunch.

**Ludwigia Californica.** A very pretty yellow flowering plant with ovate leaves. 15c each.

**Eel Grass.** (*Vallisneria spiralis*.) Long ribbon-like leaves. Grows well in aquaria. 15c each.

**Sagittaria natans.** Long strap-like leaves of vivid green. 15c each.

**Sagittaria sinensis.** Broad strap-like leaves of deep green. 15c each.

**Water Hyacinth.** (*Eichornia crassipes*.) The well-known floating Water Hyacinth. 15c each.

**CRYPTOCORYNE WILLISII.** One of the most beautiful and rare of all aquarium plants. Lanceolate leaves with crisped margins. The rare flowers red, like a miniature Calla Lily, to which family it belongs. 50c each.

**Cryptocoryne Griffithii.** Very rare and unique with ovate mottled leaves and creeping stem.

This is the first time these two plants have been catalogued in America. \$1 each.

**Giant Eel Grass.** Novelty with gigantic ribbon-like leaves a yard long. 50c.

**Umbrella Palm.** Keep in a pot near the surface. A very pleasing effect in the aquarium. 25c.

**Hair Grass.** Forms a deep green carpet on the floor of the aquarium, giving a beautiful lawnlike effect. A splendid protection for young fry and eggs. \$1 for 25 plants.

**Coontail.** Finely dissected leaves of deep green color. 15c per bunch.

**Parrot Feather.** Bright parrot green whorls of filmy foliage. 15c per bunch.

**Duckweed.** Tiny frond-like leaves. Fish are very fond of them. 25c per portion.

**Floating Fern.** (*Azolla*.) Pretty floating plants turning bronze red in autumn. Fish are very fond of them. 25c per portion.

**Water Poppy.** A very satisfactory aquarium plant with yellow flowers. 15c.

## Aquarium Supplies

### Fish Food

Goldfish should be fed twice a week. Do not feed too often or too much as overfeeding is a prolific cause of ills.

In the aquarium feed only what they will pick up in five minutes.

Tropical fish may be fed lightly once each day as they are more voracious feeders.

**Natural Fish Food.** A properly balanced food for both the aquarium and pool. Feed twice a week to keep your fish in good health. \$1 per pound.

**Dried Shrimp.** Shredded shrimp meat makes an ideal food for fish. Feed once or twice a week. \$1 per pound.

**Tropical Fish Food.** Specially prepared for Tropical fish. This is a safe healthful food for the tiniest fish. 3 boxes for \$1.

Add 10 cents per pound for postage when ordering fish food separately.

### Water Snails

Water Snails are good scavengers both for the aquarium and pool. They feed on decaying vegetable matter and on the green algae that may form on the walls. A few pair will rapidly stock your pool.



**Japanese Trap Door Snails.** The largest and hardest of the common water snails. Very satisfactory. 50 cents per pair.

**Ramshorn Snails.** A long-lived pond snail. Useful. 25 cents per pair.

**Red Ramshorn.** Beautiful bright red in color. Pretty and very useful. 50 cents per pair.

**African Paper Shell.** A prolific species with pretty spotted shell. 25 cents per pair.

### COLLECTION NO. 30

Four pairs of assorted Water Snails, shipped to you Post Paid \$1.



# Our Famous Post Paid Collections

## All Collections Listed in Our Catalog Sent Post Paid Anywhere in the World

These collections are composed of the best plants listed in the preceding pages and are designed to simplify ordering by giving a series of harmonious groupings at small expense. In selecting the collections best suited to your own pool, take into consideration the area. A pool 4x6 feet will accommodate 3 to 4 lilies as well as a number of other water plants such as will be found in Pool Plant Collections.

**NOTE:** When other plants are ordered along with these prepaid collections please add sufficient postage to cover. See page 2 for instructions.

(In Ordering Please Use Collection Numbers)



### Complete Small Pool

4x4 feet

#### COLLECTION NO. 4

A well balanced grouping that will attractively furnish a small pool. A splendid value. **Post Paid, \$5.00.**

**Paul Harlot or Conqueror.** Your choice.  
**Marliac White.**  
10 Assorted water and marginal plants including fish plants.

### Complete Large Pool

10x15 feet

#### COLLECTION NO. 5

Eight brilliant and colorful lilies in both Tropical and Hardy kinds, and a full range of color. A well-balanced group for the larger pool with every class of water plant included.

**Shipping Instructions:** The three Tropical lilies will be shipped separately in May at the proper planting time at no extra expense to you. All other plants will go forward at the earliest date permissible for your locality. **Post Paid, \$20.00.**

**Rose Star.** Rose pink.  
**Panama Pacific.** Royal purple.  
**August Koch.** Bright blue.  
**Comanche.** Orange red.  
**Marliac Red.** Bright red.  
**Somptuosa.** Giant pink.  
**Gonnere or Sunrise.** Your choice.  
**Marliac Yellow or Gladstone.**  
20 Assorted water and marginal plants.

### Complete Medium Pool

4x6 feet

#### COLLECTION NO. 6

You will enjoy this assortment as it will comfortably fill your pool and give an abundance of bloom all summer long. **Post Paid, \$10.**

**Comanche.** Orange red.  
**Masaniello.** Pink.  
**Marliac Red.** Bright red.  
**Marliac Yellow or White.** Your choice.  
15 Assorted shallow water, bog and marginal plants.

### Complete Medium Pool

7x10 feet

#### COLLECTION NO. 7

Five rainbow-colored water lilies, each one a real gem. They will bloom throughout the summer and will give you a wealth of satisfaction. Twenty-five plants for a prize pool. We think you will agree there is no room for improvement in this splendid set. **Post Paid, \$15.00.**

**Comanche.** Orange red.  
**Marliac Red.** Bright red.  
**Somptuosa.** Giant pink.  
**Sunrise or Gonnere.** Your choice.  
**Gladstone or Marliac Yellow.** Your choice.  
20 Assorted Plants for the pool and to plant about the margin.





## Marliac Trio

COLLECTION NO. 8

One of the most popular collections we have offered. **Post Paid, \$3.00.**

- Marliac Yellow.
- Marliac Pink.
- Marliac White.

## Sunset Collection

COLLECTION NO. 9

Two of the most colorful lilies grown at a price nowhere else to be found. **Post Paid, \$5.**

- Comanche. Orange red.
- Solfaterre. Apricot Yellow.

## Los Angeles Trio

COLLECTION NO. 10

A very fine collection of three Marliac lilies, each one a sure, steady bloomer and all of the easiest culture. **Post Paid, \$4.00.**

- Marliac Red.
- Marliac Yellow.
- Marliac White.

## Pioneer Trio

COLLECTION NO. 11

Three of the best and brightest lilies. You will enjoy these for a small pool. **Post Paid, \$5.00.**

- Paul Harlot. Orange Pink.
- Marliac Red. Bright Red.
- Masaniello. Rose.

## Pygmy Trio

COLLECTION NO. 12

Three dwarf lilies. You will enjoy this set for a small pool. **Post Paid, \$3.25.**

- Indiana. Copper red.
- Yellow Pygmy.
- Chrysanta. Apricot.

## Fiesta Collection

COLLECTION NO. 14

Three of the most popular colors and varieties. A quality group. **Post Paid, \$7.50.**

- Gloriosa. Most popular red.
- Comanche. Most popular orange.
- Somptuosa. Most popular pink.

## Night Blooming Harmony

COLLECTION NO. 15

A splendid duo of the most popular night bloomers. **Post Paid, \$4.00.**

- Juno. Best white.
- George Huster. Best red.

## Aurora Trio

COLLECTION NO. 16

A very attractive group of choice colors **Post Paid, \$5.00.**

- William Falconer. Deepest red.
- Marliac Yellow. Canary Yellow.
- Masaniello. Rose.

## Tropical Blue Trio

COLLECTION NO. 17

Harmony in color with every one of a different hue. Three of the easiest to grow and best tropical blues that will be in bloom almost at once. **Post Paid, \$5.00.**

- August Koch. Deep blue.
- Panama Pacific. Royal purple.
- Dauben. Sky blue.

## Jewel Collection

COLLECTION NO. 18

Here are five of the best tropical lilies in a full range of color and worthy of the finest pool. Price Express Collect, **\$11.00; Post Paid, \$13.50.**

- Eine Triumph.
- General Pershing.
- Juno
- Mrs. Edwards Whitaker.
- Mrs. George H. Pring.

## Golden State Collection

COLLECTION NO. 19

A fine group of both tropical and hardy lilies. They will give you a long season of bloom and every one of them is a gem. Shipped in May. Price, Express Collect, **\$11.00; Post Paid, \$12.50.**

- Blue Triumph.
- Paul Harlot.
- Conqueror.
- Gloriosa.
- Panama Pacific.



# Collections—Plants to Complete the Pool

## Collection of Water Plants for Small Pool

### COLLECTION NO. 20

3 Water Poppy, 2 Water Hyacinth, 1 Water Taro, 1 Primrose Willow, 3 Umbrella Palm, 1 Yellow Flag, 1 Giant Arrowhead, 3 bunches Fish Plants. **Post Paid, \$2.50.**

## Shallow Water Collection

### COLLECTION NO. 21

Water Poppy, Yellow Flag, Umbrella Palm, Giant Arrowhead, Porcupine Grass. Five fine plants. **Post Paid, \$1.00.**

## Bog Plant Collection

### COLLECTION NO. 22

Water Taro, Water Iris, Umbrella Palm, Giant Arrowhead, Porcupine Grass. **Post Paid, \$1.25.**

### COLLECTION NO. 23

For 50 cents additional we will include in any order 1 bunch of Fish Plants, 1 Water Poppy, and a pair of Water Snails as scavengers.

## Scavenger Collection

### COLLECTION NO. 30

Four pairs of assorted Water Snails. Sufficient for the average pool. **Post Paid \$1.**

## Aquatic Collection for Medium Pool

### COLLECTION NO. 24

3 Giant Arrowhead, 3 Water Taro, 3 Water Poppy, 3 Water Hyacinth, 3 Primrose Willow, 3 Umbrella Palm, 3 Porcupine Grass, 6 bunches oxygenating plants, 2 Yellow Flag. **Post Paid, \$5.00.**

## 12 Marginal Plants

### COLLECTION NO. 25

2 Torch Lilies, 2 Hardy Fountain Grass, 2 Palm Grass, 2 Rudbeckia, 2 Umbrella Palm, 2 False Dragon Head. **Post Paid, \$2.50.**

## Fish Plant Collection

### COLLECTION NO. 26

Seven assorted varieties of fish plants suitable for both outdoor pools and fish bowls. The best varieties in season. **Post Paid, \$1.00.**

### COLLECTION NO. 27

For \$1.00 additional we will include with any order 1 Water Poppy, 1 Water Hyacinth, 1 Umbrella Palm, 1 bunch Fish Plants and a pair of Water Snails. A very useful and convenient collection.

## Photographs

We are always pleased to receive photographs of your pool and for those we can use we will be very glad to give a pink or red water lily.

# Ornamental Grasses

The graceful, feathery grasses are seen at their best when planted at the margin of the pool. They blend beautifully and naturally with the water plants, and when planted in irregular groups link the pool with the rest of the garden. They thrive with ordinary garden treatment, forming increasing clumps according to the variety.

**Palm Grass.** (*Panicum palmifolium*.) A graceful, palm-like grass, forming splendid clumps in a single summer. The deep green leaves are broad and pleated, arching gracefully. The flower panicles are tall, rising above the foliage. The plant is from 2 to 6 feet in height. One of the most ornamental of the grasses. **25 cents.**

**Ribbon Grass.** (*Phalaris arundinacea variegata*.) Forms pretty, loose clumps, 2 to 3 feet tall. The leaves are striped green and white. A hardy, free-growing plant. **25 cents.**

**Striped Oatgrass.** (*Arrhenatherum bulbosum variegatum*.) A very dwarf grass,

forming pleasing clumps, useful for edgings to border and beds. The stems are swollen into small tubers near the base. **25 cents.**

**Giant Reed.** (*Arundo variegata*.) A tall, graceful reed with leaves striped green and white. Grows naturally along streams. **50 cents.**

**Hardy Fountain Grass.** (*Pennisetum japonicum*.) A very pretty grass forming graceful clumps 3 feet high. The feathery flower spikes are tinged with red. **25 cents.**

**Fountain Grass.** (*Pennisetum longistylum*.) Tall clumps of graceful habit. **25 cents.**





# Plants to Complete the Pool

The pleasing natural effect of the wild pool so enchanting to the eye is to be attained by the use of the plants listed in the following pages. Here are grouped such plants as are readily established in the pool and whose combined effect will give that lush, boggy appearance of luxuriant wildness so easy of fulfillment in the water garden. They are most varied and interesting, are all easily grown and may be planted here and there among the lilies. Some bear pretty flowers, as the water poppy and arrowheads, while others have striking foliage. Most of them do best in shallow water so the pots in which they are grown should be raised to within 2 to 6 inches of the surface, or they may be grown on a ledge as illustrated under pool construction.

## Marginal Plants

Useful plants to use about the pool margin. Where the soil is dry, as about a concrete pool, watering and a mulch of cow manure will give the plants a tropical luxuriance. They are the frame about the picture.

**Rudbeckia nitida Herbstsonne.** A good hardy flowering plant for background. Large branching heads of yellow flowers, lasting a long time. **25 cents each.**

**Day Lilies.** (Hemerocallis.) These are particularly valuable, growing as well in California as they do in New England. They form graceful, grass-like clumps, improving yearly and bearing large, bell-shaped yellow and orange fragrant flowers. They are of the easiest possible culture, thriving anywhere and luxuriating at the pool side. The following are among the best varieties:

**H. flava.** The Lemon Lily. Sweetly fragrant, lemon yellow flowers on tall stems. Excellent for cutting. **25 cents each.**

**H. Kwanso.** Very large double flowers, tawny orange red in color. The plant is vigorous and free blooming. **25 cents each.**

**Jointweed.** (Polygonum affine.) A very pretty, hardy plant from the Himalayas, where it grows on the moist banks of streams. It thrives under garden conditions, producing its spikes of bright rose red flowers in the autumn. The lax stems are from 1 to 3 feet tall, arising from a tuft. The papery flowers last a long time when cut. **40 cents each.**

**Torch Lily.** (Tritoma hybrida.) Tall spikes of brilliant orange, yellow and red flowers during the summer. These beautiful, hardy African lakeside plants belong to the lily family, forming grassy clumps surmounted by the flaming spikes of flowers. Of the easiest possible culture, thriving in any soil. One of the most beautiful and useful of marginal plants. **25 cents each. \$2.50 per dozen.**

**False Dragon Head.** (Physostegia virginiana.) Hardy herbaceous perennial bearing spikes of pink hooded flowers. Thrives in damp soil or in the border. **25 cents each.**

**Forget-Me-Not.** (Myosotis palustris.) The charming blue-flowered perennial so much admired. Thrives in moist locations. **35 cents each.**

**Plume Poppy.** (Bocconia cordata.) Large silvery green leaves and tall spikes of flowers in late summer. A most attractive plant. **25 cents each.**

**Yellow Flag.** This fine yellow Iris has very graceful foliage and is perfectly at home in the moist soil about the pool, or in the water. It makes a very good plant for the margin. **25 cents each.**

**Umbrella Palm.** Extensively used in the water garden as it has a very tropical appearance and thrives both in shallow water and in the border. **25 cents each.**

## Shallow Water Plants

These plants thrive in water 2 to 12 inches deep and naturally grow about the margin of lakes and streams. Most of them have very pretty flowers. They should be well represented in every pool.

**Water Poppy.** An old favorite whose cheerful yellow flowers look for all the world like California Poppies. Each plant throws out floating runners bearing many blossoms all summer long. Plant as you would a water lily. One of the most useful plants in the water garden. **15c; 4 for 50c.**

**Water Hawthorne.** (Aponogeton distachyus grandiflorum.) Snow-white flowers with the fragrance of English Hawthorne. They are most interesting, the spike being forked and each floret speckled with tiny black anthers. The leaves are oblong, bright green, and float on the surface. In warm regions they flower all winter long. They enjoy deep water and thrive planted along with the water lilies. Certainly one of the prettiest of the group. **75c.**

**Giant Arrowhead.** A typically boggy looking plant with arrow-shaped leaves and tall spikes of large white flowers, each petal with a heavy maroon blotch at the base. Well grown specimens may reach 5 feet in height. Certainly one of the most popular plants in the water garden. Shallow or deep water. **35c; 3 for \$1.**

**Japanese Arrowhead.** Spikes of butterfly-like white blossoms and arrow-shaped leaves. A lush, thrifty grower, thriving in shallow water. **25c each; 5 for \$1.**

**Double Japanese Arrowhead.** Snow white pompons in long spikes among arrow-shaped leaves. Flowers are particularly dainty and the plant is very free in bloom. A gem. **50c.**

**Pickereel Plant.** A familiar marsh plant bearing spikes of pleasing blue flowers throughout the summer. The heart-shaped leaves are 1 to 3 feet tall. Grows luxuriantly in shallow water, blooming profusely. **25c.**

**Azure Pickereel Plant.** An entirely new introduction recently procured by us. This attractive novelty comes from the Argentine and grows from 2 to 6 feet tall, each leaf bearing a spike of sky-blue flowers near the top, the buds covered with silvery wool. A very fine plant, evergreen in mild climates. **75c.**

**Parrot Feather.** (Myriophyllum proserpina-coides.) The feathery green stems trail over the water or foam in soft, airy masses from fountain basins. **15c per bunch.**

**Water Canna.** (Thalia dealbata.) A very pretty and useful plant as a center piece or to fill in corners. Very hardy and easy to grow, thriving in water not more than a foot deep. Canna-like foliage and tall, gracefully arching spikes of purple flowers. **50c.**



**Egyptian Paper Plant.** (*Cyperus Papyrus*.) A very beautiful water plant with plummy heads of foliage, making a good centerpiece or for the pool margin. Plant in very shallow water or on the bank. **50c.**

**Floating Heart.** Bright yellow flowers and handsome scalloped leaves marbled with maroon. A very rapid grower. **25c.**



**Water Poppy**

**Azure Hyacinth.** One of the most satisfactory of the smaller water plants. The flowers are a rich blue with a yellow eye. The spikes are freely borne all summer long, the plants creeping about among the lily pads. Plant in the mud with the lilies and the shoots will soon appear on the surface. **50c.**

**Lance Leaf.** (*Sagittaria lancifolia*.) A hardy and beautiful plant, thriving in shallow water. The tall graceful spikes have many butterfly-like white flowers. The leaves grow from 2 to 4 feet tall with lance-like blade. **50c.**

**Porcupine Grass.** (*Scirpus lacustris zebrina*.) A good plant for corners or about the fountain. Tall quill-like stems with alternate bands of white and green. Very easily grown. **25c** each; 5 for **\$1.**

**Graceful Arrowhead.** (*Sagittaria gracilis*.) A novelty from England with wand-like spikes of dainty flowers and most graceful leaves with long drooping tails. A very charming plant. **75c.**

**Sagittaria macrophylla.** Another novelty with large and pleasing foliage and stout spikes of snow-white flowers. **75c.**

**Primrose Willow.** (*Jussiaea salicifolia*.) A most charming shrubby plant growing 3 to 4 feet high and bearing hundreds of yellow poppy-like flowers 1½ inches across. Perfectly at home in 2 to 6 inches of water. **35c**; 3 for **\$1.**

**Telanthera philoxeroides.** Long trailing stems with heads of pink flowers freely produced from the axils of the leaves. Foliage in varying shades of red and green. **25c**; 5 for **\$1.**

## Floating Plants

Many of these are ubiquitous plants in the slow-moving rivers of the tropics where they form great floating islands. They will all thrive in either sun or shade.

**Water Hyacinth.** (*Eichornia crassipes*.) The delicate spikes of lavender flowers are as beautiful as an orchid. The plant floats on the water but likes the roots in a cool place, particularly among the lily pads. A good plant for shady locations, blooming well when crowded. Universally used in fish bowls and pools. **15 cents**; 4 for **50 cents**.

**Floating Fern.** (*Azolla*.) Bronzy red or emerald green clumps of tiny floating fronds. **25 cents per portion.**

**Duckweed.** (*Lemna minor*.) Tiny frond-like plants; the smallest of all flowering plants. Fish enjoy them. **25 cents per portion.**

## Marsh and Bog Plants

Plants thriving in very shallow water or damp soil. Among them are some of our best flowering plants. Many of the shallow water plants will thrive here also.

**Umbrella Palm.** (*Cyperus alternifolius*.) Slender stems, each bearing a feathery crown of leaves. An old familiar plant much used for shallow water or thriving in moist soil. Young plants may be grown by planting the crown of leaves, bending them down so they float in the water. **25 cents**; 5 for **\$1.00.**

**Cyperus gracilis.** One of the prettiest of aquatic plants growing from 12 to 18 inches high and with dark green crowned stems. A good clean plant you will need in your pool. **25 cents**; 5 for **\$1.00.**



**Water Hawthorne**

**Calla Lily.** An old garden favorite that is perfectly at home in the pool. The flowers are large, trumpet shaped, white with a golden spadix. The foliage gives a most luxurious tropical effect throughout the summer. Plant so that only the roots are in the water or in moist soil at the pool side. **50 cents.**





**Golden Calla.** (*Zantedeschia elliotiana*.) Lustrous golden yellow flowers, 3 to 5 inches across. Handsome leaves, spotted with white. Plant in a rich light loam and keep well watered. **50 cents.**

**ELEPHANT EAR OR WATER TARO**

There are several varieties of these, of which we offer the best below. The large and handsome leaves are very attractive, giving a tropical setting to the pool. Thrive in shallow water or in moist soil. Use as a centerpiece or at the corners.

**Elephant Ear.** (*Colocasia esculentum*.) When well grown the leaves are immense and of a lustrous, emerald green. Strong sprouted tubers. **35 cents.**

**Illustris.** (*C. antiquorum illustris*.) A striking plant, the large, green leaves being heavily spotted with velvety black. **75 cents.**

**Yautia.** (*Xanthosoma sagittifolium*.) Large leaves of a beautiful pale green. Fine plant for a centerpiece. **50 cents.**

**Xanthosoma marshalli.** A popular, very quick growing variety with dark stems. A good all-around plant. **50 cents.**

**Blue Spoonflower.** (*Xanthosoma violaceum*.) A grand species of large size, with deep bluish-green foliage and purple stems. **75 cents.**

**Crinum americanum.** An easily grown and beautiful bulbous plant related to *Amaryllis*. The large, white, lily-like blossoms are borne in spikes of 6 to 8. Grows in any kind of soil, preferring wet situations, thriving in the pool if only the roots reach the water. **50 cents.**

**Water Buttercup.** (*Ranunculus repens*.) An extremely useful aquatic for covering stonework, fountain pedestals, for growing along the margin or for covering shady spots. Creeping by runners or trailing in the water, it rapidly covers bare spots. Bears countless shiny, varnished, double, golden yellow blossoms throughout the summer months. A real acquisition. **25 cents.**

**Water Cress.** Thrives in sun or shade. Does well in shallow water. **15 cents.**

**Cattail.** (*Typha latifolia*.) Universally admired as one of the prettiest native swamp plants. **25 cents.**

**Spider Lily.** (*Hymenocallis caribaea*.) A beautiful bulbous plant thriving in the pool where the roots reach the water. Of the easiest culture, producing a succession of bloom all summer long. The lacy, fragrant, pure white flowers are borne in large clusters. A noteworthy plant. **50 cents.**

**Purple Loosestrife.** Tall spikes of purple flowers. A graceful poolside plant, giving a touch of the wild garden. Moist soil or shallow water. **35 cents.**

**Cardinal Flower.** Graceful spikes of cardinal red flowers 2 feet high. Thrives in moist soil or shallow water. **35 cents.**

**Blue Lobelia.** Tall spikes of blue flowers. A fine plant for moist soil or shallow water. **35 cents.**

**Water Iris**

Water Iris are among the most beautiful of garden flowers and should certainly be in every pool. They are extremely easy to grow, thriving in shallow water or in boxes raised to the surface.

**Yellow Flag.** (*I. pseudacorus*.) Certainly one of the most useful plants for the pool with fine graceful foliage and spikes of yellow flowers. Thrives in water up to 12 inches deep and also in the moist soil of the border. **25 cents.**

**Giant Flag.** Similar to the above but a much larger plant, reaching a height of 6 feet. A fine plant for the centerpiece or corners of your pool. **35 cents; 3 for \$1.00.**

**Purple Flag.** (*I. hex. purpurea*.) Graceful spikes of large purple flowers surmounting the grassy leaves. **25 cents.**

**Dorothea K. Williamson.** We think this one of the prettiest of water plants with its graceful spikes of glowing royal purple flowers and pretty grassy leaves. **50 cents.**

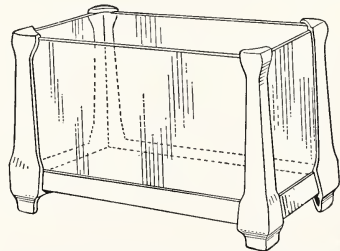
**Blue Flag.** (*I. hexagona*.) Beautiful large porcelain blue flowers. One of the most charming of Iris and perfectly at home in the pool. **50 cents.**

**Iris versicolor.** A beautiful native Iris with many blue flowers and bright green, curved leaves. **25 cents.**

**Siberian Iris.** During the flowering period this is one of the most striking plants in the garden. Masses of brilliant blue flowers. Plant in 1 to 2 inches of water or in the border. **25 cents.**

**Attractive Aquaria**

The interest and beauty of aquaria give them the popularity they have long enjoyed. Every member of the family enjoys caring for them and an aquarium with an assortment of suitable water plants and a few bright and graceful fish is an attractive ornament in almost any room in the house. They actually require but little attention, and a light feeding two or three times a week is ample. On page 25 we list proper foods and plants, while on page 32 a complete list of fancy goldfish is given.



Our line of cast aluminum aquaria is one of the most beautiful in this country. The workmanship and materials are such as to be perfectly appropriate in any home. Much attention has been given to design, and the proportion and balance are the careful work of competent artists.

All parts are highly polished and are of cast aluminum with an ample allowance for strength. The bottoms are of plate glass. The frame is bolted together beneath with brass bolts, allowing the removal of any parts. Nothing has been spared to make these aquaria fitting ornaments for the most tastefully arranged rooms.

- No. 1—10 x5½x7 —1½ gal.... \$ 5.00
- No. 2—12½x7½x8 —3 gal.... 7.50
- No. 3—15½x10 x9½—6 gal.... 10.00

Set of three, Nos. 1, 2 and 3.....\$20.00

Polished aluminum frame—heavy semi-plate glass sides and bottom.

- No. 4—20½x11½x12—12 gal.... \$15.00
- No. 5—25½x11½x12—15 gal.... 20.00

Polished aluminum frame—full heavy plate glass sides and bottom—polished edges.



# Gold Fish

The striking beauty of the graceful goldfish has long made it a popular pet. For two thousand years fanciers in China and Japan have carefully bred them, and today we have a great variety of kinds, some admired for their beautiful flowing tails and fine coloring, others for their bizarre appearance. In California hundreds of thousands of the finer breeds are raised annually for markets throughout the United States. Our mild climate permits the easy handling of goldfish at all times in outdoor tanks, which insures a stinger, more vigorous fish.



The fine breeds of goldfish make splendid household pets, for they require but little attention and add color and life to the room they grace. Several varieties may be kept together, as they are peacefully inclined, and an aquarium with Chinese Moors, Lionheads, Shubunkins and others is an exceptionally beautiful ornament.

Goldfish are a hardy fish and are almost a necessity for the water garden, keeping down mosquitoes, adding life and grace to the pool and when regularly fed becoming great pets. In cold regions they may be left out all winter along with the water lilies, or be brought in the house for the winter aquarium.

**Shipping.** In all cases it is our aim to select pairs, but owing to the difficulty of accurately determining the sex we can not guarantee this. All fish are shipped in cans for which a charge of 50 cents is made. Cans are not returnable. We do not pay express on any shipments of fish.

**Terms and Conditions.** All fish are in first-class condition and properly packed when shipment is made. We do not assume any responsibility for loss, damage or delay in transit nor for results after delivery. Orders must be accompanied by funds sufficient to cover entire cost of stock plus 50 cents for the shipping can. Quantity orders must be accompanied by a \$10 deposit for the large shipping can required. This must be returned at once prepaid, the return charge being but 20 cents. All deposits are returned at once on receipt of can.

**Fountain Fish.** Fine large goldfish for the pool that are always in evidence. Regular feeding will quickly make them pets. 2 years old \$2.50 per pair; \$12 per dozen; 3 and 4 years old \$5 to \$7.50 per pair.

**Japanese Fantails.** Beautiful fish with broad tails and bright coloring. Gold or marked black and white. A hardy, choice and inexpensive fish. Year old \$1 per pair; \$5 per dozen. Choice specimens 2, 3 and 4 years old \$2, \$5 and \$10 per pair.

**Comet Tails.** Graceful, lithe bodies with long flowing tails. A very handsome strain quick in their movements and adding vivacity to the pool. These were developed by American breeders. Bright red gold in color. Year old \$1 per pair; \$5 per dozen. 2, 3 and 4 years \$2, \$5 and \$7.50.

**Shubunkin or Calico Fish.** A beautifully mottled fish with a pattern of blue, gold, red and black. Ours are particularly bright and you will be very pleased with their handsome coloring. This is one of the most popular fish we have. Year old \$1; \$5 per dozen. 2, 3, and 4 years \$2, \$4 and \$6 per pair.

**Chinese Veiltail Moors.** A splendid jet black fish with telescope eyes and fine veil tail. 2, 3 and 4 years old \$5, \$7.50 and \$10 per pair.

**Calico Telescope.** A handsome fish marked in color as are the Shubunkins and with broad, drooping fantail and protruding telescope eyes. A unique and very attractive fish. 2, 3 and 4 years old \$5, \$7.50 and \$10 per pair.

Small specimens \$10 per dozen.

**Calico Fantails.** Fine broad tails with the color of Shubunkins. \$2.50 per pair.

**Lionhead.** The Lionhead is one of the most bizarre creatures developed by the ingenuity of man. The name describes the peculiar hooded growth about the head, it also being called Buffalohead. It is one of the rarest and most interesting of aquarium or pool fishes. 2 years old \$10 per pair, 3 and 4 years \$15 and \$20 per pair.

**Oranda.** The Oranda has the hood of the Lionhead and the flowing tail and fins of the Fringetail. A very graceful and handsome fish. It is very rare and we are fortunate in being able to offer it. 2, 3 and 4 year fish, \$5, \$10 and \$15 per pair.

**Chinese Celestial Telescopes.** The rarest of all goldfish. The eyes unlike the Telescope are directed upward. It has a broad flowing tail, no dorsal fin and swims with a slow, waving motion. \$25 to \$50 each.

## Gold Fish Collections

### COLLECTION NO. 33

A splendid representative collection of fishes for the average pool. All are fine, hardy fish whose beauty you will enjoy. A pair of each of the following with shipping can included. We do not pay express charges on fish.

Fantails  
Comet Tails  
Shubunkin  
Telescope Moors  
Calico Telescopes  
Calico Fantails

12 fancy goldfish for **\$10**

### COLLECTION NO. 34

For those who want the best in goldfish we offer the following collection of choice specimens. A pair each in 2-year-old specimens, shipping can included. Express not prepaid.

Chinese Veiltail Moors  
Lionheads  
Oranda  
Calico Telescope  
\$25.00 value at the collection price of **\$18**

### COLLECTION NO. 35

For those who wish a quantity of smaller specimens we offer the following de luxe miniature collection:

50 assorted goldfish in the following varieties: Telescopes, Shubunkin, Japanese Fantails, Comets, Fountain Fish.

Shipping can included. **\$15**  
Express collect.