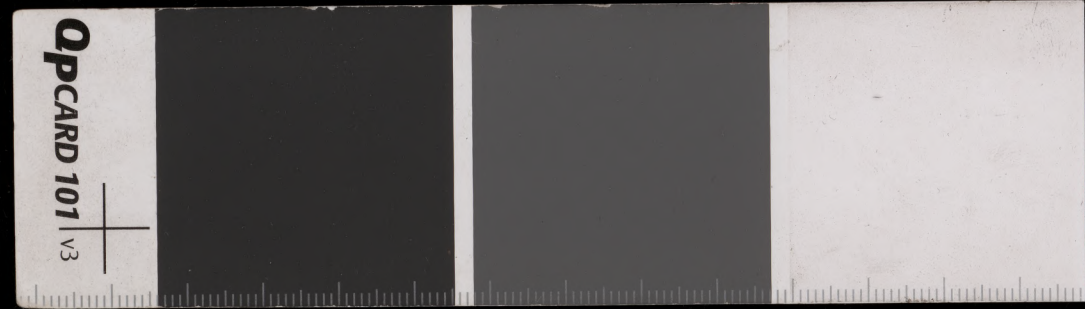


Handwritten Burmese script on a piece of aged, textured paper. The text is arranged in two lines and appears to be a historical record or document. The paper shows signs of wear, including two distinct holes and some staining.







112/1329  
[Faint, mostly illegible handwritten text on aged paper with a large blacked-out section at the top left and a small hole in the center.]

Handwritten text in a cursive script, likely a historical document or manuscript. The text is written on aged, yellowed paper with several holes and a large tear. The script is dense and fills most of the page.



Handwritten text on a long, narrow, aged paper strip, possibly a manuscript or document fragment. The text is written in a cursive script and is mostly illegible due to fading and damage. The strip has two distinct holes punched through it, one near the center and one towards the right end. The paper is heavily stained and discolored, particularly at the edges.

Handwritten text in a cursive script, likely a historical document or manuscript, written on aged, yellowed paper. The text is arranged in approximately five horizontal lines across the length of the strip. The script is dense and difficult to decipher due to its cursive nature and the fading of the ink. There are two distinct dark spots, possibly holes or ink blotches, located in the middle section of the strip. The paper shows signs of wear, including discoloration and some staining, particularly on the right side.



Handwritten text in a cursive script on a long, narrow strip of aged paper. The text is arranged in approximately four horizontal lines. The paper shows signs of wear, including two distinct circular holes and some staining, particularly at the ends. The script is dense and appears to be a form of historical or regional writing.

Handwritten text in a cursive script on a long, narrow strip of aged paper. The text is arranged in approximately five horizontal lines. The paper shows signs of wear, including two distinct circular holes and some staining. The script is dense and appears to be a form of shorthand or a specific dialect of a historical language.





Handwritten text in a cursive script, likely a historical document or manuscript. The text is written in a dark ink on aged, yellowish paper. It begins with a double vertical line on the left side, possibly indicating a section header or a specific type of entry. The script is dense and fills most of the width of the strip.

Continuation of the handwritten text. The script remains consistent with the first line. There are two distinct dark spots, possibly ink blots or holes, located roughly in the middle of this section. The text continues to flow across the width of the strip.

The final section of the handwritten text on this strip. The script is still legible but shows signs of fading and wear, particularly towards the right edge. The text concludes with a double vertical line on the right side, mirroring the beginning of the strip. The overall appearance is that of an ancient or historical record.



Handwritten text in a cursive script, likely a form of Indic script, on a long, narrow, aged paper strip. The text is arranged in several lines and includes some legible words such as 'သောတော', 'သောတော', 'သောတော', and 'သောတော'. There are two distinct circular holes punched through the strip, one near the center and one towards the right end. The paper is heavily stained and discolored, particularly around the edges and between the lines of text.

Handwritten text in a cursive script, likely a historical document or manuscript. The text is written on a long, narrow strip of aged, yellowish paper with two small holes. The script is dense and fills most of the strip. The paper shows signs of wear, including discoloration and small dark spots.



Handwritten text in Devanagari script on a palm leaf manuscript. The text is arranged in approximately 12 horizontal lines. The leaf is aged and shows signs of wear, including two distinct circular holes. The script is finely inscribed and appears to be a form of classical or historical Indian text.

Handwritten text in a cursive script on a palm leaf manuscript strip. The text is arranged in approximately five horizontal lines. Two circular holes are visible, used for binding multiple leaves together. The script is dense and characteristic of traditional Southeast Asian writing systems.





Handwritten text in a cursive script on a long, narrow strip of aged paper. The text is arranged in approximately four horizontal lines. The paper shows signs of wear, including three distinct holes and some dark spots. The script is dense and appears to be a form of shorthand or a specific dialect of a historical language.





Handwritten text in a cursive script on a long, narrow strip of aged paper. The text is arranged in approximately four horizontal lines. The paper shows signs of wear, including two distinct circular holes and some staining. The script is dense and appears to be a form of shorthand or a specific dialect of a historical language.





Handwritten text in a cursive script, likely a historical document or manuscript, written on aged, yellowed paper. The text is arranged in approximately 10 horizontal lines. The script is dense and difficult to decipher due to its cursive nature and the fading of the ink. There are two distinct holes or indentations on the paper, one near the left edge and one near the right edge, suggesting the document was once part of a bound volume or a chain of papers. The paper shows signs of significant age, including discoloration and some surface wear.





Handwritten Burmese script on a palm leaf manuscript strip. The text is arranged in four horizontal lines, written from left to right. The script is a traditional form of Burmese, likely used for religious or historical records. The leaf shows signs of age, including some dark spots and a small hole near the center.



11. ၇၇ နှစ်ပြည့်အထိ ပြန်လည်အောင်မြင်စေရန် ကြိုးပမ်းဆောင်ရွက်ပါရန် အမိန့်ပြုပါသည်။

11. ၇၈ နှစ်ပြည့်အထိ ပြန်လည်အောင်မြင်စေရန် ကြိုးပမ်းဆောင်ရွက်ပါရန် အမိန့်ပြုပါသည်။

11. ၇၉ နှစ်ပြည့်အထိ ပြန်လည်အောင်မြင်စေရန် ကြိုးပမ်းဆောင်ရွက်ပါရန် အမိန့်ပြုပါသည်။

11. ၈၀ နှစ်ပြည့်အထိ ပြန်လည်အောင်မြင်စေရန် ကြိုးပမ်းဆောင်ရွက်ပါရန် အမိန့်ပြုပါသည်။

Handwritten Burmese text on the top line of a palm leaf manuscript.

Handwritten Burmese text on the second line of a palm leaf manuscript.

Handwritten Burmese text on the third line of a palm leaf manuscript.

Handwritten Burmese text on the bottom line of a palm leaf manuscript.



Handwritten Burmese script on a palm leaf manuscript strip. The text is arranged in approximately four horizontal lines. The script is a traditional form of Burmese writing, likely used for religious or historical records. The leaf shows signs of age, including discoloration and a small dark hole near the center. The text is densely packed and covers most of the length of the strip.

Handwritten Burmese script on a long, narrow strip of aged paper. The text is densely packed and spans the entire length of the strip. It appears to be a list or a series of entries, possibly related to a historical record or a collection of items.

Handwritten Burmese script, centered on the strip. It consists of two lines of text, which appear to be a specific entry or a short note. The characters are clearly legible and well-spaced.

