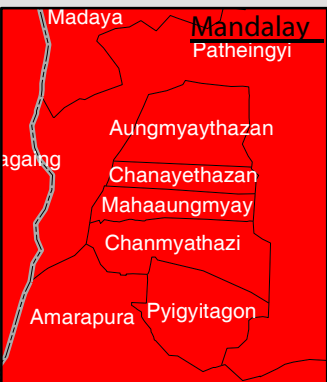


Pyithu Hluttaw Election Results 2015 with historical Comparison

Pyithu Hluttaw (Lower House) constituencies correspond to existing townships (330). Note that this map shows only elected representation per constituency, but not the number of military appointees in the hluttaw.



Legend
 Pyithu Hluttaw Constituency Boundary
 State/Region Boundary

Map ID: MIMU1351v02
 Creation Date: 19 November 2015.A3
 Projection/Datum: Geographic/WGS84
 Data Source: IFES
 Base Map: MIMU
 Boundaries - MIMU/WFP
 Place Name: Ministry of Home Affairs (GAD) translated by MIMU

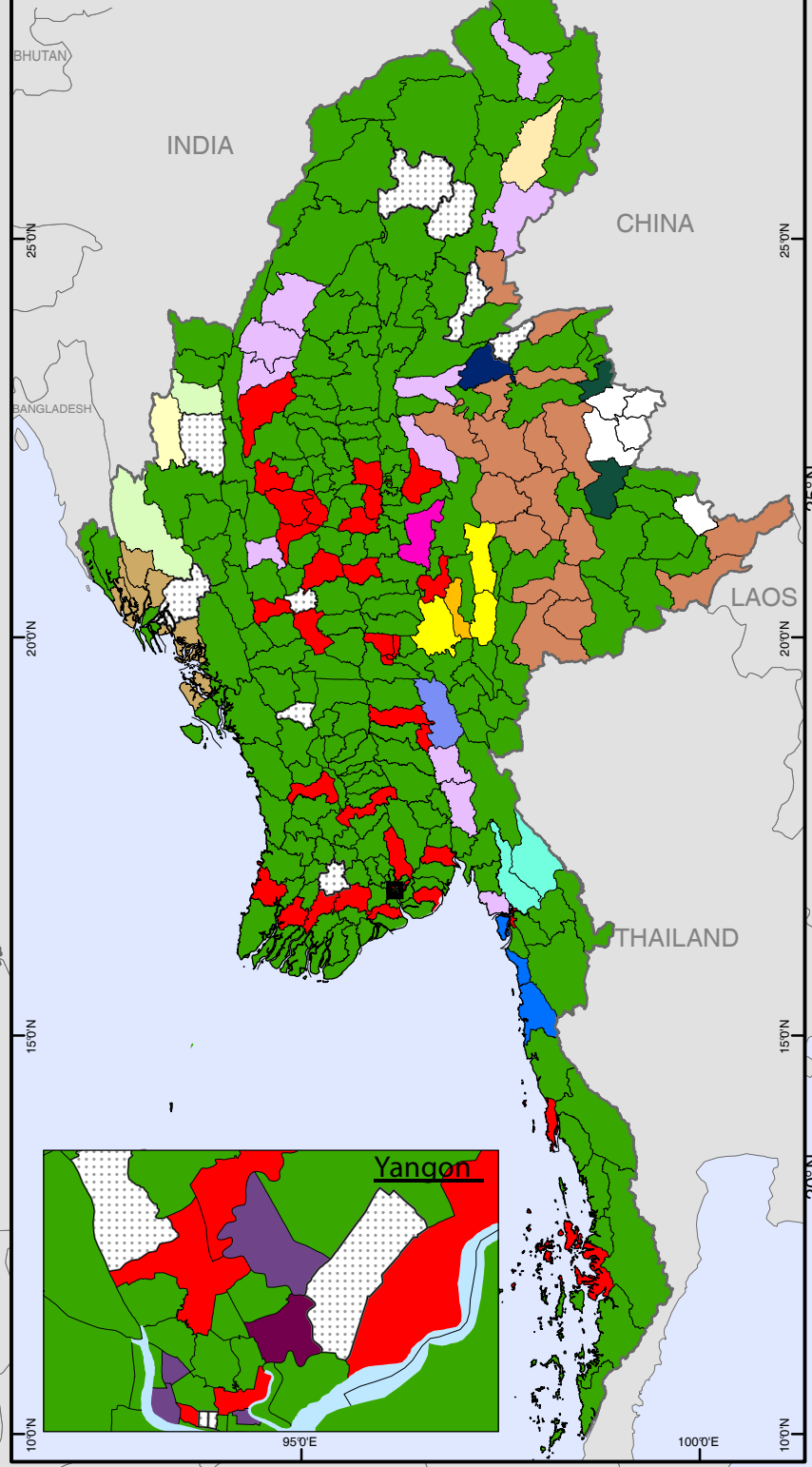
Email: info.mimu@undp.org
 Website: www.themimu.info

Copyright © Myanmar Information Management Unit 2015. MIMU products are not for sale and can be used free of charge with attribution.
 Disclaimer: The names shown and the boundaries used on this map do not imply official endorsement or acceptance by the United Nations. Note that this map may not show all islands of coastal areas due to scale limitations.

100°E



Hluttaw Composition prior to 2015 Elections, based on 2010 and 2012 Election Results



Colour	Party Name	2015	before
	All Mon Region Democracy Party		3
	Arakan National Party	12	
	Chin National Party		1
	Chin Progressive Party		2
	Daingnet National Development Party		1
	Independent	1	
	Inn National Development Party		1
	Kachin State Democracy Party	1	
	Kayin People's Party		1
	Kokang Democracy and Unity Party	1	
	Lisu National Development Party	2	
	National Democratic Force		4
	National League for Democracy	225	39
	National Unity Party		11
	New National Democracy Party		1
	Pa-O National Organisation	3	3
	Phlone-Sqaw Democratic Party		2
	Rakhine Nationalities Development Party		7
	Shan Nationalities Democratic Party		17
	Shan Nationalities League for Democracy	12	
	Ta'ang (Palaung) National Party	3	1
	Union Solidarity and Development Party	30	215
	Unity and Democracy Party of Kachin State		1
	Wa Democratic Party	1	2
	Zomi Congress for Democracy	2	
	Vacant		13
	Elections Cancelled	7	5

