

F 279

.C7 S7





C290
544

◊ Souvenir of
Columbia, S. C. ◊



Published and Copyrighted, 1886, by
GEO. V. HENNIES, Photographer,
Columbia, S. C.

— — — — —
THE ALBERTYPE CO., N. Y.



STATE HOUSE.



PALMETTO TREE ERECTED TO S. C. MEXICAN VETERANS.



CONFEDERATE MONUMENT.



MAIN STREET—LOAN & EXCHANGE BANK BUILDING





POST OFFICE.

CITY OPERA HOUSE.





NEW LUNATIC ASYLUM.





EPISCOPAL CHURCH.





FIRST PRESBYTERIAN CHURCH.



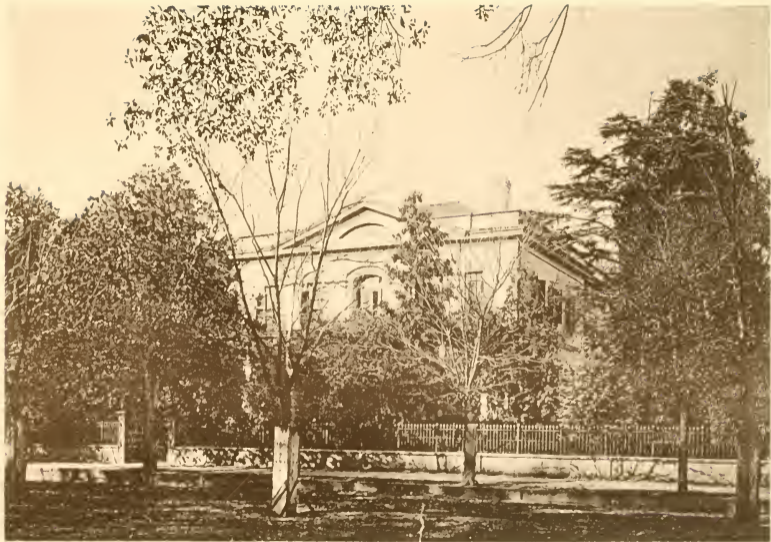
WASHINGTON STREET METHODIST CHURCH.





SOUTH CAROLINA UNIVERSITY





URSULINE CONVENT.





CONGAREE RIVER BRIDGE.





GRAND CENTRAL HOTEL.

COMMERCIAL BANK.

WRIGHT'S HOTEL.

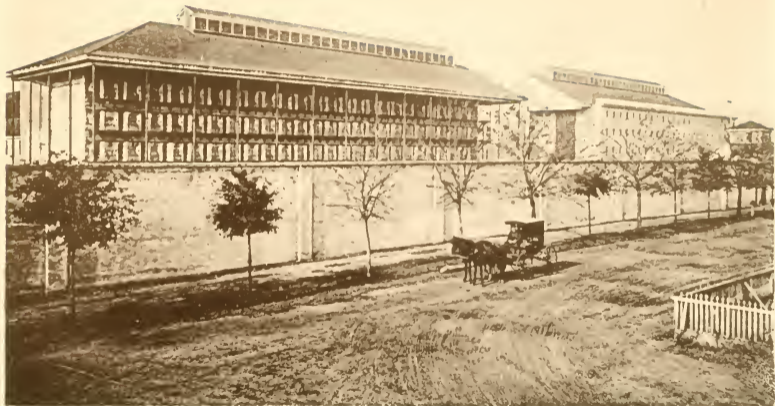




THEOLOGICAL SEMINARY.

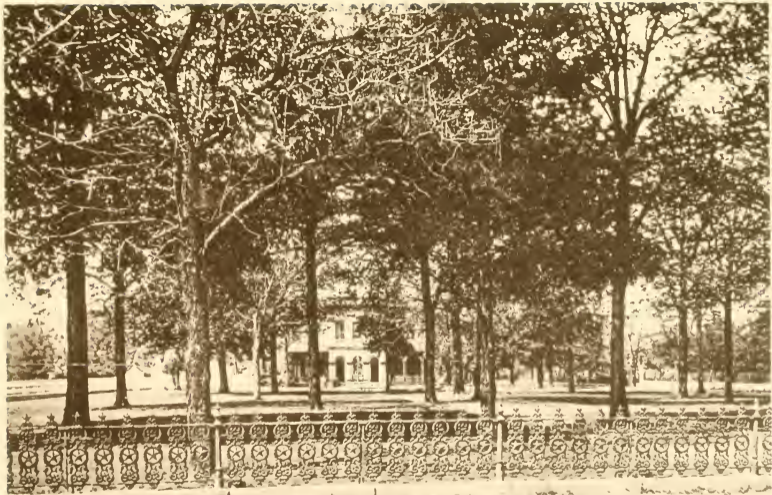
COLUMBIA FEMALE COLLEGE.





S. C. PENITENTIARY.





GOVERNOR'S MANSION





RESIDENCE OF W. A. CLARK, ESQ.

RESIDENCE OF J. S. WILEY, ESQ.

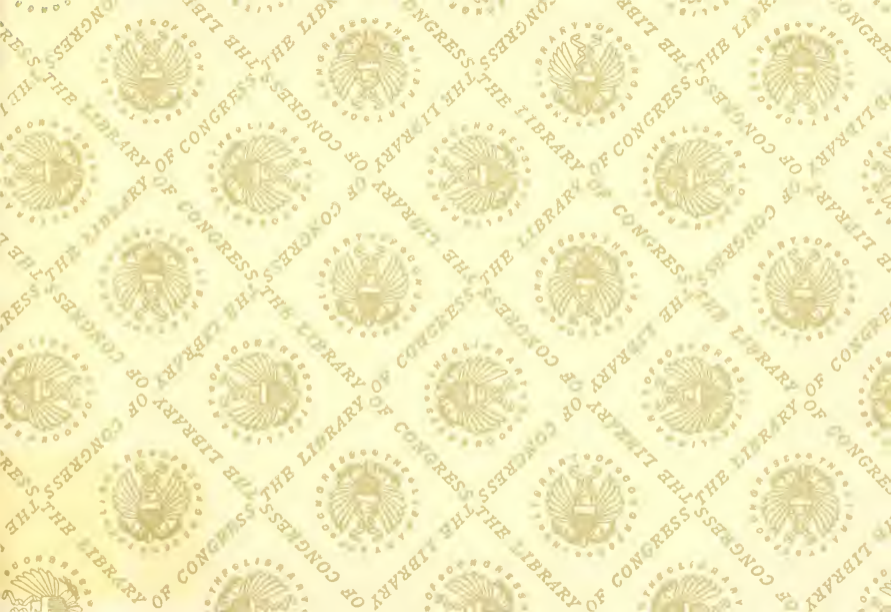
RESIDENCE OF MRS. E. I. MORRIS.

C 219 89 14



HECKMAN
BINDERY INC.
AUG 89
N. MANCHESTER,
INDIANA 46962





LIBRARY OF CONGRESS



0 014 498 125 A

