

## Historic, archived document

Do not assume content reflects current scientific knowledge, policies, or practices.



62.87

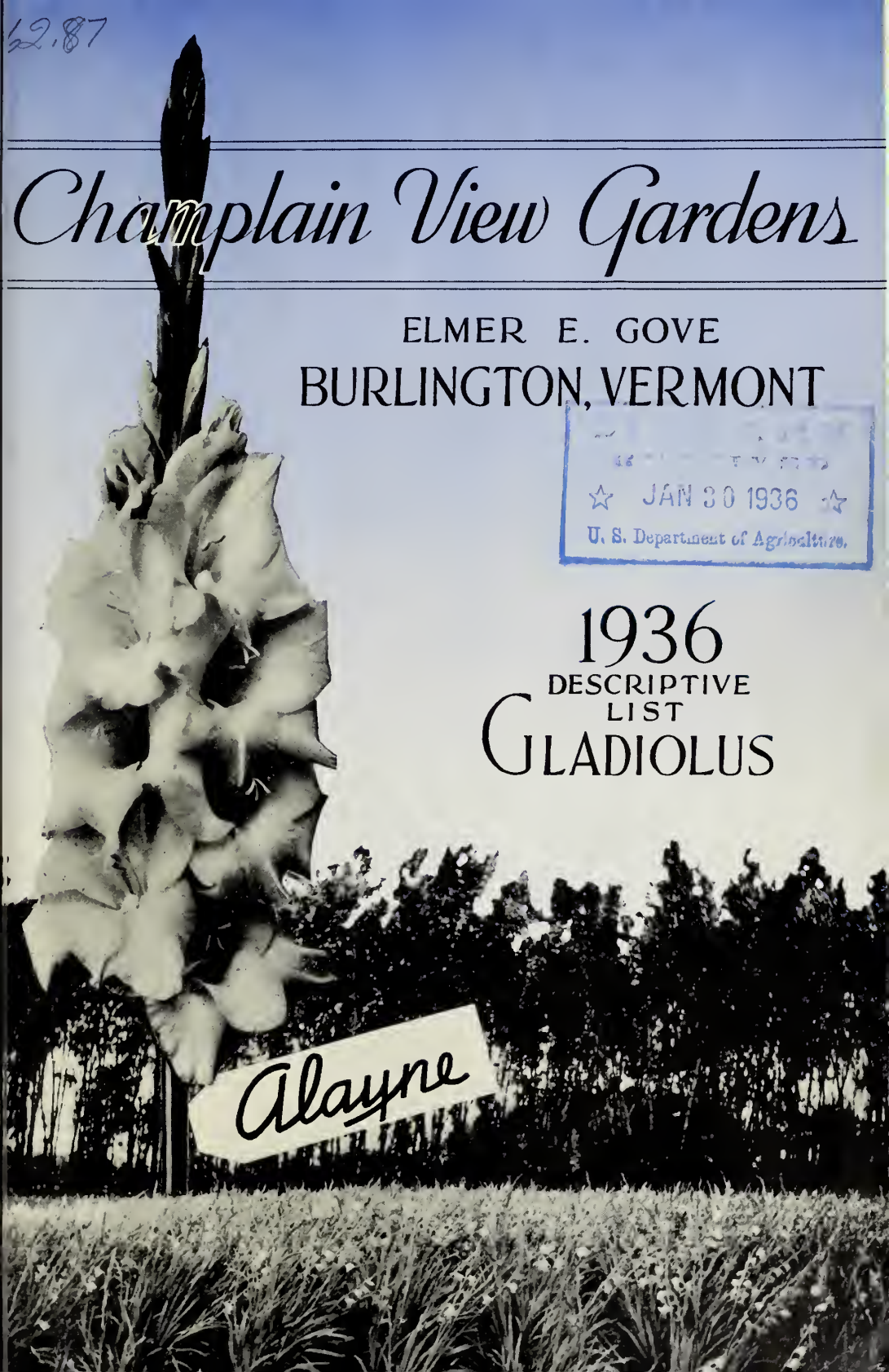
# Champlain View Gardens

ELMER E. GOVE  
BURLINGTON, VERMONT

☆ JAN 30 1936 ☆  
U. S. Department of Agriculture.

1936  
DESCRIPTIVE  
LIST  
GLADIOLUS

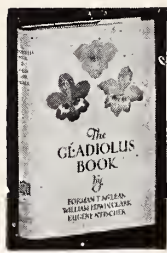
*Alayne*



## BOOKS YOU SHOULD HAVE

### THE GLADIOLUS BOOK

is about the most complete treatise published on the gladiolus. Is written by Forman T. McLean, William Edwin Clark and Eugene H. Fischer; 224 pages finely bound and worthy of a place in any library. Price, \$3 plus 15 cents for postage. If you are a real "glad bug" you want this book.



**All About Flowering Bulbs**, by T. A. Weston. Written especially for the amateur. This book gives all the information a home gardener requires on the culture of flowering bulbs of all seasons planted outdoors as well as those that do well in the house. This is a very fine book and gives a wonderful amount of information on the subject. **Postpaid, \$2.15**

**Modern Dahlia Culture**, by W. H. Waite. Brief, clear, complete. Based on the actual operations and results of a practical experienced grower, propagator and exhibitor written to meet the needs of the novice and to interest and inform the expert. Mr. Waite's little volume is the biggest value for Dahlia lovers

present and to come. 132 pages, 24 half-tone pictures and 6 in color. **Postpaid, \$1.65**

**1001 Garden Questions and Answers**, by Alfred C. Hottes. A wonderfully fine book with a wealth of information covering flower, vegetable and fruit garden. Arranged in the form of questions and answers. This is not to be read for literary effect but to secure a quick answer to any definite question. If there is anything you want to know about the garden, what plants do well in certain places and what do not, construction of walks, garden seats, spraying information, judging scales, etc. be sure to get this book. I don't know of a better book for the amateur. 320 pages, fully illustrated. This is a new edition that has been about 50% revised.

**Postpaid, \$2.15**

**The Book of Perennials**, by Alfred C. Hottes. This book is a veritable storehouse of information about perennials, the flowers which come up year after year and is indexed and cross indexed in such a way that the amateur cannot fail to have a marvelous perennial garden or bed. Over 125 different species are discussed with their culture and requirements. Many pictures.

**Postpaid, \$2.00**

**Gladiolus Breeding**, by J. A. Kemp. A trustworthy guide of 12 pages for the experimenter in the successful breeding of gladiolus. The various operations are described in plain, everyday garden language.

**Postpaid, \$5.55**

### GARDEN GUIDE

**Garden Guide** has wonderful chapters devoted to the Vegetable, Flower and Fruit Gardens, with practical layouts and planting plans.

Covers every step from spading the ground to preserving the harvest.

338 pages and over 275 teaching illustrations, with beautiful cover in four colors. Price, Cloth, \$2.50.

### WAYSIDE MARKETING

The author of "Wayside Marketing," Schuyler Arnold, after several years of observation and much study on the subject, has written a book that is packed with worthwhile suggestions enabling the wayside stand owner to better marshal his opportunities, abilities and equipment.

Every angle of the situation is covered—location the building of the stand, with details of measurement, the stock to be offered (flowers, fruits and vegetables) and how to grow it, etc.

132 pages, bound in cloth and encased in an attractive jacket. Price, \$1.50; postpaid, \$1.65.

**How to Arrange Flowers**, by Dorothy Biddle. A very fine book by a real artist. Explains how to arrange your flowers artistically.

**Postpaid, \$1.10**

# GREETING

I want to thank all my customers of last season for about the best season I ever had. The amount of money received last year was not quite equal to the best pre-depression year but the number of orders was much greater and I could have filled a great many more orders if I had had the stock. Had to return thousands of dollars worth of checks.

The outlook this year is the best in several years. Business in general is improving, there is no doubt about it. Whether this is because of or in spite of the New Deal depends upon your political bias. The main thing is that business is better and there is more optimism in the air than for a long time. As business improves people will have more money to spend and that means that the gladiolus business will improve along with other lines. In fact I think it recovers sooner than other businesses. The glad fan is bound to have glads if he has any money at all. The grower who prepares for the inevitable increased business will be wise.

The stock of bulbs throughout the country is larger than last year but the demand will also be much larger and there is bound to be a shortage of some kinds before spring. In some sections I have heard that the drought was pretty bad and there was a shortage of No. 1 bulbs. My own stock is the best and largest I have ever had.

The thrip is still causing some trouble but many people have conquered it and I feel sure that by using the proper methods thoroughly that good glads can be raised. I think that where the thrip has been troublesome that it was due largely to lack of thoroughness either in disinfecting or spraying. To get rid of the thrip entirely a whole neighborhood has to be cleaned up. Get your neighbors to disinfect their bulbs.

Many new varieties are coming out this year as usual, most of which will be a step in advance over older varieties. To have the best you should try as many of these as possible. Some of them at least will be a revelation to you.

Yours for more and better glads.

ELMER GOVE.

## Purposes of Glads

There are a number of different purposes for which glads are grown and different varieties are suited for different purposes. The main uses of glads are:

1. *For the wholesale commercial cut flower market.*

These are grown by the large growers and shipped comparatively long distances. Sometimes several hundred or even thousands of miles. For this purpose there are comparatively very few varieties suited. They have to ship well without bruising, stand rough treatment at the wholesalers, open up well in water and be of suitable colors.

2. *For local or nearby commercial cut flower use.*

These colors have to be similar to the first class but the varieties don't have to be quite so sturdy. Of course they have to open well in water but can be of little softer texture.

3. *Exhibition.*

There are many people who grow glads as a sporting proposition. The same as they gamble in anything. They get a great kick out of growing the very best blooms they can and in winning prizes at the shows. For this purpose you want the exhibition type which means having many blooms open at a time, good size blooms and good placement. Color is not so important in the strictly exhibition type provided there are plenty of blooms open. Now that many glad shows are using the decorative and small decorative classes many other varieties can be grown for exhibition and stand a chance of winning that would not have a show in the exhibition class. In the decorative and small decorative classes color is very important. Number open and size less so.

4. *For the home garden.*

For this purpose any varieties can be grown that you like and really the only way to tell whether you like them or not is to try them out. If possible it is a good plan to visit gladiolus gardens in the summer time and pick out the ones that you like. If you can't do this read the descriptions in the catalog and pick out what you think you would like and try them. No one else can pick them out for you. I tell in my descriptions which I think are the best but many of the varieties that are not really the best are good and are liked by many people.

5. *For the roadside stand.*

Another purpose for which glads can be grown is for sale at roadside stands. Here many varieties can be sold that would not be suitable to ship to market to the florists. Florists are rather prone to stick to the old line varieties and colors while at a roadside stand where the general public comes many varieties will sell even better than the commercial type. Many people buying flowers in a place like this like the odd and bizarre colors which you could not possibly sell to a florist.

## Thoughts While Strolling

I surely appreciate all the fine letters so many of my customers have written in regard to their glads. Sorry that we can't acknowledge them all. It keeps us busy growing a crop for you for the next season.

When will florists wake up to the fact that many of the newer glads are much more beautiful than the old kinds? Also many don't seem to know how to use glads to secure the best effect. The growers should educate them and so make business for themselves.

No one will become a millionaire growing glads but good money can be made if common sense is used in selecting varieties and in selling them.

About fifteen years ago I asked a leading grower of dahlias and glads if the country would not soon be over stocked with glads. He told me No! that the surface had hardly been scratched. I did not believe it then but I do now. The reasons for this are; bulbs deteriorate after a few years and have to be replaced, as yet only a small per cent of people grow glads and new and better varieties are constantly replacing older ones.

There is a vast amount of missionary work to be done yet in creating new glad lovers. My mailing list is one of the largest in the country but it goes to a comparatively infinitesimal part of the families that should be growing glads.

What an immense amount of pleasure millions of people are missing by not growing not only gladiolus but other flowers as well.

In traveling through the country I find practically every home could be improved by the use of flowers. There are millions of very poor people who could

spend from \$1.00 to \$5.00 a year for flowers if they thought they could. They waste much more than that on things much more nonessential.

The American people are not nearly so flower-minded as the people of other countries. I understand that in England many very poor laborers take home a bunch of flowers on Saturday nights.

Many people ask me if glads will grow in their localities. Glads will grow most everywhere that other cultivated plants will grow. I have customers from Southern Africa to Alaska and many in the southern United States and Mexico.

What a thrill when the first bloom of the season opens and how depressing to see the last one going in the fall.

What a marvelous thing is a gladiolus bulb. All bulbs look more or less alike but what a difference in the flowers that come from these bulbs and what a lot of pleasure giving beauty is enclosed in them. I wish I had the gift to rhapsodize on this but my powers of expression are somewhat limited along this line.

The grower and seller of plants is doing more than his share to make the world a more beautiful place to live in.

I have found most of the gladiolus growers a fine lot of people.

Debonair is going strong. Some growers say it will make a better cut flower variety than Picardy.

Watch Duna. This is a comer for florist use. The women especially rave over it.

When Rosex gets down to commercial prices it will be a sensation in the cut flower market.

Many hybridizers compare their seedlings with Picardy. This is a compliment to Picardy but I have seen none that benefited by comparison.

People ask me what varieties I would prefer if I could have only one. I must say that I don't know. I would hate to think of such a thing.

Comparatively few people appreciate beauty. I believe the principles of beauty should be taught in the schools. Growing a collection of Palmer varieties is an education in the beauty of glads.

Do not condemn a variety because it is not a world beater the first year you try it. Some varieties have to become acclimated to the locality before doing their best.

Favorite combinations of glads. King Arthur and Wasaga, Duna and bronzy foliage, Marmora with yellow or white glads, Picardy and pale blue delphinium.

How tall and straight Debonair and Wurtembergia stand in the field. And what a color Wurtembergia has. Mrs. Langford also is always straight. Few varieties have this peculiar straightness like these three.

The most popular varieties usually have very serious faults so don't complain if you get a variety not in the first hundred and find it is not quite ideal. No glad nor anything else is perfect. Ideals are to be striven for and not to be attained.

What a vast field there is for the hybridizer not only in glads but in all kinds of plants. Very few varieties of glads introduced ten years ago are grown now. Ten years from now many of the present day varieties will be discarded for better ones.

People are becoming more beauty conscious all the time. The Palmer strain has helped to educate the public as to what is BEAUTIFUL in contrast to what is just large, odd or bizzare.

When you send flowers for identification be sure to send at least half a spike and send them in the bud but do not pack a lot of wet paper or moss in with them. A little wet paper tied around the stem will do no harm but too much moisture in the package will cause the flowers to come rotted. If they are shipped perfectly dry and in the bud they will usually come through all right.

## A Classic

The following paragraph describing the various stages of gladiolus growing has attracted so much attention and been quoted so many times that I am repeating it again.

"There is a fascination about growing glads that becomes a hobby, then a craze. There are five stages of interest in growing "glads." First you just grow them as an amateur, same as you would any other flower. Then as your interest in them increases you become a "fan," then a "bug," then a "nut," then finally a "fiend." When you reach this final stage you are hopeless. You think of "glads" all day, dream of them at night, spend every available minute of your time in the

garden, talk of them, visit the shows, read all the catalogs and spend all your money on them. You will look lovingly at the last flower in the fall, will handle over your bulbs in the winter time and will hardly be able to wait till you can lovingly plant the bulbs in the spring. From then till the first bloom appears is a period of happy anticipation. When finally the spikes of bloom begin to appear you are in heaven."

## **Culture of Glads**

With every order that goes out we send a four page circular which gives you all the necessary information as to growing glads. If you want to go into it deeper would suggest "The Gladiolus Book" by Clark-McLean-Fischer which we sell for \$3.15 prepaid or "Gladiolus" by Rockwell which sells for \$1.35 prepaid. Or we give this latter book free with a \$12.00 order if you ask for it.

When your bulbs arrive do not leave them in the package for a long time but open them up at once and give the bulbs air. They must have air in storage. If they arrive in very cold weather it is all right to put them in a cool place for a day or two before opening. The idea being that if there is any frost in them that by thawing out slowly they will be all right. However we pack very warm and try to have them reach you in good condition.

Though glads will give a fair account of themselves under most impossible conditions it will pay you to grow them as well as possible. They will be so much better and give you much more pleasure if conditions are right. In very dry weather give them plenty of water.

## **Change of Ground**

It is generally recommended to grow gladiolus on different soil each year. Most of the growers try to do this. But I know it is impossible for many amateurs to change soil as their garden plot is limited and it is necessary for them to grow on the same place every year. This need not prevent anyone from growing good gladiolus. I know of people who have grown glads on the same place for many years and they are still perfectly healthy and free from disease and produce good blooms every year.

If it is necessary to grow in the same place every year I would suggest the following procedure: Plant your bulbs from four to six inches deep and after placing them in the hole or trench cover them with an inch or two of soil then using a water can drench the ground thoroughly over the bulbs with Bichloride of Mercury solution using a somewhat weaker solution than you would use in disinfecting the bulbs. For disinfecting we recommend a 1-1000 solution or one ounce to seven or eight gallons of water. For soaking the ground would recommend about one ounce to twelve or fifteen gallons of water. I know of one grower who some years ago had some disease in his garden but this past season there wasn't a diseased plant on his place and the growth was unusually strong.

After soaking the soil, finish covering.

## **Glads and Florists**

Many people think they do not care for glads because they judge glads as a whole by what they see in florist shops and at roadside stands. Glads in such places are absolutely no criterion of the race of glads that are raised in private gardens or by up to date growers. Florists as a whole are way behind the times in the use of glads. They need a lot of educating. They want only the older varieties they have been using for years. Many of them still use Halley, a variety that has practically nothing to recommend it but earliness. I heard a former F.T.D. president say that Giant Nymph was the only pink glad he wanted for his store. No one questions the fact that Giant Nymph is a good commercial glad but there are many more beautiful ones now and when a florist offers his customers only that one variety in pink he is not only not treating his customers fairly by leading them to think there is only one good pink glad but is also doing glads great harm.

Then often florists do not handle the best grade of glads they can get. Some of the glads offered in the flower stores are a disgrace to the stores and to the growers—often only the old out of date varieties and very poor stock is bought. I have seen glads in New York flower shops offered at \$2.00 a dozen that I am sure did not cost the florist more than \$.10 at the most. Instead of buying the best and selling at a reasonable price they buy the cheapest stock and try to gouge the public. Then they wonder why people don't like glads. I am speaking of



general conditions in New York and Boston. Of course a few florists do try to handle the best stuff and possibly in other cities florists as a rule are more up to date. I certainly hope so. But I think they will nearly all stand some educating along gladiolus lines.

I realize that a real commercial variety that will stand shipping and will be profitable for the florist to buy must have qualities that a lot of fine varieties do not possess. But there are many beautiful varieties that should be used by florists who can buy them from nearby growers that would please their customers much more than the older varieties and would give them a greater variety to select from and so would create more business for themselves. And it would also benefit the gladiolus industry. *There is a big field here for growers who will get into the newer and better kinds and work up a trade with up to date local or nearby florists. Grow up to date varieties as well as possible and demand a premium price over the common run of stock. It can be done.*

## **The Best Varieties For Florist Use By Color. Arranged By Blooming Season, Early To Late.**

Some of these varieties are as yet too high for cut flower use but they will be commercials as soon as the price gets down and the way to make money on them is to get them early so that when the price gets down to commercial levels you will have a stock of them.

WHITE: Escort, Dr. Durr, Albatross, Maid of Orleans, Mary Elizabeth.

LIGHT PINK: Carolus Clusius, Debonair, Mrs. Sisson, Mrs. Langford.

ROSE PINK: Schwaben Girl, Constancy, Sunset Cloud, Littlejohn, Dr. Shook.

SALMON: Al Smith, Early Dawn, Giant Nymph, Coronation, Margaret Fulton, Picardy, Rapture, Betty Nuthall.

LAVENDER: Mary Frey, Dr. Moody, King Arthur, Minuet.

LIGHT BLUE: Champlain.

MEDIUM BLUE: Ave Maria.

DARK BLUE: Aida, Pelegrina, Blue Admiral.

PURPLE: Chas. Dickens, Troubadour.

YELLOW: Miss Bloomington, Spray of Gold, Golden Cup, Loyalty, Tobersun.

ORANGE: Sunshine Susie, Orange Sovereign, La Paloma, Orange Queen, Gay Hussar, Orange Wonder.

BRIGHT RED: Excellence, Dr. Bennett, Wurtembergia.

MEDIUM RED: Amador, Bill Sowden, Commander Koehl.

SMOKY: Marmora, Mother Machree, Bagdad.

PINK WITH DARK BLOTCH: Gladys Clegg, Emma, Pinnacle, Edith Robson.

BLOTCHED LIGHT PINK TINTED WHITE: Mibloom, Yvonne, Bleeding Heart.

BUFF: Duna, Wasaga.

## **Best Varieties for Growers to Make Money On in the Next Few Years**

Of course opinions differ but it is my opinion that the following varieties will be money makers for the growers to make good money on for the next few years. Of course there are plenty of other good varieties also but to me these look like sure-fire commercial varieties.

Alayne, Gladys Clegg, Constancy, Debonair, Duna, Edith Robson, Escort, King Arthur, Maid of Orleans, Margaret Fulton, Mrs. Langford, Pelegrina, Pinnacle, Picardy, Rapture, Wasaga, Wurtembergia.

## **Varieties for Forcing in the Greenhouse**

In general I think most of the early varieties will force well. I know that Picardy, Pelegrina, Miss Bloomington, Mibloom, Champlain, Al Smith, Escort, Excellence, Spray of Gold and Minuet are good forcers. No doubt there are many more.

## **Selecting Varieties**

Some people ask me to pick out the varieties for them. I can do this if you insist but would much rather not. I have tried to make my descriptions as accurate as possible to give you an idea of what the flowers are like and I think you can pick out the varieties to suit you as well as I can. However if you don't know anything about the different varieties and insist upon me picking out some for you, I can do it. Just give me the colors that you prefer, the price range that you want to pay and the sizes and quantities and the amount of money that you want to put into it and I will do my best to select some for you that you will like.

## **Guarantee**

My guarantee is that I do my utmost to make my customers satisfied. If a variety should prove untrue to name I will replace them or if they are not satisfactory on arrival I will replace them or refund the money. However I cannot guarantee the quality of the bulbs that will be harvested. Sometimes due to local conditions bulbs will get diseased during the growing season. I cannot be responsible for that.

And we do not guarantee bulbets to grow. In some varieties bulbets are very hard to germinate and even in the very best kinds they will not germinate 100%. Though buying bulbets is in most cases a cheap way of getting good stock you do have to take your own risk about making them grow. Some people are more successful than others in germinating bulbets and the varieties vary a great deal among themselves in their ease of germination. So when you buy bulbets and they do not grow don't expect me to replace them the following year with bulbs. I have bought many thousands of dollars worth of bulbets that did not grow but that is all in the game. You needn't hesitate to buy bulbets however as in most cases a large percentage of them will grow if given plenty of moisture.

## **Foreign Customers**

Foreign customers aside from Canada will please not send the currency of their countries nor personal checks. Currency has to be sent to New York and sold at a great discount and the checks have to be returned to the bank of their origin to be cashed. This in the case of distant countries means a delay of one or two months or more.

## **Order Early**

If you can spare the money it is much better to order early so to be sure of getting just what you want. Last season we had to return thousands of dollars worth of checks and money orders for items that we were sold out of. Through the winter we have more time to put up your orders and give them the necessary attention. If you don't want them delivered until spring we can pick them out and hold them for you and ship just when you want them.

If the order is not received until late some items are bound to be sold out and then we are so terribly rushed that we sometimes have to work day, night and Sunday and are liable to make mistakes and cannot give each individual order the attention we would like to.

## **Acknowledgment of Orders**

We mean to acknowledge all orders within a day or two but sometimes, especially later in the season, with the orders coming in pretty fast we are delayed three or four days or even longer. If you do not receive an acknowledgement within what you think is the proper time better write us as occasionally a letter goes astray.

## **Discounts and Extras**

On all orders at catalog prices we give discounts as noted in the price list, and also some extras. You will help us very greatly if you will mention the varieties and sizes that you are interested in for extras. We want to give you something

that you will like but unless we know what you have or what you are interested in we might be giving you something that you wouldn't care for. So if you will just mention the kinds for us to select extras from, you will be better satisfied and it will save us a lot of time.

## **Do You Want to Continue to Receive this Catalog?**

We want everyone to have this catalog who is a prospective customer. If you have friends who grow glads we will be glad to send them copies. This is the way we sell bulbs. Practically all the business we do is by means of the catalog.

However there is one thing that perhaps some people don't realize and that is that these catalogs cost money. We figure that when we put your name on our mailing list and keep it there for three years that it costs us at least \$1.00. If we get no orders in that time the \$1.00 is lost. Every year we pull out of our files the names of several thousand people who have been getting our catalog for three years but have never bought anything or have been getting our catalog for a longer period but have not bought in three years. These names have cost us several thousand dollars to put and keep on our mailing list besides that much more to secure them in the first place through advertising. So you see if we do not secure an order from you we are losing money on your name.

Some national advertisers when they receive a request for a catalog send a copy but do not place the name on their mailing list unless an order is received. I do not want to do this. I want to give everyone a chance to get interested in glads. I have been keeping names for three years and formerly did longer than that but I am now considering making it only two years. So if you want to continue to receive my catalog, which I consider is a very good and helpful one, you must occasionally send in an order even if it is only a small one.

### **A Gladiolus Crank**

I am, to be frank,  
A gladiolus crank.  
I've reached the last stages  
And been there for ages;  
    I talk little but glads,  
    And think nothing but glads.

When my glads are abloom,  
Then there scarcely is room  
In my heart for the joy.  
My bliss knows no alloy;  
    I give toasts to my glads,  
    And I boast of my glads.

When the winter grows chill,  
Joy abides with me still;  
For my bulbs are all stored  
Like a miser's rich hoard.  
    So I dream about glads,  
    And I plan about glads.

But when searing drought came  
O'er the land like a flame,  
It burned up my treasures  
And bereft me of pleasures.  
    Then I sighed about glads  
    And I cried about glads.

But with whispers of spring,  
Then my sadness takes wing;  
And my heart's all aglow  
With delight; for I know  
    I'll be planting new glads—  
    Most enchanting new glads.

—EDITH FAIN COLLINS.

"But first of all I want to tell you how very pleased I have been with all the corms supplied to me by you this season. Even though I did not care for some of the varieties when they flowered the corms themselves have been excellent quality. So far as I know I have not had a single failure among the large quantity I had from you."

—PERCY S. TODD, England.

## SIZES OF BULBS



No. 1



No. 2

LARGE



No. 3



No. 4

MEDIUM



No. 5



No. 6

SMALL

These pictures show the average size of bulbs. No. 1 will often run larger than this. For the very best bloom the large sizes should be chosen.

Sometimes there is not a great deal of difference between the blooms from No. 1 and

No. 2. Some varieties do not naturally make a large bulb.

Medium bulbs will give you very fine bloom. Many growers prefer No. 4 to any other size.

Small bulbs will most all bloom and will give very creditable flowers and make fine large bulbs for another year.

Personally I like No. 3 size. I would very much prefer a young No. 3 bulb to a large old one, such as are often sold in cheap collections and in chain stores, tho to the novice the very large bulbs look the best. If the largest bulbs are used for exhibition flowers all eyes but one should be cut out.

My packages of bulblets and in bulk will be mostly medium size. In small quantities especially of the newer varieties I send out extra large or jumbos as far as possible though some varieties never make anything larger than medium sized bulblets though they germinate well.



Extra Large Bt.



Large Bt.



Medium Bt.



Small Bt.

"I am more than pleased with the bulbs I ordered from you."

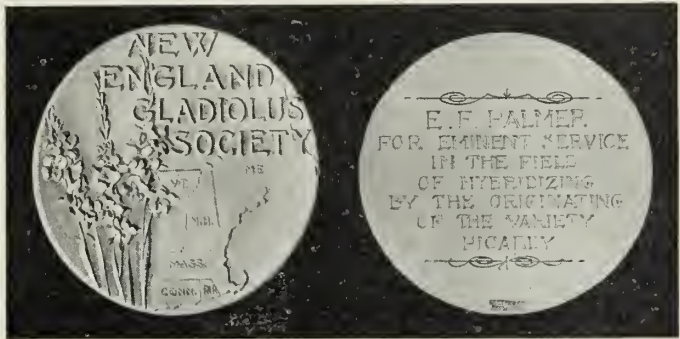
—FRANK V. MOODY, Mass.

# The Palmer Strain of Gladiolus

This strain is composed of varieties produced by Mr. E. F. Palmer, Vineland Station, Ontario. The varieties are noteworthy because of their exquisite beauty both of color and form and also good propagating qualities. In many of them the throats are perfectly clear color without the objectionable markings that many varieties have. Most of them are so outstanding in these characteristics that they constitute a separate strain.

The forerunner of this strain was PICARDY. This variety has been on the market for several years but it is still the most outstanding variety in existence

and the most popular gladiolus in the world. It is not only extremely outstanding itself but has proven to be an exceptional parent to use in hybridizing. Some fine seedlings of Picardy are already on the market and there are many more coming along to be introduced in the next few years. PIC-



*Medal awarded Mr. Palmer by the New England Gladiolus Society for "Eminent Service in Breeding in producing the variety Picardy"*

ARDY is so outstanding itself and as a breeder that the New England Gladiolus Society has awarded Mr. Palmer a gold medal for eminent service in breeding in producing this variety. Though two or three other varieties have been introduced in the last year or so that can be grown somewhat larger, Picardy still stands pre-eminent as the variety combining to the greatest extent large size and exhibition type spikes with beauty of color and form.

There are many other fine varieties in this strain. In the smoky exhibition class I know of nothing that can touch BAGDAD. Growers who have tried DEBONAIR say that it is going to make a better cut flower variety even than PICARDY. DUNA is a wonderfully chaste thing that will make a wonderful cut

flower variety; CORONATION is very beautiful; RAPTURE will make a fine late midseason florist variety; WASAGA is probably the most beautiful variety in existence though it does not make so large a spike as PICARDY; CHAMPLAIN is the best early light blue; JONQUIL the deepest yellow of a perfectly clear shade; REVERIE is exquisite; ROSEX will make a name for itself both as an exhibition and cut flower variety when it becomes more plentiful.



*Bulblet field. Bagdad in foreground.  
Rows 900 feet long*

But to name only a few of these varieties is to depreciate the others. They are practically all good propagators and growers who are wise are stocking up with the Palmer varieties.

We ordinarily introduce only three or four varieties a year but these varieties are growing better every year. We are putting out some very fine ones this year and have still better ones on the way.

"I am extremely fascinated with Mr. Palmer's introductions and as a hybridist I think he is wonderful."

—I. L. JURD, Australia.

"I have been entranced with the Palmer seedlings so much so that I must have more of them. I am going to ask you for repeats so that I can work up a stock."

—PERCY S. TODD, England.

**Acadia** (Com) (Dec) (80) Geranium pink shading lighter toward the center with a blotch of cream yellow with pink lines. 5-6 well arranged blooms open on medium tall always straight spikes. Color somewhat similar to Sunshine Girl but does not crook like that variety. A nice clean cut pink sort. I have had good reports on it.

**Bagdad** (Ex) (Com) (90-100) Smoky old rose shading somewhat darker toward the edge and lighter in the throat. Smooth clear color. Practically a self color though there is a faint creamy blotch marked with pink. 6-8 immense blooms open at a time. Blooms often six inches or more across. Fine propagator. Though this variety is really an old rose color it can be entered in the smoky exhibition class and when well grown it can beat anything I have seen in this class. At the Montreal show last August three or four different growers entered magnificent specimens. There was no question about these specimens beating other varieties. It was just a toss up between the different entries of Bagdad as to which vase in the class would win.

"Bagdad, which I consider the most beautiful of all, has shown only one slight fault under almost impossible conditions. The extreme edges of the petals have a slight tendency to burn and curl in intense heat but what a flower."

—LAKE DEUEL, Nebraska.

"Think Bagdad will go over big. Showed it at the Eastern States Exposition this past week and judging from the comments heard it seemed to take well because of its large flower spike and color."

—ARTHUR ARENIUS, Mass.

"Here is something that perhaps is not a record but very fine indeed. I bought 4 No. 4 Bagdad from you in 1934. These gave immense spikes, the best of which was a spike with a 31 inch flower head with six open and lower floret measuring 6¼". When dug gave four over size No. 1 bulbs and about 80 bulblets, mostly jumboes. These bulblets were peeled and planted on April 5, 1935. Practically 100% germination. These began blooming on August 29, 1935, most spikes having 12-16 buds. Altogether, twenty-five spikes bloomed. The prize was a spike with 16 buds, 6 open, flower head 23" long, plant 4 feet. Lower floret measured 6", second one 5½". This spike came into bloom September 15, 1935. When dug the 80 bulblets produced 74 bulbs, 12 No. 2, 21 No. 3, 30 No. 4 and 11 smaller size."

—J. J. JECMENEK, Iowa.

**Beacon** (Ex) (Com) (75-80) Clear bright rose doree scarlet with large cream blotch. Very tall, straight spikes with 8-10 well placed blooms open. Blooms medium large, well opened, waved and somewhat ruffled. Very striking. Believe this will become a very popular exhibition and commercial variety. It is so good and our stock at the time of introducing last year was so small that I am not selling bulblets this year.

**Champlain** (Com) (Dec) (62-70) Self light blue with inconspicuous darker throat markings. Strong vigorous healthy grower which is unusual with blues. Spikes very tall and straight with 6-7 large blooms open. I believe this variety will be the most popular light blue for early cut flower trade.

**Cherokee** (Com) (Dec) (65-70) Color is rose doree shading lighter in upper throat. Large blotch of dark rose or amaranth purple which blends well with the general color effect. Tall spikes with 5-6 large well placed ruffled blooms open. I believe this will become a popular early cut flower variety.

**Coronation** (Ex) (Com) (80-85) Soft light salmon shading to cream and creamy yellow deep in throat. 7-8 large well placed blooms open. Medium height. Beautiful cream color. Have had some good reports on it.

**Debonair** (Ex) (Com) (90) LaFrance pink shading to shrimp pink in throat with creamy throat blotch lightly peppered crimson. This is practically a clear light pink except that it sometimes flakes darker. Very tall, strong always straight spikes. 6-8 medium large blooms open. This variety along with Bagdad and Symphony has the longest flower heads I have ever seen in any glad. Debonair grows 5-6 feet tall and it is a pleasure to cut the spikes for market.

Some growers have tried this variety and say that it will become a better cut flower than Picardy. A grower in Oregon who bought a quart of bulblets last year for \$35.00, said they made growth shoulder high. He was sorry he did not buy three quarts instead of one.

"The free bulbs, Duna and Debonair, were the most beautiful I had ever seen."

—ORVILLE E. SLETTEN, N. D.

"Coronation, Lindesta, Debonair, Duna and Rapture were all fine."

—J. DEVER ROGERS, N. Y.

**Duna** (Dec) (Com) (85-90) Soft light pinky buff shading to pale yellow at base of lip petals. Back of petals a shade darker. Beautiful clear distinct new shade in glads. 5-6 good size blooms open. Especially fine for florist use. Just the kind of flower that florists should use more of. I predict great popularity for this variety. Have had good reports on it. I especially recommend Duna.

"Coronation, Debonair and Duna are all that you claim them to be and more and all these were from small and medium bulbs."

—JOHN R. WERGER, N. J.

**Evensong** (Dec) Large ruffled smoky with creamy blotch. 7 or 8 large flowers open. It has been called an improved Mother Machree. Has better color and is larger.

"Oh why did you hide Evensong from us for so long? I saw it at the glad show in Pittsburgh and have waited patiently ever since. It is wonderful."

—C. R. WADE, Penn.

**Golden Cup** (Com) (Dec) (80-85) Deep yellow sometimes flaked a darker shade but mostly a clear color. Blooms large and somewhat of a cup shape. 5-6 open.

"You sent me 2 No. 4 bulbs of Golden Cup as an extra last year and it certainly is a dandy so I am ordering more this year." H. O. STRENFERT, Mich.

**Inspiration** (Dec) (85-90) Deep shrimp pink, throat lightly marked pink on cream ground. Blooms ruffled and semi-lacinated giving it a distinctive effect.

This variety is beautiful but it sometimes comes with bare spots on the stem—that is, one or more blossoms may be missing. But it is worth trying.

**Jonquil** (Com) (Dec) (65-70) The deepest clear yellow in existence. Medium size on tall, straight spike. 8 open at once. Not so large as some but positively the deepest and best absolutely clear shade of yellow yet produced.

**Lady Eaton** (Dec) (80-85) A light rose pink with purple penciling and peppering on an almost white throat. 6-7 large wide open blooms with rolled petals on a very tall, strong, vigorous plant. Can be very fine.

"Lady Eaton was wonderful." —A. L. STEPHEN, Mass.

"Lady Eaton is beautiful beyond all description."

—MRS. T. B. BIGELOW, Mass.



Harold Hayes of Vermont with a nice spike of Picardy

**Lindesta** (Com) (Dec) (90) Soft salmon rose with cream throat. 7-9 medium large well placed blooms open. Tall, strong grower. Sometimes flaked but usually clear. Some consider this the most beautiful glad of all.

"Wasaga, Duna and Lindesta are top-notchers and three of my joys."

—B. L. SEAMON, Ohio.

"Lindesta and Wasaga were very beautiful."

—CHESTER L. REARICK, Pa.

**Mywag** (Dec) Light though vivid salmon shading to white throat with large very brilliant showy scarlet blotch. Immense round florets somewhat ruffled and with prominent midribs. Everyone who has seen it in my garden has enthused at its beauty and showiness. They always spot it in the garden even at some distance. The name is the abbreviation for "My What A Glad" which many people exclaim when they see it. The stems sometimes kink but not always and the flower is so extremely showy and beautiful that you can overlook some of its faults.

"I saw Mywag at Briggs in California. It is sensational."

—J. D. LONG, Colo.

"I saw a Mywag the other day that was

—R. A. WALBAUM, N. D.

seven inches across with five open."

"The big kick I received from Mywag was that I had only one bulb and of course only one spike to judge the immense size and coloring of the bloom."

—CHAS. E. HUNT, N. J.

"Mywag is everything you say about it and it surely is well named. Only I think the emphasis should be on the "What."

DR. MASEK, Ohio.

**Picardy** (Ex) (Com) (90) Soft shrimp pink without flecking. A blotch of light flesh pink shading to shrimp pink at edges. Soft inconspicuous feathering of rose. Usually 7-8 open but has been grown with as high as 12 or 13. Blooms have been grown up to nearly 7" across. You can get many 6" flowers. A tall, strong grower and very heavy propagator.

Picardy is generally considered as the last word in pink glads. The most popular variety in existence and is a wonderful parent in hybridizing. Many fine seedlings are coming from Picardy. No garden is complete without Picardy. If you have not seen this variety you have no idea how beautiful a glad can be. I am giving only one testimonial on this variety as I have too many of them and everyone who knows glads at all knows that Picardy is the most outstanding gladiolus in the world.

"Hottest May in thirty-seven years did not hurt Picardy."

—ARTHUR M. ERWIN, Florida.

**Pirate** (Dec) (85-90) Beautiful dark rose red. Somewhat lighter in upper throat. Especially beautiful under artificial light. Several immense wide open blooms open at a time. One of the finest in the dark shades.

"I am writing to say how pleased I was with the bulbs. Especially, Roi Albert, Lindesta, Sultan and Pirate."

—R. H. HALL, England.



**Premier Henry** (Dec)(80-85) Geranium pink shading lighter deep in the throat. Moderate size diffused blotch of scarlet with carmine center. 4-7 immense round blooms on a straight spike of moderate height. Blooms often 6" across are wide open and rather heavily ruffled and have very heavy substance. Though not quite so tall as we would like it is a wonderfully beautiful variety. This variety has also proven itself valuable in hybridizing.

**Rapture** (Dec)(Com) (Prim. Grand.) (75-100) Medium light salmon with diffused creamy yellow blotch. Very tall, strong grower and propagator. Up to seven or more large blooms open at a time. Should become a very good commercial. Some wholesale cut flower growers have told me that they liked it very much for commercial work. "Wasaga and Rapture are both very beautiful and for me Rapture made the best spike for cutting. It was so tall and straight."

"My florist likes Rapture very much."

—W. KINGSLEY, Conn.

—MRS. VIOLA L. SHROYER, Ohio.

J. L. Hague of Arkansas, a big commercial cut flower grower, told me that he liked Rapture as a cut flower very much. He said he had a bulblet spike with 19 buds.

**Reverie** (Dec) (Com) (90) Light safrano pink shading to cream in throat, giving the general color effect of clear, clean light pink and cream. A basket of these is a very beautiful thing. Vigorous healthy plant and tall strong always straight spikes. 6-8 moderately large lightly ruffled blooms open at a time.

"I also won first with Reverie. I think this is a world beater."

—R. A. WALBAUM, N. D.

**Rideau** (Dec) (85-90) Unusual and attractive smoky salmon shade. 6-8 blooms out on medium height spike. Though this variety has not been the sensation that some of the other Palmer varieties have it is really good and some people like it very much.

"I was all prepared to dislike Rideau because not many so-called smokies are among my favorites but I found it very good."

—JOHN R. WERGER, N. J.

**Rosex** (Ex) (Com) Light rose sometimes approaching a salmon scarlet. Has an inconspicuous blotch. The color of this variety varies somewhat sometimes being much darker than at other times and often is flaked with a sort of salmon orange. So that under artificial light it often looks almost a scarlet. Is fine at anytime but even better under artificial light than daylight. Opens 8-10 or even more well placed blooms on a long flower head of 18-24 buds. This variety is one of my favorites and I am positive that when it becomes more plentiful it will be one of the leaders especially as a commercial cut flower variety. It is a seedling of W. H. Phipps but far superior to that variety.

Because of a slight mixture in my planting stock I am not selling small bulbs or bulblets this year.

"The Rosex you gave me was the one I liked best."

—EDGAR SHONTZ, Pa.

**Sahara** (Ex) (90) Light russet color with a soft blotch of cream lightly peppered russet and with scarlet penciling. Opens 8-10 medium size well placed blooms. Stands the sun wonderfully well. A fair propagator but stock is very scarce as yet.

**Spray of Gold** (Com) (Dec) (Prim. Grand.) (60-70) Beautiful clear deep yellow. No markings whatever on it.



*Bulblet field. Picardy in foreground. Just ordinary field conditions. No irrigation.*

4-5 large blooms open. Somewhat ruffled. A beautiful landscape or basket variety. Also good forcer in the greenhouse.

## **Symphony**

(Dec) (Com) Light rosy pink with clear cream blotch. Somewhat the color of Coryphee but tall and straight. Never crooks. Medium large flowers. 6-8 or more open at a time. This variety has as long a flower head as Debonair and much the same habit of growth. I am sure you will like it.

"Symphony was particularly good. The color is fine and it produces really good spikes."  
—R. H. BATH, LTD., England.

**Vagabond Prince** (Ex) Color is an unusual iridescent garnet-brown lighter in upper throat and with a small blotch of glowing scarlet-red on lip petal. 8-10 well placed medium size blooms open at a time on a strong straight spike. One of the oddest and most gorgeous varieties I have ever seen. It attracts attention anywhere.

"Just a word to say the Palmer varieties were fine again. Vagabond Prince is to me especially outstanding."  
—GRANT MITSCH, Ore.

**Wasaga** (Dec) (Com) (90-95) A glowing buff with wide open ruffled blooms. Color is perfectly clear with no throat markings or flecking of any kind. 4-5 good size blooms open though sometimes more.

Though Wasaga is not so large as Picardy nor has so many blooms open at a time it is in my opinion, the most beautiful variety ever produced and many other people have told me the same thing. A wonderful variety for floral work. If the florists would use more of such varieties as this instead of Halley, Giant Nymph, etc. they would increase their sales tremendously and the gladiolus would be regarded by the public much more highly. A glad is not just a glad when it is Wasaga.

"Duna, Wasaga, Picardy and Mary Elizabeth are about the most beautiful glads I have ever seen. Must have more of them."  
—DR. C. M. MASEK, Ohio.

"Schubert, Coronation, Lindesta, Debonair, Duna and Rapture all were fine."  
—J. DEVER ROGERS, N. Y.

"Debonair and Coronation were beautiful."  
—E. G. SHAFFER, Pa.

"Debonair was the most promising thing we tried last year."  
—R. MAUCLINE, N. J.

"Champlain was fine, Reverie I think was the most outstanding."  
—KARL BLOOM, Conn.

# Numbered Palmer Seedlings

**26892** (Dec) (Com) (Early midseason) Salmon pink. Six or eight medium large blooms open on a tall, straight spike. A fine cut flower.

**26121** (Dec) (Com) Very large salmon with cream yellow throat. Very beautiful. 5-6 large wide open blooms open at once on a good length spike. We have several times been on the verge of introducing this variety under name but somehow or other there have always been plenty of other varieties so we have not named this one. However it is well worthy of a name and is much more beautiful than the majority of named varieties on the market. I am sure you will like it.

**BC25084** (Dec) (Com) A very nice orange on which I have had a number of good reports. Several medium size blooms open on a tall, straight spike. I am working up a stock myself for the cut flower trade. Think it will go over big in the cut flower markets in the fall. I showed it at Boston one year and many people liked it very much.

**26935** (Dec) Large pink quite similar to Rosex but not so tall nor so many blooms open at a time. Very nice.

**26242** (Dec) Tall ruffled rose red. Very pretty.

**27271** (Dec) (Com) Huge medium red. Several massive blooms open on a tall, very strong plant. This variety was originally named with the intention of introducing it but finally decided to sell it as a numbered seedling. Many people like this very much.

**26895** (Dec) Immense rich smoky. Very attractive color. This variety has been sold in the Palmer collections of numbered seedlings. Would have been introduced but for the fact that the stems often crook. But in spite of this have had more calls for it from people who have seen it and who have got it in the collection than for any other seedling. It doesn't crook any worse than a certain new high priced variety from New Zealand which is being sold without mentioning the fact that it crooks. Through an oversight the bulblets of this variety were not planted two years ago so I haven't any large bulbs, but any size bulb will bloom. Even bulblets will often bloom. A heavy propagator and a variety that every glad fan will like.

"Seedling No. 26895 produced more interest here than any other which I grew. I think it is the richest color of any glad I ever saw."

—JAMES A. MERRITT, Ohio.

**M7021** (Dec) (Com) Beautiful flame cerise. 8-9 blooms open with the rest of the buds showing color. Medium size blooms and not always well placed but what a color! I feel sure M7021 will make a fine cut flower variety and I am working up a stock with that in view.

**27694** (Dec) (Com) Ruffled needlepoint soft rose. Large beautiful flowers. The only fault of this seedling is that the spikes aren't as long as we would like. If they were only a little longer we would certainly have introduced it at a high price.

**27585** (Dec) Salmony smoke or mulberry. Several medium size beautiful ruffled blooms open. A very beautiful thing in the mulberry shades.

**H6141** (Dec) (Com) Beautiful creamy salmon somewhat similar in color to Coronation. It blooms early midseason and at the time it comes in there is not a better cut flower in my whole garden. The spikes are not quite so long as I would like but aside from this it is a very beautiful thing. A fine cut flower.

"The Palmer seedling H6141 was grand and rivalled Picardy."

—H. C. SANDERSON, Mass.



Seedling No. 27585

# 1936 Palmer Introductions

I am introducing the first four in the list below for Mr. Palmer in the regular way. The next two, Hector and Coquette I have bought outright and I am introducing them on my own account. The last two, Royal York and The Mogul, I have bought outright and I am giving them as premium bulbs. This is because Mr. Palmer doesn't want to introduce more than four varieties a year at the regular price.

**Amberglow** Sdlg. 27725 (Dec) (Com) (70) Clear unmarked empire yellow. (Ridgeway.) Deep rich color combined with unusually attractive bloom form. 7-8 open. 16-18 buds. Medium large size. A beautiful clear amber color much admired by garden visitors who know glads. A good shipper. More beautiful than any yellows I have seen. Can be classed as a yellow but is really a soft but brilliant amber. **\$5 each, any size.**

**Angelus** Sdlg. 30292 (Dec) (Com) (85-90) Clear medium unflaked salmon pink with unmarked cream blotch. An unusual but extremely beautiful color. 7-8 open. 18 buds. Blooms large wide open moderately waved and frilled. Attractive in form. Blooms have a waxlike appearance. Tall, very strong growing decorative. Exquisitely beautiful shade. Fine propagator. **\$5 each, any size.**

**Jalna** Sdlg. 30169 (Ex) (90) Unusual smoky color consisting of about equal parts of iridescent salmon and rose ash. Ten large wide open blooms open. Usually well placed. Heavy propagator.

Everyone to whom I showed this seedling this past season was much enthused over it. Feel sure you will like it. **\$5 each, any size.**

**Regent** Sdlg. 30113 (Ex) (Com) (90) Clear glowing scarlet with 9-10 large blooms opened at once on tall, straight spike of 22-24 buds. Opens well to the tip. A good propagator. Winning seedling in the formal class at the 1934 Canadian Exhibition. For a commercial this has much better color than Commander Koehl of which it is a seedling. **\$5 each, any size.**

---

**Hector** Sdlg. 26201 (Dec) (Com) (Midseason) Salmon scarlet with reddish speckles on cream throat. Lighter in upper throat. 5-6 immense ruffled blooms open at a time on a moderate height spike. This is a seedling of Pfitzer's Triumph and the best one I have ever seen outside of Premier Henry. Everyone who has seen it in my garden has thought it was a wonderfully fine thing. It is a gorgeous variety.

I am introducing this at a low price as I have a fair stock of large bulbs. The price of this will probably be the same next year. Shall not sell bulblets or small stock for two years. It is a good propagator but through a mistake the bulblets were not planted this past season.

Large bulbs \$1.00 each.

**Coquette** Sdlg. 27692 (Informal decorative) (Midseason) Beautiful clear creamy salmon with cream blotch. This variety does not open many blooms at a time, the stems sometimes kink a little and though the flowers sometimes reach five inches or more in diameter it is not a large flowered variety. If you are interested only in the large exhibition varieties regardless of color don't buy COQUETTE. But if you want to see something really beautiful by all means try it. Rev. Neal R. Van Loon of New Jersey said it was the most beautiful thing he had ever seen outside of Wasaga and I think anyone who can appreciate real beauty will agree with him. When Mr. Van Loon was here I gave him some spikes of different varieties including COQUETTE to take home and he said that Coquette was the only one that carried well and opened up to the tip after he reached home. He was a day and a half on the road.

I am selling this at a low price as I have a fair stock of it and it is not a variety that a lot of people will want because many people cannot appreciate beauty. They just want the big stuff no matter what the color is. But if you are one of those who can appreciate beauty of color and form be sure to try COQUETTE.

\$.25 each, any size.

Discounts and extras do not apply to 1936 introductions.

## PREMIUM BULBS (Palmer)

### Royal York

Sdlg. 28293 (Dec) (80) Deep scarlet with a hint of salmon. Six very large wide open blooms open on an extremely strong, robust plant and spike.

This would have been introduced before but for the fact that occasionally some of the blooms are misplaced. However it has been shown at a few shows where it attracted a lot of attention and so many people have seen it and wanted it that we have decided to introduce it. It won a prize as best seedling at the Canadian Exhibition in Toronto.

This is a premium bulb. Not for sale but is given with an order of \$15.00 or more.

### The Mogul

Sdlg. 28442 (Ex) (Midseason) Salmony maroon with darker lines in throat. 8-10 extremely large, well opened, slightly ruffled blooms open at a time on a long very straight spike of twenty or more buds. Most of the buds are showing color at the same time that the blooms are open. A most gorgeous variety in the dark class. I am very sure The Mogul will become very popular.

This variety is not for sale this year but is given as a premium bulb on orders of \$30.00 or more. On an order of \$30.00 or more both ROYAL YORK and THE MOGUL will be given.

Next year this variety will sell for not less than \$5.00 each and no bulblets will be sold next year.

A leading seedsman and gladiolus grower from Canada who saw this in my garden this past season said it would make a wonderful variety for a premium. He was much enthused over it.



## TRI-OGEN

### The all-purpose spray

Fungicide—Insecticide—Plant Stimulant

Complete Protection against Plant  
Insects and Diseases

In the past, Mildew and Black Spot have been most difficult to combat. However, these diseases are now easily controlled with the Tri-ogen Spray Treatment, which gives COMPLETE protection against all diseases and insect pests. It is easily applied and also acts as a plant stimulant—producing vigor in growth with resultant luxurious blooms, heretofore considered impossible. The Tri-ogen Spray Treatment applied weekly, from early season until late frost, makes it possible for the amateur to achieve the success, in many cases, comparable to the professional grower.

*TRI-OGEN was officially adopted for the exclusive protection of the Garden of 16000 Roses, at the CENTURY OF PROGRESS, Chicago World's Fair.*

#### PRICES

- A. Small Kit (makes 16 quarts) . . . . . \$1.50
- B. Medium Kit (makes 64 quarts) . . . . . 4.00
- C. Large Kit (makes 32 gallons) . . . . . 6.00
- D. Estate Kit (makes 128 gallons) . . . . . 20.00

Tri-Ogen is especially good for Roses.

Send Orders Direct to Me



Lloyd Curtis, Florida, and his Glads.

*This shows they can be grown  
in warm climates.*

## The Lady of the Garden

Oh, I used to be quite happy. I can well recall the time  
When the bells of joy were ringing, and my heart was like a rhyme.  
But those days are gone forever. Ah, alas the time has gone  
When my gladiolus called me in the early purple dawn.  
For the lady of our household has usurped my rightful place.  
Do you wonder I'm dejected? That I wear this mournful face?  
For I'm fussing with a skillet, and I'm dusting up the rooms,  
And I'm feeding Junior spinach while she's cutting early blooms.

I've considered an injunction; I have thought of a divorce,  
But I have no legal action for the fault is mine, of course.  
And the plain and simple reason why I got myself in dutch  
Was because I talked unwisely—and because I talked too much.  
For I spoke of gladiolus to the poor defenseless gal,  
'Till I broke her sales resistance and I shattered her morale.  
Then I saw her reason totter, and I breathed a thankful sigh  
When I knew that she was bitten by the bug, the same as I.

Then, for one short, blissful summer, I attained the mountain height  
While we loved our glads together—watching o'er them day and night.  
When the blooming season started, we, with rapture, were replete.  
She'd forget to do the cooking—I could never think to eat.  
From the first faint hint of morning 'till the evening's crimson close  
We would spade and scratch together, weed and rake and play the hose.  
Then we'd pause to rest a moment, when the last faint light had gone,  
Grudging the few hours wasted 'till the coming of the dawn.

'Twas a paradise we lived in, working there, like army mules.  
'Twas a paradise, but, brother, 'twas a paradise of fools,  
For I learned (Take warning, brother. 'Tis a sorry, sorry tale)  
That the female of the species goes more cuckoo than the male.  
Mine's gone on the budget system, buying bulbs o'er which to gloat,  
While I'm forced to rob a scarecrow when I need a winter coat.  
With my catalogs around her, she sits in a blissful haze,  
While I shiver by the fire as I long for summer days.

But they'll bring no joys however. They will be drab days for me.  
The bright ones are gone forever; that much I can plainly see.  
She, perhaps, will let me plant them, but when they begin to bloom,  
I'm convinced my waking hours will be spent in this one room,  
For the baby needs attention. (Little chap looks just like me.)  
And, if anyone's elected, I know well whom it will be.  
So, while she is in the garden, in a blissful, happy trance,  
I'll be cleaning up the kitchen, yes, and changing Junior's pants.

—BURTON L. SPILLER.

*"I received my bulbs today and was very much pleased with the quality of the bulbs and the generous count. I want to particularly thank you for the fine extras as I surely did not expect anything of the kind on an order as small as mine."*

—W. M. RUSSELL, Canada.

## 1936 Introductions

**Alayne** Sdlg. 461 (KINYON) (Dec) (Com) Midseason. Beautiful new shade of light rose. Never been known to fleck. 5-7 medium size blooms open. Tall, straight stem with 20-24 buds. Petals somewhat ruffled, rolled back. An exquisitely beautiful variety that attracted instant attention at the A. G. S. Show at South Bend last season where it won an Award of Merit on the exhibition scale. It was judged as an exhibition variety because it was so entered but it was scored by the judges as decorative and made 88 points—three or four points more as I remember it than it scored on the exhibition scale.

I liked this seedling so well at the National Show that I went to Mrs. Kinyon's place afterward and saw that it was a good grower and propagator and I was so enthused over it that I bought the stock and I am introducing it this year.

When I was at Mrs. Kinyon's I cut a spike and brought it home out of water. Was on the road two days and it opened up perfectly to the tip lasting about two weeks.

The blooms of this variety are not so large as some but they are an exquisitely beautiful shade, always well placed and are plenty large enough for commercial purposes. Some varieties are too big and unwieldy for floral work but the spikes of Alayne are just right and I predict this will become a very popular commercial and decorative variety. Mrs. Kinyon tells me that the florist who buys most of her glads wanted every spike of it that she could cut. Several people who saw it in her garden and at the show have written me for it.

**\$5 each for large bulbs and with each large bulb I will give a small bulb free. No bulblets this year or next.**

**Gladys Clegg** (SYMONS) (Dec) (Com) Very earliest. Warm apricot salmon with large velvety scarlet maroon blotch. Extremely early flower, blooming as early as anything I have on my place. Will be very valuable as a commercial for this reason. Very hardy and good propagator. Color stands well in all weathers and is very attractive under artificial light. Due to its nice color and earliness it should become a leading commercial.

Won an Award of Merit at the Ballarat Test Gardens, Australia.

**\$1 each for any size bulb. Stock limited. No bulblets this year or next.**

**Innovation** (BATH) (Dec) Bronze. This is the nearest to a bronze I have seen in any variety. Four or five large blooms open. I showed this in Boston two years ago and everyone was wild about it. For something unusual in color I think this will please you. **\$1.00 each, any size.**

Discounts and extras do not apply to 1936 introductions.

## REGULAR LIST

In describing the various varieties in this catalog I have tried to make the descriptions as accurate as possible without going into fine details of color as given by the Ridgeway Chart. Very few people have this chart and wouldn't know what it was all about if I did use it. But I have tried to make the descriptions as accurate as I can in language that you can understand. And I try to be honest in these descriptions. Some people write me asking my advice about certain varieties evidently thinking that my personal opinions are different than as set down in the catalog descriptions. This is not the case. Where I recommend a

*"Received the gladiolus bulbs this afternoon, Nov. 22, 1935. Many thanks for generous count and extras."*

—MRS. ANDREW ZWACK, N.Y.

*"The bulbs arrived yesterday, Nov. 25, 1935, and were in perfect condition and I want to thank you for the many fine extras you sent and also for the early shipment of the bulbs."*

—WALTER KINGSLEY, Conn.

variety here it is because I personally think it is worthy of recommendation. But the opinions given here are my own and I can't guarantee you will think as I do.

The letters following each variety is the abbreviation of the name of the originator: (K) KUNDERD; (PF) PFITZER; (HORN) HORNBERGER; (D) DIENER; (SAL) SALBACH. I am marking the varieties (Com) COMMERCIAL; (EX) EXHIBITION; (Dec) DECORATIVE. Where I have put down a variety as commercial I mean that the color is such that the florists can use it. But it is not necessarily a good variety for shipment to large wholesale markets. Such varieties as are real commercial varieties I have noted in the text.

I am giving the blooming dates as near as I can on all the varieties I know but these blooming dates are not necessarily strictly accurate as they vary according to weather, climate, locality, etc. and often with the season. If the blooming dates are not given you may rely upon them being midseason. So please do not write me for any further dates than as given here.

Varieties in boxes are especially recommended.

**Acadia** Palmer strain. See page 10.

**Aflame** (HORN) (EX) (Com) (80-85) Begonia rose shading to bright orange flame near the base. Back of petals brighter shade than the front. Very large, 6-8 open at a time. This variety does not ship well long distances but have had reports that local florists like it very much. Very popular.

**Aida** (PF) (Dec) (Com) (70) Very deep blue with small reddish lilac blotch. Large flowers, five open, very early. Easy propagator. The earliest and one of the finest varieties of this color. One of the nearest to blue.

**Alayne** (KINYON) 1936 Introduction. See page 19.

**Albatross** (PF) (EX) (Com) (80-85) Large pure white with 6-8 large blooms open. Blooms have a tendency to face up in the so-called lily form. Very strong grower and propagator. One of the most popular whites both for home garden and cut flowers.

**Allegro** (PF) (Com) (EX) New light lavender blue. Looks like a good one.

**Allemania** (PF) (EX) New large scarlet. Quite similar to Commander Koehl but earlier.

**Al Smith** (K) (Com) (66) Very early tall salmon rose. Medium large flowers. Its earliness should make it a good commercial variety. Demand exceeds supply.

**Amador** (KINGSLEY) (Dec) (Com) Glowing red that does not burn in the sun. 5-8 large beautiful blooms open at a time. Tall straight spike. Becoming increasingly popular every year as a cut flower.

**Amberglow** Palmer strain. 1936 Introduction. See page 16.

**Ambrosia** (K) (Dec) (72) An entirely new and distinct shade of old rose tinged with dark salmon. Nothing else like it.

*"Bulbs came in good order this noon, Nov. 21, 1935, and are good. Thank you for the extras, Duna, Debonair and Royal York. Will watch out for the last named with interest."*

—F. C. HUBBARD, Mass.



*"Just received my order this morning, Nov. 20, 1935, and I was very well pleased with it.*

*"Thanks for the extras. I was not expecting so many."*

—WM. L. BAILLARGEON, N. H.

**Angelus** Palmer strain. 1936 Introduction. See page 16.

**Antione** (K) (Dec) (67) Clear deep yellow, slightly ruffled. Not large flowers but very early.

**Apricot Glow** (PAL) (Com) (Dec) (70-80) Beautiful, clear warm apricot shade. Medium size. One of the parents of Picardy. Tall straight stems. Nice for baskets and florist work.

**Ave Maria** (PF) (Ex) (Com) (75-80) Medium blue with small purplish blotches. Sometimes flaked. 7-8 large usually well placed blooms open. Good propagator and very popular. Best medium blue.

**Bagdad** Palmer strain. See page 10.

**Beacon** Palmer strain. See page 10.

**Bella Donna** (PF) (Dec) Early large light blue with darker blotch. 6-8 open at a time.

**Benedict** (CROW) (Dec) (85) Soft deep rose with six medium large round ruffled blooms of heavy substance open at a time. A beautiful deep rose.

**Berty Snow** (MAIR) (Ex) (Com) (75-80) Pinkish lavender often flecked darker. 7-10 large well placed flowers on a long spike. Good propagator. Quite popular.

**Betsy Bob-up** (CANINE) (Ex) (Com) Light pink sport of Betty Nuthall. Said to have all the good qualities of Betty but a lighter color. Should become as famous as its parent.

**Betty Co-ed** (BRIGGS) (Com) (Dec) Soft creamy pink. Very beautiful. Fine for baskets and florist work.

**Betty Nuthall** (SAL) (Ex) (Com) (100) Warm coral pink with pale yellow throat markings and a slight tinge of orange. 6-8 medium large blooms open. Very good propagator. One of the very best commercial varieties grown. Don't know of anything better as a shipping glad in its season. Makes enormous spikes which bring top price in the market.

**Bill Sowden** (FALLU) (Dec) Immense massive deep blood red often flaked darker. 5-6 open. I don't know of a more beautiful red in this shade. There is some controversy as to which is the better, Bill Sowden or Commander Koehl. I personally think, and many others have also told me, that they consider Bill Sowden the most beautiful dark red variety in existence. It does not grow so tall as Koehl and doesn't have quite so many blooms open but for the home garden I consider it one of the very best. Beautiful in baskets and in floral work also.

*"I have bought glads from quite a number of glad growers but I have never had finer bulbs and flowers than what your bulbs are and every one of them are true to name, something I never before had."*

—MRS. J. WINFIELD SNYDER, Pa.



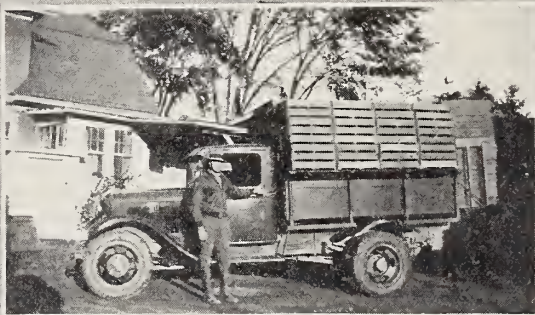
DIGGING  
BULBS



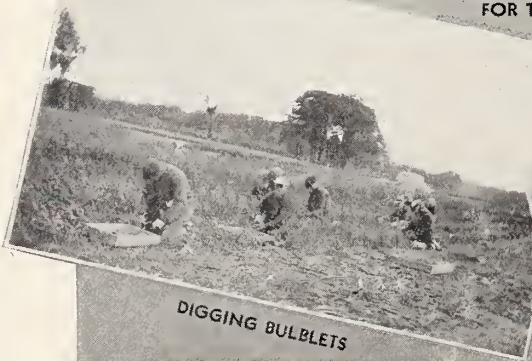
CUTTING  
BLOOMS  
for MARKET



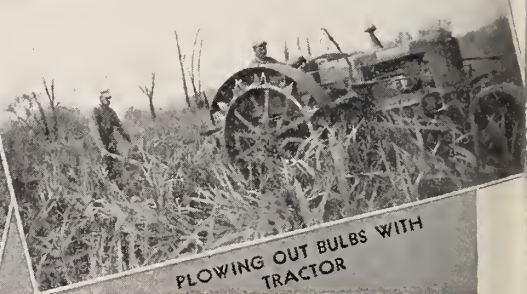
VIEW ACROSS ONE FIELD



LOAD OF TRAYS STARTING  
FOR THE FIELD



DIGGING BULBLETS



PLOWING OUT BULBS WITH  
TRACTOR

*"The Hercules, Odalisque, Mywag, Gate of Heaven, Maid of Orleans (especially good, want more) were very fine. I believe I liked Premier Henry the best of the new ones."*  
—BEN LINZELL, Washington.

**Bleeding Heart** (BROWN) (EX) (COM) (82) White tinted light pink with large red blotch. Tall, straight spike with 8-10 medium large perfectly placed blooms open. Strong grower. Good propagator. One of the very finest blotched varieties. Expect this to become very popular as a commercial. It is very showy and a good shipper. Be sure to try this one.

**Blue Admiral** (CHRIST) (COM) (DEC) Tall straight growing dark blue. Some claim it is better than Pelegrina. It does stand up straighter but does not open so many blooms at a time and is a little lighter shade. Should become a good commercial where dark blues are wanted. Have had many fine reports on it. In big demand.

**Blue Danube** (PF) (EX) (COM) (80-85) Beautiful medium light blue. Long spike with 6-8 large flowers open. A strong grower but does not propagate quite so fast as some. With me stems are inclined to fall over slightly. Considered one of the best blues.

**Blue Triumphator** (PF) (DEC) Immense pale blue.

**Blushes of Cream** (K) (COM) (DEC) (88) Light creamy pink, canary yellow throat. 5-6 open. Fine color but not a fast propagator.

**Bonny Scotland** (STEPHEN) (COM) (DEC) Beautiful perfectly clear light yellow. Dainty and charming.

**Brightside** (PRESTGARD) (DEC) (COM) Canary yellow flushed pure apricot in the upper throat and tips of orange. Tall, straight growing variety. Flowers four to five inches across. 4-8 open at once. A very beautiful variety though not large. At the Metropolitan Show in New York this past season several people voted for it as the most beautiful thing in the show.

**Bullfinch** (MAIR) (EX) Orange overlaid with slate. A very odd and bizarre color. Blooms not always well placed. Very strong grower.

**Camelot** (ERREY) (EX) Deep salmon pink with crimson blotch. 8-10 well placed medium size blooms open. Good exhibition sort. Better color than most of the Australians.

**Cardinal Prince** (K) (EX) (69) 6-8 self-colored cardinal red blooms open. Makes a fine spike but the stem is inclined to be a little lippy.

**Carolus Clusius** (VELTHUYS) (COM) (DEC) (75-80) Early light pink of "different" shade. 6-8 large well placed blooms open. Fine for an early cut flower. Stems kink sometimes in hot weather but when grown for early blooms as they should be have had no trouble. Fine commercial.

**Cassandra** (ERREY) (EX) Bright pink with large crimson blotches, with nearly the whole spike open at once. Not beautiful but extremely showy. One of Errey's best.

*"Picardy, Rapture, Commander Koehl and Red Lory are gorgeous. Inspiration is very pretty, also Hillbilly was a strong grower with eight large blooms out at once. I like Edith Robson and Maid of Orleans. Also King Arthur is very pretty. In fact they were a fine lot of bulbs and it is hard to tell which is the most beautiful."*

—MRS. B. J. HAYES, Calif.

"Last March I ordered your mixed collection of 100 gladiolus and I am pleased to say that they were even better than I anticipated. I am afraid I am now a glad fan."  
—H. W. BROOME, Texas.

**Champlain** Palmer strain. See page 10.

**Chas. Dickens** (PF) (EX) (Com) Early purple violet. Very tall, strong grower with long spike of bloom. The most popular in just this shade.

**Cherokee** Palmer strain. See page 10.

**Clarion** (CROW) (Com) (Dec) (70-80) Tall medium early clear deep yellow. Five well placed and spaced blooms open. One of the best early yellows.

**Commander Koehl** (PF) (EX) (Com) (80-85) Beautiful large massive clear blood red. Heavy straight spike. This is considered the best medium red. A fine cut flower variety for most markets but in New York at least the florists prefer a brighter red like Wurtembergia. As between this and Bill Sowden, Commander Koehl will grow some larger, taller and straighter but I personally consider Bill Sowden more beautiful. I think you should have both as they are enough different to both deserve a place in your garden.

**Constancy** (ARENIUS) (Com) (Dec) Second early. Large clear rose pink with small darker throat blotch. 5-6 open. This past season was the first time I have had this in quantity and it proved to be a very valuable cut flower variety. It comes in at a time when there is not much else in this color and I found it one of the very best florists varieties. Think it will become a leader as soon as more plentiful.

**Coquette** Palmer strain. 1936 Introduction. See page 16.

**Coronation** Palmer strain. See page 11.

**Crimson Glow** (BETSCHER) (Com) (Dec) (85-90) Large crimson. One of the best of the old time reds.

**Debonair** Palmer strain. See page 11.

**Desdemone** (VILMORIN) (Dec) (95-100) Smoky purple with cream throat. 6-7 large blooms open. Very popular smoky.

**Dominus** (K) (Dec) (69) Early deep purplish red with darker throat blotches. Seven or more medium size blooms open. Good.

**Dorcas Aldrich** (DUSINBERRE) (Com) (Dec) Early rose pink overlaid with ashes of roses. Five or six good size blooms open. A good seller as a cut flower and a vigorous grower.

"I am writing you regarding the gladiolus bulbs which I have purchased from you last season. I wish to say they could not be beat.

I had so many visitors from all sections and they all wondered how I can keep them so nice and healthy and I had so many requests for bulbs.

"Several florists of . . . . . and . . . . . asked me to raise gladiolus for them next season and a resort park asked me to furnish them with bulbs next year. I sold all cut glads to two local florists and received double the market price at Pittsburgh, Pa."

—S. T. BIELESKI, Pa.

# Gladiolus Price List

Winter 1936

THIS LIST SUPERSEDES  
ALL PREVIOUS LISTS

IN CASES WHERE PRICES ARE HIGHER THAN IN THE FALL LIST  
ORDERS WILL NOT BE ACCEPTED AT THE OLD PRICES

ADDENDA

PRICES PER 100

AIDA	#1 \$3.00		
COM. KOEHL	#1 \$3.80	- #2 \$2.80	- #3 \$1.80
DR. BENNETT	#1 \$2.00	- #3 \$1.40	
MAMMOTH WHITE	#1 \$3.20	- #3 \$2.00	
MISS NEW ZEALAND	Small \$2.25	each	

Champlain View Gardens

ELMER E. GOVE BURLINGTON, VT.

## PLEASE READ CAREFULLY

Do not change collections or special sets. The collections are made up as they are for definite reasons and we cannot change them. Any of these collections or specials are very good value.

Do not split quantities as listed. Where a variety is listed at 2 for 15 cents or 4 for 15 cents do not order 1 or 2 at a lower price. There is no profit in any items of less than ten cents and very little at that price. **No single item accepted for less than ten cents.**

**EXTRAS ON CASH ORDERS.** On cash orders of \$2.00 to \$5.00 you can select 10% extra in bulbs of your own choosing. From \$5.00 to \$25.00 select 15%; \$25.00 to \$50.00 select 20% and above \$50.00 select 25%. **These Discounts do not Apply to Collections, Special Offers or Wholesale prices.**

**TO MAKE OUT YOUR ORDER** put everything down on the order blank, just as listed in the price list. Add it up then figure out any special discounts or add on the extra bulbs of your choosing. It is all very simple but some people seem to have a lot of trouble in making out an order.

Also on all orders of \$15.00 or more I will put in a bulb of **Royal York**. (See below).

On orders of \$30.00 or more I will put in a free bulb of **The Mogul** and **Royal York**.

The above discounts and extras are all for cash orders. The earlier the orders are received and the larger they are the more generous we will be with our extras. If you cannot spare all the cash now send 25% and the balance later and we will see that you are satisfied. **But the above extras are only for cash before shipment.**

On cash orders of \$12.00 or more, except collections, I will give a copy of the "Gladiolus Book" by Rockwell if you ask for it and if you have not already had one.

Packages of bulblets run from twenty-five to fifty or more. We give very good value.

You can have 3 bulbs at the 10 rate; 25 at the 100 rate. But no single items for less than 10 cents.

**I GUARANTEE SATISFACTION** and I mean just that. If at any time, either after receiving the bulbs or after blooming, you have cause for complaint just write me about it and I will do my utmost to make things right. This is the only basis on which anyone can hope to conduct a business that will be permanently successful.

At these prices all bulbs, except the wholesale offers, are prepaid anywhere in the United States and Canada and all countries in the Postal Union.

**SPECIAL QUOTATIONS.** Do not ask for special quotations unless you have a large order. We will not consider quoting any special prices on small orders. I publish this price list to give people the prices and do not consider it honest to give one person a lower price than another. **However on a very large order we may be able to make lower prices on certain items to Growers, Dealers or Jobbers.**

**REMEMBER** in buying bulbs price is not everything. In fact sometimes price is a minor item. Consider the quality, count, the reliability of the grower, etc. I always mean to put in enough extra count or over size to make up for any lower price that other good reliable growers might make. **Just leave it to me.**

**IF YOU WANT TO PAY TRANSPORTATION** and get extra count on your order just mention it and I will send your order collect and will see that you are more than satisfied. Just mention whether you want extra count on your order or extras in other kinds and what kinds. If you want bulbs sent by mail it is better to have them go C.O.D., then we know the postage is correct and I will give you more than enough bulbs to make it up.

**ON FAIR SIZED ORDERS, EXPRESS** is safest and best especially in the winter time; I advise express if you are situated so as to get free delivery by the express company.

**EXTRAS.** It is the practice of most growers to give extras on orders. I always put in some myself. So it would help me if you will mention whether you want extras of the same varieties that you order or in other kinds. And if you have a preference it will help me still more if you can name the varieties in which you want your extras and if you want large, medium or small bulbs or bulblets. Just give us a list of varieties from which to select your extras. We will put in what we think the order rates.

## TWO NEW PALMER VARIETIES FREE

These varieties are not for sale this year at any price. They can be secured only by sending in cash orders.

**ROYAL YORK, Sdlg. No. 28293.** Deep salmon scarlet. Very large with heavy texture. This seedling won a prize offered by the Royal York Hotel in Toronto for the best seedling at the Canadian Exhibition. Many people have wanted to buy this variety but we have held it to work up a stock. A few bulbs were sent out last year in collections to see how the public would like it and the result has been most gratifying. This variety will be sold next year at probably not less than \$4.00 each for large bulbs. **A bulb of this variety will be given FREE only with orders of not less than \$15.00.**

**THE MOGUL. Sdlg. No. 28422.** Immense dark salmony maroon or to me the color is more of a brownish red. A magnificent variety opening up to eight at a time and holding its size well to the end. People who have seen this in my garden this past year have thought it wonderful. It is one of my favorites. I am sure you will like it. This variety is also not for sale and next year will be listed at not less than \$5.00 for large bulbs and no bulblets will be available next year either. Through a mistake the bulblets of this variety were not planted this past season but were destroyed. For that reason my stock is limited. **A bulb of this variety will be given FREE only with a cash order of \$30.00 or more.**

The past three years I have used the varieties **The Moor, Roxex** and **Mywag** as premium bulbs. These have all proven to be top-notch varieties and I am sure that the two that I am using this year as premium bulbs will prove just as good as those I have given in the past. Get your orders in early to secure these bulbs.

## PRICE LIST

	Per	Large	Medium	Small	BULBLET Per	
<b>ACADIA</b> .....	1	.....	.15	.10	20	.25
Geranium pink. Choice color.	10	.....	1.20	.80	100	1.00
<b>AFLAME</b> .....		2-.12	4-.15	10-.15	Pa.	.10
Huge begonia rose.	10	.50	.30	.15	.....	.....
<b>AIDA</b> .....		2-.12	4-.15	10-.15	Pa.	.10
Early deep blue.	10	.50	.30	.15	.....	.....
<b>ALAYNE</b> , \$5.00 each for large. A small bulb free with each large one.						
<b>ALBATROSS</b> .....		2-.15	2-10	5-.15	25	.10
Large pure white.	10	.60	.40	.25	100	.30
<b>ALLEGRO</b> .....	1	3.00	2.00	.....	.....	.....
New light blue.						
<b>ALLEMANIA</b> .....	1	3.00	2.00	1.20	1	.25
New red.						
<b>AL SMITH</b> .....		2-.15	2-.10	5-.15	25	.10
Very early pink.	10	.60	.40	.25	100	.30
<b>AMADOR</b> .....	1	.15	.10	2-.15	15	.20
Large glowing red.	10	1.20	.80	.60	100	1.20
<b>AMBERGLOW</b> , <b>AMBROSIA</b> .....		\$5.00 each for any size.				
Distinctive old rose shade.	10	2-.12	4-.15	10-.15	Pa.	.10
		.50	.30	.15	.....	.....
<b>ANGELUS</b> , <b>ANTIONE</b> .....		\$5.00 each for any size.				
Early deep yellow.	10	2-.12	4-.15	10-.15	Pa.	.10
		.50	.30	.15	.....	.....
<b>APRICOT GLOW</b> .....		.....	4-.15	10-.15	Pa.	.10
Early Apricot.	10	.....	.30	.15	100	.15
<b>AVE MARIA</b> .....		2-.12	4-.15	10-.15	Pa.	.10
Tall medium blue, fine.	10	.50	.30	.15	100	.15
<b>BAGDAD</b> .....		2-.15	2-10	6-.15	Pa.	.10
Huge smoky old rose.	10	.60	.40	.20	100	.20
<b>BEACON</b> .....	1	4.00	3.00	2.00	.....	.....
Salmon with large cream blotch.						
<b>BELLA DONNA</b> .....	1	.60	.40	.30	.....	.....
New early light blue.						
<b>BENEDICT</b> .....	1	.50	.30	.....	.....	.....
Rich deep rose.						
<b>BERTY SNOW</b> .....		2-.12	4-.15	10-.15	Pa.	.10
Exhibition and commercial lavender.	10	.50	.30	.15	.....	.....
<b>BETSY BOB-UP</b> .....	1	\$1.00	.....	.....	.....	.....
<b>BETTY COED</b> .....		2-.15	2-10	3-10	20	.25
Soft creamy pink.	10	.60	.40	.25	100	.80
<b>BETTY NUTHALL</b> .....		2-.12	4-.15	10-.15	Pa.	.10
Salmon, orange throat. Fine commercial.	10	.50	.30	.15	100	.15
<b>BILL SOWDEN</b> .....		2-.15	2-10	5-.15	25	.10
Large deep blood red.	10	.60	.40	.25	100	.30
<b>BLEEDING HEART</b> .....		2-.15	2-10	5-.15	25	.10
White tinted pink, big red blotch.	10	.60	.40	.25	100	.30
<b>BLUE ADMIRAL</b> .....	1	.60	.35	.....	5	.20
Tall dark blue New.	10	4.80	2.80	.....	.....	.....

	Per	Large	Medium	Small	BULBLETS	
					Per	
<b>BLUE DANUBE</b> .....		2-.15	2-.10	5-.15	25	.10
Strong growing light blue.	10	.60	.40	.25	100	.30
<b>BLUSHES OF CREAM</b> .....	1	.15	.10	2-.10	15	.10
Cream pink.	10	1.20	.80	.40	.....	.....
<b>BLUE TRIUMPHATOR</b> .....	1	.10	2-.15	.....	.....	.....
<b>BONNY SCOTLAND</b> .....	1	.25	.15	.....	.....	.....
<b>BRIGHTSIDE</b> .....	1	.15	.10	.....	.....	.....
<b>BULLFINCH</b> .....	1	1.00	.75	.....	.....	.....
Orange overlaid slate.						
<b>CAMELOT</b> .....	1	.10	2-.15	.....	10	.15
Coral pink, scarlet blotch. Several open.	10	.80	.60	.....	100	1.00
<b>CARDINAL PRINCE</b> .....		2-.12	4-.15	10-.15	Pa.	.10
Exhibition red.	10	.50	.30	.15	.....	.....
<b>CAROLUS CLUSIUS</b> .....		2-.12	4-.15	10-.15	Pa.	.10
Early deep shrimp pink.	10	.50	.30	.15	.....	.....
<b>CASSANDRA</b> .....	1	.....	.10	2-.15	15	.10
Pink, large red blotch. Exhibition type.	10	.....	.80	.50	100	.50
<b>CHAMPLAIN</b> .....	1	.60	.40	.25	7	.50
Very early light blue. Healthy. A coming commercial.	10	4.80	3.20	2.00	100	6.00
<b>CHAS. DICKENS</b> .....		2-.12	4-.15	10-.15	Pa.	.10
Best low priced clear purple.	10	.50	.30	.15	100	.20
<b>CHEROKEE</b> .....	1	2.00	1.50	1.00	2	.25
Very early large blotched pink.						
<b>CLARION</b> .....	1	.10	2-.15	3-.15	25	.10
Very early yellow. Good.	10	.80	.60	.40	.....	.....
<b>COMMANDER KOEHL</b> .....		2-.15	2-.10	4-.15	25	.10
Very large deep blood red.	10	.60	.40	.25	100	.30
<b>CONSTANCY</b> .....	1	.10	2-.15	3-.15	25	.10
Lavender rose.	10	.80	.60	.40	100	.25
<b>COQUETTE</b> , 25 cents any size.						
<b>CORONATION</b> .....	1	.20	.10	2-.12	12	.15
Beautiful salmon cream throat.	10	1.60	.80	.50	25	.25
<b>CRIMSON GLOW</b> .....		2-.12	4-.15	10-.15	Pa.	.10
Good medium red.	10	.50	.30	.15	.....	.....
<b>DEBONAIR</b> .....	1	.20	.10	2-.12	12	.15
LaFrance pink, cream throat. Very tall and straight.	10	1.60	.80	.50	25	.25
<b>DESDEMONE</b> .....	1	.10	2-.15	.....	.....	.....
Smoky purple, cream throat.	10	.80	.60	.....	.....	.....
<b>DOMINUS</b> .....		.....	4-.15	10-.15	Pa.	.10
Purplish red.	10	.....	.30	.15	.....	.....
<b>DORCAS ALDRICH</b> .....		2-.12	4-.15	.....	Pa.	.10
Smoky rose, strong. Popular.	10	.50	.30	.....	.....	.....
<b>DR. BENNETT</b> .....		2-.12	4-.15	10-.15	Pa.	.10
Most popular light scarlet.	10	.50	.30	.15	100	.20
<b>DR. DURR</b> .....	1	.15	.10	2-.15	15	.15
Large white, cream throat. Early	10	1.20	.80	.60	100	.70
<b>DREAM O'BEAUTY</b> .....	1	.10	2-.15	.....	.....	.....
<b>DR. L. H. BAILEY</b> .....	1	.15	.10	2-.15	15	.15
Velvety rose. Beautiful.	10	1.20	.80	.60	100	.70
<b>DR. MOODY</b> .....		2-.12	4-.15	10-.15	Pa.	.10
Early large lavender.	10	.50	.30	.15	100	.15
<b>DR. NELSON SHOOK</b> .....		2-.12	4-.15	10-.15	Pa.	.10
Large deep rose.	10	.50	.30	.15	100	.15
<b>DR. HOEG</b> .....	1	.....	.15	.....	.....	.....
<b>DUNA</b> .....	1	.20	.10	2-.12	12	.15
Beautiful soft light pinky buff.	10	1.60	.80	.50	25	.25
<b>EARLY DAWN</b> .....	1	.20	2-.25	2-.15	20	.15
New tall early rose.	10	1.60	1.00	.50	100	1.00
<b>EARLY MELODY</b> .....	1	.15	2-.15	3-.10	25	.10
Light lavender pink. Strong grower.	10	1.00	.50	.25	100	.30
<b>ECSTASY</b> .....		2-.12	4-.15	10-.15	Pa.	.10
Deep red, large blotches.	10	.50	.30	.15	.....	.....



	Per	Large	Medium	Small	BULBLETS	
					Per	
<b>EDITH MASON</b> .....		2-.12	4-.15	10-.15	Pa.	.10
Large light pink. Good.	10	.50	.30	.15		
<b>EDITH ROBSON</b> .....	1	.20	.12	.10	15	.20
Salmon, red blotch. Very tall and strong.	10	1.60	1.00	.70	100	1.00
<b>ELLA MAY</b> .....	1	.25	.25			
<b>EMILE AUBRUN</b> .....		2-.12	4-.15	10-.15	Pa.	.10
Smoky bronze, large red blotch.	10	.50	.30	.15		
<b>EMMA</b> .....		2-.12	4-.15	10-.15	Pa.	.10
Exhibition rose, large darker blotch.	10	.50	.30	.15	100	.15
<b>ESCORT</b> .....	1	.30	.20		10	.35
Earliest white.	10	2.40	1.60			
<b>EVENSONG</b> .....	1	.25	.20	.15	10	.15
Smoky, cream blotch.	10	2.00	1.60	1.20	100	1.20
<b>EXCELLENCE</b> .....		2-.12	4-.15	10-.15	Pa.	.10
Large very early scarlet.	10	.50	.30	.15	100	.25
<b>GATE OF HEAVEN</b> .....	1	.25	.15	.10	10	.25
Fine ruffled rich yellow.	10	2.00	1.20	.80	100	2.00
<b>GAY HUSSAR</b> .....		2-.12	4-.15	10-.15	Pa.	.10
Salmon orange.	10	.50	.30	.15		
<b>GIANT NYMPH</b> .....		2-.12	4-.15	10-.15	Pa.	.10
Good commercial pink.	10	.50	.30	.15		
<b>GLADYS CLEGG,</b>		\$1.00	any size.			
<b>GLORIANA</b> .....		2-.12	4-.15	10-.15	Pa.	.10
Golden salmon, yellow throat.	10	.50	.30	.15		
<b>GOLDEN ANNIVERSARY</b> .....	1	.15	.10	2-.15	15	.15
Cream yellow and pink.	10	1.20	.80	.60	100	.70
<b>GOLDEN BROWN</b> .....		2-.12	4-.15	10-.15	Pa.	.10
The name describes it. Very distinct.	10	.50	.30	.15		
<b>GOLDEN CUP</b> .....	1	.15	.10	2-.15	15	.15
Large clear deep yellow.	10	1.20	.80	.60	100	.70
<b>GOLDEN FLAME</b> .....	1	.50	.30	.25	10	.25
Salmon red, yellow throat.						
<b>GOLDEN GODDESS</b> .....	1	2.50				
<b>GRAND SLAM</b> .....		2-.15	2-.10	3-.10		
Light orange.	10	.60	.40	.30		
<b>HEATHFIELD</b> .....	1	.25	.20	.15		
Red, purple blotch.						
<b>HECTOR</b> .....	1	1.00				
<b>HELEN JACOBS</b> .....		2-.12	4-.15	10-.15	Pa.	.10
Light rose, cream throat.	10	.50	.30	.15		
<b>HELEN WILLS</b> .....			4-.15	10-.15	Pa.	.10
Cream white.	10		.30	.15		
<b>HERCULES</b> .....	1	.75	.50	.30	5	.20
Large buff.						
<b>HERITAGE</b> .....	1	.80	.70		1	.15
Exhibition pink.						
<b>HILLBILLY</b> .....	1	.35	.25			
Rose-doree, purple, yellow, red.						
<b>HONOR</b> .....	1	2.00	1.00			
<b>INCENSE</b> .....	1	2.00				
<b>INNOVATION</b> .....	1	1.00	1.00			
<b>INSPIRATION</b> .....	1		.12	.10	10	.25
Ruffled rose salmon.	10		1.00	.80	100	2.00
<b>JALNA,</b>		\$5.00	any size.			
<b>JANET</b> .....		2-.12	4-.15	10-.15	Pa.	.10
Smoky old rose, shaded peach rose.	10	.50	.30	.15		
<b>JOAN PETY</b> .....	1	4.00	2.00			
<b>J. S. BACH</b> .....	1	.80	.50			
Exhibition salmon rose. Very fine.						
<b>JONQUIL</b> .....	1	1.75	1.25	.80	3	.50
New deepest yellow known.	10	12.00	8.00	5.00	100	10.00
<b>J. VAN TETS</b> .....	1	.15	2-.15			
Large white.						

	Per	Large	Medium	Small	BULBLETS	
					Per	
<b>KING ARTHUR</b> .....	1	.25	.15	.10	20	.25
Very large rosy lavender.	10	2.00	1.20	.80	100	1.00
<b>KING GEORGE</b> .....		2-.12	4-.15	10-.15	Pa.	.10
Exhibition red, white blotch.	10	.50	.30	.15	...	...
<b>KING OF REDS</b> .....		2-.12	4-.15	10-.15	Pa.	.10
Nice bright red.	10	.50	.30	.15	...	...
<b>LADY EATON</b> .....	1	.80	.50	.35	2	.25
Large light pink, white throat.						
<b>LADY WINSOME</b> .....	1	.30	.20	.15	5	.15
Very large rosy salmon.						
<b>LA FIESTA</b> .....	1	2.50	1.50	1.00	...	...
Fine new orange.						
<b>LA PALOMA</b> .....		2-.12	4-.15	10-.15	Pa.	.10
Early orange.	10	.50	.30	.15	...	...
<b>LAUGHING WATER</b> .....		2-.12	4-.15	10-.15	Pa.	.10
Fine dark salmon.	10	.50	.30	.15	...	...
<b>LAVENDER BRIDE</b> .....		2-.12	4-.15	10-.15	Pa.	.10
Smoky lavender rose.	10	.50	.30	.15	...	...
<b>LEANDER</b> .....	1	.20	.15	.10	15	.20
Orange salmon, magenta blotch.						
<b>LESCHI</b> .....	1	.50	.50	....	...	...
<b>LINDESTA</b> .....	1	.25	.15	.10	15	.25
Tall salmony rose. Fine.	10	2.00	1.20	.80	100	1.00
<b>LITTLEJOHN</b> .....		2-.12	4-.15	10-.15	Pa.	.10
Rose pink, lighter throat.	10	.50	.30	.15	...	...
<b>LOTUS</b> .....	1	.10	2-.15	2-.10	10	.20
Cream pink.	10	.80	.60	.40	...	...
<b>LOYALTY</b> .....		2-.12	4-.15	10-.15	Pa.	.10
Fine deep yellow.	10	.50	.30	.15	...	...
<b>LUCIFER</b> .....	1	.15	.10	2-.15	10	.15
Exhibition orange, dark blotch.	10	1.25	.75	.50	100	1.00
<b>MAGNA BLANCA</b> .....		2-.12	4-.15	10-.15	Pa.	.10
Very tall white, cream throat.	10	.50	.30	.15	...	...
<b>MAID OF ORLEANS</b> .....	1	.12	2-.15	3-.15	20	.25
The coming commercial white.	10	.90	.60	.40	100	1.00
<b>MAMMOTH WHITE</b> .....		2-.15	3-.15	5-.10	25	.10
Huge white. Very popular.	10	.60	.40	.20	100	.25
<b>MARGARET FULTON</b> .....		2-.15	3-.15	5-.10	25	.10
Beautiful clear rose salmon.	10	.60	.30	.20	100	.25
<b>MARGARET PETER</b> .....	1	.25	.20	....	...	...
Early white, red blotch.	10	2.00	1.60	....	...	...
<b>MARION LOUISE</b> .....	1	.20	.15	.10	10	.15
Early white.						
<b>MARMORA</b> .....		2-.12	4-.15	10-.15	Pa.	.10
Large gray, purple blotch.	10	.50	.30	.15	...	...
<b>MARY ELIZABETH</b> .....	1	.25	.20	.10	15	.20
Ruffled white, cream throat.	10	2.00	1.60	.80	100	1.00
<b>MARY FREY</b> .....		2-.12	4-.15	10-.15	Pa.	.10
Nice early lavender.	10	.50	.30	.15	...	...
<b>MAUNGA</b> .....		Withdrawn for increase.				
Immense white.						
<b>MAUVE MAGIC</b> .....	1	.10	2-.15	3-.15	25	.10
Nice mauve shade.	10	.80	.60	.40	100	.25
<b>MAY DAVIDSON</b> .....	1	.50	.35	.25	5	.20
Pink, grayish cast.						
<b>MIBLOOM</b> .....		2-.12	4-.15	10-.15	Pa.	.10
Very early white, scarlet blotch.	10	.50	.30	.15	...	...
<b>MIGNON</b> .....	1	.75	.50	.25	5	.25
Pink with white center.						
<b>MILDRED LOUISE</b> .....	1	.20	.12	2-.15	10	.25
Strawberry pink.	10	1.60	1.00	.60	100	2.00

	Per	Large	Medium	Small	BULBLETS Per	
<b>MILFORD</b> .....	1	1.50	1.00	70		
New exhibition light blue.						
<b>MINUET</b> .....		2-.12	4-.15	....	....	....
Very fine lavender.	10	.50	.30	....	....	....
<b>MISS BLOOMINGTON</b> .....		2-.12	4-.15	10-.15	Pa.	.10
Earliest good yellow.	10	.50	.30	.15	....	....
<b>MISS GREELEY</b> .....		2-.16	.10	3-.10	....	....
Very like W. H. Phipps but three weeks earlier.	10	.66	.44	.28	....	....
<b>MISS NEW ZEALAND</b> .....	1	3.50	2.75	....	3	1.00
Immense pink						
<b>MOONDARA</b> .....	1	.25	.20	.15	10	.25
Deep salmon, darker blotch	10	2.00	1.60	1.20	100	2.00
<b>MOORISH KING</b> .....	1	.25	.20	....	....	....
Deep red.						
<b>MOROCCO</b> .....		....	4-.15	10-.15	Pa.	.10
Deep red, fine.	10	....	.30	.15	....	....
<b>MOTHER MACHREE</b> .....	1	.10	2-.10	3-.10	50	.10
Smoky lavender tinged salmon.	10	.60	.40	.20	100	.15
<b>MR. WM. CUTHBERTSON</b> .....	1	.15	.10	2-.10	....	....
Rose with cream throat.	10	1.20	.80	.40	....	....
<b>MRS. CHARLES A. STEVENS</b> .....	1	.20	.15	.10	15	.10
Mallow purple flaked darker.	10	1.60	1.20	.80	....	....
<b>MRS. E. J. HEATON</b> .....	1	.75	.50	.30	10	.50
	10	6.00	4.00	2.50	....	....
<b>MRS. F. E. BENNETT</b> .....		2-.12	4-.15	10-.15	Pa.	.10
White, purple feather. Good	10	.50	.30	.15	....	....
<b>MRS. GALBRAITH</b> .....		2-.12	4-.15	10-.15	Pa.	.10
Large rose.	10	.50	.30	.15	....	....
<b>MRS. GERTRUDE PFITZER</b> .....		2-.12	4-.15	10-.15	Pa.	.10
Medium blue. Strong grower.	10	.50	.30	.15	....	....
<b>MRS. G. WADE</b> .....	1	....	....	2.00	....	....
Yellow, many open.						
<b>MRS. LEON DOUGLAS</b> .....		2-.12	4-.15	10-.15	Pa.	.10
Very large salmon.	10	.50	.30	.15	....	....
<b>MRS. P. W. SISSON</b> .....		2-.12	4-.15	10-.15	Pa.	.10
Fine light pink.	10	.50	.30	.15	....	....
<b>MRS. S. A. ERREY</b> .....		2-.12	4-.15	10-.15	Pa.	.10
Exhibition salmon orange	10	.50	.30	.15	....	....
<b>MRS. T. E. LANGFORD</b> .....	1	.15	.10	....	15	.15
Peaches and cream.	10	1.20	.80	....	100	.70
<b>MYWAG</b> .....	1	4.00	3.00	2.00	1	.35
Wonder blotched salmon.						
<b>NANCY ANN</b> .....	1	4.00	2.00	....	....	....
<b>NERISSA</b> .....	1	.20	.15	.10	25	.15
Large salmon pink, scarlet blotch.	10	1.60	1.20	.80	100	.50
<b>NETHERLAND PRINCE</b> .....	1	.15	.10	2-.15	15	.15
Giant salmon pink. Good.	10	1.20	.80	.60	100	.70
<b>NYORA</b> .....	1	.15	.10	2-.15	15	.15
Exhibition salmon, dark blotch.	10	1.20	.80	.60	100	.70
<b>ODALISQUE</b> .....	1	....	.20	.15	....	....
White scarlet blotch. Fine.	10	....	1.60	1.20	....	....
<b>ORANGE BUTTERFLY</b> .....		2-.12	4-.15	10-.15	Pa.	.10
Orange prim.	10	.50	.30	.15	....	....
<b>ORANGE LADY</b> .....	1	.20	.15	....	....	....
Light orange suffused pink.	10	1.60	1.20	....	....	....
<b>ORANGE PRINCESS</b> .....	1	.25	.20	.15	20	.25
Salmon orange.	10	....	1.60	1.20	....	....
<b>ORANGE QUEEN</b> .....		2-.12	4-.15	10-.15	Pa.	.10
Good cut flower orange.	10	.50	.30	.15	....	....
<b>ORANGE SOVEREIGN</b> .....	1	.25	.20	.15	....	....
Fine orange	10	2.00	1.60	1.20	....	....

	Per	Large	Medium	Small	BULBLETS Per
<b>ORANGE WONDER</b> .....					
	10	.....	4-.15	.....	Pa. .10
<b>ORLANDO</b> .....	1	.30	.30	.....	.....
Rosy salmon.			.25	.....	.....
<b>OUR SELECTION</b> .....		2-.12	4-.15	10-.15	Pa. .10
Exhibition salmon flaked darker.	10	.50	.30	.15	.....
<b>PAUL PFITZER</b> .....		2-.12	4-.15	10-.15	Pa. .10
Early deep reddish purple.	10	.50	.30	.15	.....
<b>PEARL OF CALIFORNIA</b> .....		2-.12	4-.15	10-.15	Pa. .10
LaFrance pink, white throat.	10	.50	.30	.15	.....
<b>PEERLESS PINK</b> .....	1	.30	.20	.....	.....
Deep salmon.					
<b>PELEGRINA</b> .....	1	.15	.10	2-.15	20 .25
Best deep blue.	10	1.20	.80	.60	100 .80
<b>PFITZER'S TRIUMPH</b> .....		2-.12	4-.15	10-.15	Pa. .10
Giant reddish salmon orange.	10	.50	.30	.15	.....
<b>PHILIP BREITMEYER</b> .....		2-.12	4-.15	10-.15	Pa. .10
Dark lavender rose.	10	.50	.30	.15	.....
<b>PHILOMELA</b> .....	1	.20	.15	.....	.....
Salmon, flaked orange scarlet. Cream blotch.	10	1.60	1.20	.....	.....
<b>PHYLLIS McQUISTON</b> .....	1	1.00	.60	.35	3 .20
	10	8.00	4.80	2.80	25 1.00
<b>PICARDY</b> .....		2-.12	4-.15	5-.10	50 .10
Sensational new salmon.	10	.50	.30	.15	100 .15
<b>PINNACLE</b> .....	1	.65	.40	.20	4 .15
Tall exhibition rose pink	10	5.00	3.00	1.50	10 .30
<b>PIRATE</b> .....	1	.15	.10	2-.15	20 .25
Fine deep purplish rose red.	10	1.20	.80	.60	100 1.00
<b>POLAR ICE</b> .....	1	.25	.18	.....	10 .15
Tall straight white, several open.	10	2.20	1.60	.....	.....
<b>POND LILY</b> .....		2-.12	4-.15	10-.15	Pa. .10
Deep rose self color.	10	.50	.30	.15	.....
<b>PRAIRIE GOLD</b> .....	1	5.00	5.00	.....	.....
Tall, dark yellow					
<b>PREMIER HENRY</b> .....	1	1.00	.60	.45	2 .25
Immense ruffled geranium pink.	10	8.00	4.80	3.60	.....
<b>PRIDE OF WANAKAH</b> .....		2-.12	4-.15	10-.15	Pa. .10
Deep lavender rose.	10	.50	.30	.15	.....
<b>PRIMROSE PRINCESS</b> .....		2-.12	4-.15	10-.15	Pa. .10
Large light yellow.	10	.50	.30	.15	.....
<b>PRINCESS YAADA</b> .....	1	.20	.15	.....	.....
Apricot tinted pink.	10	1.60	1.20	.....	.....
<b>PROF. V. SLOOTEREN</b> .....		2-.15	2-.10	3-10	20 .15
Beautiful soft pink.	10	.60	.40	.25	.....
<b>PURPLE GLORY</b> .....		2-.12	4-.15	.....	Pa. .10
Ruffled maroon.	10	.50	.30	.....	.....
<b>QUEEN HELEN II</b> .....	1	.15	.10	2-.15	15 .15
Bright pink, yellow blotch.	10	1.20	.80	.60	100 .70
<b>RAMASSES</b> .....	1	.10	2-.12	3-10	25 .10
Large tall ruffled purple.	10	.80	.50	.25	100 .35
<b>RAPTURE</b> .....	1	.12	2-.15	2-10	10 .15
Tall late salmon, creamy blotch.	10	1.00	.60	.40	100 1.00
<b>RED LORY</b> .....	1	.15	.10	2-.15	10 .15
Exhibition red, purplish blotch.	10	1.20	.80	.60	100 1.00
<b>RED PHIPPS</b> .....		2-.16	2-.10	3-10	.....
Light red. Similar to Phipps in growth.	10	.66	.44	.28	.....
<b>RED SPLENDOR</b> .....		2-.12	4-.15	10-.15	Pa. .10
Light red	10	.50	.30	.15	.....
<b>REGENT</b> ,		\$5.00	any size.		
<b>REVERIE</b> .....	1	1.25	.90	.60	2 .25
Light pink and cream	10	10.00	7.00	4.50	100 10.00
<b>RIDEAU</b> .....	1	.12	2-.12	3-.12	25 .15
Smoky salmon. Several open.	10	1.00	.50	.30	100 .60

	Per	Large	Medium	Small	BULBLETS Per	
<b>RODERICK DHU</b> .....	1	.10	2-.15	2-.10	25	.10
Immense ruffled pink.	10	.80	.60	.40	100	.30
<b>ROI ALBERT</b> .....		2-.12	4-.15	10-.15	Pa.	.10
Beautiful smoky rose.	10	.50	.30	.15		
<b>ROI SOLEIL</b> .....		2-.12	4-.15	10-.15	Pa.	.10
Early large yellow.	10	.50	.30	.15		
<b>ROSE MARIE PFITZER</b> .....	1	....	.35	....		
Exhibition peaches and cream.						
<b>ROSE MIST</b> .....		2-.12	4-.15	10-.15	Pa.	.10
Old rose bordered buff.	10	.50	.30	.15		
<b>ROSE STANDISH</b> .....	1	.50	.35	....		
New light rose pink.	10	4.00	3.00	....		
<b>ROSE WINGS</b> .....	1	.30	.20	....		
Deep rose; decorative.						
<b>ROSEX</b> .....	1	2.00	1.00	....		
Salmon scarlet shading to rose. 8-10 open.						
<b>ROYAL YORK</b> . Premium bulb. See page 2.						
<b>RUSTY</b> .....	1	.75	.35	....		
<b>SAHARA</b> .....	1	5.00	4.00	3.00		
New light brown.						
<b>SALBACH'S ORCHID</b> .....		2-.16	2-.10	....		
Pink orchid shade.	10	.70	.40	....		
<b>SALBACH'S PINK</b> .....		2-.15	2-.10	6-.15	Pa.	.10
Geranium pink.	10	.60	.40	.20	100	.20
<b>SALMON EMPEROR</b> .....	1	.25	.20	....		
Ruffled salmon orange.						
<b>SARABAND</b> .....		2-.12	4-.15	10-.15	Pa.	.10
Deep mulberry, cream blotch.	10	.50	.30	.15		
<b>SCARLET BEDDER</b> .....		2-.12	4-.15	10-.15	Pa.	.10
Fiery scarlet.	10	.50	.30	.15		
<b>SCARLET WONDER</b> .....		2-.12	4-.15	10-.15	Pa.	.10
Huge red.	10	.50	.30	.15		
<b>SCHUBERT</b> .....	1	.15	.10	2-.15	15	.15
Cream, yellow blotches.	10	1.20	.80	.60	100	.70
<b>SCHWABEN GIRL</b> .....	1	.15	.10	....		
Pure pink.	10	1.20	.80	....		
<b>SEÑORITA</b> .....		....	4-.15	10-.15	Pa.	.10
Large showy red and yellow.	10	....	.30	.15		
<b>SILVER SHEEN</b> .....	1	.25	.15	.10	5	.20
Exhibition pink.	10	2.00	1.20	.80		
<b>SMILING MAESTRO</b> .....	1	.75	.50	.30	5	.20
Deep salmon rose, flaked brown.	10	6.40	4.40	2.40		
<b>SO BIG</b> .....	1	8.00	4.00	....		
<b>SOLVEIG</b> .....	1	1.50	1.00	.50	3	.25
Ruffled white, small pink blotch.	10	10.00	6.00	4.00	10	.75
<b>SONATINE</b> .....	1	1.00	.60	....	4	.25
Light pink, small red blotches.						
<b>SPIRIT OF ST. LOUIS</b> .....		2-.12	4-.15	10-.15	Pa.	.10
Orange buff.	10	.50	.30	.15		
<b>SPRAY OF GOLD</b> .....		2-.15	2-.10	4-.10	25	.10
Early deep clear yellow.	10	.60	.30	.20	100	.30
<b>STAR OF BETHLEHEM</b> .....	1	.50	.35	.25	3	.25
Immense show white.	10	4.00	2.80	....		
<b>STAR PRINCE</b> .....	1	.75	.50	.35		
Huge light pink.						
<b>STUTTGARDIA</b> .....		2-.12	4-.15	....	Pa.	.10
Large fiery orange red.	10	.50	.30	....		
<b>SULTAN</b> .....	1	.15	.10	2-.15	25	.25
Large velvety rose red.	10	1.20	.80	.60	100	.75
<b>SUNSET CLOUD</b> .....	1	.20	.15	....		
White shaded pink.	10	1.60	1.20	....		
<b>SUNSHINE GIRL</b> .....		2-.12	4-.15	10-.15	Pa.	.10
Early clear geranium pink.	10	.50	.30	.15		

	Per	Large	Medium	Small	BULBLETS Per	
<b>SUNSHINE SUSIE</b> .....	1	.20	.15	.....	.....	.....
Very early orange, tinted pink.	10	1.60	1.20	.....	.....	.....
<b>SYMPHONY</b> .....	1	.20	.15	.10	15	.20
Light pink.	10	1.60	1.20	.80	100	1.00
<b>TAKINA</b> .....	1	4.00	2.50	2.00	.....	.....
Huge purple.						
<b>TERESA</b> .....	1	.25	.15	.10	25	.20
Exhibition yellowish pink.						
<b>THE MOGUL</b> . Premium bulb. See page 2.						
<b>THE MOOR</b> .....	1	.80	.50	.30	3	.20
Deep rose red. Opens 8 at a time.						
<b>THE ORCHID</b> .....		.....	4-.15	10-.15	Pa.	.10
Orchid colored prim.	10	.....	.30	.15	.....	.....
<b>TIGER</b> .....		2-.12	.....	10-.15	Pa.	.10
Smoky red flaked blue.	10	.50	.....	.15	.....	.....
<b>TIGER KING</b> .....	1	.15	.10	2-.15	15	.10
Dark maroon flaked darker.	10	1.20	.80	.60	.....	.....
<b>TOBERSUN</b> .....		2-.12	4-.15	10-.15	Pa.	.10
Fine late yellow.	10	.50	.30	.15	.....	.....
<b>TROUBADOUR</b> .....		2-.12	4-.15	10-.15	Pa.	.10
Best clear purple	10	.50	.30	.15	.....	.....
<b>VAGABOND PRINCE</b> .....	1	4.00	3.00	.....	.....	.....
Deep brown with flame blotch.						
<b>WASAGA</b> .....	1	.20	.10	2-.15	20	.25
Very beautiful buff.	10	1.60	.80	.50	100	1.00
<b>W. H. PHIPPS</b> .....		2-.12	4-.15	10-.15	Pa.	.10
Late show salmon.	10	.50	.30	.15	.....	.....
<b>WINGED VICTORY</b> .....		.....	4-.15	10-.15	Pa.	.10
Immense pink.	10	.....	.30	.15	.....	.....
<b>WURTEMBERGIA</b> .....	1	.12	2-.15	3-.15	25	.20
Dazzling large light red with cream throat.	10	1.00	.60	.40	100	.60
<b>YVONNE</b> .....		2-.12	4-.15	10-.15	Pa.	.10
Flesh color, pink blotch. Fine.	10	.50	.30	.15	.....	.....
<b>3 L O</b> .....	1	.....	.....	.50	.....	.....
Exhibition rose. darker blotch.						
<b>NUMBERED PALMER SEEDLINGS:</b>						
26892.....	1	.10	2-.15	4-.15	.....	.....
Salmon pink.						
26121.....	1	.15	.10	2-.15	.....	.....
Large salmon, yellow throat.						
BC25084.....	1	.10	2-.15	4-.15	.....	.....
Tall orange.						
26935.....	1	.25	.20	.....	.....	.....
Large pink similar to Rosex.						
26242.....	1	.15	.10	2-.15	.....	.....
Tall ruffled rose red.						
27271.....	1	.25	.20	.15	.....	.....
Huge red.						
26895.....	1	.....	.50	.30	.....	.....
Immense rich smoky.						
M7021.....	1	.25	.20	.15	.....	.....
Fine cerise, many open						
27694.....	1	.15	.10	.....	.....	.....
Ruffled needlepoint rose						
27585.....	1	.25	.20	.....	.....	.....
Salmony smoke or mulberry. Ruffled.						
H6141.....	1	.....	.15	.10	.....	.....
Early light pink.						

"Bill Sowden is liked by more people who see my Glads than any other of this color—even better than Com. Koehl.  
—F. R. CATES, N. C.

# Choice Bulbs and Bulblets at Prepaid Prices

In selecting from this list you may have 3 bulbs at the 10 rate. Also 25 of one kind and size for twice the price of 10. 25 bulblets at 100 rate.

If you want to pay express or parcel post just mention it and I will send them C.O.D. for carrying charges and will put in enough extra bulbs to much more than make it up.

	Per	No. 1	No. 2	No. 3	No. 4	No. 5	No. 6	BULBLETS	
ACADIA.....	1	.25	.20	.15	.12	.10	2-.15	20	.25
	10	2.00	1.60	1.20	.95	.80	.60	100	1.00
BLUE ADMIRAL.....	1	.75	.60	.45	.35	.....	.....	5	.20
	10	6.50	5.00	3.50	2.80	.....	.....	.....	.....
BULLFINCH.....	1	1.25	1.00	.....	.....	.....	.....	.....	.....
CHAMPLAIN.....	1	.80	.60	.50	.40	.30	.25	3	.25
	10	6.40	4.80	4.00	3.20	2.40	2.00	100	6.00
CORONATION.....	1	.25	.20	.15	.10	2-.15	2-.12	12	.15
	10	2.00	1.60	1.20	.80	.60	.50	25	.25
DEBONAIR.....	1	.25	.20	.15	.10	2-.15	2-.12	12	.15
	10	2.00	1.60	1.20	.80	.60	.50	25	.25
DUNA.....	1	.25	.20	.15	.10	2-.15	2-.12	12	.15
	10	2.00	1.60	1.20	.80	.60	.50	25	.25
EDITH ROBSON.....	1	.25	.20	.15	.12	.10	2-.15	15	.20
	10	2.00	1.60	1.20	1.00	.80	.60	100	1.00
ESCORT.....	1	.....	.30	.25	.20	.....	.....	10	.35
	10	.....	2.40	2.00	1.60	.....	.....	100	2.50
EVENSONG.....	1	.30	.25	.22	.20	.18	.15	10	.15
	10	2.40	2.00	1.80	1.60	1.40	1.20	100	1.20
HERCULES.....	1	.75	.60	.50	.40	.30	.25	5	.20
	10	6.00	5.00	4.00	3.20	2.40	2.00	.....	.....
JONQUIL.....	1	2.00	1.75	1.50	1.25	1.00	.80	3	.50
	10	15.00	12.00	9.00	7.00	6.00	4.00	100	10.00
KING ARTHUR.....	1	.30	.25	.20	.15	.12	.10	20	.25
	10	2.40	2.00	1.60	1.20	1.00	.80	100	1.00
LINDESTA.....	1	.30	.25	.20	.15	.12	.10	15	.20
	10	2.40	2.00	1.60	1.20	1.00	.80	100	1.00
MAID OF ORLEANS....	1	.15	.12	.10	2-.15	3-.15	.....	20	.25
	10	1.00	.90	.80	.60	.40	.....	100	1.00
MARION LOUISE.....	1	.25	.20	.18	.15	.12	.10	10	.15
	10	2.00	1.60	1.40	1.20	1.00	.80	100	1.00
MARY ELIZABETH.....	1	.25	.20	.15	.10	2-.15	3-.15	15	.20
	10	2.00	1.60	1.20	.80	.60	.40	100	1.00
MILDRED LOUISE.....	1	.25	.20	.15	.12	.10	2-.15	10	.25
	10	2.00	1.60	1.20	1.00	.80	.60	100	2.00
MILFORD.....	1	1.75	1.50	1.25	1.00	.80	.....	2	.25
	10	15.00	12.00	10.00	8.00	6.40	.....	4	.50
MOONDARA.....	1	.30	.25	.22	.20	.18	.15	10	.25
	10	2.40	2.00	1.80	1.60	1.40	1.20	100	2.00
MRS. E. J. HEATON....	1	1.00	.75	.60	.50	.40	.30	10	.50
	10	8.00	6.00	4.80	4.00	3.60	2.40	100	4.00
MRS. T. E. LANGFORD	1	.20	.15	.12	.10	.....	.....	15	.15
	10	1.60	1.20	1.00	.80	.....	.....	100	.70
MYWAG.....	1	4.50	4.00	3.50	3.00	2.50	2.00	3	1.00
NERISSA.....	1	.25	.20	.18	.15	.12	.10	25	.15
	10	2.00	1.60	1.40	1.20	1.00	.80	100	.50
PELEGRINA.....	1	.15	.12	.10	.08	2-.15	3-.15	20	.25
	10	1.20	1.00	.80	.70	.60	.50	100	.80
PHYLLIS McQUISTON..	1	1.00	.80	.70	.60	.50	.35	3	.20
	10	8.00	6.40	5.60	4.80	4.00	2.80	25	1.00
PINNACLE.....	1	.70	.65	.50	.40	.30	.20	4	.15
	10	5.60	5.00	4.00	3.00	2.00	1.50	10	.30
PREMIER HENRY.....	1	1.00	.80	.60	.50	.....	.....	2	.25
REVERIE.....	1	1.50	1.25	1.00	.90	.75	.60	2	.25
	10	12.00	10.00	8.00	7.00	6.00	4.50	100	10.00

	Per	No. 1	No. 2	No. 3	No. 4	No. 5	No. 6	BULBLETS	
SOLVEIG.....	1	2.00	1.50	1.25	1.00	.75	.50	3	.25
	10	16.00	12.00	10.00	8.00	6.00	4.00	10	.75
SYMPHONY.....	1	.25	.20	.18	.15	.12	.10	15	.20
	10	2.00	1.60	1.40	1.20	1.00	.80	100	1.00
THE MOOR.....	1	1.00	.80	.60	.50	.40	.30	3	.20
	10	8.00	6.40	4.80	4.00	3.20	2.40	10	.50

## Wholesale Prices, Not Prepaid

Prices listed are per 100.

Not listed are 25 bulbs of one kind and size at the 100 rate. 1,000 bulbs for 8 times the 100 price with not less than 250 of one kind or size at the 1,000 rate.

500 bulblets at 1,000 rate or one pint at quart rate.

	No. 1	No. 2	No. 3	No. 4	No. 5	No. 6	BULBLETS	
							1,000	Quart
ACADIA.....	.....	.....	8.00	6.00	4.00	2.50	8.00	.....
AFLAME.....	2.20	1.80	1.40	1.20	.80	.60	1.00	3.00
ALBATROSS.....	3.50	3.00	.....	1.80	1.20	.....	2.50	.....
AVE MARIA.....	2.50	2.00	1.60	1.20	1.00	.70	1.00	3.00
BAGDAD.....	4.00	3.00	2.00	1.60	1.20	1.00	1.00	4.50
BETTY NUTHALL.....	2.00	1.60	1.20	1.00	.80	.60	.75	2.00
BILL SOWDEN.....	4.00	3.20	2.40	2.00	1.60	1.20	2.50	8.00
BLEEDING HEART.....	3.00	2.40	1.80	1.50	1.00	.80	2.00	5.00
CONSTANCY.....	4.50	3.75	3.00	2.50	2.00	1.25	1.50	5.00
CORONATION.....	10.00	8.00	6.50	5.00	4.00	3.00	6.00	20.00
DEBONAIR.....	10.00	8.00	6.50	5.00	4.00	3.00	8.00	25.00
DR. MOODY.....	2.20	1.80	1.40	1.20	1.00	.70	1.00	3.00
DR. NELSON SHOOK.....	.....	1.60	1.20	.80	.70	.60	.75	2.00
DUNA.....	10.00	8.00	6.50	5.00	4.00	3.60	6.00	20.00
EDITH ROBSON.....	12.00	10.00	8.00	6.00	4.00	3.00	6.00	20.00
EMMA.....	.....	2.40	2.00	1.60	1.20	.....	1.00	2.50
ESCORT.....	.....	.....	12.00	10.00	.....	.....	.....	.....
EXCELLENCE.....	3.00	2.00	1.60	1.20	.90	.60	2.00	4.00
GIANT NYMPH.....	2.00	1.60	1.20	.90	.70	.50	.50	1.00
GOLDEN CUP.....	10.00	8.00	6.50	5.00	4.00	3.00	6.00	20.00
HELEN JACOBS.....	.....	2.40	1.80	1.20	.90	.60	1.00	2.50
JANET.....	2.80	2.20	1.80	1.40	1.20	.80	1.50	3.00
KING ARTHUR.....	16.00	12.00	10.00	.....	7.00	5.00	10.00	25.00
LA PALOMA.....	3.00	2.40	1.80	1.20	1.00	.70	1.00	3.00
LINDESTA.....	10.00	8.00	6.00	.....	.....	3.00	8.00	.....
LOYALTY.....	2.50	2.00	1.50	1.20	.90	.60	1.50	3.00
MARMORA.....	2.20	1.80	1.40	1.20	.90	.60	.75	2.00
MARY FREY.....	.....	.....	1.50	1.20	.80	.60	.75	.....
MIBLOOM.....	3.00	2.40	2.00	1.50	1.00	.70	1.50	3.00
MILDRED LOUISE.....	12.00	10.00	8.00	6.00	5.00	4.00	12.00	40.00
MISS BLOOMINGTON.....	3.00	2.40	1.80	1.20	.90	.60	2.00	5.00
MOTHER MACHREE.....	.....	3.20	2.00	1.60	1.20	1.00	1.00	3.50
MRS. P. W. SISSON.....	2.40	1.80	1.40	1.20	1.00	.60	1.00	2.00
MRS. T. E. LANGFORD.....	8.00	6.00	4.50	.....	.....	.....	.....	.....
ORANGE BUTTERFLY.....	3.00	2.50	2.00	1.50	1.20	.90	1.00	.....
ORANGE QUEEN.....	2.00	1.60	1.20	.90	.70	.50	.75	1.50
OUR SELECTION.....	.....	1.80	1.40	1.20	1.00	.80	1.00	3.00
PELEGRINA.....	8.00	6.00	4.00	3.00	2.00	1.50	8.00	20.00
PICARDY.....	3.00	2.40	1.60	1.20	.90	.70	1.00	2.00
PIRATE.....	.....	8.00	6.00	4.50	4.00	3.00	10.00	25.00



	No. 1	No. 2	No. 3	No. 4	No. 5	No. 6	BULBLETS	
							1,000	Quart
POND LILY.....	.....	2.50	2.00	1.50	1.00	.80	2.00	.....
PRIDE OF WANAKAH.....	.....	1.60	1.20	.80	.60	.40	.75	1.50
RAPTURE.....	8.00	6.00	4.00	3.20	2.40	1.80	6.00	20.00
REVERIE.....	80.00	60.00	40.00	35.00	30.00	25.00	60.00	.....
SCARLET BEDDER.....	2.00	1.60	1.20	.....	.....	.....	1.00	1.50
SPRAY OF GOLD.....	.....	2.40	2.00	1.60	1.20	.80	2.50	5.00
SULTAN.....	.....	8.40	6.80	6.00	4.00	.....	6.00	.....
SUNSHINE GIRL.....	2.00	1.60	1.20	1.00	.80	.60	1.00	.....
SYMPHONY.....	12.00	10.00	8.00	6.00	5.00	4.00	8.00	.....
TOBERSUN.....	2.50	2.00	1.60	1.20	.90	.60	1.50	3.00
TROUBADOUR.....	3.00	2.40	.....	1.40	1.00	.60	1.50	3.00
WASAGA.....	12.00	10.00	8.00	6.00	4.00	3.00	8.00	25.00
WURTEMBERGIA.....	9.00	7.00	5.40	4.20	3.80	3.00	5.00	15.00
YVONNE.....	.....	2.00	1.60	1.20	.90	.50	1.00	2.50

## Special Collections and Sets

I WILL DUPLICATE THE SPECIAL OFFERS OF ANY OTHER RELIABLE GROWER IF I HAVE THE STOCK

ALL COLLECTIONS PREPAID.

**No. 1. UNLABELED COLLECTION.** 100 assorted large bulbs (1 inch up) in at least 40 varieties in about every shade in gladiolus. I have sold this collection for years and have thousands of very well pleased customers. I positively guarantee there is not a better collection sold by any grower in the country for anywhere near the price. I get many repeat orders every year from well pleased customers. 100 for \$3.00; 50 for \$1.75; 25 for \$1.00 all prepaid. With each 100 bulbs of this collection I will put in 5 medium Picardy labeled, FREE. Also 1 large Reverie bulb worth \$1.25.

**No. 1A. SAME COLLECTION IN MEDIUM SIZE BULBS.** 100 bulbs for \$2.00. 50 for \$1.25. With 100 bulbs will give 5 medium Picardy free.

**No. 1B. SAME COLLECTION IN SMALL BULBS.** Same as above except the bulbs are small. They should all bloom but the blooms will not be quite so large as from large bulbs. Will make fine bulbs for another year. The biggest value in my catalog. If you don't get several dollars worth of pleasure out of this one dollar collection and have \$3.00 worth of bulbs in the fall I want to know about it. This is the size I plant myself. 100 Small Bulbs \$1.00. Not less than 100 sold.

**No. 2. UNLABELED COLLECTION.** 100 assorted as above containing 45 varieties or more including many of the newer and higher priced ones. A wonderful collection at a moderate price. 100 for \$5.00; 25 and 50 at the same rate.

**No. 3. UNLABELED COLLECTION DE LUXE.** 50 or more varieties many of them being exhibition sorts and worth several times the price asked. Real aristocrats in gladiolus. Nothing better to be had in an unlabeled collection. 100 for \$10.00; 25 and 50 at the same rate.

**NONE OF THE ABOVE COLLECTIONS ARE LABELED AS TO VARIETIES.** Don't ask us to give you the names of the varieties in the collections as we positively do not do it at these prices. If you want them labeled buy them under name. I guarantee the collections to be the best you can buy for the price.

**No. 4. BETTER TIMES COLLECTION.** Large bulbs \$3.00. All Labeled. A very fine collection for a beginner or anyone else. Splendid varieties in many types and colors ranging from white thru many shades of pink, red, orange, yellow, salmon, smoke, blue and lavender. You can't get started in good named varieties in a less expensive way than in getting this collection or one of the next five.

2 AIDA  
4 APRICOT GLOW  
3 BETTY NUTHALL  
3 BLEEDING HEART  
3 DUNA  
2 ECSTASY  
2 EMMA  
4 EXCELLENCE  
4 SPRAY OF GOLD

2 HELEN JACOBS  
4 JANET  
3 LA PALOMA  
2 LAUGHING WATER  
2 LOYALTY  
2 MAGNIFICENT  
2 MAMMOTH WHITE  
2 MARMORA  
2 MARY FREY

2 MRS. GALBRAITH  
2 OUR SELECTION  
2 PAUL PFITZER  
4 RED SPLENDOR  
3 RIDEAU  
2 SARABAND  
2 SENORITA  
4 SUNSHINE GIRL

No. 5. Same as above in **medium size bulbs for \$2.10.** Wonderful value.

No. 6. **\$3.00 LABELED COLLECTION.** Another fine assortment of varieties and colors. **Large bulbs.**

2 ACADIA	2 CONSTANCY	4 MISS BLOOMINGTON
2 AFLAME	3 DOMINUS	4 ORANGE BUTTERFLY
2 ALBATROSS	2 EMBLEM	2 PFITZER'S TRIUMPH
2 AMBROSIA	3 GIANT NYMPH	3 POND LILY
5 BAGDAD	2 GOLDEN ANNIVERSARY	3 RAPTURE
3 BILL SOWDEN	2 27271 Red Seedling	2 SALBACH'S PINK
3 BRIGHT WINGS	3 LITTLEJOHN	2 SCHUBERT
2 BROWN WINGS	2 HELEN WILLS	5 YVONNE
2 CASSANDRA	2 SEEDLING 27123, fine blue.	

No. 7. **\$2.00 LABELED COLLECTION.** Same as above in **medium size.**

No. 8. **\$3.00 LABELED COLLECTION.** Large bulbs. Another lot all different from the two previous sets.

2 BEAUTY FLOWER	2 EMILE AUBRUN	3 OCTOBER
3 BERTY SNOW	3 GAY HUSSAR	4 ORANGE QUEEN
2 BLUSHES OF CREAM	3 GLORIANA	3 PELEGRINA
2 CAROLUS CLUSIUS	3 LAVENDER ROSE	4 PRIDE OF WANAKAH
2 CATTLEYA ROSE	2 MIBLOOM	4 PRIMROSE PRINCESS
2 CHAS. DICKENS	4 MOROCCO	3 STUTTGARDIA
2 CORONATION	2 MOTHER MACHREE	2 SWORD OF MAHOMET
3 CRIMSON GLOW	2 MRS. SISSON	2 TOBERSUN
2 DR. DURR		2 TROUBADOUR

No. 9. **LABELED COLLECTION. \$2.10.** Same as above in **medium size.**

The above collections, No. 4, No. 6, and No. 8 are all different. Also of course the corresponding collections No. 5, No. 7, and No. 9. The whole three sets either of the large or medium ones will make a really wonderful collection and will make your garden the envy of your neighborhood.

Will sell the three sets, No. 4, No. 6 and No. 8, for **\$8.00.** Or sets No. 5, No. 7 and No. 9, for **\$5.25.**

With any one set No. 4 to No. 9 ordered and paid for before March 1, I will put in 5 **medium Picardy EXTRA.** Or if you order the three sets No. 4, No. 6 and No. 8, will put in a **large Rosex or Reverie FREE** in addition to the 5 medium Picardy. With sets No. 5, No. 7 and No. 9, will give a **medium The Moor or Jonquil.**

No. 10. **LABELED COLLECTION ENTIRELY DIFFERENT FROM THE PREVIOUS ONES, \$1.90.** One large bulb each of the following. 2 bulbs each for **\$3.40.**

BLUE DANUBE	LEANDER	NYORA
BLUSHES OF CREAM	KING ARTHUR	QUEEN HELEN II
COM. KOEHL	LINDESTA	RED LORY
EDITH MASON	MOONDARA	SULTAN
EDITH ROBSON	MRS. LANGFORD	WURTEMBERGIA
ESCORT	NERISSA	

No. 11. **LABELED COLLECTION. \$1.35.** One medium bulb each of the varieties in No. 10. 2 each for **\$2.50.**

No. 11A. **CONNOISSEUR'S COLLECTION.** 1 large each **The Moor, Pinnacle, Rose Standish, Smiling Maestro, Sonatine, Hercules** for **\$3.25.**

No. 11B. Same as above except **medium size for \$2.00.**

No. 12. **LABELED PALMER COLLECTION. \$1.50.** One large bulb each of the following varieties. 2 bulbs each for **\$2.75.**

ACADIA	DUNA	RAPTURE
BAGDAD	LEANDER	RIDEAU
CORONATION	LINDESTA	SPRAY OF GOLD
DEBONAIR	PICARDY	WASAGA
	PIRATE	

No. 13. **LABELED PALMER COLLECTION. \$1.50.** 2 medium bulbs each of the varieties in No. 12.

No. 14. **LABELED PALMER COLLECTION. \$1.75.** One large bulb each **Champlain, Lady Eaton and Premier Henry.**

No. 15. **LABELED PALMER COLLECTION. \$1.25.** One medium bulb each of varieties in No. 14.

**No. 16. LABELED PALMER COLLECTION. \$3.50.** One large bulb each **Jonquil, Reverie** and **Rosex**.

**No. 17. LABELED PALMER COLLECTION. \$2.25.** One medium bulb each of varieties in No. 16. 2 each for **\$4.00**.

**No. 18. LABELED PALMER COLLECTION. \$.75.** 2 selected bulblets each of varieties in No. 16.

**No. 19. PICARDY SPECIAL. \$1.00.** 3 large, 30 medium, 20 small. These Picardy collections have always been very popular.

**No. 20. PICARDY SPECIAL. \$2.00.** 5 large, 60 medium, 50 small, 100 bts.

**No. 21. PICARDY SPECIAL. \$3.00.** 30 large, 60 medium, 60 small, 400 bts.

**No. 22. PICARDY SPECIAL. \$5.00.** 12 No. 1, 35 No. 2, 50 No. 3, 50 No. 4, 60 No. 5, 70 No. 6, 800 bts. All for **\$5.00**.

**No. 23. BAGDAD SPECIALS.** 1 will duplicate the last four offers in **Bagdad**. This is very special as Bagdad is higher priced in the regular list than Picardy and is becoming increasingly popular all the time.

**No. 24. DUNA SPECIAL. \$1.00.** 3 large, 5 medium, 8 small.

**No. 25. RAPTURE SPECIAL. \$1.00.** 4 large, 8 medium, 10 small.

**No. 26. DEBONAIR SPECIAL. \$1.00.** 3 large, 5 medium, 8 small.

**No. 27. CORONATION SPECIAL. \$1.00.** 3 large, 5 medium, 8 small.

**No. 28. GOLDEN CUP SPECIAL. \$1.00.** 5 large, 5 medium, 10 small.

---

---

## COLLECTIONS BY COLOR

**No. 32. DARK BLUE.** 5 medium each, **Aida, Pelegrina**, 1 Large **Blue Admiral** for **70 cents**.

**No. 33. MEDIUM AND LIGHT BLUE.** 5 medium each **Ave Maria, Blue Danube**, 1 each medium **Bella Donna, Champlain** for **70 cents**.

**No. 34. DARK RED.** 5 each medium **Ecstasy, Morocco, Dominus**, 3 **Pirate** for **50 cents**.

**No. 35. MEDIUM RED.** 5 each medium **Bill Sowden, Com. Koehl**, 2 large **27271** for **60 cents**.

**No. 36. MEDIUM RED.** 5 each medium **Crimson Glow, Cardinal Prince, Red Splendor, King of Reds** for **45 cents**.

**No. 37. SCARLET.** 5 each medium **Excellence, Scarlet Bedder, Scarlet Wonder** and **Wurtembergia** for **55 cents**.

**No. 38. ORANGE.** 5 medium each **Gay Hussar, La Paloma, Orange Butterfly, Orange Queen, Spirit of St. Louis, Orange Wonder** for **65 cents**.

**No. 39. YELLOW.** 5 medium each **Loyalty, Primrose Princess, Spray of Gold, Tobersun**, 3 **Golden Cup** for **60 cents**.

**No. 40. PURPLE.** 5 medium each **Troubadour, Paul Pfitzer**, 3 large each **Chas. Dickens, Ramasses**, 3 medium **Mrs. Chas. A. Stevens** for **75 cents**.

**No. 41. LAVENDER.** 5 medium each **Berty Snow, Dr. Moody, Mary Frey, Philip Breitmeyer**, 3 **King Arthur** for **65 cents**.

**No. 42. ROSE PINK.** 5 medium each **Constancy, Dr. Shook, Littlejohn, Pond Lily, Janet** for **65 cents**.

**No. 43. ROSE PINK.** 5 medium each **Aflame, Bagdad, Dorcas Aldrich, October, seedling 27694** for **65 cents**.

**No. 44. SALMON PINK.** 5 medium each **Betty Nuthall, Gloriana, Laughing Water, Mrs. Leon Douglas, Our Selection** for **55 cents**.

No. 45. SALMON PINK. 5 medium Picardy, 3 Coronation, 4 Rapture, 2 each seedling 26892 and Acadia for 75 cents.

No. 46. LIGHT PINK. 5 medium each Carolus Clusius, Mrs. Sisson, Edith Mason, Pearl of California and 2 Debonair for 65 cents.

No. 47. PINK. 5 medium each Giant Nymph, Helen Jacobs, Sunshine Girl, 2 Lindesta, 3 Queen Helen II for 65 cents.

No. 48. WHITE. 5 medium each Albatross, Helen Wills, 3 each Dr. Durr, Mary Elizabeth, 4 Maid of Orleans for 80 cents.

No. 49. BLOTCHED. 5 medium each Mrs. F. E. Bennett, Bleeding Heart, Emma, 3 Edith Robson, 2 Moondara for 75 cents.

No. 50. SMOKY AND ODD SHADES. 5 medium each Mother Machree, Saraband, Rideau, Desdemone, Ambrosia for 65 cents.

No. 51. CREAM AND BUFF. 5 medium each Apricot Glow, Yvonne, 3 each Duna, Schubert, Wasaga for 65 cents.

No. 52. EARLY VARIETIES. 5 medium each Excellence, Mibloom, Al Smith, Miss Bloomington, Antione for 55 cents.

No. 53. EXHIBITION VARIETIES. 5 large each Picardy, Bagdad, Edith Robson, Mrs. Errey, Bleeding Heart, Pelegrina for \$1.80.

No. 54. EXHIBITION VARIETIES. Same as above except in medium size for \$1.10.

No. 55. GROWER'S COLLECTION. NOT PREPAID. 100 each of any 10 of the following varieties in medium size for \$9.00. Not less than 100 and not more than 300 of any one kind allowed on a 1,000 order. 500 at the 1,000 rate. This collection has been very popular. Order early as many kinds are sure to be sold out early.

AFLAME

ANTIONE

APRICOT GLOW

AVE MARIA

BAGDAD

BETTY NUTHALL

BLEEDING HEART

CARDINAL PRINCE

DORCAS ALDRICH

DR. MOODY

DR. SHOOK

EMMA

GAY HUSSAR

GIANT NYMPH

JANET

LA PALOMA

LAUGHING WATER

LITTLEJOHN

LOYALTY

MARMORA

MARY FREY

MOROCCO

MRS. DOUGLAS

MRS. SISSON

ORANGE BUTTERFLY

ORANGE QUEEN

OUR SELECTION

PAUL PFITZER

POND LILY

PRIDE OF WANAKAH

SARABAND

SCARLET WONDER

SPRAY OF GOLD

YVONNE

On a 500 order not less than 50 nor more than 150 of one variety.

"Just received your order of glads. I want to thank you for all the extras and the replacement of Rose Standish. It is certainly nice to buy from somebody where you get more than your moneys worth. Hope to get your catalog soon."  
—AUGUST SIEGRIST, Calif.

"I received the bulbs in a fine condition and I am very much pleased with them for which I thank you."  
—ANNA KRAYNER, Missouri.

"This past summer I had the most beautiful flowers and I have never harvested such wonderful big bulbs and bulblets. I used sheep manure for the first time.

"The summer before I got no blooms at all on account of thrip so last spring I put naphthalene on bulbs for about three weeks and had not a sign of thrips."  
—C. C. GROUT, Vt.

"I received the bulbs in good condition and thank you for the extra ones."

—WM. R. BREINING, N. Y.

"I know that it is the custom of most glad growers to include something extra but I was not prepared for any such generosity as this. When an enthusiastic but depression-ridden glad fiend like myself suddenly finds himself in possession of such head-liners as Jonquil, Lindesta, King Arthur and Reverie—well, I know just how a hungry newsboy feels when someone seats him in front of a turkey dinner and tells him to "go to it." It makes me believe in Santa Claus."

—LAKE DEUEL, Nebraska.

## 50 CENT SPECIALS

To get first-class flowers it is not at all necessary to plant large bulbs. In my own fields I plant almost entirely small ones and get fine bloom. Small and medium size bulbs will often give you nearly as good flowers as larger ones but will bloom later. So if you plant various sizes all at the same time your season of bloom will last over a much longer period. For that reason I have selected some varieties here on which I can give you an assortment of sizes which if you plant at one time early in the season will give you a long blooming season in the same variety.

I am not telling just the number of bulbs and sizes that will be in each collection as it will depend somewhat on the variety and the stock I have on hand but I will give you very good value. Just leave it to me and I guarantee you will be satisfied.

If you want some **bulblets** in place of part of the bulbs just say so, otherwise I will put in all **bulbs** in several different sizes. There will be at least one or two large ones in each set to give you the biggest bloom and then some smaller ones to follow on later in the season.

On some of these varieties even giving you big value there will not be many bulbs so you really should have two sets of each one. But one set of a kind will give you more flowers than you could get in any other way at the price. Remember it is 50 cents for an assortment of sizes of just one variety. You cannot use more than one variety in making up 50 cents worth. But you can have as many varieties as you want. Any five lots for \$2.25. Any ten lots for \$4.00 or any fifteen for \$5.75. In addition to this I will put in a bulb or two of something good for you to try out.

ACADIA  
AFLAME  
ALBATROSS  
AMBROSIA  
APRICOT GLOW  
AVE MARIA  
BAGDAD  
BETTY NUTHALL  
BILL SOWDEN  
BLEEDING HEART  
BLUE DANUBE  
BLUSHES OF CREAM  
CARDINAL PRINCE  
CHAS. DICKENS  
COMMANDER KOEHL  
CONSTANCY  
CORONATION  
DEBONAIR  
DORCAS ALDRICH  
DR. BENNETT  
DR. DURR  
DR. NELSON SHOOK  
DUNA  
ECSTASY  
EDITH MASON  
EDITH ROBSON  
EMMA  
EXCELLENCE  
GAY HUSSAR  
GIANT NYMPH  
GLORIANA

GOLDEN ANNIVERSARY  
GOLDEN BROWN  
GOLDEN CUP  
HELEN JACOBS  
HELEN WILLS  
JANET  
KING GEORGE  
KING OF REDS  
LA PALOMA  
LAUGHING WATER  
LITTLEJOHN  
LOYALTY  
MAGNA BLANCA  
MAMMOTH WHITE  
MARGARET FULTON  
MARMORA  
MARY FREY  
MIBLOOM  
MISS BLOOMINGTON  
MOROCCO  
MOTHER MACHREE  
MRS. CHARLES A.  
STEVENS  
MRS. GALBRAITH  
MRS. GERTRUDE PFITZER  
MRS. LEON DOUGLAS  
MRS. P. W. SISSON  
ORANGE BUTTERFLY  
ORANGE QUEEN  
OUR SELECTION  
PAUL PFITZER

PEARL OF CALIFORNIA  
PELEGRINA  
PICARDY  
PIRATE  
POND LILY  
PRIDE OF WANAKAH  
PRIMROSE PRINCESS  
RAPTURE  
RIDEAU  
ROI ALBERT  
ROI SOLEIL  
ROSE MIST  
SALBACH'S PINK  
SARABAND  
SCARLET BEDDER  
SCHUBERT  
SENIORITA  
SPIRIT OF ST. LOUIS  
SPRAY OF GOLD  
SULTAN  
SUNSHINE GIRL  
SYMPHONY  
TROUBADOUR  
WASAGA  
WURTEMBERGIA  
YVONNE  
26892  
26121  
BC25084  
26242  
27271

## DOLLAR ASSORTMENTS

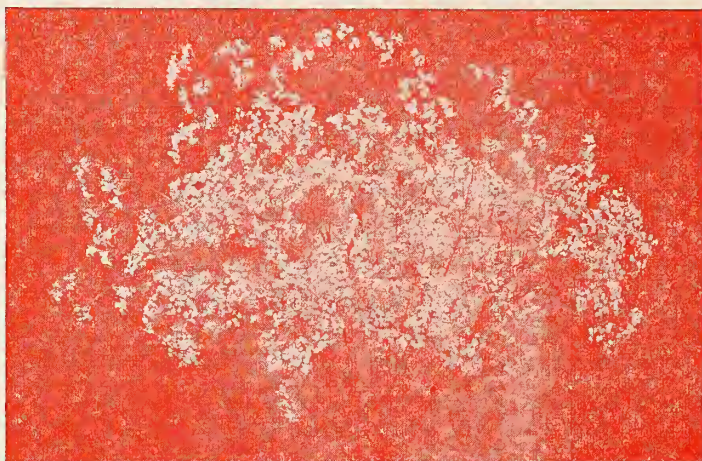
Here is another lot similar to the previous one but each set of assorted bulbs of a kind is \$1.00. Any five for \$4.60, any ten for \$8.50 or the fifteen for \$12.00.

Just leave it to me to satisfy you on any of these lots of assorted size bulbs in the last two offers. If you want **SOME** bulblets and less bulbs just say so and I can fix them up that way.

CHAMPLAIN  
ESCORT  
EVENSONG  
HEATHFIELD  
HERCULES

KING ARTHUR  
LINDESTA  
MARY ELIZABETH  
MAY DAVIDSON  
MIGNON

MILDRED LOUISE  
PINNACLE  
QUEEN HELEN II  
RED LORY  
THE MOOR



## Euphorbia Corolata (FLOWERING SPURGE)

This is a hardy perennial somewhat similar to double Baby's Breath but blossoms later. Blooms through August and September. Just the thing to go with glads or any other kind of flower. Will grow on most any kind of soil, even on dry sand, but good garden soil will make it very much better.

This is a plant that should be grown in every garden and commercial growers should plant it by the hundred. Absolutely hardy and I am sure you will like it.

In the northern states I would suggest Euphorbia be planted early in the spring. In the south or where it does not freeze hard, fall planting would be perfectly all right.

Though Euphorbia is easy to handle, and there should be no reason for it not doing well, I have had some complaints about the roots not growing. I don't know why this is because if they are planted at once and given a good watering they should all grow. I have had no trouble with them myself. But in as much as I have had some complaints I no longer guarantee the roots. I do give good strong healthy roots and if given half a chance they should grow but if they do not grow I shall not be responsible.

Prices are 4 roots for 60 cents or one dozen for \$1.25 prepaid. **We do not sell less than four. As they cannot be shipped with the gladiolus bulbs we have to make a separate shipment.**

100 roots \$6.00 f.o.b. with 50 at the 100 rate.

---

"Your glads are certainly a joy. Altho mine went in late and in a hard clay soil I had wonderful blooms and until late fall, October even."

—MARION S. BRYANT, Maine.

"Bagdad and Coronation are winners."

—P. E. ANDREWS, Mo.

"I sure had some wonderful glads from those I ordered last year. Everybody that saw them backed up the above statement. No trouble with thrip this year because I kept just one jump or more ahead of them by using Magnesium Arsenate or the spray I use for Mexican bean beetle.

"Have not found any diseased ones yet. Thanks to the clean bulbs purchased."

—PHILIP O. RICHARDSON, Mass.

"The glads I got of you last year were simply beautiful especially the Palmer varieties which in my judgment have it all over the other creations."

—F. D. WHITALL, Mich.

"Last spring I decided to try your No. 1 collection, 100 bulbs for \$3.00, and I can safely say that it is the very best collection that I have ever seen, and I ought to know, as I have been buying collections from all over the country for years past."

—R. E. GREEN, Pa.

## ABOUT THRIP

In many parts of the country gladiolus growers have licked the thrip menace but in many places thrip is still doing a great amount of damage. I firmly believe that where it has done damage it is due to the carelessness of the growers. Each gladiolus grower should not only disinfect his own bulbs before planting but should try to get all his neighbors to do the same. It is only by cleaning up a whole neighborhood that you can be reasonably sure of not getting any thrip. By all means disinfect every single bulb that is planted no matter where it came from even if they are some that you have grown yourself and you have not noticed any thrip on them. Disinfection of bulbs before planting is the first thing to do.

In the fall after the bulbs are cured and cleaned up put them in a fairly warm place, about sixty degrees or so, for four weeks, scatter naphthalene flakes over them, about one ounce to 100 bulbs, and cover the containers with paper or some material to confine the fumes. Then in about a month shake the naphthalene off and store the bulbs away in a cool place. Chances are very strong that there will be no thrip on them then but to be on the safe side I would disinfect before planting just the same. My new catalog will give full instructions for disinfecting and an instruction sheet will go with all orders of bulbs.

As soon as the plants are just a few inches high keep a watch out for thrip. They are a very small black insect about one-sixteenth of an inch long and about the size of a pencil mark. At the first sign of them begin to spray. There are various sprays on the market, commercial sprays and the Paris Green, molasses and water spray. Rototox has given good satisfaction in spraying in many places this past season. Another spray that has evidently done good work is Magnesium Arsenate, brown sugar and water. Four pounds of the Arsenate, sixty-six pounds of brown sugar and one hundred gallons of water or at that same rate.

I firmly believe that by proper treatment of bulbs, disinfecting, spraying, etc. that perfectly good gladiolus can be grown even in an infested area. Many people who have had trouble with thrip before have grown fine glads this year and say they have the pest entirely under control.

We used to think that gladiolus were impervious to all diseases and insects and that all we had to do was put them in the ground and they would bring forth a bountiful crop of bloom. It has got so now that we have got to spray for everything. We can't continue to raise good roses without spraying every few days and the same is true with dahlias. Why is it any worse to spray gladiolus? Of course they can be grown sometimes without spraying the same as roses and dahlias can be grown well sometimes with no special work, but it is safest to do things right and reap the reward.

If you have had thrip this year do not under any circumstances throw the bulbs away as they will not be harmed in any way whatever. Just treat in naphthalene, disinfect in the spring and they will be perfectly all right for another year.

---

---

## TESTIMONIALS

"Bulbs arrived all O.K. Many thanks for the liberal count and extras."

—R. L. BOARDMAN, Mass.

"From the bulbs I bought from you last spring I got very good success raising show flowers. Many blue ribbons. Bagdad took grand sweepstake at our flower show last August. Debonair, Picardy, Duna all took blue ribbons."

—JOS. ZIEGLER, Minn.

"And now just a word about the bulbs and bulblets which I got from you last spring. I never had bulbs and bulblets grow so good as those did. I cut spikes of glads three feet tall with flower heads 16 inches long grown from your bulblets such as Rapture, Debonair and Edith Robson."

—E. D. SEAMAN, Pa.

"This is just to let you know how well pleased I was with the bulbs I bought of you last spring. They did better in our hot dry summer than any others I had. I am ordering all my glads from you this year as I am convinced your bulbs are the best to be had."

—MRS. J. GOLTZ, Minn.

# HOW TO GROW GLADS

With every order of bulbs a four page circular is enclosed which gives you all the necessary information about growing glads. There was a time when anyone could just chuck the bulbs in the ground and be assured of having fine flowers. Some people still do that and in a neighborhood where there are no thrip or other injurious insects this can still be done. But nowadays we have to be more careful with most all kinds of plants and it certainly pays to do everything you can to get the best results.

Here are the main essentials for growing good glads. My cultural instruction sheet will fill in the details.

Plant in northern latitudes about the time that the trees are leafing out and up to July 1.

Glads will grow in most any kind of soil provided they have plenty of water during the blooming season but prefer a nice mellow loam. However with good culture and water at the right time they can be grown in hard clay or in sand.

Nowadays with thrip, a very injurious, very small insect so prevalent in many localities, it is best to disinfect your bulbs before planting and spray them occasionally through the season. In place of disinfecting the bulbs you can scatter naphthalene flakes on them and keep the flakes on and the bulbs in a warm place for about three weeks. (I can furnish naphthalene flakes if you can't obtain it locally.) I prefer to disinfect just before planting. Many careful growers both use naphthalene and disinfect.

**TO DISINFECT.** Use Bichloride of Mercury one ounce to seven or eight gallons of water and soak seven hours or longer. My instruction sheet will tell more about this.

Glads do not want wet soggy soil but if there is good drainage they will take a lot of water during blooming season.

If you wish one of my instruction sheets before getting your bulbs drop me a line and I will send you one.

**ABOUT LABELS.** There is an almost infinite variety of labels. Some prefer one kind and others another. Some like metal tags on a heavy wire stake and others use wooden ones. I personally prefer the wooden labels. Have always used painted labels but this past season had a little unpleasant experience in that the paint came off during the middle of the season and of course took the writing with it. I found that unpainted labels marked with an indelible pencil would last right through the season in good shape. I have a special pencil that I am using now and I can sell it for 15 cents each. As a convenience to my customers I can furnish any size wooden labels you wish.

**WIRED TREE LABELS** to use in marking bulbs while bulbs are being disinfected. You can wire these to any kind of stake afterwards to label plants in the field. 35 cents per 100, 500 for \$1.50, 1,000 for \$2.50 prepaid if sent with bulbs, otherwise f.o.b.

## GARDEN LABELS

6 inch same price as tree labels.                      10 inch, 25 for 25 cents, 100 for 90 cents.  
8 inch, 25 for 20 cents, 100 for 75 cents.            12 inch, 25 for 35 cents, 100 for \$1.25.

Prepaid to 6th zone if with bulbs.

**EVERMARK PENCIL**, 15 cents each.

**BAGS FOR DISINFECTING.** For your convenience I am offering bags to disinfect your bulbs in. These will last for several soakings and can be kept two years or more.

Prices postpaid.

Size A to hold up to about 5 or 6 large bulbs, 2 cents each.

Size B to hold up to about 25 large bulbs, 3 cents each.

Size C to hold up to about 1 peck of bulbs, 5 cents each.

Size D to hold up to about 1 bushel of bulbs, 10 cents each.

**SHORTAGE OF BULBS.** Since my fall list was sent out and I have begun to work on this latest price list I have found that there is a very serious shortage of a number of kinds of glads. Maid of Orleans, Minuet, Star of Bethlehem and a number of other kinds are in big demand and there positively are not enough in existence to supply all those who want them. So to make sure of getting the kinds that you want you will do well to order early.

Where I have discontinued at wholesale certain varieties that were in my fall list please do not ask for them at wholesale as I positively cannot furnish them.



*"Your collection of glads in No. 1 is very nice. I never saw so many varieties in one collection. I had two of each color from pure white to almost black."*

—*THALIA G. PINCKNEY, N. Y.*

**Dr. Durr** (PF) (Dec) (Com) Ruffled cream white. Early. 6-8 open. This past season I liked this very much. Bloomed before any other white that I had in quantity and it proved a very valuable commercial variety for its season. Spikes are not so long as we would like but at the time it blooms good whites are scarce and this showed up very well as a cut flower variety.

**Dr. F. E. Bennett** (D) (Ex) (Com) (90-95) Fiery scarlet with white lines in the throat. 7-8 large well placed blooms open. One of the very best for exhibition or commercial purposes. Still considered the best cut flower red.

**Dr. Hoeg** (PRESTGARD) (Dec) Glistening dark red. This seems to be quite popular. Some well known growers think it is the best dark red.

**Dr. L. H. Bailey** (K) (Dec) (72) Deep tyrian rose with deeper velvety blotches. Several medium size blooms open. A beautiful variety.

**Dr. Moody** (KINYON) (Ex) (Com) (75-80) Second early. Light lavender with very fine penciling of a darker shade. Long spike of blooms with many open. Strong grower. In the south I am told this variety makes a better cut flower than Minuet. In the north it is a matter of taste as to which is better. They are enough different to warrant trying both. Fine propagator.

**Dr. Nelson Shook** (K) (Ex) (Com) (78) Deep tyrian rose of a dark shade. Strong grower. Large, strong spikes with 6-8 blooms open.

**Dream O' Beauty** (ZIMMER) (Ex) (Com) Large rose red. Very tall strong grower. A delightful color. Very large flowers. Big spike and all in all a very nice thing except that it is inclined to have poor placement. However Mr. Zimmer tells me that he can sell to the florists every spike that he can grow. Heavy propagator.

**Duna** Palmer strain. See page 11.

**Early Dawn** (BRIGGS) (Com) (Dec) (65-70) A new early geranium pink. Large blooms on a tall vigorous spike. Good propagator.

**Early Melody** (ARENIUS) (Com) (Dec) Second early light lavender pink. 6-8 good size blooms open at a time.

**Ecstasy** (K) (Dec) (85) Dark cherry red with blotches on all six petals. Very odd and distinct.

**Edith Mason** (VAUGHAN) (Ex) (Com) (90-100) Large light pink with white throat and white mid-ribs. Strong grower. A really beautiful variety.

*"While Picardy was a beautiful glad it can't compare with Wasaga which was the most wonderful glad I have ever grown.*

*"No. 1A was the finest assortment of colors I ever got in mixed bulbs."*

—*MRS. E. A. GREEN, Pa.*

*"The gladiolus bulbs purchased from you last spring developed into the most gorgeous bloom we have ever seen outside of flower shows."*

—MISS L. E. TAYLOR, Mass.

**Edith Robson** (BROWN) (EX) (COM) (80-85) Light salmon rose with reddish blotch. Very tall, strong growing plant with huge spike of bloom. One of the very best varieties originated in Australia. 10-12 well placed blooms open.

This is one of my favorite varieties and have had very fine reports on it from other growers. Makes a wonderfully fine commercial variety as well as one of the best for exhibition.

"Edith Robson proved to be very good and it is such a lasting flower it should make a really splendid commercial variety."

—R. H. BATH, England.

**Ella May** (CLARK) (Small Dec) If you are interested in the small decorative type this is one of the prettiest ones I have seen and would advise you to try it. Light rose with creamy yellow lower petals. The flower heads are not very long and it doesn't open many at a time but the color, form and placement make it one of the ideal varieties in this type.

**Emile Aubrun** (LEMOINE) (EX) (85-90) Coppery bronze often overlaid with slate. Large cherry red blotch. Under good culture this produces long spikes with 8-12 blooms open but unless conditions are good the spikes are apt to be rather short as with many Australian varieties which are seedlings of Emile Aubrun.

**Emma** (VELTHUYS) (EX) (COM) Salmon with reddish blotch. Long spike with 8-10 large well placed blooms open. This has been very fine with me this past season and I feel sure that it will make a first class cut flower variety. Have had a number of good reports on it. If you want a blotched pink you can't do better than get Emma.

"Thank you for recommending Emma. It is a beauty."

—REV. JAMES A. VINCENT, Wis.

**Escort** (TOWER) (COM) (65-70) Very early ruffled cream white with cream throat. Eight or more medium large well placed blooms open with most of the remaining buds on the long spike showing color. Won as best white at the Washington show at Seattle 1933. Forces well in the greenhouse. Because of its extreme earliness being one of the first to bloom and making such a nice spike I feel sure that this will become a very popular standard variety for florist work.

"Think Escort will prove a good commercial white because of its earliness and more than the average number open at once."

—A. A. ARENIUS, Mass.

**Evensong** Palmer strain. See page 11.

**Excellence** (K) (COM) (DEC) (69) Very large light red, and early. The earliest large red and the largest early red that I know of. A glowing color. About the only fault of this variety is that it opens only three or four blooms at a time but they are so large, such a bright color and so early that it should make a good early commercial. I know of no other good red blooming so early.

Have had a number of fine reports on this variety.

*"No 26121 was so lovely that I saved the small bulblets from them."*

—CORR A. THOMPSON, N. Y.

*"Made three entries of Picardy and one of Pirate and came out with firsts on all. Am more than pleased with them. Pirate is very beautiful."*

—A. H. SCHLESINGER, N. J.

**Gate of Heaven** (PF) (EX) Beautiful ruffled deep yellow. Buds sometimes greenish. Medium height. A very pretty thing but doesn't seem to be a fast propagator.

**Gay Hussar** (SAL) (Com) (Dec) (80-90) Salmon orange shading to yellow throat and scarlet throat markings. Six or more blooms open. Moderate height. A nice cut flower.

**Giant Nymph** (COLEMAN) (Com) (EX) (80-85) Large light salmon rose. Good color but often flakes. Considered one of the very best commercial and exhibition pinks. An old variety that has stood the test of time.

**Gladys Clegg** 1936 introduction. See page 19.

**Gloriana** (BETSCHER) (EX) (Com) (85-90) Golden salmon with clear, cream yellow throat. Blooms do not open up wide but are rather cup shaped. A beautiful color and can be grown wonderfully well. A good commercial.

**Golden Anniversary** (K) (Dec) (101) Fawn yellow suffused with blush pink. Large red blotch. Finely ruffled. 4-5 open. A distinct and beautiful variety. Strong grower.

**Golden Brown** (K) (Dec) (72) Mahogany red shading to brown in the center. The nearest to a brown color in gladiolus. Medium size. Novel coloring.

**Golden Cup** Palmer strain. See page 11.

**Golden Flame** (KINGSLEY) (Com) (Dec) Dark orange salmon with yellowish lip and mid-ribs. Orange feather. Tall, straight spike. 6-8 blooms of heavy substance open at a time. Does not wilt in the hottest sun. Sometimes placement is none too good.

**Golden Goddess** (SAL) (EX) (Com) Rather light medium yellow with 10 or more medium size well placed blooms open. The first patented gladiolus. Has created quite a sensation wherever shown. Has a long spike of bloom.

As this variety is patented it can be grown only for your own use and the increase cannot be sold or transferred in any way without the written consent of Mr. Salbach.

**Grand Slam** (SAL) (Dec) Large clear orange salmon. Said to be a sport of Pfitzer's Triumph. Makes a tall plant and fine spike of bloom and would be a very fine variety but with me has been quite subject to crooking. Possibly in other places it wouldn't do this.

**Heathfield** (ERREY) (EX) Bright orange crimson. 8-10 large well placed blooms on an exhibition type spike.

**Hector** 1936 Introduction. See page 16.

*"If I had to choose the two I liked best I should name Hillbilly and Pelegrina. Hillbilly is truly named, a husky towering red-and-jumble.*

*"We liked Rideau immensely.*

*"I must say that your stock gave us much satisfaction which I greatly appreciate and am eager for our second season with your bulbs." —DONALD B. HOWARD, Vt.*



*Mrs. Langford*



*Mary Elizabeth*



*Bagdad*

*"Allow me to extend to you and your assistants for the satisfactory glads you sent me last spring a vote of thanks. And hope I may be able to get as good a selection again."*  
—GEO. H. VAN DUSEN, N. Y.

**Helen Jacobs** (SAL) (Com) (Dec) Salmon pink and lower petals cream colored with crimson stiplings. 6-8 medium size flowers open. Very strong and vigorous.

**Helen Wills** (SAL) (Com) (85-90) Tall plant. 6-8 medium large creamy white blooms with pale yellow throat open at a time. A rather slow propagator and does not make a very large bulb but is a nice cut flower. One grower wrote me that it was the best white he had.

**Hercules** (CROW) (Dec) Orange buds opening up into a distinctive shade of bronzy orange or deep buff. Very tall, strong, massive grower with long flower heads. 4-5 open at a time though has been known to open as high as ten. Extremely popular with garden visitors. Fair propagator. Always in big demand.

**Heritage** (RISTOW) (EX) (Com) Rich warm pure pink lighter in the throat with white mid-ribs on the lower petals. Long spike of bloom but sometimes the stem below the first flower is rather short and it sometimes crooks. However it can be grown very fine.

**Hillbilly** (TOWER) (Dec) Rose doree overlaid and heavily ruffled and striped amaranth purple. Large cream blotch thickly striped and penciled scarlet red. 4-6 very large wide open well placed blooms. Have had a number of fine reports on this variety.

**Honor** (KINYON) (EX) (Com) (80-85) Clear lavender with dustings of self color on white on lower petal. Six large well placed blooms open at a time making a good showing. Not so tall as some but a good straight spike and large flower head and an unusually beautiful clear color. This looks to me like an improvement in the lavenders.

**Incense** (MRS. MILLER) (Dec) The fragrant glad. A medium size pink. The color is not unusual but this variety is the only one I have seen that unmistakably has a fragrance. There is no question whatever but that this variety is really fragrant. You can detect it easily from one bloom and a bunch of them in a room perfumes the whole room with a very pleasing fragrance. In addition to Incense having a fragrance of its own it has proven that it can transmit its fragrance to its seedlings. Something really good in fragrant glads should come from crosses of this variety.

Mrs. Miller, the originator, is offering prizes for seedlings of Incense.

This variety is patented and anyone buying it must sign the coupon on page 45 and the bulbs will be shipped direct from the originator.

See page 45 for further information about this.

**Innovation** (BATH) 1936 Introduction. See page 19.

**Inspiration** Palmer strain. See page 11.

**Jalna** Palmer strain. 1936 Introduction. See page 16.

**Janet** (CROW) (Dec) (80-85) Smoky gray shaded peach pink. 4-5 large velvety blooms open at a time. A beautiful decorative.

*"The corms which I got from you this year have done remarkably well. Very pleased."*  
—GEO. R. COX, England.

*"Made a hit this past season with Bagdad, Picardy and Rapture. Next season I will put these three on the map sure enough."*  
—F. R. CATES, N. C.

*"I want to write and tell what wonderful gladiolus I had this summer. I thought I had very pretty ones. They were but I never saw anything as gorgeous as Picardy."*  
—MRS. MAE SMITH, Ohio.

**Joan Pety** (KINYON) (Ex) (Com) (75-80) Pure pink with small violet markings on cream throat. 6-10 or more perfectly placed medium large flowers open at a time. Plant always tall and straight. A very beautiful variety.

**J. S. Bach** (PF) (Ex) Early. Orange salmon, lighter in throat with white mid-ribs. Sometimes the color varies a good deal some flowers being much darker than others. Medium height plant but has a long massive spike with as high as 12 or more blooms open. A fine variety when well grown but rather slow propagator.

**Jonkheer Van Tets** (PF) (Ex) (Com) (90-95) Large pure white with seven or eight blooms open. Placement not always the best. Rather slow propagator.

**Jonquil** Palmer strain. See page 11.

**King Arthur** (ARENIUS) (Com) (Dec) Immense ruffled rosy lavender of a distinct form and color. 4 or 5 immense blooms open at a time. I like this variety better every year. When used with Wasaga or other pastel shades it makes a beautiful thing for florist use. A very fine variety that everyone should have.

*"The 50 King Arthur you sent me were very much liked not only by myself but by all who saw them."*  
—R. C. KAUFFMAN, Penna.

**King George** (MAIR) (Ex) (Com) (85-90) Large red with white throat. Tall plant with long spike of bloom. Very showy.

**King of Reds** (K) (Dec) (92) Large red with darker markings.

**Lady Eaton** Palmer strain. See page 11.

**Lady Winsome** (R. M. PALMER) (Dec) (90-95) An exquisite new decorative variety of large size and very strong growth. Luminous rosy-salmon with small carmine throat marking. Buds are a lovely salmon-buff and open with rolled petals. Never streaks. Fine in every way except that in hot weather it may need staking as it has a large heavy flower head and grows very tall. Good propagator. Popular with garden visitors.

**La Fiesta** (SAL) (Ex) (Com) A most vivid new shade of orange. Flowers are not the largest but the color is so vivid and it makes such a nice spike that I feel sure it will become very popular. 6-7 well placed florets open at a time with several buds showing color.

**La Paloma** (DUSINBERRE) (Com) (Dec) (70-75) Second early. Large bright vivid orange of heavy texture. A new and distinctive shade and one of the best orange varieties. 4-6 open.

**Laughing Water** (FISCHER) (Com) Salmon pink. Long spike with 6-8 or more open. It is said to be a fine forcing variety. A nice commercial.

*"Had wonderful blooms from your bulbs this year. I had never seen Picardy or Mildred Louise. The Mildred Louise bloomed first and I thought it the most beautiful thing I had ever seen but after Picardy bloomed I decided I was wrong. It surely is a wonder. Also liked Bagdad."*  
—E. G. SMITH, Ohio.

*"For your information I won the first prize with Picardy which I purchased from you. This is my first experience with gladiolus and I am very much pleased with the results."*

—ALDEN MILLER, N. J.

**Lavender Bride** (BRIDE) (Dec) (70-80) Very large smoky lavender. Very well liked but stems inclined to be weak.

**Leander** (ERREY) (Ex) Bright orange salmon with soft magenta blotch. Long spike with 8-10 or more open at once. Wonderfully showy and different. Should be cut in bud as bright sun sometimes fades it.

**Leschi** (KAYLOR) (Dec) (85) Rich deep maroon red with nearly black blotch. Velvety sheen. Very beautiful.

H. V. Wright, of Maryland, a good grower who knows glads, says that Leschi is the best dark red he has ever seen.

**Lindesta** Palmer strain. See page 12.

**Littlejohn** (STEVENS) (Dec) (Com) Deep rose with a soft feather of rosolane purple on lower petals. Six or more medium size blooms open. A good dark rose.

**Lotus** (PRESTGARD) (Dec) (Com) Large ruffled cream pink. When well grown a very beautiful thing.

**Loyalty** (AUSTIN) (Com) (Dec) (Late midseason) Large clear deep yellow. Several open. Very strong, husky plant. Some people consider this the best commercial yellow. Larger than most of the yellows and about as good as any for commercial purposes.

**Lucifer** (ERREY) (Ex) Bright orange with amaranth crimson blotch. Long spike with nine or ten open at once. This is a very showy variety and I believe will become very popular. Stem is a little weak but for exhibition or the home garden it is a fine thing. One of Errey's best.

**Magna Blanca** (SAL) (Dec) Large ivory white with creamy yellow throat. Very tall and makes a beautiful spike of bloom but stems are inclined to be weak. In California has been grown 8 ft. tall.

**Maid of Orleans** (PF) (Ex) (Com) (90-95) Beautiful milky white with cream throat. Tall sturdy grower with eight or more well placed flowers open at a time. This variety is generally considered by most of the growers who have tried it as the coming commercial white. For all general purposes and under all conditions I don't know of a better white for cut flower growers. There may be other whites that are better for exhibition but not for commercial work.

**Mammoth White** (PF) (Ex) (Com) Immense pure white with sometimes just a hint of cream. 5-6 or more immense flowers open. Often over six inches across. Wonderful exhibition variety and becoming increasingly popular as a commercial for nearby use. Does not stand long distance shipping but for local use is one of the very best commercials. Very outstanding.

*"I have won a lot of prizes with your glads this year."*

—N. B. GUTTERSON, Vt.



*Coronation*



*Bleeding Heart*



*Edith Robson*



*"I have had wonderful results with the glads that I bought from you this year and I want to thank you for your many extras and fair dealings."*

—WM. L. BAILLARGEON, N. H.

**Margaret Fulton** (OGRODNICHECK) (Com) (Dec) Clear rich soft dark salmon of a distinct shade which is different from the color of any other variety. 6-8 well placed medium size blooms open. This should be a fine cut flower variety.

**Margaret Peter** (ERREY) (Dec) Early. White flushed pink with large crimson blotch. 6-8 large flowers open. A fine variety though stems are a little inclined to be weak.

**Marion Louise** (CARPENTER) (Com) (Dec) Early midseason. Large pure white with several blooms open on a tall, straight spike. This will be popular when better known.

**Marmora** (ERREY) (Ex) (Com) Sport of Emile Aubrun. Color is fine gray with a pale purple blotch. Sometimes part of a flower or sometimes a whole flower will revert back to the Emile Aubrun color. 8-10 well placed blooms open. Fine variety for exhibition and should be used more by florists. Harmonizes well with white or yellow. Early.

**Mary Elizabeth** (STEVENS) (Ex) (Com) (90-95) Medium size beautifully ruffled white with yellow throat. 6-9 open on a long spike. One of the most beautiful whites and has won a lot of prizes at exhibitions. Last year all bulbs were sold out so order early this year.

**Mary Frey** (GELSER) (Com) (Dec) (75-80) Medium early lavender pink. The earliest good lavender. Opens eight or more at a time.

**Maunga** (BURNS) (Ex) New immense pure white. 4-5 open. This has not bloomed for me but understand it is very fine.

**Mauve Magic** (ARENIUS) (Ex) New tall lively mauve of an odd shade. Opens eight large blooms at a time.

**May Davidson** (J. J. BROWN) (Ex) (Com) Soft rose with deeper shadings with crimson blotch. Petals edged steel blue. 8-10 medium large blooms open.

**Mibloom** (STEVES) (Com) (60-65) This is as early as anything on my place and the first to bloom when forced in the greenhouse. Large white tinted pink with scarlet blotch. 5-6 open. If you want early flowers this variety will give them to you. Good florist variety.

**Mignon** (CHRIST) (Com) (Dec) Medium size. Soft pink with yellow throat. Very pretty.

**Mildred Louise** (WENTWORTH) (Com) (Dec) (76) Originators description: "Prevailing color a pure strawberry pink self on upper petals with lower petals tipped strawberry pink, blending to pinard yellow in the throat with faint spectrum red pencilings on midrib quite deep in the throat. Anthers delphinium blue." (Ridge-way color chart).

Distinctive shade and becoming more popular all the time.

*"My order of gladiolus collection No. 1 which went in with Mrs. Henry's order was most satisfactory."*

—MRS. B. P. PHINNEY, Mass.

*"The bulbs bloomed superbly."*

—MRS. F. W. LONGFELLOW, N. Y.

*"Mrs. T. E. Langford though a No. 6 bulb had a beautiful long spike of bloom in delicate colors."*

—AMBER B. MANN, Iowa.

**Milford** (RIDES) (EX) (COM) New exhibition light blue. Considered by some growers as about the last word in light blues.

**Minuet** (COLEMAN) (EX) (COM) (80-85) Beautiful light pinkish lavender. Large size. Usually 5-6 blooms open at a time though sometimes more. The standard by which all other light lavenders are judged. Always in big demand. In the north at least is considered about the best lavender though I understand that in the southern states Dr. Moody is better as a commercial.

**Miss Bloomington** (K) (COM) (DEC) (67) Very early tall light yellow. Six or more good size well placed blooms open at a time. Growers who are looking for something for the early cut flower market should try this. It looks to me like one of the very best yellows for commercial purposes and is extremely early.

**Miss Greeley** (BRIGGS) (COM) (DEC) Somewhat similar to W. H. Phipps. Though a darker shade of pink and though it probably will not make so long spikes as Phipps at its best it will average fully as good. Its main feature is that it blooms three weeks earlier than Phipps. Valuable on that account.

**Miss New Zealand** (JULYAN) (EX) Apricot salmon suffused with rose. Peach color blotch in throat. This variety is the first of a new giant strain. Eight or more immense blooms open. Has been grown with eight inch flowers but ordinarily they do not get so large. The bloom spike is so heavy that it needs staking up. A good variety for exhibition or the home garden but really not so beautiful as Picardy or some others.

**Moondara** (ERREY) (EX) Deep salmon with orange crimson blotch bordered with yellow. Long spike with eight or more blooms open.

**Moorish King** (PF) (EX) Immense, rich very deep red on a tall stem. Not a fast propagator.

**Morocco** (PF) (EX) Glistening deep red. About the color of Persia tho a bit lighter but larger and better in every way. 6-8 good size blooms open.

**Mother Machree** (STEVENS) (EX) (95-100) Vinaceous lavender overlaid toward the edges of the petals with salmon pink. When bloomed outdoors it has a rather dull slaty color. Should be picked in the bud and opened inside where it opens into a really beautiful flower. Tall plant with 8-12 blooms open. One of the best smokies. Was \$100. each a few years ago.

*"I also want to thank you for the fine bulb of Mywag sent this year. The name Mywag certainly fits the glad perfect. Was very sorry that I didn't enter the spike in the recent New York City show as I am sure it would have won several prizes, one for the tallest spike, largest floret and other for most outstanding spike."*

—CHAS. HUNT, N. J.

*"I had wonderful results from the small bulbs you sent me this spring, especially Bagdad, Coronation, Debonair, Duna, Early Melody, Mauve Magic, Netherland Prince, Schwaben Girl, Star of Bethlehem and Wasaga."*

—CHAS. A. EVERETT, Mass.

**Mr. Wm. Cuthbertson** (MAIR) (EX) (COM) Rose flaked lighter with cream throat. Exhibition type spike. Some think this will make a good commercial.

**Mrs. Chas. A. Stevens** (K) (DEC) (72) Mallow purple flaked with deep rhodamine purple. An odd but beautiful and distinctive color that is liked by those who favor the purplish shades. Makes a nice spike.

**Mrs. F. E. Bennett** (BOYNTON) (DEC) (COM) White with small purple blotch. Seems to be popular. Good.

**Mrs. Galbraith** (MAIR) (EX) (COM) Large exhibition rose salmon. Very pretty.

**Mrs. Gertrude Pfitzer** (PF) (DEC) Strong growing medium shade of blue.

**Mrs. G. Wade** (WHITELY) (EX) (COM) Light yellow. Long spike with many blooms open at a time.

**Mrs. Leon Douglas** (D) (EX) (COM) Salmon rose striped with flame and scarlet. An old variety that has been very popular and still one of the tallest, largest and showiest glads. Six or more very large blooms open. Often grown for exhibition for the tallest glad in the show.

**Mrs. P. W. Sisson** (COLEMAN) (EX) (COM) (90-95) Beautiful creamy light pink. Six or more large blooms open at a time. Has been used extensively as a commercial though some of the growers say that it is a little inclined to be soft. Certainly makes a nice cut flower for nearby use.

**Mrs. S. A. Errey** (ERREY) (EX) (COM) (85-90) Very large orange salmon with orange red blotch. Eight or ten immense blooms open at a time. It should be cut in the bud and opened in the house as it fades somewhat in the sun.

**Mrs. T. E. Langford** (CROW) (EX) (COM) (95-100) Exquisite apple blossom pink with touch of canary in the throat. Good height, always straight stems with 8-10 medium size blooms open. This variety is very fine both as an exhibition and commercial sort. A very good shipper and will be immensely popular when more plentiful. Some people have had trouble growing the bulblets but with me it is a good doer. I am not offering planting stock or bulblets of Mrs. Langford this year as I have found a slight mixture in the small stock.

"Mrs. Langford does wonderfully well here."

—R. A. WALBAUM, N. D.

**Mywag** Palmer strain. See page 12.

**Nancy Ann** (KINYON) (COM) (DEC) (80-85) Light lavender pink shading slightly deeper on edges of petals with cream blotch. Six perfectly placed lightly ruffled blooms on a long, always straight spike. Will make a good commercial.

*"I have always been perfectly satisfied with bulbs purchased from you and treatment in general."*

—W. SMITH, N. Y.

"I have stock from Mr. . . . . and . . . . besides small amounts from several other sources but of all must say that yours are equal to or better than any of the others."  
—B. J. PARKER, Wis.

**Nerissa** (ERREY) (EX) Large salmon. Orange salmon markings on lower petals. 8-10 open. Good exhibition variety. Very pretty.

**Netherland Prince** (STEVENS) (EX) (COM) Immense bright salmon. Tall, strong grower with 6-8 open. Blooms often six to seven inches across. Flower head is so heavy that sometimes it will bend over somewhat but does not crook.

**Nyora** (ERREY) (EX) Rosy salmon with crimson blotch. 6-8 open. Very showy variety.

**Odalisque** (ERREY) (EX) (COM) Large creamy white with scarlet blotches. Tall, strong grower with 7-10 blooms open. One of the very finest in this color class. Not a fast propagator. One of my favorites.

**Orange Butterfly** (SAL) (PRIM) (EX) (75-80) Bright orange of fine substance. 10 or 12 well arranged medium size flowers open at a time. A spike of bloom looks like a flock of butterflies in flight. Crooks sometimes. One of my favorites.

**Orange Lady** (STEVES) (DEC) Early. Clear light orange, suffused pink. Darker on lower petals. Several blooms open at a time.

**Orange Princess** (DEGROOT) (DEC) Beautiful salmon orange with small crimson feather. Somewhat ruffled. Very good propagator.

**Orange Queen** (PF) (COM) (DEC) (75-80) Light orange, deeper color toward edge. Orange red lines in throat. Tall, slender stems. One of the standard commercial varieties.

**Orange Wonder** (KEMP) (DEC) (COM) Late. Large dark orange on tall, straight spike. A good orange but opens only about four blooms at a time.

**Orlando** (ERREY) (EX) Rosy salmon. Many blooms open.

**Our Selection** (AUSTRALIA) (EX) (COM) Salmon red flaked with deeper shade and usually marked on the outer part of the flower with slate flakings. Lower petals have a blotch of cerise bordered with cream. 8-10 well placed medium large blooms open. Good exhibition variety and when opened inside so that the slate flaking fades out it makes a nice cut flower. Medium height.

**Paul Pfitzer** (PF) (COM) (DEC) (75-80) Beautiful medium early reddish purple with velvety texture. Nice easy grower.

**Pearl of California** (KINGSLEY) (EX) (COM) (85-90) Large LaFrance pink. 6-8 blooms open.

**Peerless Pink** (DEGROOT) (DEC) (COM) Deep salmon self color. 5-6 large blooms open at a time.

"This year's show I won 7 out of 9 firsts placing Rapture, Debonair, Bagdad, Star of Bethlehem and Spray of Gold first.

"I am more than satisfied with the quality of the stock not even mentioning the generous count."  
—G. A. KRUEGER, Minn.

*"I checked every gladiolus I got from you with the color description in the catalog and was amazed to see how closely they checked. After that experience I wouldn't hesitate to buy a bulb from the catalog description. —NORMAN W. MASON, N. H.*

**Pelegrina** (PF) (EX) (COM) Early large dark blue. Six or more well placed blooms open with nearly all the remaining buds showing color which gives the appearance of a large spike of bloom. Stem is a little weak but when forced in the greenhouse they stand perfectly straight. To my mind the best dark blue variety.

**Pfizer's Triumph** (PF) (COM) (DEC) (85-90) Giant reddish salmon orange with bright reddish blotch. One of the most popular salmon pinks.

**Philip Breitmeyer** (K) (DEC) (73) Rose pink tinted lavender. Dark lines in throat.

**Philomela** (STEVES) (DEC) Salmon flaked orange scarlet. Large cream blotch on lower petals. 9-10 large blooms open. Sunproof.

**Phyllis McQuiston** (STEWART) (DEC) (COM) Midseason. Large deep glowing shrimp pink shading a little lighter in the throat. Tall straight vigorous plant. 18-20 buds with five or more large flowers open. Have not seen much of this myself but have heard many good reports on it.

**Picardy** Palmer strain. See page 12.

**Pinnacle** (ARENIOUS) (EX) (COM) A new rose pink opening 10-12 medium size blooms at a time on a tall, straight spike. The color of this variety is not so unusual as some and the blooms are not extra large but it grows so tall and straight and opens up so many perfectly placed blooms at a time so easily that it looks to me like a coming commercial as well as exhibition variety. I consider this a real acquisition in the rose pink class. Be sure to try it.

**Pirate** Palmer strain. See page 12.

**Polar Ice** (PF) (COM) (DEC) Early. Medium to large size white with several blooms open. With me placement is not always good. Claimed by the originator to be a very fine forcing white. Have not forced it myself.

**Pond Lily** (K) (DEC) (80) Large deep rose pink with darker throat. Six or more open. Beautiful and distinctive rose variety.

**Prairie Gold** (CORRINGTON) (DEC) (COM) Deep yellow with fine penciling of carmine making the color seem still darker. Four or more fairly large blooms open at a time on a spike of about fifteen buds. Tall, strong, vigorous grower and propagator.

**Premier Henry** Palmer strain. See page 13.

**Pride of Wanakah** (CRISWELL) (EX) (COM) (90-95) Large beautiful deep lavender rose. When well grown is magnificent but needs good culture to get long spikes. A good commercial.

*"Here are the three I rank the best; Pelegrina, Constancy and Maid of Orleans. Of course the others were all nice but this is my choice and I did not have thrip either. Your bulbs were wonderful and so were the extras."*

—RAINBOW GLAD GARDENS, N. H.

*"Rototox is a spray which I cannot recommend too highly.  
"Your bulbs have done wonders for me this summer and I have been glad to tell  
all glad lovers I meet where they come from."*  
—MILES OAKLEY, N. Y.

**Primrose Princess** (SAL) (Ex) (Com) (95-100) Tall clear primrose yellow, lower petals darker. Long spike of well placed blooms. One of the best light yellows.

**Prof. Van Slogteren** (ALKEMADE) (Dec) (Com) A very beautiful soft rose color. Nothing else just like it. You should try this one.

**Purple Glory** (K) (Dec) (79) Large ruffled deep velvety maroon. Popular old variety.

**Queen Helen II** (SAL) (Dec) (Com) Light rose with cream blotch. Carmine feathering in throat. Very strong growing pink that looks like a good one.

**Ramasses** (STEVENS) (Ex) (79) Very tall plant with large heavily ruffled purple flowers of a beautiful shade. When well grown this is very nice. Blooms up to 7 inches across.

**Rapture** Palmer strain. See page 13.

**Red Lory** (ERREY) (Ex) (95-100) Carmine rose with large purplish red blotches. Large flowers and nearly the whole spike open at once. Needs good culture to get long spikes. One of the most gorgeously magnificent varieties grown.

**Red Phipps** (BRIGGS) (Ex) (Com) Late midseason light red. Similar in habit to W. H. Phipps but spikes average longer. This looks like a good coming commercial.

**Red Splendor** (K) (Com) (Dec) (77) Brilliant light red. Somewhat ruffled. Lower petals rich velvety darker shade.

**Regent** Palmer strain. 1936 Introduction. See page 16.

**Reverie** Palmer strain. See page 13.

**Rideau** Palmer strain. See page 13.

**Roderick Dhu** (STEPHEN) (Dec) Immense rose pink. Something like Mrs. Pendleton but a much softer shade and more beautiful. You can easily get six inch flowers on this variety.

**Roi Albert** (LEMOINE) (Dec) (91) Smoky coppery salmon. 5-6 good size blooms open. Soft pleasing color. One of the most popular smokies.

**Roi Soleil** (VELTHUYS) (Dec) (Com) Very early. Very large light yellow with red lines in throat. Well worth while.

*"Have been a customer for several years and have always had good bulbs and been used very satisfactory."*  
—FANNIE FARROWS, Conn.

*"I wish at this time to thank you for your promptness in handling my order last spring and for the extra bulbs you sent. They sure were beauties. In fact all that have bloomed so far are far superior to any glads I ever raised before."*  
—MRS. T. B. BIGELOW, Mich.

*"My gladiolus were the most beautiful ones I had ever seen. Have given your address to several. Expect to place another order with you next spring."*

—Miss B. KARNES, Virginia.

**Rose Marie Pfitzer** (PF) (EX) Ruffled white tinted pink. Peach and cream color which varies somewhat. Sometimes is rather pale. Eight or more immense closely set blooms open at a time. Makes a wonderful spike. Rather slow propagator.

**Rose Mist** (FISCHER) (Prim. Grand.) (Dec) (80-90) Old rose with buff showing through. 5-8 well spaced blooms open on a very tall straight spike. A fine decorative variety.

**Rose Standish** (KINYON) (Dec) (Com) Beautiful clear shade of light rose pink. Five or six wide open ruffled blooms of good size well placed on straight slender spike of eighteen or more buds. The buds of this variety are very beautiful with their delicately ruffled edges. An outstanding variety. Something appealing about it.

This variety was just introduced last year. I consider it one of Mrs. Kinyon's best. A beautiful basket glad or for florist work.

**Rose Wings** (CROW) (Dec) (Landscape) (75-80) Rosy carmine deepening toward the edges and with a deeper velvety lip. A fine gold line edges the petals. Blooms are medium size, wide open and slightly ruffled. Straight, slender stems of medium height with 4-6 blooms open.

One feature of this variety is the dark green foliage and stems tinged with dark rose, something I have never seen in any other variety. This is a very beautiful decorative variety and should become immensely popular where people want this color. Makes a beautiful basket or vase.

"I liked Rosewings very much."

—FRED M. CASSEBEER, N. Y.

**Rosex** Palmer strain. See page 13.

**Royal York** 1936 Palmer Introduction. Premium bulb this year. See page 17.

**Rusty** (KINYON) (EX) (COM) (75-80) Yellow overlaid with hairlines of scarlet. Gives the effect of deep orange. Yellow blotch on lower petal. 6-8 large well placed blooms open on long spike. An unusual color and I think will be very popular both as a florist variety and for the home garden. I don't know of anything better in this color for exhibition. Just the color the florists want in the fall.

**Sahara** Palmer strain. See page 13.

**Salbach's Orchid** (SAL) (Dec) (Com) Somewhat similar to Minuet but more pink in it. Several very beautiful well placed somewhat ruffled blooms open at a time. A beautiful variety.

**Salbach's Pink** (SAL) (Com) Late. Good size wide open geranium pink with soft carmine lines in throat. Long spike with six or more blooms open. With me sometimes blooms are not well placed. A very heavy stem.

**Salmon Emperor** (ROOZEN) (Dec) Ruffled salmon orange with dark feather. Looks like a seedling of Pfitzer's Triumph. Very pretty but inclined to have short spikes.

*"The Netherland Prince and Debonair which you put in as extras in our 1934 order have been wonderful and they with Pelegrina have increased remarkably well for us. Every visitor to our place has had a word of praise for the former two."*

—ALBERT W. DAVIDSON, Calif.

"I assure you what I received from you came in good condition. Very clean bulbs and all true to name—another good reason why I like to deal with you."

—ARMAND POIRIER, N. H.

**Saraband** (SAL) (Dec) (100) Rich velvety bordeaux or deep mulberry, straw yellow blotch. An unusual and beautiful color. Good size. Very desirable.

**Scarlet Bedder** (SAL) (Prim. Grand.) (Com) (Dec) (78) Beautiful soft yet glowing scarlet. Distinctive and beautiful shade.

**Scarlet Wonder** (GROFF) (Dec) Very large light red. Popular old red.

**Schubert** (PF) (Dec) (Com) Creamy yellow with vivid scarlet blotches. Very showy and looks like one that may become very popular.

**Schwaben Girl** (PF) (Dec) (Com) Early. Pure pink self color. 7-8 large beautiful blooms open. All garden visitors noticed this one even at a distance. It may supersede Mrs. Sisson as a commercial.

**Senorita** (SAL) (Dec) (Landscape) (90) Large yellow shading to orange with red markings on bright orange lower petals. A short grower and blooms often badly placed but it is exceedingly showy.

**Silversheen** (SYMONS) (EX) (Com) Glowing salmon pink with a white tongue on lower petals. Tall, strong grower with up to ten flowers open on a strong spike. A fine variety.

**Smiling Maestro** (CHRIST) (Dec) Large deep salmon rose flaked brown. Several open. This is considered as one of the very best Christ varieties. Better try this one.

**So Big** (KINYON) (EX) (Com) (80-85) Deep rose pink with violet feather on lower petal. 6-8 immense blooms open on tall, straight spike. Can be grown wonderfully well.

I have not grown this myself but saw it in Mrs. Kinyon's garden this past season and thought so much of it that I have bought a half interest in it.

**Solveig** (DECORAH) (Dec) Immense ruffled white with small cerise blotch. 5-7 open. Can be grown wonderfully well but needs first class culture to get it good. Rather slow propagator.

**Sonatine** (PF) (Com) (Dec) (90-95) Tall growing light pink often flaked, with small red blotches. Good size blooms.

**Spirit of St. Louis** (MUELLER) (Com) (80-85) Good early orange saffron. 6-8 medium size blooms open on a long spike. A good orange.

**Spray of Gold** Palmer strain. See page 14.

**Star of Bethlehem** (PF) (Dec) Very large white which some growers consider the finest white on the market. Not so fast a propagator as some but very big spikes can be grown.

**Star Prince** (CHRIST) (Dec) Immense light pink.

"Duna, Pelegrina, Picardy, Bill Sowden, Wurtembergia, Com. Koehl and Rapture all had six inch blooms. Lindsta and Wasaga were very beautiful and Wasaga had a 5½ inch flower. I want to get more of Palmer's varieties for next year."

—CHESTER L. REARICK, Pa.



*"I am sending a small order for gladiolus this fall as I don't want to wait until spring like I did this year and find that you are sold out of all the ones I want.*

*"The gladiolus I received from you in 1934 were the finest bulbs and the finest gladiolus I have ever grown."*

—MRS. LEO HARRIS, Ind.

**Stuttgartia** (Pf) (Dec) (75-80) Bright orange red. Very strong and sturdy grower. I like it.

**Sultan** (CROW) (Ex) (Com) Deep rose. 6-8 very large ruffled blooms open with several buds showing color. Tall, strong grower. Good propagator. Can be grown very fine. Should become extremely popular.

**Sunset Cloud** (STEVES) (Dec) (Com) Early midseason. White overlaid with and shaded pink toward the edges. Several large well placed blooms open. One of the very best Steves varieties. This has proven to be very good here. Looks to me like a coming commercial variety. Good strong grower.

**Sunshine Girl** (STEVES) (Prim. Grand.) (Dec) (82) Clear geranium pink with a yellow throat. 7-8 well placed blooms open. A fine variety except that the stems often crook.

**Sunshine Susie** (STEVES) (Com) (Dec) Extremely early orange slightly tinted pink. Deep orange yellow in throat. Several good size ruffled blooms open. Very tall, straight stems. Should become valuable as an early commercial.

**Sword of Mahomet** (ELLIS) (Dec) (92) Large massive smoky brown. 6-8 blooms open. Always very popular.

**Symphony** Palmer strain. See page 14.

**Takina** (BURNS) (Ex) Immense purple of an odd shade. One of the new giants from New Zealand. A fine propagator. Said to be the largest variety in existence, producing eight inch flowers under good field conditions.

**Teresa** (CHRIST) (Ex) (Com) Medium size pink with a yellowish tinge and yellowish throat. Several open at a time. Very pretty.

**The Mogul** Palmer strain. 1936 Introduction. Premium bulb this year. See page 17.

**The Moor** (CROW) (Ex) (80) 8 good size well placed deep rose red blooms open. Somewhat ruffled. A beautiful variety but needs good culture to get long spikes. Can be grown wonderfully well.

**The Orchid** (SPRAGUE) (Prim. Grand.) (Dec) Shape and color something like a lavender orchid. Badly hooded. Nice for its kind.

*"You may be interested in how the bulbs performed during the season so here are my opinions after this past season of the varieties bought of you.*

*"Maid of Orleans is the best white I have grown. Pelegrina the best of the darker blues. King Arthur is all you say it is. I liked Netherland Prince, Red Lory and Wurtembergita but most of all I liked the Palmer varieties! Picardy of course but it will only be repetition to say its the best—everyone has said it. Bagdad did wonderfully well this season. Rapture is next in my favorites, beautiful."*

*"I want to take this opportunity to thank you for your fine bulbs which I have purchased from you in the past. Also for your generous extras. I have never had bulbs from you which were not true to name and which did not give fine spikes or produce healthy bulbs the following season."*

—J. V. MILLER, N. Y.

*"I want to tell you what wonderful blooms I had from Sunshine Susie, Orange Sovereign and Netherland Prince.*

*"The colors in these gladiolus were most beautiful."*

—MRS. A. WELLMAN, N. Y.

**3Lo** (BURGESS) (Ex) (Com) Rose slightly flecked deeper with carmine blotch on cream ground. Have not bloomed this myself but understand it is a very large variety with up to 12 blooms open on a strong stem.

**Tiger** (K) (Dec) (78) Smoky blue flaked salmon red. Five or more open. One of the best in its color class.

**Tiger King** (K) (Dec) (81) Somewhat similar to Tiger but darker color.

**Tobersun** (AUSTIN) (Ex) (Com) (100) A late yellow somewhat larger than Golden Dream but with me doesn't grow so tall. Beautiful color. 7-8 blooms open. One of the best.

**Troubadour** (PF) (Ex) (Com) (85) Beautiful clear purple. Tall grower with long spike of bloom with six or more open. I consider this the best clear purple variety.

**Vagabond Prince** Palmer strain. See page 14.

**Wasaga** Palmer strain. See page 14.

**W. H. Phipps** (D) (Ex) (Com) (112) Light rose salmon. Formerly this variety opened up the longest spike of any variety known but late years for some reason it seems to be difficult to get a long spike on it. Where formerly it would open up 12-18 blooms on a spike of 24 or more buds it now often produces short stubby spikes though with eight or ten blooms open at a time.

**Winged Victory** (BRIGGS) (Dec) Immense light pink. Have had it eight inches across one way but it is much wider than high.

**Wurtembergia** (PF) (Com) (Dec) Fiery scarlet with cream white throat. Immense blooms on a very tall always straight spike. The most dazzling red you can imagine. One of the "must haves" for your garden and should become a good commercial. A variety that stops everyone. The only successor to Dr. Bennett as a cut flower I have seen.

**Yvonne** (KRELAGE) (Ex) (Com) (78) Blush white or very pale pink with soft cerise spot in throat. 6-8 very large blooms on a tall, strong growing plant. A wonderfully fine variety.

*"My gladiolus have been blooming for the past six weeks and everyone who has seen them has proclaimed them the prettiest glads they have ever seen. They certainly have done wonderfully well and I wish to thank you very much for the wonderful extras you sent. When I read your description of Mywag I was rather skeptical of whether or not it could be as beautiful as you claimed but it certainly has lived up to its claim for beauty. And the bulb of The Moor was certainly the most beautiful deep rose red glad I've ever seen. It had two enormous spikes with twelve blossoms open on one spike and ten open on the other at one time and it had very beautiful ruffled blooms. "Wurtembergia is certainly a dazzling variety when the sun hits it but for sheer beauty nothing in my opinion beats Mrs. T. E. Langford except Picardy."*

—W. KINGSLEY, Conn.

*"I was very much pleased with those glads you selected for me in the spring. They were gorgeous."*  
 —MRS. MARY SHEFFMAKER, MASS.

## GLADIOLUS SEEDS

I have had so many calls for gladiolus seeds that I am listing a few crosses this year for another grower. These seeds are all from carefully hand-pollinated flowers and should give you some good seedlings. However I want it distinctly understood that no one can guarantee results in gladiolus seed. None of the seeds can be guaranteed to produce seedlings that you will like. But the chances are they will and there is always the chance of getting something unusually good or even a world beater. No one can tell till they bloom.

To grow these seeds you simply plant them an inch or inch and a half deep and keep them moist until they germinate. You can do this either with peat moss or with a burlap or other cloth put over the row or by frequent watering. It doesn't matter as long as they are kept moist. They are as easy to grow as many other seeds. There is nothing finicky about their culture. They should produce bulbs this year up to No. 4 size or with good culture sometimes you can get quite large bulbs the first season but do not expect blooms until the second season. Then sometimes the blooms change more or less the second or third time of blooming. A variety is not considered established until you get blooms from bulbets.

Remember no two gladiolus seedlings can ever be alike. Every one is different.

The supply of these seeds is not large and no doubt they will be sold out before spring so it would be well to send in your order at once and give a second or third choice.

**Packages of 25 seeds of any one cross, 50 cents. Order by number.**

No.	Female Parent		Male Parent
3511	Picardy	X	Seestern
3514	Libelle	X	Allegro
3516	Coryphee	X	Rose Marie Pfitzer
3517	Marmora	X	9th Symphony
3522	Vagabond Prince	X	Picardy
3523	Champlain	X	Blue Herald
3531	Sonatine	X	Rose Marie Pfitzer Sdlg.
3539	Rose Marie Pfitzer	X	Aflame
3547	Picardy	X	Miss New Zealand
3557	Rose Marie Pfitzer Sdlg. No. 2	X	Marchen
3558	Rose Marie Pfitzer	X	Golden Goddess
3567	Wasaga	X	Rose Marie Pfitzer
3573	Picardy	X	Moorish King
3574	Comm. Koehl	X	Picardy
3587	Moorish King	X	Dream of Beauty
3512	Rose Marie Pfitzer	X	Picardy
3513	Madame Mounet Sully	X	Rose Marie Pfitzer
3515	Allegro	X	Rose Marie Pfitzer
3521	Apricot Glow	X	Rose Marie Pfitzer Sdlg. No. 1
3524	Bella Donna	X	Blue Herald
3530	Gehemrat Duisberg	X	Allegro
3532	Jonkheer Van Tets	X	Rose Marie Pfitzer
3533	Max Reger	X	Allegro
3535	Ave Maria	X	Pastoral
3536	Mother Machree	X	Rose Marie Pfitzer
3537	Rose Marie Pfitzer	X	Bit of Heaven
3551	Jonkheer Van Tets	X	Heiligtum
3556	Mrs. Sisson	X	Picardy
3559	Tip Top	X	Emile Aubrun
3560	Beacon	X	Tip Top
3561	Emile Aubrun	X	9th Symphony
3563	Jonkheer Van Tets	X	Andreas Hofer
3570	Golden Goddess	X	D. O. X.

*"I had some bulbs of you in the spring. The best bulbs I ever had."*  
 —MELVIN CLINE, Maine.

# VARIETIES BY COLOR

It is very hard to separate varieties of gladiolus into definite color classifications. In the pinks especially it is difficult to separate the salmons, light pink, etc. Some varieties could go into any one of three or four classes. There are a number of different shades of pink that don't have a class by themselves. It is hard to say in just which one of the classes I have here they should go. However I have classified the varieties in my list to the best of my ability.

## DARK RED

Dr. Hoeg  
Ecstasy  
Moorish King  
Morocco  
The Mogul

## MEDIUM RED

Allemania  
Amador  
Bill Sowden  
Cardinal Prince  
Com. Koehl  
Crimson Glow  
Dominus  
Heathfield  
King George  
King of Reds  
Red Lory  
Regent  
Royal York  
27271

## SCARLET

Dr. Bennett  
Excellence  
Red Phipps  
Red Splendor  
Scarlet Bedder  
Scarlet Wonder  
Stuttgardia  
Wurtembergia

## ORANGE

Brightside  
Gay Hussar  
Grand Slam  
La Fiesta  
La Paloma  
Leander  
Lucifer  
Mrs. S. A. Errey  
Orange Butterfly  
Orange Lady  
Orange Princess  
Orange Queen  
Orange Sovereign  
Orange Wonder  
Rusty  
Senorita  
Spirit of St. Louis  
Sunshine Susie  
BC25084

## YELLOW

Amberglow  
Antione  
Bonny Scotland  
Clarion  
Gate of Heaven  
Golden Cup  
Golden Goddess  
Jonquill  
Loyalty  
Miss Bloomington  
Mrs. G. Wade  
Prairie Gold  
Primrose Princess  
Roi Soleil  
Spray of Gold  
Tobersun

## CREAM, BUFF, FLESH

Apricot Glow  
Duna  
Golden Anniversary  
Hercules  
Innovation  
Lotus  
Mrs. T. E. Langford  
Reverie  
Rose Marie Pfitzer  
Sahara  
Schubert  
Wasaga  
Yvonne

## WHITE

Albatross  
J. Van Tets  
Maid of Orleans  
Mammoth White  
Marion Louise  
Mary Elizabeth  
Maunga  
Polar Ice  
Star of Bethlehem

## CREAM WHITE

Dr. Durr  
Escort  
Helen Wills  
Magna Blanca

## WHITE

(With Blotch)  
Margaret Peter  
Mibloom  
Mrs. F. E. Bennett  
Odalisque  
Solveig

## SALMON PINK

Acadia  
Al Smith  
Betty Nuthall  
Coquette  
Coronation  
Gloriana  
Golden Flame  
Hector  
Inspiration  
Joh. S. Bach  
Lady Winsome  
Laughing Water  
Mildred Louise  
Miss New Zealand  
Mrs. Leon Douglas  
Mrs. E. J. Heaton  
Netherland Prince  
Orlando  
Our Selection  
Pfitzer's Triumph  
Picardy  
Rapture  
Rosex  
Salmon Emperor  
W. H. Phipps  
26892  
26121

## LIGHT PINK

Betsy Bob-up  
Betty Co-Ed  
Blushes of Cream  
Carolus Clusius  
Debonair

Edith Mason  
Mrs. P. W. Sisson  
Pearl of California  
Salbach's Orchid  
Sonatine  
Star Prince  
Symphony  
H6141

## PINK

Angelus  
Early Dawn  
Ella May  
Giant Nymph  
Helen Jacobs  
Heritage  
Incense  
Joan Pety  
Lady Eaton  
Lindesta  
Margaret Fulton  
May Davidson  
Miss Greeley  
Peerless Pink  
Phyllis McQuiston  
Prof. Van Slogteren  
Queen Helen II  
Rose Standish  
Salbach's Pink  
Schwaben Girl  
Silversheen  
Sunset Cloud  
Sunshine Girl  
Teresa  
Winged Victory  
26935

## PINK AND SALMON PINK

(With Decided Blotch)

Beacon  
Bleeding Heart  
Camelot  
Cassandra  
Edith Robson  
Emma  
Gladys Clegg  
Mignon  
Moondara  
Mr. Wm. Cuthbertson  
Mywag  
Nerissa  
Nyora  
Philomela  
Premier Henry  
Roderick Dhu

## ROSE PINK

Alayne  
Aflame  
Bagdad  
Benedict  
Cherokee  
Constancy  
Dorcas Aldrich  
Dr. Shook  
Janet  
Littlejohn  
Mrs. Galbraith  
Pinnacle  
Pond Lily  
Pride of Wanakah  
Rose Mist  
Smiling Maestro

So Big  
3Lo  
M7021  
27694

Minuet  
Nancy Ann  
Philip Breitmeyer  
The Orchid

Ramasses  
Takina  
Trouhadour

GRAY  
Marmora

**ROSE RED**  
Dream O'Beauty  
Dr. L. H. Bailey  
Leschi  
Pirate  
Purple Glory  
Rose Wings  
Sultan  
The Moor  
26242

**LIGHT BLUE**  
Allegro  
Ave Maria  
Bella Donna  
Blue Danube  
Blue Triumphant  
Champlain  
Milford  
Mrs. Gertrude Pfitzer

**SMOKY**  
Desdemone  
Emile Aubrun  
Evensong  
Jalna  
Mother Machree  
Rideau  
Roi Albert  
Saraband  
Sword of Mahomet  
Tiger  
Tiger King  
26895  
27585

**PINKISH LAVENDER**  
Berty Snow  
Dr. Moody  
Early Melody  
Honor  
King Arthur  
Lavender Bride  
Mary Frey  
Mauve Magic

**DARK BLUE**  
Aida  
Blue Admiral  
Pelegina

**ODD SHADES**  
Ambrosia  
Bullfinch  
Golden Brown  
Hillhilly  
Vagahond Prince

**PURPLE**  
Chas. Dickens  
Dominus  
Mrs. Chas. A. Stevens  
Paul Pfitzer

## THE FRAGRANT GLADIOLUS INCENSE [Miller]

This is the only gladiolus I have seen that unmistakably has a fragrance and it will be the second patented glad, patent pending now. There is no doubt whatever about the fragrance of this variety and Mrs. Miller, the originator, says that it transmits its fragrance to its seedlings. To encourage hybridizers with this variety with the idea of producing better glads with fragrance she is offering a trophy for the best fragrant seedling produced from Incense to be awarded in 1943. This is to give everyone a chance to do some crossing and produce a fragrant glad and it is allowing time enough for the seedling to become established and be ready for introduction.

In order to secure this variety the buyer must sign the following coupon and send it to me with the price, \$2.00. If you do not wish to mutilate the catalog you can copy this agreement on another sheet of paper and sign it and send it in.

### COUPON

.....193.....

I hereby agree not to sell, give or transfer either the bulbs, seeds or cut flowers of Incense (the fragrant gladiolus) without written permission, for a period of five years.

Bulbs given as gifts will have to be signed for and both the names and address of donor and recipient shall appear on this form.

.....  
.....  
.....  
.....

*"Glad to see you named No. 6142, Symphony. I thought it extra fine. You gave it a good name."*  
—DR. I. H. BRAUNWARTH, Wis.

*"Had lovely blooms from the bulbs received last spring. Want to thank you for the extras especially Bagdad."*  
—MARGARET CHILCOTE, Md.

*"Your bulbs were great."*  
—JOHN J. O'DONNELL, Mass.

## A New Spray---Rototox

The molasses or brown sugar and Paris Green is probably as effective a spray as any it does make a nasty mess on the plants and is not so convenient to use as a commercial spray. Also as sometimes thrip do not bother till late in the season when some varieties are in bloom and others just in bud and you don't want to spray with a sticky mess I want to recommend ROTOTOX. This is an insecticide that is perfectly clean, leaves no sediment on the plants, is harmless to humans and animals but is death to most all insects.

ROTOTOX contains ROTONONE that acts as a stomach poison and PYRETHRUM that is a contact insecticide. Dr. Roark of the Dept. of Agriculture considers Rotonone 15 times as effective as Nicotine and 30 times as effective as Arsenate of Lead. PENETROL (oxidized petroleum carbon, sulfonated) acts as a spreader and carrier for the other ingredients.

Whether you want an insecticide for your glads or for any other insects in your garden I would recommend ROTOTOX. It is about the most up to date insecticide formula on the market.

Prices are as follows: POSTPAID, Terms cash or C. O. D.

Trial oz. . . . .	\$ .35	1 Quart . . . . .	\$ 3.00
8 oz. . . . .	1.00	1 Gallon . . . . .	10.00
1 Pint . . . . .	1.75	5 Gallons . . . . .	45.00

ROTOTOX is not sold in stores. WRITE DIRECT TO THE MANUFACTURERS. *Do not order from me.*

ROTOTOX  
813 Yale Street  
East Williston, N. Y.

THE ROTOTOX CO. publishes a fine booklet which is a complete treatise on thrips. Send 25 cents, coin or stamps, direct to the Company.

Large quantities of Rototox were sold last year and the Rototox Company has hundreds of fine testimonials in regard to it of which the following are fair samples.

*"Fine. It's the best stuff I've ever used. Used it for everything in the garden. 1-200 I think. My brother mixed it for me. Used as a precaution against thrips, though I don't know if we have them here. Made 2 or 3 applications and obtained just about 100% control, as far as I could judge. All the little bugs seemed to lose their appetites at the same time. No treatment. I just packed them in dry peat moss."*  
—MISS LOUISE BEVITT, San Francisco, Calif.

*"Very much pleased with ROTOTOX. Used 1-200 for thrips on Gladioli. Made 6 applications and obtained practically 100% control. Used Naphthalene crystals for 4 weeks in February. I plant about 2,000 Glads each year for my own and my friends' pleasure. Thrip infestation rather bad in 1933-34 especially after Sept. 1. Paris green, brown sugar mixture not satisfactory. Shall order ROTOTOX again next Spring."*  
—CHARLES F. BIGELOW, Providence, R. I.

*"Used Rototox on your catalog recommend and found it just what the doctor ordered."*  
—LESTER G. BROWNELL, Mass.

*"So far have had no thrip. I have sprayed with Rototox every ten days since my glads were six inches high."*  
—M. OAKLEY, N. Y.

*"Entirely satisfactory. Sprayed 3 times at 1-200 for thrips on Glads. Used only as a preventative—no losses. No treatment in storage. Soaked corms in 1-800 solution of Corrosive Sublimate before planting."*  
—CARL WEAVER, East Jordan, Mich.

*"Very good. 4 sprayings at 1 oz. to 1½ gal. water for aphid, leaf hoppers and ants. 90% control. Naphthalene Flakes in storage."*  
—TOM J. WEIBLE, Davidsville, Pa.

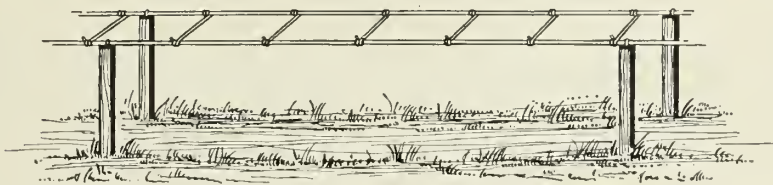
*"Best of any I have used. 4 or 5 sprayings on Glads at 1-200 and some at 1-400. 100% control of thrips. Used Naphthalene Flakes for 2 months before being cured. No treatment when planting."*  
—WILLIAM H. MARTIN, Somerville, Mass.



## MY NEW BULB HOUSE

Well, folks, you forced me to it. Two years ago when I built a large storage shed I thought I was all through building but last year my business was so much better than previously and this year, as my crop was about 50% larger than ever before, I just had to have more room, so tore down my old bulb house and put up this new modern building. It is 36x72 ft., two stories high and has a fine vapor-vacuum heating plant in it. It is thoroughly up to date and with modern conveniences I can handle your orders better than ever before. This building with the second story and basement of the office building, at the left of the picture, I think will be ample storage for some time to come, though this year I did use my house cellar for an over-flow. Now let the orders come and I will take care of them.

## Horticultural Wire Fencing



Here is a wire support for glads that many growers have liked. This support consists of two parallel strands of wire seven inches apart and has cross wires about every six inches. This wire is simply tacked on to the tops of stakes driven into the ground. You can have them any height you want but for glads about eighteen inches is a good height. This might be too high for some short varieties but should be high enough for most kinds. Of course for very tall growing varieties that are inclined to crook the wooden stake is the best support but where glads are planted fairly shallow so as to get the best increase a wire support of this sort is very useful. It keeps the plants right up straight and there is no danger of them falling over into the row. It can be used many years.

Price for a full roll of 500 feet is \$3.00 f. o. b. Joliet, Illinois. For less than a full roll price is 2 cents per foot f. o. b. Burlington. No orders taken for less than 25 feet.

---

*"I was very much pleased with the bulbs I purchased from you last year and many thanks for the extras you sent me."*

—HERMAN EDWARD, Vt.

## Join a Gladiolus Society

If possible be sure to join some gladiolus society even if it is only a local one. By getting acquainted with different growers and hence through an interchange of ideas and experiences you will learn a great deal about growing glads and about new varieties and will thus get a great deal more pleasure out of your flowers.

Here are two national societies that you should join if possible.

AMERICAN GLADIOLUS SOCIETY which publishes a magazine every month from which you will get much greater value than the cost of the annual dues. During the last year three issues have been sent at one time to effect savings in various ways. We hope to remedy this soon as business conditions improve and as the membership increases.

With each bona fide new membership in the A. G. S., not just a change from one member of a family to another, I will give you a bulb of any one of the following varieties: HECTOR, REVERIE, JONQUIL, ROSE STANDISH or BLUE ADMIRAL.

I hereby apply for membership in the American Gladiolus Society, and inclose \$2.00 as annual membership dues, \$1.00 of which is for a year's subscription to the Gladiolus Review.

Mail the application and \$2.00 to  
ROSCOE HUFF, Secretary  
GOSHEN, INDIANA

Name.....

Street and No. ....

City or Town..... State.....

Amateur or professional.....

Recommended by Elmer E. Gove

---

---

The New England Gladiolus Society publishes a Year Book which is generally conceded to be the best publication put out by any gladiolus society in the world. Last year they published a 272 page cloth bound book that sold for \$1.75 in book stores. This year the book is about the same size and fully as good if not better than last year's. It is given free with a \$1.00 membership in the society.

Please enroll me as a member of the  
NEW ENGLAND GLADIOLUS SOCIETY

Mail the coupon and \$1.00 to

G. E. FOLK, Secretary  
OAKDALE, MASS.

Name.....

Street.....

P. O..... State.....

Recommended by Elmer E. Gove



**Below are some books that everyone having a garden should own. I can take your order and have them sent direct from the Publisher.**

I can secure for you any book on any garden subject. **SEND FOR COMPLETE CATALOG.** Add 10 cents per book for postage.

**Gladiolus**, by F. F. Rockwell. Recommended as "the best brief guide on gladiolus growing." It tells how to plant, fertilize, and cultivate; how to grow from seed or bulbs; how to harvest and cure; how to handle for cut flowers; and every other detail needed for success with this popular flower. 45 illustrations, 79 pages. **\$1.25**

**The Book of Bulbs**, by F. F. Rockwell. With this complete and practical book you can get the utmost in beauty from every kind of bulbous plant. Clearly written by one who knows; illustrated with 187 beautiful photographs and instructive drawings. Includes tulips, daffodils, hyacinths, lilies, crocuses, glads, dahlias, peonies, irises, begonias, and scores of other beautiful but not-so-well known bulbs. We recommend it as the best and most complete bulb book. 187 illus., 264 pages. **\$2.00**

**Garden Pools: Large and Small**, by Ramsey and Lawrence. Nothing else can add so much to your garden as a pool, even if it is only a transformed wash tub in the tiniest garden space. How to have one is fully explained in this new book. Its text is so complete and its illustrations are so numerous and practical that you can easily find the type of pool that fits in your garden and learn all about designing, planting and caring for it. 41 illus., 122 pages. **\$2.50**

**The Home Garden Handbooks**, by F. F. Rockwell. A series of pocket-size books, now nine in number, that it is a pleasure for us to recommend because each volume covers its ground so well and concisely. Use them when your seeds or plants arrive; they will show you how to prepare the soil, plant the seed, or transplant. Carry them out to the garden when you cultivate, prune and fertilize, they will save you many steps and help you avoid disappointments. Each volume has from 30 to 70 illustrations and contains about 90 pages. Strong cloth binding, four-color jackets. Price, \$1.25 per volume. The titles now published are:

**Rock Gardens**  
**Dahlias**  
**Irises**

**Gladiolus**  
**Roses**  
**Peonies**

**Evergreens**  
**Shrubs**  
**Lawns**

**Manual of Gardening**, by L. H. Bailey. You can depend on this book to supply you with complete and practical information on planting and landscaping your home grounds. Tells how to make the most of natural features; how to drain, cultivate, and fertilize the soil; how to sow, propagate, transplant, prune, and graft the different classes of fruits, vegetables and flowers. Gives lists of varieties suited for different purposes. 350 illustrations, 539 pages. **\$3.00**

**Around the Year in the Garden**, by F. F. Rockwell. If you are busy and must use every minute of your time in the garden to the best advantage, this book will help you be more efficient. It is arranged in 52 chapters, each telling what to do in the garden every week of the year. It covers the vegetable garden, flower garden, roses, shrubs, berries, fruit trees, insects and diseases, vegetables for winter, pruning, and all other garden operations. 88 illustrations, 350 pages. **\$2.50**

**The Rose in America**, by J. Horace McFarland. A complete guide to successful growing, based on Mr. McFarland's own experience and the exchange of ideas with other enthusiasts while acting as editor for the American Rose Society. Contains the newest information on cultivation, pest control, and varieties. 66 illustrations, 233 pages. **\$3.00**

**The Garden Club Manual**, by Edith R. Fisher. Practical, tested information on every detail of the organization and management of garden clubs, including model constitutions, program suggestions, complete directions for staging flower shows, civic improvement projects, and junior garden clubs. **\$2.00**

**How to Grow Delphiniums**, by L. H. Leonian. An authority. A practical book. 100 pages. **Postpaid, \$1.10**



ROSEX