

**Enjoy
Yourself
in ...**

GEORGIA



**WE
HAVE
VARIETY**

**DEPARTMENT OF STATE PARKS
418 State Capitol**

Atlanta, Georgia



● historical ● recreational ● beauty

Variety

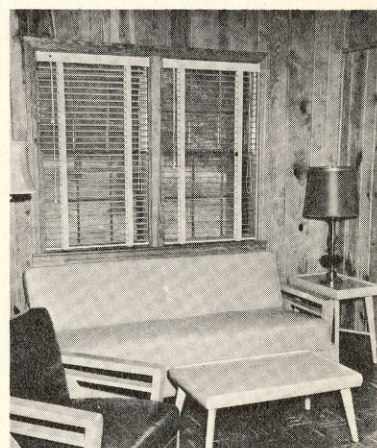
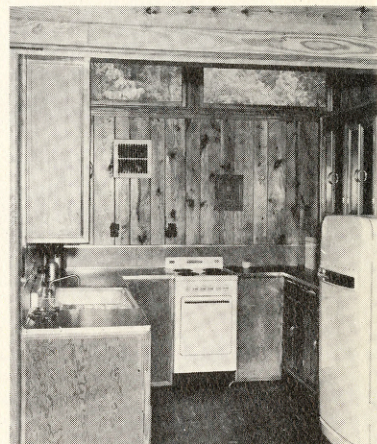
● sports ● camping ● cottages



for DAY, WEEK or MONTH...for FAMILY or for GROUPS we provide the facilities



MAKE RESERVATIONS FOR VACATION COTTAGES THROUGH THE PARK SUPERINTENDENT



COTTAGES

The cottages are completely furnished and equipped.

Ten dollar deposit required for weekly reservations. Five dollar deposit for daily reservation. Rental rates include everything except 3% sales tax. No charge for children two years of age or under, unless roll-a-way bed is required. Roll-a-way beds will be placed in any cottage at rates of \$1.75 per day or \$7.50 per week.

TENT & TRAILER CAMPING RATES FOR THE 1961 SEASON

Superintendents accommodate tent and trailer campers whenever possible. There is a small fee for a Camping Permit; 50¢ per night per site or \$2.50 per week in parks where facilities are not fully developed.

In parks where facilities have been completed, and there are rest rooms and showers provided, the fee will be \$1.00 per night per site or \$5.00 per week per camp site.

All camping permits must be signed by the park superintendent.

Youth groups must have a Pioneer Camping Permit signed by the leader. There is no charge for Pioneer Camping.

All rules and regulations of the Parks Department must be accepted when accepting park facilities.

Park superintendents make all assignments to camp sites.

GROUP CAMPS

A Group Camp Permit will be issued only to groups properly organized and who have an official committee to maintain supervision over the camp. Outline of program must be sent to Superintendent. Group Camp rates: 40¢ per day per person for periods of four or more days; periods three days or less, 60¢ per person per day. May 15 to Sept. 15, there is a minimum charge of 80% capacity. All reservations made by Superintendents.



CHART SHOWING NAME, LOCATION AND FACILITIES OF EACH GEORGIA STATE PARK

NAME OF PARK	Address of Superintendent	HIGHWAYS	COTTAGES	GROUP CAMP	SWIMMING	TENT & TRAILER CAMPING	FISHING	MUSEUM	RESTAURANT	BOATING	SKIING—WATER	MILEAGE TO PARKS FROM:					
												Atlanta	Macon	Savannah	Albany	Augusta	
Alexander H. Stephens	Crawfordville	Ga. 44-15, U.S. 278	*	*	*	*	*	*	*	*	*	100	110	180	217	59	
Amicalola Falls	Juno	Ga. 185-52	*	*	*	*	*	*	*	*	*	85	170	305	255	165	
Bainbridge Park Area	Bainbridge	Highway-City Limits	*	*	*	*	*	*	*	*	*	257	164	247	57	295	
Black Rock Mountain	Mountain City	U.S. 441-23	*	*	*	*	*	*	*	*	*	130	200	165	290	160	
Bobby Brown	Elberton, Rt. 4	Off Ga. 79	*	*	*	*	*	*	*	*	*	115	125	230	235	85	
Chehaw	Albany	Ga. 91	*	*	*	*	*	*	*	*	*	175	110	216	6	215	
Cloudland Canyon	Rising Fawn	Ga. 143-157	*	*	*	*	*	*	*	*	*	120	200	375	295	255	
Crooked River	Kingsland	U.S. 17 Off Ga. 40	*	*	*	*	*	*	*	*	*	325	220	118	185	220	
Elijah Clark	Lincolnton	Ga. 43-U.S. 378	*	*	*	*	*	*	*	*	*	149	120	167	210	50	
Fort Mountain	Chatsworth	U.S. 76-Ga. 52	*	*	*	*	*	*	*	*	*	120	205	365	315	265	
Fort Yargo	Winder	U.S. 29-Ga. 11	*	*	*	*	*	*	*	*	*	60	145	300	265	135	
F. D. Roosevelt	Pine Mtn.	U.S. 27	*	*	*	*	*	*	*	*	*	88	84	275	105	230	
Georgia Veterans	Cordele	U.S. 280-Ga. 30	*	*	*	*	*	*	*	*	*	160	72	230	45	175	
Hard Labor Creek	Rutledge	U.S. 278-Ga. 12	*	*	*	*	*	*	*	*	*	53	72	175	165	105	
Indian Springs	Indian Springs	Ga. 42	*	*	*	*	*	*	*	*	*	50	37	200	145	130	
Jefferson Davis	Irwinville	Ga. 32	*	*	*	*	*	*	*	*	*	215	110	165	65	170	
Kolamoki Mounds	Blakely	U.S. 27	*	*	*	*	*	*	*	*	*	235	135	285	265	285	
Laura S. Walker	Waycross	U.S. 1-84	*	*	*	*	*	*	*	*	*	247	160	110	115	180	
Little Ocmulgee	McRae	Ga. 31	*	*	*	*	*	*	*	*	*	170	77	85	95	135	
Magnolia Springs	Millen	U.S. 25-Ga. 21	*	*	*	*	*	*	*	*	*	200	115	90	210	37	
Nancy Hart	Elberton	Ga. 17	*	*	*	*	*	*	*	*	*	125	135	140	260	70	
Red Top Mountain	Cartersville	U.S. 41	*	*	*	*	*	*	*	*	*	42	127	300	205	200	
Reidsville	Reidsville	U.S. 280-Ga. 30	*	*	*	*	*	*	*	*	*	210	116	55	125	120	
Senoia	Senoia	Ga. 16-85	*	*	*	*	*	*	*	*	*	35	87	185	140	170	
Seminole	Donalsonville	Ga. 285	*	*	*	*	*	*	*	*	*	270	175	260	65	285	
Stephen C. Foster	Fargo	Off U.S. 441	*	*	*	*	*	*	*	*	*	260	175	160	140	230	
Unicoi	Helen	Off Ga. 17-75	*	*	*	*	*	*	*	*	*	100	180	300	255	155	
Victoria Bryant	Royston	U.S. 29	*	*	*	*	*	*	*	*	*	113	155	220	260	115	
Vogel-Walasiyi Inn	Blairsville	U.S. 19-129	*	*	*	*	*	*	*	*	*	110	160	320	290	170	
COLORED STATE PARKS																	
George W. Carver	Acworth	U.S. 41-Ga. 293	*	*	*	*	*	*	*	*	*	48	140	310	220	215	
Georgia Veterans	Cordele	U.S. 280-Ga. 30	*	*	*	*	*	*	*	*	*	162	72	230	45	175	
Lincoln	Millen	Ga. 23-U.S. 25	*	*	*	*	*	*	*	*	*	195	108	92	190	42	
Yam Grandy	Swainsboro	Off Ga. 57	*	*	*	*	*	*	*	*	*	175	84	85	135	50	
Keg Creek	Appling, Rt. 1	Off Ga. 47	*	*	*	*	*	*	*	*	*	165	106	145	220	45	
Fairchild	Donalsonville	Off Ga. 39	*	*	*	*	*	*	*	*	*	268	180	265	72	295	

Operated and Maintained for Your Enjoyment

GEORGIA STATE PARKS
STATE CAPITOL
ATLANTA, GEORGIA

PARK RULES

- Drive slowly.
- Drive only on designated roads.
- Protect flowers, shrubs, and trees.
- Use no intoxicating liquor.
- Use no firearms.
- Help preserve signs and structures.
- Swim only in designated places.
- Deposit garbage in receptacles.
- Fishing subject to Park Rules and State Laws.
- Disorderly or boisterous conduct not permitted.

