

III a (2b)

F/A - 115

TSURUMI

MARSHALLING YARD - KAWASAKI - JAPAN .

17



U. S. CONFIDENTIAL  
(British Confidential)

PHOTO INTELLIGENCE SECTION  
EVALUATION BRANCH  
PHOTOGRAPHIC DIVISION  
AC/AS, INTELLIGENCE

FUNCTIONAL ANALYSIS REPORT NO. F/A-115  
Date 11 April 1945

TARGET NO: 90.17-112  
NAME OF TARGET: TSURUMI MARSHALLING YARD  
LOCATION: KAWASAKI, JAPAN COORDINATES: 35°32'N - 139°41'E  
PHOTOGRAPHY: 

Date	Mission	Print Nos
1 Jan 45	3PR/5M22	2, 9, 10, 11

1. This report has been prepared from a study of aerial photographs and a consideration of evaluated ground information supplied by the Joint Target Group.

2. FUNCTION:  
Most important marshalling yard in KAWASAKI with facilities for reception, sorting and dispatching. The yard has an electrified line that runs through along its West side. Only steam locomotives are used for switching in the make up and storage yards.

3. LOCATION:  
The marshalling yard is located in the city of KAWASAKI, eastern HONSHU, between the TAMA and TSURUMI Rivers. The yard ties into the TOKAIDO main line about a mile to the South; to the North the yard has an outlet to TOKYO over a single track bridge 1300 feet long over the TAMA River.

4. IDENTIFICATION OF FACILITIES:  
Six highway over passes cross the yard at irregular intervals along its entire length with 2.7 miles separating the passes at both extremities of the target. The yard's total trackage is 22 miles of which 1,000 yards several tracks wide at both extremities have been electrified.

1. Highway over pass
2. Signal and switch house
3. Turn table (90'dia.)
4. Water tank (25' dia.)
5. Water storage tank (50' x 110')
6. Highway over pass
7. Storage type building
8. Water storage tank (50' x 110')
9. Freight car maintenance shop
10. Freight car maintenance shop
11. Freight car shed
12. Choke point with gravity hump
13. Possible switch house
14. Possible track control units
15. Make up yard (approximately 23 tracks wide)
16. Small maintenance sheds
17. Freight maintenance shop
18. Highway over pass
19. Possible switch and signal house
20. Freight car storage yard (Min. of six tracks)
21. Freight car storage yard (Min. of six tracks)

- 1 -

U. S. CONFIDENTIAL  
(British Confidential)



F/A-115 Cont'd

22. Possible track control unit
23. Choke point (Presence of hump not verified)
24. Maintenance shed
25. Possible car maintenance and supply shop (50' x 1050')
26. Highway over-pass
27. Highway over-pass
28. Highway over-pass

5. ACTIVITY:

Several steam and electric locomotives are observed in motion in the yard and about 800 freight cars are on the sidings in the make up and storage yards.

It is reported that the yards capacity is 5,000 cars daily.

6. DISCUSSION:

Building No. 25 has RR sidings along both its long sides but no tracks appear to enter it at any point. The buildings location between tracks and inaccessibility to the highways would eliminate its use as a warehouse and make its function appear to be that of maintenance of equipment.

Two large, unidentified plants are adjacent to and at either side of the Marshalling yard at its Northern end. No RR spur lines enter these plants.

ENCL: C.F.L. 750.035

INTERPRETED BY:

W.R. TAPPAN  
Lt. (jg) USNR

JTG CONSULTANT:

N.H. EDDY  
Lt. (jg) USNR

APPROVED BY:

*for* *Walter Harrington*  
WALTER HARRINGTON  
Major, Air Corps  
Chief, Evaluation Branch  
Photographic Division  
Office of the Asst Chief of Air Staff,  
Intelligence



U. S. CONFIDENTIAL  
(British Confidential)

PHOTO INTELLIGENCE SECTION  
EVALUATION BRANCH  
PHOTOGRAPHIC DIVISION  
AC/AS, INTELLIGENCE

FUNCTIONAL ANALYSIS REPORT NO. F/A-115

Date 11 April 1945

TARGET NO: 90.17-112

NAME OF TARGET: TSURUMI MARSHALLING YARD

LOCATION: KAWASAKI, JAPAN      COORDINATES: 35°32'N - 139°41'E

PHOTOGRAPHY:      Date      Mission      Print Nos  
1 Jan 45      3PR/5M22      2:9, 10, 11

1. This report has been prepared from a study of aerial photographs and a consideration of evaluated ground information supplied by the Joint Target Group.

2. FUNCTION:

Most important marshalling yard in KAWASAKI with facilities for reception, sorting and dispatching. The yard has an electrified line that runs through along its West side. Only steam locomotives are used for switching in the make up and storage yards.

3. LOCATION:

The marshalling yard is located in the city of KAWASAKI, eastern HONSHU, between the TAMA and TSURUMI Rivers. The yard ties into the TOKAIDO main line about a mile to the South; to the North the yard has an outlet to TOKYO over a single track bridge 1300 feet long over the TAMA River.

4. IDENTIFICATION OF FACILITIES:

Six highway over passes cross the yard at irregular intervals along its entire length with 2.7 miles separating the passes at both extremities of the target. The yard's total trackage is 22 miles of which 1,000 yards several tracks wide at both extremities have been electrified.

1. Highway over pass
2. Signal and switch house
3. Turn table (90' dia.)
4. Water tank (25' dia.)
5. Water storage tank (50' x 110')
6. Highway over pass
7. Storage type building
8. Water storage tank (50' x 110')
9. Freight car maintenance shop
10. Freight car maintenance shop
11. Freight car shed
12. Choke point with gravity hump
13. Possible switch house
14. Possible track control units
15. Make up yard (approximately 23 tracks wide)
16. Small maintenance sheds
17. Freight maintenance shop
18. Highway over pass
19. Possible switch and signal house
20. Freight car storage yard (Min. of six tracks)
21. Freight car storage yard (Min. of six tracks)

- 1 -  
U. S. CONFIDENTIAL  
(British Confidential)



22. Possible track control unit
23. Choke point (Presence of hump not verified)
24. Maintenance shed
25. Possible car maintenance and supply shop (50' x 1050')
26. Highway over-pass
27. Highway over-pass
28. Highway over-pass

5. ACTIVITY:

Several steam and electric locomotives are observed in motion in the yard and about 800 freight cars are on the sidings in the make up and storage yards.

It is reported that the yards capacity is 5,000 cars daily.

6. DISCUSSION:

Building No. 25 has RR sidings along both its long sides but no tracks appear to enter it at any point. The buildings location between tracks and inaccessibility to the highways would eliminate its use as a warehouse and make its function appear to be that of maintenance of equipment.

Two large, unidentified plants are adjacent to and at either side of the Marshalling yard at its Northern end. No RR spur lines enter these plants.

ENCL: C.F.L. 750.035

## INTERPRETED BY:

W.R. TAPPAN  
Lt. (jg) USNR

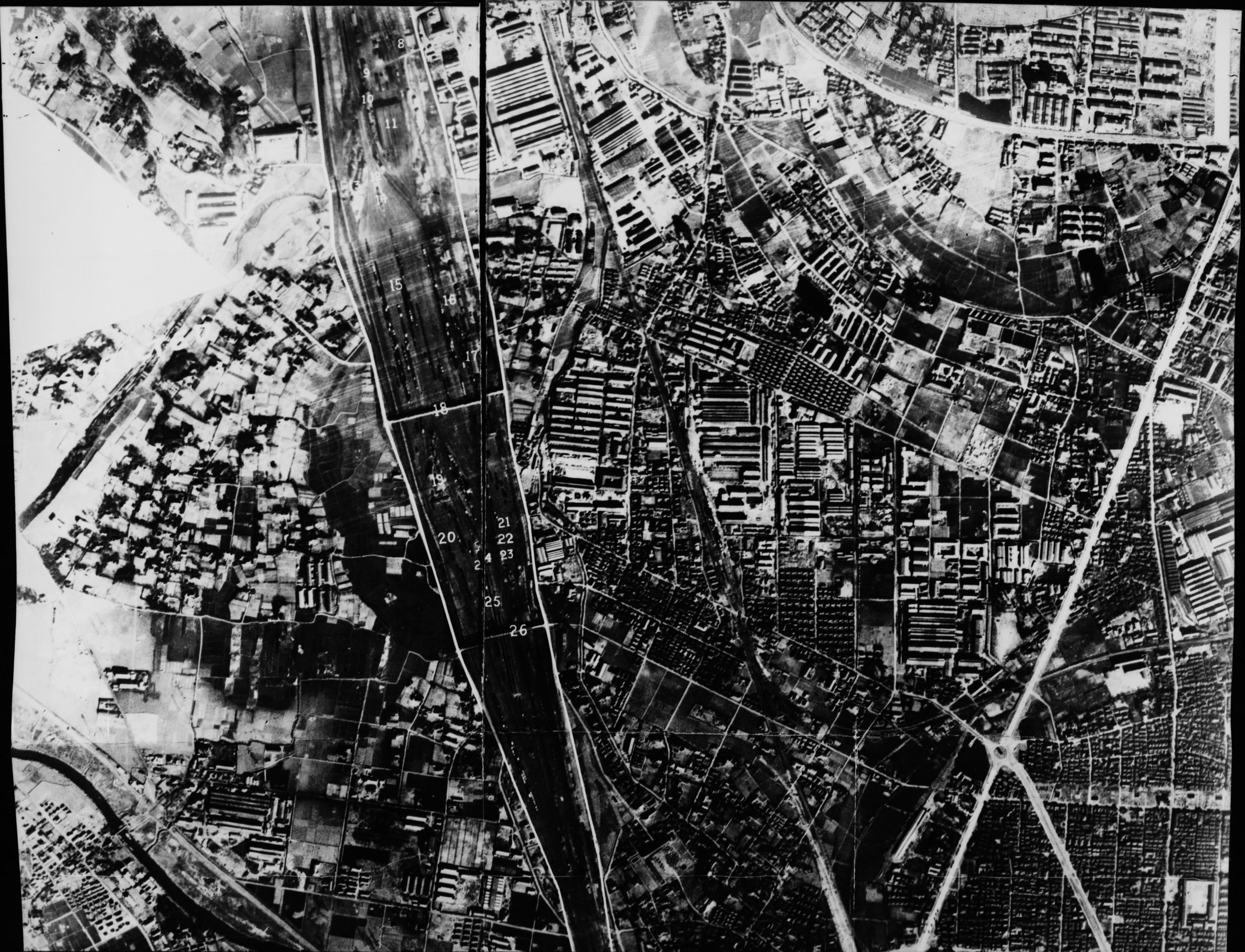
## JTG CONSULTANT:

N.H. EDDY  
Lt. (jg) USNR

## APPROVED BY:

*for* *Walter Harrington*  
WALTER HARRINGTON  
Major, Air Corps  
Chief, Evaluation Branch  
Photographic Division  
Office of the Asst Chief of Air Staff,  
Intelligence





8

9

10

11

15

16

17

18

19

20

21

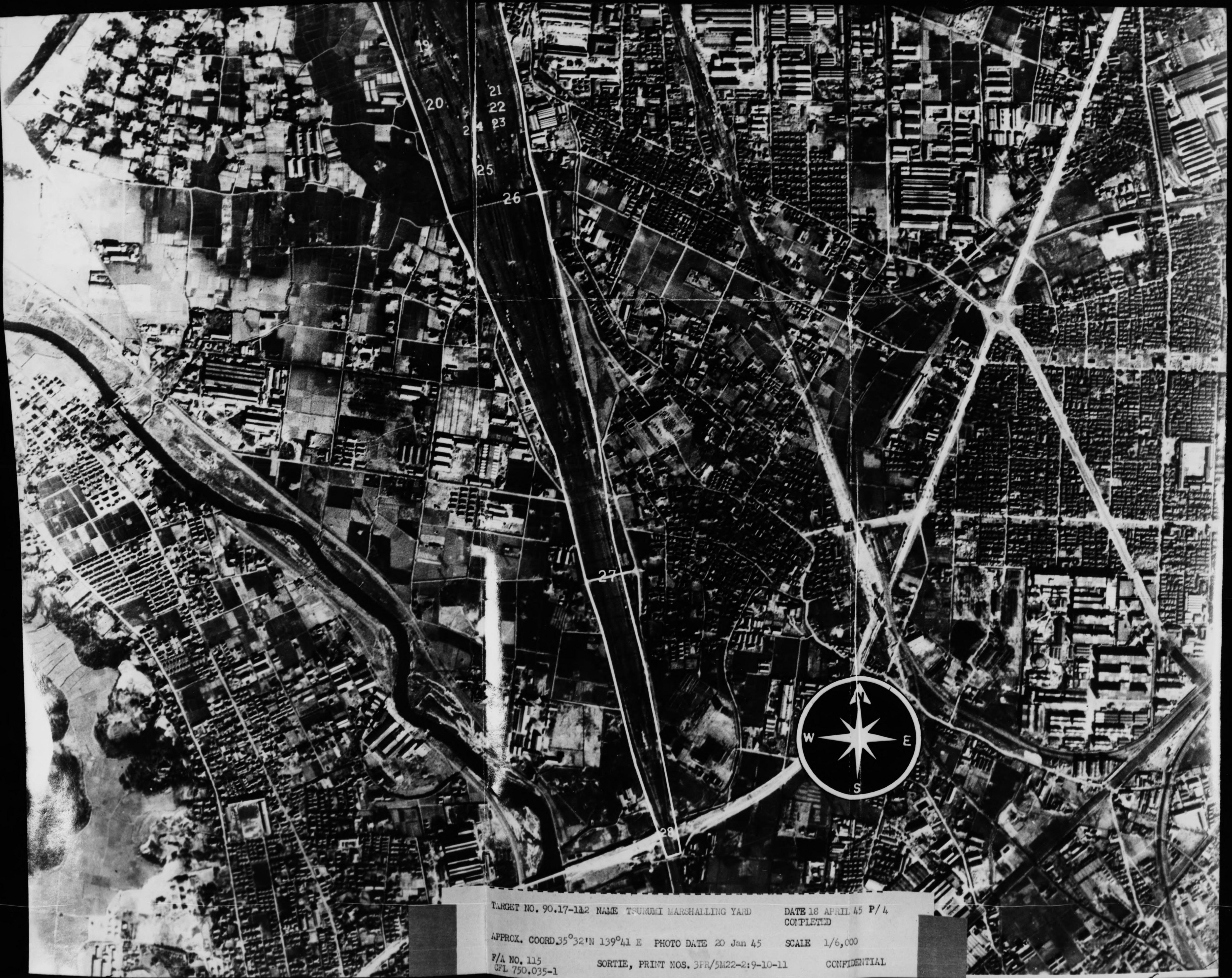
22

23

25

26





TARGET NO. 90.17-1a2 NAME TSURUMI MARSHALLING YARD DATE 18 APRIL 45 P/4  
COMPLETED  
APPROX. COORD 35°32'N 139°41' E PHOTO DATE 20 Jan 45 SCALE 1/6,000  
F/A NO. 115 SORTIE, PRINT NOS. 3FR/5M22-2:9-10-11 CONFIDENTIAL  
CPL 750.035-1





8

9

10

11

12

13

14

15

16

17

18

19

20

21

22

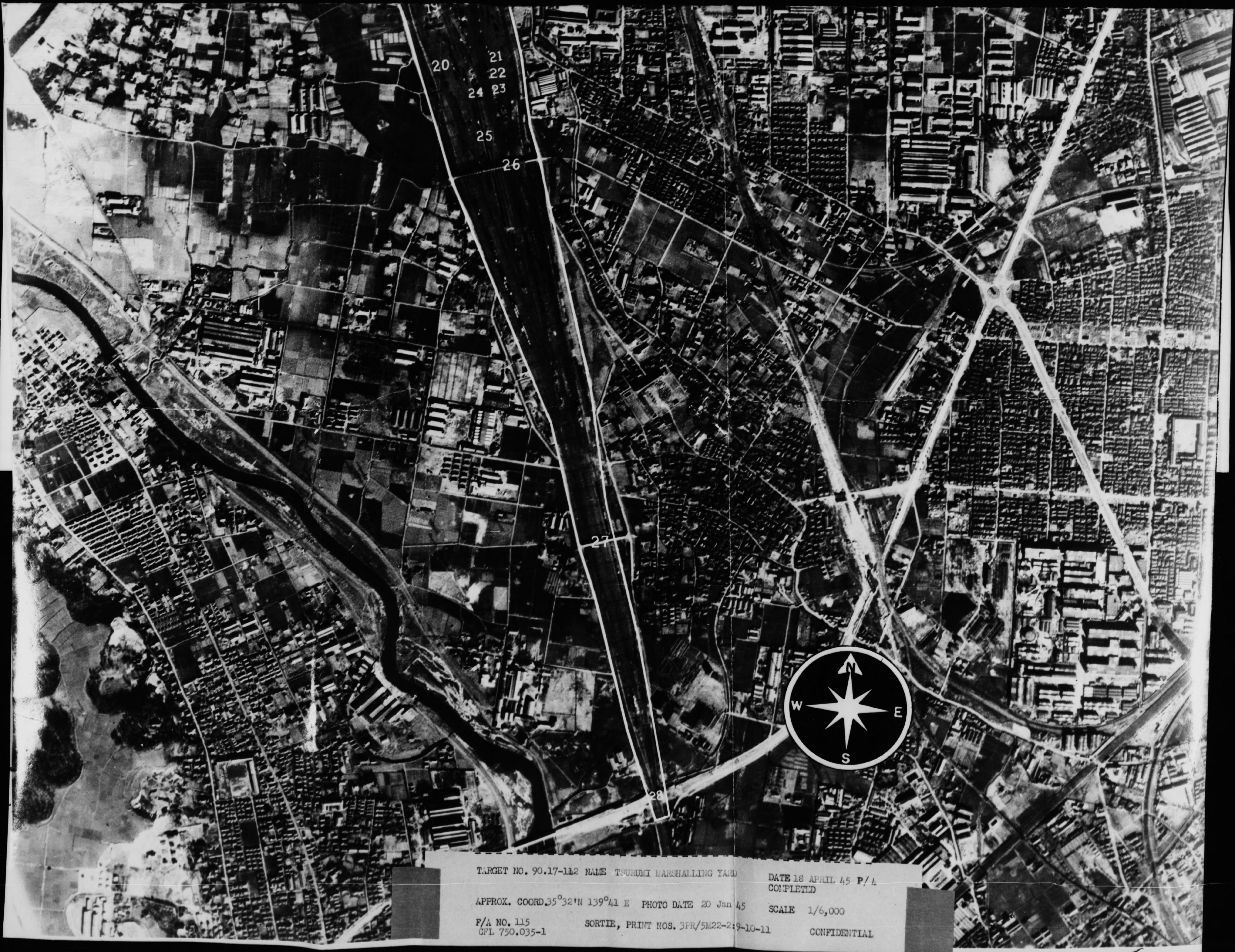
23

24

25

26





TARGET NO. 90.17-112 NAME TSURUMI MARSHALLING YARD

DATE 18 APRIL 45 P/L  
COMPLETED

APPROX. COORD. 35°32'N 139°41'E PHOTO DATE 20 Jan 45

SCALE 1/6,000

F/A NO. 115  
CFL 750.035-1

SORTIE, PRINT NOS. 3PR/5M22-219-10-11

CONFIDENTIAL







TARGET NO. 90.17-112 NALE TSURUMI MARSHALLING YARD

DATE 18 April 45 P/4  
COMPLETED

APPROX. COORD. 35°32'N-139°41' E PHOTO DATE 20 Jan 45

SCALE 1:6,000

F/A NO. 115

SORTIE, PRINT NOS. 3PR/5M22 - 2:9, 10, 11

CONFIDENTIAL

C.F.L. 750.035-2









TARGET NO. 90.17-112 NAME TSURUMI MARSHALLING YARD

DATE 18 April 45 F/4  
COMPLETED

APPROX. COORD. 35°32'N-139°41' E PHOTO DATE 20 Jan 45

SCALE 1:6,000

F/A NO. 115  
C.P.L. 750.035-2

SORTIE, PRINT NOS. 3PR/5M22 - 2:9, 10, 11

CONFIDENTIAL





