

.M6A5
1898



Title -----

Class -----

Imprint -----

Book -----

OCT. 1, 1898.

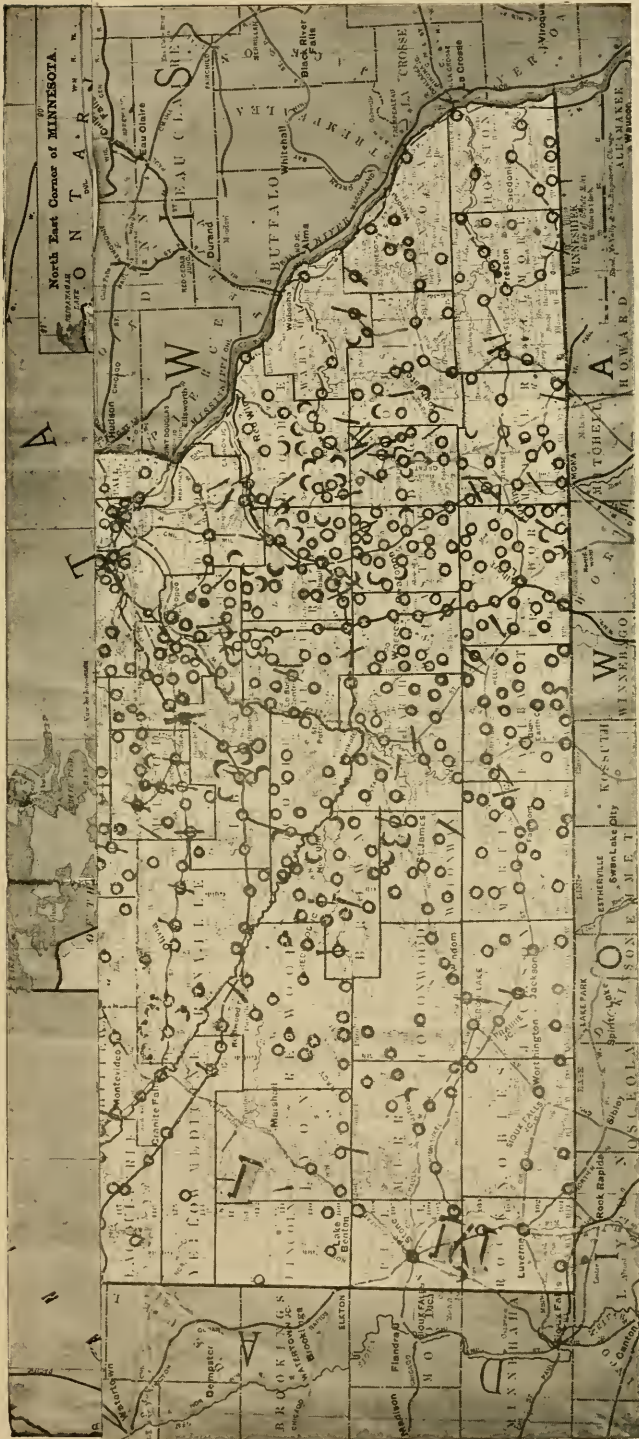
OFFICIAL
STATE CREAMERY AND CHEESE FACTORY
DIRECTORY AND DAIRY MAP
OF
MINNESOTA.



OCT. 1, 1898.

RECORDED
AUG 22 1916

31



MINNESOTA A LEADING DAIRY STATE.
FINE GRASSES. PURE WATER.

MODERN CREAMERIES and CHEESE FACTORIES.
HIGH GRADE DAIRY HERDS.

Best Butter and Cheese Makers on Earth.

State of Minnesota
 Dairy and Food Department,
 St. Paul, Minn.

5176 A 5
 278



OFFICIAL
DAIRY MAP
 OF
MINNESOTA
 O CREAMERIES 664
 (SKIM STATIONS 94
 I CHEESE FACTORIES 90
 DECEMBER 31, 1898.

MINNESOTA A LEADING DAIRY STATE.
 FINE GRASSES. PURE WATER.

MODERN CREAMERIES and CHEESE FACTORIES.
 HIGH GRADE DAIRY HERDS.

Best Butter and Cheese Makers on Earth.

State of Minnesota
 Dairy and Food Department,
 St. Paul, Minn.

Minnesota, Dairy and food dept
"

OFFICIAL STATE

CREAMERY AND CHEESE FACTORY

DIRECTORY AND DAIRY MAP

OF

MINNESOTA.

BERNDT ANDERSON,
STATE DAIRY AND FOOD COMMISSIONER,
ST. PAUL, MINN.

DEC. 31, 1898.

St. Paul

1898

SF 232
M6 A5
1898

PREFACE.

In submitting this "Directory and Official State Dairy Map" I wish to state that extra care has been exercised in compiling the same, and while the correctness is not vouched for, as a whole and in detail, the best possible results have been attained from information at hand.

Very respectfully,
BERNDT ANDERSON,
Commissioner.

70.3.9/21/10
J.H. B. 48

State of Minnesota, Dairy and Food Department,

St. Paul, Dec. 31, 1898.

I beg leave to herewith transmit this publication, and in doing so I wish to say that I am of the opinion that it will fill a long-felt want, and serve to show the world that Minnesota is a leading dairy state, and that the dairy products produced are a high and even grade as to quality, and are of a high commercial value to our state and to all large commercial buyers for the states or for export trade.

Respectfully submitted,

J. A. LAWRENCE,
Assistant Dairy and Food Commissioner.

OFFICIAL STATE DAIRY MAP.

I herewith submit the "Official State Dairy Map of Minnesota," showing all creameries and cheese factories that I was able to get a report of. A limited number of Minnesota creameries are not on the map, for the reason that reports were not sent to this office when applied for, all of which I regret.

J. A. LAWRENCE,
Assistant Dairy and Food Commissioner.

MINNESOTA CREAMERIES.

ALL MODERN CREAMERIES EQUIPPED WITH THE LATEST IMPROVED MACHINERY, PURE WATER, FINE GRASS AND HIGH GRADE DAIRY HERDS.

Minnesota can justly feel proud of her large number of creameries, and the large increase in number in the past two years. The construction as to building and equipment of the same has been on the high progressive lines which go to make up a model creamery up to date. The sixth biennial report of this office shows a total number of creameries as 445. At the close of this biennial period this shows a flattering increase of 219. I wish to call attention to the fact that Minnesota creamery butter carried off the first premiums at the August, September, and the two October scorings at the Trans-Mississippi and International Exposition at Omaha, Neb., 1898, Minnesota taking four first premiums out of five. This butter was scored by one of America's best commercial scorers, Hon. W. D. Collyer, Chicago, Ill. More honors were received for Minnesota creamery butter product and its buttermakers at the National Creamery Buttermakers' Convention at Topeka, Kansas, 1898, at which Minnesota creamery butter won the first premium and gold medal.

I beg leave to herewith submit the four official scorings of Minnesota butter at the Trans-Mississippi and International Exposition at Omaha, Neb., 1898, for the months of August, September, and two scorings in October:

AUGUST CONTEST. OMAHA EXPOSITION.

MINNESOTA BUTTER SCORING.

S. J. Bork, Steele Centre, Minn.....	98
Golden Rule Creamery Association, Owatonna, Minn.....	92
W. C. Lawson, Geneva, Minn.....	93
W. I. Noyes, Moland, Minn.....	97
C. Hansen, Young America, Minn.....	95½

E. E. Simes, Byron, Minn.....	92
E. Quibold, Owatonna, Minn.....	94½
L. K. Hobart, Keno, Minn.....	90
L. J. Stewart, Janesville, Minn.....	93
R. S. Bergsather, Skyberg, Minn.....	97½
Sam Haugdahl, New Sweden, Minn.....	97¾
C. J. Bangs, Blaine, Minn.....	96½
A. Sorensen, Webster, Minn.....	93½
J. F. Dahl, Lindstrom, Minn.....	94½
Mrs. W. D. Richardson, Garden City, Minn.....	94
H. T. Sondegard, Litchfield, Minn.....	95½
J. B. Keachie, Sterling Center, Minn.....	94½
R. T. O'Brien, St. Martins, Minn.....	96
G. B. Parks, Owatonna, Minn.....	96½
Mrs. A. C. Sanders, Owatonna, Minn.....	93
Mrs. J. H. McRostie, Owatonna, Minn.....	95½
H. J. Rosenau, Meriden, Minn.....	96
S. S. Sorensen, Alpha, Minn.....	93½
J. K. Bennett, Clinton Falls, Minn.....	94
Aage Vind, Rochester, Minn.....	96
Geo. Logelin, St. Bonifacius, Minn.....	92½
Mrs. C. H. Robbins, St. Charles, Minn.....	94
Tom Milton, St. Paul, Minn.....	97
Louis Jorgenson, Stewart, Minn.....	95½

SEPTEMBER CONTEST, OMAHA EXPOSITION.

MINNESOTA BUTTER SCORING.

Christ Hanson, Young America, Minn.....	98
J. E. Voss, Owatonna, Minn.....	93
L. R. Hobart, Keno, Minn.....	93½
Jas. J. Lorentson, New Richland, Minn.....	96½
Wisconsin Dairy, Minneapolis, Minn.....	92
C. J. Bangs, Blaine, Minn.....	97½
Wm. Peterman, Waconia, Minn.....	97¼
M. Magnussem, Bee, Minn.....	92
H. T. Sondegard, Litchfield, Minn.....	95¼
Pratt Creamery Co., Pratt, Minn.....	95¼
R. S. Bergsather, Skyberg, Minn.....	96½
F. W. Seaman, Amboy, Minn.....	95½
L. C. Thompson, New Paynesville, Minn.....	97¼
Joseph Wild, Lafayette, Minn.....	95½
Sam Haugdahl, New Sweden, Minn.....	95½
Truse & Gerland, Sleepy Eye, Minn.....	96½
F. O. Johnson, Sacred Heart, Minn.....	96½
H. C. Hansen, Scandia, Minn.....	92
S. P. Bork, Steele Center, Minn.....	96½
John F. Dahl, Lindstrom, Minn.....	94

Joseph Blonty, Morristown, Minn.....	97¼
H. M. Slater, Fairmont, Minn.....	96½
Miss C. H. Robbins, St. Charles, Minn.....	94
J. A. Gitzler, Big Lake, Minn.....	96
Alfred Schultz, Clayton, Minn.....	96
M. Dysthe, Triumph, Minn.....	96
C. F. Christenson, Gibbon, Minn.....	96½
H. J. Rosenau, Meriden, Minn.....	93
Geo. Loglin, St. Bonifacius, Minn.....	96½
Mrs. W. D. Richardson, Garden City, Minn.....	91
L. J. Stewart, Janesville, Minn.....	96
Mrs. J. H. McRostie, Owatonna, Minn.....	91
H. Flagel, Spring Hill, Minn.....	92
J. K. Bennett, Clinton Falls, Minn.....	96½
H. B. Olson, Duelm, Minn.....	96¼
Sam S. Sorenson, Alpha, Minn.....	97¼
W. C. Lawson, Geneva, Minn.....	97¼
Aggie Lind, Pleasant Valley, Minn.....	92
Andrew Sorenson, Webster, Minn.....	97¼
J. A. Hanson, Windom, Minn.....	96
W. I. Noyes, Moland, Minn.....	95¼
Louis Lawrence, Sundown, Minn.....	96

FIRST OCTOBER CONTEST, OMAHA EXPOSITION.

MINNESOTA BUTTER.

Mrs. C. H. Robbins, St. Charles, Minn.....	96½
Mrs. W. D. Richardson, Garden City, Minn.....	95¼
N. R. Lund, Wheatland, Minn.....	96
Christ Hanson, Young America, Minn.....	91½
John Friedmer, Strout, Minn.....	97¾
H. L. Slater, Fairmont, Minn.....	95¾
George Logelin, St. Bonifacius, Minn.....	93
W. I. Noyes, Moland, Minn.....	95¼
Joseph Prouty, Morristown, Minn.....	96
William Peterman, Waconia, Minn.....	95½
A. S. Bergsather, Skyberg, Minn.....	95½
S. P. Bork, Steele Center, Minn.....	98
Andrew Sorenson, Webster, Minn.....	90
H. C. Hanson, Scandia, Minn.....	95¼
O. P. Jensen, Banks, Minn.....	93
C. J. Bangs, Blaine, Minn.....	96
F. O. Johnson, Sacred Heart, Minn.....	94½
H. P. Olson, Duelm, Minn.....	95½
W. C. Lawson, Geneva, Minn.....	95¼
M. Dysthe, Triumph, Minn.....	95½
W. B. Fadden, Plato, Minn.....	95¼
G. T. Eustis, Pratt, Minn.....	91½

L. J. Stewart, Janesville, Minn.....	92½
Aage Vind, Pleasant Valley, Minn.....	95½
John F. Dahl, Lindstrom, Minn.....	95½
S. Sternberg, Irving, Minn.....	93
Thomas Milton, St. Paul, Minn.....	93
H. Springer, Mansfield, Minn.....	93
Alfred Schultz, Clayton, Minn.....	91
Lewis E. Thompson, New Paynesville, Minn.....	95½
J. P. Christianson, Gibbon, Minn.....	92½
I. Flagel, Springhill, Minn.....	94
C. T. O'Brien, St. Martins, Minn.....	92
East Union Creamery Co., East Union, Minn.....	96
A. Hanson, Windom, Minn.....	96
Louis Lawrence, Sundown, Minn.....	95½
Rockville Creamery Co., Rockville, Minn.....	91
J. Gutzler, Big Lake, Minn.....	95¼
T. Sondegaard, Litchfield, Minn.....	96
W. Seaman, Amboy, Minn.....	91
T. Christianson, Moscow, Minn.....	93
James J. Lorentzen, New Richland, Minn.....	95½
Peterman Creamery Co., Hamburg, Minn.....	91
O. Quenvold, Owatonna, Minn.....	95½
M. Martin, Medford, Minn.....	95½
Wm. Thiermann, Merton, Minn.....	93
Sam Haugdahl, New Sweden, Minn.....	92
Wheatland Creamery Co., Wheatland, Minn.....	97
Mrs. J. H. McRostie, Owatonna, Minn.....	95½
E. J. Henry, Albert Lea, Minn.....	94
Louis Jorgenson, Stewart, Minn.....	94
J. E. Voss, Owatonna, Minn.....	91½

SECOND OCTOBER CONTEST, OMAHA EXPOSITION.

MINNESOTA BUTTER.

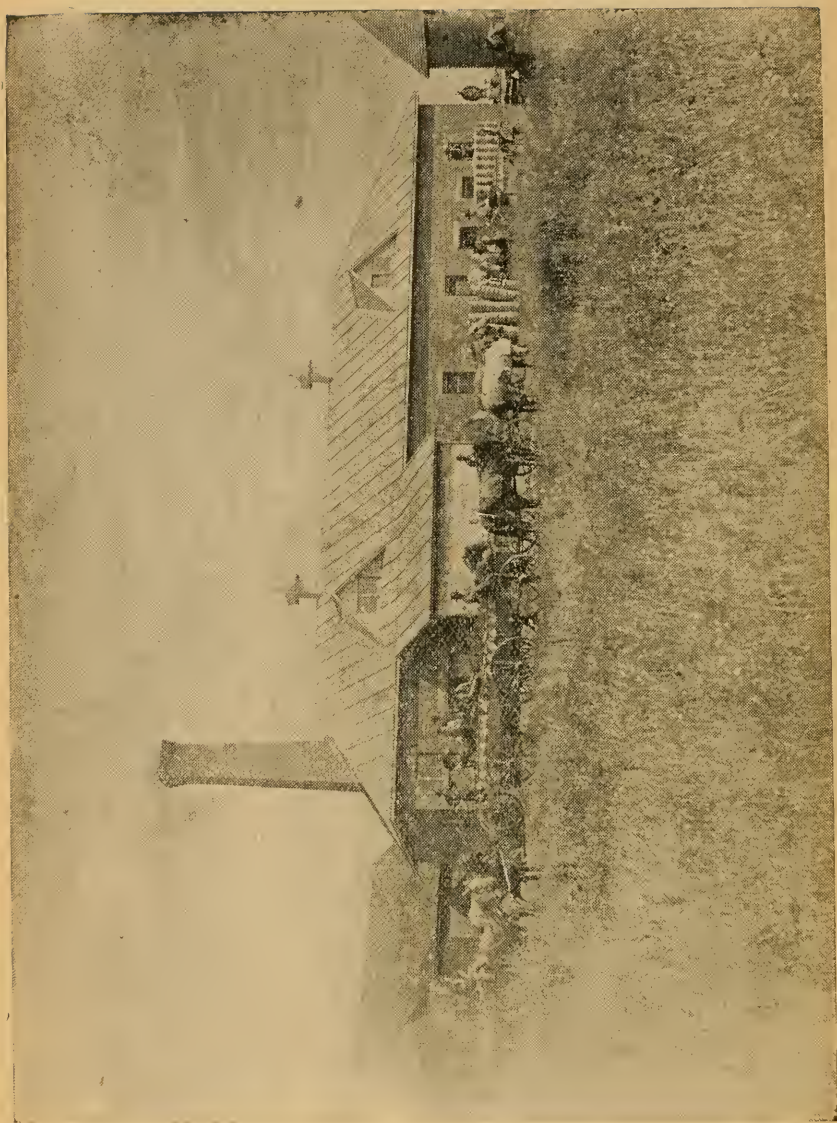
Sam Haugdahl, New Sweden, Minn.....	98
James Emerson, Mansfield, Minn.....	97½
S. S. Sorenson, Alpha, Minn.....	97½
W. I. Noyes, Moland, Minn.....	97½
Wm. Peterman, Waconia, Minn.....	97½
C. P. Christiansen, Gibbon, Minn.....	97¼
N. G. Lund, Wheatland, Minn.....	97
New Germany Creamery, Purity, Minn.....	96½
H. T. Sondergaard, Litchfield, Minn.....	96½
C. J. Bang, Blaine, Minn.....	96½
E. Quivold, Owatonna, Minn.....	96
Aage Vind, Pleasant Valley, Minn.....	96
S. Sternberg, Irving, Minn.....	96
J. A. Hanson, Windom, Minn.....	95½

J. K. Bennett, Clinton Falls, Minn.	95½
H. P. Olson, Duelm, Minn.	95½
M. Dysthe, Triumph, Minn.	95½
A. H. Almquist, East Union, Minn.	95¼
L. J. Stewart, Janesville, Minn.	94½
Geo. Logalin, St. Bonifacius, Minn.	94
Joseph Plenty, Morristown, Minn.	93
Oakland Creamery Co., Oakland, Minn.	93
G. T. Eustis, Pratt, Minn.	92
Mrs. C. H. Robbins, St. Charles, Minn.	92
S. P. Bork, Steele Center, Minn.	91
J. A. Gutzler, Big Lake, Minn.	91

Out of forty-two October entries first scoring thirty entries scored 95 or better, out of a possible 100 perfect points. This percentage held good in the August and September monthly scorings, and second October scorings, thus showing a high and even grade commercial product. Minnesota creamery butter received four first premiums out of the five scorings at the Trans-Mississippi and International Exposition held at Omaha, Neb., in 1898.



MINNESOTA'S DAIRY SCHOOL, ST. ANTHONY PARK.



ONE OF MINNESOTA'S LEADING CREAMERIES.

INCREASE OF CREAMERIES AND CHEESE FACTORIES IN
COUNTIES.

While Freeborn and Steele counties are old in dairying, they may be considered as leading dairy counties of our state. A marked increase is noted in the past two years in the following counties:

Carver	9
Le Sueur	9
Rice	7
Martin	9
Faribault	9
Kandiyohi	7

The three leading dairy congressional districts show an increase:

First district, nine counties.....	17
Second district, eleven counties.....	50
Third district, ten counties.....	55

The third district, being near to the cities of Minneapolis and St. Paul, together having a population of over 407,000, a large amount of milk is shipped from this district to supply the people of the Twin Cities.

CHEESE FACTORIES.

The number of cheese factories in Minnesota as per map will be found to be ninety.† A number of these factories are equipped for making both butter and cheese, or as the best markets for the product may afford.

I wish to call the attention of the cheese purchasers and consumers of the same, to the fact that Minnesota has only one single standard for cheese, which is forty-five per cent. fats to total solids, and is the highest single standard in the United States. This standard is made by law. Every cheese manufacturer is required to brand the cheese before selling same as follows:

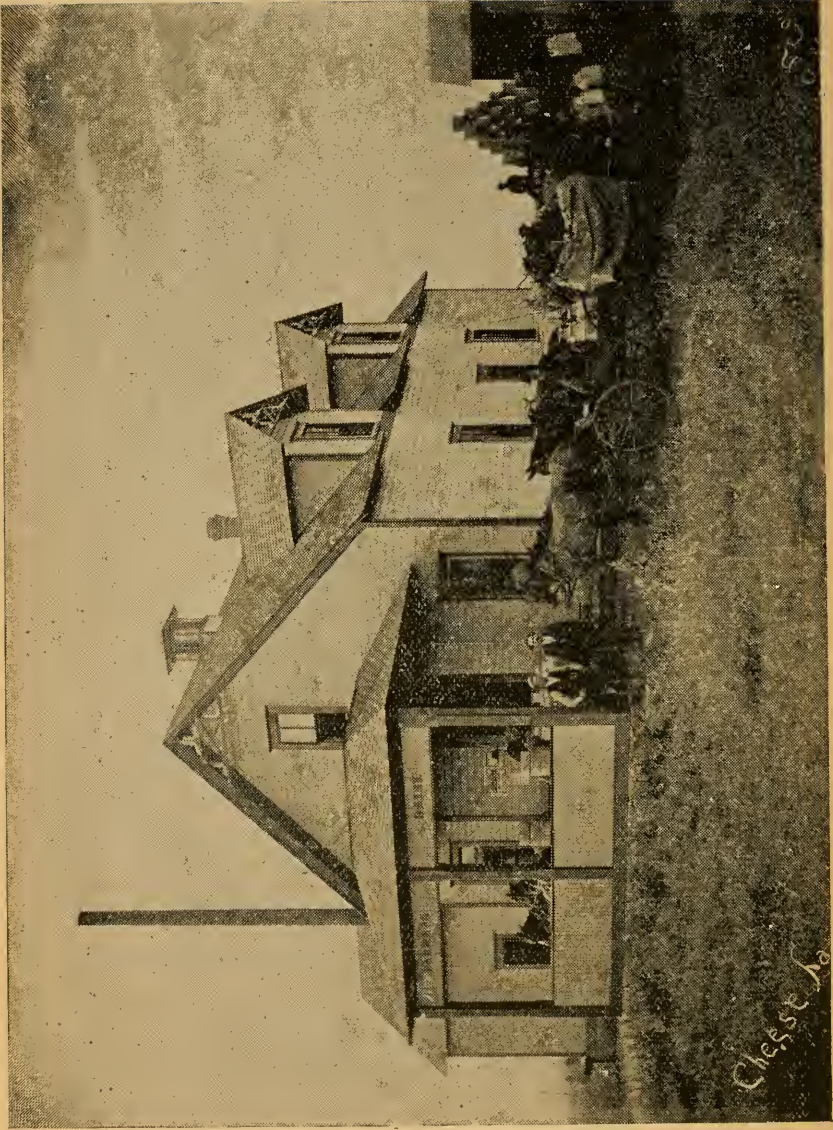
STATE OF MINNESOTA.

No.

FULL CREAM CHEESE.

Minnesota cheese factories are all modern in building, and are equipped with the latest improved machinery, and receive the benefit in the product manufactured of Minnesota's pure water, fine grass and its high grade dairy herds.

†Each factory has a separate registered number, which is registered in the official cheese record of this department.



ONE OF MINNESOTA'S LEADING CHEESE FACTORIES.

ADDRESSING OFFICERS OF CREAMERIES OR CHEESE FACTORIES.

In addressing officers of creameries or cheese factories from this directory, use the title of officer and name or location of creamery or cheese factory, giving postoffice address of creamery or cheese factory. Officers and managers are changing often, hence officers' or managers' names are not given in this publication. In many cases the butter or cheese maker is the manager.

CITY CREAMERIES.

It will be noted that a credit of creameries has been given to Minneapolis and St. Paul cities. Inspection shows that creameries given all churn by power. A large and increasing demand for fresh churned butter has come from consumers in large cities. The cream to a large extent is shipped in by rail, although some of the city creameries separate, while others skim, the cream from the milk left over from the day's sales. In many cases we find large dairies near cities delivering their whole product of milk produced to this class of creameries.

CREAMERY DIRECTORY, 1898.

AITKIN COUNTY.

Location.	Postoffice.	Organization.	No. Patrons.	Remarks.
Attica	Aitkin	Co-operative.....	40	
Lakeside	Maimo	Co-operative.....	34	
Lone Lake.....	Attica	Co-operative.....	35	

ANOKA COUNTY.

Anoka	Anoka	Stock	150	
Hugo	Centreville	Co-operative.....	40	
Golden Lake.....	New Brighton	Co-operative.....	30	Golden Lake.
Ham Lake.....	Ham Lake.....	Co-operative.....	47	
Lino	Lino	Co-operative.....	20	Golden Lake.
St. Francis.....	St. Francis.....	Co-operative.....	80	
Burns	Northern	Co-operative.....	62	

BENTON COUNTY.

Glendorado	Glendorado	Co-operative.....	41	
Duelm	Duelm	Co-operative.....	38	

BECKER COUNTY.

Lake Park.....	Lake Park.....	Private	170	Cuba.
Lake Park.....	Lake Park.....	Private	170	
Audubon	Audubon	Co-operative.....	70	
Cormorant	Cormorant	Co-operative.....	50	

BLUE EARTH COUNTY.

Madison Lake.....	Madison Lake.....	Stock	30	
Butternut	Butternut	Co-operative.....	127	Lake Shore.
Mapleton	Mapleton	Co-operative.....	130	
Vernon Centre.....	Vernon Centre.....	Private	50	
Willow Creek.....	Willow Creek.....	Co-operative.....	70	
St. Clair.....	St. Clair.....	Co-operative.....	76	
Beauford	Beauford	Co-operative.....	149	
Judson	Lake Crystal.....	Co-operative.....	87	Judson.
Danville	Danville	Co-operative.....	65	Star.
Sterling	Sterling Centre.....	Co-operative.....	100	
Lake Crystal.....	Lake Crystal.....	Co-operative.....	30	Lily.
Lincoln	Lake Crystal.....	Co-operative.....	50	Lincoln.
Hamburg	Minn. Lake.....	Co-operative.....	60	Hamburg.
Mankato	Mankato	Co-operative.....	40	
Amboy	Amboy	Co-operative.....	65	
Freedom	Cream	Co-operative.....	125	
Eagle Lake.....	Eagle Lake.....	Private	45	Eagle Lake Cr'y. Co.
Rapidan	Rapidan	Co-operative.....	60	

BROWN COUNTY.

Hanska	Hanska	Co-operative.....	210	Hanska.
Leavensworth	Madelia	Co-operative.....	110	Nelson & Albin.
Stark	Sleepy Eye.....	Co-operative.....	50	Stark.
Sleepy Eye.....	Sleepy Eye.....	Private	80	
Albin	Sleepy Eye.....	Co-operative.....	100	Albin.
Linden	Linden	Co-operative.....	70	Linden & C.
Sigel	New Ulm.....	Co-operative.....	61	Siegal.
New Ulm.....	New Ulm.....	Co-operative.....	120	M. & C.
Springfield	Springfield	Co-operative.....	106	S. & W.
Cobden	Cobden	Co-operative.....	50	
Evan	Fvan	Co-operative.....	85	
Mulligan	Mulligan	Co-operative.....	50	
Springfield	Springfield	Co-operative.....	120	Farm. Co.-op. Cr'y. Co.
Home	Sleepy Eye.....	Not given.....		Home Creamery Co.
Brookville Township.....	Evan	Co-operative.....	76	

CREAMERY DIRECTORY, 1898.—Continued.

BIG STONE COUNTY.

Location.	Postoffice.	Organization.	No. Pa- trons.	Remarks.
Graceville	Graceville	Co-operative.....	60	
Batavia	Clinton	Stock	40	Clinton.

CARLTON COUNTY.

Mahtowa	Mathowa	Co-operative.....	40	
Earnum	Barnum	Co-operative.....	60	

CARVER COUNTY.

Watertown	Watertown	Private	110	
Waconia	Waconia	Private	150	Peterman.
Waconia	Waconia	Private	30	Lake Shore.
Cologne	Cologne	Private	30	
Carver	Carver	Private	40	
Gotha	Gotha	Co-operative.....	30	
Chaska	Chaska	Private	267	Minnesota Valley.
Augusta	Augusta	Co-operative.....	40	
Hamburg	Hamburg	Co-operative.....	50	
Young America.....	Young America.....	Private	98	Lambert & Co.
Norwood	Norwood	Private	53	Norwood Creamery Co.
Mayer	Mayer	Private	90	Mayer Co-op. Cr'y. Co.
Victoria	Victoria	Co-operative.....	75	
Assumption	Norwood	Co-operative.....	50	
Camden Township...	Purity	Private	93	
San Francisco.....	East Union.....	Co-operative.....	85	
Dalgren	East Union.....	Co-operative.....	67	
East Union.....	East Union.....	Co-operative.....	40	

CHIPPEWA COUNTY.

Milan	Milan	Co-operative.....	50	
Sparta	Montevideo	Co-operative.....	60	Black Oak.
Watson	Watson	Co-operative.....	40	
Montevideo	Montevideo	Co-operative.....	35	
Myers	Wegdahl	Co-operative.....	65	
Big Bend	Hagan	Co-operative.....	60	
Clara City.....	Clara City.....	Co-operative.....	34	Clara City Cr'y Co.

CHISAGO COUNTY.

Rush City.....	Rush City.....	Private	60	
Rush City.....	Rush City.....	Private	74	Pioneer Past'ring Co.
Lindstrom.....	Lindstrom.....	Co-operative.....	138	
Shafer	Shafer	Co-operative.....	222	
Kost	North Branch.....	Stock	30	Kost.
Harris	Harris	Co-operative.....	54	
Taylor's Falls.....	Taylor's Falls.....	Co-operative.....	63	Dallas.
Stacy	Stacy	Co-operative.....	60	
Chisago	Chisago City.....	Co-operative.....	95	
Almelund	Almelund	Co-operative.....	100	

CLAY COUNTY.

Hawley	Hawley	Private	60	Berg.
Hawley	Hawley	Co-operative.....	87	
Barnesville	Barnesville	Co-operative.....	150	
Ulen	Ulen	Private	100	

COTTONWOOD COUNTY.

Mountain Lake.....	Mountain Lake.....	Private	100	Farmers'.
Bingham Lake.....	Bingham Lake.....	Stock	50	
Windom	Windom	Stock	70	
Amo	Windom	Co-operative.....	50	Amo.
Westbrook	Storden	Co-operative.....	95	Westbrook.
Storden	Storden	Co-operative.....	60	Highwater.

CREAMERY DIRECTORY, 1098.—Continued.

DAKOTA COUNTY.

Location.	Postoffice.	Organization.	No. Pa- trons.	Remarks.
Lakeville	Lakeville	Co-operative.....	30	
Vermillion	Vermillion	Co-operative.....	42	
Farmington	Farmington	Private	40	
Randolph	Randolph	Co-operative.....	40	

DODGE COUNTY.

Dodge Center.....	Dodge Center.....	Stock	250	35 hand separators.
Verron	Oslo	Co-operative.....	450	Vernon.
Mantorville	Mantorville	Co-operative.....	90	
Wasioja	Wasioja	Stock	300	
Hayfield	Hayfield	Co-operative.....	60	
Claremont	Claremont	Private	100	
Canisteo	Kasson	Co-operative.....	14	Union Springs.
Eden	Cheney	Co-operative.....	50	
Kasson	Kasson	Private	
Milton	Mantorville	Co-operative.....	
Ellington	West Concord.....	Co-operative.....	60	

DOUGLAS COUNTY.

Brandon	Brandon	Co-operative.....	50	
Evansville	Evansville	Private	100	
Osakis	Osakis	Co-operative.....	60	
Nelson	Nelson	Stock	150	
Urness	Urness	Co-operative.....	56	
Garfield	Garfield	Co-operative.....	60	

FREEBORN COUNTY.

Bancroft	Albert Lea.....	Co-operative.....	108	Bancroft.
Riceland	Albert Lea.....	Co-operative.....	165	Riceland.
Albert Lea	Albert Lea	Co-operative.....	138	
Bath	Bath	Co-operative.....	60	Poplar Grove.
Alden	Alden	Co-operative.....	180	
Clark's Grove.....	Clark's Grove.....	Co-operative.....	120	
Freeborn	Freeborn	Co-operative.....	120	
Hartland	Hartland	Co-operative.....	86	
Glenville	Glenville	Co-operative.....	300	
Riceland	Hayward	Co-operative.....	46	Sumner Val.
Hayward	Hayward	Co-operative.....	40	
Manchester	Manchester	Co-operative.....	96	
Marsfield	Mansfield	Co-operative.....	95	
Moscow	Moscow	Co-operative.....	98	
Oakland	Oakland	Stock	40	Oakland.
Clover	Clover	Co-operative.....	45	Clover Valley.
Twin Lakes.....	Twin Lakes.....	Co-operative.....	80	
Emmons	Emmons	Co-operative.....	181	North Star.
London	London	Co-operative.....	50	
Trenton	Trenton	Co-operative.....	80	
Armstrong	Armstrong	Co-operative.....	80	
Riceland	Albert Lea.....	Co-operative.....	110	Riceland Cr'y Co.
Gordonsville	Gordonsville	Co-operative.....	101	Gordonsville Cr'y Co.
Geneva	Monarch	Co-operative.....	48	Geneva Cr'y Co.
Summit Valley.....	Hayward	Co-operative.....	48	

CREAMERY DIRECTORY, 1898.—Continued.

FARIBAULT COUNTY.

Location.	Postoffice.	Organization.	No. Fa- ctons.	Remarks.
Banks	Balks	Co-operative.....	58	Banks Co-op. Cr'y. Co.
Rome	Baine	Co-operative.....	35	
Huntley	Huntley	Co-operative.....	75	M.L.Hougan,Huntley.
Pilot Grove.....	Pilot Grove.....	Co-operative.....	68	
Hamdahl	Hamdahl	Co-operative.....	48	
Brush Creek.....	Oleson	Co-operative.....	80	
Miller	Blue Earth City.....	Co-operative.....	75	
Prescott	Blue Earth City.....	Co-operative.....	46	Prescott.
Blue Earth	Blue Earth City.....	Co-operative.....	70	
Clayton	Clayton	Co-operative.....	90	
Foster	Banks	Co-operative.....	165	
Dunbar	Wells	Co-operative.....	90	
Wells	Wells	Co-operative.....	120	Clark Star.
Delavan	Delavan	Co-operative.....	90	
Minn. Lake.....	Minn. Lake.....	Private	50	
Kiester	Kiester	Co-operative.....	80	Union.
Winnebago City.....	Winnebago City.....	Co-operative.....	120	
Barfist	Easton	Co-operative.....	128	

FILLMORE COUNTY.

Chatfield	Chatfield	Co-operative.....	60	Chatfield Cr'y. Co.
Arendahl	Arendahl	Private	80	
Choice	Choice	Co-operative.....	52	
Brantsberg	Brantsberg	Co-operative.....	New.
Fountain	Fountain	Co-operative.....	300	
Spring Valley.....	Spring Valley.....	Co-operative.....	200	Spring Valley Cr'y.
Harmony	Harmony	Co-operative.....	300	
Rushford	Rushford	Co-operative.....	400	Arctic.
Whalen	Whalen	Private	150	
Lanesboro	Lanesboro	Private	50	Oak Leaf.
Preston	Preston	Private	170	
Mable	Mable	Private	200	
Ostrander	Ostrander	Private	50	

GOODHUE COUNTY.

Belvidere Mills.....	Belvidere Mills.....	Co-operative.....	80	
Forest Mills.....	Forest Mills.....	Private	180	
Kenyon	Kenyon	Dividend	400	Cold Springs.
Kenyon	Kenyon	Private	300	
Kenyon	Kenyon	Stock	225	North Star.
White Rock.....	White Rock.....	Private	210	
Wanamingo	Zumbrota	Co-operative.....	400	Mineola.
Zumbrota	Zumbrota	Stock	250	
Frontenac	Frontenac	Stock	50	
Vasa	Vasa	Private	60	
Stanton	Stanton	Private	80	
Goodhue	Goodhue	Private	150	
Roscoe	Roscoe	Co-operative.....	50	Roscoe Creamery Co.
Cannon Falls.....	Cannon Falls.....	Co-operative.....	60	
Skyberg	Skyberg	Co-operative.....	63	Skyberg Creamery Co.

GRANT COUNTY.

Ashby	Ashby	Private	50	
Lien Township.....	Barrett	Private	260	

HENNEPIN COUNTY.

Minnetristo	Maple Plain	Co-operative.....	60	
Long Lake.....	Long Lake.....	Co-operative.....	35	Minnetonka.
St. Bonifacius.....	St. Bonifacius.....	Stock	75	New Model.
Maple Plain	Maple Plain.....	Co-operative.....	
Minneapolis	13 S. Third St.....	Private	137	Wisconsin Dairy Co.
Minneapolis	917 Nicollet Av.....	Private	24	Rice Co. Milk Co.
Minneapolis	2215 Bloomington Av.....	Private	16	Bloom. Av. Cr'y Co.
Minneapolis	1811 Wash. Av. S.....	Private	23	Northwestern Milk Co.
Minneapolis	786 Adams St. N. E.....	Private	20	Chas. Elofson.
Minneapolis	1218 Fourth St. S.....	Private	146	Minneapolis Milk Co.
Minneapolis	1117 Franklin St.....	Private	15	Star Creamery.
Minneapolis	1500 Franklin St.....	Private	16	Flour City Creamery.
Minneapolis	163 Aldrich Av.....	Private	75	Golden Creamery.
Lyndale	Lyndale Av.....	Co-operative.....	85	Ind. Co-op. Cr'y Co.
Corcoran	Bruschville	Co-operative.....	35	
Eden Prairie.....	Washburn	Co-operative.....	34	
Leoretta	Leoretta	Co-operative.....	30	
Cermania	Bruschville	Co-operative.....	60	

CREAMERY DIRECTORY, 1898.—Continued.

HOUSTON COUNTY.

Location.	Postoffice.	Organization.	No. Pa- trons.	Remarks.
Freeburg	Freeburg	Private	200	
Houston	Houston	Private	80	
Spring Grove.....	Spring Grove.....	Private	250	
Wilmington	Wilmington	Private	300	
Bee	Bee	Co-operative	70	Honey.
La Crescent.....	La Crescent.....	Private	60	Scotch.
Caledonia	Caledonia	Private	20	
Eitzen	Eitzen	Co-operative	50	

HUBBARD COUNTY.

Park Rapids.....	Park Rapids.....	Co-operative.....	New.
------------------	------------------	-------------------	-------	------

ISANTI COUNTY.

Cambridge	Cambridge	Co-operative.....	106	
Spring Lake.....	Spring Lake.....	Co-operative.....	91	
Spencer Brook.....	Spencer Brook.....	Co-operative.....	63	Sp'cer B'k Co-op. C.Co.
Spring Lake.....	Spring Lake.....	Co-operative.....	124	Spring Lake Cr'y Co.
Athens	Athens	Co-operative.....	37	
Stansfield	Braham	Co-operative.....	50	

JACKSON COUNTY.

Wilder	Wilder	Private	40	
Heron	Heron	Private	20	
Jackson	Jackson	Private	20	
Lakefield	Lakefield	Private	50	
Sioux Valley.....	Sioux Valley.....	Co-operative.....	40	
Windom	Windom	Co-operative.....	100	Christiana.
Petersburg	Petersburg	Co-operative.....	75	
Minnesota	Lakefield	Co-operative.....	40	Plum Creek Cr'y Co.
Rost Ty	Lakefield	Co-operative.....	49	
Christiana	Bergen	Co-operative.....	75	
Enterprise	Jackson	Co-operative.....	40	
Okakenna	Okakenna	Co-operative.....	42	New.
Wisconsin	Alpha	Co-operative.....	55	

KANDIYOHI COUNTY.

Atwater	Atwater	Co-operative.....	109	
New London.....	New London.....	Stock	60	
Lake Elizabeth.....	Lake Elizabeth.....	Co-operative.....	68	
Lake Lillian.....	West Lake Lillian.....	Co-operative.....	48	West.
Pennock	Pennock	Co-operative.....	50	Moeny.
Irving	Irving	Co-operative.....	155	Gold Mine.
Warner	Warner	Co-operative.....	50	Scandia.
Kandiyohi	Kandiyohi	Co-operative.....	64	Central.
Lintonville	Lintonville	Co-operative.....	37	
Norway Lake.....	Norway Lake.....	Co-operative.....	50	
West Lake.....	West Lake.....	Co-operative.....	60	
Willmar	Willmar	Co-operative.....	82	Svea.
Mamre	Pennock	Co-operative.....	50	Mamre.
Harrison	Harrison	Co-operative.....	23	Harrison Cr'y Co.
Roseville	Lintonville	Co-operative.....	30	
Svea	Svea	Co-operative.....	70	Svea Creamery Co.
Raymond	Raymond	Co-operative.....	60	Raymond Cr'y Co.
Green Lake.....	Spicer	Co-operative.....	40	
St. John.....	Pennock	Co-operative.....	90	New.

KANABEC COUNTY.

Brunswick	Brunswick	Co-operative.....	41	Brunswick Cr'y Co.
-----------------	-----------------	-------------------	----	--------------------

LAC QUI PARLE COUNTY.

Boyd	Boyd	Co-operative.....	66	
Lac qui Parle.....	Lac qui Parle.....	Co-operative.....	50	
Freeland	Freeland	Co-operative.....	25	
Madison	Madison	Co-operative.....	46	Madison Cr'y Co.
Providence	Providence	Co-operative.....	44	
Dawson	Dawson	Private	100	
Dawson	Dawson	Co-operative.....	50	

CREAMERY DIRECTORY, 1898.—Continued.

LE SUEUR COUNTY.

Location.	Postoffice.	Organization.	No. Pa- trons.	Remarks.
New Prague.....	New Prague.....	Private	300	
Le Sueur.....	Le Sueur.....	Private	450	Empire.
Kilkenny	Kilkenny.....	Co-operative.....	110	Diamond Lake.
Cordova	Cordova	Private	60	Lake View.
Waterville	Waterville	Co-operative.....	50	
Le Sueur Center.....	Le Sueur Center.....	Private	20	
Cleveland	Cleveland	Co-operative.....	40	
Montgomery	Montgomery	Private	63	
Tyron Township.....	Henderson	Private	50	
Lexington	Lexington	Private	60	
Heidelberg	Heidelberg	Private	48	
Dresselville	Dresselville	Co-operative.....	60	
Ottawa	Ottawa	Co-operative.....	50	
Kasota	Kasota	Private	15	
St. Henry.....	St. Henry	Private		

LINCOLN COUNTY.

Tyler	Tyler	Private	140	
Hendricks	Hendricks	Co-operative.....	46	
Lake Benton.....	Lake Benton.....	Co-operative.....	80	

LYON COUNTY.

Tracy	Tracy	Co-operative.....	46	
Russell	Russell	Co-operative.....	59	
Garvin	Garvin	Co-operative.....	33	
Balaton	Balaton	Co-operative.....		Whiting Bros.

MARTIN COUNTY.

Fairmont	Fairmont	Co-operative.....	20	Fraser.
Sherburne	Sherburne	Co-operative.....	60	
Granada	Granada	Co-operative.....	110	Center Creek.
Nashville Center.....	Nashville Center.....	Co-operative.....	50	
Welcome	Welcome	Co-operative.....	40	
East Chain Lake.....	East Chain Lake.....	Co-operative.....	92	
Tanhassen	Tanhassen	Co-operative.....	33	Center.
Rutland	Fairmont	Co-operative.....	48	
Lake Belt.....	Lake Belt.....	Co-operative.....	61	
Frasn	Fairmont	Co-operative.....	50	
Triumph	Triumph	Co-operative.....	30	Triumph Cr'y Co.
Rutland Township.....	Fairmont	Co-operative.....	45	
Fraser Lake.....	North Star.....	Co-operative.....	40	
Silver Lake.....	Iowa Lake, Iowa.....	Co-operative.....		
Waverly	May	Co-operative.....		
Rose Lake.....	Fairmont	Co-operative.....	50	
Amber Lake.....	Fairmont	Co-operative.....	32	
North Star.....	North Star.....	Co-operative.....	41	

MEEKER COUNTY.

Grove City.....	Grove City.....	Co-operative.....	100	
Danielson	Grove City.....	Co-operative.....	87	Danielson.
Cedar Mills.....	Cedar Mills.....	Co-operative.....	44	
Strout	Strout	Co-operative.....	90	Star Lake.
Litchfield	Litchfield	Co-operative.....	206	
Manannah	Manannah	Co-operative.....	70	
Dassel	Dassel	Co-operative.....	134	
Greenleaf	Greenleaf	Co-operative.....	60	
Forest City.....	Forest City.....	Co-operative.....	60	
Kingston	Kingston	Co-operative.....	80	
Watkins	Watkins	Co-operative.....	40	
Darwin	Darwin	Co-operative.....	65	
Darwin	Darwin	Co-operative.....	71	Lake Stella.
Eden Valley.....	Eden Valley.....	Co-operative.....	30	
Forest Prairie.....	Watkins	Private	65	
Cedar Mills.....	Cedar Mills.....	Private	35	C. G. McEwen.
Cosmer	Cosmer	Private	35	

CREAMERY DIRECTORY, 1898.—Continued.

MILLE LACS COUNTY.

Location.	Postoffice.	Organization.	No. Pa- trons.	Remarks.
Princeton	Princeton	Stock	100	
Milaca	Milaca	Co-operative.....	37	

McLEOD COUNTY.

Biscay	Biscay	Co-operative.....	47	Wisconsin Dairy.
Hutchinson	Hutchinson	Co-operative.....	150	
Winsted Lake	Winsted Lake	Co-operative.....	40	
Lester Prairie	Lester Prairie	Co-operative.....	50	
New Auburn	New Auburn	Co-operative.....	70	
Glencoe	Glencoe	Co-operative.....	100	
Brownston	Brownston	Private	75	
Stewart	Stewart	Private	150	
Sumter	Sumter	Co-operative.....	40	
Silver Lake	Silver Lake	Co-operative.....	80	
Plato	Plato	Private	114	
Penn Township.....	Brownston	Co-operative.....	...	
Round Grove	Stewart	Co-operative.....	...	
Bergin	Glencoe	Co-operative.....	75	

MORRISON COUNTY.

Royalton	Royalton	Private	60
Upsala	Upsala	Private	60
Elmdale	Elmdale	Private	65

MURRAY COUNTY.

Chandler	Chandler	Co-operative.....	40	Willow Creek.
Avoca	Avoca	Co-operative.....	150	
Holly	Walnut Grove.....	Co-operative.....	25	
Fulda	Fulda	Co-operative.....	48	
Slayton	Slayton	Co-operative.....	40	
Currie	Currie	Co-operative.....	43	
Dovray	Dovray	Co-operative.....	60	
Moulton	Chandler	Co-operative.....	...	

MOWER COUNTY.

Adams	Adams	Private	Red Rock.
Brownsdale	Brownsdale	Stock	75	
Waltham	Waltham	Co-operative.....	100	Nevada. Red Oak Grove.
Grand Meadow.....	Grand Meadow.....	Co-operative.....	300	
Nevada	Rose Creek.....	Co-operative.....	66	
Corning	Corning	Co-operative.....	80	
Leroy	Leroy	Co-operative.....	100	
Austin	Austin	Stock	33	
Lansing	Lansing	Co-operative.....	115	
Rose Creek.....	Rose Creek.....	Co-operative.....	100	
Racine	Racine	Co-operative.....	75	Maple Leaf. Oter Creek. State Line.
Sutton	Sutton	Co-operative.....	70	
Lyle	Lyle	Co-operative.....	84	
Lyle	Lyle	Co-operative.....	90	
Lyle	Lyle	Private	50	

NICOLLET COUNTY.

Courtland	Courtland	Co-operative.....	123	Willow Lawn.
Traverse	Traverse	Co-operative.....	70	
Bernadotte	New Ulm	Co-operative.....	80	L. & B.
New Sweden.....	New Sweden.....	Co-operative.....	40	
St. George.....	St. George.....	Co-operative.....	115	St. George.
Nicollet	Nicollet	Co-operative.....	120	
Bernadotte	Bernadotte	Co-operative.....	80	Riverside.
Norseland	Norseland	Co-operative.....	70	
Lafayette.....	Klosmer	Co-operative.....	40	Oter Creek. State Line.
Belgrade	Kerus	Co-operative.....	65	
Port Ridgley	Port Ridgley.....	Co-operative.....	67	
Oak Lawn	Mankato	Co-operative.....	60	
West Newton.....	St. George.....	Co-operative.....	70	

CREAMERY DIRECTORY, 1898.—Continued.

NOBLES COUNTY.

Location.	Postoffice.	Organization.	No. Patrons.	Remarks.
Worthington	Worthington	Stock	52	
Round Lake	Round Lake	Co-operative	40	
Ellsworth	Ellsworth	Co-operative	98	
Dundee	Dundee	Private	54	
Adrian	Adrian	Stock	60	
Little Rock	Little Rock	Private	52	
Kimbrae	Kimbrae	Co-operative	51	

NORMAN COUNTY.

Rindal	Rindal	Co-operative	200	
Gary	Gary	Co-operative	50	
Home Lake	Twin Valley	Private	40	Norman Cr'y Ass'n.
Lake Ida Township	Ada	Town Line Cr'y. Ass'n.

OLMSTED COUNTY.

Oronoco	Oronoco	Private	110	
Laird	Laird	Private	200	
Rochester	Rochester	Private	200	
Rochester	Rochester	Co-operative	55	
Byron	Byron	Co-operative	250	
Rock Dell	Rock Dell	Co-operative	375	Zumbro.
Genoa	Oronoco	Private	40	
Simpson	Simpson	Co-operative	50	
Eyota	Eyota	Co-operative	60	
Stewartville	Stewartville	Private	100	Graham & Goodman.

OTTER TAIL COUNTY.

Dalton	Dalton	Co-operative	50	
Stod	Stod	Co-operative	75	
Pelican Rapids	Pelican Rapids	Private	49	
Fergus Falls	Fergus Falls	Private	60	Park Region.
Henning	Henning	Stock	36	
Squire	Aastad	Co-operative	54	Aastad.
Battle Lake	Battle Lake	Private	60	
Underwood	Underwood	Co-operative	40	
Parker's Prairie	Parker's Prairie	
Deer Creek	Deer Creek	

POLK COUNTY.

Dover	Dover	Co-operative	30	
Fosston	Fosston	Co-operative	60	
McIntosh	McIntosh	Co-operative	50	North Star.

POPE COUNTY.

Cyrus	Cyrus	Co-operative	150	
Farwell	Farwell	Co-operative	30	Crystal.
Lowry	Lowry	Co-operative	40	
Starbuck	Starbuck	Co-operative	100	
Sedan	Sedan	Co-operative	51	
Villard	Villard	Co-operative	50	

PIPESTONE COUNTY.

Edgerton	Edgerton	Co-operative	75	
Pipestone	Pipestone	Private	16	
Ruthon	Ruthon	Co-operative	40	

PINE COUNTY.

Pine City	Pine City	Co-operative	26	Pioneer.
Pine City	Pine City	Private	25	

CREAMERY DIRECTORY, 1898.—Continued.

RAMSEY COUNTY.

Location.	Postoffice.	Organization.	No. Fabri- cations.	Remarks.
St. Paul.....	St. Paul.....	Private	50	People's Dairy Co.
St. Paul.....	Cor. 9th and Wabasha.	Private	401	Milton Dairy Co.
St. Paul.....	509 St. Peter St.....	Private	125	Wisconsin Dairy Co.
St. Paul.....	392 and 394 E. 7th. St.	Private	32	Minnesota Milk Co.
New Brighton.....	New Brighton.....	Co-operative.....	35	Farm. Co-op. Cr'y Co.
St. Paul.....	Cor. Minnesota and 3d.	Private	45	Crescent Creamery Co.

REDWOOD COUNTY.

Redwood Falls.....	Redwood Falls.....	Co-operative.....	114	
Revere	Revere	Co-operative.....	76	
Lamberton	Lamberton	Co-operative.....	50	Highwater.
Morgan	Morgan	Co-operative.....	70	
Sanborn	Sanborn	Co-operative.....	60	
Sundown	Sundown	Co-operative.....	173	S. & W.
West Line.....	West Line.....	Co-operative.....	33	Granite Rock.
Logan	Logan	Co-operative.....	41	Logan.
Sheridan	Bellview	Co-operative.....	50	Sheridan.
Springfield	Springfield	Co-operative.....	82	Brookville.
New Avon.....	New Avon.....	Co-operative.....	63	
Bellview	Bellview	Co-operative.....	52	Sheridan Cr'y Co.
Johnsonville	Logan	Co-operative.....	29	
Granite Rock	Rock	Co-operative.....	30	Gran. Rock Co-op. Cr'y
Walnut Grove.....	Walnut Grove	Co-operative.....	40	Walnut Grove Cr'y Co.

RENVILLE COUNTY.

Bird Island.....	Bird Island	Private	60	
Hector	Hector	Stock	50	
Olivia	Olivia	Private	125	
Sacred Heart.....	Sacred Heart.....	Co-operative.....	200	Northwestern.
Fairfax	Fairfax	Co-operative.....	72	
Morton	Morton	Co-operative.....	50	
Renville	Renville.....	Co-operative.....	60	
Buffalo Lake.....	Buffalo Lake.....	Co-operative.....	80	
Franklin	Franklin	Co-operative.....	40	
Calro	Fort Ridgley	Co-operative.....	68	
Boone Lake.....	Lakeside	Co-operative.....	57	
Winfield	Winfield	Private	50	
Flora	Florita	Co-operative.....	65	

ROCK COUNTY.

Hills	Hills	Co-operative.....	40	
Luverne	Luverne	Co-operative.....	40	
Hardwick	Hardwick	Co-operative.....	65	

RICE COUNTY.

Dundas	Dundas	Private	75	
Faribault	Faribault	Stock	80	Valley.
Northfield	Northfield	Private	300	
Walcott	Faribault	Co-operative.....	140	Walcott.
Webster	Webster	Co-operative.....	140	
Wheatland	Wheatland	Stock	40	
Forest Township.....	Faribault	Co-operative.....	40	
Roberts Lake.....	Faribault	Co-operative.....	72	
Nerstrand	Nearstrand	Co-operative.....	30	
Lester	Lester	Co-operative.....	60	
Erin	Faribault	Co-operative.....	50	
Richland	Richland	Co-operative.....	115	
Morristown	Morristown	Co-operative.....	60	
Cannon City.....	Dean	Co-operative.....	50	
Wesely	Wesely	Private	80	Wesely Cr'y Co.
Warsaw	Warsaw	Private	50	Waltham Cr'y Co.
Prairieville	Faribault	Co-operative.....	88	
Moland	Moland	Co-operative.....	75	

CREAMERY DIRECTORY, 1898.—Continued.

SCOTT COUNTY.

Location.	Postoffice.	Organization.	No. Pa- trons.	Remarks.
New Market.....	New Market.....	Co-operative.....	60	
Jordan.....	Jordan.....	Private.....	45	Jersey.
Belle Plaine.....	Belle Plaine.....	Private.....	100	
Cedar Lake.....	Cedar Lake.....	Co-operative.....	40	
Shakopee.....	Shakopee.....	Private.....	110	
Marystown.....	Marystown.....	Private.....	70	
Blakely.....	Blakely.....	Crescent Cr'y Co.	This is a skim station.
Lydia.....	Lydia.....	Private.....	46	
Union Hill.....	Union Hill.....	Private.....	75	Jno. Schneider Cr'y Co.
Credit River.....	Credit River.....	Private.....	20	Murest Cr'y Co.
Prior Lake.....	Prior Lake.....	Co-operative.....	52	

SWIFT COUNTY.

Appleton.....	Appleton.....	Stock.....	60	
Benson.....	Benson.....	Co-operative.....	90	
Kerkhoven.....	Kerkhoven.....	Co-operative.....	50	
Swift.....	Swift.....	Private.....	100	
Clontarf.....	Clontarf.....	Co-operative.....	50	

STEVENS COUNTY.

Morris.....	Morris.....	Co-operative.....	58	
Donnelly.....	Donnelly.....	Co-operative.....	35	

SIBLEY COUNTY.

Arlington.....	Arlington.....	Private.....	116	
Henderson.....	Henderson.....	Private.....	300	
Gaylord.....	Gaylord.....	Private.....	200	
Gibbons.....	Gibbons.....	Stock.....	80	
Winthrop.....	Winthrop.....	Co-operative.....	60	
New Rome.....	New Rome.....	Co-operative.....	54	
New Auburn.....	New Auburn.....	Co-operative.....	37	New Auburn Cr'y Co.
Kelso Township.....	Rush River.....	Co-operative.....	62	
Green Isle Township.....	Arlington.....	Co-operative.....	40	
Grafton.....	Stewart.....	Co-operative.....	...	
Tyrone.....	Henderson.....	Co-operative.....	40	

SHERBURNE COUNTY.

Orrock.....	Orrock.....	Co-operative.....	40	
Elk River.....	Elk River.....	Co-operative.....	30	Elk River Cr'y Co.
Clear Lake.....	Clear Lake.....	Private.....	50	
Big Lake.....	Big Lake.....	Stock.....	40	

STEARNS COUNTY.

Avon.....	Avon.....	Co-operative.....	75	
Melrose.....	Melrose.....	Co-operative.....	50	
Richmond.....	Torah.....	Stock.....	496	Richmond.
Cold Springs.....	Cold Springs.....	Co-operative.....	75	
Spring Hill.....	Spring Hill.....	Co-operative.....	...	
New Paynesville.....	New Paynesville.....	Co-operative.....	70	
Albany.....	Albany.....	Private.....	25	
Belgrade.....	Belgrade.....	Private.....	186	
Kimball Prairie.....	Kimball.....	Co-operative.....	50	
Brooten.....	Brooten.....	Co-operative.....	65	
Georgeville.....	Georgeville.....	Co-operative.....	50	
Sauk Center.....	Sauk Center.....	Private.....	74	
New Munich.....	New Munich.....	Co-operative.....	61	
Holdingsford.....	Holdingsford.....	Private.....	185	
Pearl Lake.....	Maine Prairie.....	Private.....	45	Pearl Lake Cr'y Co.
St. Martin.....	St. Martin.....	Co-operative.....	75	Sauk Valley Cr'y Co.
Freeport.....	Freeport.....	Co-operative.....	150	Freeport Cr'y Co.
St. Joseph.....	St. Joseph.....	Private.....	187	
St. Cloud.....	St. Cloud.....	Private.....	52	
Rockville.....	Rockville.....	Co-operative.....	35	

CREAMERY DIRECTORY, 1898.—Continued.

STEELE COUNTY.

Location.	Postoffice.	Organization.	No. Pa- trons.	Remarks.
Clinton Falls.....	Clinton Falls.....	Co-operative.....	45	
Havana	Havana	Co-operative.....	80	
Summit	Blooming Prairie.....	Co-operative.....	90	Union.
Blooming Prairie.....	Blooming Prairie.....	Co-operative.....	200	
Berlin	Berlin	Co-operative.....	70	
Pratt	Pratt	Co-operative.....	110	
Bixby	Bixby	Co-operative.....	60	
Meriden	Owatonna	Co-operative.....	154	Golden Rule.
Meriden	Owatonna	Co-operative.....	87	Crown.
Owatonna	Owatonna	Co-operative.....	80	Gilt Edge.
Cooleyville	Ccoleyville	Co-operative.....	120	Berlin & Surlat.
Summit	Blooming Prairie.....	Co-operative.....	85	Summit.
Steele Center.....	Steele Center.....	Co-operative.....	100	
Medford	Medford	Co-operative.....	67	
Rice Lake	Rice Lake	Co-operative.....	74	
Deerfield	Deerfield	Co-operative.....	56	
Merton	Moland	Co-operative.....	82	
Lemond	Lemond	Co-operative.....	72	

STEVENS COUNTY.

Donnelly	Donnelly	Co-operative.....	35	
Morris	Morris	Co-operative.....	58	

TODD COUNTY.

Long Prairie.....	Long Prairie.....	Private	100	
Clarissa	Clarissa	Stock	50	
Staples	Staples	Co-operative.....	33	

TRAVERSE COUNTY.

Brown's Valley.....	Brown's Valley.....	Private	100	
Wheaton	Wheaton	Co-operative.....	35	Lake Valley.....
Tintah	Tintah	
Traverse	Traverse	Co-operative.....	50	

WABASHA COUNTY.

Hammond	Hammond	Private	150	
Mazeppa	Mazeppa	Private	80	
Plainview	Plainview	Private	300	
Kellogg	Kellogg	Private	Gathered Cream.
Elgin	Elgin	Co-operative.....	128	
Weaver	Weaver	Private	Gathered Cream.

WASECA COUNTY.

Freedom	Cream	Co-operative.....	120	County Line.
Vivian	Vivian	Co-operative.....	126	Plum Valley.
Alma City.....	Vivian	Co-operative.....	135	
New Richland	New Richland	Private	75	Alpha.
Otisco	Otisco	Co-operative.....	100	
Janesville	Janesville	Dividend	120	
New Richland.....	New Richland.....	Co-operative.....	Star.
Waseca	Waseca	Co-operative.....	90	
Oakwood	Waseca	Co-operative.....	50	Oakwood.
Palmer	Palmer	Co-operative.....	70	
Vivian	Minnesota Lake.....	Co-operative.....	60	Hamburg.
St. Marys.....	Waseca	Co-operative.....	60	St. Marys.
Smith's Mills.....	Smith's Mills.....	Co-operative.....	99	
Freedom	Vivian	Co-operative.....	85	
Byron	New Richland.....	Co-operative.....	46	
Blooming Grove.....	Morristown	Co-operative.....	42	
Plum Valley.....	Vivian	40	

WADENA COUNTY.

Sebeka	Sebeka	Co-operative.....	42	
--------------	--------------	-------------------	----	--

CREAMERY DIRECTORY, 1898—Continued.

WASHINGTON COUNTY.

Location.	Postoffice.	Organization.	No. Patrons.	Remarks.
New Scandia.....	Scandia	Co-operative.....	182	
Newport.....	Newport	Co-operative.....	50	
Cottage Grove.....	Cottage Grove.....	Co-operative.....	50	
Forest Lake.....	Forest Lake.....	Co-operative.....	92	
Oneika Township.....	Withrow	Co-operative.....	65	Withrow Cr'y Co.
Lake Elmo.....	Lake Elmo.....	Co-operative.....	..	
Stillwater.....	Stillwater	City Creamery.

WATONWAN COUNTY.

Madelia	Madelia	Co-operative.....	200	
Fielden	Madelia	Co-operative.....	49	Fielden.
St. James.....	St. James.....	Private	200	
St. James.....	St. James.....	Private	60	
Butterfield.....	Butterfield.....	Co-operative.....	80	
South Branch.....	South Branch.....	Private	50	
Long Lake.....	St. James.....	Private	40	
Odin	Odin	Co-operative.....	40	
Adrian	Sveadahl	Co-operative.....	72	
Godahl	Godahl	Co-operative.....	135	
Sveadahl	Sveadahl	Co-operative.....	64	
Long Lake.....	St. James.....	Private	65	

WRIGHT COUNTY.

Monticello	Monticello	Private	200	
Delano	Delano	Private	175	
Cokato	Cokato	Co-operative.....	80	
Stockholm.....	Cokato	Co-operative.....	105	
St. Michael's.....	St. Michael's.....	Private	150	
Howard Lake.....	Howard Lake.....	Co-operative.....	60	
French Lake.....	French Lake.....	Co-operative.....	65	
Waverly	Waverly	Co-operative.....	90	
Montrose	Montrose	Private	122	North Star.
Buffalo	Buffalo	Private	40	
Hanover	Hanover	Private	60	
Annandale.....	Annandale.....	Co-operative.....	70	
Maple Lake.....	Maple Lake.....	Co-operative.....	45	Maple L. Dairy Ass'n.
Rockford	Rockford	Co-operative.....	..	

WINONA COUNTY.

Bethany	Bethany	Dividend	40	
St. Charles.....	St. Charles.....	Dividend	200	
Saratoga	Clyde	Co-operative.....	300	
Utica	Utica	Private	250	
Pickwick	Pickwick	Private	60	
Rolling Stone.....	Rolling Stone.....	Dividend	40	
Lewiston	Lewiston	Co-operative.....	96	J. W. Koepsell.
Hillsdale Township.....	Stockton	

YELLOW MEDICINE COUNTY.

Wood Lake	Wood Lake.....	Private	100	
St. Leo.....	St. Leo.....	Private	50	
Echo	Echo	Private	300	
Clarkfield.....	Clarkfield.....	Private	50	
Granite Falls.....	Granite Falls.....	Private	

LIST OF MINNESOTA CHEESE FACTORIES AND HOME DAIRY
CHEESE MANUFACTURERS.

NAME AND LOCATION OF FACTORY.	Post Office Address.	Reg'd. No.	County.	Ownership.
Atlanta and Walworth.	Voss	226	Becker	Co-operative.
Acoma	Acoma	120	McLeod	Co-operative.
Antrim	Antrim	224	Watonwan	Private.
Amor	Amor	172	Otter Tail	Co-operative.
Ashby	Ashby	185	Grant	Co-operative.
Appleton	Appleton	195	Swift	Co-operative.
Berne	Berne (Crescent)	5	Dodge	Private.
Byron	Byron	3	Olmsted	Private.
Becker	Becker	24	Sherburne	Co-operative.
Biscay	Biscoy	97	McLeod	Co-operative.
Benedict	Benedict	133	Scott	
Beaver	Beaver	212	Winona	Co-operative.
Cannon Falls	Cannon Falls	183	Goodhue	Co-operative.
Clear Lake	Clear Lake	198	Sherburne	
Cheaney	Cheaney	203	Dodge	Co-operative.
Canton	Canton	211	Fillmore	Private.
Dennison	Dennison	199	Goodhue	Minneapolis Milk Co.
Eden Valley	Eden Valley	229	Meeker	Private.
Elysian	Elysian	125	Le Sueur	Private.
Eureka	St. Michael's	160	Wright	Co-operative.
Ellington	West Concord	161	Dodge	Co-operative.
Elbow Lake	Elbow Lake	167	Grant	Co-operative.
Fergus Falls	Fergus Falls	1	Otter Tail	Private.
Fisher	Fisher	194	Polk	Co-operative.
Gaylord (United Farm)	Gaylord	116	Sibley	Co-operative.
Glencoe	Glencoe	170	McLeod	Co-operative.
Gaylord	Gaylord	136	Sibley	Co-operative.
Garden City	Garden City	180	Blue Earth	Co-operative.
Hancock	Hancock	230	Stevens	Co-operative.
Gentilly	Gentilly	193	Polk	Co-operative.
Huntley	Huntley	184	Faribault	Private.
Hudson	Alexandria	188	Douglas	Co-operative.
Hallock	Hallock	23	Kittson	
Hampton	Hampton	96	Dakota	Private.
Howard Lake	Howard Lake	129	Wright	Co-operative.
Hector	Hector	169	Renville	Co-operative.
Island Lake	Island Lake	219	Lyon	Co-operative.
Le Sueur Center	Le Sueur Center	181	Le Sueur	Private.
Lambert	Lambert	192	Polk	Co-operative.
Lake Crystal	Lake Crystal	205	Blue Earth	
Lakefield (the Gem)	Lakefield	217	Jackson	Private.
Medford	Medford	26	Steele	Private.
Maple Bay	Maple Bay	231	Polk	Co-operative.
McIntosh	McIntosh	227	Polk	Co-operative.
Merton	Merton	121	Steele	Co-operative.
Madelia	Madelia	126	Watonwan	Co-operative.
Minneota	Minneota	137	Lyon	
Maine Prairie	Maine Prairie	175	Stearns	Private.
New Richland	New Richland	33	Waseca	Private.
Nora	Nora	200	Pope	Co-operative.
New Trier (Star)	New Trier	95	Dakota	Co-operative.
North Redwood	North Redwood	112	Redwood	Private.
Norwood	Norwood	148	Carver	Home Dairy.
Olmsted	Olmsted	2	Olmsted	Private.
Odessa	Odessa	202	Big Stone	Co-operative.
Pine Island	Pine Island	4	Goodhue	Crescent Creamery.
Plainview	Plainview	221	Wabasha	Private.
Rock Dell	Rock Dell	18	Olmsted	Private.
Sparta	Montevideo	201	Chippewa	Co-operative.
Stanton	Stanton	110	Goodhue	Co-operative.
Sumter	Sumter	118	McLeod	Co-operative.
Spring Hill	Spring Hill	94	Stearns	
Springfield	Springfield	179	Brown	Co-operative.
Stewart	Stewart	206	McLeod	Private.
Spring Creek	Kerkhoven	177	Swift	
Villard	Villard	115	Pope	Co-operative.
Vernon Center	Vernon Center	132	Blue Earth	Private.
Wilder	Wilder	102	Jackson	
Willmar	Willmar	123	Kandiyohi	Co-operative.
West Concord	West Concord	165	Dodge	Co-operative.
Wasioja	Wasioja	204	Dodge	Co-operative.
Wendell	Wendell	207	Grant	Co-operative.
Watson	Watson	218	Chippewa	Co-operative.
Warsaw	Stanton	196	Goodhue	Co-operative.
Western	Western	197	Otter Tail	Co-operative.
Wykoff	Wykoff	225	Fillmore	Private.

BRICK FULL CREAM CHEESE.

NAME AND LOCATION OF FACTORY.	Post Office Address.	Reg'd No.	County.	Ownership.
Milton	Berne	222	Dodge	Private.
Berne (Kasper Stuckey and Amforst).....	Berne	214	Dodge	Private.
Berne (J. Lehnhurr)...	Berne	209	Dodge	Co-operative.
Berne (Kasper Stuckey)	Berne	213	Dodge	Private.
Berne (G. Andrist)....	Berne	215	Dodge	Private.
Dunbar	Minnesota Lake..	149	Faribault	Private.
Good Thunder.....	Good Thunder....	210	Blue Earth	Private.
Lansing	Lansing	138	Mower	Private.
London	Myrtle	164	Freeborn	Co-operative.
Minnesota Lake.....	Minnesota Lake..	191	Faribault	Private.
Pen	Brownton	228	McLeod	Co-operative.

FULL CREAM SWISS CHEESE.

Le Roy (John Frank)...	Le Roy.....	30	Mower	Private.
Berne (G. Andrist)....	Berne	216	Dodge	Private.

LIMBERGER FULL CREAM CHEESE.

Mantorville	Mantorville	55	Dodge	Private ownership.
Pine Island.....	Pine Island.....	223	Goodhue	

The above named cheese factories are registered in this office and have received their pure food seal and factory number. In addressing cheese manufacturers always use name of factory and post-office address, as officers are changing often. Minnesota full-cream cheese standard is 45 per cent fats to total solids. Many of Minnesota's cheese factories have been built for both butter and cheese, and make either butter or cheese as the best market may indicate.

HOME DAIRY FULL CREAM CHEESE.

NAME.	Post Office Address.	Number.	County.
James H. Quinn.....	Wells	220	Faribault.
J. Denny	Mantorville	134	Dodge.
Isaac Staples.....	Stillwater	152	Washington.
W. J. Kesper.....	Hancock	157	Stevens.
W. W. Pike.....	Verndale	168	Wadena.
R. Rasmussen	Pcnnock	173	Kandiyohi.
Lewis Engberg.....	Vasa	174	Goodhue.
E. B. Williams.....	Lansing	186	Mower.
J. B. Kelly.....	Lakeville	208	Dakota.
F. Hare & Son.....	Etna	139	Fillmore.
E. Robbins	Western	29	Otter Tail.
A. Lyman	Spring Valley.....	34	Fillmore.
B. Doncotte	Belle Prairie.....	114	Morrison.
Thomas Anderson	Milan	135	Chippewa.
A. Domaz	Spring Valley.....	154	Fillmore.
W. G. Clinton.....	Frazee	46	Becker.

The above named home dairies are registered in this office and have received their pure food seal and numbers.

LIBRARY OF CONGRESS



0 002 859 166 4

