

Historic, Archive Document

Do not assume content reflects current scientific knowledge, policies, or practices.

62.41

RETURN TO POMOLOGY
SECTION OF NOMENCLATURE.

FEB 21 1917

INDEXED.

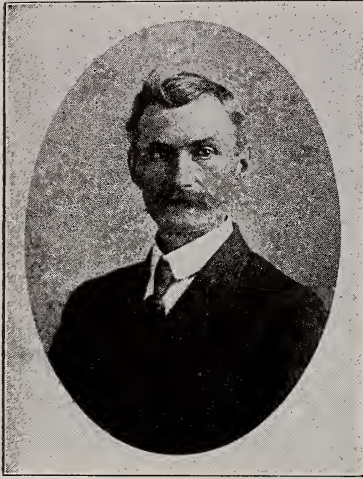
ROKELY'S SMALL FRUIT PLANTS



1917

J. N. ROKELY NURSERIES
Strawberry Specialists

BRIDGMAN, MICHIGAN



J. N. Rokely

TO OUR PATRONS

From year to year we have taken particular pride in presenting our catalogue, because each year we have tried to make it more instructive and a better guide for our customers to order their strawberry plants from.

In preparing our catalogue we only aim to list varieties of plants that we know are the best. There are no better plants raised than we are raising right here at Bridgman, Michigan.

Our plants have the vitality and are true to name. The quality of our plants has been responsible for the doubling of our business each year.

If you have ever had any trouble in growing strawberry plants we would be very glad to co-operate with you in helping you to make a success of it.

We want to call your particular attention to the everbearing varieties, the price of which is now down within the reach of all and certainly you should plant some of this variety.

If you are in doubt as to varieties you wish to order or if we can give you any particular advice as to planting, marketing, etc., we want you to feel perfectly at liberty to call on us.

We certainly are glad to have the opportunity of thanking our customers for their past business and for the many fine letters we have had from you praising our plants. To those of you who have never bought our plants, we respectfully solicit your orders this year, knowing that the quality of the plants and the promptness and pains we will take in filling your order will make you a life long customer.

Owing to the extreme high prices that are prevailing all over the country for every thing we buy, and the high price and scarcity of labor, the cost of growing a thousand plants is nearly double what it was a few years ago. For this reason we are obliged to add a small percent to our former prices, but I believe you will still find that our prices are lower than most reliable growers are quoting this year.

We will appreciate having your order at an early date and wishing you a prosperous year, I remain,

Yours very truly,
J. N. ROKELY

GENERAL INSTRUCTIONS READ CAREFULLY

When writing, please be sure to sign your name plainly, also give your Postoffice, County and State.

Substitution. We will not substitute one variety for another without your permission, unless order is received too late in season to permit correspondence. In this case, some variety having same season and variety will be substituted.

Terms. Cash with order or part cash and the balance any time before shipment is made. We give references as to our liability which all are at liberty to investigate. For information as to our standing and reliability, please refer to the Postmaster, or Express Agent of Bridgman, or the Farmers and Merchant's Bank, Benton Harbor, Michigan; Bridgman State Bank, Bridgman, Michigan. (In writing to any of the above please enclose stamp for reply).

How to Send Money. Chicago or New York draft, express order, postoffice money order, registered mail.

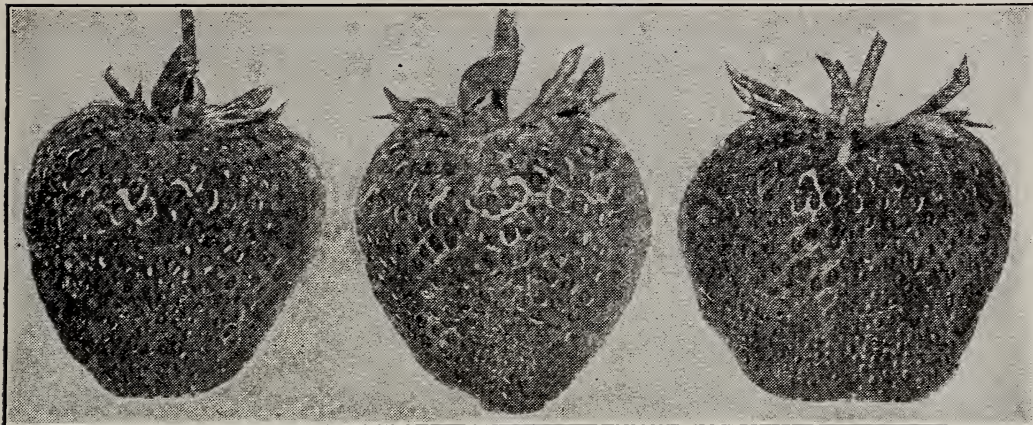
Time to Order.—Order early. The earlier the better. If anything more is needed it can be added later. If not prepared to send the full amount, send part and the order will be booked; the balance may be sent any time before shipment is made.

Methods of Shipping. By express; this is the safest, and, all things considered, the best way to ship plants, especially strawberry plants. Large orders of can plants may be shipped by freight, and as a rule they arrive in good condition. Certificate of nursery inspection goes on every package of plants we send out. We have the Adams Express Co.

Season of Shipping. We commence to ship the last of March or first of April, according to season.

We do not issue a Fall Catalog, but we will supply you with what plants you may want at any time during October or November, at prices quoted in this catalog.

Rokely Plants are dependable and true to name. Your orders will have careful attention



STRAWBERRY PLANTS

There is no fruit that should be so generally planted in the home garden. Two hundred and fifty plants will give you all the fruit that you want for your table use and for canning for winter. Strawberries as a fruit are in a class by themselves. You will make no mistake in ordering any of the varieties listed herewith for either the home garden or for commercial use.



The Root Growth in Our Nursery
is Exceptionally Vigorous

Aroma (S)—Late. This is one of our best and most popular varieties. Berry is very large and one of the best shippers, always selling at top prices owing to its large size and fine appearance. Plant is healthy and puts out plenty of runners. The demand for Aroma plants is very heavy. \$2.75 per 1,000.

August Luther (S)—Extra early. Where a very early strawberry is wanted we know of no other variety that will compare with it. Ripens early and continues to bear till practically every berry reaches a good size. Fruit is very uniform in shape and size; plants healthy and good plant makers. It succeeds best on rather light soil. \$2.50 per 1,000.

Bederwood (S)—Ripens early, only a few days later than August Luther, and continues to bear heavy pickings of berries till the late varieties are practically gone. The Bederwood is about as firm as Bubach. It is a great favorite with us owing to the large amount of fruit it will produce. Plants are healthy, deep rooted and a great drouth resister. \$2.50 per 1,000.

Bubach (P)—This is one of the old standard varieties. The plant is very large and showy, the berries are among the largest. Yields large crops of fancy berries. We recommend this variety for home use or near-by market. \$4.00 per 1,000.

Charles I. (S)—The earliest strawberry grown; ripens nearly a week before any other variety and is very attractive. It is a strong fertilizer

and a strong grower. The berries are large, regular in form and of good color and quality. We want you to include some Charles I in your order this spring sure. \$3.00 per 1,000.

Gandy (S)—Late. This has been one of the leading varieties with fruit growers all over the country for many years. Berry is large and firm, a good market variety, ripens a few days later than Aroma. It resembles the Aroma very much. \$2.75 per 1,000.

Wm. Belt (S)—The plant is very large, a most luxuriant grower and remarkably productive. Berry is very large, conical and uniform in shape. Color of Wm. Belt is extra fine, being a brilliant glossy red, and ripening all over at once. This valuable late variety should be planted on well drained land, as it sometimes rusts on wet soil. Wm. Belt is a profitable late variety. \$2.75 per 1,000.



The Aroma

Glen Mary (S.)—Large, medium late, fine flavor, vigorous and productive. Plants are very large, with long, heavy roots; very popular with many growers. \$4.00 per 1,000.

Haverland (P.)—Medium early, very pro-



Pocomoke

ROKELY PLANTS ARE DEPENDABLE AND TRUE TO NAME. YOUR ORDERS WILL HAVE CAREFUL ATTENTION

ductive, fruit large and fine, one of the most popular and well tested varieties; one of our heavy croppers; an all round profitable kind. Demand for this variety is very heavy. \$2.75 per 1,000

Senator Dunlap (S) — This berry is one of the Warfield type, has a perfect blossom, is hardy, productive, a splendid keeper and is able to hold its own under most any rough and tumble methods of cultivation to which it is likely to be subjected. Senator Dunlap is a very hardy berry, having good-sized and even fruit of a very beautiful dark red color. It is a berry to grow for home use or market. The Senator Dunlap is now one of the greatest all round varieties under cultivation. We sell as many of these plants



Gibson

Warfield and using Senator Dunlap along with them. \$2.50 per 1,000.

Baldwin's Pride of Michigan (S)—One of the very best in quality, dark, glossy red all through. A good berry for home use or market; large size, firm and fine flavor. A good plant maker. Berries will stand on vines several days after they are ripe without spoiling. \$3.00 per \$1.000.

Gibson (S)—This is a new variety that is coming to the front very fast. Gibson commences to ripen with Senator Dunlap, but owing to its great productiveness it continues till quite late. It is a strong grower, with long roots that withstand dry



Dunlap

every year as we do of all other varieties put together. \$2.50 per 1,000.

Warfield (P)—This is one of the great standard variety that has been the leader all over the country before the Senator Dunlap was introduced. It resembles the Dunlap, but has an imperfect blossom. You will make no mistake by planting



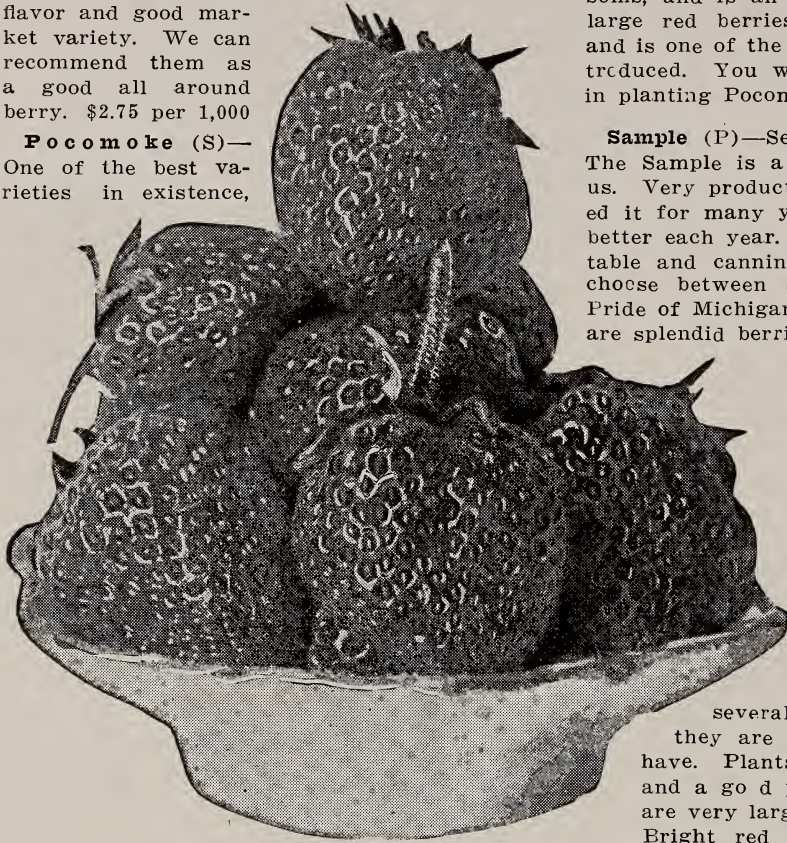
Bubach

USE THE ORDER BLANK IN THE BACK OF CATALOGUE AND BE SURE TO WRITE YOUR NAME AND ADDRESS PLAINLY

weather; has dark green foliage and lots of it. Berry is extra large and the vines are loaded with fruit. We advise all to try a few Gibson this spring; you will be delighted with them. \$2.75 per 1,000.

Brandywine (S.)—Late. Large size, good quality, good shape, firm and productive. Dark red, fine flavor and good market variety. We can recommend them as a good all around berry. \$2.75 per 1,000

Pocomoke (S.)—One of the best varieties in existence,



Billy Sunday

not only for its enormous productiveness, but on account of its beauty, adaptability to all soils, its foliage, enduring the dry hot weather, its large size, its deep color, its firmness and high flavor. The plant is a strong, robust grower, with deep roots and lots of them. Perfect blossoms, and is an enormous yielder of large red berries. It ripens evenly and is one of the best shippers yet introduced. You will make no mistake in planting Pocomoke. \$2.75 per 1,000

Sample (P)—Season medium late. The Sample is a great favorite with us. Very productive. We have fruited it for many years, and we like it better each year. It is our choice for table and canning, yet it is hard to choose between Sample, Dunlap and Pride of Michigan. All three of them are splendid berries for home use and for market. The Sample is a very heavy plant maker and the plants are large and thrifty. \$2.75 per 1,000. (See full Price List in back of catalog.)

Joe Crampton (S)—A new, promising variety. They have been grown here by some of our best fruit growers for several years and they say they are the best berry they have. Plants are large, showy, and a good plant maker. Berries are very large and heavy yielders. Bright red and very attractive. \$3.00 per 1,000.

A Wonderful New Strawberry—The Billy Sunday

We have purchased from the originator, Mr. D. P. Yost, Lancaster, Ohio, some of the original stock of this improved new variety.

The plants are very hearty—a great crown maker—tall, dark green foliage, long, heavy fruit stalks, making the berries easily gathered. The berries are very large, glossy red, slightly wedge-shape, uniform in shape and size, a delicious, sweet flavor and it ought to make a good shipper. They fruit a long season, throw out late bloom that develops large berries, making a frost resister. They begin to ripen with Haverland and end with Sample. A perfect flowering variety and a good plant maker. We fruited the Billy Sunday on our own grounds the past season and find them to be one of the best.

SPECIAL OFFER

In order to give our customers an opportunity to properly try out this new variety, we are offering to give you fifty plants free with a \$5.00 order, and one hundred plants with a \$10.00 order, if your order is in before March 15th, and you mention this offer at time of ordering. I guarantee that every plant sent you will be a genuine Billy Sunday. These plants are scientifically grown and free from disease. Read below what the Michigan Agricultural College says of the Billy Sunday Strawberries.

Michigan Agricultural College

East Lansing, Mich.

July 22, 1914.

Mr. D. P. Yost, R. D. No. 11,
Lancaster, Ohio.

Dear Sir:—

The Billy Sunday Strawberry plants were exceedingly fine with us this year, although before fruiting time it was unusually dry. The quality is very high. The plants are very productive, and we think very highly of them.

Very truly yours,

H. J. Estace.

Send in your order today so that we will be sure to have free plants to include without any cost to you whatever.

How to Prepare the Soil for Strawberries

One important and advantageous feature of the strawberry business not always appreciated is the fact that the strawberry in any ordinary soil yields large harvests of fruit. As to fertilizer, we prefer stable manure over anything else. If the soil is strong enough to produce a large crop of corn or potatoes, it will grow a fine crop of strawberries without the application of any fertilizer.

The best time to apply the manure is in the winter, just when the soil tiller has ample time at his command in which to do the work. It should be spread evenly over the entire surface, so that it will mulch the ground. Not only does it enrich the ground when thus applied, but it also keeps the soil from puddling, and in the spring it will plow up loose and mellow as a garden. After the plowing is done go over the field with harrow or disc until the soil and manure are thoroughly mixed together. It should be pulverized finely to the depth of the plowing.

If your soil is sandy, or loose black soil, it should be rolled firmly, but if it be clay or stiff black soil, roll it only enough to crush the clods. If the harrow follows directly after the breaking plow, before the clods have time to dry out and become hard the clods will crumble and it will be unnecessary to roll at all. We recommend that this course be followed if you have but one team; plow awhile and then harrow thoroughly the new plowed ground.

If for any reason you cannot haul manure during the winter, then wait until spring, plow your ground as outlined above, then set the plants. After this is done you may spread the fine manure between the rows and the cultivator will mix the manure into the soil. We often have manured our plants in this way, and the results are excellent. In fact, it is an ideal way.

In some localities stable manure cannot be had, and in such cases commercial fertilizers may be used. A fertilizer best adapted to the needs of the strawberry should contain the three principal plant-food ingredients in about the following proportions: Nitrogen, 3 per cent; Potassium, 9 per cent; Phosphorus, 7 per cent.

A commercial fertilizer should be applied and thoroughly worked into the soil before the plants are set.



Everbearing Strawberries



Superb Everbearing

We have fruited the Everbearing Strawberry on our ground for the past four seasons and certainly would not be without this new variety in our home garden. They are simply loaded with fruit from June until November.

The Everbearing Strawberry is no longer an experiment but it is a decided success. They will produce a big crop of fruit the same season they are planted and will start to produce in June of the next season and bear abundantly all summer and fall.

The varieties that we are listing we have given careful test the last four years and recommend them all. We do not have any preference with any one variety.

We expect a big sale of our Everbearing plants this year. To be sure that you will be able to buy them from us we would suggest that you place your order at once.

Note our free offer of plants on page 7 of the new variety "Billy Sunday," sent you without cost if you place your order before March 15th.

Americus—The fruit of Americus is borne on long stems which holds up the fruit in most cases above the leaves. The berries are aromatic and excellent in quality. If a late frost sweeps out the first set of fruit the plants will go right on and

bear some more; this is so true of the Progressive and Superb, and should be considered by the grower in selecting the varieties to plant. Grow some Americus and taste in September one of the finest and best flavored Strawberries on the market.

Progressive—The Progressive makes plants almost equal to Senator Dunlap, and it is no uncommon thing to find a cluster of berries on young plants of Progressives even before they are rooted; in fact, it produces so heavily that the blossoms must be carefully kept off until mid-summer, or else the plants will completely exhaust themselves before they get a chance to bed up. The quality of the fruit of this variety ranks with the best. It is medium in size, highly colored, being red to the core. The berry parts readily from the cap and, if not left on too long after it is ripe, it will carry well. We have a very fine stock of these this year.

Superb—The Superb is well named and is the best production. After planting in early Spring with blossoms kept off until midseason, or until about four weeks before you want ripe fruit you can get a crop the same season you plant; the following spring you will get a regular crop of fruit and then more fruit the following fall. This is true of all the fall bearing kinds. The fruit of the Superb is medium to large and very attractive; seeds are prominent.



Charles I

In addition to being fall bearing variety, Superb is an exceptionally desirable kind for the regular spring crop and immensely productive.

RASPBERRIES

Fifty at 100 rate, and 500 at 1,000 rate.

Raspberries will grow and do well on any ground that will produce good field crops. Soil must be comparatively dry or well drained. We generally set raspberries about four feet apart in the row and the rows six feet apart.

Red Varieties

Cuthbert—Leading late variety, all over the country. A very rank grower. Very productive. Fruit large and of good quality. If you want a good, all around late red raspberry, plant the Cuthbert. Price \$6.00 per 1,000.

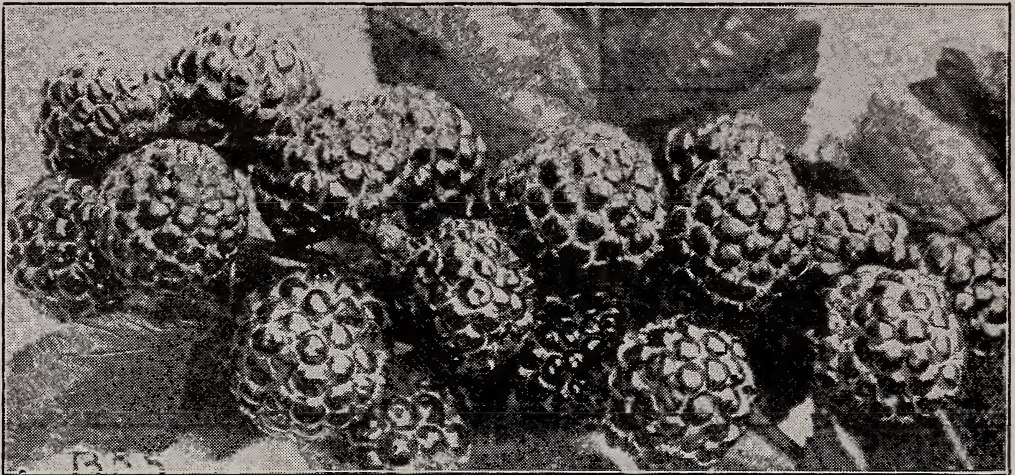
Miller—Early; very hardy and does not winter kill. The Miller is for an early ber-

ry what the Cuthbert is for a late one. The very best shipping qualities. Price \$6.00 per 1,000.

King—This is a new red raspberry of beautiful color; firm and having a high quality of fruit. Very early. Large and attractive, bright red berries. Several of our best growers consider this the best of the early red raspberries. \$6.00 per 1,000.



Early King



Cumberland Raspberry

BLACK RASPBERRIES

Cumberland—The largest black raspberry in existence. This raspberry is placed upon the market with the full assurance that it is the most profitable market variety yet known because of its immense size, firmness and great productiveness. Cumberland is very hardy, having withstood a temperature of sixteen degrees below zero without injury. Extra productive. Fruit is jet black and of fine quality. Ripens before Gregg. \$7.00 per 1,000.

Gregg—Fruit very fine and covered with bloom. Gregg has been the leading mar-

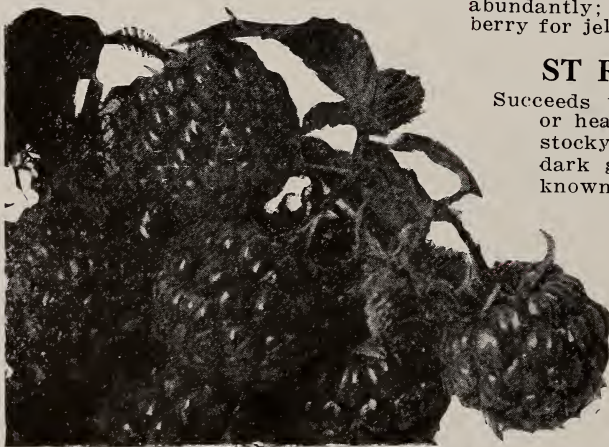
ket variety all over the country. A good all around late black cap. In quality they are hard to beat. They are large and productive. \$8.00 per 1,000.

Kansas—This variety is a general favorite with growers all over the country. Ripens just after Soughegan. Firm, handsome and of the best quality. Bush a strong grower; stands drouth and cold. Very productive. It is about as large as Gregg. Strong, healthy canes. \$6.50 per 1,000.

PURPLE RASPBERRIES

Haymaker—Of same type as Columbian, fruit a little more acid and later, prolonging the season. Enormous producer. \$9 per 1000.

Columbian (Purple Cap)—The Columbian is a variety of the Shaffer type; of remarkable vigor and productiveness. It is a very hardy and a rank, thrifty grower; propagates from the tips, same as black caps. Fruit very large and grows abundantly; very rich flavor, tarty, a splendid berry for jelly, pies and for canning. \$9 per 1,000.



St. Regis Everbearing Raspberry

ST REGIS EVERBEARING

Succeeds upon all soils, whether light sandy or heavy clay. In growth it is strong and stocky, with a great abundance of healthy, dark green foliage; it is the only variety known that gives a crop of fruit the same year planted and two crops the year after. Plants set in early spring will give a small crop of fruit in the fall following. About the middle of August it commences to set fruit on the young canes, and bears continuously until frost. The berries are large, beautiful and attractive. Plant St. Regis and succeed whether growing for home use or market. \$1.50 per 100; \$12.00 per 1,000.

BLACKBERRIES

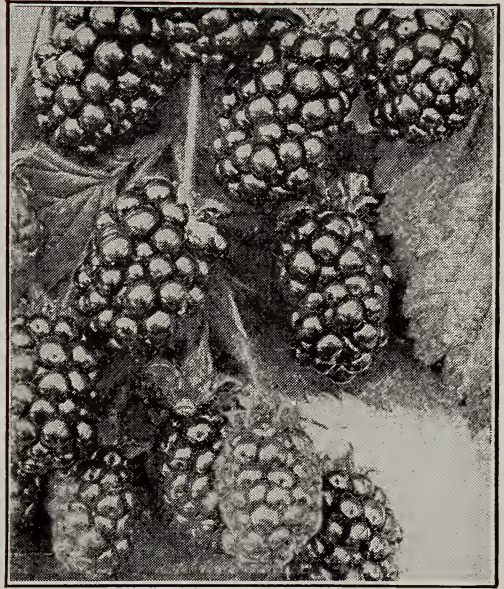
50 at 100, and 500 at 1,000 rates.

Wilson—This is the best blackberry under cultivation today. The fruit is the largest, produces double the bushels per acre and the best quality of any. Holds its color well after picking. It is the best shipper there is. Very profitable in spite of the fact that the Wilson requires protection in Michigan. It always sells at a premium over the other varieties on the Chicago market and the quotations on them are always the highest. The berry is jet black and holds its color after picking, never turning red. The Wilson is a money maker. \$8.00 per 1,000.

Eldorado—This berry is as hardy as the Snyder, twice as large and better quality. It has never been known to winter kill even in Northern Michigan and Wisconsin. Very profitable, as it needs no protection in winter. \$10.00 per 1,000.

DEWBERRY

Lucretia Dewberry—The best of the blackberry family. Berries are far larger and better than any blackberry; of unequalled excellence; sweet and luscious throughout, of brightest glassy black color. Its trailing habit renders it less liable to



Eldorado Blackberry

winter-kill. Propagates from the tips. Plant in rows six feet apart and plants three feet apart in the row. \$8.00 per 1,000.

GOOSEBERRIES



Downing—We are offering this variety with the full assurance that it is the best gooseberry under cultivation. Berry is yellowish green when ripe, one of the very largest varieties, and they will produce more fruit than any variety we have ever grown. \$6.00 per 100.

Houghton—An enormously productive and always reliable old sort; of vigorous yet slender, spreading growth, not subject to mildew. Fruits of medium size, smooth; pale red; tender and good. "Best of all well tested sorts for general planting."—South Dakota Horticultural Society. "Steady, regular bearer; very productive, free from mildew."—Illinois Horticultural Society." \$5.00 per 100.

GRAPES

Concord—Large, purplish black grape, very hardy and productive, ripening about the middle of September. This is one of the most popular market grapes. Midseason.

Moore's Early—Very large, round; a black with a blue bloom; quality very fine and is classed as better and sweeter than Concord; they stand handling and shipping, and have an established reputation

on the market. Vines extremely hardy and productive. Early.

Niagara—Large, slightly oval; pale yellow with a white bloom; the quality is equal to Concord and is the standard white grape of the country. Bunches are large and compact. Vine vigorous, hardy and

very productive.

Worden—Large, round; black; flesh has a flavor unlike any other grape; delicious and melting; a dessert and market sort, considered superior to Concord in every way. Vine hardy and productive. Early midseason.

CURRANTS

Wilder—Ripens the same time as Fay's Prolific, and hangs on the bush much longer; fully as prolific and is every way as profitable. A popular variety both for table and market. It is one of the strongest growers and one of the most productive varieties on our list. Bunches and berries large, bright and attractive red even when dead ripe. Hangs on the bushes in fine condition for handling as late as any known variety. We especially recommend the Wilder.

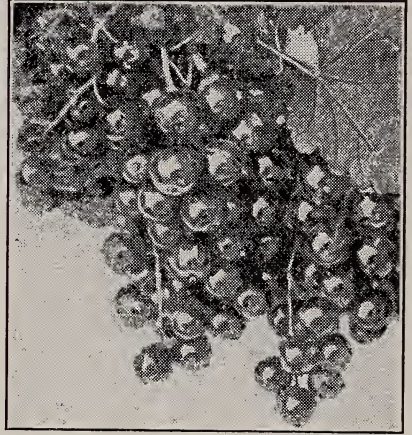
Red Cross—Very strong, vigorous, enormously productive. Clusters long, well filled; berry deep red, large, high flavored, sweet.

Fay's Prolific (Red)—Well known and popular currant, grown in every state in the Union. Color deep red, great bearer, large bunches. Fine flavor, not so sour as some.

London Market—Strong grower, large fruit and very productive; holds its foliage late and is not liable to attack of worms and borers. Plant is extremely vigorous.

Cherry—Bush vigorous, stocky and compact; clusters rather short with short stems; fruit averages large; color fine, bright red; berry thin skinned, juicy, fine flavored.

Perfection (Red)—This truly wonderful new currant has both large size and extra good quality. Perfectly healthy, a vigorous grower, and in fact, an extra fine red



Wilder

currant in every way. Widely advertised all over the country.

White Grape (White)—Very large, yellowish white, excellent quality and valuable for the table. The finest of the white sorts.

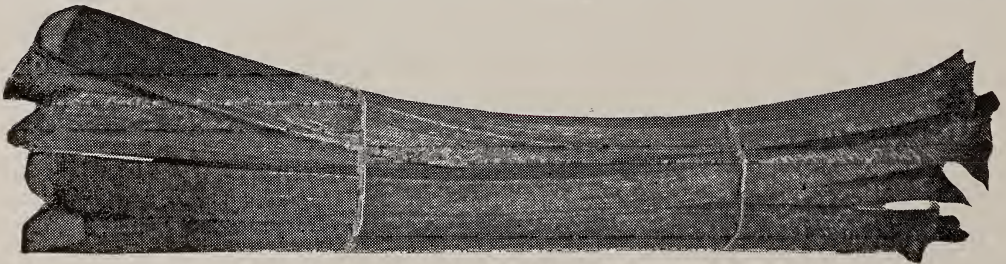
RHUBARB OR PIE PLANT

Coming in so early, Rhubarb finds a ready market, being relished by everyone. The city garden should have a dozen or two, and every farm can add to its income from Rhubarb. It is easily produced in a commercial way, yields immensely, can be shipped almost any distance, and is easily gathered and packed.

The secret of success is well drained soil. Prepare it well, set 2 1-2 by 4 feet, covering the crown with two inches. Do not let water stand on the ground, especially when manure is freshly applied. While a heavy feeder, it should have its ferti-

lizer distributed over the year, not gorged with heavy applications, which cause a fermentation disastrous to the plant. Top dress in September and February with good manure. As soon as growth starts in the spring rake off the straw portions and work the other in. If the growth begins to look quite yellow in hot weather remove any decaying stalks and cultivate shallow in and between the rows.

Giant Crimson—Early, just before Asparagus; immense stalks, tender, delicately flavored; productive and continues long in use; the best variety for general use. Large thrifty roots. Doz., 60c; 100, \$4.00.



PRICE LIST FOR 1917

STRAWBERRY PLANTS

If by mail, add 25 cents per 100 for postage
 Fifty of one variety at hundred rates, and 500 at 1,000 rates.

	100	250	1,000
August Luther (S) -----	\$ 0.40	\$ 0.85	\$ 2.50
Aroma (S) -----	.50	1.00	2.75
Billy Sunday (S) -----	2.00		
Buach (P) -----	.50	1.00	4.00
Brandywine (S) -----	.50	1.00	2.75
Charles I (S) -----	.50	1.00	3.00
Gandy (S) -----	.50	1.00	2.75
Gibson (S) -----	.50	1.00	2.75
Glen Mary (S) -----	.50	1.00	4.00
Haverland (P) -----	.50	1.00	2.75
Joe Crampton (S) -----	.50	1.00	3.00
Pride of Michigan (S) -----	.50	1.00	2.75
Pocomoke (S) -----	.50	1.00	2.75
Senator Dunlap (S) -----	.40	.85	2.50
Sample (P) -----	.40	1.00	2.75
Stevens Late Champion (S) -----	.50	1.00	2.75
Uncle Jim (S) -----	.50	1.00	3.00
Warfield (P) -----	.40	.85	2.50
Wm. Belt (S) -----	.50	1.00	2.75

EVERBEARING STRAWBERRIES

Americus (S) -----	1.25	3.00	10.00
Superb (S) -----	1.25	3.00	10.00
Progressive (S) -----	1.25	3.00	10.00

RED RASPBERRIES

Cuthbert -----	1.00	2.00	6.00
King -----	1.00	2.00	6.00
Miller -----	1.00	2.00	6.00
St. Regis (Everbearing) -----	1.50	3.50	12.00

BLACK RASPBERRIES

Cumberland -----	.90	2.00	7.00
Gregg -----	.90	2.25	8.00
Kansas -----	.90	2.00	6.50

PURPLE RASPBERRIES

Columbian -----	1.00	2.25	9.00
Haymaker -----	1.00	2.25	9.00

BLACKBERRIES

Eldorado -----	1.25	2.75	10.00
Wilson -----	1.00	2.25	8.00
Lucretia (Dewberry) -----	1.00	2.25	8.00
Giant Himalaya Berry -----	.50	2.00	

Doz.

Giant Himalaya Berry -----	.50	2.00	
----------------------------	-----	------	--

CURRANTS

Fay's Prolific -----	\$.60	\$ 3.75
Red Cross -----	.60	3.75
Cherry -----	.60	3.75
London Market -----	.60	3.75
White Grape -----	.60	3.75
Wilder -----	.60	3.75
Perfection -----	1.00	8.00

GOOSEBERRIES

Downing -----	\$1.00	\$6.00
Houghton -----	.75	5.00

GRAPE PLANTS

Concord -----	\$.60	\$ 2.50
Moore's Early -----	.75	3.75
Worden -----	.75	3.75
Niagara (White) -----	.75	3.75

Asparagus Roots -----	\$.80	\$ 6.00
-----------------------	--------	---------

Varieties of Strawberry plants marked (P) are pistillate and must have staminate varieties set every third or fourth row. Those marked (S) are staminate and fertilize themselves; they may be set in large patches alone with best results. If you expect to plant several thousand plants write us about it, giving us a list of what you want. We quote special prices to large planters.

We are connected with long distance telephone and telegraph offices. Prompt attention given to all inquiries.

ROKELY'S

SMALL FRUIT PLANTS



Concord Grape

J. N. ROKELY NURSERIES