

E06288

ILLUSTRATED CATALOGUE

OF

TENTS

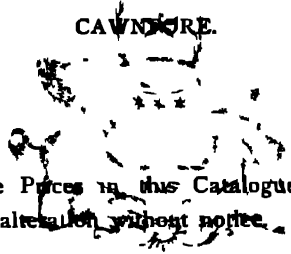
AND

CAMP EQUIPAGE,

MANUFACTURED BY THE

ELGIN MILLS COMPANY,

CAVENDISH.



N.B.—The Prices in this Catalogue are subject to fluctuation or alteration without notice.

ELGIN MILLS COMPANY.

GOLD MEDAL—CALCUTTA INTERNATIONAL EXHIBITION.
 SILVER MEDAL—MELBOURNE INTERNATIONAL EXHIBITION.
 BRONZE MEDAL—INDIAN AND COLONIAL EXHIBITION, LONDON.

(Fac-simile of Certificate).

CALCUTTA INTERNATIONAL EXHIBITION, 1883-84.

Certificate of Merit of the First Class

AND OF

GOLD MEDAL,

AWARDED TO THE

ELGIN MILLS COMPANY, CAWNPORE,

FOR TENTS.

(Signed) RIVERS THOMPSON,
President & Sec. Committee

(Signed) MOUNT STUART JACKSON,
Secretary.

CALCUTTA, THE 26TH MAY, 1884.
 No. 127B.

CAWNPORE.

ELGIN MILLS COMPANY.

ELGIN MILLS COMPANY.



THE Tents made by the ELGIN MILLS COMPANY have now been before the public for some 25 years, and the demand for them—notwithstanding the keen competition that has sprung up—has been steadily on the increase, the yearly sales having quadrupled within the past six years.

This alone is sufficient evidence of their universal popularity amongst all those who have to spend a great portion of their lives in camp, and whose comfort so much depends on the *quality* of their Tents.

The Company's Tents are now in use in Australia, Japan, America, Africa, and the United Kingdom (especially Scotland), and orders from these and any other parts of the world will at all times receive careful attention.

For the information of those not yet acquainted with their Tents, the Company take this opportunity of mentioning

1. That the cloths used are all of their own manufacture
2. The outer fold (unless when specially ordered otherwise) is made of a closely woven Drill, far surpassing in strength, durability, lightness, and power of resistance to sun and rain any cloth used in native-made Tents.
3. Their Tents are noted for their lightness, and also for their quick-drying properties; the latter being a most important consideration for those who have to strike camp and march in all weathers.

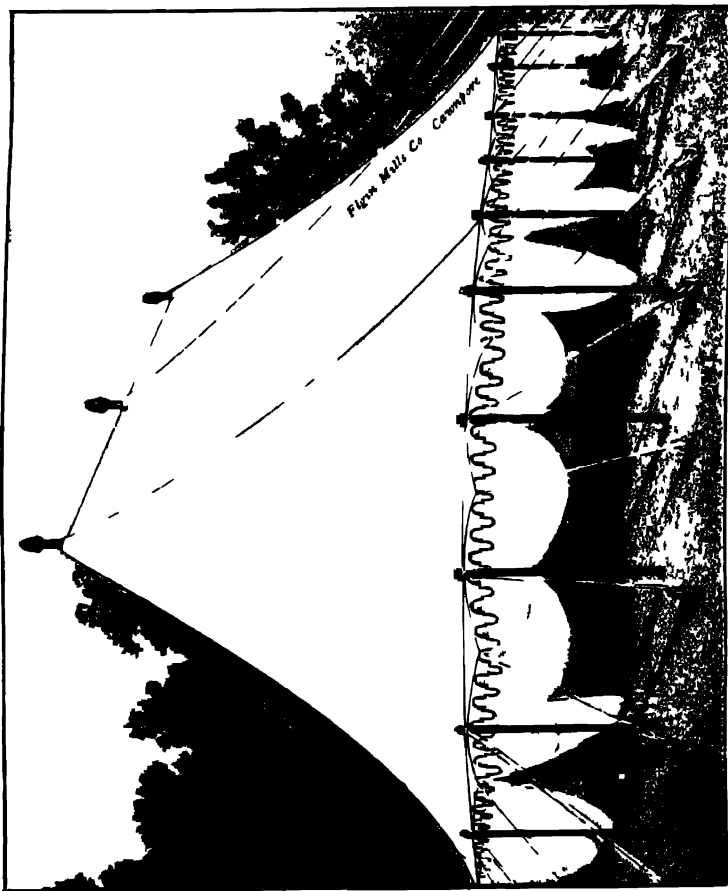
Estimates for Tents of any description or size not mentioned in this Catalogue will be promptly furnished on application to the

MANAGER AND SECRETARY,

ELGIN MILLS COMPANY, CAWNPORE.

CAWNPORE.

ELGIN MILLS COMPANY.



PAWAB SALLER J. BAHARJA

CANNOPRE

ELGIN MILLS COMPANY.

DURBAR TENT.



THIS is a Three-poled Double-fly Tent, and is specially adapted for holding Durbars or other State Ceremonials in. It is provided either with Kanats, stiffened with bamboos, as in an ordinary Double-poled Tent, or without bamboos, as in illustration. In the latter style, when looped up in festoons, the Tent looks very effective. It can be made of any size, but the following are the usual sizes :

No.	Size	PRICE	Weight—Mds.
1.	Single Kanats, 60 × 32 feet inside,	Rs. 3350	30
2.	Single Kanats, 30 × 16 feet inside,	Rs. 985	8

If Double Kanats are required, with a 4 feet passage between them all round, the prices will be :

No.	Size	PRICE	Weight—Mds.
3.	Double Kanats, 60 × 32 feet inside,	Rs. 4420	40
4.	Double Kanats, 30 × 16 feet inside,	Rs. 1450	10

ELGIN MILLS COMPANY.**CAWNPORE.**

ELGIN MILLS COMPANY.

THE "CIVIL SERVICE CUP" SHAMIANA.

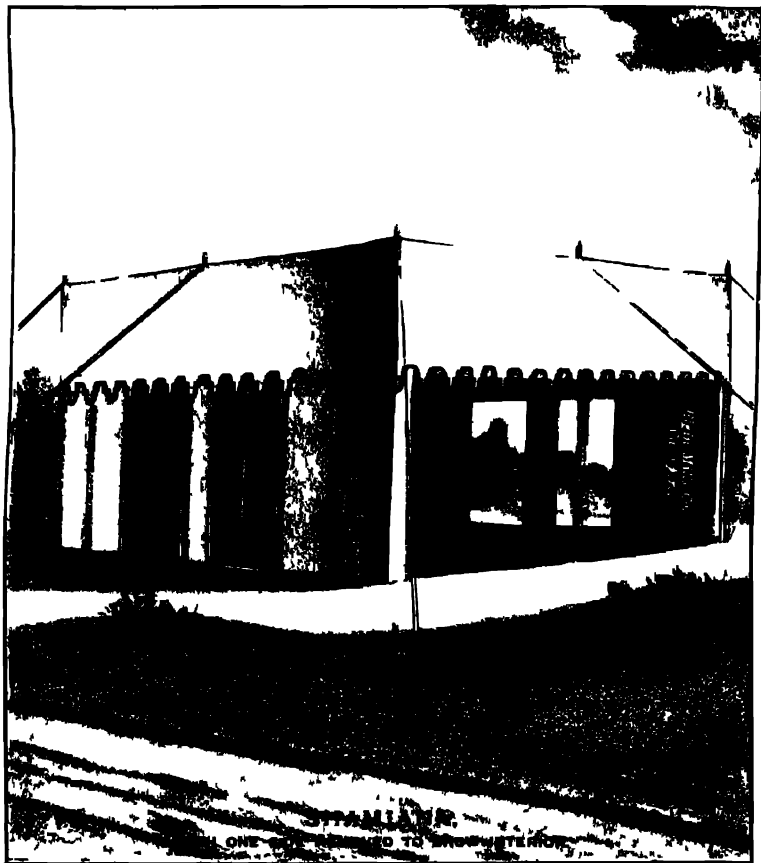


HIS is a Single-fly Shamiana or Canopy intended for Race Meetings, Gymkhanas, &c. It is usually made either striped red and white inside or with a red and white flowered chintz. Wooden Poles, painted to match chintz, in the centre, and Bamboo Poles at edges. The usual sizes are as follow :

No	Size	PRICE
1.	84 x 40 feet, - - -	Rs. 800
2.	60 x 30 feet, - - -	Rs. 600
3.	50 x 25 feet, - - -	Ra. 500
4.	45 x 20 feet, - - -	Rs. 450

CAWNPORE.

8
ELGIN MILLS COMPANY.



CAWNPORE.

ELGIN MILLS COMPANY.

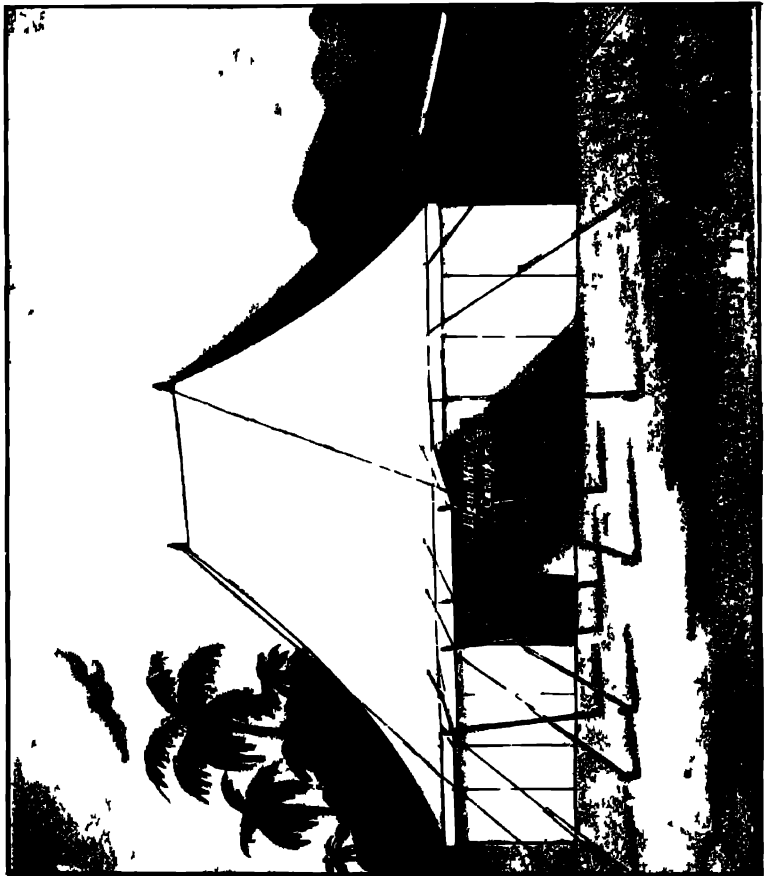
SHAMIANA.



THE illustration represents a well-known form of Tent, than which nothing is more suitable as a detached dining or reception room. There being no limit as to the size they can be made, they are, when tastefully decorated and furnished, the most suitable Tents for Native Durbars, or other large assemblies. The ordinary sizes, weights, &c., are :

No	Size.	PRICE	Weight - Mds.
1.	24 feet square, and 8 Bamboo Poles, painted,	Rs. 464	11½
2.	20 feet square, and 8 Bamboo Poles, painted,	Rs. 376	8½
3.	18 feet square, and 8 Bamboo Poles, painted,	Rs. 335	8½
4.	14 feet square, and 8 Bamboo Poles, painted,	Rs. 252	6½
5.	12 feet square, and 4 Bamboo Poles, painted,	Rs. 200	5½
6.	10 feet square, and 4 Bamboo Poles, painted,	Rs. 175	5

10
ELGIN MILLS COMPANY



CAWNPORE.

ELGIN MILLS COMPANY.

DOUBLE-POLED TENT.



HIS Tent consists of a large oblong inner room, which may, when made with a partition purdah, be divided into two smaller rooms. A walled passage, 4 feet wide, surrounds the centre room and affords protection against both heat and cold.

The roof is double, an ample space separating the two flies, with four folds of cloth throughout. The walls or Kanats are : inner 6½ feet, and outer 6 feet high.

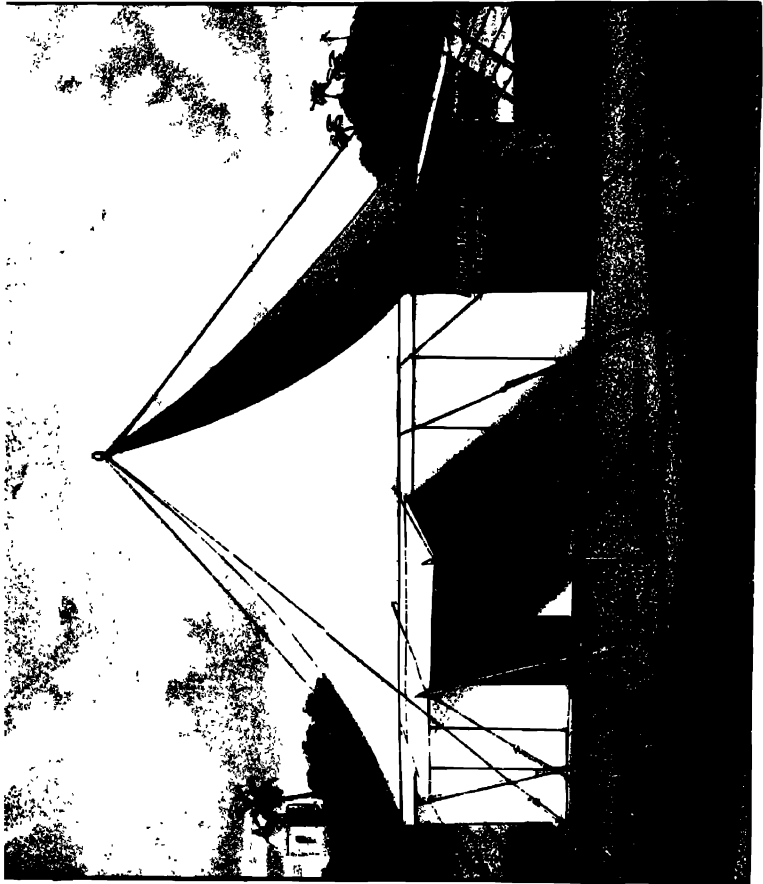
Each Tent is complete with Durries, Purdahs, Chicks, Saleetas, Pegs, and Mallets. The following are the usual sizes, with their approximate weights :

No.	Size.	PRICE	Weight.—Mds.
1.	38 x 20 feet, - - -	Rs. 1288	32
2.	30 x 18 feet, - - -	Rs. 1031	28
3.	28 x 16 feet, - - -	Rs. 945	24
4.	26 x 16 feet, - - -	Rs. 870	23½
5.	24 x 16 feet, - - -	Rs. 835	22½
6.	23 x 14 feet, - - -	Rs. 778	21½

Division Curtains, Detachable Bath-rooms, and Verandah Durries are only supplied when specially ordered, at an extra charge.

CAWNPORE.

ELGIN MILLS COMPANY.



CAWNPORE.

ELGIN MILLS COMPANY.

SINGLE-POLED TENT.



THE only difference between this Tent and the Double-poled one is that there is but one centre-pole, and the inner room is consequently square in shape. It may, however, be elongated by extending the lower fly to within a short distance of the outer wall.

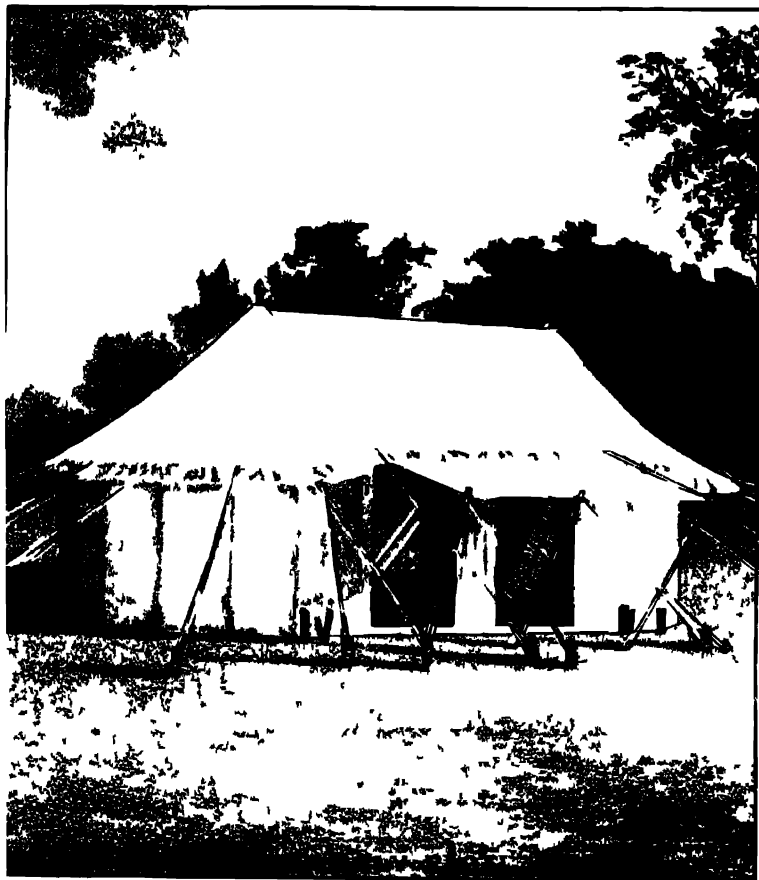
The same accessories accompany this Tent as the Double-poled Tent. The following are the usual sizes, with their approximate weights :

No	Size	PRICE	Mds	No	Size	PRICE	Mds
1.	20 × 20 feet,	Rs. 795	20	10.	22 × 20 feet,	Rs. 820	20
2.	18 × 18 feet,	Rs. 720	19	11.	22 × 18 feet,	Rs. 770	19½
3.	16 × 16 feet,	Rs. 640	17	12.	20 × 18 feet,	Rs. 750	19
4.	15 × 15 feet,	Rs. 606	15	13.	20 × 16 feet,	Rs. 680	17½
5.	14 × 14 feet,	Rs. 555	13½	14.	18 × 16 feet,	Rs. 660	17
6.	13 × 13 feet,	Rs. 525	13½	15.	18 × 14 feet,	Rs. 595	14
7.	12 × 12 feet,	Rs. 505	13	16.	16 × 14 feet,	Rs. 575	13½
8.	10 × 10 feet,	Rs. 480	11	17.	16 × 12 feet,	Rs. 540	13½
9.	24 × 20 feet,	Rs. 845	20½	18.	14 × 12 feet,	Rs. 520	13

Division Curtains, Detachable Bath-room, and Verandah
Dunnies are only supplied when specially ordered, at an extra
charge.

CAWNPORE.

ELGIN MILLS COMPANY.



CAWNPORE.

ELGIN MILLS COMPANY

DOUBLE-FLY RÁOTI.



THIS is a Double-fly Tent, with a centre room and a semi-circular room at each end ; which latter may be used as dressing-room and bath-room, or, when used as an office-tent, the end rooms can be utilised as record rooms

The ordinary sizes are :

No	Size	PRICE.	Weight — Mds.
1.	18 x 12 feet inside centre room,	Rs. 520	12
2.	16 x 14 feet inside centre room,	Rs. 520	12
3.	16 x 12 feet inside centre room,	Rs. 490	11
4.	14 x 12 feet inside centre room,	Rs. 470	10½
5.	12 x 12 feet inside centre room,	Rs. 360	9

The above prices do not include double fly or Durries for the two end rooms.

CAWNPORE.

ELGIN MILLS COMPANY.



CAWNPORE.

ELGIN MILLS COMPANY.

SINGLE-FLY RÂOTI.



THIS Tent is admirably suited as an office for district officers. It has removable Kanats, 6 feet high, and is similar in other respects to the Bechoba.

No	Size	PRICE	Weight—Mds
1.	16 × 14 feet inside, - -	Rs. 315	7½
2.	16 × 12 feet inside, - -	Rs. 285	7¼
3.	12 × 12 feet inside, - -	Rs. 250	6½

CAWNPORE.

ELGIN MILLS COMPANY.



CAWNPORE.

ELGIN MILLS COMPANY.

. SWISS COTTAGE TENT.



HIS style of Tent is a general favourite. The absence of any centre-pole, the sywans at the side, the semi-circular Bath-room at the back, and the sheltered bay in front, which, when enclosed with "chicks," forms a convenient ante-room or office, combine to render it one of the most comfortable Tents made. The Kanats are 6 feet high, and the Tent has four folds of cloth throughout.

No.	Size	PRICE	Weight—Mds.
1.	16 feet square inside, - -	Rs. 521	13
2.	14 feet square inside, - -	Rs. 440	10½
3.	13 feet square inside, - -	Rs. 411	10
4.	12 feet square inside, - -	Rs. 378	9¾
5.	10 feet square inside, - -	Rs. 308	8½

If double fly to Bath-room be required, Rs. 25 extra will be charged. Durries for front bay and Bath-room are only supplied when specially ordered, also at an extra charge.

CAWNPORE.

20
ELGIN MILLS COMPANY.



CAWNPORE.

ELGIN MILLS COMPANY.

SWISS COTTAGE TENT.

SQUARE ENDED.

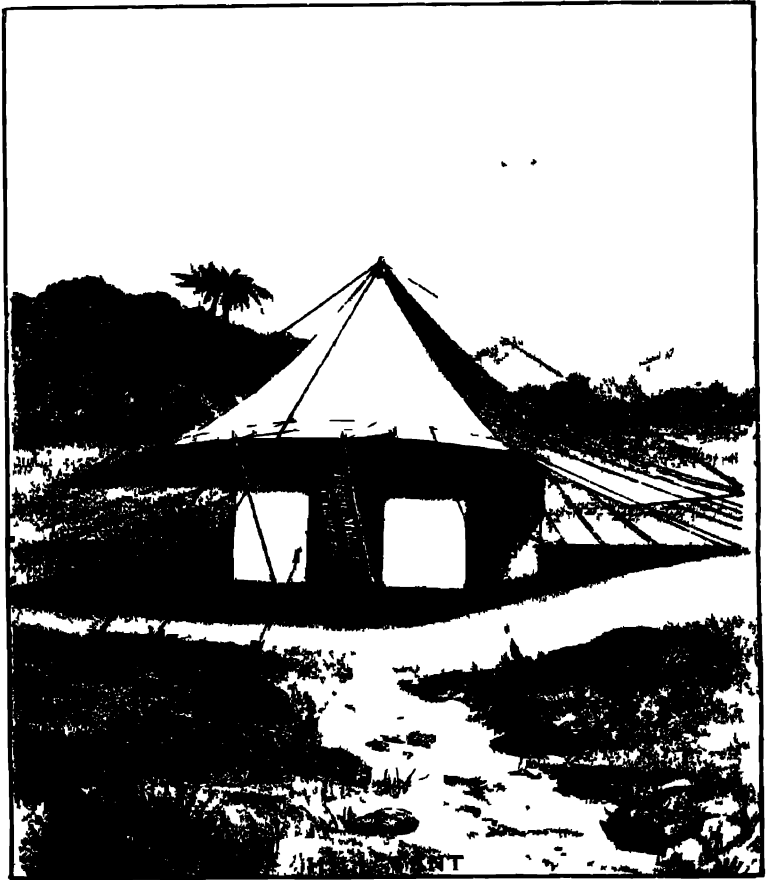


THESE Tents are complete in every respect, like the ordinary Circular-ended Swiss Cottage Tents, but are preferred by many district officers on account of the extra accommodation afforded by having the ends square.

Their prices and weights are :

No	Size	PRICE	Weight—Mds.
1.	16 × 16 feet inside, - -	Rs. 540	13
2.	14 × 14 feet inside, - -	Rs. 458	10½
3.	13 × 13 feet inside, - -	Rs. 436	10
4.	12 × 12 feet inside, - -	Rs. 405	9½
5.	10 × 10 feet inside, - -	Rs. 328	8½

CAWNPORE.

ELGIN MILLS COMPANY.**CAWNPORE.**

ELGIN MILLS COMPANY.

HILL TENT.



THESE Tents are in great demand where lightness is a desideratum. They differ from the larger Regulation Tents in having only a single Kanat or wall. The open sywans at the sides are most useful for sheltering servants, luggage, &c., and when enclosed form most convenient dressing or bath rooms. The ordinary sizes and weights are :

No	Size	PRICE	Weight—Mds
1.	11 feet square inside, - -	Rs. 350	8½
2.	13 feet square inside, - -	Rs. 325	8½
3.	12 feet square inside, - -	Rs. 300	8½
4.	10 feet square inside, - -	Rs. 250	7

The above have four folds of cloth throughout, Kanats 6 feet high, and are complete with Sywans, Durrie, Purdahs, Chicks, Saleeta, Pegs, and Mallet. With both Sywans enclosed, the prices are :

No	Size.	PRICE	Weight—Mds
1.	14 feet square inside, - -	Rs. 426	11
2.	13 feet square inside, - -	Rs. 400	10
3.	12 feet square inside, - -	Rs. 372	9½
4.	10 feet square inside, - -	Rs. 314	8½

Durries for Bath-rooms are charged extra.

CAWNPORE.

ELGIN MILLS COMPANY.



CAWNPORE.

ELGIN MILLS COMPANY

BECHOBA TENT

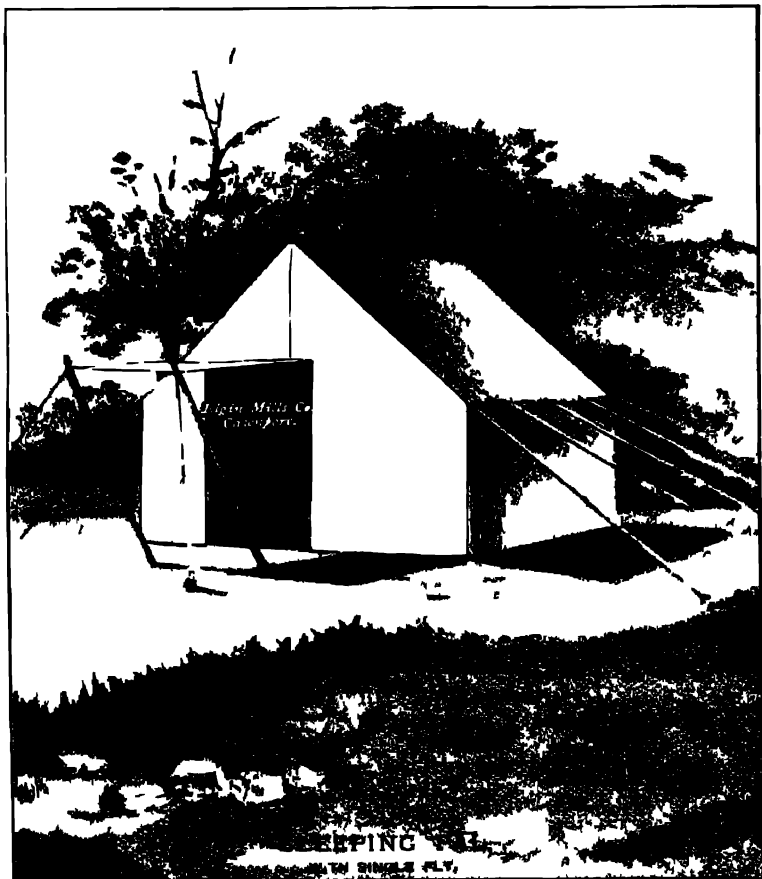


THE characteristic feature of these Tents is that they have no inside pole, the whole weight of the roof resting upon four external poles placed at the corners. The Kanats are removable. The clear accommodation inside, and their lightness as compared with Hill Tents, recommend them for many purposes as a substitute, but they require to be more carefully pitched and handled. The Kanats are 6 feet high, and have four folds of cloth, while the fly of the Tent is composed of five folds.

No.	Size	Price	Weight—Mbs
1	12 feet square inside,	Rs 191	6½
2	10 feet square inside,	Rs 153	5½
3	9 feet square inside,	Rs 140	5¼
4	8 feet square inside,	Rs 128	5

CAWNPORE

26
ELGIN MILLS COMPANY.



CAWNPORE.

ELGIN MILLS COMPANY.

SLEEPING PAL.



HIS description of Tent being chiefly required as a detached room for use at night, the object aimed at is chiefly warmth. They are, therefore, usually made with only one door, and the walls are permanently attached to the roof, thus securing that freedom from draught which is so desirable. It has four folds of cloth throughout, and is complete in all respects as the Shooting Pal.

No	Size	PRICE.	Weight - Mds
1.	16 feet square inside, - -	Rs. 191	3½
2.	12 feet square inside, - -	Rs. 113	2¼
3.	10 feet square inside, - -	Rs. 95	2
4.	8 feet square inside, - -	Rs. 80	1½

Bath-rooms for above supplied only when ordered.

CAWNPORE.

ELGIN MILLS COMPANY.



CAWNPORE.

ELGIN MILLS COMPANY.

SHOOTING PAL.



THE illustration represents a small Tent specially suited for sporting purposes — lightness, coupled with comfort, being the main objects aimed at. They can be strongly recommended for the purpose for which they are made. The Kanats are 4 feet high; the outer fly is composed of two folds of cloth, and the inner three folds. The Tent is complete, with painted Bamboo Poles and Ridge, Carpets, Saleela, Iron Pegs, and Hammer.

No	Size	PRICE	Weight.—Mds.
1.	12 feet square inside, - -	Rs. 170	2½
2.	10 feet square inside, - -	Rs. 138	2¼
3.	9 feet square inside, - -	Rs. 125	2¼
4.	8 feet square inside, - -	Rs. 111	1¾

Bath-room for above supplied only when ordered.

CAWNPORE.

ELGIN MILLS COMPANY,

NAWAB SALAR JUNG BAHADUR



CAWNPORE.

ELGIN MILLS COMPANY.

CABUL PATTERN SERVICE MESS TENT.



HIS is an invaluable Mess Tent where weight is a consideration, and for quick marching. It has a double fly, with 4½-foot walls attached, and lacing at the corners to admit of their being rolled up. There is a Verandah in front and a Serving-room in the rear, and it is complete with Purdahs (lacing to the top), Durrie, painted Bamboo Poles (jointed), Pegs, Mallet, and Saleeta. The usual sizes and weights are :

No.	Size.	PRICE.	Weight—Lbs.
1.	18 × 12 feet, - -	Rs. 310	about 400
2.	15 × 12 feet, - -	Rs. 282	about 350
3.	12 × 12 feet, - -	Rs. 246	about 280
4.	10 × 10 feet, - -	Rs. 200	about 225

Chicks for the Verandah can be supplied at a small extra cost.

CAWNPORE.

ELGIN MILLS COMPANY.



CAWNPORE.

ELGIN MILLS COMPANY.

MINIATURE SWISS COTTAGE TENT.



THIS resembles a Swiss Cottage Tent in general appearance, but is of a smaller size, has lower Kanats, and, on account of its portability, is an excellent Tent for parties travelling in the hills. The Kanats are 4 feet high, and are attached to the flies.

No	Size	PRICE	Weight Mds.
1.	12 x 12 feet,	- - Rs. 240	4½
2.	10 x 10 feet, - -	Rs. 175	3½
3.	10 x 9 feet, - -	Rs. 170	3
4.	10 x 8 feet, - -	Rs. 165	2¾
5.	9 x 9 feet, - -	Rs. 160	2½
6.	9 x 8 feet, - -	Rs. 150	about 2½

CASHMERE TENT.



THIS somewhat resembles the Miniature Swiss Cottage Tent, with an additional Kanat to enclose front Verandah during wet weather. Double fly to Bathroom, and detachable walls, 4 feet high. Complete as above.

No	Size	PRICE.	Weight—Mds.
1.	12 x 12 feet inside, - -	Rs. 265	5
2.	10 x 10 feet inside, - -	Rs. 183	3¾
3.	10 x 9 feet inside, - -	Rs. 175	3½
4.	10 x 8 feet inside, - -	Rs. 166	3½
5.	9 x 8 feet inside, - -	Rs. 159	3

CAWNPORE.

ELGIN MILLS COMPANY.**CAWNPORE.**

ELGIN MILLS COMPANY.

OFFICERS' 80 LB. LIGHT FIELD SERVICE TENT.

NEW PATTERN.



THIS is a Double-fly Tent, similar in appearance to the Cabul Pal, but with more accommodation, and a maximum weight of 80 lbs.

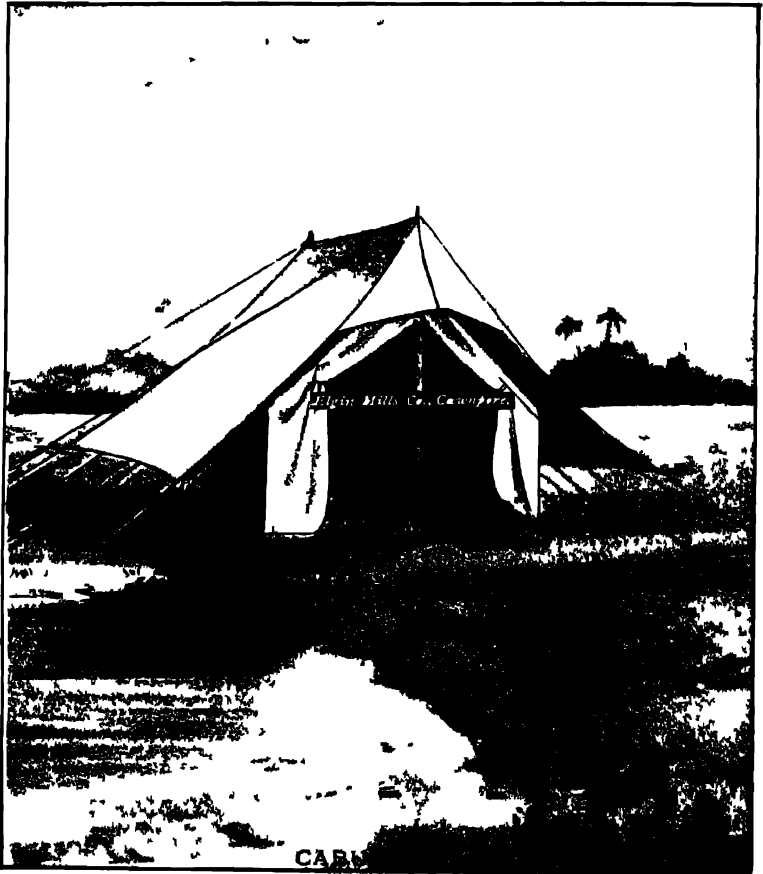
No	Size		PRICE
1.	8 × 10 feet,	- -	Rs. 88 0 0
2.	8 × 8 feet,	- -	Rs. 80 0 0

EXTRAS.

Bath-room,	- - -	Rs. 18 0 0
Verandah,	- - -	Rs. 12 0 0
Carpet,	- - -	Rs. 10 8 0

CAWNPORE.

ELGIN MILLS COMPANY.



CAWNPORE

ELGIN MILLS COMPANY.

CABUL PAL.



THESE Tents first came into use during the late Cabul campaign, since which time their lightness, simplicity, and low price have secured for them a steady demand for general marching purposes. When required they can be made with a small semi-circular Bath-room at the back. The following are the regulation sizes and weights :

FIELD OFFICERS'

Outer fly two folds of cloth, the rest three folds throughout. Height of inner fly, 7 feet 9 inches; Kanats, 4 feet. Complete with Saleeta—convertible into Carpet—Iron Pegs, and Hammer.

No.	Size	PRICE	Weight - Lbs.
1.	9 x 8 feet inside, - - - -	Rs. 118	135
2.	9 x 8 feet, with Bath-room of two cloths, - - - -	Rs. 135	145
3.	9 x 8 feet, outer fly extended to the ground, and with Bath-room, - - - -	Rs. 141	150

SUBALTERNS'

Double fly. Upper fly two folds of light cloth, outer being drill; rest three folds throughout. Inner height, 6 feet 9 inches; Kanats, 3 feet. Complete with Saleetas, Iron Pegs, and Hammer, but without Carpet.

No.	Size	PRICE	Weight - Lbs.
1.	7 x 7 feet inside, - - - -	Rs. 75	80
2.	7 x 7 feet, with Bath-room attached, - - - -	Rs. 87	88
3.	7 x 7 feet, outer fly extended to the ground, and with Bath room, - - - -	Rs. 90	90

N.B.—No. 3 may be had without the Bath-room for Rs. 12 less.

A Blanket or Serge lining for either of the above, attachable at pleasure, can be supplied to order at the following rates :

For 9 x 8 feet, - - - -	Rs. 35
For 7 x 7 feet, - - - -	Rs. 26

CAWNPORE.

ELGIN MILLS COMPANY.



CAMPDORF

ELGIN MILLS COMPANY.

THE KINLOCH PATTERN SHOOTING TENT.



HIS is a light Double-fly Tent, invented by Col. Kinloch, for shooting purposes. It is fully described by him in his book on "Large Game in India."

Size, 10 x 7½ feet, - - PRICE, Rs. 92. Weight, 90 lbs.

CAWNPORE.

ELGIN MILLS COMPANY.



DOUBLE ENJOYABLE PRIVATE'S MOUNTAIN BATTERY TENT

GOVERNMENT PATTERN

Size, 8 x 12 feet

PRICE, Rs 88

Weight, 115 lbs

ELGIN MILLS COMPANY.



SINGLE-FLY MOUNTAIN BATTERY TENT FOR SERVANTS

GOVERNMENT PATTERN

Size, 9 x 10 feet,

PRICE, Rs 63

Weight, 105 lbs

CAWNPORE.

ELGIN MILLS COMPANY.



WAB - ALAR JUNG CAHADUK
THE QUTCHERRY TENT.

CAWNPORE.

ELGIN MILLS COMPANY.

THE CUTCHERRY TENT.



THIS is composed of a Shamiana, 52 × 36 feet, with miniature Tent, 15 × 14 feet under it, and is considered a first-rate Tent for district officials to hold court in.

The poles of the Shamiana are so constructed that, in wet weather, they may be lowered without striking the Tent, and thus provide a sloping roof to admit of water rapidly draining off. The Tent is complete with Durries, Purdahs, Chicks, Pegs, Mallet, and Saleetas.

PRICE, Rs. 1252. Weight—19 mds.

CAWNPORE.

ELGIN MILLS COMPANY.



CAWNPORE.

ELGIN MILLS COMPANY.

THE ELGIN MILLS COMPANY

THE LAWN CANOPY



OR Tennis, Badminton, and Cricket Clubs. The sides are removable, and being very light, the Tent can be pitched in five minutes. The usual sizes are :

No	Size	Price
1.	12 x 12 feet, - - - -	Rs. 140
2.	10 x 10 feet, - - - -	Rs. 110
3.	9 x 9 feet, - - - -	Rs. 92
4.	8 x 8 feet, - - - -	Rs. 80

Carpets only supplied when ordered.

CAWNPORE.

ELGIN MILLS COMPANY.



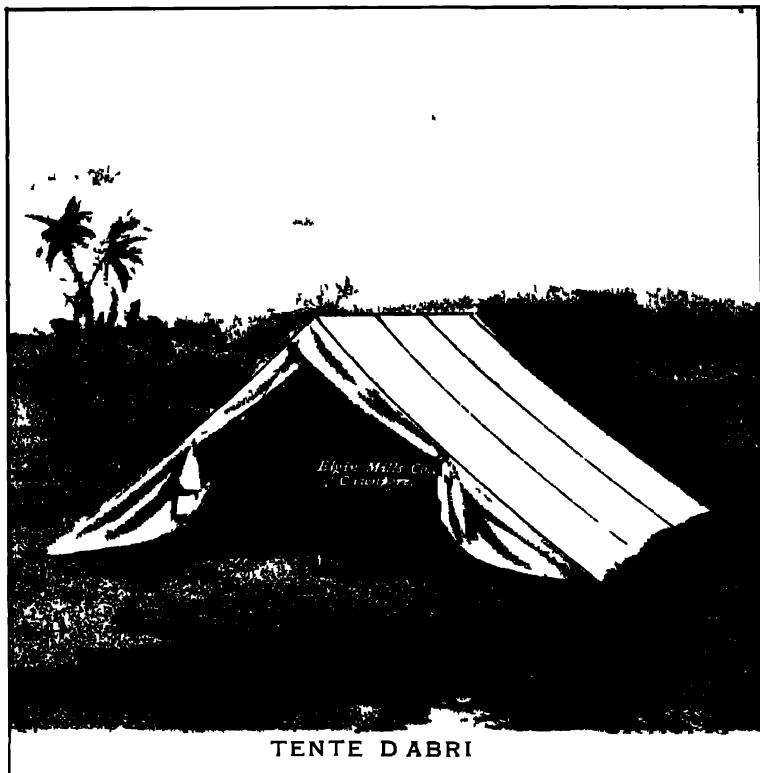
TENTS, REGIMENTAL COMPLETE GENERAL SERVICE

GOVERNMENT PATTERN.

No	Size			PRICE	Weight—lbs
1	14 × 14 feet,	-	-	Rs 85	160
2	8 × 14 feet,	-	-	Rs 60	80
3	7 × 7 feet,	-	-	Rs. 40	40

CAWNPORE.

ELGIN MILLS COMPANY.



TENTE DABRI

FOR Followers and Officers' Servants. This is composed of a single fly of stout Drill-dyed Khaki, or Tan Colour.

No	Size	PRICE	Weight—Lbs
1.	8 × 7 feet,	Rs. 20	20
2.	7 × 6½ feet,	Rs. 15	16

CAWNPORE.

ELGIN MILLS COMPANY.



SERVANTS PAL

THE usual sizes and weights are

No	Size	PRICE	Weight	Mts
1	15 feet square inside,	Rs. 84	24	
2	12 feet square inside,	Rs. 60	13	
3	10 feet square inside,	Rs. 55	11	
4	8 feet square inside,	Rs. 45	11	
5	7 feet square inside,	Rs. 35	11	
6	6 feet square inside	Rs. 30	11	
POLICE PAL — 16 x 15 feet inside,		Rs. 86	24	
ASCAR PAL — 16 x 16 feet inside,		Rs. 94	31	
SPOY PAL — 32 x 16 feet inside,		Rs. 170	5	

CAWNPORE.

ELGIN MILLS COMPANY.

WAS SALAR JUNG BARRACK.



SINGLE-FLY NATIVE OFFICERS' TENT

THIS is a Single-fly Tent, and owing to its extreme lightness and nominal cost is in great demand. The usual sizes and weights are

No	Size	PRICE	Weight
1.	8 x 8 feet, - - - -	Rs. 45	45 lbs
2.	7 x 7 feet, - - - -	Rs. 38	40
3.	7 x 6 feet, - - - -	Rs. 33	36

Carpets only supplied when ordered.

CAWNPORE.

ELGIN MILLS COMPANY.



CAWNPORE.

ELGIN MILLS COMPANY.

DOUBLE-FLY NATIVE OFFICERS' TENT.

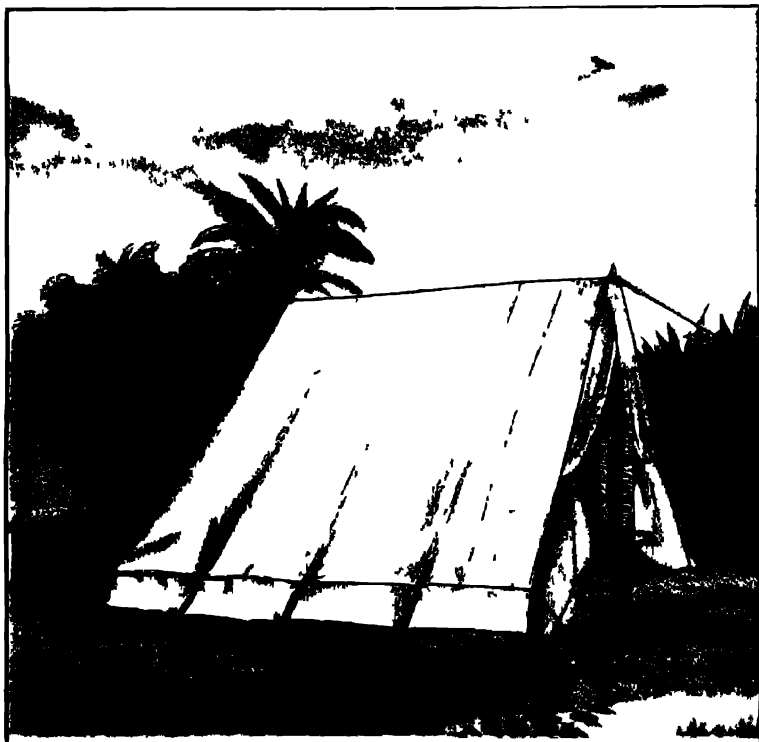


THESE Tents are similar in appearance to the Cabul Pal, but they have less accommodation and lower poles. The sizes usually supplied are :

No	Size	PRICE	Weight -Lbs
1.	6 x 6 feet,	Rs 48	60
2.	6 x 5 feet,	Rs 45	55

Bath-rooms and Durries only supplied to order at an extra charge.

CAWNPORE.

ELGIN MILLS COMPANY.**SOWAR PALS**

With circular end of three folds of cloth, and 1 foot wall
Size, 10 x 8 feet, PRICE, RS 28 Weight, 30 lbs.
Any other size can be made if desired

CAWNPORE.

ELGIN MILLS COMPANY.



STABLES

Four folds of cloth, walls on three sides

No	Size	Price
1	32 × 12 feet inside, with 4 stalls,	Ks 222
2	24 × 12 feet inside, with 3 stalls,	Ks 182
3	16 × 12 feet inside, with 2 stalls,	Ks 150

CAWNPORE.

ELGIN MILLS COMPANY,



**ELGIN MILLS COMPANY'S PALM
CAWNPORE.**

ELGIN MILLS COMPANY.

THE ELGIN TROOPERS' PAL.

This is the Tent referred to in the Quarter-Master General's circular, No. 40, of the *13th September, 1890*, adopting it as the

STANDARD PATTERN TENT FOR NATIVE CAVALRY.

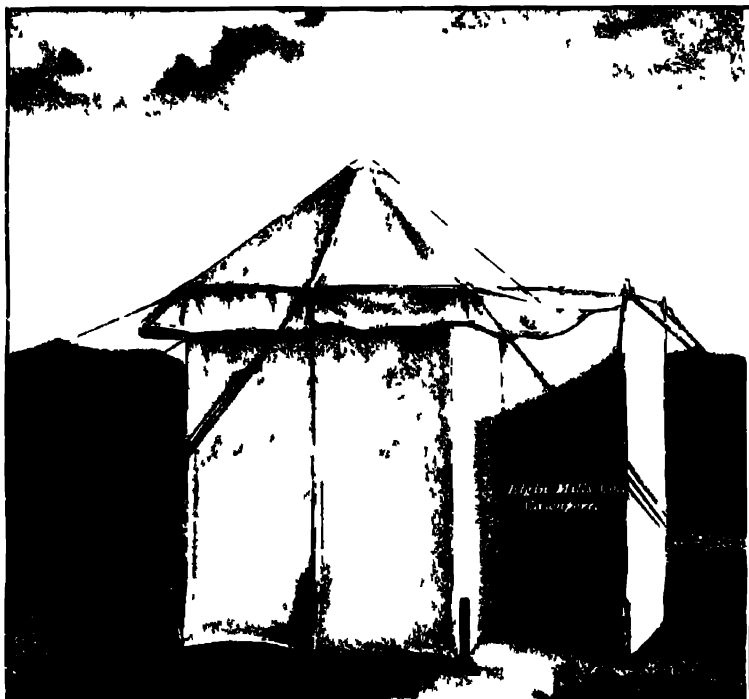
It is made to accommodate 6 troopers with their accoutrements, and weighs only 45 lbs. The price is Rs. 36 each, a reduction being made for large quantities. If made of *fast dyed* English Khaki Drill the price is Rs. 39 8 0 each. The shape is decagonal. Diameter, 14 feet. Height, 7 feet.

These Tents are capable of being pitched as **Hospital Awnings** at a very trifling extra cost. Particulars on application.

W. H. H. &
SALAR JUNG LIBRARY

CAWNPORE.

ELGIN MILLS COMPANY.



NECESSARY TENT

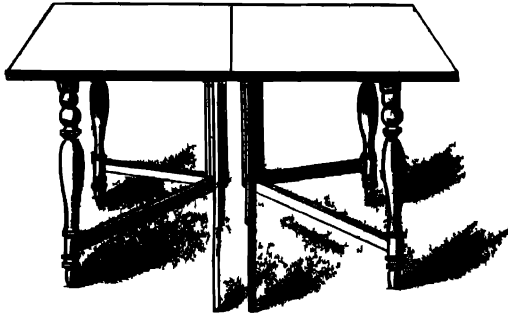
OF THREE FOLDS OF CLOTH THROUGHOUT

N	Size	PRICE	WEEK	MO
1	6 feet square inside,	Rs 45	14	
2	5 feet square inside,	Rs 40	14	
3	4 feet square inside,	Rs 30	1	

CAWNPORE.

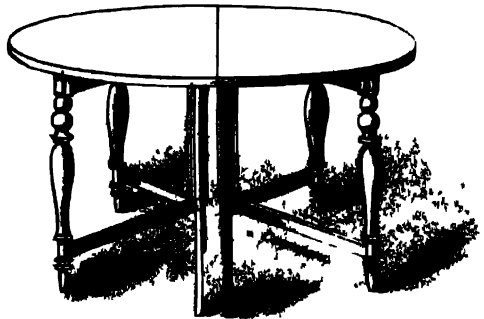
ELGIN MILLS COMPANY.

CAMP SQUARE TABLE.



4 x 4 feet Rs 18

CAMP ROUND TABLE



4 feet diameter. Rs 18

CAWNPORE

ELGIN MILLS COMPANY.



CAWNPORE.

ELGIN MILLS COMPANY.

COLONEL YOUNG'S PATENT VALISE TENT



THIS small Tent is specially made to meet the requirements of officers proceeding on service where Tents are not allowed to be taken. They are the invention of Colonel G. F. Young, A.Q.M.G., Simla, and are made of waterproof material throughout; the ground sheet being a stout English waterproof sheet. The total weight is only 12 lbs., the size being $6\frac{1}{2} \times 4 \times 3\frac{1}{2}$ feet high. The price is Rs. 30.

They are capable of being used :

1. AS A TENT.
2. AS A SLEEPING BAG.
3. AS A VALISE FOR PACKING BEDDING, &c

As either 1 or 2 they will be found invaluable for cold and damp climates, either when shooting in Cashmere or on active service with a kit limited to 40 lbs.; in fact, wherever the climate is cold and Tents cannot be taken. Even inside an ordinary Tent they are often most useful on service as a Sleeping Bag.

They have been thoroughly tested in Cashmere, and during the last Black Mountain Expedition were found invaluable on all occasions. They are so constructed that should the poles be lost they can be pitched with ordinary pieces of stick, 4 feet long, cut from any tree.

CAWNPORE.

ELGIN MILLS COMPANY.



THE ELGIN MILLS IMPROVED SURVEY UMBRELLA.

CAWNPORE

ELGIN MILLS COMPANY.

IMPROVED SURVEY UMBRELLA.



OUR Improved Pattern Survey Umbrella has been specially designed to meet the requirements of officers engaged on survey or district work.

The Umbrella is 7 feet in diameter, and is made in the best and most substantial manner throughout, with a view to stand rough usage. The cover being of three thicknesses of cloth (the outer of strong white Drill, and the lining of dark blue), it will be found a most efficient protection even against the hottest sun. The pole is of tough wood, with a strong pointed iron shoe at the lower end, and the cover is securely attached to the ends of the ribs by strong copper wire lacing, passing through leather tabs in the cover and brass ferrules at the ends of the ribs. It can easily be carried by a coolie.

The Umbrella will be found most useful when halting for a short time for lunch or rest, or on survey work, when taking observations with a theodolite or other instrument. In such cases it will be found convenient to pitch the umbrella, and thus dispense with the necessity of a coolie holding it. To pitch the umbrella, it is recommended that a tent peg be first driven about a foot into the ground and removed. If the end of the pole be inserted in the hole thus formed and the earth rammed round, the umbrella will then stand firmly by itself even in a stiff breeze. In early morning or evening, when the sun is low, it will be found convenient to pitch the Umbrella in an inclined position towards the sun, and thus gain more complete shelter.

These Improved Survey Umbrellas are made on a pattern furnished us by an officer of great experience in their use, and they have, in practical work, for some years proved most efficient and satisfactory.

**NO SPORTSMAN OR ENGINEER ENGAGED ON SURVEY
WORK SHOULD BE WITHOUT ONE.**

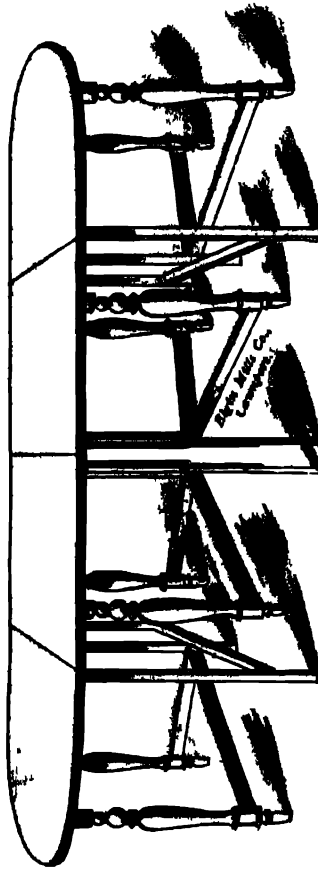
N.B.—These Umbrellas have no ratch, but are kept open by a simple self-acting arrangement. To open the Umbrella turn it upside down, with the cap resting on the ground, and push the sliding ferrule downwards until it reaches the stop. To close the Umbrella stand it upright with the spike on the ground and pull the sliding ferrule downwards.

PRICE, complete with cover of strong sacking and leather strap,
Rs. 16 nett.

CAWNPORE.

ELGIN MILLS COMPANY.

MESS DINING TABLE.
WITH CIRCULAR ENDS.



Size	Price.
16 x 4 feet, in 8 pieces.	Rs. 72
12 x 4 feet, in 6 pieces.	Rs. 54
8 x 4 feet, in 4 pieces.	Rs. 36

These are so made that they can be packed into convenient parcels.

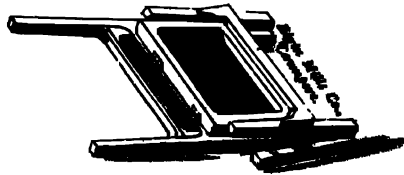
CAWNPORE.

ELGIN MILLS COMPANY.

CAMP FOLDING CHAIRS.

PRICE, Rs. 9 each.

WITH CANE OR LEATHER SEATS



CLOSED

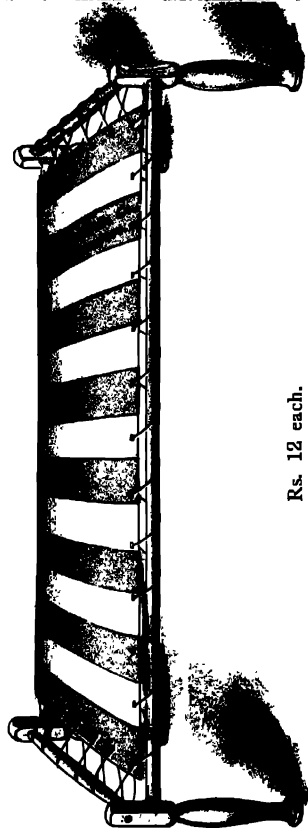


OPEN.

CAWNPORE.

ELGIN MILLS COMPANY,

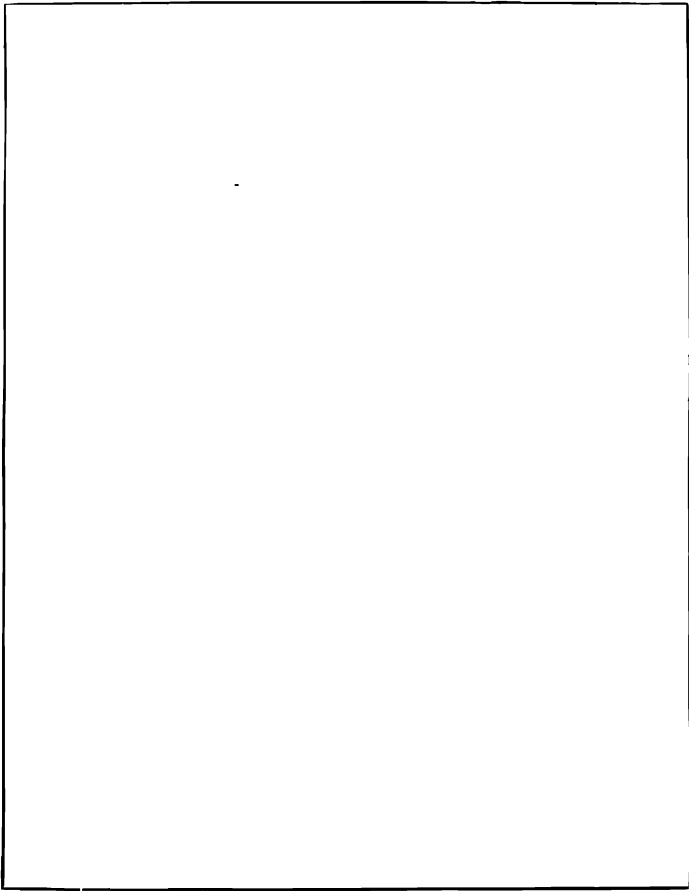
CASHMERE CAMP BEDS.
WITH STRAPS OR LACING ROPES.



Rs. 12 each.

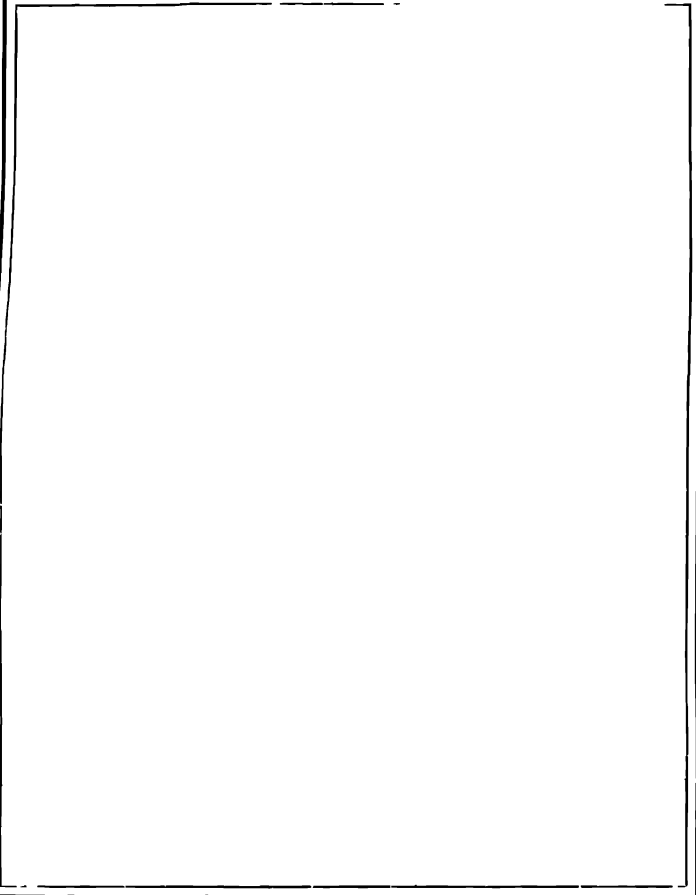
CAWNPORE.

ELGIN MILLS COMPANY.



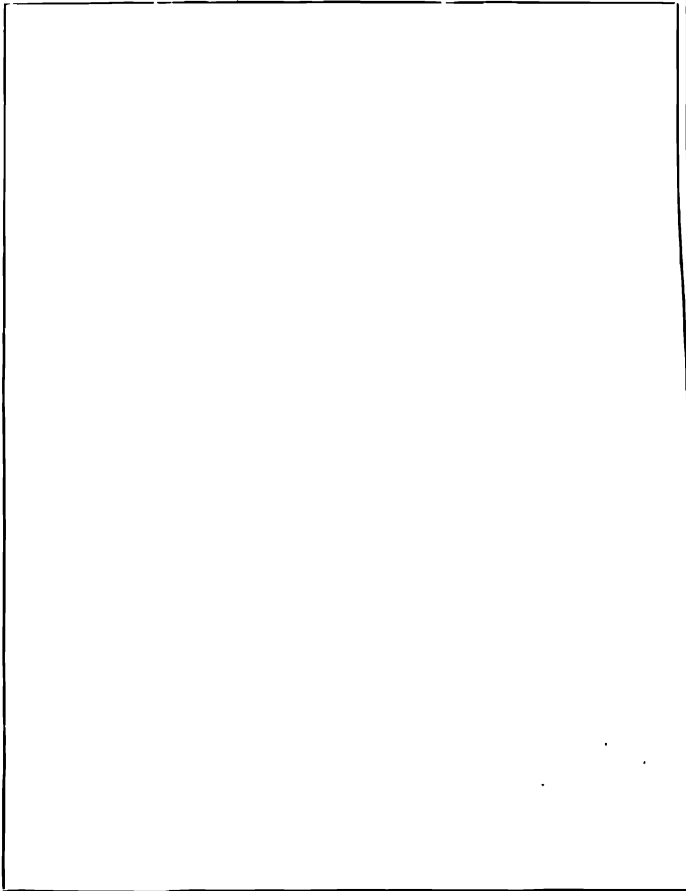
CAWNPORE.

ELGIN MILLS COMPANY.



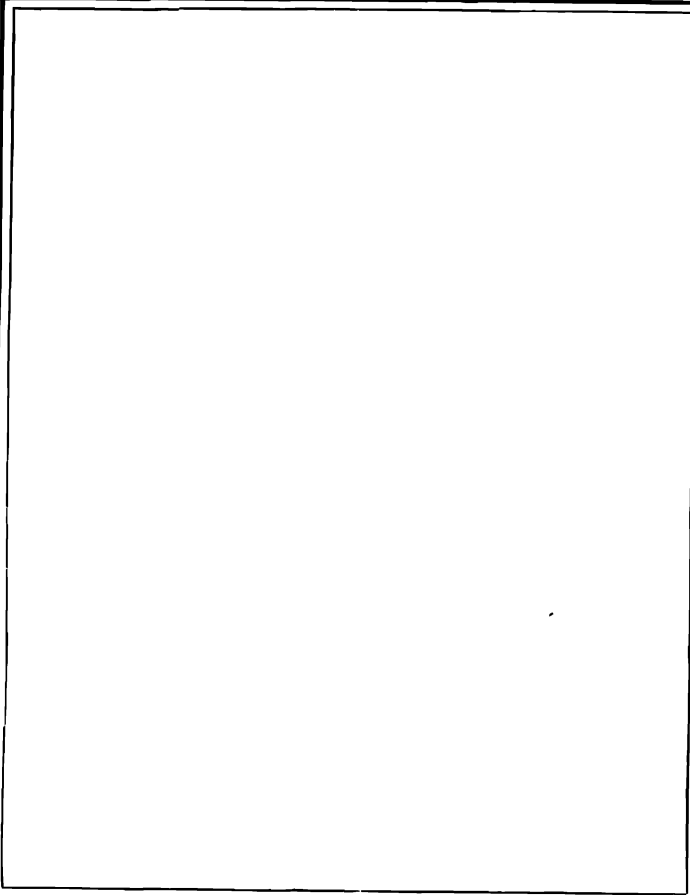
CAWNPORE.

ELGIN MILLS COMPANY.



CAWNPORE.

ELGIN MILLS COMPANY.



CAWNPORE.

ELGIN MILLS COMPANY.

ELGIN MILLS COMPANY.

A FEW extracts selected from numerous letters addressed to the Company are appended to show the estimation in which their Tents are held.

From MAJOR MATHIAS, District Superintendent Police, Bastool.

Dated 9th October 1872.

"I was much pleased with the set and its appearance. It has now rained for twenty-four hours consecutively, and there is not a damp spot in the interior, nor has water dripped from the upper fly on to the interior one. The Tent appears to me to be a very superior one."

From J. N. TRESIDDER, Esq., M.D., Dy. Inspector General, Umballa Circle.

Dated 10th February, 1873.

"Having during the past six months used a Hill Tent and a Bechoha Tent, supplied to me by the Elgin Mills Company, I have much pleasure in recording my opinion on the Tents. I consider the materials the best I have ever seen used in Tents. The careful finish, and the brass facing holes, which allow of the Tent being pitched without the Tent hooks (which do so much damage to the cord and holes), are most satisfactory. The pitch of the fly, whilst elegant and pleasing to the eye, is the best I have seen for 'throwing off the water.' After exposure to heavy rain for two days and two nights, the inner fly of the Hill Tent was not wet, and no wet whatever dropped through the outer fly. The Bechoha showed of course dampness through, but not a drop of wet fell anywhere, so that I was as dry and as comfortable in the Bechoha as in the Hill Tent. I attribute this dryness entirely to the good cloth of closely wove even texture, which, when damp, becomes most impervious to wet.

"I must not forget to mention that, owing to the weaving of the cloth also, it has a tendency to part with its water rapidly (very much more rapidly than native wove cloth would do), and thus I was enabled to march with a Tent nearly dry after a few hours' cessation of rain, and my camels were not overloaded by the Tents, as they would have had they been loaded with the same size Tents made of native cloth, and equally exposed to wet as these had been. On the whole, I am perfectly satisfied with the Tents, and would recommend everybody wanting Tents to purchase them made of Elgin Mill Cloth (like dill), instead of common country nosotee."

From J. H. ROBOTMAN, Esq., Surgeon, 63rd Foot, Hazareebaugh.

Dated 6th October, 1873.

"I have received my Tents to-day, and am very much pleased with them both. The Cashmere Tent is a charming one for marching in the hills."

CAWNPORE.

ELGIN MILLS COMPANY.

From CAPTAIN H. A. HOBSON, 22nd Regiment, B. N. I., Mhow.

Dated 16th November, 1873.

"The Tents have come to hand, and have just been pitched. I may safely say I have never seen better ones; they appear to be perfection. I shall certainly recommend your Tents to any one inquiring of me for good ones at a reasonable price."

From CAPTAIN W. H. WILKINS, Survey Department, Delhi.

Dated 19th November, 1873.

"The Tent has arrived all safe, and is certainly the finest Tent I have seen in India, out and away. The material is most excellent, and everything reflects great credit on your mill."

From MAJOR-GENERAL A. CUNNINGHAM, Umballa.

Dated 6th April, 1874.

"All the Tents have answered admirably. They possess several contrivances which add to the convenience of pitching and striking, as well as to the ventilation."

From CAPTAIN J. DE S. ISAACSON, The Royal Scots.

Dated 20th July, 1874.

"I have much pleasure in testifying to the good quality of the Tent supplied to me."

From COLONEL S. A. MADDEN, Commanding 51st Light Infantry.

Dated 28th December, 1874.

"They are the best Tents I have ever used, and are much admired."

*From CAPTAIN C. K. CHATFIELD, President Mess Committee,
51st Light Infantry, Fyzabad.*

Dated 22nd October, 1875.

"I have received the Tents you made for us, and have much pleasure in informing you that the officers of the Regiment are extremely pleased with them in every respect."

CAWNPORE.

ELGIN MILLS COMPANY.

From N. T. RYVES, Esq., Burkhurwan, Chumbarun.

Dated 21st January, 1879.

"I may now add that the Tents have given me every satisfaction. They are well finished, and have the great advantage of being very light."

From DR. HAY, Barli.

Dated 6th August, 1879.

"Allow me to add that, of the many Tents I saw up at the front, none were, in my opinion, equal to that supplied me by you. When cold it was warm, when rainy and snowing it was dry, and when excessively hot in the Kichha Desert, it was cooler than any other of its size and weight, and more so than many a great deal larger and heavier."

From LIEUT.-COLONEL J. G. E. GRIFFITH, Commandant, 16th Bombay Infantry.

‡ Dated Baroda, 25th September, 1885.

"I have received the Field Officers' Cabul Tent, and am very much pleased with same."

From E. W. LASERON, Esq., Superintendent, S. S. R. Survey.

Dated Penang, 20th October, 1885.

"My recommendation procured you the order, as while in India I used one of your Cabul Tents at times when on Revenue Survey duty, and was well satisfied with it. You are, I think, receiving another order for Tents for Department here."

From CAPTAIN M. A. GRAY, B.S.C., Assistant Commissioner.

Dated Golaghat, Assam, 1st December, 1885.

"I beg to acknowledge receipt of your 14 X 14 feet Hill Tent, and 12 X 12 feet Servants' Pal, supplied to order; and to express my unqualified approval of them, now that I have been able to have them put up and to examine them. They are unquestionably as nice Tents as I should wish to possess, and wonderfully reasonable in price."

From MRS. JENKINS.

Dated Lucknow, 20th October, 1887.

"Major Jenkins (17th Lancers) wishes me to mention that the Tents you sold him in April last gave full satisfaction. During the six months we were in Cashmere, we had some very severe rain, and the Tents inside were always quite dry. The Camp Beds, also, were very good."

CAWNPORE.

ELGIN MILLS COMPANY.

From J. F. DUTHIE, Esq., Director, Botanical Department, Northern India.

Dated Saharanpore, 14th November, 1887.

"They are most excellent Tents."

From COLONEL A. M. PHILLIPS, 1st Assistant Political Agent, Kotri.

Dated Kathiawar, 25th November, 1887.

"The Tents are very nicely finished, and I am much pleased with them."

From J. S. BERRSFORD, Esq., Superintending Engineer.

Dated Camp, Agra, 7th December, 1887.

"I am much pleased with the Tent."

From CAPTAIN J. B. R. BUTLER, Mess President, 2nd Queen's.

Dated Deesa, 10th December, 1887.

"We have received the Mess Tents, and are much pleased with the general appearance and workmanship."

From BRIGADIER-GENERAL J. W. M'QUEEN, Commanding P. F. F.

Dated Camp, Edwardesabad, 30th December, 1887.

"I have much pleasure in sending you a cheque for Rs. 252, on account of the Shantiana which you lately sent me, and with which I am much pleased."

From LIEUT.-COLONEL S. D. MADDEN, Commanding 51st Light Infantry.

Dated Fyzabad, 7th March, 187 .

"I may add that my Tents have been pitched for the last three days in heavy rain, and have stood the weather very well. The smaller 8 feet square Tent, single fly, not being still wet through."

From LIEUT.-COLONEL W. H. G. PALMER, 20th M. N. I.

Allygurh.

"I have received the Shooting Pal you sent me, and am much pleased with it. It has met with great approbation from all the officers of the Regiment."

CAWNPORE.

ELGIN MILLS COMPANY.

From W. MITCHELL, ESQ., Rawal Pindi.

Dated 25th December, 1888.

"Would you be so good as to make for me a Yarn-dyed Khaki Tent (Miniature Swiss Cottage), 10 x 10 feet, with Durrie and everything complete.

"Please make the internal fittings as much like those of the Cabul Tent you made for me last March, and which has been the admiration of everybody who has seen it. It has been in constant use in the roughest country, and looks and is as good as the day it left the Mills."

From W. G. UNDERWOOD, ESQ., M. C. S.

Dated Anantapur, 15th January, 1889.

"The Tent arrived safely, and suits admirably."

From MAJOR D. HUTCHINSON, Commanding 32nd Pioneers.

Dated Sikkim Field Force, 10th January, 1889.

"The Tent is an excellent one in every respect."

From G. SUTTON JONES, ESQ., Deoli Irregular Force.

Dated Deoli, 17th August, 1890.

"The New Pattern 80 lb. Tent I got two years ago from you has lasted well through two hot season shoots and a couple of good storms."

From C. W. CROOKSHANK, ESQ., R.E.

Dated Gulmarg, 16th July, 1890

"The short time I have been in this country has been sufficient to convince me of the superiority of your Tents."

From REVEREND H. F. LAFLAMME.

Dated Mission House, Coconada, 11th February, 1891.

"I have had a year's experience with your Tent. It is a perfect gem of a Tent."

CAWNPORE.

ELGIN MILLS COMPANY.

From LIEUTENANT W. A. MATTHEWS, R. A.

Dated Roorkee, 27th February, 1891.

"The Tents arrived safely, and I am pleased with them. They will be very useful for light marching order, with coolies, in the hills."

From BRIGADIER-GENERAL A. G. HAMMOND, *Hazara Field Force.*

Dated Tili, 20th March, 1891.

"The Valise Tent is certainly a success in wind and rain."

From A. G. HUDSON, ESQ., *Revenue Survey.*

Dated Bluwudi, 7th April, 1891.

"The Tents I got from you in 1886 have been in use every field season since I bought them and have needed no repairs to date. Their pitch is perfect."

From COLONEL W. LOKH, *Principal Mayo College, Ajmere.*

Srinagar, 19th May, 1891.

"The Tents you have supplied are excellent in every way."

From LIEUT.-COLONEL J. KEITH, R. A.

Dated Rawal Pindi, 19th June, 1891.

"I have used a Valise Tent during the Hazara Expedition, and have found it very useful. I think it well adapted for the purpose for which it is intended."

From THE PRESIDENT MESS COMMITTEE, *2nd Seaforth Highlanders.*

Dated 23rd November, 1891.

"I am now in receipt of all the Tents ordered by me, and they have given great satisfaction."

From J. H. SINCLAIR, ESQ., C. S.

Dated Tanna, 31st January, 1892.

"You have complied very closely with my directions, and the Tents are very well made. I did not expect the colouring to be so successful (as my reason for adopting it was by no means æsthetic). The blue Tent in particular is, I think, the prettier Tent."

ELGIN MILLS COMPANY.

No 685

Care


Hydram Boundary Com

Sir

August 19. 86

I am pleased by Her
Majesty's Commissioners to
inform you that the trials supplied
by the Elgin Mills for the Hydram
Boundary Commission has given
them great satisfaction. During the
past two years they have been
exposed to very severe weather, but
have lasted well throughout.

Yours truly



Wm. J. Gate, Captain

Elgin Mills
Cawnpore

CAWNPORE.

ELGIN MILLS COMPANY.

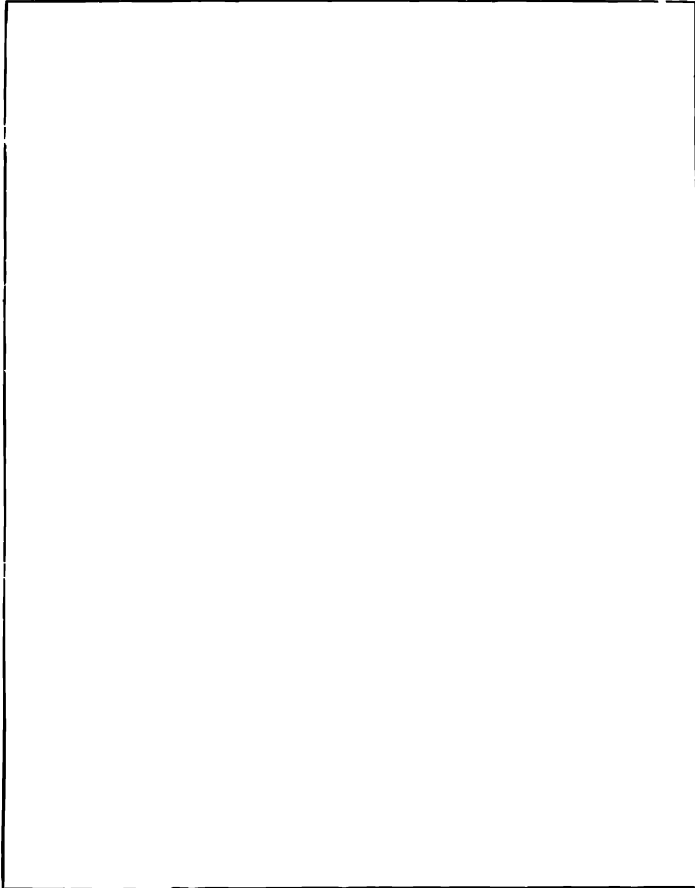
I N D E X.

	PAGE>
Durbar Tent,	4, 5
The "Civil Service Cup" Shamiana,	6, 7
Shamiana,	8, 9
Double-poled Regulation Tent,	10, 11
Single-poled Regulation Tent,	12, 13
Double-fly Râoti,	14, 15
Single-fly Râoti,	16, 17
Swiss Cottage Tent,	18, 19
Swiss Cottage Tent, square ended,	20, 21
Hill Tent,	22, 23
Bechoha (or Poleless) Tent,	24, 25
Sleeping Pal,	26, 27
Shooting Pal,	28, 29
Cabul Pattern Service Mess Tent,	30, 31
Miniature Swiss Cottage Tent,	32, 33
Cashmere Tent,	33
Officers' 8o-Lb. Light Field Service Tent,	34, 35
Cabul Pal,	36, 37
The Kinloch Pattern Shooting Tent,	38, 39
Double-fly European Privates' Mountain Battery Tent,	40
Single-fly Mountain Battery Tent for Servants,	41
The Cutcherry Tent,	42, 43
The Lawn Canopy,	44, 45
Tents, Regimental Complete General Service,	46
Tente d'Abri,	47
Servants' Pal,	48
Single-fly Native Officers' Tent,	49
Double-fly Native Officers' Tent,	50, 51
Sowar Pals,	52
Stables,	53
The Elgin Troopers' Pal,	54, 55
Necessary Tent,	56
Camp Square Table,	57
Camp Round Table,	57
Colonel Young's Patent Valise Tent,	58, 59
The Elgin Mills Improved Survey Umbrella,	60, 61
Mess Dining Table,	62
Camp Folding Chairs,	63
Cashmere Camp Beds,	64
Testimonials,	69-75

Elgin Mills Co., Cawnpore.

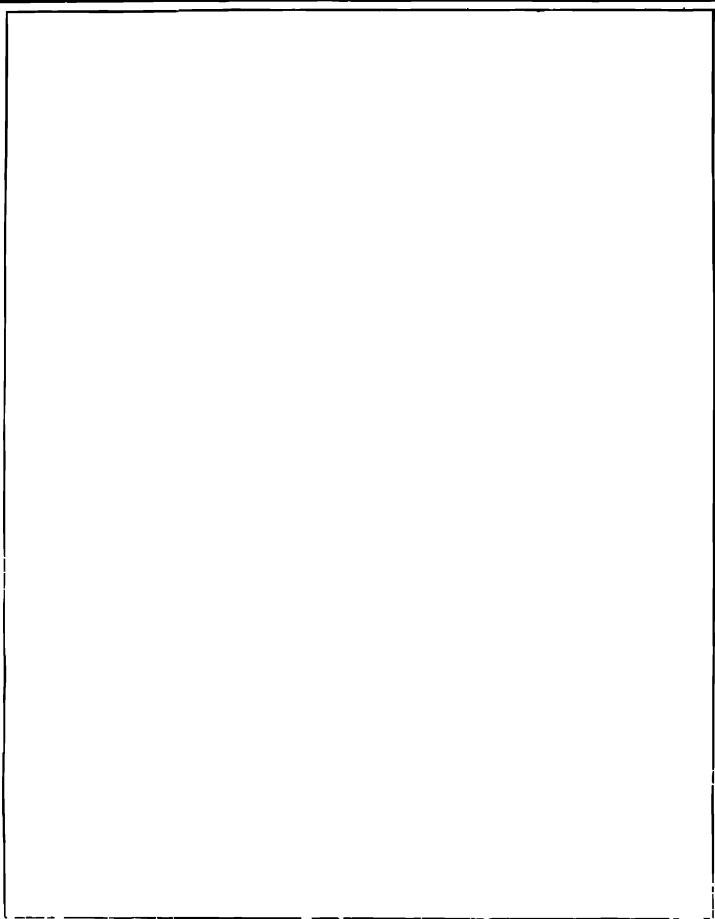
CAWNPORE.

ELGIN MILLS COMPANY.



CAWNPORE.

ELGIN MILLS COMPANY.

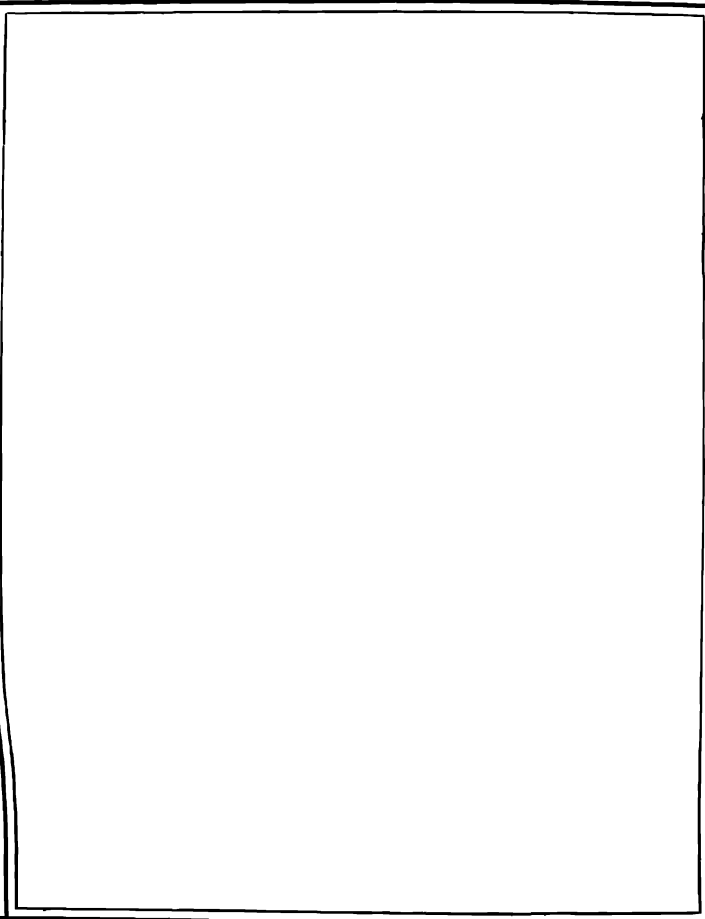


CAWNPORE.

ELGIN MILLS COMPANY.

CAWNPORE.

ELGIN MILLS COMPANY.



CAWNPORE.

