

Historic, archived document

Do not assume content reflects current scientific knowledge, policies, or practices.

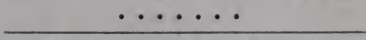
62,59

THE
UNITED STATES
NURSERIES

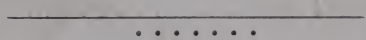


1892

W.



TRADE CATALOGUE



PITCHER & MANDA,

SHORT HILLS,

NEW JERSEY.

EUROPEAN BRANCH:
HEXTABLE, KENT,
ENGLAND.

SPRING, 1892.

CONTENTS.

Choice Flower Seeds, Novelties	5
Choice Flower Seeds, in Bulk	9
Hardy Perennial Seed	18
General List of Bulbs	22
Vegetable Seeds	29
Agricultural Seeds	37
Chrysanthemums	41
Palms	46
Ferns	49
Flowering and Foliage Plants	50
Cypripediums	57
Hardy Perennials or Herbaceous Plants	58
Clematis	69
Special Imported Stock for Florists	69
Special Offers to Florists for Easter and Store Decorations	70
Implement and Garden Requisites	73
Horticultural Books	77

TO OUR CUSTOMERS.

The United States Nurseries are situated in Short Hills, N. J., on the D., L. & Western R. R., only 17 miles from New York City. We are pleased to see visitors at any time. A personal visit will facilitate selection of plants and afford an opportunity of seeing the extent of our nurseries.

Terms : Accounts are made up monthly. Our patrons are requested to remit by checks, express, or P. O. money orders on New York Post Office, or currency in registered letters, as we cannot be responsible for money in unregistered letters. From unknown correspondents either a remittance or a reference is required with each order.

No Charges are made for boxes, packing or delivery to the railroad or express office ; bags only are charged for. All plants are carefully packed and may be forwarded safely to any part of the globe.

Orders are Solicited at as early a date as possible, that we may have ample time for their execution. Please write plainly, name, post office, express office, and any other necessary information as to the best method of forwarding.

Advices of Shipment, together with the invoice, are sent the same day goods are forwarded.

Complaints, if any, should be made on receipt of goods. We promise prompt and just treatment of all claims presented. We guarantee safe arrival of plants sent by express, *but do not assume any responsibility if sent by freight.*

Our American seeds have been grown for us by men who are the acknowledged leaders in this branch of farming in the country, and our imported seeds have been procured from the most reliable sources abroad. The crops of many of the leading kinds of vegetable seeds are short this year. We have taken every pains to have the original stock pure and true ; the crops have been personally inspected while growing by our representative ; and every care has been taken that the seed be properly ripened, carefully dried and cleaned, and all inferior and imperfect specimens rejected.

Prices are subject to change without notice, and to the goods being unsold on receipt of order. We would advise dealers to place their orders early, as prices are likely to advance at the beginning of the selling season.

Our travelers are in all sections of the country the year round and would be pleased to call upon notification to that effect, with prices and samples.

We import, grow and deal extensively in the following, and are prepared, with the heavy stock we carry, to quote advantageous prices:

CHOICE FLOWER SEEDS, RELIABLE VEGETABLE SEEDS, RARE ORCHIDS, NEW CHRYSANTHEMUMS, SCARCE AND POPULAR PALMS, MAGNIFICENT FOLIAGE PLANTS, FERNS OF EVERY DESCRIPTION AND USEFUL HARDY PLANTS.

NOTICE!



In our last Fall's Catalogue we announced to our friends and customers that we had added to our extensive Plant establishment,

SEED AND BULB DEPARTMENTS,

And it is with great pleasure we take this opportunity to thank our patrons for the gratifying support with which this announcement was met, which encourages us to believe that in a very short time we will attain the same prominence in this important line we already enjoy in the Plant business.

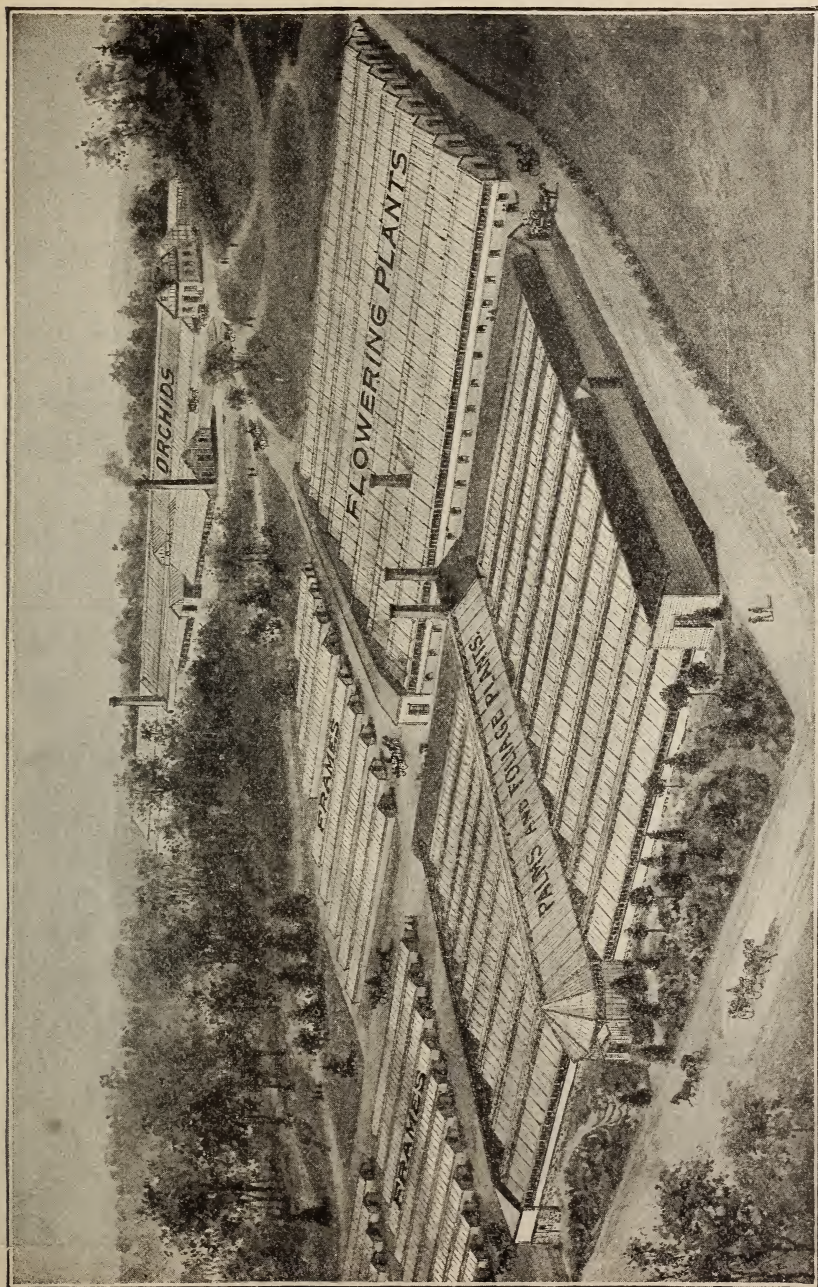
By a close scrutiny of our prices they will be found to compare with those of any responsible house, and feel that we do not overestimate ourselves when we say that no more care is possible than that exercised by us in the selection and growing of Seeds, Plants and Bulbs; our aim being that nothing shall leave our establishment **unless in the best of condition and true to name.**

PITCHER & MANDA,

UNITED STATES NURSERIES,

SHORT HILLS, N. J.

JANUARY, 1892.



VIEW OF ESTABLISHMENT.



CHOICE STRAINS OF FLORISTS' FLOWERS.

Choice Flower Seed Novelties.

TUBEROUS BEGONIAS.

This is a class of plants which has been developed within the past 15 or 20 years by the skill of the hybridizer. Now we have in them bright scarlet, more brilliant than Geraniums, and in all shades of rose-red, pink to white, and of late we have brilliant yellows, from pale straw-color to brilliant bronze, and all both double and single. Our collection of these plants is very large, and the past season we have carefully saved seed from the best flowers, which we offer as below. This seed of our own saving is, we assure our customers, superior to the imported seed usually offered.

	Per Trade Pkt		Per Trade Pkt.
<i>Single-striped Vittata</i>	\$0 30	<i>Double Scarlet</i>	\$0 50
“ <i>Scarlet</i>	25	“ <i>White</i>	50
“ <i>White</i>	25	“ <i>Yellow</i>	50
“ <i>Yellow</i>	25	“ <i>Bronze</i>	50
“ <i>Bronze</i>	25	“ <i>Pink and Rose</i>	50
“ <i>Pink and Rose</i>	25	“ <i>Mixed</i>1-32 OZ., \$10.00.	50
“ <i>Mixed</i>1-32 OZ., \$5.00.	25		

OUR PRIZE CHRYSANTHEMUM SEED.

We are now universally considered headquarters for this grand flower, our collection taking the best prizes wherever exhibited. Instead of selling our cut-flowers, we take special pains to induce the choicest varieties to seed by artificial and other means, and have met with such success that we will have for sale a large quantity, including all types and colors, 15c. per packet, \$1.50 per dozen.

CYPRIPEDIUM.

The many calls and inquiries for Orchid seed induced us to save and offer this year in our Spring Catalogue, artificially Hybridized Cypripedium Seed.

We have been successful in raising many new and very valuable varieties from seed ourselves, and believe, from the increasing interest taken in this class of plants, that the seed will meet with a ready sale. 30c. per packet, \$3.00 per dozen. On each packet will appear the Cross of Hybridization.

THE COMET WHITE ASTER.

This is a lovely new Aster, being sent out for the first time. It is a French novelty and the flowers resemble a Japanese Chrysanthemum; the petals are long, pure-white, and arranged in a way entirely distinct from most asters. Per pkt., 25 cts.

NEW ROSE COLOR AND WHITE “BALL” ASTER.

This novelty bears very double flowers, with very symmetrically incurving petals, making the flower almost exactly spherical. They are rose color and white, and very distinct among Asters, deserving general cultivation. Per pkt., 15 cts.

CARDINAL POPPY.

This is a variety of *Papaver somniferum* and is distinguished from the type by its dwarfer habit of growth and the size and brilliant color of its flowers. These are immense, very double, brilliant scarlet on a white ground, and are borne 10 to 12 on a plant 18 inches high, lasting for a long time in perfection. A grand annual Poppy which we predict will prove a decided acquisition. Per pkt., 15 cts.

NEW GLOXINIA "CORONA."

This grand flower is remarkable for its size and striking colors. The individual blossoms are 3 to 4½ inches across, with 6, and often 7, divisions or lobes, and a large, richly veined throat of deep violet-red, passing into a beautiful indigo towards the orifice. This color gradually disappears and the pure-white outer ground is margined with innumerable dark-blue dots. Another strong point in its favor is that it nearly always comes true from seed. Per pkt., 30 cts.

NEW HYBRID IMPATIENS SULTANI (BALSAMS).

These new hybrid balsams are offered this year for the first time, and will, we believe, find favor with all flower-lovers. The plant is of an erect free-growing habit and the flowers are borne in great profusion until frost. They are of varying shades from bright-red to delicate pale-pink. They are very superior to the ordinary Sultani Balsams and are a great acquisition. Per pkt., 20 cts.

IMPATIENS SULTANI (BALSAM), "KING ALBERT."

This is one of the varieties described above, of a beautiful shade of rosy crimson, and produced in great profusion. Per pkt., 20 cts.

SCHIZANTHUS PINNATUS NIVEUS.

For the first time a pure-white Schizanthus is offered. It is true that white flowers have been produced by *Schizanthus pinnatus albus* and *Schizanthus grandiflorus albus*, but the former are spotted with blue and the latter with yellow. We are confident that this will find favor and prove a valuable addition. Per pkt., 15 cts.

PAPAVER GLAUCUM (TULIP POPPY).

A magnificent new Poppy recently discovered in the mountains of Armenia. The plant rises to a height of 12 to 14 inches and produces above the bluish-green foliage a profusion (often 50 to 60) of large and splendid flowers of the most brilliant and vivid scarlet imaginable. The two outer petals bear a resemblance to a saucer, in which the two inner petals stand nearly upright and as if protecting the stamens. As the flowers fade, two black spots are visible at the base of the petals. The color reminds one of the bright scarlet of the Scarlet Duc van Thol Tulip, and on this account the variety has been named the Tulip Poppy.

This will prove to be one of the very best decorative annuals, its dazzling-red flowers, produced in such profusion, forming a brilliant mass not to be excelled, and serving to brighten up other plants with flowers or foliage of a more somber color. The minute seed will sometimes remain for two weeks before germinating, but if planted in a hot-bed it will germinate in about eight days. Per pkt., 20 cts.



PYRETHRUM ULIGINOSUM.

For Seed, see Page 21.



PTERIS VICTORIAE (NEW FERN.)

See Page 38.

CHOICE FLOWER SEEDS IN BULK.

For Florists' and Dealers' Use.

The following list of Flower Seeds will be found to contain the chief kinds most in demand by Florists and Dealers. A more complete list is furnished in our retail catalogue.

On all orders for packets taken from our retail catalogue, for varieties therein quoted, we will allow a discount of $33\frac{1}{3}$ per cent. When kinds are wanted in bulk we will furnish at advertised rates. When prices are quoted at 20, 25 and 50 cents per ounce, not less than half an ounce will be sold; for varieties quoted at 75 cents and \$1.00 per oz., we will furnish quarter ounces, \$1.50 and above, per ounce, $\frac{1}{8}$ of an ounce will be sold at prices quoted; $\frac{1}{4}$ pound at pound rates.

	Per lb.	Per oz.	Trade pkt.
ACHILLEA ptarmica plena. White flowers.....			\$0 25
ACROCLINIUM. Mixed.....	\$1 50	\$0 25	05
ALYSSUM—			
maritimum (Sweet Alyssum).....	1 25	20	05
“ compactum. Very dwarf, pure white.....	2 00	25	05
saxatile. Perennial Alyssum, yellow.....	1 25	20	05
“ compactum. Very dwarf.....	2 50	30	05
AMPELOPSIS—			
Veitchi (Boston Ivy).....	3 00	30	10
Royali.....		50	10
ANTIRRHINUM—			
(Snapdragon) magus. Mixed.....	2 25	25	05
Tom Thumb, mixed.....	6 00	50	10
ASTER—			
Dwarf Pyramidal Bouquet. White, Rose, Purple, Blue. Separate colors.each		2 00	10
“ “ “ Mixed colors.....		1 25	10
“ Chrysanthemum-Flowered. Rose, White, Light Blue, Fiery Scarlet. Separate colors.....each		1 50	10
“ “ “ Mixed colors.....		1 25	10
Mignon. Pure White. Acknowledged to be the best variety of white Aster for cutting.....		3 00	25
Princess. Pure White or Snowball. Somewhat of the Mignon type, resembling a white Pomponne Dahlia; very long bloomer; excellent for Florists.....			50
Queen of the Market. Three weeks earlier than any other Aster. White, Rose, Crimson, Light Blue and Dark Blue... ..		1 50	25
Quilled German Double (China). Mixed.....	4 50	30	10
Truffaut's Pæony-Flowered Perfection. White, Rose, Scarlet, Light Blue, Dark Blue. Separate colors.....each		1 50	10
“ “ “ “ Mixed colors.....		1 25	10
Collections of all above kinds in 12 separate colors.....\$0 75			
“ “ “ “ “ 6 “ “			50
AURICULA. Choicest English. Mixed.....		6 00	25
AQUILEGIA—			
(Columbine). Single mixed.....	2 00	20	05
“ Double “.....	2 00	20	05
Canadensis.		50	10
BEGONIA. Tuberous rooted—See Novelties.			
Rex. Ornamental leaved.....200 seeds, 50 cents.			
Semperflorens rosea.1-32 oz., 50 “ ..			20
“ alba.....1-32 oz., 50 “ ..			20
BALSAM—			
Double White (Camellia Flowered). Our strain of this most useful florist's flower is unsurpassed.....		2 00	25
Rose Flowered, mixed.....		50	10
Camellia Flowered, choice mixed.....		50	10

FLOWER SEEDS—Continued.

	Per lb.	Per oz.	Trade Pkt.
BELLIS—			
perennis. Fine mixed.....		\$2 00	\$0 10
“ fl. pl. Snowball. Flowers very large and double, excellent for bouquets.....per 1-16 oz., \$1 00.			50
perennis. Unsurpassed, fine mixed.....		4 00	20
Longfellow. Similar in form and habit to Snowball, but of a fine dark rose color.....		5 00	25
BROWALLIA—			
elata. Blue.....		50	10
“ Alba.....		50	10
Grandiflora Coarulea. Blue.....		60	10
Nana. Dwarf, blue, for pots.....		50	10
CALCEOLARIA—			
hybrida grandiflora. Self-colored varieties.....1-16 oz., \$2 50.			50
Pumila compacta. Dwarf Tigered.....1-32 oz., \$2 50.			50
rugosa. Shrubby or bedding.....500 seeds, 50 cts.			
CALENDULA. Prince of Orange, golden yellow.....	1 00	20	5
CALLA aethiopica.....	3 00	25	5
CALLIOPSIS. (Coreopsis).			
Drummond.....	1 00	20	5
Lanceolata. Own saving.....		75	10
Choice mixed.....	1 00	25	5
CANDYTUFT—			
Iberis. Dwarf white. Tom Thumb.....		25	5
“ affinis. Empress. Very large trusses of pure white flowers.....	4 00	30	5
“ amara. Ordinary white.....		50	10
“ sempervirens. Very fine white.....		50	10
“ Splendid mixed.....	1 00	10	
“ Carmine, flesh, lilac and crimson.....each	1 50	20	5
CANNA—			
Mixed, extra choice.....		15	5
Crozy's finest mixed.....		60	10
CARNATION—			
Double, finest mixed.....		4 00	50
“ fine mixed, excellent for borders.....		1 50	25
“ Red Grenadin, choice, extra double.....		4 50	50
Double Marguerite. This new class has justified the highest expectations. Seedlings begin blooming the fourth month from time of germinating; they supply the florist or gardener with large and very sweetly scented flowers when other carnations are over. Eighty per cent. are double and produce a rich display of colors. With the aid of this class the florist can have carnations all the year round. Those who used it last year are high in its praise.....1-16 oz., 50 cts.			
CENTAUREA—			
candidissima.....1000 seeds, 50 cts.			
gymnocarpa.....“ 25 cts.			50
Clementei.....“ 50 cts.			75
cyanus minor, (Corn Flower or Blue Bottle).....	75	10	
CHRYSANTHEMUMS. (See Novelties).			
Double Japanese and Chinese saved from our prize specimens only.....			
.....15c. per pkt.; \$1 50 doz. packets..			
multicaule. Yellow, annual chrysanthemum.....		25	5
“ inodorom flore plena. Double white.....		1 00	10
“ tricolor Burridgeanum.....	1 50	25	5
“ segetum grandiflorum. (Yellow Paris Daisy).....		50	10
“ frutescens “ (White Paris Daisy).....		75	10
CINERARIA—			
hybrida. Choicest mixed.....1000 seeds, 75c.; 1-4 oz., \$10 00.			
grandiflora. Large prize varieties, splendid mix.....100 seeds, \$1 25.			
CLEMATIS. Large flowering hybrids, own saving.....			25
COBÆA scandens. Blue.....	4 00	50	10



CELOGYNE CRISTATA.

See Page 54.



LELIA ANCEPS.

See Page 54.

FLOWER SEEDS—Continued.

	Perib.	Per oz.	Trade Pkt.
COCKSCOMB (Celosia).—			
Plumosa Aurea. Yellow feathered.....	per 1-16 oz.	50c.	
“ “ Scarlet feathered.....	“	50c.	
Gaslow Prize, crimson and yellow, very choice strain.....		1 00	10
CONVOLVULUS—			
Major. Mixed.....	40	10	
Minor. (Dwarf Morning Glory), mixed.....	40	10	
“ tricolor. Blue, white, and violet, each.....	40	10	
COSMOS			
Hybridus. Choicest mixed.....	6 00	50	10
“ Pure white.....	7 00	75	10
CYCLAMEN—			
persicum giganteum album. White...100 seeds, \$1 25; 1000 seeds, \$10.			
“ “ atrorubrum. Dark red. 100 seeds \$1 25.			
“ “ 1000 “ \$10 00.			
“ “ roseum. Bright red. 100 seeds, \$1 00; 1000 seeds, \$8.			
“ “ Mixed.....100 seeds, \$1 00; 1000 seeds, \$8.			
DAHLIA—			
Large double flowering, finest mixed.....		2 00	10
Double pompone mixed.....		4 00	25
Single, choicest colors, mixed, own saving.....		1 50	20
DELPHINIUM—			
Cardinale.....		1 00	10
formosum. The seed we offer of this grand perennial is our own saving..	3 00	30	10
DIANTHUS—			
Barbatus. (Sweet William). Choice strain of our own saving.....	1 00	10	
Chinensis. (Chinese Double Pink).....		25	
Heddewigii. Finest Varieties, Mixed.....		60	10
DODECATHEON Clevelandii.....		2 00	15
ERYTHRINA Christi Galli.....		1 00	10
ESCHSCHOLTZIA. (California Poppy) mixed.....	1 25	20	5
FUCHSIA—			
Single and double in choicest mixtures.....			50
procumbens.....			50
GERANIUM—			
zonale. Choice mixed.....		1 25	25
Apple scented.....100 seeds, 50c.			
GLOXINIA. Choice mixed. Our own saving, choice strain.....			
			\$0 50
GREVILLEA robusta.....			
		\$1 00	10
GYPSOPHILA—			
muralis.....		30	05
paniculata.....		25	05
HELIOTROPE. Fine mixed.....			
		1 25	20
HOLLYHOCK—			
Choicest double strain. Crimson, yellow, whit3, magenta; separate colors, each.		1 00	20
Fine mixed. Double.....		1 00	20
LANTANA. Fine mixed.....			
		25	05
LINARIA cymbalaria. Kenilworth Ivy.....			
		2 00	20
LINUM grandiflorum. Scarlet flax.....			
			15
LOBELIA—			
Crystal Palace compacta. (True.) Best for pot culture.....		4 00	25
Cardinalis. Scarlet.....		1 00	10
LYCHNIS. Choice mixed.....			
		20	05
MARIGOLD—			
Dwarf French.....	1 50	25	10
African.....	1 50	25	10
MAURANDIA—			
rosea. (Pink.).....		2 50	25
alba. (White).....			25
Choice mixed.....		2 00	25

FLOWER SEEDS—Continued.

	Per lb.	Per oz.	Trade pkt.
MIGNONETTE—			
Large flowering.....	50	10	
Grandiflora aurea. Golden Queen.....	3 00	30	05
“ “ Crimson Queen.....	3 00	30	05
Machet	7 00	75	15
pumila erecta		75	15
Miles' Spiral. Best for cut flowers.....	2 00	25	05
MIMULUS—			
hybridus. Choice mixed.....		2 00	25
(Moschatus). Musk Plant.....		3 00	25
MINA LOBATA		2 00	10
MYOSOTIS—			
dissitiflora. (Forget Me Not). Blue. Useful for florists.....		4 00	50
semperflorens. Especially useful for cut flowers. Blooms all year round. Own saving.....		2 00	25
NASTURTIUM—			
Dwarf or Tom Thumb. Scarlet.....	75	20	
“ Empress of India. The very best variety for florists; flowers bright crimson, bluish-green foliage.....	2 00	20	
Tom Thumb King Theodore. Black red.....	1 50	20	
“ “ Lady Bird. Orange, red spots.....	2 25	30	
“ “ Yellow.....	1 50	20	
“ “ Mixed.....	60	15	
Tall or climbing crimson.....	50	10	
“ Orange yellow.....	50	10	
“ Striped.....	50	10	
“ Purple, violet.....	50	10	
“ Mixed.....	50	10	
NEMOPHILA. Fine mixed.....	50	10	
PANSY—			
Very fine mixed.....	6 00	60	15
Extra fine large, mixed.....	10 00	75	25
Extra choice unsurpassed mixture; the finest.....		5 00	50
Giant Trimardeau. Mixed.....	2 50	50	
Snow Queen. White.....	1 00	25	
Emperor William. Blue.....		75	25
Faust. Black.....		75	25
Odier. Blotched.....	4 00	50	
Prince Bismark. Bronze.....	1 00	25	
Gem. Yellow.....	1 00	25	
Striata perfecta. Striped.....		75	25
Victoria. Red.....	7 00	50	
Lord Beaconsfield. Violet.....	1 00	25	
PEAS, Sweet.			
Mixed.....	75	10	
Princess of Wales	1 00	10	
Vesuvius	1 00	10	
Butterfly	1 00	10	
Dark Purple.....	75	10	
Tricolor.....	75	10	
Dark Red.....	75	10	
Invincible Scarlet.....	75	10	
Light Blue.....	75	10	
Painted Lady	75	10	
Everlasting		40	
California (<i>Lathyrus splendens</i>).....	1 50	20	
PETUNIA—			
hybrida. Very fine mixed.....	6 00	50	10
“ Starred and Striped.....	12 00	1 00	25
“ Large flowering single; superb strain mixed.....	1-16 oz., \$1		50
“ Inimitable dwarf.....		5 00	50
“ Grandiflora fimbriata flora plena. Fine mixed.....			
per pkt. 200 seeds, 50 cents.			

FLOWER SEEDS—Continued.

	Per lb.	Per oz.	Trade pkt.
PORTULACA Grandiflora.			
Fine Mixed.....	\$2 50	\$0 25	\$0 10
Alba. White.....	3 00	30	10
Aurantica.....	3 00	30	10
Caryophylloides.....	3 00	30	10
Rosea.....	3 00	30	10
Splendens.....	3 00	30	10
Thorburni.....	3 00	30	10
Bedmanii.....	3 00	30	10
Double mixed, best.....		5 00	50
PHLOX Drummondii Grandiflora—			
White.....		60	25
William I., striped.....		60	25
Scarlet.....		60	25
Dark Red with White Eye.....		75	25
Yellow.....		75	25
Grandiflora Splendens. Mixed.....	8 00	50	10
Drummondii—			
White.....		50	10
Striped (Striata Rosea).....		50	10
Scarlet.....		50	10
Dark Red (Atropurpurpea).....		50	10
Yellow.....		50	10
Mixed.....	3 50	30	10
Nana compacta nivea Snowball.....		3 00	25
“ “ Fireball.....		3 00	25
“ “ Mixed. The best for pot culture.....		3 00	25
Star of Quenlinburg, Cuspidata. Mixed.....		1 25	25
PRIMULA—			
sinensis fimbriata. Choicest mixed.....	1-64 oz., \$0 75..		50
“ “ alba. White.....	1-64 oz., \$1 00..		50
“ “ rubra. Red.....	1-64 oz., \$0 75..		50
“ “ coerulea. Blue.....			50
“ “ coccinea. Scarlet.....	1-64 oz., \$1 00..		50
“ “ globosa rubra.....			50
“ “ globosa alba.....			50
“ “ kermesina splendens.....	1-32 oz., \$1 50		25
Japonica. Mixed.....		2 75	25
obconica. White flowers. Very useful for pots and bouquets. 1-64 oz., \$1.			50
vulgaris (English Primrose).....		1 00	25
PYRETHRUM—			
aureum (Golden Feather).....		65	10
“ (Golden Gem). Double Flowering.....		65	10
ROMNEYA Coulteri.....	10 00	1 00	10
SCHIMUS Molle.....	75	10	
SMILAX.....	6 00	50	
STOCK—			
Double Ten-Weeks, Large-flowering Dwarf. White, Scarlet, Blue, Sulphur yellow. Separate colors.....	each..	3 00	25
Mixed. Extra Choice Double.....		2 60	25
“ Good Quality German.....	10 00	1 00	10
Emperor, Large Flowering. White or Crimson.....		8 00	25
Perfection. White, Yellow or Crimson.....		5 00	25
Wall-flower Leaved. Choicest mixed.....		5 00	25
Brompton or Winter. Crimson.....		50	10
“ White.....		2 00	20
“ Mixed.....		1 00	10
Dwarf Bouquet Winter. Crimson.....		5 00	25
“ White.....		5 00	25
“ Mixed.....		4 50	25

FLOWER SEEDS—Continued.

	Per lb.	Per oz.	Trade Pkt.
TASCONIA Buchenani.....		\$0 75	\$0 10
TORENIA Fournieri. Charming plant for pot culture: velvety blue flowers..		5 00	25
VERBENA—			
New Mammoth.....		4 00	25
Hybrida. Scarlet.....		1 00	25
“ Striped.....		1 00	25
“ Blue with white eye.....		1 00	25
ZINNIA—			
elegans. Double mixed.....			50 10
“ Single mixed.....			25 10

Hardy Perennial Seed.

OF OUR OWN SAVING.

Growing, as we do, many acres of these most useful and pretty plants, for which there is a steadily increasing demand, assisted by a favorable season, we have saved a quantity of seed of the most important kinds, and offer below a list at prices which will compare favorably with those of the European growers; but when taken into consideration the certainty of germination and extra care with which they are saved, they should receive the preference.

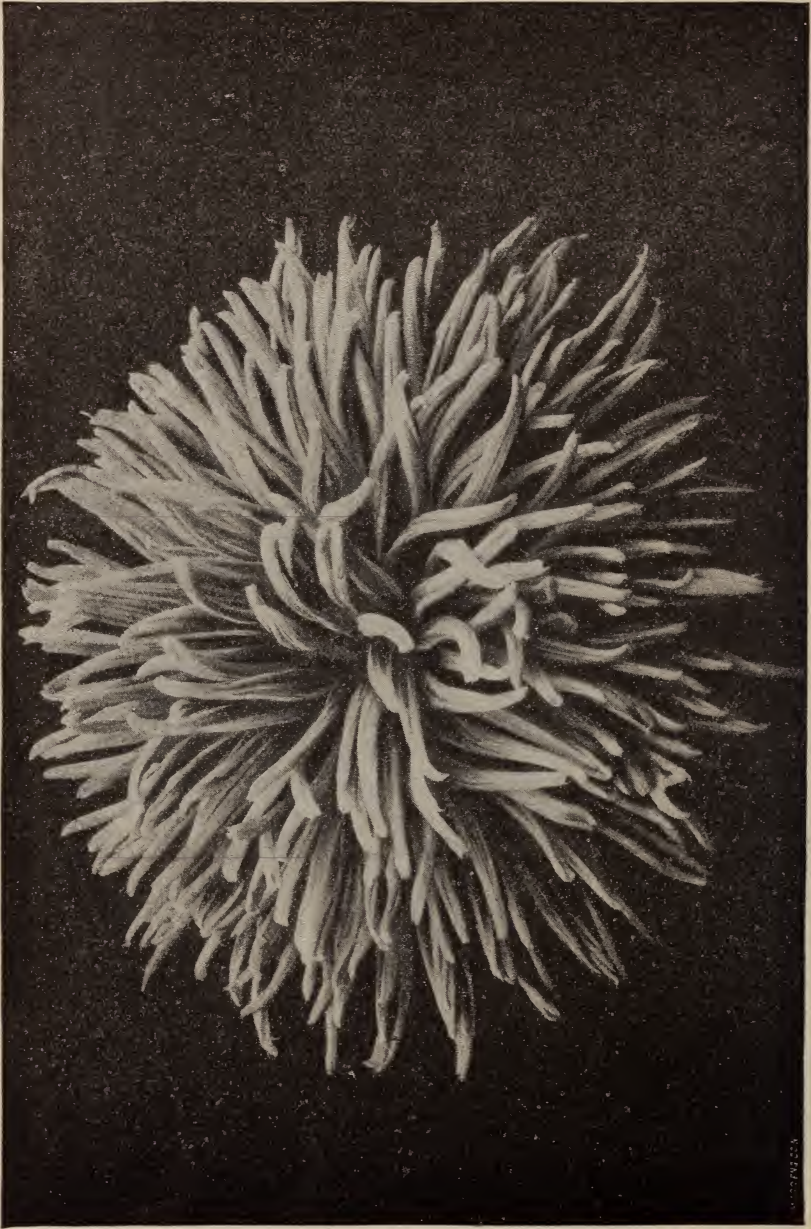
Hardy Perennial Seeds.

	1-8 Oz.	1 Oz.		1-8 Oz.	1 Oz.
Achillea tomentosa. Dwarf yellow..	\$0 75	\$5 00	Aster—		
Aconitum anthora. Yellow.....	25		multiflorus.....	\$0 25	
Agrostemma—			Shortii.....	25	
coronaria.....		25	Henryii.....	25	
“ alba.....	50		Drummondii.....	25	
Anemone—			surculosus.....	25	
patens Nuttalliana.....	50		aestivus.....	25	
Pennsylvanica.....		75	longifolius.....	25	
sylvestris.....	25		white.....	25	
Aquilegia—			wild.....	25	
Canadensis.....		75	Astragalus Canadensis.....	25	
flabellata.....	25		Aubrietia—		
vulgaris alba.....		25	Eyrei.....	25	
Mixed.....		10	Graeca.....	25	
Arabis alba.....		25	Baptisia laucantha. Yellow.....	50	
Aristolochia elegans.....	1 00	7 00	Boltonia asteroides.....	25	
Asclepias—			Callirhoe involucreta.....		50
tuberosa (Rubbed Seed).....	25	1 00	Campanula—		
Incarnata (Rubbed Seed).....	25	1 00	Carpatica.....		25
Aster—			“ alba.....		50
Novae Belgii.....	25		“ Light blue.....		50
Novae Angliae.....	25		celtidifolia.....	25	
Ptaromicoides (Rubbed Seed)...	25		latifolia. Blue.....		1 00
Sibericus.....	25		macrantha.....		50
Douglasii.....	25		Persicifolia.....	30	
prenanthoides.....	25		Punctata.....	25	
laevigatus.....	25		Chelone nemorosa.....	50	
cordifolius.....	25		Chionodoxa—		
niveum.....	25		gigantea.....	50	
spectabilis.....	25		Lucillea.....	50	
puniceus.....	25		Sardinensis.....	50	
Lindleyana.....	25		Clematis alpina. Erect white.....	25	
laevis.....	25		Corchoropsis crenata.....	25	
diffusus.....	25		Dahlia. Single (Own grand strain).	25	



New Chrysanthemum—MRS. HERBERT LEON.

See Page 41.



New Chrysanthemum.—Col., H. M. BOIES.

See Page 41.

HARDY PERENNIAL SEED—Continued.

	1.8 Oz.	1 Oz.
Delphinium hybridum. Mixed. Single and double.....		\$0 25
Dianthus—		
barbatus.....		10
hispanicus. Dark red, large flower.....	50	
deltoides.....		20
Dictamnus—		
Fraxinella.....		50
" alba.....		75
Digitalis—		
gloxinioides. Mixed.....		10
" alba.....		10
" purpurea.....		10
" rosea.....		25
Erigeron—		
aurantiacus.....	25	
pulchellus.....	25	
glaucus.....	25	1 00
Eryngium amethystinum		25
Erysimum pulchellum		10
Eupatorium species, White	25	
Funkia—		
lanceolata.....	25	
cordata.....	50	
Gentiana Andrewsii	50	
Geranium maculatum	25	
Geum—		
Japonicum.....	25	
rivale.....	25	
Grindellia hirsuta	25	
Gypsophila repens	25	
Helenium autumnale	50	
Helianthus—		
atro-rubens.....	25	
divaricatus.....	25	
hirsutus.....	25	
giganteus.....	25	
Hemerocallis—		
flava.....	25	
graminea.....	35	
rutilans.....	35	
Thunbergii.....	35	
Hibiscus rose	25	1 00
Hollyhock, Single		25
Iris—		
Kaempferii.....	25	1 00
pseudo acorus. Yellow.....	25	1 50
Siberica.....	25	
" sanguinea.....	25	25
Lathyrus niger . Very dark purple.....	25	
Lepachys pinnata . Drooping, very pretty, yellow, black centre....		50
Liatrix spicata	15	75
Lilium—		
Carnolicum.....	50	
Martagon.....	50	50
Pyrenaicum.....	50	
Szovitzianum.....	50	
Linum—		
perenne.....		10
Austriacum.....	25	

	1.8 Oz.	1 Oz.
Lychnis—		
alpina.....		\$1 00
chalconica.....		10
Japonica.....	25	
viscaria splendens.....		25
Malva moschata		30
Muosotis—		
elegantissima.....	25	
palustris semperflorens.....		1 00
Papaver—		
annual (Shirley Poppy).....		50
bracteatum.....		50
involutratum maximum.....		20
nudicaule. Mixed.....		1 00
orientale.....		1 50
Pentstemon—		
barbatus torreyii.....	25	
digitalis.....		25
pubescens.....		25
Phlox paniculata		1 25
Physostegia virginiana		50
Polemonium coeruleum		10
Potentilla fruticosa	25	
Poterium canadense	25	
Pycnanthemum lanceolata	25	
Pyrethrum—		
lacustre.....	25	
cinerariaefolium.....	25	
uliginosum. The giant white daisy.....	75	5 00
Reseda glauca . White perennial..	25	
Rheum palmatum		25
Rudbeckia—		
laciniata.....		25
speciosa.....		75
Ruellia ciliosa	25	
Salvia pratensis . Hardy blue....	25	
Sanguinaria Canadensis	25	
Scutellaria scordifolia	50	
Silphium perfoliatum		50
Solidago—		
Canadensis. (Golden Rod or American National flower)...	50	
lanceolata.....	50	
Drummondii.....	50	
occidentalis.....	50	
Odora.....	50	
juncea.....	50	
neglecta.....	50	
serotina.....	50	
rigida. The best of the Solidagos, being dwarf in habit and much larger flowers.....		1 00
rigida. (Rubbed Seed).....		2 00
Tunica Saxifraga		25
Verbascum—		
thapsus.....	25	
niger.....	25	
Veronica—		
spicata.....	25	
virginica.....	25	

BULBS

—FOR—

SPRING PLANTING AND SUMMER BLOOMING.

	Each.	Per doz.	Per 100	Per 1000
AGAPANTHUS Umbellatus. (African Lily or Love Flower).....		\$1 75		
AMARYLLIS—				
Atamasco (<i>Zephyranthus Atamasco</i>). (Flower of the West Wind)...			\$ 2 00	\$15 00
Aulica (<i>Hippeastrum aulicum</i>). (Lily of the Palace), winter bloomer...	\$1 25			
Belladonna Major (Belladonna Lily). Autumn blooming species.....	25	2 00		
Cinnamonea (<i>Crinum riparium</i>). Splendid rose color.....	5 00			
Formosissima (<i>Sprekelia formosissima</i>). (Jacobean Lily), good for forcing.....	15	1 50		
Gigantea (<i>Brunsvigia Josephinea</i>). Beautiful and rare species.....	5 00			
Johnsonii (<i>Hippeastrum Johnsonii</i>). Crimson, striped white.....	75	6 00		
Ornatus. Grand hybrid; white flower, striped with rose.....	7 00			
Reginæ (Mexican Lily). Dark red, with orange and white.....		3 00	24 00	
Rosea (<i>Zyphranthes rosea</i>). Free bloomer.....		50	4 00	
Purpurea (<i>Vallotta purpurea</i>). (Scarborough Lily), bright scarlet...		3 00		
Sarniensis (<i>Nerine Sarniensis</i>).....		1 60	12 00	
AMORPHOPHALLUS—				
Campanulatus.....	1 25			
Giganteus.....	1 00			
Rivieri. (Snake Palm or Umbrella Arum).....	25			
ANEMONE—				
Coronaria or Hortensis Varieties. Single, all colors, mixed.....			60	
Double, all colors, mixed.....			1 00	
BEGONIAS, Tuberos Routed. See Flowering and Foliage Plants...				
CALADIUM Esculentum (Elephant's Ear). A great favorite.....				
			\$5 00, \$8 00, and \$12 00	per 100.
CALLA LILIES—				
White Calla (<i>Richardia Aethiopica</i>). (White Trumpet Lily or Lily of the Nile). Dry roots, ready August.....		1 75	10 00	
Spotted Calla, (<i>Richardia albo-maculata</i>). Dormant tubers.....		65	5 00	
Yellow Calla, (<i>Richardia hastata</i>).....	1 00	11 00		
Black Calla, (<i>Arum sanctum</i>). Recently introduced.....	60	7 00	50 00	
CONVALLARIA. See Lily of the Valley.				
CRINUM Americanum. Fragrant white flowers.....	25	2 50		
CYCLAMEN—				
Europæum roseum. Bright red, fragrant, hardy.....		1 30	10 00	
“ album. Pure white, “ “.....		1 30	10 00	
Persicum. Flowers largest of the genus.....		1 60	12 00	
CYCLOBOTHRA Flava (Golden Shell). Mexican variety.....		50	3 00	
EUCHARIS Amazonica (Lily of the Amazon). Greenhouse bulb....		2 50		
FREESIA Refracta alba. Write us for price for July and August delivery.				

GLADIOLUS.

All colors, mixed.....	\$1 25	\$10 00
Our extra fine American hybrids.....	2 00	15 00
White and light. Extra choice for florists.....	3 75	35 00
“ “ Choice mixture of seedlings and named varieties.....	2 25	20 00
Light colors. No red or dark colors.....	1 75	15 00



New Chrysanthemum—DR. H. A. MANDERVILLE.

See Page 41.



New Chrysanthemum—MRS. W. S. KIMBALL. See Page 41.

BULBS—Continued.

	Each	Per doz.	Per 100	Per 1000
Various shades of Pink.....			\$1 75	\$15 00
“ “ Red. No Brenchleyensis.....			1 75	15 00
“ “ “ Brenchleyensis.....			1 00	8 00
“ “ Yellow.....			2 50	20 00
“ “ Scarlet and Pink, white throats.....			3 50	30 00
Lemoine's extra fine mixed.....			5 00	
“ Fine mixed varieties.....			3 00	

GLOXINIA. French hybrids.....	10	1 00	7 00	
HEMORCALLIS. See Herbaceous Plants.				
HYACINTHUS Candicans. (Cape Hyacinth). Flowers creamy white in a raceme.....		30	2 00	16 00
IRIS. See Herbaceous Plants.				

LILIES.

	Each	Per Doz.	Per 100	Per 1000
Auratum. (Golden Banded Lily of Japan), 9 to 11 inches.....			\$10 00	\$95 00
“ “ 11 to 13 “.....			12 00	100 00
“ vittatum rubrum. Magnificent flowers, cream white.....	50	4 00	32 00	
“ pictum. Red blotched.....	50	5 00	40 00	
“ macranthum. A grand variety of Auratum.....	50	5 00	40 00	
“ virginale alba. White with yellow stripe on each petal....	50	5 00	40 00	
“ Wittei. Pure white with broad yellow band.....	75	7 50	60 00	
Batemanni. Three or four feet high, flowers apricot color.....	10	1 00	8 00	
Brownii (<i>Japonicum odorum</i>). Yellow and purple, very fine.....	65	6 50	52 50	
Canadense (Canadian Lily). Yellow varying to pale red, spotted with reddish purple.....	10	80	6 00	
Candidum (Annunciation Lily, St. Joseph's Lily). The well-known white Lily of the gardens.....	5	50	3 00	25 00
“ maximum plenum. Fine double white.....	10	90	7 00	
Elegans, Alice Wilson. New variety.....	80	8 00		
“ Incomparable. Fine new variety, large flowers.....	15	1 25	10 00	
“ atropurpureum. Scarlet with black spots.....	15	1 25	10 00	
“ Mixed varieties.....	10	90	6 50	
Hansonii (True Japanese Yellow Martagon).....	80	8 00		
Harrisii (Bermuda Easter Lily). Write for our prices and sizes for delivery in July and August.				
Humboldtii. Reddish orange.....	20	2 00	15 00	
Krameri. Flowers large, pale rose color.....	12	1 10	9 00	
Longiflorum. Similar to Harrisii but makes a better pot plant. Prices upon application.				
“ foliis albis marginatis. Variegated leaves.....	60	6 00	45 00	
Leichtlinii. Flowers bright yellow spotted with purple.....	35	3 25	25 00	
Martagon. Flowers purplish red with numerous spots of dark purple....	15	1 50	11 00	
Maritimum. A dwarf grower, flowers blood red.....	15	1 50	11 00	
Maximowiczii. Bright scarlet, spotted with purple.....	25	2 50	20 00	
Medeoloides. Orange red, with a few purple spots.....	30	3 00	22 50	
Parryii. Lemon yellow, spotted with brown.....	50	4 50		
Pyrenaicum. Small, bright yellow; the petals much incurving.....	15	1 75		
Sarana Kamschaticum (Black Lily).....	30	3 00	24 00	
Speciosum album (<i>Lancifolium album</i>) purest white.....	20	1 50	12 00	
“ rubrum. White, shaded with deep rose, and spotted with red.	20	1 50	12 00	
Superbum. Orange, spotted with red.....	10	75	5 00	
Szovitzianum (<i>Monadelphum, colchicum</i>). Pale bright yellow.....	45	4 50	30 00	
Testaceum (<i>excelsum, Isabellum</i>). Yellow tinged with dull red.....	50	5 00	35 00	
Tigrinum (Common Tiger Lily). Orange red, spotted with black.....	5	50	3 00	
“ splendens. Much larger than type.....	10	90	7 00	
“ flore plenum. Semi-double form of Tigrinum.....	10	75	5 00	
Washingtonianum (Shasta Lily). White, tinged with purple.....	15	1 50	12 00	
“ purpureum (<i>rubescens</i>). Whitish, with purple spots..	20	2 00	15 00	

LILIES—Continued.

	Each	Per doz.	Per 100	Per 1000
LILY OF THE VALLEY (<i>Convallaria majalis</i>). Almost at any time of the year we can furnish strong, three-year-old Berlin pips in large or small quantities from cold storage.....				\$10 00
MADERIA Vine. The old favorite "Climbing Mignonette".....		\$0 30	\$2 50	
MILLA Biflora. (Mexican Star Flower). Fine for forcing.....		50	3 50	
OXALIS, summer flowering. <i>Rosea</i>		10	50	
PAEONIA. See Herbaceous Plants.				
PANCRATIUM—				
<i>Calathinum.</i> Large flowers, for pot culture.....		2 00	15 00	
<i>Illyricum.</i> Flowers white, fragrant.....		3 50	25 00	
<i>Maritinum.</i> (Sea Daffodil). Taller than preceding.....		2 00	15 00	
RANUNCULUS,				
<i>Double Persian.</i> Rose-shaped flowers. All colors mixed.....			50	4 00
<i>Double French.</i> Larger flowers. All colors mixed.....			30	2 50
<i>Turban Varieties.</i> Double mixed.....			50	4 00
SCHIZOSTYLIS Coccinea (Kaffir Lily). Greenhouse plant.....		20	1 50	
TIGRIDIA—				
<i>Conchiflora.</i> Dark yellow.....		40	2 50	
<i>Grandiflora alba.</i> Flowers large, pearly white.....		50	3 00	
<i>Pavonia</i> (Peacock Tiger Flower).....		40	2 50	
TRITOMA Uvaria Grandiflora (Red-hot Poker Plant).....		75	5 00	
TUBEROSES. Selected double Pearl.....		20	1 25	12 00

DON'T

Place your Order Before Receiving Our Prices on

BERMUDA EASTER LILY BULBS,
 LILIUM LONGIFLORUM BULBS,
 ROMAN HYACINTH BULBS,
 DUTCH HYACINTH BULBS,
 FORCING TULIP BULBS,
 PAPER WHITE NARCISSUS BULBS,
 VON SION NARCISSUS BULBS
 LARGE FREESIAS, DOUBLE EXTRA SIZE BULBS.
 LILY OF THE VALLEY PIPS,
 CALLA LILY, DRY BULBS, WHITE, YELLOW, BLACK AND SPOTTED
 CALLA LILY, DWARF DRY BULBS, NEW NOVELTY, "THE GEM."

—ALSO ALL—

FRENCH, DUTCH AND AMERICAN BULBS.

OUR EXCEPTIONAL OFFER IS

EXTRA LARGE, SELECT BULBS,
 UNEQUALLED LOW PRICES,
 SATISFACTION GUARANTEED.



New Chrysanthemum—MRS. H. A. MANDERVILLE.

See Page 41.



THE BEST OF ALL CAULIFLOWERS.

IMPROVED.
SNOW BALL
CAULIFLOWER.

PURE WHITE HEADS.

OF THIS GRAND VARIETY OUR STOCK IS UNSURPASSED.

General Wholesale List of Vegetable Seeds.

We wish to call the attention, especially of market gardeners and florists to our seeds. From personal experience we know the vital importance of purity of stock and high germination. In this department purchasers may have every confidence in the goods we offer, as every article we send out will be tested both for germination and purity. We have spared ourselves no expense in the preparation of seed testing houses and trial and experimental grounds, and have secured only skilled help, many of whom have spent a lifetime in this business.

In all cases the seeds we offer will represent the new crop of 1891, grown by reliable men under our personal supervision.

Quarter pound furnished at pound rate, ten pound at hundred pound rate, and peck or quarter bushel at bushel rate.

When seeds are to be sent by mail, eight cents per pound for seeds sold by the pound, and fifteen cents per quart for peas and beans, must be enclosed for postage.

TO TEST THE PURITY OF OUR STOCKS OF VEGETABLE SEEDS WE WILL GLADLY SEND SAMPLE PACKETS FREE UPON APPLICATION, ASKING THAT SAME WILL BE REPORTED UPON AT MATURITY.

ARTICHOKE—	Pkt.	oz.	lb.
Large Globe.....	\$0 10	\$0 25	\$3 00
	Qt.		Bus.
Jerusalem. Strong tubers..	\$0 20		\$3 00

ASPARAGUS—	Pkt.	oz.	lb.
Palmetto.....	\$0 10	\$0 20	\$0 50
Colossal.....	05	10	25

ASPARAGUS ROOTS—	100	1000
Palmetto.....	\$1 25	\$7 00
Colossal, two years old.....	75	5 00

BEANS, Dwarf or Bush—
GREEN-PODDED VARIETIES.

	Qt.	Bus.
New Bush Lima.....	\$0 40	\$9 00
Earliest Red Valentine.....	20	3 25
Extra Early Refugee.....	20	4 00
Long Yellow Six Weeks.....	20	3 50
Early Mohawk.....	20	3 50
Early China.....	20	3 25
Dwarf Horticultural.....	20	5 00
Refugee or Thousand to One.....	20	3 50
Large White Kidney.....	20	3 00
White Marrow.....	20	3 00

WAX OR YELLOW-PODDED VARIETIES.

Golden-Eyed Wax.....	15	4 50
Golden Wax, Improved.....	15	4 00
Flageolet Wax.....	15	5 50
Black Wax or Butter.....	15	4 25
Wardwell's Kidney Wax.....	20	5 00
White-Seeded Wax.....	25	5 00
Yosemite Mammoth.....	50	10 00

BEANS, Pole or Running—

Jersey Extra Early Lima.....	40	8 00
Large White Lima, Extra size.....	30	6 50
Dreer's Improved Lima.....	30	6 50
Horticultural or Speckled Cranberry	25	5 50
Scarlet Runners.....	30	6 00
White Dutch Runners.....	30	6 00
Giant Wax.....	50	
German Wax Pole.....	30	7 00
Early Golden Cluster Wax.....	40	8 00

BEET—

	Pkt.	oz.	lb.
Bastian's Blood Turnip..	\$0 05	\$0 10	\$0 25
Dewing's Improved Blood Turnip, per 100 lbs., \$20.....	05	10	25
Early Blood Turnip, per 100 lbs., \$20.....	05	10	25
Early Flat Bassano.....	05	10	25
Eclipse, per 100 lbs., \$22..	05	10	25
Egyptian Turnip, per 100 lbs., \$22.....	05	10	25
Long Smooth Blood Red...	05	10	25
Swiss Chard, Silver or Sea-Kale Beet.....	05	10	35

MANGEL-WURZEL and SUGAR BEET—

	Oz.	lb.
Champion Yellow Globe.....	\$0 05	\$0 20
Colossal Long Red.....	05	20
Golden Tankard.....	05	25
Long Yellow.....	05	25
Vilmorin's Improved White Sugar Beet.....	10	30
White Sugar Beet.....	05	25

BRUSSELS SPROUTS—

	Pkt.	oz.	lb.
Dwarf Improved.....	\$0 05	\$0 15	\$2 00
Tall French.....	05	15	2 00

CABBAGE—

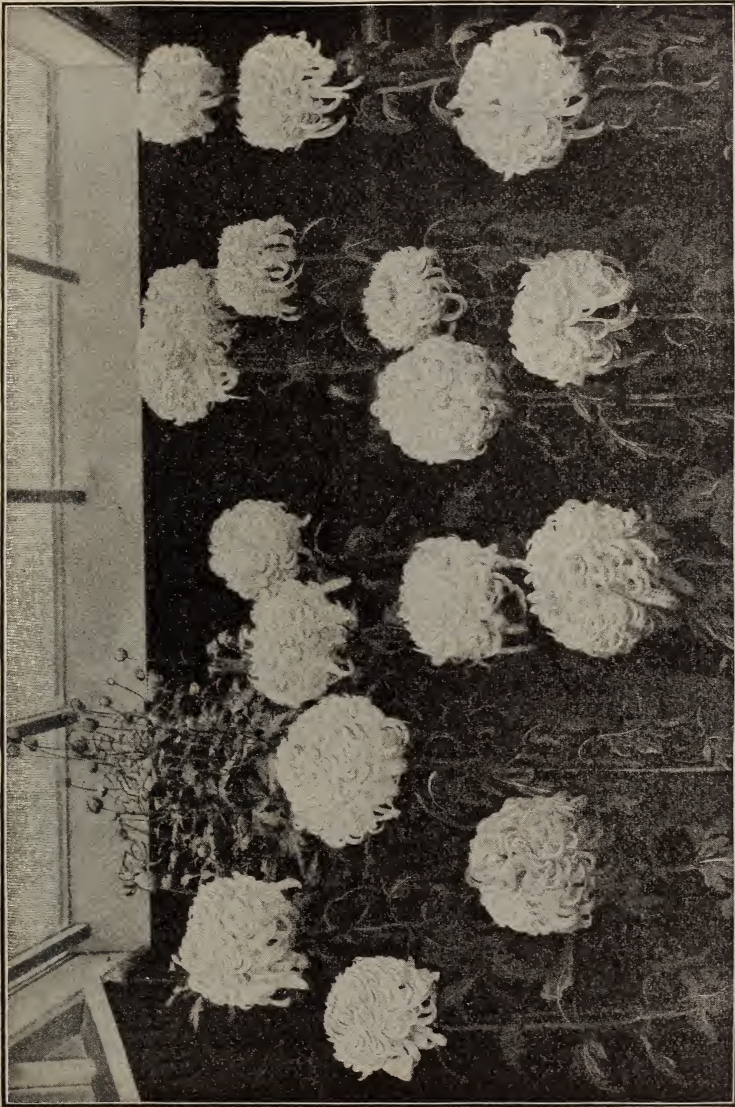
	Pkt.	oz.	lb.
Early Blood-Red Erfurt.....	05	20	2 00
Early Winnigstadt.....	10	20	1 75
Early York.....	05	15	1 50
Express.....	10	20	2 00
Fottler's Improved Brunswick.....	05	20	2 00
Henderson's Early Summer (selected Long Island grown).....	05	20	1 75
Henderson's Succession (selected Long Island grown).....	10	25	2 50
Late Flat Dutch (selected Long Island grown).....	05	20	1 50

VEGETABLE SEEDS—Continued.

	Pkt.	oz.	lb.
CABBAGE—			
Marblehead Mammoth			
Drumhead.....	\$0 05	\$0 20	\$2 00
Premium Flat Dutch.....	05	15	1 50
Red Dutch.....	05	20	1 50
Selected Early Jersey			
Wakefield.....	05	20	1 50
American Drumhead Savoy.....	05	20	1 75
CARROT—			
Altringham.....	05	10	60
Chantenay.....	05	10	60
Danvers Half Long, 100 lb., \$40.....	05	10	45
Early French Forcing.....	05	10	65
Early Scarlet Horn.....	05	10	55
Half Long Red (Nantes Stump Rooted).....	05	10	50
Improved Long Orange.....	05	10	50
Oxheart or Guerande.....	05	15	50
CAULIFLOWER—			
Early Snowball (Original stock; ask for sample free packet).....	20	3 00	30 00
Extra Early Dwarf Erfurt.....	15	2 50	20 00
Nonpareil or Half Early Paris.....	10	60	6 00
Lenormand's Short Stemmed	15	60	6 00
Algiers, Large Late.....	15	70	7 00
CELERY—			
Boston Market.....	05	20	1 50
Dwarf White.....	05	20	1 75
Giant Pascal.....	05	25	1 50
Giant White Solid.....	05	20	2 00
Golden Self-Blanching			
(Home grown).....	05	25	2 25
Golden Dwarf.....	05	20	1 00
Half Dwarf.....	05	20	1 00
New Rose.....	05	25	2 50
White Plume.....	05	25	2 00
White Curled Solid, for Soup Greens.....	15	1 25	
CELERIAC or TURNIP-ROOTED CELERY—			
Apple Shaped.....	10	20	1 00
Erfurt Giant.....	10	25	2 00
Large Smooth Prague.....	10	25	2 50
CHICORY—			
Large Rooted.....	05	10	50
CHERVIL—			
Curled.....	05	15	75
COLLARDS—			
True Georgia.....	05	10	60
CORN SALAD or FETTICUS.....			
	05	10	50
CORN, SWEET—			
	Per bus.	Per 100 ears.	
Adams' Extra Early.....	\$2 25	\$2 00	
Black Mexican.....	2 50	2 00	
Crosby's Early.....	2 00	1 50	
Early Cory.....	2 25	1 50	
Early Mammoth.....	2 00	3 00	
Early Minnesota.....	2 25	1 50	

CORN, SWEET—continued

	Per bus.	Per 100 ears.
Eight-Rowed.....	\$1 75	\$2 25
Henderson.....	2 00	2 75
Hickox.....	2 00	2 75
Late Mammoth.....	2 00	3 50
Moore's Concord.....	1 85	1 75
Old Colony.....	1 85	1 50
Narragansett.....	2 00	1 50
Ne Plus Ultra.....	2 00	3 00
Perry's Hybrid.....	2 25	2 25
Potter's Excelsior (Squantum).....	2 00	2 00
Russell's Prolific.....	2 00	1 50
Shaker's Early.....	2 00	1 50
Stowell's Evergreen.....	1 90	2 50
CRESS OR PEPPER GRASS—		
	Pkt.	oz.
Extra curled.....	\$0 05	\$0 10
Water, True.....	10	30
	lb.	\$0 25
		3 00
CUCUMBER—		
Early Cluster.....	05	10
Early Frame.....	05	10
Early Russian.....	05	10
Extra Early Green Prolific.....		
	05	10
Extra Long White Spine		
Improved Early White Spine.....	05	10
Green Prolific.....	05	10
Long Green.....	05	10
Short Green or Gherkin.....	05	10
West India Gherkin or Burr	10	20
		1 00
ENGLISH FORCING CUCUMBERS—		
	Per 100 Seeds.	
Sion House.....	\$1 00	
Rollison's Telegraph.....	1 50	
Duke of Edinboro.....	2 00	
Tender and True.....	2 50	
Lord Kenyon's Favorite.....	1 25	
DANDELION—		
	Pkt.	oz.
Common.....	\$0 05	\$0 20
Large-Leaved.....	10	30
		2 25
EGG-PLANT—		
New York Improved....	10	25
Early Long Purple.....	10	35
Black Pekin.....	10	40
		3 00
ENDIVE—		
Green Curled.....	05	15
Moss Curled.....	05	20
White Curled.....	05	15
Broad-Leaved Batavian Escarolle.....	05	20
		1 30
KALE or BORECOLE—		
Siberian, German Greens or "Sprouts".....	05	10
Dwarf Green Curled		
Scotch.....	05	10
Brown German Curled....	05	10
		1 00
KOHL-RABI—		
Early White Vienna.....	05	20
Early Purple Vienna.....	05	20
		2 50
LEEK—		
American Flag.....	05	20
Musselburgh.....	10	20
		2 00



Group of the New Chrysanthemum—Mrs. E. D. ADAMS.

See Page 41.



Chrysanthemum—“THE DAISY.”

See Page 42.

VEGETABLE SEEDS—Continued.

	Pkt.	oz.	lb.
LETTUCE—			
All-the-Year-Round	\$0 05	\$0 10	\$0 75
Big Boston. True	05	20	1 25
Black-Seeded Butter	05	15	65
Black-Seeded Simpson	05	15	60
Boston Market	05	15	60
Brown Dutch	05	15	1 00
Deacon	05	15	1 00
Drumhead or Malta	05	15	60
Early Curled Simpson	05	15	55
Hanson	05	15	55
Hardy Green Winter	05	15	60
Large White Summer (Cabbage)	05	15	60
New York. True	05	20	60
Paris White Cos	10	15	80
Salamander	05	15	60
Tennis Ball (black seeded)	05	15	70
Trianon Cos	10	75	90
Yellow-Seeded Butter	05	15	60
MELON, Musk—			
Acme or Baltimore	05	10	50
Extra Early Hackensack	05	10	75
Emerald Gem	05	10	60
Golden Netted Gem	05	10	70
Green Citron	05	10	40
Hackensack	05	10	50
Improved Christiana	05	10	40
Jenny Lind	05	10	35
Large Yellow Cantaloupe	05	10	50
Montreal Market	05	10	50
Nutmeg	05	10	40
Skillman's Netted	05	10	40
MELON, Water—			
Black Spanish	05	10	50
Cuban Queen	05	10	40
Georgia Rattlesnake or Gipsy	05	10	30
Green and Gold	05	10	35
Mammoth Ironclad	05	10	35
Ice Cream (White Seeded)	05	10	35
Kolb's Gem	05	10	30
Mountain Sprout	05	10	35
Mountain Sweet	05	10	40
Phinney's Early	05	10	40
Pride of Georgia	05	10	40
Ruby Gold	15	10	75
Citron (for preserving) Red Seed	05	10	40
MUSHROOM SPAWN—			
English			lb. \$0 10
French			30
MUSTARD—			
White London	\$0 05	\$0 15	lb.
Brown or Black	05	15	15
NASTURTIUM or INDIAN CRESS—			
Tall. Flowers Mixed Colors	Pkt. \$0 05	oz. \$0 10	lb. \$0 50
Dwarf	05	15	75
OKRA, or GUMBO—			
White Velvet	05	10	50
Dwarf Prolific	05	10	25
Long Green	05	10	25

ONION—

	Pkt.	oz.	lb.
Danvers Yellow. Round	\$0 05	\$0 10	\$1 25
“ “ Globe	05	10	1 25
Extra Early Flat Red	05	10	1 25
Southport Red Globe	05	15	1 35
“ White Globe	05	20	2 25
“ Yellow Globe	05	15	1 35
Wethersfield Large Red	05	10	1 15
White Portugal	05	20	2 25
Prize-Taker	05	20	2 50
Imported Italian Varieties.			
Giant Rocca	05	10	1 25
“ Red Italian Tripoli	05	10	1 25
“ White Italian Tripoli	05	10	1 25
New Adriatic Barletta	05	20	2 50
Pompeii	05	15	1 50
Queen	05	15	1 50
Bermuda Pale Red	05	20	1 50
“ White	05	20	1 50
ONION SETS—			
White			Bus. \$4 00
Yellow			prices variable. 4 00
Red			4 00
Potato Onions			} Prices upon application.
Top or Button Onions			
Shallots			
PARSNIP—			
Long Smooth or Hollow	Pkt.	oz.	lb.
Crown	\$0 05	\$0 10	\$0 30
Early Round	05	10	50
PARSLEY—			
Emerald	05	15	75
Extra Double Curled, 100 lb., \$45	05	10	50
Hamburg, or Turnip-Rooted	05	10	60
PEAS, Extra Early and Second Early—			
First of all	Qt. \$0 15	Bus. \$2 90	
American Wonder		20	4 00
Extra Early Premium Gem		20	3 00
Horsford's Market Garden		20	3 15
Improved Daniel O'Rourke. (Selected Stock)		15	2 60
McLean's Advancer		20	2 75
McLean's Little Gem		20	3 00
Maud S. Extra Select Strain of Extra Early		20	2 90
Philadelphia Extra Early		15	2 50
Tom Thumb		20	4 00
PEAS, for General Crop—			
Abundance		20	3 00
Black-Eyed Marrowfat. (Hand picked)		10	1 75
Champion of England		20	2 60
Culverwell's Telegraph		20	4 00
Everbearing		20	3 10
Pride of the Market		20	4 25
Stratagem		20	5 00
Telephone		20	4 00
White Marrowfat		15	1 75
Yorkshire Hero		20	2 60
Canada Field, white for soiling		1	40

VEGETABLE SEEDS—Continued.

PEPPER—	Pkt.	oz.	lb.
Child's Celestial.....	\$0 05	\$0 40	\$2 00
Sweet Spanish.....	05	25	1 50
Large Bell, or Bull Nose....	05	25	1 50
Sweet Mountain or Mammoth.....	05	25	1 50
Ruby King.....	05	35	1 60
Monstrous or grossium.....	05	30	3 00
Long Red Cayenne.....	05	25	1 25
Chili.....	05	25	1 75
Cherry.....			1 75

POTATOES—We are in position to furnish all the leading kinds, and would be glad to quote prices for any quantity and kind upon application.

PUMPKIN—	Pkt.	oz.	lb.
Large Cheese.....	\$0 05	\$0 10	\$0 50
Large Tours, or Mammoth....	05	20	50
Connecticut Field, Bush, \$3.		05	15

RHUBARB—	Pkt.	oz.	lb.
Linnaeus.....	05	20	1 00
Victoria.....	05	20	1 00

RADISH—	Pkt.	oz.	lb.
Beckert's Chartier.....	05	10	40
California Mammoth White Winter.....	05	10	75
Early Scarlet Globe.....	05	10	40
Early White Turnip.....	05	10	35
Early Round Dark Red. Per 100 lbs., \$25. (10 lbs. at 100 lb. rates).....	05	10	30
Early Scarlet Turnip. Per 100 lbs., \$32. (10 lbs. at 100 lb. rates).....	05	10	25
French Breakfast.....	05	10	30
Giant White Stuttgart.....	05	10	35
Long Scarlet Short-Top....	05	10	25
Long Black Spanish.....	05	10	35
Long White Spanish.....	05	10	50
Long White Vienna or Lady Finger.....	05	10	40
Olive-shaped Scarlet.....	05	10	35
Red Forcing Turnip.....	05	10	40
Rose China Winter.....	05	10	45
White-tipped Scarlet Turnip. Per 100 lbs. \$30. (10 lbs. at 100 lb. rates).....	05	10	35
White Summer Turnip.....	05	10	35
White Olive-Shaped.....	05	10	40
White Strasburgh.....	05	10	40
Yellow or golden Summer Turnip.....	05	10	35

SALSIFY or OYSTER PLANT—

Long White.....	05	10	45
Improved Mammoth Sandwich Island.....	05	15	80

SCORZNERA or BLACK

OYSTER PLANT... ..	05	15	1 00
--------------------	----	----	------

SEA-KALE.....	10	25	3 00
---------------	----	----	------

SORREL—

Broad-Leaved.....	10	15	80
-------------------	----	----	----

SPINACH—

	Pkt.	oz.	lb.
Bloomsdale or Norfolk Savoy-Leaved.....	\$0 05	\$0	20
Round-Leaved. \$11 per 100 lbs.....		05	15
Long Standing. \$12 per 100 lbs.....		05	15
Prickly. \$14 per 100 lbs....		05	20
Large Round-Leaf Viroflay. \$12 per 100 lbs.....		05	15
Thick-Leaved. \$12 per 100 lbs.....		05	15
New Zealand.....	10	15	75

SQUASH—

Boston Marrow. Per 100, \$30 00.....	05	10	35
Bush Summer Crook-Neck..	05	10	35
Early Prolific Marrow...	05	20	40
Essex Hybrid.....	05	10	40
Fordhook.....	05	15	1 00
Hubbard.....	05	10	35
Mammoth Chili.....	05	15	1 25
Perfect Gem.....	05	10	40
Pine Apple.....	05	10	40
Sibley.....	05	10	40
White Bush Scalloped..	05	10	35
Yellow Bush Scalloped..	05	10	30

TOBACCO SEED—

Gold Leaf.....	05	25	3 00
Hester.....	05	25	2 75
Florida.....	05	25	3 00
Sumatra.....	05	25	3 50
Primus.....	05	25	3 50
Connecticut Seed-Leaf....	05	25	2 50
Imported Havana.....	05	50	3 50
Virginia.....	05	25	3 00
Kentucky.....	05	25	3 00
Maryland.....	05	25	2 50

TOMATO—

Acme.....	05	20	1 25
Early Ruby. (True)....	10	30	1 75
Essex Hybrid.....	05	20	1 25
Golden Queen.....	05	15	1 75
Hathaway's Excelsior.....	05	15	1 50
Livingston's Favorite....	05	15	1 25
Livingston's Beauty....	05	15	1 50
Mikado.....	05	20	1 75
New Dwarf Champion... ..	05	15	2 00
Paragon.....	05	15	1 25
Perfection.....	05	15	1 25
Queen.....	05	15	1 25
Table Queen. (True)....	10	15	1 75
Trophy, Extra Selected. .	05	15	1 75
Volunteer.....	05	15	1 50
Red Pear-shaped... ..	10	20	2 00
Yellow Plum.....	10	20	2 00
Red Cherry.....	10	20	3 00
Greengage.....	10	20	2 00
Strawberry or Winter Cherry	10	20	3 00
Peach.....	10	20	1 60

TURNIP—

Flat Dutch (Early).....	10	20	
Golden Ball.....	10	22	



New Chrysanthemum—HARRY MAY.

See Page 41.



New Chrysanthemum—ADA McVICKAR.

See Page 41.

VEGETABLE SEEDS—Continued.

	Pkt.	oz.	lb.
TURNIP—			
Milan Extra Early.....	\$0 10		\$0 50
Purple-Top White Globe...	10	20	
Red-Top Strap-Leaf...	10	20	
White Egg.....	10	22	
White Strap-Leaf (Early)...	10	25	
Yellow Globe.....	10	23	
Yellow Stone.....	10	25	
RUTA BAGA—			
Purple-Top Improved			
American.....	10	25	
Skirving's Purple Top.....	10	20	
Large White French.....	10	35	
SWEET POT and MEDICINAL HERBS—			
Anise.....	05	10	60

HERBS—continued

	Pkt.	oz.	lb.
Balm.....	\$0 05	\$0 30	\$3 00
Basil, Sweet.....	05	25	1 25
Bene.....	05	10	1 00
Dill.....	05	10	50
Fennel, sweet.....	05	10	75
Horehound.....	05	40	2 50
Hyssop.....	05	20	2 50
Lavender.....	05	20	1 00
Majoram, Sweet.....	05	20	1 50
Rosemary.....	05	30	4 00
Rue.....	05	20	1 50
Sage.....	05	20	1 75
Savory Summer.....	05	20	1 00
Thyme, Broad-leaved English.....	05	25	2 75
Tansy.....	05	30	2 50

Sundry Agricultural Seeds.

GRASSES—

	Per lb.	Per bu.
Finest Mixed Lawn Grass.....		\$2 50
English Rye Grass.....	\$0 05	
Italian Rye Grass.....	10	
Red Top Grass.....	05	
" " " Absolutely clean.....	10	
Kentucky Blue Grass. Fancy; extra clean.....	20	
Orchard Grass.....	15	
Timothy or Herd Grass. 45 lbs. to bushel. Market price (present).		2 50

CLOVER—

	Per lb.
Alsike.....	\$0 22
Red..... Market price (present).	12
White.....	20
Alfalfa.....	16
Sainfoin.....	15
Scarlet.....	20
Japan.....	50

SORGHUM—

Broom Corn, Evergreen.....	10
Doura, Rural Branching.....	15
" Yellow Branching.....	15
Kaffir Corn.....	15
Sugar Cane, Early Amber. Per bu., \$3.	10
" Early Orange..... " 3.	10

MILLET—

Hungarian Grass. 48 lbs. to bushel...	\$2 00
German or Golden... Market price, about	2 00

GRAINS, ETC.—

	Per bu.
Rye, Excelsior Winter.....	\$1 50
Wheat. Prices on application.....	about 2 00
Buckwheat, Silver Hull.....	1 00
" New Japan.....	1 50
Wild Rice..... per lb., 25 cts..	
Vetches, or Tares.....	3 50
Russian Sunflower. 25 lbs. to bushel..	2 00
Cotton Seed, Sea Island.. per lb., 10 cts.	
Osage Orange..... " 20 cts.	

BIRD SEED—

Canary.....	3 00
Hemp.....	3 00
Rape.....	2 50
Maw.....	.20 cts per lb.

FRUIT SEEDS—

	Per oz.	lb.	bu.
Apple.....	\$0 30	\$8 00	
Cherry, Mahaleb.....		25	
Currant, Red, White and Black.....	30	2 50	
Gooseberry, Red, Yellow and Green.....	1 00		
Peach Pits.....			2 75
Pear.....	20	2 00	
Quince.....	20	2 00	
Raspberry.....	40	3 00	
Strawberry, Large and Red Alpine.....	75		



Plant Novelties.

The following are the most desirable new plants, recommended to the Florists' trade. They are plants that no progressive Florist can afford to be without, while a grand lot of new Chrysanthemums will be found under another heading.

PTERIS VICTORIÆ. One of the grandest Ferns ever introduced, originally discovered by I. FORSTERMAN. The foliage is neatly divided, the sterile fronds being much broader than the fertile ones. The middle of the frond is beautifully variegated with silvery white, giving the plant a most unique appearance.

Price, Strong, 2 inch, \$1.00 each. \$10.00 per doz.
 " Fine 3 " 1.25 " 12.00 " "

NEW GENISTAS. The following set was raised from seed by MR. JAS. DEAN, and as everybody knows, raised quite a sensation when exhibited at the Lenox Lyceum Exhibition. Genistas have become such popular flowers for Easter decoration that they are indispensable to every Florist. The hybrids as described below are improvements upon the common type, having finer foliage, and a good many having the desirable drooping habit; others again have new colors in flower, and altogether, it is a set of plants that nobody can afford to be without. Plants will be ready March 1st.

50c. each; \$5.00 per dozen for any of the varieties, or \$5.00 for the set of 12.

No. 1. El Dorado—A most distinct variety, drooping habit. The flower spikes are large and of a bright yellow, and the plant remains in flower longer than any of the other Genistas.

No. 2. Gold—Beautiful foliage; flower of good size, deep golden yellow color; habit good, and it will make an excellent variety.

No. 3. California—Very fine Genista, with good, distinct foliage; flower deep yellow, of good size and substance.

No. 4. Lemon—A pale lemon or yellow color, which is a most distinct shade of color in the Genista.

No. 5. Canary—Flower light shade of yellow; foliage distinctly cut and of a new type.

No. 6. Oriole—Beautiful plant with dark golden yellow flowers and good foliage.

No. 7. Arizona—Very strong grower, fine form and foliage; good yellow flower.

No. 8. Primrose—Foliage very distinct and fine cut; flowers pale yellow.

No. 9. Golden Gate—Fine habit, distinct foliage of a dark green color; flowers bright yellow. A good plant.

No. 10. Amber—Foliage distinct; flowers very light lemon color.

No. 11. Sunshine—Fine robust grower, good foliage; flowers large and of a most beautiful bright yellow color.

No. 12. Citron—Very distinct foliage. Plant produces fine spikes of golden yellow flowers.

Florists' Set of New Chrysanthemums.

We have selected the following varieties, embracing the very cream of the different sorts sent out by us this year of our own seedlings, as being superior to all others for commercial purposes. When we say *superior*, we mean it. What Florist wants to spend his time and money cultivating inferior sorts which command a low price, when he can just as well grow a superior article at a greater profit? Every year brings great improvements in the habit, character and quality of this favorite Fall Flower, and the success attained by us, taking *every first premium* for pot plants offered at the Madison Square Chrysanthemum Show, Nov. 2d to 9th, proves this fact. This we have accomplished with our new Seedlings, which has thus established their superiority over existing kinds.



NEW DROOPING GENISTA,

See Page 38.



New Chrysantheum—MISS ANNIE MANDA.

See Page 41.

New Chrysanthemums.

The large size of the flowers, their strong habit of growth and excellent shipping qualities, recommend them to all, and to those growing flowers for profit we would say, discard all the old worthless sorts and book up with the prize winners.

- Ada McVickar**—A grand variety of strong habit, producing immense creamy white flowers with broad, thick, reflexed petals. One of the best for specimen blooms, bush plants or standards.
- Col. H. M. Boies**—Vigorous habit. Flowers large rosy pink, with twisted petals veined with a lighter shade; full center. A grand exhibition variety.
- Dr. H. A. Mandeville**—Flowers large, full double, bright chrome yellow; petals very long.
- Francis Tarbox**—Large flowered and full center; petals broad, convex silvery pink with a narrow line of pale lilac at the extreme edge. A grand early flowering variety.
- George Savage**—Flowers very large, pure white, with broad, strongly incurved petals, making the flower almost hemispherical and very solid. A grand variety of vigorous free flowering habit, and useful for cut blooms for exhibition.
- Harry May**—Flower very large and deep, full double, forming when well opened a massive sphere, color deep old gold, with occasional veins of red; petals very broad and thick, spoon-shaped. Foliage very luxuriant, thick and leathery, deep green; quite distinct among chrysanthemums. One of the most vigorous growing varieties in cultivation, and unsurpassed for growing, either as a standard, as a bush plant or for cut blooms for exhibition.
- Miss Annie Manda**—Flower very high and compact, perfectly double, incurved, of the purest white. The numerous petals are well furnished with long glandular hair-like outgrowths, giving the flower a unique appearance, far surpassing the celebrated variety, "Mrs. Alpheus Hardy." The plant is of strong and vigorous habit, carrying the flower erect on a stout stem. Another recommendation is that the flower is *sweet scented*.
- Mr. A. G. Ramsay**—Flowers of medium size, full center; petals broad, upper surface of the expanded limb deep Indian red, yellowish at the tip, under surface yellowish, veined with lines of red. A grand and striking variety.
- Miss Bertha N. Robison**—Flowers rose pink with red centre, very early, of large size and good substance. One of the earliest and best varieties for exhibition purposes either as pot plants or cut blooms.
- Mr. D. S. Brown**—Flower medium size, semi-double, of a clear canary-yellow color when first opening, but changing to cream color as the petals expand. A distinct color.
- Mrs. E. D. Adams**—Flower very large, petals of medium width, very long, twisted; the outer ones swirled, as if the flower had been turned swiftly on its stem, color pure white. One of the best and most distinct white chrysanthemums in cultivation. We had specimens measuring eighteen inches over the flower, from tip to tip of petals. Makes a grand bush plant.
- Mrs. Herbert Leon**—Flowers very large, full double, pink with broad reflexed petals. A very fine early variety.
- Mrs. H. A. Mandeville**—Flowers large, perfectly spherical, with broad, incurved petals of a terra cotta yellow. Plant of vigorous habit and good for exhibition purposes.
- Mr. Hicks Arnold**—A very strong and floriferous variety, bearing large, full double flowers of an old gold color, lighting up wonderfully by artificial light. When fully open the flower is almost spherical. The freest growing variety known, and one which may be grown with success for almost any purpose.
- Mrs. J. Hood Wright**—Flowers large full double, of the purest white, with reflexed twisted petals. A strong grower and one of the best early varieties in cultivation.
- Mrs. John Eyerman**—Flower semi-globular, full double, petals decidedly spoon-shaped, the lower half being tubular, while the limb is broadly expanded; upper surface rose pink, lower pale lilac. A grand variety for exhibition purposes.
- Mrs. E. D. Church**—One of the earliest varieties in cultivation; flowers full double, of medium size, borne on stout stems and lasting long in perfection. Color pink in various shades.
- Miss M. Colgate**—Flowers perfectly hemispherical, compact, with a full center, pure white; petals, broad incurved. A grand pure white variety, a strong grower and free bloomer. Good for all exhibition purposes.
- Mrs. R. Benner**—Flowers medium size, of a deep lilac pink color with a red center. A very striking late variety.
- Mrs. T. F. Mercer**—Flowers large, bluish white, petals broad, incurved, the inner regularly imbricated, the outer more spreading. One of the best varieties for exhibition purposes, and valuable on account of its late flowering.
- Mrs. W. S. Kimball**—Flowers very large, full double, pale bluish or creamy white with a yellowish center; petals very broad, reflexed. One of the finest varieties for exhibition purposes.

NEW CHRYSANTHEMUMS—Continued.

Mrs. M. F. Gallagher—Flowers large, semi-globular, with full center; petals deep maroon, crimson above, paler below. One of the very best dark varieties.

Newark—Large pure white flower, with very broad and thick round petals. The finest single white variety in cultivation.

W. A. Manda—This is the new golden yellow hairy chrysanthemum. Flowers very large, of a clear golden yellow. The plant is vigorous in growth, and the flower is borne upright on a stout stem. This is the grandest introduction from Japan made during the past year, and no collection can afford to be without this variety.

Fine strong plants ready March 1st,

Price, 75 cents each; \$8 00 per dozen; \$50 00 per hundred.

The collection of 25 Prize varieties, one of each for \$16.

“ “ “ “ two “ “ 28
 “ “ “ “ three “ “ 38.

GENERAL LIST

—OF—

CHRYSANTHEMUMS,

SUITABLE FOR FLORISTS.

(J) Japanese. (C) Chinese. (A) Anemone.

	Per Doz.	Per 100
Atlanta (J). Mauve color, high flowers, somewhat twisted.....	\$0 80	8 00
Ami Hoste (C). Pale yellow, striped carmine.....	2 00	16 00
Alcazar (J). Incurved buff red, fine form, large.....	1 00	8 00
Bohemia. Venetian red, large reflexed, strong, extra.....	1 50	12 00
Cortez (J). Mahogany inside lighter outside, incurved.....	1 00	8 00
Cleopatre (J). Chamois shaded rose, broad petals.....	1 50	12 00
Connecticut (J). Madder, white tips, twisted, large.....	80	6 00
Crystal Wave (J). White, fine form, late.....	60	4 00
Cullingfordii (J). Brilliant crimson, underside old gold.....	60	4 00
Cythere (J). Amaranth; purple shaded brown.....	60	4 00
Daisy. Fine single flower, pure white, symmetrical.....	1 25	10 00
Delaware (A). Large, white petals, pale yellow near center.....	1 50	12 00
E. G. Hill (J). Yellow shaded red, large.....	60	4 00
Elk Horn (J). Soft pearl color, resembling Elk horns.....	80	6 00
Etoile de Lyon (J). White changing to purple.....	1 50	12 00
Excellent (J). Rosy pink, large, fine.....	60	4 00
Flora McDonald (J). Sulphur white, incurved, fine.....	60	4 00
Flora Fewkes (J). Sulphur white, reflexed.....	60	4 00
Frank Wilcox (J). Amber shaded bronze, lasts long.....	60	4 00
Gold (J). Pure yellow, large.....	60	4 00
Grandiflorum (J). Golden yellow, fine.....	60	4 00
Grand Mogul (J). White tinted rose.....	1 50	12 00
Harry E. Widener (J). Bright lemon yellow, incurved.....	1 50	12 00
H. Waterer (J). Very large, yellow tinted red, late.....	80	6 00
Isidore Feral. Delicate lilac rose, large.....	1 50	12 00
Ithaca (J). Rose color, full outside petals, tubular.....	1 00	8 00
Ivory (C). Pure white, large, fine form.....	1 00	8 00
James R. Pitcher (J). Rose color, reflexed.....	1 00	8 00
Jean Humphry (J). Fawn color, inner petals incurved.....	60	4 00
Jessica D. Snowy white, large flowers.....	60	4 00



New Golden Yellow Hairy Chrysanthemum—W. A. MANDA.

See Page 42.



New Chrysanthemum—MISS BERTHA N. ROBISON.

See Page 41.

CHRYSANTHEMUMS—Continued.

	Per Doz.	Per 100
John Lane (J). Rose pink, peach shadings, gold tips.....	\$0 60	\$4 00
John Dyer (J). Chrome yellow striped red.....	1 50	12 00
Joe Collins (J). Coppery bronze.....	80	6 00
John Firth (C). Light pink, incurved, good.....	80	6 00
Khivia (J). Light rose, fine flower.....	1 25	10 00
Kioto (J). Deep yellow, large, incurved.....	60	4 00
La Fortune (J). Golden yellow petals, large, long.....	60	4 00
L. B. Dana (J). Golden amber, fine form, early.....	60	4 00
L. Canning (J). White, very free, fine, double.....	60	4 00
Le Cte. Foncher de Cariel (J). Violet, fine form.....	60	4 00
Lilian B. Bird (J). Shrimp pink, tubular petals.....	60	4 00
Magicienne (J). Chamois, large spreading, free.....	60	4 00
Marvel (J). White, large maroon spots.....	60	4 00
M. Ulrich Brunner. Crimson maroon, reflexed.....	1 50	12 00
M. Hiliot (J). Bright chestnut red.....	1 50	12 00
Mad. Alfred Carriere (J). Milky white, broad petals, globular.....	1 25	10 00
Mad. Darriar (C). Pink, large flower.....	1 50	12 00
Mad. C. Audiguier (J). Deep mauve, very large.....	60	4 00
Mad. Bacco (J). Soft rose.....	60	4 00
Mad. Lacroix (J). White, free bloomer.....	60	4 00
Mad. Louise Le Roy (J). White, creamy centre, incurved.....	60	4 00
Mad. L. Langlois (J). White tinted rose.....	60	4 00
M'd'le Camille Richard (C). Light rose, old gold center.....	1 50	12 00
Mermaid (J). Bright pink, fine form.....	1 50	12 00
Michigan. Rich magenta, very floriferous.....	1 00	8 00
Miss L. Cartledge (J). Dark rose, very fine.....	80	6 00
Miss Annie Hartshorn (C). Incurved, large pure white.....	60	4 00
Miss Meredith (J). Fine pink, incurved.....	60	4 00
Mont Blanc (J). Pure white.....	60	4 00
Mrs. C. Vanderbilt (J). Very large, rose madder.....	60	4 00
Mrs. F. Clinton (J). Canary changing to straw.....	80	6 00
Mrs. T. C. Price (J). Fine yellow.....	1 00	8 00
Mrs. G. Herring (J). Silvery rose, large.....	1 25	10 00
Mrs. Langtry (J). White, good form.....	80	6 00
Mrs. D. D. L. Farson (J). Rose color, fine form.....	80	6 00
Mrs. Hicks Arnold (J). Beautiful soft rose, the finest early variety.....	80	6 00
Mrs. Grace Hill (J). Delicate blush, incurved, grand variety.....	1 00	8 00
Mrs. F. Thompson (J). Silvery pink, incurved.....	60	4 00
Mrs. Jesse Barr (J). White, incurved, fine.....	60	4 00
Mrs. De Witt Smith (J). Soft rose changing to white.....	60	4 00
Mrs. Libbie Allan (J). Large yellow, incurved.....	1 50	12 00
Mrs. N. G. Thomas (J). Creamy white, large, incurved.....	60	4 00
Mrs. G. B. Topham. White tinted lavender, semi-double.....	60	4 00
Pelican (J). White, large flowers, broad curled florets.....	60	4 00
Pres. Hyde (J). Rich yellow, large, full, reflexed.....	60	4 00
Ramona (J). Bright amber, large and full.....	60	4 00
Rohallion (J). Dark chrome yellow, twisted petals.....	1 25	10 00
Rose Laing (J). Violet crimson, outside silvery, early.....	1 25	10 00
Robert Flowerday (J). Petals crimson inside, old gold outside, incurved.....	1 00	8 00
Sabine Mea (C). Golden yellow, large, globular.....	1 50	12 00
Shasta (J). Large spherical blooms of tubular white florets.....	60	4 00
Snow Ball (J). Round white like a snowball.....	60	4 00
Souv. de Menier. Dark crimson maroon, reflexed.....	1 00	8 00
Sunnyside (J). Flesh color changing to white.....	1 00	8 00
Twilight (J). Lemon, changing to white, strong.....	80	6 00
Tyro (J). Light Fawn, high flower, broad petals.....	1 00	8 00
Ulysses. Single Magenta, outside lilac, incurving.....	1 00	8 00
Val 'd Andoree (J). Reddish brown, fine form.....	60	4 00
Veil 'd Or (J). Deep yellow, large and fine.....	60	4 00
Vice-Pres. Audiguier (J). Soft rose, white points, large.....	2 00	16 00
Ville Marseilles (J). Dark pink, reflexed.....	1 50	12 00
Violet Rose (J). Rosy violet, large incurved.....	60	4 00

CHRYSANTHEMUMS—Continued.

	Per Doz.	Per 100
Volunteer (J). White tinted pink, large.....	\$1 00	\$8 00
W. W. Lunt (J). Lemon-yellow, large double.....	1 00	8 00
W. H. Lincoln (J). Golden yellow, large, fine.....	60	4 00
William Holmes (J). Bright velvety crimson, medium size.....	1 50	12 00
William Lane (J). Brick red, large flower.....	1 50	12 00
Yonitza (C). White, incurved, fine form, large.....	80	6 00

For other Varieties see our General Catalogue.

Palms.

Of Palms we have a fine large stock, clean and well grown. *Have not been forced, but grown cold*, consequently they are hardier, bear rough handling, and are better adapted for decorative purposes than those grown in strong heat. The kinds enumerated below are the best varieties in cultivation.

	Each.	Each.
ARECA Baueri. A fine strong, dark foliaged palm; strong, robust habit.		
Good plants, 15 inch high.....	\$0 75	
Strong " 18 "	1 00	
" " 24 "	1 50	
" " 30 "	2 00	
" " 36 "	3 00	
" " 42 "	4 00	
" " 48 "	5 00	
Extra large specimens, 5 ft.	\$6 to 9 00	
A. lutescens. Very graceful foliage and indispensable for decoration.		
Nice plants, single stems, 12 inch.....	25	
Good " " " 18 "	35	
" " " " 24 "	50	
" " " " 30 "	75	
" " " " 36 "	1 00	
" " " 3 in a pot, 12 "	50	
" " " " 15 to 18 "	75	
" " " " 18 to 20 "	1 00	
Fine bush plants, 3½ to 4 ft.	\$3 to 4 00	
" " " 4 to 4½ ft.	4 to 5 00	
A. sapida. A strong growing palm, stands rough usage, fine.		
Good plants, 2½ ft. high.....	2 50	
Strong and fine plants.....	3 50	
CHAMAEROPS elegans. A fine decorative palm hardy and tough.		
Fine large spreading specimens, 5 ft.	8 00	
" " " " 6 ft.	10 00	
Extra fine " " " 6 to 7 ft.	12 00	
COCOS Weddelliana. An elegant fine foliaged palm for mantel and table decorations.		
Nice plants, 8 to 10 inches.....	35	
" " " 12 "	50	
Extra fine specimens, 2½ to 3 ft.	3 00	
KENTIAS. A very popular and useful variety of palms, their long graceful foliage and erect habit make them almost indispensable for decorations.		
K. Belmoreana.		
Five to six leaves, 10 inch.....	75	
" " " 15 "	1 00	
K. Pelmoreana—continued		
Strong plants 24 inch.....	\$2 00	
" " " 36 "	4 00	
Extra large specimens, 5½ to 6 ft.	\$15 to 25 00	
K. Forsteriana.		
Good young plants, 15 inch.....	75	
Fine plants, 4 to 5 leaves, 18 "	1 00	
Strong " " 24 "	1 50	
" " " 30 "	2 00	
Fine well furnished plants 36 "	3 00	
Fine specimens, 5 to 6 ft.	\$7 to 10 00	
Elegant " 6 to 8 ft.	\$12 to 20 00	
LATANIA Borbonica. One of the most useful palms grown, with large fan-shaped foliage.		
Good young plants, 4 to 5 leaves, 18 inches high.....	50	
Strong plants, 5 to 6 leaves, 20 inch.....	75	
" " " " 24 "	1 00	
Extra strong plants 7 to 8 leaves, 30 inch.....	\$2 to 3 00	
Specimens, 8 to 10 leaves, 36 inch....	4 to 5 00	
" " 9 to 11 leaves, 42 "	5 to 6 00	
PHOENIX. Date palms. Very useful and ornamental, strong upright growing, very effective.		
P. Canariensis. Fine plants, 2½ to 3 ft.	\$3 to 4 00	
P. reclinata. Fine specimens, 3 to 3½ ft. 4 to 5 00		
P. rupicola. One of the finest decorative palms in the world. Stock very scarce.		
Plants to grow on.....	85	
Fine plants, 15 to 18 inch.....	\$2 to 3 00	
Half specimens, 2½ to 3 ft.	5 to 8 00	
P. Senegalensis. New glaucous species. Very graceful.		
Fine specimens, 3 to 3½ ft.	\$4 to 5 00	
RHAPIS flabelliformis. A Chinese and Japanese palm of strong upright habit, with reed-like stems and divided leaves. A very effective variety for decorations, and standing more abuse and rough usage without getting unsightly than any palm in cultivation.		
Nice plants, 2 to 2½ ft.	3 00	
Good " two shoots, 2½ ft	3 00	
Fine " three to four shoots, 3 ft.	5 00	
Extra large specimens. Very fine....	\$6 to 10 00	

200 other Varieties of Palms in Stock.

Ferns and Selaginellas.

This class of plants is extensively used for ornamenting dinner tables as well as for other decorative purposes. We have thousands of all the leading sorts at low prices, while our collection comprises all the best and valuable varieties.

	Per doz.	Per 100		Per doz.	Per 100
ADIANTUM cuneatum. The popular sort for cutting; very largely grown. Fine plants.....	\$0 75	\$ 6 00	PTERIS Argyrea. Large plants, 50 cents each		
Fine strong plants.....	1 50	10 00		ASSORTED Ferns for decorative purposes. Fine plants.....	\$0 75
SCOLOPENDRIUM vulgare. A fine hardy fern for decorations; handsome and quite distinct from other ferns. Good plants....	1 25	6 00	Extra strong plants.....	1 25	8 00.
Extra strong plants.....	1 50	10 00	ASSORTED Selaginellas and Ferns. We offer a splendid assortment of these valuable classes of plants, mixed, suitable for filling jardinières, fern cases, etc. All strong growers. Fine plants.....	75	5 00
SELAGINELLA, in varieties. Fine plants for decoration; used as ferns. Fine plants.....	1 25	8 00	Extra strong.....	1 25	8 00
Strong plants.....	1 75	10 00			

TO FLORISTS.

Our extensive stock includes all the rarer and less known desirable plants in all classes, as well as the commoner sorts which are known to every florist. We will take pleasure in giving estimates for filling greenhouses or will send descriptions of special plants of Palms, Tree Ferns, Cycads, Orchids, etc., which may be wanted.

We are also prepared to make selections of hardy herbaceous plants and bulbs for planting out around suburban residences, in beds and borders, or public parks and gardens, however large. Correspondence in regard to matters of this kind is invited.

CUT FLOWERS.

We are at all times prepared to send boxes of cut Orchid flowers, etc., on receipt of a letter or telegram. Some species or other are in blossom at any season of the year, and for special occasions the stock of the local florist is either inadequate or unsuitable. In the autumn and winter when our large collections of Chrysanthemums and Genistas are in blossom, we can supply cut flowers or specimen plants in flower of almost any description and in almost any quantity. We are glad to give information regarding what plants are in flower at any time.



Flowering and Foliage Plants.

Our stock of these classes of plants is very large and embraces all the really new and rare, as well as the best of the older varieties and we think the most complete in this country.

The following are the best and most profitable sorts for Florists' use, and we can supply these varieties in quantities, but those desiring a more extended list, can by applying for our Retail Catalogue, secure almost anything desired, at a discount off retail prices.

	Each.	Each.
ANTHURIUMS. Fine brilliant flowering plants. The flowers lasting a long time when cut.		
A. Andreanum. Brilliant, dazzling scarlet, large flower. Good strong plants.....	75c to \$3 00	
A. Scherzerianum. Dwarf growing; very bright scarlet, smaller flowers.....	75c to 1 00	
ASPARAGUS Plumosus. An elegant evergreen climber. Now in great demand by Florists' for decorative purposes; far superior to anything grown for trimming mantels, chandeliers, etc., heretofore very scarce; single strings when cut bringing generally from \$10 to \$15 per dozen wholesale in the Eastern markets, while stock plants for propagating could scarcely be had at any price. We offer <i>strong imported</i> plants, which are well established and in fine condition for making good strong strings the coming season. Ready after March 1st.		
3 inch pot plants, fine, strong.	} Prices by the hundred or thousand on extra " " } application.	
4 " " " " " " " " " "		
5 " " " " very " " "		
6 " " " " extra " " "		
ASPARAGUS tenuissimus. Fine filmy foliage climber, useful for cutting, 5 in. pots	50	
ALOCASIA Metallica. A very striking foliage plant, with bronze metallic leaves....	75	
A. Sedenii. Peculiar arrow shaped cut foliage, light green with light silvery veins.....	1 25	
A. Thibautiana. Heart shaped foliage, light green, veins and edges white.....	1 50	
ANTHURIUM Crystallinum. Dark velvety green foliage, light silvery veins.....	75	
A. Grande. Bronzy green foliage, light veins, very large.....	75	
ARALIA Sieboldi. Palm like foliage, very tough, bears handling well, 4 inch pots, nice plants.....	35	
A. Sieboldi Variegata. Elegant green and silver foliage, very effective, fine strong plants.....	1 00	
A. Filicifolia. Fine cut foliage.....	35	
ASPIDISTRA. Half hardy plants, very popular, long, bright leaves, succeed fine where other plants fail.		
A. Lurida. Green foliage, good plants.....	\$0 50	
Strong plants.....	75	
Specimen plants.....	2 50	
A. Lurida Variegata. Elegant green and ivory white foliage	75	
Strong plants.....	1 00	
Specimen plants.....	\$3 00 to 10 00	
ARAUCARIA. A valuable tropical evergreen for decorative purposes, of very graceful and symmetrical growth.		
A. Cookii. Fine plants to grow on.....	1 00	
A. Excelsa. Fine plants in 5 inch pots....	1 75	
“ Extra fine plants.....	3 50	
“ Large specimens.....	\$5 00 to 10 00	
BROMELIADS. We have a fine selection of these interesting plants in baskets. They are very striking and ornamental in decorations.....	75c. to 3 00	
	Each Per Doz.	
BEGONIAS, Best Rex Varieties.	\$0 25	\$2 50
B. Argentea hirsuta. Center and edges green and chocolate, speckled silver surrounding broad silver band.		
B. Adolph Pollock. Silvery, very faintly edged and centered light green.		
B. Comte de Limmingki. Silvery, finely edged and centered with greenish purple.		
B. Duc de Brabant. Center and outer edge dark purplish green, inner bands of silver and light green.		
B. Louis Closson. Dark chocolate edges and center, encircling dark pink silvery band, occasional pink spots in center and edge.		
B. Lucie Closson. Purplish edges, center light green, mottled.		
B. Mrs. A. Barron. Chocolate edges and center, surrounding crimson band, denticulated foliage.		
B. Mad. Siebold. Silvery, shaded in center with green, edges mottled green with delicate pinkish shadings.		
B. Rio de Ferd. Major. Silver, edged and centered partly with greenish velvet.		
B. Voi Lactee. Silvery, center light green mottled dark green.		



FLOWERING AND FOLIAGE ANTHURIUMS.

See Page 50.



DRACÆNA LINDENI.

See Page 53.

Flowering and Foliage Plants—Continued.

BEGONIAS, Tuberous rooted.

Our collection of these favorites is as fine as any in cultivation and far superior to many of the celebrated European growers.

	Per doz.	Per 100
Fine large bulbs only, mixed, all colors.	\$1 25	\$9 00
“ “ white shades.	1 25	10 00
“ “ Red “	1 25	10 00
“ “ Rose “	1 25	10 00
“ “ Yellow & bronze	1 50	12 00

Each

CALADIUM. Elegant summer decorative plants. Our collection embraces many choice varieties.35c to . \$0 50

CISSUS discolor. An elegant greenhouse climber; foliage very rich in effect. 25

CROTONS. One of the most beautiful variegated foliage plants, of very easy culture. We offer many fine varieties. . .35c to 50

CHRYSANTHEMUM frutescens. The well-known Paris Daisy or Marguerite White. 10

CRYPTOMERIA elegans. A beautiful evergreen conifer.

Fine plants, 10 to 12 inch high. 1 00

CYCAS revoluta. A very useful plant. Foliage always in demand for funeral designs.

Small plants for growing on. 25

Fine plants. 3 50

Large specimens. \$5 to 15 00

CYPERUS alternifolius. A pretty grass like plant for sub-tropical groups. . . .25c to 50

C. alternifolius variegatus. Pretty green and white foliage. 1 00

DRACÆNA. This genus includes many grand plants for decoration, their broad leaves and stately habit make them useful and attractive.

D. Alsace-Lorraine. Fine dark leaves with rich crimson coloring. 1 00

D. Cantrelli. Purplish ground, brilliant crimson tints. 1 25

D. Draco. True Dragon Tree. Erect green leaves. 2 00

D. Lindenii. Drooping habit, leaves deep green, striped creamy white and yellow.

Plants, 12 inches high. 1 00

Extra strong plants. 2 50

Specimens. \$4 to 8 00

D. Massangeana. Similar to Lindenii in habit, foliage green striped pale yellow. . . 1 25

D. Neo Caledonica. Massive erect foliage, dark green, purplish tinted. Stands rough usage equal to the hardiest palms; fine for decorations. \$1 to 3 00

D. Mad. Heine. Upright habit. Green leaves edged ivory white. 1 00

D. Terminalis. Chocolate crimson, tinted carmine. 25c to 1 00

Each.

DIEFFENBACHIA magnifica. One of the best of the whole class. Dark green and white. \$0 50

D. in varieties.35 to 50

ERANTHEMUM tuberculatum. A pretty, profuse blooming plant, with white flowers nearly 1½ inches across. 25

EUCHARIS Amazonica. A fine fragrant winter blooming plant for florists, per doz. \$2 50 25

FICUS elastica. The well known Rubber Tree.
Good plants. 50
Fine “ 75

F. elastica variegata. An elegant variegated variety of the above. Small plants. . 2 50
Large good plants. 5 00

GREVILLEA robusta. (Silk Oak.) A very pretty decorative plant with graceful foliage.35 to 50

ISOLEPIS gracilis. A pretty grassy plant useful for edgings, baskets, etc. . . . 10

IMANTOPHYLLUM miniatum. (*clivia nobilis*). A fine flowering plant, producing orange red flowers freely throughout winter.

Fine plants. 1 00

Strong “ 2 00

LINUM trigynum. An invaluable house plant, producing a profusion of well opened bell-shaped yellow flowers. 25

MARANTA Zebrina. One of the oldest and most useful of this class of plants. . . .25 to 50

M. in varieties. Fine plants.35 to 75

PHRYNIUM variegatum. An elegant plant for decorative purposes, green and ivory white foliage. 50

PANDANUS Utilis. Screw Pine. A very graceful plant, succeeds well in dwellings.

Four inch pot plants. 35

P. Veitchii. Similar to the above in growth, with elegant green and white foliage.

Five inch pot plants. 50

Very large fine specimens. \$5 to 8 00

PANAX Victoriae. A distinct and graceful plant, with lovely and elegant variegated green and white foliage.35 to 50

PHYLLOTAENIUM Lindenii. Of robust habit, light glossy green leaves, finely marked white.75c to 1 00

SARACENIAS. Curious herbaceous perennials, half hardy, remarkable for their pitcher shaped leaves.

S. Flava. Pale yellow pitchers and yellow flowers.50c to 1 00

S. Drumondi. Beautiful colored tall upright pitchers, variegated red and white. . . \$1 to 3 00

ZAMIA integrifolia. A fine plant for decorative purposes, similar to *Cycas revoluta*.
Nice plants 75
Strong “ 1 50
Extra strong plants. 3 50

Orchids.

Exactly according to our prediction, Orchids have taken a real hold upon the public favor, and there is no florist who can afford to be without them. Not only are they sold to the customer, but they act as an advertisement, and a two dollar Orchid plant in flower in a store or greenhouse will attract more attention than a two-hundred dollar painted sign. Besides being profitable, they will grow into valuable specimens, and thus in growing them alone they will give better returns for the money invested than any other class of plants. The six best Orchids we can recommend to anyone are *Cattleya Trianae*, *Cypripedium insigne*, *Cœlogyne cristata*, *Cattleya Percivaliana*, *Cypripedium Harrisianum* and *Lycaste Skinnerii*. The above varieties are indispensable, and below we give those that are generally grown for cut flowers, and which are found to be the most profitable.

	Each.	Per doz.		Each.	Per doz.
CALANTHE vestita. A very useful terrestrial orchid, producing its pure white flowers in December, January and February.....	\$0 75	\$7 50	D. formosum giganteum. A fine, large white, winter-flowering Dendrobium; the blooms are handsome and showy.....	\$1 50	\$15 00
C. Dowiana. Undoubtedly the finest <i>Cattleya</i> grown, flowering during the late summer and early autumn. The flowers are of a nankeen yellow color, lip rich purple, beautifully streaked with lines of gold.....	2 50	25 00	D. Nobile. One of the first and also one of the best orchids in cultivation. The flowers, which are white, tinged with pink, and with a lip blotched with crimson, are freely produced on straight stems in February and March. This is a standard variety.	1 00	10 00
C. intermedia. Free-flowering species, producing a fine spike of soft rose flowers, lip purple, during May, June and July.....	1 50	15 00	DENDROBIUM thyrsoiflorum. — The white and yellow flowers of this fine species are produced in large, dense clusters in March and April..	1 50	15 00
C. Mendelli. This fine species produces its pale pink flowers from May to July; the lip is of a rich magenta.	1 75	17 50	D. Wardianum. The pseudo-bulbs of this species are covered with white flowers, tipped with bright magenta and with a bright orange throat, during the winter months.....	1 50	15 00
C. Mossiæ. This grand orchid blooms from May to July. The large flowers vary from blush and lilac to deep rose.....	1 50	15 00	Strong plants.....	2 50	25 00
C. Percivaliana. Fine species, flowering from November to February. The flowers are deep rosy purple, with rich colored lip of deep crimson and golden yellow.	1 75	17 50	LÆLIA albidia. This is a very useful species, producing a long spike, bearing five to twelve white flowers, tinged with pink, from November to January.....	75	7 50
C. speciosissima. Flowering season of this fine species is during the winter months. The flowers are very large of blush and rose colors.....	2 50	25 00	L. Anceps. This well known species produces three to five large rose-colored flowers on a long stem, from November to January.....	75	7 50
CATTELEYA Trianae. This is the richest and most useful orchid in cultivation, flowering as it does from December to April, just when flowers are in great demand. The colors vary from pure white to blush, the lip having a bright crimson purple spot and yellow throat. Having been fortunate in importing a fine lot from our collector, Mr. John E. Lager, we offer them at the following low prices, all being finely established.....	\$95 per 100..	1 25 12 50	Strong plants.....	1 50	15 00
Larger plants.....	\$195 “	2 50 25 00	L. Arnoldiana. A very useful orchid of recent introduction; the flowers, which are produced during October, November and December, are of deep rose, five to fifteen being borne on a spike.....	2 00	15 00
CŒLOGYNE cristata. One of the finest winter-flowering orchids. Sprays of five to seven large white flowers are produced from January to March.....	1 00	10 00	L. purpurata. A grand species producing from four to six large white flowers with purple lip, from May to July.....	2 00	20 00
Strong plants.....	2 50	25 00	LYCASTE aromatica As many as eighteen yellow flowers are produced from one bulb during late winter and early spring.....	75	7 50
DENDROBIUM chryso toxum. A grand species, producing spikes of fine yellow flowers during the winter months.....	1 50	15 00	L. Skinneri. One of the most profuse flowering orchids in cultivation; as many as twelve large flowers sometimes being produced by one bulb; the flowers vary in shade from white to rose color, with lip blotched with rose or crimson; blooms same time as <i>L. aromatica</i>	1 00	10 00
			Strong plants.....	2 50	25 00



CATTLEYA TRIANAÆ.

See Page 54.



VIEW OF ONE OF OUR CYPRIPEDIUM HOUSES.

See Page 57.

ORCHIDS—Continued.

	Each	Per doz.
ODONTOGLOSSUM citrosum. This species sends out a long, drooping spike of beautiful white or rose colored, lemon-scented flowers in April and May.....	\$1 00	\$10 00
O. crispum. Acknowledged to be one of the finest orchids in cultivation; long arching spikes of white flowers are produced from January to April.....	1 00	10 00
Strong plants.....	2 50	25 00
O. Grande. Known as the "Baby Orchid." Cinnamon-brown and yellow flowers are produced from September to December.....	1 00	10 00
O. pulchellum. A species of easy culture, producing very sweet-scented white flowers in the spring.....	75	7 50
O. Rossi majus. A very useful species, flowering during January, February and March.....	75	7 50
Strong plants.....	1 50	15 00
ONCIDIUM incurvum. Produces a large spike of pure white, marked with lilac and brown; flowers from May to July.....	1 50	15 00
O. ornithorynchum. A free-flowering species, producing its rose-purple flowers, with a perfume like the heliotrope, during the spring months.	1 75	17 50

	Each	Per doz.
O. papilio. Known as the "Butterfly Orchid." The plant blooms nearly all the year round.....	\$1 75	\$17 50
O. tigrinum. A very showy sweet-scented species, producing spikes of yellow and brown flowers in the autumn.....	1 50	15 00
O. unguiculatum. An easy growing species, producing large spikes of yellow and brown flowers in fall.....	1 00	10 00
PHAJUS grandifolius. One of the oldest orchids. The flowers are white on the outside and reddish-brown inside. Produce its flowers on a long stem from February to April.....	1 50	15 00
PHALÆNOPSIS amabilis. One of the best orchids known for cut flowers. The large spikes of white are produced during the winter months.....	2 75	27 50
P. grandiflora. Another very useful species, producing its white flowers the same time as <i>P. amabilis</i>	2 00	20 00
P. Schilleriana. The flowers of a fine rosy color, are produced at the same time as <i>P. amabilis</i>	4 00	40 00
TRICOPILIA suavis. A very fine species, producing large white flowers, spotted with crimson, in the spring months.....	1 50	15 00

Cypripediums.

This very large class of orchids has attracted more attention than any other, and, therefore, we have put them under a separate heading. It is a well-known fact that Cypripediums are the easiest of all the Orchids to grow, and they last the longest in perfection. We had flowers last in perfect order for over four months on the plants, while when cut they last three to five weeks with a little care. The colors are rich and pleasing and combine well with roses and ferns, in fact with any other flowers. We have the largest, finest and most varied stock of these plants in the world, and recommend the following varieties to all Florists.

	Each	Per doz.
CYPRIPEDIUM Ashburtoniæ. A very free-growing hybrid, generally flowering twice a year.....	\$1 75	\$17 50
C. Barbatum superbum. This popular species produces its flowers from April to July.....	1 50	15 00
C. Boxallii. This very fine variety produces its flowers, which have a shiny appearance, as if varnished, from December to January.....	1 50	15 00
C. Dauthieri. This is another free-growing and free-flowering hybrid; blooms in the autumn.....	2 50	25 00
C. Dominianum. This fine hybrid produces three to five flowers on a long stem in the autumn; the flowers are very useful for filling vases.....	1 75	17 50
C. Harrisianum. A grand hybrid, producing flowers twice, or even three times a year.....	1 50	15 00
C. Hirsutissimum. A very fine species, flowering during the Spring months.....	1 75	17 50
C. Insigne. The best known of all orchids; flowers are produced from November to March, and last over twelve weeks on the plant, or three to four weeks when cut.....	50	5 00

	Each	Per doz.
C. Insigne album marginatum. A very fine variety of the common <i>insigne</i> , and flowering at the same time.....	\$1 75	\$17 50
C. Insigne maculatum. Stronger in growth, and with better flowers than the type.....	1 50	15 00
C. Lawrenceanum. A grand species with beautiful variegated foliage; the flowers, which are on long stems are generally produced twice a year.....	75	7 50
C. Longifolium. A free-growing species, which produces flowers on long stems, succeeding each other from May to July.....	1 75	17 50
C. Roezlii. The habit and growth same as <i>C. longiflorum</i> ; varies only in the color of the flower.....	1 75	17 50
C. Sedeni. A fine hybrid, producing a long stem, on which large, pink flowers succeed each other from October to May.....	1 50	15 00
C. Venustum. A fine species, with beautiful variegated leaves; the flowers appear during the winter months.....	75	7 50
C. Villosum. Another fine species with shiny flowers, which are produced from January to April.....	1 50	15 00

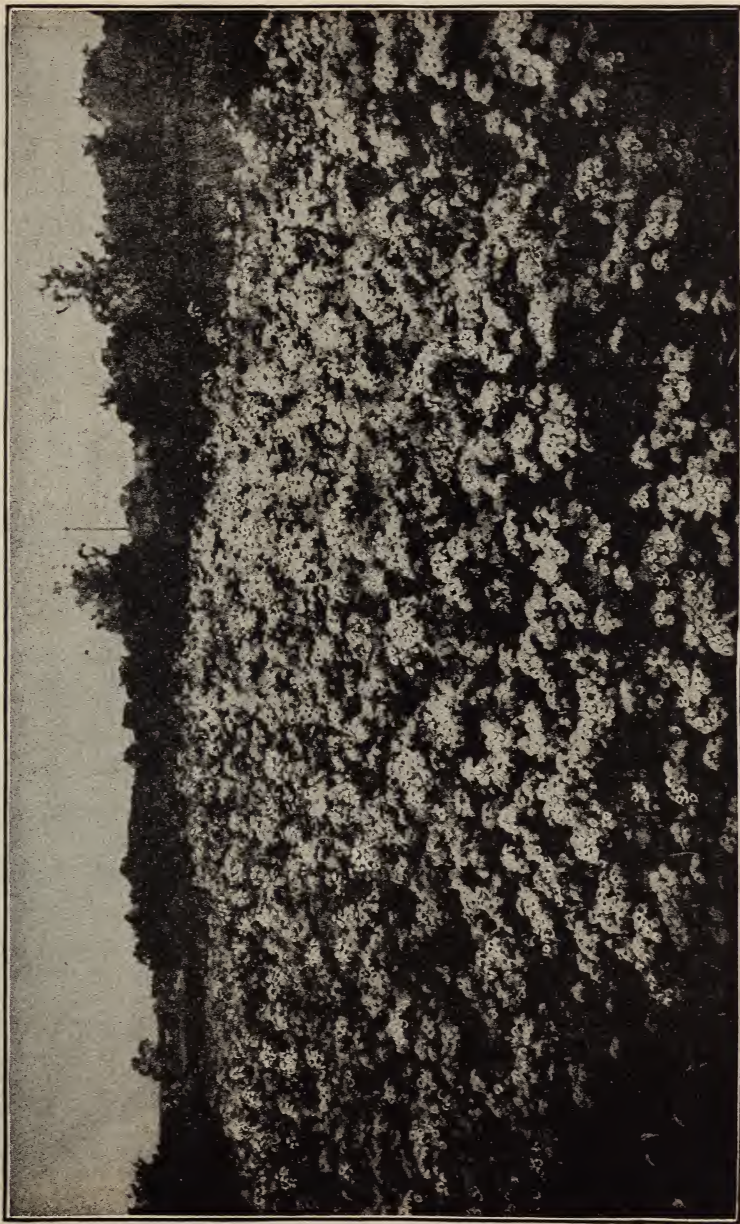
Hardy Perennials or Herbaceous Plants.

We make a specialty of hardy herbaceous plants, and devote acres of land to their culture. During the past year or two there has been a greatly increased demand for plants of this class, and there is much to be said in praise of them. With a good selection the garden is gay with their blossoms from the time snow leaves the ground in spring, until late autumn. We are continually adding fine novelties, both from our special collectors and from other sources.

Many species and varieties have proved excellent for forcing, and others that have not as yet been tried, will undoubtedly prove useful in the same direction. For florists and others purchasing plants to supply cut flowers, a large number of plants of few varieties are preferable to a few plants each of many varieties.

We send out none but healthy stock, true to name, and sure to give satisfaction. A personal visit to our nursery at any time during the summer is sure to be of interest.

	Per doz.	Per 100		Per doz.	Per 100
ACHILLEA "The Pearl." The flowers, which are borne upon erect foot-stalks, are of the finest white, and closely resemble a pompon chrysanthemum. Succeeds anywhere, and flowers almost the whole season. A grand acquisition for cutting.....	\$1 00	\$5 00	A. Japonica alba. Flowers of the purest white, in late fall. A grand flower for cutting.....	\$1 00	\$6 00
A. multifolium rubrum. Very useful, producing heads of a deep lake rose color.....	1 50	9 00	A. Japonica elegans. Similar to the type, but with broader leaves and pale rose-colored flowers, often 3 inches across.....	1 50	10 00
A. tomentosa. Flower heads flat, of an unusually good yellow, and remaining a long time in perfection; excellent for spring cutting....	1 50	9 00	A. Pennsylvanica. Flowers pure white, on long, slender foot-stalks, produced in great profusion in early summer. A bright plant in borders, and excellent for cutting.....	1 00	6 00
AGROSTEMMA coronaria. An erect branching plant, with handsome silvery foliage, covered in summer with bright pink flowers. A valuable border plant.....	1 50	10 00	A. sylvestris. Snowdrop wind-flower. Flowers pure satin white, fragrant, slightly drooping.....	1 00	6 00
A. coronaria alba. A variety of the above, with white flowers.....	1 50	10 00	AQUILEGIA Canadensis. Flowers scarlet and yellow, on slender branching stems. An early spring flower, of excellent habit.....	1 00	6 00
AJUGA alpina. A splendid bedding plant, the handsome foliage making a fine mat throughout the year; covered in spring with spikes of white flowers.....	1 25	8 00	A. chrysantha. Flowers beautiful golden yellow. One of the finest of hardy perennials for the border....	2 50	25 00
A. Genevensis. Taller growing than the last, bearing spikes of bright blue flowers in spring.....	1 25	8 00	A. vulgaris alba. A stately plant, the nodding flowers borne on slender, erect stems. Showy in borders, and fine for early cutting.....	1 25	8 00
A. pyramidalis. An erect growing species, with spikes of blue and purple flowers in May and June ..	1 50	9 00	A. hybrids. All colors mixed.....	1 25	8 00
A. pyramidalis alba. A very pretty low-growing plant having white flowers produced in whorls during May and June. Height 6 inches.....	1 50	9 00	ARABIS albida. An excellent plant for spring bedding, the dense tufts of white flowers appearing in April.....	1 00	6 00
A. reptans. The creeping habit of this plant makes it valuable for carpeting; flowers in May.....	1 00	6 00	ARTEMISIA pontica. A good bedding plant, with silvery leaves and yellow flowers. Valuable for its aromatic fragrance. Excellent for florists to sell in pots.....	1 00	6 00
A. reptans alba. A variety of the above, with white flowers.....	1 50	9 00	ASCLEPIAS tuberosa. One of the best border plants. Flowers a most brilliant orange, lasting long in perfection. Height 2 feet.....	1 25	8 00
ALYSSUM saxatile compactum. A good plant for early spring bedding, forming compact tufts bearing yellow flowers.....	1 50	9 00	ASTER Douglasii. Flowers purple, in August, on branching stems.	1 00	6 00
ANEMONE Japonica. One of the most valuable fall flowering perennials, producing showy rose-colored flowers on long slender stems; useful for cutting or the open border...	1 00	6 00	A. Novæ Angliæ. One of the best asters, of a tall, robust habit, bearing purple flowers in terminal clusters in September.....	1 25	8 00
			ASTER ptarmicoides. The finest white flowering species, blooming in late fall; excellent for cutting...	1 50	10 00



BED OF ACHILLEA "THE PEARL."

See Page 58.



ANEMONE JAPONICA ALBA.

See Page 58.

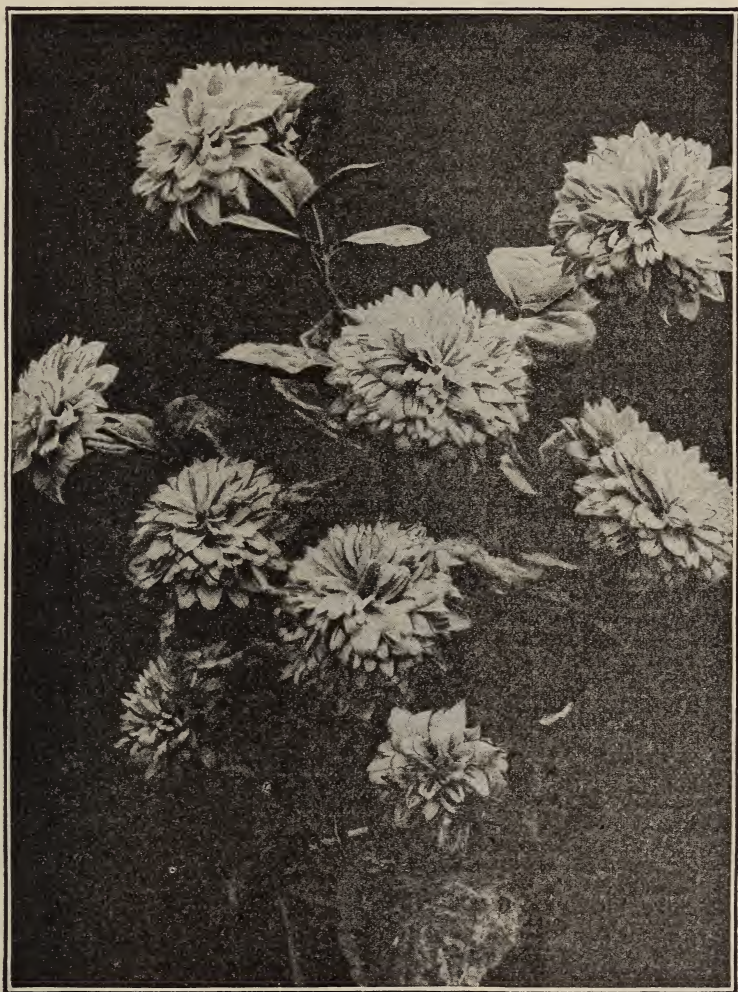
HARDY PERENNIALS—Continued.

	Per doz.	Per 100
A. Simplex. Flowers pale blue; stems three to six feet high, sparingly branching.....	\$1 00	\$6 00
A. in many Varieties. The brilliancy of these flowers and their late time of blooming make them especially valuable for cutting; they range through a great variety of shades and are in bloom through September and October.....	1 25	8 00
AUBRETIA græca. A lovely little spring blooming plant for rock works, etc., with light purple flowers forming a dense mass.....	1 00	6 00
BAMBUSA Metake. A handsome tall growing bamboo grass, perfectly hardy; four to six feet high.....	2 00	12 00
BAPTISIA australis. The finest tall blue, flowering perennial. The foliage is handsome and the dark blue flowers hang in graceful racemes.....	1 50	10 00
BERBERIS aquifolium. A low shrub, three to six feet high, with compound, spiny toothed leaves, and yellow flowers in crowded racemes, in spring.....	2 00	15 00
BOLTONIA asteroides. Flowers light salmon colored, star shaped, disposed in a terminal panicle; blooms in August.....	1 25	8 00
BUXUS sempervirens. Common Box. A low growing evergreen shrub useful for borders to walks, etc.....	1 50	9 00
CALLIRHOE involucrata. Flowers crimson, nearly two inches across, borne in a loose panicle in summer.....	1 50	10 00
CALTHA palustris. The well known Marsh Marigold, which bears its bright yellow flowers in early spring. Succeeds best in a damp place.....	1 00	6 00
CAMPANULA Carpathica. A low growing Campanula; large showy blue flowers borne all summer.....	1 50	10 00
C. Carpathica alba. A very fine white variety.....	2 00	12 00
C. lactiflora. Flowers milky white, usually borne on three colored peduncles; fine for the border, two to four feet.....	1 50	10 00
C. persicæfolia. A fine border plant, two or three feet high, with large flowers of showy blue. Excellent for cut-flowers.....	1 50	10 00
C. persicæfolia alba. Similar to the preceding, but with white flowers... ..	1 50	10 00
C. persicæfolia alba plena. Very beautiful variety; double bell-shaped flowers of lasting quality when cut.....	2 00	12 00
CARDAMINE pratensis plena. A very pretty purple flower, rising to over a foot in height.....	1 50	9 00
CASSIA Marylandica. A low growing shrub with pinnate leaves and yellow flowers in racemes.....	1 50	10 00
CLEMATIS. See page 69 of this catalogue.		

	Per doz.	Per 100
COREOPSIS lanceolata. This, without doubt, one of the finest hardy perennials. The flowers are produced in the greatest profusion from June until frost; the branching wiry stems make it especially suitable for cutting.....	\$1 25	\$8 00
C. rosea. Flowers with rose red rays and yellow disc.....	1 00	6 00
DELPHINIUM sinense. A low growing branching species, with fine showy flowers, white, light and dark blue, in close racemes. A plant of very elegant habit, and fine for cutting.....	1 75	12 00
D. mixed Varieties. Very useful and handsome border plants. The plants are of stately habit and make excellent centers for beds. The flower spikes hold a long time when cut.....	1 50	9 00
D., Double mixed Varieties.....	1 50	10 00
DIANTHUS barbatus. Very effective and showy border plant, and fine for cutting.....	1 25	8 00
D. deltoides. Flowers solitary, rose colored, borne in summer on stems six to nine inches high.....	1 25	8 00
D. Hispanicus. Large flowers of bright crimson, borne all the season. Excellent for cutting.....	1 25	8 00
D. plumarius plenus albus. White, double, the petals with jagged and toothed margins; sweet scented....	1 25	8 00
D. plumarius plenus roseus. Similar to the preceding, but the flowers are purple or pink.....	1 25	8 00
DICENTRA eximia. Drooping flowers of reddish purple borne in compound racemes in late spring and early summer.....	1 25	8 00
D. spectabilis. The well known Bleeding Heart. An old and very ornamental border plant.	1 25	8 00
DIGITALIS gloxinoides. A well known ornamental plant; fine for massing or cutting.....	1 50	9 00
D. gloxinoides alba. A white variety	1 75	10 00
D. purpurea alba. A fine white variety of the common foxglove. Very useful for planting in borders.....	1 50	9 00
DORONICUM plantagineum excelsum. Very fine for winter forcing; height, three to four feet; flower heads yellow, four to five inches across. In the way of <i>D. Caucasicum</i> , but much finer.....	2 00	15 00
ECHINACEA purpurea. A very showy plant, the bright rosy purple flowers succeeding each other for over two months. Useful for cutting	1 50	9 00
ERYNGIUM amethystinum. Flowers amethyst purple, in globose heads. Height, one to two feet....	1 50	9 00
ELYMUS glaucus. An ornamental grass, forming tall clumps covered with arching glaucous blue leaves..	2 00	15 00

HARDY PERENNIALS—Continued.

	Per doz.	Per 100		Per doz.	Per 100
ERIGERON auranticus. A fine plant with bright orange colored aster-like flowers, two inches across. A good flower for cutting purposes.	\$1 50	\$8 00	H. orgyalis. Flower heads yellow, rather small, but very numerous in a large panicle; one of the best autumn flowering plants.	\$2 50	\$18 00
E. glaucus. A fine border plant, growing two feet in height and producing numbers of lilac-rose rayed heads of flowers.	2 00	12 00	H. rigidus semiplenus. Semi-double disc and rays, rich dark yellow; one of the best for cutting.	2 00	12 00
ERYSIMUM pulchellum. A prostrate plant with numerous pale yellow flowers in early summer.	1 75	12 00	HELIOPSIS laevis. A valuable plant, blooming steadily from midsummer to frost; flowers large and borne in great profusion; invaluable for cutting.	1 50	9 00
EULALIA Japonica variegata. A handsome grass, growing five to eight feet in height, the green leaves marked with white bands.	2 00	15 00	HELLEBORUS niger. This species is very valuable for forcing in winter; when covered with a frame the beautiful white flowers may be had in bloom at Christmas.	2 00	12 00
E. Japonica zebрина. A very handsome form with yellow bars running transversely across the leaves.	2 50	18 00	H. maximus. Larger flowered than the preceding; a free grower and excellent for cutting.	3 00	22 00
EUONYMUS radicans. A handsome shrubby foliage plant, well suited for trailing over rocks, stumps, etc. Very free growing and useful.	1 50	10 00	HEMEROCALLIS flava. A beautiful plant, admirable for forcing; the sweet scented lemon-yellow flowers succeed each other for some time.	1 25	8 00
E. radicans variegata. A variety of the preceding with fine variegated foliage. When trimmed it makes a good stiff border.	1 50	10 00	H. fulva. Flowers a tawny color, borne all summer.	1 00	6 00
EUPHORBIA corollata. Flowers white at the end of the branches; plant with a milky juice.	1 50	10 00	HEPATICANGULOSA. An exceedingly bright colored species, the large deep blue flowers appearing in early spring before the leaves.	2 00	12 00
FUNKIA cordata. Flowers white; leaves broad, pale green.	1 25	8 00	HIBISCUS militaris. A tall growing border plant, with handsome foliage and large pinkish white flowers in early summer.	2 00	12 00
F. cordata variegata. A variety with the leaves marked with white.	1 50	10 00	HOLLYHOCKS. Of this well known and noble plant we have an immense stock, grown from the finest double strain of seed, which we are pleased to offer, but do not guarantee that each plant will come true to color or double, though at the same time fully 95 per cent will do this. Assorted colors.	2 00	12 00
F. lanceolata. Flowers white, the leaves longer and narrower than in the preceding variety.	1 00	6 00	IBERIS semperflorens. The very best of the hardy candytufts. Flowers white, large, fragrant; good bloomer.	1 50	10 00
F. lanceolata variegata. A variety with the leaves marked with white.	1 25	8 00	IRIS cristata. An exceedingly pretty dwarf species, well adapted for edgings; flowers pale blue with white markings.	1 00	6 00
F. undulata variegata. A very fine border plant with crinkly foliage, variegated with creamy white. Useful for edging.	1 50	10 00	I. cuprea. Flowers dull yellow, borne on stems often three feet high, in April and May.	2 00	15 00
GAILLARDIA grandiflora. Flowers yellow with annular ring of crimson. Are all summer bloomers, excellent for cutting.	1 50	10 00	I. flavescens. Flowers lemon-yellow; a fine variety for borders, its flower stalks, two to three feet high, being produced in May.	1 50	10 00
GLECHOMA hederacea variegata. A good plant for hanging baskets. The leaves are prettily variegated; the habit of the plant is trailing.	1 00	6 00	I. Germanica, varieties mixed. A highly ornamental species; the stately habit, the brilliancy and variety of the shades and markings make it invaluable for ornamental or cutting purposes.	0 50	2 50
GERANIUM platypetalum. A very showy border plant, the deep violet flowers being borne in great profusion. Excellent for cutting in early summer.	1 50	9 00	I. Kämpferii Varieties. Mixed. The flowers of this remarkable species are broad and flat and present great variety of color. Height 4 feet.	1 50	6 00
HELIANTHUS Maximilianii. A large growing and very free flowering species remaining in bloom till late autumn; a valuable species for cutting purposes.	2 00	12 00			
H. multiflorus plenus. An autumn bloomer with large double flowers; a valuable species for cutting.	1 50	8 00			
H. multiflorus grandiplenus. An improved variety of the last, with very showy flowers not unlike a yellow chrysanthemum, 4 to 5 in. across.	2 00	12 00			



HELIANTHUS MULTIFLORUS PLENUS.

See Page 62



HELIANTHUS MAXIMILIANII.

See Page 63.

HARDY PERENNIALS—Continued.

	Per doz.	Per 100
<i>Iris nudicaule.</i> A short, stout growing variety with violet purple flowers.	\$1 50	\$10 00
I. pseudo-acorus. Flowers large, bright yellow, produced in early Spring. Stem two to three feet high	1 50	10 00
I. pseudo-acorus variegata. A variety of the preceding with leaves marked with lighter shade	2 00	15 00
I. setosa. Flowers clustered, bright lilac; stems two to three feet high branched	1 50	10 00
I. Sibirica sanguinea. A fine species with narrow leaves and flowers of a very fine dark blue; one of the best of all the Irises	1 50	10 00
LEUCANTHEMUM lacustre. Large, daisy-like yellow flowers, produced in autumn	1 25	8 00
LIATRIS spicata. A very showy plant with erect stems and dense spikes of purple flowers in late summer	1 25	8 00
L. scariosa. Flower heads one inch across, bright purple, in tall spikes	1 25	8 00
LOTUS corniculatus. Flowers bright yellow, fading to orange, produced in late summer and autumn; a very handsome plant for growing on rock-work	1 50	8 00
LYCHNIS alpina. A dwarf plant with heads of bright pink flowers in spring and summer; good for low borders	2 00	12 00
L. Chalcedonica. A brilliantly colored tall perennial; the flower-heads are bright scarlet and are excellent for cutting	1 50	10 00
L. viscaria splendens. Flowers deep red, stems growing about one foot high	1 50	8 00
LYSIMACHIA Nummularia. An elegant creeping plant with a profusion of bright yellow flowers rising from a carpet of green; will grow where grass cannot	1 00	6 00
MONARDA didyma. A sweet-scented herb with crimson flower-heads. Excellent for borders and for cutting. Is in flower for at least three months	1 25	8 00
MYOSOTIS palustris semperflorens. An improved variety of the well-known forget-me-not. An excellent plant for low borders, as it flowers the whole season	1 50	8 00
M. elegantissima. A fine spring flowering plant of compact habit. Excellent for forcing and spring bedding	1 00	6 00
CENOTHERA fruticosa. Flowers deep yellow, borne on spicate racemes from June to September	1 50	8 00
OPUNTIA Rafinesquii. A hardy cactus with broad, evergreen leaves and yellow flowers. Stems and leaves covered with spines	1 50	10 00
O. vulgaris. Similar to the last but not so spiny	1 50	10 00

	Per doz.	Per 100
PACHYSANDRA terminalis. An excellent bedding plant, increasing rapidly and making a bright evergreen carpet	\$3 00	\$18 00
PÆONIA albiflora, in varieties. Mixed. Fine varieties of this showy perennial, which we grow in large quantities	2 50	18 00
P. tenuifolia. One of the finest species; flowers large, bright red, with fern-like foliage. Very early, and excellent for forcing	2 25	17 50
Pæonias. Strong clumps for forcing; assorted; best six varieties, including whites	Each 75 cts.	7 50 60 00
Extra strong clumps	Each \$1.	10 00 80 00
PAPAVER alpinum. Similar to <i>P. nudicaule</i> , but more dwarf in habit. The flowers are white, yellow and rose tinted	2 00	15 00
P. bracteatum. A very showy flower; blood-red, with a black center	2 00	12 00
P. involucreatum maximum. A fine plant of medium height, bearing red flowers with dark spots at the base of the petals	2 00	12 00
P. nudicaule. A very pretty poppy, destined to become a universal favorite. The foliage is fern-like and the graceful stems bear yellow, white and saffron flowers. Very useful for cutting purposes	1 50	10 00
P. orientale. A tall growing poppy with immense flowers of bright scarlet, with a dark purple spot at the base of each petal	2 00	12 00
P. orientale semi-plenum. A fine variety with an increased number of petals. A great acquisition	2 50	15 00
P. pilosum. Flowers large, bright scarlet, with a white spot at the base of the petals	2 00	12 00
PARDANTHUS sinensis. A fine border plant with orange colored flowers in August and September	1 00	6 00
PASSIFLORA incarnata. A fine hardy Passion Flower, bearing blue flowers in spring. A fine climber	1 25	8 00
PENTSTEMON diffusus. A valuable species, with large blue flowers. The best of the hardy pentstemons	2 00	12 00
P. digitalis. A very ornamental plant, bearing tall spikes of white flowers in summer	2 00	12 00
PENTSTEMON pubescens. A smaller species, with spikes of lilac flowers	\$1 50	\$8 00
PHALARIS arundinaces variegata. A very ornamental grass with striped leaves. Useful for massing or cutting	1 00	6 00
PHLOX amœna. Unsurpassed for spring bedding, the foliage being entirely hidden under the profusion of bright pink bloom	1 00	6 00
P. Carolina. A beautiful pink-purple flowered species, bearing large clusters of flowers nearly all summer. Valuable for cutting	1 50	8 00

HARDY PERENNIALS—Continued.

	Per doz.	Per 100		Per doz.	Per 100
<i>P. paniculata</i> , in varieties. Undoubtedly one of the most showy of hardy perennials. For display of bloom or for cutting, nothing is better than a selection from this handsome section.....	\$1 50	\$8 00	<i>R. speciosa</i> . A fine plant for cutting or massing. Flowers with orange colored rays and a black disc. Height, 2 to 3 feet.....	\$1 50	\$9 00
<i>P. paniculata</i> , "The Pearl." A pure white dwarf variety. The flowers do not shatter, and its compact heads are fine for cutting; a grand novelty, and bound to find favor with the florists.....	1 50	10 00	<i>R. sub-tomentosa</i> . A tall species, with handsome broad leaves and an abundance of showy yellow flowers all through the summer.....	2 00	12 00
<i>P. subulata</i> . A prostrate species, making an excellent spring bedder. Flowers a pale pink, from moss-like foliage.....	1 00	6 00	RUPELLIA ciliosa . A pretty prostrate plant, effective in low borders, producing abundant lilac flowers in late summer.....	1 50	10 00
PHYSOSTEGIA Virginica . A handsome border plant, with one-sided racemes of purple flowers, produced all summer.....	1 00	6 00	SALVIA pratensis . Flowers bright blue, about an inch long; borne on spikes in summer.....	2 00	12 00
POLEMONIUM cœruleum . A very useful border plant. Flowers on tall spikes in early spring; in color a good blue, showing the yellow stamens.....	1 50	10 00	SANGUINARIA Canadensis . The pretty white poppy-like flowers appear in earliest spring before the leaves. Useful for borders.....	1 00	6 00
<i>P. reptans</i> . A dwarf species, forming tufts of fine foliage, covered in early spring with showy blue flowers....	1 50	8 00	SCHIZOSTYLIS coccinea . A late fall flowering perennial, with blood-red flowers on an erect spike.	25	1 50
POTENTILLA, double hybrids . Several varieties with red and yellow flowers; fine for borders or rock-work.....	1 50	8 00	SEDUM Fabarium . With the habit of <i>S. spectabile</i> , but with dark colored leaves; a fine plant.....	2 00	12 00
<i>P. fruticosa</i> . A dwarf growing shrub which bears bright yellow flowers in early summer.....	1 50	10 00	<i>S. spectabile</i> . A very fine plant for borders and edging; leaves broad and showy. Flowers produced in September in rosy-purple clusters. Very fine for pots.....	1 50	8 00
PRIMULA acaulis, in varieties . The flowers, yellow, pink or white, are borne singly in early spring....	1 75	12 00	<i>S. spectabile album</i> . White variety of the preceding.....	1 75	10 00
elatior, in varieties . Flowers vary from yellow to deep maroon. Very suitable for planting in rock-work or borders.....	1 75	12 00	SILPHIUM perfoliatum . A large leaved, stout growing composite, with large clear lemon-yellow flowers. The plant is covered with blossoms from the middle of summer through the season.....	\$2 00	\$12 00
<i>P. Japonica</i> . Flowers of various colors, pink, white, lilac, dark red, etc. Scapes one to two feet high.....	2 50	18 00	SOLIDAGO, in several varieties . Very showy for massing or cutting in the fall.....	1 50	8 00
<i>P. Sieboldii, in varieties</i> . A grand Japanese hardy primrose varying in color from white to deep rose and purple.....	2 50	18 00	SPIRÆA aruncus . Flowers whitish, in many slender spikes, disposed in a compound panicle.....	2 00	15 00
PYRETHRUM roseum, named varieties . This is an excellent plant for cutting purposes. The shades of color run from white to crimson, and the flowers are both double and single.	2 00	15 00	<i>S. filipendula flore pleno</i> . Flowers, white, borne in loose cymes in June and July.....	1 50	10 00
Single varieties.....	2 00	15 00	<i>S. Japonica</i> . A well-known and favorite plant for forcing in March. Strong clumps.....	65	5 50
Double varieties (to color, including white).....	2 50	18 00	<i>S. Japonica aurea variegata</i> . A fine variety, with yellow markings on the leaves; very effective.....	2 00	12 00
<i>P. uliginosum</i> . A grand plant for fall cutting, growing 4 feet high and covered with a profusion of large white flowers. (See cut page 7).....	2 00	12 00	<i>S. Japonica grandiflora</i> . An excellent and undoubted improvement on the old form. Very lasting, and of a fleecy whiteness; invaluable for cutting.....	1 75	12 00
RUDBECKIA laciniata . A tall growing species with large, showy flowers. Excellent for tall borders and for cutting.....	1 50	10 00	<i>S. Japonica purpurea</i> . A variety with purplish leaves; a very striking plant.....	2 00	12 00
<i>R. maxima</i> . A tall growing species, with bright yellow flowers.....	2 00	12 00	<i>S. palmata</i> . A beautiful species, with sweet-scented crimson flowers. An exceedingly useful plant for cutting.....	1 50	10 00
			<i>S. ulmaria</i> . Flowers white, in compound cymes in July and August....	1 50	8 00



PHLOX "THE PEARL."

See Page 66.



OUR SUPERB STRAIN OF TUBEROUS ROOTED BEGONIAS.
Seed, Page 5. Tubers, Page 53.

HARDY PERENNIALS—Continued.

	Per doz.	Per 100
STENACTIS speciosa. A very showy plant, producing numerous blue, aster-like flowers in summer. Height, 1½ feet.....	\$1 50	\$10 00
STOKESIA cyanea. A fine, late-flowering plant, with large and showy flowers of a beautiful blue color....	1 75	12 00
TRADESCANTIA pilosa. Similar to the next, but with somewhat broader leaves and darker flowers...	1 25	8 00
T. Virginica. Flowers an inch in diameter; brilliant purple, borne in a terminal and axillary cymes; blooming from March to May.....	2 00	15 00
T. Virginica alba. A fine variety, with pure white flowers.....	1 00	10 00
TRILLIUM grandiflorum. A very handsome lily-like spring flower, the large, white blossoms rising from three dark green leaves. Fine for forcing and cutting.....	75	6 00
TUNICA Saxifraga. Flowers pink, appearing in July. Excellent for planting on rock work.....	2 00	15 00

	Per doz.	Per 100
VERONICA rupestris. Fine prostrate species, with blue flowers; unexcelled for edging or covering of rocks.....	\$1 00	\$6 00
V. spicata. A showy plant, bearing handsome spikes of blue flowers in summer.	1 00	6 00
VINCA minor. An excellent trailing plant for rock-work, producing purple-blue flowers in early spring..	1 00	6 00
V. minor alba. A variety with white flowers.....	1 25	8 00
V. minor alba plena. With double white flowers.....	1 25	8 00
V. minor purpurea plena. With double purple-blue flowers.....	1 25	8 00
V. minor folia variegata. A variety with variegated leaves.....	1	8 00
VIOLA cucullata. The variegated form of the common violet; flowers large, white and blue....	1 00	6 00
V. cucullata alba. Pure white variety; fine for edging.....	1 25	8 00

Clematis.

We have a fine stock of this most beautiful of climbing plants. The many colors which are now produced by the various hybrids, white, blue, purple, scarlet, in many shades, and the large size of the flowers, together with its hardiness, climbing habit and free-blooming, make them universal favorites.

Any of the following varieties, strong plants, our selection, **35 cents each**; customer's selection, **40 cents each**.

Clematis Jackmanni Varieties.

Anderson Henryii. White.
Countess of Lovelace. Bluish lilac, double.
Duke of Edinburgh. Rich purple, large.
Gem. Deep lavender, very fine.
Jackmanni. The best known variety, with flowers of a rich purple, with green stamens.
Jackmanni superba. Deeper and larger than Jackmanni.

Gypsy Queen. Velvet purple.
Lord Neville. Rich dark blue.
Rubro Violacea. Maroon shaded purple.
Sir Garnet Wolesley. Bluish shaded bronze.
Star of India. Violet purple, with rosy band.
William Kennet. Deep purple, changing to lavender.

Special Imported Stock for Florists

We would especially call the attention of the trade throughout the country to the fact that we are one of the largest importing houses in this country for the following for Fall delivery:

Azaleas. Indica Varieties.

These we import in all sizes, and of the very best selected New York forcing varieties only. No case-tuff handled under any circumstances.

	Per doz.	Per 100
First Size. 27 to 30 inches in circumference.....	\$4 00	\$30 00
Second Size. 35 to 45 " "	7 00	50 00
Third Size. 45 to 60 " "	10 00	75 00
Fourth Size. 60 to 75 " "	12 00	95 00

Extra Large Specimens. \$1.50 to \$5 each, according to size

In selecting a suitable size we would suggest that florists take a good portion of the second size, that being the best size at a low price, and will be sure to give satisfaction.

SPECIAL IMPORTED STOCK FOR FLORISTS—Continued.**Azalea. Mollis Varieties.**

We handle of these favorites the very best only, of the forcing and effective planting sorts.

	Per doz.	Per 100
Strong Bushes.....	\$6 00	\$45 00

Rhododendrons.

Our stock of these is now fine, and we continually add all the old and best of the tried *new* sorts, and only tested kinds for show and hardiness.

	Per doz.	Per 100
Strong Bushes.....	\$10 00	\$75 00
Extra Strong Bushes.....	12 00	95 00

Laurus Nobilis. Bay Tree.

These beautiful and hardy decorative plants are now getting in great demand, and we annually import a selected lot of fine specimens, both pyramids and standards.

Prices on application, with full description of sizes.

Bulbs.

Our success the past year in handling bulbs has been unprecedented. Everywhere we hear of the great success and satisfaction given of the quality and character of flowers produced from the bulbs supplied our customers the past season, and we are better prepared the coming year to give our friends the very finest quality of goods procurable, and at the lowest possible prices, and at the earliest possible moment. *Do not place your order until you get our figures.*

Catalogues will be mailed as soon as possible, containing list of varieties and prices.

Remember

This stock is especially grown for us by the very best growers, and should not be compared to that usually offered in the open markets.

Special Offer to Florists for Easter and Store Decorations.

We are now growing a large quantity of different varieties of Blooming Plants especially for retailers. They are all finely furnished and well set with flowers, and we ask all florists whose trade demands such plants to write to us.

Azaleas.

We have an immense stock of these popular and showy blooming plants, embracing the very cream of the New York market varieties, in all sizes, from specimens in five-inch pots up to extra large plants.

Genistas.

We have one entire house, 200 × 25 feet, filled entirely with this elegant decorative plant embracing the twelve best sorts grown, all grown with plenty of room, and are elegant plants in six and seven inch pots; also specimens in ten and twelve inch pots.



IRIS GERMANICA.

See Page 62.



LAURUS NOBILIS. (SWEET BAY.)

See Page 70.

Hydrangea Otaksa.

A fine lot of this Easter favorite will be offered, bearing fine large, perfect heads, which we can sell in assorted sizes.

Rhododendrons.

An extremely beautiful assortment of finely colored varieties of this popular class of flowering plants, in great demand, where offered. Nothing can be finer than a few finely headed rhododendrons in full bloom interspersed among the commoner sorts of blooming plants at an Easter decoration.

In addition to the above we have a fine stock of miscellaneous plants, suitable for display purposes, which will be found valuable and profitable.

Prices and sizes of the above on application.

Tools, Implements, Fertilizers, Insecticides, Etc.

Axe—	Each.		
With handle. Medium size.....	\$1 00		
“ Heavy.....	1 25		
“ Pruning.....	40		
Barrow—			
Garden. No. 1 Small Size.....	3 75		
“ “ 2 Medium.....	4 75		
“ “ 3 Large.....	5 00		
Bellows—			
Powder. Large.....	1 60		
“ Small.....	80		
Vaporizer. Large.....	1 75		
“ Small.....	1 00		
Brush, Aphis.....	50		
Chisel, Grafting.....	50		
Dibber. Two sizes.....	40		
Floral Tool Set—			
Four pieces with long handles.....	1 00		
Forks—			
Digging. 4 tines.....	65		
“ 5 “.....	75		
Mauure. 4 tines.....	65		
“ 5 “.....	75		
Hay. 2 tines.....	35		
“ 3 “.....	45		
Hickory Stable.....	45		
Fumigator—			
Excelsior. 4 qt. size.....	2 00		
“ 8 “ “.....	3 00		
“ 12 “ “.....	4 00		
“ 16 “ “.....	5 00		
Glasses, Hyacinth—			
Tall. Assorted colors..... doz.,	\$1.50.		
Low (Tye's patent). Assorted colors.....			
.....per doz.,	\$1.50.		
Gloves, Gardener's.....	pair, 75		
Glass Cutter and Glazing Tools.....	per doz., 1 00		
Glazing Points. 1,000 in a box.....	per box, 75		
Glazing Pincers.....	50		
Hoes—	Each		
Draw or Field. 5 inch.....	\$0 25		
“ “ 6 “.....	30		
“ “ 7 “.....	35		
“ “ 8 “.....	40		
Scuffle or Push. 5 inch.....	50		
“ “ 7 “.....	60		
“ “ 9 “.....	70		
Warren. 1st size. Small.....	45		
“ 2d “ Medium.....	55		
“ 3d “ Large.....	65		
Onion. 1 prong.....	25		
“ 2 “.....	30		
Hooks—			
Bill.....	1 15		
Brush.....	1 60		
Grass, or Sickle. Size No. 1.....	25		
“ “ “ “ 2.....	40		
“ “ “ “ 3.....	45		
Potato.....	40		
Horse Lawn Boots.....	per set of four, 10 00		
Hose, Rubber—			
Very best, 1/2 inch.....	per foot, 14		
“ “ 3/4 “.....	“ 15		
“ “ 1 “.....	“ 20		
Good Quality, 1/2 inch.....	“ 10		
“ “ 3/4 “.....	“ 10		
“ “ 1 “.....	“ 15		
Hydronette Pump.....	5 00		
Knives—			
Asparagus.....	1 00		
Grass or edging. With handle.....	40		
Budding.....	each, 75 cents and 1 00		
Pruning.....	each, 75 cents, \$1 and 1 25		
Labels, Wooden—	Plain. Painted.		
Pot or warden, 4 inch, pointed.....	per 1,000.. \$0 46	\$0 60	
“ “ 5 inch, pointed.....	per 1,000.. 55	780	
“ “ 6 inch “.....	70	1 05	
“ “ 8 “ per 100..	25	30	
“ “ 12 “ “.....	35	45	

Tools, Implements, etc.—Continued.

Labels, Wooden—		Each.	
Tree or Plant, notched.	3½ inch,		
	per 1,000..	\$0 35 \$0 55	
“ “	copper wired. 3½		
“ “	inch..per 1,000..	1 30 1 50	
“ “	notched. 6 inch,		
	per 1,000..	1 00 1 30	
Lawn Mower—			
New Model.	10 inch.	Net price..... 6 25	
“	12 “ “ 7 25	
“	14 “ “ 8 25	
“	16 “ “ 9 25	
“	18 “ “10 25	
“	20 “ “11 25	
Line—			
Garden.	Braided Linen.....per 100 ft.,	35	
“	Cotton..... “ “	20	
Mattock.	With handle.....	1 00	
Mats, Archangel.....	per doz.,	\$6.00.	
Mole Trap, Hale's.....		1 75	
Nozzle, Hose—			
Brass, with stop cock, spray and stream tips			
	¾ inch.....	70	
	1 inch.....	90	
Graduating Spray.	¾ inch.....	75	
	1 inch.....	90	
Rake—			
Steel Garden.	6 teeth.....	20	
“ “	8 “.....	25	
“ “	10 “.....	30	
“ “	12 “.....	35	
“ “	14 “.....	40	
“ “	16 “.....	45	
Wooden Hay.	12 teeth.....	25	
“	Lawn. 22 teeth.....	30	
Raphia.....	per lb.,	15	
Reels—			
Hose.	Holding 100 feet of hose.....	2 50	
“	“ 200 “ “.....	3 0	
For Garden Line.	Large.....	750	
“	Small.....	45	
Rollers, Iron Lawn—			
Section.	Width of Each Sec.	Height.	Weight.
2	7½ in.	15 in.	125 lbs. 6 00
1	20 “	20 “	220 “ 10 00
2	12 “	20 “	300 “ 13 00
3	12 “	20 “	450 “ 18 00
2	12 “	24 “	400 “ 15 50
2	12 “	28 “	500 “ 18 00
Saws—			
Pruning.	16 inch.....		55
“	18 “.....		60
“	20 “.....		65
Scissors.	Grape Thinning.....		60
Scythes—			
Lawn.	30 to 38 inch.....		1 10
Hay or Grass.	30 to 38 inch.....		75
Snath or Handles.....			65
Bush.....			75
Scythe Stones—			
English Round Talacre.....			10
American.....			10

Shears—		Each.
Pruning.	Solid Steel. 7½ inch.....	\$1 00
“	“ “ 8½ “.....	1 25
“	“ “ 9½ “.....	1 50
“	Ladies' 7 “.....	55
Shovels—		
Best Quality.	Square point, long or short handle.....	75
Ames Extra Quality.....		1 00
“	Round Point.....	75
Potato.	Steel wire. Large.....	1 40
Spades—		
Best quality.	Square point, long or short handle.....	75
Ames' Extra Quality.....		1 00
Sprinkler—		
Lawn.	4 arm.....	3 25
“	8 “.....	4 25
“	Perfection.....	1 25
Plant.	Rubber bulb. ½ pint.....	55
“	“ 1 “.....	85
Stakes, Plant—		
Round, tapering, painted green,	2 ft.	\$1 50
“ “ “ “	3 “.....	2 50
“ “ “ “	4 “.....	4 00
“ “ “ “	5 “.....	4 75
Square “ “ “ “	2 “.....	1 25
“ “ “ “	3 “.....	2 30
“ “ “ “	4 “.....	3 50
“ “ “ “	5 “.....	4 00
“ “ “ “	6 “.....	5 25
Dahlia Poles, Round Green.	3 ft.	3 50
“ “ “ “	4 “.....	4 75
“ “ “ “	5 “.....	6 00
“ “ “ “	6 “.....	7 50
Syringe—		
Brass.	No. A.....	2 00
“	“ 2.....	3 25
“	“ 11.....	4 00
Thermometer—		
Tin Japanned.	7 inch }.....	15
“ “	8 “ }.....	
“ “	10 “ }.....	20
“ “	12 “ }.....	
Cylindrical or Dairy.....		60
Registering.....		2 75
Hot-bed and Mushroom Bed.	12 in.....	2 00
Tree Pruner—		
Water's.	4 ft.	1 00
“	6 “.....	1 25
“	8 “.....	1 50
“	10 “.....	1 60
Tree Scraper.....		45
Trowel—		
Solid Steel.	Welded extra strong. 6 in..	50
“	“ “ 7 “.....	55
“	“ “ 8 “.....	60
American.	5 in.....	10
“	6 “.....	12
“	7 “.....	15
“	8 “.....	18

Tools, Implements, etc.—Continued.

Watering Pots—

Galvanized, 6 qt.	\$0 70
“ 8 “	80
“ 10 “	1 00
“ 12 “	1 15
“ 16 “	1 35
“ French, 6 qt.	1 50
“ “ 8 “	1 75

Wax—

For Grafting	Per lb \$0 25
French, ¼ and ½ lb. packages	70

Weeders—

Hand Excelsior	Each \$0 10
“ Noyes	18
“ Hazeltine's	15

Insecticides—

Fir Tree Oil	Per lb. pt., 75 cts.
Persian Powder	\$0 50
Paris Green	25

Insecticides—continued.

Powdered White Hellebore	Per lb. \$0 30
Slug Shot	5 lbs., 25 cts.
Hammond's Grape Dust for Mildew	5 lbs., 30 cts.
Flowers of Sulphur	06
Carbolic Soap. In ¼ lb. packages	50
Tobacco Soap	35
Gishurst's Compound	40
Whale Oil Soap	100 lbs., \$7. 15
Tobacco Stems	50 lb. bale, 80
Tobacco Dust. Very finely sifted	05

Fertilizers—

	Per ton of 2,000 lbs.
Lawn	100 lbs. \$3 00 \$45 00
Bone Meal	3 00 50 00
Cotton Seed Meal	2 50 35 00
Peruvian Guano	2 50 40 00
Ground Bone	2 50 40 00
Crushed Bone	2 50 45 00
Unleached Canadian Ashes	2 00 20 00

Books.

A list of Horticultural and Gardening books, a selection of which should be in the library of every florist, gardener, or amateur grower, and lover of plants and flowers.

The Illustrated Dictionary of Gardening. A practical Encyclopedia of Horticulture for Gardeners and Botanists. By G. Nicholson, and others. *Illustrated with numerous full-page plates printed in colors, and over 2,000 accurately executed wood cuts in the text.* The most complete work of the kind ever published, giving full particulars regarding all kinds of exotic and hardy plants and vegetables in cultivation. 4 vols., imp. 8vo., including the supplement of new species and varieties, cloth, gilt edges, \$20.

Henderson's New Handbook of Plants and General Horticulture. A dictionary of the principal cultivated plants, with short descriptions and an extensive Glossary of Botanical and Horticultural terms. 1 vol., imp. 8vo, cloth, \$4.

The Orchid Grower's Manual. By Benjamin Samuel Williams. New edition, enlarged and revised, containing descriptions of upwards of 1,470 species and varieties. *Illustrated with a large number of full page and double page engravings, and some small engravings in the text.* 8vo, cloth, \$7.

Choice Stove and Greenhouse Flowering and Ornamental-Leaved Plants. By B. S. Williams. With descriptions of upwards of 1,100 species and varieties with instructions for their culture. *With colored frontispiece and many engravings on wood.* 2 vols., 12mo, cloth, \$5.

Parsons on the Rose. A treatise on the Propagation, Culture and History of the Rose. By Samuel B. Parsons. New and revised edition, *with numerous illustrations.* 12mo, cloth, \$1.

Practical Floriculture, a Guide to the Successful Propagation and Cultivation of Florists' Plants. By Peter Henderson. New and enlarged edition. *With numerous illustrations.* 12mo, cloth, \$1.50.

The Rose. By B. Ellwanger. A Treatise on the History, etc., of the Rose, with directions for its Cultivation, including a descriptive alphabetical list of 956 varieties. 12mo, cloth, \$1.25.

Bulbs. By Edward Sprague Rand. A Treatise on Hardy and Tender Bulbs and Tubers. The best book on the subject for Americans, being written especially for the conditions, climate, etc., of this country. 12mo, cloth, \$2.50.

The Silva of North America. A description of the trees which grow naturally in North America, exclusive of Mexico. By Charles Sprague Sargent. *Illustrated with figures drawn from nature by Charles Edward Faxon.* To be complete in 12 volumes, 4to, each volume containing 50 plates; cloth, \$25 per volume. Vols. I. and II. now ready.

The Native Flowers and Ferns of the United States, in their Botanical, Horticultural and Popular Aspects. By Thomas Meehan. *Illustrated with very many chromo-lithographs.* Two series, together 4 vols., 8vo., cloth, \$28.

BOOKS—Continued.

- Practical Camellia Culture.** A Treatise on the Culture and Propagation of *Camellia Japonica*. By Robert J. Halliday. *Illustrated with five colored plates and fifty wood engravings.* 12mo, cloth, \$2.
- Practical Azalea Culture.** A Treatise on the Propagation and Cultivation of *Azalea Indica*. By Robert J. Halliday. *With illustrations.* 12mo, cloth, \$2.
- The Tuberous Begonia, Its History and Cultivation** With a select list of varieties. 12mo, paper, 50 cents.
- Chrysanthemum Culture for America.** By Jas. Morton. Full instructions for growing flowers for exhibition purposes, etc. 12mo, cloth, \$1.
- Gardening for Pleasure.** A guide to the Amateur in the Fruit, Vegetable and Flower Garden, with full Directions for the Greenhouse and Window Garden. By Peter Henderson. *With illustrations.* 12mo, cloth, \$2.
- Gardening for Profit.** A Guide to the Successful Culture of the Market and Family Garden. *With numerous illustrations.* By Peter Henderson. New edition, entirely rewritten and greatly enlarged. 12mo, cloth, \$2.
- How the Farm Pays.** By William Crozier and Peter Henderson. Full information in a popular, not scientific, style. *Profusely illustrated.* 3vo, cloth, \$2.50.
- New American Farm Book.** By R. L. Allen, and revised and enlarged by Lewis F. Allen. Treating on all the various branches of industry connected with the farm. 12mo, cloth, \$2.50.
- Grasses of North America, for Farmers and Students.** By Prof. W. J. Beal. The most recent and complete work on American Grasses; written in a popular style which can be comprehended by those who have not studied botany. *With many illustrations.* 8vo, cloth, \$2.50.
- Grasses and Forage Plants.** A Practical Treatise on the Fodder Plants of the United States and the British Provinces. By Charles L. Flint. New revised edition. *With numerous illustrations.* 12mo, cloth, \$2.
- Success with Small Fruits.** By E. P. Roe. 12mo, cloth, *with numerous illustrations,* \$1.50.
- Play and Profit in My Garden.** By E. P. Roe. 12mo, cloth, \$1.50.
- The Home Acre.** By E. P. Roe. A popular and instructive book written in an entertaining style, by the well-known and popular novelist, whose country seat at Cornwall-on-the-Hudson was one of the most beautifully laid out places in the country at the time of the author's death. 12mo, cloth, \$1.50.
- How Crops Grow.** A Treatise on the Chemical Composition, Structure and Life of the Plant. By Prof. Samuel W. Johnson, of Yale College. New edition, entirely rewritten and greatly enlarged. *With numerous illustrations.* 12mo, cloth, \$2.
- How Crops Feed.** By Prof. Samuel W. Johnson. A Treatise on the Atmosphere and the Soil as relating to the Nutrition of Agricultural Plants. *With illustrations.* 12mo, cloth, \$2.
- Elements of Agriculture.** A Book for Young Farmers. By George E. Waring, Jr. New edition, carefully revised. 12mo, cloth, \$1.
- The Propagation of Plants.** Describing the processes of Hybridizing and Crossing Species and Varieties, and also of many different modes by which the cultivated plants may be multiplied. By Andrew S. Fuller. *With illustrations.* 12mo, cloth, \$1.50.
- Practical Forestry.** A Treatise on the Propagation, Planting and Cultivation, with descriptions of the Indigenous Trees of the United States, with notes on a large number of valuable exotic species. By Andrew S. Fuller. *Illustrated.* 12mo, cloth, \$1.50.
- The Nursery Book.** A Complete Handbook of Propagation and Pollination. By Prof. L. H. Bailey, of the Cornell Experiment Station. The book tells plainly and briefly what every one who sows a seed, makes a cutting or sets a graft wants to know. *With about 100 illustrations.* 12mo, cloth, \$1.
- The Horticulturist's Rule Book.** By L. H. Bailey. Contains a great many rules and receipts used by florists, gardeners, farmers, etc., etc. Revised edition. 12mo, cloth, \$1.
- Ornamental Gardening for Americans.** A Treatise for beautifying Homes, Rural Districts and Cemeteries. By Elias A. Long. *With numerous illustrations.* 12mo, cloth, \$2.
- Truck Farming at the South.** A Guide for the Raising of Vegetables for Northern Markets. By Dr. A. Oemler. Gives full cultural directions; also methods for packing. *With illustrations.* 12mo, cloth, \$1.50.

☞ Any of the above books will be sent by mail or express prepaid on receipt of the stated price. Any other Horticultural or Farm books can be supplied, and at the publisher's price; and subscriptions for any Horticultural paper or magazine will be received at regular rates.

SPECIAL

LOW-PRICED OFFERS

—OF—

SURPLUS and GOODS TO ARRIVE

We are constantly receiving very large shipments of the many kinds of goods offered in this list, and issue at different periods of the year, special low-priced offers, both of "Goods to Arrive" and Surplus Stock. Prices therein quoted are always very low and are taken advantage of by all shrewd men in our business. By writing us for these quotations, which apply to Florists', Gardeners' and Jobbers' wants, an immediate reply is guaranteed, and your name will be placed upon our special circular list, for the articles you name.

Should the price on any article quoted in this list not be exactly in keeping with those of any other house, and you wish to favor us with a share of your business, write us to this effect, and we will mail you our special offer in quantity, which we have now ready on Flower Seeds, Vegetable Seeds, Orchids, Bulbs, Hardy Plants, &c.

Remember that we are now

NURSERYMEN, SEEDSMEN AND FLORISTS.

PITCHER & MANDA,

SHORT HILLS,

NEW JERSEY.

THE CATALOGUES WE PUBLISH.

Besides publishing our general catalogue, representing under one cover the many departments of our establishment, we issue separately, and have now ready for mailing, catalogues pertaining to the different departments, as follows:

Our Grand Annual.

Orchids and Cypripediums.

Stove and Greenhouse.


Hardy Perennials.

New and Rare Bulbs.

Seeds.

These catalogues will be found to contain a more extended list of all varieties worthy of cultivation, and, when desired, we will send any or all upon application.

SEE OPPOSITE PAGE FOR SPECIAL OFFERS.

IF YOU
KEEP A
STORE 

YOU SHOULD SEND FOR OUR

HOME COLLECTIONS
OF
FLOWER AND VEGETABLE
SEEDS

The most salable and profitable thing now in the market. Anyone can
sell them and realize 150 per cent. profit.


SAMPLE FREE ON APPLICATION.