

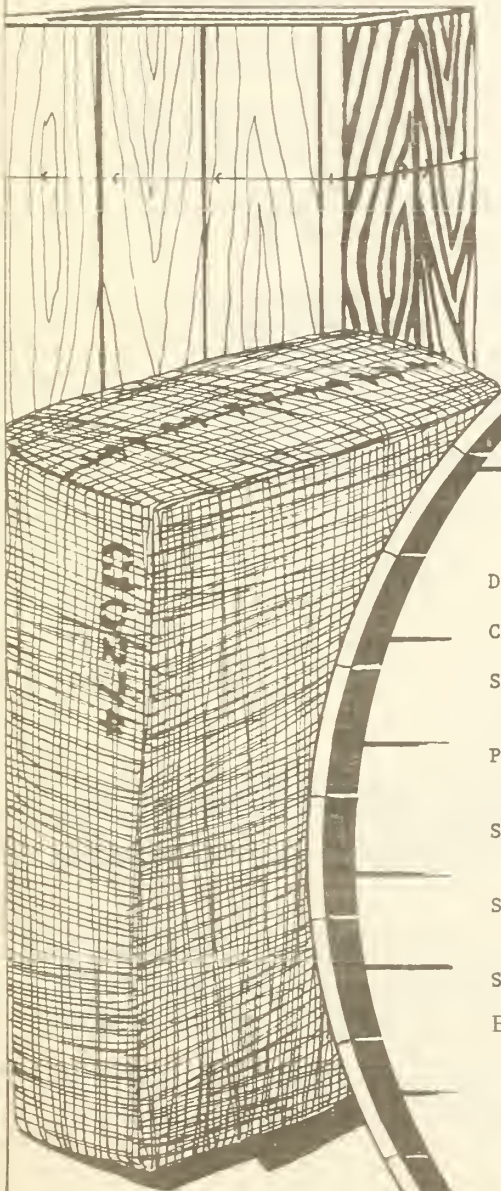
Historic, archived document

Do not assume content reflects current scientific knowledge, policies, or practices.

TOBACCO STOCKS

JANUARY 1, 1974

1.9
Ec 714
Reserve



CURRENT STOCK RECORDS

Jan 10 74

U.S. DEPARTMENT OF AGRICULTURE
Agricultural Marketing Service

CONTENTS

Discussion	3-5
Conversion factors for adjusting for losses in weight	6
Stocks of leaf tobacco, by types, converted to a FARM-SALES-WEIGHT equivalent	7
Production, stocks, supply, disappearance, and price of specified types (FARM-SALES-WEIGHT)	8-11
Summary of tobacco leaf represented in inventories of tobacco sheet	12
Stocks of leaf tobacco, by types, showing separately quantities owned by dealers and manufacturers	13
Stocks of leaf tobacco, summary by types	14
Estimated utilization of leaf	15

BRIEF CLASSIFICATION OF LEAF TOBACCO

(Covering classes and types)

CLASS 1, FLUE-CURED TYPES

- Type 11: Old Belt flue-cured; produced principally in the Piedmont sections of Virginia and North Carolina.
- Type 12: Eastern North Carolina flue-cured; produced principally in the coastal sections of North Carolina, north of the South River.
- Type 13: South Carolina flue-cured; produced principally in the coastal sections of South Carolina, the southeastern counties of North Carolina, south of the South River.
- Type 14: Georgia and Florida flue-cured; produced principally in southern Georgia and northern Florida.

CLASS 2, FIRE-CURED TYPES

- Type 21: Virginia fire-cured; produced in the Piedmont and mountain sections of Virginia.
- Type 22: Tennessee-Kentucky fire-cured, eastern district, Clarksville, Springfield, and Hopkinsville; produced principally in a section east of the Tennessee River, in southern Kentucky and northern Tennessee.
- Type 23: Kentucky-Tennessee fire-cured, western district, Mayfield, and Murray; produced principally in a section between the Tennessee, Ohio, and Mississippi rivers in western Kentucky and northwestern Tennessee.

CLASS 3, AIR-CURED TYPES

LIGHT AIR-CURED (CLASS 3a)

- Type 31: Burley; produced principally in Kentucky, Tennessee, Ohio, Indiana, West Virginia, Virginia, North Carolina, and Missouri.
- Type 32: Southern Maryland; produced principally in five counties of southern Maryland--Prince Georges, Anne Arundel, Calvert, Charles, and St. Marys.

DARK AIR-CURED (CLASS 3b)

- Type 35: One Sucker; produced in north-central Tennessee and south-central Kentucky.
- Type 36: Green River; produced in the northern part of Kentucky in the territory adjacent to Owensboro and Henderson.
- Type 37: Virginia sun-cured; produced principally in central Virginia, north of the James River.

CLASS 4, CIGAR-FILLER TYPES

- Type 41: Pennsylvania Seedleaf; produced principally in Lancaster County, Pa., and the adjoining counties.
- Type 42-44: Ohio filler; produced principally in the Miami Valley section of Ohio and extending into Indiana.
- Type 46: Puerto Rican sun-grown, including primed (Deshojado) and stalk-cut (Mata); produced on the Island of Puerto Rico

CLASS 5, CIGAR-BINDER TYPES

- Type 51: Connecticut Broadleaf; produced in the Connecticut Valley sections of Connecticut and Massachusetts.
- Type 52: Connecticut Havana Seed; produced in the Connecticut and Housatonic Valley sections of Connecticut and Massachusetts.
- Type 53: New York and Pennsylvania Havana Seed; produced in the Big Flats and Onondaga sections of New York, and extending into Pennsylvania.
- Type 54: Southern Wisconsin; produced in Wisconsin, south and east of the Wisconsin River.
- Type 55: Northern Wisconsin; produced in Wisconsin, north and west of the Wisconsin River, and in eastern Minnesota.

CLASS 6, CIGAR-WRAPPER TYPES

- Type 61: Connecticut Shade; produced in the Connecticut Valley sections of Connecticut and Massachusetts.
- Type 62: Georgia and Florida Shade; produced in southwestern Georgia and north-central Florida.

MISCELLANEOUS TYPES OF DOMESTIC TOBACCO

- Type 72: Louisiana Perique.
- Type 73: All domestic types of tobacco not otherwise classified.

FOREIGN TYPES

- Type 81: Cuba
- Type 82: Indonesia
- Type 83: Philippine Islands
- Type 84: Brazil
- Type 85: Colombia
- Type 86: Dominican Republic
- Type 87: Paraguay
- Type 88: Mexico
- Type 89: Other foreign-grown cigar leaf
- Type 91: Foreign-grown Oriental and Aromatic
- Type 92: Foreign-grown flue-cured
- Type 93: Foreign-grown burley

STOCKS OF LEAF TOBACCO OWNED BY DEALERS AND MANUFACTURERS 1/ 2/

Total stocks of leaf tobacco smaller than a year ago.

Leaf tobacco stocks in the United States and Puerto Rico totaled 4,409 million pounds as of January 1, 1974, based on the quarterly reports of dealers and manufacturers. This was a decline of 292 million pounds when compared with the previous January 1.

Domestic flue-cured and burley stocks were below the January 1, 1973 totals by 94 million and 197 million pounds respectively, while the combined inventory of foreign-grown flue-cured and burley tobaccos rose 39 million pounds to a record high of 87 million pounds. Foreign cigar leaf tobacco stocks showed a small gain of 6 million pounds. Domestic cigar filler and dark tobacco stocks reached record lows.

Loan stocks as of January 1, 1974 were divided as follows:

flue-cured	353.5	million	pounds
burley	227.0	"	"
fire-cured	2.8	"	"
dark air-cured	11.9	"	"
cigar leaf	3.4	"	"

Sales have been heavy in the flue-cured and burley cooperatives with only 268.6 million pounds of flue-cured and 78.1 million pounds of burley actually uncommitted and available for sale as of January 1, 1974.

1/ Figures quoted for type totals in this summary are the farm-sales-weight equivalent of reported stocks. (See table in body of report for reported weight basis.) This report is issued quarterly.

2/ All Government loan stocks are reported by grower cooperatives, which are considered dealers for stocks-reporting purposes.

CIGARETTE LEAF STOCKS

Flue-cured, burley, Maryland lower, imported stocks larger.

Stocks of flue-cured tobacco totaled 2,232 million pounds on January 1, 1974 -- a decline of 94 million from last January 1. Final producers' sales of the 1973 crop are estimated at 1,157 million pounds, about 135 million above last season.

Burley inventories this January 1 totaled 1,354 million pounds -- 192 million below the stocks of a year ago. Producers' sales of the 1973 crop are expected to total only 475 million pounds, a loss of at least 19 percent from the 1972 crop.

Maryland stocks on January 1, 1974 were 43.8 million pounds -- 2.7 million below a year ago.

Stocks of foreign-grown cigarette and smoking tobacco were 442.3 million pounds, an increase of 25 million from last January 1. Stock of foreign-grown burley were at record levels.

DARK TOBACCO STOCKS

Decline in both fire and dark air-cured.

Fire-cured stocks, reported at 54.3 million pounds on January 1, 1974, were 1.2 million below those of a year ago. Virginia fire-cured holdings were 6.9 million pounds; Eastern District Kentucky and Tennessee, 39.8 million; and Western District, 7.5 million pounds. Sales of the 1973 crop of Virginia fire-cured in December were about 2.9 million pounds. Kentucky and Tennessee auction markets did not open until January, but considerable tobacco was purchased in the country prior to Christmas.

Holdings of dark air-cured tobacco totaled 46.7 million pounds this January 1. This was 4.7 million below January 1, 1973. Inventories by types: One Sucker, 27.6 million pounds; Green River, 15.8 million; and Virginia sun-cured, 3.3 million pounds. Producers' sales of dark air-cured leaf prior to January 1 were approximately 4.5 million pounds.

CIGAR LEAF STOCKS

Domestic leaf lower, imported higher.

Holdings of all domestic types of cigar leaf were reported at 117.1 million pounds on January 1, 1974 -- a drop of 22.4 million pounds from a year ago. Foreign-grown cigar leaf totaled 112.3 million pounds, a gain of 5.9 million.

Cigar filler stocks totaling 57.5 million pounds were down 19.0 million from last January 1. Pennsylvania Seedleaf stocks were 45.0 million; Ohio filler, 5.8 million; and Puerto Rican, 6.8 million pounds.

Stocks of cigar binder types were down 1.2 million at 41.9 million pounds. Individual type inventories: Connecticut Valley Broadleaf, 5.2 million; Connecticut Valley Havana Seed, 2.7 million; Southern Wisconsin, 16.2 million; and Northern Wisconsin, 18.3 million pounds.

Shade-grown cigar wrapper stocks this January 1 were 17.6 million pounds -- down 2.3 million from last year. Connecticut Valley Shade stocks were 10.3 million pounds; and Georgia Florida Shade, 7.3 million.

Stocks of foreign-grown cigar leaf were divided as follows: Cuba, 0.3 million; Philippine Islands, 33.5 million, (down 3.8 million); Indonesia, 9.8 million; Brazil, 7.7 million; Columbia, 10.4 million, (up 3.4 million); Dominican Republic, 17.9 million; Paraguay, 9.0 million; Mexico, 4.8 million; and other countries, 18.9 million pounds.

STOCKS OF TOBACCO SHEET

Sheet stocks continue decline.

Stocks of leaf tobacco represented in inventories of "Tobacco Sheet" totaled 24.2 million pounds (reported weight) compared with 25.8 million on the previous January 1.

The inventory this January 1 contained 22.6 million pounds for use in cigarettes and smoking tobacco and 1.6 million pounds for cigar binder and wrapper.

TABLE 1.--Factors for adjusting stocks reported by dealers and manufacturers to a farm-sales-weight equivalent, by types of tobacco

AUCTION MARKET AREAS (Types 11-37) 1/

Type name	Type number	Factors to multiply by to convert -					
		Stemmed stocks to -		Unstemmed stocks to -			
		Unstemmed equivalent	Farm-sales weight equivalent	Farm-sales-weight equivalent	From packed weight 1/		
Flue-cured	11-14	1.295	1.450		1.12		
Virginia fire-cured	21	1.299	1.598		1.23		
Tennessee and Kentucky fire-cured	22-23	1.324	2/ 1.471		1.04		
Burley	31	1.345	1.510		1.12		
Southern Maryland	32	1.373	1.400		1.02		
One Sucker	35	1.413	1.554		1.10		
Green River	36	1.389	1.570		1.13		
Virginia sun-cured	37	1.326	1.538		1.16		
Miscellaneous domestic	72-73	1.333	1.493		1.12		
DOMESTIC-GROWN CIGAR LEAF (Types 41-62)							
			2/	Sweated weight 3/	Marked weight 3/	Farm-sales-weight 3/	Average for Jan. 1, 1974 report 3/
Pennsylvania Seedleaf	41	1.444	1.718	1.19	1.05	1.00	1.02
Ohio	42-44	1.454	1.730	1.19	1.05	1.00	1.12
Puerto Rican	46	1.314	1.551	1.18	1.16	1.00	(1.16- U. S. (1.16- P. R.
Connecticut Broadleaf	51	1.375	1.622	1.18	1.04	1.00	1.09
Connecticut Havana Seed	52	1.386	1.635	1.18	1.04	1.00	1.15
Southern Wisconsin	54	1.383	1.687	1.22	1.06	1.00	1.02
Northern Wisconsin	55	1.404	1.713	1.22	1.06	1.00	1.04
Connecticut Shade	61	1.245	1.419	1.14	1.10	1.00	1.07
Georgia and Florida Shade	62	1.235	1.408	1.14	1.10	1.00	1.12
IMPORTED LEAF (Types 81-93)							
Cigar leaf	81-89	1.400	1.624				1.16
Foreign-grown Oriental and Aromatic	91	1.333	1.466				1.10
Foreign-grown flue-cured	92	1.295	1.450				1.12
Foreign-grown burley	93	1.345	1.506				1.12

1/ Types 11-37 are reported on the basis of packed weight.

2/ Farm-sales-weight equivalent based on unstemmed sweated weight factor.

3/ The instructions for reporting unstemmed cigar-leaf of the domestic types require that dealers and manufacturers indicate the weight basis on which the tobacco is reported, namely, farm-sales-weight, marked weight, or sweated weight. The stocks are converted to the farm-sales-weight equivalent on the basis of average factors reflecting the percentage reported each quarter in each of these three categories.

TABLE 2.--Stocks of leaf tobacco owned by dealers and manufacturers, by types, converted to a farm-sales-weight equivalent January 1, 1974, compared with other quarters 1/

FARM-SALES WEIGHT

Type name	U.S. type number	January 1,			October 1,	July 1,	April 1,
		1974	1973	1972	1973	1973	1973
		1,000 lb.	1,000 lb.	1,000 lb.	1,000 lb.	1,000 lb.	1,000 lb.
Flue-cured	11-14	2,232,368	2,326,847	2,511,875	2,111,691	1,749,294	2,037,117
Virginia fire-cured	21	6,911	7,463	10,408	7,628	8,659	9,392
Tennessee and Kentucky fire-cured (Eastern District)	22	39,801	40,344	40,682	48,029	54,275	62,427
Kentucky and Tennessee (Western District)	23	7,540	7,742	6,666	9,228	10,735	11,015
Total fire-cured	21-23	54,252	55,549	57,756	64,885	73,669	82,834
Burley	31	1,353,545	1,550,837	1,564,907	1,229,175	1,384,250	1,530,262
Southern Maryland	32	43,842	46,565	46,021	52,682	59,613	42,871
Total light air-cured	31-32	1,397,387	1,597,402	1,610,928	1,281,857	1,443,863	1,573,133
One Sucker	35	27,649	31,055	33,400	28,030	30,657	34,022
Green River	36	15,813	17,193	17,368	16,685	17,763	18,827
Virginia sun-cured	37	3,271	3,105	3,412	3,204	3,472	3,694
Total dark air-cured	35-37	46,733	51,353	54,180	47,919	51,892	56,543
Pennsylvania Seedleaf	41	44,951	60,369	79,193	53,720	57,946	65,106
Ohio Filler (Miami Valley)	42-44	5,797	6,139	7,228	6,830	7,614	8,683
Puerto Rican:							
in United States	46	3,203	3,342	4,475	3,273	3,338	3,688
in Puerto Rico	46	3,564	6,618	6,830	5,919	7,263	5,711
Total cigar filler	41-46	57,515	76,468	97,726	69,742	76,161	83,188
Connecticut Valley Broadleaf	51	5,250	5,215	5,263	5,362	5,404	5,621
Connecticut Valley Havana Seed	52	2,147	2,504	2,716	2,123	2,212	2,413
Southern Wisconsin	54	16,208	17,944	17,713	19,447	21,524	24,236
Northern Wisconsin	55	18,298	17,464	18,986	19,546	22,841	23,645
Total cigar binder	51-55	41,903	43,127	44,678	46,478	51,981	55,915
Connecticut shade	61	10,328	11,545	14,160	11,384	10,745	11,394
Georgia and Florida shade	62	7,308	8,336	8,739	6,946	6,982	8,196
Total cigar wrapper	61-62	17,636	19,881	22,899	18,330	17,727	19,590
Perique	72	734	625	580	663	691	659
Other miscellaneous domestic 2/	73	5,720	5,081	5,325	5,420	5,367	5,204
Total miscellaneous domestic	72-73	6,454	5,706	5,905	6,083	6,058	5,863
Cuba	81	279	416	540	300	298	350
Indonesia	82	9,763	6,698	4,125	10,226	9,045	6,644
Philippine Islands	83	33,535	37,296	31,623	33,237	31,101	36,864
Brazil	84	7,707	8,022	7,279	8,804	10,467	8,074
Colombia	85	10,433	7,048	6,373	13,363	13,195	8,730
Dominican Republic	86	17,907	17,115	9,247	16,556	18,667	19,883
Paraguay	87	9,019	6,866	5,628	7,273	6,717	7,843
Mexico	88	4,791	6,463	5,701	6,395	4,929	5,740
Other foreign-grown cigar leaf	89	18,850	16,513	12,413	19,161	19,777	19,495
Total imported leaf	81-89	112,284	106,437	82,929	115,315	114,196	113,623
Foreign-grown Oriental and Aromatic	91	355,127	369,373	320,148	360,425	387,358	375,856
Foreign-grown flue-cured	92	37,802	31,131	12,070	37,679	39,763	31,277
Foreign-grown burley	93	49,396	17,086	6,895	35,925	27,490	23,657
Total imported cigarette and smoking tobacco leaf	91-93	442,325	417,590	339,113	434,029	454,611	430,790
Total all types	11-93	4,408,857	4,700,360	4,827,989	4,196,329	4,039,452	4,458,596

1/ Totals include stocks of leaf tobacco sheet. See separate reporting in table 4.
 2/ Type 73 is defined as all domestic tobacco not otherwise classified.

TABLE 3.--Production, stocks, supply, disappearance on a farm-sales-weight basis, and price of specified types, 1966-72

TOTAL ALL TYPES 11-62										
Marketing year	Carryover stocks (October 1) 1/				Pro-duction	Total supply	Disappearance			Average price to growers
	Manu- facturers	Under loan	Other	Total			Total	Export	Other	
	Million pounds	Million pounds	Million pounds	Million pounds	Million pounds	Million pounds	Million pounds	Million pounds	Million pounds	Cents
1966	2,789.9	1,174.9	436.9	4,401.7	1,896.6	6,298.3	2,118.4	703.3	1,415.1	66.2
1967	2,681.8	1,043.5	454.5	4,179.8	1,965.4	6,145.2	2,036.2	647.6	1,388.6	67.1
1968	2,561.4	1,154.1	392.2	4,107.7	1,731.9	5,839.6	1,991.7	622.6	1,369.1	68.8
1969	2,342.6	1,172.9	332.5	3,848.0	1,809.3	5,657.2	1,960.2	640.2	1,320.0	71.7
1970	2,137.3	1,236.7	323.0	3,697.0	1,895.9	5,592.9	1,927.4	638.5	1,288.9	73.4
1971	2,108.2	1,250.0	307.2	3,665.4	1,710.0	5,375.4	1,892.3	571.0	1,321.2	78.4
1972	2,211.6	961.9	309.6	3,483.1	1,752.9	5,236.0	1,958.1	639.0	1,319.1	82.9
1973 3/	2,289.9	697.0	291.0	3,277.9	1,795.9	5,053.8				
FLUE-CURED, TYPES 11-14 (July-June Marketing Year)										
1966	1,349.2	836.4	253.2	2,438.8	1,107.9	3,546.7	1,274.2	587.1	687.1	66.9
1967	1,306.1	685.4	281.0	2,272.5	2/1,250.0	3,522.5	1,221.0	533.3	687.7	64.2
1968	1,257.5	773.3	270.7	2,301.5	2/ 995.6	3,297.1	1,197.1	525.3	671.8	66.6
1969	1,080.8	800.5	218.8	2,100.1	1,052.8	3,152.9	1,180.5	534.6	645.9	72.4
1970	1,013.8	744.9	213.7	1,972.4	2/1,178.1	3,150.5	1,174.1	534.0	640.1	72.0
1971	1,010.0	761.9	204.5	1,976.4	2/1,076.3	3,052.7	1,142.6	480.0	662.6	77.2
1972	1,086.6	617.8	205.8	1,910.2	2/1,022.1	2,932.3	1,183.0	518.8	664.2	85.3
1973 3/	1,153.7	402.3	193.3	1,749.3	4/1,157.8	2,907.1				
VIRGINIA FIRE-CURED, TYPE 21 (October-September Marketing Year)										
1966	8.4	3.5	5.0	16.9	7.5	24.4	9.6	7.	2.	41.2
1967	7.9	2.7	4.2	14.8	7.0	21.8	10.1	6.7	3.4	40.9
1968	6.5	2.8	2.4	11.7	5.9	17.6	7.8	4.7	3.1	46.9
1969	5.0	1.9	3.0	9.9	6.7	16.6	6.8	5.1	1.7	53.1
1970	4.8	1.4	3.6	9.8	6.2	16.0	7.0	4.6	2.4	52.0
1971	4.9	1.0	3.1	9.0	5.9	14.9	6.6	3.5	3.1	54.8
1972	5.3	.4	2.6	8.3	4.7	13.0	5.3	4.1	1.2	64.2
1973 3/	4.5	6/	3.1	7.6	4/ 5.8	13.4				
TOTAL, TYPES 22-23 (October-September Marketing Year)										
1966	48.0	25.9	21.9	95.8	40.2	136.0	44.7	23.7	21.0	42.2
1967	42.0	27.3	22.0	91.3	29.4	120.7	41.9	27.1	14.8	46.2
1968	40.7	21.4	16.7	78.8	32.6	111.4	38.7	19.6	19.1	51.1
1969	42.7	11.7	18.3	72.7	34.1	106.8	42.9	24.5	18.4	48.1
1970	35.3	9.7	18.9	63.9	30.9	94.8	41.5	28.3	13.2	54.4
1971	34.6	4.7	14.0	53.3	37.6	90.9	34.7	18.7	16.0	60.8
1972	37.7	1.2	17.3	56.2	37.6	93.8	36.5	22.3	14.2	57.3
1973 3/	37.7	3.1	16.5	57.3	4/ 29.6	86.9				
TENNESSEE AND KENTUCKY FIRE-CURED, TYPE 22 (October-September Marketing Year)										
1966	40.6	17.7	16.0	74.3	29.8	104.1	32.7			42.9
1967	35.1	19.8	16.5	71.4	23.0	94.4	31.2			46.9
1968	35.0	15.4	12.8	63.2	25.3	88.5	5/ 29.6			51.5
1969	37.3	7.6	14.0	58.9	25.8	84.7	32.0			48.4
1970	30.9	6.9	15.0	52.8	24.4	77.2	31.3			54.8
1971	30.6	4.0	11.2	45.8	29.9	75.7	28.6			61.0
1972	32.2	1.1	13.8	47.1	30.6	77.7	29.7			58.0
1973 3/	22.6	2.5	12.9	48.0	4/ 24.8	72.8				
KENTUCKY AND TENNESSEE FIRE-CURED, TYPE 23 (October-September Marketing Year)										
1966	7.4	8.2	5.9	21.5	10.4	31.9	12.0			40.2
1967	6.9	7.5	5.5	19.9	6.4	26.3	10.7			43.7
1968	5.7	6.0	3.9	15.6	7.3	22.9	9.1			50.0
1969	5.4	4.1	4.3	13.8	8.2	22.0	10.9			47.3
1970	4.4	2.8	3.9	11.1	6.5	17.6	10.2			53.1
1971	4.0	0.7	2.8	7.5	7.7	15.2	6.1			60.1
1972	5.5	.1	3.5	9.1	7.0	16.1	6.8			54.4
1973 3/	5.1	0.6	3.5	9.2	4/ 4.8	14.0				

See footnotes at end of table.

Continued--

TABLE 3.-Production, stocks, supply, disappearance on a farm sales weight basis, and price of specified types, 1966-72

BURLEY, TYPE 31 (October-September Marketing Year)										
Marketing year	Carryover stocks (October 1) ^{1/}				Pro-duction	Total supply	Disappearance			Average price to growers
	Manu- facturers	Under loan	Other	Total			Total	Export	Other	
	Million pounds	Million pounds	Million pounds	Million pounds	Million pounds	Million pounds	Million pounds	Million pounds	Million pounds	Cents
1966	1,065.4	261.9	68.0	1,395.3	586.7	1,982.0	600.5	56.4	544.1	66.9
1967	1,038.1	276.7	66.7	1,381.5	540.6	1,922.2	598.1	53.4	544.7	71.8
1968	966.5	321.7	35.9	1,324.1	563.4	1,887.5	571.0	54.9	516.1	73.7
1969	941.6	340.8	34.1	1,316.5	591.4	1,907.9	565.2	58.1	507.1	69.6
1970	858.0	454.8	29.9	1,342.7	560.5	1,903.2	557.4	54.4	503.0	72.2
1971	854.4	463.4	28.0	1,345.8	472.6	1,818.4	569.9	54.7	515.2	80.9
1972	887.7	327.7	33.1	1,248.5	2/ 590.3	1,838.8	609.6	75.6	534.0	79.2
1973 3/	920.3	276.7	32.2	1,229.2	4/ 475.1	1,704.3				

MARYLAND, TYPE 32 (October-September Marketing Year)										
Marketing year	Manu- facturers	Under loan	Other	Total	Pro-duction	Total supply	Total	Export	Other	Average price to growers
	Million pounds	Million pounds	Million pounds	Million pounds	Million pounds	Million pounds	Million pounds	Million pounds	Million pounds	Cents
1966	47.4	22.5	29.8	99.7	36.1	135.8	40.2	16.5	23.7	48.6
1967	48.9	18.5	28.2	95.6	32.4	128.0	36.0	15.7	20.3	62.4
1968	57.8	9.3	24.9	92.0	31.9	123.9	48.6	10.3	38.3	69.8
1969	56.8	--	18.4	75.2	28.1	103.3	41.3	12.2	29.1	75.1
1970	42.6	--	19.4	62.0	29.4	91.4	39.5	11.9	27.6	78.6
1971	34.7	--	17.1	51.8	28.1	79.9	25.5	8.0	17.5	81.9
1972	33.7	--	20.7	54.4	23.8	78.2	25.5	12.1	13.4	84.4
1973 3/	32.8	--	19.9	52.7	4/ 26.4	79.1				

TOTAL, TYPES 35-36 (October-September Marketing Year)										
Marketing year	Manu- facturers	Under loan	Other	Total	Pro-duction	Total supply	Total	Export	Other	Average price to growers
	Million pounds	Million pounds	Million pounds	Million pounds	Million pounds	Million pounds	Million pounds	Million pounds	Million pounds	Cents
1966	36.3	19.6	4.7	60.6	21.3	81.9	21.4	4.4	17.0	37.3
1967	35.9	21.3	3.3	60.5	15.5	76.0	17.8	3.0	14.8	40.8
1968	36.6	17.1	4.5	58.2	18.0	76.2	17.1	2.0	15.1	47.4
1969	41.1	15.0	3.0	59.1	18.1	77.2	23.5	2.3	21.2	40.3
1970	32.7	18.2	2.8	53.7	15.4	69.1	19.2	2.5	16.7	46.0
1971	32.6	14.3	2.9	49.8	15.7	65.5	19.3	1.9	17.4	47.1
1972	30.9	12.7	2.6	46.2	15.5	61.7	17.0	2.3	14.7	50.3
1973 3/	29.0	12.8	2.9	44.7	4/ 13.2	57.9				

ONE SUCKER, TYPE 35 (October-September Marketing Year)										
Marketing year	Manu- facturers	Under loan	Other	Total	Pro-duction	Total supply	Total	Export	Other	Average price to growers
	Million pounds	Million pounds	Million pounds	Million pounds	Million pounds	Million pounds	Million pounds	Million pounds	Million pounds	Cents
1966	22.4	11.7	3.8	37.9	14.2	52.2	14.8	3.3	11.5	37.8
1967	22.3	12.0	3.1	37.4	10.4	47.8	11.4	2.4	9.0	42.3
1968	23.9	8.7	3.8	36.4	12.6	49.0	10.4	1.4	9.0	49.5
1969	28.3	7.8	2.6	38.7	13.3	52.0	17.6	1.9	15.7	40.7
1970	21.9	10.1	2.3	34.3	10.9	45.2	13.2	2.0	11.2	47.5
1971	22.2	7.8	2.0	32.0	11.2	43.2	13.8	1.6	12.2	47.3
1972	20.7	6.3	2.4	29.4	10.6	40.0	12.0	2.0	10.0	51.6
1973 3/	19.7	6.1	2.2	28.0	4/ 9.2	37.2				

GREEN RIVER, TYPE 36 (October-September Marketing Year)										
Marketing year	Manu- facturers	Under loan	Other	Total	Pro-duction	Total supply	Total	Export	Other	Average price to growers
	Million pounds	Million pounds	Million pounds	Million pounds	Million pounds	Million pounds	Million pounds	Million pounds	Million pounds	Cents
1966	13.9	7.9	.9	22.7	7.0	29.7	6.6	1.0	5.5	36.3
1967	13.6	9.3	.2	23.1	5.0	28.2	6.4	.6	5.8	37.9
1968	12.7	8.4	.7	21.7	5.4	27.1	6.7	.6	6.1	42.7
1969	12.8	7.2	.4	20.4	4.8	25.2	5.9	.4	5.5	39.4
1970	10.8	8.1	.5	19.4	4.4	23.8	6.0	.5	5.5	42.5
1971	10.4	6.5	.9	17.8	4.5	22.3	5.5	.3	5.2	46.4
1972	10.2	6.4	.2	16.8	4.9	21.7	5.0	.3	4.7	47.4
1973 3/	9.3	6.7	.7	16.7	4/ 4.0	20.7				

VIRGINIA SUN-CURED, TYPE 37 (October-September Marketing Year)										
Marketing year	Manu- facturers	Under loan	Other	Total	Pro-duction	Total supply	Total	Export	Other	Average price to growers
	Million pounds	Million pounds	Million pounds	Million pounds	Million pounds	Million pounds	Million pounds	Million pounds	Million pounds	Cents
1966	3.9	--	.4	4.3	1.5	5.8	1.6	.4	1.3	42.3
1967	3.8	--	.4	4.2	1.3	5.5	1.5	.4	1.2	45.2
1968	3.7	--	.2	3.9	1.2	5.1	1.3	.2	1.1	53.2
1969	3.5	--	.3	3.8	1.3	5.1	1.8	.3	1.5	52.8
1970	3.2	--	.1	3.3	1.1	4.4	1.3	.3	1.0	53.8
1971	3.0	--	.1	3.1	1.1	4.2	1.2	.2	1.0	54.1
1972	3.0	--	-	3.0	0.8	3.8	0.6	.2	0.4	57.9
1973 3/	3.2	--	6/	3.2	4/ 0.8	4.0				

See footnotes at end of table.

Continued--

TABLE 3.--Production, stocks, supply, disappearance on a farm-sales-weight basis, and price of specified types, 1966-72

PENNSYLVANIA SEEDLEAF, TYPE 41 (October-September Marketing Year)										
Marketing year	Carryover stocks (October 1) 2/				Pro-duction	Total supply	Disappearance			Average price to growers
	Manu- facturers	Under loan	Other	Total			Total	Export	Other	
	Million pounds	Million pounds	Million pounds	Million pounds	Million pounds	Million pounds	Million pounds	Million pounds	Million pounds	Cents
1966	105.5	--	22.2	127.7	36.2	163.9	51.7	1.5	50.2	25.0
1967	86.5	--	25.5	112.3	38.3	150.6	41.9	.6	41.3	28.0
1968	87.3	--	21.4	108.7	37.3	146.0	40.9	.9	40.0	30.0
1969	79.3	--	25.8	105.1	36.5	141.6	44.3	.6	43.7	30.0
1970	70.5	--	26.8	97.3	30.6	127.9	40.9	.2	40.7	31.0
1971	59.4	--	27.6	87.0	24.5	111.5	41.3	.4	40.9	36.0
1972	53.8	--	16.4	70.2	18.2	88.4	34.6	.3	34.3	46.0
1973 3/	42.9	--	10.8	53.7	4/ 23.1	76.8				

MIAMI VALLEY (OHIO) FILLER, TYPES 42-44
(October-September Marketing Year)

1966	14.6	--	1.5	16.2	6.0	22.3	6.8	--	6.8	28.0
1967	14.5	.2	.8	15.5	3.6	19.1	6.2	--	6.2	29.0
1968	11.2	--	1.7	12.9	3.4	16.3	5.4	--	5.4	31.0
1969	9.6	--	1.3	10.9	2.8	13.7	4.7	--	4.7	32.5
1970	8.2	.1	.7	9.0	2.9	11.9	4.1	--	4.1	38.0
1971	7.4	--	.4	7.8	3.8	11.6	4.6	--	4.6	41.0
1972	6.7	--	.3	7.0	4.2	11.2	4.4	--	4.4	44.0
1973 3/	5.8	--	1.0	6.8	4/ 3.6	10.4				

PUERTO RICAN FILLER, TYPE 46
(October-September Marketing Year)

1966	34.5	--	17.2	51.8	12.0	63.8	23.4	.1	23.3	31.3
1967	30.2	1.5	8.8	40.5	10.8	51.3	16.9	--	16.9	33.1
1968	28.5	1.5	4.4	34.4	7.6	42.0	16.2	--	16.2	33.3
1969	21.1	1.5	3.2	25.8	6.1	31.9	12.6	--	12.6	33.6
1970	12.9	5.5	.9	19.3	4.5	23.8	8.8	--	8.8	36.1
1971	9.7	2.8	2.5	15.0	6.7	21.7	9.0	--	9.0	39.8
1972	9.0	--	3.7	12.7	4.7	17.4	8.2	--	8.2	43.2
1973	6.8	--	2.4	9.2	4/ 8.0	17.2				

CONNECTICUT BINDER, TYPES 51-52
(October-September Marketing Year)

1966	12.7	3.7	2.9	19.3	3.8	23.2	6.8	1.6	5.1	51.2
1967	9.2	3.3	3.9	16.4	2.7	19.1	7.9	2.2	5.7	54.5
1968	7.3	1.5	2.4	11.2	2.8	14.0	5.1	.4	4.7	59.5
1969	4.8	1.4	2.7	8.9	2.3	11.2	4.2	.3	3.9	58.2
1970	3.0	2.1	1.9	7.0	2.9	9.9	2.8	.3	2.5	65.5
1971	2.9	1.9	2.4	7.2	2.8	10.0	2.5	.1	2.4	65.7
1972	3.3	2.0	2.1	7.4	2.7	10.1	2.6	.1	2.5	70.2
1973 3/	3.3	2.1	2.1	7.5	4/ 2.5	10.0				

CONNECTICUT BROADLEAF, TYPE 51
(October-September Marketing Year)

1966	10.4	1.0	2.5	13.9	2.7	16.6	4.8	1.6	3.1	52.0
1967	7.7	1.1	3.0	11.8	2.0	13.8	5.3	2.2	3.2	55.0
1968	6.0	.5	2.0	8.5	2.1	10.6	4.3	.4	3.9	60.0
1969	3.7	.4	2.1	6.2	1.7	7.9	3.6	.3	3.3	59.0
1970	1.9	.9	1.5	4.3	2.2	6.5	2.1	.3	1.8	67.0
1971	1.8	1.1	1.5	4.4	2.2	6.6	1.4	.1	1.3	67.0
1972	2.3	1.2	1.7	5.2	2.2	7.4	2.0	.1	1.9	72.0
1973 3/	2.4	1.2	1.8	5.4	4/ 2.1	7.5				

CONNECTICUT HAVANA SEED, TYPE 52
(October-September Marketing Year)

1966	2.3	2.7	.4	5.4	1.1	6.6	2.0	--	2.0	49.5
1967	1.5	2.2	.8	4.5	.7	5.3	2.5	--	2.5	53.0
1968	1.4	1.0	.4	2.8	.7	3.5	.8	--	.8	58.0
1969	1.1	1.0	.6	2.7	.6	3.3	.6	--	.6	56.0
1970	1.1	1.2	.4	2.7	.7	3.4	.7	--	.7	61.0
1971	1.1	.8	.9	2.8	.6	3.4	1.1	--	1.1	61.0
1972	1.0	.8	.5	2.3	.5	2.8	0.6	--	0.6	62.0
1973 3/	0.9	.9	.3	2.1	4/ .4	2.5				

See footnotes at end of table.

Continued--

TABLE 3.--Production, stocks, supply, disappearance on a farm-sales-weight basis, and price of specified types, 1966-72

WISCONSIN BINDER, TYPES 54-55
(October-September Marketing Year)

Marketing year	Carryover stocks (October 1) ^{2/}				Pro-duction	Total supply	Disappearance			Average price to growers
	Manu- facturers	Under loan	Other	Total			Total	Export	Other	
	Million pounds	Million pounds	Million pounds	Million pounds	Million pounds	Million pounds	Million pounds	Million pounds	Million pounds	Cents
1966	44.1	3.6	2.9	50.6	16.3	66.9	16.9	.3	16.6	33.3
1967	39.2	6.6	4.2	50.0	16.1	66.1	17.4	.4	17.0	34.2
1968	40.0	5.4	3.4	48.8	14.0	62.8	22.5	.4	22.1	37.3
1969	38.6	.1	1.6	40.3	13.2	53.5	18.2	.3	17.9	41.8
1970	33.3	--	1.9	35.2	18.4	53.6	16.5	.1	16.4	51.1
1971	35.2	--	2.0	37.2	22.5	59.7	20.4	6/	20.4	54.9
1972	37.0	6/	2.3	39.3	18.7	57.9	18.9	6/	18.9	48.5
1973 ^{3/}	35.2	--	3.8	39.0	4/ 19.6	58.6				

SOUTHERN WISCONSIN, TYPE 54
(October-September Marketing Year)

1966	21.1	.5	.8	22.4	7.4	29.8	9.1	--	9.1	34.3
1967	19.6	.7	.4	20.7	7.2	27.9	8.1	--	8.1	34.3
1968	18.8	.3	.8	19.9	7.4	27.3	7.7	--	7.7	36.8
1969	19.1	6/	.5	19.6	6.4	26.0	9.3	--	9.3	40.2
1970	16.5	--	.2	16.7	9.4	26.1	7.3	--	7.3	50.3
1971	18.2	--	.6	18.8	12.0	30.8	10.5	--	10.5	55.6
1972	19.2	--	1.1	20.3	8.4	28.7	9.2	6/	9.2	48.0
1973 ^{3/}	17.4	6/	2.0	19.4	9.6	29.0				

NORTHERN WISCONSIN, TYPE 55
(October-September Marketing year)

1966	23.0	3.1	2.0	28.2	8.8	37.0	7.7	.3	7.4	32.4
1967	19.6	5.9	3.8	29.3	8.9	38.2	9.3	.4	8.9	34.1
1968	21.2	5.1	2.6	28.9	6.7	35.6	14.9	.4	14.5	37.9
1969	19.5	6/	1.1	20.7	6.7	27.4	8.9	.3	8.6	43.4
1970	16.8	--	1.8	18.6	9.0	27.6	9.2	.1	9.1	52.0
1971	17.0	--	1.4	18.4	10.5	28.9	9.9	--	9.9	54.0
1972	17.8	--	1.2	19.0	10.3	29.2	9.7	6/	9.7	49.0
1973 ^{3/}	17.8	6/	1.8	19.6	4/ 10.0	29.6				

TOTAL CIGAR WRAPPER, TYPES 61-62
(July-June Marketing Year)

1966	20.1	--	4.4	24.5	21.0	45.5	20.8	4.2	16.6	257.0
1967	19.5	--	5.2	24.7	17.6	42.3	20.8	4.9	15.9	308.0
1968	17.8	--	3.7	21.5	18.1	39.6	19.9	3.8	16.1	276.0
1969	17.7	--	2.0	19.7	15.9	35.6	14.1	1.9	12.2	341.3
1970	19.0	--	2.4	21.4	14.9	36.3	14.4	1.9	12.5	351.0
1971	19.3	--	2.7	22.0	12.4	34.4	14.6	3.4	11.2	347.5
1972	17.1	--	2.7	19.8	9.7	29.5	11.8	3.2	8.6	384.5
1973 ^{3/}	14.7	--	3.0	17.7	4/ 10.3	28.0				

CONNECTICUT SHADE, TYPE 61
(July-June Marketing Year)

1966	13.9	--	2.4	16.3	13.7	30.0	14.0	3.5	10.5	295.0
1967	13.3	--	2.7	16.0	9.6	25.6	12.9	3.3	9.6	360.0
1968	11.5	--	1.2	12.7	10.2	22.9	10.8	1.7	9.1	280.0
1969	11.2	--	.9	12.1	8.1	20.2	8.0	1.0	7.0	400.0
1970	11.4	--	.8	12.2	9.3	21.5	7.6	1.0	6.6	400.0
1971	12.5	--	1.4	13.9	7.7	21.6	8.4	2.7	5.7	400.0
1972	11.4	--	1.8	13.2	5.1	18.2	7.5	2.8	4.7	480.0
1973 ^{3/}	9.0	--	1.7	10.7	4/ 6.6	17.3				

GEORGIA AND FLORIDA SHADE, TYPE 62
(July-June Marketing Year)

1966	6.2	--	2.0	8.2	7.3	15.5	6.8	0.7	6.1	185.0
1967	6.2	--	2.5	8.7	8.0	16.7	7.9	1.6	6.3	245.0
1968	6.3	--	2.5	8.8	7.9	16.7	9.1	2.1	7.0	270.0
1969	6.5	--	1.0	7.5	7.8	15.3	6.1	0.9	5.2	280.0
1970	7.5	--	1.7	9.2	5.6	14.8	6.7	0.9	5.8	270.0
1971	6.8	--	1.3	8.1	4.7	12.8	6.2	0.8	5.4	262.0
1972	5.7	--	1.0	6.7	4.6	11.3	4.3	0.4	3.9	280.0
1973 ^{3/}	5.7	--	1.3	7.0	4/ 3.7	10.7				

^{1/} Tabulated by broad groupings of ownership. "Other" represents stocks of dealers and those held in the United States by foreign manufacturers. Stocks shown are as of July 1 for flue-cured and cigar wrapper and October 1 for all other types. ^{2/} Sales substituted for production. ^{3/} Subject to revision. ^{4/} January 1 estimate, U. S. Crop Reporting Board, SRS. ^{5/} Includes 4.7 million pounds destroyed by fire. ^{6/} Less than 50,000 pounds.

Detail may not add to total because of rounding.

TABLE 4.--Summary of tobacco leaf represented in inventories of tobacco sheet, for cigar binder and wrapper, and for cigarettes (including smoking tobacco), separately

REPORTED WEIGHT

Cigar Binder and Wrapper

U.S. type number		Cigar Binder and Wrapper					
		January 1,			October 1,	July 1,	April 1,
		1974	1973	1972	1973	1973	1973
		1,000 lb.	1,000 lb.	1,000 lb.	1,000 lb.	1,000 lb.	1,000 lb.
11-14	Stemmed	5	7	2	6	5	8
32	Stemmed	48	43	40	52	51	46
	Unstemmed	354	649	528	487	693	532
41	Stemmed	545	447	444	417	450	507
	Total	899	1,096	972	904	1,143	1,039
42-44	Stemmed	31	34	32	34	33	30
46	Stemmed	7	10	9	6	7	8
	Unstemmed	31	55	54	30	85	61
51	Stemmed	9	0	0	0	0	0
	Total	40	55	54	30	85	61
	Unstemmed	40	88	68	41	41	51
52	Stemmed	5	0	0	0	0	0
	Total	45	88	68	41	41	51
54	Stemmed	156	268	211	189	283	328
	Unstemmed	2	16	50	2	2	4
55	Stemmed	34	52	86	26	34	23
	Total	36	68	136	28	36	27
	Unstemmed	10	8	15	10	19	9
61	Stemmed	5	32	10	6	16	23
	Total	15	40	25	16	35	32
62	Stemmed	0	1	15	1	1	1
81	Stemmed	10	5	11	15	4	6
	Unstemmed	3	13	12	3	3	6
82	Stemmed	4	25	3	18	16	17
	Total	7	38	15	21	19	23
	Unstemmed	0	0	11	0	0	0
83	Stemmed	77	97	80	82	84	79
	Total	77	97	91	82	84	79
84	Stemmed	11	25	8	11	12	13
85	Stemmed	7	15	6	7	8	8
	Unstemmed	5	25	31	5	6	11
86	Stemmed	10	24	14	11	12	12
	Total	15	49	45	16	18	23
	Unstemmed	146	0	0	0	0	0
87	Stemmed	27	35	19	39	36	34
	Total	173	35	19	39	36	34
88	Stemmed	0	0	1	0	0	0
89	Stemmed	20	37	19	21	21	23
	Unstemmed	591	854	769	578	849	674
Total	Stemmed	1,011	1,157	1,010	941	1,073	1,166
	Total	1,602	2,011	1,779	1,519	1,922	1,840

Cigarettes (including smoking tobacco)

11-14	Unstemmed	1,093	1,431	2,203	1,167	978	1,200
	Stemmed	10,866	10,004	8,710	11,181	10,900	10,794
	Total	11,959	11,435	10,913	12,348	11,878	11,994
	Unstemmed	586	626	1,137	744	857	816
31	Stemmed	5,299	5,029	5,136	5,528	5,904	6,096
	Total	5,885	5,655	6,273	6,272	6,761	6,912
32	Stemmed	140	293	116	117	113	390
	Unstemmed	262	1,165	2,847	346	423	842
41	Stemmed	36	330	840	60	79	254
	Total	298	1,495	3,687	406	502	1,096
	Unstemmed	23	29	30	27	35	27
61	Stemmed	16	49	162	16	16	31
	Total	39	78	192	43	51	58
	Unstemmed	3,019	3,535	4,725	3,028	2,804	3,274
91	Stemmed	1,270	1,325	967	1,315	1,360	964
	Total	4,289	4,860	5,692	4,343	4,164	4,238
	Unstemmed	4,983	6,786	10,942	5,312	5,097	6,159
Total	Stemmed	17,627	17,030	15,931	18,217	18,372	18,529
	Total	22,610	23,816	26,873	23,529	23,469	24,688

Grand Total

Total	Unstemmed	5,574	7,640	11,711	5,890	5,946	6,833
all	Stemmed	18,638	18,187	16,941	19,158	19,445	19,695
types	Total	24,212	25,827	28,652	25,048	25,391	26,528

TABLE 5.--Stocks of leaf tobacco, by types, showing separately quantities owned by dealers and manufacturers, January 1, 1974, compared with January 1, 1973 1/ 2/

REPORTED WEIGHT

U.S. type number	Reported as owned by manufacturers 3/			January 1, 1973	Reported as owned by dealers (including loan stocks) 3/			January 1, 1973
	January 1, 1974				January 1, 1974			
	Unstemmed	Stemmed	Total		Unstemmed	Stemmed	Total	
	1,000 lb.	1,000 lb.	1,000 lb.	1,000 lb.	1,000 lb.	1,000 lb.	1,000 lb.	1,000 lb.
11-14	14,327	1,004,987	1,019,314	1,013,828	287,291	301,604	588,895	695,398
21	3,380	23	3,403	3,831	1,991	167	2,158	2,204
22	27,643	336	27,979	28,684	10,134	13	10,147	9,953
23	3,723	610	4,333	4,790	2,665	0	2,665	2,468
21-23	34,746	969	35,715	37,305	14,790	180	14,970	14,625
31	85,297	649,677	734,974	839,341	205,060	31,346	236,406	296,612
32	3,848	17,726	21,574	21,250	5,628	6,686	12,314	14,275
31-32	89,145	667,403	756,548	860,591	210,688	38,032	248,720	310,887
35	9,643	5,878	15,521	17,547	7,046	101	7,147	8,858
36	5,196	1,785	6,981	8,101	6,211	77	6,288	6,647
37	1,249	1,178	2,427	2,244	8	1	9	1
35-37	16,088	8,841	24,929	27,892	13,265	179	13,444	15,506
41	20,612	10,275	30,887	35,947	5,442	421	5,863	11,966
42-44	4,195	214	4,409	4,929	651	0	651	311
46 4/	2,238	1,566	3,804	6,349	1,285	163	1,448	1,586
41-46	27,045	12,055	39,100	47,225	7,378	584	7,962	13,863
51	1,197	667	1,864	1,656	2,545	55	2,600	2,682
52	686	21	707	901	1,150	1	1,151	1,304
54	11,644	1,826	13,470	14,772	1,095	79	1,174	960
55	9,009	3,747	12,756	12,042	2,154	157	2,311	1,243
51-55	22,536	6,261	28,797	29,371	6,944	292	7,236	6,189
61	6,059	1,194	7,253	8,558	2,010	0	2,010	1,732
62	4,498	607	5,105	5,862	736	420	1,156	1,428
61-62	10,557	1,801	12,358	14,420	2,746	420	3,166	3,160
72	4	278	282	267	82	150	232	172
73 5/	0	3,789	3,789	3,353	0	42	42	54
72-73	4	4,067	4,071	3,620	82	192	274	226
81	3	83	86	142	14	77	91	141
82	2,751	1,284	4,035	2,428	3,612	182	3,794	2,820
83	4,559	5,158	9,717	14,554	6,968	7,258	14,226	13,650
84	1,951	1,305	3,256	2,874	2,650	154	2,804	3,300
85	2,435	2,869	5,304	3,269	2,277	190	2,467	1,944
86	7,590	3,955	11,545	10,975	1,852	328	2,180	2,360
87	2,000	1,789	3,789	1,202	3,260	8	3,268	4,352
88	1,872	865	2,737	3,520	1,008	28	1,036	1,480
89	6,278	2,709	8,987	6,456	5,353	591	5,944	6,906
81-89	29,439	20,017	49,456	45,420	26,994	8,816	35,810	36,953
91	319,602	2,242	321,844	333,369	253	0	253	529
92	7,107	12,430	19,537	9,966	7,104	2,664	9,768	14,883
93	1,834	22,931	24,765	6,101	4,298	5,308	9,606	7,055
91-93	328,543	37,603	366,146	349,436	11,655	7,972	19,627	22,467
11-93	572,430	1,764,004	2,336,434	2,429,108	581,833	358,271	940,104	1,119,274

1/ Total includes stocks of leaf reported in tobacco sheet. See separate reporting in table 4.

2/ These statistics represent the quantity of leaf tobacco reported as owned by all leaf tobacco dealers, manufacturers, quasi-manufacturers, growers' cooperative associations, warehousemen, brokers, holders, and owners subject to provisions of the Tobacco Stocks and Standards Act approved January 14, 1929, and the amendments thereto passed in the 72nd and 74th Congress. The quantities owned by dealers and manufacturers have been tabulated separately on a type total basis.

3/ This table should be considered as representing only the approximate quantities owned respectively by dealers and manufacturers. The quantities shown as owned by manufacturers represent domestic manufacturers only. All Government loan stocks are dealers' holdings.

4/ Includes stocks on the island of Puerto Rico.

5/ For explanation of stocks included in this classification see footnote 2 on page 7.

TABLE 6.--Stocks of leaf tobacco owned by dealers and manufacturers, summary by types, January 1, 1974, compared with other quarters 1/ 2/

REPORTED WEIGHT

Type number	U.S. type number	January 1, 1974 3/			January 1, 1973	October 1, 1973	July 1, 1973
		Unstemmed	Stemmed	Total			
		1,000 lb.	1,000 lb.	1,000 lb.	1,000 lb.	1,000 lb.	1,000 lb.
Flue-cured	11-14	301,618	1,306,591	1,608,209	1,709,226	1,537,452	1,274,051
Virginia fire-cured	21	5,371	190	5,561	6,035	6,191	7,012
Tennessee and Kentucky fire-cured (Eastern District)	22	37,777	349	38,126	38,637	46,012	52,021
Kentucky and Tennessee fire-cured (Western District)	23	6,388	610	6,998	7,258	8,616	10,066
Total fire-cured	21-23	49,536	1,149	50,685	51,930	60,819	69,099
Burley	31	290,357	681,023	971,380	1,135,953	879,194	984,010
Southern Maryland	32	9,476	24,412	33,888	35,525	40,633	47,574
Total light air-cured	31-32	299,833	705,435	1,005,268	1,171,478	919,827	1,031,584
One Sucker	35	16,689	5,979	22,668	26,405	22,825	24,877
Green River	36	11,407	1,862	13,269	14,748	13,967	14,890
Virginia sun-cured	37	1,257	1,179	2,436	2,245	2,385	2,574
Total dark air-cured	35-37	29,353	9,020	38,373	43,398	39,177	42,341
Pennsylvania Seedleaf	41	26,054	10,696	36,750	47,913	43,815	47,229
Ohio Filler (Miami Valley)	42-44	4,846	214	5,060	5,240	6,012	6,685
Puerto Rico:							
in United States	46	1,106	1,239	2,345	2,579	2,420	2,495
in Puerto Rico	46	2,417	490	2,907	5,356	4,972	6,592
Total cigar filler	41-46	34,423	12,639	47,062	61,088	57,219	63,001
Connecticut Valley Broadleaf	51	3,742	722	4,464	4,338	4,438	4,558
Connecticut Valley Havana Seed	52	1,836	22	1,858	2,205	1,837	1,929
Southern Wisconsin	54	12,739	1,905	14,644	15,732	17,456	19,416
Northern Wisconsin	55	11,163	3,904	15,067	13,285	15,877	18,660
Total cigar binder	51-55	29,480	6,553	36,033	35,560	39,608	44,563
Connecticut shade	61	8,069	1,194	9,263	10,290	10,113	9,605
Georgia and Florida shade	62	5,234	1,027	6,261	7,290	5,994	6,063
Total	61-62	13,303	2,221	15,524	17,580	16,107	15,668
Perique	72	86	428	514	439	473	481
Other miscellaneous domestic	73 4/	0	3,831	3,831	3,407	3,630	3,595
Total miscellaneous domestic	72-73	86	4,259	4,345	3,846	4,103	4,076
Cuba	81	17	160	177	283	190	192
Indonesia	82	6,363	1,466	7,829	5,248	8,304	7,218
Philippine Islands	83	11,527	12,416	23,943	28,204	24,212	22,785
Brazil	84	4,601	1,459	6,060	6,174	6,948	8,347
Colombia	85	4,712	3,059	7,771	5,213	10,140	9,944
Dominican Republic	86	9,442	4,283	13,725	13,335	12,554	14,394
Paraguay	87	5,260	1,797	7,057	5,554	5,977	5,435
Mexico	88	2,880	893	3,773	5,000	5,095	3,852
Other foreign-grown cigar leaf	89	11,631	3,300	14,931	13,362	15,584	16,269
Total foreign-grown cigar leaf	81-89	56,433	28,833	85,266	82,373	89,004	88,436
Foreign-grown Oriental and Aromatic	91	319,855	2,242	322,097	333,898	326,874	351,261
Foreign-grown flue-cured	92	14,211	15,094	29,305	24,849	29,075	30,974
Foreign-grown burley	93	6,132	28,239	34,371	13,156	25,197	19,962
Total imported cigarette and smoking tobacco leaf	91-93	340,198	45,575	385,773	371,903	381,146	402,197
Total all types	11-93	1,154,263	2,122,275	3,276,538	3,548,382	3,144,462	3,035,016

1/ Totals include stocks of leaf reported in tobacco sheet. See reporting in table 4.

2/ These statistics represent the quantity of leaf tobacco reported as owned by all leaf tobacco dealers, manufacturers, quasi-manufacturers, growers' cooperative associations, warehousemen, brokers, holders, and owners except (a) the original growers of tobacco; (b) manufacturers who in the first three quarters of 1973, according to the returns of the Commissioner of Internal Revenue, manufactured less than 35,000 pounds of tobacco, less than 185,000 cigars, or less than 750,000 cigarettes, pursuant to the provisions of the Tobacco Stocks and Standards Act approved January 14, 1929, and the amendments thereto passed in the 72nd and 74th Congress.

3/ Subject to revision.

4/ For explanation of stocks included in this classification see footnote 2 on page 7.

TABLE 7. --Estimated utilization of flue-cured, burley, and Maryland tobaccos in cigarettes and other products, averages 1939-58, annual 1958-59 to 1971-72 (July-June basis)

Year beginning July	(Farm-sales-weight)								
	Flue-cured			Burley 1/			Maryland		
	Ciga- rettes	Other 2/ products	Total domestic	Ciga- rettes	Other 2/ products	Total domestic	Ciga- rettes	Other 2/ products	Total domestic
Mil. lb.	Mil. lb.	Mil. lb.	Mil. lb.	Mil. lb.	Mil. lb.	Mil. lb.	Mil. lb.	Mil. lb.	Mil. lb.
1939-43	445	67	512	243	125	368	23	3	26
1944-48	637	50	687	381	96	477	24	3	27
1949-53	731	42	773	424	77	501	24	4	28
1954-58	692	38	730	421	62	483	19	5	25
1958	698	38	736	424	59	483	18	6	24
1959	728	38	766	441	58	499	15	5	20
1960	753	39	792	450	58	508	18	6	24
1961	743	39	782	467	58	525	15	6	21
1962	738	39	777	474	57	531	13	6	19
1963	725	43	768	452	61	513	12	6	18
1964	733	42	775	496	65	561	16	7	23
1965	712	40	752	489	61	550	20	7	27
1966	647	40	687	484	60	544	17	7	24
1967	646	42	688	484	61	545	13	7	20
1968	629	43	672	456	60	516	33	5	38
1969	602	44	646	445	62	507	27	2	29
1970	596	44	640	441	62	503	27	1	28
1971	618	45	663	455	60	515	17	1	18
1972	624	40	664	479	55	534	13	1	14

1/ Marketing year domestic disappearance substituted for burley and Maryland. 2/ Smoking and chewing tobacco and cigars; includes also exports of partially processed and shredded tobacco, classified as "bulk smoking".

TABLE 8. --Estimated leaf used by domestic manufacturers in cigarettes, by types of tobacco, averages 1939-58, annual 1958-59 to 1971-72 (July-June basis)

Year beginning July	(Farm-sales-weight)									
	Flue-cured		Burley 1/		Maryland 1/		Imported		Total leaf used	Production of cigarettes
	Quantity	Percent of total	Quantity	Percent of total	Quantity	Percent of total	Quantity	Percent of total		
Mil. lb.	Pct.	Mil. lb.	Pct.	Mil. lb.	Pct.	Mil. lb.	Pct.	Mil. lb.	Billions	
1939-43	445	58.2	243	31.8	23	3.0	54	7.0	765	244.1
1944-48	637	57.6	381	34.5	24	2.2	63	5.7	1,105	360.6
1949-53	731	58.0	424	33.6	24	1.9	82	6.5	1,261	412.6
1954-58	692	56.1	421	34.1	19	1.5	102	8.3	1,234	437.4
1958	698	55.3	424	33.6	18	1.4	122	9.7	1,262	479.5
1959	728	55.5	441	33.6	15	1.1	129	9.8	1,313	506.1
1960	753	55.5	450	33.2	18	1.3	136	10.0	1,357	518.0
1961	743	54.4	467	34.2	15	1.1	141	10.3	1,366	529.9
1962	738	54.0	474	34.7	13	1.0	141	10.3	1,366	543.7
1963	725	54.6	453	34.1	12	0.9	138	10.4	1,328	536.0
1964	733	52.7	496	35.6	16	1.2	146	10.6	1,391	562.4
1965	712	51.9	489	35.7	20	1.5	150	11.0	1,371	562.7
1966	647	49.4	484	37.0	17	1.3	161	12.4	1,309	572.8
1967	646	48.5	484	36.3	13	1.0	190	14.4	1,333	570.7
1968	629	48.5	456	35.2	33	2.5	178	13.7	1,296	573.0
1969	602	48.2	445	35.7	27	2.2	174	13.9	1,248	562.0
1970	596	47.6	441	35.3	27	2.2	187	14.9	1,251	585.1
1971	618	47.4	455	34.9	17	1.3	215	16.4	1,305	592.6
1972	624	47.6	479	36.5	13	1.0	196	14.9	1,312	615.6

1/ Burley and Maryland marketing year substituted.

TABLE 9. --Estimated leaf used per 1,000 cigarettes by domestic manufacturers, by types of tobacco, averages 1939-58, annual 1958-59 to 1971-72 (July-June basis)

Year beginning July	(Farm-sales-weight)						Cigarettes per pound of leaf
	Domestic types				Imported	Total	
	Flue-cured	Burley	Maryland	Total domestic			
Pounds	Pounds	Pounds	Pounds	Pounds	Pounds	Number	
1939-43	1.82	1.00	.09	2.91	.22	3.13	319
1944-48	1.76	1.06	.07	2.89	.17	3.06	327
1949-53	1.77	1.03	.06	2.86	.20	3.06	327
1954-58	1.58	.96	.05	2.59	.23	2.82	355
1958	1.46	.88	.04	2.38	.25	2.63	380
1959	1.44	.87	.03	2.34	.25	2.59	386
1960	1.46	.87	.03	2.36	.26	2.62	382
1961	1.40	.88	.03	2.31	.27	2.58	388
1962	1.36	.87	.02	2.25	.26	2.51	398
1963	1.36	.85	.02	2.23	.26	2.49	404
1964	1.30	.88	.03	2.21	.26	2.47	404
1965	1.27	.87	.03	2.17	.27	2.44	410
1966	1.13	.84	.03	2.00	.29	2.29	438
1967	1.13	.85	.02	2.00	.33	2.34	428
1968	1.10	.80	.06	1.96	.31	2.26	442
1969	1.07	.79	.05	1.91	.31	2.22	450
1970	1.02	.75	.05	1.82	.32	2.14	467
1971	1.04	.77	.03	1.84	.36	2.20	454
1972	1.01	.78	.02	1.81	.32	2.13	469

Source for tables on this page: estimates of Tobacco Division, Agricultural Marketing Service.

UNITED STATES DEPARTMENT OF AGRICULTURE
WASHINGTON, D. C. 20250

POSTAGE AND FEES PAID
U.S. DEPARTMENT OF
AGRICULTURE
AGR-101



OFFICIAL BUSINESS

PENALTY FOR PRIVATE USE, \$300

NOTICE

If you no longer need this publication, check here return this sheet, and your name will be dropped from the mailing list.

If your address should be changed, write the new address on this sheet and return the whole sheet to:

Tobacco Division
Agricultural Marketing Service
U. S. Department of Agriculture
Washington, D. C. 20250

Tobacco Inspection Services are available to all residents of the United States regardless of race, creed, or national origin. Violations should be reported to the Secretary of Agriculture, Washington, D. C. 20250