

## **Historic, archived document**

Do not assume content reflects current scientific knowledge, policies, or practices.





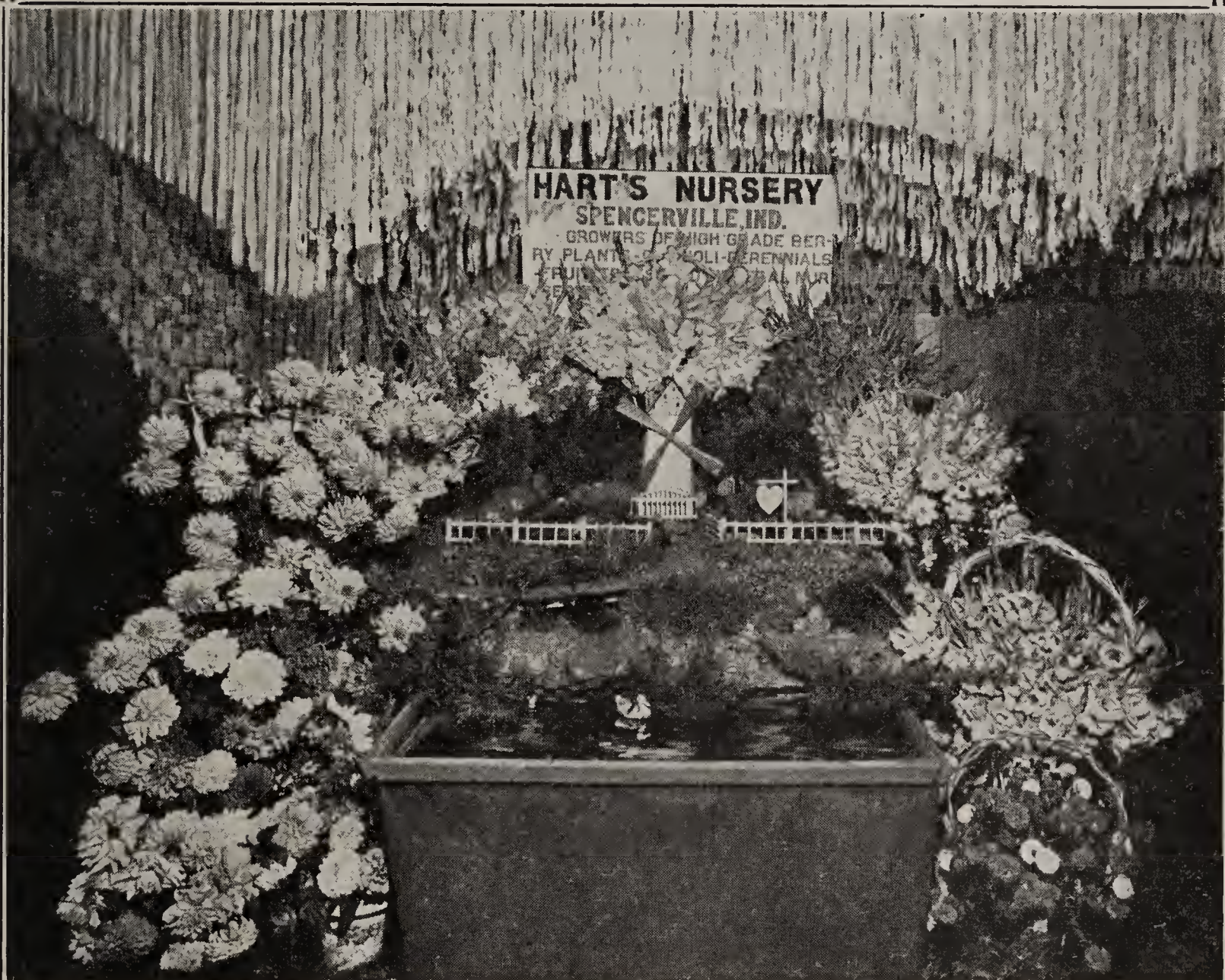
2.25

THINKED

# HART'S

## 1936 Catalog

SMALL FRUIT PLANTS, FLOWERS  
AND GENERAL NURSERY STOCK

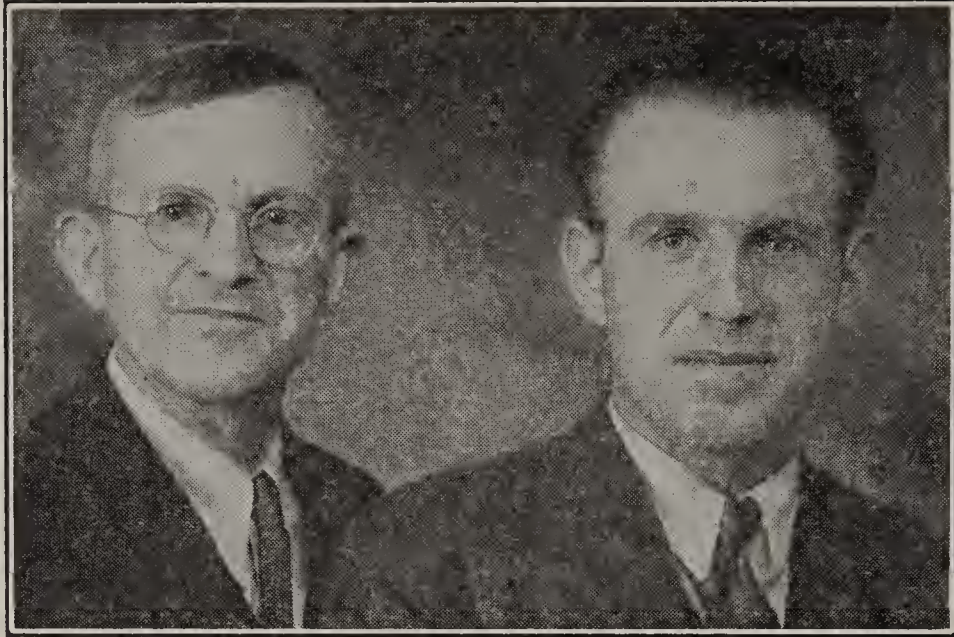


### A BLUE RIBBON DISPLAY

You are invited to visit our Nursery during September and October to see the Beautiful Flowers.

HART'S NURSERY, - - Spencerville, Indiana





CLYDE E. HART

KARL V. HART

## INTRODUCTION

DEAR CUSTOMER: We would liked to have sent you a catalog with pictures of fruit in their natural colors, but our customers know the quality of stock we send out and we feel that they would be more interested in buying good nursery stock for less money.

You will find all information and variety descriptions in this book accurate and dependable. We do not boost any variety of stock unless it will give good results, for we want you to keep ordering from us year after year.

In closing, we wish to extend our sincere thanks to the many customers who have so generously placed their orders with us in the past and made this business possible. We trust we may have the pleasure of serving you during the coming year.

Sincerely yours,

HART'S NURSERY.

## HART'S GUARANTEE

WE GUARANTEE every Tree, Plant, or Vine sold by us to be strong, vigorous and healthy, and to deliver them to you in good condition. If, for any reason, you are not absolutely satisfied with your stock when it is received, advise us at once, and we will gladly replace the items or refund your money. That's fair, isn't it?

## 1936 OUTLOOK

1935 proved to be one of the best years we have had for a long time for the growth of strawberry plants. We planted them early and the spring rains gave them a boost. They are exceptionally long rooted and heavy crowned, with healthy foliage and free from leaf rollers. If you have been bothered with this pest we would be glad to inform you of our method of control.

Raspberries did not do quite so well as in 1934, and plants are not so plentiful. Trees are scarce, especially the 2-year-olds, because of the drowth of 1934.

All other stock did fine last year and we have a good supply to offer to the trade this year.

We do not claim to be the largest producer of plants in this country, but when quality is considered we are willing to compare our plants with those raised anywhere.

By growing all our plants it is possible to give them our personal supervision from the time the plants are set, till dug for your order. Our plants are kept thoroughly hoed and cultivated, not a weed is permitted to grow. Every plant that goes out is fresh dug. We have pleased others—we can please you.





A Field of Our Premier Plants

## OUR BUSINESS METHOD

**I**N LOOKING at and studying catalogs for many years we are convinced that many statements made therein, are contradictory, and illustrations used, are over-drawn. We believe this is unfair to the buyer, and opposed to sound business methods.

Why lead people to believe you can make 12 to 15 hundred dollars profit from an acre of strawberries? We do not say this is impossible, but we do say it is improbable. Why not tell the buyer what he may reasonably expect if he gives his planting good care? Why say in your catalog that "Cumberland is the largest Raspberry grown," and in your description that "Logan is as large or larger than Cumberland"? This catalog was written with these thoughts in mind. You will not be misled.

## STRAWBERRY HISTORY

**S**TRAWBERRIES were first discovered in Virginia, and for a long period of time only "chance seedlings" were used as foundation stock by growers. That is, they went out among the hills and along the rivers and picked up the best wild varieties and cultivated them in their gardens. By clean cultivation they increased the size of these berries.

Gibson, formerly called Pocomoke, or Parsons Beauty, is one variety that has come down to us from these early small fruit growers.

Nurserymen no longer depend upon chance seedlings. The U. S. Department of Agriculture is now developing new varieties scientifically, which are far in advance of the old varieties.

Dorsett and Fairfax are two of the latest introductions which combines many of the good qualities such as size, shape, quality, and healthy foliage, which the old varieties often lacked.

## STRAWBERRIES

We list only Perfect Flowering Varieties. That is, you can plant all of our Strawberries alone and they will bear.

**WRITE FOR SPECIAL PRICES ON LARGE LOTS  
OF PLANTS**



# Strawberries

## PREMIER (Early)

**THE MOST POPULAR BERRY**—No strawberry in recent years has gained the popularity that has come to Premier. It has given more general satisfaction than any variety ever introduced—as a market berry it has outclassed all others, though not so well suited for long distance shipping as some other varieties.

When you come to earliness, size, shape, attractiveness, and quality it is hard to beat.

One essential in having a big crop of berries is to have good healthy foliage, without this no variety can produce a good crop. You will find the foliage on Premier just as green at the end of the picking season as at the beginning.

If Premier has any fault it is this: Many have difficulty in getting sufficient plants to make a wide row. They should be planted very early to overcome this difficulty.

We have a large acreage of Premier plants and you will make no mistake in planting liberally of this variety.

**PRICE:** 25 for 30c; 100 for 65c; 1,000 for \$4.00.

## SENATOR DUNLAP (Mid-Season)

**THE DARK COLORED BERRY**—Senator Dunlap has been a household word for many years. It is referred to as "That dark red berry." It is not, however, planted so extensively as it was a few years ago, but when it comes to quality and color no other berry can equal it.

Those who wish to grow berries for use in the home can find nothing that equals Dunlap.

The fault with this variety is that it is too productive of plants and in dry weather the berries have a tendency to become small as the season advances.

The plants should be planted much farther apart than such varieties as Premier, Cooper and Gibson, and the rows kept narrowed down by cutting off the new plants after the row is of sufficient width.

If you have never grown strawberries try Dunlap. You can not fail with them. We have a fine stock of plants of this variety.

**PRICE:** 25 for 25c; 100 for 50c; 1,000 for \$2.75.

## GIBSON (Mid-Season)

**THE HEAVIEST ROOTED PLANT**—Gibson is another of the old favorites. They make a wide row of dark green plants, the leaves look like they had been varnished. The berries are very large, handsome in appearance and very sweet. They are valuable for canning and preserving. The berries grow on very short stems, and should be mulched with straw so they may be kept clean.

No plant produces such long roots as Gibson, and they can be planted very late and will produce a fine fruiting row. They do exceptionally well on heavy ground.

**PRICE:** 25 for 25c; 100 for 65c; 1,000 for \$3.50.

## BEAVER (Early)

Beaver is a new variety which was originated in Wisconsin. It is a very hardy variety, producing a good fruiting row. The berries are of good size, bright red and very firm. It resembles Premier in many ways. In fact it is a cross of Premier and Dunlap. The plant growth resembles Dunlap, while the berry has all of the characteristics of the Premier, but not quite so large. It is a much better plant maker than Premier.

**PRICE:** 25 for 25c; 100 for 65c; 1,000 for \$3.50.

### 3 Strawberries Introduced by the U. S. Department of Agriculture

#### **DORSETT (Mid-Season)**

Dorsett is an especially healthy, vigorous grower, with big strong fruit stalks holding the fruit off the ground. It produces tremendous crops of great big, bright red berries which are firm and stay solid longer than other sorts. It has a rich flavor which is so far ahead of any other strawberry you ever tasted that you simply have to eat it to realize how good strawberries can be.

**PRICE:** 25 for 30c; 100 for 70c; 1,000 for \$5.50.

#### **FAIRFAX (Mid-Season)**

The biggest and sweetest strawberry grown today is the Fairfax. Because of its tremendous productiveness, rich flavor and huge size it is causing a sensation wherever planted. The large bushy plants have tall, stout stems, loaded with these delicious, mammoth berries. Fairfax is unusually firm. When picked, they are bright red—when dead ripe, a glossy dark red, and they maintain their firmness and fine flavor even when very dark.

**PRICE:** 25 for 30c; 100 for 70c; 1,000 for \$5.50.

#### **BLAKEMORE (Early)**

Blakemore is a cross between Premier and Missionary. It has a bright red color, tough skin and firm flesh, solid center and excellent somewhat tart flavor. Resembles Premier in shape, but slightly larger, and better in color.

**PRICE:** 25 for 25c; 100 for 65c; 1,000 for \$3.50.

#### **CATSKILL (Late)**

This berry is an introduction from the New York Experiment Station and is a scientific cross of Premier and Marshall. The plant growth is unusually vigorous and healthy with roots extending deep into the soil. The berries are slightly irregular, but they have a brilliant red color and a bright green cap. In tests made in the east it has outyielded every other variety. The quality, however, is not quite as good as that of Dorsett and Fairfax, but we predict it will become a favorite with berry growers, because of its great size, productiveness and healthy foliage.

**PRICE:** 25 for 35c; 100 for \$1.25; 1,000 for \$7.50.

The four varieties of strawberries listed on this page are all the newer introductions and are all worthy of a trial by everyone in the northern part of the United States. To make it easy for everyone to try them we are making this unusual offer. Pin a dollar bill to the coupon below, write your name and address on it, and mail to us; and we will send you 25 of each variety, 100 plants in all, and will include, as long as they last, a trial package of the valuable new watermelon advertised on page 9, and better yet we will post pay them to your door, and if you are not satisfied when you receive them, return them to us and we will refund your money.

#### **COUPON**

Send me 25 Dorsett, 25 Fairfax, 25 Catskill, 25 Blakemore, and a trial package of Early Northern Sweet Melon, described on page 9.

NAME -----

ADDRESS -----



## PEARL (Late)

Without doubt the latest berry in existence, often ripening its berries as late as the Fourth of July. It makes the longest runners of any variety I have ever known. The fruit is everything that could be desired. It is large in size, dark red to the heart, and very firm. Its prominent yellow seeds make it very attractive to the buyer. When Pearl begins to bear, most other varieties are off the market, and the price received is much higher than mid-season varieties.

**PRICE:** 25 for 40c; 100 for \$1.10; 1,000 for \$6.50.

## AROMA (Late)

Aroma, like Senator Dunlap, is one of the old stand-bys. It has been a great favorite in the south and middle states.

The berries are light red, always perfectly shaped. The calyx is dark green, giving it a pleasing appearance, making it a good seller.

It is an excellent shipping berry.

**PRICE:** 25 for 25c; 100 for 75c; 1,000 for \$4.00.

## CHESAPEAKE (Late)

The large berries of Chesapeake hold their size well to the end of the season. Flavor is unsurpassed. A leading market variety which sells at highest prices because of its lateness, size, quality, firmness and fine appearance. Strong, healthy foliage. Practically frost-proof because of its late blooming. To obtain best results, grow on rich soil or land that is well manured, and give good care.

**PRICE:** 25 for 35c; 100 for 90c; 1,000 for \$6.50.

## BIG LATE (Late)

This variety makes a strong, vigorous, upright growth. Under unfavorable conditions it does not always stand up sufficiently well to mature its entire crop of berries. The berries are very beautiful, being light in color, with a bright, shiny, red surface, and prominent yellow seeds. The berries are very fine in quality, but the blossoms are somewhat tender. Under favorable conditions Big Late yields are very satisfactory.

**PRICE:** 25 for 30c; 100 for 75c; 1,000 for \$6.00.

## Other Varieties

We can also supply the following varieties: Harvest King, Washington, and Red Gold. However, we do not recommend them. They all produce fine quality berries, but the leaves do not seem to stand up under the hot June sun and no plant can produce berries without sufficient foliage. We have some fine plants for those who may want them.

**PRICE:** 25 for 25c; 100 for 50c; 1,000 for \$3.00.

## SURPLUS STRAWBERRY PLANTS

In making our plantings we sometimes plant more of some varieties than we sell. Sometimes we dig more than are needed for the day's shipment—rather than destroy these we will sell these surplus plants to those who do not care for named varieties at \$2.50 per 1,000. They are first class plants and fresh dug. We do not label these, but call them Surplus Plants. **PRICES:** 500, \$1.50; 1,000, \$2.50.

(We reserve the right to withdraw this Special Offer at any time.)





**MASTODON (Everbearer)**

We hope you will plant some of our heavy-yielding strain of guaranteed true-to-name Mastodon.

Mastodon is a strong, vigorous grower, producing big, juicy, sparkling red berries of the most delicious flavor, with a bright green cap, and are firm enough to carry hundreds of miles in perfect condition and command top prices in any market. Mastodon begins fruiting 90 days after the plants are set and keep right on till hard freezing weather in the fall, fruit again with the standard varieties the next spring, and after a lay off of 2 or 3 weeks start fruiting again and with careful attention will produce for another season, or possibly longer. We have selected our plants for the past eight years and now feel we have the best Mastodon plants that can be found. We sold thousands of these plants last year and have a fine supply for the coming season.

In addition to its value as an everbearer Mastodon is a prolific spring bearer. If mulched well before spring these same plants will produce a top price spring crop of large, bright-colored lucious berries.

**PRICE:** 25 for 35c; 100 for 90c; 1,000 for \$6.00.

**GEM (Everbearer)**

This variety was discovered in central Michigan by Mr. Keplinger. The factors which make this berry outstanding are its size and its power to make new plants. Its plant making ability is equal to the Senator Dunlap. However, to make a big crop they should be planted very early, and the blossoms kept picked off until July 1st.

Berries are extra large, very firm and bright red all the way through. The flavor is the best you have ever tasted. Plant this Spring—Pick all summer. You will get back the price you paid for the plants, plus a big profit.

**PRICE:** 25 for 40c; 100 for \$1.20; 1,000 for \$8.00.

**BARGAINS**

**BARGAIN NO. 11**

100 Premier }  
100 Dunlap } \$1.00

**BARGAIN NO. 12**

100 Premier }  
100 Mastodon } \$1.25

**BARGAIN NO. 13**

25 plants of the 14 varieties of strawberries listed in our catalog, 350 plants in all, each labeled, for only \$2.75



# Successful Strawberry Culture

## ESTABLISHING THE PLANTATION

The preparation of the soil for growing strawberries should begin the year before the strawberries are to be planted. For the best results some hoed crop should be grown on the land the preceding season. This practice will help to eliminate weeds in the plantation and also to keep down white grubs which are very troublesome where sod is turned over and planted to strawberries.

Fall plowing is preferred to spring as it will leave the soil in better condition and permit getting on it earlier the following spring. In the spring, before setting the plants, the soil should be thoroughly disked and harrowed to get it into a good state of tilth.

In setting the plants, it is very important to have the crowns placed at the proper level. If the crown is set too deep so that the growing point is covered with soil, the plant is very apt to die. On the other hand, if the crown is set so shallow that the tops of the roots are exposed, they will dry out and the plant will die. It is desirable to have the roots well spread out in the planting and to make firm the soil about the roots so that no air spaces are left about any of the roots.

An excellent test to determine whether the soil has been properly firmed about the newly set plants is to take hold of a leaf and give a rather quick but light jerk. If the plant has been properly set the leaf will snap off, but if the soil has not been sufficiently firmed about the plant it will pull up.

## CARE THE FIRST SEASON

No item is more important in the successful strawberry plantation than thorough cultivation of the soil. This should start immediately after setting the plants and should be continued right up until cold weather checks the growth of the plants. The frequency of cultivation will depend somewhat upon the soil, but it should certainly be cultivated after every rain to conserve the supply of moisture.

In addition to cultivating between the rows, it is necessary to hand hoe along the rows after every cultivation. This helps to keep down the weeds and forms a dust mulch where the cultivator cannot reach, and it also helps one to locate and uncover plants which may have been covered up by the cultivator.

The strawberry is a shallow-rooted plant and feeds from a rather small area. Therefore, cultivation should be shallow and it is especially important to carry the cultivation as close to the plants as possible in order to conserve moisture and to aerate the soil in the region where the strawberry roots are feeding.

## MULCHING THE BED

As winter sets in it is very desirable to cover the plantation with an even coat of mulching material about three inches thick. This must be applied after it is cold enough so that the plants will not make any growth under the mulch, yet early enough to prevent alternate freezing and thawing of the ground if the winter comes on slowly.

This mulch serves several purposes, chief among which are:

To prevent alternate freezing and thawing during the winter and spring which would cause the plants to heave; to delay the starting of growth in the spring, thus reducing danger from late spring frosts; to conserve moisture and to keep the fruit clean.



NO. 14

**COMPLETE FRUIT COLLECTION**

12 Cumberland Black Raspberry  
 12 Latham Red Raspberry  
 50 Premier Strawberry  
 50 Mastodon Everbearing Strawberry

**ALL FOR \$1.75**

Not Prepaid

**EARLY NORTHERN SWEET WATERMELON**

Two years ago The Market Grower's Journal made some comments on a new Watermelon which the Minnesota Experiment Station had obtained from Russia. We secured 25 seeds from the Station and planted them. From these few seeds we grew more than a hundred fine melons. We chose some of the finest specimens for seed and planted one-fourth of an acre last year and harvested hundreds of the finest melons you ever saw.

The patch showed no sign of blight and the melons were ready for market ten days before any other variety.

Since we received this seed it has been named Early Northern Sweet. It ripens from 9 to 10 weeks from planting, weighs from 8 to 10 pounds, has a rich sugar flavor, red flesh, thin rind, resembles the Chilian in shape and color, but has brown seeds,

We do not have enough seed to sell in large quantities, but can supply small amounts to those who wish to try it. **Trial Package, 15c; oz., 25c.**

**HONEY ROCK MUSKMELON**

Muskmelons, usually referred to as "Cantaloupes" by the trade, are now being raised in Northeastern Indiana and Northwestern Ohio in large quantities, many growers raising a hundred acres or more. In going through this section you will find most of them raising the new variety called Honey Rock.

Honey Rock is not the earliest muskmelon grown, but is of the most striking appearance, best quality, most productive, and the best shipper of any variety grown. The color is yellow, overlaid with a heavy uniform netting, flesh is dark orange, and the quality is supreme. It matures its fruit in 85 to 90 days from planting.

Seed that is of pure strain, true to type, uniform and of high vitality is the first essential to the growing of a good crop of muskmelons.

We have several hundred pounds of seed grown by the above standard, and we want you to give it a trial this spring and convince you that Honey Rock Muskmelons are far in advance of all other varieties. This section being the home of the Honey Rock you can be assured of the pure strain.

**PRICES: oz., 15c; 1/4 lb., 40c; 1/2 lb., 75c; 1 lb. \$1.40.**

# Black Raspberries

**HOW TO GROW THEM.** The soil should be well drained, and not too heavy. Prepare the same as for any other berry plants, and plant in early spring. Should be planted in rows 7 feet apart, and about 3 feet in the row, which requires 2,000 plants per acre. For home use and in the garden they may be planted closer. Get the roots well below the surface and cut off the old stock a few inches from the ground. When the new growth reaches a height of about 18 to 24 inches, cut off the tip, which will cause them to throw out lateral branches, and stay more upright. The following spring, before leaf growth starts, trim all lateral branches back to about 8 inches in length, and leave about four good stalks to a hill. When through fruiting, cut out and burn all old fruiting canes.

## CUMBERLAND

Cumberland Black Raspberries have been a standard for years in judging other black raspberries, in fact more Cumberlands are planted than all other varieties combined. They are noted for flavor, size and productiveness, and always bring top price on the market. Cumberland has never failed to produce a big crop for us but one year, and that was caused by a very late freeze, but many latent buds brought some fruit. We have sold thousands of Cumberland Raspberry plants in the past and they give perfect satisfaction because they are healthy, heavily rooted, and fresh dug. We never dig our Raspberry plants in the fall because they often become heated in storage and fail to give good results for the planter. Try them—we guarantee satisfaction.

**PRICE:** 100 for \$2.00; 1,000 for \$14.00, not prepaid.

## NEW LOGAN

New Logan is one of the newer varieties but has been grown in Ohio for several years. The canes and berries resemble Cumberland in many respects. The advantages of this variety over others are that it is a week earlier than other varieties and is the most disease resistant of all. Those who have marketed know the advantage of earliness in any product—it brings a much higher price than the later varieties. The berries are large, jet black, and most delicious. Our advice to you is to grow some Logan along with Cumberland and profit by their earliness.

**PRICE:** 100 for \$2.25; 1,000 for \$15.00, not prepaid.

## KANSAS

This variety originated in Kansas and is one of the earliest Black Caps. It is being grown extensively in some parts of the country, but we recommend it highly for any locality. One of the advantages of this variety is it is very hardy and can be grown in any climate—it will not freeze back and has withstood temperatures of 30 degrees below zero without injury. They do not bear as heavy as some varieties, have a short fruiting season, but the berries are of immense size, very black and as sweet as sugar.

**PRICE:** 100 for \$2.00; 1,000 for \$14.00, not prepaid.

## PLUM FARMER

An extra early variety that produces well in favorable years. Plants are very healthy, unusually free from disease. The berry is grayish-black, very firm and attractive. Plum Farmer is extra early and always brings top prices. It tends to produce too many berries, especially in dry seasons.

**PRICE:** 100 for \$2.00; 1,000 for \$14.00, not prepaid.



We  
Sell  
500  
Raspberry  
and  
Blackberry  
Plants  
at  
the  
Thousand  
Rate



We  
Sell  
Any  
Variety  
of  
Raspberry  
and  
Blackberry  
Plants  
25 for 75c  
Prepaid

CUTHBERT

## Red Raspberries

### LATHAM

This variety originated in the hardy climate of Minnesota and is without doubt the most popular red raspberry grown. It is a strong, sturdy grower, healthy canes and foliage. Latham holds its shape, does not crumble, and has a most delicious flavor. Excellent for table use and jams. Those who are looking for a market berry will find Latham superior to all others. We guarantee our plants strictly true-to-name and free from disease. **PRICE:** 100 for \$2.00; 1,000 for \$15.00, not prepaid.

### CHIEF

When looking for an early Red Raspberry stop with this variety, as none other can equal it. Chief was originated in Minnesota; this proves its hardiness. Chief begins bearing before strawberries stop and bridges the gap in berry growing. The outstanding characteristics of Chief are earliness, large size, excellent flavor and disease resistance. The price of Chief plants in the past has been very high, but now they are very reasonable. Try them—they will please you.

**PRICE:** 100 for \$2.00; 1,000 for \$15.00, not prepaid.

### CUTHBERT

Cuthbert is an old stand-by and has been planted for years. It will always be popular. The plants are strong, vigorous growers, having a tendency to branch, which increases the bearing wood. The berries are somewhat cone-shaped, very dark red, and most delicious. They do not bear quite so freely as Latham nor are the berries so large, but when quality is wanted no variety can equal Cuthbert.

**PRICE:** 100 for \$2.00; 1,000 for \$15.00, not prepaid.

NO. 15

## RED RASPBERRY GARDEN COLLECTION

12 Latham  
12 Cuthbert  
12 Chief

} All for \$1.00 Postpaid



# Blackberries

## ALFRED

This variety has been on the market only a few years, but in this short length of time has become so popular in many parts of the country that it is fast replacing the old standard kinds. Alfred bears young, producing nearly a full crop of fruit the year after planting. It is a vigorous grower, producing strong, well branched canes, perfectly capable of carrying the big crop of fruit produced. It is perfectly hardy, and can be grown anywhere. The color is a glossy, jet black, and the flavor sweet and delicious.

**PRICE:** 25 for 75c, prepaid; 100 for \$1.50; 500 for \$6.50; 1,000 for \$12.00, not prepaid.

## ELDORADO

This is one of the leading commercial varieties that has long been popular on account of its hardiness, productiveness and freedom from disease, being especially immune to orange rust, the common enemy of all Blackberries. Berries are of good size, color, flavor and quality, holding up well for shipping, and as it fruits over a long season, produces heavy yields that insure a good profit to the grower. There are quite probably more acres of Eldorado now under cultivation than of all other Blackberries combined.

NO. 16

## BARGAIN

25 Cumberland, 25 Logan, 25 Latham (Red), 25 Blackberry

**All for \$2.75**

## RHUBARB

**MYATT'S LINNAEUS**—Those who have grown this variety will hardly recognize the old "pie plant." It is an early, tender variety without being tough or stringy, with a mild, sub-acid flavor. A dozen plants are enough for the average family.

**PRICE:** 6 for 75c; 12 for \$1.00.

## ASPARAGUS

**MARY WASHINGTON**—Wherever possible plant in rows rather than beds. Set out in fall or spring with crowns about three inches below surface of ground, 10 to 12 inches by 2 ft. apart. A bed once made will last for years if properly attended to and well fertilized. We offer only Mary Washington, as it has proven successful in every way, being rust resistant, early, and very tender. We offer heavy roots.

**PRICE:** 2 yr. old, 10 for 40c; 100 for \$2.00

## CURRANTS

**PERFECTION**—The latest introduction, being a cross between Fay's Prolific and White Grape, combining the best qualities of both. Berry bright red and large. The clusters average longer and the size of berry is maintained to the end of the bunch. In quality it is said to be superior to anything in the market today, being of a rich, mild, sub-acid flavor.

**PRICE:** Each, 25c; 10 for \$2.00.

## GOOSEBERRIES

**DOWNING**—A seedling of Houghton. Large and handsome, pale green berry; of splendid quality for dessert or cooking. Bush vigorous and exceedingly productive. Excellent for family use and profitable for market.

**PRICE:** Each, 25c; 10 for \$2.00.



## DEPENDABLE NORTHERN GROWN Fruit Trees

Why plant southern grown trees when you can get northern trees that will grow, budded from heavy bearing orchards. We are listing the best and most popular varieties. Our prices are less than half the usual prices asked by agents. All trees are 7/16 to 9/16 inch, 2-yr. old, and cannot be sent by Parcel Post; must be sent by Express.



JONATHAN

### APPLES

**DUCHESS OF OLDENBURG:** Summer. Yellow, streaked with red. Its white, juicy flesh and wonderful flavor have made it famous wherever apples are grown. A fine apple both for market and home use.

**YELLOW TRANSPARENT.** Early bearing variety that has proved both popular and profitable. Fruit large and yellow with crisp, sub-acid flavor.

**JONATHAN.** Late Fall. Brilliant red, fine grained, white, juicy flesh of excellent flavor. Medium to large size.

**DELICIOUS.** A Winter Apple. Brilliant dark red shading to yellow at the blossom end. Large to very large with white, tender, juicy flesh of wonderfully rich sub-acid flavor.

**C.RIMES GOLDEN.** Winter Apple; skin golden yellow; delicious, sparkling flavor that cannot be described. Tree very hardy and productive.

We have many other varieties of apples. Write for prices on large lots of apple trees. We can supply 1 yr. old apple trees at one-half the price of 2 yr. old trees.

### PEARS

**BARTLETT.** The most popular Pear for home use and market, a leader among canning Pears. Should be in every garden and orchard. Large, golden yellow with reddish blush on the sunny side.

We can also supply you with **Duchess, Kieffer and Seckel Pears.**

### PLUMS

**GERMAN PRUNE.** The most delicious of all Plums. Extra large size, often two inches in diameter. Early and abundant bearer. Combines hardiness, immense size, delicious quality, long keeping, beautiful color.

Also **Green Gage** and **Japan Plums.**

### SOUR CHERRIES

**LARGE MONTMORENCY.** Best late Sour Cherry, ripening about ten days later than Richmond. The fruit is extra large, bright red, firm and fine for shipping.

**EARLY RICHMOND.** Medium size, dark red; acid flavor. One of the most popular Sour Cherries, and is unsurpassed for cooking purposes. Very hardy. Ripens in June.

### SWEET CHERRIES

**BLACK TARTARIAN.** The popular, Sweet Cherry with dark brown, nearly black color. Extra large fruit. Flesh solid, fine flavor. One of the best Cherries for shipping and canning.

We can also furnish **Royal Ann**, a yellow sweet cherry.

### PRICES ON 2-YEAR-OLD FRUIT TREES

PRICES ON 2-YEAR-OLD FRUIT TREES	
Apples	.....each 75c; 10, \$6.50
Cherries, sour	.....each 65c; 10, \$5.50
Cherries, sweet	.....each 75c; 10, \$6.50
Plums	.....each 65c; 10, \$5.50
Pears	.....each 65c; 10, \$5.50
Peach	.....each 40c; 10, \$3.50
Apricot	.....each 75c; 2, \$1.40

Not Prepaid

Trees Must Be Sent By Express



## PEACHES

**ROCHESTER.** An unusually early free-stone peach of wonderful sweetness. Ripens in early August. Hardy and prolific. Keeps and ships well.

**ELBERTA.** Large to extra large. Free-stone. Golden yellow flesh, red at the pit, firm, juicy. Has no equal as a prolific bearer.

**J. H. HALE.** Yellow, extra large, globular; thick skin; colors to a rosy tint. Deep yellow, fine-grained, very firm flesh of excellent quality.

**SOUTH HAVEN.** A new sort with exceptionally fine flavor. Flesh yellow and sweet. Its showy exterior combined with its earliness makes it a real money-maker.

We can supply you with many other varieties of fruit trees.

## SUPERB APRICOT

The best Apricot on the market. Tree grows large and spreading and is immensely productive of beautiful orange colored fruit with firm flesh and excellent flavor. Two or more trees should be planted as they are only partly self-fertilizing.

Fruit Tree Prices on Page 13.



CONCORD GRAPE

## GRAPES

**CONCORD.** The Standard Commercial Grape. The fine old popular market variety and the leading commercial grape of today. A large, purplish black grape, very hardy and productive.

**NIAGARA.** The Leading White Grape. This is the best of all white Grapes, and is very similar to Concord in habit of growth and bearing. Fruit a light amber color, with light bloom.

**MOORE'S EARLY.** The Old Favorite Early Grape. Ripens about a week or ten days earlier than the Concord and is fully as good in quality. The berries and bunch are extra large, fruit is very sweet and fine flavored.

**CACO.** New, widely advertised Red Grape. Bears enormous bunches of unusually large berries of a rich wine-red and amber color. Flavor of the finest, very rich and sweet. Ripens early in September. Stock of this variety is limited. Order early.

**DELAWARE.** The red table grape is one of the most delicious of all grapes, but rather small.

### PRICES ON GRAPE VINES

Concord, Niagara, Moore's Early, and Delaware, 2 yr. old, each 15c; 10 for \$1.25; 25 for \$2.75. Caco, each 30c; 10 for \$2.50.

We can also supply Agawam and Beta at 25c each; 10 for \$2.00



# Roses

HARDY NORTHERN GROWN ROSES—ROSES YOU WILL LOVE



PAUL NEYRON

## Hardy Climbing Roses

**CRIMSON RAMBLER.** Very hardy. Blooms are of fiery red color and in clusters the whole length of the vine.

**DOROTHY PERKINS.** Pink. The best pink and a profuse bloomer. Double and sweet scented.

**DR. W. VAN FLEET.** Blossoms extra large. In color a delicate flesh-pink changing when full blown to a flesh-white shade.

**CLIMBING AMERICAN BEAUTY.** Flowers of large size, good form, of rich, red color passing to crimson. Very fragrant. Good foliage and absolutely hardy.

**BABY RAMBLER.** We have Baby Rambler. It is in bloom all the time, flowers in large clusters of bright crimson. It grows to a height of eighteen inches and hides the plant with its bloom.

**PAUL'S SCARLET.** The most intense red Rose that grows. By far the finest red climbing Rose with long strong canes. Never fades out in the hottest sun, retaining its vivid and brilliant color at all times.

---

**PRICE OF ROSES:** No. 1, Two-year-old,  
Each 30c, 5 for \$1.25.

---

## Hybrid Perpetual Bush

**PAUL NEYRON.** Peony rose. The largest rose of all. Blossoms of clear pink shading to rose. Plant erect, strong and heavy grower, blooming repeatedly.

**FRAU KARL DRUSCHKI.** Very large; perfect form and snow white; vigorous grower, a free bloomer.

**AMERICAN BEAUTY.** H. T. Deep pink, approaching crimson color. Exquisite form and fragrance, large blossoms. A prize winner.

**FRESIDENT HOOVER.** A new rose with large flowers of a very charming combination of cerise-pink, flame, scarlet, and yellow, with broad, thick petals, retaining this characteristic for days after the flowers have opened; very fragrant.

**SOUV. DE CLAUDIUS PERNET.** (Pernetiana). The most satisfactory yellow Rose ever produced. Flowers are of strong, sunflower-yellow, even deeper toned at center. In growth it is vigorous, erect and branching, with brilliant foliage and almost thornless stems.

**TALISMAN.** One of the most vividly colored roses ever introduced. Brilliant red and gold buds, opening to well-shaped, double bloom of scarlet-orange and rich yellow. It has fine green foliage and is a free bloomer.

**E. G. HILL.** New, best red Rose. Beautiful long buds of perfect form, and full, double, high-centered flowers of dazzling scarlet, shading to deeper velvety red as they develop. Exquisitely perfumed. Vigorous, free flowering habit.

**SCHWABENLAND.** New pink Rose unlike any other in color or in the splendid formation of its buds. Flowers are over 5 inches in diameter, with a high, spiral center, and peculiarly curled petals. Luminous rose-pink in color, carried on long, stiff stems.





SPIREA VAN HOUTTEI

## Northern Grown Shrubs

Shrubs here offered are all hardy, thrifty, two-year-old stock, 18 to 24 inches high. However, we can supply either large or smaller size. The larger size sells at somewhat higher price and the smaller much lower.

In case you are planting a large amount of Shrubs get our price first. We can save you money on a large order.

**SPIREA VAN HOUTTEI.** Finest of all the Spireas, giving a most graceful appearance when out of bloom. The flowers are pure white, and borne in dense clusters along the whole length of the branches.

**SPIREA BILLIARDI.** A grand shrub for group or mass planting. Has dense spikes of rose-pink flowers that crown sparsely twigged, erect branches. Very pretty and showy, also an excellent cut flower. Blooms from July to September. Grows 4 to 5 feet high. One of the most attractive of all the Spireas.

**SPIREA FROBELI.** Similar to the Anthony Waterer, stronger growth. Flowers pink.

**SPIREA ANTHONY WATERER.** A dwarf variety, growing 15 to 20 inches high, covered with large heads of crimson flowers. Foliage is very handsome, being variegated with creamy white or yellow.

---

### SPIREA PRICES

3 year old clumps, each 35c; 3 for \$1.00

18-24 in. clumps, each 25c; 3 for 50c

Not Prepaid

---

## HEDGE PLANTS

**AMoor RIVER PRIVET.** Hardest of all Privets. Foliage dark, glossy green, not subject to blight. Resistant to insect pests. Leaves retained far into the winter. White flowers followed by berries.

3 Cane, price, each 10c; 10 for 75c

Not Prepaid

**JAPANESE BARBERRY.** The Improved Thunberg's Barberry that is entirely free from rust and may be planted in any state. A beautiful plant, whether used for group planting, shrub masses, or hedges. Foliage bright green, turning to reddish bronze in fall.

12-15 in., PRICE, each 10c; 10 for 75c

Not Prepaid

**BERBERIS-BARBERRY.** (Red Japanese Barberry). This shrub fills a long-felt want. Red Japanese Barberry may be used for shrubbery border, for clumps, or even as a specimen shrub.

9-12 in., PRICE, each 25c; 10 for \$2.00

Not Prepaid



## SHRUBS

**ALTHEA.** (Rose of Sharon)—Handsome late summer blooming shrubs, coming into bloom when few shrubs are in flower. Large showy flowers. Red, Pink or White. State Color.

**BUDDLEIA.** Butterfly Bush. Will mature to full size the first year. Branches usually freeze back during the winter, but the new growth starts readily from the roots the following spring. 4 to 5 ft. high, with spikes of bluish violet flowers.

**ILE DE FRANCE**—New! Purple Buddleia. Rich purple color. Tall flower spikes often a foot tall. This variety greatly surpasses all other Buddleias for brilliance of color, grace of flower-spikes, and uniform habit of growth. Bloom from August to late fall.

**DEUTZIA.** Pride of Rochester. Large double rose-like flowers in June. It excels all other sorts in size of flowers, profusion of bloom and vigorous in habits.

**DOGWOOD.** A very hardy, thrifty shrub, doubly attractive because of its creamy white flowers in early summer. Red or yellow. State color.

**FLOWERING ALMOND.** Pink. Early spring-flowering shrub, usually in full bloom before leaves appear. Growth dwarf and bushy, compact, with slender branches. Fine plants to use in grouping or for lawn. Flowers are very showy, and produced in great abundance.

**FORSYTHIA.** Golden Bell. One of the earliest shrubs to bloom in spring. Branches are covered with golden yellow flowers before leaves appear.

**HONEYSUCKLE.** Tartarian. The best of all bush Honeysuckles, upright spreading branches, bright green foliage, bright pink flowers in May and June, followed by showy red berries.

**HYDRANGEA ARBORESCENS.** Hills of Snow. The flowers are in a large way similar to the familiar "Snowball" in appearance; conspicuously white and imposing.

**HYDRANGEA.** *Paniculata Grandiflora.* One of the finest and most popular shrubs grown. Blooms from August until frost, flowers in large panicles.

**KERRIA JAPONICA.** Flower, golden yellow and blooming profusely in the spring and more or less all summer. A striking flower and in the winter the slender branches are bright yellow. One of the most desirable shrubs.

**LILAC.** Persian Purple. A thrifty growing bush with slender leaves and deep purple flowers.

**MAHONIA AQUIFOLIA.** A hardy evergreen shrub having holly-like leaves. Can be used in evergreen and shrubbery planting and will do well in partial shade.

**PHILADELPHUS.** Golden Leaf Mock Orange. Dwarf compact habit with bright golden leaves that are most attractive. The blossoms are white.

**SNOWBERRY.** Common Snowberry. White. Small rose colored flowers in June and July, followed by large clusters of milk white fruits, which remain far into the winter.

**SNOWBERRY, RED.** Often called Coralberry. Similar to White Snowberry but with red berries clustering in ropes along the weighted down stems. Grows 2 to 4 feet tall.

**TAMARIX AFRICANA.** Tall shrubs, 8 to 10 feet high, with fine feathery foliage and small, bright pink flowers, in slender racemes in April and May. Splendid for planting in damp or other places.

**WEIGELA FLORIBUNDA.** A beautiful, comparatively new shrub, with large, showy red flowers appearing in profuse clusters and almost hiding the glossy green leaves. Commences blooming early in spring, and continues all summer.

**WEIGELA EVA RATHKE.** A charming new variety, reaching a height of 3 to 4 feet. Flowers are a brilliant crimson.

---

**PRICE:** 3 yr. old Clumps, each 35c;  
3 for \$1.00.

18-24 in., Each 25c; 3 for 50c.  
Not Prepaid.

---

Write for prices on small lining out shrubs.



## Climbing Vines

**AMERICAN BITTERSWEET.** Handsome, glossy foliage, and large clusters of beautiful, orange-crimson berries, remaining all winter. Charming for winter house decorating. 2-year, No. 1 vines, 30c; 3 for 75c.

**CLEMATIS PANICULATA.** Produces in late summer dense sheets of pure white flowers, extremely sweet-scented. Grows anywhere; free from insects. 2-year, No. 1 vines, 30c each; 3 for 75c.

**HONEYSUCKLE, HALL'S JAPAN.** Strong, vigorous vine, with pure white flowers changing to yellow. Extremely fragrant, and blooms all summer. 2-year, No. 1 vines, 20c each; 3 for 50c.

**BOSTON IVY.** One of the finest hardy climbers for covering walls and trunks of trees, as it clings firmly to any surface. Deep green in summer, bright red in autumn. 2-year, No. 1 vines, 35c each; 3 for 95c.



AQUILEGIA



TRITOMA

## HART'S Perennials HARDY FLOWERS

Your yard or flower garden is not complete unless you plant several beds of perennials. These flowers bloom year after year without replanting. They die down in the fall and send new shoots from the roots in the spring. Very little protection is needed to keep them from freezing out in the winter. Our plants are strong, healthy plants, and most varieties will bloom the first year and continue to do so as long as they are cared for. The varieties we list here are standard varieties that have proven satisfactory in this climate and are sure to satisfy.



Name	Foliage	Height	Flower	Time of Bloom	
AQUILEGIA	Dark Green	16 to 24 in.	Varied	May to July	
COREOPSIS	Light Green	1½ to 2 ft.	Yellow	All Summer	
CERASTIUM ARVENSE	Light Green	Dwarf	White	May and June	
CERASTIUM TOMENTOSUM	Silver	Dwarf	White	May and June	
DAISY ELDER	Light Green	14 to 18 in.	White	May and June	
DAISY SHASTA	Light Green	18 to 24 in.	White	June and July	
DELPHINIUM	Light Green	2 to 4 ft.	Blue	June to Sept.	
DIANTHUS DELTOIDES	Dark Green	8 to 12 in.	Red	May and June	
DIANTHUS PLUMARIUS	Light Green	12 to 16 in.	Varied	May to July	
FESTUCA GLAUCA	Grey	10 to 14 in.	White	Aug. to Sept.	
GAILLARDIA	Dark Green	14 to 18 in.	Orange	All Summer	
GYPSOPHELIA PANICULATA	Light Green	2 to 3 ft.	White	June to August	
GYPSOPHELIA REPENS	Light Green	Dwarf	White	June and July	
CARNATION	Light Green	12 to 16 in.	Red & Pink	June to Sept.	
HIBISCUS	Light Green	3 to 5 ft.	Pink & Red	July to Oct.	
IRIS PUMILA	Dark Green	Dwarf	Purple	April and May	
PHLOX	AMONEA	Dark Green	Dwarf	Pink	May and June
	SUBULATA	Med. Green	Dwarf	Pink	May
	ATHIS	Dark Green	18 to 24 in.	Salmon	July to Sept.
	B. COMTE	Dark Green	18 to 24 in.	French Purple	July to Sept.
	ECLAIREUR	Dark Green	18 to 24 in.	Dark Red	July to Sept.
	FERDINAND CORTEZ	Dark Green	18 to 24 in.	Scarlet	July to Sept.
	MARSHALL FRENCH	Dark Green	18 to 24 in.	Cherry Red	July to Sept.
	MILLIE HOBOKEN	Dark Green	18 to 24 in.	Bright Pink	July to Sept.
	RIJNSTROOM	Dark Green	18 to 24 in.	Crimson Pink	July to Sept.
	ROSENBERG	Dark Green	18 to 24 in.	Purple	July to Sept.
	R. P. STRUTHERS	Dark Green	18 to 24 in.	Carmine	July to Sept.
	SUNSET	Dark Green	18 to 24 in.	Pink & Red	July to Sept.
	WIDAR	Dark Green	18 to 24 in.	Purple & White	July to Sept.
WINDOT	Dark Green	18 to 24 in.	White & Red	July to Sept.	
PYRETHRUM	Light Green	12 to 16 in.	Varied	May to July	
SEDUM ALBA	Dark Green	Dwarf	White	June	
SEDUM COCCINEUM	Red	Dwarf	Red	July	
SEDUM FOSTORIUM	Blue Green	Dwarf	Yellow	August	
SEDUM GLAUCA	Blue Green	Dwarf	Yellow	August	
SEDUM STAHLI	Red & Green	Dwarf	White	June	
SEDUM COXCOMB	Blue Green	Dwarf	Yellow	June	
SEMPERVIVIVUM	Light Green	Dwarf			
THYME BLUE	Gray	Dwarf			
THYME PURPLE	Green	Dwarf	Purple	May to July	
THYME GREEN	Green	Dwarf	White	May to July	

PRICE of Above Perennials, Each 12c; 10 for \$1.00.

VERBENIA	Green	Dwarf	Purple	May to July
VIOLA	Green	Dwarf	Varied	May to July
ANERIA VERNA	Green	Dwarf	White	May to July
AJUGA RED	Red	8 to 12 in.	Red	August
AJUGA GREEN	Green	8 to 12 in.	White	August
TRITOMA	Green	12 to 18 in.	Orange Red	Sept. & Oct.
BLAZING STAR	Dark Green	3 to 6 ft.	Purple	July & Aug.

PRICE of Above Perennials, Each 20c; 6 for \$1.00.

## EVERGREENS

**PFITZER'S JUNIPER**—Extremely popular. Thrives anywhere. One of the few evergreens that will withstand considerable shade. Color is deep green, with a grayish cast. Should be in every evergreen planting.

**PRICE:** 15 to 18 in., each \$1.00

**SAVIN JUNIPER** — Dwarf evergreen growing 4 to 6 feet high with proportionate spread. Leaves are small and of a moss green color. Used chiefly as a fill or back around taller growing Conifers.

**PRICE:** 12 to 15 in., each \$1.00

**JUNIPER HORIZONTALIS** — Trailing Juniper, a spreading, low growing juniper, fine for foundation plantings and rock gardens.

**PRICE:** 15 to 18 in., each \$1.00

**IRISH JUNIPER**—Erect and slender, formal and columnar in form. Very compact, deep green foliage. When matured, this tree reaches a height of 6 to 7 feet, but it is never over 1½ feet in diameter. Popular for cemetery plantings as well as for landscaping home grounds.

**PRICE:** 15 to 18 in., each \$1.00

**SPINY GREEK JUNIPER** — A silver green color, pyramid type. Very different.

**PRICE:** 15 to 18 in., each \$1.00

**GOLDEN PLUME CYPRESS**—Feathery foliage of a yellow cast, contrasts well with a juniper planting.

**PRICE:** 15 to 18 in., each \$1.00

**DOUGLAS PYRAMID**—A fine foliage, unlike other evergreens. Light green, shaded to yellow color. Slow growing and compact.

**PRICE:** 15 to 18 in., each \$1.00

**BIOTO AUREA NANA**—Golden Bioto, a slow growing tree that is sure to be noticed because of its shade of foliage. The foliage grows like the pages in a book and are almost yellow in color, it makes a splendid contrast with darker shades in the background.

**PRICE:** 12 to 15 in., each \$1.00

**PYRAMIDAL ARBOR-VITAE** — Densely columnar type, compact and erect. Foliage is deep green. Height when matured, 12

to 15 feet. Most popular pyramidal tree on the market.

**PRICE:** 15 to 18 in., each \$1.00

**GLOBE ARBOR-VITAE**—Splendid globe shape. Maintains itself well under all conditions, and keeps the globe habit without trimming. Seldom higher than 3 feet. Dense, deep sea-green foliage.

**PRICE:** 12 to 15 in., each 75c.

**MUGHO PINE**—Genuine true dwarf type. Growth is dense and plants are thickly covered with heavy, dark green needles. Never grows over 4 to 5 feet tall, but spreads out 6 or more feet in diameter when full grown.

**PRICE:** 12 to 15 in., each 75c.

**GLOBE JUNIPER (Tom Thumb)** — A dwarf growing type. Never exceeds 1 ft. in height. Blue green color in summer, golden rust in winter. Good for rock gardens.

**PRICE:** 10 to 15 in., each \$1.00

**COLORADO BLUE SPRUCE**—Most popular and showy of all Spruces. Glistening silver foliage. Very hardy, good grower, withstands severe winters and excessive moisture, and is very easily transplanted. When dormant the tree acquires a somewhat greenish cast, but as soon as the new growth makes its appearance, clothing it in a deeper cast of blue, the full beauty of this glorious tree can be appreciated to the utmost.

**PRICE:** 12 to 15 in., each \$1.00

**DOUGLAS FIR**—Resembles the Norway Spruce in shape and size, but has gray-green needles.

**PRICE:** 15 to 18 in., \$1.00

**BLACK HILLS SPRUCE**—Very compact growing. Keeps its lower limbs and grows close to the ground if left unpruned. Makes a specimen if planted alone or in groups.

**PRICE:** 15 to 18 in., each \$1.00

**NORWAY SPRUCE**—Fine for windbreaks and hedges; equally good for groups or specimens. Tall, rapid grower. Most popular for Christmas trees.

**PRICE:** 15 to 18 in., each 60c.

If you want small evergreens, write for prices.



**ORDER SHEET**

**HART'S NURSERY**

Telephone 45-22

**CLYDE HART & SON**

Spencerville, Indiana

Name .....

Postoffice ..... State .....

R. F. D. .... Box ..... Street and No. ....

Express Office ..... Ship by .....  
(If different than P. O.) (How to Ship)

Date ..... Ship about .....  
(When to Ship)

If we are sold out of any variety ordered, may we substitute? (Yes or No) .....

No. of Plants	Name of Variety Wanted	Dollars	Cents

CUT OFF ON THIS LINE

**PREMIUM COUPON**

This coupon is good for 25 Blakemore or Beaver Strawberry plants or 12 Gladioli Bulbs when sent with an order of \$2.00 or more and five names and addresses are written below.

**CHECK YOUR PREMIUM BELOW**

- 25 Beaver Strawberry Plants     25 Blakemore Strawberry Plants     12 Glad. Bulbs

Write the names and addresses of five Market Gardeners or Truck Farmers who do not receive our catalog and might be interested in the purchase of our High Grade Nursery Stock. Write Plainly.

Names	Addresses

# Instructions to Customers

It has always been our desire to give every customer prompt, efficient service and you can aid us greatly in doing this if you will exercise care and accuracy in making out your order.

Our ideal location and soil enable us to start digging and shipping a week to ten days earlier than most northern nurseries. There are no storage cellars on our farms. All stock is fresh dug as needed.

**WHEN TO ORDER**—As there may be a shortage of the particular varieties you want it is best to make up your order and send it in as quickly as possible. Stock will then be reserved and shipped at specified time. Strawberry and Raspberry plants are a short crop in many localities this year and for your own protection this stock should be ordered early.

**HOW TO ORDER**—An order blank is provided with each catalog. However, any ordinary writing paper will do. In order to save unnecessary correspondence, always give complete name and full address, shipping point, etc.

**TERMS OF PAYMENT**—Our low prices for high quality stock are for cash only. Please do not request C. O. D. shipments. We will book early orders with a cash payment to show good faith, and balance may be remitted before shipment is wanted.

**REMITTANCE**—The safest way to remit is by postal or express money orders. Cash may be sent in registered letters and personal checks will be accepted if carefully made out. Please do not send stamps.

**OUR REFERENCES**—Farmers & Merchants State Bank, Spencerville, Ind., the Post Master, Express Agent, or any business house in Spencerville, Ind.

**SHIPPING SEASONS**—Spring shipping season usually begins in March and continues until June.

**HOW TO SHIP**—Large tree and cane plant orders can be shipped safely early in the spring by freight. Order shipment in March and trench or heel in the stock until you are ready to plant. For Strawberry plants and small orders of other stock, express or parcel post shipment is necessary. If not particular, tell us to ship "cheapest way."

**SAFE ARRIVAL GUARANTEED**—All stock guaranteed to reach you in perfect condition, as we use plenty of damp moss, waterproof paper and strong, wire-bound crates and boxes.

**IN CASE OF ERROR**—We are not satisfied until you are. As soon as stock arrives check it over carefully and in case of error notify us immediately and same will be corrected.

---

## NUMBER OF PLANTS PER ACRE

The following table shows the distances we recommend for planting different fruits:

	Distance between rows	Distance apart row	No. plants per acre
Strawberries	3½ ft.	1½ ft.	8,000
Raspberries	7 ft.	3 ft.	2,000
Blackberries	7 ft.	4 ft.	1,550
Grapes	10 ft.	8 ft.	550

---

## Certificate of Nursery Inspection

The Department of Conservation, Division of Entomology

No. 421

Indianapolis, Indiana, Date Dec. 5, 1935

This is to Certify that the nursery stock grown by Hart's Nursery (Clyde Hart & Son) located at Spencerville, Indiana, consisting of 19 acres, has been inspected by the undersigned or his authorized representative, on September 13, 1935, in compliance with Chapter 177, page 291, Indiana Acts of 1907, and has been found apparently free from destructively injurious insects and plant diseases.

This certificate covers General Nursery Stock and is valid, unless revoked for cause, until August 1, 1936.

Signed FRANK N. WALLACE,

State Entomologist.

---

**NON-WARRANTY** While we take every precaution to have all plants absolutely true-to-name, it is understood between the purchaser and ourselves that should any prove otherwise, we shall not be liable for more than the first cost of plants. We agree to deliver plants in satisfactory growing condition, but will not in any way be responsible for growth of same.



# Gladiolus

We are presenting for your consideration twelve of the most valuable gladiolus. We raise many varieties and can supply you with most any variety, but these twelve are outstanding for beauty and cut flowers. The bulbs we send you are not small sized, but range from 1¼" to 2". They are also free from thrips.



A prize winning bouquet of W. H. Phipps' gladiolus shown at DeKalb County Fair held at Auburn, Ind., October, 1934.

## ALPINE MIXTURE

This collection is made up of many varieties, all large No. 1 Bulbs. A wonderful collection of varied colors of beauty.

12 Bulbs for ..\$ .25

50 Bulbs for .. .55

100 Bulbs for .. 1.00

**MRS. F. C. PETERS.** A rich rosy-lavender, with a patch of bright crimson on lower petals.

**CAPT. BOYNTON.** A large flower; color, white suffused lavender, blotched deeper lavender in throat.

**BUTTERBOY** Large buttercup-yellow flowers, nicely spaced on spike.

**SOUVENIR.** Rich golden yellow Primulinus with medium-sized blooms on tall, thin, graceful stems. Fine for cutting. Early.

**W. H. PHIPPS.** The masterpiece in Gladiolus. LaFrance pink overlaid with light rose salmon lighter toward the center. Lower petals fairly striped and speckled with ruby. Flowers enormous. It is a tall grower and will open up to 20 blooms at once. Truly the wonder glad.

**GLORIANA.** Golden Salmon with clear yellow throat. A rose bud type. Stems are tall and makes most beautiful bouquets. It is a beauty and should be planted by all lovers of beautiful flowers. This variety will not disappoint you.

**MRS. LEON DOUGLAS.** Blooms of brightest begonia-rose striped with soft orange-scarlet.

**LOS ANGELES.** Has earned the name "Cut-and-Come-Again" Gladiolus. Loveliest showy shrimp-pink with orange-carmine markings in the throat.

**GOLDEN DREAM.** Very beautiful clear, deep yellow. Several blooms open at once. Very tall, straight, vigorous plant.

**MRS. DR. NORTON.** Immense flower, creamy white overlaid or tinted soft pink, end of petals showing a charming picotee of deeper pink.

**ORANGE QUEEN.** A lovely copper orange, one of the best for cut flowers.

**CRIMSON GLOW.** The name is the best description of its color. It has straight spikes of many flowers, which open 4 or 5 at once.

**ALICE TIPLADY.** A large, open flowered Primulinus. Saffron orange in color. The lower petals slightly lighter in shading. One of our most popular varieties.

**PEACE.** This is a large, late white. Has just a slight Tyrian rose blotch on the petals, is very tall and straight.

**GOLD EAGLE.** Beautiful ruffled variety of a clear deep yellow color.

**SHELIA.** Light coral red fading to flesh pink in throat.

**PRICE:** Each 7c; 12 for 75c; 100 for \$3.00, postpaid.



# From **HART'S NURSERY** Spencerville, Indiana

Sec. 562 P. L. & R.

## \$1.00 BARGAINS

Your Choice for Only \$1.00

Postpaid to your door.

ORDER BY NUMBER AND NAME

No. Name

- 1—300 Dunlap Strawberry Plants
- 2— 50 Asparagus Roots, 2 years old
- 3— 2 Gooseberry and 3 Currant Bushes
- 4— 10 Norway Spruce Trees, 2 years old
- 5— 12 Spirea Van Houttei, 2 years old
- 6— 5 Forsythia, 2 years old
- 7— 10 Concord Grape Vines, 1 year old
- 8— 12 Hardy Phlox, Mixed Colors
- 9—120 Glad Bulbs, Mixed Colors, No. 2
- 10— 20 Sugar Maple, 2 years old

NOTE the unusual \$1.00 Bargain on Page 5.

Return Postage Guaranteed

*Mrs. Newman*

To

NAME

*Next Home Business*

R. R. or St.

*Plant Industry*

Postoffice

*Washington*

State

*D. C.*

