

Historic, Archive Document

Do not assume content reflects current scientific knowledge, policies, or practices.

62.61

ROSES FOR THE GREENHOUSE AND GARDEN

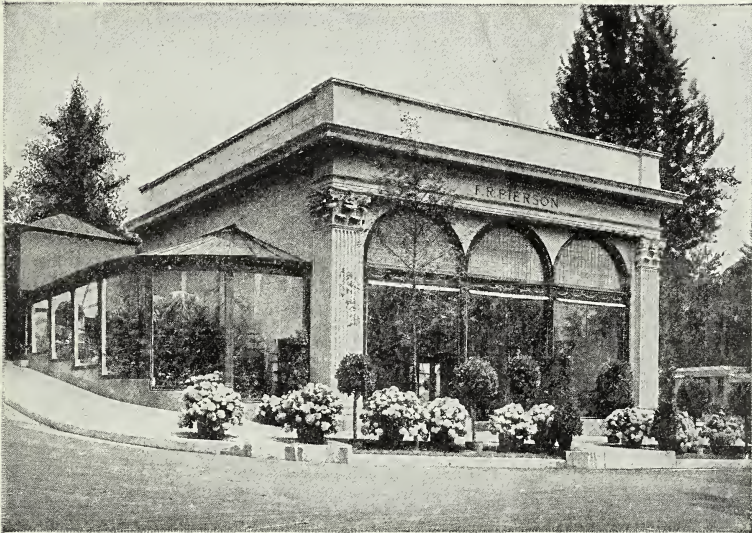


BEDDING PLANTS



FERNS, ETC.

LIBRARY
RECEIVED
★ APR 23 1930 ★
U. S. Department of Agriculture



View of our Office Building and Show Room, Tarrytown, N. Y.

SPRING, 1930

ESTABLISHED 1878

Telephone
Tarrytown 47 and 48

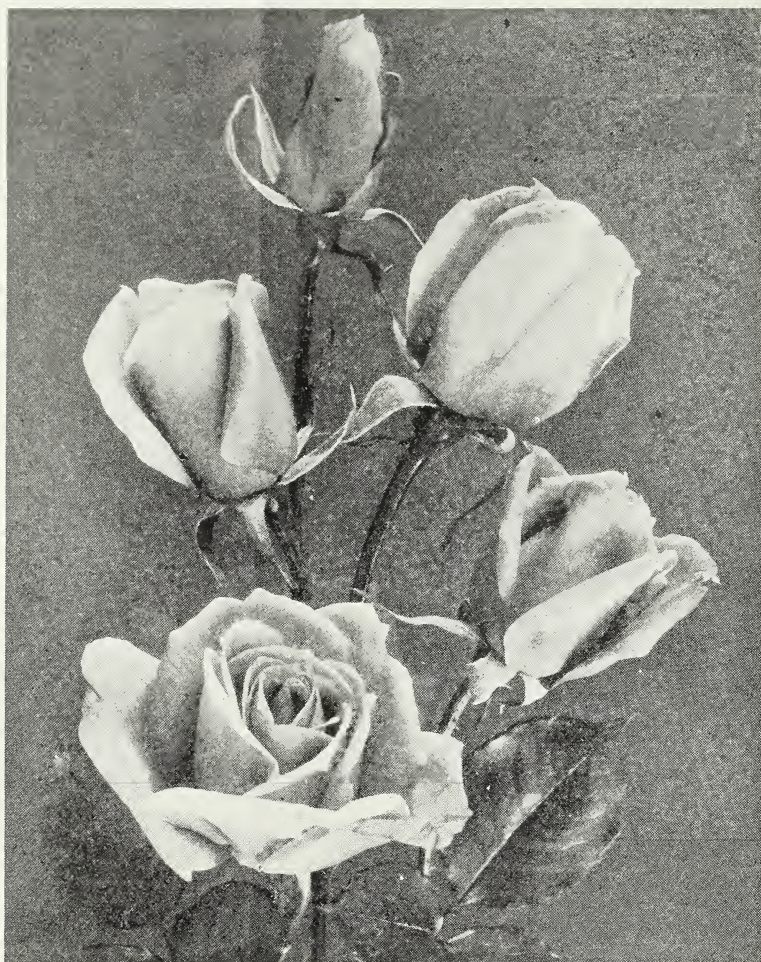
F. R. PIERSON

TARRYTOWN, NEW YORK

Catalogues
on application

Vegetable Seed Trials
N. Shoemaker

APR 25 1930



Photograph showing blooms of the new Rose—"President Herbert Hoover"

Roses for the Greenhouse and Garden

We can supply **grafted greenhouse grown roses, out of 4-in. pots**, of the following varieties for winter flowering. **These are the best varieties for winter flowering, and are grown especially for that purpose.** These varieties can also be planted out in the garden in May and June and will bloom this summer and will make large flowering plants for another year. **These varieties are hardy, but like all Hybrid Tea varieties, when planted outside, need protection during the Winter months in some parts of the country.**

Briarcliff. This variety is an improved Columbia, deeper in color, a pure pink. Bud is beautifully formed, long and pointed, every flower opening perfectly. Splendid grower, throwing long flowering stems.

Killarney, Double White. Flowers pure white and similar to the White Killarney but with more petals.

Above varieties, strong grafted plants, out of 4-in. pots (ready in May), 75c. each, \$7.50 per dozen, \$50.00 per 100.

- Joanna Hill.** A splendid new yellow rose. The flowers are saffron yellow, deepening to orange yellow at the center. The flowers are produced on strong stems without pinching and it is very productive. **4-in. pots** (ready in May), **\$1.00 each, \$9.00 per dozen, \$60.00 per 100.**
- Mignon, Sweetheart, or Cecile Brunner.** Flowers small, light rose pink. Fine for corsages.
Own root plants only. Prices same as grafted.
- Mrs. Calvin Coolidge.** This variety is similar in habit to Ophelia and Mme. Butterfly, but the flowers are deep golden yellow which deepens into a rich orange as the flower develops.
- Mrs. F. R. Pierson.** This is a wonderful red rose. A cardinal red or a very bright crimson. Buds long and pointed, of ideal shape and form. Exceedingly fragrant. Foliage dark green, with strong stems.
- Premier Supreme.** This variety is a sport from Premier. The color is better than Premier and is more perfect in form.
- President Herbert Hoover.** A wonderful new rose. It is remarkable for its vigorous growth, healthy foliage, strong stems, long pointed buds, productiveness and keeping qualities. The color of the flower is a charming combination of cerise-pink, flame, scarlet and yellow. Exquisitely fragrant. Awarded the Gold Medal at the International Flower Show in New York, March 1929, as the novelty rose of the year. **4-in. pots** (ready in May), **\$1.25 each, \$12.00 per dozen, \$75.00 per 100.**
- Rapture (Improved Butterfly).** Flowers salmon pink, very much brighter and deeper in color than Mme. Butterfly.
- Souvenir de Claudius Pernet.** Flowers large, very deep lemon yellow. **4-in. pots** (ready in May), **\$1.00 each, \$9.00 per dozen, \$60.00 per 100.**
- Talisman.** The flowers of this new variety are cupshaped and very highly colored. It is a combination of yellow, copper, scarlet and crimson. The base of the petal is yellow with shadings of scarlet and crimson toward the center and end of the petals. The flower gradually becomes an old rose pink with darker veinings as the flower develops. It is a very strong, vigorous grower and producer, with long, strong stems. **4-in. pots** (ready in May), **\$1.00 each, \$9.00 per dozen, \$60.00 per 100.**
- Templar.** A very fine red variety.
- Wilhelm Kordes.** This variety has long pointed buds opening to very large full flowers; is a rich capucine red overlaying a golden ground. It is a strong grower and a very fine variety.
Above varieties, strong grafted plants, out of 4-in. pots (ready in May), **75c. each, \$7.50 per dozen, \$50.00 per 100, except where prices are noted.**

Bedding Plants, Etc.

	Size of Pot	Dozen	100
ABUTILON			
Eclipse, yellow and green; Savitzii, variegated.....	3½ in.	\$3.00	
AGERATUM			
Fraseri, bright blue, semi-dwarf, fine.....	2¼ "	1.50	\$10.00
Fraseri, bright blue, semi-dwarf, fine.....	3½ "	3.00	20.00
ANTHERICUM			
Mandaeum, foliage narrow, leaves green on the edges with creamy white center.....	3½ "	6.00	
ALYSSUM			
Tom Thumb and Double White.....	2¼ "	1.25	8.00
ANTIRRHINUM			
Majus, separate colors	2¼ "	1.25	8.00
ARECA			
Lutescens, fine plants, 7-in. pots, \$8.00 to \$10.00 each.			

	Size of Pot	Dozen	100
ASPARAGUS			
Plumosus nanus	3½ in.	\$5.00	
ASTERS			
Branching, separate colors, white, pink, purple, etc.	2¼ "	1.25	\$8.00
BEGONIA, Flowering			
Luminosa, dark scarlet, bronze foliage.....	2¼ "	1.50	10.00
	3½ "	3.00	20.00
BELOPERONE			
Guttata. A very pretty plant that thrives well in a living room or conservatory. It flowers in long, drooping, heart-shaped Autumn shade and yellow panicles, flowers white with purple dots. 3½-in. pots, 50c each; 5-in. pots, \$1.00 each; 6-in pots, \$2.00 each.			
CALENDULA			
Ball's Gold, dark golden yellow; Ball's Orange, bright golden orange; Meteor, yellow striped orange; Orange King, deep orange.....	2¼ "	1.25	8.00
CANNAS			
Beaute de Poitevine, crimson tall; Buttercup, yellow, dwarf; Florence Vaughan, yellow, tall; Hungaria, rose-pink, foliage green; King Humbert, scarlet, foliage bronze; The President, bright, glistening scarlet, green foliage; Yellow Humbert, yellow, red throat; Venus, rose-pink	3½ "	3.00	20.00
CARNATIONS			
Laddie, flowers large salmon-pink; Maine Sunshine, fine yellow; Surprise, very fine light pink.....	2¼ "	3.50	25.00
Aviator, red; Benora, white streaked red; Betty Lou, dark pink; Matchless, white; Spectrum, a rich deep scarlet	2¼ "	2.50	16.00
CASTOR OIL BEAN	3 "	2.50	
CHRYSANTHEMUMS, large-flowered varieties			
Celebration, yellow, late; Charles Razer, white, medium; Dr. Enguehard, rose-pink, late; Early Frost, white; Edwin Seidewitz, incurved, pink, late; Major Bonnaffon, incurved, yellow, late; Gladys Pearson, apricot-orange, late; Mistletoe, blush white, late; Oconto, early, white; Pacific Supreme, early pink; Tints of Gold, early, bronze.....	2¼ "	2.50	15.00
CHRYSANTHEMUMS, hardy pompon varieties			
Autumn, Glintz, yellow, center of flower bronze, reverse of petals yellow and bronze; Bucena, light bronze, very free flowering, late, fine for Thanksgiving; Buhl, yellow, early, flower medium in size; Christmas Gold, flowers small, yellow, late; Diana, pure white; El Reno, bronze, button type; Golden Climax, reddish yellow; Golden Feather, flowers large, bronze changing to yellow as the flower develops, deeper than Source d'Or; Irene, white, early; Marianna, white, large, early; Morena, deep yellow, medium size, rounded flower; Mrs. Frank Wilcox (Mrs. Frank Beu), yellow and reddish bronze, medium size flower; New York, yellow tipped bronze; Pauline Wilcox, flowers red, tips of petals yellow; Rowenna, bronze yellow, button type; Source d'Or, deep yellow; Souvenir d'Or, yellowish bronze.....	2¼ "	2.50	15.00

	Size of Pot	Dozen	100
CHRYSANTHEMUMS, single varieties			
Charter Oak, yellow, late; Elizabeth McDowell, bronze, midseason; Mensa, white, late; Mrs. E. D. Godfrey, light pink; Mrs. W. F. Buckingham, early pink; Sunshine, anemone-flowered, bright yellow; Yellow Garza, anemone-flowered			
	2¼ in.	\$2.50	\$15.00
COBEA			
Scandens, blue, white			
	3½ "	2.50	
COLEUS			
Firebrand, red; Golden Bedder, yellow; President Harding, variegated; Trailing Queen, variegated; Verschaffelti, maroon			
	2¼ "	1.50	10.00
	3½ "	3.00	20.00
COSMOS			
Lady Lenox, white, pink			
	2¼ "	1.25	8.00
Large Early-flowering, white, pink			
	2¼ "	1.25	8.00
CRASSULA			
Arborescens, very ornamental, leaves thick and fleshy, 3½-in. pots, 75c each; 4-in. pots, \$1.00 each.			
CROTONS			
Assorted, 5-in. pots, \$2.00 to \$3.00 each.			
DAHLIAS —See pages 7 and 8.			
DAISIES			
English, pink, white; strong plants from ground....			
		1.00	6.00
Paris, or Marguerites			
	4 "	3.00	20.00
5-in. pots, \$1.00 each; 6-in. pots, \$2.00 to \$2.50 each; 8-in. pots, \$3.00 to \$4.00 each.			
DRACENA			
Indivisa, for vases, 6-in. pots, \$1.50 to \$2.50 each.			
EUONYMUS			
Japonica, green leaves, 5-in. pots, \$1.00 each. Yellow and Green, 5-in. pots, \$1.50 each.			
FERNS —See page 8.			
FICUS			
Elastica (Rubber Plant), 5-in. pots, \$2.00 to \$3.00 each.			
FUSCHIAS			
Black Prince, fine plants			
	3½ "	5.00	
" large, 5-in. pots, \$1.50 to \$3.00 each.			
" larger, 6-in. pots, \$3.50 to \$5.00 each.			
GERANIUMS			
Alphonse Ricard, scarlet; Beaute de Poitevine, salmon pink; Radio Red, fine dark red; Red Madame Barney, fine deep red, very free bloomer; Richard Gloed, fine rose-pink; Jean Viaud, double pink....			
	3½ "	4.00	30.00
Mme. Salleroy, variegated leaf; Rose, etc.....			
	3½ "	3.00	20.00
GLADIOLI			
Extra Choice Mixture			
		.75	4.00
Primulinus Hybrids, mixed			
		.75	4.00
Named Varieties, price list mailed on application.			

	Size of Pot	Dozen	100
HELIOTROPE			
Light Blue	2¼ in.	\$1.50	\$10.00
Light Blue	3½ "	3.00	20.00
Royal Fragrance, deep blue, large truss.....	3½ "	4.00	30.00
HYDRANGEAS			
French Varieties, fine flowering plants, in bud and bloom, April, May and June delivery, 5, 6 and 7-in. pots, according to number of flowers each, \$1.50, \$2.00, \$3.00 and \$5.00 each; larger plants, 10 and 12-in. tubs, \$7.50 to \$10.00 each.			
IVY			
English	3½ in.	5.00	30.00
German	2¼ "	1.50	10.00
KENTIA			
Belmoreana, fine plants, 6-in. to 8-in. pots, \$8.00 to \$15.00 each.			
LANTANAS			
Assorted, pink, bronze, yellow and trailing.....	4 "	4.00	30.00
LEMON VERBENA	3½ "	4.00	
LOBELIA			
Crystal Palace Compacta, dwarf, blue.....	2¼ "	1.25	8.00
MARIGOLDS			
Dwarf French, mixed; Tall African, mixed.....	2¼ "	1.25	8.00
PANDANUS			
Veitchii, green and white, 5-in. pots, \$2.00 to \$2.50 each.			
PANSIES			
Assorted, a choice strain, strong plants from ground		1.00	6.00
PETUNIAS			
Balcony, separate colors; Single Fringed, mixed; Rosy Morn, bright rosy pink; Rose of Heaven, brilliant pink	2¼ "	1.25	8.00
	3½ "	2.50	16.00
PHOENIX			
Roebelini, 9-in. pots, \$10.00 each.			
SALVIA			
Bonfire, semi-dwarf, scarlet; Splendens, scarlet....	2¼ "	1.25	8.00
	3½ "	2.50	16.00
SANSEVIERIA			
Laurenti, variegated leaved, single plants, 5 to 6-in. pots, \$3.00 to \$5.00 each; made-up plants, 8-in. pots, \$7.50 to \$10.00 each.			
TRADESCANTIA, for baskets, etc.			
Multicolor	3½ "	3.00	
VERBENAS			
Assorted colors	2¼ "	1.25	8.00
VINCAS, trailing, for baskets, etc.			
Variegated, strong plants	3½ "	3.50	25.00
ZINNIA			
Mammoth-flowered, white, yellow, rose, etc.	2¼ "	1.25	8.00

Dahlias

CACTUS AND HYBRID CACTUS

- Aurora.** Cream center, shading to amber and through tints of pink to white tips. **75c. each.**
- Garden Glow** (Hybrid Cactus). A wonderful variety. Flowers orange-red and yellow. **\$1.50 each.**
- Harpagon.** Flowers clear yellow; always covered with bloom. **\$1.00 each.**
- Jonkheer J. B. Von Tetz.** A very fine free-flowering white variety. **75c. each.**
- Kalif.** An enormous flower, often measuring nine inches in diameter, of perfect form. Flowers pure scarlet. **75c. each.**
- Nagels Roem** (Hybrid Cactus). Salmon pink suffused chamois. Long, stiff stems; excellent keeper. **\$2.00 each.**

DECORATIVE

- Champagne.** The flowers of this variety are of the largest size, of good form and distinct color, described by the introducer as "Golden Champagne" with chamois shadings. **\$1.25 each.**
- Couronne D'Or (Golden Crown).** Rich golden apricot; reverse of petals rosy carmine. **\$2.00 each.**
- D. M. Moore.** Dark maroon. **50c. each.**
- Eldorado.** A dwarf growing variety. Flowers immense golden-yellow. **\$1.50 each.**
- Emma Marie.** Flowers a lovely combination of bright pink and white; stems strong; very free flowering. **\$1.00 each.**
- Firebrand.** Flowers orange-carmine. Blooms well formed, large and carried on long, stiff stems. **\$2.00 each.**
- Florenz Finger.** Flowers lavender-pink. **\$1.00 each.**
- Fordhook Victory.** Flowers very large, well formed and carried on strong stems; a rich shade of Tyrian Pink. **\$2.50 each.**
- Jersey Beauty.** The finest pink dahlia. Flowers rose-pink, of the largest size, borne on long, stiff stems—a really wonderful variety. **75c. each.**
- King of Autumn.** Buff yellow suffused with terra-cotta, with good stem and foliage. **75c. each.**
- Lillian Baldwin.** A very beautiful variety. Flowers rose pink; splendid keeper; good stem and habit. **\$1.50 each.**
- Lucero.** Flowers bronze buff with a carmine tint and a deeper-tinted center. It has long stems and is fine for cutting. **50c. each.**
- Masterpiece.** The flowers are very large, salmon-pink, borne on long stems. **75c. each.**
- Millionaire.** The flowers immense in size; lavender shading to white. **75c. each.**
- Mrs. Carl Salbach.** An exceptional sort, a clean, vigorous grower of erect habit, producing flowers on unusually long, stiff stems, measuring nine inches across, solferino pink with white suffusion. **75c. each.**
- Mrs. I. De Ver Warner.** One of the finest decorative varieties. Color deep mauve-pink or orchid pink. The flowers are large, of perfect form. An early and continuous bloomer. **75c. each.**
- Patrick O'Mara.** Choice yellow; a good cut flower variety. **75c. each.**
- Pride of California.** Bright scarlet flowers of good size, produced on long, heavy stems. **50c. each.**
- Purity.** Flowers pure white, large. **50c. each.**

Dahlias

DECORATIVE—Continued

- Robert Treat.** A rich, pleasing American Beauty, rose color; plants are strong, healthy growers, producing flowers of the largest size on strong stems well above the foliage. **\$1.00 each.**
- Roman Eagle.** Golden-bronze, a real autumn shade; flowers large, borne on long stems well above the foliage. **\$1.25 each.**
- Sagamore.** Bright amber-yellow, shaded salmon-rose. **\$1.25 each.**
- Watchung Sunrise.** Rich golden yellow suffused with amaranth pink. **\$4.00 each.**

LARGE-FLOWERING OR SHOW

- A. D. Livoni.** Clear, beautiful pink of medium size, beautifully quilled, of fine form. Very free flowering. **35c. each.**
- W. W. Rawson.** A very fine Dahlia. Color white, shaded with lilac. **35c. each.**

Ferns

- NEPHROLEPIS ELEGANTISSIMA (The Pierson Fern).** A superb variety with long, graceful fronds.
- NEPHROLEPIS ELEGANTISSIMA COMPACTA.** The fronds are shorter than the *Elegantissima*.
Above two varieties: 3½-in. pots, 75c. and \$1.00 each; 6-in. pots, \$2.00 each; 8-in. pots, \$4.00 to \$6.00 each; 10 to 12-in. pots, \$7.50 to \$15.00 each.
- NEPHROLEPIS DWARF BOSTON.** A dwarf form of the well-known Boston. 6-in. pots, \$2.00 each; 8-in. pots, \$4.00 to \$6.00 each; 10-in. pots, \$7.50 to \$10.00 each.
- NEPHROLEPIS SMITHII (The Lace Fern).** The fronds are very fine and filmy on which account it is called *The Lace Fern*. 3½-in. pots, \$1.00 each.
- NEPHROLEPIS VERONA.** Similar to *Smithii*. 3½-in. pots, \$1.00 each; 6-in. pots, \$2.00 each.
- ADIANTUM CROWEANUM (Maiden Hair Fern).** Fine plants. 8-in. pots, \$6.00 to \$10.00 each.
- CIBOTIUM SCHIEDEI (Mexican Tree Fern).** Very valuable for house decoration. 8-in. pots, \$7.50 to \$10.00 each.
- CYRTOMIUM ROCHFORDIANUM (The Holly Fern).** A very desirable fern. Fine plants. 3½-in. pots, 50c. each; 6-in. pots, \$2.00 each.
- POLYPODIUM MANDAIANUM.** A very decorative variety. Fine plants. 5-in. pots, \$2.00 each; large specimen plants, 8 to 10-in. pots, \$5.00 to \$10.00 each.
- SMALL FERNS FOR FERN PANS.** Assorted varieties. 2¼-in. pots, 20c. each, \$2.00 per dozen, \$12.00 per 100; 3½-in. pots, 50c. each.

Telephone:
Tarrytown 47 and 48

F. R. PIERSON
TARRYTOWN, NEW YORK

Catalogues
on application