

6267
ESTABLISHED 1855.

SPRING CATALOGUE

OF NEW AND BEAUTIFUL

PLANTS

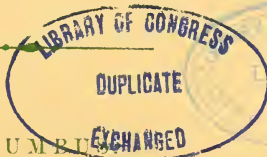
1873.

Dahlias, Verbenas, Petunias, Fuchsias, Phloxes,
Roses, Geraniums, Chrysanthemums, Etc.

14
GROWN AND FOR SALE BY

R. G. HANFORD,

COLUMBUS NURSERY, COLUMBUS, O.



COLUMBUS

GLENN & HEIDE, BOOK & JOB PRINTERS,
1873.

NOTICE.

We take pleasure in offering to our friends and the public, our annual catalogue of Green House and Bedding plants, with thanks for past favors, and a determination that no effort shall be wanting on our part, to please them in the future.

The list we offer embraces such plants, etc., as have been tested and found valuable, and which we are confident will please those who receive them. It has been our aim to avoid untried novelties, which, although coming with glowing descriptions, judging from our own experience, often cause disappointment to the planter.

Except in cases of urgency, orders are executed in rotation as received. We, therefore, respectfully invite our friends to anticipate the planting time, by sending their orders early. Where drafts, postoffice money orders, or money in registered letters are sent, it may be at our risk.

It will facilitate the dispatch of business, if with each order, the NAME and ADDRESS are WRITTEN DISTINCTLY and in full: also direct by what conveyance the articles may be sent. When left to us we will use our best judgment; but in all cases the goods are at the risk of purchasers after delivery at the Express Office or Railroad. All plants distinctly labelled, and packed in the best manner for safe carriage.

It will be to the interest of purchasers, where they are not acquainted with varieties, to leave selection to us, as we can, in such cases, very often send better plants.

ATTENTION IS CALLED TO OUR SPECIAL COLLECTION OF PLANTS, ETC., NOTED ON LAST PAGE OF CATALOGUE.

A LIBERAL COMMISSION ALLOWED TO THOSE WHO INTEREST THEMSELVES TO OBTAIN ORDERS FOR US.

NO CHARGE FOR PACKING PLANTS WILL BE MADE ON ORDERS AMOUNTING TO FIVE DOLLARS AND UPWARDS.

The Nursery and Green Houses are on South High Street, a short distance from the terminus of the Street Railroad. Our grounds, during the season of leaves and flowers, are very attractive, and, at any time, worthy a visit from the lovers of Horticulture and Floriculture. Open to visitors from 8 A. M. until 6 P. M., except Sundays.

R. G. HANFORD,
Columbus Nursery, Columbus, O.

512 X 5
423

COLUMBUS NURSERY ORDER SHEET.

—◆—

In sending orders, correspondents will please give their names in full, written distinctly, with their Post Office address, County and State. Remittances by Drafts or Post Office Orders are preferable to all others, where they can be had, as there is no possibility of loss. When these cannot be obtained, registered letters are surest to reach their destination. We guarantee the safe arrival of all packages by mail, when orders are accompanied by either a Draft, Post Office Money Order, or a Registered Letter. A convenient form for making up an order is respectfully presented.

R. G. HANFORD

Is requested to forward the following list of Articles to

Name,

Express Office,

Post Office,

County, State,

For which find amount inclosed:

Post Office Order, \$..... Cash, \$.....

Draft, \$.....

Date, 1873.

QUANTITY.	ARTICLES.	PRICE.
		\$

ORDER--Continued.

QUANTITY.	ARTICLES.	PRICE.
		\$

A FEW WORDS FROM OUR CUSTOMERS.

SMITH GROVE, KY. Feb., 23, 1872

Plants were received in good order, eight days after shipment, and gave entire satisfaction.

ALEDO, ILL., Feb. 23, 1872.

Plants arrived in good order by mail, and we were well pleased.

FALMOUTH, KY., March 3, 1872.

Box of plants came in good order, and gave entire satisfaction.

COVINGTON, TENN., March 4, 1872.

The box of plants reached me in good time, and opened well, fresh, and in such excellent condition.

DANVILLE, KY., March 4, 1872.

The plants came to hand in good condition; was much pleased with the way they were packed.

WARREN, OHIO, March 5, 1872.

The roses were received in fine order, and gave satisfaction.

HOLLY SPRINGS, MISS., March 10, 1872.

The plants reached me in fine condition, and are doing well.

SILVER CREEK, Ky., March 14, 1872.

I am delighted with the plants you sent, they are such fine ones, and look so nice and fresh.

MOOREFIELD, Ky., March 17, 1872.

The box of plants came speedily to hand, and they are truly in a splendid growing condition, and I am delighted with them.

ROME, GA., March 18, 1872.

The box of plants arrived in good order, and look very fine and healthy.

NEW ORLEANS, LA., March 19, 1872.

Box of plants arrived per Express, was pleased to note their good condition.

MEMPHIS, TENN., March 19, 1872.

Box of plants from you, received in excellent condition.

COAL RUN, OHIO, March 19, 1872.

I received the plants you sent per mail, and was highly pleased with them; the Fuchsias look as well as if just taken from the green house.

WASHINGTON, C. H., O., March 20, 1872.

The box of plants was received this day, and upon opening it we found every thing in the best possible order, and the quality unexcelled.

BOWLING GREEN, KY., March, 21, 1872.

I received the roses some days ago, they came all right, were well packed, and looked remarkably fine, and gave entire satisfaction.

MEMPHIS, TENN., March 22, 1872.

The box of plants sent, came to hand with dispatch, and all are in A No. 1 condition.

MUSCATINE, IOWA, March 22, 1872.

Plants arrived in fine order; I am perfectly satisfied in every respect.

RIPLEY, OHIO, March 22, 1872.

I have received the box of plants, and everything in it looks well.

RUSSELLVILLE, KY., March 22, 1872.

The box of plants came to hand yesterday, very nicely packed and in good condition.

DANCVILLE, TENN., March 23, 1872.

We were truly gratified in opening the box of plants, to find that every thing was safe, which is only attributable to the care and pains you take in packing. My flowers last year were truly worthy the admiration of every one.

SPRINGFIELD, Mo., March 25, 1872.

The box of plants arrived in most perfect order, not a leaf wilted.

NASHVILLE, TENN., March 25, 1872.

The plants reached this place safely and in good condition.

GALVESTON, TEXAS, April 1, 1872.

Plants received per mail; they were opened in our office, and their fine condition surprised every one.

HOLLY SPRINGS, MISS., March 25, 1872.

Everything I received from you is doing nicely; I never received plants that were in better condition.

DANVILLE, KY., March 25, 1872.

I received the box of plants you sent me, and found them nicely packed and in good condition, and I am very well pleased with them.

CAMBRIDGE, O., March 25, 1872.

The box of plants reached me in prime order, and are much admired by every one.

PORT ROYAL, KY., March 26, 1872.

Plants were received to-day being eight days after they were sent, but notwithstanding the long delay, they were in excellent condition; as fresh as when they left the green-house;

MURFREESBORO, TENN., March 28, 1872.

The plants arrived all safe and in good order.

BURLINGTON, IOWA, March 29, 1872.

I received the bulbs yesterday by mail in good order, and they proved to be very fine.

MADISON, Wis, March 27, 1872.

I have received the plants, and am pleased to say that every thing is satisfactory.

OWINGSVILLE, KY., March 26, 1872.

The roses were received this morning in good order, giving such satisfaction, that I send another order.

PARKERSBURG, W. VA., April 2, 1872.

Your plants have been received, and they are very nice indeed, and perfectly satisfactory.

TOPEKA, KAN., April 4, 1872.

The box of plants you sent arrived in fine condition.

GREENVILLE, O., April 4, 1872.

Plants received in first rate condition, not one plant withered, crushed or injured, and their healthy appearance the source of much pleasure.

MEMPHIS, TENN., April 5, 1872.

Box of plants received and the contents in excellent condition.

MONTICELLO, Ky., April 6, 1872.

Plants arrived yesterday in fine condition; I am delighted with them.

CIRCLEVILLE, O., April 8, 1872.

The box of plants came to hand in nice order, and are doing well.

HODGENVILLE, Ky., April 8, 1872.

The plants were received perfectly fresh, and gave entire satisfaction.

CHARLESTON, Mo., April 9, 1872.

Roses received in good order, not a leaf broken or wilted. No one could fail to be pleased with your manner of packing, and the promptness with which you fill orders.

OWENSBORO, Ky., April 9, 1872.

The box containing plants, &c., came safely to hand, in excellent order, and satisfactory in every respect. For care in packing, and promptness in filling orders, &c., I can most certainly recommend you.

ROME, Ga., April 9, 1872.

The plants and bulbs ordered from your nursery, reached me all in good order.

LITTLE ROCK, ARK., April 9, 1872.

Plants arrived in excellent condition. Many thanks.

NORTHERIDGE CENTER, MASS., April 11, 1872.

Plants arrived in splendid order.

BURLINGTON, IOWA, April 11, 1872.

The box of plants arrived in good order, and I am well pleased with them.

CALDWELL, O., April 8, 1872.

The plants you sent came in good order, and I was delighted with them.

LOUISVILLE, Ky., April 11, 1872.

The plants, bulbs, &c., I ordered from you were duly received in fine condition, and were satisfactory.

BETHEL, Ky., April 11, 1872.

The plants came to hand in due time, and were in fine condition.

OWENSBORO', Ky., April 13, 1872.

The plants arrived in the best possible condition, and gave the greatest satisfaction.

CAMPBELLSVILLE, Ky., April 15, 1872.

The plants have been received in excellent order.

RUSSELLVILLE, Ky., April 15, 1872.

The box of plants arrived in fine order. I have never received a box so neatly packed.

MADISON, IND., April 13, 1872.

The shrubs and plants came safe and are satisfactory.

NEW ORLEANS, LA., April 15, 1872.

Plants received, and appear to be in first rate order.

KNOXVILLE, TENN., April 15, 1872.

The plants ordered have arrived. On being opened they were found to be in good condition and looking very nice.

MUNFORDVILLE, KY., April 16, 1872.

Plants arrived in fine condition, and I am much pleased with them.

ATHENS, O., April 16, 1872.

Plants came in due season, in fine order.

MIDDLEPORT, O., April 17, 1872.

Plants have been received, they were in good order, and as fresh and looked as nice as the day they were packed.

PEORIA, ILL., April 18, 1872.

The plants came in fine condition, and more than gave satisfaction.

MARYSVILLE, O., April 18, 1872.

Plants came in fine order, could not be better.

LEXINGTON, Ky., April 19, 1872.

The trees and plants came in good order, and the whole lot is doing well.

OWENSBORO, Ky., April 20, 1872.

I received the roses all in fine order, not even a bloom wilted; and so nicely packed.

FRANKFORT, Ky., April 20, 1872.

I have received the box of plants, and they are all looking fresh and green, and gave entire satisfaction.

BERLIN, Wis., April 21, 1872

The plants sent by mail arrived last evening, looking fresh and beautiful.

VICKSBURG, MISS., April 21, 1872.

I received the plants yesterday in fine condition, and I am much obliged for the satisfactory manner in which the order was filled.

OWENSBORO, Ky., April 21, 1872.

I received my box of plants to-day by mail in good order, the neatest packing I have ever seen.

UNIONTOWN, Ky., April 22, 1872.

The box of plants came to hand all right, and we are very much pleased with them.

FLEMINGSBURG, Ky., April 22, 1872.

The plants arrived in fine condition.

MEMPHIS, TENN., April 22, 1872.

Box of plants received to-day in fine condition.

ROME, GA. April 23, 1872.

Plants per mail arrived this morning in fine condition.

BURLINGTON, IOWA, April 23, 1872.

The box of plants, &c., arrived in fine condition; they were packed with such care, that they would have opened in good order if sent to Oregon.

GRAND RAPIDS, MICH., April 23, 1872.

Box containing bulbs, &c., was received to-day in fine condition.

SPRINGFIELD, O., April 24, 1872.

The box of plants arrived yesterday in perfect condition and are most satisfactory.

VANLUE, O., April 25, 1872.

I received the plants to-day, all in fine condition.

CLARKSVILLE, TENN., April 26, 1872.

Plants arrived in most excellent condition, and gave entire satisfaction.

WELLINGTON, O., April 26, 1872.

Plants arrived in splendid condition, not a single one broken out of the 125. The plants are very choice and healthy, and the Verbenas the first I have ever seen.

KIRKSVILLE, Ky., April 27, 1872.

Plants, &c., ordered from you and shipped on the 19th inst., have arrived, out four days, but in excellent condition, looking fresh as if just taken up. My wife is perfectly delighted, not only with the condition of the plants, but the varied assortment which she left to your discretion.

PORTSMOUTH, O., April 27, 1872.

Plants duly received in first rate condition.

STUEBENVILLE, O., April 29, 1872.

Plants were received in good order; I was delighted with the fine collection.

JEFFERSON, IND., April 29, 1872.

Box by express arrived all right.

NATCHEZ, MISS., April 29, 1872.

Plants received to-day, were in excellent order.

HODGENVILLE, Ky., April 29, 1872.

I received plants in due time; never saw any thing so nicely packed; the Camellia was splendid.

LEBANON, Ky., May 1, 1872.

The plants you sent me arrived in due time, and in fine order.

GAMBIER, O., May 1, 1872.

Plants arrived this afternoon in very good order. They are fine plants, and more carefully packed than any I have seen.

LANCASTER, O., May 1, 1872.

Plants reached me in good condition and gave entire satisfaction.

NASHVILLE, TENN., May 2, 1872.

Plants reached me in due time and good order. Your prompt attention to orders and liberal dealing with your customers must ensure success.

MULBERRY, O., May 3, 1872.

I received my box of plants in good order, and am much pleased.

UNIONTOWN, Ky., May 3, 1872.

We have received the plants, and they give perfect satisfaction.

GREENSBURG, PA., May 3, 1872.

The plants reached me in good condition, and were all right; they gave entire satisfaction.

NICHOLASVILLE, Ky., May 3, 1872.

The large box of plants arrived safe; looking fresh and thrifty; they gave entire satisfaction.

DUNKIRK, O., May 3, 1872.

I received the plants to-day. They arrived in good order. Not a plant broken or withered. I never before received plants, in such fine order; they gave perfect satisfaction.

ATLANTA, GA., May 7, 1872.

All came well packed and are doing nicely.

SELMA, ALABAMA, May 7, 1872.

Plants you sent me gave perfect satisfaction.

MEMPHIS, TENN., May 7, 1872.

Box of Geraniums per express received yesterday, and prove to be beautiful plants in excellent condition.

INDIANOLA, IOWA, May 8, 1872.

I received the plants in good order, and I am well pleased.

LEWIS CENTER, O. May 8, 1872.

Plants were received in good time, were in excellent condition and gave the best of satisfaction, Verbenas especially fine.

VINCENNES, IND., May 8, 1872.

I am highly pleased both with the plants, their selection and their healthy condition.

NEW BEDFORD, PA., May 9, 1872.

We received our plants in due time, in the very best condition.

FITCHBURG, Ky., May 10, 1872.

Plants arrived safely and gave great satisfaction.

COVINGTON, Ky., May 10, 1872.

The box of plants arrived safely, but not until third day after shipment. They were, however, in most excellent condition, and gave perfect satisfaction.

MEMPHIS, TENN., May 10, 1872.

Plants came through nicely, every thing in good order.

ELYRIA, O., May 11, 1872.

The plants forwarded by you are received, all in good order, and I am perfectly satisfied with them, both as regards the plants themselves, which are all good sized and healthy plants, and also the packing; the plants being as fresh as when they started.

FRANKFORT, Ky., May 11, 1872.

The plants you sent, came to hand in splendid condition. I am very much pleased with them.

GEORGETOWN, Ky., May 13, 1872.

The box came to hand in good time, and the plants were in fine condition, and have done well since.

WARREN STATION, O., May 13, 1872.

I received the box of plants in good order, and was well pleased with them.

BRADRICKVILLE, O., May 13, 1872.

I have just received the nice roses in splendid order, and am well pleased with them, and will send quite a large order this fall.

KNOB NOSTER, Mo., May 13, 1872.

I received the plants I sent for in due time, and in good order.

BROWNSVILLE, O., May 15, 1872.

Plants received in good condition, and I am well pleased with them, as I have always been since I have ordered from you.

ST. PETER, MINN., May 15, 1872.

Plants came to hand all right, was well pleased with them.

ST. CLAIR, MICH., May 15, 1872.

Plants were received by yesterday's mail and gave perfect satisfaction.

MARION, O., May 15, 1872.

Your plants came to hand in good order; feel well pleased with them.

LOGANSPORT, IND., May 15, 1872.

Plants came to hand safely; gave entire satisfaction.

QUAKER BOTTOM, O., May 16, 1872.

I received my roses in fine order and was much pleased with them; I have received plants from several other florists, but yours are in the best condition.

GENOA, O., May 17, 1872.

The plants arrived to-day, and were in *splendid* condition. I am very well pleased with them.

MASSILLON, O., May 17, 1872.

The box arrived in good order; as for the plants, I have no words to describe the satisfaction conferred by them.

NASHOTAH, WIS., May 17, 1872.

Plants have reached us in perfect order.

DELAWARE, O., May 20, 1872.

I received my plants a short time ago, and in good order and was delighted with them; they far surpassed my expectations, were all without exception thrifty healthy looking plants; they were very nicely packed.

KENTON, O., May 20, 1872.

The plants were duly received and rendered entire satisfaction, all being in such beautiful, thrifty condition.

- DANVILLE, KY., May 20, 1872.
Plants received in good order.
- PERRYSVILLE, PA., May 21, 1872.
The box containing shrubbery ordered of you arrived here safely; everything gave entire satisfaction.
- ROCK ISLAND, ILL., May 21, 1872.
The plants arrived in splendid condition, and are blooming as though they quite enjoyed the journey.
- MARION, O., May 21, 1872.
The plants arrived in perfect condition, and gave entire satisfaction.
- SISTEESVILLE, W. VA., May 21, 1872.
The plants reached us last night in *perfect* order.
- PEORIA, ILL. May 21, 1872.
Our plants all came to hand in good order.
- FINDLAY, O., May 22, 1872.
Box of plants arrived safe and all right. I was very much pleased with your manner of packing; they were all nice and fresh, not wilted or bruised a particle, but are growing and blooming right along, as though they had not been moved at all.
- CRESTLINE, O., May, 22, 1872.
Plants by express reached me in excellent condition, this morning. You maintain your well earned reputation of honorable dealing.
- THURMAN, O., May 22, 1872
Box of plants was received several days ago and I am much pleased with them.
- CHARLES CITY, IOWA, May 22, 1872.
Plants came all right.
- INDEPENDENCE, IOWA, May 23, 1872.
Plants arrived in good order yesterday. I am pleased with them. They are not only fine plants, but were packed in the best manner of any I have seen sent by mail.
- FRANKFORT, KY., May 23, 1872.
I received my plants yesterday, and am very much obliged to you for your promptness in filling my order.
- FRANKFORT, KY., May 23, 1872.
The plants arrived safely yesterday evening beautifully packed, and in splendid condition.
- COLDWATER, MICH., May 25, 1872.
Plants came all right, and are satisfactory.
- ZANESVILLE, O., May 26, 1872.
I received the box of plants; they were in splendid order; much pleased with the collection.
- MORRIS, N. Y., May 27, 1872.
The roses came all right.
- LEETONIA, O., May 28, 1872.
Plants arrived very nice and look first rate.
- UPPER SANDUSKY, May 28, 1872.
Received the plants, all in good order.
- DYERSBURG, TENN., May 28, 1872.
The plants came to hand safely, in due time, and gave satisfaction.
- WARSAW, IND., May 30, 1872.
Plants came in good condition and were very beautiful.
- ALTOONA, PA., May 30, 1872.
Plants arrived in nice order.
- FINDLAY, O., June 1, 1872.
The plants came in fine condition, as they always do from your nursery, and are doing finely.
- EUGENE, IND., June 1, 1872.
Plants received in prime order, and pronounced by the ladies to be perfectly satisfactory.
- SELMA, ALA., June 2, 1872.
I am greatly obliged to you for the good condition of the plants. They came to hand as fresh, as if they had never been moved from your green-house.
- RUSSELLVILLE, KY., June 3, 1872.
Plants reached me in splendid order.
- POPLAR, O., June 4, 1872.
Plants have arrived in fine order, and I was very much pleased with them.
- MT. STERLING, KY., June 8, 1872.
It gives me much pleasure to say to you that my plants came in fine order, and are perfectly satisfactory in every particular.
- LA PORTE, IND., June 10, 1872.
Roses came to hand in good condition.
- JOLIET, ILL., June 10, 1872.
The plants were received in good condition and were perfectly satisfactory.
- BARNESVILLE, O., June 13, 1872.
I received my box of plants in fine condition, and I was pleased with your selection.
- HOPKINSVILLE, KY., June 15, 1872.
The plants were received on the 11th inst., in good order.
- CANTON, O., June 19, 1872.
Plants arrived in good condition.
- MC CONNELLSVILLE, O., June 25, 1872.
Plants sent were received in good order.
- MC CONNELLSVILLE, O., October 8, 1872.
Plants arrived in safety; much pleased with them.
- COLDWATER, MICH., October, 14, 1872.
The plants came all in *splendid* order for which receive my thanks; I have received plants from several florists, but I must say yours are the finest.
- ROME, GA., October 24, 1872.
I received the box of plants all right, they were as fresh as if just taken from the ground.
- GETHSEMANI, KY., October 30, 1872.
This is to inform you that Pomegranates, Myrtle &c., arrived safely.
- HAZELTON, PA., Nov., 4, 1872.
Bulbs received in good order, and I am pleased with them.
- BATTLE CREEK, MICH., Nov., 4, 1872.
Bulbs reached us to-day nicely packed and in good order.
- FINDLAY, O, Nov., 5, 1872.
Bulbs came in fine order, I am much pleased with them.
- SANTA BARBARA, CAL., Nov. 10, 1872.
We received the roses and plants all in due time and in splendid condition, considering the distance they came, we set them out immediately and they are *all* growing finely.
- NASHOTAH, WIS., Nov, 11, 1872.
The boxes containing bulbs and plants have arrived, and were very satisfactory.
- PADUCAH, KY, Nov., 12, 1872.
The plants sent arrived in most beautiful condition; not a leaf withered; it seemed marvelous.

NEW PLANTS

AND

PLANTS OF SPECIAL INTEREST.

Canna, or Indian Shot Plant.

Ne Plus Ultra—This is the finest Canna in cultivation, that we know of. A group of them growing in our grounds the past season, attracted the attention of numerous visitors. With liberal treatment, it will grow 6 to 7 feet high, with very large foliage of the richest shade of bronzy purple, and large brilliant crimson flowers. It should receive plenty of water in summer; in the fall it can be taken up and kept over winter, like a dahlia. Price 75 cents each.

Bihorelli—Similar to the preceding variety, with the foliage somewhat more shaded with green. Price, 75 cents each.

Erythrina, or Coral Plant.

The following two varieties are most striking novelties, of robust growth and free blooming habit, and in every way an improvement on the old varieties. They grow about 3 feet high, and produce their peculiar pea-shape flowers, on long spikes; very desirable.

Coteyana—Rich brilliant, crimson flowers.

Ruberiana—Deep crimson flowers, broader than *Coteyana*.

Price of young plants, 75 cents each; 1 year old plants, \$1 each.

Lagerstroemia Indica Alba—WHITE CRAPE MYRTLE.

This has been a great desideratum with all lovers of plants, for years. With its pure white flowers, it will be a good companion for the pink and crimson varieties, which bloom so abundantly in late summer and fall. Price 75 cents each.

Lagerstroemia Indica Rosea—PINK CRAPE MYRTLE.

Resembling the white in every respect, except color of blossom, which is bright pink. Price 50 cents each.

Panicum Plicatum Vittatum.

A fine ornamental grass, with beautiful plaited foliage, of graceful drooping form. It grows about three feet high, with leaves about three inches broad, which are striped with silvery white through the center and along the edge. Price 50 cents each.



CYPERUS PAPYRUS.

Cyperus Papyrus or Antiquorous.

The old Egyptian paper plant, very scarce, and undoubtedly one of the best decorative plants for bizarre effect. The above engraving gives but a faint idea of its great ornamental character. A well grown specimen will send up thirty or more straight, triangular shaped stalks, five to six feet high, each covered with a large tuft of bright green filaments, ten to twelve inches in length, and the mass twelve to eighteen inches in diameter, forming a plant of striking appearance. As the plant is at home on the shores of the Nile, it should be well supplied with water, to grow it to perfection. It can also be planted in fountains and water basins, but must be taken up and kept in the house in winter. Price \$1 each.

Gymnothrix Latifolia.

A stately and ornamental reed or grass-like plant, attaining a height of 7 to 9 feet, and in its mature growth, throwing up 30 to 40 erect stems, clothed with long reed-like leaves, 10 to 15 inches in length, and two in width, gracefully recurved at the upper part. Price 35 cents each.

Bouvardia Jasminoides.

A lovely variety of Bouvardia, of dwarf, free branching habit, of easy culture. It grows about 12 inches high, and produces numerous trusses of pure white wax-like flowers, which resemble the Jasmine, both in appearance and fragrance. It is equally valuable for bedding in the garden in summer, and for winter blooming in the conservatory. Strong plants, price 50 cents each; small plants, 25 cents each.

Eranthemum Sanguinolentum.

This charming little plant is well adapted for vases and baskets in partial shade. It has deep green leaves in pairs, about 3 inches long, veined all through with brilliant crimson; a very interesting plant. Price 50 cents each.

Cyperus Alternifolius.

A plant of peculiar formation. It produces many smooth, erect growing stems, about 2 feet high, which are crowned with a bunch of long, narrow leaves, giving it a close resemblance to an umbrella, for which reason it is frequently called the Umbrella Plant; it is desirable for garden decoration, and will also succeed well when grown in water. Price 50 cents each.

Peristrophe Angustifolia Aureo.

An elegant foliage plant equally useful for vases and baskets, in partial shade; leaves brilliant golden yellow, margined with bright green, about three inches long and one and a half wide; of low bushy habit, producing flowers late in the season, of a mauve or light violet color; one of the gems of the season. Price 30 cents each.

Reineckia Carneae Fol. Var.

A dwarf growing plant, of elegant appearance. The peculiar growth, with striking variegation, pure white and green, renders it desirable for pot culture or hanging baskets. Price 30 cents each.

White Oleander.

The old pink variety has been a general favorite for many years, and this is a desirable companion for it; of the same strong growth and habit, with semi-double pure white flowers. It is of easy culture, and can be kept over winter in a cellar, even without any light. Price 50 cents each.

Golden-Leafed Geranium—LUNA.

Among the Bronze or Golden-Leafed Geraniums, this is the best which we as yet have tested. The foliage is of a light-golden yellow, with a broad and distinct zone, or horse-shoe, of a bright chesnut brown occasionally shaded with red; flowers bright scarlet; unlike most variegated leafed Geraniums, this variety stands the hot sun quite well, and keeps its marking all summer. Price 35 cents each.



ERIANTHUS RAVENNÆ

Erianthus Ravennæ.

A very handsome ornamental grass, and a desirable plant for the lawn, somewhat resembling the Pampas Grass, but not as regular, and more loose in its outline; when fully grown, which will be the second or third year, its numerous flower stems will attain a height of from 9 to 12 feet. Will live out over winter if slightly protected. Price 25 cents each; extra size plants, 50 cents each.

Bouvardia Davisonii.

The flowers of this beautiful Bouvardia are produced in large clusters of pure white, slightly tinted with delicate blush, before being fully expanded. It is valued as a bedding plant for the garden, where it will commence blooming in August, and continue until frost; or, as a winter-blooming plant for the conservatory and parlor, where it will bloom without interruption all winter, if taken up before cold weather and properly cared for. Price 50 cents each.

Arundo Donax Variegata.

Among the many variegated foliage plants that we offer this season, there is none that we can recommend more highly for out of door planting than this splendid reed; the longer we grow it the better we are satisfied with its good qualities for its decorative purposes; it grows from six to eight feet high, with leaves from one-and-a-half to two feet in length, which are striped or ribboned in about equal parts, with pure white and light green, which variegation is retained all the summer; when planted in deep, rich soil and well supplied with water during the growing season, the growth will be luxuriant; it is a first-class plant in every respect, and an excellent companion plant for Cannas, Caladiums, or other ornamental plants; it can be left out in winter, by mulching with leaves or straw. Price for strong plants 75 cents each.

Abutilon Vexillarium Pictum.

This is similar in habit and growth to the well known Mesopotamicum, but much more attractive for its golden-spotted and marbled foliage, making it a fine plant for vases and large baskets; also useful as a winter blooming and decorative plant.

Price 25 cents each.

Begonia—WELTONIENSIS.

A new and exceedingly fine, shrubby variety, with small leaves of a delicate shade of green; stems and leaf stocks bright crimson; blossoms waxy pink, are produced in autumn; like all Begonias, it requires a shady position. Price 35 cents each.

Sanchezia Nobilis Variegata.

One of the most distinct and showy of the foliage plants; the leaves are about 12 inches long and 5 inches wide, of a rich glossy green, while the middle ribs and veins are of the most brilliant golden yellow; the effect is striking; it does best in a shady place. Price 60 cents each.

Coccolobia Platyclada.

A plant of very singular and interesting growth; stems and branches growing in flat and broad joints, of a half drooping habit; well suited for vases, baskets and rustic work; of easy culture. Price 25 cents each.

Jasminum Grandiflorum.

A beautiful white Jasmine, of exquisite fragrance; the flowers are produced in great profusion, blooming at least six months out of the twelve; it is of neat bushy growth, and a very desirable plant for the parlor or conservatory. Price 30 to 50 cents each.

**Ivy-leaved Geranium—L'ELEGANTE.**

A very pretty and ornamental variety; foliage bright green, with a broad band of creamy white around each leaf, which is often margined with pink; its pure white blossoms are produced in dense clusters, making it a very effective and most desirable plant. Price 35 cents each.

Veronica—BLUE GEM.

An elegant variety of shrubby Veronica, of a remarkably dense and dwarf habit of growth; grows 6 to 9 inches high, with small box-like leaves, and bright mauve colored flower spikes, which are produced in succession through the latter summer months. Price 25 cents each.

***Acalypha Tricolor.**

A very singular plant, with variegated foliage, introduced from New Caledonia. Its large leaves are irregularly mottled and blotched with deep crimson and bright red; novel and attractive. Price for young plants \$1 each.

Poinsetta.—PULCHERIMA.

A tropical plant of gorgeous beauty, the leaves that surround the flowers being on well-grown specimens, one foot in diameter, of the most dazzling scarlet. In a hot house temperature of 60 degrees it begins to bloom in November, and remains expanded until January. Price 50 cents each.

Phlox Perfoliata Verna.

A pretty little hardy herbaceous plant, with very small pointed leaves, and rosy lilac blossoms, which are produced so numerous in May, as to hide the foliage entirely; as the plant does not grow over three or four inches high, and multiplies readily, it is excellent for edging flower beds and pathways. Price 25 cents each.

Linaria Cymbalaria Variegata.

A variegated variety of the well-known Kenilworth Ivy; the leaves are nicely edged and marked with white and light yellow; it is of the same free growing, trailing habit as the old kind, and therefore very valuable for rock work, baskets and vases, in partial shade. Price 30 cents each.

Peperomia Maculosa.

This beautiful ornamental plant is a native of Brazil; the leaves, which are of a wax-like character, are of great substance, with bright green veins, the intervening space being white, giving the impression of burnished silver; it is of very easy culture, and will prove a very useful plant for rustic baskets and vases in shady positions. Price 30 cents each.

Udhea Pinnatifida.

A splendid ornamental plant; its large palm-shape leaves, supported by a strong stem, give it a very distinct aspect; planted in rich soil, isolated on the lawn, it will be much admired. Price 60 cents each.

Double Petunia.—WM. WHITE.

A desirable double Petunia of large size, white distinctly blotched with crimson, which variegation is constantly maintained in every flower; it is quite fragrant, a good grower and free bloomer. Price 25 cents each.

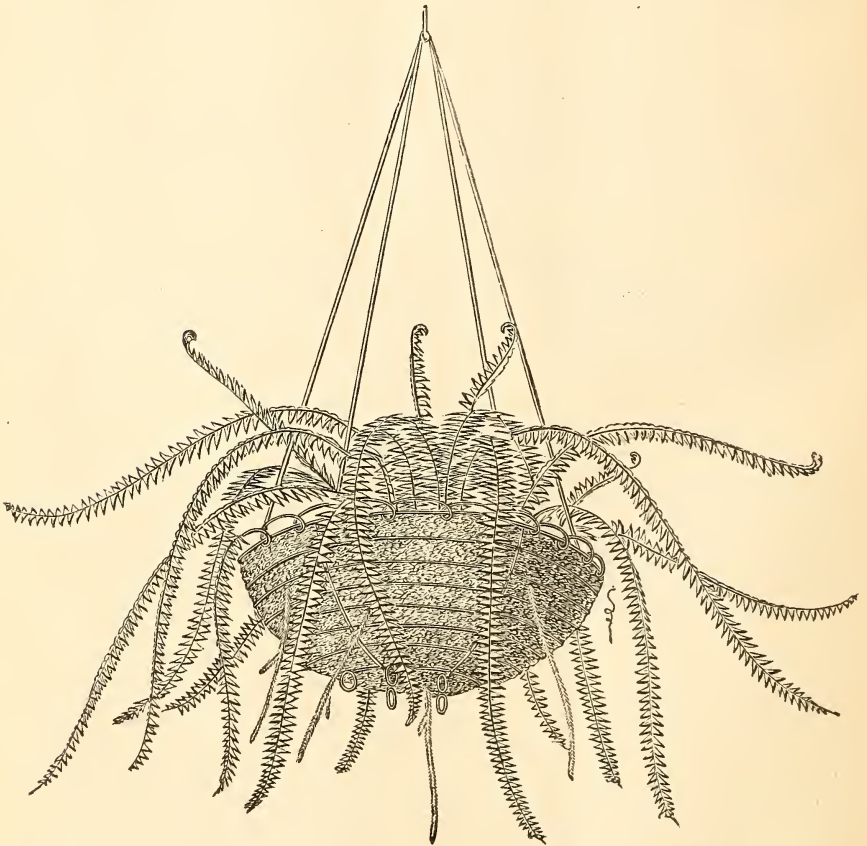
Panicum Variegatum.

This beautiful variegated grass proves to be one of the most graceful and ornamental plants yet introduced for Rustic Baskets, Vases, &c. The ground color of the

leaf is bright green, fully one-half being occupied by pure white stripes tinged with pink, forming a striking contrast. It is of free growth and graceful habit, drooping two or three feet from a basket in as many months. Price 25 cents each—\$2.00 per dozen.

Cestrum Parqui—NIGHT BLOOMING JASMINE.

A plant of strong, shrubby growth, with deep green, glossy leaves, and small greenish white blossoms, of a delightful odor, which is dispensed freely during the night only; a favorite plant of easy cultivation. Price 25 cents each.



Nephrodium Exaltatum—SWORD FERN.

A pretty Fern, of easy cultivation; the leaves or fronds, which are of a bright green and produced very numerous, will attain a length of two feet; it will, unlike most other Ferns, stand considerable sun, and is one of the most suitable plants for baskets and vases; it has a peculiar way of reproducing itself by runners, which will, when planted in moss baskets, come through the bottom in all directions and form new plants, thus making it very interesting and beautiful. Price 50 cents each.

Papaver Pulcherima—ORIENTAL POPPY.

A hardy herbaceous plant, of great beauty; in June it produces large blossoms of the most intense fiery scarlet, at which time it is one of the most conspicuous and attractive plants in the garden. Price 25 cents each.

Bousingaultia Variegata.

A pretty species of the well-known Madeira Vine, but of half shrubby growth, with no tendency to climb; the leaves are fleshy, green and white variegated. It stands the hot dry weather well, and is suitable for baskets and vases. Price 30 cents each.

***Tradescantia Vittata Repens.**

A new and very striking variety of the well-known Wandering Jew, growth and habit the same as the old sort, but the leaves are beautifully striped, green and white, some of them with one entire half pure white; a very desirable plant for baskets and vases in shady situations. Price 50 cents each.

Ampelopsis Veitchii.

A miniature foliaged Virginia Creeper, which clings to any building with the tenacity of the strongest Ivy, and producing in great profusion its dense foliage, of a glossy green, shaded with purple, so thickly as to form the most perfect coating wherever it is planted, the young shoots being quite purple. The leaves are sometimes divided into three parts, and are sometimes entire, turning red in autumn similar to the old kind. Small plants 25 cents each; large plants 50 cents each.

Achyranthus Aurea Reticulata.

The leaves are of a light green, beautifully marked with a network of golden yellow, with occasionally crimson blotches, while the stem is of a purplish carmine, making a pleasing contrast; suitable for the center of baskets and vases, and planting out in beds. Price 25 cents each.

Achyranthus Gilsonii.

This is an improvement on the well-known *A. Verschaffeltii*, being of a much brighter crimson color, and more dwarf and bushy in habit; a really showy and effective plant of the easiest culture. Price 25 cents each.

Achyranthus Cordata.

Similar in habit and color to *A. Gilsonii*, but with heart-shaped leaves. Price 25 cents each.

Salvia—SPLENDENS.

One of the most gorgeous of all our summer flowers, blooming abundantly throughout the season in dense spikes of brilliant scarlet. Price 25 cents each; \$2 per dozen.

Salvia—SPLENDENS GORDONII.

This differs from the old variety in being more dwarf, with dense flower spikes of brilliant scarlet, but is not so free a bloomer. Price 25 cents each; \$2 per dozen.

Salvia—PATENS.

Well suited to contrast with the above, the flowers being of the richest shade of blue. Price 30 cents each.

**Richardia Alba Maculata.**

A plant belonging to the same family as the Calla Ethiopica, with beautifully spotted leaves. The flowers are shaped like those of the Calla, pure white, shaded with violet inside. It is a deciduous plant, requiring to be kept dry in winter, and started like a Dahlia, in the Spring. Price 35 cents each.

Santolina Tomentosa.

A plant with fine, neat foliage of silver hue, bears sun and heat well, and can be cut or pinched into any shape desired; fine for edging, or baskets and vases. Price 25 cents each.

Sedum Telephium Roseum.

A splendid new variety of the Sedum tribe, hardy, grows about one foot high, flowers in large umbels from six to eight inches in diameter; in flower from August to November, or if taken up and potted the flowers last longer yet. Price 35 cents each.

Ivy Leafed Geranium.—INNOCENCE.

A plant with pretty Ivy shaped leaves, of a deep, glossy green and dark marking, with pure white blossoms; of trailing habit, well suited for baskets and vases. Price 35 cents each.

Variegated Ivy Geranium.—DUKE OF EDINBURGH. (*Holly Wreath*.)

This beautiful variegated Ivy Geranium has a broad margin of yellowish white, and sometimes light green around each leaf, the ground color being a bright green; it is a strong grower, of drooping habit, and the foliage quite large, making it a very desirable plant for all kinds of rustic work, baskets and vases. Price 35 cents each.

Fittonia or Gymnostachium.

This genus is among the most beautifully veined and reticulated of plants; in Summer they are quite easily cultivated, only requiring shade and moisture, to develop their beauty; they are of a low, half-trailing habit, and do well in baskets and rustic stands.

Argyoneura—Leaves bright green, with veins of the purest silvery shining white, shown in bold relief. Price 40 cents each.

Verschaffeltii—Foliage somewhat larger than the foregoing, of deep green, with veins varying from red to rich pink. Price 40 cents each.

Euphorbia Jacquiniiflora.

A well known hot-house plant, flowering in mid-winter, and from its wreathed style of flowering it is much used in holiday decorations; flowers orange scarlet. Price 25 to 50 cents each.

Hoya Carnosa—WAX PLANT.

A climbing plant for house culture, with dark green, thick leaves, bearing exquisite waxlike flowers. Price 30 cents each.

Funkia Alba Odora—WHITE DAY LILY.

A herbaceous plant of great beauty; it grows about a foot high, with luxuriant yellowish green foliage of large size, and produces in June and July, large pure white flowers of a delicious odor; it thrives best in partial shade, and although perfectly hardy, is much benefitted by being slightly protected with leaves or litter in winter. Price 50 cents each.

Yucca Filamentosa.

A very showy evergreen plant, perfectly hardy, thriving in any good garden soil, foliage twelve to eighteen inches long, resembles the palm or aloe; flower stems attain the height of five or six feet, covered nearly the entire length with bell-shaped creamy-white flowers; in bloom a long time. Strong flowering plants 50 cents each.

Canna Discolor.

An elegant plant for lawns or the center of large beds; foliage very large, beautifully veined with purple; grows six to eight feet high, and is very ornamental. Price 35 cents each.

**Abutilon Thompsonii.**

This beautiful variegated foliage plant has been pronounced one of the prettiest and most noted plants of the season. The ground color of the leaf is a bright green, which is shaded and mottled with yellow, having in many cases quite the appearance of mosaic work. It is of fine growth and easy culture, suitable either for the garden or conservatory. Price 25 cents each.

Double Feverfew.

A well-known double white daisy-like flower; flowering in the summer months. Price 20 cents each; \$2 per dozen.

Torrenia Asiatica.

A pretty plant for hanging baskets in sheltered and shady situations; it has tube shaped flowers about an inch long, of a rich shade of purple. Price 25 cents each.

Nierembergia Frutescens.

This new variety forms a very graceful rounded little plant; its upright stems branching at the top in every direction, and throwing out a profusion of thread-like drooping branchlets, covered from May to October with pretty white and purple flowers of a peculiar and striking character, very pretty and desirable. Price 25 cents each.



Macleya Yedoensis.

This charming-ornamental leaved plant has been recently introduced from Japan. It is a vigorous grower, and attains in one season a height of from four to five feet. The leaves are very large, of a glaucous green, with rosy yellow nervoses on the upper side, and are deeply and elegantly cut. Price 25 cents each.

Vinca Elegantissima—VARIEGATA.

A beautiful variegated trailing plant; fine for hanging baskets, vases, or the undergrowth of shrubberies. Leaves blotched yellow and green; flowers deep blue.

Price 25 cents each.

Madeira, or Mignonette Vine.

One of the finest plants for rapidly covering trellis work; flowers feathery white, with fragrance of Mignonette. Price 25 cents each.

**Achyranthus Lindenii.**

Foliage is very striking and effective; of a rich dark red color; each leaf having a conspicuous amaranth mid-rib. It is admirably adapted either for ribbon-rows or the edgings of flower-beds; its rich and attractive foliage always producing a striking effect. Price 25 cents each.

Lemon Verbena.

A favorite shrubby plant, finely lemon scented. Price 25 cents each.

Cape Jasmine—GARDENIA FLORIDA.

Large plants. Price 50 cents each; small plants 25 cents each.

Bouvardias.

Shrubby plants, with racemes of rose, crimson and scarlet flowers, blooming during summer, autumn and winter. Their dazzling richness of color and formation of flower make them the most useful plants we have for cut flowers or bouquets in winter.

Bouvardia Leianthe—Dazzling scarlet.

“ *Hogarth*—Deep carmine.

“ *Laura*—Light rose.

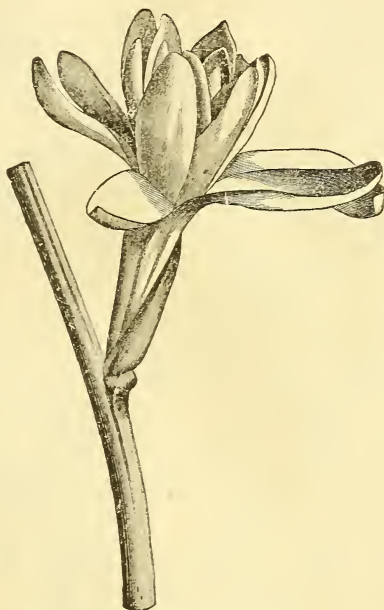
“ *Tryphilla*—Orange scarlet.

Price 25 cents each.

Gazania Splendens.

A beautiful bedding plant, blooming from June till October. Its novel combination of color—orange, white and brown—gives it a most pleasing appearance.

Price 25 cents.


Double Tuberoses—ALL FLOWERING ROOTS.

These much esteemed flowers are unsurpassed for elegance, purity of color and delightful fragrance. In order to give my customers the utmost chance in their cultivation, I offer none but *strictly first-class* roots this season.

Price 15 cents each ; \$1.50 per dozen.

Gazania Splendens Variegata.

A variety identical in flower with *G. Splendens*, but having the margin of each leaf distinctly margined with white. It is a plant of great beauty, when planted out in the open border, retaining its variegation in the hottest weather. As a basket plant, or for pot culture in the greenhouse, it is very valuable. Price 25 cents each.

Echeveria.

The Echeverias are a class of plants with thick, fleshy leaves, introduced from Mexico; they are of a rich and very peculiar appearance, of various colors and hues; like all succulent plants, they are well suited for rock work, and ornamental planting generally; they can be wintered in the house very easily, as they stand the dry atmosphere well, and at the same time, are ornamental.

Sanguinea—Long pointed leaves, of a deep red color. Price 25 cents each.

***Cobea Scandens Variegata.**

A luxuriant growing climber, useful for covering trellises, &c., has large greenish purple bell-shaped flowers; foliage green, delicately shaded and striped with a light silver color. Price 50 cents each.

Erythrina Crista Galli—CORAL PLANT.

Very ornamental and showy, producing a profusion of deep crimson pea-shaped flowers, on spikes eighteen inches long. May be taken up in the fall and wintered in a dry cellar, like a dahlia, and planted out again in the spring; in bloom nearly all summer. Price of young plants 40 cents each; 1 year old plants 75 cents each.

**Myrsiphyllum Asparagoides**—SMILAX.

There is no climbing plant in cultivation that surpasses this in the graceful beauty of its foliage, and its peculiar wavy formation renders it one of the most valuable of all plants for vases or hanging baskets, as it can be used either to climb or to droop, as required; in cut flowers, particularly for wreaths, it is now considered indispensable by all florists. Price 25 to 50 cents each.

Lychnis—VISCARIA PLENA.

A hardy herbaceous plant, with brilliant carmine flowers, blooming in May and June. A most desirable plant. Price 25 cents each; \$2 per dozen.

Akebia Quinata.

This is one of the most valuable climbing plants recently introduced; very hardy; a rapid grower; very pretty foliage, which leafs early; rich plum-colored flowers, pleasantly fragrant. Price 50 cents each.

**Astilbe Japonica—SPIRÆA JAPONICA.**

One of the most beautiful of all hardy herbaceous plants, blooming in dense spikes of pure white feather-like flowers; height of plant one and one-half to two feet. Very valuable for forcing for winter flowers. Price 25 cents each; \$2 per dozen.



Tritoma—UVARIA.

Very showy, late flowering, half-hardy herbaceous plant, lily-like foliage and tall stems, producing magnificent terminal spikes of dark red and orange-tinted flowers; requires a slight covering in winter. Price 50 cents each.

Tritoma—GRANDIS.

Similar to preceding, but of stronger habit, and somewhat taller flower and stem. Price 50 cents each.

Centaurea Gymnocarpa.

A desirable ornamental leaved plant. It forms a diameter of two feet, forming a graceful rounded bush of silvery grey; nothing is so well fitted to contrast in ribbon lines with dark foliage plants. As a plant for hanging baskets, it is also unsurpassed, its drooping, fern-like leaves being very effective. Price 25 cents each.

**Cyclamen Persicum.**

As an ornamental green-house plant, it is excelled by few, and its flowers as an ingredient in the formation of bouquets and baskets of cut flowers in winter, are not surpassed. Price 50 cents each.

Abutilon—MESOPOTAMICUM.

A pretty plant of spreading habit, growing from two to three feet in diameter, with bell-shaped flowers about an inch long, scarlet at the calix, with yellow petals; suitable for rustic baskets and vases. Price 25 cents each.

Begonia—SEMPERFLORENS—EVERBLOOMING BEGONIA.

A fine plant for shady situations, where it will grow about a foot high, with pretty, shining foliage and bright crimson wax-like flowers. Price 25 cents each.

Passiflora—INCARNATA.

Half hardy Passion Vine; dies to the ground every winter, but during the summer puts forth shoots twenty to forty feet long, covered with a profusion of beautiful purple flowers. Price 30 cents each; \$2.50 per dozen.

Euonymus—RADICANS VARIEGATA.

A pretty dwarf and compact growing shrub from Japan, of neat trailing habit. It grows eight or ten inches high, with shining foliage, variegated with silvery white; quite hardy. Price 30 cents each.

Ageratum—MEXICANUM.

A delicate blue tassellated flower, blooming during summer and winter. Price 20 cents each; \$2 per dozen.

Ageratum—IMPERIAL.

More dwarf in habit than the preceding, of a deep blue, and a profuse bloomer. Price 25 cents.

Salvia Splendens Variegata.

A variegated variety of the famous scarlet Salvia, growth and flowers are the same as the old kind, leaves variegated and striped with white. It sports considerably, and occasionally has but little of the white on it. Price 30 cents each.

Passiflora Trifasciata.

This very elegant Passion Vine is one of the most unique plants that have been introduced for some time; the ground color of the leaf, which measures four to five inches, is a rosy carmine, the central or variegated portion, has three shades—white, rose, and carmine; a desirable addition to any collection of pot plants—should be protected from the hot rays of the sun. Price 30 cents each.

Ivy-Leafed Geranium—ELEGANS FLORIBUNDA.

A very elegant variety of the Ivy-Leafed Geranium, forming a gracefully drooping growth for suspended baskets, vases, &c. It is of neat habit, producing profusely its lilac purple flowers—a most beautiful plant. Price 25 cents each; \$2.50 per dozen.

Ivy-Leafed Geranium—BRIGHTNESS.

Similar in habit to the preceding, but with larger leaf, and bright pink flower. Price 35 cents each.

Anemone Japonica—ALBA AND RUBRA.

Hardy herbaceous plants of great beauty, attaining a height of two feet, flowering in profusion from August to October. Alba, white flowering; Rubra, red flowering. Price 25 cents each - \$2.50 per dozen.

**Cuphea—PLATYCENTRA.**

Scarlet pendulous flowers; neat, compact habit; continuous blooming. Price 20 cents each; \$2 per dozen.

Libonia—FLORIBUNDA.

A neat growing green-house shrub, attaining a height and breadth of twelve or fifteen inches. The flowers, which are about an inch in length, are scarlet orange at the base, running into deep yellow at the top, in some degree resembling a *manettia*. It blooms in the greatest profusion from December to May. Price 25 cents each.

Variegated Rose Geranium—LADY PLYMOUTH.

This is a variety of the old favorite, rose-scented, with silver variegated leaves, of vigorous compact habit; a very beautiful and fragrant variety. Price 40 cents each.

Nierembergia—GRACILIS.

A pretty little bedding plant of spreading habit, with narrow leaves and pale blue cup shaped flowers, about an inch in diameter; blooming abundantly all summer.

Price 25 cents each.

Nierembergia—ALBA GRANDIFLORA.

Same as preceding, with pure white flowers. Price 25 cents each.

Lobelia Speciosa.

A pretty little plant of dwarf habit, with fine slender branches, particularly adapted for vases and baskets. Flowers deep blue; a profuse bloomer, and of easy culture. Price 20 cents each; \$2 per dozen.

Delphinium—FORMOSUM.

One of the finest hardy herbaceous plants in cultivation; grows from two to two and one-half feet high; flowers in dense spikes, of a most intense blue, with a large white center, blooming abundantly all summer. Price 25 cents each; \$2 per dozen.

Maurandia Barclayana.

Three varieties—purple, pink and white. These are pretty climbing plants with fine foliage and handsome tube shaped flowers, which are produced abundantly all summer. It will grow five to six feet in one season, and is suitable for a trellis, or hanging baskets and vases. Price 20 cents each; three varieties for 50 cents.

Tigridia.

A genus of Mexican bulbs, producing flowers of the most exquisite beauty, the flowers large, about four inches across, of singularly curious shape, and the color of each variety gorgeous and purely contrasted. No flower can exceed it in beauty; in bloom from July to October. In autumn take up the bulbs and keep them in a dry place, away from frost, until the time of planting in the spring. One and one-half feet.

Tigridia Conchiflora—Orange and golden yellow, spotted with black.

“ *Pavonia*—Richest scarlet, tinged and spotted with pure yellow.

Price 15 cents each; \$1.50 per dozen.

Lysimachia Numularia—MONEYWORT.

This old and well known plant is indispensable for drooping around the edges of baskets or vases, its graceful trailing stems often falling four feet from the edges of the basket or vase. It is attractive at all times, but particularly so in June when covered with rich yellow flowers. Price 25 cents each.

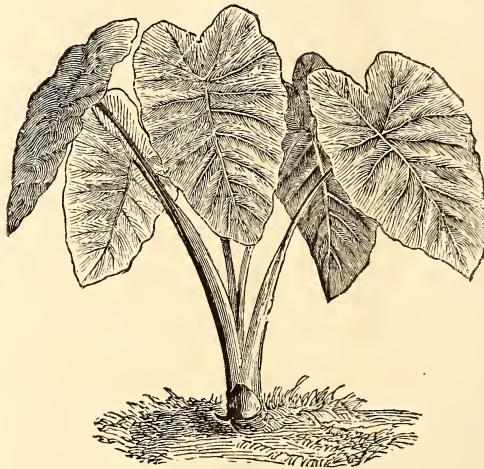
Kenilworth Ivy.

Beautiful delicate foliage, with small pink flowers; trailing plant; very appropriate for baskets. Price 20 cents each; \$2 per dozen.

Apple Scented Geranium.

A variety of Geranium of low bushy growth, with a delicious spicy apple-like fragrance; one of the best of the fragrant class. Fine strong plants.

Price 25 cents each.

**Colocasia (Caladium) Esculentum.**

One of the most beautiful and striking of the *Ornamental Foliage Plants* in cultivation, either for culture in large pots or tubs, or for planting upon the lawn. It will grow in any garden soil, and is of the easiest culture. When of full size it stands five feet high, with immense leaves, often measuring four feet in length by two and one-half in breadth, very smooth, of a light green color, beautifully grained and variegated with dark green. Grows best when well supplied with water.

Price 50 cents each.

Japan Gold Striped Honeysuckle.

A slender growing variety, with gold-veined leaves, suitable for baskets and vases. Price 25 cents each.

Dielytra Spectabilis.

This beautiful plant increases in popularity every year, and is certainly one of the finest herbaceous plants in cultivation. Delicate green leaves and long elegant sprays of most beautiful heart-shaped pink-flowers, edged with silvery white. Strong flowering plants. Price 25 cents each.

Dielytra Eximia.

A smaller variety of the preceding; finely cut foliage, and a profuse bloomer, being in bloom nearly all summer. Price 25 cents.

Caladiums --IN VARIETY.

These are among the finest of ornamental foliage plants; for richness of color, and variety of marking, they are not excelled, if equaled, by any other plant. They grow from one to two feet high, with large shield or heart-shaped leaves, which will in some varieties grow 12 to 18 inches long by 6 to 9 inches wide, assuming almost every imaginable color in their variegation of spots, veining and marbling—some varieties having leaves nearly all crimson, some spotted, red and white on green ground, others nearly all white, etc. They thrive best when freely supplied with water, and while they stand the sun quite well, they show their colors best when partially shaded at noon. Price 75 cents each; \$6 per dozen, well assorted.

Glecoma Rotundifolia Variegata.

A pretty trailing plant, with green and yellow blotched and variegated leaves, suitable for baskets, vases and rock work. Price 25 cents each.

Solanum Jasminoides Variegatum.

An elegant climbing plant, attaining a height of four or five feet, with finely marked white and green foliage. The flowers are white with golden yellow anthers. It is a valuable plant for festooning around vases or bouquets of flowers.

Price 35 cents each.

Shrubby Calceolarias.

Pretty summer blooming plants, growing about twelve inches high, with various colored bag-shaped flowers. We have this season a fine lot of seedlings, comprising the different varieties of yellow, chestnut, brown and crimson, splashed and spotted. Price 30 cents each; \$3 per dozen.

Pelargoniums.

A very fine assortment. We do not describe them, as the variety of Pelargonium is now so varied and extensive. Price 40 cents each; \$4 per dozen.

Variegated Geranium—MRS. POLLOCK.

A magnificent variety; the green leaf discs, overlaid by a beautiful bronze red zone, belted with bright red crimson, and outwardly margined with golden yellow.

Price 25 cents each.

Alcusa—GRANDIFLORA.

A pretty plant of compact habit, growing from twelve to eighteen inches high, with shell shaped flowers; bright crimson, with nearly black center, and a free bloomer. Price 25 cents each.

Filea—MUSCOSA.

A pretty little plant, resembling the tree moss in appearance; grows about eight inches high, with very small green leaves, and minute pink blossoms, which are produced all over the plant; its graceful drooping habit makes it a desirable plant for vases and hanging baskets. Price 25 cents each.

**Begonia Hybrid Multiflora.**

A very fine free flowering Begonia, blooming continually during the winter months. It is of remarkable neat and compact growth, with small, ovate, glossy leaves, producing graceful drooping racemes of rosy pink blossoms. Price 25 cents each.

German or Parlor Ivy—MIKANIA SCANDENS.

A strong growing climber, with green foliage; suitable for large baskets and vases. Price 25 cents each.

Abutilon—STRIATUM.

A pretty plant with bell-shaped flowers, yellow veined with orange. A free bloomer, growing three to five feet high. Price 25 cents.

Gnaphalium Argenteum.

This silver-foliage plant has no equal for edging of beds, walks, or flower borders, and is also a great acquisition to our list of plants for vases and baskets, as by its free growth, it may, with little pinching of the tips, be grown into any desirable shape. Price 25 cents each; \$2 per dozen.

Select English Pansies.

From the finest named sorts; large size, fine formed, and finely marked flowers. Price 20 cents each; \$2 per dozen.

Eupatorium Reparium.

A new and valuable winter blooming plant, blooming from December to March; flowers pure white, borne in corymbs three inches in diameter, of a shape most valuable for bouquets and baskets of flowers. Price 35 cents each.

Begonia Glaucophylla Scandens.

A new and beautiful half climbing variety, having large panicles of orange, salmon-colored flowers, produced during the winter months. Price 50 cents each.

Koniga Maritima-Variegata—VARIEGATED SWEET ALYSSUM.

A pretty little plant with green and white striped leaves, and small trusses of white, fragrant flowers; it is of creeping habit, equally well suited for edging beds and planting in baskets and vases. Price 20 cents each; \$2 per dozen.

Winter Blooming Fuchsia—SPECIOSA.

A well known variety, producing large flowers, two inches in length, tube and sepals blush, corolla bright crimson; of very free blooming habit; a single plant of this variety, grown in an eight or nine inch pot, may produce 300 to 500 flowers from December to May. Price 25 cents each.

Fuchsia—NONPAREIL.

A singular Fuchsia, with a double corolla; out of which grows another single corolla, tube and sepals clear scarlet, well reflexed; corolla deep blue, striped carmine. Price 50 cents each.

Fuchsia—CARL HALT.

A very fine Fuchsia, having white sepals, and rose colored corolla ; distinctly striped with white ; it is said to be an excellent winter bloomer. Price 25 cents each.

Hydrangea Hortensis.

A handsome shrubby plant, of dwarf habit, with large clusters of flowers, which resembles the flowers of the snow-ball ; only being much larger, and of a lively pink color, with lilac tinge ; does best in a shady place ; will live out doors over winter, with a slight protection. Price, small plants, 25 cents each ; large plants, 50 cents each.

Hydrangea Hortensis Variegata.

An exceedingly ornamental plant, with beautiful pure white and green variegated foliage ; fine for shady positions. Price 40 cents each.

Hydrangea Otaska.

A new variety from Japan, with large, beautiful, glossy leaves, and immense heads of flowers ; white, shaded with pink. Small plants, price 40 cents each.

Hydrangea Rosea Alba.

Similar in habit to the H. Hortensis, flowers white, slightly shaded with rose in opening, then changing to deep red.

Price, small plants, 25 cents each ; large plants, 50 cents each.

Hydrangea Quercifolia—OAK LEAVED.

A hardy, showy plant, having large leaves, and large clusters of whitish flowers. Price 50 cents each.

French Hybrid Gladiolus.

The great variety attained in this most beautiful class during the last few years, is, perhaps, more surprising than of any other plant in cultivation. To those unacquainted with the Gladiolus, we would say that it is of the easiest cultivation—never failing to bloom abundantly. The flowers, in spikes of from nine to fifteen inches in length, combine the leading colors—scarlet, rose, white, orange, crimson, yellow, etc., with every conceivable shade and style of marking. Our stock this spring is large, and assortment very good.

Fine named sorts 25 to 50 cents each ; \$2 to \$3 per dozen.

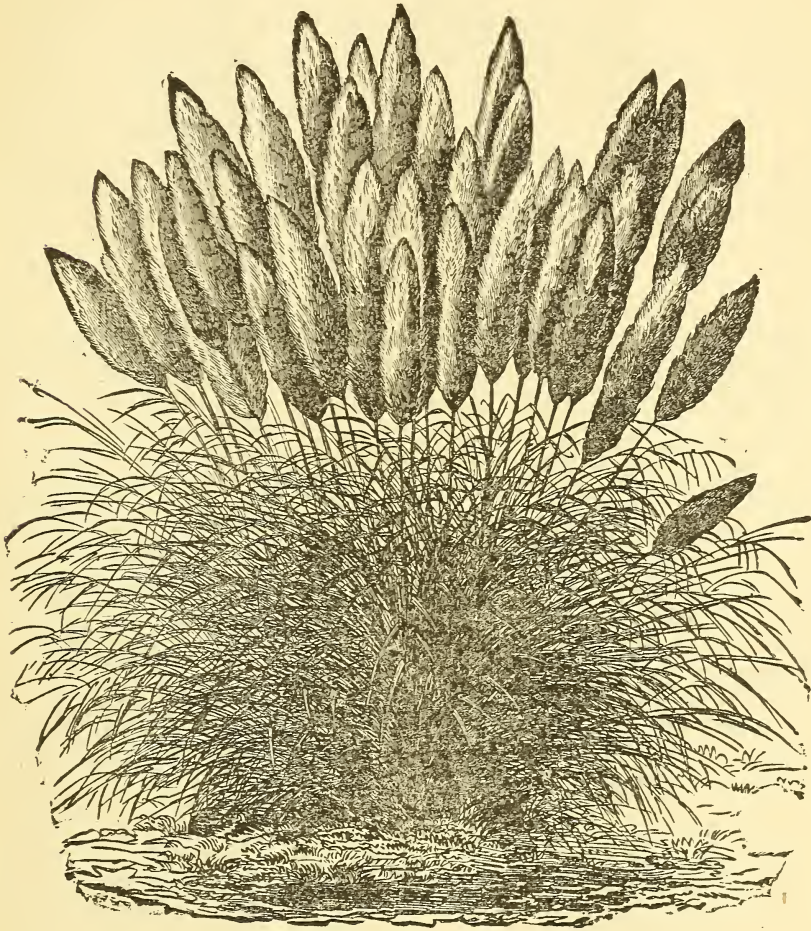
Double White Chinese Primrose.

One of the most useful plants for winter and early spring blooming ; flowers pure white, perfectly double, in bloom from November till May, during which time a strong plant will often times produce as many as 500 flowers.

Price 50 to 75 cents each.

Evergreen Candytuft—*IBERIS TENOREANA* AND *CORAEFOLIA*.

Two varieties of this pretty little hardy plant, resembling the well known annual Candytuft in flower, but being evergreen; stands out in winter without protection; bushy and compact, growing about nine inches high, and covered with flowers in June. Price 25 cents each.



Pampas Grass—*GYNERIUM ARGENTUM*.

We cannot recommend this plant too highly. Although but a grass of gigantic growth, it makes one of the most desirable plants for garden decorations. On well-established plants, its long narrow leaves, which are produced in abundance, curl elegantly at the height of three to five feet, and the flower spikes, resembling plumes of white feathers, grow upon slender stems clear above the foliage. The plant improves much in size, with age. Being a native of South America, it is not hardy where the thermometer falls below zero, and should be protected with straw or leaves against cold or wet in winter. Price 50 cents each.

Achillea.

Achillea Millefolia Rubra—Bright carmine.

“ *Ptarmica Plena*—Pure white.

“ *Tomentosa*—Golden yellow.

Very desirable hardy herbaceous plants, flowering throughout the summer months. Price 25 cents each.

Sedum—CARNEUM VARIEGATUM.

Another variegated plant of great beauty, for baskets, vases and border.

Price 25 cents each.

Acorus Gramineus Variegata.

A pretty grass-like plant with long, narrow leaves, banded their entire length with bright yellow. Very useful for ferneries, baskets, etc. Price 25 cents each.

Myosotis Palustris—TRUE FORGET-ME NOT.

A hardy herbaceous plant, with light blue flowers in clusters; very pretty; does best in a shady place, with good supply of water. Price 25 cents each; \$2 per dozen.

Coleus.

All will admit the serviceable character of the Coleus for bedding and decorations, where colored-leaved plants are desired; their element is rich soil and plenty of water; suitable for every purpose; they can be cut into any shape or grown to any size. Price 25 cents each; \$2 per dozen.

Beauty of Widmore—Green, with white margin, deeply toothed, nerves crimson, very distinct; purple spot on each.

Blumei—Light green, with dark purple spots.

Her Majesty—Bronze crimson, narrow golden edge.

Laciniata—Deeply fringed leaves, light green with dark spots.

Marmorata—Finely marbled with yellowish green and crimson.

Marvel—Leaves fringed and toothed, green with dark margin, and the entire leaf reticulated with purple.

Murrayi—Rich chocolate color, with narrow bright green edge.

Princess Beatrice—Light green, beautifully veined with purple.

Princess Royal—Light crimson, green edge.

Prince of Wales—Light purple, dark blotches, green edge.

Princess of Wales—Bright bronzy crimson, green edge.

Queen Victoria—Light bronzy crimson, bright golden edge, crimson nerves.

Scotti—Foliage green, with deep purple nerves and shading of violet.

Verschaffeltii—Deep crimson green and bronze foliage.

Convalaria Majalis—LILY OF THE VALLEY.

A hardy plant, growing ten to twelve inches high, producing, in May, spikes of small bell shaped flowers of the most delightful fragrance. It is of the easiest culture, and as it prefers shade, grows best when planted under large shrubs or on the north side of buildings. Price 25 cents each.



Hedera—EVERGREEN IVY.

Fine for growing in suspended baskets. The plain green variety being quite hardy, will grow well out of doors, and is valuable for covering walls having a northern or western exposure, as it will cling to a wall readily. Price 25 to 50 cents each.

Canariensis—Large plain green leaf.

Cavendishii—Leaves edged with white.

Maculata Angustifolia—Neatly spotted white and green; very distinct and pretty.

Maculata Aurea—Variegated with golden yellow.

Marginata Argentea—Silver margin: free habit.

Marmorata—Very robust growth; young leaves beautifully marbled, green and white.

Rhombea Variegata—Small leaves, having fine silver margin; distinct.

Canna, or Indian Shot Plant.

The Cannas are stately and highly ornamental plants, growing from four to seven feet high, with large, broad foliage, terminated with racemes, of showy yellow, crimson or scarlet flowers. Should be taken up in the fall and wintered in the cellar.

Excelsa—Orange and red.

Gigantea—Red and yellow.

Indica—Fine yellow.

Nigricans—Dark veined foliage.

Warzewiczii—Deep blood red.

Blooming plants, price 25 cents each.



Salvia Tricolor.

A great acquisition to our hardy ornamental plants, similar in habit to the common Sage, but of dwarfer growth with the young leaves broadly margined with bright pink, reddish, changing to yellow and white; well adapted for edging, very ornamental, highly esteemed in Europe. Price 25 cents each.

Veronica.

A summer flowering plant, with dense spikes of flowers; colors white, blue, violet and rose. Price 25 cents each.

Andersonii—Violet and white.

Andersonii Variegata—Variegated.

Blue Gem—Bright mauve.

Glorie de Lorraine—Blue, lilac and white.

Mad. Maria Boucharlet—Purplish, crimson and white.



Monthly or Tree Carnations.

One of the most valued of plants, either for decoration of the flower garden in summer, or for the green-house or parlor, in winter. The flowers are of nearly every shade and marking, most of them delightfully fragrant. For the formation of winter bouquets, it is, perhaps, the most valuable of all flowers, as it continues in bloom from October until April. Price 25 cents each ; \$2.50 per dozen.

Defiance—Large, deep crimson.

Donadi's Pride—White tipped with rose.

Gen. Von Moltke—Deep purple.

La Purite—Bright carmine, extra fine,

Little Beauty—Yellow, striped crimson and white.

Louise Zeller—Pure white, perfect form.

Meteor—Dazzling red, perfect form.

Monitor—Bright scarlet.

President Degraw—Pure white, abundant bloomer.

Radetzky—Rose, violet purple stripes.

Triumph—White with broad carmine stripes.

Vaillant—Bright scarlet, great bloomer.

Carnation Pinks.

These are indispensable for the flower garden, producing large double fragrant flowers of all shades, from pure white to deep crimson and purple, striped, edged and mottled. Although the plants are quite hardy a slight covering of leaves to keep off the sun in winter, is of great benefit. Price 25 cents each; \$2 per dozen.

Florists' Pinks.

These are more dwarf than the carnation, growing only about one foot high, the colors being the various shades of maroon, carmine and rose, beautifully laced with white; flowers perfectly double; clove-scented; *plant entirely hardy*. The following varieties embrace all shades and styles. Price 25 cents each; \$2 per dozen.

A. Harrington.

Brunette.

Earl of Carlisle.

Ella.

Emille.

Esther.

Etna.

Juliette.

Laura Willmore.

Mount Blanc.

Optima.

Prince Arthur.

T. Long.

Tennyson.

Pink—ALBA FIMBRIATA.

A white sort, of good form and substance and very fragrant; like the rest of its class, it is deemed almost indispensable for summer bouquets; flowers double, fringed, about an inch in diameter; perfectly hardy. Price 25 cents each.

Hybrid Perpetual Rose—GEN. WASHINGTON.

From our large collection of hardy roses, we cannot select one that we can recommend with more confidence than this very desirable rose. It is perfectly hardy, of low bushy growth, and an abundant bloomer. The flower is very double, of round, globular shape, and large size, of a very pleasant brilliant crimson color.

Price 50 cents each.

Hardy White Rose—MADAME PLANTIER.

We wish to call special attention to this beautiful White Rose. It is one of the most hardy Roses we have; the plant grows in a very fine bushy form, and its pure double white flowers are produced in the greatest abundance in June; a most desirable Rose for cemetery or garden. Strong plants. Price 50 cents each; \$4 per dozen.

Yellow Rose—MARECHAL NIEL (*Noisette*).

The most beautiful of any yellow flowered; bright golden yellow, full double flower, free blooming, fine form, petals large and of great substance; a *Noisette* of healthy and vigorous growth. It will be a good Rose, fine for bedding, and useful climber. In Northern latitudes it will require protection during winter.

Price 50 cents each.

Alternanthera—IN VARIETY.

These are very pretty foliage plants, of low, compact growth, only attaining a height of 6 to 9 inches; the colors are bright and they stand the sun well; very attractive and desirable for front lines or margin of circles, in bedding groups, or for vases.

Price 20 cents each; \$1.50 per dozen.

Amoena—Leaves green, yellow and rose.

Amabilis Tricolor—Yellow, red and green.

Latifolia—Orange, red purple and yellow.

Magnifica—Pink, purple and yellow.

Spathulata—Tinted carmine and green.

Versicolor—Tinted, light rose to deep carmine.

**Violets.**

Neapolitan—Double blue, very fragrant.

The Czar—Rich bluish purple, large and fragrant; single.

Price 25 cents each; \$2.50 per dozen.

Tea Rose—BOX SILENE.

An old sort, but now attracting much attention; it is a true Tea Rose, having the delicious odor of that class; the color is peculiarly bright, but of a shade difficult to describe; a blending of purple and carmine, with the slightest shade of orange; it is a valuable variety for forcing for winter flowers. Price 50 cents each.

Tea Rose—DEVONIENSIS.

A superb variety of Tea Rose; of the most delicious fragrance. Color, delicate creamy white, with center softly shaded with yellow; it produces splendid buds.

Price 50 cents each.

Lilium Auratum—GOLDEN STRIPED LILY.

The Golden rayed Japan Lily, the queen of this wondrous race, is now known in every garden where plants of value and beauty are regarded with admiration. Being now so well known, description of this very beautiful Lily is almost needless, but it may be well to remark, that it has proved to be as hardy as any of the common Lilies. Price, for fine blooming bulbs, 50 cents each.

Lilium Lancifolium—JAPAN LILIES.

These superb Lilies are perfectly hardy, flowering early in July and August, forming one of the most striking objects in the flower border.

	Each.
<i>L. Lancifolium Album</i> —White.....	\$0 50
<i>L. " Roseum</i> —Spotted rose.....	50
<i>L. " Rubrum</i> —Spotted crimson.....	50
<i>L. " Monstrosum Album</i> —Pure white, immense clusters of flowers...	1 00
<i>L. " Monstrosum Rubrum</i> —Red spotted, immense clusters of flowers..	1 00
<i>L. " Monstrosum Roseum</i> —Rose spotted, immense clusters of flowers..	1 00

Lilies of Various Sorts.

Aurantiacum—Orange yellow, a very hardy species, will grow anywhere, and contrasts finely with the *L. Candidum*, flowering at the same time. Price 40 cents each.

Candidum—Is the well known white, hardy, garden lily, from three to four feet in height, with large racemes of snow-white fragrant blossoms. Price 25 cents each.

Excelsum (Isabellinum)—This splendid species was introduced a few years since by Dr. Siebold, from Japan, and is one of the most beautiful of the class. Its stately form, beauty of color, and delightful odor, has made it, wherever known, a great favorite. The plants grow five to six feet high, and are crowned with from six to twelve large nodding lilies, of delicate light buff color. The bulbs are large, generally giving two or three stems and are perfectly hardy. Price 75 cents each.

Longiflorum—Large and beautiful, snow white, trumpet shaped flowers; fragrant, hardy species, from twelve to eighteen inches in height. Price 40 cents each.

Superbum—One of our own native species, rarely met in our gardens, but very popular in Europe. Beautiful and rich as many of our native lilies are, this far exceeds them all, bearing as it does a pyramid of yellowish rose flowers from twenty to fifty in number, in full bloom in the early part of July. In good soil it will frequently reach the height of eight feet. Price 50 cents each.

Tigrinum (Tiger Lily)—Orange salmon, spotted black. Price 25 cents each.

Umbellatum—Orange spotted. Price 35 cents each.

Venustum—Salmon with black spots; dwarf habit and very desirable. Price 50 cents each.

Plumbago Capensis—LEADWORT.

An old but very scarce greenhouse shrub, also well suited for planting out. It produces large trusses of azure blue flowers during summer and fall. Ready 1st of March. Price 25 cents each.

Vinca Rosea and Alba.

Plants growing about 18 inches high, and blooming constantly, bearing a profusion of star-shaped flowers. Price 25 cents each.

Alba—Pure white, delicate pink center. | *Rosea*—Deep rose color, dark center.

Lantanas.

The Lantana is a favorite, esteemed for pot culture or the flower border. The plant forms a neat dwarf bush twelve to eighteen inches high, profusely studded all summer and fall with a succession of pretty corymbs of flowers of all shades, from snow-white with lemon center, to pink and rose, orange, scarlet, and rosy lilac, with creamy centers. Price 25 cents each; \$2 per dozen.

Alba Grandiflora—Large white, lemon center; fine.

Delicatissima—Rosy purple, white eye, trailing habit.

Doniana—Yellow, changing to crimson.

Empress of France—Yellow, orange to deep crimson.

Grand Sultan—Rich scarlet, fawn center.

Jean Barth—Yellow, orange and pinkish purple.

Lutea Mutabilis—Yellow, changing to orange and purple.

Madame Hoste—Yellow, changing to pink.
Marcella—Lilac rose, changing to golden yellow.

Mons. Boucharlet—Golden yellow, changing to violet, bright.

Mutabilis Major—Yellow, changing to very deep orange red.

Unique—Light yellow.

Variegata Grandiflora—Yellow, changing to lilac.

Roi des Rouge—Yellow, changing to very deep orange red.

Petunias.

Of this lately so much improved and justly esteemed bedding plant, we now have varieties of nearly all shades, from pure white to bright crimson and deep purple, in almost all imaginable variations, stripes, blotches and margins. We take much pleasure in offering the following collection, which comprises several entirely new shades, and can say without hesitation, that as a collection, it is the finest lot of Petunias that we ever saw together. Those marked * are single varieties.

Price 25 cents each; \$2 per dozen.

**Brilliant*—Bright carmine, dark throat.

Captain Hall—Lilac, white edge and stripes; very large and double.

Concordia—Rosy crimson, white blotches, large and double.

Crimson Perfection—Light crimson, large; fine shape, double.

Emperor William—Bright purplish crimson, white stripes, distinct, double.

Fleurette—Nearly white, shaded with delicate lilac; very good flower, double.

**Fanny*—Pale lilac, crimson edge, purple throat.

Gen. Werder—Clear rosy pink; a rare color, double.

Great Western—Purplish violet, frequently with light edge, very large, double.

Gen. Grant—Fine purplish red, striped and mottled white.

Gen. Hancock—Blush, with deep lilac veins.

Gen. Sheridan—White, marbled crimson.

Geo. Peabody—Dark rose, with white stripes, large.

Grand Sachem—Dull purple, blotched white.

King Lear—Bright carmine, dark center, medium size, double.

Little Novelty—Crimson lilac, purple veins, compact; medium size, double.

Lieut. General—Crimson, striped violet and white.

Maculata—White, mottled and striped lilac and purple.

Multiiflora—Purple and white.

Murello—Crimson purple.

**Nymph*—Bright crimson, white edge and stripes, distinct and fine.

Prince Alexis—Pure white, bright lilac stripes and blotches; good shape, a novel flower, double.

Picturata—Lilac, mottled with white and purple.

Rose Queen—Rosy pink, fine color, double.

Schiller—Very light, delicate rose color, semi-double.

**Sport*—Crimson lilac, frequently spotted with white.

**Star*—Brilliant carmine, white throat.

White Queen—Pure white.

**Zouave*—Crimson, spotted and striped with white.

Dahlias.

Our collection of these autumnal flowers is very extensive, and contains the finest varieties in cultivation, embracing every shade and color, and the most perfect symmetry of form. Plants in pots, suitable and ready for the border by the first of April.

Price 25 cents each; \$2 per dozen, our selection.

LARGE FLOWERING.

- Agnes*—Pure white.
Anna—Lilac rose.
Baronne De Wangennes—White border.
Belle de Baum—Rosy lilac; fine.
Beauty of the Grove—Buff, edged with crimson.
Bessie Wyatt—White, red striped.
Bob Ridley—Bright red; splendid.
British Triumphant—Dark purple.
Carnation—Blush, striped lilac and purple.
Celestial—Deep violet.
Charivari—Yellow, striped and mottled scarlet; fine.
Charles Turner—Bright yellow, edged with crimson.
Deutsche Ausdauer—Rich carmine.
Dr. Bozes—Bright scarlet.
Duchess de Malakoff—Delicate rose, striped with light violet.
Duchess of Wellington—Pure white, bordered with rose.
Empress Eugene—Purple, white tip; fine.
Flora—Orange and red.
Gloire des Amandiers—Light rose, striped and pointed carmine.
Grand Papa—Cherry shaded orange and dark brown.
Joseph Biemont—Light buff, shaded with rose.
John Bunn—Yellow, striped with crimson.
Lady Lillian Paulett—Light flower, tipped with lilac.
Lady Pacton—Red, tipped with white.
- Lady Mary Wilde*—White, tipped with rosy purple; fine.
La Phare—Clear scarlet; free bloomer.
Le Domine Noir—Maroon, tipped with white.
Madame Perseand—Orange scarlet; showy.
Madge Wildfire—Bright scarlet; showy.
Mary Green—French white.
Mrs. Savory—White, laced with purple lilac.
Mrs. Lydia Burgess—Deep lilac.
Mrs. Sparry—Fawn, tinted with lilac and purple.
Mrs. Turner—Fawn with yellow at base.
Noble Lady—White and purple.
Optata—Pure white; very fine.
Oscar—Dark velvety maroon.
Othello—Dark crimson.
Patent—Salmon, dashed with purple, and tipped with yellow.
Pluto—Purple and white.
President Lincoln—Buff, striped red and orange.
Princess Mathilde—White center, shaded with violet and pink.
Queen Mab—White, scarlet tip.
Rosebud—Blush, pink tip.
Stafford Gem—Salmon, tinted yellow.
Victory de Magenta—Yellow, tipped with rosy salmon; fine.
Wm. Dodds—Clear golden yellow.
Yellow Beauty—Bright yellow.

Dwarf and Pompon, or Bouquet Dahlias.

Price 30 cents each; \$3 per dozen.

- Annie*—Blush, tipped with crimson.
Child of Faith—Creamy white.
Fire Ball—Brilliant crimson.
Honeycomb—Violet purple.
Hugo—Dwarf purple.
Kleiner Eichler—Light rose, bordered with purple crimson.
Kleines Purpurroschen—Dark violet with bright edges.
Kleinod von Kestritz—Brilliant cochineal.
Little Goldlight—Yellow, tipped with scarlet.
- Little Gem*—Rich drab; fine form.
 “ *Hermann*—Cerise pink, tipped with white; splendid.
 “ *Kate*—Deep purple; fine form.
 “ *Moritz*—Deep scarlet.
L. T. Schminke—Buff, tipped with crimson.
Mira—Purple crimson.
Minstrel—White bordered with lilac and crimson.
Sambo—Rich maroon.
Zarte Nelke—White, striped with crimson.

Salvias.

These are among the most gorgeous of our summer flowers, blooming profusely throughout the entire season. Price 25 cents each; \$2 per dozen.

- Porphyrianum*—Small pink; neat and pretty.
Patens—Fine rich blue; contrasts beautifully with either of the others. Price 30 cents each.
- Rosea*—Beautiful rose color.
Splendens—Brilliant scarlet; a free bloomer.
Splendens Gordonii—Brilliant scarlet dwarf habit.

Verbenas.

The Verbena delights in new soil. Change the beds annually, or, when this is not convenient, dig holes a foot or more wide and deep; fill with fresh loam—(sandy loam, enriched with well decomposed manure and old sods, is best). Our stock of Verbenas is very large. Plants we send out will be well established, and will bear transportation to any part of the country.

Price 12½ cents each; \$1.25 per dozen. (\$6 per hundred, our selection.)

- Addie*—Pure white; fine.
Alfred—Light blue.
Bandero—Violet, maroon and white.
Beauty Supreme—Salmon pink, white and yellow eye.
Bismarck—Blood red, white eye.
Bizarre—White, striped pink and scarlet.
Bird of Paradise—Scarlet, white center.
Blackamoor—Crimson maroon.
Blanche—Pure white, fine bedder.
Black Bedder—Very dark maroon.
Blue Bird—Large deep blue.
Blue Defiance—Blue margin, white eye.
Capt. Pottinger—Bright scarlet crimson.
Carolina—Blush, mottled and speckled crimson.
Celestial Blue—Azure, white eye.
Claret Queen—Violet crimson, large.
Colossus—Crimson, violet eye, size immense.
Commodore—Rich blue purple, white eye; very fine.
Darkness—Deep maroon.
Diamond—Brilliant rose, white eye.
Ebony—Dark maroon, purple eye.
Echoline—Light vermilion, yellow eye.
Edwin Brown—Blush white, marbled with violet.
Emperor—Maroon purple.
Eva—Large vermilion, white eye.
Excellent—Indigo blue.
Fire Cloud—Fiery scarlet, yellow eye.
Flirt—White, blotched and speckled crimson.
Formosa—Large pink, white eye.
Fox Hunter—Rich crimson.
Gen. Meade—Rich crimson, yellow eye.
Gen. Sheridan—Vermilion, shading to maroon.
Gettysburg—Crimson, fine form.
Giant of Battles—Deep crimson, dark center; superb.
Grace Greenwood—Violet purple, white eye.
Herald of Spring—Scarlet crimson, white eye.
- Heroine*—Rose scarlet, and crimson.
Illustrata—Indigo blue, large white eye; fragrant.
Il Vesuvius—Cherry pink, lemon eye.
Iona—Large scarlet, yellow eye, showy.
Ivanhoe—Rich blue, white eye.
Kossuth—White, crimson band.
Lacinka—Magenta rose, yellow eye.
Lavender Queen—Lavender blue.
Lillian—Bright cherry, yellow eye.
Lillunia—Rosy pink, white eye.
Lizzie—Bright rosy pink, white eye.
Loyalty—Scarlet crimson, dark eye; fine.
Maid of Kent—Pink, white eye; fine truss.
Mars—Bright rosy crimson.
Mattie—Pure white, rose margin.
Miniola—Rich crimson, yellow spot.
Miss Baring—Deep rose, white eye.
Miss Martin—Light blue, white eye.
Mrs. Bliss—Rich cherry, yellow eye.
Mrs. White—White, with yellow eye.
Mrs. Wilson—Purplish crimson, white center; fine.
Mrs. Woodruff—Bright scarlet; extra fine.
Muriel—Ruby pink, white eye.
Pluto—Purple, white eye.
Purple Standard—Dark purple, large white eye.
Reliance—Bright ruby, carmine tinted; very fine.
Salamanda—Lake crimson, shaded violet.
Snow Wreath—Pure white.
Sparkler—Light scarlet, yellow eye.
Splendor—Vermilion, crimson and white.
Spot—Crimson, white eye.
Star—Maroon, white eye.
Star of the West—Clear rosy pink; very large and fine.
The Gem—Deep rose pink; fine full truss.
Ultramarine—Very fine deep blue.
Uvalia—Salmon, crimson eye.
Venus—Pink, white eye.
Velvet Mantle—Crimson scarlet, velvet shade.
Waregan—Fiery scarlet, dark eye.

Double Geraniums.

Considerable attention has been paid to this class of plants, and the list is already large, but after careful observation, and examination of various large collections, we have found none more beautiful or desirable than those we now offer. We hope for much improvement in the future, but for the present confine ourselves to those we are sure will please our patrons.

NEW VARIETIES—Price 50 cents each.

- | | |
|---|---|
| <p><i>Ascendency</i>—Rosy pink, large truss and flowers.</p> <p><i>Boucharlat aine</i>—Bright cherry, large trusses of flower.</p> <p><i>Bouquet tout Fait</i>—Light orange vermilion.</p> <p><i>Camelliaflora</i>—Rich rose color large truss.</p> <p><i>Dr. Andre Sicard</i>—Pure vermilion, dwarf.</p> <p><i>Ianthe</i>—Bright pink, dwarf compact habit.</p> <p><i>Le Comte Talou</i>—Dark rose, salmon tinge.</p> <p><i>Mad. Boutard</i>—Bright rose, dwarf habit.</p> <p>“ <i>Boucharlat</i> — Bright rose, peach flower.</p> | <p><i>Mad. Ch. Martine</i>—Light China rose, strait foliage zoned.</p> <p><i>Mad. Gebhardt</i>—Rose carmine, large trusses.</p> <p><i>Mad. H. Jacotot</i>—China rose, dark black zoned foliage.</p> <p><i>Marie Rendaller</i>—Tender rose, glaze with white.</p> <p><i>Princess Teck</i>—Brilliant scarlet, large size.</p> <p><i>Rosette</i>—Rosy crimson, clear and distinct.</p> <p><i>Victoire de Lyon</i>—Bright groseille shaded violet, new shade.</p> <p><i>Volcan</i>—Red vermilion orange, large trusses.</p> |
|---|---|

GENERAL COLLECTION—Price 30 cents each, except where noted.

- | | |
|---|---|
| <p><i>Andrew Henderson</i>—Rich, deep scarlet, truss large; very double.</p> <p><i>Empress Eugenie</i>—Vivid rose color, very double; dwarf habit; large truss; beautiful and distinct. Price 50 cents each.</p> <p><i>Gloire de Nancy</i>—Large crimson flowers, throwing them well above the foliage; a very vigorous grower.</p> <p><i>Madame Lemoine</i>—Beautiful rose color; a great bloomer; splendid truss; flowers large and very double; stands the sun well.</p> <p><i>Maria Crouse</i>—Very dwarf, foliage lively green, umbels large, flowers very large and double, blush pink. Price 75 cents.</p> | <p><i>Surpasse Gloire de Nancy</i>—Bright carmine, very large.</p> <p><i>Triumph</i>—Flowers very full and double, bright scarlet.</p> <p><i>Triumph de Lorraine</i>—Very double, cherry carmine.</p> <p><i>Triumph de Thumesnil</i>—A variety with large trusses of flowers of a vivid violet rose, shaded with carmine.</p> <p><i>Victor</i>—Bright orange scarlet; one of the most showy and conspicuous double flowering varieties.</p> <p><i>Wilhelm Pfitzer</i>—Dwarf, free blooming habit, having dazzling orange scarlet colored flowers, large and very double; a superb variety. Price 50 cents each.</p> |
|---|---|

Nosegay Geraniums.

A class of extremely ornamental habit, and large trusses of flowers.

Price 25 cents each, except where noted.

- | | |
|---|---|
| <p><i>Beaton's Perfection</i>—Bright pink; fine.</p> <p><i>Brilliant</i>—Rich scarlet, upper petals shaded with lake.</p> <p><i>Cardinal</i>—Rose, shaded with carmine and pink.</p> <p><i>Estandard des Nosegays</i>—Immense trusses of dark crimson flowers.</p> <p><i>General Lee</i>—Violet crimson; flowers large; truss finely rounded and large. 40 cents.</p> | <p><i>Le Grande</i>—Brilliant carmine scarlet; superb.</p> <p><i>Miss Nilsson</i>—Immense trusses of fine rose pink flowers; a prolific bloomer and fine bedder.</p> <p><i>Model Nosegay</i>—Rich crimson and lake.</p> <p><i>Solferino</i>—Solferino color, extra large truss; very fine.</p> <p><i>Vulcan</i>—Large trusses of very deep crimson flowers.</p> |
|---|---|

Zonale Geraniums.

The Zonale Geranium, in all its varieties of white, blush, rose, salmon, scarlet and crimson, are constant and profuse bloomers, worthy of the esteem in which they are held for the parlor, conservatory, and as bedding plants for the garden.

The great improvements made in them has placed them at the head of bedding plants.

Price 25 cents each, except where noted; \$2 per dozen.

- Acme*—Rich salmon, flamed with scarlet.
Aurantia Striata—Salmon, faintly striped white.
Beaute de Suresne—Bright rose, white center.
Bicolor—Salmon, light edge.
Capt. Darling—Dark shaded leaf, with large truss of salmon rose flowers.
Cerise Unique—Salmon scarlet; light green transparent foliage.
Clipper—Bright pink; fine.
Christina—Rich rose pink; fine.
Cybister—Brilliant crimson scarlet.
Conqueror—Orange scarlet, very large truss, rich foliage.
Dictator—Carmine crimson, large flower; fine. 35 cents.
Dr. Koch—Rich purplish crimson; white eye, large flower. 50 cents.
Dr. McDonnell—Flowers large, rich crimson red, shaded with vermilion.
Dr. Muiret—Large trusses of orange scarlet flowers. 40 cents.
Dr. Newham—Light crimson; fine foliage.
Eclat—Rich magenta, suffused with purple; large and fine.
Emil Lemoine—Deep blood red and crimson; large truss; showy and fine.
Eugenie—Crimson scarlet; free bloomer.
Excellent—Rich fiery scarlet; large truss.
Fairy Ring—Bright zone; novel rosy salmon; white eye. 30 cents.
Father Hyacinth—Splendid bright pink, white center. 30 cents.
Fire Fly—Scarlet shaded, with salmon, giving it a very peculiar color; large truss, on strong erect stock. 50 cents.
Geo. Pearson—Dark crimson, fine flower.
Glorious—Brilliant scarlet; large truss; great bloomer.
Gen. Grant—Bright scarlet, large truss, very fine.
Hector—Light dazzling scarlet.
Helen Lindsay—Deep crimson; splendid.
Incomparable—Clear salmon, streaked with white; dwarf habit. 30 cents.
Jean Sisley—Richest shade of deep scarlet, flowers and truss very large, of good branching habit.
Julius Cesar—Brilliant orange scarlet; large flower.
- Leonidas*—Fiery scarlet; the largest flower among the high colored varieties; good grower and free bloomer; extra. 35 cents.
Lizzie—A novel and desirable variety, salmon flowers, shaded with orange in the center; quite new in color.
Madame Dureau—Bright pink, the two upper petals spotted white: very distinct. 50 cents.
Mad. Jules Aldebert—Trusses large, flowers, delicate rose color.
Madame Mezard—Perfect form; lower petals red amaranth, upper ones bright red, shaded with violet; white eye. 50 cts.
Madame Vauchier—White, scarlet eye.
Madame Werle—White, delicate pink eye, very pretty.
Maid of Kent—Dwarf habit; brilliant trusses of pure rose pink; fine.
Mark Twain—Salmon, shaded rose and violet, large flower and truss; fine. 50 cts.
Masterpiece—Salmon, with crimson around center.
Mrs. Gladstone—Rich crimson, exquisite form; large truss. 50 cents.
Perfection—Brilliant scarlet with carmine shade; large truss.
Queen of the West—Bright orange scarlet; large truss and profuse bloomer.
Reticulata—Green foliage; elegantly netted or traversed with golden yellow in winter and spring. 50 cents.
Spitfire—Bright scarlet; richly marked foliage; dwarf habit.
Surpasse Beaute de Suresne—Very large truss; bright pink; a very beautiful variety. 50 cents.
Tom Thumb—Brilliant scarlet; very dwarf habit.
Triumph de Mount Rouge—Pale salmon pink; fine.
Waltham Seedling—Dark crimson; large truss.
Wellington Hero—Orange scarlet, extra large white eye, large flowers and good truss.
White Perfection—Pure white; profuse bloomer.
Wiltshire Lass—Fine pink.

Variegated-Leafed Geraniums.

These are prized alike for their fine foliage and brilliant flowers. The foliage alone adds variety and brilliancy to the garden.

Price 30 cents each ; \$3 per doz.

<i>Bijou</i> —Beautiful and distinct white edge foliage; scarlet flowers.	<i>Lady Cottenham</i> —Fine foliage, with deep golden edge.
<i>Fairy Nymph</i> —Silver foliage, bright scarlet flowers.	<i>Mountain of Snow</i> —Pure white margin; extra fine.
<i>Flower of the Day</i> —Silvery-edged foliage, bright scarlet flowers.	<i>Silver Queen</i> —Very beautifully variegated, with pink flowers.
<i>Golden Attraction</i> —Red zone, silver margin.	<i>Virgin Queen</i> Green foliage, margined with pure white; scarlet flowers.

Fragrant Geraniums.

Handsome bedding plants, and for their exquisite fragrance a charming addition to a bouquet of summer flowers.

Price 25 cents each.

<i>Apple Scented (odoratissima)</i> —Fine apple perfumed; dwarf habit.	<i>Pennyroyal</i> —Finely cut foliage, strongly scented.
<i>Nutmeg (odoratissima erectum)</i> —Delicate pale green foliage, highly scented.	<i>Peppermint Scented</i> —Large velvety green foliage, very pleasant fragrance.
<i>Lemon Scented (Grispa Major)</i> —A most delicate lemon scented geranium, with small leaves; delicate habit.	<i>Rose Scented (capitatum)</i> —Cut-leaved, very agreeable and justly esteemed.
<i>Oak Leafed</i> —Pleasantly fragrant, dark foliage.	<i>Shrubland Pet</i> —Neat foliage, pleasant scent; dwarf habit.

Fuchsias.

The Fuchsia, or Ladies' Ear Drop, is among the finest and most popular plants grown; graceful in habit, beautiful in flower, and of easy culture. Some of the varieties are very large, and present a striking contrast in colors.

Price 25 cents each ; \$2 per dozen.

<i>Alba Coccinea</i> —Tube crimson, sepals white, corolla violet, mottled rose.	<i>Catherine Parr</i> —White tube and sepals, rich red corolla.
<i>Alexandrina</i> —Glossy scarlet tube and sepals, corolla white.	<i>Cœur de Lion</i> —Crimson sepals, very dark purple corolla.
<i>Annette Paush</i> —Bright red sepals, dark purple corolla, double.	<i>Constellation</i> —Sepals light carmine, corolla rich lavender; large.
<i>Annie</i> —Tube and sepals white, well reflexed, corolla deep rose; fine habit.	<i>Elm City</i> —Sepals rich crimson, corolla purple, globular; double; extra fine.
<i>Annie Hart</i> —Tube and sepals waxy carmine, dark corolla, globular shaped flower, dwarf habit.	<i>Empress</i> —Corolla white, shaded with violet, well reflexed.
<i>Arabella</i> —White tube and sepals, corolla rose.	<i>Ferwath</i> —Blush sepals, bright crimson corolla.
<i>Beatrice</i> —Corolla deep carmine, tube and sepals pure white.	<i>Garibaldi</i> —Sepals broad rich crimson, corolla lavender blue.
<i>Beauty of Clapham</i> —White tube and sepals, corolla violet; shaded rose.	<i>Geo. Felton</i> —Tube short and thick, sepals reflexed, corolla bright purple.
<i>Belle Bordelaise</i> —Broad red sepals, purplish crimson corolla, large flower.	<i>Gen. Grant</i> —Large single flowers, corolla rosy lake, sepals bright red.
<i>Blanchette</i> —Pure white tube and sepals, corolla scarlet, tinted with rose.	<i>Giant</i> —Large double purple corolla; bright rose sepals.
<i>Carl Halt</i> —White sepals, corolla rose color, distinctly striped with white.	<i>Glorie des Marches</i> —Finely recurved crimson sepals, bright purple corolla; dwarf habit.

Fuchsias—Continued.

- Glorie de Neisse*—White tube and sepals, light rose corolla, frequently striped with white.
- Grand Cross*—Tube and sepals vermilion, corolla violet.
- Gustave Heitz*—Waxy red sepals, corolla double purple, veined with crimson.
- Il Trovatore*—Sepals white, corolla deep rose; extra.
- Lustre*—Tube and sepals pure white; vivid crimson corolla; good habit and free bloomer.
- L'Elisir D'Amour*—Sepals waxy white, corolla deep carmine.
- Madame Koch*—Waxy crimson sepals, finely reflexed, dark corolla.
- Madame Sontag*—Brilliant red tube and sepals, purple corolla.
- Marksman*—Tube and sepals carmine; very double; quite distinct.
- Master Longfield*—Reflexed sepals of pure white, corolla rosy crimson.
- Mazeppa*—Blush and crimson sepals, carmine corolla.
- Multiplex*—Large tube, long pointed sepals, dark blue corolla.
- Norfolk Giant*—Sepals carmine crimson, corolla violet blue; double.
- Pillar of Gold*—Foliage beautifully variegated golden yellow; flowers dark.
- Prince Imperial*—Corolla dark purple, bright scarlet sepals, dwarf habit, free bloomer.
- Princess of Wales*—Tube and sepals bright crimson, well reflexed; corolla double white.
- Purple Prince*—Tube and sepals waxy carmine scarlet, corolla rich violet.
- Queen of Whites*—Double white corolla, sepals coral red; large and fine.
- Rose of Castile*—Sepals and tube blush, corolla large rosy purple; extra fine.
- Schiller*—Sepals white, corolla crimson purple.
- Sou de Chiswick*—Rosy crimson sepals, corolla rich violet; extra.
- Speciosa*—A winter blooming variety of large size; tube and sepals blush, corolla bright crimson; desirable.
- Rose of Denmark*—Corolla light pink, margined with rose, white tube and sepals, very pretty and delicate color.
- Tom Thumb*—Light scarlet; free bloomer; dwarf habit.
- Tower of London*—Sepals broad, scarlet, rich violet corolla.
- Warrior Queen*—Sepals scarlet, well recurved corolla.
- Wave of Life*—Bright scarlet sepals, corolla bluish violet, golden tinted foliage.
- White Perfection*—Tube and sepals white, finely recurved, corolla rosy crimson; distinct and fine.

Chinese Chrysanthemums.

The popularity of this class is increasing every season. They are hardy, of easy cultivation, adapted alike to the flower-garden, green house and parlor, blooming in late autumn, when most other flowers have been cut off by early frost.

LARGE FLOWERING—Price 25 cents each; \$3 per dozen.

- Beethoven*—Bronzed red, with slight golden tips on the surface.
- Blonde Beauty*—White, with delicate stripes.
- Dr. Lindley*—Large dark orange, with amber center.
- Duke of Edinburgh*—Rosy lilac, light center, very large and fine flower.
- Enamel*—Delicate blush, white with incurved petals, large; beautiful.
- Finnette*—Delicate lilac peach, with a lighter center.
- Lady Godiva*—Sulphur white, large and full, finely incurved.
- Lord Derby*—Very dark purple, petals broad and finely incurved.
- Mary Lind*—Pure white.
- Miss Mary Morgan*—Delicate pink, with rich, broad, incurved petals.
- Mr. Geo. Haskin*—Lilac rose or peach, with silvery turnover.
- Mr. Evans*—Dark chesnut, with lighter center.
- Mrs. Geo. Rundle*—Pure white, high center, close and compact.
- Mrs. Sharp*—Rich pinkish rose, large and full, incurved.
- Orange Annie Salter*—Bright orange.
- Pink Perfection*—Soft pink, the lower petals tinted with a darker shade.
- Plenipo*—Rose purple, with silvery shade; very double.
- Princess Charlotte*—Rosy blush anemone, with high center of darker color.
- Princess of Teck*—Pure white, very large and full, finely incurved.
- Princess Thyra*—White anemone, with high sulphur center.

Chinese Chrysanthemums—Continued.

- Prospero*—Dark violet purple, very full, incurved and free.
Purpurea Elegans—Rich violet purple or crimson, with half incurved petals, very double; a scarce and attractive color; distinct and fine.
Princess—Fine large pure white anemone.
Rival Little Harry—Dark yellow or golden amber; very double and finely incurved.
Rotundiflora—Pearl white, changing to pale lilac.
Virgin Queen—Snow white, large flower.
White Eve—Pure white, of exquisite form.

POMPONE, OR SMALL FLOWERING.

- Amy*—Splendid golden yellow, very dwarf and compact.
Bob—Rich crimson; extra fine.
Bouquet Blanc—White.
Christabel—Bronzed rose, fawn center; dwarf, fine.
Coquette—Blush, deep yellow center.
Damiette—White, edged crimson, pretty; early.
General de Laurancay—Yellow and bronze, neat and compact habit, fine.
Gringolet—Pale yellow, carmine tips, very double.
Henriette—White, with delicate rosy tinge.
Iris—White, tipped with bright pink, full; neat habit.
James Forsyth—Fine orange crimson; distinct, early and fine.
Little Creole—Brown orange; very dwarf.
Little Kate—Blush, with primrose center; fine form, compact habit.
Madge Wildfire—Vivid red, with large, golden tips.
Madame de Sabatier—Purplish lilac, white center; early.
Madame la Comtesse de Mons—Rosy lilac, with golden tips; white center; early.
Marie Stuart—Lilac blush, sulphur center.
Medusa—Brown, very double; compact habit; free.
Monsieur Astie—Deep cinnamon, gold center, fine.
Monsieur de Soulages—Rosy purple, fine color; perfect.
Prince Kenna—Rose pink, light center.
Toufrida—Bright golden amber; fine.
White Trevenna—Pure white flowers, well formed; very beautiful.
Zobeide—Light rose, high center; fine.

Japanese Chrysanthemums.

The effect produced by their fantastic forms and brilliant colors, is most novel and pleasing; many of their immense blooms having more the appearance of tassels formed by the gay plumage of tropical birds than of flowers.

Price 25 cents each; \$2 per dozen.

- Chang*—Very large, with broad twisted and curled florets of a dark orange red color, with yellow back.
Chromatella—Bright chrome or orange yellow.
Dr. Masters—Bright yellow, the center changing to red.
Emperor of China—The flowers when they expand are rosy white; when mature they are clear white, having the center tinted with rosy buff.
G. F. Wilson—Dark golden yellow, very large and double.
Gloriosa—Flowers large, composed of long slender florets of bright orange, curiously twisted and curled.
Hero of Magdala—Blood red, the reverse of the petals orange buff.
Japonicum—Crimson; orange fringe.
James Salter—Clear lilac, or mauve, shaded towards the center.
Laciniatum—Pure white, delicately fringed; late and distinct.
Mandarin—Clear canary yellow, petals very broad and curled.
Meteor—Bright golden yellow, changing to orange.
Negro—Splendid dark maroon, with long curled thread like petals.
Purpurea Alba—Rich purple, mottled and spotted white.
Sol—Clear citron yellow, with long wax-like petals.
Star—Very large orange yellow petals, of great breadth and length.
The Mikado—Golden yellow, changing to orange.
The Sultan—Flowers of large size, composed of a mass of bright rosy purple florets, with a lighter back.

Heliotropes.

Nothing can take the place of Heliotropes in a bouquet. Their delicate and delicious perfume stands unrivalled. Any rich light soil will answer for them; suited for pot culture and the border. Price 25 cents each; \$2 per dozen.

- | | |
|---|---|
| <p><i>Belle of Jersey</i>—Dwarf, dark blue, extra.
 <i>Caroline des Antoinnes</i>—Lilac blue.
 <i>Cardinal Richilieu</i>—Lavender blue.
 <i>Chieftain</i>—Light blue.
 <i>Duc de Lavendury</i>—Rich violet purple, fine.
 <i>Gen. Valhubert</i>—Dwarf habit, flowers dark blue; one of the best.
 <i>Incomparable</i>—Light lilac blue.
 <i>Jane Mesmer</i>—Light blush, very fragrant.</p> | <p><i>Le Geant</i>—White with lilac tint.
 <i>Leopold I.</i>—Deep violet blue.
 <i>Mad. Michel</i>—Bluish violet, light center.
 <i>Peruvianum</i>—Pale white; very strong grower.
 <i>Reine des Violettes</i>—Rosy violet, white center, yellow eye, large truss.
 <i>Souvenir de Liege</i>—Pale lilac, with white and yellow-tinged center; very fine.
 <i>The Standard</i>—Dark purple; large truss.</p> |
|---|---|

Phloxes.

These are among the finest of herbaceous perennials—thriving in a great variety of soils, and perfectly hardy; require but little care, and bloom in the greatest profusion from midsummer to November. Our collection is large, and contains the best varieties in cultivation—embracing all shades and colors.

NEW VARIETIES—Price 35 cents each; \$3 per dozen.

- | | |
|---|---|
| <p><i>Alphonse Karr</i>—Light crimson, carmine center.
 <i>Ange Gardien</i>—White, pink shaded, crimson center.
 <i>Arthur Fontaine</i>—Crimson, purple center.
 <i>Bambrico</i>—Blush, small purple eye.
 <i>Chas. Meyer</i>—Deep rose, dark center.
 <i>Croix de St. Louis</i>—Lilac purple.
 <i>Etoile de Neville</i>—White, tinted purple, deep center.</p> | <p><i>Jane Eyre</i>—White, delicate purple eye.
 <i>L'Avenir</i>—Fiery red, large truss.
 <i>Le Drac</i>—Rich crimson, clouded center.
 <i>Liervalii</i>—Pink, deep crimson center.
 <i>Mad. de Cannard d'Harna</i>—Light crimson, deep center.
 <i>Reve d'Or</i>—Brilliant salmon, cerise eye, fine.
 <i>Roi des Roses</i>—Rosy salmon, scarlet eye.
 <i>Virgo Maria</i>—Pure white.</p> |
|---|---|

GENERAL COLLECTION—Price 25 cents each; \$2 per dozen.

- | | |
|--|---|
| <p><i>Admiral Lynois</i>—Bright crimson, dark center.
 <i>Aniabile Zoe</i>—White, lilac center.
 <i>Armond Artois</i>—Deep rose, lilac center.
 <i>Arsine</i>—White, tinged with purple.
 <i>Aurelie Duriez</i>—White, deep violet eye.
 <i>Decora</i>—Rosy lilac.
 <i>Dr. Tosset</i>—Bright rosy crimson.
 <i>Duyquentin</i>—Crimson, clouded white, dark eye.
 <i>La Volupte</i>—Bright crimson, dark center.
 <i>Lillacinea Perfecta</i>—Clouded lilac.
 <i>Mad'lle Durdeau</i>—Light crimson purple.
 <i>Mad'lle Irma Huet</i>—Pure white.
 <i>Mad. Chatellon</i>—White clouded lilac, purple center.
 <i>Mad. Damage</i>—Rosy lilac.
 <i>Mad. Dubuisson</i>—Purplish crimson, shaded.</p> | <p><i>Mad. Flanders</i>—Clouded lilac, light center.
 <i>Mad. Henricq</i>—Light crimson, dark center.
 <i>Mad. Houldt</i>—Bright crimson, dark center.
 <i>Mad. John Henderson</i>—Pure white.
 <i>Mad. A. Terry</i>—Bright crimson, deep center.
 <i>Mad. Sœur</i>—White, violet eye.
 <i>Mad. St. Martin</i>—Rosy crimson, dark center.
 <i>Mad. Tenturien</i>—Lilac, light center.
 <i>Mad. Zouchardt</i>—Deep crimson, clouded.
 <i>Mr. Bienvenue</i>—Bright purplish crimson, dark eye.
 <i>President Morel</i>—Dark purple.
 <i>Rubra Grandiflora</i>—Deep purple.
 <i>Souv de 29th October</i>—White, purple eye.
 <i>Spenceri</i>—Rosy lilac, light eye.
 <i>Wm. Schule</i>—Violet, white center.</p> |
|--|---|

THE ROSE.

"The Queen of Flowers" is indispensable to every flower garden ; and now that so varied and beautiful a display can be had of roses alone, throughout the entire season, it is no wonder that their popularity is so great, and the desire to possess a good assortment so universal.

The Rose, in all varieties, must have a deep, well drained and well enriched soil. Before planting, trench twenty inches deep and incorporate liberally of old, well rotted manure. Prune freely, especially the free-growing kinds, in order to secure a supply of young wood.

The following list embraces most of the really desirable Roses of each class, and sufficient to afford abundant variety to every collection.

Persons unacquainted with the different varieties will do well to leave the selection to us. In such cases we can usually send fine, strong plants, and do better for our customers than when confined to particular sorts.

Moss Roses.

The Moss Rose is a universal favorite. All the varieties are beautiful, and will reward the cultivator.

Price 75 cents each ; \$6 per dozen.

<p><i>Countess of Murinais</i>—Pure white, large and double ; blooms in clusters.</p> <p><i>Elizabeth Rowe</i>—Pale rose.</p> <p><i>Henry Martin</i>—Brilliant crimson.</p> <p><i>Luxembourg</i>—Large, cupped; fine purplish crimson.</p>	<p><i>Madame Rochlambert</i>—Dark red, large and full.</p> <p><i>Princess Adelaide</i>—Blush, becoming quite pale ; double, well formed.</p> <p><i>William Lobb</i>—Bright crimson.</p> <p><i>Zebrina</i>—Deep rose, double.</p>
--	--

Climbing Roses.

These are admirably adapted for covering arbors, trellises, old trees, unsightly buildings, etc. Their rapid growth, perfect hardiness, luxuriant foliage, immense clusters of beautiful flowers, and their late blooming, commend them to every one.

Price 50 cents each.

<p><i>Anna Maria</i>—Blush, tinged with flesh.</p> <p><i>Baltimore Belle</i>—Pale blush and white; very compact and double.</p> <p><i>Beauty, or Queen of the Prairie</i>—Bright rosy red ; large, compact, globular.</p> <p><i>Caradori Allen</i>—Bright pink.</p> <p><i>Greville, or Seven Sisters</i>—Pink, changing to rose and blush.</p>	<p><i>Jane</i>—Rosy blush ; delicate and fine.</p> <p><i>Milledgeville</i>—Pale blush.</p> <p><i>Mount Joy</i>—Blush border, pink center.</p> <p><i>Queen of the Belgians</i>—Pure white.</p> <p><i>King of the Prairie</i>—Bright pink, and fragrant.</p>
--	--

Hybrid Perpetual s.

This class embraces the most beautiful roses—perfectly hardy and vigorous, blooming at intervals from June to November; flowers large, fragrant, and of perfect form; colors beautiful, of all shades, from pure white, to blush rose, carmine and brightest crimson. Price 50 cents each; \$4 per dozen.

- Anna Alexieff*—Clear salmon rose.
Anna de Diesbach—Bright rosy carmine.
Ardoise de Lyon—Deep crimson, shaded with purple.
Auguste Mie—Light glossy pink; large cupped and fine.
Baron Prevost—Deep rose; large, full, an abundant bloomer.
Cardinal Patrizzi—Dark, velvet crimson; very beautiful.
Comte Bobinsky—Brilliant crimson; dwarf habit.
Comte de Derby—Bright rosy blush, large and full.
Comtesse de Chabriliant—Deep crimson rose.
Crystal Palace—Flesh color, shaded pink.
Doctor Arnal—Bright crimson; large, double and finely formed.
Doctor A. Coques—Clear rosy blush, clouded with purple.
Joasine Hanet—Purplish red, full and double.
Duplesus Mornay—Carmine crimson.
Gustave Coreaux—Purplish crimson.
Edward Jesse—Lilac rose; beautiful.
General Jacqueminot—Brilliant crimson scarlet; very fine, free bloomer.
Giant of Battles—Brilliant fiery crimson, vigorous and free bloomer; unsurpassed.
Gen. Washington—Brilliant crimson; large, very double, free bloomer.
John Hopper—Rose, with rosy crimson center; fine form.
Jules Margottin—Carmine purple, very large, full and beautiful.
La Brilliant—Transparent carmine, bright and beautiful.
La Reine—Deep rosy lilac; very large, full, double and sweet; superb.
- Leopold Lerr*—Deep crimson, fine.
Lion des Combats—Reddish scarlet; brilliant and showy.
Louise Odier—Fine bright rose.
Marechal Vaillant—Bright scarlet; very large and double.
Mad'lle Bertha Baron—Bright rosy crimson.
Maurice Bernardin—Deep crimson.
Mrs. Elliot—Rosy purple, large and fragrant.
Paeonia—Deep reddish crimson.
Pius the Ninth—Bright purplish red, changing to violet, very large.
Prince Camille de Rohan—Intensely dark velvety crimson; distinct and fine.
Prince Chipetouzikoff—Deep pink, full.
Prince Leon—Light rosy crimson.
Professor Koch—Rich deep crimson.
Queen Victoria—Delicate pale blush.
Rev. H. Dombraine—Brilliant crimson; large and full.
Rivers—Brilliant crimson, large, full and free bloomer.
Senator Vaisse—Very large and perfect form; crimson scarlet.
Souvenir de Comte Cavour—Crimson, dark shaded.
Souvenir de la Reine d'Angletere—Bright rosy red; large and full, beautiful.
Standart de Marengo—Deep scarlet crimson.
Sydonie—Light pink; very large.
Triomphe d'Amiens—Bright scarlet crimson, shaded purple.
Triomphe de Nalercienne—Deep rose, large and full.
Vulcan—Purplish violet.
William Jesse—Rosy crimson; very large and full bloomer.

China or Bengal Roses.

Universal favorites of dwarf habit, and bloom abundantly in the open ground from early spring till late in autumn. In a green-house or warm room, may be kept in flower during the winter. At the approach of cold weather, remove to a frame or cover with dry leaves. Price 50 cents each; \$4 per dozen.

- Agrippina*—Rich velvet crimson.
Arch Duke Charles—Rose, changing to crimson.
Cele—Blush; a most profuse bloomer,
Cramoise Superior—Bright crimson; very showy.
Daily or Common—Bright rose; a most profuse and constant bloomer.
Five Colored—Creamy white, striped and mottled various colors.
- Lawrenciana*—Very small, rosy pink; a miniature rose.
Louis Phillippe—Rich dark crimson.
Marjolin—Dark rosy purple.
Queen of Lombardy—Deep rose; free bloomer.
Sanguinea—Deep crimson; a constant and profuse bloomer.
White Daily—Creamy white; pretty but slender growth.

Bourbon Roses.

These are of vigorous growth, with dark rich foliage, blooming continually from June to November, or until frost, and with slight protection, may be left out over winter. No class of roses give greater satisfaction.

Price 50 cents each; \$5 per dozen.

- | | |
|---|---|
| <p><i>Appoline</i>—Light pink, double and compact; a profuse bloomer.</p> <p><i>Bourvis</i>—Bright, rosy crimson; free blooming and dwarf habit.</p> <p><i>Blanch Lafitte</i>—Pale flesh color; full and beautiful.</p> <p><i>Duchess de Thuringe</i>—White, lightly shaded with lilac.</p> <p><i>Edward Defosse</i>—Deep rosy pink; large, full and fine.</p> <p><i>Empress Eugenie</i>—Pale rose, purple edges; large and full.</p> <p><i>Empress Josephine</i>—White, with pink tinge.</p> <p><i>Emilie Courtier</i>—Bright rose, shaded with crimson.</p> <p><i>George Couvier</i>—Rosy carmine; very fine.</p> <p><i>Glorie des Rosamenes</i>—Bright, dazzling carmine scarlet.</p> <p><i>Grandis</i>—Rosy crimson; full and double.</p> | <p><i>Hermosa</i>—Light rose color; full and double.</p> <p><i>Joseph Gourdon</i>—Rosy crimson.</p> <p><i>Levison Gower</i>—Deep rose; very large.</p> <p><i>Louise Odier</i>—Clear rose; full and fine.</p> <p><i>Madame Bosanquet</i>—Pale flesh color; large, double, beautiful.</p> <p><i>Marshal Villars</i>—Deep purplish crimson; showy and fine.</p> <p><i>Phoenix</i>—Bright rosy purple; large and fine.</p> <p><i>Pierre de St. Cyr</i>—Pale rose; large and double.</p> <p><i>Queen of the Bourbons</i>—Fawn colored rose; beautiful, profuse bloomer.</p> <p><i>Sir Joseph Paxton</i>—Bright rose; crimson shaded; large and full.</p> <p><i>Souvenir de Malmaison</i>—Pale flesh, with a fawn shade; large and beautiful.</p> |
|---|---|

Tea Roses.

The Tea roses are esteemed for their perpetual blooming, for their varied beauties of color, size and form, and especially for their exquisite odor. They require protection in winter.

Price 50 cents each; \$5 per dozen.

- | | |
|--|--|
| <p><i>Adam</i>—Brilliant rose; very large; extra.</p> <p><i>Arch Duchess Therese</i>—Creamy white; large and fine.</p> <p><i>Bon Silene</i>—Purple and carmine, shaded with orange.</p> <p><i>Bougere</i>—Bronzed rose; a superb and distinct variety, very hardy.</p> <p><i>Clara Sylvain</i>—Pure white, changing to blush; large and full.</p> <p><i>Devoniensis</i>—Creamy white, center yellow; large and fine.</p> <p><i>Duchess de Brabant</i>—Rosy blush; fine.</p> <p><i>Glorie d' Dijon</i>—Bronze yellow; very large and full; fine foliage.</p> <p><i>Goubalt</i>—Salmon pink; very fragrant, fine buds.</p> <p><i>Homer</i>—Rosy pink, with buff shade; very fine.</p> <p><i>Isabella Sprunt</i>—Bright lemon color; beautiful.</p> | <p><i>La Sylphide</i>—Incarnate blush; a free bloomer.</p> <p><i>La Pactole</i>—Lemon yellow; beautiful.</p> <p><i>Louise de Savoie</i>—Bronzy yellow; large and fine.</p> <p><i>Madame Bravy</i>—Creamy white; large, fine.</p> <p><i>Madame Damazin</i>—Pale yellow, tinged with pink; large, double, and fine.</p> <p><i>Premiere de Charisimes</i>—Bright violet pink, large and double.</p> <p><i>Safrano</i>—Fawn, shaded with rose.</p> <p><i>Souvenir d'un Ami</i>—Rose and salmon, shaded.</p> <p><i>Sombrieul</i>—Creamy white, with rosy tint.</p> <p><i>Strombia</i>—White, with yellow center, large and fragrant.</p> <p><i>Triumph de Luxembourg</i>—Salmon-buff, shaded with deep rose; distinct.</p> <p><i>Triumph de Rennes</i>—Rosy salmon; large and full; free bloomer.</p> |
|--|--|

Noisette Roses.

One of the finest class of autumnal blooming roses. The growth is rapid and vigorous, and the flowers are produced in large clusters. Some of the Noisettes are so hardy as to require very little protection here; but those produced by the crossing with the Tea rose are tender, and ought to be laid down and covered with straw, unless kept in pots.

Price 50 cents each; \$5 per dozen.

<i>America</i> —Creamy yellow, with salmon tinge; a vigorous grower.	<i>Euphrosine</i> —Pale rose, with yellow tinge; fine.
<i>Aimee Vibert</i> —Pure white.	<i>Felleberg</i> —Brilliant crimson; a good pillar rose.
<i>Augusta</i> —Saffron and yellow; fragrant and fine.	<i>Isabella Gray</i> —Deep yellow.
<i>Beauty of Greenmount</i> (from Balt.)—Carmine.	<i>Lamarque</i> —Pale lemon yellow; very large.
<i>Caroline Marinese</i> —White, tinged with flesh; small, double, free bloomer.	<i>Marechal Niel</i> —Bright golden yellow, full and double; fine.
<i>Cloth of Gold</i> (Chromatella)—Deep yellow; sweet, large and beautiful.	<i>Washington</i> —Pure white; strong grower, blooms in immense clusters.
<i>Dr. Kane</i> —Large sulphur yellow; exquisite fragrance.	<i>Woodland Marguerite</i> (from Balt.)—Pure white.

Roses by Mail.

We will send carefully packed and prepaid by mail, eight roses, young, well rooted plants, purchasers selection, from the following list, for one dollar.

<i>Agrippina.</i>	<i>Duchess de Thuringe.</i>	<i>Leveson Gower.</i>
<i>Anna Alexieff.</i>	<i>Felleberg.</i>	<i>Mad. Bravy.</i>
<i>Anna Maria.</i>	<i>Gen. Jacqueminot.</i>	<i>Pink Daily.</i>
<i>Appoline.</i>	<i>Gen. Washington.</i>	<i>Pride of Washington.</i>
<i>Arch Duchess Therese.</i>	<i>Glorie des Rosamenes.</i>	<i>Queen of Bourbons.</i>
<i>Auguste Mie.</i>	<i>Hermosa.</i>	<i>Queen of Prairie.</i>
<i>Baron Prevost.</i>	<i>Lamarque.</i>	<i>Sombrieul.</i>
<i>Beauty of Greenmount.</i>	<i>La Pactole.</i>	<i>Washington.</i>
<i>Chromatella.</i>	<i>La Reine.</i>	<i>White Daily.</i>
<i>Devoniensis.</i>	<i>Lawrenceana.</i>	

Antirrhinums, or Snap Dragons.

Very useful plants for bedding out, having long showy spikes of flowers; they are of easy culture, growing well and blooming freely, in almost any soil.

Price 25 cents each; \$2.50 per dozen.

<i>Amor</i> —White, yellow lip; dwarf.	<i>Harmony</i> —Crimson tipped with white, yellow lip.
<i>Apollo</i> —Light crimson, yellow lip, crimson throat.	<i>Humboldt</i> —Chrome yellow, crimson striped; superb.
<i>Auris</i> —Sulphur yellow, chrome lip.	<i>Kepler</i> —Light yellow, shaded purple.
<i>Brightness</i> —Light crimson, white throat.	<i>Modesty</i> —Blush ground, purple spotted.
<i>Cæsar</i> —Magenta purple, light lip, dark throat.	<i>Nero</i> —Deep maroon, yellow lip.
<i>Charm</i> —Bright Magenta, white throat.	<i>Victory of Metz</i> —Magenta crimson, golden lip, white throat.
<i>Communist</i> —Salmon red, yellow lip.	
<i>Gathe</i> —Deep rich carmine, dark throat.	

Amaranthus Salicifolius—FOUNTAIN PLANT.

This beautiful variety of Amaranth, has attracted much attention. It grows about four feet high, in a pyramidal form, with long narrow leaves, brilliantly colored, crimson, bronze and orange. Plants ready 1st of May. Price 25 cents each.

Calla Ethiopica—EGYPTIAN LILY.

An old favorite, well suited for house culture, as it stands the dry atmosphere quite well, if only well supplied with water at the root. It has large green foliage, and elegantly shaped pure white blossoms, in winter and spring.

Price 25 cents to 75 cents each, according to size.

Calla Ethiopica Nana—DWARF EGYPTIAN LILY.

A dwarf variety, in all parts smaller than the preceding. Price 30 cents each.

Plumbago Larpentæ.

A fine herbaceous plant of low growth, with trusses of flowers of richest shade of deep blue, blooming without interruption from August until frost. It is perfectly hardy and will grow without any special care. Price 25 cents each.

Crimson Crape Myrtle.

A great improvement on the old pink variety; the blossoms, which have a very peculiar shape, looking as if cut out of fine crape or silk, are of a bright deep crimson, and are produced quite freely after the plant gets to be of some size.

Price of small plants, 40 cents each.

Calycanthus Floridus—SWEET-SCENTED SHRUB.

A very desirable hardy shrub with dark green shiny foliage, and peculiar chocolate colored fragrant blossoms. It grows into a nice compact bush, the leaves and branches having a very pleasant spicy odor. Price 50 cents each.

Lonicera Hallicana.

A white monthly Honeysuckle from China; color white, changing to yellow; exceedingly fragrant, and blooms from June until November.

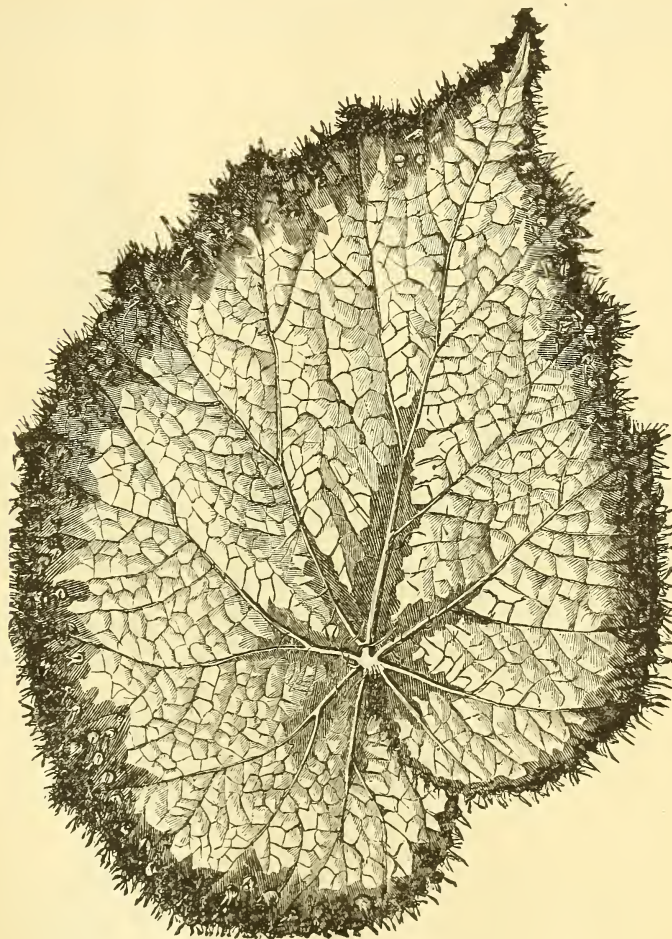
Price for large plants, 50 cents each.

Pyrethrum—GOLDEN FEATHER.

A golden-leaved, hardy, herbaceous plant, that thrives best where it is shady; it forms in one season a clump eighteen inches in diameter and about eight inches in height. Its leaves, which are about nine inches in length, range with the season from straw color to deep yellow, and from their formation and shade of color, the plant is most appropriately named "Golden Feather." Price 25 cents each.

Artemisia Stellaris.

Owing to the great usefulness of variegated foliage plants, more attention is paid to them, and new varieties are introduced every year. The above is one of the best of those with silver foliage; its stems, branches and leaves are alike covered with silky white hair, giving the plant a charming silvery appearance, making a fine contrast when planted in lines in front of dark Coleus or Achyranthus. It is of free growth, and stands the sun well. Price 25 cents each.

**Begonias.**

These are fine plants, with showy foliage, in great variety of colors, suitable for planting in baskets or vases in shady situations. The above cut shows some of the striking markings and variegations.

We offer the following as very desirable varieties. Price 30 to 50 cents each.

Argyrostichma,
Coccinea Alba,
Inimitable,
Lord Clyde,

Manicata.
Mrs. Low,
Mrs. R. L. Stewart,
Rex,

Robt. Buist
Ricinifolia,
Roi Leopold,

Sanguinea,
Speciosa,
Van der Wickii,

Begonias.—FLOWERING VARIETIES.

While the preceding varieties are grown for their fine foliage, the following are desirable for their flowers; some of them being most abundant bloomers.

Price 25 cents each, except where noted.

<p><i>Dregii</i>—Pure white flowers; dwarf habit. <i>Fuchsiodes Coccinea</i>—Crimson, fuchsia-like flowers. <i>Glaucophylla Scandens</i>—Orange salmon colored flowers. 50 cents.</p>	<p><i>Hybrida Multiflora</i>—Rosy pink blossoms. <i>Nitida Alba</i>—Large trusses of creamy white flowers. <i>Semperflorens</i>—Crimson wax-like flowers. <i>Welltoniensis</i>—Waxy-pink blossoms. 35cts.</p>
---	--

**Ferns and Lycopods.**

These are very desirable for Wardian cases and ferneries, for planting on rock work in shady places, for hanging baskets, or for the parlor and conservatory.

Price 25 to 50 cents each, according to size and variety. We will send 6 ferns and 6 lycopods, our selection of varieties, for \$3.

Double Pink Oleander.

This is an old well known favorite plant producing large clusters of double pink, flowers throughout the summer months; it is of easy culture, and can be kept over winter in a cellar, even without any light. Price 25 to 75 cents each.

Spiræa Thunbergii.

A miniature variety of Spiræa, forming a neat bush 12 to 18 inches high, with very small foliage, and trusses of white blossoms; perfectly hardy. Price 50 cents each.

Spiræa Callosa.

Hardy shrub; large panicles of rose-colored blossoms; blooms for a long time very desirable. Price 50 cents each.

Spiræa Callosa Alba.

The old variety has been some years known as one of the finest summer flowering shrubs; this is similar, but with white flowers, and most desirable.

Price 50 cents each.

Prunus Sinensis Alba Plena.

A double white flowering almond, introduced some years ago, but not yet known near as much as it deserves to be. It is, in our opinion, one of the finest spring blooming shrubs; it resembles the well known pink flowering almond in every respect except color, being of pure white, very double, like small white roses; perfectly hardy. Strong plants of blooming size. Price 50 cents each.

Weigelia Amabilis Alba.

A hardy shrub; beautiful; white, blooming both in spring and autumn. Price 50 cents each.

Weigelia Gronewegenii.

A hardy shrub; flowers reddish violet, changing to deep red; a most profuse bloomer, showy and fine, blooming a second time in the fall; very desirable.

Price 50 cents each.

Weigelia Desboises.

Also hardy; has deep rose-colored flowers, fading to white, having the appearance of two distinct flowers on the same cluster; a great bloomer; very desirable.

Price 50 cents each.

Weigelia Verschaffeltii.

Bright pink, free blooming; desirable. Price 50 cents each.

Weigelia Van Houttii.

Carmine, with silvery white petals, and lilac spots. Price 50 cents each.

Deutzia Crenata Flora Plena.

A very pretty hardy shrub, imported within the last few years; it has double white bell-shaped flowers, which are produced in clusters three to four inches long, all over the plant in late spring—neat and attractive. Price 50 cents each.

Deutzia Gracilis.

An old, yet one of the prettiest hardy shrubs of small size in cultivation; of dwarf compact habit, with slender branches and small leaves; growing in neat, compact shape, it never exceeds two and a half to three feet in height, making it very desirable for small gardens, or where tall growing shrubs are objectionable. In May it is completely covered with trusses of pure white blossoms, which bear a close resemblance to the Lily of the Valley. Price 50 cents each.

Deutzia Gracilis Fol. Var.

A new variety of the above, with green and white variegated foliage. Alike in all other respects. Price, for small plants, 75 cents each.

Hardy Ornamental Vines.

These desirable plants could ill be spared from our list. Clambering over arbors, trellises, rustic seats, etc., they give a needed variety to the garden. They are also useful for covering screens and unsightly places.

Ampelopsis (Virginia Creeper or American Ivy), *Bignonia* or *Trumpet Creeper*, *Honey-suckles*, *English Ivy*, *Wistaria*, *Clematis*, *Cissus Quinquifolia Variegata*.

Price 50 cents each; \$4 per dozen.

Hardy Herbaceous Plants.

Of these useful plants we have a large and fine assortment. Below we name a few of the most desirable:

Clematis Erecta, 25 cents each. *Daisies*, 20 cents each; \$2 per dozen. *Double Herbaceous Paeonies*, 24 fine named sorts, 25 to 50 cents each; \$3 per dozen. *Hollyhocks*, many colors, 25 cents each. *Hemerocalis Fulva*, orange flowers in large clusters, 25 cents each. *Hemerocalis Graminea*, fine yellow, 25 cents each. *Iris*, many fine varieties, 25 cents each. *Primula Auricula*, in varieties, 25 cents each. *Spiræas Herbaceous*, *Ulmaria*, white; *Lobata*, red; *Japonica*, white; 25 cents each. *Tree Paeonies*, \$1 each. *Tradescantia Cærulea*, 25 cents each.

Miscellaneous Greer-House Plants.

Amaryllis Formosissima—35 cents each.

Azaleas Chinese—A fine collection. 75 cents to \$1 each.

Camellia Japonica—Many different varieties. \$1 to \$5, according to size.

Chinese Primrose (single)—Crimson, white, rose and carmine shade. 35 to 50 cents each.

Cissus Discolor—Beautiful foliage plant. 25 to 50 cents.

Dracæna Terminalis—75 cents.

Dwarf Orange—Orange trees in miniature; very beautiful and ornamental. 50 cents to \$1 each.

Ficus Elasticus (India Rubber Tree)—Fine foliage. 50 cents to \$1 each.

Gloxinias—In variety; tuberous rooted plants, with tube shaped flowers of various colors. 50 cents each.

Hibiscus Sinensis—Double crimson, double yellow, single scarlet. 50 cents each.

Lycopodium—In variety. 25 cents each.

Stevia—*Compacta*, *Serrata*, *Lindleyana*—Winter blooming plants, with white flowers. 25 cents each.

Tradescantia Zebrina—Zebra plant. 25 cents each.

Viburnum tinus, *Laurustinus*—Evergreen green-house shrub, covered with trusses of white flowers in winter. 50 cents to \$1 each.

PLANTS FOR RUSTIC VASES, BASKETS, Etc.

To those who have not suitable places for growing flowers in pots, the rustic basket or hanging-basket makes a beautiful window ornament, takes up but little room, and is deservedly one of the most popular of home decorations. The following are desirable plants for that purpose:

Price 25 cents each, except where noted; \$2 per dozen, our selection.

Acorus Gramineus Variegata—Very desirable.

Achyranthus—Four varieties. Leaves rich carmine and variegated.

Alternantheras—In six distinct varieties.

Ampelopsis—Tricolor and Veitchii. 25 to 50 cents.

Artemisia Stellaris—Silvery gray foliage.

Centaurea Candidissima and *Gymnocarpa*—Silvery gray foliage.

Cissus Discolor—Variegated foliage, silver gray and purple. 25 to 50 cents.

Cocolobia Platyclada—A curious flat-stemmed plant; excellent for baskets.

Coleus—Many varieties, golden and variegated.

Euonymus Radicans Variegata—See special description.

Ferns—See special description. 25 to 50 cents.

Ficus Repens—A very hardy, drooping variety.

German or Parlor Ivy—

Gnaphalium Lanatum—See special description.

Hedera—Ivies in variety. Strong plants.

Isolepis Gracilis—Beautiful grass-like foliage.

Konigia Maritima Variegata—Variegated Sweet Alyssum.

Linaria Cymbalaria—A beautiful variety of Ivy-leaved Toad Flax.

Lobelia—Several varieties. Drooping.

Lysimachia Nummularia—Ladies Wreath.

Lycopodium and Selaginella—Mosses in variety.

Maurandias—Three varieties.

Nephrodium Exaltatum—See special description. 50 cents.

Panicum Variegatum—See special description.

Pelargonium Lateripes—Ivy Geranium.

Saxifraga Sarmentosa—Beefsteak Geranium.

Sedum Carneum Variegatum—Drooping white and green foliage.

Torrenia Asiatica—Deep purple tube-shaped flowers.

Tradescantia Zebrina—Striped Spiderwort.

Vinca Variegata—Variegated running Myrtle.

HOW TO TAKE CARE OF PLANTS WHEN RECEIVED.

When we send plants to distant points, by Express, they are, with very few exceptions, taken from pots, to save expressage. Upon receipt, they should be carefully unpacked, leaving as much of the soil attached to the roots as possible. If the plant should be so thoroughly rooted as to make one compact matting of roots, the ball should be loosened, and a portion, say one-fourth of the outside fibrous roots, removed. This is essential, whether for garden or pot culture, and will ensure a more certain and vigorous growth.

If intended for pot culture they should be repotted, in pots one size larger than they have been grown in, should be shaded and watered sparingly, for 8 or 10 days, until they begin to make new roots, when they may be watered more freely and exposed to full sun light. If for garden culture, and danger of frost has passed, they may be planted out at once; the beds should be well loosened, and the plants placed a little deeper than they have been in pots. After pressing the soil gently, about the ball, give a thorough watering, and if the weather is bright, shading for a few days may be necessary.

Plants sent by mail will require more careful attention, as a large portion of the soil has to be removed in packing, and after a number of days of close confinement, are more sensitive to bright sunlight, and should not, therefore, be exposed to the direct rays of the sun. They should be treated as before mentioned, but by no means kept in a dark place, as shading in all cases should only be a protection against bright sunshine, and not against light.

Special Collection of Plants for the Flower Garden.

90 plants for \$10, about one half regular rates.

For the convenience of those not familiar with the different varieties of plants, and desirous of having a fine display of flowers during the entire Summer months, we offer the following collection, embracing the most showy and distinct varieties, and those of easy culture, and which cannot fail to give satisfaction to the purchaser. Growing these plants in large quantity, we are able to make this liberal offer. *Selection of varieties must be left to us; changes in the list are not contemplated.*

They will be carefully packed, and delivered at Express Office here. The collection cannot be sent by mail.

6 Monthly Roses,	2 Lemon Verbenas,	2 Double White Feverfew,
25 Verbenas,	4 Chrysanthemums,	4 Double Tuberoses,
3 Heliotropes,	2 Ageratum,	2 Silver-leafed Geraniums,
4 Fuchsias,	2 Scented Geraniums,	4 Lantanas,
3 Petunias,	2 Scarlet Salvias,	2 Gladiolus,
5 Scarlet Geraniums,	2 Alternantheras.	2 Lobelias,
2 Dahlias	2 Coleus,	1 Canna,
2 Pansies,	1 Lychnis,	1 Double Geranium,
1 Cuphea,	4 Monthly Carnations,	(Mad. Lemoine.)

For \$6 we will send one-half of the above collection.

Premium Offer.

Clubs and others, sending us twenty dollars, may select any plants in this catalogue (except above special collection) to the amount of twenty-five dollars, and at the same rate when a larger amount is sent.

Plants by Mail.

WHEN THE MONEY ACCOMPANIES THE ORDER, we will send by mail, Plants, carefully packed and postage paid, but ONLY when the plants desired AMOUNT TO ONE DOLLAR AND UPWARDS. The Plants will be smaller than those we send by Express. In case the Plants desired cannot be mailed, the money will be refunded.

Plants by Express.

This is much the most satisfactory way of sending, as the plants will be much larger and stronger, and will be received in better order. We earnestly recommend our customers to have their Plants sent this way.

Bulbous Flower Roots.

A collection of the best Dutch Bulbs, Hyacinths, Tulips, Crocus, &c., &c., is imported annually, and can be forwarded from the first of September.

Gold Fish and Plants for Aquaria.

Ferns, Lycopodiums, etc., for Wardian Cases.

Bouquets, Cut Flowers and Floral Decorations for Parties, Weddings, Suppers, etc.

Wreaths, Crosses, Anchors, and other appropriate designs for Funerals, arranged in the best style.

T H E

COLUMBUS NURSERY

Offers to the Tree Planting Public, the largest and best assorted stock of

Trees, Shrubs, Plants, Etc.

In the West, all being carefully grown, and adapted to Western and Southern wants.

*Fruit Trees, Standard and Dwarf,
Ornamental Trees and Evergreens,
Roses, Shrubs and Climbers,
Small Fruits, in Great Variety,
Herbaceous Plants and Bulbous Roots.*

*Trees for the Orchard,
Trees for the Garden,
Trees for the Lawn,
Trees for the Street,
Trees for Avenues,
Trees for Parks,
Trees for Cemeteries.*

👉 Descriptive Catalogue, giving Prices, etc., sent to Applicants. 👈

"The writer has, during the last five or six years, purchased largely from the Columbus Nursery, and takes pleasure in bearing testimony to the promptness and fidelity with which all his orders have been filled."—*Commercial, Louisville, Ky.*

"We have annually, for several years past purchased from him, and have no hesitancy in recommending him to our readers, as perfectly reliable."—*Statesman, Lexington, Ky.*

"One of the most widely and favorably known Nurseries in the country."—*Country Gentleman, Albany, N. Y.*

"Thorough, deep and clean culture is the rule here, and the consequence is stock of the first quality."—*Journal, Indianapolis, Ind.*

"The Columbus Nursery is situated on South High street, a short distance south of the Street Railroad terminus. It is the most extensive in the State, and the most complete. It is a beautiful place, with its acres of evergreens, flowers, beautiful trees, and its pleasant walks, and we wonder not that it is much visited.

"About 300,000 apple grafts are planted annually; pears, cherries, peaches, plums and other fruits are grown largely, and there are acres of evergreens and deciduous trees for the street and lawn.

"The growing of roses is made a specialty. There are on the place six green houses, over 10,000 feet of glass being used for propagating purposes. In these green houses are every variety of flowers, from the simplest to those most prized. Shrubs in great variety, grapes and small fruits, including all the old as well as the new varieties, make an attractive feature of the grounds.

"During the busy season there are employed on the grounds about sixty persons. The trade extends to all parts of Ohio and to West Virginia, Indiana, Kentucky, Tennessee, and as far west as Nebraska."—*State Journal, Columbus, Ohio.*

INDEX.

	PAGE.		PAGE.
Abutilon.....	9, 16, 24, 31	Jasmine.....	10
Acalypha.....	11	Kenilworth Ivy.....	28
Achillea.....	34	Konigia.....	31
Achyranthus.....	13, 18	Lantanas.....	41
Acorus.....	34	Lemon Verbena.....	18
Aceratum.....	25	Libonia.....	27
Akebia.....	22	Lilies.....	40
Alonsa.....	30	Lily of the Valley.....	34
Altermanthera.....	39	Linaria.....	11
Amaranthus.....	54	Lobelia.....	27
Ampelopsis.....	13, 58	Lonicera.....	28, 54
Antirrhinums.....	53	Lychnis.....	22
Anemone.....	26	Lysimachia.....	28
Artemisia.....	55	Macleya.....	17
Arundo Donax.....	9	Madeira Vine.....	18
Astilbe.....	22	Maurandia.....	27
Begonias.....	9, 25, 30, 31, 55, 56	Miscellaneous.....	59
Bousingaultia.....	13	Money-wort.....	28
Bonvardius.....	7, 9, 19	Myosotis.....	34
Bulbous Flower Roots.....	60	Myrsiphyllum.....	21
Caladiums.....	28, 29	Nephradium.....	12
Calceolaria.....	29	Nierembergia.....	17, 27
Calla.....	54	Oleander.....	7, 57
Candytuft.....	33	Pampas Grass.....	33
Canna.....	5, 16, 36	Panicum.....	5, 11
Cape Jasmines.....	18	Pansy.....	31
Carnations.....	37, 38	Papaver.....	13
Centauria.....	24	Passiflora.....	25
Chrysanthemums.....	47, 48	Peperomia.....	11
Coleus.....	34	Peristrophe.....	7
Convalaria.....	34	Petunias.....	11, 41
Cobea Scandens Variegata.....	20	Pelargoniums.....	29
Calycanthus.....	54	Phloxes.....	11, 49
Cuphea.....	26	Plumbago.....	30
Cyclamen.....	24	Poinsettia.....	38
Cyperus.....	6, 7	Plumbago.....	40, 54
Coccoloba.....	10	Poinsettia.....	11
Cestrum.....	12	Prunus.....	57
Crape Myrtle.....	5, 54	Primroses.....	32, 58
Dahlia.....	42	Pyrethrum.....	5
Daisies.....	58	Reineckia.....	74
Delphinium.....	27	Roses select.....	38, 39
Deutzia.....	58	" Bourbon.....	52
Dielytra.....	29	" China.....	51
Dwarf Orange.....	58	" Climbing.....	50
Echeveria.....	20	" Hybrid Perpetual.....	51
Erianthus.....	9	" Moss.....	50
Erythrina.....	5, 21	" Noisette.....	53
Euonymus.....	25	" Tea.....	52
Euphorbia.....	15	Richardia.....	14
Eranthemum.....	7	Salvias.....	13, 14, 25, 36, 43
Eupatorium.....	31	Sanchezia.....	9
Ferns.....	56	Santolina.....	15
Feverfew.....	16	Sedum.....	15, 34
Fittonia.....	15	Smilax.....	21
Forget Me Not.....	34	Solanum.....	29
Fruit Trees.....	61	Special collection.....	60
Funkia Alba.....	15	Spiraea.....	57
Fuchsias.....	31, 32, 46	Tigridia.....	27
Gazania.....	19	Torrenia.....	16
Geraniums.....	7, 10, 15, 23, 27, 28, 29, 44, 46	Tradescantia.....	13
Glaucolus.....	32	Tree Peonies.....	58
Glecoma.....	29	Tritoma.....	23, 24
Golden Feather.....	54	Tuberose.....	19
Gold Fish.....	60	Udhea.....	11
Gnaphalium.....	31	Verbena.....	43
Gymnotrix.....	7	Veronica.....	10, 36
Hardy Vines.....	58	Violets.....	39
Heliotropes.....	49	Vines.....	18, 41
Honeysuckles.....	28, 54	Wax Plant.....	15
Hoya.....	15	Weigelia.....	57
Hydrangea.....	32	Yucca.....	16
Ivy.....	31, 35		