

AST

PLAT OF 188 SPRING ST.  
LOCATED ON THE EAST SIDE OF SPRING ST.

CHARLESTON S. C.

SURVEYED FEB-18<sup>th</sup>-1911.

FOR

MR. PHILIP FLOETHMANN.

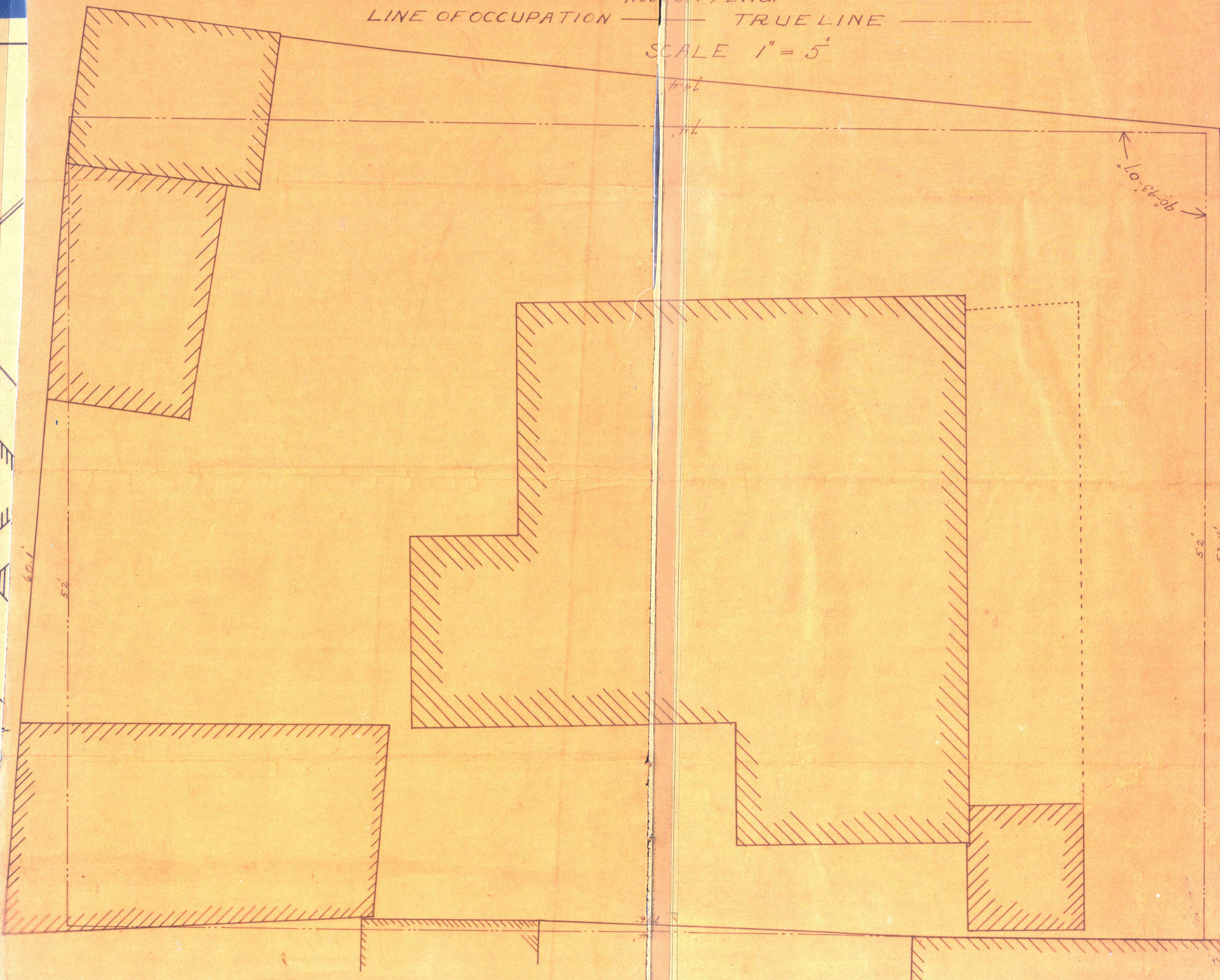
BY

*E. M. Howe*

ASS. CITY ENG.

LINE OF OCCUPATION ——— TRUE LINE ———

SCALE 1" = 5'



SPRING ST.

701

707