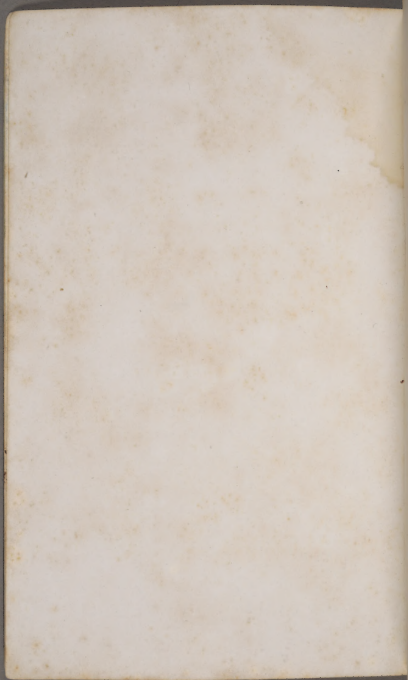
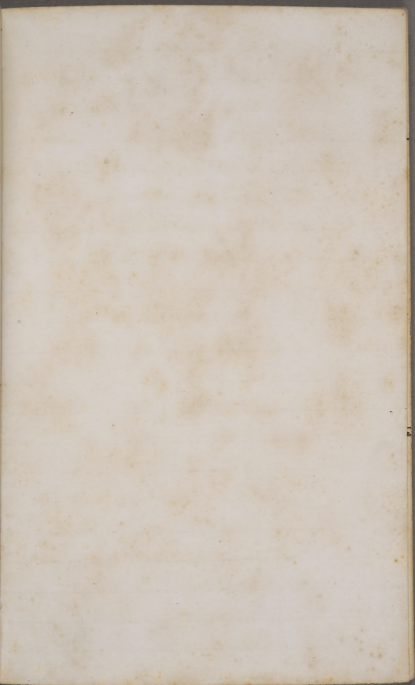


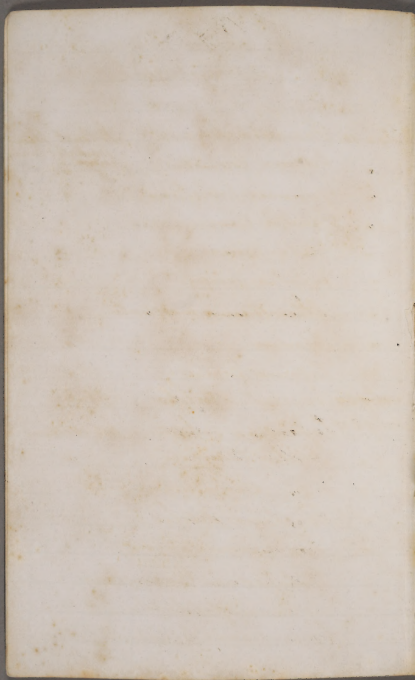


116-91
1207
151
8
29
28
2









D 1869.

Collecting Book

From June, 1869.

July 6-10.	<i>Marattia salicoma</i>	W. Coast between Nankali & Man -ukha.
"	<i>Dioscorea</i> <i>Ureumata</i>	"
"	<i>Quercus prorepens</i>	"
"	<i>Mentha</i> <i>Cunninghamii</i>	"
"	<i>Potamogeton</i>	"
"	<i>Crantzia lineata</i>	"
"	<i>Microsperma</i> <i>moschata</i>	"
"	<i>Podium</i>	"
"	<i>Eugenia</i> <i>Maire</i>	"
July 21	<i>Cynanthes</i> <i>turloba</i>	"
July 24	<i>Caprosma</i> <i>robusta</i>	W. Melang to
"	<i>Asplenium</i> <i>Banksii</i>	"
"	" <i>Cunninghamii</i>	"
"	<i>Pavetana</i> <i>debilis</i>	"
"	<i>Poa</i> <i>umbecula</i>	"
"	<i>Polypodium</i> <i>Cunninghamii</i>	"
"	<i>Asplenium</i> <i>flabellifolium</i>	"
"	<i>Cyrtandra</i> <i>Cephalophylla</i>	"

1869.

July 30	<i>Miscotania macrophylla</i>	S Whau
"	<i>Epacris pauciflora</i>	"
"	<i>Diacophyllum</i>	"
"	<i>Ptilosporum cornifolium</i>	"
"	<i>Cladum glomeratum</i>	"
"	<i>Asplenium Hookerianum</i>	"
Aug 21	<i>Lithospermum arvense</i>	Panmure
"	<i>Veronica Buxbaumii</i>	"
"	<i>Brassica</i>	"
"	<i>Zostera marina</i>	Matemata
"	<i>Calendula officinalis</i>	Kohimarama
"	<i>Vicia</i> - - - -	Panmure
"	<i>Pterostylis trullifolia</i>	<u>Panmure</u>
" 27	<i>Callitriche romana</i>	"
"	<i>Asplenium flaccidum</i>	"
"	<i>Siphona tetraptera</i>	"
"	<i>Rubus australis</i> y	"
"	<i>Lupinus</i> sp	"
"	<i>Narcissus poeticus</i>	"
"	<i>Passia</i> sp.	"
" 30	<i>Nephtodum velutinum</i>	Orakei Pt.

1869.

Sept 6	<i>Podium acutatum</i>	Remusa
"	<i>Hakea</i> - sp.	Mr. Mober
"	<i>Cytisus</i> sp.	Uhan
"	<i>Trochomanes renatum</i>	Tetiarugi
"	<i>Rymenophyllum scabrum</i>	"
"	" <i>marginatum</i>	"
"	<i>Coryphanthes viviparis</i>	"
"	<i>Dacrydium Cupressinum</i>	"
"	" nov. sp.	"
"	<i>Episoma</i> nov. sp.	"
"	<i>Santalum Cunninghamii</i>	"
"	<i>Panax Edgerleyi</i>	"
" 12	<i>Rubus australis</i> -	Purewa
" 12	<i>Pardalinia hirsuta</i>	"
" 13	<i>Hakea</i> _____	Tetiarugi
"	<i>Podocarpus dacrydioides</i>	"
"	<i>Cladium teretifolium</i>	"
"	<i>Pumila longifolia</i>	"
"	<i>Pleistylis gracilis</i>	"
"	" <i>puberula</i>	"
"	<i>Rymenophyllum multifidum</i>	"

1869

Sept. 18	<i>Cystostegia oblonga</i>	Hitianga
" 20	<i>Pennis Puraster</i>	Purua
" 20	<i>Clematis indivisa</i>	"
" 25	<i>Poa annua</i>	"
" 25	<i>Spergula sp.</i>	"
" 25	<i>Myosotis sp.</i>	"
" 25	<i>Cystostegia oblonga</i>	"
" 25	<i>Corysanthes oblonga</i>	"
Oct. 9.	<i>Ecatelea arborescens</i>	"
" 16.	<i>Cladium articulatum</i>	Colley Lake
" 16	<i>Pterochloa reddens</i>	"
" 16	<i>Carex</i>	"
" 16	<i>Protosideros diffusa</i>	Mt Wellington
" 16	<i>Coprosma</i>	Colley Lake
" 19.	<i>Veronica serpyllifolia</i>	Pannare
" 19	<i>Pleurislylis Banksii</i>	"
" 19.	<i>Cardamine hirsuta</i>	"
" 23	<i>Laguna apetala</i>	North Head
" 23	<i>Carex Vaccillans</i>	"
" 23	<i>Senecio lustris</i>	"
" 23	<i>Juncus antarcticum</i>	"

1859.

2223	<i>Agrostis annua</i>	South Head
" 23	<i>Bromus arenarius</i>	"
" 23	<i>Stelis coccineolata</i>	"
" 25	<i>Parnassia veris</i>	Parewa
" 25	<i>Thymus serpyllorum</i>	"
" 25	<i>Pumex obtusifolius</i>	"
" 25	" <i>crispus</i>	"
" 25	<i>Hasturtium pratense</i>	"
" 25	<i>Pileire Guineguenulera</i>	"
" 25	<i>Bromus</i>	"
" 25	<i>Poa pratensis</i>	"
" 25	<i>Carex lucida</i>	"
" 25	<i>Schœnus axillaris</i>	"
" 26	<i>Luzula campestris</i>	"
" 26	<i>Urtica australis</i>	"
Nov.	<i>Pitrisporum</i>	Wharangi
" 1	"	"
" 1	<i>Trinys axillaris</i>	"
" 1	<i>Meliclytus</i> n. sp.	"
" 1	<i>Onchidea</i> n. sp.	"
" 1	<i>Dryopteris?</i>	"

1869

No. 1	<i>Naloragis depressa</i>	Pittsburg
" 1	<i>Cyperus tenuellus</i>	"
" 1	<i>Schizaa tetrastoma</i>	"
" 1	<i>Pennis incisa</i>	"
" 1	<i>Aspidium emarginatum</i>	"
" 1	<i>Panicum spicatum</i>	"
" 1	<i>Cochlea biddleoides</i>	"
" 1	<i>Lomaria nigra</i>	"
" 1	" <i>fluvialis</i>	"
" 1	<i>Asplenium grande</i>	"
" 6	<i>Eleocharis acuta</i>	Colony Lake
" 6	" <i>gracillima</i>	"
" 6	<i>Carex testacea</i>	"
" 6	<i>Scolopis juniper</i>	"
" 8	<i>Robinia pseud-acacia</i>	Purcell
" 8	<i>Carex arisida</i>	"
" 8	<i>Sporobolus elongatus</i>	"
" 8	<i>Calodera muon</i>	"
" 8	<i>Coupsanthus oblonga</i>	"
" 9	<i>Coprosma acerosa</i>	"
" 9	<i>Hypochaeris scaberrima</i>	"

1869.

- No 12. *Convolvulus Odianella* Kikimara
- " 12 *Bromus mollis* "
- " 12 " *arvensis* "
- " 13 *Cynodon dactylon* "
- " 3 *Poa anceps* "
- " 13 *Euphorbia* Lake Pupuke
- " 13 *Coprosma pedicata*? (Baum.) "
- " 13 *Viola Lyallii* "
- " 13 *Pennisetum Crossopium* "
- " 13 *Elaeocarpus dentatus* "
- " 16 *Carex inversa* Parame
- " 16 *Pterostichia Banksii* "
- " 22 *Passiflora tetrandra* "
- " 23 *Myosotis Fosteri* Matatani R
- " 23 *Libertia grandiflora* "
- " 23 *Phoenicum Crenosi* "
- " 23 *Schannus Tenax* Titirangi
- " 23 *Aira Caryophylla* "
- " 24 *Apium filiforme* Purewa
- " 24 *Thelypodium Forsteri* "
- " 24 *Dianthus Newzealandicus* B. "

Dec 8	<i>Thorum</i> <i>tenax</i>	Pureva
" 8	<i>Diarella</i> <i>intermedia</i>	"
" 8	<i>Dactylis</i> <i>glomerata</i>	"
" 8	<i>Scutella</i> <i>scadentata</i>	Pamure
" 8	<i>Ranunculus</i> <i>civabain</i>	"
" 8	<i>Carex</i> <i>Rasoulii</i>	Pureva
" 13	<i>Festuca</i> <i>scaberrima</i>	"
" 13	<i>Meua</i> <i>patua</i>	"
" 13	<i>Festuca</i> <i>homoides</i>	"
" 13	<i>Seranium</i> <i>microphyllum</i>	"
" 13	<i>Carex</i> <i>Lamberiana</i> ?	"
" 21	<i>Hypericum</i> <i>humifusum</i>	"
" 21	<i>Seranium</i> <i>dissertum</i>	"
" 21	<i>Bromus</i> <i>racemosus</i>	"
" 21	<i>Trifolium</i> <i>pratense</i>	"
" 23	<i>Ranex</i> <i>conglomeratus</i>	"
" 23	<i>Trifolium</i>	"
" 23	<i>Trifolium</i> <i>repens</i>	"
" 23	<i>Vicia</i> <i>tetrasperma</i>	"
" 23	<i>Euphorbia</i> <i>Cuticularis</i>	"
" 23	<i>Epilobium</i> <i>pusillum</i>	"

- Dec 23. *Chrysanthemum Leucanthemum Purpureum*
 " 23 " " "
 " 23 *Melilotus peruvianum* "
 " 23 *Laguna?* "
 " 24 *Solanum tuberosum* "
 " 24 *Phaseolus Cavariensis* "
 27 *Brassica rapa* "
 27. *Epilobium yuccinum* "
 28. *Triglochin trandicum* "
 30 *Linaria elatina* Auckland
 30 *Chenopodium* "
 30 *Arthemisia trobilis* "

- 1840 -

Dec. 10	<i>Oothoceras</i> <i>Stander</i>	Victoria
" 11	<i>Cephaelis</i> <i>propinqua</i>	Stewartia
Jan 11	<i>Rumex</i> <i>flexuosus</i>	Parsons
" 14	<i>Physalis</i> <i>sp.</i> —	Panama
" 15	<i>Epilobium</i> <i>junceum</i>	Clay Lake
" 15	<i>Proclitium</i> <i>galustee</i>	"
" 15	<i>Stamajetou</i> <i>scabens</i>	"
" 15	<i>Spurmus</i> <i>subrotus</i>	"

Feb. - 10 - March 4. -

"	<i>Arundo</i> <i>Santhoua</i> <i>Camusini</i> <i>Manjerici</i>	
"	<i>Oralis</i> <i>magillanica</i>	"
"	<i>Veronica</i> <i>longata</i>	"
"	" <i>diostymifolia</i>	"
"	" <i>lescurifolia</i>	"
"	" <i>pauciflora</i>	"
"	" <i>sabiceifolia</i>	"
"	<i>Hydrocotyle</i> <i>microphylla</i>	"
"	<i>Dicksonia</i> <i>laevata</i>	"

<i>Melrosideros</i>	<i>Raukii</i>	<i>Shanpei</i>
"	<i>quercifolia</i>	"
<i>Melrosideros</i>	<i>albiflora</i>	"
<i>Chenopodium</i>		"
<i>Scheuchzeria</i>	<i>dicotoma</i>	"
<i>Pelliosporum</i>	<i>umbellatum</i>	"
"	<i>nov. sp.</i>	"
—	—	(No.?)
<i>Olea</i>	<i>Cunninghamii</i>	"
<i>Myrtus</i>	<i>obcordata</i>	"
<i>Loasa</i>	<i>Cunninghamii</i>	"
<i>Rafantheris</i>	<i>reticulata</i>	"
<i>Pteris</i>	<i>hercynoides</i>	"
<i>Ozothamnus</i>	<i>glomeratus</i>	"
<i>Pinodermis</i>	<i>Edgerlyi</i>	"
<i>Asplenium</i>	<i>Forkerianum</i>	"
<i>Clusia</i>	<i>crocea</i> ?	"
<i>Pteris</i>	<i>Eudlichiensis</i>	"
<i>Epicarpum</i>	<i>microphyllum</i>	"
<i>Arctostaphylos</i>	<i>Jussilla</i>	"
<i>Urtica</i>	<i>in creta</i>	"

Feb 10 - March 24 1890

1940.

- July 11 Lycopodium laterale Titirangi
- " 11 Leucopogon Sharrei "
- " 26 Epacris purpurascens Paparotui
- " 26 Galunia chenopodiifolia "
- " 27 Parnassia antiochiana Purua
- Aug 1 Galunia lacera " "
- " 1 Asplenium lucidum "
- Aug 13 Cyathopterium punctatum Mt Wellington
- " 13 Polypodium Cunninghamii "
- " 13 Nymenophyllum ~~parvifolium~~ "
- " 13 Tuckermannia humilis " "
- " 13 Brachyglottis repanda "
- " 13 Asplenium flabellifolium " "
- " 13 " lucidum " "
- " 13 Parnassia debilis " "
- " 13 Brassica campestris " "
- Aug 15 Coprosma Cunninghamii North Shore
- " 15 Veronica salicifolia, var. "
- " 20 Pterostyles trullifolia Purua
- " 20 Cyrtostyles obtusa "
- " 20 Asplenium bulbiferum "

June 3	<i>Cypripedium Chusemanii</i>	Pinewa
" 10	" <i>Chusemanii</i>	"
" 10	<i>Acianthus Linclainii</i>	"
" 10	<i>Pterostylis trullifolia</i>	"
" 10	<i>Adiantum fulvum</i>	"
" 10	<i>Asplenium lucidum</i>	"
" 10	<i>Dryocorylum spectabile</i>	"
" 10	<i>Polypodium rupestre</i>	"
" 12	<i>Epacris franciflora</i>	Papahua
" 12	<i>Lycopodium laterale</i>	"
" 26	<i>Cypripedium Chusemanii</i>	Pinewa
" 26	<i>Acianthus Linclainii</i>	"
" 29	<i>Cypripedium Chusemanii</i>	Pinewa
" 29	<i>Pterostylis puberula</i>	"
July 2	<i>Cypripedium Chusemanii</i>	"
" 2	<i>Acacia dealbata</i>	Panmure
" 2	<i>Richardia aethiopica</i>	"
" 10	<i>Acacia longifolia</i>	Tatouape
" 11	<i>Cyrtostylis rotundifolia</i>	"
" 11	<i>Gahnia scapifera</i>	"
" 11	" sp.	"

Oct 4	<i>Corymbites oblonga</i>	Pancrea
" "	<i>Gemostoma ligustifolia</i>	"
" "	<i>Leucopogon fasciculatus</i>	"
" 6	<i>Olea montana</i>	Salicamp. Range
" 6	<i>Podicia hutchinsiana</i>	"
" 6	<i>Myrsine salicina</i>	"
" 6	<i>Melicope Georgii</i>	"
" 6	<i>Aquacrophylum</i>	"
" 6	<i>Libertia micrantha</i>	"
" 6	<i>Corymbites retusoides</i>	"
" 6	<i>Gahnia</i> sp	"
" 6	<i>Thelypodia imberbis</i>	"
" 6	<i>Paladonia minor</i>	"
" 8	<i>Erechtites arguta</i>	Nh. Wellington
" 8	<i>quadridentata</i>	"
" 8	<i>Mitrosideros diffusa</i>	"
" 8	<i>Ranunculus parviflorus</i>	"
" 11	<i>Corokia cotoneaster</i>	Pipounga
" 11	<i>Phytolacca frutescens</i>	"
" 11	<i>Pumila longifolia</i>	"
" 11	<i>Coprosma</i>	"

Sept 20. *Asplenium Cumingii* ^{Pearson} 29 20 27

Aug 27. *Erythraea Kalkii* Pearson

" *Peperomia Kivilleana* "

" *Poa inaequalis* "

" *Peperomia divaricata* "

" " *Cunninghamii* "

Sept 8. *Phylloglossum Drummondii* *Sittonyi*

" *Polypodium multifidum* "

" *Lycopodium Cernuum* "

" *Pomadouria elliptica* "

" *Melicope tenax* "

" *Coprosma spathulata* "

" 18. *Coprosma Busa-pactoris* Pearson

" 24 *Coprosma robusta* "

" *Secura sanguisaba* "

" *Edwardsia grandiflora* "

" *Papuanthus ~~puberula~~ ^{diversicarpa}* "

" *Plematis undivisa* "

Oct 4 *Coprosma lucida* "

" *Trichomanes germanica* "

" *Spiza opulifolia* "

- Nov. 1. *Linum marginatum* Penna
 " 1 *Pomadouria plicifolia* "
 " 3 *Hymenophyllum demissum* Kuhn & Roy
 " 3 " *Alatum* "
 " 3 " *sp* "
 " 3 " *Lyallii* "
 " 3 " *Strubudense* "
 " 3 *Polypodium australe* "
 " 3 " *Grammitidis* "
 " 7 *Linum monocyrum* Penna
 " 7 *Conostichum virginicum* "
 " 7 *Scotepis riparia* "
 " 7 *Archelaetum sibiricum* "
 " 7 *Pentstemon puber* "
 " 15 *Cordylina australis* "
 Nov. 20 *Carex Raoulii* "
 " 20 " *divisa* "
 " 20 " *Lambertiana* "
 " 20 " *lucida* "
 " 25 *Sambucus littoralis* "
 " 25 *Scirpus maritimus* "

Oct 11. Pladium	Purpura
" 11 <i>Asplenium rosifolia</i>	"
" 11 <i>Carex vacillans</i>	"
" 11 <i>Myosotis australis</i>	"
" 15 <i>Medicago maculata</i>	Orakeri
" 15 <i>Plantago lanceolata</i>	"
" 15 <i>Cynsanthes oblonga</i>	"
" 15 <i>Carpophyllum maschalupis</i>	Orakeri
" 15 <i>Sagassum Suetavii</i>	"
" 17 <i>Eutetea arborescens</i>	Purpura
" 17 <i>Alcena sanguinolenta</i>	"
" 26 <i>Thelymitra pulchella</i>	Titinangi
" 26 <i>Myriophyllum pedunculatum</i>	Waldshous R.
" 26 <i>Epilobium Bickardianum</i>	"
" 26 <i>Lepidium</i>	"
" 26 <i>Spergularia rubra</i>	"
" 26 <i>Cotula dioica</i>	"
" 26 <i>Pumila arenaria</i>	"
" 26 <i>Clinisia longifolia</i>	"
" 26 <i>Libertia grandiflora</i>	"
" 26 <i>Veronica maculosa</i>	"
" 26 <i>Juncus prorepens</i>	"

- Dec 5 *Lepidium* n. sp. W. Coast
 " 5 *Cordylus pumilio* "
 " 5 " *Kantzin* "
 " 5 *Agertho amula* var "
 " 5 *Argemone Kalschii* "
 " 5 *Hymenophyllum arizonicum* "
 " 5 " *flabellatum* "
 " 5 *Polypodium framinitidis* "
 " 5 " *australe* "
 " 5 *Agrostophora petiolata* "
 " 5 *Caladenia minor* "
 " 5 *Hymenophyllum pedunculatum* "
 " 9 *Asium leptophyllum* Auckland
 " 9 *Antennaria stratioides* "
 " 9 *Anthemis arvensis* "
 " 14 *Carex densata* Tairāwhiti
 " 14 *Lindaea linearis* "
 " 14 *Halodis alata* "
 " 14 *Trifolium glomeratum* Auckland
 " 14 *Ranunculus repens* "
 " 14 *Colula arvensis* "

Nov 20	<i>Physoodium peruvianum</i>	Peruvia
" 25	<i>Carpodetus serratus</i>	"
Dec. 2	<i>Leptospermum ericoides</i>	"
" 2	<i>Anthropodium tenellum</i>	"
" 3	<i>Carex cataracta</i>	Orebuya
" 3	<i>Glyceria stricta</i>	"
" 3	<i>Agrostis Pellardieri</i>	"
" 3	<i>Mimulus Colusieri</i>	"
" 3	<i>Cotula minor</i>	"
" 5-6	<i>Santatum Cunninghamii</i>	W. Coast
" 5	<i>Pterospermum</i> n. sp.	
" 5	<i>Graphalium Kerrianae</i>	
" 5	<i>Libertia diversiflora</i>	
" 5	<i>Scutella brevifolia</i>	
" 5	<i>Pelinsia longifolia</i>	
" 5	<i>Parallia nova Zelandes</i>	
" 5	<i>Veronica macrocarpa</i>	
" 5	<i>Astelias</i> n. sp.	
" 5	<i>Prothamnium glomeratum</i>	
" 5	<i>Lomaria nigra</i>	
" 5	<i>Swartzia petiolata</i>	

1841.

Jan 3	<i>Asparagus officinalis</i>	Chreewa
" 3	<i>Potentilla anserina</i>	"
" 3	<i>Carex diocita</i>	"
" 3	<i>Dactylis glomerata</i>	"
" 3	<i>Polygonum australe</i>	"
" 3	<i>Spumum australe</i>	"
" 3	<i>Pteris tremula</i>	"
" 3	<i>Saxnaphora Fosteri</i>	"
" 3	<i>Heana nova-Zelandia</i>	"
" 3	<i>Trifolium procumbens</i>	"
" 3	<i>Carduus lanceolatus</i>	"
" 3	<i>Isotepis scabola</i>	"
" 3	<i>Rumex vulgaris</i>	"
" 3	<i>Phleum pratense</i>	"
" 3	<i>Carex Lambertiana</i>	"
" 4	<i>Juncus communis</i>	"
" 5	<i>Convolvulus sepium</i>	"
" 5	<i>Veronica arvensis</i>	"
" 6	<i>Amaranthus</i> —	Auckland.

- Dec 14 *Asyinchin arceps* Puchland
 " 19 *Amuro. conspicua* Puchland
 " 19 *Hibiscus Sioum* "
 " 19 *Cichorium intybus* "
 " 21 *frutosa pendulata* Colly-Lata
 " 21 *Prosera binstata* "
 " 21 *Cassia Forsteri* "
 " 21 *Sachne australis* "
 " 21 *Juncus holoschauno.* "
 " 21. *Epilobium pallidiflorum* "
 " 26 *Phleba australis* Shimamura.

= = = 238 Sp.

Feb. 5.	<i>Boottiansia lanatifolia</i>	Purua
" 7	<i>Phytolacca dicandra</i>	"
" 7	<i>Galium tenneantii</i>	Paromire
" 7	<i>Hydrocotyle nova-Zelandica</i>	P "
" 7	<i>Gratiola</i>	"
" 7	<i>Carex inversa</i>	"
" 10	<i>Aspidium consocum</i>	Stranji Range
" 10	<i>Dendrobium Cunninghamii</i>	"
" 10	<i>Lycopodium Billardieri</i>	"
" 10	<i>Lindsaea trichomanoides</i>	"
" 10	<i>Pratia angulata</i>	"
" 10	<i>Epilobium nummularifolium</i>	"
" 10	<i>Libertia micrantha</i>	"
" 10	<i>Hymenophyllum rarum</i>	"
" 10	" <i>Lyallii</i>	"
" 10	" <i>sp.</i>	"
" 14	<i>Helminthia echioides</i>	Purua
" 14	<i>Pteris aquilina</i>	"
" 15	<i>Cyathea medullaris</i>	"
" 16	<i>Veronica Polycifolia</i>	"
" 16	<i>Saxifraga cuneata</i>	"

Jan 12	<i>Ticksonia squarrosa</i>	Punewa
Jan 20	<i>Ophioglossum vulgatum</i>	Wairarapa
" 20	<i>Glossostigma elatiorides</i>	"
" 20	<i>Sporangium simplex</i>	"
" 25	<i>Loxsonia Cunninghamii</i>	Stokes Point
" 25	<i>Lycopodium densum</i>	"
Feb 1	<i>Lomaria virga</i>	Telusang Range
" 1	<i>Davallia nova-Zelandiae</i>	"
" 1	<i>Hymenophyllum argenteum</i>	"
" 1	<i>Aspidium coriaceum</i>	"
" 1	<i>Cyathea Primitivii</i>	"
" 1	<i>Polypodium angulosum</i>	"
" 1	<i>Draconophyllum latifolium</i>	"
" 1	<i>Dendrobium Cunninghamii</i>	"
" 1	<i>Asca Caprida</i>	"
" 1	<i>Ptiloporum Kirkii</i>	"
" 4	<i>Trechomanes humile</i>	Port Wellington
" 4	<i>Polypodium prostratum</i>	"
" 4	<i>Acrotelia Islandii</i>	"
" 4	<i>Peperomia Urvilleana</i>	"
" 4	<i>Pteris tremula</i>	"

March 6.	<i>Hebe</i> <i>Standleyi</i>	Parewa
" 6	<i>Nephrodium retatum</i>	Orakei
" 8.	<i>Lomaria procusa</i>	Parewa.
" 20	<i>Cyathea dealbata</i>	"
" 21	<i>Inseption Forsteri</i>	"
Apr 12	<i>Polygona</i> ?	Auckland
" "	<i>Adiantum thiopanicum</i>	"
" "	<i>Bidens pilosa</i>	"
" "	<i>Myrsine Urvilleani</i>	"
" "	<i>Polypodium rugulatum</i>	"
Apr 17-22	<i>Veronica Calicifolia</i> (var)	Parewa
	<i>Parsonsia rosea</i>	"
	<i>Canna autumnalis</i>	"
	<i>Melocope Grantii</i>	"
	<i>Artemisia populifolia</i>	"
	<i>Sphora tetraptera</i>	"
	<i>Myrtus bullata</i>	"
	" <i>Ralphii</i>	"
	<i>Dacrydium Cupressum</i>	"
	<i>Podocarpus dacrydioides</i>	"
	" <i>Mara</i>	"

Feb 16	<i>Doodia media</i>	Punua
" 16	<i>Adiantum Cunninghamii</i>	"
" 16	" <i>herp. dehum.</i>	"
" 16	<i>Pteris tremula</i>	"
" 18	<i>Vesum Talicinioides</i>	"
" 22	<i>Clavia Standii</i>	"
Mar 1.	<i>Lomaria filiformis</i>	"
"	" <i>membranacea</i>	"
"	" <i>lanceolata</i>	"
"	<i>Doodia media</i>	"
"	<i>Lycopodium Barbardii</i>	"
"	<i>D. tryphium ecutorium</i>	"
"	<i>Lecodea lucensis</i>	"
"	<i>Adiantum Cunninghamii</i>	"
"	<i>Panicum Sanguinalis</i>	"
"	<i>Datura Stramonium</i>	"
"	<i>Lobelia anceps</i>	"
"	<i>Clavia Standii</i>	"
" 4	<i>Schroea bifida</i>	Hewton
" 4	" <i>festucosa</i>	"
" 6	<i>Panicum Coccini</i>	Punua

- Apr 17. 22 *Lycopodium Canadense* Nova
 " *Saururus Cuscuta* "
 " *Polypodium curvatum* "
 " *Metrodorus florida* "
 " 26. *Pteris Eudlichiensis* Cook's Beach
 May 5 *Hymenophyllum javanicum* Mt. Melong
 " *Chromolaena tenuifolia* "
 " *Asplenium flabellifolium* "
 " *" falcatum* "
 June 5 *Conyza Chusqueana* Peru
 July *Panicum arboreum* "
 " *Piper excelsum* "
 " *Cayroscarpus laevigatus* "
 " *Cotula coronopifolia* "
 " *Veronica agrestis* "
 " *Pellaea rotundifolia* "
 " *Nephrodium decompositum* "
 " *velutinum* "
 " *Pteris macilenta* "
 " *Polypodium penniparum* "
 " *Billardierei* "

Apr
17-22

Olea lanceolata Peria

" *apetala?* "

Pithecolobium auratum "

Keiskea subcapitata var. "

Sapota costata "

Senecio glastipolius "

Tetragonia trigyna "

Potamogeton "

Wahlenbergia gracilis "

Veronica elongata "

Pyrola distans "

Lomana pluvialis "

" *discolor* "

" *tricolor* "

Peperomia hispida "

Pteris ensata "

" *scaberrima* "

Ischaemum uniflorum "

Arpidium Richardii "

Ischaemum elongatum "

- Sept 9 *Ptilosporum crassifolium* Pursh
 " 12 *Apleurium flaccidum* Rt. Rees.
 " 12 *Lycopodium Cernuum* "
 " 13 *Pumila virgata* Pursh
 " 23 *Acaria Cunninghamii* Trautv. & Mey.
 " " *Ptilosporum cornifolium* "
 " " " *Rutii* "
 " " *Mysine solida* "
 " " *Senecio glaucifolius* "
 " " *Melicope macrophylla* "
 " " *Lomaria procera*, var. "
 " " *Santalum Cunninghamii* "
 " " *Alcenosmia macrophylla* "
 " " *Fachonius reniformis* "
 " " " *elongatum* "
 " " *Hymenophyllum Humboldtense* "
 " " *Polypodium Grammatidis* "
 " " *Corysanthes rivularis* "
 Oct 5 *Goniostoma leptophyllum* Pursh
 " 7 *Leptocarpus simplex* "
 " 7 *Drosera auriculata* "

July	<i>Doodia media</i>	Punewa
	<i>Apleurium lucidum</i>	"
	" <i>placidum</i>	"
	<i>Adiantum crispulum</i>	"
	<i>Acrostichum Sinclairii</i>	"
	<i>Pterostylis trullifolia</i>	"
	<i>Coprosma grandifolia</i>	"
Aug.	<i>Doodia comosa</i>	Punewa
"	<i>Procyttia repanda</i>	"
"	<i>Arceuthobium officinale</i>	"
" 19	<i>Ranunculus parviflorus</i>	John Wellington
" 19	<i>Poa umbellata</i>	"
" 19	<i>Apleurium falcatum</i>	"
" 19	<i>Polypodium Cunninghamii</i>	"
" 21	<i>Epacris pauciflora</i>	Seton
" 21	<i>Dracophyllum dimorphanthum</i>	"
" 21	<i>Hymenophyllum demissum</i>	"
Sept 2.	<i>Rubus australis</i>	Punewa
" 2	<i>Vitex litoralis</i>	"
" 2	<i>Clematis indivisa</i>	"
" 5	<i>Freycinetia excoarctata</i>	"
" 5	<i>Rubus australis</i>	"

Oct 28	<i>Eleocharis acuta</i>	College Lake
" "	<i>Cyperus tenuicaulis</i>	"
" "	<i>Nitella</i> 2 sp.	"
Nov 1.	<i>Luzula serrata</i>	St. Lawrence
"	<i>Alopecurus lanifolia</i>	"
"	<i>Cladium Nuttallii</i>	"
"	<i>Aristida racemosa</i>	"
"	<i>Panicum longifolia</i>	"
"	" <i>prostrata</i>	"
"	<i>Rhynchospora scandens</i>	"
"	<i>Myoporum latum</i>	"
"	<i>Lycopodium densum</i>	"
"	<i>Epilobium rotundifolium</i>	"
"	<i>Carex Lambertiana?</i>	"
"	<i>Scheuchzeria palustris</i>	"
"	" <i>terrestris</i>	"
"	" <i>tenuis</i>	"
"	<i>Asplenium grandis</i>	"
"	<i>Glechoma hirsuta</i>	"
5	<i>Euphorbia glauca</i>	Pt. Reservoir
6	<i>Panicum prostrata</i>	"
6	<i>Carex pumila</i>	"

Oct 4	<i>Pseudolytis Brunkei</i>	Punua
" 20	<i>Griselinia lucida</i>	Mt Wellington
" 20	<i>Myoporum laetum</i>	"
" 20	<i>Corynolobus laevigatus</i>	"
" 20	<i>Carex virgata</i>	"
" 20	<i>Gymnogramme leptophylla</i>	"
" 20	<i>Metrosideros diffusa</i>	"
" 20	<i>Wahlenbergia gracilis</i>	"
" 20	<i>Miscotis pomifolia</i>	"
" 20	<i>Silene verticillaris</i>	"
" 20	<i>Myrsophyllum vanafolinum</i>	"
" 20	<i>Dichondra</i>	"
" 20	<i>Arenaria serpyllifolia</i>	"
" 27	<i>Carex lucida</i>	Punua
" 27	<i>Lyzula campestris</i>	"
" 28	<i>Cladium glomeratum</i>	Coleridge Lake
" 28	" <i>articulatum</i>	"
" 28	<i>Arenobolus reddens</i>	"
" 28	<i>Carex Forsteri</i>	"
" 28	<i>Galium tenuicaule</i>	"
" 28	<i>Panicum heterophyllum</i>	"

1841

Nov. 20	<i>Carex lucida</i>	Pulmona
" 20	" <i>Lambertiana</i>	"
" 20	<i>Lepidosperma tetragona</i>	"
" 24	<i>Crotona buddeleoides</i>	Stirrup
" 24	<i>Episcarpus microphyllus</i>	"
" 24	<i>Elaeocarpus dentatus</i>	"
" 24	<i>Nesodaphne Tawia</i>	"
" 24	<i>Astelia</i>	"
" 24	<i>Elatostemma rugosum</i>	"
" 24	<i>Graphium lutescens</i>	"
" 24	<i>Thymus longifolia</i>	"
" 24	<i>Succisa Banksii</i>	"
" 24	"	"
" 24	<i>Gymnocarpium scabrum</i>	"
" 24	" <i>dentatum</i>	"
" 24	" <i>angustum</i>	"
" 24	<i>Trichomanes reniforme</i>	"
" 24	" <i>venosum</i>	"
" 24	<i>Lygodium articulatum</i>	"
" 28	<i>Eleocharis sp. acclata</i>	St John's Lake
" 28	<i>Carex subdola</i>	"

No. 11	<i>Pseudoptone Tricaris</i>	Papakua
" "	" Java	"
" "	<i>Clasarpus dentatus</i>	"
" "	<i>Panicum rosea</i>	"
" "	<i>Aetelia grandis</i>	"
" "	<i>Pyriophyllum robustum</i>	"
" "	<i>Artica incisa</i>	"
" "	<i>Leptopteris hymenophylloides</i>	"
" "	<i>Viola Lyallii</i>	"
" "	<i>Pyrosotis fastuosa</i>	"
" "	<i>Utricularia leptostachya</i>	"
" "	<i>Carex dissecta</i> ?	"
" 13	<i>Carex brevicaulis</i>	Pukawa
" 13	<i>Tribolium stipoides</i>	"
" 13	<i>Ranunculus hirtus</i>	"
" 13	" plebeius	"
" 14	<i>Draba minor</i>	Orakei
" 20	<i>Kniphofia excelsa</i>	Pukawa
" 20	<i>Carmichaelia australis</i>	"
" 20	<i>Sporobolus elongatus</i>	"
" 20	<i>Utricularia australis</i>	"

1842

Feb 1.	<i>Melicopea ciliolata</i> , B	Cady's Lake
Feb. 10 th	<i>Cuscuta Tufolia</i>	Cambidge
"	<i>Novaretha squarrosa</i>	Thompson
"	<i>Quercus emouisea</i>	"
"	<i>Aerostis</i>	Parkidge
Feb 28.	<i>Thyrisma Cervellii</i>	Pinewa
March	<i>Lagenophora lanata</i>	Managers
11-20	<i>Hyemaphysillum polyanthes</i>	"
"	" <i>multifidum</i>	"
"	" <i>Fimbriata</i>	"
"	" <i>saxumicaum</i>	"
"	<i>Ludaya Lepoerin</i>	"
"	<i>Loroxima Cunninghamii</i>	"
"	<i>Marattia Salicida</i>	"
"	<i>Dicksonia lanata</i>	"
"	<i>Achillea millefolium</i>	"
"	<i>Taraxacum esculentum</i>	"
"	<i>Menyanthes Sylvicola</i>	"
"	<i>Alceosmia Bankii</i>	"
"	<i>Plagantus setulosus</i>	"
"	<i>Agultheria antipoda</i>	"
"	<i>Chenopodium ambrosioides</i>	"
"	<i>Sarcobolus adversus</i>	"
"	<i>Psilophyllum peruvianum</i>	"
"	<i>Verbascum glabrum</i>	"
"	<i>Adiantum affine</i>	"
June 2	<i>Dryoxylum spectabile</i>	Pinewa
"	<i>Vitex titioralis</i>	"
"	<i>Parsonsia albiflora</i> (fr.)	"
" 5.	<i>Actaea Bankii</i>	Howick
" 5	<i>Mitrasaccharis florida</i>	"
" 5.	<i>Supia antarctica</i>	"

Nov 28	<i>Dioscorea linearis</i>	St Johns Lake
" "	<i>Ranunculus pisulatis</i>	"
" "	<i>Tanacetum semnanulicoides</i>	"
Dec. 11-16	<i>Meliosadenos robusta</i>	Katataku
"	<i>Alysicarpus</i>	"
"	<i>Pennisetum capillare</i>	"
"	<i>Poa breviflora</i>	"
"	<i>" anceps</i>	"
"	<i>Platanus latifolia</i>	"
"	<i>" graminea</i>	"
"	<i>Pteris Eudlichiensis</i>	"
"	<i>Gahnia sp.</i>	"
"	<i>Epilobium tetragynum</i>	"
"	<i>Mysotis australis</i>	"
"	<i>Pilea prostrata</i>	"
"	<i>Gunnera prorepens</i>	"
"	<i>Carex Kussneri?</i>	"
"	<i>Caladema minor</i>	"
"	<i>Artelia</i>	"
17	<i>Apostemma Githago</i>	Purewa

July 11	<i>Pterostylo hultifolia</i>	Sitka
" "	<i>Nymphaeophyllum polyanthos</i>	"
" 11	" <i>umbelliferae</i>	"
" 11	<i>Polypodium Grammitidis</i>	"
" 5	<i>Corysanthes hirtoba</i>	Puget
" 20	<i>Asplenium bulbiferum</i>	St. Michaels
" 20	<i>Cardamine hirsuta</i>	"
Aug 2	<i>Cyathodes acroca</i>	Rt. Resolution
" 2	<i>Cladobotry</i>	Puget
" 5	<i>Brassica</i>	Puget
" 10	<i>Clavaria indivisa</i>	"
" 10	<i>Alex europaeus</i>	"
" 10	<i>Panicum arborescens</i>	"
" 10	<i>Albisia Sphaerantha</i>	"
" 10	<i>Polypodium Willardii</i>	"
" 12	<i>Narcissus</i>	"
" 12	<i>Viburnum tinus</i>	"
" 16	<i>Solidago viscosa</i>	Puget
" 16	<i>Cypripedium pubescens</i>	"
" 16	<i>Poa imbecille</i>	"
" 16	<i>Cardamine hirsuta</i>	"

1872

- June 5 *Nephrodium crispulum* Howick
 " " *Hymenophyllum flabellatum* "
 " " *Leptopteris hymenophylloides* "
 " " *Gleichenia crenata* "
 " 8 *Lycopodium cernuum* Pitt Rivers
 " 8 *Dicranophyllum squarrosum* "
 " 15 *Astelia Hookeriana* Mt Wellington
 " 15 *Griselinia lucida* (fruit) "
 " 15 *Pteris debilis* "
 " 15 *Asplenium flaccidum* "
 " 15 *Pterostylis multifolia* Purves
 " 15 *Acanthus Rivinii* "
 July 5 *Lomaria membranacea* Purves
 " 5 *Asplenium bulbiferum* "
 " 5 *Coprosma grandifolia* "
 " 11 *Dacrydium cupressinum* Titirangi
 " 11 " *colensoi* "
 " 11 *Astelia trinervis* "
 " 11 *Coprosma spatulata* "
 " 11 *Epacris pauciflora* "
 " 11 *Hakea* "

- Sept 13 *Coprosma robusta* Bot. Wellington
 .. 13 *Ranunculus parviflorus* "
 .. 13 *Clunatis fetida* "
 .. 13 *Melicope ternata* "
 .. 13 *Asplenium lucidum* "
 .. 13 " *bubiferum* "
 .. 13 *Polypodium Cunninghamii* "
 .. 13 *Gymnapanax leptophylla* "
 .. 16 *Pterostylis graminea* Waikowiti
 .. 16 " *puberula* "
 .. 16 *Phyllaglossum Drummondii* "
 .. 16 *Cyrtostylis oblonga* "
 .. 19 *Sophora tetraptera* Purson
 .. 20 *Tetranthus calicaris* "
 .. 20 *Caryocarpus levigatus* "
 .. 20 *Brachyglottis repanda* "
 .. 20 *Asplenium Richardsonii* "
 .. 30 *Alseodromia macrophylla* Sitang
 .. 30 " *binariaefolia* "
 .. 30 *Veronica macrocarpa* "
 .. 30 *Pottosporium cornifolium* "

Aug 16	<i>Hydrocotyle americana</i>	Purewa
" "	<i>Asplenium flabellifolium</i>	"
" 19	<i>Aspidium Richardii</i>	Purewa
" 19	<i>Adiantum affine</i>	"
" 21	<i>Phylloglossum Drummondii</i>	S. Khan
" 21	<i>Leucopogon Fraserii</i>	"
" 21	<i>Rhatidanthus Solandri</i>	"
" 21	<i>Somaria lanceolata</i>	"
" 21	<i>Asplenium Prockermanum</i>	"
" 24	<i>Asplenium bulbiferum</i>	Purewa
" 24	<i>Polypodium fernifolium</i>	"
" 26	<i>Eradium moschatum</i>	"
" 28	<i>Clematis indivisa</i>	"
Sept 2	<i>Alseodermis macrophylla</i>	Tetiaro
" 2	<i>Santalum Cunninghamii</i>	"
" 2	<i>Ischaemum Kempferi</i>	"
" 2	" <i>elongatum</i>	"
" 2	" <i>strictum</i>	"
" 2	<i>Hymenophyllum scabrum</i>	"
" 2	" <i>multifidum</i>	"
" 2	" <i>sp</i>	"
" 2	" <i>timbergenae</i>	"

Nov 15	<i>Ranunculus hirtus</i>	Pearson
" 15	<i>Galoragis depressa</i>	"
" 15	<i>Epilobium rotundifolium</i>	"
" 15	<i>Carex Lambertiana</i>	"
" 15	" <i>Rosulii</i>	"
" 22	<i>Pedicularis arguta</i>	"
" 22	<i>Poa pratensis</i>	"
" 22	<i>Urtica austriaca</i>	"
" 22	<i>Carex Lambertiana</i>	"
" 22	<i>Poa media</i>	"
" 22	<i>Thelypodium longifolium</i>	"
" 22	<i>Promisus mollis</i>	"
" 22	" <i>leucosorus</i>	"
" 22	" <i>sterilis</i>	"
" 22	<i>Pladium arcticatum</i>	Allye Lake
" 22	<i>Epilobium pallidiflorum</i>	"
" 22	<i>Rosa submissa</i>	Pearson
Dec 5-20	<i>Ranunculus muricatus</i> ?	Russell
	<i>Scaberrima coronopus</i>	Morgan
	<i>Polycarpus tetraphyllus</i>	"
	<i>Ptilosporum umbellatum</i>	Russell

Sept 30	Pteris <i>Dumy axillaris</i>	Sitiraga
" 30	<i>Meliccytus macrophyllus</i>	"
" 30	<i>Meyenertia Banksii</i>	"
" 30	<i>Corysanthes rivalaris</i>	"
Oct 5	<i>Dodonaea viscosa</i>	Purewa
" 7	<i>Paspalum divarcatum</i>	"
" 7	<i>Stenotoma leptostachmum</i>	"
" 8	<i>Cerastium vulgatum</i>	"
" 8	<i>Pterostylis Banksii</i>	"
" 26	<i>Entelia arborescens</i>	Garden.
Nov 5	<i>Cordylone australis</i>	Purewa
" 5	<i>Pomadouria phyllifolia</i>	"
" 5	<i>Trachypogon porrifolius</i>	"
" 12	<i>Microris porrifolium</i>	"
" 12	<i>Wolens lanatus</i>	"
" 12	<i>Lepidosperma cheyona</i>	"
" 14	<i>Euphorbia glauca</i>	"
" 15	<i>Kniphofia excelsa</i>	"
" 15	<i>Carpodetus senatus</i>	"
" 15	<i>Microris porrifolia</i>	"
" 15	<i>Thelypodium longifolia</i>	"

Dec 5-20	<i>Chusquea marginata</i>	Monjouis
"	<i>Samolus littoralis</i>	Russell
"	<i>Xeroca desmuffleyi</i>	Monjouis
"	<i>Verbena officinalis</i>	"
"	<i>Cassytha paniculata</i>	"
"	<i>Pinella arenaria</i>	"
"	<i>Chenopodium carinatum</i>	Russell
"	<i>Alternanthera scabris</i>	"
"	<i>Dendrobium Kunyphorum</i>	Monjouis
"	<i>Othoceras Schaudii</i>	"
"	<i>Cadyline ^{Papilionis} indivisa</i>	"
"	<i>Allium</i>	"
"	<i>Sphadnelus frutulosus</i>	"
"	<i>Cyperus</i>	"
"	<i>Ancuma Barbieri</i>	"
"	" <i>leptostachya?</i>	"
"	<i>Carex</i> sp.	"
"	<i>Danthonia homioides?</i>	Russell
"	<i>Festuca?</i> —	Monjouis
"	<i>Glechomia flabellata</i>	"
"	<i>Todea barbara</i>	"

Dec-20	<i>Pterospongia Kirkii</i>	<i>Maurogasteria</i>
"	<i>Opala corniculata</i>	Russell
"	<i>Geranium</i>	Monfrance
"	<i>Pomadouria elliptica</i>	"
"	<i>Lupinus</i>	"
"	<i>Ackama rosifolia</i>	"
"	<i>Rosera epistylata</i>	"
"	<i>Epilobium alsinoides</i>	"
"	<i>Myrtus pedunculata</i>	"
"	<i>Galoragis tetragyna</i>	"
"	<i>Coprasma</i> sp.	"
"	" <i>Panicum</i>	"
"	" <i>shannoides</i>	"
"	<i>Panax Edgerleyi</i>	"
"	<i>Spium leptophyllum</i>	"
"	<i>Passinia leptophylla</i>	"
"	<i>Picus keracioides</i>	"
"	<i>Dracophyllum Uilleamson</i>	"
"	<i>Epacris pauciflora</i>	"
"	<i>Passusia rosea</i>	"
"	<i>Homocia tuberculata</i>	"

15	<i>Cheopodium glaucum</i>	Purusa
" 15	<i>Hydrocotyle dissecta</i>	Stethiole
" 15	<i>Pealis corniculata</i>	"
" 15	<i>Piptocarpha trunum</i>	Purusa
" 18	<i>Pteris macilenta</i>	Deuku Pau
" 18	<i>Aspidium Richardii</i>	"
" 20	<i>Hibiscus populneus</i>	Purusa
" 20	<i>Nicotiana glauca</i>	"
" 24	<i>Solanum Frazeri</i>	Silvany
" 24	" <i>discolor</i>	"
" 24	<i>Hypolepis tenuifolia</i>	"
" 24	<i>Pteris scaberrima</i>	"
" 24	<i>Panicum crassifolium</i>	"
" 24	<i>Solanum aviculare</i>	"
" 24	<i>Eugenia Inaire</i>	"
" 24	<i>Cassia autumnalis</i>	"
" 29	<i>Arceuthobium officinale</i>	Purusa
" 29	<i>Alectryon excelsum</i>	"
" 29	<i>Muhlenbergia appressa</i>	"
" 29	<i>Galium umbrosum</i>	"
" 29	<i>Cyathia dentata</i>	"

— 1843 —

Jan 18	<i>Plena furfuracea</i>	Parewa
" "	<i>Saxnia setifolia</i>	"
" 19	<i>Metrosideros scandens</i>	"
" 20	<i>Paspalum scrobiculatum</i>	"
" 20	<i>Schefflera digitata</i>	"
" 21	<i>Scirpus lacustris</i>	"
" 23	<i>Myrsophyllum pedunculatum</i>	Lake Pupuke
" 23	<i>Euphorbia Lathyris</i>	"
" 23	<i>Mentha Pulegiensis</i>	"
" 23	<i>Polypodium Comellum</i>	"
" 28	<i>Setelia Islandica</i>	Mt Wellington
" 28	<i>Eotula muricata</i>	St Johns Lake
" 28	<i>Mentha</i>	
March 1	<i>Salsola australis</i>	Aohunaru
" 1	<i>Cassinia leptophylla</i>	"
" 7	<i>Myrsine Urvillei</i>	Parewa
" 7	<i>Polygonum aviculare</i>	"
" 7	<i>Lomaria laniculata</i>	"
" 7	<i>Panicum umbelliferum</i>	"
" 8	<i>Melicope ramiflora</i>	"

July 1	<i>Leptospermum incoides</i>	Parewa
"	<i>Lycopersicon esculentum</i>	"
July 3	<i>Nephusellium decompositum</i>	"
"	<i>Asplenium bulbiferum</i>	"
"	<i>Faba major</i>	"
July 5	<i>Asplenium lucidum</i>	Mt Wellington
"	" <i>bulbiferum</i>	"
"	" <i>falcatum</i>	"
"	<i>Polypodium hepaticum</i>	"
"	<i>Poa umbellata</i>	"
"	<i>Succisa scandens</i>	Parewa
"	<i>Oxalis cornuta</i>	"
Sept 26	<i>Fuchsia excoarata</i>	"
"	<i>Corynephorus laevigatus</i>	"
"	<i>Rubus australis</i>	"
"	<i>Brachyglottis repanda</i>	"
Oct 3	<i>Poa annua</i>	"
"	<i>Isoplepis bifaria</i>	"
"	<i>Leptotarpus simplex</i>	"
"	<i>Tetragonia expansa</i>	North Kent
"	<i>Epilobium nummularifolium</i>	"

March 29	<i>Neprodium decussatum</i> , a	Parewa
" 29	<i>Sepidium Richardsonii</i>	"
" 29	<i>Drosera media</i> ?	"
" 29	<i>Polygonum australe</i>	"
April 26	<i>Muhlenbergia complexa</i>	"
" 26	<i>Sepidium Richardsonii</i>	"
" 26	<i>Phytolacca octandra</i>	"
June 13.	<i>Lycopodium volubile</i>	Parewa
" 14	<i>Coriophthos Giesemarii</i>	Waikowiri
" 14	<i>Gleichenia circinata</i>	"
" 14	" <i>Cunninghamii</i>	"
" 14	<i>Lycopodium laterale</i>	"
" 14	<i>Paspopyllum pumilum</i>	"
" 14	<i>Nymphaeophyllum multipidum</i>	"
" 14	<i>Cordylone pumilio</i> (part)	"
" 17	<i>Coriophthos triloba</i>	Parewa
" 19	<i>Panax anomalum</i> .	Waikoa
" 19	<i>Polemonopteron natens</i> .	"
" 19	<i>Phyllostachys tuckermansii</i>	"
" 20	<i>Lomatia filiformis</i>	Parewa
" 20	<i>Coriophthos Giesemarii</i>	"

24	<i>Pterisporum leucophyllum</i>	Liliaceae
" 24	<i>Lantana serotina</i>	"
" 24	<i>Croton cotinifolius</i>	"
" 24	<i>Grapholium venense</i>	"
" 24	<i>Rubus crotchalis</i> , a	"
" 24	<i>Asplenium falcatum</i>	"
" 24	<i>Panax Edgerleyi</i> (Gray)	"
" 24	<i>Gymnocarpium diandra</i>	"
" 24	<i>Hymenophyllum demissum</i>	"
" 24	<i>Polygonum heterophyllum</i>	"
" 31	<i>Brassica oleracea</i>	Cruciferae
" 31	<i>Myoporum laetum</i>	"
" 31	<i>Latex vacciniarius</i>	"
" 31	<i>Aspidium acrostichum</i>	"
" 31	<i>Pteris maculata</i>	"
" 31	<i>Scyphus maritimus</i>	"
" 31	<i>Grapholium lutes-aleum</i>	"
" 31	<i>Fuchsia erecta</i>	"
" 31	<i>Scleranthus biflorus</i>	"
" 31	<i>Epilobium pulchellum</i>	Rubiaceae
" 31	<i>Dichelasma chinense</i>	"

1844	<i>Festuca littoralis</i>	North West
" 4	<i>Laguna opetata</i>	" "
" 17	<i>Melolideros diffusa</i>	Mt Wellington
" 17	<i>Griselinia lucida</i>	"
" 17	<i>Rubus schmideloides</i>	"
" 17	<i>Senecio laetus</i>	"
" 17	<i>Epilobium rubens</i>	"
" 17	<i>Geranium eroble</i>	"
" 17	" <i>diversatum</i>	"
" 17	<i>Azolla rubra</i>	Lake Tekapo
" 18	<i>Melicope simplex</i>	Lake Pupuke
" 18	" <i>ternate</i> Mantellii	" "
" 18	<i>Bedycearya dentata</i>	"
" 18	<i>Podocarpus dactyloides</i>	"
" 18	<i>Ptilosporum leucophorum</i>	"
" 18	<i>Coprosma n. sp</i>	"
" 20	<i>Bartonia vulgaris</i>	Purewa
" 21	<i>Ranunculus acris</i>	"
" 23	<i>Carex lucida</i>	"
" 23	<i>Gnaphalium australe</i>	"
" 24	<i>Polygonum oblongum</i>	Tasman

Nov. 10-15 *Coprosma propinqua* R. & Hemm
" " *avaucata?* "

" *Tanacetum Rachiostemum* "

" *Hesperis Fenninghamii* "

" *Sagenophora petiolata* "

" *Cotula dioica* "

" *Ozothamnus glomeratus* "

" *Ranunculus tenuicaulis* "

" *Gaultheria aurea* var "

" *Dracontophyllum traversii* "

" *Veronica irrigans* "

" *Fragaria fusca* "

" *Dacrydium laciniatum* "

" *Phyllostachys glauca* "

" *Corysanthes oblonga* "

" " *macrantha* "

" *Pterostyles squamata* "

" *Sibbaldia irioides* "

" *Asplenium grandis* "

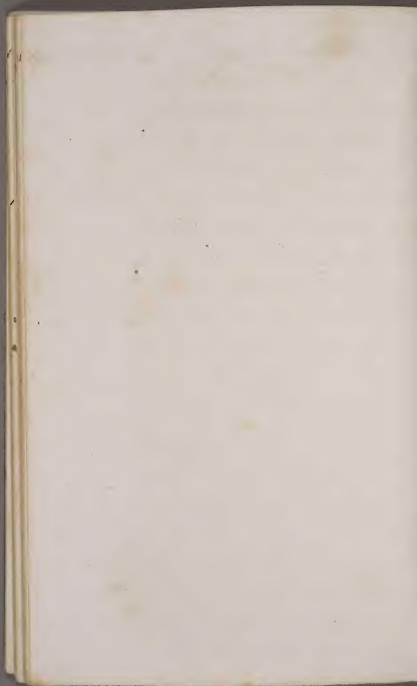
" *Panicum Fosteri* "

" " *lucida* "

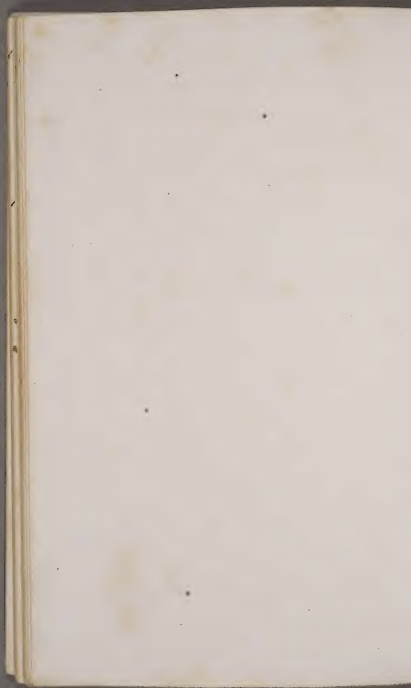
Co. 1.	<i>Carex testacea</i>	Dutchman's
" 1	<i>Ranunculus muricatus</i>	"
" 1	<i>Plantago fronsopus</i>	"
" 1	<i>Cactus.</i>	"
" 1	<i>Mimulus lutescens</i>	"
" 1	<i>Azolla rubra</i>	"
" 1	<i>Selena verticillata</i>	"
" 10-15	<i>Clematis hexasepala</i>	Shamus
" 10-15	<i>Pilosporum Nuttallianum</i>	"
" 10-15	<i>Melioselinus lucida</i>	"
" 10-15	" <i>albiflora</i>	"
" 10-15	<i>Epilobium alpinoides</i>	"
" 10-15	<i>Myriophyllum tetanoides</i>	"
" 10-15	<i>Hydrocotyle</i> sp. ?	"
" 10-15	<i>Panax discolor</i>	"
" 10-15	" <i>arborescens</i>	"
" 10-15	"	"
" 10-15	<i>Groenlandia litorea</i>	"
" 10-15	<i>Coccoloba pedunculata</i>	"
" 10-15	<i>Loranthus decussatus</i>	"
" 10-15	<i>Coprosma lucida</i>	"

Dec 4	<i>Poa australis</i>	St John's
" 4	<i>Juncus vaginatus</i>	"
" 4	" <i>australis</i>	"
" 6	<i>Dactyloctenium aegyptium</i>	Parewa
" 6	<i>Acena nova-Zelandica</i>	"
" 6	<i>Cladonia furcacea</i>	"
" 6	<i>Carex disticha</i>	"
" 6	" <i>sp.</i>	"
" 6	<i>Juncus communis</i> , var	"
" 6	<i>Triticum Scabrum</i>	"
" 6	<i>Erigeron Brownii</i>	"
" 8	<i>Anthropodium cicutarium</i>	"
" 8	<i>Chrysanthemum leucanthemum</i>	"
" 8	<i>Samolus repens</i>	"
" 8	<i>Agrostis Bickardii</i>	"
" 8	<i>Rumex flaccidus</i>	"
" 12	<i>Poa anceps</i>	"
" 12	<i>Dactylis glomerata</i>	"
" 12	<i>Polygonum diversicatum</i>	"
" 12	<i>Juncus pluriflorus</i>	St John's Lake
" 12	" <i>holoschaenus</i>	"

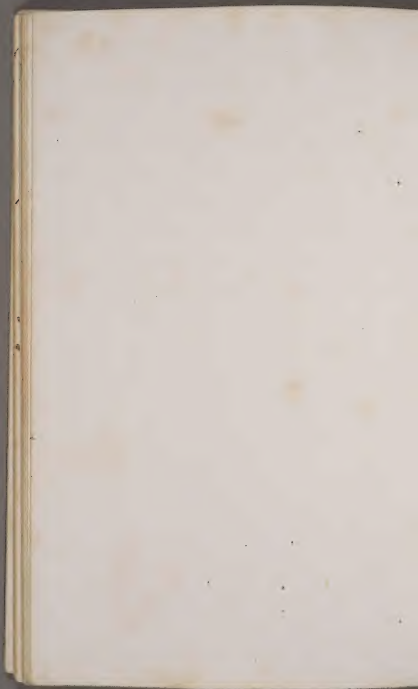
No.	Name	Locality
15	Carex sp.	
"	" Sarcobatus	"
"	Microstachya polynosa	"
"	Glyceria stricta	"
"	Scirpus tuquetii	"
"	Dicellaema lanata	"
"	Hymenophyllum dilatatum	"
"	Eleocharis stricta	"
"	Sonchus oleraceus	"
"	Polypodium aureum	"
"	" grammodes	"
"	" sylvaticum	"
"	" prostratum	"
"	Leptopteris hymenophylloides	"
"	Hymenophyllum bartramii	"
"	Senecio. ———	"
Dec 3.	Carex vagata	Pursera
" 3	Carex vagata, var. secta	"
" 3	Agrostis annua	"
" 3	Panicum semisaccharinum	"
" 4	Carex ———	St. John

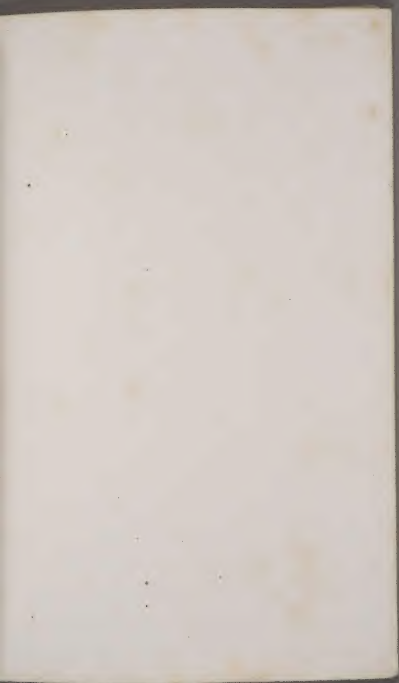


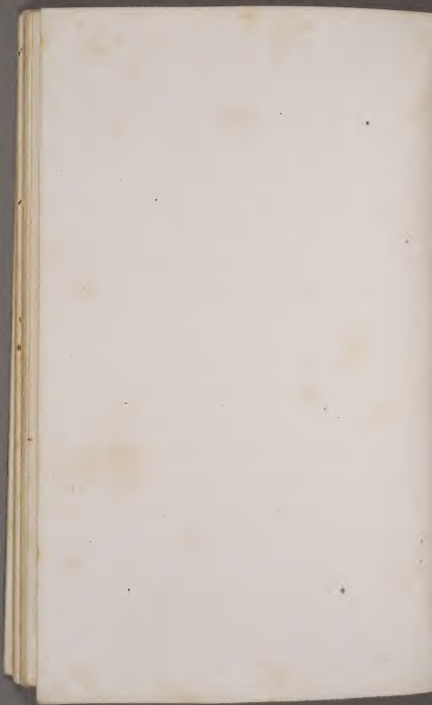
Dec 12	<i>Eleocharis acuta</i>	Stobins Lake
" 12	" <i>gracillima</i>	" "
" 12	<i>Halepis repens proflua</i>	" "
" 12	<i>Sparganium simplex</i>	" "
" 12	<i>Dracopis pinnata</i>	" "
" 12	<i>Scirpus acutatus</i>	" "
" 12	<i>Epilobium pallidiflorum</i>	" "
" 12	<i>Hydrocotyle nova-Zelandica</i>	" "
" 12	<i>Habenaria microantha</i>	" "
" 16	<i>Larix Raoulii</i>	Pukewari



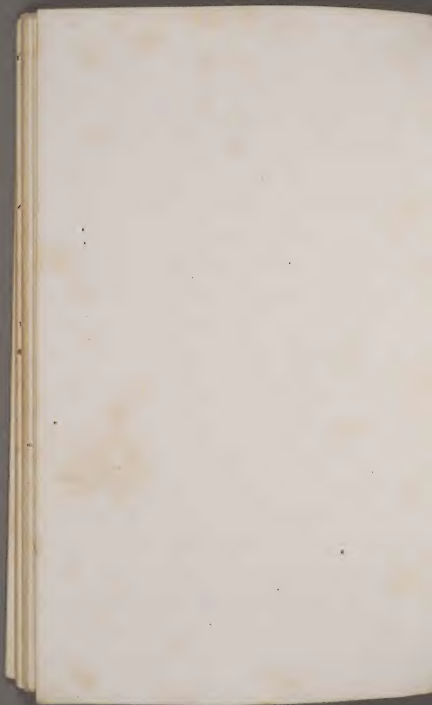




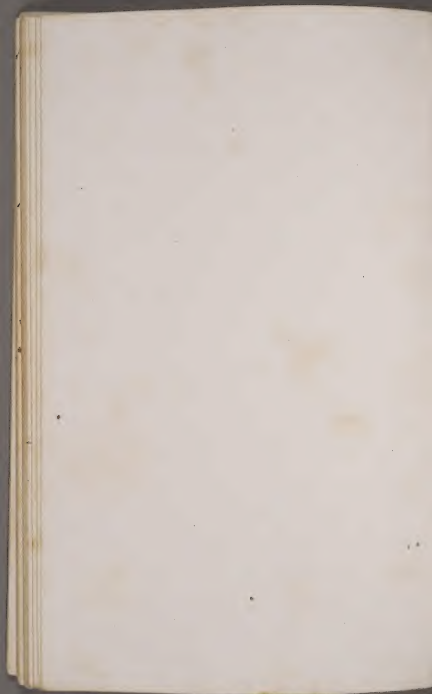


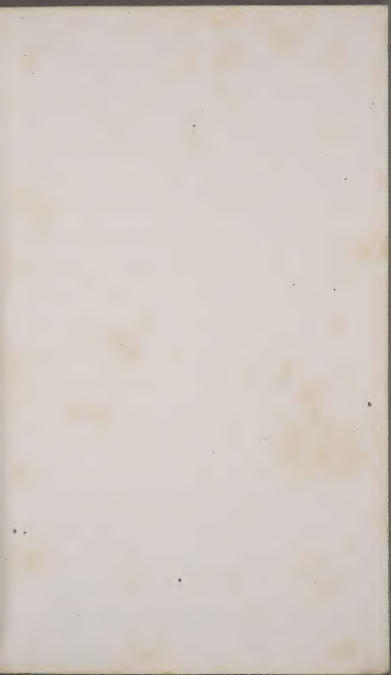




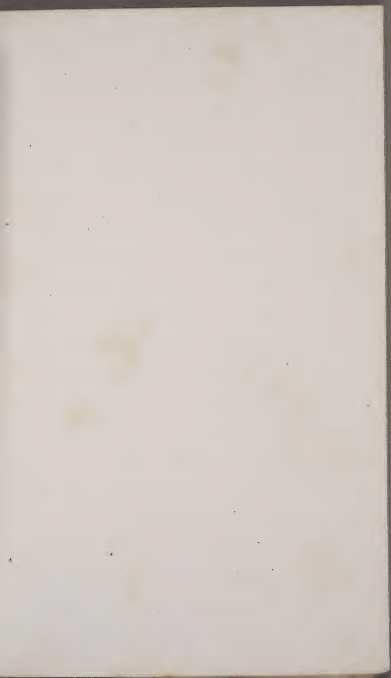


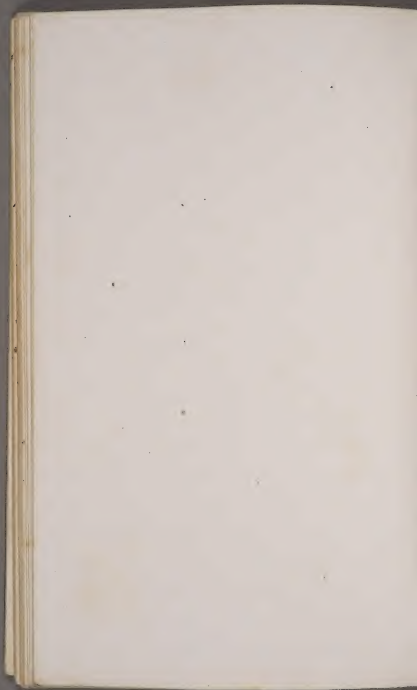


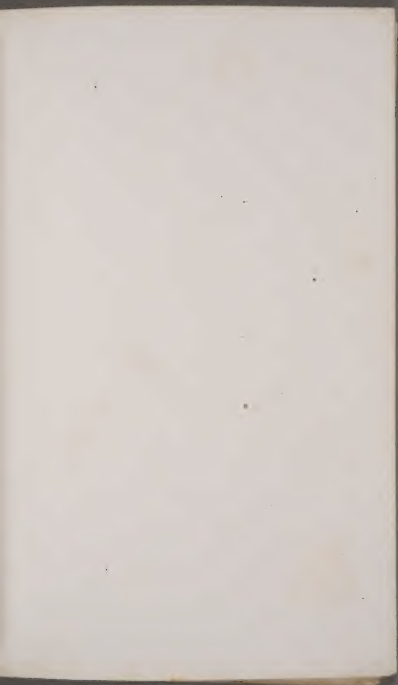


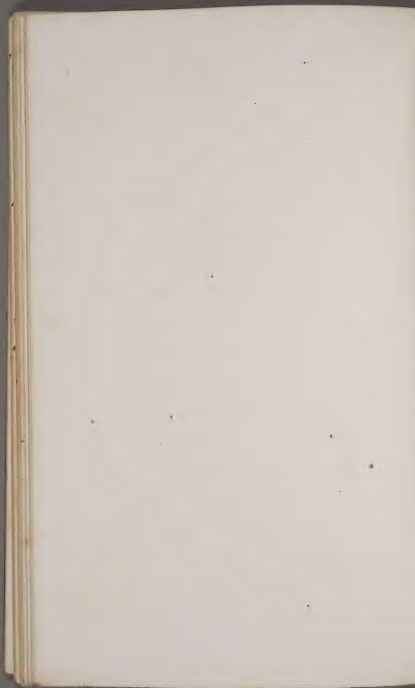


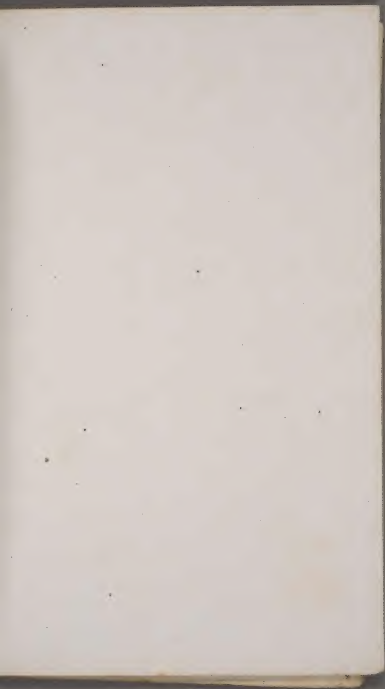


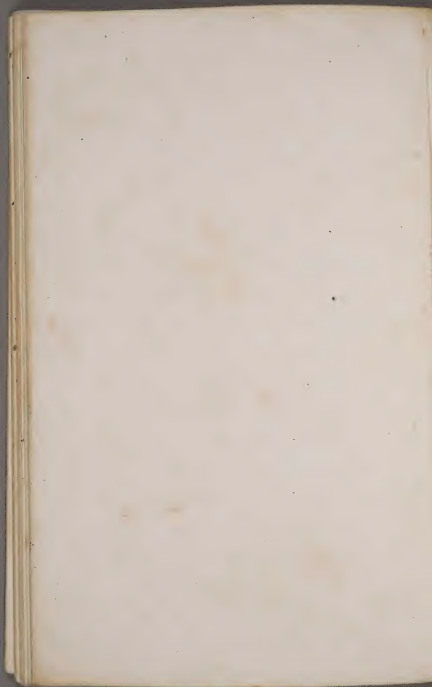


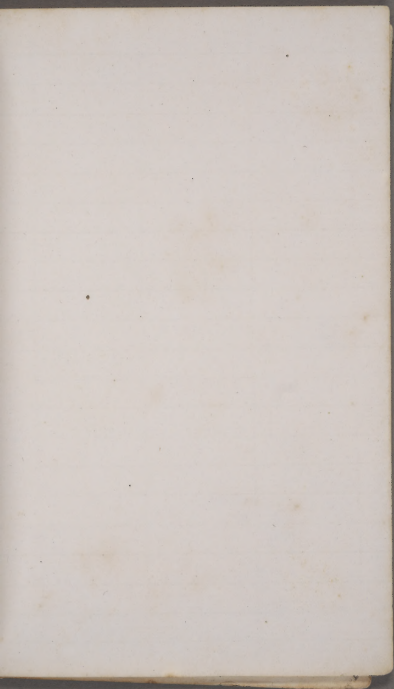


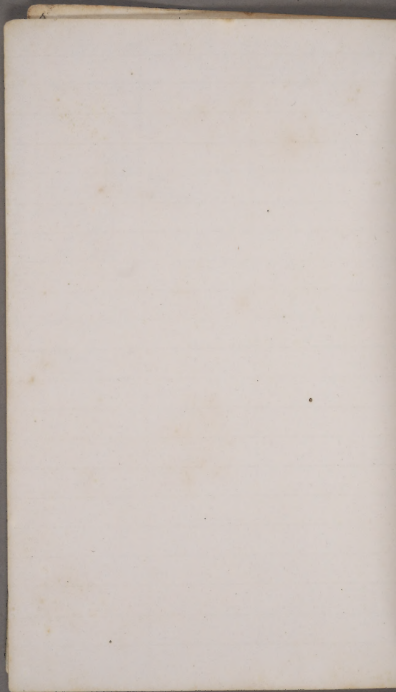












62
 46

 23

July 18
 " 21
 " 25
 " 26

" 28

" 20
 " 19
 May 10
 May 9
 May 8
 May 7

Sept 2 (2)

711

