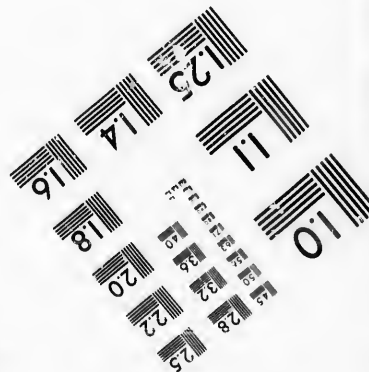
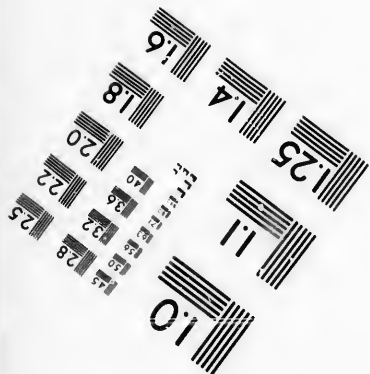
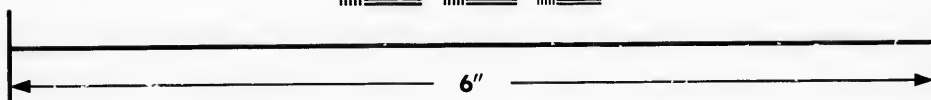
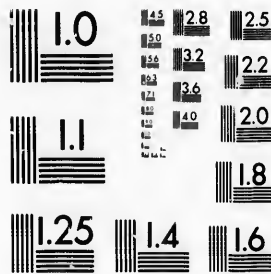


**IMAGE EVALUATION  
TEST TARGET (MT-3)**



**Photographic  
Sciences  
Corporation**

23 WEST MAIN STREET  
WEBSTER, N.Y. 14580  
(716) 872-4503

15  
18  
22  
25  
28  
32  
36  
40  
45  
50  
55  
60  
65  
70  
75  
80  
85  
90  
95  
100

**CIHM/ICMH  
Microfiche  
Series.**

**CIHM/ICMH  
Collection de  
microfiches.**



Canadian Institute for Historical Microreproductions / Institut canadien de microreproductions historiques

10  
15  
20  
25  
30  
35  
40  
45  
50  
55  
60  
65  
70  
75  
80  
85  
90  
95  
100

**© 1987**

Technical and Bibliographic Notes/Notes techniques et bibliographiques

The Institute has attempted to obtain the best original copy available for filming. Features of this copy which may be bibliographically unique, which may alter any of the images in the reproduction, or which may significantly change the usual method of filming, are checked below.

L'Institut a microfilmé le meilleur exemplaire qu'il lui a été possible de se procurer. Les détails de cet exemplaire qui sont peut-être uniques du point de vue bibliographique, qui peuvent modifier une image reproduite, ou qui peuvent exiger une modification dans la méthode normale de filmage sont indiqués ci-dessous.

- |   |   |
|---|---|
| <input type="checkbox"/> Coloured covers/<br>Couverture de couleur  | <input type="checkbox"/> Coloured pages/<br>Pages de couleur  |
| <input type="checkbox"/> Covers damaged/<br>Couverture endommagée   | <input checked="" type="checkbox"/> Pages damaged/<br>Pages endommagées   |
| <input type="checkbox"/> Covers restored and/or laminated/<br>Couverture restaurée et/ou pelliculée   | <input type="checkbox"/> Pages restored and/or laminated/<br>Pages restaurées et/ou pelliculées   |
| <input type="checkbox"/> Cover title missing/<br>Le titre de couverture manque  | <input checked="" type="checkbox"/> Pages discoloured, stained or foxed/<br>Pages décolorées, tachetées ou piquées  |
| <input type="checkbox"/> Coloured maps/<br>Cartes géographiques en couleur  | <input type="checkbox"/> Pages detached/<br>Pages détachées   |
| <input type="checkbox"/> Coloured ink (i.e. other than blue or black)/<br>Encre de couleur (i.e. autre que bleue ou noire)  | <input checked="" type="checkbox"/> Showthrough/<br>Transparence  |
| <input type="checkbox"/> Coloured plates and/or illustrations/<br>Planches et/ou illustrations en couleur   | <input type="checkbox"/> Quality of print varies/<br>Qualité inégale de l'impression  |
| <input type="checkbox"/> Bound with other material/<br>Relié avec d'autres documents  | <input type="checkbox"/> Includes supplementary material/<br>Comprend du matériel supplémentaire  |
| <input type="checkbox"/> Tight binding may cause shadows or distortion along interior margin/<br>La reliure serrée peut causer de l'ombre ou de la distorsion le long de la marge intérieure  | <input type="checkbox"/> Only edition available/<br>Seule édition disponible  |
| <input type="checkbox"/> Blank leaves added during restoration may appear within the text. Whenever possible, these have been omitted from filming/<br>Il se peut que certaines pages blanches ajoutées lors d'une restauration apparaissent dans le texte, mais, lorsque cela était possible, ces pages n'ont pas été filmées. | <input type="checkbox"/> Pages wholly or partially obscured by errata slips, tissues, etc., have been refilmed to ensure the best possible image/<br>Les pages totalement ou partiellement obscurcies par un feuillet d'errata, une pelure, etc., ont été filmées à nouveau de façon à obtenir la meilleure image possible. |
| <input type="checkbox"/> Additional comments:<br>Commentaires supplémentaires:  |   |

This item is filmed at the reduction ratio checked below/  
Ce document est filmé au taux de réduction indiqué ci-dessous.

10X	14X	18X	22X	26X	30X
<input type="checkbox"/>	<input type="checkbox"/>	<input type="checkbox"/>	<input checked="" type="checkbox"/>	<input type="checkbox"/>	<input type="checkbox"/>
12X	16X	20X	24X	28X	32X

The copy filmed here has been reproduced thanks to the generosity of:

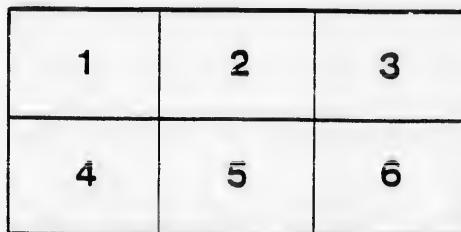
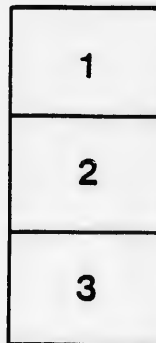
Library,  
Geological Survey of Canada

The images appearing here are the best quality possible considering the condition and legibility of the original copy and in keeping with the filming contract specifications.

Original copies in printed paper covers are filmed beginning with the front cover and ending on the last page with a printed or illustrated impression, or the back cover when appropriate. All other original copies are filmed beginning on the first page with a printed or illustrated impression, and ending on the last page with a printed or illustrated impression.

The last recorded frame on each microfiche shall contain the symbol  $\rightarrow$  (meaning "CONTINUED"), or the symbol  $\nabla$  (meaning "END"), whichever applies.

Maps, plates, charts, etc., may be filmed at different reduction ratios. Those too large to be entirely included in one exposure are filmed beginning in the upper left hand corner, left to right and top to bottom, as many frames as required. The following diagrams illustrate the method:



L'exemplaire filmé fut reproduit grâce à la générosité de:

Bibliothèque,  
Commission Géologique du Canada

Les images suivantes ont été reproduites avec le plus grand soin, compte tenu de la condition et de la netteté de l'exemplaire filmé, et en conformité avec les conditions du contrat de filmage.

Les exemplaires originaux dont la couverture en papier est imprimée sont filmés en commençant par le premier plat et en terminant soit par la dernière page qui comporte une empreinte d'impression ou d'illustration, soit par le second plat, selon le cas. Tous les autres exemplaires originaux sont filmés en commençant par la première page qui comporte une empreinte d'impression ou d'illustration et en terminant par la dernière page qui comporte une telle empreinte.

Un des symboles suivants apparaîtra sur la dernière image de chaque microfiche, selon le cas: le symbole  $\rightarrow$  signifie "A SUIVRE", le symbole  $\nabla$  signifie "FIN".

Les cartes, planches, tableaux, etc., peuvent être filmés à des taux de réduction différents. Lorsque le document est trop grand pour être reproduit en un seul cliché, il est filmé à partir de l'angle supérieur gauche, de gauche à droite, et de haut en bas, en prenant le nombre d'images nécessaire. Les diagrammes suivants illustrent la méthode.

[From the REPORT OF THE

FOR THE ADVANCEMENT

2. Logan with  
letter had regard.

ON  
SOME ADDITIONS TO THE GEOLOGY  
OF  
THE ARCTIC REGIONS.

By J. W. SALTER, F.G.S., A.L.S.

PROPERTY OF LIBRARY  
GEOLOGICAL SURVEY OF CANADA  
601 Booth St. Ottawa  
LENT TO 2. J. W. Salter  
DATE 1874  
PLEASE RETURN

[In an accompanying map were exhibited the discoveries lately made in Arctic geology, and an attempt made to show at one view all that is now known on the subject.]

In a communication to the Geological Society, in 1853, I had the honour to demonstrate the existence of a wide-spread Upper Silurian formation in the lands which border the Polar basin in North America.

The fact, mentioned both by Conybeare and Jameson, of the chain coral being found in the limestones of Barrow's Strait, would be, in the present state of our knowledge, a sufficient proof of the existence of Silurian strata there. But it required the extensive collections made by the expedition under Capt. Austen along that strait, and those made by Penny and his comrades up Wellington Channel, to enable us to decipher the meaning of the old lists of fossils, and to show that an uniform horizon of *Upper Silurian* limestone stretched from near the entrance of Barrow's Straits to Melville Island northwards as far as those expeditions reached, and evidently very far to the south along Prince Regent's Inlet. These collections, brought home by the officers and medical gentlemen from various points, showed so many fossils referable to the same types as our own Dudley limestone, and so entire an absence of characteristic Lower Silurian ones, that there need be no hesitation in referring the whole of the limestones, in a general way, to the Wenlock group.

The common fossils are *Rhynchonella Phoca*, *Orthoceras* and *Murchisonia*; and there are several species identical with European ones; e. g. *Pentamerus conchidium*; a trilobite (*Encrinurus levis*); the chain-coral; *Favosites*, *polymorpha*, &c. The type of the numerous corals is, however, rather American than European, *Favistella* and *Columnaria* being present,—the former abundant.

The limitation of these strata to the Upper Silurian period is an independent confirmation of the inference drawn by our able friend Mr. Logan as to the age of the lowest rocks he was able to find north of the great Laurentine chain. These strata, which were certainly shore accumulations, contained in plenty the fossils of the Clinton group (*Pentamerus oblongus*, *Atrypa hemispherica*, &c., with large species of *Orthoceras*, known in North America as Upper Silurian forms). Similar species of *Orthoceras* were found far to the west in lat. 62° by Sir John Richardson,

LIBRARY  
GEOLOGICAL SURVEY



have a Devonian aspect, and small *Producti* are associated in it with *Atrypa reticularis*, which species is never found in carboniferous rocks.

If this indication be accepted (and I think it a good one), that the Devonian system is here interposed between the Silurian plateau and the Carboniferous rocks, it would be satisfactory; and it is worth while to remember here, that in the easterly trend of these rocks Dr. Sutherland discovered a considerable formation of stratified sandstones along the north-eastern end of Baffin's Bay. I have provisionally given them the same colour. But nothing is known of the intervening ground.

The terminal member of the Palæozoic series, the Permian, is not yet traced in Polar America. But in Spitzbergen it has long been known, and we are indebted to Prof. De Koninck for a valuable list, chiefly European species, from thence. The *Productus horridus* and *P. cancrini*, *Spirifer alatus* and *S. cristatus*, are too well known to need any comment. They were collected at Bell Sound by M. Robert, in a latitude as high as that of Albert Land.

And now we come to the most interesting part of the Geology of the Arctic Basin, for I must be permitted, with the evidences before cited of an ascending section northwards, to call it so.

The reddish limestone forming the cap of Exmouth Island before referred to, is clearly, from its fossils, of carboniferous date. But in building the cairn on the summit, the fragments of limestone were carefully examined, and some of them at least contained bones of Vertebrata, which, under Prof. Owen's examination, have turned out to be *Ichthyosaurus*! Sir Edward Belcher assures me there was no perceptible difference between the fragments with bones and those with the Carboniferous shells above quoted. Yet this similarity of composition need not prevent our inferring that on this summit we have an outlying patch of Oolitic or Liassic rocks brought into close contact with the old limestone.

And as confirming the idea of the fossils being here *in situ*, and not drifted masses, Capt. M'Clintock had the good fortune to discover oolitic or lias fossils, *Ammonites*, *Spirifers*, *Pecten*, &c. in Prince Patrick's Land, lat.  $76^{\circ} 30'$ , long.  $117^{\circ}$ . These are quoted in the Royal Dublin Society's Journal for Nov. 1854. By referring to the map, it will be seen that the trend from this point to Exmouth Island follows nearly the direction E. by N. which the Carboniferous formation takes in its range from Melville Island to Albert Land. Science is greatly indebted to both these gallant officers for their exertions.

In the Dublin Journal above quoted are some excellent observations by Dr. Scouler on the Tertiary (miocene probably) flora of W. Greenland; but these do not come within the object of this communication. It is worth while, in conclusion, to observe, that elevation of the land has taken place since the period of the (drift?), for Arctic snells imbedded in it were found by the former expedition as far as 500 feet above the sea-level, and Capt. Belcher has found bones of large Vertebrata (whales?) at even greater elevations.

