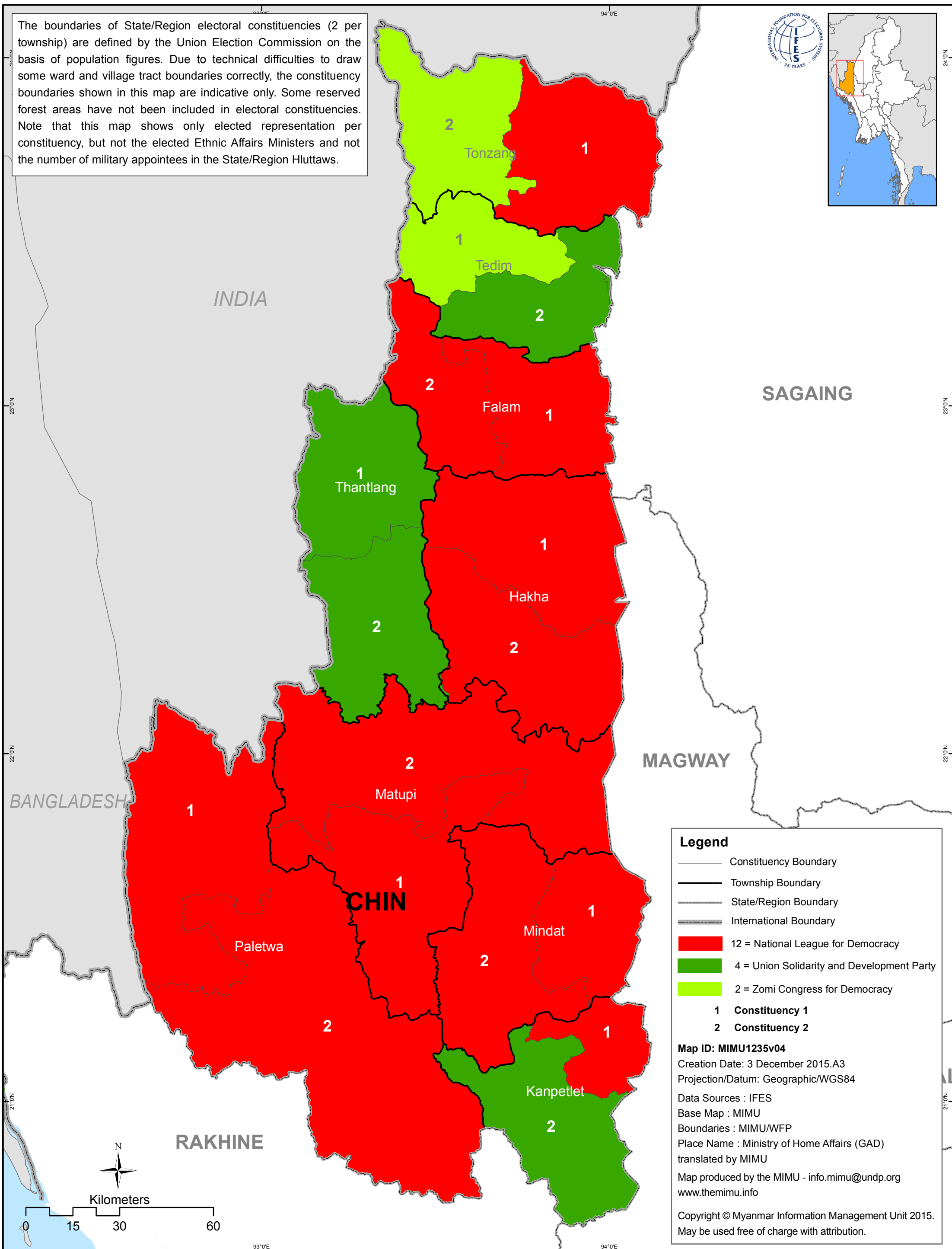
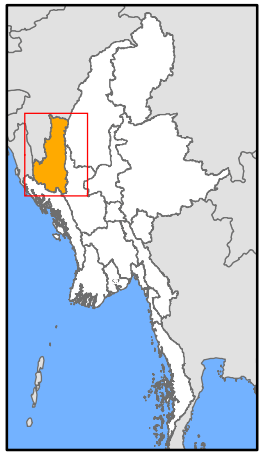


Election Results 2015

Chin State Hluttaw

The boundaries of State/Region electoral constituencies (2 per township) are defined by the Union Election Commission on the basis of population figures. Due to technical difficulties to draw some ward and village tract boundaries correctly, the constituency boundaries shown in this map are indicative only. Some reserved forest areas have not been included in electoral constituencies. Note that this map shows only elected representation per constituency, but not the elected Ethnic Affairs Ministers and not the number of military appointees in the State/Region Hluttaws.



Legend

- Constituency Boundary
- Township Boundary
- State/Region Boundary
- International Boundary
- 12 = National League for Democracy
- 4 = Union Solidarity and Development Party
- 2 = Zomi Congress for Democracy
- 1 Constituency 1
- 2 Constituency 2

Map ID: MIMU1235v04
 Creation Date: 3 December 2015.A3
 Projection/Datum: Geographic/WGS84
 Data Sources : IFES
 Base Map : MIMU
 Boundaries : MIMU/WFP
 Place Name : Ministry of Home Affairs (GAD) translated by MIMU
 Map produced by the MIMU - info.mimu@undp.org
 www.themimu.info

Copyright © Myanmar Information Management Unit 2015.
 May be used free of charge with attribution.

Disclaimer: The names shown and the boundaries used on this map do not imply official endorsement or acceptance by the United Nations.