

Historic, Archive Document

Do not assume content reflects current scientific knowledge, policies, or practices.

62.51

LIBRARY
BOSTON
JAN 24 1927

1873-1926

Annual Catalogue from
STERLING'S
SEED and PLANT FARM



PREMIER; *Our Best Kind*

RALPH W. STERLING
CUTCHOGUE, L. I. NEW YORK
SUFFOLK COUNTY

Telephone Peconic 55

D. M. Rheem

Sterling's Annual Catalog

TO MY FRIENDS AND CUSTOMERS:—

Please accept this, my Annual Catalog for 1926, with my very best wishes for a Happy and Prosperous New Year.

In many respects last year was one of the best years that we have had in many a long day, especially for the potato farmers. Many lines of Truck Crops were disappointing, however. And that is why I wish to say one word here as to plantings for 1926 markets.

Looking back over past years it seems to me that, as a rule, not always, of course, the crops that paid the poorest one year, pay the best the following year. So just because Lima Beans did not pay last year don't give them up entirely this year, and just because potatoes paid so well last year is no reason to plant every acre of your farm in potatoes this year.

Early Peas have paid pretty well for several years. I have a very fine stock of the three best kinds to plant—Gradus and Thomas Laxton for tall vines and large pods, and Laxtonian for shorter vines, but nearly as large pods as the others. The price is right as Pea Seed is very scarce this year in a wholesale way, especially Laxtonian.

My Fordhooks are also priced right and of the usual fine quality as I have always put out from my regular growers. Order your Limas early and get the right price for 1927.

Sterling Strain Brussels Sprout Seed has made good with the farmers this year. Although the two rows in the test at Orient did not show up very good the acres and acres in the fields of the farmers gave good results as you can see by reading the testimonials. Have a large quantity of seed from crop of 1925 grown from extra fine stock carefully selected by my regular grower and inspected by myself. This seed will be treated with the Hot Water Treatment the same as last year and should give even better results than last year's stock.

Corinna Farm Seed Potatoes also made a poor showing in the test and still gave wonderful satisfaction with the farmers. I could not get enough of the seed last Fall to go around among all my satisfied customers. But I did secure a fine lot of Wisconsin Seed and have a good lot of it stored ready for Spring demand. Put your orders in early and make sure of getting some good Certified Seed.

All my Cobbler Seed that I have stored is sold, but I have a carload coming from Vermont in the Spring of very choice seed. If the Vermont farmer from whom I purchased this seed can be depended on, and I think he can, this seed will be here in time to plant.

I hope that you will all read this catalog over carefully, compare my prices and the quality of my Seeds, Plants, Insecticides, etc. with others, taking into consideration our efforts to please, prompt attention to your orders and readiness to adjust all complaints. Then make out your order and send it along, the earlier the better. If you get it off before April 1st we will put in from one to five trial packets of seeds that are worth trying.

Thanking you all for the business that you gave me in the past and with best wishes for your success in 1926, I beg to remain

Yours very sincerely,

RALPH W. STERLING.

P. S. Please show this catalog to your friends and neighbors and if you need an extra copy or so, let me know, or I will be pleased to receive their names.

N. B. No business transacted on Sunday.



SEED DEPARTMENT

By carefully reading and observing the following directions, mistakes will be largely avoided.

Write your name, address and shipping directions plainly.

Always send the cash with your order, unless otherwise agreed upon. Money may be sent by P. O. Money Order, Bank Draft or Registered Letter. Stamps may be sent for amounts under \$1.00. but be sure to put in two-cent stamps, wrapped in waxed paper.

We pay the postage on all seeds sold by the pkt., oz., and $\frac{1}{4}$ lb. Quantities over that are priced net, to be shipped by parcel post, freight or express, at purchaser's expense, unless otherwise stated.

If you desire your seed sent by Parcel Post, add 7c for the first lb. and 1c for each additional lb. of your order, allowing 2 lbs. extra for package. For amount of postage on plants see Plant Department.

$\frac{1}{2}$ lbs. will be sold at lb. rates; $\frac{1}{2}$ bu. at bushel rates.

No charge is made for packing or packages, except in selling Grass Seed, Peas, Beans, etc. in bulk. Then a charge of 45c each has to be made for the 2 bushel seamless bags. These may be returned if in good condition, charges prepaid and the amount will be credited to your account.

Remember, we sell Burpee's Seeds for less money than you can purchase them elsewhere. Burpee's Seeds are renowned for their purity and quality. We have been handling Burpee's Seeds for a number of years and know that they are quite dependable and trustworthy, more so than any other grower's that we have been able to find. Where we do find seeds of merit we carry a full stock of them. Such are the following:

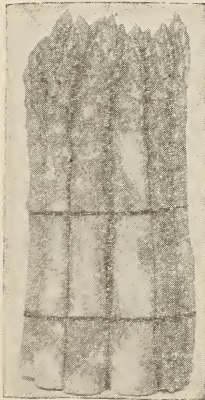
Fordhook Bush Lima Beans, Black Valentine, Bountiful and Burpee Stringless Green Pod Beans, Gradus, Thomas Laxton and Lax-

tonian Peas, and different kinds of Wax Beans and Sweet Corn from Connecticut and Pennsylvania, Bender's Surprise Musk Melon, Early Wonder Beet, Clark Special, Stay Green, Woodruff's Hybrid, and Chicago Pickling Cucumber, Clark Special and Livingston's Selected Strains of Tomato, Dreer's Special Strains of Beet, Extra Early Sweet Corn and French Grown Lettuce Seed, Dreer's Special Flower Seeds and Plants, Mary Washington and Washington Asparagus Seed and Roots, Kroemer's Large Early Erfurt Cauliflower Seed, Sterling Strain Brussels Sprout Seed, Japanese, Yellow, White and Red Onion Sets, Globe Brand Grass, Clover and Alfalfa Seed, Seed Oats and Seed Rye, Northern Grown, Leap's Prolific Seed Wheat, and many other items that you will find by reading this catalog carefully.

Please inform us promptly on the arrival of your order if there is anything unsatisfactory or otherwise than as expected. We aim to make our customers loyal and true friends. But we are only human and once in a great while error creeps in. When it does we are only too glad to rectify same. Where possible use the enclosed order sheet and self-addressed envelope.

Order by name and number both if not in too much of a hurry. Always read your order over carefully before sending and be sure your name and address is on your order. Make a copy of the order so you can check up on receipt of goods.

SPECIAL NOTICE—In filling all orders for Garden Seeds before April 1st, I will put in from one to five sample packages, depending on the size of your order. If you find any of these samples of merit, I would be glad to hear of it.



*Mary Washington
Asparagus*

ASPARAGUS SEED

MARY WASHINGTON. The originator of this strain, Professor J. B. Norton, in his latest bulletin on Asparagus, says: "An ideal strain which the writer considers good enough to mark the culmination of his Asparagus Breeding work, at least for the present. The largest, most prolific and highest grade Asparagus known to the trade. Mary is so good you can see the difference."

The seed we offer is from the grandchildren of the best Asparagus plants in America, "Mary" and "Washington" now growing on the old Custis farm at Arlington, Va. The seed comes from carefully selected roots and is the best stock available anywhere for seed purposes.

MARY WASHINGTON. (Re-selected) Pedigreed Seed. This is the largest seed of uniform size, making the best roots. You cannot find better seed than this anywhere. Bred from Prof. Norton's original stock. Pkt. 30c, 1 oz. 50c, ¼ lb. \$1.75, ½ lb. \$3.25, lb. \$5.50, 5 lbs. \$5.00 per lb. Postpaid.

MARY WASHINGTON. Pedigreed Seed. This is the same seed as above only not quite so large a run of seed. Prof. Norton claims the larger the seed the larger the roots. Pkt. 15c, 1 oz. 25c, ¼ lb. 90c, ½ lb. \$1.70, 1 lb. \$2.90, 5 lbs. at \$2.75 per lb. Postpaid.

We have over 100,000 fine roots to offer this Spring of the kinds listed above in one-year-old roots and the Martha Washington and Washington in two-year-old roots.

See pages 46, 47 for prices on Asparagus Roots.

BUSH BEANS—GREEN POD

2 lbs. make 1 qt. 1 lb. will plant 100 ft. of drill.

1 bu. will plant 1 acre in hills.

No.		Pkt.	Lb.	2 Lbs.	10 Lbs.	Bu.
10	BURPEE STRINGLESS GREEN POD. The most popular and best green pod bean. It stays tender the longest, is absolutely stringless and of high quality. Very productive, early, pods round	\$.10	\$.35	\$.65	\$3.00	\$14.00
	BURPEE STRINGLESS GREEN POD. From Conn.10	.30	.50	2.30	12.00
22	FORDHOOK FAVORITE. A white seeded Burpee Stringless. Fine....	.15	.40	.75	3.50	
13	BOUNTIFUL. Early, prolific and one of the best for market.....	.10	.35	.65	3.00	13.00
	BOUNTIFUL. From Penn. Fine stock10	.30	.50	2.25	11.00
14	RED VALENTINE. Extra early, Burpee's round podded strain10	.30	.55	2.60	13.00
15	BLACK VALENTINE. Very early, round, straight pods. One of the best for market. Comes quick....	.10	.30	.55	2.60	
	BLACK VALENTINE. Landreth..	.10	.30	.50	2.10	10.00
	BLACK VALENTINE. New Stringless Strain. Extra fine for market. From Conn.10	.30	.50	2.30	12.00
19	LATE REFUGEE or 1000 to 1....	.10	.30	.55	2.70	13.00
20	KEENEY'S STRINGLESS REFUGEE. Early, prolific, brittle and tender. Absolutely stringless10	.35	.65	2.90	14.00
23	GIANT STRINGLESS GREEN POD. Late and large10	.35	.65	3.00	14.00

26	DWARF HORTICULTURAL. Best for shelling and succotash. Pods are streaked with red when ready to ship. Stringless10	.30	.55	2.70	13.00
	FRENCH HORTICULTURAL. An improved Dwarf. Highly colored pods and very prolific. Landreth10	.35	.65		
25	NEW ROBUST PEA. Smallest for baking10	.30	.50	2.00	
29	WHITE MARROWFAT. Medium sized, for baking10	.30	.55	2.50	
28	RED KIDNEY. Very rich10	.30	.55	2.40	
	WHITE KIDNEY. Large. From New York State10	.30	.50	2.00	

All the above prices by the lb. are net, postage extra. See page 3 as to postal rates. Pkts. are postpaid.

BUSH BEANS—WAX POD

No.		Pkt.	Lb.	2 Lbs.	10 Lbs.	Bu.
33	BURPEE'S BRITTLE WAX. The finest of all wax beans. Stringless and tender, pencil pod	\$.15	\$.40	\$.75	\$ 3.40	\$ 16.00
	BRITTLE WAX from Conn.10	.35	.65	3.00	15.00
41	RUST PROOF GOLDEN WAX. Flat pods, tender, stringless; very prolific10	.30	.55	2.70	13.00
	RUST PROOF GOLDEN WAX. from Landreth10	.30	.50	2.30	12.00
	CURRIE'S RUST PROOF WAX. Extra early, flat pods. Black seed. One of the best for market10	.30	.50	2.30	11.50
44	BURPEE'S KIDNEY WAX. Free from any diseases; very prolific; flat pods; high quality15	.40	.75	3.40	
50	BURPEE'S SADDLEBACK WAX. Tender, stringless, with very fleshy pods. Black seed10	.35	.65	3.00	
55	BURPEE'S STRINGLESS WHITE WAX. Pods are flat, stringless, of fine flavor and remain tender longer than any other kind. Beans are white and can be used for winter baking15	.40	.75		
49	SURECROP STRINGLESS WAX. One of the best. Black seed10	.35	.60	2.70	

All the above prices by the lb. are net, postage extra. See page 3 as to postal rates. Pkts. are postpaid.

POLE BEANS—GREEN PODDED

1 Lb. will plant 100 poles.

No.		Pkt.	Lb.	² Lbs.	¹⁰ Lbs.
72	KENTUCKY WONDER or OLD HOME-STEAD. Long, tender, stringless.....	\$.10	\$.30	\$.55	\$2.60
83	HORTICULTURAL or POLE CRAN-BERRY. Very fine for green or shell beans10	.30	.55	2.70
73	BURGER'S GREEN POD STRINGLESS. White seeded10	.30	.55	2.60

POLE-LIMA BEANS

1 Lb. will plant 50 poles.

No.		Pkt.	Lb.	2 Lbs.
95	BURPEE'S NEW SUNNYBROOK POLE LIMA. Extremely early and very productive. Fine quality	\$.15	\$.50	\$.90
96	EARLY LEVIATHAN. The earliest large podded Lima. Large beans of fine quality10	.35	.60
	GIANT PODDED POLE LIMA. Very large pods and beans of fine quality. Matures late for main crop15	.45	.85

BUSH LIMA BEANS

1 Lb. will plant 100 ft. in hills or 50 ft. in drill
1¼ bu. to the acre.

Fordhook Bush Limas are the one and only kind for market. They yield heavy, vines are upright in growth, pods are large and thick and the beans are of fine quality, especially when picked young.

Place your order now for 1927 delivery. You may save money.



Fordhooks

No.		Pkt.	Lb.	2 Lbs.	10 Lbs.	Bu.
65	FORDHOOKS. From Burpee	\$.15	\$.40	\$.75	\$3.50	\$19.00
	FORDHOOKS. From Conn. Our regular strain15	.35	.70	3.25	17.00
63	BURPEE IMPROVED BUSH LIMA. The best flat podded Lima; very large, prolific and delicious in flavor10	.35	.65	3.10	

BUSH LIMA BEANS—*Continued*

66 PHILADELPHIA. Burpee's latest production. Described as the earliest Lima Bean grown15	.50	.90	4.25
68 WOOD'S PROLIFIC or IMPROVED HENDERSON'S BUSH LIMA. The bush "Butter Bean" of the South. Small, productive, quality10	.35	.60	2.80

All the above prices by the lb. are net, postage extra. See page 3 as to postal rates. Pkts. are postpaid.

Order by name and number, using my order sheet, if possible. Send for more if you need them.

BEETS—TABLE

1 oz. will sow 50 ft. of drill.

No.		Pkt.	Oz.	¼ Lb.	Lb.
111	CROSBY EGYPTIAN. An early beet of fine quality. One of the best	\$.05	\$.15	\$.40	\$.85
128	BURPEE'S IMPROVED BLOOD. This was my best beet until last year, when they did not mature satisfactorily. But am in hopes that Burpee will see that we have the right quality this year. However am listing the two best kinds that Dreer specializes on for you to try out..	.05	.15	.40	.85
	DREER'S SPECIAL CROSBY EGYPTIAN. Dreer says of this that it is as great an improvement over Crosby as Crosby was over the old Egyptian Blood. Fine quality, extreme earliness and perfect shape	.10	.20	.50	
	DREER'S EXCELSIOR BLOOD BEET. Rich dark color, extra early and fine quality, even when fully matured10	.25	.70	
	EARLY WONDER. This seed comes from Connecticut where it was developed to suit the Market Gardeners in that section. It matures very early and uniform, has a good dark color and of fine quality. Small tops05	.15	.40	1.00
115	DETROIT DARK RED. Quality. Good for canning or table. Main crop.....	.05	.15	.40	.90
117	BURPEE'S COLUMBIA. Quality05	.15	.40	.85
121	BURPEE'S BLACK RED BALL. For a small canning beet this is unsurpassed. Very dark05	.15	.45	1.20
119	SUNNYBROOK. New. Very deep crimson. Quick growing, sweet10	.15	.45	1.20
	SWISS CHARD. See page 25.				

BEETS—STOCK

No.		Oz.	¼ Lb.	Lb.
145	GIANT HALF SUGAR. Rose skinned. One of the best for cattle and fowl. Grows large, smooth, and full of sugar	\$.10	\$.25	\$.60
147	GOLDEN TANKARD. Yellow fleshed, large, solid10	.25	.60
151	MAMMOTH PRIZE LONG RED. Largest, heaviest cropping mangrel of all10	.25	.60

Seed by the Pkt., Oz. and ¼ lb. postpaid. Lb. prices are priced net, postage extra. See page 3 for postal rates.

BRUSSELS SPROUT SEED

2 to 3 ozs. will produce enough plants for 1 acre.

STERLING STRAIN. This is a very choice strain of seed selected and grown by the same careful grower that I have had grow this strain for me for a number of years. See page 2 for more about this strain. The plants grow medium tall and this insures a very large crop of choice Sprouts.

This seed will be treated with hot water to prevent Black Stem but to make further sure, be very careful of your seed bed. Do not sow your seed in soil that has grown sprouts or similar kinds in the past four years. If your plants are clean in the plant bed you do not have to be so careful in the field, only do not set in ground that was infested last year. Per Pkt. 25c, Oz. \$2.00, ¼ lb. \$7.00, lb. \$27.00. Postpaid.

CAULIFLOWER SEED

2 to 3 oz. will produce enough plants for 1 acre.

KROEMER'S LARGE EARLY ERFURT. Large white heads, heading up quite freely. There was no strain of seed that gave entire satisfaction last year as to heading up. That is why the price was so good. We have customers, though, who received good returns from Kroemer's Strain Erfurt, where they set the plants out fairly early. My seed will be treated with the hot water treatment, but to make sure of best results do not make your seed bed in soil that has had like crops on it for four years past, and do not set after potatoes unless potatoes were planted on grass ground or you lime the ground.

Per Pkt. 25c, Oz. \$2.00, ¼ lb. \$7.00, lb. \$27.50. Postpaid.

Will have a large bed of Cauliflower and Brussels Sprout Plants raised from the above strains of seed. Will be pleased to book your orders at any time. Prices always reasonable and ready to adjust them if changes occur.

Spray your Cauliflower and Brussels Sprout Plants with Nicotine Sulphate or dust with Nicotine Dust. They control Thrip and Lice.

CABBAGE SEED—LONG ISLAND GROWN

1 oz. will produce from 2 to 3 thousand plants.

No.		Pkt.	Oz.	¼ lb.
175	GOLDEN ACRE. New. Earliest of all. Round solid heads of fine quality. A comer. Danish grown	\$.25	\$1.25	
	EXTRA EARLY JERSEY WAKEFIELD. Earliest, pointed. Allen's special strain.....	.10	.25	\$.75
	LARGE EARLY CHARLESTON WAKEFIELD. Large, pointed. Allen's special strain10	.25	.75
178	COPENHAGEN MARKET. From Burpee. Extra early, round head10	.35	1.25
	STERLING ALL SEASON. Large, 2nd early, one of the surest heading kinds for Spring and Fall10	.30	1.00
	EARLY SUMMER. Large flat heads10	.25	.75
	PREMIUM FLAT DUTCH. Large, late10	.25	.75
	LARGE LATE DRUMHEAD. Standard late10	.25	.75
205	DANISH ROUND HEAD. Burpee's true strain. Short stem. Very solid heads of fine quality10	.30	.95
	SAVOY. Long Island Special. Large heads, crinkled, best quality10	.50	1.50
	RED. Allen's Special. Sure heading, large....	.10	.50	1.50
	CHINESE CABBAGE. Sow in August for the best Fall Salad. Use it either as lettuce, for cold slaw or cook it like cabbage. Can be sown in Spring.			
212	PE TSAI. Long head, large10	.25	.90
211	WOM BOK. Earliest, short hard head10	.25	.90

My Cabbage Seed is treated with the new Semi-San treatment to control Black Leg. This dry treatment stimulates germination and we found it very satisfactory last year in controlling disease.

Spray your Cabbage Plants with Nicotine Sulphate for Aphis and Thrip. Or dust with Nicotine Dust if you prefer. We find the dust very satisfactory in keeping our Plant Bed clean.

SPECIAL NOTICE—In filling all Garden Seed orders received before April 1st, I will put in from one to five sample packages, depending on the size of your order. If you find any of these samples of merit, I would be glad to hear of it.

Sterling, Conn., Feb. 10, 1925.

Mr. Ralph W. Sterling,

Dear Sir:—Have you any of your Sterling Strain of Sprout Seed this year? If you have, will you save me 3 ozs. and tell me what it is worth and I will send you check for it at once. Let me know before you sell it all as it is the best seed I ever bought. Hoping to hear from you soon, I remain

Yours respectfully,

G. R. BROWN.

CORN—SWEET

One lb. will plant from 100 to 200 hills.

No.		Pkt.	Lb.	² Lbs.	¹⁰ Lbs.
301	GOLDEN BANTAM. From Burpee. Sweetest corn there is. Medium early, small ears. Can be planted quite early. Some plant every week through the sea- son. Best for market	\$.10	\$.35	\$.60	\$ 2.60
	GOLDEN BANTAM. From Conn. Good pure seed of high germination10	.25	.45	2.20
	EARLY MAYFLOWER. Extra early. Large ears. Best for early market. A money maker. From Conn.10	.25	.45	2.20
305	FORDHOOK. Burpee's best extra early. Large ears. Very sweet and prolific....	.10	.35	.60	2.60
310	HOWLING MOB. Burpee's best second early. Large ears, very fine quality and prolific10	.35	.60	2.50
329	GOLDEN GIANT. A week later than Golden Bantam. Large yellow ears, fine quality15	.40	.75	3.50
	GOLDEN GIANT. From Conn. Good stock. Cross between Golden Bantam and Howling Mob10	.30	.55	2.50
	METROPOLITAN. Large ears. Sweet, 2nd early, finest quality10	.30	.50	2.30
	SQUANTAM. One of the best 2nd earlies. Ask anyone in Orient about Squantam if you are not sure as to quality10	.30	.55	2.60
	LONG ISLAND BEAUTY. Very large ears and a great favorite for market. Late10	.30	.50	2.40
314	SWEET ORANGE. A mid-season yellow corn of fine quality. Large ears, pro- ductive10	.30	.50	2.40
316	DELICIOUS. Burpee's Newest White Sweet Corn. Burpee claims it to be the sweetest White Sweet Corn, being a sport of the Golden Bantam. Try a pkt. and see for yourself how good it is15	.50		
325	SUNNYBROOK. From the same sport as Delicious, only kernels are yellow. A lit- tle earlier than Delicious and equally as sweet15	.50		
	DREER'S NEW EXTRA EARLY SUGAR CORN "INDEPENDENCE." Stalks average 3½ ft. high and produce 2 and 3 ears 7 to 8 inches long, to the stalk. Qual- ity of surprising sweetness and it matures				

No.	CORN—SWEET— <i>Continued</i>	2		10	
		Pkt.	Lb.	Lbs.	
	in 60 days, which is a week or ten days earlier than White Corey. The above is Dreer's description and we sincerely hope it is true as it will make a great addition to our garden if it is15	.50	.95	
	HARRIS ALPHA. The earliest corn that Harris has found in all his trials. Stalks 4 to 5 ft. high, ears 5 to 6 inches long. Both kinds listed above are white10	.35	.60	
	BANTAM EVERGREEN. A large eared yellow corn of fine quality. Just what your city customers will go wild over....	.10	.30	.55	2.50
333	WHITE EVERGREEN. A few days earlier than Stowell's, pure white kernels, which makes it excellent for canning. quality10	.30	.55	2.60
335	STOWELL'S EVERGREEN. Standard Stays tender a long time. Very fine for late. Large ears10	.30	.55	2.60
	STOWELL'S EVERGREEN. From Conn. Good seed10	.30	.50	2.30
337	COUNTRY GENTLEMAN, or SHOE PEG. Considered by many the sweetest of all White Sweet Corn. Ziz zag kernels10	.30	.55	2.60
340	BLACK MEXICAN. One of the sweetest late corns. If you do not mind the purple cast to it you will enjoy it as well as the Golden Bantam10	.30	.55	2.60

All the above prices by the lb. or more are net, postage extra. See page 3 for postal rates.. Pkts. are postpaid.

CARROT SEED

1 oz. will sow 200 ft. of drill.
2 lbs. to the acre.

No.		Pkt.	Oz.	¼ Lb.	Lb.
218	AMSTERDAM FORCING. One of the best for table use. Early, small	\$.05	\$.15	\$.50	\$1.40
223	BURPEE'S OXHEART. Quality05	.15	.45	1.05
221	CHANTENAY or MODEL. The leading kind for early market, tender05	.15	.45	1.05
226	HALF LONG NANTES. Cylindrical, about 6 inches long, quality05	.15	.45	1.10
225	DANVERS HALF LONG. The standard kind for field and garden. Burpee's strain, very select. Heavy yielding05	.15	.45	1.05
	DANVERS HALF LONG. A select strain from California05	.15	.40	.90

BURPEE'S CELERY SEED

No.		Pkt.	Oz.	¼ lb.
266	WHITE PLUME. Earliest, self blanching.....	\$.10	\$.25	\$.90
272	BURPEE'S FORDHOOK. The very best for home garden. Dwarf type, crisp, nutty flavor of excellent quality, suitable for Fall use and Winter storage. Stalks smooth and very thick	.15	1.00	3.00
260	BURPEE'S GOLDEN SELF BLANCHING. Dwarf compact growth and blanches easily to a clear waxy yellow. Delicious flavor.....	.15	.60	2.00
	GOLDEN PLUME. Livingston's strain. This strain is very select, matures early, keeps long in storage and is a very superior new variety. Rust and Blight resistant to a marked degree.			
	¼ oz., \$1.0025	3.00	
267	EASY BLANCHING. A fall and winter variety of great merit. It blanches easily and often does well on soil that other kinds will not grow on. Stalks thick, of fine quality15	.60	2.00
282	GIANT PASCAL. Standard late sort. Tall, very crisp and nutty flavor10	.30	.90
275	WINTER QUEEN. Dwarf type. Very heavy stalks and large hearts10	.30	.90

Will have an extra large bed of plants this year. Place your orders early. All kinds listed. See page 57.

Seed by the Pkt., Oz. and ¼ lb. are postpaid.

Seeds by the lb. are net. Postage extra. See page 3 as to postal rates.

THE BULL'S EYE

(o) "Good as Gold." This Mark (o), now called a bulls-eye, was used by ancient Alchemists to represent gold. Burpee uses the Bulls-eye (o) to mark those varieties of vegetables which they consider the very best of their class and most satisfactory for general cultivation throughout the country. About all the kinds that I list carry a "Bulls-eye" in Burpee's Catalog.

CORN—FIELD, POP AND FODDER

1 peck of Field Corn will plant 1 acre in hills 4 ft. x 4 ft.

1 bushel of Fodder Corn will plant 1 acre in drills.

LUCE'S FAVORITE FIELD CORN. A yellow hybrid, makes a leafy stalk and a very fine large ear.

Selected ears, each, 5c; per 100, \$3.50.

Shelled, per lb., 10c; 10 lbs., 80c; per bushel of 56 lbs., \$2.50.

L. I. RED COB. A reddish colored dent corn of good yielding quality. One of the best for this section. Same price as LUCE'S FAVORITE.

353 QUEEN'S GOLDEN POPCORN. Largest and best. Buy a lb. for popping. Per pkt. 10c; per lb. 30c.

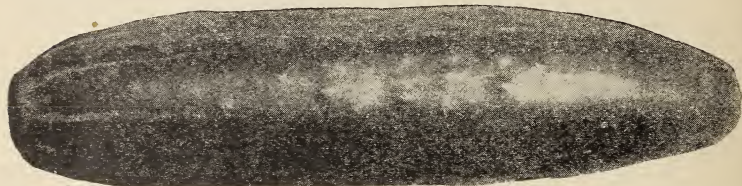
6073 SORGHUM or EARLY ORANGE SUGAR CANE. Succulent and sweet. Per lb., 20c; per 10 lbs., \$1.50.

CORN—*Continued*

6077 TEOSINTE. One of the best plants for fodder; grows up again after cutting. Use only 6 lbs. to acre. Pkt., 10c; per lb., 60c; 10 lbs., \$4.80.

6045 SWEET CORN FOR FODDER. Per lb., 20c.; 10 lbs., \$1.80. Please use my order sheet in ordering and order by number and name. More order sheets and envelopes will be sent on request.

CUCUMBER SEED

*Davis Perfect*

1 oz. will plant 100 hills. 1 to 5 lbs. to the acre.

No.		Pkt.	Oz.	¼ Lb.	Lb.
371	EARLY GREEN CLUSTER. Small, prolific, a good pickling sort	\$.05	\$.15	\$.45	\$1.10
375	EVERBEARING. Very early and prolific, one of the best for small pickles05	.15	.45	1.10
377	EXTRA EARLY GREEN PROLIFIC, or BOSTON PICKLING. Keep the fruit picked and the vines will bear until frost; a medium sized good quality pickle cucumber05	.15	.45	1.10
395	BURPEE'S FORDHOOK PICKLING. One of the best pickling sorts. Thin skinned and very prolific10	.25	.75	2.00
	CHICAGO PICKLING. A fine pickling sort of good color and preferred by some to the Boston Pickling05	.15	.45	1.10
381	ARLINGTON WHITE SPINE. One of the best for market. Very productive..	.05	.15	.50	1.20
379	BURPEE'S EXTRA EARLY WHITE SPINE. The very best in quality. Good for very early or very late plantings....	.05	.15	.50	1.40
383	BURPEE'S FORDHOOK WHITE SPINE. This is one of the best for home garden, market, or if picked young, for pickles...	.05	.15	.50	1.40
400	DAVIS PERFECT. The most popular kind for market. A large green cucumber, free from disease and very prolific05	.15	.50	1.60

CUCUMBERS--Continued

No.		Pkt.	Oz.	¼ Lb.	Lb.
399	LONDON or IMPROVED LONG GREEN. Good for home garden, market, or if picked small makes fine pickles10	.20	.60	1.90
401	EARLY FORTUNE. A select strain of DAVIS PERFECT. Good quality and fine for market. Early05	.15	.50	1.25
393	FORDHOOK FAMOUS. The best fla- vored and largest of the White Spine type. Very prolific10	.20	.70	2.00
	WOODRUFF'S HYBRID. A wonderful, fine shipping cucumber of perfect shape and color. Very productive and a great favorite05	.15	.50	1.90
	KIRBY'S STAY GREEN. Claimed to be perfect in shape, color and shipping qual- ities. Early and productive05	.15	.50	1.25
	CLARK SPECIAL. A fine large Cucum- ber quite free from disease. Good shape and productive. One of the best.....	.05	.15	.50	1.25
	Have a large supply of Cucumber Seed always on hand. Special prices on 5 lb. lots.				

EGG PLANT SEED

No.		Pkt.	Oz.
420	BURPEE'S BLACK BEAUTY. Early and best....	\$.15	\$.45
422	NEW YORK SPINELESS IMPROVED. Late, large Will have a fine lot of Egg Plants in season, well hardened.	.10	.40

ENDIVE

No.		Pkt.	Oz.
430	GREEN CURLED or GIANT FRINGED OYSTER. Best in Summer and Fall	\$.10	\$.20
397	FRENCH ENDIVE or WHITLOOF CHICORY. Sow in June for winter salads. Store in your cellar and sprout them as wanted10	.20

KALE

No.		Pkt.	Oz.	¼ Lb.	Lb.
446	DWARF GREEN CURLED. One of the best for greens	\$.05	\$.15	\$.40	\$.95

KOHL RABI

No.		Pkt.	Oz.	¼ lb.
456	EARLY WHITE VIENNA. Best quality, extra early, short topped. The young roots resemble Cauliflower in flavor	\$.10	\$.25	\$.80

LEEK

No.		Pkt.	Oz.	¼ lb.
465	LONG MEZIERES. Burpee's best. Should be blanched white for best quality	\$.10	\$.30	\$.80

LETTUCE

1 oz. will plant 250 ft. of drill.

No.		Pkt.	Oz.	¼ Lb.	Lb.
475	BIG BOSTON. One of the best for early sowing or late Summer. Heads best in cool weather. Burpee's select stock....	\$.10	\$.20	\$.65	\$ 1.85
	DREER'S FRENCH UNRIVALED. Sure heading. Good for sowing in Spring or Summer. Like Big Boston only free from brown leaves, and does not run to seed so quickly10	.45		
474	MAY KING. Quite early, heads nicely in early Spring, quality fine and crisp.....	.05	.15	.50	1.65
476	BURPEE'S WAYAHEAD. One of the earliest heading varieties, fine flavor and a sure heading kind10	.20	.65	1.90
469	BLACK SEEDED TENNIS BALL or SALAMANDA. A great favorite. Quality is there; a sure header10	.20	.60	1.75
473	WHEELER'S TOM THUMB. Heart and outside leaves tender and juicy. Keeps from shooting to seed longer than any other kind, even in hot weather05	.15	.50	1.45
504	DEACON. One of the best Butterhead sorts, quality. Fine for Summer and Fall05	.15	.50	1.20
514	BURPEE'S BUTTERHEAD. Very fine quality, large, solid golden yellow heart10	.20	.60	1.75
528	BURPEE'S BRITTLE ICE. Very crisp and sweet; stands hot weather well10	.25	.75	2.75
530	BURPEE'S ICEBERG. Very crisp and juicy. Outside leaves fringed and tinged with brown, waxy and crisp white solid heart10	.20	.65	1.90
522	HANSON. One of the largest and surest heading sorts. Crisp, mild and tender..	.10	.20	.60	1.65
524	NEW YORK IMPROVED. Some consider this the very best lettuce there is. Leaves curled nicely; heart crisp and sweet; large size; quality. Leaves green10	.20	.70	2.00
493	EARLY CURLED SIMPSON for cutting. Black seeded. Best loose leaved10	.15	.50	1.50
497	EARLY PRIZE HEAD. Outside leaves brown, well blanched heart. Does not head up10	.20	.60	1.75

LETTUCE—*Continued*

- 537 COS. or ROMAIN. Dwarf White Heart.
 Burpee's best Cos. Crisp, juicy. Does
 not have to be tied up as leaves curl over .10 .20 .60 1.75

Greens and Salads are rightly called "Nature's Tonics." The American people are too much inclined to eat pastries and highly seasoned and concentrated meat-foods, which are rich in proteins and fats, but are almost entirely lacking in mineral salts. The importance of these mineral salts in the diet, although it has been only recently recognized, cannot be overestimated. The natural source of these essential salts is the Greens and Salads. They should constitute a considerable portion of our food. The majority of the salad plants are easily grown. They are free from insect pests and are adapted to a wide range of soil and climate. They should be grown extensively in every garden. Most varieties can be sown as succession crops, and there is no month during the entire garden season that will not produce one or the other of these useful Greens and Salads. Plant to have Greens and Salads for two meals every day.—Burpee's Annual.

MUSK MELON

1 oz. will plant about 50 hills.

BURPEE'S Musk Melons are the standard for quality.

No.		Pkt.	Oz.	¼ Lb.	Lb.
544*	BURPEE'S NETTED GEM or ROCKY FORD. One of the best table melons...	\$.05	\$.15	\$.45	\$1.10
554*	EXTRA EARLY HACKENSACK. Early and sweet. Heavily ribbed and netted..	.05	.15	.45	1.10
550*	OLD FASHIONED JENNY LIND. One of the sweetest of the green fleshed sorts	.05	.15	.45	1.10
	BENDER'S SURPRISE. The melon that made such a sensation in this section the last 3 years. Quality the best. Grey skin. Orange flesh. Luscious. Large size. Seed from Conn.10	.20	.70	2.00
557	HONEY BALL. New. A cross between a Cantaloupe and a Honey Dew. Really an early maturing Honey Dew Melon retaining the wonderful Honey Dew flavor	.10	.30	.90	
562*	MONTREAL GREEN NUTMEG. Very large and of good quality05	.15	.45	1.10
546*	BURPEE'S MATCHLESS. Large oval fruits of rich sugary flavor10	.20	.70	2.00
571	HEARTS OF GOLD, or HOODOO. Blight resisting, Midseason. Medium sized melon of delicious flavor05	.15	.50	
574	BURPEE'S FORDHOOK. Flesh very thick and rich, orange yellow. Luscious flavor05	.15	.45	1.10

MUSK MELON—*Continued*

No.		Pkt.	Oz.	¼ Lb.	Lb.
575	BURPEE'S EMERALD GEM. The most delicious of all small melons. Salmon or orange flesh, luscious. Green skin, early05	.15	.45	1.10
577	OSAGE or MILLER'S CREAM. A large Emerald Gem, slightly netted05	.15	.50	1.40
578	BURPEE'S SPICY. Bright yellow skin with a deep rich salmon flesh of extreme lusciousness. Large melons. Thick flesh10	.20	.70	2.00
585	GOLDEN EAGLE. Large and very fine quality. Good for heavy soil10	.20	.70	1.90

* Those marked with an asterisk (*) are Green Fleshed.

WATER MELON

1 oz. will plant 25 hills.

No.		Pkt.	Oz.	¼ Lb.	Lb.
588	BURPEE'S FORDHOOK EARLY. A large extra early melon of good quality	\$.05	\$.15	\$.45	\$.90
590	COLE'S EARLY. A small early melon, sure to ripen. Of good quality05	.15	.40	.75
	FLORIDA FAVORITE. One of the finest flavored melons there is. White seeded, flesh deep pink. Seed from Livingston	.05	.15	.40	.90
608	KLECKLY SWEETS. Burpee's. One of the best for home garden. Good in quality, size and yield, long melons05	.15	.40	.90
611	HALBERT HONEY. Burpee's selection as the best for home gardens. Sweet...	.05	.15	.40	.90
621	PERFECTION. New, extra large melon, fine quality. Good for market or home	.10	.15	.50	1.40
596	BURPEE'S CUBAN QUEEN. Striped, weighty and dark green; large, juicy and good quality05	.15	.40	.90
	ICE CREAM. Livingston's True White Seeded. The most popular kind that we carry. Does well for everybody. Sweet	.05	.15	.40	.90
613	TOM WATSON. Very large and good quality. One of the best for market...	.05	.10	.30	.70
601	SUGAR STICK. Large, light skinned, Bright red flesh. Fine in quality05	.15	.40	.90
645	COLORADO PRESERVING or CITRON	.05	.15	.40	1.00

Smithtown Branch, L. I., N. Y.

Mr. Ralph W. Sterling,

Dear Sir:

Strawberry plants are fine. Reached me in splendid order.

Yours truly,

ANNA BLYDENBURGH

MUSTARD

No.		Pkt.	Oz.
647	FORDHOOK FANCY. Very large. One of the best and largest of greens	\$.05	\$.15

OKRA OR GUMBO

No.		Pkt.	Oz.
667	PERFECTED PERKINS. Long pod. Very prolific. Used for soups or as a separate dish	\$.05	\$.15

ONION SEED

Crop failed. Seed very scarce and high.		Pkt.	Oz.	¼ Lb.	Lb.
No.	JAPANESE YELLOW or EZENEZER. From California. Very mild, long keeper; flat. 2-year-old seed	\$.10	\$.25	\$.75	\$ 2.25
681	PRIZETAKER. American grown. Large yellow. Very heavy yielding, mild flavor. Burpee's selected strain10	.40	1.50	5.75
671	YELLOW GLOBE DANVERS. Standard for Winter use. A great keeper. Mild10	.50	1.75	6.50
687	RED WETHERSFIELD. The most popular of all red onions. Flat, large and a heavy yielder10	.40	1.20	4.50
697	WHITE PORTUGAL or WHITE SILVERSKIN. Flat, large, if sown thin. Sow thick for pickles. Mild10	.60	1.75	6.50
711	BURPEE'S GIGANTIC GIBALTAR. Largest yellow, globe shape. Mild and very sweet10	.40	1.35	5.00
707	BURPEE'S MAMMOTH SILVER KING. The largest white onion. Sweet and tender. Matures early10	.30	1.10	4.00

Spray your onions with Hall's Nicotine Sulphate and save them from the Thrip.

Eat Onions for Health!

Scientists have found in onions some very valuable ingredients. They claim that onions promote digestion to a marked degree.

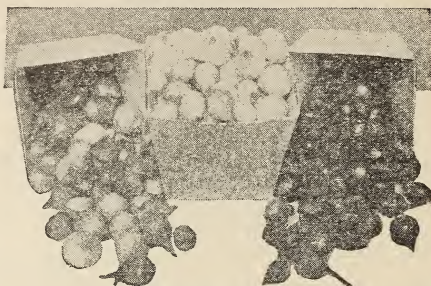
Riverhead, L. I., N. Y.
Jan. 15th, 1926.

Mr. Ralph W. Sterling,
Cutchogue, L. I.
Dear Sir:

We have had good results from the Cossack Alfalfa seed we obtained from you for the past two years. We drilled it in on oat stubble about August 15th and had a stand 6 to 8 inches high with tap root 4 to 5 before killing frost, (samples of which were sent you). We have planned to seed another piece the coming season.

Yours truly,

MILLER P. DAVIS



ONION SETS

Small, hard, fancy sets.

1 lb. makes a quart. 32 lbs. to the bushel.

	Pkt.	Lb.	10 Bu. of lbs. 32 lbs.
WHITE SILVER SKIN. Fancy	\$.10	\$.25	\$2.00 \$5.00
RED. Fancy Red Globe10	.25	2.00 5.00
YELLOW. Nice hard sets. Globe10	.25	2.00 5.00
JAPANESE YELLOW. A selected strain that grows better and keeps longer than any other sort. Does not shoot to seed.....	.10	.25	2.00 5.50

Spray your onion sets with Hall's Nicotine Sulphate and insure your crop. It is the Thrip that turns the onion tops brown.

PARSLEY

1 oz. will sow a 50 ft. row.

No.		Pkt.	Oz.	¼ lb.
717	EXTRA CURLED DWARF or EMERALD. Very fine moss-like leaves	\$.05	\$.15	\$.40
714	PLAIN or SINGLE. Fine for soup05	.15	.40

PARSNIP

1 oz. will sow 150 ft. of row.

No.		Pkt.	Oz.	¼ lb.
725	GUERNSEY. Broad shoulder, tapering to a point. The best and most productive	\$.05	\$.15	\$.35
727	HOLLOW CROWN. Long smooth. The old stand-by05	.15	.35

PEPPERS

No.		Pkt.	Oz.
818	NEAPOLITAN. Earliest of all, large and mild....	\$.10	\$.40
	CHINESE GIANT. Largest of all, mild. Living- ston's seed		.15 .60

PEPPERS—Continued

No.		Pkt.	Oz.
820	SWEET MEAT GLORY. Burpee's Pimento, sweet..	.15	.55
823	LARGE BELL or BULL NOSE. Hot, large10	.40
821	RUBY KING. Large, prolific, mild10	.35
843	GOLDEN QUEEN. Large, sweet, yellow10	.40
837	LONG CAYENNE. Hot, small10	.40
833	BURPEE'S NEW SUNNYBROOK. A small, very sweet Pimento Pepper. Thick fleshed, fine quality, and productive20	.85
Will have a fine lot of Pepper Plants in season. All kinds.			

PUMPKIN

1 oz. will plant 25 hills.

No.		Pkt.	Oz.	¼ Lb.	Lb.
861	EARLY SUGAR. A very fine Pie Pump- kin. Yellow skin and flesh	\$.05	\$.15	\$.40	\$.85
867	BURPEE'S GOLDEN OBLONG. Large, good quality. 10 to 20 inches long05	.15	.40	1.10
875	GENUINE MAMMOTH. Largest of all	.05	.15	.50	1.25
872	STRIPED CUSHAW. A long-necked squash-like pumpkin of fine quality. Very meaty. Rich yellow flesh05	.15	.40	.95
1048	WINTER LUXURY or PIE SQUASH. Fine. Light skin, yellow flesh05	.15	.40	.95
865	LARGE CHEESE. Flattened, skin creamy buff, orange flesh. Fine keeper05	.15	.40	.90

March 27, 1925.

Dear Mr. Sterling:

Seeds came O. K. also potatoes which are the finest Irish Cobblers I've had for a good while. Many thanks.

Yours truly,

LEWIS H. BROWN

Wading River, L. I.,
May 6, 1925.

Mr. Ralph W. Sterling,
Cutchogue, Long Island.

My Dear Sir:

The strawberry plants ordered from you came today in first class condition. I will say that in all the years I have been buying plants, these are the finest that I ever bought or saw.

Very truly yours,

F. T. EMMONS

East Quogue, Dec. 10, 1925.

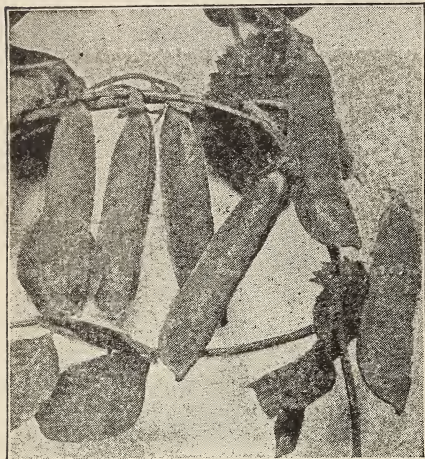
Mr. Ralph W. Sterling,
Cutchogue, Long Island.

Dear Mr. Sterling:

My strawberries are looking fine. I don't believe there is better ones in Suffolk County. I am more than pleased with all the stock which I have received from you. I wish you every success which you deserve for the fine quality of goods you furnish. Wishing you a Merry Christmas and a pleasant and prosperous New Year. I am sincerely yours,

N. S. JACKSON

PEAS

*Gradus*

Burpee's Peas are considered the best money can buy, and my stock from Connecticut gave wonderful crops and fine satisfaction the last 3 years. Last year the price was good but even though they only pay expenses the vines are of great manurial value. Plow under a heavy crop of pea vines for your late crops and be convinced of their value.

My GRADUS, THOMAS LAXTON and LAXTONIAN PEAS from Connecticut are considered the best for market. Advise planting as early as possible. The early prices seem to be the best and there is not so much trouble with the Aphis.

GRADUS and THOMAS LAXTON grow tall vines and very large pods. The LAXTONIAN is dwarf in vine and has large pods and lots of them. Seed of the LAXTONIAN is scarce and high.

The RADIO, BLUE BANTAM, LITTLE MARVEL, BRITISH WONDER, CARTER'S DAISY and ALDERMAN or TELEPHONE are the gardener's favorites for table use and for canning.

I have over 100 bushels of choice new crop pea seed this season. Good seed is scarce and high. The prices quoted below for bushel lots are cash prices. Add \$1.00 per bushel for time.

1 lb. of peas will plant 100 ft. of row.
1 to 2 bu. to the acre.

No.		Pkt.	Lb.	2 Lbs.	10 Lbs.	Bu.
730	MARKET SURPRISE. Very early, prolific, and of good quality. 2 ft.	\$.10	\$.35	\$.65	\$ 3.00	\$ 12.00
731	BURPEE'S BEST EXTRA EARLY. One of the best of the smooth-seeded sorts. 2 ft.10	.35	.65	3.00	12.00
732	RADIO. Burpee's latest introduction. Dwarf, extra early and fine quality. Good for planting in August for Fall crop. 1 ft.10	.35	.65	3.00	~

PEAS—Continued

No.		Pkt.	Lb.	2 Lbs.	10 Lbs.	Bu.
739	ALASKA or EARLIEST OF ALL. Have found no kind as early as this yet. Picked when the peas are small they are fine quality and somehow the birds do not seem to bother them like they do later kinds. 2 ft.10	.30	.55	2.70	11.50
742	EXTRA EARLY PILOT. A large, smooth-seeded kind. Ripens a little earlier than Gradus. Fine for first planting for market. 2½ ft.10	.30	.55	2.30	11.00
745	GRADUS or PROSPERITY. Earliest wrinkled seeded kind. One of the best for home garden or market. 2 to 3 ft.10	.35	.65	2.80	12.00
	GRADUS. From Conn. and Penn. Fine stock10	.30	.55	2.30	11.00
746	THOMAS LAXTON. About the same as Gradus. 3 or 4 days later, perhaps, a little more prolific and equally fine quality10	.35	.65	2.80	11.50
	THOMAS LAXTON. From Conn. and Penn. Fine stock10	.30	.55	2.10	10.50
	LAXTONIAN. From Conn. and Penn. This kind grows only 15 to 18 inches high and is preferred by many on that account. Very prolific and about as early as Gradus. Very popular for market. Large pods10	.30	.55	2.50	12.50
749	PREMIUM GEM. Very dwarf vines, prolific and fine flavor. 2nd early, 1 ft.10	.35	.60	2.70	
751	AMERICAN WONDER. Even more dwarf than Premium Gem. 2nd early, prolific10	.35	.60	2.70	
753	LITTLE MARVEL. One of the best for home gardens. Sweet, prolific, 15 in.10	.35	.65	3.00	12.00
754	BLUE BANTAM. A fine strain of Laxtonian. Burpee's special stock15	.40	.75	3.50	14.50
755	NOTT'S EXCELSIOR. Standard for 2nd early. Large pods, prolific. 15 in.10	.35	.60	2.70	12.00
786	BRITISH WONDER. Early mid-season. Very prolific, large sweet peas. 18 in.10	.35	.60	2.70	11.50

PEAS—Continued

No.		Pkt.	Lb.	2 Lbs.	10 Lbs.	Bu.
793	CARTER'S DAISY or DWARF TELEPHONE. Only grows 18 inches high and has pods as large as Telephone. Superb quality....	.10	.40	.75	3.25	
789	STRATEGEM or POTLATEH. One of the best for late dwarf. Very sweet peas, prolific and large. 2 ft.10	.35	.60	2.90	
800	JUNO or DWARF CHAMPION. This is the latest Dwarf Pea, of fine quality10	.30	.55	2.70	
772	TELEPHONE. The standard Tall Pea. If you do not plant these peas too late they will make an enormous crop, and are fine in quality and very large. 4 ft....	.10	.35	.60	2.70	
783	BOSTON UNRIVALED. Called an Improved Telephone. 5 ft....	.10	.35	.60	2.70	
785	ALDERMAN. A week later than Telephone. Large and sweet. 4 ft.	.10	.35	.60	2.70	
784	QUITE CONTENT. The largest podded pea there is, and it is so very sweet that the pea will rot in the ground if planted too early. 5 to 6 ft.15	.50	.85	3.50	
815	MAMMOTH MELTING SUGAR. The best edible podded pea. Pick when peas are small and cook as you would string beans. 6 ft....	.10	.50	.85		

All the foregoing prices by the lb. and over are net, postage extra. See page. 3 as to postal rates. Pkts. postpaid.

The above is as fine a collection of peas as you can find anywhere I am sure, and have tried to list them in order of ripening. I advise you to select four or five kinds, plant the extra early ones as soon as you can work the ground and then when ground is a little warmer plant the whole succession. That will keep you supplied with peas as long as they will develop properly.

RADISH

1 oz. will sow 50 ft. of drill.

No.		Pkt.	Oz.	¼ Lb.	Lb.
	LIVINGSTON'S SAXA. One of the best and quickest growing Radishes. Red, turnip shaped, crisp and sweet. 25 days...	\$.05	\$.15	\$.45	\$ 1.15
877	BURPEE'S EARLIEST or SCARLET BUTTON. 25 days. Fine, crisp, juicy and tender10	.15	.45	1.15

RADISH—Continued

No.		Pkt.	Oz.	¼ Lb.	Lb.
	NON PLUS ULTRA. (Fireball). One the earliest Sparklet Turnips. Fine05	.15	.45	1.20
	COOPER'S SPARKLER or SCARLET TURNIP WHITE TIPPED. Fine. 28 days05	.15	.40	1.00
907	FRENCH BREAKFAST. Olive shaped, very fine, quick growing, snappy05	.15	.40	.90
883	VICK'S SCARLET GLOBE. Long season	.05	.15	.40	.90
886	CRIMSON GIANT, GLOBE. Large, does not get pithy. Very mild and crisp....	.05	.15	.40	.90
938	WHITE ICICLE. Long, very crisp, sweet and tender. Best long05	.15	.40	.85
963	WHITE CHINESE or CELESTIAL. Best for Winter use05	.15	.40	1.00

SALSIFY or VEGETABLE OYSTER

No.		Pkt.	Oz.	¼ lb.
983	MAMMOTH SANDWICH ISLAND. Use like parsnip, for Fall, Winter and Spring	\$.10	\$.25	\$.80

SORREL

Broad leaved Improved. Sour grass for Greens.. .05 .20

SQUASH

1 oz. will plant from 25 to 50 hills.

No.		Pkt.	Oz.	¼ Lb.	Lb.
1010	EARLY WHITE BUSH. Scalloped, earliest Patty Pan	\$.05	\$.15	\$.40	\$.90
1018	EARLY GOLDEN CROOKNECK. Bush, fine quality. Use when young05	.15	.45	1.10
1020	GIANT GOLDEN CROOKNECK. Very large. Use when the squashes are young and tender. Fine quality05	.15	.45	1.10
1031	LONG WHITE MARROW or VEGETABLE MARROW. 12 in. long and 4 to 5 in. thick. Bush. White flesh05	.15	.45	1.10
1030	COCOZELLE BUSH. A long, green squash. Does not send out long vines..	.05	.15	.45	1.20
1032	BURPEE'S FORDHOOK. A delicious squash of fine flavor; good for Summer and Fall. Vining type05	.15	.45	1.10
1034	BUSH FORDHOOK. Of the same fine quality as 1032, but in bush form....	.05	.15	.45	1.10
1036	BOSTON MARROW. Fine grained, dry and sweet; golden skin. Fall and Winter05	.15	.45	1.00
1038	BURPEE'S TRUE WARTED HUBBARD. Best for pies. Green05	.15	.45	1.20

SQUASH—Continued

No.		Pkt.	Oz.	¼ Lb.	Lb.
1040	CHICAGO WARTED HUBBARD. Larger and more heavily warted than No. 1038; fine keeper. Dark green....	.05	.15	.45	1.20
1042	RED or GOLDEN HUBBARD. One of the best for pies. Golden flesh.....	.05	.15	.45	1.15
1052	DELICIOUS. The squashes weigh from 5 to 10 lbs. and vary in shape and size, but are uniform in delicious quality and splendid winter keepers05	.15	.45	1.15

The Squash has been found to be one of the vegetables that contain a quantity of those valuable vitamins. Plant squash for your children, and serve it like potatoes, every day.

SWISS CHARD or SILVER BEET

Swiss Chard is one of the best greens there is. Cut outside leaves and it will grow out again and again. One oz. will sow 50 ft. of drill.

No.		Pkt.	Oz.	¼ Lb.	Lb.
137	LUCULLUS. Large stalks and leaves, heavily crumpled05	.15	.45	1.10
136	LARGE RIBBED WHITE. Smooth leaves that wash easily05	.15	.45	1.10

SPINACH

1 oz. will sow 50 ft. of drill.

No.		Pkt.	Oz.	¼ Lb.	Lb.
979	KING OF DENMARK. This new Spin- ach stands longer than any other kind excepting the New Zealand. The leaf is large, dark green and nicely crumpled. Comes early and stays late	\$.05	\$.10	\$.30	\$.60
990	HENDERSON'S LONG SEASON. Thick, crumpled, dark green leaves. One of the best05	.10	.25	.50
991	BURPEE'S VICTORIA. Good quality..	.05	.10	.25	.50
993	THICK LEAVED ROUND. Very pro- ductive. Quality05	.10	.25	.50
999	SAVOY LEAVED. Best for Fall sowing	.05	.10	.25	.50
1005	NEW ZEALAND. The hot weather Spinach. Spreading. Use the tips or new sprouts. Will last till Fall05	.15	.40	.90

Cutchogue, N. Y., Jan. 19th, 1926.

Mr. Ralph W. Sterling,
Dear Sir:

From 1 acre Kroemer's Erfurt Cauliflower grown from your seed this past season, I harvested about two thirds of the plants in the field and received over \$400 for the same. I did not see a plant affected with Black Stem, Black Leg nor Blight.

Sincerely,

STEWART W. HORTON

TOMATO SEED

No.		Pkt.	Oz.	¼ Lb.	Lb.
1097	BURPEE'S SUNNYBROOK EARLIANA. The earliest of all Red Tomatoes. Smooth	\$.10	\$.40	\$ 1.25	
	RICE'S SELECTED EARLIANA. A distinct new strain of this early tomato, pronounced by leading Seedsmen as the Perfect Earliana. Try a pkt. or oz. if you want a fancy market tomato for the earliest market15	1.50		
	RED HEAD. Early, very deep red. Livingston's seed. Does well on Long Island10	.40	1.30	4.25
1101	CHALK'S EARLY JEWEL. Seed specially selected at Fordhook. One of the largest, smoothest and finest flavored extra early bright red tomato10	.30	1.00	3.25
	BONNY BEST. Early, very productive, firm, medium size. Livingston's10	.35	1.20	4.25
	JOHN BAER. From Livingston. The largest and best early tomato. Very prolific, smooth and firm. Fine quality..	.10	.35	1.20	4.25
1114	PONDEROSA. Large, meaty, fine quality. One of the best for home use. Beef steak15	.50	1.75	5.75
1074	STONE. Standard for home use and for market. Firm, good color and a heavy yielder. Best for canning10	.30	1.00	3.35
	STONE. Livingston's Selected Seed. Very choice. Originator's stock10	.40	1.30	5.00
	LIVINGSTON'S OXHEART. A new sort that we tried out last year and found very desirable. Large, firm, thick fleshed and of very good quality. Rather pointed in shape which gives it the name	.35			
	GOLDEN PONDEROSA. Large yellow fruit of finest quality. No acid. Yellow	.20			
	CLARK SPECIAL B. A selected Stone of unusual merit. One of the best for market. From Conn.10	.35	1.20	4.00
1108	BURPEE'S MATCHLESS. Burpee claims this to be the best for home gardens, and for market. Large, smooth, bright cardinal red. Even colored10	.35	1.10	3.90
	LIVINGSTON'S GLOBE. Fine for market. Almost Blight-proof; delicious flavor. Color purple, firm10	.40	1.40	5.40

TOMATO SEED—*Continued*

No.		Pkt.	Oz.	¼ Lb.	Lb.
1112	TRUCKER'S FAVORITE. The choicest large fruited purple tomato. Fordhook Grown seed. Very prolific10	.35	1.10	
1095	BURPEE'S DWARF GIANT. Tree-shaped plants. Fruit very large, firm and of fine quality15	.70		
1139	YELLOW PEAR. The best of the small fruited kinds. Very prolific. Makes fine preserves10	.50		
1117	BURPEE'S NEW SELF PRUNING TOMATO. A novelty just put out by Burpee. Second early. Prunes itself..	.15	.65		
1138	GOLDEN DWARF CHAMPION. The best large yellow. Very sweet and meaty15	.60		

Will have a fine lot of plants from the above strains of seed in season. Would appreciate your early orders if you want plants by the thousand.

TURNIP and RUTA BAGA SEED

No.		Pkt.	Oz.	¼ Lb.	Lb.
1159	EXTRA EARLY WHITE MILAN. Best for early	\$.05	\$.15	\$.40	\$.90
1157	EARLY RED or PURPLE TOP STRAP LEAF. A flat, early turnip, of fine quality. Good for Fall and Winter...	.05	.10	.30	.65
1169	WHITE EGG. Early globe-shaped. Fine quality, free from stringiness05	.15	.40	.80
1183	GOLDEN BALL, or ORANGE JELLY. Sweet and delicious05	.10	.30	.65
1191	BURPEE'S PURPLE TOP YELLOW RUTA BAGA. The standard for winter storing. Fine quality05	.10	.30	.65
1194	GOLDEN NECKLESS. Large, a heavy yielder and a good keeper. Green top	.05	.10	.25	.60
	NEYLON'S PURPLE TOP RUTA BAGA. A special strain developed by the West End truckers. Extra in quality, size and smoothness10	.20	.60	1.50

PEANUTS

6062 MAMMOTH BUSH. Plant these in your lightest soil as soon as oak buds have swelled out and be surprised at the crop that you will get. A secret of peanut culture is to cover the whole plant with Hydrated Lime when the nuts are setting.

Per pkt. \$.10; per lb. \$.45; per 10 lbs. \$3.50.

6064 WHITE SPANISH. A small peanut of extra fine quality. The surest cropper for this section.

Per pkt. \$.10; per lb. \$.30; per 10 lbs. \$2.10.

HERBS

No.		Pkt.	Oz.
1304	ANISE. Annual, for garnishing and flavoring	\$.10	\$.30
1315	CATNIP. Perennial. For seasoning and cats10	.50
1319	DILL. Annual. For dill pickles, soup and sauce....	.05	.15
1321	FENNELL, SWEET. Perennial. For flavoring and salad10	.30
1326	TRUE LAVENDER. Perennial. Use flowers for imparting perfume to linen10	.50
1327	MARJORAM, SWEET. Annual. For seasoning..	.10	.35
1329	ROSEMARY. Perennial. Use leaves for seasoning	.10	.45
1333	SAGE. Perennial. For seasoning10	.40
1335	SAVORY, SUMMER. Annual. For flavoring10	.40
1341	THYME. Perennial. For flavoring your turkey dressing, also for soups, stews, etc.10	.60

Can get any other kind of Herb you might want at short notice.

SPECIAL NOTICE—In filling orders of Garden Seeds received before April 1st, I will put in from one to five sample packages, depending on the size of your order. If you find any of these samples of merit, I would be glad to hear of it.

All the foregoing prices in this catalog are postage paid on Pkts., Ozs. and ¼ lbs. Prices by the lb. are net unless otherwise stated. See page 3 as to postage rates.

Cutchogue, N. Y.,
Dec. 1st, 1925.

Mr. Ralph W. Sterling,

Dear Sir:

Am picking Sterling Strain Sprouts now and find them very good. In fact, I have three good strains this year and find yours the best that I have.

Sincerely,

CARLTON E. DICKERSON

Germantown, Ohio
Nov. 14, 1925

Mr. Ralph W. Sterling,
Cutchogue, L. I., New York.

Dear Sir:

We had fine growing weather in this part of the country this last summer and some of those roots I received from you produced as many as 20 shoots to one root and I have seen smaller asparagus sell on market than what they were. They have suited me so well that I think I will place my order with you in the spring for about 7,000 more roots. I won't plant any other kind.

Yours truly,

FRANK C. ROHRER

FARM AND FIELD SEEDS

SEED POTATOES

Use 4 to 5 sacks to the acre.

My stock of Wisconsin Green Mountain Seed Potatoes are very fine. They are Certified and are the "Bill Spud" brand. Would be pleased to have you come look them over before ordering elsewhere.

My Cobblers will come in the Spring from Vermont and they will cost me a lot of money. They are choice Certified Seed and were grown up in the Northern part of Vermont State. Am pricing them just as low as I possibly can.

I sold 9 carloads of seed last Fall and delivered every sack that I took orders for. Hope to be around next Fall to take your order for 1927 but if you get a chance you can give me your order for 1927 at any time. The price will be right.

My own Home-Grown Seed was raised from new seed last year, nice potatoes, nicely sorted, grown from a field that yielded good for the season.

All the New Seed is Certified.

	Sack of 165
IRISH COBBLERS. Vermont grown. Very choice.	Pk. Bu. Lbs.
See above. Stock limited. Order early	\$1.25 \$4.25 \$10.00
GREEN MOUNTAIN. Best late. Wisconsin	Sack of 150 Lbs.
grown, "Bill Spud" brand. Certified. See above	1.20 4.00 9.50

GREEN MOUNTAIN. Home grown seed, grown on my own farms from new seed. See above. Market price.

GREEN MOUNTAIN. Home grown, second size. Market price.

The above prices are net cash. Time prices are a matter of correspondence.

SEED OATS

Use 2 to 4 bushels to the acre.

My Seed Oats are very heavy and therefore it takes a few more pounds to sow an acre than it does of the lighter kinds, but the returns are so much more that it pays well.

SCOTTISH CHIEF. The best Oat that we have ever been able to purchase for this section. Very heavy and prolific. Per pk. of 8 lbs., \$.60; per bu. of 32 lbs., \$1.95.

WOLVERINE. A new kind. Excellent variety for a cheaper oat. Pk., \$.50; Bu. of 32 lbs., \$1.75.

SEED OATS by the bag. A very heavy Seed Oat packed in 80-lb. bags. Michigan grown. Per bag, \$3.00.

If anyone wants to sow Oats for pasture or for plowing under, Seed Oats by the bag are the kind to use, but if you expect to thresh your crop use Scottish Chief or Wolverine. 2 or 3 extra bushels will pay for the extra cost of the seed.

SEED WHEAT

SPRING WHEAT. Marquis, the best Spring Wheat. Very prolific, early. Per pk. of 15 lbs., \$1.00; per bu. of 60 lbs., \$3.50.

WINTER WHEAT, for Fall Seeding. Leap's Prolific. The most prolific, hardy and satisfactory Wheat ever grown in this section. Red kernel, stiff straw, bald. This seed will be grown on our own farm from new stock seed last Fall. Carefully rogued and cleaned. Price on application.

SEED RYE

SPRING RYE, more suitable to sow in the Spring than the Rosen Rye. Fine seed. Per pk. of 14 lbs., \$.85; per bu. of 56 lbs., \$3.10.

SEED RYE FOR FALL SOWING. ROSEN RYE. This is the best and the cheapest in the end as it is re-cleaned and of high germination. Get my prices before ordering elsewhere.

VETCH and CANADA FIELD PEAS

WINTER VETCH. For Fall Sowing. Mix a little in with your Rye for a cover crop. We find that it pays. Price on application.

SPRING VETCH. For Sowing in the Spring for a cover crop to plow under for a late crop. Per lb., \$.12; 10 lbs. or more at \$.10 per lb. Mix with oats.

CANADA FIELD PEAS. For Sowing in Spring and early Summer for a cover crop to plow under for Cauliflower, Brussels Sprouts, etc. Both the Canada Field Peas and the Vetches are Legumes and add fertility to the soil. Inoculate the seed with Mulford Cultures if you are not sure they do well on your farm. Per 10 lbs., \$1.00; per bu. of 60 lbs., \$4.20. Use 1 bu. Peas and 1 bu. Oats to the acre.

SOJA or SOY BEANS

Have the best kind of Soy Beans for this section. Used for plowing under green to build up your soil, or for hay. Sow in May or June.

EARLY YELLOW. Quick maturing, very productive. Per 10 lbs., \$1.00; per bu. of 60 lbs., \$4.10.

COW PEAS

Used to improve the soil. Sow in May or June.

WHIP-POOR-WILL. The best kind for this section. Per 10 lbs., \$1.20; per bu. of 60 lbs., \$5.20.

Warning. Do not sow your Cow Peas, Soy Beans or Spring Vetch until your ground is warmed up a little. If sown too early they will fail to germinate, or if they do sprout, they will not thrive. They are also helped by inoculation.

SUDAN GRASS

If you have lost out on your Summer's Hay crop sow an acre of this and get a heavy crop of succulent, valuable fodder.

We find this the best Grass for Pasture that we have ever tried. Use 15 to 20 lbs. with 1 bu. of Oats, on one acre of ground. Sow after ground warms up on good soil and this acre will keep one cow in good condition all Summer. 2 acres will keep 2 cows and so on.

For Hay use 20 to 25 lbs. to the acre, broadcast, or 10 lbs. in drills and cultivate. Crops of 5 tons to the acre have been grown. Northern seed. Per lb., \$.15; 10 lbs. or more, at \$.12 per lb.; 50 lbs. for \$5.00.

COSSACK ALFALFA

The surest and best kind of Alfalfa to grow. Here are a few reasons:

"It is the hardiest Alfalfa known."

"A better soil builder than other Alfalfa."

"More drought resistant on account of the long tap root."

"Has a double root system, both branched and deep."

"Makes a finer quality hay."

"Will yield more hay per acre no matter what the weather conditions are."

"Freezing does not kill young plants. The branched roots keep them from heaving."

Use 10 to 15 lbs. to the acre. Inoculate the seed with Mulford Culture and sow on sweet soil. Lime will make your soil sweet. All our Alfalfa Seed is Northern grown. Per lb., \$.55; per 10 lbs. or more at \$.50 per lb.

GRIMM ALFALFA

This has been tried around here for the last few years and found to stand the Winter better than our Northwestern Alfalfa, but not quite so drought resistant. This seed comes from the Northwest, is over 99% pure and is Dodder free. 96% germination. Same can be said of the Cossack.

Per lb., \$.55; per 10 lbs. or more, at \$.49 per lb.

Inoculate your Alfalfa Seed with Mulford Culture.

BUCKWHEAT

The best thing to sow on stump land, does well in sour soil. Fine for bees and to smother out bad weeds and quack grass.

JAPANESE BUCKWHEAT. The best kind to use in this section. Very prolific. Very large grain. Per 10 lbs., \$.75; per bu. of 48 lbs., \$2.50.

RAPE SEED

DWARF ESSEX RAPE. Makes a wonderful growth for seeding down hen yards, hog or sheep pastures. Per lb., \$.18; per 10 lbs. or more, at \$.14 per lb.

Mix 10 lbs. Rape and 1 lb. Kale for your Duck Greens.

BARLEY

FANCY SIX ROW. Makes good pasture. Per 10 lbs., \$.50; per bu., \$2.25. Does not rust like oats.

GRASS, CLOVER and ALFALFA SEED

Prices liable to change without notice.

Terms strictly cash.

The Globe Brand is the very best grade of Grass, Clover and Alfalfa Seed on the market. I make my prices just as reasonable as is possible consistent with the quality. It is the very last fraction of 1% in purity that costs money. The best is what I am always looking for. I believe that it pays big returns, too, as it is truer in seeds than in anything else that "the best is none too good."

My Hay Mixture for one acre is 10 to 12 lbs. of Timothy, mixed with 6 to 8 lbs. Clover, part Red and part Alsike, or all Alsike if you prefer, and sow early in the Spring, alone, or with Oats, or in August and September. If sown in wheat, sow the Timothy in the Fall with the wheat, and the Clover in March or April following.

In sowing Timothy alone without Clover use 15 to 20 lbs. to the acre. If your land is sour and Grass and Clover does not do well as a rule, a little lime sown on top of the ground and harrowed in before sowing the seed would be a great help.

We do not handle foreign grown Clover Seed. All our Clover and Alfalfa Seed is grown in the U. S. A.

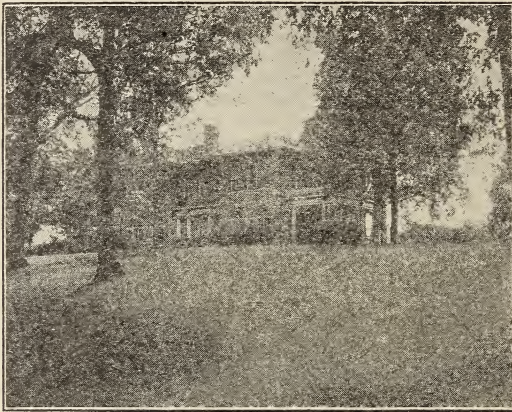
Special prices on 100 lbs. and over. Ask us about them.

5 Lbs.
& Over 1 Lb. to
Per Lb. 4 Lbs.

TIMOTHY. The brightest and purest seed on the market	\$.12	\$.14
RED CLOVER. Domestic, best grade. Northern grown40	.43
ALSIKE CLOVER. Does well where Red Clover sometimes fails. Best grade; domestic32	.35
ALFALFA. Finest Montana grown25	.28
ALFALFA, COSSACK. See page 3150	.55
ALFALFA GRIMM. Genuine. See page 31.....	.49	.55
SWEET CLOVER. White blooming, hulled, perennial18	.20
CRIMSON CLOVER. Sow in July and August. Price on application.		
WHITE CLOVER. Fine for lawn or pasture60	.65
RED TOP. Fancy re-cleaned. Very scarce and high. Fine for Lawns, stump ground, or anywhere the ground is sour. Best grade41	.45
KENTUCKY BLUE GRASS. Does best on sweet soil. Best grade. Fine for lawns43	.47
ORCHARD GRASS. Earliest pasture24	.26
GOLDEN MILLET. Sow in June for pasture or hay..	.09	.11

GRASS—*Continued*

HUNGARIAN GRASS. Easier to cure than the Golden	.08	.10
JAPANESE MILLET. Considered the best kind of all	.07	.10
SUDAN GRASS. Grows something like Sorghum. See page 3112	.15
STERLING PASTURE MIXTURE. My blend of the best kind of Grass and Clover Seed, suitable for growing for pasture. State if you do not want Orchard Grass in it as some do not like this grass. Contains some White Clover. Use 20 lbs. to the acre...	.32	.35



LAWN MAKING

Lawn making has been reduced to a science by the Department of Agriculture. Experiments have demonstrated that the stand-by of lawns in this country, where lawns can be made, is Kentucky Blue Grass; and that the best method of obtaining a Blue Grass lawn is to sow a mixture containing Red Top. The latter germinates more quickly, and helps make a thick lawn the first few years, but gradually gives way to the spreading blue grass. White clover is usually mixed in, where clover is not objectionable, because it helps thicken the early turf, and secretes nitrogen from the air, which helps the grass. Our grass seed is exactly what we represent, re-cleaned and free from weeds.

Loosen the soil in which a new lawn is to be made to a depth of at least five inches, and lighten it with humus or several inches of sand, compost or manure if it is heavy and inclined to bake. Apply fertilizer liberally, either Sheep Manure, Bone Meal, Vigoro or a commercial fertilizer.

GRASS—Continued

Sow in the early spring when cool weather and ample rainfall will insure complete germination and a good start for the seedlings before hot dry weather comes. If seeding must be delayed, special precautions must be taken to prevent the ground drying out. Early fall is a very desirable time to plant.

See that the seed is well covered. Rake it into a new seed bed and roll so that the soil is firmed over the seed. Where seed is sown on an old lawn always cover it with a top dressing of sand or soil and fertilizer. Seed thrown on the top of hard ground has no chance to grow and will merely wash off.

Use lime if you think soil is inclined to be sour. If sorrel comes in natural it is a sign of a lack of lime.

LAWN GRASS SEED

No.		5 Lbs. & Over 1 Lb. to Per Lb. 4 Lbs.	
	STERLING MIXED LAWN GRASS. I prepare this mixture myself from the highest grade Kentucky Blue Grass, Fancy Red Top and White Clover. This mixture has given the very best satisfaction throughout Long Island. Quick growing and permanent. 100 lb. lots at \$.42..	\$.44	\$.46
6145	FORDHOOK FINEST LAWN GRASS. Burpee's best. A mixture of many fine Grasses suitable for lawns and contains none that makes bunches and clumps. 25 lbs. or more at \$.42 per lb....	.44	.46
	CREeping BENTGRASS. <i>Agrostis Stolonifera</i> True. This is the very finest grade of the Bents and produces a weedless lawn, as it thrives on sour soil where weeds and other grasses will not grow	1.25	1.30
6149	SHADY NOOK. Where there is only partial shade the other Lawn Grasses are all right but where the shade is quite dense use this special mixture	.46	.48
	WHITE CLOVER. Very best grade60	.65
	FANCY RED TOP. Re-cleaned, Fancy41	.45
	KENTUCKY BLUE GRASS. Best grade....	.43	.47

For a good, permanent lawn, use 1 lb. lawn seed to 400 sq. feet., 80 to 100 lbs. to the acre. For reseeding an old or poor catch, use half that amount.

So. Coventry, Conn., Dec. 20th, 1925.

Mr. Ralph W. Sterling,
Cutchogue, N. Y.

Dear Sir:

Your Sterling Strain Bussels Sprouts were the best that I ever had. They were so good that I want you to save me 1 pound for next year.

Sincerely,

CARL FRANZ

VIGORO

A new product manufactured by Swift & Co., especially for Lawns, Shrubs, Flowers, Gardens and Trees.

It is odorless and clean. Highly concentrated. Packed in convenient sized bags.

In new seedings use 2 to 4 lbs. to 100 sq. ft. In fertilizing old lawns use 1 to 2 lbs. to 100 sq. ft. Always wet in thoroughly after application.

Small pamphlet describing Vigoro sent on request. A large illustrated pamphlet, "The Home Beautiful" comes packed in every bag.

25 lb. Bag, paper lined	\$1.75
50 lb. Bag, paper lined	3.00
100 lb. Bag, paper lined	5.00

Cash Price. F. O. B. Cutchogue Station or at the Farm.

SHEEP MANURE

Fine for Lawns, Gardens and Flower Beds. This is one of Swift & Co.'s products and is very high grade. A good application mixed in your Flower Garden Soil will show wonderful results.

10 lb. Bag	\$.60
25 lb. Bag	1.25
100 lb. Bag	3.50
500 lbs. (5 Bags)	15.00
Per Ton of 2000 lbs. (20 Bags)	50.00

BONE MEAL

One of the best fertilizers for Lawns, Roses and other Flowers. Also fine for top dressing hay fields. Swift's Brand, which means high grade. Analysis on request.

10 lb. Bag	\$.60
25 lb. Bag	1.25
100 lb. Bag	4.00
500 lbs. (5 Bags)	16.00
Per Ton of 2000 lbs. (20 Bags)	55.00

LIME

Ivory Brand Lime is the highest grade Hydrated Lime there is made. This is very fine for Lawns and Gardens, sweetening up the soil and making Plant Food available.

Ground Lime Stone is also good for this purpose, some authorities claiming that it is better for lawns than the Hydrated Lime.

Ivory Lime, per 10 lb. Bag	\$.25
Ivory Lime, per 50 lb. Bag85
Ivory Lime, per 500 lbs. (10 Bags)	7.50
Ivory Lime, per ton of 2000 lbs. (40 Bags)	27.50
Ground Limestone, per 10 lb. Bag20
Ground Limestone, per 100 lb. Bag	1.25
Ground Limestone, per ton of 2000 lbs.	22.00

HUMUS

This is one of the best Lawn Makers, especially for poor soils.

Mix 100 lbs. of this Dry Humus to a plot 20 by 20 and see the wonderful way the grass will grow where it is used. Also fine for spading in your flower beds, only use it in a larger proportion than above.

100 lb. Bag	\$ 2.00
Per ton of 2000 lbs. (20 Bags)	30.00

All the above prices are net cash. Time prices are a matter for correspondence.

FLOWER SEEDS

BURPEE'S AND DREER'S ANNUALS

No.		Pkt. $\frac{1}{4}$ Oz.	Oz.
1505	AGERATUM. Blue, fine for borders and beds	\$.10	\$.25
1689	ASTER. Queen of the Market. Earliest.		
	Mixed10	.40 \$1.25
1614	ASTER. Crego Giant Mixture. Very large flowers. Petals curled. 8 colors10	.40 1.25
1735	ASTER. Fordhook Favorite Mixture. Finest American types. Mixed10	.40 1.25
7788	ASTER. Burpee's American Beauty Collection. One of the largest and finest types. 1 pkt. each of the six colors illustrated in Burpee's Annual. The collection, \$.50.	.15	
1674	ASTER. California Giants. Newest kind. Very large, beautiful flowers25	
1470	ASTER. Dreer's Superb Late Branching. Dreer's finest mixture of 8 colors20	
1524	SWEET ALYSSUM. Little Gem. White. Free blooming. One of the best for beds and borders10	.20 .60
1549	ANTIRRHINUM or SNAPDRAGON. Half Dwarf. Fancy mixed colors. Fine10	
1719	ANTIRRHINUM. Giant Mixed. Burpee's 13 new Giants in mixture15	
1158	ANTIRRHINUM. Dreer's Super-Giant Snapdragon. 6 newest shades. Mixed20	
1719	BALSAM. Old fashioned Lady Slipper. Defiance Mixture of 9 shades and colors10	.30
1805	CALENDULA or SCOTCH MARIGOLD. Double flowers. A complete mixture10	.15
1809	CALLIOPSIS. Golden Wave. Bright Yellow with a dark brown center10	.25
1816	CANDYTUFT. Giant Hyacinth Flowered. Finest white. Fine for borders10	.25
1830	CARNATION. Dreer's Giant Marguerites. Early flowering, sweet, mixed15	.50

ANNUAL FLOWER SEEDS—*Continued*

No.		Pkt.	¼ Oz.	Oz.
1864	CELOSIA. Magnificent Plumed Cockscomb. Burpee's best mixed10	.30	
1852	COCKSCOMB. Dreer's Glasgow Prize. The old-fashioned flat, deep, red comb10		
1887	CENTAURIA. Double Cornflower. Blue10	.30	
1885	CENTAURIA. Double mixed. 6 colors, fine	.10	.25	
1900	CENTAURIA. Imperialis. Dreer's Royal Sweet Sultans. Sow early. Fine for cutting..	.10		
1942	COSMOS. Early Large Flowering. Mixed...	.10	.20	.60
2080	COSMOS. Dreer's Early Double Flowering. White, Pink and Rose, mixed. Will throw a good proportion of double flowers and will bloom early. Very beautiful20		
1935	CHRYSANTHEMUM. Dreer's Coronarium. Double mixed. A fine Annual for cutting. Sometimes called Painted Daisies10		
1994	DIANTHUS or CHINESE PINK. Hedde- wigii. Fine, large double mixed10	.35	
2055	ESCHSCHOLTZIA or CALIFORNIA POP- PY. Sunset Mixture. All the best kinds...	.10	.20	
2054	ESCHSCHOLTZIA. Vesuvianus. Bright scar- let or coppery red10	.30	
2139	LARKSPUR. Tall, double, dark blue10	.30	
2124	LARKSPUR. Burpee's Best Mixture. Tall...	.10	.25	
2940	LARKSPUR. Dreer's 6 lovely colors. In mix- ture. Tall, beautiful spikes10	.25	
2196	FOUR O'CLOCK. Tall mixed. All colors...	.05	.10	.25
2086	GAILLARDIA. Double Mixed. Blanket Flower10	.25	
2846	HELICHRYSUM or STRAWFLOWER. Mixed colors. Makes a beautiful Winter bouquet..	.10	.40	
2469	DREER'S EVERLASTING FLOWERS. 1 pkt. each of the 8 best varieties. The 8 pkts. \$.50, single pkts. \$.10.			
2118	KOCHIA or BURNING BUSH. Green bushes turning red in the Fall10	.20	

DREER'S MARIGOLDS

3084	ORANGE PRINCE. Dreer's Magnificent Deep Orange. Large free bloomer. Seed of this and of 3085 grown by a Specialist. Both are Tall African. 2½ ft. high15	.50	
3085	LEMON QUEEN. Immense double flowers of a lighter color than 3084.15	.50	
3093	GOLDEN BALL. Double Dwarf French Mari- gold. Rich Golden Yellow.10	.40	

ANNUAL FLOWER SEEDS—*Continued*

No.		Pkt.	¼ Oz.	Oz.
3094	LEMON BALL. Same as 3093 only Light Lemon Yellow. Both Densely double. About 12 inches high10	.40	
2170	AFRICAN. Double mixed, from Burpee10	.25	.60
2190	FRENCH MARIGOLD. Double, mixed. Dwarf10	.25	.60
2226	MIGNONETTE. White Pearl. The best White. Large sweet scented trusses10	.40	
3154	MIGNONETTE. Dreer's Red Goliath. Dreer's finest and largest Red15		
2354	NASTURTIUM. Tom Thumb, Gorgeous Mixture. Burpee's Best. All colors. ¼ lb., \$.4005	.05	.15
3110	NASTURTIUM. Tall Fordhook Favorites. Burpee's Best Giant Flowering. All colors. ¼ lb., \$.45. Lb. lot of either kind, \$1.25. Can get you the separate kinds of Burpee's Nasturtiums if you prefer. Any color.	.05	.05	.15
2513	PANSY. Burpee's Blend of Giant and Fancy types. Unsurpassed25	2.05	
3510	PANSY. Dreer's Royal Exhibition mixture. This is Dreer's finest mixture as to size, texture and colorings. Pkt.50		
2556	PETUNIA. Enchantress Mixture. Dwarf, all colors. One of the best mixtures for bedding10		
2567	PETUNIA. Burpee's Defiance. The largest flowering kind. Beautiful mixed colors25		
2539	PETUNIA. Elk's Purple. This is something special. Deep purple flowers of extra large size35		
2574	DOUBLE PETUNIA. Fordhook Fancy Fringed. One of the most beautiful mixtures of Petunias. All shades and colors. Seed very valuable. Small pkt.35		
3566	PETUNIA. Dreer's Rosy Morn. The most popular kind for Window Boxes, Hanging Baskets or bedding15		
3559	PETUNIA. Dreer's Balcony Petunias. 1 pkt. each of Dreer's 4 best kinds, Blue, Rose, White, Crimson, 60c, single pkts.20		
2581	PHLOX DRUMMONDI. Fordhook Finest Mixed. All of Burpee's finest in mixture. One of the finest flowers for Bed or Border ..	.10	.40	
3619	PHLOX DRUMMONDI. Dreer's Collection of 7 colors. Very beautiful. 1 pkt. of each 50c. Single pkts.10		
3696	POPPY. Dreer's Select Shirley. The very finest mixture of Single Poppies. Sow the seed very early in the Spring where you want them to grow. Not too deep10	.25	

ANNUAL FLOWER SEEDS—*Continued*

No.		Pkt.	¼ Oz.	Oz.
2644	POPPY. Burpee's Mixture of large Double Peony Flowered. Beautiful shades and colors	.10		.20
2642	POPPY. Double Carnation Flowered. Burpee's mixture of this most popular and beautiful sort. A wide range of colors	.10		.20
2659	PORTULACA. Double mixed. Brilliant mixture of many bright colors	.10		
2652	PORTULACA. Single mixed. Burpee's finest	.10		
3867	RICINUS or CASTOR OIL BEAN. Red Spire. Dreer's largest and most ornamental. Plant a few of these in your lawn and garden and they claim that the Ground Moles will disappear.	.10		
2707	SCABIOSA. Pin cushion Flower. Large Flowered Double Mixed. One of the best sorts for cut flowers	.10		.30
3936	SALVIA. America. Dreer's finest. Early flowering, very profuse blooming and about 2 ft. in height	.25		
3932	SALVIA. Bonfire. Brilliant scarlet spikes stand clear from the dark green foliage and just cover the plant which grows 2 ft. high .. Will have a fine lot of plants from both these kinds of seed. See page 53.	.15		1.00

BURPEE'S SWEET PEAS

None Better

3599	SWEET PEAS. The Burpee Blend. This is Burpee's finest mixture of all the best Orchid-flowered varieties. All colors and shades. ¼ lb., \$.75, 1 lb., \$2.00 Postpaid	.05	.10	.20
3600	SWEET PEAS. Mixture of Light Shades. For one who prefers all the light shades and none of the darker ones. Beautiful, large blossoms ¼ lb., \$.80, 1 lb. \$2.50 Postpaid.	.05	.10	.25
3601	SWEET PEAS. Burpee Novelty Mixture. Contains all the newest large Orchid flowering sorts. All shades and colors. ¼ lb., \$1.00...	.10	.10	.30
7321	SWEET PEA COLLECTION. One pkt. each of the six newest Orchid flowered Sweet Peas illustrated in color in Burpee's Catalog. Pink, Orange, Blue, Red and Rose. Enough for 10 or 15 ft. of row. Collection \$.75.			
7330	SWEET PEA COLLECTION. One pkt. each of Burpee's six best Sweet Peas. (Illustrated on the back cover of Burpee's annual). You should try one of these collections and have the finest there is. This will plant 20 ft. of row. Collection \$.50.			

ANNUAL FLOWER SEEDS—Continued

No.		Pkt.	¼ Oz.	Oz.
7340	SWEET PEA COLLECTION. Burpee's Best 12. One pkt. each of 12 of their best kinds. All different and all very beautiful. \$1.00 Post Paid.			
7310	SWEET PEA COLLECTION. Burpee's Sweet Sixteen Collection. One pkt. each of the most popular kinds. 16 pkts. in all. All different shades. This collection will plant a row 35 ft. long. \$1.00 Post Paid.			
4020	STOCKS. Improved large flowering 10 weeks. Mixed colors. Fine for bedding10		
2765	SUNFLOWER. Double Chrysanthemum flowered. Fine for border, or hedge10	.20	.50
2762	SUNFLOWER. Red. One of the best fancy..	.05	.15	.40
	SUNFLOWER. Large Russian. The largest of all. Per ¼ lb., \$.20; per lb., \$.30.....	.05	.05	.10
2776	VERBENA. Fordhook Famous. Mammoth, mixed. All colors. Fine for borders and Boxes10	.50	
2813	ZINNIA. Burpee's Giant Mammoth Mixture. Includes ten of the newest and best kinds...	.10	.30	
2812	ZINNIA. Burpee's New Cactus Flowered. Like a Cactus flowered Dahlia. All colors15	.60	
3834	ZINNIA. Burpee's Dahlia Flowered Mixture. Illustrated in color in Burpee's catalog15	.50	
4520	ZINNIA. Dreer's Special Strain of Giant Double Zinnias. A wonderful mixture of 7 beautiful colors. Some flowers measure 5 or 6 inches across, about 3 ft. high15	.40	

All the above Flower Seeds are priced Post Paid. Burpee and Dreer puts out many other kinds and varieties that I have not listed. Also many collections of flower seeds. If in need of any kind that I have not listed let me know and I will get it for you and may be able to save you time and money. See following pages for Perennial and Vine Seeds, and Plants.

PERENNIAL FLOWERS

Perennial Flower Seeds may be sown in February or March indoors and transplanted or may be sown where you want them later and thinned out. They will bloom the following year. If you want them to bloom this year buy our Perennial Plants listed on pages 54, 55.

No.		Pkt.	¼ Oz.
3828	HOLLYHOCKS. Single, mixed colors. Very free blooming	\$.10	\$.40
3822	HOLLYHOCKS. Double Mixed. Very beautiful10	.45
3787	FOXGLOVE or DIGITALIS. Mixed colors. Beautiful tall spikes of white, pink, rose, yellow and purple10	.45

1206	AQUILEGIA or COLUMBINE. Dreer's Long Pkg. $\frac{1}{4}$ Oz. Spurred Hybrids, Mixed. A wonderful mixture. 50c per 1-8 oz.15	
1600	BELLIS or ENGLISH DAISY. A small double flowering daisy. Blooms early. Dreer's Double mixed	.10	
3768	COREOPSIS. Large yellow, free blooming. Fine for cutting. Blooms in late Spring and Summer...	.10	.30
1740	CAMPANULA. Cup and Saucer Canterbury Bells. Dreer's Finest Mixed. Beautiful10	
3733	CAMPANULA. Bellflowers. Burpee's Best Single Mixed10	
3734	CAMPANULA. Burpee's Double Mixed Bellflowers	.10	
1948	DAISY. Dreer's Alaska Shasta Daisy. Large blooms 5 inches across, pure glistening white25	
2240	DELPHINIUM. Dreer's Gold Medal Hybrids. One of the finest mixtures ever offered. 2 ft. spikes. Different shades of blue15	.60
2221	DELPHINIUM BELLAMOSUM. Rich deep blue. Free blooming25	
2334	DIANTHUS or HARDY GARDEN PINK. All-woodii. Dreer's new race of Hardy Pinks. Blossoms continuously. Very sweet and beautiful. Seed comes from England. 25 seeds35	
3756	CARNATION. Burpee's Chabaud Mixture. One of the most beautiful of all Hardy Pinks15	
2510	GAILLARDIA. Dreer's Grandiflora Superb Mixed. Grows 2 ft. high. Fine for cutting10	.30
3807	BABY'S BREATH. Single. Fine for bouquets...	.10	.30
3799	BABY'S BREATH. Double. Very beautiful, and one of the best for cutting25	
3812	HIBISCUS or MARSHMALLOW. Burpee's Giant Mallow Marvels. Blooms enormous, canes 4 to 6 ft. high10	.40
3845	LUPINES. Blue. The best color10	.25
3060	LUPINES. Dreer's New Hybrid Mixed. All colors, some of them new and unusual25	
3231	MYOSOTIS or FORGET-ME-NOT. Dreer's Alpestris Royal Blue. The finest dark blue. 9 inches tall10	
3851	ORIENTAL POPPY. Orientale. The most showy of all10	.45
3941	SCABIOSA. Caucasicca or BLUE BONNET. Dreer's best Perennial. Fine for cutting and for border. 3 ft.25	
4296	SWEET WILLIAM. Dreer's Giant Double Mixed. New15	
4282	SWEET WILLIAM. Dreer's Newport Pink. The newest shade of pink. Fine for cutting or bedding	.15	

Can get any other Perennial that you might want at very short notice.

Climbing Flowers and Vines

No.		Pkt.	¼ Oz.	Oz.
3021	MORNING GLORIES. Burpee's Best Mixture. A quick growing vine and free blooming. All colors	\$.05	\$.10	\$.25
2880	MORNING GLORIES. Dreer's Mixed Imperial Japanese or Emperor. Largest and finest of all. All colors and kinds of markings05	.10	.30
2989	MOONFLOWER. Burpee's Mixture of all kinds and colors. They bloom at night and on dull days10	.20	.40
2160	CYPRESS VINE. Fern-like foliage and masses of beautiful, star-shaped flowers. Dreer's mixed10	.20	.50
2158	CARDINAL CLIMBER. Dreer's best Annual climber. Brilliant Cardinal flowers15		
2974	KUDZU VINE. A Perennial Climber of very rapid growth. Purple flowers10		
2927	DOLICHUS or HYACINTH BEAN. Darkness. Stems and leaves are purplish red. Flowers like Wisteria10		
3708	BOSTON IVY (Ampelopsis Veitchii). The best Perennial climber for chimneys, walls or sides of houses10	.25	
8022	CINNAMON VINE. Grows from bulbs. Nice green foliage and small white flowers. Delicate fragrance. Each10		

PLANT, ROOT AND BULB DEPARTMENT

Plants are one of my specialties, as I raise them in Hot Beds, Cold Frames and in the Field. Customers are invited to come and look my stocks over before buying. My prices are as low as I can make them, consistent with the quality. I always use the best quality seed to be procured in my plant beds, and spare no expense and care to have them A No. 1 in every respect.

50 plants of one kind will be sold at 100 rates, 500 of one kind at 1,000 rates.

In shipping plants, the roots are kept quite moist, and packed in wet moss, thus insuring their safe arrival. We use the utmost pains to pack and mark our plants so they will arrive at their destination in the very best shape. If they do not, please advise *at once*. We are always ready and willing to make any mistakes or errors right, if it is possible to do so, to the value of the original amount.

We price our plants just as cheaply as possible and transportation charges are not figured in. So if you want your plants sent by Parcel Post see instructions below each kind listed. If no postage is added to your order we will ship the order, Postage C. O. D. Large orders should go by Express, collect.



STRAWBERRY PLANTS

Sterling Quality

My Strawberry Plants are raised on fresh ground, well fertilized and carefully taken care of. They are well rooted, healthy and true to name. We have tried out many, many kinds and find that only a few kinds seem to do well in this section. Such a kind is the Premier. This kind comes early and stays late, yields heavy and keeps its size well. The Corsican and Rykeman are both very popular for mid-season, being large, sweet and very prolific. We have yet to find an extra good late berry for this section. Monroe holds up pretty well, Gandy is good, but has its faults. We were well pleased with Delicious last year. Chesapeake and Aroma are very shy bearers with us.

Price List of Sterling's Strawberry Plants

	25	100	300	1000
CAMPBELL'S EARLY. Matures its crop very early. The best extra early kind we have found	\$.25	\$.80	\$ 2.10	\$ 6.00
PREMIER or HOWARD, NO. 17. The best kind I have ever tried for table use or for market. Begins to ripen early; large, long red berries and keeps right on through the longest season of any berry found yet, and keeps its size and color well, right up to the end of the season. Everybody is praising Premier and there's a reason. If you can only have one kind this is the kind to have..	.30	.90	2.40	6.50
DR. BURRILL. An Improved Senator Dunlap-Very prolific, dark red, large, good flavored berries. Makes plenty of plants and always yields well30	.90	2.30	6.00
RYKEMAN. Considered by some the same as Corsican, and by others even better than that fine stand-by. This is true stock that I secured from an enthusiastic Rykeman grower30	.90	2.40	7.00
CORSICAN. One of the sweetest berries grown. Large plants, leaves and berries, fruit stems long and stiff. Very productive30	.90	2.40	7.00
JUDITH. Fine quality, almost equal to Marshall30	.90	2.40	7.00
BIG JOE. Mid-season, large berries, firm and productive. Runs small towards the end of the season30	.90	2.40	6.50
GIBSON. Very productive. Popular in some places30	.90	2.40	7.00
EATON. Called by some the best of the newer kinds. Vigorous grower, productive, large and very red30	.90	2.40	7.00
DELICIOUS. Proved the best of the newer sorts for us last year. Sweet, good color and prolific. Midseason to late40	1.00	2.75	
COOPER. A good sort in some sections. Large and fairly good flavor30	.90	2.40	7.00
WILLIAM BELT. Always considered a high quality berry. Where it does well it certainly is fine, but it sometimes blights, rusts and gets knotty30	.90	2.40	7.00
MONROE. An improved Brandywine. Very dark red40	1.00		

STRAWBERRY PLANTS—Continued

	25	100	300	1000
MARSHAL. This is the straight Hope Farm Strain, direct from Mr. Collingwood last year. They are considered the best quality berry there is, but not a real heavy yielding berry. Dark red40	1.25	3.00	9.00
CHESAPEAKE. One of the best for late where it will do well. We never had it do well for us yet40	1.25		
GANDY. The standard for late. Sour and firm. One of the best for shipping. Does not yield heavy30	1.00	2.90	
BIG LATE. This was a disappointment to us as it yielded nothing much but leaves for us30	.90	2.40	

Have tried to list the above kinds in order of ripening. All the kinds listed have perfect blossoms except Big Late, which has an imperfect blossom and needs another kind near it to pollenize the blossoms and make perfect fruit.

Have made the descriptions for these varieties as truthful as it is possible to do with such a variable fruit as the Strawberry. You have to try out the varieties for yourself to find what does well in your soil. The Premier is the only kind that I have found yet that does well for everybody.

EVERBEARING STRAWBERRY PLANTS

CHAMPION. Perfect blossom, very sweet berry and the best Everbearer that has been produced so far. Set the plants this Spring, keep all blossoms pinched off until July and then thin the blossoms out from 40% to 60% right through the rest of the season. You will then have good-sized berries of fine flavor right up to freezing weather and another crop the following Spring. Plants per doz., \$.40; per 3 doz., \$1.00; per 100, \$2.00.

All prices quoted above are net at the farm. If you want your Strawberry Plants sent by Parcel Post add 8c per 25, 12c per 100, 18c per 200, 25c per 300; quantities over that should be sent Postage C. O. D.

Gaylordsville, Conn., April 29th, 1924.

Mr. Ralph W. Sterling,

Cutchogue, N. Y.

Dear Sir:—The Strawberry Plants received April 28th in fine condition many thanks for prompt delivery.

MRS. JENNIE F. DURYEA

Sag Harbor, N. Y.,
Feb. 14, 1925.

Mr. Ralph W. Sterling,

Cutchogue, N. Y.

My Dear Sir:

Your seeds have always given me very good satisfaction. Also the potted tomato plants you sold me did wonderfully well. Will you have any for sale this season?

Sincerely yours,

CHARLES F. HALLOCK

Strawberry Plants in August, September and October

We will have about all the kinds listed and some new kinds as well for Summer and Fall setting, from our new bed. New plants, well rooted and true to name.

The price for Summer and Fall is higher than Spring prices, but I try to make the price as reasonable as possible and I think you will grant that, when you consider that one, two or sometimes three smaller plants have to be thrown away and wasted in order to get one good, strong, well-rooted plant.

Write for prices.

RASPBERRY PLANTS

CUTHBERT. One of the best for this section. Prolific, large, sweet berries. Makes plenty of plants. Per doz., \$1.00; per 2 doz., \$1.75; per 3 doz., \$2.25; \$5.00 per 100.

ST. REGIS. Everbearing. The best everbearer yet found. Price same as Cuthbert.

RHUBARB ROOTS

OLD FASHIONED PIE PLANT. Large stalks with reddish tinge. Per root, \$.10; per doz., \$1.00; per 2 doz., \$1.75.

If you want Raspberry Plants and Rhubarb Roots sent by Parcel Post add 12c per doz. to above prices.

ASPARAGUS ROOTS

One year old Roots. Grown from High-Priced, Pedigree Seed, the best there is. These roots are large, healthy and ready to grow:

	Doz.	100	1000
WASHINGTON. Grown from Pedigree Seed that was produced by the originator. Very rust-resistant. Grows quite tall before branching so it is suitable for cutting green. Quality fine, very productive. Large stalks	\$.20	\$1.25	\$10.00
MARY WASHINGTON. From Pedigree Seed. originator's stock. Prof. Norton claims that this kind is the largest, most productive and finest flavored Asparagus yet developed. Very high branching which makes it the best for cutting green. Rust-resistant25	1.50	13.00
MARY WASHINGTON. From Re-selected Pedigree Seed. The originator charged \$5.00 per lb. more for this seed than for the Pedigree Mary It takes about 5,000 roots to set 1 acre. \$1.00 per 1,000 less on 5,000 lots or more.	.30	1.75	15.00

2-YEAR-OLD ASPARAGUS ROOTS

You can set these roots out and cut asparagus next year.

Doz. 100 1000

WASHINGTON. From the same Pedigreed strain of seed as the one-year old roots. Very large roots \$.25 \$1.50 \$14.00

MARTHA WASHINGTON. The most Blight Resistant of any kind yet developed. This seed came from Prescott of Concord, Mass. He raises over 30 acres of Grass for the Boston market and considers the Martha as his best kind, but he has no Mary. Very large roots30 2.00 17.50

All expert gardeners and farmers will tell you that one year old Asparagus Roots are the best kind to set out for field culture. One year old roots recover quickly from the shock of transplanting and are not badly cut and broken. Set out Sterling Grown Roots this year, about six inches below the surface of the ground, cover with two inches of soil. As the plants grow up fill trench with well rotted manure and more soil, and some good garden fertilizer on top of that. Do not put fertilizer next to any kind of root or plant if you want them to live.

If properly taken care of you can cut your bed the following Spring until June 1st, letting it grow up after that and giving it more manure and fertilizer. The second year from setting cut till July 1st, always feeding it well after letting it grow up.

COLD FRAME PLANTS

Hardy, Well-Rooted Plants from Best Strains of Seed.

CABBAGE PLANTS

	Doz.	100	1000
GOLDEN ACRE. New, earliest flat head, fine.....	\$.20	\$1.00	
EXTRA EARLY JERSEY WAKEFIELD. Earliest pointed heads15	.60	\$5.00
EARLY CHARLESTON WAKEFIELD. Very large pointed heads15	.60	5.00
EARLY SUMMER. Large flat heads. These three make a fine succession15	.60	5.00
COPENHAGEN MARKET. The earliest flat head of good size15	.60	5.00

MAGGOT CONTROL

You can raise fine Cabbage without damage from Maggots if you will follow the directions given below:

To 5 gallons of water add ½ oz. Formaldehyde. After mixing thoroughly, pour about a tablespoonful around each plant once a week. Begin to do this by the last of May or as soon as you see the Maggot Fly.

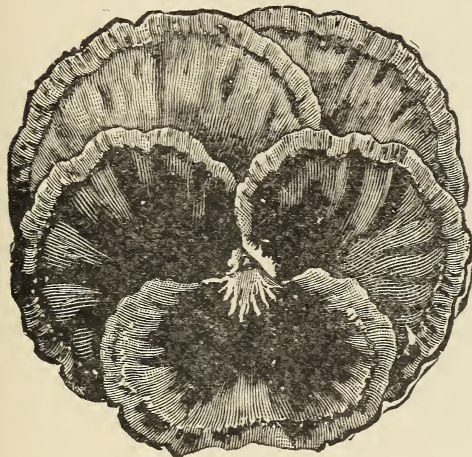
OR

Add 1 oz. Corrosive Sublimate to 8 gallons water. Put ½ cupful to each plant once a week at the same time as above.

The poisons may be purchased at any drug store.

LETTUCE PLANTS

	Doz.	25	100
BURPEE'S WAYAHEAD. Quick heading. Good quality	\$.15	\$.25	\$.75
NEW YORK or WONDERFUL. Large heads of finest quality15	.25	.75
BIG BOSTON. Sure heading. Fine15	.25	.75
DREER'S UNRIVALLED. A fine head lettuce....	.20	.30	1.00
MATCHLESS. The newest and best kind. Sweet, tender and long standing25		

*Burpee's Giant*

Pansy

Plants

Well Hardened
Wintered Over
Plants from Bur-
pee's and Steele's
Best Kinds.

We have a fine mixture of Burpee's and Steele's best and newest kinds. The new Henna Red, Yellow, White and Orchid flowered kinds. If you can come look them over and pick out just the colors that you want, or, write me the colors you prefer, I am sure that you will be pleased with Sterling's Pansy Plants. These plants are not all exhausted from blossoming too long. You will get the full benefit of all they have. Mix some well rotted manure with your soil for best results. Well rooted stocky plants at 5c each, 50c per doz., \$3.00 per 100, postpaid. A slight reduction when you get them at the Farm.

HOT BED PLANTS

Ready in May and June.

TOMATO PLANTS

Transplanted, well-hardened, stocky plants. Grown from Livingston's and Burpee's Selected Seed.

	Doz.	3 Doz.	100
SUNNYBROOK EARLIANNA. Burpee's best strain. Earliest	\$.25	\$.65	\$ 1.50
RICE'S SELECTED EARLIANA. A special strain for a special trade. Pronounced the "Perfect Earliana"40	1.00	2.50
CHALK'S EARLY JEWEL. The largest, smoothest and finest flavored extra early, bright red Tomato25	.65	1.50
JOHN BAER. The most popular early sort. Large, fine flavored, and very productive25	.65	1.50
BONNY BEST. Very productive, early. Not quite so large as John Baer, but smooth and sweet....	.25	.65	1.50
PONDEROSA. Very large. Fine flavored, meaty and one of the best for slicing25	.70	1.70
LIVINGSTON'S STONE. One of the best for table, canning or market. Very solid, smooth and fine quality. The most popular kind25	.65	1.50
LIVINGSTON'S GLOBE. Prolific and very Blight-resistant. Firm. A good shipper25	.65	1.50
RED HEAD. Bright Scarlet fruit. Early; firm. A good shipper and a kind that seems to suit Long Island soils25	.65	1.50
OXHEART, from Livingston. The best new sort that I have tried in many years. Large, firm, very meaty and deep as they are broad. Most of them come true oxheart in shape40		
CLARK SPECIAL. Type B. The kind that has given such fine satisfaction. An improved Stone. Very choice, large25	.65	1.50
TRUCKERS FAVORITE. The best purple fleshed kind. Smooth, solid and the very best in quality. Selected, Fordhook grown seed25	.65	1.50
BURPEE'S MATCHLESS. Burpee calls this the very best for home use or for market. Large, smooth. Bright red. Fine shipper25	.65	1.50
NEW SELF PRUNING TOMATO. Burpee's latest production. This Tomato sends out side shoots or laterals without special pruning, and makes a very stocky, compact growth. Try a dozen.....	.40		
BURPEE'S DWARF GIANT. Stocky, tree-shaped plants with large, fine flavored fruit25	.70	1.75
GOLDEN PONDEROSA. Large yellow and of fine flavor. Dreer's selected strain40		

TOMATO PLANTS—*Continued*

YELLOW PEAR SHAPED. Small fruit fine for preserves. Very prolific Doz. 3 Doz. 100
 .30
 Potted Plants in the early sorts. Large, stocky plants. Earliana, Chalk's Early Jewel, John Baer and Red Head. 5c each straight. Rice's Earliana 10c each.

Any of the Main-Crop, Early and Mid-season kinds at \$10.00 per 1,000. Order early. All transplanted once.

Special price for late sown plants, not transplanted, for the late settings, \$4.00 per 1000.

Add 7 cents per dozen, 12 cents per 3 dozen and 20 cents per 100 to your order if you want them by Parcel Post.

PEPPER PLANTS

Well Hardened. Strong Plants.

	Doz.	100
HARRIS' EARLY GIANT. Very large, productive, sweet and early. Earlier and larger than Ruby King.....	\$.25	\$1.75
NEAPOLITAN. Earliest large sweet Pepper. Prolific	.20	1.50
BURPEE'S RUBY KING. One of the sweetest large Peppers20	1.50
SWEETMEAT GLORY. Burpee's Pimiento. Pointed, sweet. Thick fleshed20	1.50
CHINESE GIANT. Largest of all, most popular20	1.50
BURPEE'S NEW SUNNYBROOK. The sweetest Pepper of them all. Small but very thick fleshed. Very popular	.25	1.75
LARGE BELL or BULL NOSE. Rather warm20	1.50
LONG RED CAYENNE. Hot. Very prolific20	1.50
CORAL GEM BOUQUET. Small, hot. Very ornamental	.25	

Add 7 cents per dozen, 12 cents per 100 to above prices if you want them sent by Parcel Post.

EGG PLANT PLANTS

Transplanted, Well Rooted and Hardened

	3	Doz.	Doz.
IMPROVED NEW YORK SPINELESS. Large purple..	\$.50	\$1.25	
BURPEE'S BLACK BEAUTY. Large, early, prolific....	.50	1.25	

Add 8 cents per dozen, 15 cents per 3 dozen, if you want these plants sent by Parcel Post.

POTTED EGG PLANTS at 10c each. Large plants.

SWEET POTATO PLANTS



		Doz.	100	300	1000
YELLOW JERSEY. Productive	\$.15	\$.70	\$1.80	\$5.00	
RED JERSEY. Extra quality15	.70	1.80	5.00	
PORTO RICO YAM. Large, fine for baking..	.15	.70	1.80	5.00	

Add 7 cents per doz., 12 cents per 100, 20 cents per 300, 40 cents per 1,000 if you want these sent by Parcel Post.

FLOWERING PLANTS—ANNUAL

Grown from Burpee's and Dreer's Seed. The Best Seed obtainable.
See Flower Seeds for further descriptions.

		Doz.	3 Doz.	100
ASTER. Queen of the Market. Mixed colors. Earliest	\$.40	\$1.00	\$2.50	
ASTER. Dreer's Superb Late Branching40	1.00	2.50	
ASTER. Crego Giants. Curled petals. All colors40	1.00	2.50	
ASTER. Fordhook Favorites. Burpee's mixture of all kinds and colors. Fine40	1.00	2.50	
COSMOS. Early. Double Flowered or Crested. Crimson, Pink and White. Mixed. One of the prettiest of the Fall Flowers50	1.25	3.00	
COSMOS. Single. Large Early Flowering. Mixed colors30	.75	2.00	
CENTAURIA or DOUBLE CORNFLOWER. Either blue or mixed colors40	1.00	2.50	
CARNATION and DIANTHUS. Best mixtures from Burpee and Dreer40	1.00	2.50	
LARKSPUR. Tall Double Stock Flowered. Rose, White, Sky-blue and Dark blue, mixed.....	.40	1.00	2.50	

FLOWERING PLANTS—*Continued*

	Doz.	25	100
MARIGOLD. Tall African. Orange Prince. Large, fine. A free bloomer. Dreer's Special40	1.00	2.50
MARIGOLD. Dwarf French. (Golden Ball). Fine for borders. Dreer's Special40	1.00	2.50
MARIGOLD. Tall African. Lemon Queen. A lighter shade than the Orange Prince. Dreer's Special40	1.00	2.50
MARIGOLD. Dwarf French. Lemon Ball. Lighter than the Golden Ball, but equally as fine40	1.00	2.50
PETUNIA. Will have a fine lot of all sorts listed under the Seed Department. Fine for Window Boxes, Hanging Baskets or for bedding. Order whatever kind that you want40	1.00	2.50
PHLOX DRUMMONDII. Best mixed colors. Very free in blooming. Fine for bedding40	1.00	2.50
SNAPDRAGONS. Dreer's Super Giant Mixture...	.50		
SNAPDRAGONS. Burpee's finest mixture. Half dwarf40	1.00	2.50
STRAWFLOWERS or EVERLASTINGS. Finest Mixed. Pick before fully opened and keep for Winter40	1.00	2.50
SALVIA. America. The freest blooming sort. Very fine for bed or border50	1.30	3.00
SALVIA. Bonfire. Makes a compact bush 2 ft. high and 2 ft. across. The brilliant scarlet flowers completely cover the plant50	1.30	3.00
SALVIA. Farinacia. The best Blue Salvia. Fine light blue flowers borne on long spikes50		
SALVIA PLANTS. All kinds. Potted extra large plants. Each 10c	1.00		
STOCKS. Dreer's Imp. Large Flowering 10 weeks. All colors. Most popular for bedding...	.40	1.00	
ZINNIA. Best Dahlia, Cactus and Giant Flowered sorts. Order whichever you want40	1.00	2.50

Flower Plants by Parcel Post: Add 8 cents per doz., 15 cents per 3 doz., to above prices, if you want your plants sent by Parcel Post.

GERANIUMS

Will have a fine assortment of Potted Geraniums from Dreer and Wood Bros., the two best places to secure the finest plants for bedding.

These are the four best kinds:

S. A. NUTT. Rich dark crimson.

BEAUTE POITEVINE. Finest salmon pink.

MME. RECAMIER. Pure white.

ALPHONSE RICCARD. Bright vermilion scarlet.

25c each, \$3.00 per doz. Postage extra.

BULBS FOR SUMMER AND FALL BLOOMING

- GLADIOLA BULBS. Choice Mixed. Large sized bulbs. All the most popular kinds in mixture. 3 for 15c, 60c per doz., \$4.00 per 100. Postpaid.
- GLADIOLA BULBS. Dreer's Gold Medal Mixture. A wonderful diversity of color. By far the finest mixture ever offered at this price. 6c each, 65c per doz, \$5.00 per 100. Postpaid.
- GLADIOLA BULBS. Burpee's Best Mixed. A well balanced assortment of the leading colors. 6c each, 6 for 35c, 60c per doz., \$3.75 per 100. Postpaid.
- GLADIOLA BULBS by name. Send us a list of what you want and we will gladly get them for you and save you money in the bargain.
- DAHLIA BULBS. Fine mixed. All shades and colors. 3 for 35c, Collection of 12 bulbs for \$1.00. Postpaid.
- DAHLIA BULBS. Named varieties. Send us a list of what you want and we can get them for you. Dreer is headquarters for the very finest Dahlia Bulbs. I can save you money on your orders.
- CANNA BULBS. King Humbert. The most popular of all Cannas. Orange Scarlet flowers and large Bronze foliage. 20c each, \$2.00 per doz. Postpaid.
- CANNA BULBS. Yellow King Humbert. Yellow Blossoms, Green. Leaves with once in a while a revert to the Bronze-leaved parent. 4½ ft. 20c each, \$2.00 per doz. Postpaid.

BULBS FOR FALL PLANTING

Will have a full supply of the following in the Fall, which is the proper time to set these Bulbs and Roots:

- IRIS, both German and Japanese.
- PEONIES. Six of the finest kinds.
- HARDY PHLOX. Six of the best kinds of this beautiful flower.
- HYACINTH, CROCUS, NARCISSUS and TULIPS for Spring flowers.

Can supply you with the IRIS, PEONIES and PHLOX in the Spring if you want to take a chance of their living.

Perennials

These plants are grown from seed sown last Summer and Fall in the field and in frames. They are grown from the best seed procurable, Dreer's and Burpee's, and the most popular sorts. They should bloom this year if set in good season. Take care of them and they will bloom for many years. Dig the bed deep, enrich with well rotted manure, keep clean and give protection in the Winter. That is all that is necessary. Nice plants.

- | | |
|--|---------------|
| | Each Doz. |
| AQUILEGIA or COLUMBINE. Long-spurred Hybrids.
Beautiful in color and variety. Blossoms in June.... | \$.10 \$.75 |
| CAMPANULA or BELLFLOWER. These are really a
Biennial but will seed themselves if kept clean. One of
the most beautiful of garden flowers. All colors, single | .10 .75 |

PERENNIALS—*Continued*

CAMPANULA. Double Bellflower, mixed colors10	.75
CANTERBURY BELLS. True Cup and Saucer. Blue..	.10	.75
BELLIS or DOUBLE ENGLISH DAISY. A pretty little flower in different shades of Rose and Red. Also White	.05	.40
FOXGLOVE or DIGITALIS. Large spikes of beautiful bell-like flowers. Large plants15	.80
DELPHINIUM or HARDY LARKSPUR. Deep Blue or different shades of blue mixed as you prefer. Nice plants10	.75
HOLLYHOCK or ALTHEA. Single mixed colors. Free blooming10	.75
HOLLYHOCK. Double mixed. Very beautiful double flowers10	.75
LUPINES. Beautiful spikes of white, rose and blue. One of the best for cut flowers. Field grown10	.75
SWEET WILLIAMS. Either Single or Double mixed. Fine10	.75
ORIENTAL POPPY. The most showy of all Perennials. Large deep red flowers. Nice plants10	.75
GAILLARDIA or BLANKET FLOWER. Beautiful large flowers with yellow tips and crimson centers10	.75
PANSY PLANTS. All colors. With protection these have been kept 2 and 3 years05	.50
Postage on Perennials, 12c per dozen extra.		

CHRYSANTHEMUMS. We had a wonderful exhibit of these beautiful flowers in our hot-house last Fall. Many who saw them engaged plants for this Spring setting. Will have the following colors potted up and will sell them at 20c and 25c each according to variety:

White, Pink, Golden Bronze, and Yellow at 20c each.

Very large blossoms in White, Pink and Yellow at 25c each.

These varieties are not all perfectly hardy so they must have some protection through the Winter or kept in a cool storage place.

TREES, SHRUBS AND GRAPE VINES

Will have a good assortment of Evergreen Trees for your selection in the Spring and will price them very reasonable as to size and quality. Will set them out for any one within a radius of 10 or 15 miles. Otherwise they will be sold with a good big ball of soil and carefully burlapped. The setting out will be an extra charge.

FRUIT TREES. Will have many of the best kinds that you may want. We get them from one of the best growers in the state and we are quite sure they are true to name and of the best quality.

GRAPE VINES. The 8 best kinds, according to Mr. E. S. Miller, the Grape Wizard of Wading River. Good two-year old vines.

CONCORD. Most popular purple	Each	\$.25
NIAGARA. Best White30

GRAPE VINES—Continued

LINDLEY. The sweetest of all. Red30
DELAWARE. Light Red. Very fine40
McKINLEY. Large White. Very sweet60
BRIGHTON. Reddish Purple. Early65
AGAWAM. Large Red of finest flavor30
CAMPBELL'S EARLY. The best early grape50

Add 10 cents extra if you want one vine sent by parcel post.
15 cents for three.

ROSE BUSHES. We get our Rose Bushes from Dreer. These bushes are the best money can buy. A very large assortment of Hybrid Hardy Tea Roses, new sorts and older, most popular kinds. The Dreer Dozen Hardy Everblooming Hybrid-Tea Roses are wonderful. Then there are the French Hybrid Tea, the Irish Hybrid Tea, the California Hybrid Tea, the Hybrid Perpetual Roses, The Baby Ramblers, all sorts and colors, and many other kinds. Secured on order. Also a list of 25 kinds of Rambler and Climbing Roses.

We keep in stock a good supply of the following from another grower: Each

DOROTHY PERKINS. One of the best Hardy Ramblers....	\$.50
CRIMSON RAMBLER. The most popular climber50

FIELD GROWN PLANTS

Ready from June 20th to August 20th approximately.

All my plants are raised on fresh ground and the very best strains of seed are always used. In fact the same seed as I use in my own fields.

BRUSSELS SPROUT PLANTS

The seed is treated for Black Stem, Blackleg, etc. and you are thus assured of strong, healthy plants free from disease. Plants are raised on fresh ground free from disease.

	Doz.	100	1000
STERLING STRAIN. From seed raised especially for my own critical trade. See testimonials in preceding pages		\$.15	\$.60 \$4.00

Price by the thousand is liable to change, depending on the season.

CAULIFLOWER PLANTS

My seed is treated with the hot-water treatment, insuring against Black Stem, Blackleg and some say, against Blight. Plants raised on fresh, disease-free ground.

	Doz.	100	1000
KROEMER'S LARGE EARLY ERFURT. Large, snow-white heads. One of the best for main crop		\$.15	\$.60 \$4.00
KROEMER'S EXTRA EARLY SNOWBALL. Mr. Kroemer calls this the best Snowball to grow for early or late crops15	.60 4.00

Price by the thousand is liable to change without notice.

CELERY PLANTS



Fordhook

Ready in July and August. Grown on fresh ground from the best seed.

FORDHOOK or EMPEROR. From Burpee's Seed. This new celery has given fine satisfaction wherever tried. Dwarf type, stocky, crisp and of the finest nutty flavor. Large heart.

Per doz. \$.15
 Per 10060
 Per 1000 5.00

GOLDEN PLUME. Livingston's Strain. A new variety, said to be one of the finest for second early or for late storing. Grows strong, healthy, large plants of extra quality. Blight proof. Seed \$3.00 per oz.

Per doz. \$.20
 Per 10080
 Per 1000 6.00

	Doz.	100	1000
WHITE PLUME. Self blanching. Best for extra early	\$.15	\$.50	\$ 4.00
GOLDEN SELF-BLANCHING. Burpee's American Grown Seed. Fine flavor. Dwarf type. Second early15	.50	4.00
HENDERSON'S EASY BLANCHING. Does well where other kinds will not grow. Good quality..	.15	.50	4.00
DREER'S MONARCH. Does well on many soils. One of the easiest kinds to raise. Strong, large plants. A great Winter keeper. Very sweet and fine15	.60	5.00
GIANT PASCAL. Tall Winter. Fine nutty flavor. One of the best for storing15	.50	4.00
WINTER QUEEN. Stocky, very large, crisp and of fine flavor15	.50	4.00

Add 5 cents per doz., 12 cents per 100 and 8 cents for each additional 100 if you want these plants sent by Parcel Post.

Mr. Raph W. Sterling,
 Cutchogue, L. I.

Medford, L. I.,
 February 25, 1925.

Dear Neighbor:

Not even your immediate family feels as good over your extremely neat, shipshape catalog as your neighbor down here in the Pine Barrens.

It will do you a heap of good and there is no reason in the world why you shouldn't be among the leaders in the seed business in this country.

Loyally,
HAL B. FULLERTON,
 Director of Agriculture

CABBAGE PLANTS

This seed is treated for Black Stem.

Plants are all grown from choice Long Island grown seed excepting the Danish Ball Head.

	Doz.	100	1000
ALL SEASON. Sure heading. Large, flat heads..	\$.10	\$.50	\$3.00
EARLY FLAT DUTCH. Best for late setting.....	.10	.50	3.00
SAVOY. Long Island Special. Curled or crumpled leaves. Best quality10	.60	4.00
LARGE LATE DRUMHEAD. Largest heads....	.10	.50	3.00
LATE FLAT DUTCH. Solid, large heads10	.50	3.00
DANISH ROUNDHEAD. Short stems, very solid	.10	.50	3.00
ALLEN'S MAMMOTH ROCK RED. Sure heading	.15	.60	4.00

If you want any of the Brussels Sprout, Cauliflower or Cabbage Plants listed above sent by Parcel Post add 8 cents per doz., 12 cents per 100, and 8 cents per 100 for each additional 100, to above prices.

POULTRY DEPARTMENT

S. C. WHITE LEGHORNS

We have about 50 nice Leghorn hens, Sterling Strain, and have mated them to 5 nice Barron Strain cockerels. This should give a pen that would be satisfactory in every way. Nice large white eggs, just what you want for new blood in your flocks or to start your new flock with.

EGGS FOR HATCHING

Per Setting of 15 eggs	\$1.90
Per 3 Settings, 45 eggs	4.00
Per 100 eggs	7.00

My Eggs for Hatching are packed carefully in substantial carriers. A 10% discount is allowed to customers who come and get the eggs at the Farm, using their own containers.

BROODERS, INCUBATORS AND POULTRY SUPPLIES

Wishbone Oil-Burning Valveless Brooders

The Valveless Wishbone Brooder is the best and simplest on the market. Nothing to get out of order, gives lots of heat where the chicks need it, fresh air, too, and all you have to do is to clean the wick once in a while and keep the oil tank filled.

COMPLETE BROODERS

What They Cost

50-100 chicks, No. 22—with 22-inch canopy	\$10.00
100-350 chicks, No. 32—with 32-inch canopy	16.00
350-500 chicks, No. 42—with 42-inch canopy	19.00
500-1000 chicks, No. 52—with 52-inch canopy	22.00

BROODERS—Continued

HEATERS ONLY

No. 22	\$ 4.00
No. 32	6.00
No. 42	8.00
No. 52	10.00

CANOPIES ONLY

No. 22	\$ 7.50
No. 32	11.00
No. 42	13.50
No. 52	15.50

No. 10 WISHBONE COAL-BURNING BROODER. Capacity, 250 to 500 chicks. \$20.50 complete.
 No. 20 WISHBONE COAL-BURNING BROODER. Capacity, 500 to 1000 chicks. \$25.50 complete.

WISHBONE FEED HOPPERS for small chicks. One of the handiest and best for dry mash. Each

Small size	\$.35
Medium size50
Large size65

CYPHERS' INCUBATORS AND BROODERS

Cyphers' Incubators are still the standard hatching machines and we are still agent for them. Send for prices. Can still get parts for your old machines.

LEG BANDS

Spirals. Any color and size. Per doz. 15c, per 25 25c, per 100 75c Postpaid.

Aluminum. Adjustable and different sizes. Same prices as above.

GRAIN, POULTRY FEEDS AND SUPPLIES

I keep in stock:

BABY CHICK FEED, Best Kinds
 SCRATCH FEED, Best Kinds
 BEEF SCRAP, 55% Protein
 GROUND OATS
 BUTTERMILK MASH
 WHOLE CORN
 CRACKED CORN
 OATS
 MIDLINGS
 CORN MEAL
 ALFALFA MEAL
 DAIRY FEED
 HORSE FEED
 COTTON SEED MEAL
 BONE MEAL

DRY MASH
 OYSTER SHELL, Two Sizes
 CHARCOAL, Fine
 POULTRY GRIT
 DRINKING FOUNTS
 SHELL AND FEED HOPPERS
 CARBOLA, the Efficient White-wash and Disinfectant. See page 60
 INCUBATOR THERMOMETERS
 BROODER THERMOMETERS
 LAMP WICKS
 BLUE FLAME LAMP WICKS

STERLING MIXED DRY MASH

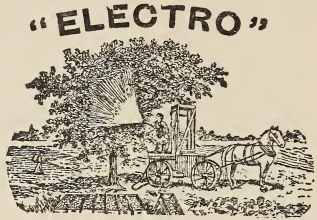
A nicely balanced Dry Mash containing the very best grade of Beef Scrap, Middlings, Corn Meal and other grains. Has given excellent results wherever tried. Makes hens lay. Per 10 lb. pkg., 50c; per 100 lb. bag, price varies, write for prices.

Can get you any kind of grain that you might want.

INSECTICIDES, SPRAYING MATERIAL AND SUPPLIES

"ELECTRO" SPRAY MATERIALS

Vreeland's "Electro" Arsenate of Lead, "Electro" Calcium Arsenate and "Electro" Bordo Powder are the best grade spraying materials that I can procure. Get my prices and analysis before buying elsewhere. You only have to use 2 to 4 lbs. to 50 gals. of water of the Arsenates, and 5 to 6 lbs. of the Bordo Powder. These powders come packed in convenient sized pkgs. at the same price per lb. as a 100 or 200 lb. drum and are much easier to handle.



SPRAY CHEMICALS

The prices on all Insecticides and Spraying Material quoted are net cash. Time prices are 1 cent per lb. higher.

Prices liable to change without notice.

ARSENATE OF LEAD

Vreeland's "Electro" brand. The standard of quality. Per 25 lb. pkg., 19c per lb.

Vreeland's Arsenate of Lead packed in 5 lb. bags, 6 to a case. 5 lbs. or more at 19c per lb.

Vreeland's Arsenate of Lead, 1 to 4 lbs., at 25c per lb.

Niagara Arsenate of Lead. A fine brand of lead, fluffy and fine ground. 5 lb. pkgs., 10 to a case, per lb., 18c.

CALCIUM ARSENATE

A light, fluffy powder, stronger than the Arsenate of Lead, and keeps in solution better.

Vreeland's "Electro" brand. Arsenic Oxide not less than 40%. 25 lb. pkg. at 11c per lb., 5 lb. pkg. at 11c per lb., 6 to a case.

Niagara Calcium Arsenate. A fine brand of Calcium packed in 5 lb. pkgs., 10 to a case or in 100 lb. drums at 10c per lb.

Use Calcium with your Bordeaux Mixture and save money on your Poison.

VREELAND'S "ELECTRO" DRY POWDERED BORDO MIXTURE

This mixture contains not less than 18% copper and is very finely ground. Use 5 to 10 lbs. to 50 gals. water, for control of Blight and Fungus. Packed in 5 lb. bags, 6 to a case, 5 lbs. or more at 17c per lb. 1 to 4 lbs. at 20c per lb., 100 lbs. \$16.00.

VREELAND'S "ELECTRO" DRY POWDERED BORDO-LEAD MIXTURE

This is a mixture of Dry Arsenate of Lead and Powdered Bordo. It controls Blight and kills the bugs at the same time. Also good for dusting Tomatoes and other plants for Fleas and Lice. They cannot live in a heavy dusting of this.

Packed in 25 lb. pkgs. 5 lbs. or more at 20c per lb.; 1 to 4 lbs. at 22c per lb.; 100 lbs. \$18.00.

VREELAND'S "ELECTRO" DRY POWDERED LIME-SULPHUR

Finely powdered. Mix about 12 to 15 lbs. with 45 gals. water and use it as a Dormant Spray. Use 3 to 5 lbs. for a Summer Spray.

Packed in a 100 lb. drum, per 100 lbs. \$15.00. Packed in a 25 lb. drum, 25 lbs. at 17c per lb. 5 lb. pkgs. at 22c per lb. 1 to 4 lbs. at 25c per lb.

KAYSO

Use KAYSO in All Your Sprays for All Spraying

KAYSO makes the spray spread in an even, unbroken coat over every surface, thereby giving better control of pests and diseases—makes the spray mixture or solution apply easily and cover quickly—causes the spray to set instantly and dry rapidly without excessive run-off waste—gives increased coverage. The surface wets instantly—the film becomes fixed the moment it forms—it does not drain or continue to spread, or get thinner.

Try a small amount in some of your spray work, and prove its worth in an actual test. Use it in your dormant spray as well as in the Summer Spray. In the Field as well as in the Orchard. Not necessary in Scalecide.



Packed in the following sizes—I keep the small pkgs. in stock:

100 lb. Sacks	per lb.	\$.20
50 lb. Sacks	per lb.	.21
10 lb. Sacks (12 to case or separately)	per lb.	.25
2 lb. Packages (36 to case or separately)	per pkg.	.60
8 oz. Package (tin container; 24 to case or separately) ..	per pkg.	.30

Always have the smaller size pkgs. in stock.

HALL'S NICOTINE SULPHATE

Same as Black Leaf 40. 40% Nicotine.

The Liquid Spray that controls Plant Lice or Aphis. Put $\frac{1}{2}$ lb. to 50 gals. water, add 6 or 8 ozs. of Kayso and you have one of the best controls there is for sucking insects.

Per 1 oz. Bottle, for garden use	\$.35
Per $\frac{1}{2}$ lb. Tin, makes 50 gals.	1.25
Per 2 lb. Tin	3.50
Per 10 lb. Tin	13.50

Special price on larger quantities.

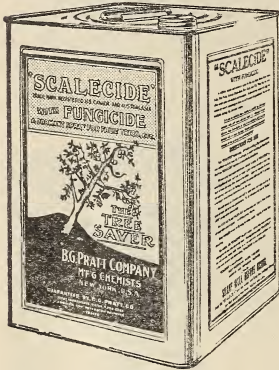
NICOTINE DUST

The dry powdered Nicotine Sulphate. Dust it on in the heat of the day and it forms a gas and will kill all insects, if thoroughly applied.

Per lb. 25c; 10 lbs. at 22c per lb., 100 lb. drums at 19c per lb. Price liable to change.

TOBACCO DUST

Fine ground. Used for dusting plants for Aphis and Fleas, hens' nests, etc. Per lb. 10c; per 10 lbs. 70c; per 100 lb. bag \$5.50.
2 lbs. packed in a can for dusting, 40c.



SCALECIDIDE
THE COMPLETE DORMANT SPRAY
"Makes a Tree Outgrow Its Troubles"

Fall spraying with Scalegicide controls psylla and peach leaf curl. Spring application controls aphids, pear thrips, leaf miner, case bearer and leaf roller. Either fall or spring spraying with Scalegicide controls scale, bud moth, European red mite, fungus or blight cankers from which are spread fire blight, collar rot and root rot. And in addition, year after year use of Scalegicide invigorates the trees.

Ask for Booklet

- 50-gal. bbl. (freight paid to any R. R. station on Long Island) \$38.00
- 15-gal. drums, freight paid to any R. R. station on Long Island 11.50
- Drums \$2.00 extra but returnable at same price.
- F. O. B., Hackensack, N. J.
- 2 5-gal. cans in case, freight paid to any R. R. station on Long Island..... \$10.60
- 1 5-gal. can in case, freight paid to any R. R. station on Long Island..... 6.25
- 1 gal. can, at the Farm 1.40
- 1 qt. can, at the Farm90
- Per Gal. at the Farm; bring your own containers90



SULFOCIDIDE
A Better Summer Spray

Sulfocidide is a powerful summer fungicide—at low cost—for fruits, vegetables and flowers. When sprayed, it quickly decomposes leaving a film of sulfur so fine as to be almost invisible except where drops accumulate.

- 1 5-gal. can in case 8.75
- 1 gal. can in case 2.25
- 1 qt. can in case75
- 1 pint can in case50

1 qt. makes 50 gals. of spray
1 gal. makes 200 gals. of spray
Add 1/2 lb. Kayso to each 50 gals. of spray, putting it in the tank first.

Freight paid to any R. R. station on Long Island on orders of 5 gallons. or over.

FINE GROUND SULPHUR

For dusting Potatoes, Spraying and spreading on the land for Potato Scab.

Sublime Sulphur. The finest and purest. 100% pure. 1 to 4 lbs. at 10c per lb.; 5 to 99 lbs. at 7c per lb.; 100 lb. bags at 5½c per lb.

Commercial Sulphur. 99½% pure. Use one lb. of this or ½ lb. of the Sublime to 1 bu. of seed as you cut your potatoes and you will gradually work out of the Scab. 1 to 4 lbs. at 7c per lb.; 5 to 99 lbs. at 4c per lb.; 100 lb. bag at 3c per lb.

BLUE VITRIOL

For making Bordeaux Mixture. Use 5 lbs. Blue Vitriol, 5 lbs. Ivory Lime to 50 gals. water. Dissolve the Vitriol in water over night. Price on application.

AUTO KANT-KLOG SPRAY PUMPS



Best for Mites, Lice and Germs

Carbola is a white paint and powerful disinfectant combined in powder form. Just mix with water and you have a smooth-flowing disinfecting paint. No waiting or straining. Does not flake or peel off. One pound covers 100 square feet.

Apply Carbola to the interiors of your poultry houses, dairy barns, hog pens and outbuildings. Apply it to every surface that might harbor lice, mites and disease germs. It is live stock insurance against tuberculosis, foot and mouth, hog flue and other destructive diseases. Try it. Satisfaction guaranteed.

5 lbs.	\$.75	50 lbs.	\$ 5.00
10 lbs.	1.25	200 lbs.	18.00

Have a stock of these handy Sprayers listed below on hand and can get you any kind or size you might want on very short notice. Send for catalog.

AUTO-SPRAY NO. 2-C.

A small Hand Sprayer, well made of brass, and durable. Suitable for spraying a small plant bed, flowers, cattle, or anywhere that you do not use more than a pail of spraying material. Each \$1.50.

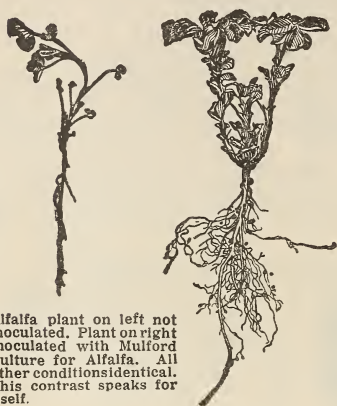
AUTO-SPRAY NO. 9-D.

A good-sized Compressed Air Sprayer, made of galvanized iron. For a farmer who has a good-sized plant bed, chicken house or garden. Each \$6.00. 2 ft. brass extension 60c. Brass elbow extension 45c. Send for descriptive circular.

AUTO-SPRAY NO. 9-B.

The same as above only tank is of brass. Holds about three gallons. A very serviceable sprayer and one that will last a long time. Each \$9.00. 2 ft. brass extension 60c. Brass elbow extension 45c.

MULFORD CULTURES



Alfalfa plant on left not inoculated. Plant on right inoculated with Mulford Culture for Alfalfa. All other conditions identical. This contrast speaks for itself.

If your crops of Clover, Alfalfa, Lima Beans, Garden Beans, Peas, Sweet Peas and other Legumes do not thrive, it indicates that your soil is lacking in Bacteria. Mulford Cultures used on the seed will supply these very necessary Bacteria.

If you use a little lime on your soil and Mulford Cultures on your seed there is no kind of Legume that you cannot grow.

These Cultures are the best that science can produce as the Mulford Co. manufactures vaccines, etc., for the U. S. Government.

There is a different Culture for each of the different kinds of Legumes, so be sure to state what crop you wish to inoculate.

Cultures for Garden, Field and Cow Peas, Garden Beans, Lima Beans, Clovers, Alfalfa, Soy Beans, Vetches and Sweet Peas always on hand. Other kinds can be gotten on very short notice.

	Each
Garden size bottle	\$.35
¼ acre size bottle75
1 acre size bottle	1.50
5 acre bottle	5.00

Booklet telling all about these Cultures sent free on request.

TOOLS AND IMPLEMENTS

We carry a full line of Hoes, Spades, Shovels, Rakes, Wheel Hoes, Cultivators, Seed Drills, Lawn Mowers, Scythes.

Carbola Dusters, large size, each \$1.25.

If we do not have it in stock, can get it on short notice.

FERTILIZER DEPARTMENT

"SUNRISE BRAND"

We are the Authorized Agents for the Long Island Produce and Fertilizer Co. of Riverhead, L. I., for this section.

They manufacture the "Sunrise Brand" of Fertilizer which has given such good satisfaction around Riverhead.

The different analyses that they manufacture are as follows:

4% Ammonia, 8% Phos. Acid, 4% Potash.

5% Ammonia, 8% Phos. Acid, 4% Potash.

5% Ammonia, 8% Phos. Acid, 5% Potash.

4% Ammonia, 8% Phos. Acid, 7% Potash.

6% Ammonia, 9% Phos. Acid, 5% Potash.

The prices vary as to analysis and the time that you pay for the fertilizer. They have Fish Scrap in their different mixtures which improves the mechanical mixture of it and the Plant Food value. I will take your general order to be delivered from Riverhead or you can get a few ton from my own storage at any time if in need, at short notice. They also make a Special Cauliflower Mixture which has been tried in this section and found very satisfactory. Would be pleased to receive your orders.

GARDEN FERTILIZER

Will have a quantity of the highest grade fertilizer that the above Company makes, the 6-9-5. This is especially adapted for use in Gardens and Truck Crops. Can supply you in the following quantities:

10 lb. Bag	\$.60
25 lb. Bag	1.25
125 lb. Bag	4.25
500 lbs. (4 Bags)	16.00 Cash

Special price by the ton.



FERTILIS TABLETS

CONCENTRATED
FERTILIZER



A highly concentrated fertilizer in tablet form, 100 tablets in a box. Suitable for Flowers in pots or Flower Garden, Shrubs or Vegetables. Odorless and a great stimulant.

25c per box, postpaid anywhere on Long Island.

12 pkgs. come packed in one carton (1200 tablets), sent anywhere on Long Island for \$2.50 postpaid.

REAL ESTATE

If any of my friends are interested in Real Estate I would be glad to talk over any that I might own at the time you see me.

At this time I have some very desirable Building Lots situated on the popular development at Nassau Point.

WUNNEWETA HILLSIDE

Lots Nos. 225 to 236 inclusive, Nassau Point Club Properties. 12 lots, each one bordering on Wunneweta Pond or its tributaries, running back to Little Peconic Bay Road on the north and Wunneweta Road on the east.

These lots are nearly all heavily wooded with nice oak timber and rise to a good elevation in the back, giving one of the finest views of Peconic Bay to be had on the Neck.

They are located just north of Nassau Point Club House, about as close to the Club House as any lots that can be purchased today.

Will sell these lots very reasonable considering their desirable location, and in blocks of 2, 5 or 10.

SUNSET HEIGHTS

Lots Nos. 322 to 326-A inclusive, Nassau Point Club Properties. 6 lots on one of the highest elevations overlooking Great Peconic Bay. These lots are located on the west side, very near the Cove, the deepest and best cove in the bay. They are also just above the new Meadow Beach development, and have good roads connecting with the north and south side of this development.

Beautiful cedar trees are growing on all of these lots, some of them perfect in shape and located right for the houses and lawns. If any one has ever bought large, perfect cedar trees and had them transplanted they will realize the value of this.

Three roads run around and through this property—Vanston Road on the east and south, Sunset Road on the west, and Meadow Beach Lane through the center. These are all large lots, most of them with 150 ft. or more front on one road and nearly as much on another.

Will sell these lots singly or in a block of five lots, as Lot No. 326-A we wish to reserve.

Remember that the Nassau Point Club Properties have reserved a strip 15 ft. wide above high water mark all around Nassau Point, and have many roads leading down to the water. This makes one lot as available to the water as the next one, and with the view that the above lots have, of as great value.

Also have two 12-acre Farms in fine state of cultivation that I am offering for sale at this time.

Remember that I own these pieces of property, I am not a Real Estate Broker.

“BURPEE GUARANTEE”

“We guarantee the vitality and purity of our seeds to the full amount of the purchase price. You can have your money back any time within the year if you are not satisfied with the results from Burpee’s Seeds. Even with Burpee quality Seeds success in gardening or farming depends largely upon cultivation, soil, and weather conditions. It is therefore agreed that in no case shall we be liable for more than the amount actually paid for the Seeds.

“We guarantee the safe arrival of your seeds, and we guarantee their quality to the full amount of the purchase price.”

The above is Burpee’s Guarantee, which we try to live up to. In other words, “We strive to please.”

Sincerely,

RALPH W. STERLING.



*Field of Mary and Martha Washington Asparagus Roots
Grown on Sterling Farm—First year from Seed*



*Address all communications and make checks and money orders
payable to*

RALPH W. STERLING
CUTCHOGUE, L. I., *Suffolk County*, NEW YORK
Telephone Peconic 55