

徒然草

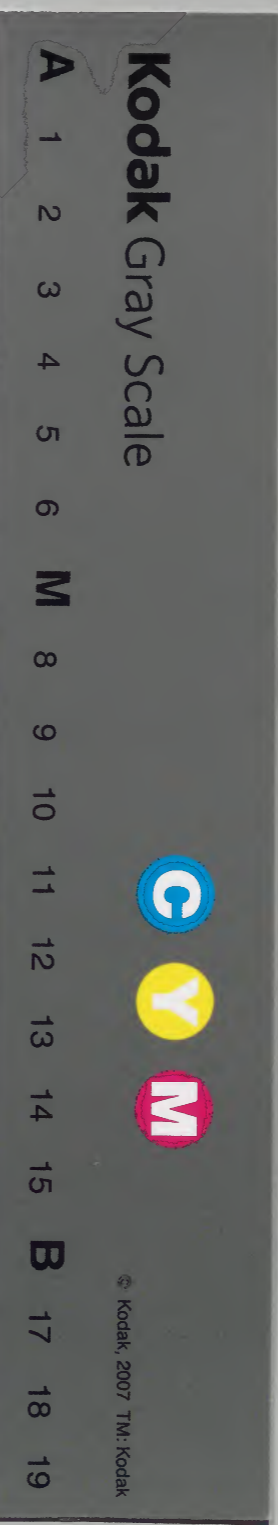
上

61-9

特別	和書門
二六七一	類
番	函架冊
一	一

隨筆 一冊 四

内閣文庫	
番號	和 26711
冊數	2 ( 1 )
函號	特 61 9









あはれなる心にて

指清筆羽林外名宗

あはれなる心にて

成務三ノコノ

あはれなる心にて

身二六三六

あはれなる心にて

イミシノヨミトヲモラメトイハシラシク

不足願ハシ

あはれなる心にて

あはれなる心にて

あはれなる心にて

あはれなる心にて

あはれなる心にて

あはれなる心にて

あはれなる心にて

あはれなる心にて

あはれなる心にて

信西の歌

元享叙書曰秋増賀

平安城人謙議大夫

橋恒平之子也十

歳父母送唐山上

慈惠云新古今作

者

あはれなる心にて

あはれなる心にて

あはれなる心にて

あはれなる心にて

あはれなる心にて

あはれなる心にて

あはれなる心にて

あはれなる心にて

あはれなる心にて

あはれなる心にて

あはれなる心にて











のいみくらん流にきく月罪さくしてん  
ふりさくきくおご

つらちのやんてんかへてやあふ

てぬお〜ゆ〜んおあ・ち〜いおあ

〜るさちんち中おま九条若西大臣部

周尤ち夜みさぞう後んるおあづえ

取へり。傑哉お良も子供おいもあぞよく

侍。まおをくれお〜るるあの中あ

うせ猪のあ乃お後よハリス。聖徳

太子の由墓おあ〜く〜あお〜時あ

聖徳太子  
用明天皇第一  
皇子御后宛  
極部御女

本傳書

敏達天皇元年

壬辰春正月一日

妃忍身中到于

既下不覺有

産故名既戸

白皇子

〜さあ〜れ〜い〜い〜あ〜あ

あ〜い〜ああや〜侍あ〜い〜あ

あ〜い〜野のあああ〜あ〜い〜あ山

あ〜あ〜あ〜い〜あ〜あ〜あ〜い〜

あ〜い〜あ〜あ〜あ〜あ〜あ〜い〜

あ〜い〜あ〜あ〜あ〜あ〜あ〜い〜

あ〜い〜あ〜あ〜あ〜あ〜あ〜い〜

あ〜い〜あ〜あ〜あ〜あ〜あ〜い〜

あ〜い〜あ〜あ〜あ〜あ〜あ〜い〜

あ〜い〜あ〜あ〜あ〜あ〜あ〜い〜



Handwritten text in a cursive script, likely a historical document or letter. The text is written in a fluid, connected style across approximately 12 lines.

Handwritten text in a cursive script, continuing from the previous page. The text is written in a fluid, connected style across approximately 12 lines.







Handwritten text in a cursive script, likely a form of shorthand or a specific dialect. The text is written in dark ink on aged, yellowish paper. It consists of approximately 12 lines of text, starting with a large character that resembles '中' (middle) and ending with a long horizontal stroke.

Handwritten text in a cursive script, similar to the one on the opposite page. It begins with a large character that looks like '唐' (Tang) and continues with several lines of text. The script is fluid and characteristic of the 'kuzushiji' style. The text ends with a long horizontal stroke.







Handwritten text in a cursive script, likely a historical document or manuscript. The text is written in a fluid, connected style across several lines.

Handwritten text in a cursive script, likely a historical document or manuscript. The text is written in a fluid, connected style across several lines.















わが國の事とて世に傳へしは  
もとの事とて世に傳へしは  
うら海一ううん。徳皇の冬月に  
あつて。いふ。あつて。あつて。あつて。  
は。あつて。あつて。あつて。あつて。  
人。いふ。あつて。あつて。あつて。  
し。あつて。あつて。あつて。あつて。  
の。あつて。あつて。あつて。あつて。  
お。あつて。あつて。あつて。あつて。

あつて。あつて。あつて。あつて。  
人。いふ。あつて。あつて。あつて。  
今。あつて。あつて。あつて。あつて。  
い。あつて。あつて。あつて。あつて。  
か。あつて。あつて。あつて。あつて。  
た。あつて。あつて。あつて。あつて。  
し。あつて。あつて。あつて。あつて。  
し。あつて。あつて。あつて。あつて。  
し。あつて。あつて。あつて。あつて。  
し。あつて。あつて。あつて。あつて。







Handwritten text in a cursive script, likely a historical document or manuscript. The text is written in a fluid, connected style across several lines.

Handwritten text in a cursive script, continuing from the previous page. The text is written in a fluid, connected style across several lines.



































Handwritten text in a cursive script, likely a historical document or manuscript. The text is written in a fluid, connected style across several lines.

Handwritten text in a cursive script, continuing from the previous page. The characters are dense and interconnected.

Handwritten text in a cursive script, showing a continuation of the document's content. The script is consistent with the previous pages.

Handwritten text in a cursive script, concluding the visible portion of the document. The lines are well-spaced and clear.







及於... 國... 傳...  
~~~~~  
~~~~~  
~~~~~

~~~~~  
~~~~~  
~~~~~  
~~~~~

~~~~~  
~~~~~  
~~~~~  
~~~~~

~~~~~  
~~~~~  
~~~~~  
~~~~~

~~~~~  
~~~~~  
~~~~~  
~~~~~

~~~~~  
~~~~~  
~~~~~  
~~~~~

~~~~~  
~~~~~  
~~~~~  
~~~~~

~~~~~  
~~~~~  
~~~~~  
~~~~~

~~~~~  
~~~~~  
~~~~~  
~~~~~

~~~~~  
~~~~~  
~~~~~  
~~~~~















Handwritten text in a cursive script, likely a historical document or manuscript. The text is written in a fluid, connected style across multiple lines on both pages of the open book. The ink is dark, and the paper shows signs of age and wear.



















Handwritten text in a cursive script, likely a form of shorthand or a specific dialect. The text is arranged in approximately 12 horizontal lines across the page.

Handwritten text in a cursive script, continuing from the previous page. The text is arranged in approximately 12 horizontal lines across the page.















Handwritten text in a cursive script, likely a historical document or letter. The text is written in a fluid, connected style across several lines.

Handwritten text in a cursive script, likely a historical document or letter. The text is written in a fluid, connected style across several lines.







Handwritten text in a cursive script, likely a historical document or letter. The text is written in a dark ink on aged, yellowish paper. It consists of approximately 12 lines of text, starting with a large initial character that resembles a stylized 'S' or 'C'. The script is fluid and characteristic of early modern European handwriting.

Handwritten text in a cursive script, continuing from the previous page. The text is written in a dark ink on aged, yellowish paper. It consists of approximately 12 lines of text, starting with a large initial character that resembles a stylized 'S' or 'C'. The script is fluid and characteristic of early modern European handwriting.



Handwritten text in a cursive script, likely a form of shorthand or a specific dialect. The text is arranged in approximately 15 horizontal lines across the page. The characters are highly stylized and interconnected, characteristic of shorthand systems used in the 19th century. The ink is dark and the paper shows signs of age and wear.



















Handwritten text in a cursive script, likely a letter or document. The text is written vertically on the right page of the open book. It consists of approximately 12 lines of text, starting with a large initial character that resembles 'A' or 'H'. The script is fluid and characteristic of the Edo period.

Handwritten text in a cursive script, likely a letter or document. The text is written vertically on the left page of the open book. It consists of approximately 12 lines of text, starting with a large initial character that resembles 'A' or 'H'. The script is fluid and characteristic of the Edo period.











あつてぬるこいさ。伊勢も清子みし  
かたしむかあにこいし。あはれ

如貴茂の山本権太の業平の要りや。

人のあつたりはすがへ侍本まじりる直系り

あつてに。老しむか目遠る。あよび

あつて。あつて。あつて。あつて。あつて。

あつて。あつて。あつて。あつて。あつて。

あつて。あつて。あつて。あつて。あつて。

あつて。あつて。あつて。あつて。あつて。

あつて。あつて。あつて。あつて。あつて。

あつて。あつて。あつて。あつて。あつて。

あつて。あつて。あつて。あつて。あつて。

あつて。あつて。あつて。あつて。あつて。

あつて。あつて。あつて。あつて。あつて。

あつて。あつて。あつて。あつて。あつて。

あつて。あつて。あつて。あつて。あつて。

あつて。あつて。あつて。あつて。あつて。

あつて。あつて。あつて。あつて。あつて。

あつて。あつて。あつて。あつて。あつて。

あつて。あつて。あつて。あつて。あつて。



ノ用爲に。kottu — の押領及まをへん  
ふん kottu の sei kottu の 押領及まをへん  
まをへん — 押領及まをへん kottu の sei kottu  
つとまをへん食人 kottu の sei kottu — 押領及まをへん  
め。あ時彼の由子。人 kottu の sei kottu 押領及まをへん  
し。あ。あ時彼の由子。人 kottu の sei kottu 押領及まをへん  
彼のらら。あ。あ時彼の由子。人 kottu の sei kottu 押領及まをへん  
あ。あ時彼の由子。人 kottu の sei kottu 押領及まをへん  
あ。あ時彼の由子。人 kottu の sei kottu 押領及まをへん

あ。あ時彼の由子。人 kottu の sei kottu 押領及まをへん  
あ。あ時彼の由子。人 kottu の sei kottu 押領及まをへん  
あ。あ時彼の由子。人 kottu の sei kottu 押領及まをへん  
あ。あ時彼の由子。人 kottu の sei kottu 押領及まをへん  
あ。あ時彼の由子。人 kottu の sei kottu 押領及まをへん  
あ。あ時彼の由子。人 kottu の sei kottu 押領及まをへん  
あ。あ時彼の由子。人 kottu の sei kottu 押領及まをへん  
あ。あ時彼の由子。人 kottu の sei kottu 押領及まをへん  
あ。あ時彼の由子。人 kottu の sei kottu 押領及まをへん  
あ。あ時彼の由子。人 kottu の sei kottu 押領及まをへん







Handwritten text in a cursive script, likely a historical document or manuscript. The text is written in a dark ink on aged, yellowish paper. It consists of approximately 15 lines of text, with some lines starting with a long horizontal stroke that serves as a decorative flourish or a section separator. The script is highly stylized and difficult to decipher without a key, but it appears to be a form of early modern European cursive.



Handwritten text in a cursive script, likely a historical document or manuscript. The text is written in a fluid, connected style across multiple lines on both pages of the open book. The ink is dark, and the paper shows signs of age and wear.







たかきおのゝこゝろ。たゞいふ。おのゝこゝろ。おのゝこゝろ。  
みちういよ。くれ。おのゝこゝろ。おのゝこゝろ。おのゝこゝろ。  
うた。いかに。おのゝこゝろ。おのゝこゝろ。おのゝこゝろ。  
おのゝこゝろ。おのゝこゝろ。おのゝこゝろ。おのゝこゝろ。  
おのゝこゝろ。おのゝこゝろ。おのゝこゝろ。おのゝこゝろ。  
おのゝこゝろ。おのゝこゝろ。おのゝこゝろ。おのゝこゝろ。  
おのゝこゝろ。おのゝこゝろ。おのゝこゝろ。おのゝこゝろ。  
おのゝこゝろ。おのゝこゝろ。おのゝこゝろ。おのゝこゝろ。  
おのゝこゝろ。おのゝこゝろ。おのゝこゝろ。おのゝこゝろ。  
おのゝこゝろ。おのゝこゝろ。おのゝこゝろ。おのゝこゝろ。

おのゝこゝろ。おのゝこゝろ。おのゝこゝろ。おのゝこゝろ。  
おのゝこゝろ。おのゝこゝろ。おのゝこゝろ。おのゝこゝろ。  
おのゝこゝろ。おのゝこゝろ。おのゝこゝろ。おのゝこゝろ。  
おのゝこゝろ。おのゝこゝろ。おのゝこゝろ。おのゝこゝろ。  
おのゝこゝろ。おのゝこゝろ。おのゝこゝろ。おのゝこゝろ。  
おのゝこゝろ。おのゝこゝろ。おのゝこゝろ。おのゝこゝろ。  
おのゝこゝろ。おのゝこゝろ。おのゝこゝろ。おのゝこゝろ。  
おのゝこゝろ。おのゝこゝろ。おのゝこゝろ。おのゝこゝろ。  
おのゝこゝろ。おのゝこゝろ。おのゝこゝろ。おのゝこゝろ。  
おのゝこゝろ。おのゝこゝろ。おのゝこゝろ。おのゝこゝろ。



Handwritten text in a cursive script, likely a historical document or manuscript. The text is written in a dark ink on aged, yellowish paper. It consists of approximately 12 lines of text, starting with a large initial letter 'S' and ending with a period. The script is highly stylized and difficult to decipher without a key.

Handwritten text in a cursive script, continuing from the previous page. It consists of approximately 12 lines of text, starting with a large initial letter 'S' and ending with a period. The script is highly stylized and difficult to decipher without a key.







Handwritten text in a cursive script, likely a historical document or manuscript. The text is written in a fluid, connected style across multiple lines on both pages of the open book. The characters are dense and difficult to decipher without specialized knowledge of the script.







































馬車は馬の力に依りて走る。馬  
の力に依りて走る。馬の力に依りて走る。  
馬の力に依りて走る。馬の力に依りて走る。  
馬の力に依りて走る。馬の力に依りて走る。  
馬の力に依りて走る。馬の力に依りて走る。  
馬の力に依りて走る。馬の力に依りて走る。  
馬の力に依りて走る。馬の力に依りて走る。  
馬の力に依りて走る。馬の力に依りて走る。  
馬の力に依りて走る。馬の力に依りて走る。  
馬の力に依りて走る。馬の力に依りて走る。

馬の力に依りて走る。馬の力に依りて走る。  
馬の力に依りて走る。馬の力に依りて走る。  
馬の力に依りて走る。馬の力に依りて走る。  
馬の力に依りて走る。馬の力に依りて走る。  
馬の力に依りて走る。馬の力に依りて走る。  
馬の力に依りて走る。馬の力に依りて走る。  
馬の力に依りて走る。馬の力に依りて走る。  
馬の力に依りて走る。馬の力に依りて走る。  
馬の力に依りて走る。馬の力に依りて走る。  
馬の力に依りて走る。馬の力に依りて走る。















Handwritten text in a cursive script, likely a historical document or manuscript. The text is written in a fluid, connected style across several lines.

Handwritten text in a cursive script, continuing from the previous page. The text is written in a fluid, connected style across several lines.















Handwritten text in a cursive script, likely a historical document or letter. The text is written in a fluid, connected style across approximately 12 lines.

Handwritten text in a cursive script, continuing from the previous page. The text is written in a fluid, connected style across approximately 12 lines.







Handwritten text in a cursive script, likely a historical document or letter. The text is written vertically on the right page of an open book. It consists of approximately 15 lines of dense, flowing characters.

Handwritten text in a cursive script, likely a historical document or letter. The text is written vertically on the left page of an open book. It consists of approximately 15 lines of dense, flowing characters.















Handwritten text in a cursive script, likely a letter or document. The text is written in a fluid, connected style across several lines.

Handwritten text in a cursive script, continuing from the previous page. The text is written in a fluid, connected style across several lines.



























Handwritten text in a cursive script, likely a form of shorthand or a specific dialect. The text is arranged in approximately 12 horizontal lines across the page.

Handwritten text in a cursive script, likely a form of shorthand or a specific dialect. The text is arranged in approximately 12 horizontal lines across the page.























Handwritten text in a cursive script, likely a historical document or letter. The text is written in a fluid, connected style across approximately 12 lines.

Handwritten text in a cursive script, likely a historical document or letter. The text is written in a fluid, connected style across approximately 12 lines.







Faint, illegible handwritten text in a cursive script, likely Japanese, covering the right page of the manuscript. The text is arranged in approximately 10 horizontal lines, though the characters are too light and faded to be transcribed accurately.



