

775 013

HEADQUARTERS  
 TOKAI-HOKURIKU MIL GOVT REGION  
 APO 710 (Nagoya, Honshu)

FORM 1 - 2  
 (200)

Date: \_\_\_\_\_

REPARATIONS CHECK SHEET

1. Company: Fuikoshi Kozai Kogyo Co., Ltd.
2. Plant: Yamamuro 3. Code Number: Not recieved yet
4. Address: No.888 Nakagawara, Toyama City
5. Year Construction Completed: 1944
6. Number of Machines Suitable for Reparations: Approx 370
7. Principal Pre-1941 Products:

Product

Approximate % of Production

None

8. Principal 1941-1945 Products:

Product

Approximate % of Production

Part Articles for 20mm Machine Guns	700 sets (Monthly)
Part Articles for 25mm Machine Guns	280 ( " )
Pat Articles for A.A. Guns	70 ( " )
Shell Bodys for 25mm Machine Guns	32,200 Rounds ( " )

9. Originally organized for Munitions or Aircraft Production?

\* Yes No

10. Converted for Munitions or Aircraft Production through major change in Volume or Character of Equipment?

Yes \* No

11. Plant now producing Electric Machines and Heaters.  
 Future production  
 Auto-tricycle parts.

Signed \_\_\_\_\_

*Lucl*

*4756*

775 013

HEADQUARTERS  
 TOKAI-HOKURIKU MIL GOVT REGION  
 APO 710 (Nagoya, Honshu)

FORM 1-2  
 (200)

Date: \_\_\_\_\_

REPARATIONS CHECK SHEET

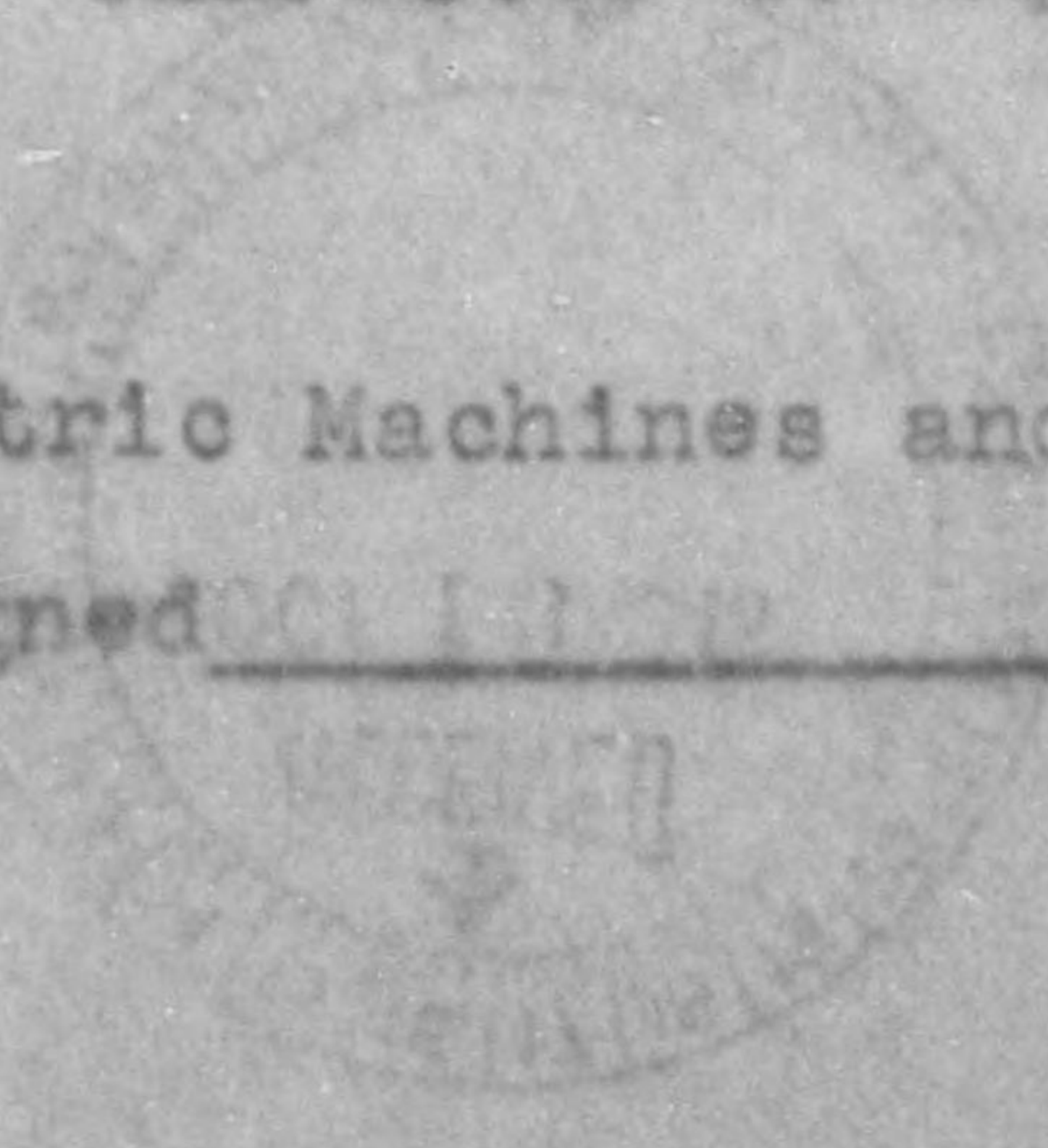
1. Company: Fujikoshi Kozai Kogyo Co., Ltd.
2. Plant: Yamamuro 3. Code Number: Not recieved yet
4. Address: No. 888 Nakagawara, Toyama City
5. Year Construction Completed: 1944
6. Number of Machines Suitable for Reparatons: Approx 370
7. Principal Pre-1941 Products:

<u>Product</u>	<u>Approximate % of Production</u>
None	

8. Principal 1941-1945 Products:

<u>Product</u>	<u>Approximate % of Production</u>
Part Articles for 20mm Machine Guns	700 sets (Monthly)
Part Articles for 25mm Machine Guns	280 ( " )
Part Articles for A. A. Guns	70 ( " )
Shell Bodys for 25mm A. A. Guns	32,200 Rounds ( " )

9. Originally organized for Munitions or Aircraft Production?  
 \* Yes No
10. Converted for Munitions or Aircraft Production through major change in Voluse or Character of Equipment?  
Yes \* No
11. Plant no w producing Electric Machines and Heaters.  
 Future plans  
 Auto-tricycle parts. Signed \_\_\_\_\_



*Incl 1/2*

775 013

Name of Machineries of  
Borrowing from Ishikawajima Plant.

As of Dec. 3, 1946

Fujikoshi Dozai Gogyo K.K.  
20, Ishikane, Toyama City.

No.	Name of Machine	Manufacturer	Capacity	Remarks.	Location
15-13					
-72	Hydraulic press	Nakashima Manufactory.	200 ton	Not motor	Yamamuro Plant.
-73	"	"	750 ton	50 HP motor (within Toyama Plant)	"
-74	Bench Roller	Unknown	1,750m/m	Not motor	"
-340	Cutter	Unknown	300m/m- 20m/m	Not motor	"
80	Electric Welding.	Osaka Electric K.K.	15KW		Toyama Plant.
81	"	Unknown	10KW		"
82	"	Osaka Electric K.K.	15KW		"
83	"	"	15KW		"
84	"	Hitachi Electric Manufactory.	10KW		"
85	"	Showa Manufactory.	15KW		"
86	"	Hitachi Electric Div.	15KW		"
87	"	Osaka Trans- former K.K.	28KVA		"
88	"	"	15KW		"
89	"	Unknown	Unknown		Location unknown, pending investiga- tion.
* TOTAL 14 Stands					

Name of Machineries of  
Borrowing from Ishikawajima Plant.

As of Dec. 3, 1946

Fujikoshi Dozai Kogyo K.K.  
20, Ishikane, Toyama City.

No.	Name of Machine	Manufacturer	Capacity	Remarks.	Location
15-13					
-72	Hydraulic press	Nakashima Manufactory.	200 ton	Not motor	Yamamuro Plant.
-73	"	"	750 ton	50 HP motor (within Toyama Plant)	"
-74	Bench Roller	Unknown	1,750m/m	Not motor	"
-340	Cutter	Unknown	500m/m- 20m/m	Not motor	"
80	Electric Welding.	Osaka Electric K.K.	15KW		Toyama Plant.
81	"	Unknown	10KW		"
82	"	Osaka Electric K.K.	15KW		"
83	"	"	15KW		"
84	"	Hitachi Electric Manufactory.	10KW		"
85	"	Showa Manufactory.	15KW		"
86	"	Hitachi Electric Div.	15KW		"
87	"	Osaka Trans- former K.K.	28KVA		"
88	"	"	15KW		"
89	"	Unknown	Unknown		Location unknown, pending investiga- tion.
TOTAL 14 Stands					

775 013

HEADQUARTERS  
TOYAMA MILITARY GOVERNMENT TEAM  
APO 713 (Toyama, Honshu)

25 September 1946

SUBJECT: OI 1/2 Report (Fujikoshi Kozai Kogyo Co., Ltd.,  
Toyama Plant)  
TO : Commanding Officer, Tokai-Hokuriku Mil Govt Region,  
APO 710 (Nagoya, Honshu)  
Attn; Res, Comm and Ind Officer

1. The following report is submitted in compliance with paragraph  
"3c" of OI 1/2, Hq I Corps, dated 20 July 1946;

- a. The machinery in the plant is generally in (good,  
~~XXXXXXXXXXXX~~) condition ~~XXXXXXXXXXXXXXXXXXXX~~  
~~XXXXXXXXXXXXXXXXXXXX~~).
- b. Proper protective measures to preserve the equipment  
(have/~~XXXXXXXX~~ been taken.
- c. The management (has/~~XXXXXXXX~~ complied with the  
provisions of OI 1/2.

2. In view of the facts contained in the attached check sheet,  
it is recommended that this plant (be/~~XXXXXX~~) permitted to operate  
(~~XX~~). It is further recommended  
that this plant (~~XXXXXXXX~~/be removed from) the reparations list.  
partly

FOR THE COMMANDING OFFICER;

Incl; 1.  
Check Sheet (3 copies)

EUGENE MOSS  
Captain CAC  
Industry Officer



775 013

HEADQUARTERS  
TOYAMA MILITARY GOVERNMENT TEAM  
APO 713

23 September 1946

SUBJECT: Exclusion of Machinery in Reparations Plant

TO : Whom it may Concern

1. Application of the Fujikoshi Kozai K.K. is disapproved by 4th indorsement from SCAPIN Subject application.
2. That part of the plant engaged in manufacture of machine tools and using 484 machines will be held in custody.
3. That part of the plant engaged in manufacturing of precision bearings and using 1583 machine tools will be held in custody.

FOR THE COMMANDING OFFICER:

KENNETH R. SPEAS  
Captain, FA  
Adjutant

TOYAMA DETACHMENT  
90th Mil Govt Hq & Hq Company  
APO 301, c/o Postmaster  
San Francisco, Calif.

20 May 1946

**SUBJECT:** Application for Reconversion of Toyama Factory of Fujikoshi  
Kosaiogyo Company, Ltd.

**TO :** 94th Mil Govt Gp., ATTN: Resource and Industry Officer

1. Subject mentioned plant was physically inspected by this headquarters and the following information ascertained.

2. Reference paragraph 4 - Date of construction was interpreted as date construction was completed, consequently the date is simultaneous with date of first operation.

3. Increase in capital is attributed to expansion of plant and increasing the number of shares.

4. Subject plant received an advanced payment of 33,000,000 Yen from the government; due to consumption of war company completed only 40% of governmental order, consequently a pecuniary deficit of approximately 15,000,000 Yen is outstanding.

A. Additional Financial Deficits:

1. Wartime Financial Bank	90,000,000 Yen
2. Nippon Colonial Bank	150,000,000 Yen
3. Hokuriku Bank	94,000,000 Yen
4. Various Civilian Firms	50,000,000 Yen

B. Above listed deficits are outstanding.

5. It should be noted that the controlling 10% of the stock is owned by the government. Application related Japanese name of Wartime Financial Bank.

6. Subject firms manufacture of ball bearings is 30% of complete monthly output, since this headquarters has received no further information relative to ultimate disposition of ball bearing plants - advice is requested from higher authority

7. A more specific list of items to be manufactured can be found in the rear of application under "Price List". Diesel Engines are to be used in small fishing boats.

8. All machines listed in application are located in subject plant and are in good condition; these machines are the property of Fujikoshi (Subject Plant).



9. Your attention is invited to list of raw materials

A. "The Other Metal" includes :

1. Zinc 200,000 kg
2. Copper 245,142 kg
3. Tin 20,000 kg
4. Brass 22,000 kg
5. Aluminum .5 kg

B. "Alloy" refers to :

1. Ferro Manganese
2. Ferro Mol.
3. Ferro Tungsten
4. Ferro silicon

C. Subject company owns three (3) platinum crucibles, weighing approximately 25 grams each.

D. "Special Silver Rod"- Upon termination of the war, metal was turned over to first arsenal, (Tokyo Arsenal). It is assumed that metal is now under American custody.

10. Subject plant employes approximately 5,000 people at the present time.

11. In view of the fact that subject plant controls the dominating shares of stock, this headquarters recommends that it be put on list for reparations as Government Owned Plant.

JOHN CALINAPDE  
2nd Lt. Inf.  
Res. and Ind. Officer

Social No. of Report

Application for operation of and report on  
industrial facilities

To: Eighth Army

Thru: Military government sect

Name and address of Report Unit

Fujikoshi Kozaikogyo Co., Ltd.

No. 20, Ishikane, City Toyama

March, 16, 1946

1. Name of Facility:

Toyama Factory of Fujikoshi Kozaikogyo Co., Ltd.

2. Location:

No. 20, Ishikane, City Toyama

3. Name of president or manager:

Koki Imura

4. History

a. Date of construction:

December, 21th, 1928

b. Date of first operation

December, 21th, 1928

c. 1933-1941 production

*Sub 11*

(Unit = ten thousand yen)

Year	Name all sort of small steel tools	Ball bearings and steel balls	Machine tools	Total
1935	171	—	—	171
1936	198	—	—	198
1937	327	—	—	327
1938	377	11	—	388
1939	1,861	122	—	1,983
1940	2,845	191	63	3,099
1941	4,230	455	—	4,685
Total	10,509	779	63	11,351

Note; Number is showed in value, owing to difficulty in quantity.

d, Present capitalization in yen

92,880,000 yen

## e. Changes made in capital structure since 1935

Year	Year and month	Nominal capital (Thousand yen)	Paid up capital (Thousand yen)
1935	Jan, 10 of Showa	1,500	750
1935	April, 10	1,500	1,000
1936	Jun, 11	1,500	1,250
1936	Nov, 11	1,500	1,500
1937	March, 12	3,000	1,875
1938	Feb, 13	10,000	3,625
1938	May, 13	10,000	5,750
1938	Oct, 13	10,000	7,850
1939	Feb, 14	10,000	1,000
1939	June, 14	25,000	13,750
1939	Oct, 14	25,000	17,500
1940	Feb, 15	25,000	25,000
1940	Aug, 15	50,000	31,250
1940	Nov, 15	50,000	37,500
1941	May, 16	50,000	50,000
1941	Oct, 16	51,600	51,600
1942	Sept, 17	92,880	66,048
1943	May, 18	92,880	80,496
1943	Nov, 18	92,880	92,880

Note: The capital has been increased in 1942 owing to expanding equipment of small tool and bearing section in the Toyama Factory, that takes.

f. Name and address of parent company

Nothing concerned

g. Number of shares outstanding

1,857,000 Shares

h. Number of stockholders

10,285 stockholders

Name of those owing 10 % or more of total

Senjikinrukinlo

i. Fund received from government

Nothing

j. Outline sketch of plant layout with approximate dimensions

See annexed paper

5. Description

A. Principal products

1. Wartime:

All sort of small steel tools and gauges

Ball bearings and steel balls

Machine tools

2. At present:

All sort of small steel tools

Ball bearings

Note, Bearings are continued to manufacture by using a part of present machinery and equipment to take up the necessary demand for manufacturing train cars, mining machines and agriculturing machines etc.

3 Planned for 1943 - 1947

All sort of small steel tools

Ball bearing and steel balls

Bicycles

Diesel - engines

Spindles ( for spinning machine )

Watches

Note, This Factory intend to convert to the peacetime production for to manufacture necessary products in life, collateral goods and to relieve the present employees.

1. Small steel tools and bearings

These articles are continued to manufacture to ~~the~~ <sup>take</sup> up the necessary demand for manufacturing <sup>train</sup> ~~tram~~ cars, mining machines and agriculturing machines

2. Bicycle

This article is very insufficient owing to consumption in wartime, very necessary in life, and tool helpful as collateral goods. This company intend to manufacture this article.

3. Diesel engine

This company intend to manufacture this article for fishing boat to relieve the shortage of rations

4. Spindle ( for spinning machine )

Spinning machines were almost destroyed in wartime, but it is very necessary to relieve the life of people and to manufacture collateral goods. This company intends to manufacture this article by the technics.

5. Watch

This company intends to manufacture this article as the necessary goods in life and as collateral goods by using the technics and equipments of manufacturing minute small steel tools of this company.

B Capacity ( year )

1. Wartime

All sort of small steel tools and gauges	80,000 thousand yen
Ball bearings and steel balls	29,200 thousand yen
Machine tools	2,500 thousand yen
<b>Total</b>	<b>111,700 thousand yen</b>

2. At present

All sort of small tools	30,000 thousand yen
Ball bearings	6,000
<b>Total</b>	<b>36,000</b>

3. 1946-47 ( With unrestricted access to materials)

All sort of small steel tools	40,000 thousand yen	
Ball bearings	15,000	"
Bicycle	12,600	"
Diesel-engines	3,000	"
Spindles	5,400	"
Watches	9,600	"
	<del>87,600</del>	
Total	92,600	"

Note. Number is showed in value, owing to difficulty in quantity.

C. Number of employees

1. Wartime ( At August 15, 1945 )

Men	10,187
Women	8,780
Total	18,967

2. At present ( At February 20, 1946 )

Men	4,147
Women	814
Total	4,961

3. 1946-47 ( At maximum capacity )

Men	7,100
Women	6,400
Total	13,500



6. Machinery of equipment in plant and proposed changes to peace-time production

See annexed paper ( 1st of 1st table and  
2nd of 1st table)

7. Present stocks of raw materials, supplies and unfinished goods

See annexed paper ( 2nd table )

8. Present stocks of finished goods

See annexed paper ( 3rd table)

9. Present stocks of fuel

See annexed paper ( 4th table )

10. Machinery of equipment needed for maximum production

1946-47

Site 907,939m<sup>2</sup>

Building 353,760 m<sup>2</sup>

On machinery and equipment

See annexed paper ( 5th table )

11. Raw materials of supplies needed ( monthly)

- A. For present capacity ( 5b, 2 above )

Description	Quantity
Ordinary steel	2 tons
Special steel	51 tons
Pig iron	0.1 tons

## B. For maximum (5b, 3 above)

Description	Quantity
Ordinary steel	390 tons
Special steel	43 tons
Pig iron	4 tons
Cast iron	249 tons
Copper	0.5 tons
Gun metal	4 tons

## 12. Fuel needed (monthly) ( Do not include present stocks )

Description	Quantity
Coal	600 tons
Cokes	85 tons

## 13. Additional personnel needed ( Not locally available )

Special skills	Number
Nothing concerned	

## 14. Prices ( Current selling prices in yen according to the difference of principal products )

Description	Unit	Price (yen)	
Small steel tool	Hack-saw	piece	2.75
	Drill	"	1.80
	Ordinary cutter	"	22.26
	tap	"	6.20
	Die	"	6.25
	Broaching tool	"	714.00
	Gauge block	"	17.65
	Gear cutter	"	160.00
	Screw thread gauge	"	50.00
	Chaser	"	2.27
	Die = head	"	240.00
	Bolt = gauge	"	35.30
	Plate gauge	"	17.65
	Micrometer	"	10.00
Bearing	Ball bearing	"	6.50
	Roller bearing	"	37.00
Bicycle	vehicle	350.00	
Diesel = engine	set	5,000.00	
Spindle	piece	45.00	
Watch	"	40.00	



Machinery <sup>and</sup> Equipment in plant ( At August 15th 1945 )

No	Name	Total	Classification		
			Small steel tool	Ball bearing	Machine tool
1	Horizontal lathes without read screw	250	104	146	
2	(up to 1000mm center distance)	1,543	1,113	262	168
3	(above 1000mm center distance)	145	73	33	39
4	Turret lathes with vertical turret axis				
5	Turret lathes with horizontal turret axis	154	87	53	12
6	Automatic lathes	2		2	
7	Centering machines	17	13	3	1
8	Vertical boring and drilling machines				
9	Horizontal boring and drilling machines	5	1	1	3
10	Radial drilling machines	8	3		5
11	Vertical drilling machines	152	128	10	14
12	Jig boring machines	9			9
13	Tapping and threading machines	2	2		
14	Gear cutting and hobbing machines	16	10	1	5
15	Honing machines				
16	Planing machines	27	9	3	15
17	Shaping machines	57	15	10	32
18	Slotting machines	16	9	1	6
19	Horizontal cylindrical grinding machines	233	234	30	24

20	Vertical spindle surface grinding machines	45	42		3
21	Horizontal spindle surface grinding machines	149	115	22	13
22	Centerless grinding machines	137	96	46	1
23	Tool grinding machines	394	372	11	11
24	Gear grinding machines	2	2		
25	Plane milling machines	50	39	1	10
26	Vertical spindle milling machines	47	33	4	10
27	Universal milling machines up to 80mm	264	236	9	19
28	Universal milling machines above 80mm				
29	Die sinking machines				
30	Broaching machines	2	2		
31	Shearing and punching machines				
32	Sheet forming and folding machine				
33	Spindle presses				
34	Forging presses				
35	Horizontal forging machines	2	1	1	
36	Hammer operated mechanically				
37	pneumatically	22	22		
38	electrically				
39	by steam	5	3	2	
40	Hack saw	141	105	18	18

41	Other sawing machines				
	Bench milling machines	6	6		
	Universal tool milling machines	18	4	2	12
	Bench grinders	25	19	5	1
	Tool grinders	136	97	23	16
	Internal grinders	193	134	37	22
	Drill shapers	13	13		
	Tap relieving grinders	12	12		
	Thread grinders	11	11		
	Ball grinders	60	60	10	
	Tap groove shapers	35	35		
	Shap gauge grinders	9	8	1	
	Chaser grinders	4	4		
	Chaser R grinders	4	4		
	Profile grinders	3	3		
	Drill groove shapers	47	47		
	Drill relieving grinders	46	46		
	Spline grinders	7	7		
	Broach grinders	5	5		
	Broach sharpner	1	1		
	Lapping machines	27	6	17	4
	Tap grinders	2	2		
	Hob grinders	4	4		
	Tap grooving machines	24	24		
	Reamer grooving machines	1	1		

Ball filling machines	220		220	
Drill tang milling machines	9	9		
Tap tang milling machines	9	9		
Drill grooving machines	59	59		
Drill relief milling machines	29	29		
Punching and shearing machines	25	25		
Power press	24	14	9	1
Steel ball headers	26		26	
Lapping machines	380	36	344	
Ball race machines	161		161	
Marking press	30	17	13	
Marking machines	5	3	2	
Band sawing machines	3	1		2
Wood working lathes	2			2
Wood planing machines	1			1
Wood grinding machines	2			2
Wood drilling machines	1			1
Thread sawing machines	2			2
Saw sharpener	1			1
Drop hammer	1	1		
Sand blast	8	8		
Welding machines	5	5		
Air compressors	4	4		
<b>Total</b>	<b>5,651</b>	<b>3,584</b>	<b>1,583</b>	<b>484</b>

Note: Above machines all belong to the company.



Proposed changes to peacetime production

2nd of 1st table

No	Name	Small steel tool	Sea-ring	Watch	Spindle	Bicycle	Auto-side-car	Die-sel-engine	Total
1	Horizontal lathes without lead screw	104	146						250
2	( up to 1000mm center distance)	466	262	125	210	120	260	100	1,543
3	(above 1000mm center distance)	60	33	14	5	10	10	13	145
4	Turret lathes with vertical turret axis								
5	Turret lathes with horizontal turret axis	66	53			20	15		154
6	Automatic lathes		2						2
7	Centering machines	14	3						17
8	Vertical boring and turning machines								
9	Horizontal boring and drilling machines	1	1				1	2	5
10	Radial drilling machines						2	6	8
11	Vertical drilling machines	44	10	5	3	30	30	30	152
12	Jig boring machines	4		1			2	2	9
13	Tapping and threading machines						2		2
14	Gear cutting and hobbing machine	5	1	4		2	2	2	16
15	Honing machines								
16	Planing machines	12	3			1	3	8	27
17	Shaping machines	33	10			5	1	3	57
18	Slotting machines	10	1				2	3	16
19	Horizontal cylindrical grinding machines	139	30	3	55	12	33	16	288
20	Vertical spindle surface grinding machines	38				2	3	2	45

775 013

21	Horizontal spindle surface grinding machines	112	22	3		2	5	5	149
22	Centerless grinding machines	80	40		5	2	5	5	137
23	Tool grinding machines		358	11		5	10	10	394
24	Gear grinding machines	2							2
25	Plane milling machines	20	1		3	9	8	9	50
26	Vertical spindle milling machines	5	4	2		15	10	10	47
27	Universal milling machines up to 80mm	62	9	1	3	19	100	70	264
28	above 80mm								
29	Die sinking machines								
30	Broching machines	1						1	2
31	Shearing machines and punching								
32	Sheet forming and folding presses								
33	Spindle presses								
34	Forging presses								
35	Horizontal forging machines		1			1			2
36	Hammers operated mechanically								
37	Pneumatically	21		1					22
38	electrically								
39	by steam	3	2						5
40	Hack saws	63	18			20	20	20	141
41	Other sawing machines								
42	Bench milling machines	2		3		1			6

775 013

Universal tool milling machines	8	2	5		3			18
Bench grinders	7	5	10		3			25
Tool grinders	50	23	60	3				136
Internal grinders	112	37	14	3	5	10	12	193
Drill sharpeners	9		2		2			13
Tap relieving grinders	7		3		2			12
Thread grinders	7					2	2	11
Ball grinders		60						60
Tap groove sharpeners	20		10		5			35
Shap gauge grinders	4	1	2		2			9
Chaser grinders	3				1			4
Chaser R grinders	3				1			4
Profile grinders	2					1		3
Drill groove sharpeners	32		10		5			47
Drill relieving grinders	33		9		4			46
Spline grinders	5						2	7
Broach grinder	5							5
Lapping machines	5	17	3				2	27
Broach shaper	1							1
Tap grinders	2							2
Hob grinders	4							4
Tap grooving machines	15		5		4			24
Reamer grooving machines		220						220
Drill tang milling machines	5		2		2			9

Ball filling machines

220

220

Tap tang milling machines	5	9	2		2			9
Drill grooving machines	44		8		7			59
Drill relief milling machines	21		3		5			29
Punching and shearing machines	16		1		8			25
Power presses	8	9			7			24
Steel ball headers		26						26
Tumbling burrels	36	131	63		106	34	10	380
Ball race grinders		161						161
Marking presses	10	13	2		2	1	2	30
Band sawing machines						1	2	3
wood working lathes						1	1	2
Wood planing machines							1	1
Wood grinding machines						1	1	2
Wood drilling machines							1	1
Thread sawing machines						1	1	2
Saw sharpner							1	1
Drop hammer							1	1
Sand blasts	5				3			8
Welding machines	3				1	1		5
Air compressors	2				2			4
<b>Total</b>	<b>2,218</b>	<b>1,570</b>	<b>376</b>	<b>297</b>	<b>453</b>	<b>579</b>	<b>358</b>	<b>5,661</b>

Note, The manufacturing machinery and equipment of Auto side cars will be removed to the Yanamuro Factory of this company, which the Auto side cars will be manufactured.

2nd Table

Present stocks of raw materials, supplies and unfinished Goods

(A) Present stock of raw materials and supplies

(At February 20th )

Description	Quantity	Condition
Special steel plate	74,814 kg	Company ownership
Special steel bar	2,838,467	"
Special silver rod	96,248	"
Ordinary steel	426,295	"
Alloy <i>alloy</i>	17,777	"
The other metal	499,142	"
Total	3,902,743	"

詳細

312

(B) present stocks of unfinished goods

( At February 20 th )

Description	Quantity	Condition
Hack saw	303,138 piece	Company ownership
Drill	27,453 "	"
Cutter	2,884 "	"
Metal saw	7,943 "	"
Reamer	12,762 "	"
End mill	4,003 "	"
Driver	5,000 "	"
Scissors	700 pair	"
Small tool for work	150 set	"
HOs	1,200 pair	"
Bearing	389,814 piece	"
Steel ball	897,156	

3rd table

## Present stocks of finished goods

( At February 20th )

Description	Quantity	Condition
Hack saw	404,712 piece	Company ownership
Drill	231,125 "	"
Cutter	97,271 "	"
Gauge	25,823 "	"
Die	13,113 "	"
Tap	23,271 "	"
Chaser	6,325 "	"
Jig	1,114 "	"
Broach	494 "	"
Micrometer	1,897 "	"
Bearing	139,070 "	"
Steel ball	585,005	

4th Table

Present stocks of fuel

( At February 20th)

Description	Quantity	Condition
Slack	86 ton	Company ownership
Coal	200	
Cokes	11	
Hard coal	44	
Charcoal	5,080 bags	
Wood	8,920 bundles	



775 013

5th Table Machinery & equipment needed for maximum production 1946-47

No	Name	Small steel tool	Bearing	Watch	Spindle	Bicycle	Auto-side-car	Diesel engine	Total
1	Horizontal lathes without lead screw	104	146						250
2	( up to 1000mm center distance)	466	262	492	370	179	260	276	2,305
3	(above 1000mm center distance)	60	33	23	35	18	39	117	319
4	Turret lathes with vertical turret axis								
5	Turret lathes with horizontal turret axis	66	53			101	22	69	311
6	Automatic lathes		2	59					61
7	Centering machines	14	3			5			22
8	Vertical boring and drilling machines								
9	Horizontal boring and drilling machines	1	1		4		55	120	181
10	Radial drilling machines					1	6	90	97
11	Vertical drilling machines	44	10	128	3	112	98	33	428
12	Jig boring machines	4		2			2	9	17
13	Tapping and threading machines			4	2	4	12		22
14	Gear cutting and hobbing machines	5	1	51		12	13	6	88
15	Honing machines								
16	Planing machines	12	3			1	3	66	85
17	Shaping machines	33	10		15	4	4	9	75
18	Slotting machines	10	1	3	12	3	4	24	57
19	Horizontal cylindrical grinding machines	139	30	5	155	25	52	16	422
20	Vertical spindle surface grinding machines	38			2		3	2	45

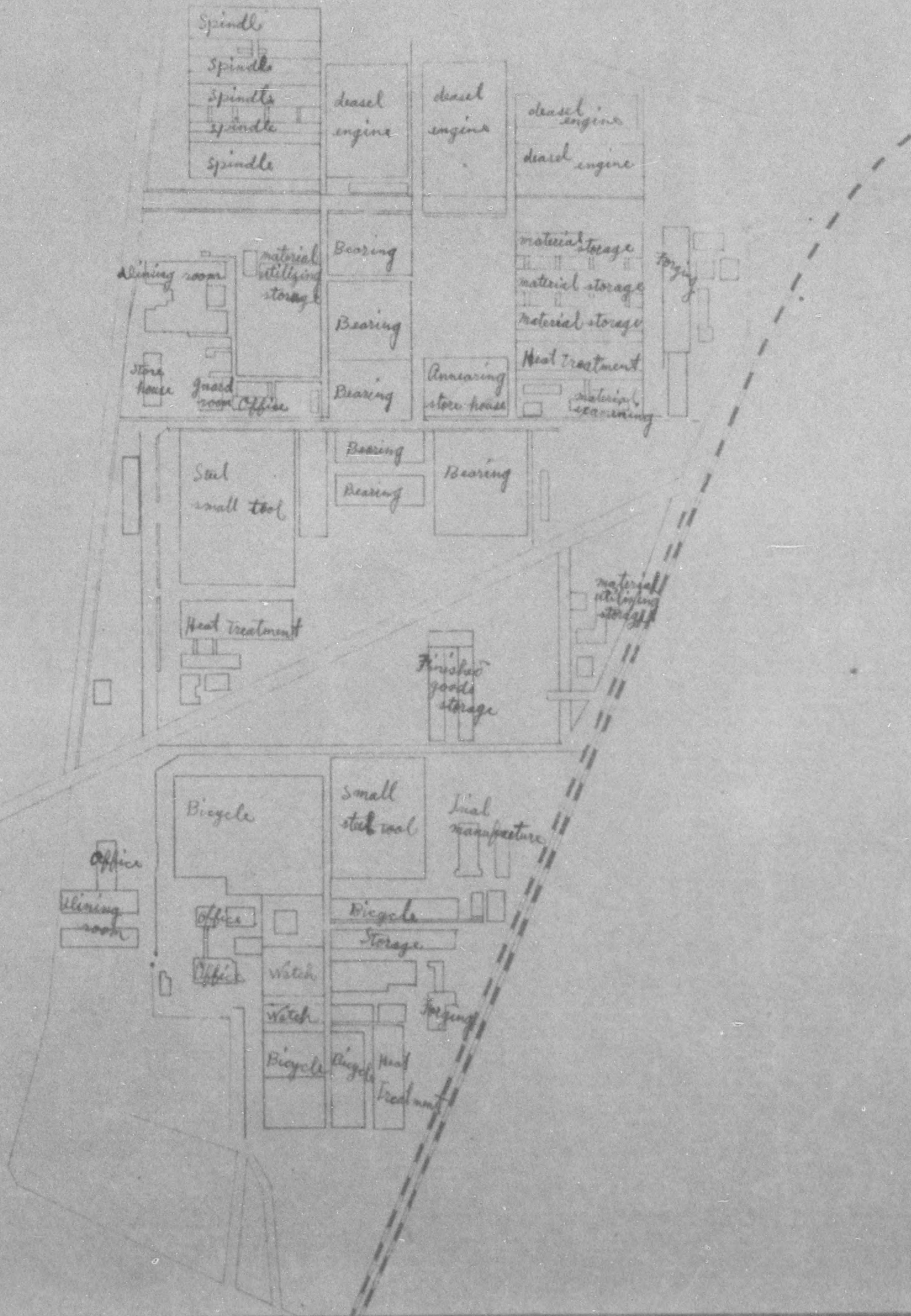
21	Horizontal spindle surface grinding machines	112	22	4	2	6	6	5	157
22	Centerless grinding machines	80	40		5	2	5	5	137
23	Tool grinding machines	558	11			20	12	10	411
24	Gear grinding machines	2							2
25	Plane milling machines	20	1		3	39	18	19	100
26	Vertical spindle milling machines	6	4	3	15	25	27	22	102
27	Universal milling machines to up 80mm	62	9	2	23	19	100	70	285
28	Universal milling machines above 80mm								
29	Die sinking machines								
30	Broaching machines	1			1	2	3	1	8
31	Shearing and punching machines								
32	Sheet forming and folding machines								
33	Spindle presses					57			57
34	Forging presses								
35	Horizontal forging machines		1			1			2
36	Hammer operated machines mechanically								
37	" pneumatically	21		1					22
38	" electrically								
39	" by steam	3	2						5
40	Hand saws	63	18	3	24	25	20	20	173
41	Other sawing machines								
	Bench milling machines	2		157	2	2	5		168
	Universal tool milling machines	8	2	5	3	3			21
	Bench grinders	8	5	10		5			27
	Tool grinders	50	23	60	5	10	15	8	171
	Internal grinders	112	37	14	8	5	10	15	201
	Drill shapers	9		2		2			13
	Tap relieving grinders	7		3		2			12
	Thread grinders	7		1			2	2	12
	Ball grinders		60						60
	Tap groove shapers	20		10		15			45



775 013

Thread sawing machines			1			1	1	3
saw sharpner							1	1
Drop hammers					23	<del>23</del>	1	24
Sand blasts	5				3			8
welding machines	3				1	3		7
Air compressors	2				2			4
Hydraulic presses						7		7
Rolling machines			4					4
Eding machines and the others			36					36
Total	2,218	1,370	1,239	898	962	898	1,039	8,424

775 013



775 013

COPY

HEADQUARTERS I CORPS  
APO 301 (Kyoto, Honahu)CLS/fan  
23 JUL 1946Ref: IG - 412  
AG 004 - BA*Fujikoshi Co.  
Yamamuro Plant*

SUBJECT: Permit for Reconversion from War Production and for Resumption of Production of Essential Civilian Commodities.

TO: Fujikoshi Kozai Kogyo Co., Ltd., Yamamuro Factory.  
(Name and Address of Firm)No. 888 Nakagawara, Toyama, Toyama Prefecture.1. a. In accord with paragraph 3, b, Directive Number Three (3) from the Supreme Commander to the Imperial Japanese Government, dated 22 September 1945, the Fujikoshi Kozai Kogyo Co., Yamamuro Factory  
(Name of Firm)is permitted to immediately start production of a. Bicycle parts  
(Name of Items)b. Electric machine and apparatus (converter and electric drill)c. Auto-side-car (NOTHING FOLLOWS)b. Maximum production currently authorized is (monthly)a. 2,000 pieces    b. 100 sets    c. 200 vehicles

2. The acquisition of material, parts and sub-assemblies as well as the disposition of finished products, and the establishment of sales prices will be in accord with the regulations of the Imperial Japanese Government.

3. Until otherwise directed by this headquarters, a monthly report in English of each item, by name, type and quantity produced by each factory, sub-contractor subsidiary within this factory's control will be delivered to this office by the fifteenth (15) day of the following month.

4. It is understood that this permit for reconversion is issued subject to any and all directives affecting reconversion, ultimate disposition or otherwise, which have been issued or may hereafter be issued by the Supreme Commander for the Allied Powers or by this headquarters.

BY COMMAND OF MAJOR GENERAL WOODRUFF:

O.H. SCHMIDT  
MAJOR, AGD  
ASST. ADJ. GEN.

## Info copy to:

SCAP (Attn: ESS) (1) (w/incl)

SCAP (Attn: G-2) (1) (w/incl)

CG Eighth Army (1) (w/incl)

(Attn: Mil Govt)

Kyoto Liaison Office (1)

Governor of Prefecture concerned (1)

CG Ishikawa Mil Govt Team

Application for operation of and Report  
on Industrial Facilities.

To: Eighth Army.

Thru: Military Government Sect.

Fujikoshi Kozai Kogyo Co., Ltd.

March 20th, 1946.

1. Name of facility. Yamamuro Factory of Fujikoshi Kozai Kogyo Co., Ltd.
2. Location. No. 888 Nakagawara City Toyama.
3. Name of president. Shigenari Kamiide.
4. History.
  - a. Date of construction September 1st, 1944.
  - b. Date of first operation September 1st, 1944.
  - c. 1933-1941 production Nothing.
  - d. Present capitalization yen 92,880,000 Yen.
  - e. Changes made in capital structure since 1935.

Year	Year and month	Nominal capital (Thousand yen)	Capital paid up (Thousand yen)
1935	Jan, 10 of Showa	1,500	750
1935	April, 10 ,,	1,500	1,000
1936	June, 11 ,,	1,500	1,250
1936	Nov, 11 ,,	1,500	1,500
1937	March, 12 ,,	3,000	1,875
1938	Feb, 13 ,,	10,000	3,625
1938	May, 13 ,,	10,000	5,750
1938	Oct, 13 ,,	10,000	7,850
1939	Feb, 14 ,,	10,000	10,000
1939	June, 14 ,,	25,000	13,750
1939	Oct, 14 ,,	25,000	17,500
1940	Feb, 15 ,,	25,000	25,000
1940	Aug, 15 ,,	50,000	31,250
1940	Nov, 15 ,,	50,000	37,500
1941	May, 16 ,,	50,000	50,000
1941	Oct, 16 ,,	51,600	51,600
1942	Sept, 17 ,,	92,880	66,048
1943	May, 18 ,,	92,880	80,496
1943	Nov, 18 ,,	92,880	92,880

Note. The capital has been increased in 1942 owing to expanding equipment of small tool and bearing section in Toyama factory and of steel manufacturing factory for that take up the enlarging demand of small tools and bearings.



f. Name and address of parent company.

Nothing concerned.

g. (1) Number of present shares.

1,857,000 Shares.

(2) Number of stockholders.

10,225

(3) Name of those owing 10 % or more of total.

Senjikinryu Kinko.

(4) Funds received from government.

Nothing.

(5) Outline sketch of plant.

See annexed paper

5. Description.

A. Principal products.

(1) Wartime:

Part articles of 20mm machine gun.

Part articles of 25mm machine gun.

Part articles of high angle gun.

Shell body of 20mm Machine gun.

(2) At present:

Electric cooking stove (500 KW).

Note, This factory manufactured electric cooking stove for Supplement of shortage of fuel in Japan, specially in this area by using of abundant electric quantity. The quantity of the finished goods till this time is 4,300 sets. After the finishing 15,000 electric cooking stoves this factory converts to manufacturing of next products.

(3) Planned for 1946 - 47.

Part article of bicycle

Electric machine and apparatus (converter and electric drill)

Auto-side-car (for conveyance)

Note,

(1) Above products are immediately to manufactures as peace time necessary products. At present those articles are very insufficient, and so this factory manufactures them to take up enlarging demand and to make good the life of people.

(2) This factory intend<sub>s</sub> to convert to peacetime production to relieve present Unemployment.

#### B. Capacity (Monthly)

(1) Wartime

Part article of 20mm Machine gun	700 sets
Part article of 25mm Machine gun	280 ,,
Part article of high angle gun	70 ,,
Shell body of 25mm Machine gun	32,200 pieces

(2) At present

Electric cooking stove (500KW)	1,500 sets
--------------------------------	------------

(3) 1948 - 47 ( With unrestricted access to material )

Part articles of bicycle	3,000 pieces
Electric machine and apparatus	100 sets
( converter           50 sets )	
( electric drill 50 sets )	
Auto - side - car	200 vehicle

C. Number of employees

(1) Wartime

Clerk (man)	137	(girl)	14
Labourer (man)	843	(girl)	198

Note, Above number includes the half-pay list.

(By investigation at the war end)

(2) At present

Clerk (man)	13	(girl)	6
Labourer (man)	106	(girl)	2

(3) 1948 - 47 (at maximum capacity)

Clerk (man)	about 300	(girl)	about 200
Labourer (man)	about 4,800	(girl)	about 1,200

6. Machinery and equipment in plant and proposed change to peacetime production

Site	165,848 m <sup>2</sup>
Building	13,625 m <sup>2</sup>

on machinery and equipment see annexed paper. As 1st table

7. Present stocks of raw materials, supplies, and unfinished goods.

## A. Raw materials

Ordinary steel ( Bar )	68 T	( company ownership)
Special steel ( Bar )	2.2 T	
( Cast)	48.1 T	
Rolled copper ( Tube)	15 T	

## B. Unfinished goods

558 sets

## C. Supplies

## Repairing materials

Special steel	71 T	(company ownership)
Forging steel	10 T	
Tough steel	16.1 T	
Gun metal	2.6 T	
Welding bar	2.1 T	

## 8. Present stocks of finished goods

532 sets

## 9. Present stocks of fuel

Nothing

## 10. Machinery &amp; equipment needed for maximum production 1946-47

See annexed paper (2nd table)

## 11. Raw materials &amp; supplies needed (monthly)

## A. For present capacity (5B, 2above)

Description	Quantity
Cast steel	1.4 T
Ordinary steel	0.3 T
Special steel	0.03 T
Copper	0.2 T

B. For maximum ( 5B, 3 above )

Description	Quantity
Ordinary steel	1,080 T
Pig iron	3.2 T
Cast steel	6 T
Aluminium	56.6 T
Piano wire	4.6 T
Mercury	1.8 T
Copper	2 T
Gun	224 T
Cotton rolling wire	2,130T

12. Fuel needed ( monthly ) ( Do not include present stocks )

Description	Quantity
Coal	10 T
Cokes	28 T
Char coal	100 Bags
Wood	1 T

13. Additional personnel needed (Not locally available)

Nothing as it is locally available

14. Prices ( current selling prices in yen on principal products )

Description	Unit	Quantity
Part article of 20mm machine gun	}	No current selling price as these are necessary only in wartime
Part article of 25mm machine gun		
Part article high angle gun		



1st Table

Machinery & Equipment in plant and plan  
of change to peacetime Production.

Name of Machine	Total at present	Plan after change		
		Bicycle parts	Electric apparatus	Auto-side- car
Lathe (up to 1000mm center distance)	18 (6)	10 (4)	6	2 (2)
,, (above to 1000mm center distance)	119 (56)	21 (8)	12 (12)	86 (36)
Turret Lathe	15 (10)	4 (3)	3	8 (7)
Automatic Lathe	7 (4)	3 (2)		4 (2)
Centering Machine	3 (1)		1	2 (1)
Radial Drilling Machine	4 (3)		1 (1)	3 (2)
Vertical Drilling Machine	22 (9)	1 (1)	3 (1)	18 (7)
Jig Boring Machine	1 (1)			1 (1)
Tapping & Threading Machine	1	1		
Gear Cutting and Hobbing Machine	1			1
Planer	5 (4)		2 (1)	3 (3)
Shaping Machine	21 (8)	1	8 (3)	12 (5)
Slotting Machine	31 (6)	2	7	22 (6)
Horizontal cylindrical Grinding Machine	15 (3)	1	2 (2)	12 (1)
Vertical Spindle Sur- face Grinding ,,	1 (1)			1 (1)
Horizontal Spindle Surface Grinding ,,	16 (4)	1	3 (1)	12 (3)
Centerless Grinding Machine	3 (1)	2		1 (1)
Tool Grinding Machine	21	6	8	7
Plane Milling Machine	109 (35)	10 (5)	14 (5)	85 (25)

Vertical Spindle Milling Machine	102 (41)	8 (5)	22 (6)	72 (30)
Broaching Machine	1			1
Hydraulic Press.	1			1
Crank Press	3	2		1
Hand Press	3 (1)		2 (1)	1
Sewing Machine	7 (1)	1	1	5 (1)
Shearing Machine	1 (1)	1 (1)		
Bench Milling Machine	11 (3)	1	2	8 (3)
Thread Milling Machine	2 (2)	1 (1)	1 (1)	
Internal Grinding Machine.	9 (1)		1	8 (1)
Bench Grinder	4			4
Marking Machine	2 (1)		1	1 (1)
Bench Drilling Machine	7 (2)	1	2	4 (2)
Connected Lathe	7 (7)	6 (6)	1 (1)	
Oil Separated Machine	1 (1)			1 (1)
Horizontal hydraulic Press	2 (2)		2 (2)	
Eccentric Instrument	1			1
Paper Grinder	1			1
Profile Grinder	1			1
Snap Gage	1			1
Fan Centrifugal	2		1	1
Magnaflax	1			1
Transformer	42	6	6	30
Generator (Direct Current)	2		1	1
Total	627 (215)	90 (36)	113 (37)	424 (142)



775 013

Remarks: Machines in ( ) belong to state.

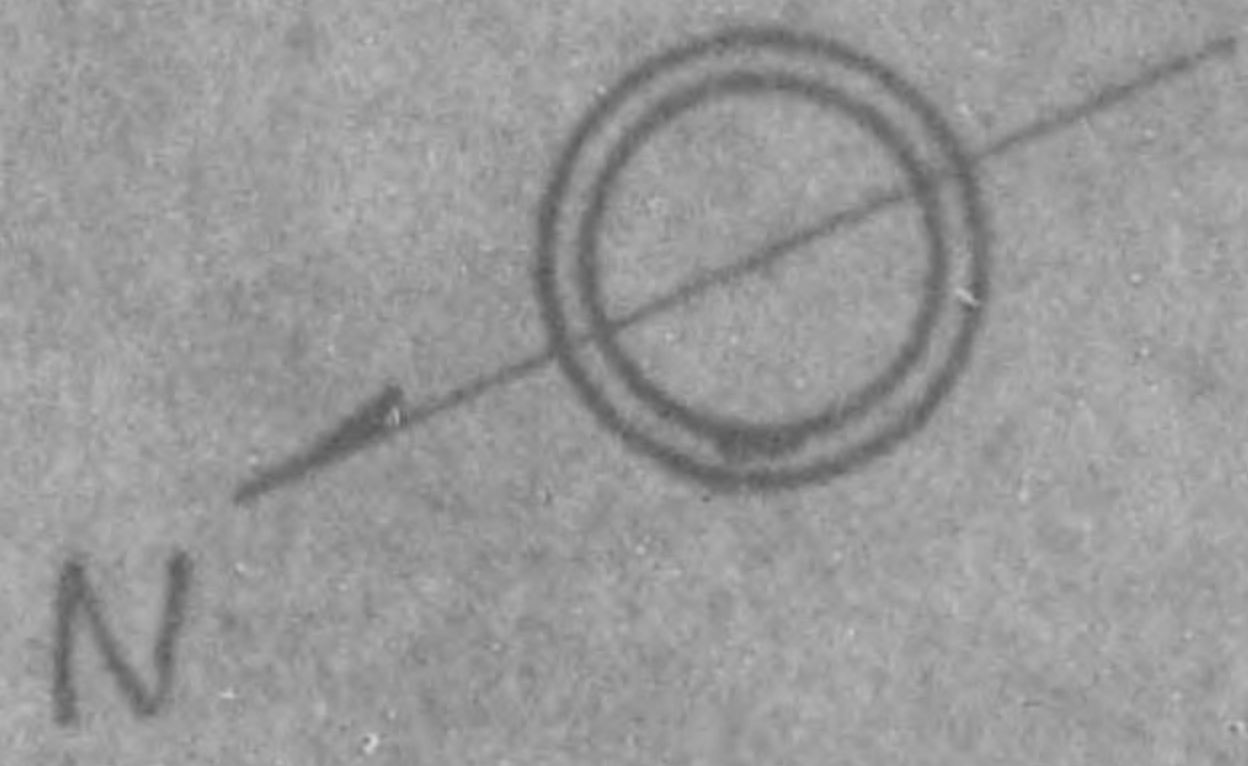


Marking machines	2	
Shearing machines	3	8
Power Press	2	28
Hand Press	2	
Oil Separator	1	
Turret lathes with horizontal turret axis		22
Horizontal boring and drilling machines		55
Jig boring machines		2
Tapping and Threading machines		12
Gear Cutting and hobbing machines		13
Vertical spindle surface grinding machines		3
Universal milling machines (up to 80 mm)		100
Tool grinders		15
Head grinders		2
Profile grinder		1
Lapping machines		2
Drill tang milling machines		2
Drill groove sharpeners		5
Drill relieving grinders		5
Tumbling barrels		34
Marking Press		3
Band sawing machines		1
Wood working lathes		1
Wood grinding machines		1
Thread sawing machines		1

Thread sawing machines		1
Welding machines		3
Hydraulic presses		7
Total	392	898

775 013

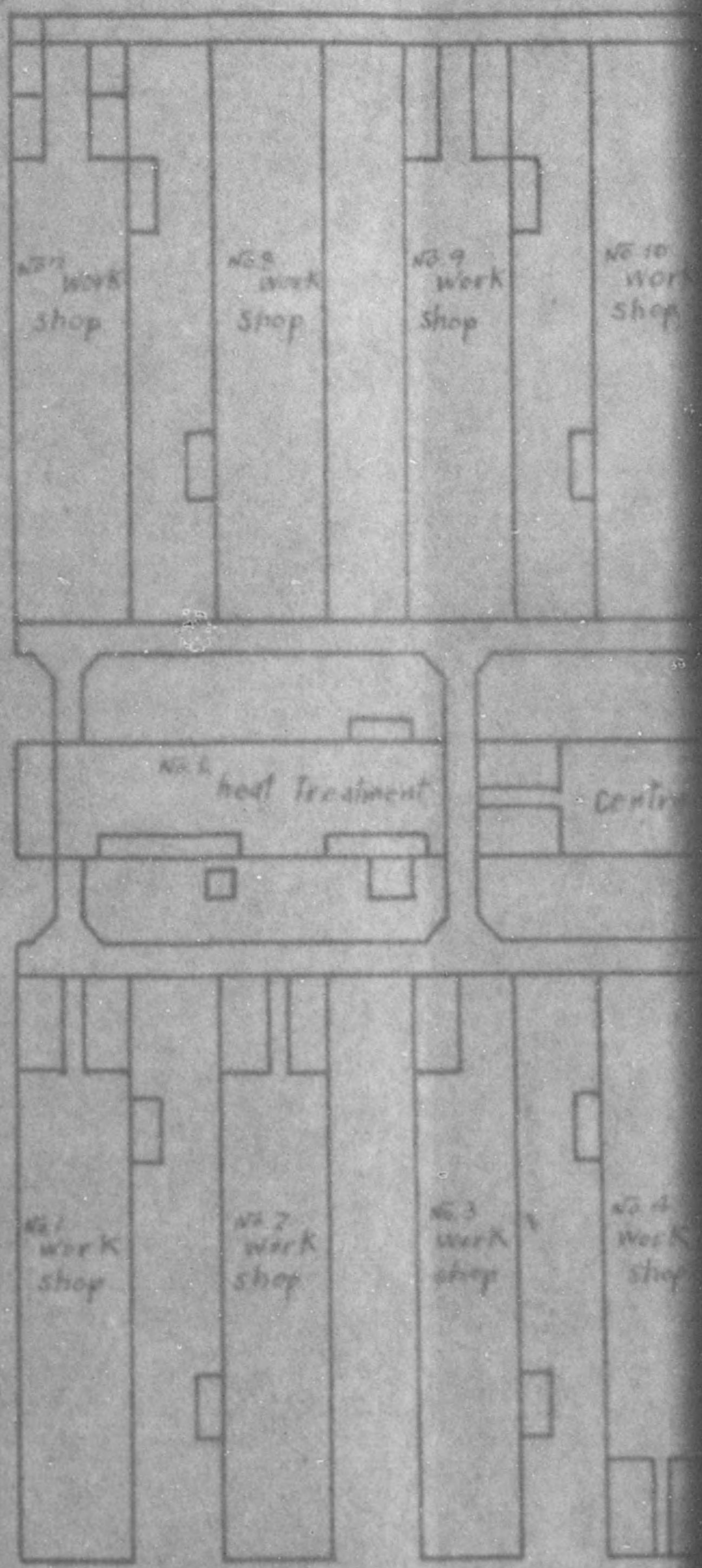
The Yamamura



For  
Tegama city

Ochimy

Water



775 013

The Yamamuro plant

scale 1/4200

