

THE 1936

RAMIKIN







Gift  
of  
Parsons Staff

EX  
LIBRIS



# COPYRIGHT

FLORENCE A. ARMSTRONG  
Editor-in-chief

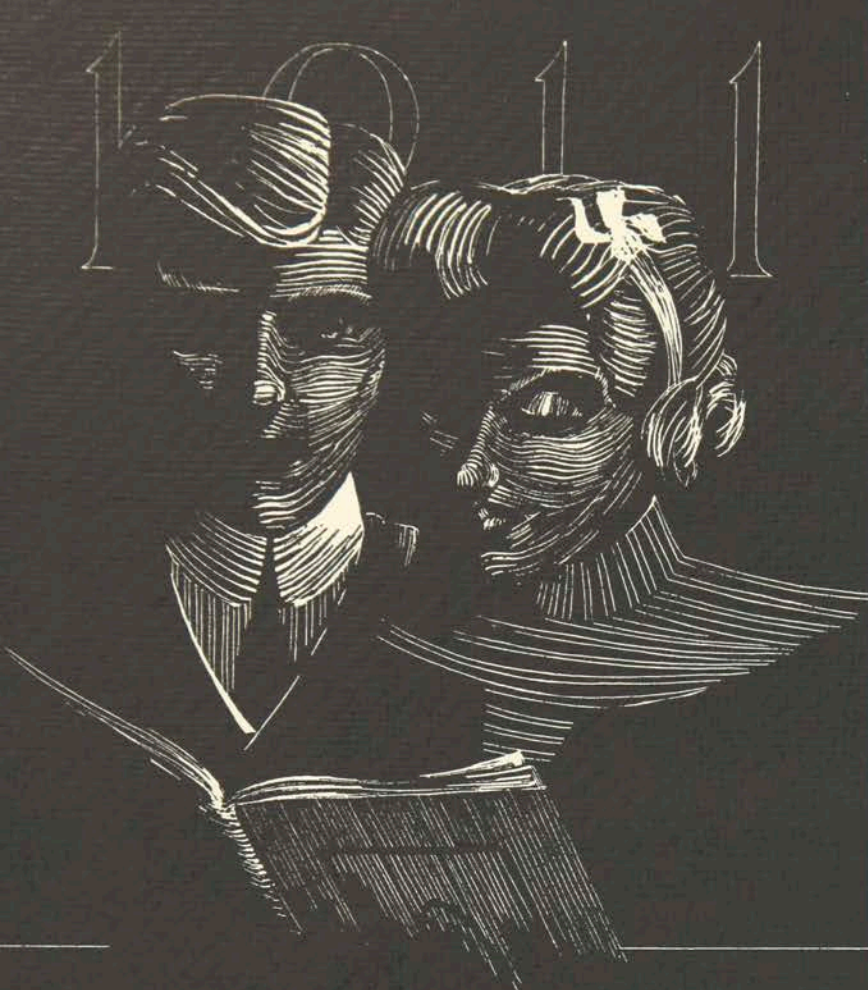
JOHN W. JORDAN  
Business Manager

ARTHUR N. SINCLAIR  
Art Editor





THE 1936  
RAMIKIN



ARTHUR  
NEILSON  
SINCLAIR

THE  
1936  
RAMIKIN



TWENTY - FIFTH  
ANNIVERSARY  
ISSUE

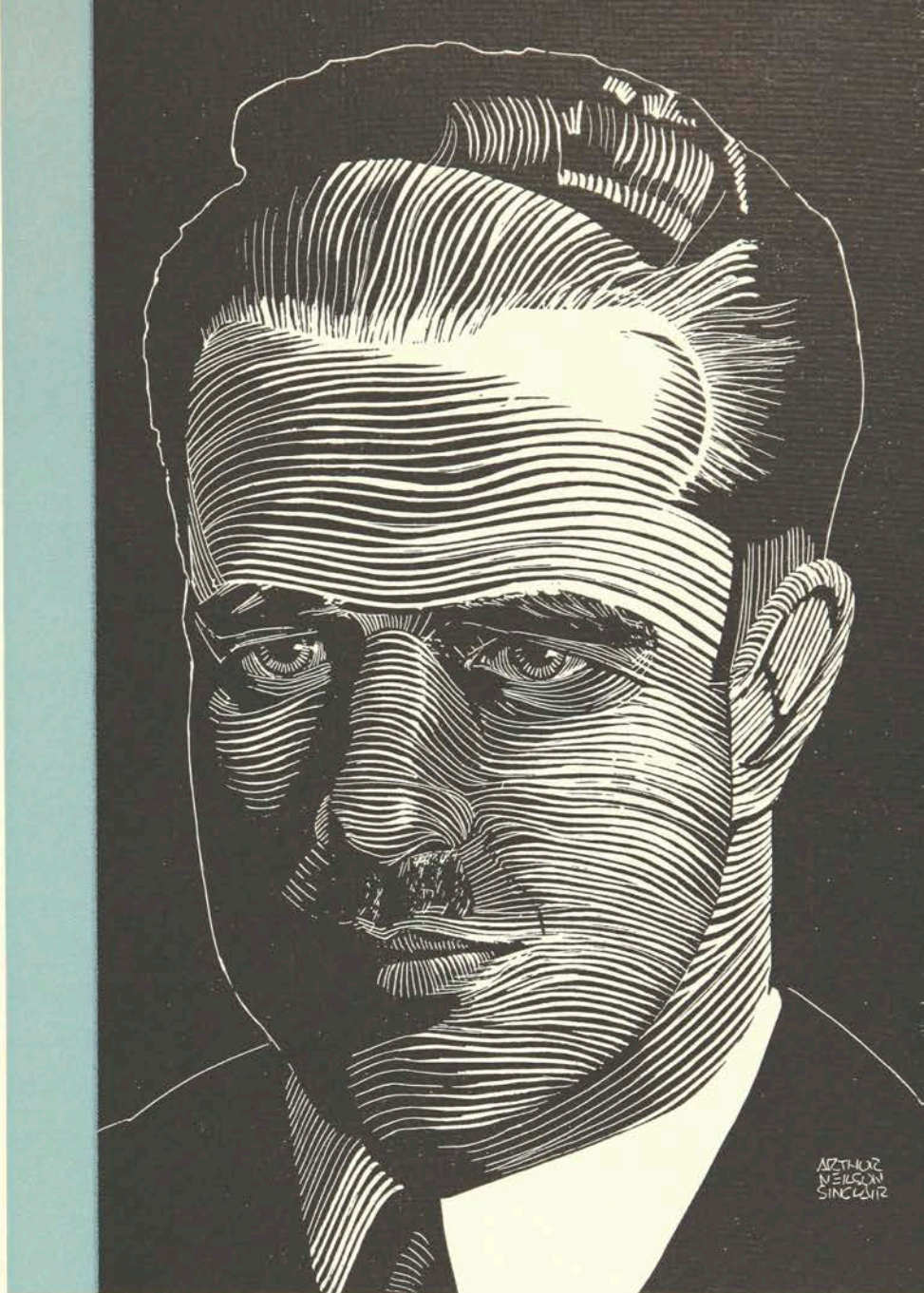
PUBLISHED BY  
THE RAMIKIN STAFF OF  
THE ROCHESTER ATHENAEUM  
AND MECHANICS INSTITUTE  
ROCHESTER, N. Y.





## F O R E W A R D

The "Ramikin" Staff of nineteen hundred and thirty-six, with the co-operation of the faculty and student body, has striven to record the history of the past year at Mechanics Institute, and presents this, the twenty-fifth volume of "Ramikin." In these years past, many changes have taken place in the administration and activities of the Institute. Vision and action have been expressed in the educational field by the inauguration of individualized education; school activities have been broadened and revised; and now we present the twenty-fifth written chronicle of this history, which was first given as the M. I. book. Therefore, it is hoped that this volume will remain a permanent record of the achievements of the year nineteen hundred thirty-five—thirty-six and will become a mile-stone in the annals of the Institute. To the faculty, the undergraduates and the alumni, we offer this, the nineteen thirty-six Ramikin.



MARK ELLINGSON

## DEDICATION

To Mark Ellingson, whose leadership and friendly counsel have given him a lasting place in the memories of all, we dedicate this book.

12778

# CONTENTS

VIEWS

ADMINISTRATION

STUDENTS

STUDENT LIFE



WORLDWIDE MARK

DEDICATION



VIEWS

# CONTENTS

## VIEW

### ADMINISTRATIVE

### STUDENTS

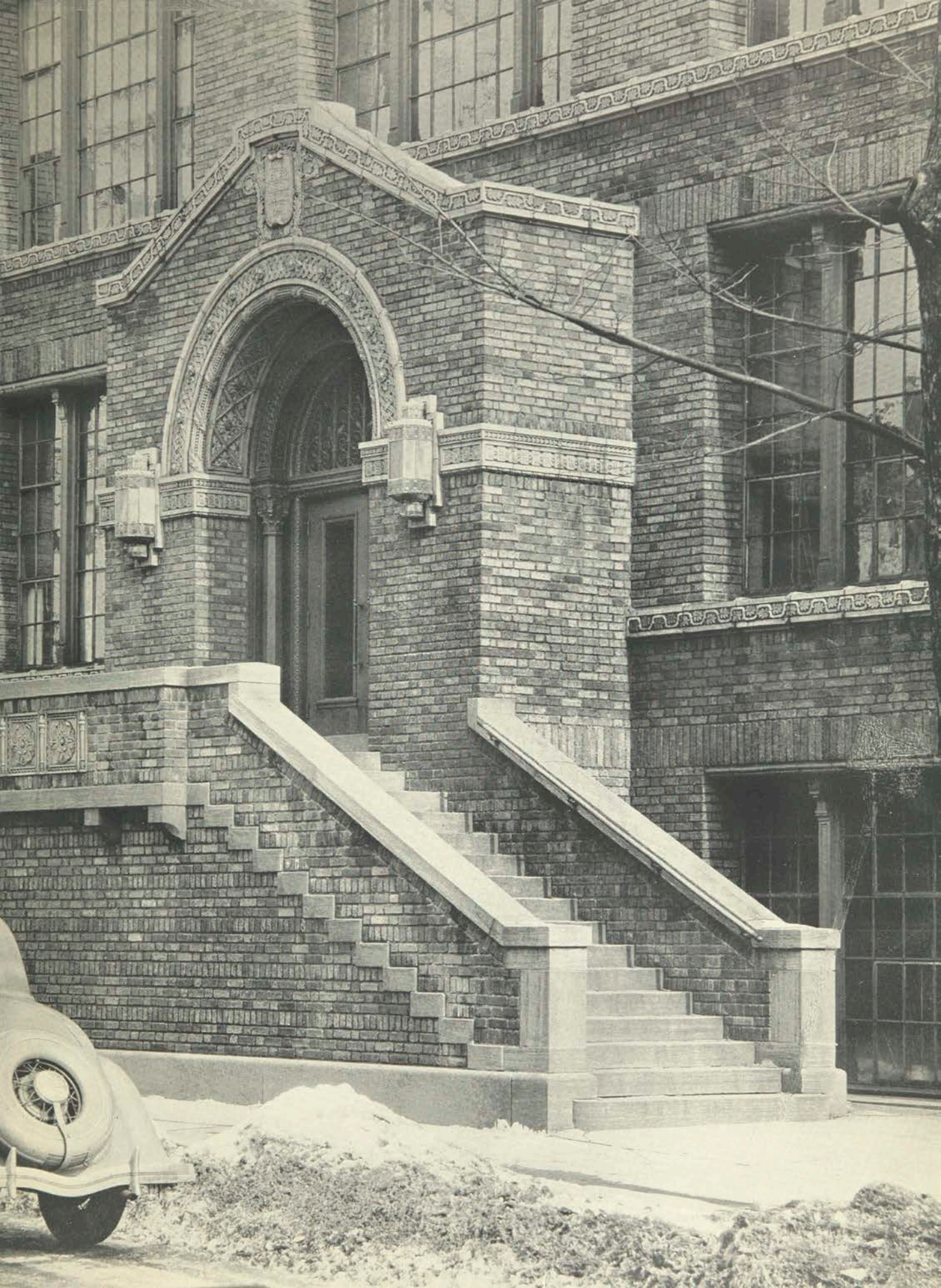
### TEACHERS

### INDEX



VIEW 2

BEVIER



CHAPEL





PRACTICE HOUSE



EASTMAN

# MECHANICS INSTITUTE



INSTITUTE  
FOUNDED 1885  
BUILDING  
ERECTED 1900

# BOARD OF DIRECTORS

Arthur W. Beale,  
Vice-President and Treasurer, Beale Cons. Co.

Mrs. Fannie R. Bigelow,  
Director, Baden Street Settlement

John P. Boylan,  
President, Rochester Telephone Corp.

Herbert W. Bramley,  
Vice-President, Sibley, Lindsay & Curr Co.

Theodore C. Briggs,  
Vice-President, Lawyers Co-operative Pub. Co.

Kendall B. Castle,  
Attorney

Albert K. Chapman,  
Assistant Vice-President, Eastman Kodak Co.

Brackett H. Clark,  
Secretary, Cochrane-Bly Mfg. Co.

George H. Clark,  
Treasurer, Mechanics Institute  
Director, Eastman Kodak Co.

Royal S. Copeland,  
United States Senator from New York

A. Edwin Crockett,  
Manager, Industrial Management Council,  
Chamber of Commerce

Mrs. C. Schuyler Davis

M. Herbert Eisenhart,  
President, Bausch & Lomb Optical Co.

Charles K. Flint,  
General Manager, Kodak Park Works,  
Eastman Kodak Co.

James E. Gleason,  
President, Gleason Works

Edward A. Halbleib,  
President, Delco Appliance Corp.

Ezra A. Hale,  
Secretary, Lawyers Co-operative Pub. Co.

William B. Hale,  
Secretary, Mechanics Institute  
President and Treas. E. R. Andrews Printing Co.  
Chairman of Board, Lawyers Co-operative Pub.  
Co.

Sol P. Heumann,  
President and Treas., Keller-Heumann & Thompson

P. Richard Jameson,  
Vice-President, Taylor Instrument Co.

Mrs. William B. Lee,  
President, Family Welfare Society of Rochester

Carl F. Lomb,  
Chairman, Board of Directors, Mechanics Insti-  
tute  
Vice-President, Bausch & Lomb Optical Co.

Frank W. Moffett,  
Vice-President, General Railway Signal Co.

Oscar H. Pieper,  
First Vice-President, Ritter Dental Co.

John D. Pike,  
President, John B. Pike & Son

John A. Randall,  
President, Mechanics Institute

Rush Rhees,  
President Emeritus, University of Rochester

Herman Russell,  
President, Rochester Gas & Electric Corp.

Benjamin G. Stallman,  
Contractor

Harry C. Stevenson,  
President, Rochester Folding Box Co.

Raymond L. Thompson,  
Treasurer, University of Rochester

Herbert S. Weet,  
Superintendent of Schools, Retired



JOHN A. RANDALL

PRESIDENT





# FACULTY

## APPLIED ARTS

Clements Horn  
Bond Ulp Culver Matson

## FOOD ADMINISTRATION

Barton Roberts Strickland Thurber Van Horne Thomason  
Lirgle Benedict Kirk Burkey

## RETAILING

Barton Johnston Thomason Fritz Koch  
Cunningham Hoke Hathaway Stampe

## INDUSTRIAL ARTS

Steidel Braden Biehler Bruins Tuites Barton  
Godfrey Brodie Stratton Brehm Donaldson Clark Criley Hagberg Koch  
Ellingson Johns Neblette Martin Bankowski Karker Morecock Thomason



#### APPLIED ARTS

Clifford M. Ulp, Supervisor  
Milton E. Bond  
Alling M. Clements  
Byron G. Culver  
Charles C. Horn  
J. Burnett Matson  
Minnie R. Wyman



#### SOCIAL SCIENCE

Calvin C. Thomason, Head  
George E. Barton, Jr.  
Warren C. Davis  
Georgie C. Hoke  
Hazel P. Howland  
Burton E. Stratton



#### DEPARTMENT OF DISTRIBUTION

Georgiana W. Hathaway, Supervisor  
George E. Barton, Jr.  
Ruth M. Cunningham  
Dorothea M. Fritz  
Georgie C. Hoke  
Horace W. Koch  
Anna May Johnston  
Jean M. Stampe  
Calvin C. Thomason

#### FOOD ADMINISTRATION

May D. Benedict, Supervisor  
Hazel F. Burkey  
Nan R. Lingle  
Dorothy D. Roberts  
Eunice Strickland  
Viola M. Wilson  
Elizabeth G. Van Horne  
Bertha Thurber  
Caroline M. Schleich  
Alice J. Kirk

#### SCHOOL OF INDUSTRIAL ART

Alfred A. Johns, Supervisor

#### CONSTRUCTION SUPERVISION

Herman Martin, Supervisor  
William A. Clark  
Herbert Bohacket

CLIFFORD M. ULP  
Applied Arts

MAY D. BENEDICT  
Food Administration

GEORGIANA W. HATHAWAY  
Distribution

ALFRED A. JOHNS  
Industrial Arts

#### MECHANICAL

Herman Martin, Supervisor  
Raymond M. Biehler  
Harold J. Brodie

Mary E. Gillard  
Richard Bruins  
Cyril Donaldson  
Sherman B. Hagberg  
Royal Weller

#### ELECTRICAL

Earl C. Karker, Head  
Earle M. Morecock, Co-ordinator  
Clarence E. Tuites

#### PHOTOGRAPHIC TECHNOLOGY

Mark Ellingson, Supervisor  
Frederick W. Brehm  
Jaroslav Kasan  
C. B. Neblette  
Martha G. Bonkowski

#### INDUSTRIAL CHEMICAL

Alfred A. Johns, Supervisor  
Ralph H. Braden



# ISH

In the Hebrew, this word for man means a being with his face turned upward.

When we are looking upward our lives will be tending upward. Have we in our three years spent at Mechanics Institute fulfilled the meaning of this word to the fullest extent? This is a changing world and every individual and institution must be constantly on the alert to discover new methods and means leading toward a richer, fuller life.

Until the time of our entrance at the Institute most of us were accustomed to having our educational program planned for us—one and all undertaking the same subjects and activities. But here we found a new era of instruction called "Individualization." We were given freedom in the choice of our classes, along with competent advice and guidance from supervisors and faculty members; we were helped to become better citizens and individuals by character records kept by each instructor and given us with friendly counsel.

Numerous outside activities were offered in every field—clubs formed with the view of broadening our knowledge in our chosen professions; varied sports offering competition with other institutions and teaching ideals of sportsmanship; and for those with a literary yearning, the publications. Our progress was limited only by ourselves—our abilities and our sincerity.

Have we taken full advantage of all these opportunities? If not we have no one but ourselves to criticize. Those who have, in future years, when we no longer tread these halls, will look back with pleasant memories and associations to those days when our lives were being moulded and we were being led upward and onward.

Can we say we have benefited, or do we feel as if something has slipped through our fingers which we can never grasp again? Only you and I as individuals can answer this question for ourselves, with a feeling of profit or loss.

FLORENCE A. ARMSTRONG

STUDENTS





# SENIOR OFFICERS



HARRY McCALL . . . . . President

JAMES LEARY . . . . . Vice-President

JOHN ARNOLD . . . . . Secretary

STANLEY WITMEYER . . . . . Treasurer

# APPLIED

WILLIAM JOHN ANDERSON  
77 Garson Avenue  
Rochester, New York

Glee Club 3; Psimar 3; Art League 1, 2, 3.



FLORENCE A. ARMSTRONG  
56 Charrington Road  
Rochester, New York

Ramikin 1, 2, 3, Assistant Editor 2, Editor-in-chief 3; Glee Club 1, 2; Dramatic Club 2; Art League 1, 2, 3.

HARRIET LOUISE BINGHAM  
31 Woodlawn Avenue  
Fairport, New York

Art League 1, 2, 3, President 2; Dramatic Club 1, 2; Ramikin Assistant Editor 3.



HARVEY H. CAPLIN  
1080 Monroe Avenue  
Rochester, New York

Glee Club 1; Art League 1, 2, 3.

EDWARD B. HENDERSON  
Churchville, New York

Art League 1, 2, 3, President 3; Dramatic Club 2, 3, Advertising Manager 2.



CHADBOURNE V. HICKEY  
Castile, New York

Art League 1, 2, 3, Social Chairman 3; Chi Epsilon Phi 2, 3; Glee Club 1.

W. HARRY HILL  
1689 Monroe Avenue  
Rochester, New York

Art League 1, 2, 3, Vice-President 2, Student Council 3; Dramatic Club Advertising Manager 3; Psimar 2; Ramikin 2.



JOHN W. JORDAN  
124 Croydon Road  
Rochester, New York

Dramatic Club Vice-President 1; Glee Club 1, 2, Treasurer 2; Ramikin Business Manager 3; Art League 1, 2, 3; Class Treasurer 1.

AVA L. KEYMEL  
Ontario, New York  
Art League 1, 2; Glee Club 1, 2.



JEANNE F. McMAHON  
598 Woodbine Avenue  
Rochester, New York

Art League 1, 2, 3.

# ARTS

# APPLIED

JOSEPH E. PIERCE  
174 Price Street  
Lockport, New York

Art League 2, 3.



ARTHUR NEILSON SINCLAIR  
47 Clayton Avenue  
Cortland, New York

Ramikin 2, 3; Assistant Art Editor 2,  
Art Editor 3; Art League 1, 2, 3; Treas-  
urer 2; Chi Epsilon Phi 2, 3; Secretary 3.

EMILY SLOCUM  
41 Kingsland Terrace  
Burlington, Vermont

Art League 1, 2, 3; Student Council 2,  
3; Dramatic Club 2, 3; President Dorm  
Council 3.



GEORGE B. VAN INWAGEN  
52 Savannah Street  
Rochester, New York

Art League 1, 2, 3; Glee Club 1; Dra-  
matic Club 3; Psimar 1, 2, 3.

FRANS JÖRGEN WETTERINGS  
151 Sunset Drive  
Brighton, New York

Art League 1, 2, 3; Ramikin 2; Wrest-  
ling 2.



STANLEY WITMEYER  
367 Jefferson Avenue  
Rochester, New York

Student Council 1; Art League 1, 2, 3;  
Varsity Basketball 1, 2, 3, Captain 2;  
Psimar 2, 3, Art Editor 3; "M" Club 2,  
3, Treasurer 2; Class Treasurer 3; Ad-  
vertising Manager Dramatic Club 1.

NOREIN MARY GRUBER  
Utica, New York

Psimar 1, 2; Ramikin 2; Art League 1,  
2, 3, Secretary and Treasurer 3.

# CHEMICAL

JOHN W. ARNOLD

Rochester, New York

Dramatic Club 2, 3, President 3; Manager Basketball 2; Class Secretary 3; Psimar 1, 2; MICA Club 1, 2, 3; Chi Delta Phi 1, 2, 3.



ALAN C. DENNISON

1306 Howard Avenue  
Utica, New York

Basketball 1, 2, 3; Glee Club 1, 2, 3; Phi Sigma Phi 1, 2, 3, Vice-President 3; Psimar Sport Editor 3; MICA 1, 2, 3.

JACK C. DENSE

876 Arnett Blvd.

Rochester, New York

Chi Beta Kappa 1, 2, 3; Basketball 1; Inter-fraternal Council 1, 2, 3, Secretary 2; MICA Club 1, 2, 3, Vice-President 2, President 3; Inter-fraternal Basketball 2, 3; Glee Club 1; Psimar Feature Editor 3.



CLARK DONOVAN

46 Sheldon Terrace  
Rochester, New York

Student Council 1, 2, 3, Secretary 2, President 3; Chi Beta Kappa 1, 2, 3; MICA Club 1, 2, 3; Psimar Feature Editor 3; Cheer Leader 1; Dramatic Club 3, Publicity Manager 3.

JOHN EDWIN EARLES

86 Nunda Blvd.

Rochester, New York



RAYMOND L. ESTES

Scottsville, New York

Pi Kappa Gamma 1, 2, 3, Vice-President 3; Band 1, 3; MICA Club 1, 2.

EDWIN HENNIK

31 Prescott Street

Rochester, New York

Phi Sigma Phi 1, 2, 3; MICA Club 1, 2, 3; Psimar 1.



DONALD N. HULBERT

Shortsville, New York

Pi Kappa Gamma 1, 2, 3, President 3; Inter-fraternal Basketball 1, 2, 3; Student Council, 2; MICA Club 1, 2, 3; Inter-fraternal Council Treasurer 3; Glee Club 1.

G. EDWIN JACKSON

327 Main Street

Penn Yan, New York



JAMES M. LEARY

141 South Fitzhugh Street  
Rochester, New York

Chi Delta Phi 2, 3, President 3; Wrestling 2, 3; M Club 3; Class Vice-President 3; Inter-fraternal Council 3.

# CHEMICAL

HOWARD M. LEE

Ellisburg, New York

Phi Sigma Phi 2, 3; Inter-fraternal Basketball 1, 2, 3; MICA Club 1, 2, 3; Glee Club 1.



# CHEMICAL

FRED J. SILLAY

Tallapoosa, Georgia

Manager Wrestling 1; Glee Club 1; MICA Club 1, 2, 3.

EMIL F. WALTER

60 Rockingham Street

Rochester, New York

Pi Kappa Gamma 1, 2, 3; Inter-fraternal Basketball 1, 2, 3; MICA Club 1, 2, 3.



LAWRENCE WEBSTER

South Livonia, New York

Glee Club 1, 2, 3; Treasurer 3; MICA Club 1, 2, 3.

# CONSTRUCTION SUPERVISION

ELTON B. LAKE

Ontario, New York

Builder's Society 1, 2, 3.



KENNETH NABER

225 Brower Road

Irondequoit, New York

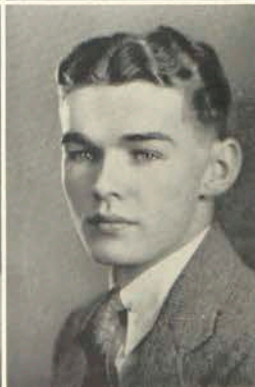
Chi Beta Kappa 1, 2, 3, Treasurer 2; Builders' Society 1, 2, 3, President 3.

FREDERIC J. SIGEL

637 Glenwood Avenue

Rochester, New York

Chi Beta Kappa 1, 2, 3, Treasurer 3; Builders' Society 1, 2, 3, Vice-President 3.



GEORGE E. SMITH

95 Knowlton Avenue

Kenmore, New York

Chi Beta Kappa 1, 2, 3; Glee Club 1, 2; Inter-fraternal Council 2; Inter-fraternal Basketball 1, 2, 3; Builders' Society 1, 2, 3; Class Treasurer 2; Assistant Manager Basketball 1; Manager Frosh Basketball 2.

# CONSTRUCTION

DONALD M. WALZER

476 Brooks Avenue  
Rochester, New York

Chi Beta Kappa 1, 2, 3, Secretary 2;  
Builders' Society 1, 2, 3, President 3.



# SUPERVISION

JAMES HALL

30 Church Street  
Owego, New York

Chi Delta Phi 1, 2, 3, Social Secretary  
2, Treasurer 3; Glee Club 1; Builders'  
Society 1, 2, 3; Inter-fraternal Basket-  
ball 3.

# ELECTRICAL

PHILIP L. ADAMS

North Manlius, New York

E. S. A. 2.



GRANVILLE F. BARNUM

508 Girard Avenue  
East Aurora, New York

Class Vice-President 1; Phi Sigma Phi  
2, 3, President 2; E. S. A. 1, 2, 3.



ROLLAND BRALEY

Newcomb, New York

E. S. A. 1, 2, 3; Basketball 1, 2, 3;  
M. Club 3, Secretary and Treasurer 3.



JOSEPH BURKHARD

92 Elmore Road  
Rochester, New York

E. S. A. 1, 2.



CHARLES J. FERRIS

Rochester, New York

E. S. A. 1, 3.



ARTHUR WILLIAM HALL

Taberg, New York

Chi Delta Phi 1, 2, 3, Secretary 3; Glee  
Club 1, 2.





# ELECTRICAL

## W. PARKER HAZELTON

Hudson, New York

E. S. A. 2, 3, President 3; Phi Sigma Phi 2, 3, Treasurer 2, President 3; Dramatic Club 2, 3, Vice-President 3; Inter-fraternal Council 3, Secretary 3.



# ELECTRICAL

## WALTER A. HICKOK

180 King Street  
Troy, Pennsylvania

E. S. A. 1, 2, 3; Psi Chi 1, 3; Glee Club 1; Band 3; Inter-class Baseball 1, 2, 3.

## ADDISON KENDALL

217 West 14th Street  
Elmira Heights, New York

E. S. A. 1, 2, 3; Chi Delta Phi 1, 2, 3, Corresponding Secretary.



## CHARLES H. OWEN, JR.

213 West 14th Street  
Elmira Heights, New York

E. S. A. 1, 2, 3; Chi Delta Phi 1, 2, 3; Inter-fraternal Basketball 1, 2, 3.

## LEON E. PALMER

Canton, Pennsylvania

Pi Kappa Gamma 1, 2; E. S. A. 1, 2, 3; Glee Club 1, 2, 3, Vice-President 2; Inter-fraternal Basketball 2.



## EDMUND J. PRINGLE

169 Paine Street  
Green Island, New York

Chi Beta Kappa 2, 3; E. S. A. 1, 2, 3, Vice-President 3.

## ALFRED B. ROBINSON

368 Underwood Avenue  
Elmira, New York

E. S. A. 1, 2, 3.



## JOSEPH TABER

West Oneonta, New York

Phi Sigma Phi 2, 3, Vice-President 3; E. S. A. 1, 2, Treasurer 2.

## GEORGE A. WESCOTT, JR.

Forest Home  
Ithaca, New York

E. S. A. 1, 2, 3; Phi Sigma Phi 1, 2, 3.



## EDWIN F. WOOD

332 Ravenwood Avenue  
Rochester, New York

Phi Sigma Phi 1, 2, 3, Secretary 2; E. S. A. 1, 2.

DONALD HERBISON

Plessis, New York

Wrestling: 1, 2, 3; E. S. A. 2, 3.

## FOOD ADMINISTRATION

WILMA S. BARTLETT

Waterloo, New York

Survey Club 1, 2, 3; Glee Club 1.



EVA C. BRANDT

931 Woodbine Avenue

Rochester, New York

Survey Club 1, 2, 3; Delta Omicron 1, 2, 3; Glee Club 1.



MARION J. BURTIS

479 Winton Road North

Rochester, New York

Survey Club 1, 2, 3; Sigma Kappa  
Delta 2, 3, Secretary 2.

ADELAIDE J. CLARK

Bergen, New York

Survey Club 1, 2, 3; Sigma Kappa  
Delta 1, 2, 3, Treasurer 2, President 3.

RUTH MURIEL COVERDALE

LeRoy, New York

Survey Club 1, 2, 3; Glee Club 1, 2, 3.



EDNA CROCKER

Middleport, New York

Survey Club 1, 2, 3; Sigma Kappa  
Delta 1, 2, 3; Glee Club 1.

# FOOD

ALICE M. ENDERS

Buffalo, New York

Survey Club 1, 2, 3; Glee Club 1;  
Student Council 1, 3; Inter-sorority  
Council 3; Alpha Psi 1, 2, 3, President 3.



# ADMINISTRATION

CATHERINE D. GARVEY

Olean, New York

Survey Club 1, 2, 3; Glee Club 1, 2, 3.

JEANETTE ALLEN HANSON

Craftsbury Common, Vermont

Survey Club 1, 2, 3; Glee Club 3.



LEDITHA A. JOHNSON

1562 Pratt Street

Elmira, New York

Survey Club 1, 2, 3; Glee Club 1;  
Alpha Psi 1, 2, 3, Vice-President 3.

DOROTHY C. KINGSLEY

105 Collingwood Drive

Rochester, New York

Survey Club 1, 2, 3; Delta Omicron  
1, 2, 3.



FRANCES M. LESTER

Clyde, New York

Survey Club 1, 2, 3; Glee Club 1, 2, 3.

KATHERINE P. MARSH

Scottsville, New York

Survey Club 1, 2, 3; Sigma Kappa  
Delta 1, 2, 3; Glee Club 1.



LOIS MARTIN

22 Lake View Terrace

Rochester, New York

Survey Club 1, 2, 3.

KATHLEEN McKAY

2202 Pierce Avenue

Niagara Falls, New York

Survey Club 1, 2, 3; Delta Omicron  
1, 2, 3; Dramatic Club 1, 2, 3.



RUTH CAROL MEINECKE

East Aurora, New York

Survey Club 1, 2, 3; Delta Omicron  
1, 2, 3; Glee Club 1, 2.

# FOOD

BEATRICE NELSON

Victor, New York

Survey Club 1, 2, 3; Glee Club 1;  
Sigma Kappa Delta 2, 3, Secretary 3.



# ADMINISTRATION

ELIZABETH GERTRUDE PALMER

Saratoga Lake, New York

Survey Club 1, 2, 3; Glee Club 1, 3.

VERNA HARRIET PARMELEE

LeRoy, New York

Survey Club 1, 2, 3.



ELLEN E. PERSONS

Delevan, New York

Survey Club 1, 2, 3; Glee Club 1; Sigma Kappa Delta 1, 2, 3, Vice-President 3; Inter-sorority Council 2, 3; Dorm Council 2, 3, Secretary 2, Vice-President 3.

ERMA PURHAM

Troy, Pennsylvania

Survey Club 1, 2, 3; Glee Club 3.



WILMA NAOMA RANDALL

Arlington, Vermont

Survey Club 1, 2, 3.

BEATRICE E. REED

242 Dartmouth Street  
Rochester, New York

Survey Club 1, 2, 3; Glee Club 2, 3;  
Ramikin Assistant Editor 2, 3.



ALICE M. RITCHIE

Geneva, New York

Survey Club 1, 2, 3; Glee Club 1, 2, 3.

ELLA MILDRED ROBBINS

Craftsbury Common, Vermont

Survey Club 1, 2, 3; Glee Club 3.



JENNIE RUMONT

58 Chestnut Street  
Cooperstown, New York

Survey Club 1, 2, 3; Glee Club 1.

# FOOD

## MARGARET ELLEN SHINGLE

Port Huron, Michigan

Survey Club 1; 2, 3; Social Secretary 1,  
Treasurer 2; Sigma Kappa Delta 1, 2,  
3; Vice-President 2; Dorm Council 1;  
Glee Club 1.



# ADMINISTRATION

## GERTRUDE STERLING

7 Far View Hill  
Rochester, New York

Survey Club 1, 2, 3; Sigma Kappa  
Delta 1, 2, 3.

## RUTH ALICE TAYLOR

Newfane, New York

Survey Club 1, 2, 3; Glee Club 1, 3.



## GEORGIANA TUTTLE

Hornell, New York

Survey Club 1, 2, 3; Delta Omicron 1,  
2, 3; Student Council 3; Inter-sorority  
Council 3; Dorm Formal Chairman 3.



## ELENORE WOOD

83 Central Avenue  
Fredonia, New York

Survey Club 1, 2, 3.

# MECHANICAL

## ALBERT DALEY

72 Lincklaen Street  
Cazenovia, New York

M. S. A. 1, 2, 3.



## CARL H. DIBBLE

Indian Falls, New York

Basketball 1, 2, 3; M. S. A. 3.

# MECHANICAL

SALVATORE F. DISCHINO

578 Smith Street

Rochester, New York

Glee Club 1, 2; Chi Epsilon Phi 2, 3;  
Inter-fraternal Basketball 2, 3.



EDWIN C. FOX

Apolachin, New York

Wrestling 1, 2, 3; Chi Delta Phi 1, 2, 3;  
Vice-President 3; M. S. A. 1, 2, 3.

WILLIAM HARRISON

New Hampton, New York

Glee Club 1; M. S. A. 1, 2, 3, Presi-  
dent 3.



EDWARD F. JANUS

111 Winbourne Road

Rochester, New York

M. S. A. 1, 2, 3; Glee Club 1, 2.

GORDON H. KENDALL

41 West Kirke Street

Chevy Chase, Maryland

M. S. A. 2, 3.



CLARK L. KING

10 Frederick Street

Malone, New York

M. S. A. 1, 2, 3; Glee Club 1.

RAYMOND LOCKWOOD

Ravena, New York

Glee Club 1, 2; Wrestling 3; M. S. A.  
1, 3; Pi Kappa Gamma 2, 3, Secre-  
tary 3; Inter-fraternal Council 3.



ALFRED J. MORLANTE

804 Exchange Street

Rochester, New York

Chi Epsilon Phi 1, 2, 3, President 3;  
Inter-fraternal Council 2, 3; Student  
Council 3; Wrestling 2, 3; M. S. A. 1,  
2, 3.

RALPH PARKER

Pittsford, New York

M. S. A. 1; M Club 3; Basketball 1,  
2, 3.



MAYLON F. RIKER

Ontario Center, New York

M. S. A. 1, 2, 3.

# MECHANICAL

# MECHANICAL

ANTHONY J. SCHILIRO

156 Ackerman Street  
Rochester, New York

Glee Club 1, 2; M. S. A. 1, 2, 3; Secretary 2; Psimar 2, Circulation Manager 2; Initiation Committee 2, 3; Junior Prom Committee 2; Freshman Ball Committee 1.



THOMAS J. TIERNAN

3614 Lake Avenue  
Rochester, New York

M. S. A. 1, 2, 3.

ROBERT W. TODD

Oriskany Falls, New York

M. S. A. 1, 2, 3.



JOHN M. WEIDER

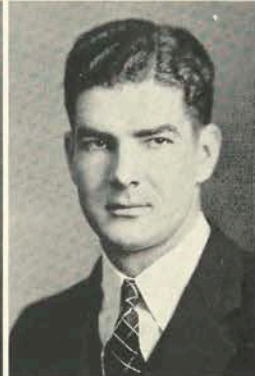
51 Seneca Parkway  
Rochester, New York

M. S. A. 1, 2, 3, Vice-President 3.

JEROLD L. WELCH

Bergen, New York

Wrestling 1, 2, 3, Captain 3; Glee Club 1, 2, 3; M Club 3; M. S. A. 1, 2, 3; Student Council Representative 3; Initiation Committee 2, 3; Psimar 2, 3, Sports Editor 3; Junior Prom Committee 2.



C. EDWARD WOLVERTON

Trumansburg, New York

M. S. A. 1, 2.

DONALD L. BISHOP

Bridgewater, New York

M. S. A. 1, 2; Chi Epsilon Phi 2, 3.

# PHOTO

## BETTY ANDERSON

Randolph, New York

Delta Omicron 1, 2; Camera Club 1, 2; Dorm Council 2.



## GEORGE BALL

9 Daisy Street

Rochester, New York

Camera Club 1, 2, President 2.

## MARLOWE E. KIRKENDALL

Clemons, Iowa

Camera Club 1, 2; Chi Beta Kappa 1, 2; Cheer Leader 1.



## HARRY McCALL

Logansport, Indiana

Chairman Frosh Social Committee; Chi Beta Kappa 1, 2, Vice-President 2; Ramikin 1; Camera Club 1, 2; Psimar Business Manager 2; President Senior Class.

## RUDY POLAK

711 Jackson Avenue

Glenside, Ardsley, Pennsylvania

Chi Beta Kappa 1, 2; Wrestling 1, 2; Camera Club 1, 2, Treasurer 2; Dramatic Club 2; Glee Club 2; Psimar 1, 2.



## ALBERT SCHICK

656 Averill Avenue

Rochester, New York

Camera Club 1, 2, Secretary 2.

## STANTON SINGER

52 Atlantic Avenue

Rochester, New York

Camera Club 1, 2.



## HOUGHTON STEVENS

Corning, New York

Chi Beta Kappa 1, 2, Pledge Master 2; Camera Club 1, 2; Psimar 2; Interfraternal Basketball 2; Dramatic Club 1, 2; Band 2; Wrestling 1; Glee Club 1, 2, President 2.

## NATHAN S. TILLEY

Holyoke, Massachusetts

Dramatic Club 1, 2; Glee Club 1, 2; Camera Club 1, 2; Student Council 2; Psimar 1; Co-editor-in-chief 2; Chi Beta Kappa 1, 2.



# TECH



REG BENNETT  
281 Pelham Road  
Rochester, New York

Camera Club 1, 2.

STEVE PROPOTNICK  
Chisholm, Minnesota

VICTOR H. SANDAK

1016 Beverly Road  
Brooklyn, New York

Camera Club 1, 2; Chi Beta Kappa 1;  
Wrestling 1.

PAUL WOLK

59 Park Avenue  
Rochester, New York

Wrestling 1; Camera Club 1, 2.

RETAILING

LEONE H. ARMES

Gowanda, New York  
Delta Omicron 1, 2, 3; Inter-sorority  
Council 2, 3; Glee Club 1, 2; Psi-  
mar 3.



HESTER R. AVERY

Earlville, New York  
Delta Omicron 1, 2, 3, Secretary 2;  
Retail Bulletin 1, 2, 3, Assistant Edi-  
tor 2, 3; Retail Association 1, 2, 3.



GRACE BENNETT

Victor, New York  
Retail Association 1, 2, 3.



LYNN M. BURKHARD

92 Elmore Road  
Rochester, New York  
Glee Club 1.



EDITH L. CRANE

Fairport, New York  
Glee Club 1, 3; Dramatic Club 1, 2, 3;  
Retail Association 1, 2, 3.



GEORGE W. ELLIOTT

844 Ridgeway Avenue  
Rochester, New York  
Retail Association 1, 2, 3; Dramatic  
Club 1; Glee Club 1.



# RETAILING

PAULINE FROLICH

Middleport, New York

Glee Club 1, 2; Dramatic Club 1, 2, 3; Phi Upsilon Phi 3; Retail Bulletin 1, 2, 3.



ALICE R. FURMAN

324 Rugby Road  
Brooklyn, New York

Retail Association 1, 2, 3; Glee Club 1.

MARY ELLEN GILES

Jamestown, New York

Delta Omicron 1, 2, 3; Student Council 2, 3; Psimar 1, 2; Co-editor-in-chief 3; Dramatic Club 1, 2.



RUTH E. GUSTAFSON

Rochester, New York

Delta Omicron 1, 2, 3; Treasurer 2, 3; Retail Bulletin 2, 3, Editor 3; Student Council 3; Retail Association 1, 2, 3.

MARGUERITE JEAN HART

Industry, New York

Dramatic Club 1, 2, 3; Delta Omicron 3.



ROSE L. HENDERSON

Churchville, New York

Retail Bulletin 1, 2, 3, Editor-in-chief 2; Retail Association 1, 2, 3; Social Chairman 2.

MARGARET IGGLEDEN

Rochester, New York

Dramatic Club 2, 3; Glee Club 1; Retail Bulletin 1, 2, 3; Editor Student Handbook 2; Retail Association 1, 2, 3; Ramikin 3.



PRISCILLA S. JENKINS

Cortland, New York

Glee Club 1, 2, President 2; Delta Omicron 3; Retail Bulletin 1; Psimar 1, 3; Retail Association 1, 2, 3; Intersorority Council 2; Dorm Council 1.

MARION R. JOHNSON

Niagara Falls, New York

Delta Omicron 1, 2, 3, Secretary 3; Retail Bulletin 3; Retail Association 1, 2, 3.



FRANCES C. KLENKE

40 Genesee Park Boulevard  
Rochester, New York

Phi Upsilon Phi 1, 2, 3, Alternate Secretary 3; Dramatic Club 1, 2; Retail Association 1, 2, 3.

# RETAILING

JEANNETTE KNAPP  
Syracuse, New York



ELEANOR M. MEADE  
318 Thomas Avenue  
Rochester, New York

Glee Club 1; Phi Upsilon Phi 1, 2, 3,  
Secretary 2, Vice-President 3; Inter-  
sorority Council 3.



DORIS AUDREY NETH  
144 Virginia Avenue  
Rochester, New York

Glee Club 3.



MARIAN REAMER  
Batavia, New York

Glee Club 1; Alpha Psi 3; Class Pres-  
ident 2; Student Council 2, 3; Retail  
Bulletin 1.



JANE S. SCOTT  
14 Castlebar Road  
Rochester, New York

Glee Club 1; Alpha Psi 1, 2, 3.



# RETAILING

RUTH B. MARQUART  
Orchard Park, New York

Delta Omicron 1, 2, 3; Dramatic Club  
3; Student Council 3; Retail Associa-  
tion 1, 2, 3.



MARTHA G. MOORE  
1145 Monroe Avenue  
Rochester, New York

Phi Upsilon Phi 1, 2, 3, Treasurer 3;  
Retail Association 1, 2, 3.



PHYLLIS A. PIERCE  
Canandaigua, New York

Dramatic Club 1, 2, 3; Retail Associa-  
tion 1, 2, 3.



EVELYN A. REHBEIN  
Pittsford, New York

Phi Upsilon Phi 1, 2, 3; Treasurer 2,  
President 3; Inter-sorority Council 2,  
3; Secretary and Treasurer 3; Dramatic  
Club 1; Ramikin 3; Retail Association  
1, 2, 3, Treasurer 2.



MAYALENE STEWART  
Geneva, New York

Delta Omicron 1, 2, 3; Retail Associa-  
tion 1, 2, 3.



# RETAILING

## LEANORE E. STROUSE

Elmira, New York

Glee Club 1, 2; Delta Omicron 1, 2, 3; Retail Bulletin 1, 2, 3; Student Council 3; Dramatic Club 2, 3; Retail Association 1, 2, 3.



# RETAILING

## ELIZABETH THACHER

Hornell, New York

Delta Omicron 1, 2, 3, Corresponding Secretary 2, President 3; Inter-sorority Council 3, President 3; Dorm Council 3; Retail Bulletin 1; Retail Association 1, 2, 3.

## GLADYS B. URQUHART

1858 Willow Avenue

Niagara Falls, New York

Delta Omicron 1, 2, 3, Vice-President 3; Glee Club 1; Retail Bulletin 1, 2, 3; G. A. A. Treasurer 2.



## MURIEL L. WILLIAMS

15 Elm Street

Batavia, New York

Glee Club 1; Delta Omicron 2, 3, Secretary 3.

## CAROL D. BAKER

35 Fourth Avenue

Fairport, New York

Phi Upsilon Phi 2, 3; Retail Association 1, 2, 3.

## HAROLD E. HEATH

Newark, New York

Glee Club 1; Freshman Basketball 1; Chi Delta Phi 1, 2, 3; Fraternity Basketball 2, 3; Inter-fraternal Council 1, 2, 3, President 3; Retail Association 1, 2, 3.

## HELEN H. HONISS

108 Crosman Terrace

Rochester, New York

Retail Association 1, 2, 3.



RAMIKIN  
INC.

F. ARMSTRONG PROP.

AWK

KING OF  
LIBERIA

SPEECH  
SPEECH  
SPEECH  
SPEECH  
SPEECH  
SPEECH  
SPEECH  
SPEECH  
SPEECH

TYPewriter

Jordan  
VOTE FOR  
HICKEY

FRANS  
JØRGEN  
WETERRINGS



P.P. PIERCE  
BARN &  
PORTRAIT  
PAINTING

HOTEL  
ZIBERIA  
VERY  
EXCLUSIVE

WANTED!  
GOOD SIGN  
PAINTER?  
HENDERSON Z.Z.

WANTED  
(1) ONE (1)  
MODEL  
P.P. PIERCE

HENDERSON  
SIGN  
SHOPPE

ES  
+  
G.B.V.  
I AM A PRO-  
FESSIONAL  
SIGN  
PAINTER  
- HENDERSON

WHAT  
TH...

NOCK  
NOCK  
NOCK

NOCK  
NOCK  
NOCK

E.H.

E.H.

E.H. B.B.

# SENIOR CLASS HISTORY

Class of 1936!!! Just a few words but they mean a lot to us. They represent three good years at school, good friends gained, good times had—these we will never forget.

It's fun to look back through memory's door and think over the things we have done. Our Freshman year started with the usual hazing week. Yes, we suffered the worst things the upperclassmen could think up for the "Freshies". It was taken in grand spirit and the fellows did get even with their big brothers at the end of Initiation.

The "Frosh Mixer", held in October of 1933 was our first social event of the year. We enjoyed it and made many good friends. The "Frosh Snowball Dance", held in December in the Pompeian Room of the Hotel Seneca was talked of long afterwards. We were the most social minded freshman class in many years. Yes, we were proud of the reputation of being up and coming. The Freshman class participated in all the student activities for which they were eligible and did their part to make the school year a success.

Our Junior year—one year behind us—one year ahead of us. Our big event of the year was the Junior Prom. It can go down on the R. A. M. I. records as one of the most successful dances ever sponsored by the school. It was held in the Powers Hotel Ballroom and featured the music of Bennie Griffin and his Southerners. The records of Juniors as members of the wrestling and basketball squads were outstanding.

As Seniors our Dinner Dance was held in March. This social event helped to round out the activities of the school year.

June—the Senior Ball and Commencement. Yes, we take pride in having completed our work here but we are loath to say "farewell!" to our comrades of three years spent within the walls of M. I.

# JUNIOR OFFICERS



DONALD LISCHER . . . . . President

ELIZABETH SNYDER . . . . . Vice-President

VIVIAN SCHERER . . . . . Secretary

JACK TOOMEY . . . . . Treasurer





Thomas Stork Seltz Van Vlack Hineline Blount  
 Mettler Clark Benedict Dudley Nelson Snyder Edmunds Brownell Appleyard  
 Betts Jones Smith Alt Wilson Chamberlain Clive Baker Hendryx Marotta  
 Atkinson Waltz Allen Henion Becker

# JUNIOR

Allen, Richard  
 Alt, Helena  
 Anderson, Norman  
 Appleyard, Elizabeth  
 Atkinson, Roy  
 Bailey, Rebecca  
 Baker, Betty  
 Baker, Helen  
 Barkalow, James  
 Baumann, Richard  
 Beale, Elizabeth  
 Becker, Clarence  
 Benedict, Grace  
 Bennett, Ruth  
 Betts, Elizabeth  
 Blount, George  
 Borland, James  
 Bourcey, Charlotte  
 Boyce, Donald  
 Brannigan, Mary  
 Britton, Jean  
 Brownell, Harriet  
 Brown, Vincent

Burnett, Evelyn  
 Burns, Willard  
 Cannon, William  
 Caplan, David  
 Chalker, Barbara  
 Chamberlain, Barbara  
 Clark, Elizabeth  
 Cline, Gertrude  
 Collins, Helen  
 Conlin, Francis  
 Deuel, Rachel  
 De Zeng, Henry  
 Dudley, Helen  
 Echter, Alice  
 Edgett, Mary  
 Edmunds, Doris  
 Edwards, Charles  
 Eidam, Marcella  
 Evans, Charles  
 Ferris, Robert  
 Field, Eugene  
 Gage, Mary Alice  
 Garrett, Millard

Geyer, Charles  
 Gleason, Edward  
 Hendryx, Dorothy  
 Henion, Egbert  
 Hineline, Richard  
 Hoffer, Fred  
 Hoffman, Grace  
 Holtby, Robert  
 Horn, Claire Mary  
 Howard, Margery  
 Howell, Jean  
 Jennings, James  
 Jones, Lucille  
 Jordan, Caroline  
 Kanter, Dorothy  
 Karche, Samuel  
 Karle, Marion  
 Keeney, Ruth  
 Kellogg, Harlan  
 Knowles, Fred  
 Krajowsky, Michael  
 Lapp, Marguerite  
 Le Baron, Robert



Naylor	Toomey	Lischer	Sheremeta	Miller	Fields	Edwards	Gleason	Prytula	
Sterling	Waterman	Howard	Horn	Scherer	Brownell	Reed	Orzechowski	Keeney	Woodley
	Barkalow	Bailey	Edgett	Van Hyning	Keymel	Baker	Echter	Spoooner	Simmons
		Swanson	Burns	Cannan	Miller	Markham	Pike		

# CLASS

Leckinger, William  
 Leek, Roberto  
 Lischer, Donald  
 Lockwood, Donald  
 Loysen, Grace  
 Mabbett, Arther  
 Markham, Harold  
 Marotta, Ida  
 Marquardt, William  
 Morgan, Ronald  
 Means, Mary Ellen  
 Messerschmitt, Frederick  
 Mettler, Ione  
 Miller, Harold  
 Miller, James  
 Moore, Mildred  
 Morton, Grace  
 Naylor, Bernice  
 Neivert, Leonard  
 Nelson, Rachel  
 Olsen, Helen  
 Orzechowski, Leona

Paquin, Carolyn  
 Payne, Newel  
 Pike, Earl  
 Pike, Richard  
 Pownall, John  
 Prytula, Morris  
 Reed, Beatrice  
 Reid, Elizabeth  
 Resseguie, Helen  
 Robinson, Mary  
 Roth, Charles  
 Rowley, Janet  
 Seltz, Richard  
 Scherer, Vivian  
 Scofield, Frank  
 Shafer, Barbara  
 Shafran, Thomas  
 Shea, William  
 Sheremeta, Peter  
 Simmons, Milton  
 Smith, Pauline  
 Snyder, Elizabeth

Spooner, Lewis  
 Sterling, Scott  
 Stork, Louis  
 Swanson, Theodore  
 Terwilliger, Dorothy  
 Thomas, Harris  
 Tischer, Katharine  
 Toomey, Jack  
 Van Hyning, Vena  
 Van Vlack, Norman  
 Van Zandt, Durwood  
 Walsh, Edward  
 Waltz, O. Hibbard  
 Ward, Ellen  
 Waterman, Sylvia  
 Wend, Katherine  
 Williams, Margaret  
 Wilson, Jessica  
 Woodley, Margaret  
 Wright, Mary  
 Yager, George  
 Yerden, Myles

# JUNIOR CLASS HISTORY

Two years have passed since our first experience of wandering through the halls with the anticipation of conquering the intellectual barriers placed before us. We met and absorbed all that the school life had to give; studies, sports, and true fellowship.

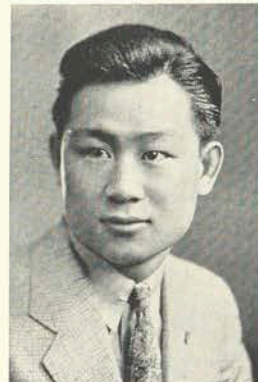
During our freshman year our enthusiasms were directed to the "Frosh Frolic", the event of the year at which the meager frosh was "King", to the inter-scholastic activities, social functions, and fraternities and sororities. The rest of the time was spent in seeing that we spoke to and observed all the upper classmen.

Then came our Junior year. Our first duty was to see that the poor Freshmen did not get lonesome for lack of attention. One of our means of doing this was the "Big Brother and Sister" plan of acquainting freshmen with upperclassmen. Another means was the new sports program started to get students better acquainted with each other. In this program the number who could participate was not limited to teams but open to everyone wishing to join. This program included bowling, dancing, swimming, and many other sports.

The gala event of the year was the Junior Prom held in the spacious Powers Hotel Ballroom to the enticing rhythm of Johnny Grady and his orchestra. All who attended will hold its memories for a long time, for everyone enjoyed it to the utmost.

The Junior Class ends a most entertaining and enjoyable year, looking forward to the continuance of the good will and cooperative feeling built up in our first two years, throughout our Senior Year and into our lives in the other world to conquer.

# FRESHMAN OFFICERS



MORTON SWEENEY . . . . . President

VINCENT BROWN . . . . . Vice-President

LYON CHAR . . . . . Treasurer



Emens Besnecher Stoddard Gordon Curtis Carmody McLaren Nichols  
 Flannagan Travis Westlake Smith Duncan Mowchan Blair Muxworthy Waldron

# FRESHMAN

Adsit, J.  
 Anderson, A.  
 Anthonson, A.  
 Anthonson, L.  
 Atkinson, W.  
 Augustin, J.  
 Batchelder, J.  
 Bauer, R.  
 Bauml, R.  
 Behnk, G.  
 Bell, A.  
 Besnecher, L.  
 Biccum, N.  
 Bierbrauer, E.  
 Bigelis, W.  
 Bills, A.  
 Blain, F.  
 Bolton, M.  
 Borden, J.  
 Boyce, C.  
 Brancroft, V.  
 Brandt, R.  
 Brasser, B.  
 Brewer, G.  
 Bridgens, M.  
 Brodt, C.  
 Brooks, P.  
 Brown, V.

Brule, J.  
 Bucher, E.  
 Budney, E.  
 Bunting, H.  
 Burke, E.  
 Burnes, M.  
 Burritt, E.  
 Burroughs, E.  
 Butler, G.  
 Caffery, M.  
 Calkins, S.  
 Carlson, D.  
 Carmody, J.  
 Castellano, J.  
 Cesarano, L.  
 Chapin, D.  
 Char, L.  
 Clare, J.  
 Clark, R.  
 Collins, E.  
 Compton, E.  
 Cordaro, J.  
 Corsiglia, J.  
 Cory, W.  
 Coyne, E.  
 Crook, E.  
 Curtis, D.  
 Curtiss, M.

De Carlo, A.  
 Degree, J.  
 Densberger, P.  
 Derso, P.  
 Duncan, L.  
 Dunwell, R.  
 Eisentrager, L.  
 Elam, M.  
 Elliott, W.  
 Emens, A.  
 Eno, R.  
 Erickson, L.  
 Estes, M.  
 Etu, J.  
 Foseer, G.  
 Ficker, R.  
 Fink, A.  
 Fishluck, C.  
 Fister, J.  
 Fitz Simons, S.  
 Flanagan, A.  
 Forgensie, J.  
 Fox, W.  
 Gabler, F.  
 Garrison, S.  
 Garvin, B.  
 Giesa, R.  
 Gillespie, M.

Gislason, M.  
 Gordon, L.  
 Goy, M.  
 Gray, J.  
 Greenbaum, G.  
 Guardia, F.  
 Haier, M.  
 Halbleib, K.  
 Hale, E.  
 Hall, M.  
 Harris, W.  
 Harvey, E.  
 Harvey, H.  
 Henry, H.  
 Heyner, K.  
 Hill, M. R.  
 Hooper, W.  
 Houghton, W.  
 House, L.  
 Hungerford, B.  
 Inglis, M.  
 Iuvino, M.  
 Jakob, F.  
 Johnson, R.  
 Kabelac, H.  
 Kennedy, D.  
 Kingsburg, J.  
 Kleifgen, R.



Corsiglia Char Sorvari Johnson Mumford Brodt Wilson Roberts  
 Sheff Carlson Wetmiller Cesarano Harvey Bierbrauer Meier Forgenzie Sibley Waldorf  
 Langdon Heyner Burrows Sherman Curtis

# CLASS

- |                |                  |                |                 |
|----------------|------------------|----------------|-----------------|
| Knight, H.     | Munford, R.      | Rose, L.       | Swope, J.       |
| Kopczynski, J. | Mutch, B.        | Rosenberg, L.  | Tanner, D.      |
| Kordt, H.      | Muxworthy, N.    | Ruderisch, A.  | Thorssen, B.    |
| Krenz, W.      | Naas, E.         | Sadden, H.     | Tomasso, A.     |
| LaVenture, G.  | Nichols, D.      | Schleich, C.   | Toms, G.        |
| Lawton, F.     | Nichols, D.      | Segal, V.      | Townsend, R.    |
| Leave, R.      | Palmer, J.       | Semple, F.     | Travis, A.      |
| Loomis, A.     | Palmer, S. L.    | Sheff, L.      | Trencher, G.    |
| Lord, R.       | Parker, G.       | Sherman, R.    | Troy, J.        |
| Lustyk, L.     | Paterson, R.     | Shuler, J.     | Tucker, K.      |
| MacConnell, R. | Pearson, T.      | Sibley, R.     | Ulp, J.         |
| MacLaren, D.   | Pease, C.        | Sloan, H.      | Van Amburgh, M. |
| March, R.      | Penarites, J.    | Smallridge, B. | Van Order, E.   |
| Marks, G.      | Petzke, J.       | Smith, B.      | Van Vlack, L.   |
| Martin, M.     | Pfomer, G.       | Smith, R.      | Van Vleet, H.   |
| Marvin, B.     | Picora, V.       | Soeder, A.     | Verna, D.       |
| Mathews, M.    | Pietrantonio, J. | Sorvari, A.    | Vunck, S.       |
| Matteson, I.   | Poradosky, P.    | Sprague, A.    | Wagor, L.       |
| Mattison, J.   | Preston, M.      | Sprague, F.    | Waldorf, L.     |
| McLaren, J.    | Price, J.        | Stainton, M.   | Waldron, A.     |
| Maxwell, C.    | Price, M.        | Stallman, H.   | Walker, R.      |
| May, F.        | Raab, M.         | Stasaitis, C.  | Wallace, H.     |
| Meier, J.      | Rauner, I.       | Stevens, M.    | Webb, H.        |
| Messner, F.    | Reid, P.         | Stoddard, H.   | Westlake, M.    |
| Moore, H.      | Repenter, A.     | Stout, M.      | Wilson, E.      |
| Morrice, H.    | Rice, F.         | Suter, J.      | Withington, D.  |
| Morss, N.      | Roberts, A.      | Sutherland, R. | Witkowski, V.   |
| Mowchan, M.    | Rogerson, O.     | Sweeney, M.    | Zellar, D.      |
| Muirhead, M.   |                  |                |                 |

# FRESHMAN CLASS HISTORY

Seeing there is an unwritten law to the effect "That all those, entering an institute of learning, be known as 'Freshmen', and be under the command and guiding eye of their upperclassmen, during the termination of their first year"; what choice had we, than to either become Frosh or spend the rest of our lives in the total profound darkness of ignorance? So for the winter of 1935-36, Freshmen we became.

We were sure, so sure, that we were quite a wonderful group when we were told that there was to be a reception held in our honor. A wonderful class indeed—The Faculty wanted to meet us . . . Poor disillusioned flock . . . only to be told that this had been a practice for year upon year upon year upon . . . Oh! well, for an awfully long time.

But what fun we had that night. What rushing around to see what all the upperclassmen and women looked like in a group. What a time we had finding the person whose name we had been given. And to what pains we went to find the person that had the name of someone we admired and wanted to dance with. What a night! Oh what a party!

AND THEN—Soon after that memorable event, by those eminent upperclassmen, to whom we sang our true and lasting love every noon for a week, we were told just how to act, how to dress, and even how to speak. The paddling! The orders to be kept! To be decorated until we felt much like a sore finger on the left hand of a concert pianist. Did you ever feel like a sore finger? For days we hunted flies, got fresh vegetables and carried them about, went without cosmetics, dragged umbrellas and babies' bottles about. What gay sport!

Then with these major and undignified tasks finished we were allowed to hold our class election. And just to show what a truly remarkable class we were, we needed two elections before our officers were chosen.

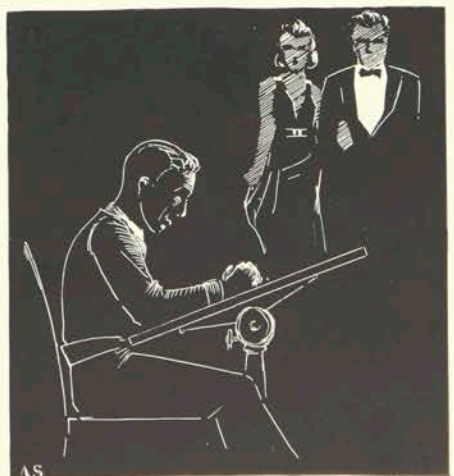
Soon after, the activities of the school came to life, and we flocked to their meetings. Some joined this; some, that. But even though we were separated, we freshmen males held a bond that distinguished us, no matter what our surroundings. Our Green Ties.

Came Thanksgiving. And by this time we Frosh had proven our worth by steadily rising to the top in the activities of our school . . . Rah! Rah! And to us poor bedraggled creatures the very word 'Thanksgiving' brought relief. Our neckties, our caps, our buttons, all were placed, with due ceremony, in their respective wastebaskets. Only to be replaced, in the next few weeks — on the Fraternity Pledges — by ties of such very brilliant hues.

The era had come. We were made to bear the blunt of our Fraternity and Sorority elders' streaks of whimsy. From one who knows, whimsy is practically unlimited when given half a chance.

And now that that's all over and we can once more feel on equal footing with the rest of the world, we look forward to the happy and complete retaliation in the coming years.

# STUDENT LIFE







Barkalow Slocum Scofield  
Gustafson Donovan Morss Keeney

# STUDENT COUNCIL

Ellingson Appleyard Strouse Poradosky



# STUDENT'S ASSOCIATION

Clark Donovan, Chem. III . . . . .	President
Emily Slocum, Art III . . . . .	Vice-President
Frank Scofield, Art II . . . . .	Secretary
Mark Ellingson, Supervisor Photographic Technology . . . . .	Adviser

## RETAIL AND HOME ECONOMICS DEPARTMENTS

Leonore Strouse . . . . .	Retail Distribution III
Ruth Gustafson . . . . .	Retail Distribution III
Betty Appleyard . . . . .	Food Administration II
Ruth Keeney . . . . .	Food Administration II
Nan Morss . . . . .	Retail Distribution I

## APPLIED ARTS DEPARTMENT

Emily Slocum . . . . .	Illustration III
Frank Scofield . . . . .	Illustration II
Peter Porodosky . . . . .	Art I

## INDUSTRIAL DEPARTMENT

Clark Donovan . . . . .	Chemical III
James Barkalow . . . . .	Electrical II
Donald Nichols . . . . .	Mechanical I

The Student Council and Executive Committee is composed of a group representative of the Student Body for the purpose of self-government, promotion of extra-curricular activities, maintenance of high ideals, scholarship, and sportsmanship.

Under the new system of representation, next year's Executive Committee will consist of a faculty adviser, two representatives from each of the Freshman, Junior, and Senior classes of the School of Industrial Arts, one from each class of the School of Retail Distribution, one representative from the Food Administration Department, and one from the School of Applied Arts.

The general Student Council still consists of the one representative from each recognized school organization.

A brief resumé of the workings of the Council for the year 1935-36 is as follows:

The starting of the new Men and Women's Activities Association which includes bowling, basketball, golf, swimming, tennis, tap and ballroom dancing, riding and hiking. (Most of the programs were so arranged that both the men and the women could participate). Wrestling was threatened, but it continued on a trial basis. Noon-day dancing was continued and the probability of the Council buying an automatic phonograph for organization usage was decided. The possibility of the Council building a tennis court was also suggested to the chair and at the present action is being taken. Budgets were very easily taken care of with the exception of the Glee Club whose budget was somewhat cut on a special basis.

These are some of the many things accomplished by the Council with aid of all students on the Executive Committee and the General Student Council and the Faculty Adviser whose advice was appreciated tremendously. Every Institute organization functioned to the best of its ability and co-operation has helped to make it an excellent year.





Benedict Scherer Shingle Terwilliger Robinson

## GROUP LEADERS OF ATHLETICS

Grace Benedict	Basketball
Dorothy Terwilliger	Bowling
Margaret Shingle	Golf
Mary Robinson	Hiking
Georgiana Tuttle	Riding
Jennie Rumont	Swimming
Vivian Scherer	Tap Dancing
Lucille Jones	Tennis

Under the auspices of the Student Council, a new athletic program was started. This year most of the sports are open to both men and women. This system is proving very popular with the students. This is the first year that so many sports have been open to men.

Each department has had an enthusiastic group out for its meetings. In the Fall hiking, riding, and tennis were the most popular sports while during the winter months bowling, basketball and tap dancing led the list.

Bowling was held at Brick Church, swimming at Columbus Civic Center, riding at Heberles' and the armory, while basketball, golf, and tap dancing were held at the Institute.

This has been a most successful year and we hope 1937 will continue with this new plan.



Hungerford Curtis Persons Brownell  
Thacher Robinson Slocum Schleich

## DORMITORY COUNCIL

Caroline M. Schleich . . . . .	Director
Emily Slocum . . . . .	President
Ellen Persons . . . . .	Vice-President
Mary Robinson . . . . .	Secretary and Treasurer
Elizabeth Thacher	Harriet Brownell
Barbara Hungerford	Marianne Curtis

The Dormitory Council is made up of two representatives each from the Senior, Junior, and Freshman residents in the Dormitory. This group endeavors to combine the studies and activities of the girls so that they may live together harmoniously.

This year the regulations were carefully checked and some of them changed to fit present needs. Monthly parties were planned and carried out by efficient committees and the Dorm Formal, held in November, was a very gay event.

As they work together in making a success of these activities, the girls establish many firm and lasting friendships.



Iggleden    Van Vlack    Reed  
Horn    Jordan    Armstrong    Bingham

# THE 1936 RAMIKIN

This year RAMIKIN is celebrating the silver anniversary of its appearance at Mechanics Institute.

Through these years which first began as a record of growing school spirit in the M. I. BOOK, many changes and revisions have been made to keep pace with the ever progressing world. Now the staff has completed this volume, the product of a hard yet pleasant year of work, feeling it has helped to mark an important place in the history of these publications.

To Mr. Horace Koch, the faculty adviser, whose friendly assistance and advice have aided in the production of this book, and to all those in the student body who have lent their support, Ramikin wishes to extend its most sincere thanks.

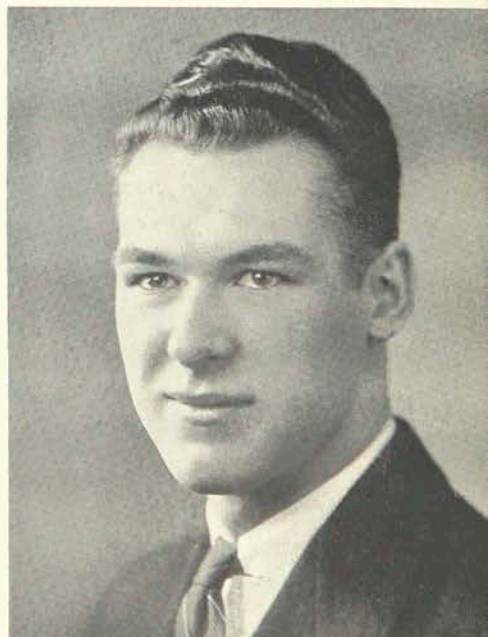


FLORENCE A. ARMSTRONG  
Editor-in-Chief



FLORENCE A. ARMSTRONG	Editor-in-chief
BEATRICE REED	Assistant Editor
CLARIE MARY HORN	Assistant Editor
HARRIET BINGHAM	Assistant Editor
JOHN W. JORDAN	Business Manager
MARGARET IGGLEDEN	Typist
EVELYN REHBEIN	Advertising
AUSTIN EMENS	Advertising
ARTHUR N. SINCLAIR	Art Editor
PETER PORADOSKY	Assistant Art Editor
RUTH GUSTAFSON	
NORMAN VAN VLACK	

JOHN W. JORDAN  
Business Manager





Nichols Van Inwagen Stevens Donovan Armes Heyner Witmeyer Welch  
 Batchelder Polak Kittridge Tilley Giles McCall Harvey Scofield

## PSIMAR

Progress has been the policy of the Psimar for the past year. This has been accomplished through the co-operation of the staff, the faculty, and the students. It is the desire of the staff that in the future, Psimar may have the same success that it has enjoyed during the past year.

### CO-EDITORS-IN-CHIEF

Mary Ellen Giles  
 Nathan Tilley

### BUSINESS MANAGER

Harry McCall

### ART EDITORS

Stanley Witmeyer  
 Betty Baker

### ADVERTISING STAFF

Rudy Polak  
 Dexter Nichols

### SPORTS EDITORS

Alan Dennison  
 Jerry Welch

### FEATURE EDITORS

Houghton Stevens  
 George Van Inwagen

### CIRCULATION and EXCHANGE EDITOR

Karl Heyner

### STUDENT COUNCIL EDITOR

Frank Scofield

### REPORTERS

Leone Armes  
 Eleanor Harvey  
 Priscilla Jenkins  
 Walter Hickok

### FACULTY ADVISER

Miss Ruth E. Kittridge



Sloan Haier Curtis Lawton  
Muirhead Gustafson Cunningham

## RETAIL BULLETIN

Editor-in-chief, Ruth Gustafson

Assistant Editor, Hester Avery

Faculty Adviser, Ruth Cunningham

STAFF MEMBERS: Margaret Iggledon, Lucille Erickson, Marguerite Hart, Pauline Frohlick, Rose Henderson, Marion Johnson, Gladys Urquhart, Leonore Strouse, Gertrude Cline, Barbara Chamberlain, Miles Yerden, Dorothy Terwilliger, Jean Britton, Marianne Curtis, Marion Muirhead, Laura Duncan, Malcolm Sloan, Franklin Lawton, Justine Ulp, Marie Haier, Mildred Mowchan.

The RETAIL BULLETIN, a publication which is put out by members of the retailing classes, has made marked progress during the past year. It stimulates interest among those in this vocational field and its contents deal with problems of retail interest.





Van Inwagen Slocum Harvey Stevens

## DRAMATIC CLUB

### "THE MAN FROM NOWHERE"

#### Cast

Emily Slocum	. . . . .	Mrs. Craddock
Vela Segal	. . . . .	Hilda Swenson
Barbara Hungerford	. . . . .	Anne Royce
Marguerite Hart	. . . . .	Dora Pry
Parker Hazelton	. . . . .	Professor Holmes
Eleanor Harvey	. . . . .	Miss Prim
Rudy Polak	. . . . .	Mr. Graydon
Houghton Stevens	. . . . .	Henry Holt
Nathan Tilley	. . . . .	Mr. Cox
George Van Inwagen	. . . . .	Rodney Baxter

Each year, Gargoyles, Mechanics Institute dramatic club, presents a three-act play as one of its major projects. On the evenings of March 5 and 6 of this year the club presented "The Man from Nowhere" under the direction of Mr. Melvin Jones; the cast being chosen from members of the club.

Aside from the play, activities of the Gargoyles in the past year have included receptions for the Freshmen of each block, a roller skating party in November, presentation of a group of plays at Christmas, a tobogganing party in February and a banquet in March, at which pins were awarded to Juniors and Seniors who had earned them through their work in the club's activities.

Membership in the Gargoyles is open to all students, and consideration is given to the kind of work in which each member is interested, whether it is acting, producing, make-up, costuming, scenic arrangement, publicity or any other phase of dramatics.

SEPTEMBER





Pierson Hendryx Boyce Betts Stoddard Wilson Lester Reed Karle Jones  
 Webster Robinson Mowchan Haier Harvey Garrison Smith Van Vlack Marotta Cline

# GLEE

Appleyard, Betty  
 Bailey, Rebecca  
 Batchelder, June  
 Benedict, Grace  
 Brownell, Harriet  
 Burtis, Marion  
 Chalker, Barbara

Cline, Gertrude  
 Coverdale, Ruth  
 Curtis, Marianne  
 Dennison, Alan  
 Edgett, Mary  
 Edmunds, Doris  
 Hall, Marian

Haire, Marie  
 Hale, Betty  
 Harvey, Eleanor  
 Heath, Harold  
 Horn, Claire Mary  
 Hill, Marjory  
 Howard, Marjory

Hungerford, Barbara  
 Karle, Marion  
 Kantor, Dorothy  
 Keeney, Ruth  
 Leek, Roberta  
 Lester, Francis  
 Lischer, Donald

Houghton Stevens . . . . President  
 Barbara Chalker . . . . Vice-President  
 Jessie Wilson . Secretary and Librarian  
 Lawrence Webster . . . . Treasurer  
 Mary Robinson . . . . Publicity Director

This June ends the fifth successful year of the Mechanics Institute Glee Club which was organized in 1931 when the Boys' and the Girls' Glee Clubs united.

The Glee Club, open to all students of all the courses of the school, has contributed a great deal toward the promotion of friendly relationships and school spirit.



Calkins Hill Scherer Muxworthy Rice Dennison Brownell Benedict Keeney Appleyard Clarke  
Curtis Leave Nelson Edmunds Leek Casad Quinn Barton Stevens

## CLUB

Moratta, Ida	Polak, Rudy	Stoddard, Herbert	Whitlock, Kay
McLaren, James	Reed, Beatrice	Smith, Ruth	Wilson, Edwin
Meier, J. Gordon	Robinson, Mary	Tilley, Nathan	Wilson, Jessie
Mettler, Ione	Scherer, Vivian	Tucker, Kenneth	Wright, Mary
Nelson, Rachel	Segal, Vela	Webster, Lawrence	Van Vlack, Louise
Palmer, Leon	Stevens, Houghton	Welch, Jerold	

Because of this, the club offers an opportunity for the student to develop his voice and improve his taste for music and gives him an opportunity to become acquainted with other students and enjoy a social time.

The first half hour of each bi-monthly meeting was devoted to community singing and offered an informal time to get acquainted. The remainder of the time was devoted to practice on the new selections of the year, under the able direction of Mr. Casad and his accompanist, Mrs. Quinn.

The Spring Dance brought to a climax the organization's activities of a very successful year.



Sheff Calkins Wilson McLam Nichols Heyner Stevers Messner Sorvari Tilley  
 Corsiglia Forgensie Elliot Char Bierbrauer Harvey Rice Sibley McCall Roberts

## CAMERA CLUB

George Ball	. . . . .	President
Edwin Wilson	. . . . .	Vice-President
Albert Schick	. . . . .	Secretary
Vela Segal	. . . . .	Assistant Secretary
Rudolph Polak	. . . . .	Treasurer
Eleanor Harvey	. . . . .	Assistant Treasurer

The Camera Club is made up of all students of the Photographic-Technology department. Its purpose at its bi-weekly meetings is to discuss those subjects relating to photography which are of special interest to the members. Guest speakers lead the discussions at the meetings.

Some of the outstanding speakers which the club had heard this past year have been:

Mr. Brehm who gave an illustrated lecture on Scotland and the Scots.

Mr. Neblette who spoke on professional motion pictures.

Mr. Whittaker who spoke on the Graflex camera and gave a demonstration on enlarging.



Morlante Kennedy Todd  
Harrison Donaldson Allen Weider

# MECHANICAL STUDENTS ASSOCIATION

William Harrison	President
Norman Van Vlack	First Vice-President
John Weider	Second Vice-President
Richard Allen	Treasurer
Daniel Kennedy	Secretary
Jerold Welch	Student Council Representative
Alfred Morlante	Trip Chairman
Robert Todd	Projector Operator

The Mechanical Students Association, organized in 1925 to provide technical activities for students of the Mechanical Department, celebrates its tenth anniversary this year with an increase in membership in addition to an increased interest shown in its activities. The association takes this opportunity to thank everyone, particularly the speakers, who have helped to make this year a success.

R. Eno  
E. Budney  
D. Kennedy  
C. Becker  
C. Edwards  
G. Blount  
C. Sawyer  
W. Bigelis  
K. Tucker  
C. Roth  
E. Fields  
T. Shafnam  
W. Cannon

E. Janus  
V. Witkowski  
N. Van Vlack  
D. Verna  
B. Smalldridge  
R. Brauml  
H. Knight  
D. Zeller  
A. Morlante  
B. Spooner  
W. Leckinger  
R. Patterson  
D. Nichols

R. McConnell  
L. Semple  
M. Waldorf  
B. Marvin  
J. Castellano  
R. Dunwell  
A. Tomasso  
J. Pietrantdnio  
W. Houghton  
J. Troy  
H. Langdon  
G. LaVenture  
H. Harvey

A. Daley  
W. Shay  
J. Jennings  
J. Weider  
W. Harrison  
R. Lockwood  
R. Atkinson  
G. Kendall  
F. Hoffer  
R. Allen  
C. Dibble  
W. Krenz



Gray Mabbett Foseer Taber Curtis Swanson Westcott Connley Braley McLaren  
 Simmons Barkalow Pringle Miller Hazleton Besnecher Owen Kendall Sherman Barrows

## ELECTRICAL STUDENTS ASSOCIATION

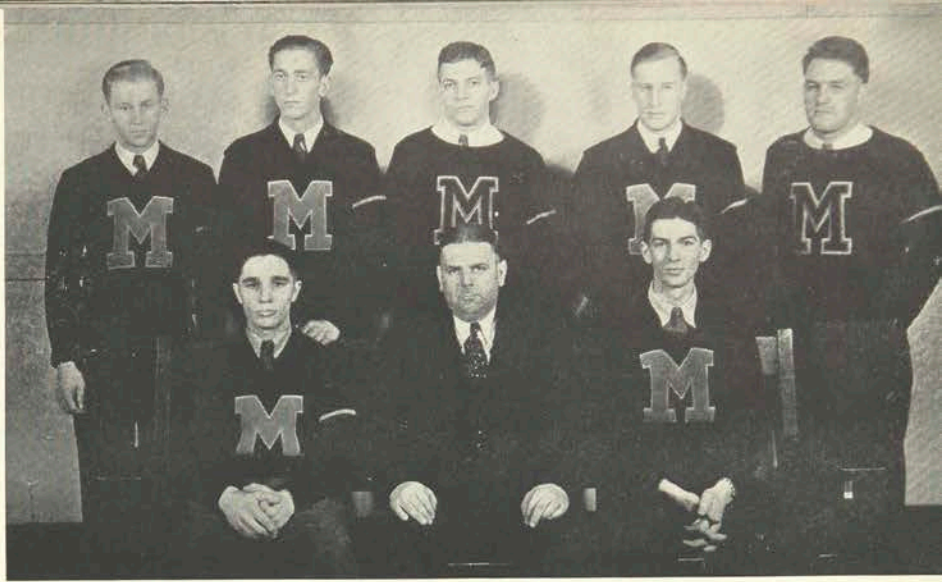
W. P. Hazleton . . . . .	President
E. Pringle . . . . .	Vice-President
Thomas Park . . . . .	Secretary
Joseph Taber . . . . .	Treasurer
Mr. Morecock . . . . .	Faculty

This year through the monthly meetings and field trips the electrical students of Mechanics Institute have been able to gain a wider knowledge of some of the relative work in the electrical field. The two-fold purpose of the organization, to promote technical interests and fellowship among the members, has been accomplished.

The association had been able to secure prominent engineers to speak to the group and present some of the situations and improvements which were occurring in the electrical field. In this manner the student was acquainted with present day conditions with the aim of assisting him to prepare himself for establishing himself in the field in which he was trained.

Early in the year the annual outing was held at Ellison Park with the usual athletic contests which proved this year that the Seniors had lost the reputation they gained at baseball during their Junior year. After the meetings the get-to-gethers proved of value in establishing and promoting fellowship.

The finale of the year was the combined banquet with M. S. A. early in the spring.



Parker Anderson Leary Braley Welch  
Krajowski Hagberg Witmeyer

## M CLUB

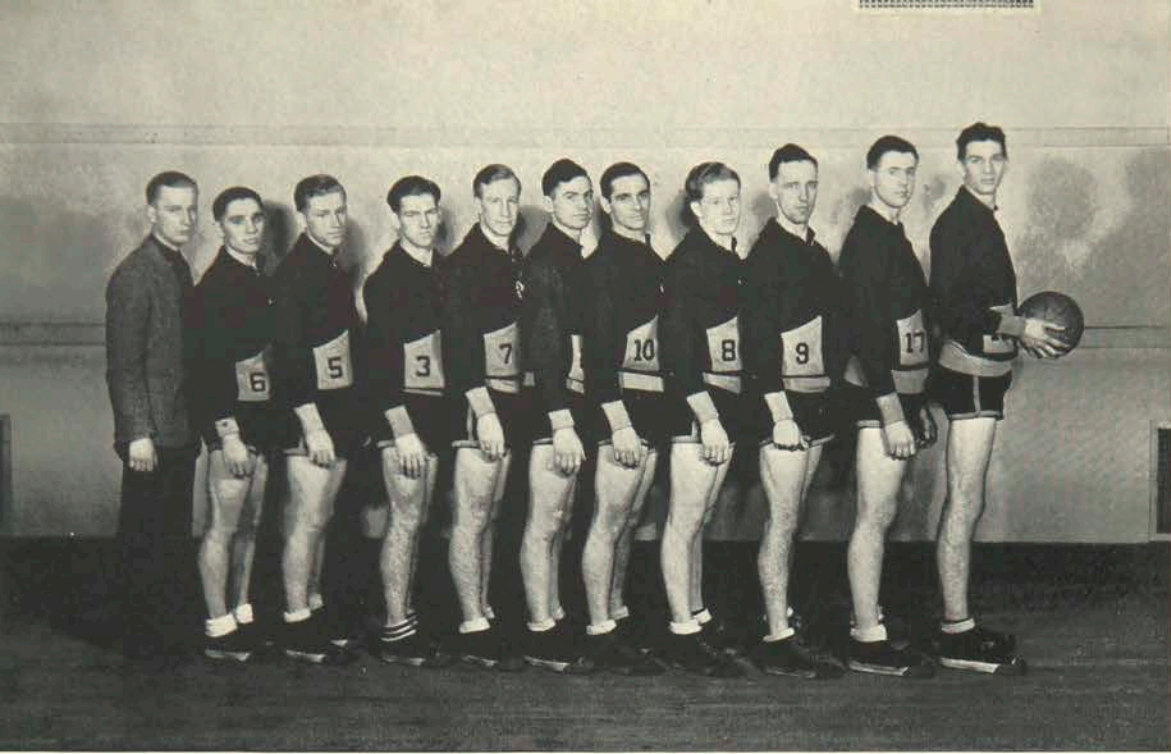
R. Parker	President
J. Welch	Vice-President
R. Braley	Secretary and Treasurer
J. Leary	Representative of Student Council
P. Cohen	Basketball Coach
M. Ellingson	Wrestling Coach
W. Davis	Frosh Wrestling Coach
H. Brodie	Faculty Manager for Basketball
S. Hagberg	Supervisor of Athletics

The 'M Club' was organized seven years ago. It was founded for the sole purpose of building up school spirit and unity of action among the many promoting athletics at Mechanics Institute.

Until two years ago the 'M Club' upheld its primary purpose. But interest in the main sports, basketball and wrestling, has waned. Mechanics Institute has always had a good wrestling and a good basketball team. This year so few students turned out for the squads that it was questionable whether there would be either wrestling or basketball teams. Fortunately these two major sports were able to be maintained.

A large portion of the present members of the 'M Club' will graduate this June, leaving the present student body and the new students to carry on the work of the 'M Club', and to create some new school spirit which seems at the present time to be inadequate for Mechanics Institute.





Arnold Krajowski Parker Dibble Braley Jacobs Hoffer Miller Dennison Walker Witmeyer

## BASKET BALL

Coach Perk Cohen had seven veterans to start as a nucleus for this year's team. With these seven and the aid of new material from the Freshman class he has developed a speedy team featuring fine floor work and fast passing. Although this year's schedule has not a predominate winning column, the team did not lack the enthusiasm, co-operation and sportsmanship that was present in previous Mechanic's teams. Injuries and sickness followed the team throughout the season and to this jinx can be attributed some of the losses which occurred. Considering that most of the opponents met were of championship caliber, this year's season can be looked upon as being very successful and the student body can well be proud of the men who composed the Institute squad.

## SCORES

Mechanics	42	Geneseo Normal	32
Mechanics	25	Oswego Normal	51
Mechanics	47	Geneseo Normal	39
Mechanics	27	Buffalo State Teachers	38
Mechanics	18	Oswego	51
Mechanics	32	Fredonia	34
Mechanics	29	Hartwick	23
Mechanics	31	Ithaca	37
Mechanics	37	Fredonia	35

## THE TEAM

RALPH PARKER—Captain of the squad . . . an inspiration to the team . . . a regular fellow and a cool, steady player. Graduating this year.

STAN WITMEYER—His third year of action with the team . . . Captain in his second year . . . High scorer for three years . . . a life-saver for many games . . . the answer to a coach's prayer. Graduating this year.

✓ CARL DIBBLE—One of the "mites" of the outfit . . . a calm and collected player, possessing a level head . . . the bulwark of team passwork. Graduating this year.

✓ ROLLAND BRALEY—"Rough-house McGinty" . . . a danger under the basket . . . his passing proved the feature of many of our games. Graduating this year.

✓ MIKE KRAJOWSKY—The other "mite of the outfit" . . . he supplies "punch" to the team . . . the best floorman on the team. Mike will be with us another year.

✓ FREDDIE JACOBS—This year's "find" . . . a freshman who has shown splendid improvement . . . The savior of the Fredonia game.

✓ AL DENNISON—A "sub" for three years . . . and always gives his best . . . it's a pleasure to play with him . . . a regular sport. Graduating this year.

✓ FREDDIE HOFFER—Completing his second year with Mechanics . . . an able performer with a willing heart for the team's sake.

"JUMBO" WALKER—Another "find" . . . proved by the many games he's played . . . only a freshman, but plays like a senior.



PERCY COHEN  
Coach



HAROLD BRODIE  
Assistant Coach

## INSTITUTE SCHEDULE

Mechanic's Score		Opponent's Score
0	. . . Syracuse University . . . . .	36
10	. . . Case School of Applied Science . . .	26
5	. . . Kent State College . . . . .	27
—	. . . Alfred University . . . . .	—
—	. . . St. Lawrence University . . . . .	—

## RESERVE SCHEDULE

5	. . . Syracuse Frosh . . . . .	26
23	. . . Alfred Jr. Varsity . . . . .	15

## WRESTLING SQUAD

J. Welch	D. Lischer	A. Roberts	J. LaVenture
G. Blount	A. Morlante	J. Castellano	W. Bigelis
M. Leary	E. Fox	R. Kleifgen	W. Krenz
E. Scherer	P. Sheremeta	C. Geyer	L. Char
D. Herbison	S. Sterling	J. Etu	J. Kopczynski
	R. Polak	A. Emens	

## WRESTLING STAFF

Mark Ellingson, Coach	Austin Emens, Assistant Manager
Warren C. Davis, Freshman Coach	Malcolm Sloan, Freshman Manager
Scott Sterling, Manager	



MARK ELLINGSON  
Coach



WARREN DAVIS  
Assistant Coach



Sterling Herbison Leary Welch Morlante Castellano Shearer Emens

## WRESTLING

An unusually small Mechanics Institute wrestling squad this year fought valiantly to show to advantage against teams more experienced, and selected from larger squads. A great deal of credit is due members of the Mechanics squad whose individual efforts were entirely worthy of emulation.

After being defeated at home by Syracuse University, the Mechanics team made a trip to Ohio, there to be again defeated by Case and Kent, Case upsetting an unbroken record of victories for Mechanics over Case.

The meet with St. Lawrence University scheduled for February 15 was postponed because snow blocked all roads to Canton.

The Reserve team was defeated by Syracuse Frosh, but defeated the Alfred University Junior Varsity.

The season has been unsuccessful in comparison with previous Institute teams. Next year Mechanics will again face a problem in the matter of material. We are confident that if the full strength of Mechanics will cooperate, it can and will produce a wrestling team that will be eminently successful in intercollegiate competition.

Life! Its progress is so complicated in the modern world of today. Yes, it is like unto the wonderful process which transforms iron into steel.

The raw material, iron-ore, is rough, rusty colored chunks of hard soil—just a small insignificant thing—like a little child—just a small particle of purity in a big, cold world, filled with poverty and wealth, evil and good, ignorance and education.

The iron-ore is piled high on box-cars and taken to the big foundries where roaring white heat of the blast furnaces separates the iron-ore from its many impurities. So must a child very early in life be shown the differences between right and wrong through discipline and experiences.

The iron flows in a molten stream into molds to form "pigs". They are very crude yet they take a definite form. Youth awakens, takes definite stand on their own two feet, and looking about them, announce to the world that they know what it is all about and no longer will live by the standards set by others for them, but will set their own standards. They are going to become some one of great importance. Alas, youth dreams!

The crude bars of pig-iron, in order to become refined, must again be heated to a seething boiling mass and air under terrific pressure must be forced through the hot iron to free it from the rest of the impurities. Through education and experiences youth grows up, to cast aside its stubbornness for open-mindedness. The smaller doubts and faults are forgotten for they are too trivial in the new light of the whole. A new perspective of life!

Once more the molten metal is poured into molds but this time it is into different molds of various sizes and shapes, according to what it is destined to become. At this time in life, young people are preparing for some definite work, having up to this time, all had somewhat the same fundamental learning and training.

But the steel must now be tempered so that it will be able to withstand sudden changes in temperature and hard usage. An individual, too, must be tempered so that he will be able to withstand the bitter disappointments, hard knocks and sudden changes which he might have to face. This all comes in the preparation for the definite work which he has chosen.

From the iron which once looked quite useless, now results beautiful glistening steel. Each piece of steel has a definite shape and size according to the duty it is to perform, ranging from a massive steel girder for a skyscraper to an ordinary kitchen knife. Both are indispensable! Thus we all have come from bits of useless iron-ore to pieces of shining steel for use. We all went to grammar school and high school, taking the subjects required of us. Then we chose Mechanics Institute where we prepared for some definite work. We were inspired by a dream. We are ready now, prepared to take our places in the world where best we fit.

But remember—whether the position you fill be a skyscraper girder or a kitchen knife, both are indispensable. Whatever cog you are in the machinery of these modern times, be it massive or minute, stick to it, your position is important to make the world go 'round and around.

BEATRICE REED

DECEMBER





Tuttle Reamer Snyder Meade Schafer Enders  
 Persons Stampe Rehbein Thacher Clarke Armes Benedict

# INTER-SORORITY COUNCIL

## HONORARY MEMBERS

Mrs. Herbert Stampe Miss Hazel Burkey Miss Bertha Thurber Miss Dorothy Roberts

## OFFICERS

Elizabeth Thacher . . . . . President  
 Grace Benedict . . . . . Vice-President  
 Evelyn Rehbein . . . . . Secretary and Treasurer

## MEMBERS

Leone Armes	Mary Alice Gage	Marion Reamer	Leonore Strouse
Adelaide Clarke	Eleanor Meade	Barbara Schafer	Georgiana Tuttle
Alice Enders	Ellen Persons	Elizabeth Snyder	

The aim of the Inter-Sorority Council is to guide the sororities in matters of mutual interests and to establish rules and regulations for the rushing of new members. It is composed of two representatives from each of the four sororities, one representative from the faculty, and four faculty advisers.

This year the Council held two informal parties for the freshmen girls, one party being in the form of a bazaar and the second, an autumn party. The annual Inter-Sorority dance was held in the spring.



Barkalow Leary Van Vlack Pownall Miller Dense Lockwood  
Lischer Hulbert Park Koch Hazelton Bishop

# INTER-FRATERNAL COUNCIL

Harold Heath	President
Thomas Park	Vice-President
Parker Hazelton	Secretary
Donald Hulbert	Treasurer
Horace Koch	Faculty Adviser

The Inter-fraternal Council this year promoted a bond of fellowship between the fraternities, the chief aim of the organization. The year was begun with a Smoker to acquaint the freshmen with the Institute's fraternities. The Inter-fraternal Basketball League had its weekly contest this year and the important social function of the season was the Inter-fraternal Dance early this spring, which proved a success.

Scholastic achievement was stressed in the awarding of the scholastic cup to the Phi Sigma Phi Fraternity.

The scholastic ratings for the year were:

Phi Sigma Phi	82.36%
Pi Kappa Gamma	81.39%
Chi Beta Kappa	80.87%
Chi Delta Phi	79.06%
Chi Epsilon Phi	78.71%





Van Hying Brandt Tuttle Stewart Meinecke Armes Hart  
Gustafson Urquhart Thacher Roberts Williams Chamberlain

# DELTA OMICRON

## HONORARY MEMBERS

Mrs. William Clark    Mrs. Earle Karker    Miss Dorothy Roberts    Mrs. Marie Vick

## SORORES 1936

Leone Armes	Marion Johnson	Ruth Meinecke	Glady's Urquhart
Hester Avery	Dorothy Kingsley	Leonore Strouse	Muriel Williams
Eva Brandt	Ruth Marquart	Elizabeth Thacher	Marguerite Hart
Ruth Gustafson	Kathleen McKay	Georgiana Tuttle	Maylene Stewart
	Mary Ellen Giles		

## SORORES 1937

Barbara Chamberlain    Mary Ellen Means    Carolyn Paquin    Katherine Wend  
Vena Van Hying

The Delta Omicron Sorority was founded in 1921 by eight girls, whose friendship formed the same strong bond of union which exists today. Its aim is to establish firm friendship and to promote high ideals and scholastic standing in both the sorority and in the school.

A novel event of the year was a rush party held January twentieth at The Roosevelt. A Russian theme predominated.

The other events of the year included a Pledge Dinner and a house party.





Clark Benedict Marsh Sterling Shingle Scherer Waterman Jones Terwilliger Crocker  
Brownell Burkey Clarke Persons Nelson Mettler Keeney Appleyard Marotta

# SIGMA KAPPA DELTA

## HONORARY MEMBERS

Mr. Byron Culver      Miss Mary Havens      Miss Viola Wilson      Miss Hazel Burkey

## SORORES 1936

Marion Burtis      Katherine Marsh      Ellen Persons      Margaret Shingle  
Adelaide Clark      Beatrice Nelson      Ida Jean Polson      Gertrude Sterling  
Virginia Warner

## SORORES 1937

Grace Benedict      Marcella Eidam      Lucille Jones      Ione Mettler  
Mary Brannigan      Dorothy Hendryx      Ruth Keeney      Harriet Munson  
Harriet Brownell      Claire Mary Horn      Claire Kuhne      Olga Sheremeta  
Vivian Scherer      Dorothy Terwilliger

The Sigma Kappa Delta sorority was organized in 1926 for the purpose of promoting scholarship and friendliness among the girls of the school.

This year's activities included a rush party on February tenth, which took the form of a sleighride party and the pledge dinner on February twenty-eighth was most successful.

The social season was closed by the annual spring dance and house party.





Lapp Baker Snyder Meade Stampe Shafer Moore Tisher Nelson  
Edmunds Karle Loysen Rehbein Klenke Kline Reid

# PHI UPSILON PHI

## HONORARY MEMBERS

Lulu Scott Backus      Jeane MacCargo Stampe      Minnie Rankin Wyman

## SORORES 1936

Carol Baker      Pauline Froelich      Frances Klenke      Eleanor Meade  
Martha Moore      Evelyn Rehbein

## SORORES 1937

Jean Britton      Doris Edmunds      Marguerite Lapp      Elizabeth Reid  
Betty Baker      Grace Hoffman      Grace Loysen      Barbara Shafer  
Gertrude Cline      Marion Karle      Rachel Nelson      Elizabeth Snyder

Phi Upsilon Phi, the first sorority at Mechanics Institute was founded in November, 1919. It represents a fine development in growth of friendship and unity among girls of all courses. Its aim is to encourage ideals in personal standards and to stimulate progress toward scholarship.

The social program of the past year has been one of activity. It has included one social meeting each month at the home of either an active member or an alumnae. The rush party which was an Old English Fox Hunt took place at the University Club on February 3; and the formal pledge dinner was held at Oak Hill Country Club on February 28. The eventful season closed with the annual June House Party.

The Seniors of Phi Epsilon Phi extend their best wishes for all possible success in the future to their Junior and Senior sisters, with the hope that they will carry on the ideals and traditions set by the sorority.





Reamer    Wilson    Enders    Gage

# ALPHA PSI

## HONORARY MEMBERS AND ADVISERS

Miss Bertha Thurber  
Miss Mary E. Gillard

Mrs. Glenn Otto  
Miss May D. Benedict

## OFFICERS

President, Alice Enders

Vice-President, Leditha Johnson

Secretary-Treasurer, Mary Alice Gage

## MEMBERS 1936

Frances McShea  
Leditha Johnson

Marion Reamer

Jane Scott  
Alice Enders

## MEMBERS 1937

Mary Alice Gage

Jessie Wilson

Alpha Psi, the second sorority to be organized at Mechanics Institute, was founded in 1920 by a group of girls who held as their ideals those things which lead to fairness both in work and play. Their mutual interest led them to the union which has endured to this day.

In accordance with the Inter-sorority Council, the rush party, an informal farmerette affair was held January 13 at the Paddy Hill Players' Log Cabin.

The formal pledge dinner was held February 28. The annual house-party held in June, was a fitting climax to a successful and happy year.

All possible success is the wish extended by those who will leave the sorority this year.



# SO WE THINK

It was June, the month of romance and graduation. Graduation from high school—graduation from adolescence—graduation from spitballs—graduation from monotonous study. So we thought. And the Romance of preparation for our chosen career. We were going to be illustrators, contractors, photographers, buyers, chemists and Lord knows what else. The world needed us, the world was waiting with open arms. So we thought.

So the following September found us filling in application blanks, paying tuition and nervously eyeing the upper-classmen. We felt mighty important. Preparing for our career! The future Dean Cornwells, Pasteurs, Harper Sibleys, Steichens. Say! we WERE important. So we thought.

Before many weeks those things "we thought" began to change. Where was the solemnity of the class-room where you called the instructor by his first name, and where spit-balls were changed to clay in modeling classes? Even the instructor were quite different from those we had known formerly. Instructors who could tell a joke equal to ours, who joined in our fun, who were actually one of us.

Where was that "certain dignity"? It certainly was missing when we marched to Main Street with banners demanding the return of the five cent sandwich, when we put a smoke bomb in an instructor's car, when we put dead rats in the girls' artics. That "dignity" would come with our Junior year. So we thought.

It was September and we were Juniors. "Dignity"? We didn't have time to even think of it—we were too busy making the Frosh wear their clothes inside-out, clean the side-walks with tooth-brushes and drink from baby-bottles.

And now—we're Seniors! And how like our high-school days these three years have been. In years we are much older, time that some of us spent an entire week-end with something like five hours sleep trying to get a problem finished for Monday morning's class.

We are still going to be the Dean Cornwells, Pasteurs, Harper Sibleys and Steichens of tomorrow! We know that the world won't be waiting with outstretched arms but we know also that if we work conscientiously and strive continually for our goal that some day the world will see fit to recognize our efforts.

JOHN W. JORDAN

FEBRUARY





Rhomer Buff Langdon Pownall Allen Pike Cannon Di Shino Atkinson House  
 Caplan Tuites Sinclair Morlante Hickey Kellogg Bishop Pietrantonio

# CHI EPSILON PHI

## FRATRES HONORORES

Dr. J. J. Lawrence  
 Mr. J. Warren Gillon

Mr. Clarence Tuites  
 Mr. Ralph H. Braden

Mr. Mark Ellingson  
 Mr. Richard Bruins

Donald Bishop  
 Chadbourne Hickey

FRATRES 1936  
 Salvatore DiShino

Albert Morlante  
 Arthur Sinclair

Ronald Morgan  
 John Pownall  
 Richard Allen

FRATRES 1937  
 David Caplan  
 Richard Pike  
 Raymond Atkinson

Harlan W. Kellogg, Jr.  
 William Cannon  
 Henry Buff

Harold Langdon<sup>4</sup>  
 Lloyd House<sup>4</sup>

FRATRES 1938  
 J. Gordon Meier<sup>8</sup>  
 William Houghton<sup>5</sup>  
 Michael Gay<sup>3</sup>

Roy Bauer<sup>1</sup>  
 John Troy  
 James Pietrantonio<sup>7</sup>  
 Anthony DeCarlo<sup>2</sup>  
 William Kreny<sup>6</sup>

Chi Epsilon Phi Fraternity, organized in 1921 to promote and support the social and scholastic activities of Mechanics Institute, has completed another year of outstanding fraternal success.

The social program was inaugurated with the annual Rush Party at which was a very large assembly of new men. This was followed by a joint dance with Phi Sigma Phi Fraternity and Delta Omicron Sorority held in Bevier Hall in early November. This was a highlight in the social program.

The informal pledge dinner and initiation was held in North Chili while the formal initiation took place at the Chapel of the First Presbyterian Church with Dr. J. J. Lawrence officiating.





Hineline Brodt Gordon Dennison Swanson Wescott Carmody McLaren  
Mabbett Barkalow Gray Van Vlack Sterling Hazelton Taber Lee Toomey Conlin

# PHI SIGMA PHI

## FRATRES HONORARES

Earle Karker  
Sherman Hagberg

Herman Martin  
Warren E. Davis  
Walter Criley

Alfred A. Johns  
Frederick Kolb

Parker Hazelton  
Joseph Taber  
Howard Lee

FRATRES 1936  
Granville Barnum  
Edwin F. Wood

Allan Dennison  
George A. Wescott  
Edwin Hennik

James Barkalow  
Norman Van Vlack  
Theodore Swanson

FRATRES 1937  
Richard Hineline  
Arthur Mabbett  
Francis Conlin

Jack Toomey  
Scott Sterling  
Charles Evans

Leonard J. Gordon  
Carl Brodt  
Dan Curtis

FRATRES 1938  
James Gray  
George Behnk  
Herbert Wallace

John Carmody  
Alan Bills  
Purnell Densberger

The organization of Phi Sigma Phi fraternity, the first Greek-letter fraternity in Mechanics Institute, was accomplished in the year 1901 by six charter members, who pledged themselves to the loyal support and participation in the social and educational activities of Mechanics Institute, and to the advancement of finer fellowship. For thirty-five years of its existence Phi Sigma Phi has been unceasingly active in the fulfillment of that pledge.

The social activities of the fraternity this year have been most successful, beginning with an open dance in the Bevier building on November 8, held in conjunction with Delta Omicron sorority and Chi Epsilon Phi. The rush party held at the Buckingham Club on November 19 was in its friendliness enjoyed as a true example of "Phi Sig" spirit. Several meetings have been held at the homes of members of the fraternity, and on December 17 a very successful Christmas party with Sigma Kappa Delta sorority was held at Sterling's home.







Johnson    Fields    M. Estes    Waltz    Sheremeta    Emens    Hoffer  
 Blount    Stratton    Hulbert    R. Estes    Walter    Borden    Lockwood

# PI KAPPA GAMMA

## FRATER HONORUS

Burton Stratton

## FRATRES 1936

Raymond Lockwood    Donald Hulbert    Raymond Estes    Emil Walter

## FRATRES 1937

Eugene Field

James Jennings    Peter Sheremeta    George Blount    Frederick Hoffer

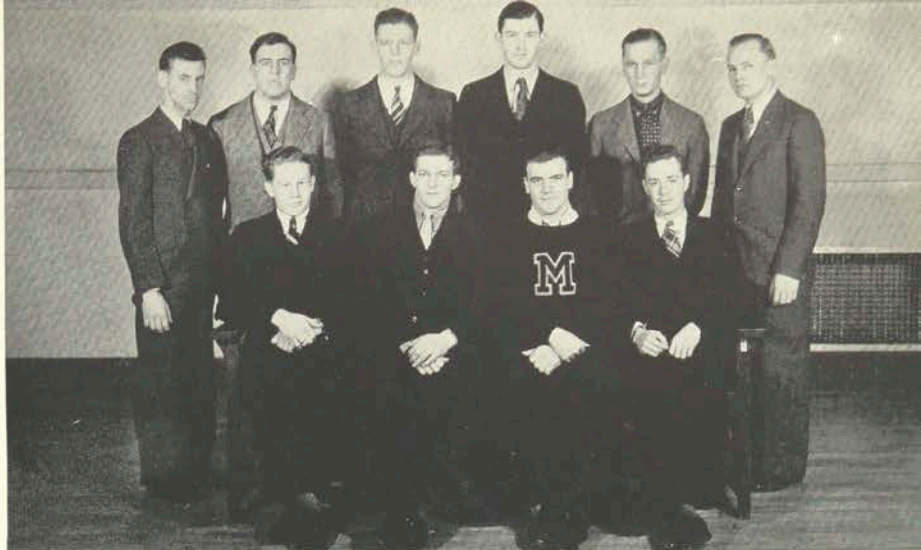
## FRATRES 1938

John Borden    Myron Estes    Roger Dunwell    Hibbard Waltz  
 Robert Johnson    Austin Emens    Malcolm Inglis

Pi Kappa Gamma Fraternity was organized in 1929 to offer to students of Mechanics Institute a medium for fraternal relations, to accomplish this with minimum expense, to foster high scholastic standards and to extend the fraternity to other schools similar to Mechanics Institute. The first three objects have been attained, the fourth is a goal for the future.

The fraternity has retained the inter-fraternal scholastic cup for the last three years.





Etu Hall Maxwell Walsh Arnold Kleifgen  
Miller Leary Fox Hall

# CHI DELTA PHI

J. Arnold  
E. C. Fox  
A. Hall

## FRATRES 1936

J. Hall  
H. E. Heath

A. Kendall  
J. M. Leary  
C. H. Owen

H. Miller

## FRATRES 1937

E. B. Walsh

E. Scherer

J. P. Etu  
R. Kleifgen

## FRATRES 1938

A. Loomis  
J. Kopezynski

C. Maxwell  
A. Soeder

The history of Chi Delta Phi dates back to 1914 when it was originally organized as the Delta Delta Society, which one year later changed to Chi Phi Fraternity. In 1920 the organization was incorporated under the Statute Laws of the State of New York as the Chi Delta Phi Fraternity.

During the past year the Fraternity has enjoyed a very successful season under the able supervision of J. Leary, President; E. Fox, Vice-President; A. Hall, Secretary; and J. Hall, Treasurer.

The Informal Spring Party, the highlight of the year's social calendar, held at Brook Lea Country Club brought to a close the activities of this organization for the 1935-1936 season.





Pringle Polak Nichols Smith Stevens Jacobs Walzer Miller Tilley  
 Sheff Naber Burns Park McCall Lischer Sigel Roberts  
 Walker Atkinson Char Kirkendall Heyner Dense Donovan

# CHI BETA KAPPA

Faculty Adviser, Horace Koch

## FRATRES 1936

Jack Dense	Thomas Park—Pres.	Houghton Stevens	Kenneth Naber
Edmund Pringle	Harry McCall—V.-Pres.	Clark Donavon	Rudy Polak
Donald Walzer	Frederic Sigel—Treas.	Marlowe Kirkendall	George Smith

## FRATRES 1937

Willard Burns—Sec.	Myles Yerden	Frederick Rice	Dexter Nichols
Donald Lischer	James Miller	Spencer Calkins	Lyon Char
Earl Pike	Arthur Roberts	Karl Heymer	Louis Sheff

## FRATRES 1938

Richard Walker	W. Burke Atkinson	Fred Jakobs	Franklin Lawton
----------------	-------------------	-------------	-----------------

The Chi Beta Kappa Fraternity was organized in September 1929, having as its purpose the promotion of scholarship, fraternalism, and good fellowship.

The fraternity is justly proud of the record of its members in both scholastic, and extra curricular activities in all departments of the Institute.

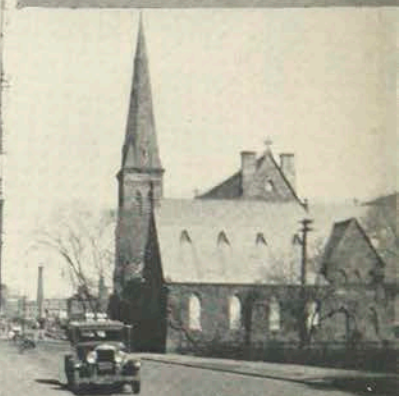
Social activities began with the annual fall rush dinner given in honor of prospective pledges. Later thirteen of this group were given their informal initiation at Hilton Beach.

On March twentieth, the fraternity held its annual dinner dance, at which time a large number of brothers, past and present, joined together to celebrate the culmination of a successful year.



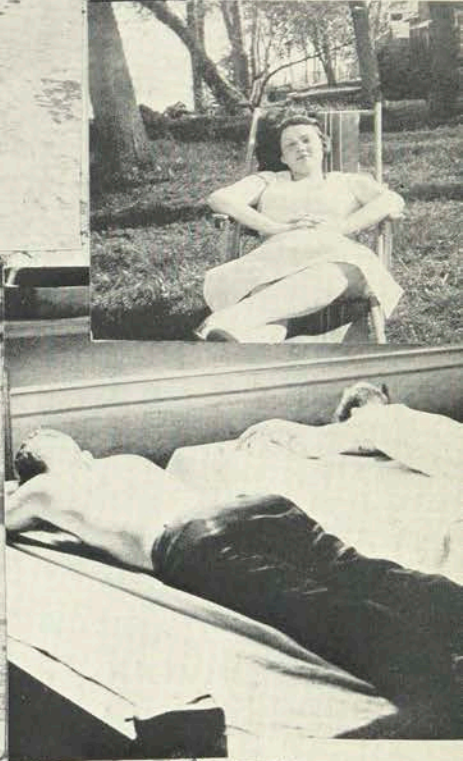
JUNE



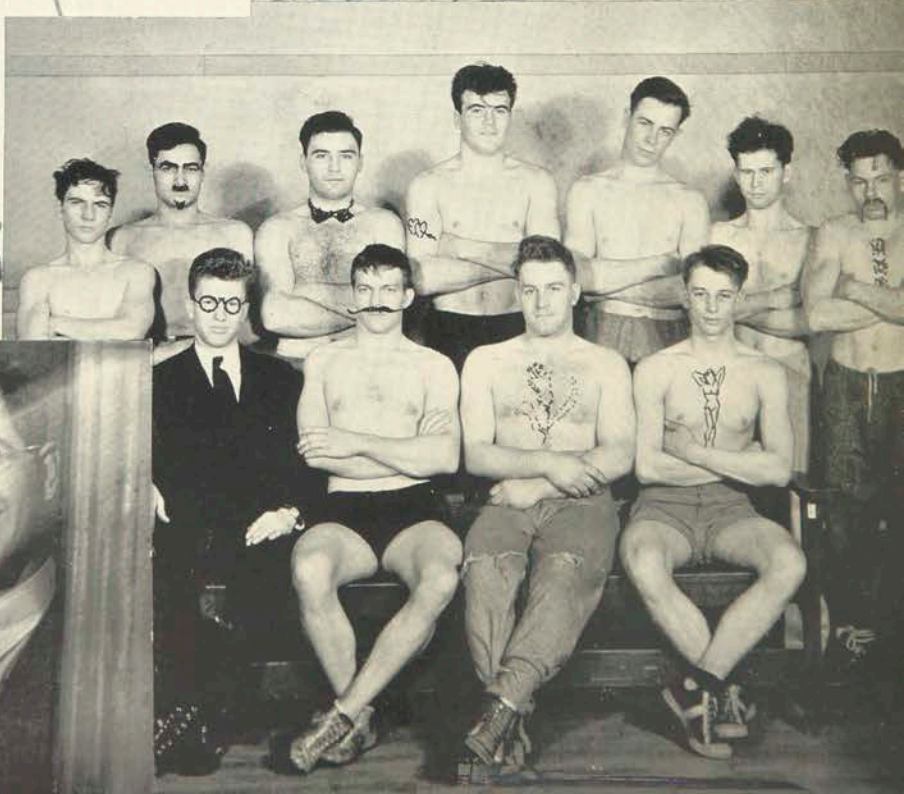
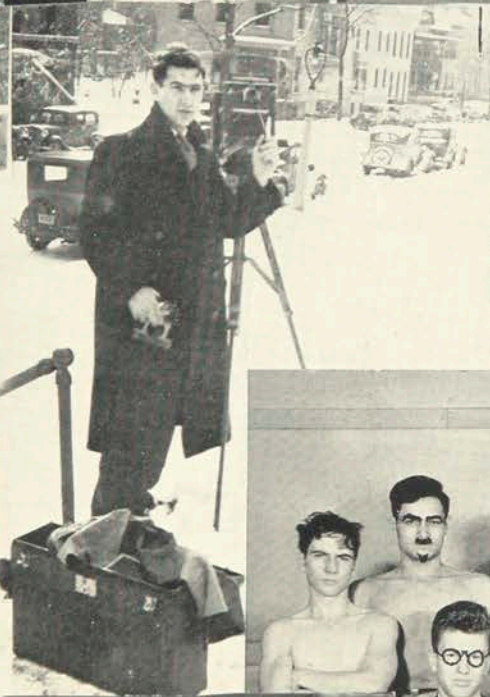












# AUTOGRAPHS

# AUTOGRAPHS

# AUTOGRAPHS



12778

