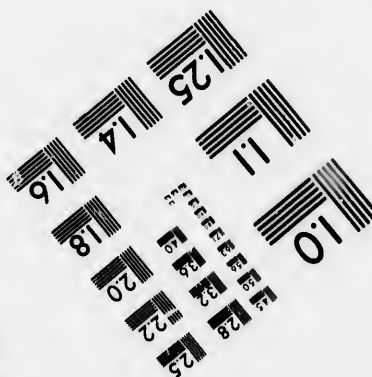
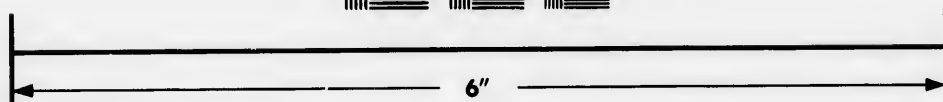
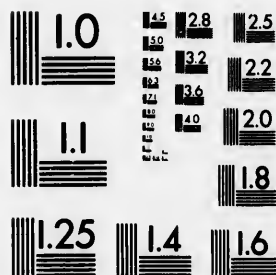


**IMAGE EVALUATION
TEST TARGET (MT-3)**



**Photographic
Sciences
Corporation**

23 WEST MAIN STREET
WEBSTER, N.Y. 14580
(716) 872-4503

**CIHM/ICMH
Microfiche
Series.**

**CIHM/ICMH
Collection de
microfiches.**



Canadian Institute for Historical Microreproductions / Institut canadien de microreproductions historiques

© 1982

Technical and Bibliographic Notes/Notes techniques et bibliographiques

The Institute has attempted to obtain the best original copy available for filming. Features of this copy which may be bibliographically unique, which may alter any of the images in the reproduction, or which may significantly change the usual method of filming, are checked below.

L'Institut a microfilmé le meilleur exemplaire qu'il lui a été possible de se procurer. Les détails de cet exemplaire qui sont peut-être uniques du point de vue bibliographique, qui peuvent modifier une image reproduite, ou qui peuvent exiger une modification dans la méthode normale de filmage sont indiqués ci-dessous.

- Coloured covers/
Couverture de couleur
- Covers damaged/
Couverture endommagée
- Covers restored and/or laminated/
Couverture restaurée et/ou pelliculée
- Cover title missing/
Le titre de couverture manque
- Coloured maps/
Cartes géographiques en couleur
- Coloured ink (i.e. other than blue or black)/
Encre de couleur (i.e. autre que bleue ou noire)
- Coloured plates and/or illustrations/
Planches et/ou illustrations en couleur
- Bound with other material/
Relié avec d'autres documents
- Tight binding may cause shadows or distortion
along interior margin/
La reliure serrée peut causer de l'ombre ou de la
distortion le long de la marge intérieure
- Blank leaves added during restoration may
appear within the text. Whenever possible, these
have been omitted from filming/
Il se peut que certaines pages blanches ajoutées
lors d'une restauration apparaissent dans le texte,
mais, lorsque cela était possible, ces pages n'ont
pas été filmées.
- Additional comments:/
Commentaires supplémentaires:

- Coloured pages/
Pages de couleur
- Pages damaged/
Pages endommagées
- Pages restored and/or laminated/
Pages restaurées et/ou pelliculées
- Pages discoloured, stained or foxed/
Pages décolorées, tachetées ou piquées
- Pages detached/
Pages détachées
- Showthrough/
Transparence
- Quality of print varies/
Qualité inégale de l'impression
- Includes supplementary material/
Comprend du matériel supplémentaire
- Only edition available/
Seule édition disponible
- Pages wholly or partially obscured by errata
slips, tissues, etc., have been refilmed to
ensure the best possible image/
Les pages totalement ou partiellement
obscurcies par un feuillet d'errata, une pelure,
etc., ont été filmées à nouveau de façon à
obtenir la meilleure image possible.

This item is filmed at the reduction ratio checked below/
Ce document est filmé au taux de réduction indiqué ci-dessous.

10X	12X	14X	16X	18X	20X	22X	24X	26X	28X	30X	32X
<input type="checkbox"/>	<input type="checkbox"/>	<input type="checkbox"/>	<input checked="" type="checkbox"/>	<input type="checkbox"/>	<input type="checkbox"/>	<input type="checkbox"/>	<input type="checkbox"/>	<input type="checkbox"/>	<input type="checkbox"/>	<input type="checkbox"/>	<input type="checkbox"/>

The co
to the

The im
possibl
of the
filming

Original
beginn
the las
sion, o
other o
first pa
sion, a
or illus

The las
shall co
TINUED
whiche

Maps,
differen
entirely
beginn
right an
require
method

The copy filmed here has been reproduced thanks to the generosity of:

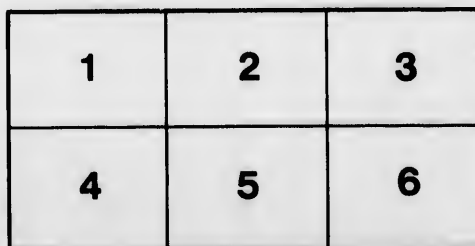
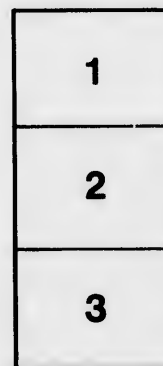
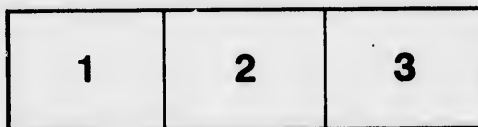
Library of the Public
Archives of Canada

The images appearing here are the best quality possible considering the condition and legibility of the original copy and in keeping with the filming contract specifications.

Original copies in printed paper covers are filmed beginning with the front cover and ending on the last page with a printed or illustrated impression, or the back cover when appropriate. All other original copies are filmed beginning on the first page with a printed or illustrated impression, and ending on the last page with a printed or illustrated impression.

The last recorded frame on each microfiche shall contain the symbol → (meaning "CONTINUED"), or the symbol ▼ (meaning "END"), whichever applies.

Maps, plates, charts, etc., may be filmed at different reduction ratios. Those too large to be entirely included in one exposure are filmed beginning in the upper left hand corner, left to right and top to bottom, as many frames as required. The following diagrams illustrate the method:



L'exemplaire filmé fut reproduit grâce à la générosité de:

La bibliothèque des Archives
publiques du Canada

Les images suivantes ont été reproduites avec le plus grand soin, compte tenu de la condition et de la netteté de l'exemplaire filmé, et en conformité avec les conditions du contrat de filmage.

Les exemplaires originaux dont la couverture en papier est imprimée sont filmés en commençant par le premier plat et en terminant soit par la dernière page qui comporte une empreinte d'impression ou d'illustration, soit par le second plat, selon le cas. Tous les autres exemplaires originaux sont filmés en commençant par la première page qui comporte une empreinte d'impression ou d'illustration et en terminant par la dernière page qui comporte une telle empreinte.

Un des symboles suivants apparaîtra sur la dernière image de chaque microfiche, selon le cas: le symbole → signifie "A SUIVRE", le symbole ▼ signifie "FIN".

Les cartes, planches, tableaux, etc., peuvent être filmés à des taux de réduction différents. Lorsque le document est trop grand pour être reproduit en un seul cliché, il est filmé à partir de l'angle supérieur gauche, de gauche à droite, et de haut en bas, en prenant le nombre d'images nécessaire. Les diagrammes suivants illustrent la méthode.

laire
s détails
ques du
t modifier
iger une
e filmage

4/
uées

aire

by errata
ned to

ment
une pelure,
façon à



F

Bein

CALCU

Conti

Ca

THE
FARMER'S ALMANACK

FOR THE YEAR OF OUR LORD

1827,

Being the third after Bissextile or Leap Year;
CALCULATED FOR THE MERIDIAN OF HALIFAX IN N. SCOTIA,
BUT WILL SERVE FOR ANY PART OF THE PROVINCE.

Containing, besides the large number of Astronomical
Calculations and the Farmer's Calendar for
every month in the year, a great variety
of useful and entertaining matter.



Behold, fond man!
See here thy pictur'd life; pass some few years
Thy flowering Spring, thy Summer's ardent strength—
Thy sober Autumn fading into age,
And pale concluding Winter comes at last,
And shuts the scene."

HALIFAX, N. S.

SOLD BY C. H. BELCHER.

Directions for coming up Halifax Harbour, taken from the printed Directions in the Custom House at Halifax.

SAMBRO Island and Light House is in latitude 44 deg. 30 m. N. and longitude 63 deg. 32 m. W.

From the westward, bring the light to bear N. E. if it bears more easterly, stretch to the southward till it bears N. E. and as much northerly as you please, there being no shoal or ledge to the southward; then keep it open on your larboard bow; give it more than a mile and a half birth, as much more as you please.

NOTE.—The western ledges lie from the Light S. W. distant two miles, the other W. S. W. about one league; the eastern ledges lie in a range nearly, some above water, the outermost one mile and a half from the Light, bearing from it E. N. E.

When the Light bears north distant about 2 miles, run N. E. 4 miles, then north will carry you to Chedabucto Head at a proper distance, clear of all danger.

When abreast of Chedabucto Head, run N. half W. for the south point of George's Island.

When within half a mile of George's Island, you may enter the harbour west of it in 18 fathoms, or east of it in 15.

In passing between Sandwich point and Mauger's beach, run nearest the point to shun a shoal which runs off S. W. from the beach.

There is also a shoal lying one mile south of Sandwich point.

Coming from the eastward, run for the Light and you cannot fail seeing Chedabucto Head as you open Halifax Harbour; the Light being 4 miles distant from the Head to the S. W.

TIDE TABLE for the American Coast.

Amelia Island	add 1 00	Machias	add 3 30
Boston Harbour	add 4 00	Martha's Vineyard	add 0 07
Bell Island Straits	add 1 45	Nantucket	add 0 07
Bermuda In.	sub. 0 30	Narraganset Bay	add 0 07
Cape Fear	add 0 30	New York	add 1 24
Cape Charles	add 0 15	Ocracoke Inlet	add 1 30
Cape May & Henlopn.	add 1 15	Passamaquoddy	add 4 00
Cape Roman	add 0 30	Penobscot Bay	add 3 15
Cape Sable	add 0 20	Philadelphia	add 6 57
Charleston Bar	sub. 0 15	Portland	add 3 15
Chedabucto Bay	0 00	Portsmouth and }	add 3 40
Florida Keys	add 1 20	Newburyport }	
Fundy Bay	add 1 15	Quebec	add 0 33
Hell Gate	add 1 54	Sandy Hook	sub. 0 55
Kennebec entr.	add 3 15	Savannah	add 0 45

The times in the above Table are to be added to or subtracted from the time of high water at Halifax, according to the directions there given.

Signals

One ball
ged ve
One ball
Two ball
Two ball
A penda
A do. un
[The
ing to th
of a ball
when on
hoisted a
An Un
Do. wi
Do. w
Do. w
A red
A blue
A red
A whi
A blue
White
Blue f
A red
A red
An Un
tained, c
A whi
A ball
should in
Made on
which
from.
A red
A red
A red
A wh
A blu
A blu
A blu
A wh
A red
Saint L
A blu
or Bay c

Signals made at Fort George when vessels are coming up the Harbour.

One ball close for a square rigged vessel.	A do. over a do. half hoisted for 7 do.
One ball half hoisted for 2 do.	A do. under 2 do. close for 8 do.
Two balls close for 3 do.	A do. between 2 do. separated for 9 do.
Two balls separated for 4 do.	A flag of any colour for 10 or more do.
A pendant of any color for 5 do.	
A do. under a ball for 6 do.	

[The above are hoisted at the east or west yard arm, according to the quarter the vessel first appears in, with the addition of a ball at the centre of the yard, until the vessel can be seen, when one or more of the following descriptive colours will be hoisted at the mast head.]

An Union for a flag ship, with or without a squadron.

Do. with a red pendant over it for a two decker.

Do. with a blue pendant over it for a frigate.

Do. with a white pendant over it for a small armed vessel.

A red flag pierced white for a packet.

A blue pendant for a merchant ship.

A red pendant for a merchant brig.

A white pendant for a topsail schooner or sloop.

A blue and white flag horizontally divided, neutral fleet.

White and blue pendant, neutral man of war.

Blue flag, neutral merchant ship.

A red, white and blue flag, an enemy's fleet.

A red flag, an enemy's merchantman.

An Union Jack over neutral or enemy's signals, vessel is detained, or prize.

A white flag over any signal, vessel bears a flag of truce.

A ball at the mast head, vessel is on shore or in distress;— should immediate aid be necessary, guns to be fired.

Explanation of Signals

Made on the Ensign Staff at Fort George, to denote the part which vessels entering the Harbour of Halifax have arrived from.

A red flag from Great-Britain.

A red and white do. the Mediterranean.

A red pendant, the Continent of Europe.

A white and red pendant, Madeira, Canary or Western Isles.

A blue flag, West Indies.

A blue pendant, Bermudas, Bahamas, or Turk's Islands.

A blue and white flag, United States.

A white flag, Newfoundland.

A red and white flag horizontally divided, Quebec or Gulf of Saint Lawrence.

A blue and white flag horizontally divided, New Brunswick or Bay of Fundy.

ken from
se at Ha-

deg. 30 m.

if it bears
E. and as
ledge to
ow; give
you please.

W. distant
the eastern
outermost
N.E.

run N.E. 4
d at a pro-

W. for the

may enter
5.

beach, run
W. from the

wich point.
you cannot
harbour; the
W.

add 3 30

add 0 07

add 0 07

add 0 07

add 1 24

add 1 30

add 4 00

add 3 15

add 6 57

add 3 15

add 3 40

add 0 33

sub. 0 55

add 0 45

or subtract-

ing to the di-

A white and blue pendant, vessel has an English mail on board.

A white pendant, coasts of Nova-Scotia and Cape-Breton.

Repeat from Out Posts at Fort George.

For a square rigged vessel, two balls of a size.

A ship, a large ball at the end of the yard with a small ball in the centre.

A brig, a small ball at the end of the yard with a large ball in the centre.

A lozenge in the centre close up, a sloop or schooner.

Do. do. half hoisted, two or more schooners.

Merchants' Private Signals, Port of Halifax.

RED, &c.—J. & M. Tobin, a red flag crossed white.

Croighton & Grassie, do. crossed white diagonally.

Thomas Cunard, do. centre a white star.

Deblois & Mitchell, do. centre a white square.

Frasers & Co. red and white, white next the mast.

John Brown, a red burgee, centre letter E.

Boggs & Hartshorne, a red and white chequered flag, red uppermost.

James Donaldson, a red and white chequered flag.

C. & W. Roche, a red flag, centre a white diamond.

Mitchell & Strachan, do. pierced white.

Fairbanks & M'Nab, a red, white and blue pendant.

D. & E. Starr, a red flag.

Thomas & Michael Tobin, flag crossed diagonally, red next the mast and red outside—white above and below.

BLUE, &c.—Joseph Allison & Co. a blue burgee.

Belcher, Binney & Co. a blue flag crossed white.

James Foreman, jr. do. crossed white diagonally.

S. Cunard & Co. do. centre a white star.

Wm. Pryor, a blue and white flag, blue uppermost.

M. Richardson, a blue and red flag, blue next the mast.

Wm. Story, a blue flag, centre a white square.

John Clark, do. crossed white diagonally.

James H. Tidmarsh, a blue flag.

George P. Lawson, a blue and white chequered flag, white next the mast, uppermost.

Wm. Deblois & Co. a blue flag bordered white, letter D. in the centre, enclosed by two triangles reversed.

G. and A. Mitchell, a blue and white flag, blue uppermost.

WHITE, &c.—J. Starr & Son, a white flag, centre a blue star.

John Tremain, do. crossed blue.

C. Harris, do. centre a red square.

James Lyons, white and red flag, white uppermost.

Wm. Strachan, white red and white do. white next the mast.

Reynolds & Co. a white burgee crossed red.

Fiddes, May & Robertson, white and red flag, red uppermost.

P. Gra

J. & T

Wm. S

Wm. I

McKa

Liverp

white bu

CREE

YELL

centre. a

The fo

arriving

similar o

arms of t

it, descri

Presiden

G. C. I

S. Blo

Hon. Cha

T. M

S. B

Lt. Col. I

H. H. Co

William

John Ho

John Ho

James F

Walter I

John Sta

Henry

Willia

Hon. E

Joseph A

N. T.

Mr. J.

Mr. Jo

Disco

Hours

days at t

P. Grant & Son, a white flag, centre G. S.
 J. & T. Williamson, a white flag.
 Wm. Stairs, a white flag, pierced blue.
 Wm. Lawson, do. with red border, pierced blue.
 McKay & Sinclair, a white burgee, centre a blue square.
 Liverpool Company, no flag at present—the ship carries a white burgee, with "Atlantic" on it.

GREEN, &c.—Law. Doyle, a green burgee, centre a harp.
 YELLOW, &c.—Temple & Lewis Piers, a yellow flag, centre a blue ball.

The foregoing signals are worn at the main. Upon a vessel arriving in sight from the Light-House so wearing a signal, a similar one is hoisted on the Telegraph Staff, or at the yard arms of the signal Staff at Fort George, with a pendant under it, descriptive of the class of vessels she belongs to.

—000X000—

NOVA-SCOTIA BIBLE SOCIETY.

President, His Excellency Lieut.-General Sir James Kempt,
 G. C. B. Lieut. Governor, &c.; Vice Presidents, the Hon. S.
 S. Blowers, and the Hon. Judge Stewart.

COMMITTEE.

Hon. Charles Morris	Samuel Head	} Esquires
T. N. Jeffery	D. S. Clarke	
S. B. Robie	Rev. Wm. Black	
Lt. Col. Beckwith, C. B.	John Burton	
H. H. Cogswell	John Martin	
William Lawson	E. Renny	
John Howe, sen.	Mr. M. G. Black	} Esquires.
John Howe, jun.	J. N. Shannor	
James Foreman	David Hare	
Walter Bromley	J. A. Barry	
John Starr		

HALIFAX BANKING COMPANY.

Henry H. Cogswell, Esquire, President.
 William Pryor, Esquire, Vice President.
 Hon. Enos Collins, James Tobin, Samuel Cunard, John Clark,
 Joseph Allison, Martin G. Black, Esquires, Directors.
 N. T. Hill, Esquire, Cashier.
 Mr. J. C. W. Wilkie, Clerk.
 Mr. Joseph Keefer, Messenger.
 Discount Days—Tuesdays and Thursdays.
 Hours of Business—from 10 to 3 o'clock; Sundays and Holy-
 days at the Public Offices excepted.

SOLAR AND LUNAR ECLIPSES FOR THE YEAR 1827.

1st—April 25, the Sun eclipsed invisible 10 h. 48½ m. even.
 ☾'s lat. 51¼' N.

2d—May 11, the Moon eclipsed visible ; beginning, 2 h. 33 m. morn. ; middle, 4 h. 6 m. ; ecliptic ☿ 3 h. 41 m. ; Moon sets 5 h. 27 m. ; eclipse ends 5 h. 39 m. : digits eclipsed 11° 47½' on the ☾'s southern limb.

3d—October 20, the Sun eclipsed invisible 11 h. 33¼ m. ; ☾'s lat. 48¼' S.

4th—Nov. 3, the Moon will be eclipsed invisible, ☿ at 1 h. in the morning.

The planet Venus will be the morning star till October 7th, and evening star the remainder of the year.

Jupiter will be the morning star till March 30th, then evening star till 18th October, and thence morning star.

Signs of the Zodiac.

♈ Aries—head.
 ♉ Taurus—neck.
 ♊ Gemini—arms.
 ♋ Cancer—breast.
 ♌ Leo—heart.
 ♍ Virgo—belly.

♎ Libra—reins.
 ♏ Scorpio—secrets.
 ♐ Sagittarius—thighs.
 ♑ Capricornus—knees.
 ♒ Aquarius—legs.
 ♓ Pisces—feet.

The Planets and their relations.

☉ The Sun.	♀ Venus.	♃ Jupiter.
☾ The Moon.	♁ The Earth.	♄ Saturn.
☿ Mercury.	♂ Mars.	♁ Georgian.

♊ A Planet's ascending node.

♋ The descending node.

♌ Conjunction, or Planets situated in the same longitude.

☐ Quadrature, or Planets situated in longitudes differing 3 signs from each other.

♌ Opposition, or Planets situated in opposite longitudes, or differing 6 signs from each other.

N. north. S. south. Inf. inferior. Sup. superior. Im. immersion. Em. emersion.

Chronological Cycles for 1827.

Nominal Letter,	G. Solar Cycle,	16
Lunar Cycle, or golden numb. 4	Roman Indiction,	15
Epact,	3 Julian Period,	6540

Septuag
 Quinq. o
 Ash Wed
 Mid. Len
 Palm Su
 Easter D

March 7
 June 6, 8

1st Janu
 29th "
 17th Ma
 25th "
 13th Ap
 16th "
 17th "
 23d "
 29th Ma

LEFT
 month.
 the sun
 days in
 slower
 sun fast
 Eighth,
 setting
 place in

RIGH
 cond, A
 lendar.

YEAR 1827.

Moveable Feasts.

Septuagesima Sun. Feb. 11.	Low Sun. April 22.
Quinq. or Shrove Sun. Feb. 25.	Rogation Sun. May 20.
Ash Wed. or 1st day Lent ,, 28.	Ascen. Day or Holy Th. May 24.
Mid. Lent Sun. March 25.	Whit Sunday, June 3.
Palm Sun. April 8.	Trinity Sunday, June 10.
Easter Day, April 15.	Advent Sunday, Dec. 2.

Ember Days.

March 7, 9, and 10.	September 19, 21, and 22.
June 6, 8, and 9.	December 19, 21, and 22.

Holidays at the Public Offices.

1st January, New Year's Day.	24th June, St. John.
29th ,, K. Geo. IV's access.	4th June, Whit Monday.
17th March, St. Patrick.	5th ,, Whit Tuesday.
25th ,, Lady Day.	19th July, K. Geo. IV. crowned.
13th April, Good Friday.	29th Sept. Michaelmas Day.
16th ,, Easter Monday.	5th Nov. Gunpowder Plot.
17th ,, Easter Tuesday.	30th ,, St. Andrew.
23d ,, St. George, K. B. Day.	25th Dec. Christmas day.
29th May, Restoration K. Chas. 2.	

Explanation of the Calendar Pages.

LEFT HAND PAGE.—First column shows the days of the month. Second, the days of the week. Third, the rising of the sun. Fourth, the setting of the sun. Fifth, the length of days in hours and minutes. Sixth, shows how much faster or slower the sun is than the real time in minutes—S sun slow, F sun fast. Seventh, sun's declination in degrees and minutes. Eighth, the moon's age in days. Ninth, the moon's rising or setting. Tenth, the moon's southing. Eleventh, the moon's place in the signs. Twelfth, high water at Halifax.

RIGHT HAND PAGE.—First column, days of the month. Second, Aspects, Holidays and Weather. Third, Farmer's Calendar.

16
15
6540

AN IMPORTANT DISCOVERY.—A few weeks since being be-
lated in the afternoon about doing an errand a few miles dis-
tance, I resolved to attend to it early in the morning. I woke,
and hasted from my bed, and immediately heard the clock
strike four; sure, thought I, here is some mistake. It was
broad day, and but four. I could not account for it; but I sad-
dled my horse and trotted off. It was actually as light as the
evening is after sunset. The air was cool, and refreshing.—
My coltish old dobbin seemed to enter into the life of the jaunt,

First Quarter 5th day 8 h. 28m. Full Moon 13th day 5 h. 48 m.

D	D	☉	☉	Days	S	Sun's	☾	☾ R.	Moon	☾	High
M	W	rises.	sets.	len'th	sl.	dec.S	A	& S.	south.	pl	Water
1	M	7 38	4 22	8 44	49	49	13	3 56	3 25	28	10 31
2	Tu	7 38	4 22	8 44	4	10 54	14	4 53	4 12	28	11 18
3	W	7 38	4 22	8 44	4	11 58	15	rises. 4	5 58	25	eve. 4
4	Th	7 37	4 23	8 46	5	morn. 16	6	25 5	4 42	20	0 48
5	Fr	7 36	4 24	8 46	6	0 58	17	7 18	6 26	20	1 32
6	Sa	7 35	4 25	8 50	6	1 56	18	8 12	7 10	8	2 16
7	G	7 35	4 25	8 50	7	2 54	19	9 8	7 55	14	3 1
8	M	7 34	4 26	8 52	7	3 50	20	10 4	8 42	25	3 48
9	Tu	7 33	4 27	8 54	7	4 54	21	11 2	9 29	29	4 35
10	W	7 33	4 27	8 54	8	5 35	22	morn. 10	10 18	19	5 24
11	Th	7 32	4 28	8 56	8	6 2	23	0 31	11 6	15	6 12
12	Fr	7 31	4 29	8 58	9	7 4	24	1 2	11 54	13	7 0
13	Sa	7 31	4 29	8 58	9	rises. 25	2	6	morn. 25	7	47
14	G	7 30	4 30	9 0	9	7 1	26	3 11	0 41	8	0
15	M	7 29	4 31	9 2	10	8 4	27	4 19	1 28	21	8 34
16	Tu	7 28	4 32	9 4	10	9 8	28	5 28	2 15	m	9 21
17	W	7 28	4 32	9 4	10	10 14	29	6 35	3 1	17	10 7
18	Th	7 27	4 33	9 6	11	11 20	30	sets. 3	4 48	10	54
19	Fr	7 26	4 34	9 8	11	morn. 1	6	43 4	3 37	14	11 43
20	Sa	7 25	4 35	9 10	11	0 30	27	56 5	2 26	27	morn.
21	G	7 24	4 36	9 12	12	1 36	3	9 9	6 20	m	1 26
22	M	7 23	4 37	9 14	12	2 45	4	10 19	7 17	25	2 23
23	Tu	7 22	4 38	9 16	12	3 52	5	11 28	8 16	1	3 22
24	W	7 21	4 39	9 18	12	4 54	6	morn. 9	9 16	24	4 22
25	Th	7 20	4 40	9 20	13	5 49	7	0 34	10 16	13	5 22
26	Fr	7 19	4 41	9 22	13	6 38	8	1 38	11 1	24	6 21
27	Sa	7 18	4 42	9 24	13	sets. 9	2	39	eve. 10	7	16
28	G	7 17	4 43	9 26	13	7 19	10	3 38	1 3	22	8 9
29	M	7 15	4 45	9 30	14	8 26	11	4 35	1 52	28	8 58
30	Tu	7 14	4 46	9 32	14	9 31	12	5 29	2 40	20	9 46
31	W	7 12	4 48	9 36	14	10 34	13	6 20	3 26	10	32

and I arrive
mour. I re
found it lig
couple of
great deal.
looked bett
very consc
whole hear
tious who s

Last Qu

D	Asp
1	Circum
2	
3	♃ S 5h
4	Gr. elon
5	Low T
6	Epiphan
G	1st Sun
8	Lucian
9	♃ S 10
10	♀ h. ri
11	
12	
13	♀ stati
G	2d Sun
15	High T
16	♂ sets
17	Dr. Fra
18	♀ rise
19	♃ S 10
20	☉ ente
G	3d Sun
22	Vincer
23	♂ sets
24	☾ in p
25	Conver
26	♃ S 4
27	Duke
G	4th Su
29	K. Geo
30	K. Cha
32	K. Geo

ce being be-
w miles dis-
g. I woke,
rd the clock
ke. It was
; but I sad-
light as the
efreshing.—
of the jaunt,

and I arrived home to my breakfast full of health and good humour. I rose every morning at four, went into the field, and found it light enough to work. The thought struck me that a couple of hours labour before breakfast would amount to a great deal. I have followed it up ever since; my fields never looked better; never had so fine health and spirits; and my very conscience seems improved. My wife enters with her whole heart into the family revolution. My boys are ambitious who shall give the first call. My three girls used to be

ay 5 h. 48 m.

Last Quar. 20th d. 12h. 34m. New Moon 27th d. 4h. 32m.

Day	☾	High	Water
25	28	10	31
26	30	11	18
27	25	eve.	4
28	29	0	48
29	20	1	32
30	8	2	16
31	14	3	1
1	25	3	48
2	25	4	35
3	19	5	24
4	6	6	12
5	13	7	0
6	25	7	47
7	8	8	0
8	21	8	34
9	5	9	21
10	17	10	7
11	8	10	54
12	14	11	43
13	27	morn.	
14	1	1	26
15	25	2	23
16	1	3	22
17	24	4	22
18	15	5	22
19	24	6	21
20	7	7	16
21	22	8	9
22	30	8	58
23	20	9	46
24	9	10	32

D M Aspects, Holidays, Weather, &c.

FARMER'S CALENDAR.

1 Circumcision.
2
3 ♃ S 5h 51m morn. *A storm is near*
4 Gr. elon. ☿. ☿ ☺ ♃.
5 Low Tides. *at hand*
6 Epiphany.
7 1st Sunday after Epiph.
8 Lucian. ☾ in apogee.
9 ♃ S 10h 43m eve. *pleasant*
10 ♀ h. rises 5h 20m morn. *but cold*
11
12 *more snow*
13 ♀ stationary.
14 2d Sunday af. Eph. ☽ ☺ ☿.
15 High Tides. *more*
16 ♂ sets 8h. 47m. eve. *falling*
17 Dr. Franklin b. 1706. *weather*
18 ♀ rises 4h 46m morn.
19 ♃ S 10h even. *look out*
20 ☺ enters ☿ *for a storm*
21 3d Sunday af. Eph.
22 Vincent.
23 ♂ sets 8h 46m eve.
24 ☾ in perigee. *pleasanter*
25 Conversion of St. Paul.
26 ♃ S 4h 25m morn.
27 Duke of Sussex b. 1773.
28 4th Sun. af. Eph. ♃ stat.
29 K. Geo. IV. acces. 1820. *cold*
30 K. Char. I. Mar. ♃ S 9h 8m
31 K. Geo. IV. procl. [eve.

After wishing our agricultural friends "A happy New-Year," we wish to offer them a few hints, which we trust they will receive with kindness, and shall then try to give them such scraps of information on the subject of agriculture as our limits and circumstances will allow.
Agriculture is considered as the glory of the country. Commerce we may pursue; but still, commerce is only the younger sister of agriculture, and must be supported and protected by her. Commerce too, depends upon the fashions of the times, and upon the disposition of other nations.—Not so with agriculture, we may be sovereign in this, and shall ever find it the most sure source of strength, of wealth, and civil liberty. The very earth too, seems to smile in gratitude upon the attention paid to agriculture; for she not only repays the husbandman sixty-fold, but gives him health, vigour and strength.

rather pale and languid ; but since their early rising, their eyes are as the dew drops of the morning, and their cheeks brighter than the blossoms of the field. Our breakfast table is adorned with clean dishes, and sweet milk and butter. The cows themselves, which go to the pasture an hour and an half earlier than they used to go, seem to enter into the family improvement, and my wife even insists that they actually give more milk than formerly. One thing more I did not mean to mention, as it is a family affair ; but as it is the best of all, I will hint it for the encouragement of other girls. My eldest daughter Sarah, was eighteen six years ago, was thin featured, and never seemed to get along as to *prospects*, in so promising a

First Quar. 3d d. 4h. 52m. eve. Full Moon 11th d. 6h. 9m. eve.

D	D	☉	☉	Days	S.	Sun's	☾	☾	R.	Moon's	☾	High	
M	W	rises.	sets.	len th	sl.	dec. S	A	& S.		south.	pl.	water.	
1	Th	7 94	51 9	42 14	17 13	5 11	34 4	10 15	11 16				
2	Fr	7 84	52 9	44 14	16 56	6	morn.	4 57	18	eve.	3		
3	Sa	7 74	54 9	46 14	16 39	7 0	34 5	42 8	0		48		
4	G	7 54	55 9	50 14	16 21	8 1	32 6	29 22	1		35		
5	M	7 44	56 9	52 14	16 3	9 2	28 7	16 11	2		22		
6	Tu	7 34	57 9	54 14	15 45	10 3	20 8	4	3		10		
7	W	7 24	58 9	56 14	15 26	11 4	8 8	53 27	3		59		
8	Th	7 14	59 9	58 15	15 7	12 4	53 9	42 25	4		48		
9	Fr	6 59	5	1 10	2 15	14 48	13 5	34 10	30	22	5	36	
10	Sa	6 58	5	2 10	4 15	14 29	14 6	10 11	18	Q	6	24	
11	G	6 56	5	4 10	8 15	14 10	15	rises.	morn.	17	7	11	
12	M	6 55	5	5 10	10 15	13 50	16 3	52 0	5	17	7	56	
13	Tu	6 53	5	7 10	14 15	13 30	17 8	0 0	50	13	8	2	
14	W	6 52	5	8 10	16 15	13 10	18 9	7 1	42	27	8	48	
15	Th	6 51	5	9 10	18 14	12 49	19 10	15 2	31	2	9	37	
16	Fr	6 49	5	11 10	22 14	12 29	20 11	24 3	21	24	10	27	
17	Sa	6 48	5	12 10	24 14	12 8	21	morn.	4 14	11	11	26	
18	G	6 47	5	13 10	26 14	11 47	22 0	33 5	9	22	morn.		
19	M	6 45	5	15 10	30 14	11 26	23 1	40 6	6	1	1	12	
20	Tu	6 44	5	16 10	32 14	11 4	24 2	43 7	5	20	2	11	
21	W	6 42	5	18 10	36 14	10 43	25 3	39 8	3	13	3	9	
22	Th	6 51	5	19 10	38 14	10 21	26 4	28 9	1	19	4	7	
23	Fr	6 39	5	21 10	42 14	9 59	27 5	12 9	57	3	5	3	
24	Sa	6 38	5	22 10	44 14	9 37	28 5	56 10	50	17	5	56	
25	G	6 36	5	24 10	48 13	9 15	28	sets.	11 42	3	6	48	
26	M	6 34	5	26 10	52 13	8 53	17	13	eve.	30	14	7	36
27	Tu	6 33	5	27 10	54 13	8 30	28	17	1	17	28	8	23
28	W	6 31	5	29 10	58 13	8 8	3 9	21 2	4	19	9	10	

way as s
pear hal
and betv
most ste
been con
which I
Since
mers, th
ed, calli
Whose
discover
families

Last Qu

D	M
1	h S
2	Purif
3	
G	5th S
5	Agat
6	
7	h S
8	1/2 S
9	♀ ris
10	♂ se
G	Septu
12	High
13	
14	Vale
15	
16	1/2 S
17	
G	Sex.
19	☉ en
20	☾ in
21	Sup.
22	Was
23	♀ ris
24	St. M
G	Quin
26	h S
27	Shro
28	Ash

ng, their eyes
cheeks bright-
ast table is a-
utter. The
r and an half
he family im-
actually give
l not mean to
st of all, I will
eldest daugh-
featured, and
promising a

way as some others, But these mornings have made her ap-
pear half a dozen years younger, and six times as handsome :
and between ourselves, my neighbour Dacon's son, one of the
most steady, industrious sons which a father could wish, has
been coming and going, and has to-day asked me a question,
which I think is to end in some thing.

Since my practice of early rising, I have observed some far-
mers, the sun an hour or two high, in the morning, half dress-
ed, calling out, " The cattle in the grain, Shooboy ! Shooboy !
Whose are they, Plague on 'em ! drive 'em to pound." The
discovery which I have made is, that these are generally those
families that sleep and snore away the morning. A FARMER.

6h. 9m. eve.

on's C High
th: pl. water.

10	15	11	16
57	18	eve.	3
42	8	0	48
29	22	1	35
16	11	2	22
4	3	3	10.
53	27	3	59
42	5	4	48
30	22	5	36
18	9	6	24
rn.	17	7	11
5	m	7	56
50	13	8	2
42	27	8	48
31	1	9	37
21	24	10	27
14	m	11	26
9	22	morn.	
6	1	1	12
5	20	2	11
3	13	3	9
1	19	4	7
57	5	5	3
50	17	5	56
42	3	6	48
30	14	7	36
17	28	8	23
4	9	9	10

Last Quar. 18th d. 8h. 56m. eve. | New Moon 25th d. 6h. eve.

D M	Aspects, Holidays, Weather, &c.	FARMER'S CALENDAR.
1	h S 3h 58m morn. clouds	1.—Try to raise the stund-
2	Purif. of B. V. Mary up for	ard of Agriculture.—To do
3	a rain storm	this, be an example of a good
G	5th Sun. af. Eph.	farmer yourself; be indus-
5	Agatha. C in apogee. grows	trious, be frugal, be tempe-
6	more	rate, be regular in your busi-
7	h S 8h 35m eve. moderate	ness, be punctual in your en-
8	1/2 S 3h 30m morn.	gagements, be correct in
9	♀ rises 4h 7m morn. very cool	keeping your accounts; keep
10	♂ sets 8h 42m eve. nights	your farm, your fences, your
G	Septuagesima Sunday.	houses, barns, &c. in order;
12	High Tides. changeable	dress according to your work.
13	weather for	Try to encourage your neigh-
14	Valentine Day. some days	bours to be good farmers;—
15		show them your good man-
16	1/2 S 2h 53m morn. becomes	agement; perhaps unite with
17	moderate	them in an Agricultural So-
G	Sex. Sun. Luther died 1546.	ciety; be not too much at-
19	☉ enters ♋	tached to old notions and me-
20	☾ in perigee. high winds	thods in farming, nor too ea-
21	Sup. ♁ ☉ ♃.	ger for new inventions and
22	Washington born 1732. quite	discoveries. Cattle will read-
23	♀ rises 4h 33m morn. fine	dily eat young sprouts, twigs
24	St. Matthias. D. of Cam. b. 1774.	of trees and bushes, at all
G	Quinquagesima Sunday.	times of the year. Salt Hay
26	h S 7h 19m eve. for the	is found to give them an ex-
27	Shrove Tuesday. season	traordinary appetite for this
28	Ash Wednesday.	kind of food.

Love—is made up of contrarieties—a fair Woman, they say, best loves a dark man. A tall man generally selects a little Woman for a wife; and the portly dame admires to tuck a pigmy spouse beneath her sheltering arm; the mild and timid girl turns with delight to the bold and sparkling lover; the ancient crone sighs for the blooming youth; and the wisest seek in the society of the weakest, the pleasing relaxation from the austerer duties of the bar, the senate, or the state!

First Quar. 5th d. 2h. 13m. eve. Full Moon 13th d. 7h. 55m. morn.

D	D	☉	☉	Days'	S	Sun's	☾	☾ R.	Moon	☾	High
M	W	rises.	sets.	len'th	sl.	dec. S	A	& S.	south.	pl.	Water
1	Th	6 30	5 30	11 0	13	7 45	4 10	22	2 50	23	9 56
2	Fr	6 28	5 32	11 4	12	7 22	5 11	21	3 37	8 10	43
3	Sa	6 27	5 33	11 6	12	6 59	6	morn	4 23	18 11	29
4	G	6 25	5 35	11 10	12	6 36	7 0	30	5 11	29	eve. 17
5	M	6 24	5 36	11 12	12	6 13	8 1	11	5 59	Π	1 5
6	Tu	6 23	5 37	11 14	12	5 50	9 2	16	4 48	23	1 54
7	W	6 21	5 39	11 18	11	5 27	10 2	49	7 36	25	2 42
8	Th	6 19	5 41	11 22	11	5 3	11 3	31	8 24	17	3 30
9	Fr	6 18	5 42	11 24	11	4 40	12 4	9	9 12	29	4 18
10	Sa	6 16	5 44	11 28	11	4 17	13 4	43	10 1	Ω	5 7
11	G	6 15	5 45	11 30	10	3 53	14 5	16	10 49	25	5 55
12	M	6 13	5 47	11 34	10	3 30	15 5	48	11 38	μ	6 44
13	Tu	6 12	5 48	11 36	10	3 6	16	rises.	morn.	22	7 34
14	W	6 10	5 50	11 40	9	2 43	17 8	6	0 28	∩	8 0
15	Th	6 9	5 51	11 42	9	2 19	18 9	18	1 26	20	8 26
16	Fr	6 7	5 53	11 46	9	1 55	19 10	29	2 14	η	9 20
17	Sa	6 5	5 55	11 50	9	1 31	20 11	39	3 9	19	10 15
18	G	6 4	5 56	11 52	8	1 8	21	morn.	4 8	↑	11 14
19	M	6 2	5 58	11 56	8	0 44	22 0	42	5 6	17	morn.
20	Tu	6 1	5 59	11 58	8	0 20	23 1	40	6 4	∩	1 10
21	W	5 59	6 1	12 2	7	0 22	24 2	33	7 2	15	2 8
22	Th	5 58	6 2	12 4	7	0 26	25 3	17	7 57	29	3 3
23	Fr	5 56	6 4	12 8	7	0 50	26 3	56	8 50	∞	3 56
24	Sa	5 54	6 6	12 12	6	1 13	27 4	30	9 51	26	4 47
25	G	5 53	6 7	12 14	6	1 37	28 5	2 10	10 29	∞	5 35
26	M	5 51	6 9	12 18	6	2 1	29 5	33	11 17	23	6 23
27	Tu	5 50	6 10	12 20	6	2 24	30	sets.	eve.	4 9	7 10
28	W	5 48	6 12	12 24	5	2 48	1 8	15	0 50	19	7 56
29	Th	5 46	6 14	12 28	5	3 11	2 9	15	1 37	8	8 43
30	Fr	5 45	6 16	12 30	5	3 34	3 10	14	2 24	13	9 30
31	Sa	5 43	6 17	12 34	4	3 58	4 11	10	3 11	25	10 17

Nothing been in a although to a toug puzzle th Again, i to death, gour of l

Last Quar
D A
M
1 St. D
2 ♃ S
3
4 1st Su
5 ☾ in a
6 Very
7 ♃ S
8 ♃ S
9
10 ♀ rise
11 2d Su
12 Grego
13 Plane
14
15 ♃ S
16
17 St. Pa
18 3d Su
19
20 Newt
21 Bened
22
23 ♀ ris
24
25 4th Su
26
27 ♃ S
28 ☾ ☾
29
30 ♀ ☾
31

oman, they say,
y selects a little
admires to tuck a
e mild and timid
ing lover; the
and the wisest
sing relaxation
, or the state!"

Nothing is more common than to hear people who have been in a heavy shower of rain remark—"I was *wet through*;" although such a thing is morally impossible! Also, in allusion to a tough cough, "what a *bad* cold I've got;" when it would puzzle them or any body else to know what a *good* one is!! Again, in describing serious alarm, "Oh! I was frightened to *death*," whilst the party thus exclaiming is in the full vigour of his corporeal and mental faculties!!!

d. 7h. 55m. mrrn.

Last Quar. 20th d. 4h. 8m. mrrn. New Moon 27th d. 7h. 48m. mrrn.

Moon	☾	High
outh.	pl.	Water
50	23	9 56
37	8	10 43
23	18	11 29
11	29	eve. 17
59	II	1 5
48	23	1 54
36	25	2 42
24	17	3 30
12	29	4 18
1	☉	5 7
49	25	5 55
38	17	6 44
28	22	7 34
26	20	8 26
14	m	9 20
9	19	10 15
8	1	11 14
6	17	morn.
4	15	1 10
2	15	2 8
57	29	3 3
50	23	3 56
51	26	4 47
29	3	5 35
17	23	6 23
e. 4	☽	7 10
50	19	7 56
37	8	8 43
24	13	9 30
11	25	10 17

D	Aspects, Holidays, Weather, &c.	FARMER'S CALENDAR.
1	St. David. ♄ stat.	The Postman has come, and the mail is opened! The farmer stops his work! The carpenter lays aside his broad axe! The shoe-maker lets fall his lap stone! The blacksmith leaves his iron in the fire! The doctor forgets his sick patient! The lawyer drops his quill, and the parson shuts his bible! Away, away they all hasten to the office, greedy for the news! Like hungry hounds around the shambles, longing for the first snap at the offals, they stand, and with feverish impatience wait the unbundling! Even old age and decrepitude has essayed to reach the place! Business is stop, and all other pleasures and cares are laid aside until the perusal is finished. Then the farmer and the mechanic, and the doctor, and the lawyer, and the priest, and the rest of them, all retire to their different employments no more satisfied and no more wise than they were before.
2	♃ S 2h morn.	
3	<i>a storm is</i>	
G	1st Sunday in Lent. <i>near</i>	
5	☾ in apo. Gr. along. ♀.	
6	Very low tides. <i>fine</i>	
7	♃ S 6h 45m eve. <i>again</i>	
8	♃ S 1h 35m morn.	
9	<i>snow or</i>	
10	♀ rises 4h 5m morn. <i>rain</i>	
G	2d Sunday in Lent.	
12	Gregory, Martyr. <i>high</i>	
13	Planet Herschel dis. 1781.	
14	<i>winds</i>	
15	♃ S 1h 7m morn.	
16	<i>much colder</i>	
17	St. Patrick. ☾ in per.	
G	3d Sunday in Lent. <i>fine</i>	
19		
20	Newton died 1727. <i>more</i>	
21	Benedict. ☉ enters ♀. <i>un-</i>	
22	<i>pleasant weather</i>	
23	♀ rises 4h 4m morn.	
24	<i>falling</i>	
G	4th Sun. in Lent. Mid. L. Sun. [Ann. of B.V.] Mary.	
26		
27	♃ S 0h 18m morn. <i>weather</i>	
28	♁ ☽ ♀. Spring tides.	
29	<i>for some</i>	
30	♁ ☉ ♃. <i>days</i>	
31	<i>rain</i>	

On the Exercising Ground, St. George's day, 1825, a gentleman was complaining to another, that it was cold and damp on the ground, and wished he had a horse—"there, my dear Sir," replied the other, "is a spare horse," pointing at the same time to a poor, miserable, half-starved garron, mounted by a bare-legged boy.

This world is a world that we live in—
To lend, or to spend, or to give in;
But, to beg, or to borrow, or get a man's own,
'Tis the very worst world that ever was known.

First Quar. 4th d. 10h. 11m. morn. Full Moon 11th d. 7h. 9m. eve.

D	D	☉	☉	Days' S	Sun's	☾	☾	R.	Moon	☾	High	
M	W	rises.	sets.	lent'h	sl.	dec.	N	A	& S.	south.	pl.	Water
1	G	5 42	6 18	12 36	4 4	21	5	morn.	4	0	Π	9 6
2	M	5 40	6 20	12 40	4 4	44	6	0	32	4	48	19 54
3	Tu	5 39	6 21	12 42	3 5	7	7	0	52	5	36	☽ eve. 42
4	W	5 37	6 23	12 46	3 5	30	8	1	33	6	24	13 1 30
5	Th	5 36	6 24	12 48	3 5	53	9	2	12	7	11	25 2 17
6	Fr	5 35	6 25	12 50	2 6	16	10	2	48	7	59	☾ 3 5
7	Sa	5 34	6 26	12 52	2 6	38	11	3	21	8	46	20 3 52
8	G	5 32	6 28	12 56	2 7	1	12	3	53	9	35	☾ 4 41
9	M	5 31	6 29	12 58	2 7	23	13	4	25	10	24	16 5 30
10	Tu	5 29	6 31	13 2	1 7	45	14	4	56	11	15	☽ 6 21
11	W	5 27	6 33	13 6	1 8	8	15	rises.	morn.	14	7	15
12	Th	5 26	6 34	13 8	1 8	30	16	8	18	0	9	29 7 56
13	Fr	5 24	6 36	13 12	1 8	52	17	9	30	1	6	☾ 8 12
14	Sa	5 22	6 38	13 16	0 9	13	18	10	38	2	5	28 9 11
15	G	5 21	6 39	13 18	F	9	35	19	11	41	3	5 10 11
16	M	5 20	6 40	13 20	0 9	56	20	morn.	4	6	27	11 12
17	Tu	5 18	6 42	13 21	1 10	11	21	0	36	5	5	☽ morn.
18	W	5 17	6 42	13 26	1 10	39	22	1	24	6	2	26 1 8
19	Th	5 15	6 45	13 30	1 11	0	23	2	5	6	55	☽ 2 1
20	Fr	5 14	6 46	13 32	1 11	20	24	2	40	7	46	23 2 52
21	Sa	5 18	6 47	13 34	1 11	41	25	3	12	8	34	☽ 3 40
22	G	5 11	6 49	13 38	2 12	1	26	3	43	9	21	20 4 27
23	M	5 10	6 50	13 40	2 12	21	27	4	13	10	7	☽ 5 18
24	Tu	5 9	6 51	13 42	2 12	41	28	4	42	10	53	15 5 59
25	W	5 7	6 53	13 46	2 13	0	☽	sets.	11	39	27	6 45
26	Th	5 6	6 54	13 48	2 13	21	1	8	11	eve.	25	☽ 7 31
27	Fr	5 5	6 55	13 50	2 13	40	2	9	8	1	12	22 8 18
28	Sa	5 3	6 57	13 54	3 13	59	3	10	1	2	0	☽ 9 6
29	G	5 2	6 58	13 56	3 14	18	4	10	50	2	48	15 9 54
30	M	5 0	7 0	14 0	3 14	37	5	11	6	3	36	27 10 42

Last Qu

D	M
G	5th S
2	☾ in
3	
4	St. A
5	Inf.
6	h se
7	
G	6th S
9	♂ se
10	
11	♀ ris
12	Very
13	Good
14	☽ S
G	East
16	East
17	East
18	☽ ☽
19	
20	☽ er
21	
G	1st S
23	St. G
24	
25	St. M
26	
27	Tide
28	
G	2d S
30	

825, a gen-
old and damp
ere, my dear
ating at the
n, mounted

Two Lawyers, when a knotty cause was o'er,
Shook hands, and were as good friends as before ;
'Zounds!' says the losing client, 'how come *yaw*
To be such friends, who were such foes just *naw*?
'Thou fool,' says one, 'we lawyers, though so keen,
'Like shears, ne'er cut *ourselves*, but *what's* between !'

own,
know.

7h.9m. eve.

h	pl.	High Water
0	Π	9 6
18	19	9 54
36	35	eve. 42
24	13	1 30
11	25	2 17
59	Q	3 5
46	20	3 52
35	17	4 41
24	16	5 30
15	15	6 21
n.	14	7 15
9	29	7 56
6	m	8 12
5	28	9 11
5	↑	10 11
6	27	11 12
5	18	morn.
2	26	1 8
55	#	2 1
46	23	2 52
34	3	3 40
21	20	4 27
7	19	5 18
53	15	5 59
39	27	6 45
25	8	7 31
12	22	8 18
0	Π	9 6
48	15	9 54
36	27	10 42

Last Quar. 18th d. 11h 5m morn. | New Moon 25th d. 10h 48m eve.

D	Aspects, Holidays, Weather, &c.	FARMER'S CALENDAR.
G	5th Sun. in Lent. <i>fine</i>	
2	☾ in apo.	
3	<i>much unsettled weather</i>	While repairing your fences
4	St. Ambrose. <i>with high</i>	remember, that a fence well
5	Inf. ♂ ☉ ♀. Low tides	made will stand a dozen times
6	h. sets 0h 36m morn. <i>winds</i>	as long as that which is poorly
7	<i>and</i>	made. Good fences make
G	6th Sun. in Lent. Palm Sun.	good neighbours. While you
9	♂ sets 8h 46m eve. <i>fine</i>	drive your business before
10	<i>showers</i>	you, and do your work well,
11	♀ rises 3h 57m morn.	all will be easy; but suffer it
12	Very high tides. <i>cooler</i>	to lag, or slight it, and soon it
13	Good Friday.	becomes a grievous burden.—
14	Y.S 11h eve. <i>finer with</i>	The condition of a farmer is
G	Easter Day. <i>signs of</i>	such, that he need never be
16	Easter Monday. <i>rain</i>	out of employment. His life
17	Easter Tuesday. Dr. Frank-	is filled with care and watch-
18	Π ☉ ♄. [lin died 1790.	fulness and continual exercise.
19	<i>very fine</i>	The attentive farmer is no
20	☉ enters ♄.	idler, even in the winter sea-
21	<i>more signs of rain</i>	son, although his fields are
G	1st Sun. after Easter. Low S.	bound with frost and covered
23	St. George. K. Geo. IV b. d.	with snow; yet his occupation
24	[kept.	requires his continued care
25	St. Mark. D. of Gloucester b.	and exertion. There is feed-
26	[1776. ☉ eclipsed invis.	ing and tending of the cattle,
27	Tides not very high.	getting home fuel and a thous-
28	<i>very pleasant</i>	and other items.
G	2d Sun. after Easter.	
30	<i>mild</i>	

NAUTICAL PERPLEXITY.—It was the custom of our pious ancestors to use Sternhold and Hopkin's translation of the Psalms in their churches. The minister appointed the portion to be sung, read it through, and then repeated the first line, which was sung; one of the deacons next read the remainder, line by line, giving time for the choir to sing a line between each reading. One of these Psalms begins thus:

'The Lord will come; and he will not
'Keep silence; but speak out.'

First Quar. 4th d. 3h. 11m. morn. Full Moon 11th d. 4h. 11m. morn.

D	D	☉	☉	Days	S	Sun's	☾	☾	R.	Moon	☾	High
M	W	rises.	sets.	len'tn	fa	dec.	N	A	& S.	south.	pl.	Water
1	Tu	4 59	7 1	14 2	3	14 56	6	morn.	4	24 25	11	30
2	W	4 58	7 2	14 4	3	15 13	7	0	30	5 11	21	eve. 17
3	Th	4 56	7 4	14 8	3	15 31	8	0	52	5 57	Q.	1 3
4	Fr	4 55	7 5	14 10	3	15 49	9	1	25	6 43	15	1 49
5	Sa	4 54	7 6	14 12	4	16 6	10	1	57	7 30	28	2 36
6	G	4 53	7 7	14 14	4	16 23	11	2	27	8 18	m	3 24
7	M	4 52	7 8	14 16	4	16 40	12	2	58	9 7	24	4 13
8	Tu	4 51	7 9	14 18	4	16 57	13	3	30	9 59	21	5 5
9	W	4 49	7 11	14 22	4	17 13	14	4	4	10 53	23	5 59
10	Th	4 48	7 12	14 24	4	17 29	15	4	42	11 52	m	6 52
11	Fr	4 47	7 13	14 26	4	17 45	16	rises.	morn.	22 7	7	59
12	Sa	4 45	7 15	14 30	4	18 0	17	9	30	0 53	1 8	44
13	G	4 44	7 16	14 32	4	18 15	18	10	31	1 55	22	9 1
14	M	4 43	7 17	14 34	4	18 30	19	11	22	2 57	23	10 3
15	Tu	4 43	7 17	14 34	4	18 44	20	morn.	3	56 22	11	2
16	W	4 42	7 18	14 36	4	18 59	21	0	30	4 53	22	11 59
17	Th	4 40	7 20	14 40	4	19 12	22	0	45	5 46	20	morn.
18	Fr	4 39	7 21	14 42	4	19 26	23	1	19	6 35	16	41
19	Sa	4 38	7 22	14 44	4	19 39	24	1	49	7 22	17	2 28
20	G	4 37	7 23	14 46	4	19 52	25	2	18	8 8	17	3 14
21	M	4 36	7 24	14 48	4	20 5	26	2	47	8 53	12	3 59
22	Tu	4 35	7 25	14 50	4	20 17	27	3	17	9 38	24	4 44
23	W	4 34	7 26	14 52	4	20 40	28	3	49	10 24	8	5 30
24	Th	4 33	7 27	14 54	4	20 51	29	4	24	11 10	19	6 16
25	Fr	4 32	7 28	14 56	3	20 61	30	sets.	11	57 11	7	3
26	Sa	4 31	7 29	14 58	3	21 2	1	8	48	eve. 45	12	7 51
27	G	4 31	7 29	14 58	3	21 12	2	9	33	1 33	24	8 39
28	M	4 30	7 30	15 0	3	21 23	3	10	15	2 20	25	9 26
29	Tu	4 29	7 31	15 2	3	21 32	4	10	52	3 7	18	10 13
30	W	4 28	7 32	15 4	3	21 42	5	11	26	3 53	Q.	10 59
31	Th	4 27	7 27	15 6	3	21 51	6	11	57	4 38	12	11 44

A sailor
the minist
if punctu

This be
K

'Shiver
zy' and

Last Qua

D	A
M	.
1	St. Ph
2	
3	Invent
4	Buona
5	Low ti
G	3d Sur
7	Y S 9
8	
9	♀ rise
10	☾ ecl
11	Tides
12	☾ in p
G	4th Su
14	Y S 8
15	
16	
17	♀ rise
18	Low t
19	Dunst
G	5th Su
21	☾ ent
22	Prs. o
23	
24	Ascen
25	h set
26	Calvin
G	Sun. t
28	
29	K. Ch
30	Y S 7
31	

our pious an-
tation of the
ed the portion
the first line,
he remainder,
line between

A sailor happened to step into the church, just in time to hear the minister read the former of these lines, which sounded as if punctuated thus:

'The Lord will come, and he will not.'

This being sung, the deacon rose and read the latter thus—

'Keep silence, but speak out.'

'Shiver my timbers,' says Jack, 'if these people are not crazy!' and immediately putting about, sheered off.

4h. 11m. morn.

h.	☾	High	Water
24	☽	11	30
11	☽	11	17
57	☽	1	3
43	☽	1	49
30	☽	2	36
18	☽	3	24
7	☽	4	13
59	☽	5	5
53	☽	5	59
52	☽	6	58
rn.	☽	7	59
53	☽	8	44
55	☽	9	1
57	☽	10	3
56	☽	11	2
53	☽	11	59
46	☽	20	morn.
85	☽	1	41
22	☽	17	28
8	☽	3	14
53	☽	12	3
38	☽	24	44
24	☽	8	5
10	☽	19	6
57	☽	11	7
45	☽	12	7
33	☽	24	8
20	☽	25	9
7	☽	18	10
53	☽	10	10
38	☽	12	11

Last Quar. 17th d. 6h. 45m. eve. | New Moon 25th d. 2h. 26m. eve.

D	Aspects, Holidays, Weather, &c.	FARMER'S CALENDAR.
1	St. Philip & St. James.	
2	<i>very fine</i>	Let farmers be careful in preparing seed; for they will reap a great advantage in doing so. The most approved mode of preparing wheat, rye, oats or barley, is to soak it from 12 to 14 hours in a strong brine, having salt-petre in it, and immediately before sowing, to mix with it enough of lime, or wood ashes, to make it so dry that it may be sown evenly. A crop of flax may be greatly increased by mixing with the seed an equal quantity of fine salt, and sowing it.
3	Invention of the Cross.	
4	Buonaparte died 1821.	
5	Low tides.	
6	3d Sun. af. East. St. John Ev.	
7	☽ S 9h 25m eve. <i>rain</i>	
8		
9	☽ rises 3h 30m morn.	
10	☾ eclipsed invisible.	
11	Tides very high.	
12	☾ in per. <i>fine for a</i>	
13	4th Sun. af. Easter. <i>few days</i>	
14	☽ S 8h 56m eve.	
15		
16		
17	☽ rises 3h 20m morn.	
18	Low tides. <i>remarkably</i>	
19	Dunstan. <i>fine</i>	
20	5th Sun. af. East. Rog. Sun.	
21	☉ enters II.	CATERPILLARS.—Destroy utterly every caterpillar; leave no nest undemolished on your fruit trees. This may be done by burning brimstone under their nests; by sprinkling ashes or fine sand on them and the limbs where they are, when wet, or by putting a mop or wisp of tow on a pole, and brushing their nests well with brine.
22	Prs. of Homburg b. 1770.	
23	<i>rain</i>	
24	Ascen. Day. Holy Thurs.	
25	☽ sets 9h 45m eve. <i>very</i>	
26	Calvin died 1564. <i>fine</i>	
27	6th Sun. af. Ascen. Day.	
28	<i>weather</i>	
29	K. Charles II. restored.	
30	☽ S 7h 5m eve.	
31	<i>changeable</i>	

The Clerk of a chapel in Birmingham previous to the commencement of the service, dirtied his hands by placing coals on the fire, and unconsciously rubbing his face, besmeared it so as to resemble the son of Vulcan. He had turned into the reading desk where he attracted much attention, which was considerably increased when he gave the first line of the Hymn—"Behold the brightness of my face." The congregation could no longer hold their gravity, and an involuntary laugh burst from every corner of the chapel.

First Quar. 2d d. 4h. 39m. even. Full Moon 9th d. 11h. 36m. morn.

D	M	☉	☽	Days' len'th	S fa	Sun's dec. N	☾ A	☾ R. & S.	Moon south.	☾ pl.	High Water							
1	Fr	4	27	7	33	15	6	3	21	59	7	morn.	5	23	24	eve.	29	
2	Sa	4	26	7	34	15	8	2	22	7	8	0	26	6	9	m	1	15
3	G	4	25	7	35	15	10	2	22	15	9	0	55	6	55	20	2	1
4	M	4	25	7	35	15	10	2	22	22	10	1	25	7	44	☾	2	50
5	Tu	4	24	7	36	15	12	2	22	29	11	1	58	8	36	17	3	42
6	W	4	24	7	36	15	12	2	22	35	12	2	33	9	31	m	4	37
7	Th	4	23	7	37	15	14	2	22	42	13	3	14	10	30	15	5	36
8	Fr	4	23	7	37	15	14	1	22	48	14	4	2	11	32	↑	6	38
9	Sa	4	22	7	38	15	16	1	22	54	15	rises.	morn.	16	7	16	7	40
10	G	4	22	7	38	15	16	1	22	59	16	9	9	0	34	☾	8	10
11	M	4	22	7	38	15	16	1	23	3	17	9	57	1	38	16	8	44
12	Tu	4	21	7	39	15	18	1	23	7	18	10	38	2	37	☾	9	43
13	W	4	21	7	39	15	18	1	23	11	19	11	15	3	33	15	10	39
14	Th	4	21	7	39	15	18	0	23	15	20	11	47	4	26	☾	11	32
15	Fr	4	20	7	40	15	20	8	23	18	21	morn.	5	14	15	morn.		
16	Sa	4	20	7	40	15	20	0	23	20	22	0	18	6	2	26	1	8
17	G	4	20	7	40	15	20	1	23	22	23	0	47	6	48	☾	1	54
18	M	4	20	7	40	15	20	1	23	24	24	1	17	7	33	21	2	39
19	Tu	4	20	7	40	15	20	1	23	26	25	1	47	8	18	8	3	24
20	W	4	20	7	40	15	20	1	23	26	26	2	21	9	4	16	4	10
21	Th	4	20	7	40	15	20	1	23	27	27	2	59	9	50	28	4	56
22	Fr	4	20	7	40	15	20	1	23	27	28	3	39	10	37	☾	5	43
23	Sa	4	20	7	40	15	20	2	23	27	29	4	2	11	25	24	6	31
24	G	4	20	7	40	15	20	2	23	26	☽	sets.	eve.	13	☾	7	19	
25	M	4	20	7	40	15	20	2	23	25	18	48	1	0	15	8	6	
26	Tu	4	20	7	40	15	20	2	23	23	29	9	23	1	46	27	8	52
27	W	4	20	7	40	15	20	3	23	21	39	55	2	33	☾	9	38	
28	Th	4	20	7	40	15	20	3	23	19	4	10	25	3	16	21	10	22
29	Fr	4	21	7	39	15	18	3	23	16	5	10	54	4	1	m	11	7
30	Sa	4	21	7	39	15	18	3	23	13	6	11	22	4	46	16	11	52

DREA
forerun
tell all y
employe
that—h
woman
denotes
tention.
you—ha
dream o

Last Qu

D	M	
1	☾	st
2	☾	S
3	G	Whit
4	☾	Whit
5	☾	Whit
6		
7	☾	sets
8		Mahc
9		High
10	G	Trini
11		St. P.
12		
13		
14	☾	ris
15	☾	☽
16		
17	G	1st S
18		
19		
20		
21	☾	☾
22	☾	en
23	☾	in
24	G	2d Su
25		
26		Not v
27	☾	☾
28	☾	sets
29		St. P.
30		

to the com-
placings coals
be smeared it
turned into the
, which was
of the Hymn
congregation
untary laugh

DREAMS.—To dream and remember your dream is a sure forerunner that you were not awake, nor very sound asleep. To tell all your dreams, prognosticates that you might be better employed. For a young man to dream of the lasses, foretells that—he thought of them before he went to sleep. For a young woman to dream very particularly of any certain young man, denotes that she—purchased her last bonnet to attract his attention. To dream of a person's nose, is the forerunner that you—have one of your own, if you—have never lost it. To dream of trouble is a harbinger of your—having trouble while

h.36m. morn.

Last Quar. 16th d. 4h.13m. morn. New Moon 24th d. 5h.50m. morn

pl.	High Water
23	24
9	15
5	1
4	50
6	42
1	37
0	36
2	38
n.	40
4	10
8	44
7	43
3	39
6	32
4	8
2	54
8	39
8	24
4	10
0	56
7	43
5	31
3	19
0	6
6	52
8	38
3	22
1	7
5	52

D	Aspects, Holidays, Weather, &c.	FARMER'S CALENDAR.
1	☾ stat. very	How pleasant and how profitable is a garden! "But gardening and farming are different things," says Peter Mopy,
2	☾ S 7h 38m eve. warm	"and a farmer should not be
G	Whit Sunday.	piddling in a garden when business of greater importance
4	Whit Monday.	requires." Hah! Mr. WHAT'S-YOUR-NAME, this business of
5	Whit Tuesday. D, of Cumb. [born 1772.	greater importance, I suppose,
6		is rolling nine-pins, going a
7	☽ sets 9h eve. showers	fishing or setting quail-traps.
8	Mahomet died 1632. about	Now, Sir, let me tell you that
9	High spring tides. this time	you have but a very scanty ac-
G	Trinity Sunday.	quaintance with your profes-
11	St. Barnabas.	sion. There is no piddling, no
12		wasting of time, attention or
13		expense in this business. A
14	☽ rises 2h 5m morn.	kitchen garden you must know
15	♂ ♀ ♂. cooler	Sir, is highly important to a
16	with frequent	farmer; for vegetables save
G	1st Sun. af. Trin. St. Alban. ruins	meat and promote health.—
18		How much vacant time has
19		every man, that might be spent
20	settled weather	profitably in his gardens? O,
21	♂ ☉ ♀.	'tis a most pleasant and rational
22	☉ enters ♄.	amusement! Let no one be
23	☾ in apo.	ashamed to be seen pulling up
G	2d Sun. af. Trin. Nativity of [St. John, Bap.	weeds in the garden—it is an
25		honorable employment.
26	Not very high tides.	
27	☾ ☉ ☽.	
28	☾ sets 1h 51m morn.	
29	St. Peter. look out	
30	for rain	

dreaming. To dream of happiness, shows you will probably be—disappointed when you awake. To dream of dancing, is a sure sign that you sometimes feel—frisky and hoppish.— Dreaming of a fall, tells you as plainly as a dream can, not to—step too much aside. To dream of marriage, is a never-failing token, that you, or some of your connexions, either have been, or will be—married. To dream of a funeral, infallibly denotes that some of your—ancestors have died before you.— To hear a death-watch, betokens that there is a little insect, or

a spider,
To hear—
you have
—can cel
that the v
years old

First Quar. 2d d. 2h.54m. morn. Full Moon 8th d. 6h.16m. even.

D	D	☺	☺	Days'	S	Sun's	☾	☾ R.	Moon	☾	High
M	W	rises.	sets.	len'th	sl.	dec.N	A	& S.	south.	pl.	Water
1	G	4 22	7 38	15 16	3 23	10 7	11 52	5	32	29	eve. 38
2	M	4 22	7 38	15 16	4 23	6 8	morn. 6	6	21	☾	1 27
3	Tu	4 22	7 38	15 16	4 23	1 9	0 26	7	13	☽	2 19
4	W	4 23	7 37	15 14	4 22	56 10	1 28	8	m	3	14
5	Th	4 23	7 37	15 14	4 22	51 11	1 44	9	7	☽	4 13
6	Fr	4 23	7 37	15 14	4 22	46 12	2 34	10	9	↑	5 14
7	Sa	4 24	7 36	15 12	4 22	40 13	3 33	11	11	☽	6 17
8	G	4 24	7 36	15 12	5 22	33 14	rises. morn.	☽	7	7	19
9	M	4 25	7 35	15 10	5 22	26 15	8 26	0	13	☽	8 49
10	Tu	4 26	7 34	15 8	5 22	19 16	9 51	12	☽	☽	8 18
11	W	4 26	7 34	15 8	5 22	12 17	9 40	2	7	☽	9 13
12	Th	4 27	7 33	15 6	5 22	4 18	10 12	3	0	☽	10 6
13	Fr	4 28	7 32	15 4	5 21	55 19	10 42	3	49	☽	10 55
14	Sa	4 29	7 32	15 4	5 21	47 20	11 13	4	37	☽	11 43
15	G	4 29	7 31	15 2	6 21	38 21	11 44	5	24	☽	morn. 1
16	M	4 30	7 30	15 0	6 21	28 22	morn. 6	6	10	☽	1 16
17	Tu	4 31	7 29	14 58	6 21	18 23	0 17	6	56	☽	2 2
18	W	4 32	7 28	14 56	6 21	8 24	0 53	7	43	☽	2 49
19	Th	4 33	7 27	14 54	6 20	58 25	1 33	8	30	☽	3 36
20	Fr	4 33	7 27	14 54	6 20	47 26	2 16	9	17	☽	4 23
21	Sa	4 34	7 26	14 52	6 20	36 27	3 4	10	5	☽	5 11
22	G	4 35	7 25	14 50	6 20	24 28	3 57	10	53	☽	5 59
23	M	4 36	7 24	14 48	6 20	12 29	☽ sets.	11	46	☽	6 46
24	Tu	4 37	7 23	14 46	6 20	0 17	55 eve.	26	☽	☽	7 32
25	W	4 39	7 21	14 42	6 19	47 28	26 1	12	18	☽	8 18
26	Th	4 40	7 20	14 40	6 19	34 38	56 1	57	☽	☽	9 3
27	Fr	4 41	7 19	14 38	6 19	21 49	24 2	42	13	☽	9 48
28	Sa	4 43	7 18	14 36	6 19	8 59	53 3	28	26	☽	10 34
29	G	4 43	7 17	14 34	6 18	54 6	10 25	4	16	☽	11 22
30	M	4 44	7 16	14 32	6 18	40 6	11 0	5	5	☽	11 22
31	Tu	4 45	7 15	14 30	6 18	25 8	11 40	5	58	☽	1 4

Last Quar

D	M	☽	☽
D	M	☽	☽
G	3d	Su	
2	Visit.		
3	Low t		
4			
5	☽ rise		
6			
7	☽ sets		
G	4th	Su	
9	Very		
10	Colum		
11			
12	☽ ☽		
13	☽ sets		
14	Frenc		
G	5th	Su	
16	Gr. elc		
17	Dr. W		
18	☽ rise		
19	K. Ge		
20	Margt		
21			
G	6th	Su	
23	☽ ent		
24	High		
25	St. Ja		
26	St. Ar		
27	☽ rise		
28			
G	7th	Su	
30			
31			

probably be
ancing, is a
hoppish.—
can, not to
is a never-
either have
infallibly
ere you.—
the insect, or

a spider, not a thousand miles from where you stand, sit, or ly.
To hear a dog howl, is a sure sign, that—he has lungs, and that
you have ears. To be born in January, denotes that the man
—can celebrate his birth day the forepart of every year; and
that the woman will—find cold weather the day she is thirty
years old.

A WILD-DUTCH PUZZLE.

The rew asar at, for wan tofs ta irs,
Ca med own ar ope—tog' ot opra yers.

.16m. even.

Last Quar. 15th d. 4h. 21m. eve. New Moon 23d d. 8h. 30m. eve.
First Quar. 31st d. 10h. 45m. morn.

☾	High	Water
29	eve.	38
1	1	27
2	2	19
3	m	3 14
4	4	13
5	5	14
6	6	17
7	7	19
8	8	49
9	8	18
10	10	6
11	10	55
12	11	43
13	morn.	
14	1	16
15	2	2
16	2	49
17	3	36
18	4	23
19	5	11
20	5	59
21	6	46
22	7	32
23	8	18
24	9	3
25	9	48
26	10	34
27	11	22
28	eve.	11
29	m	4

D	Aspects, Holidays, Weather. &c.	FARMER'S CALENDAR.
29	3d Sun. af. Trin. settled	BUTTER.
2	Visit. of B. V. Mary. weather	Awake, awake, my sweet dai- ry maids!
3	Low tides.	To your milk pans quick repair;
4	♀ rises 2h 46m morn.	Nor suffer the burning rays of the sun
5	☾ sets 11h 16m eve. this time	To curdle your cream so fair.
6	4th Sun. af. Trin. in some places	In this warm season, your milk should remain in the pail till nearly cool before it is strained; and, by putting a lit- tle hot water to it, your cream will rise in greater abundance.
7	Very high tides.	Let your pans be large and broad.—Never wait, in hot weather, till sun rise, before you skim the pans. Twenty four hours is long enough for the milk to stand, except in winter, when it may remain in the pans 36 or 48 hours.—
8	Columbus born 1447.	After the butter is churned, it should immediately be washed in several waters; and in working it, you will find two pieces of wood convenient to be used, for the hand is apt to soften it, and will some times give it a greasy appearance.
9	♂ ☉ ♃.	
10	☾ sets 10h 53m eve. fine	
11	French Revolution com. 1789	
12	5th Sun. af. Trin. weather	
13	Gr. elong. ♃.	
14	Dr. Watts born 1674.	
15	♀ rises 2h 57m morn.	
16	K. Geo. IV. crowned 1821.	
17	Margaret. some signs of rain.	
18	6th Sun. af. Trin. Magdalen.	
19	☉ enters ♍. becomes very warm.	
20	High tides.	
21	St. James. ♂ ♀ h. dog days begin	
22	St. Anne.	
23	♀ rises 3h 10m morn.	
24	☾ sets 11h 28m eve. excessively warm	
25	7th Sun. af. Trin. and sultry	
26		
27		
28		
29		
30		
31		

JONATHAN'S WEDDING.

MISTER PRINTER.—Sum big feeling fellers may, laf about this pece, and say it aynt spelt rite—but I guess how you wont find ane word in this but what is spelt rite.—Well, I spose you hant found out how I am god marrid, so I'll be darn'd if I dont tell you about it.

Nance Trulor, who lives close by my dad's just over the brook, crost the swomp, cum to our house one day when I was

Full Moon, 7th d. 1h. 26m. morn. | Last Quar. 14th d. 7h. 34m. morn.

D	D	☉	☉	Days'	S	Sun's	☾	☾ R.	Moon	☾	High
M	W	rises.	sets.	len'th	sl.	dec. N	A	& S.	south.	pl.	Water
1	W	4 46	7 14	14 28	6	18 10	9	morn. 6	53	20	1 49
2	Th	4 47	7 13	14 26	6	17 55	10	0 30	7 52	↑ 2	58
3	Fr	4 48	7 12	14 24	6	17 40	11	1 18	8 53	18	59
4	Sa	4 50	7 10	14 20	6	17 24	12	2 19	9 54	19	50
5	G	4 51	7 9	14 18	6	17 8	13	3 27	10 53	18	59
6	M	4 52	7 8	14 16	6	16 52	14	4 38	11 51	# 6	57
7	Tu	4 53	7 7	14 14	5	16 35	15	rises. morn.	18	7	52
8	W	4 54	7 6	14 12	5	16 19	16	8 11	0 46	✕ 8	44
9	Th	4 55	7 5	14 10	5	16 2	17	8 42	1 38	17	34
10	Fr	4 57	7 3	14 6	5	15 44	18	9 13	2 28	9 10	22
11	Sa	4 58	7 2	14 4	5	15 27	19	9 45	3 16	13 11	10
12	G	4 59	7 1	14 2	5	15 9	20	10 18	4 4	26 11	57
13	M	5 07	0 14	0	5	14 51	21	10 54	4 51	8	morn.
14	Tu	5 26	58 13	56	4	14 33	22	11 32	5 39	21	0 45
15	W	5 46	56 13	52	4	14 14	23	morn. 6	26	11	1 32
16	Th	5 56	55 13	50	4	13 55	24	0 30	7 14	15 2	20
17	Fr	5 66	54 13	48	4	13 37	25	1 18	2 27	3 8	
18	Sa	5 76	53 13	46	4	13 17	26	1 52	8 50	3 56	
19	G	5 96	51 13	42	3	12 58	27	2 47	9 38	20 4	44
20	M	5 106	50 13	40	3	12 38	28	3 46	10 25	5 31	
21	Tu	5 116	49 13	38	3	12 19	29	4 43	11 11	15 6	17
22	W	5 136	47 13	34	3	11 59	6	sets. 11	57	27 7	8
23	Th	5 146	46 13	32	2	11 38	17	31 eve.	43	7 49	
24	Fr	5 156	45 13	30	2	11 18	28	1 1	30	23 8	36
25	Sa	5 176	43 13	26	2	10 57	38	33 2	18	9 24	
26	G	5 186	42 13	24	2	10 37	49	7 3	7	19 10	13
27	M	5 206	40 13	20	1	10 16	59	44 3	59	m 11	5
28	Tu	5 216	39 13	18	1	9 55	6	10 28	4 53	16 11	59
29	W	5 226	38 13	16	1	9 34	7	11 18	5 50	↑ eve.	55
30	Th	5 246	36 13	12	1	9 12	8	morn. 6	49	14 1	53
31	Fr	5 266	34 13	8	0	8 51	9	9 35	7 48	29 2	54

going to
thinks I,
I to mise
got marri
and he m
lie didn't
liked her
her; so v
to cum an

New Mo

D	A
M	
1	Lamm
2	♀ rise
3	
4	♂ sets
6	8th Su
6	Trans
7	Name
8	High t
9	
10	St. La
11	r
13	9th Su
13	♂ sets
14	♀ rises
15	Tides
16	Duke
17	
18	
20	10th S
20	
21	Duke
22	♂ sta
23	☉ ent
24	St. Ba
25	♂ sets
25	11th S
27	Dr. H
28	St. A
22	St. Jo
30	Low t
31	

may, laf about how you wont ll, I spose you arn'd if I dont

just over the y when I was

7h.34m. mrrn.

moon	☾	High	
lth.	pl.	Water	
53	20	1	49
52	1	2	58
53	18	3	59
54	15	5	0
53	18	5	59
51	20	6	57
rn.	18	7	52
46	17	8	44
38	17	9	34
28	16	10	22
16	13	11	10
4	26	11	57
51	8		morn.
39	21	0	45
26	11	1	32
14	15	2	20
2	27	3	8
50	25	3	56
38	20	4	44
25	15	5	31
11	15	6	17
57	27	7	3
43	22	7	49
30	23	8	36
18	21	9	24
7	19	10	13
59	11		5
53	16	11	59
50	1	eve.	55
49	14	1	55
48	29	2	54

going to trainin, and talk'd to me about bein marrid. Gosh ! thinks I, what's that ; but arter I thot a little about it, thinks I to miself Dad got marrid, and Marm got marrid, and our Poll got marrid,I'll git marrid tu ! So I ast Dad if I mite get marrid; and he made up a grate mouth and scould up his face and said he didn't care nothing about it ; so I told Nance how that I liked her best of ane body ; and if she'll have me then I'll have her ; so we agreed on the day, and I spoke to squire Tie-not to cum and marry us.—I wanted to pay him in work, but he

New Moon 22d d. 10h.17m.mrrn. First Quar. 29th d. 5h. 7m.eve.

D	Aspects, Holidays, Weather, &c.	FARMER'S CALENDAR.
M		
1	Lammas Day. <i>rain</i>	A good hog-sty is a thing of more importance than many think for. A part of it should be close and warm with a tight roof over it.—
2	♀ rises 3h 20m morn.	The other part where the trough is placed should be open. Swine should not be wholly secluded from the weather and sunshine, and they will be injured by having cold and wet lodging. A large part of it should have no wooden floor. Some people think that any sort of a pen cobbled up with a board or two laid over, will do well enough to fat hogs in. This is a gross error. The more comfortably your hogs are kept, the less nourishment they will require. You perhaps are prejudiced in favor of the practices of your forefathers ; but if it has been their practice when they had fallen a tree, to hitch the team to the top of it and drag it out of the swamp, will you insist that the method is best because they prefer it?
3	<i>good weather</i>	
4	♂ sets 9h 33m eve. <i>for hay</i>	
G	8th Sun. af. Trin. <i>making</i>	
6	Transfig. of Our Lord.	
7	Name of Jesus. <i>improve it</i>	
8	High tides. <i>for it may</i>	
9	<i>not last long</i>	
10	St. Lawrence.	
11	<i>remember the old saying</i>	
G	9th Sun. af. Trin. K.Geo.IV	
13	♂ sets 9h eve. [b. 1762.	
14	♀ rises 3h 47m morn. "make	
15	Tides quite low. <i>hay while</i>	
16	Duke of York b. 1763. <i>the</i>	
17	<i>sun shines"</i>	
18		
G	10th Sun. af. Trin.	
20	<i>showers in many</i>	
21	Duke of Clarence b. 1785.	
22	♂ stat. <i>places</i>	
23	☉ enters ♍.	
24	St. Bartholomew.	
25	♂ sets 8h 21m eve.	
G	11th Sun. af. Trin.	
27	Dr. Herschel died 1822.	
28	St. Augustine.	
29	St. John Baptist beheaded.	
30	Low tides. <i>settled</i>	
31	<i>weather</i>	

IX. Month. SEPTEMBER, 30 days. 1827.

said he drother have beans arter harvest, and I thot twont best to lose the chance.—Well, such a darn site of boys and gale I never seed before; and when the squire told us to get up, I be darn'd if I did'nt blush behind the ears!—what he said I cant tell; I was so dumb-skart—but it was something about having me another for better and wos—but you know I am always makin varsis, I bleve twas sun like this—

You both agree now you have hold of hands,
Nance the woman, and Jonathan the man,
I raise corn, and she Johnny-cakes to make;
Each other to like and others forsake.

Full Moon 5th d. 10h.22m. mrn. Last Quar. 13th d. 1h.30m. mrn.

D	D	☉	☽	Days'	S	Sun's	☾	☾	R.	Moon	☾	High
M	W	rises.	sets.	length	fa	dec.	N	A	& S.	south.	pl.	Water
1	Sa	5 27	6 33	13 6	0 8	29 10	1 19	8 46	13 3	52		
2	G	5 29	6 31	13 2	1 8	7 11	2 20	9 44	28 4	50		
3	M	5 31	6 29	12 58	1 7	45 12	3 37	10 39	26 5	45		
4	Tu	5 32	6 28	12 56	1 7	23 13	4 48	11 32	26 6	38		
5	W	5 33	6 27	12 54	1 7	1 14	rises.	morn.	26 7	29		
6	Th	5 35	6 25	12 50	2 6	39 15	7 18	0 23	25 8	9		
7	Fr	5 36	6 24	12 48	2 6	16 16	7 51	1 13	25 8	39		
8	Sa	5 37	6 23	12 46	2 5	54 17	8 24	2 21	25 9	12		
9	G	5 39	6 21	12 42	3 5	31 18	8 59	2 50	25 9	56		
11	M	5 40	6 20	12 40	3 5	9 19	9 36	3 39	17 10	45		
10	Tu	5 42	6 18	12 36	3 4	46 20	10 18	4 27	29 11	33		
12	W	5 43	6 17	12 34	4 4	23 21	11 4 5	15 1	morn.			
13	Th	5 45	6 15	12 30	4 4	0 22	11 53	6 4 23	1 10			
14	Fr	5 46	6 14	12 28	4 3	37 23	morn.	6 52	1 58			
15	Sa	5 48	6 12	12 24	5 3	14 24	0 46	7 39	16 2	45		
16	G	5 49	6 11	12 22	5 2	52 25	1 41	8 26	29 3	32		
17	M	5 51	6 9	12 18	6 2	28 26	2 40	9 13	4 19			
18	Tu	5 52	6 8	12 16	6 2	4 27	3 42	10 0	23 5	6		
19	W	5 54	6 6	12 12	6 1	41 28	4 34	10 46	25 5	52		
20	Th	5 56	6 4	12 8	7 1	18 28	sets.	11 33	19 6	39		
21	Fr	5 57	6 3	12 6	7 0	54 1	6 44	eve.	22 7	28		
22	Sa	5 59	6 1	12 2	7 0	31 2	7 18	1 12	16 8	18		
23	G	6 0	6 0	12 0	8 0	8 3	7 55	2 4	29 9	10		
24	M	6 2 5	5 58	11 56	8 0	15 8	4 37	2 58	27 10	4		
25	Tu	6 3 5	5 57	11 54	8 0	38 5	9 24	3 54	27 11	0		
26	W	6 5 5	5 55	11 50	9 1	2 6	10 20	4 53	1 59			
27	Th	6 6 5	5 54	11 48	9 1	25 7	11 20	5 51	25 eve.	57		
28	Fr	6 8 5	5 52	11 44	9 1	48 8	morn.	6 49	25 1	55		
29	Sa	6 10 5	5 50	11 40	10 2	12 9	0 26	7 46	24 2	52		
30	G	6 11 5	5 49	11 38	10 2	35 10	1 35	8 39	23 3	45		

1827. S

I get a
put in just
tu! By
got a good
nite Sa! To
John shud
Squire; bu
go hum alo
about it, an
he gesses h

New Moon

D	As
M	
1	Giles.
6	12th Sun
3	♂ ♀ ♂
4	2 sets 7
5	
6	High Ti
7	
8	Nativity
6	13th Sun
10	
11	
12	
13	2 sets 7
14	Holy Cro
15	Very low
6	14th Sun
17	Lambert
18	♂ ♀ ♀
19	
20	Spring t
21	St. Matt.
22	
6	15th Sun
24	Sup. ♂
25	2 sets 7
26	St. Cypri
27	C. in pe
28	
29	St. Mich
6	16th Su

hot twont best boys and gale us to get up what he said I nething about know I am al ds, ke;

I get a swompla site of whisky, and mother said we might put in just as much maple sugar and lasses, as we was a mind to! By nip, I wonder they hadent all got drunk. The gale got a good treat, and after a while they all went home!—that nite Sa! Towyarn gin Joh Jehoe the mitten; she said as how John shud not go hum with her. I gess she ment to catch the Squire; but the Squire couldent walk a crack, so Sal had to go hum alone, by Gaully! John said he didnt care one copper about it; and went home with Moll Trudgealong, and dad says he gesses how twill be a match. Now thinks I to miself, as its

. 1h.30m.mrn.

New Moon 20th d. 11h. 17m. eve. | First Quar. 27th d. 11h. eve.

h.	pl.	High Water
46	W	3 52
44	28	4 50
39	25	5 45
32	26	6 38
rn.	27	7 29
23	25	8 9
13	25	8 39
2	21	9 12
50	8	9 56
39	17	10 45
27	29	11 33
15	L	morn.
4	23	1 10
52	25	1 58
39	16	2 45
26	29	3 32
13	Q	4 19
0	23	5 6
46	m	5 52
33	19	6 39
22	2	7 28
12	16	8 18
4	29	9 10
58	m	10 4
54	27	11 0
53	1	11 59
51	25	eve. 57
49	W	1 55
46	24	2 52
39	27	3 45

D	Aspects, Holidays, Weather, &c.
1	Giles.
G 12th	Sunday af. Trin. London
3	♂ ♀ ♂. [burnt 1666, O S]
4	2 sets 7h 50m eve.
5	<i>changeable</i>
6	High Tides. <i>weathes</i>
7	<i>dog days end</i>
8	Nativity of B. V. Mary.
G 13th	Sunday after Trin.
10	
11	<i>fine weather</i>
12	
13	2 sets 7h 21m eve.
14	Holy Cross. Moscow burnt
15	Very low tides. [1812.
G 14th	Sun. af. Trin.
17	Lambert. <i>changeable</i>
18	♂ ♀ ♀. <i>but fine</i>
19	
20	Spring tides.
21	St. Matthew.
22	
G 15th	Sun. af. Trin. ☉ enters ♎
24	Sup. ♂ ☉ ♀. <i>graux cooler</i>
25	2 sets 6h 43m eve.
26	St. Cyprian.
27	☾ in perigee. <i>cool nights</i>
28	
29	St. Mich. Q. of Wirt. b. 1766.
G 16th	Sun. af. Trin. St. Jerome.

FARMER'S CALENDAR.
Seeds of various sorts are now daily ripening; care therefore must be taken to gather and dry them properly—for on good seeds all the future excellence of your crop depends; and if you have more than you want for your own use, the seedsman will either buy them of you, or exchange them for others. A good cultivator will very rarely be under the necessity of laying out money for seeds, but will usually save enough to make them profitable, besides supplying his own wants.
<i>Cutting of Rye.</i> —This subject is of vast importance.—Rye should be cut as soon as possible after the milk is out of the berry or kernel; then bind it in small sheaves and shock them thus: set 4 or 5 according to their size, together, then place on a cap-sheaf. Let them stand till perfectly dry, and then secure them in a barrack or on a scaffold, not on a mow of hay.

the fashion to have marriages printed, I should be as glad as a dog with tu tales, to have mine put in; and if you can afford to do it, I and my wife and Dad, uncle Tom and ant Pat, and our folks would be glad to read it.

JONATHAN JUNIPER.

King James I. of England, went out of his way to hear a noted preacher. The clergyman, seeing the King enter, departed from the train of his discourse, and dwelt on the sin of profane swearing; for which the King was notorious. When

done, Jam
connexion
your Maje
complaisa

In the s
his compar
Night com
the roof of

Full Moon 4th d. 10h. 5m. eve. | Last Quar. 12th d. 9h. 3m. eve.

D	D	☉	☉	Days'	S	Sun's	☾	☾	R.	Moon	☾	High
M	W	rises.	sets.	len'th	fa.	dec. S	A	& S.		south.	pl.	Water
1	M	6 13	5 47	11 34	16 2	59 11	2 43	9 32	22 4	38		
2	Tu	6 14	5 46	11 32	11 3	22 12	3 52	10 23	3 5	18		
3	W	6 16	5 44	11 28	11 3	45 13	5 0	11 13	20 5	59		
4	Th	6 17	5 43	11 26	11 4	8 14	rises.	morn.	9 6	40		
5	Fr	6 19	5 41	11 22	12 4	32 15	6 31	0 1	16 7	21		
6	Sa	6 20	5 40	11 20	12 4	55 16	7 50	50 29	8 8	2		
7	G	6 22	5 38	11 16	12 5	18 17	7 41	1 39	8 8	45		
8	M	6 23	5 37	11 14	12 5	41 18	8 21	2 28	24 9	34		
9	Tu	6 25	5 35	11 10	13 6	4 19	9 6	3 18	10 10	22		
10	W	6 26	5 34	11 8	13 6	27 20	9 54	4 5	19 11	11		
11	Th	6 27	5 33	11 6	13 6	49 21	10 45	4 53	25 11	59		
12	Fr	6 29	5 31	11 2	13 7	12 22	11 40	5 41	12 morn.			
13	Sa	6 30	5 30	11 0	14 7	35 23	morn.	6 28	24 1	34		
14	G	6 32	5 28	10 56	14 7	57 24	0 36	7 14	2 2	20		
15	M	6 34	5 26	10 52	14 8	20 25	1 35	8 0	19 3	6		
16	Tu	6 35	5 25	10 50	14 8	42 26	2 36	8 45	13 3	51		
17	W	6 37	5 23	10 46	15 9	4 27	3 38	9 32	14 4	38		
18	Th	6 38	5 22	10 44	15 9	26 28	4 43	10 20	27 5	26		
19	Fr	6 40	5 20	10 40	15 9	48 29	5 49	11 9	6 15			
20	Sa	6 41	5 19	10 38	15 10	10 30	6 sets.	eve.	24 7	8		
21	G	6 43	5 17	10 34	15 10	31 1	6 39	0 56	18 8	2		
22	M	6 44	5 16	10 32	15 10	53 2	7 27	1 54	23 9	0		
23	Tu	6 46	5 14	10 28	16 11	14 3	8 21	2 53	1 9	59		
24	W	6 47	5 13	10 26	16 11	35 4	9 20	3 52	22 10	58		
25	Th	6 48	5 12	10 24	16 11	56 5	10 24	4 50	11 56			
26	Fr	6 50	5 10	10 20	16 12	17 6	11 32	5 48	20 eve.	54		
27	Sa	6 51	5 9	10 18	16 12	37 7	morn.	6 42	1 48			
28	G	6 53	5 7	10 14	16 12	56 8	0 41	7 34	18 2	40		
29	M	6 54	5 6	10 12	16 13	18 9	1 49	8 24	3 30			
30	Tu	6 55	5 5	10 10	16 13	37 10	2 55	9 12	16 4	18		
31	W	6 57	5 3	10 6	16 13	57 11	4 1	10 0	29 5	6		

New Moon

D	As
M	
1	
2	Maj. A
3	
4	stati
5	
6	High T
7	17th Su
8	
9	St. Den
10	♂ rises
11	☾ apog
12	Tides c
13	☾ ♀
14	18th Su
15	♂ ♀
16	
17	
18	St. Luk
19	
20	☾ ecli
21	G 19th Su
22	High T
23	☾ ente
24	♂ rise
25	Crispi
26	h S 5
27	
28	G 20th S
29	
30	♂ rise
31	

be as glad as a
ou can afford to
at Pat; and our
AN JUNIPER.

way to hear a
King enter, de-
felt on the sin of
rious. When

done, James thanked him for his sermon. but asked him what connexion swearing had with the text. He answered, "since your Majesty came out of your way to meet me, I could not in complaisance do less than go out of mine to meet you."

In the sixth century, Al Nooman, king of Hira, once lost his companions and his way while on a hunting excursion.—Night coming on, he at length found shelter and rest under the roof of a poor Arab. Soon after this, the king, in a drunk-

d. 9h. 3m. eve.

New Moon 20th d. 11h. 33m. mn. First Quar. 27th d. 5h. 34m. mn.

Moonth.	☾ pl.	High Water
32	22	4 38
23	☿	5 18
13	20	5 59
morn.	☽	6 40
1	16	7 21
50	20	8 2
39	8	8 45
28	24	9 34
18	☿	10 22
5	19	11 11
53	☽	11 59
41	12	morn. 34
28	24	1 34
14	☽	2 20
0	19	3 6
45	☿	3 51
32	14	4 38
20	27	5 26
9	☽	6 15
e. 2	24	7 8
56	☿	8 2
54	23	9 0
53	↑	9 59
52	22	10 58
50	☽	11 56
48	20	eve. 54
42	☽	1 48
34	18	2 40
24	☿	3 30
12	16	4 18
0	29	5 6

D	Aspects, Holidays, Weather, &c.	FARMER'S CALENDAR.
1		
2	Maj. Andre executed 1780.	Cider.—Apples which fall
3	<i>very fine</i>	early should be gathered and
4	☿ stationary. <i>for this time</i>	made into cider for immediate
5		use and for vinegar. Suffer
6	High Tides. <i>cooler with</i>	the full apples to hang on the
G	17th Sunday af. Trin. <i>rain</i>	trees till ripe, then gather
8		them, and keep them housed
9	St. Denys.	until they are mellow. They
10	♂ rises 3h 49m morn.	should be sorted before they
11	☾ apogee. <i>changeable</i>	are ground, and all dirt and
12	Tides quite low. <i>weather</i>	rotten apples removed. Let
13	☿ ☽ h.	the mill, press, vats and bar-
G	18th Sun. af. Trin.	rels, be clean and sweet. The
15	♂ ♀ ♃ 8h eve.	juice should stand in the pom-
16	<i>warm days</i>	ace 12 hours at least, which
17	<i>but cool nights</i>	will give the cider a higher
18	St. Luke. ☽ ☽ ♃ ☿ ☽ ☿.	colour and render it richer.
19	<i>rain</i>	As soon as the cider is work-
20	☽ eclipsed invisible.	ed, let it be racked, and put
G	19th Sun. af. Trin.	in clean casks or bottles.
22	High Tides.	
23	☽ enters ♍. ☾ perigee.	
24	♂ rises 3h 41m morn.	
25	Crispin.	Beer.—To refine and clar-
26	♂ S 5h 27m morn.	ify it, put into a barrel of beer
27		a piece of burnt chalk of the
G	20th Sun. af. Trin. St. Simon	size of an hen's egg, and it
29	[and St. Jude]	will be brisk to the last.
30	♂ rises 3h 38m morn.	
31	<i>quite cold</i>	

en frolic, ordered two of his intoxicated companions to be burned alive. When the hour of intoxication had passed, and he had become sober, he bitterly repented of his crime; and in order to expiate his offence, he set apart two days in every year in honor of his companions. On the first of these days, he sacrificed the first person he met; and on the second, dismissed the first who met him with magnificent presents.

On one of these unfortunate days, he met, as the first person, the Arab, who so kindly entertained him when lost. In gratitude for this favour, the king, at the request of the Arab, grant-

Full Moon 3d d. 1 h. eve.										Last Quar. 11th d. 4 h. 45 m. eve.											
D	D	☉	☉	Days	S	Sun's	☾	☾	R.	Moon	☾	High									
M	W	rises.	sets.	len th	fa.	dec.	A	& S.		south.	pl	Water	D	A							
1	Th	6	58	5	2	10	4	16	14	17	12	5	6	10	47	☽	5	53	1	All Sa	
2	Fr	7	0	5	0	10	0	16	14	36	13	6	8	11	35	☽	25	6	40	2	All So
3	Sa	7	1	4	59	9	58	16	14	55	14	rises.	morn.	8	7	☽	7	20	3	Prin. S	
4	G	7	3	4	57	9	54	16	15	14	15	6	21	0	24	☽	20	8	0	5	21st Su
5	M	7	4	4	56	9	52	16	15	31	16	7	3	1	13	☽	18	8	39	6	Powder
6	Tu	7	5	4	55	9	50	16	15	51	17	7	49	2	1	15	☽	9	17	6	
7	W	7	6	4	54	9	48	16	16	9	18	8	39	2	49	☽	27	9	55	7	h S 3h
8	Th	7	7	4	53	9	46	16	16	26	19	9	32	3	37	☽	25	10	43	8	Prs. Au
9	Fr	7	9	4	51	9	42	16	16	44	20	10	24	4	24	☽	20	11	30	9	
10	Sa	7	10	4	50	9	40	16	17	1	21	11	25	5	10	☽	morn.			10	♂ rises
11	G	7	11	4	49	9	38	16	17	18	22	morn.	5	55	14	☽	1	1		11	2d Sun
12	M	7	13	4	47	9	34	16	17	34	23	0	30	6	39	☽	26	1	45	12	Low T
13	Tu	7	14	4	46	9	32	16	17	51	24	1	23	7	24	☽	22	2	30	13	
14	W	7	15	4	45	9	30	15	18	7	25	2	25	8	9	☽	22	3	15	14	h S 4h
15	Th	7	16	4	44	9	28	15	18	22	26	3	29	8	57	☽	4	3		15	
16	Fr	7	17	4	43	9	26	15	18	38	27	4	35	9	47	☽	18	4	53	16	
17	Sa	7	18	4	42	9	24	15	18	53	28	5	44	10	40	☽	5	46		17	♂ ☾
18	G	7	19	4	41	9	22	15	19	7	♂	sets.	11	37	17	☽	6	43		18	23d Sun
19	M	7	20	4	40	9	20	14	19	22	1	6	5	eve.	36	☽	7	42		19	Tides v
20	Tu	7	22	4	38	9	16	14	19	36	2	7	41	37	16	☽	8	43		20	♀ stat.
21	W	7	23	4	37	9	14	14	19	49	3	8	9	2	38	☽	9	44		21	
22	Th	7	24	4	36	9	12	14	20	3	4	9	17	3	37	☽	16	10	43	22	Cecelia
23	Fr	7	25	4	35	9	10	13	20	15	5	10	28	4	35	☽	11	41		23	St. Cle
24	Sa	7	26	4	34	9	8	13	20	28	6	11	38	5	29	☽	15	eve.	35	24	♂ ♀
25	G	7	27	4	33	9	6	13	20	40	7	morn.	6	19	☽	21	25		25	G 24th Su	
26	M	7	28	4	32	9	4	12	20	52	8	0	45	7	7	☽	2	18		26	h S 3h
27	Tu	7	29	4	31	9	2	12	21	3	9	1	56	7	54	☽	16	3	0	27	Low ti
28	W	7	30	4	30	9	0	12	21	14	10	2	54	8	41	☽	3	47		28	♂ rises
29	Th	7	31	4	29	8	58	11	21	25	11	3	52	9	27	☽	4	33		29	
30	Fr	7	31	4	29	8	58	11	21	35	12	4	57	10	14	☽	5	20		30	St. An

ed him a province, One in th and the A the year, On the tonished e fer yourse of your su taught me

New Moon	
D	A
1	All Sa
2	All So
3	Prin. S
5	21st Su
6	Powder
7	h S 3h
8	Prs. Au
9	
10	♂ rises
G	2d Sun
12	Low T
13	
14	h S 4h
15	
16	
17	♂ ☾
G	23d Sun
19	Tides v
20	♀ stat.
21	
22	Cecelia
23	St. Cle
24	♂ ♀
G	24th Su
26	h S 3h
27	Low ti
28	♂ rises
29	
30	St. An

1827.

1827. NOVEMBER begins on Thursday. Autumn.

ions to be burn-
passed, and he
crime; and in
days in every
of these days, he
second, dismiss-
ents.
the first person,
lost. In grati-
the Arab, grant-

ed him a year's respite, and permitted him to go to a distant province, provided he could obtain any one to be his security. One in the court, in compassion, offered himself for his surety, and the Arab departed, promising to return at the expiration of the year, and suffer death.

On the day appointed, the Arab returned. The king, astonished at his return, inquired, "Why have you come to offer yourself to death when you might have escaped by the death of your substitute?" "My religion, said the Arab, calmly, taught me to do so." "What is your religion?" "The reli-

. 4 h. 45 m. eve.

New Moon 18th d. 11h. 5m. eve. First Quar. 25th d. 2h. 4m. eve.

oon C High
uth. pl Water

D Aspects, Holidays,
M Weather, &c. FARMER'S CALENDAR.

47	9	5	53
35	25	6	40
8	7		20
24	20	8	0
13	II	8	39
1	15	9	17
49	27	9	55
37	25	10	43
24	20	11	30
10	8		morn.
55	14	1	1
39	26	1	45
24	17	2	30
9	22	3	15
57	2	4	3
47	18	4	53
40	13	5	46
37	17	6	43
e. 36	1	7	42
37	16	8	43
38	15	9	44
37	16	10	43
35	11	11	41
29	15		eve. 35
19	29	1	25
7	2		13
54	16		0
41	9		47
27	22		33
14	8		20

1	All Saints.	<i>colder</i>	
2	All Souls.	<i>and</i>	<i>Foddering cattle.</i> —It is re-
3	Prin. Sophia b. 1777. ☾ ecl.		commended not to begin to
G 21st	Sun. af. Trin. [parly vis.		fodder with your poorest ma-
5	Powder Plot 1605.	<i>more</i>	terials, as cold weather in-
6		<i>comfortable</i>	creases the appetite of your
7	½ S 3h 30m morn.		cattle, and they will eat in the
8	Prs. Augusta Sephia b. 1768.		depth of winter what they re-
9		<i>fair</i>	ject at its commencement.—
10	♂ rises 3h 28m morn.		Corn-stalks, and coarse clover
G 22d	Sun. af. Trin. St. Martin.		stalks, will be eaten if proper-
12	Low Tides.	<i>and pleasant</i>	ly cut with a straw-cutter.—
13			No farmer should be without
14	½ S 4h 25m morn.		a straw-cutter. Even if he in-
15		<i>fine weather</i>	tends his straw forlitter and
16			manure, he ought to have it.—
17	♂ ☾ ♃.		A little salt or good brine mix-
G 23d	Sun. af. Trin.		ed with the cut straw, &c. will
19	Tides very high.		be beneficial. A quarter of an
20	♀ stat. ☾ per.		ounce of salt per day to sheep,
21			and an ounce to oxen and cows
22	Cecelia. ☉ enters ♄.		is allowance ample enough.—
23	St. Clement.		Cattle too, often suffer for want
24	♂ ♃ ♀.	<i>colder</i>	of salt. If given to horses once
G 24th	Sun. af. Trin. Dr Watts		or twice a week, it effectually
26	½ S 3h 20m morn. [died '48		secures them against the botts.
27	Low tides.	<i>with</i>	Cattle that run out during the
28	♂ rises 3h 10m morn.	<i>an</i>	winter, ought by all means to be
29		<i>appearance of snow</i>	fed from a rack, and have a
30	St. Andrew. Inf. ♃ ☉ ♃.		good shelter.

gion of Jesus Christ! The prince delighted to hear of a religion that led to such conduct, inquired into its nature—embraced it—saved the life of the christian Arab—abolished his cruel custom—and thus was christianity introduced into his kingdom.

If there be a pleasure on earth which angels cannot enjoy, and which they might almost envy man the possession of, it is the power of relieving distress. If there be a pain which fiends

might p
we poss
ed and
With
have a
mong th
Whe
always
often ch

Full Moon 2d d. 8h. 36m. mrrn. Last Quar. 11th d. 11h. 2m. mrrn.

D	D	☉	☽	Days	S.	Sun's	☾	☾	R.	Moon's	☾	High
M	W	rises.	sets.	len th	fa.	dec.	S	A	& S.	south.	pl.	water.
1	Sa	7 32 4	28 8	56	11	21 45	13 5	56	11	1 17 6	7	
2	G	7 33 4	27 8	54	10	21 54	14 6	53	11	49 39 6	55	
3	M	7 34 4	26 8	52	10	22 3	15	rises.	morn.	11 7	35	
4	Tu	7 34 4	26 8	52	10	22 11	16 6	25 0		37 23 8	15	
5	W	7 35 4	25 8	50	9	22 19	17 7	18 1		25 25 8	56	
6	Th	7 36 4	24 8	48	9	22 27	18 8	12 2		12 17 9	18	
7	Fr	7 36 4	24 8	48	8	22 34	19 9	8 2		58 29 10	4	
8	Sa	7 37 4	23 8	46	8	22 41	20 10	4 3		48 10	49	
9	G	7 37 4	23 8	46	7	22 47	21 11	2 4		26 23 11	32	
10	M	7 38 4	22 8	44	7	22 53	22 11	59 5		10 m	morn.	
11	Tu	7 38 4	22 8	44	6	22 59	23	morn.	5	54 17 1	0	
12	W	7 39 4	21 8	42	6	23 3	24 1	2 6		38 21	44	
13	Th	7 39 4	21 8	42	6	23 8	25 2	6 7		26 13 2	32	
14	Fr	7 39 4	21 8	42	5	23 12	26 3	11 8		15 26 3	21	
15	Sa	7 39 4	21 8	42	5	23 15	27 4	19 9		8 m	4	14
16	G	7 40 4	20 8	40	4	23 18	28 5	28 10		5 25 5	11	
17	M	7 40 4	20 8	40	4	23 21	29 6	36 11		5 1 6	11	
18	Tu	7 40 4	20 8	40	3	23 23	30	sets.	eve.	7 25 7	13	
19	W	7 40 4	20 8	40	3	23 25	1 6	43 1		9 13 8	15	
20	Th	7 40 4	20 8	40	2	23 26	2 7	56 2		9 23 9	15	
21	Fr	7 40 4	20 8	40	2	23 27	3 9	93		7 10	13	
22	Sa	7 40 4	20 8	40	1	23 27	4 10	19 4		0 25 11	6	
23	G	7 40 4	20 8	40	1	23 27	5 11	28 4		51 21 11	57	
24	M	7 40 4	20 8	40	1	23 26	6	morn.	5	39 23	eve.	45
25	Tu	7 40 4	20 8	40	1	23 25	7 0	34 6		27 1	33	
26	W	7 40 4	20 8	40	1	23 23	8 1	36 7		13 19 2	19	
27	Th	7 40 4	20 8	40	1	23 21	9 2	38 8		0 13 3	6	
28	Fr	7 39 4	21 8	42	2	23 19	10 3	38 8		46 14 3	51	
29	Sa	7 39 4	21 8	42	2	23 16	11 4	36 9		33 26 4	39	
30	G	7 39 4	21 8	42	2	23 12	12 5	26 10		21 11 5	27	
31	M	7 39 4	21 8	42	2	23 9	13 6	20 11		9 20 6	15	

New M

D	M
1	
2	Adv
3	Tid
4	h S
5	
6	Nick
7	♂ r
8	Con
9	2d S
10	♀ s
11	♀ S
12	Low
13	Luc
14	Wal
15	♂ C
16	3d S
17	♂ r
18	☾ r
19	Tid
20	h S
21	St.
22	☉ e
23	G 4th
24	
25	Chr
26	St.
27	St. J
28	Inn
29	♀ s
30	G 1st
31	

1827.

1827. DECEMBER begins on Saturday. Winter.

hear of a re-
nature—em-
abolished his
uced into his

cannot enjoy,
ession of, it is
n which fiends

11h. 2m. morn.

on's C High
uth. pl. water.

1	17	6	7
49	20	6	55
orn.	II	7	35
37	23	8	15
25	25	8	56
12	17	9	18
58	29	10	4
48	31	10	49
26	23	11	32
10	m	morn.	
54	17	1	0
38	2	1	44
26	13	2	32
15	26	3	21
8	m	4	14
5	25	5	11
5	1	6	11
7	25	7	13
9	13	8	15
9	23	9	15
7	m	10	13
0	25	11	6
51	26	11	57
39	23	eve.	45
27	m	1	33
13	19	2	19
6	18	3	6
46	14	3	51
33	26	4	39
21	II	5	27
9	20	6	15

might pity men for enduring, it is the death-bed reflection, that we possessed the power of doing good, but that we have abused and perverted it to ill purposes.

Without a friend the world is but a wilderness. A man may have a thousand intimate acquaintances, and not a friend among them all. If you have one friend, think yourself happy.

When once you profess yourself a friend, endeavour to be always such. He can never have any true friends who will be often changing their

New Moon 18th d. 9h. 51m. morn. First Quar. 25th d. 1h. 33m. mn.

D	Aspects, Holidays, Weather, &c.	FARMER'S CALENDAR.
1	<i>snow or rain.</i>	
G	Advent Sunday.	Reader! another year has gone to mingle with a past Eternity; but it has left a record of your conduct at the court of Heaven. There it will meet you, when the last trump shall summon you to judgment. Will it testify to your shame, or to your joy! You are one year nearer death; but are you one year nearer Heaven? Have you done as you would be done by, avoided known sins, improved all your time, and been charitable to the poor? Have you loved Christ more than the world, and your neighbour as yourself? Have you made friends of death, and of your final Judge? What have you done for your fellow men, for your own soul, for Christ? Let omniscience—let the retributions of eternity answer.
3	Tides common.	
4	h S 2h 47m morn.	
5		
6	Nicholas.	
7	♂ rises 3h morn. <i>snow</i>	
8	Conception of B. V. Mary.	
G	2d Sun. in Advent. Milton b.	
10	♀ sets 5h. 32m. eve.	
11	♂ S 2h 7m morn.	
12	Low tides. <i>cold but pleasant</i>	
13	Lucy.	
14	Washington died 1799 <i>A. 68</i>	
15	♂ C ♀. ♀ C ♂. <i>a storm is near</i>	
G	3d Sun. in Advent.	
17	♂ rises 2h 38m morn.	
18	C in per.	
19	Tides remarkably high.	
20	h S 1h 29m morn.	
21	St. Thomas. <i>more snow</i>	
22	☉ enters ♍.	
G	4th Sun. in Advent.	
24		
25	Christmas Day. Newton b. [1642.	
26	St. Stephen.	
27	St. John. <i>cold and freezing</i>	
28	Innocents.	
29	♀ sets 6h eve.	
G	1st Sun. af. Christmas.	Men will wrangle for religion—write for it—fight for it—and do any thing but—
31	<i>keep your feet dry</i>	<i>live for it.</i>

PROVINCE OF NOVA-SCOTIA.

Lieutenant Governor and Commander in Chief of the Province of Nova-Scotia and its Dependencies, and Commander of the Forces in Nova-Scotia, New-Brunswick, Prince Edward Island, &c. &c. &c. His Excellency Lieutenant General SIR JAMES KEMPT, Knight Grand Cross of the Most Honorable Military Order of the Bath, &c. &c. &c.

HIS MAJESTY'S COUNCIL.

Honourable Sampson Salter Blowers, President.
Honourable and Right Reverend John Lord Bishop of Nova Scotia, Hon. Michael Wallace, Richard J. Uniacke, Charles Morris, James Stewart, Thomas N Jeffery, Brenton Haliburton, Hibbert N Binney, Enos Collins, Simon B. Robie and Charles R Prescott.
Clerk, Sir R. D. George, Bart.; Dep. Clerk, William Hill, Esq.; Chaplain, Revd. Robert Willis, D.D.; Messenger, Mr.

HOUSE OF ASSEMBLY.

	Speaker.
<i>County of Halifax.</i> —S G W Archibald, Wm Lawson, Geo Smith and Lawrence Hartshorne, Esq.	<i>Town of Halifax.</i> —C R Fairbanks and Beamish Murdoch, Esqrs.
<i>County of Annapolis.</i> —T C Halliburton and Wm Roach, Esquires.	<i>Truro.</i> —C D Archibald, Esq
<i>County of Cumberland.</i> —A. Stewart and Jos Oxley, Esqrs.	<i>Onslow.</i> —J Crow, Esq.
<i>County of Lunenburg.</i> —Lot Church and Wm Rudolf, Esqrs.	<i>Londonderry.</i> —J Wier, Esq.
<i>King's County.</i> —John Starr and Samuel Bishop, Esqrs.	<i>Annapolis.</i> —Jas R Lovett, Esq.
<i>Queen's County.</i> —Jos Freeman and John Barss, Esqrs.	<i>Granville.</i> —T Ruggles, Esq
<i>Hants County.</i> —Benj DeWolf and John McKay, Esqrs.	<i>Digby.</i> —J Morton, Esq.
<i>County of Shelburne.</i> —John McKinnon and J B Moody, Esqrs.	<i>Lunenburg.</i> —Jno Heckman, Esq.
<i>County of Sydney.</i> —Thomas Dickson and John Young, Esqrs	<i>Amherst.</i> —Jas S Morse, Esq.
<i>County of Cape Breton.</i> —Lawrence Kavanagh and R J Uniacke, Esqrs.	<i>Horton.</i> —Jas Harris, Esq.
	<i>Cornwallis.</i> —John Morton, Esq.
	<i>Windsor.</i> —David Dill, Esq.
	<i>Falmouth.</i> —W H Shey, Esq.
	<i>Barrington.</i> —J Homer, Esq.
	<i>Liverpool.</i> —Jas R Dewolf, Esq.
	<i>Newport.</i> —Shubael Dimock, Esq.
	<i>Shelburne.</i> —N W White, Esq.
	<i>Yarmouth.</i> —S S Poole, Esq.

Surve
er, Hon.
Baronet

Chan
the Roll
Brenton
J G Mar
sellers

Cou
His M
tornies

Judge
Solicitor
Pennell
Putnam
cates an
senger,

Comm
pert D
Court

Surre
ander

Chie
Hon B
Wilkin
ney Ge
Esq L
Fraser
out the
ting, E

Barris

HAL
R J U
W Joh
Bliss,
Drean

Provincial Officers.

Surveyor General of Lands, Hon. Charles Morris—Treasurer, Hon. Michael Wallace—Secretary, Sir Rupert D. George, Baronet.

Court of Chancery.

Chancellor, his Excellency Sir James Kempt; Master of the Rolls, Hon S B Robt, L L D; Masters in Chancery, Hon Brenton Haliburton, Hon James Stewart, Peleg Wiswell and J G Marshall, Esqrs; Registrar, H H Cogswell, Esq; Counsellors and Solicitors, the Attornies of the Supreme Court.

Courts of Error, and of Marriage and Divorce.

HIS MAJESTY'S COUNCIL; Advocates and Proctors, the Attornies of the Supreme Court.

Court of Vice Admiralty.

Judge, Hon S S Blowers; Advocates Gen Hon R J Uniacke; Solicitor Gen S G W Archibald, Esq L L D; Registrar, L Pennell, Esq; Dep Registrar, J S Tremain, Esq; Marshal, J Putnam, Esq; Dep Marshal, Stephen W Deblois, Esq; Advocates and Proctors, the Attornies of the Supreme Court; Messenger, Mr _____

Courts of Escheats and Forfeitures.

Commissioner, Hon Michael Wallace. Registrar, Sir Rupert D. George, Bart. Dep Registrar, Wm Hill, Esq.

Court for the Probate of Wills and granting Letters of Administration.

Surrogate General, Hon Charles Morris. Registrar, Alexander Primrose, Esq.

Supreme Court.

Chief Justice, Hon Sampson Salter Blowers. Puisne Judges, Hon Brenton Haliburton, Hon James Stewart and Lewis M Wilkins, Esq. Associate Judge, Peleg Wiswell, Esq. Attorney Gen. Hon R J Uniacke. Solicitor Gen S G W Archibald, Esq L L D. King's Counsel, Richard J Uniacke and William Fraser, Esqrs. Clerk of the Crown and Prothonotary throughout the Province, William Thompson, Esq. Deputy, J W Nutting, Esq.

Barristers and Attornies at Law of the Supreme Court residing in the Province.

HALIFAX—H H Cogswell, D S Clarke, S G W Archibald, R J Uniacke, jun. J W Nutting, Wm Hill, C R Fairbanks, J W Johnston, W Q Sawers, James Cochran, N W White, W B Ellis, Benjamin Murdoch, E Crawley, Alex Primrose, James S Tremain, Charles Twining, James B Uniacke, C D Archibald,

J I Sawyer, J F Gray, Wm Greaves, Wentworth Fleiger, James Stewart Clarke, Wm Young, Charles MacColla, and Thomas Forman, Esquires.

PICTOU.—N P Olding, Robert Hutton, Thomas Dickson, Jotham Blanchard, Henry Blackadar and R B Dickson, Esqrs.

TRURO.—Jonathan Marsters, James W Chandler and John D Archibald, Esqrs.

ANNAPOLIS.—T C Halliburton, H Goldsmith, Geo Grassie, Walter Bromley and James Dennison, Esqrs.

DIGBY.—G K Nichols, Esq.

AMHERST.—James S Morse, Alex Stewart, Charles D Roach, and James Stewart, Esqrs.

KENTVILLE.—John Whidden and John C Hall, Esqrs.

WINDSOR.—Wm Fraser, H A Emerson and L M Wilkins, Esquires.

NEWPORT.—D D Stewart, Esq.

ANTIGONISH.—John Thomas Hill, Esq.

SHELburne.—Colin Campbell, Esq.

YARMOUTH.—John Forman, Esq.

GUYSBOROUGH.—F W Des Barres and C W Weeks, Esqrs.

LIVERPOOL.—Wm Sternes and S P Fairbanks, Esqrs.

ARICHAT.—Wm C Delaney and Alex McDougall, Esqrs.

LUNENBURG.—John Creighton and G F Solomon, Esqrs.

The Nova-Scotia Barristers' Society.

Patrons, his Excellency the Chancellor, the Honorable the Chief Justice.

Honorary Members, the Judges of the Supreme Court—Treasurer, H H Cogswell, Esq—Secretary and Librarian, J W Nutting, Esq.

Committee for the year 1827—W B Bliss, E. Crawley, and B Murdoch, Esqrs.—Barristers.

Commissioners for taking Special Bail in the Country, on Actions depending in the Supreme Court.

Annapolis—Eben Cutler. Cumberland—Chas Baker, Thos Roach, Silas H Morse and D McFarlane, Esqrs. Cornwallis—S L Allison, Esq. Horton—S Dennison, Esq. Hants Co.—H Jenkins and Patrick Wright, Esqrs. Shelburne—Robert Bingay. Lunenburg—F J Rudolf, Esq. Queen's Co.—Jas Rogers, Esq. Pictou—Alex McDonald and W Taylor, Esqrs. Sydney—James Skinner and H Denoon, Esqrs. Colchester, J Fulton and George Dill, Esqrs.

Justices of the Peace throughout the Province.

Hon Sampson Salter Blowers, Right Rev John Lord Bishop of Nova-Scotia, Hon Michael Wallace, R J Uniacke, Charles

Morris,
Hibbert
and the

Hon F
bie, and
John Y

Samu

Presid
Vice
Direc
Lewis P
Pryor a
Solic
Engin

Of the
Free
va-S
long

John Al
Gran

No. 188.
the
No. 265.

No 1, ca
No 2, ca
No 7, ca
No 10, c
No 11, c
No 19, c
day
No 22, c
full
No 25,
2d
No 26,
Tu

Morris, James Stewart, T N Jeffery, Brenton Haliburton, Hibbert N Binney, Enos Collins, S B Robie, Chas R Prescott, and the Speaker of the House of Assembly.

Commissioners of the Revenue.

Hon R J Uniacke, Hon Michael Wallace, Hon Simon B Robie, and Wm Lawson, Esq. Mr. Wm. Newton, Clerk.

Commissioners for Light Houses.

Samuel Cunard, Es. and Captain Maynard, R. N

SHUBENACADIE CANAL COMPANY.

President, Hon Michael Wallace.

Vice Presidents, Hon T N Jeffery and Samuel Cunard, Esq.

Directors, Joseph Allison, Thomas Boggs, James Tobin, Lewis Piers, S W Deblois, John Clark, John A Barry, William Pryor and John Starr, Esquires.

Solicitor and Secretary, C R Fairbanks, Esq.

Engineer, Francis Hall, Esq.

PROVINCIAL GRAND LODGE

Of the Most Ancient and Honorable Fraternity of Free and Accepted Masons in the Province of Nova-Scotia, and Masonic Jurisdiction thereunto belonging.

John Albro, Esq. Grand Master ; Mr. Edmund Ward, Deputy Grand Master ; Adolphus Vieth, Esq. Grand Secretary.

LODGES ON THE REGISTRY OF ENGLAND.

No. 188, called St Andrew, held at Halifax, first Tuesday in the month.

No. 265, called St John, held at Halifax, first Monday in ditto.

ON THE REGISTRY OF NOVA-SCOTIA.

No 1, called Union, held at Halifax, 2d Monday in the month.

No 2, called Virgin, held at Halifax, 4th Monday do.

No 7, called Temple, held at Guysborough, 1st Tuesday do.

No 10, called Hiram, held at Shelburne, 2d Monday do.

No 11, called St. George, held at Cornwallis 1st Monday do.

No 19, called St. George, held at Mungerville, N. B. 2d Tuesday do.

No 22, called Solomon, at Fredericton, N. B. 1st Tuesday after full moon.

No 25, called Annapolis Royal, held at Annapolis Royal the 2d Tuesday in the month.

No 26, called St John, held at Charlotte Town, P E Island, 2d Tuesday do.

- No 28, called Harmony, held at Sydney, C.B. 1st Wednesday do.
 No 29, called St. John, held at St. John, N. B. 1st Tuesday do.
 No 11, called Midian, held at Kingston, N. B. 2d do do.
 No 34, called Orphan's Friend, held at St. Stephens, N. B. 2d
 Wednesday after every full moon.
 No 35, called New Caledonia, held at Pictou, 2d Tuesday in
 the month.
 No 36, called Newport, held at Newport, 1st Tuesday after
 every full moon.
 No 37 called Eastern Star, held at St. Andrews, N. B. every
 Wednesday before full moon.
 No 38, called Union, held at St. John, N. B. every Tuesday in
 the month.
 No 39, called Royal Standard, held at Halifax 2d Tuesday do.
 No 40, called Musquodoboit, held at Musquodoboit, every Tues-
 day before the full moon.
 No 41, called Regent, held at Dorchester, first Monday in the
 month.
 No 42, called Fortitude, held at Miramichi, N. B. 1st Tuesday do
 No 43, called St. Lawrence, held at Carleton, N. B. 1st do. do.
 No 45, called Fort Edward, held at Windsor, 2d Monday do.
 No 46, called Morning Star, held at Woodstock, N. B. Tuesday
 before full moon.
 No 47, called Moira, held at Rawdon, Monday before do.
 No 48, called Colchester Union, held at Truro, 1st Tuesday in
 the month.
 No 40, called Concord, held at Barrington 1st Monday do.
 No 50, called Golden Rule, held at Hopewell, N. B. 1st Wed-
 nesday after full moon.
 No 51, called Cumberland Harmony, held at Amherst, 1st Thurs-
 day in the month.
 No 52, called Albion, at St. John, N. B. 1st Monday ditto.
 No 53, called Royal Albion, Travelling Warrant Rifle Brigade,
 3d Tuesday in the month.
 No 54, called Oxfordshire Light Infantry, Travelling Warrant
 52d Regt. 1st Thursday in the month.

King's College Windsor.

Patron, his Grace the Lord Archbishop of Canterbury.

Governors, his Excellency the Lieutenant Governor, the
 Right Revd the Lord Bishop of Nova-Scotia, the Hon the
 Chief Justice, the Judge of the Court of Vice Admiralty, the
 Speaker of the House of Assembly, the Attorney General, the
 Solicitor General, the Secretary of the Province, the Revd the
 President, the Revd the Vice President.

Visitor, the Lord Bishop of Nova Scotia.

President, Rev Charles Porter, D. D., Vice President, Rev
 Wm Cochran, D. D. Professor of Divinity and Hebrew, Rev

Chas Porter
 Metaphys
 and Natur
 Grammar,
 and Tutor
 Jas Coch
 ernors of
 Assistant,

Patron,
 George E
 K C B. H
 S S Blow
 the Presid

Govern
 Presbyter
 land. Tr
 Esq L L D
 Davison, C
 Gregor, D
 M'Colloch

Clergy

The Ho
 Scotia, Ne
 Willis, D
 tor of St H
 to the Ger
 Chaplain
 Lord Bish
 W C King
 Rev Robt
 Rev E Gil
 Arnold.
 Yarmouth
 Lunenbur
 Chester,
 Newport,
 ris. Prin
 Travelling
 ville, Dar

Rev Joh
 ters. Ro

Chas Porter, DD. Acting Professor of the moral Sciences and Metaphysics, Rev W Cochran, D D. Professor of Mathematics and Natural Philosophy, Pierce Morton, Esq. A M. Professor of Grammar, Rhetoric and Logic, Rev W Cochran, D D. Chaplain and Tutor, Rev W B King, A M. Secretary and Treasurer, Jas Cochran, Esq. Academy under the direction of the Governors of King's College. Principal, Revd Francis Salt, A M. Assistant, Mr. John S Clarke, A B.

Dalhousie College, Halifax.

Patron, his Majesty the King. Governors, the Right Hon George Earl of Dalhousie, his Excellency Sir James Kempt, K C B. Hon and Rev John Lord Bishop of Nova Scotia, Hon S S Blowers, Hon Michael Wallace, Hon Simon B Robie and the President.

Pictou Academy.

Governed by twelve Trustees who are to profess either the Presbyterian system of Religion, or that of the Church of England. Trustees, Hon S B Robie, L L D, S G W Archibald, Esq L L D, Rev Thomas McCulloch, D D, Duncan Ross, Thos Davison, George Smith, R Lowden, Wm Patrick, James MacGregor, D D, and James Robson. Head master, Rev Thomas McCulloch, D D. Assistant, Rev Mr McKinley.

Clergy of the Established Church in Nova Scotia.

The Hon and Right Rev John, D D. Lord Bishop of Nova-Scotia, New Brunswick and their Dependencies. Rev Robert Willis, D D. Archdeacon, Ecclesiastical Commissary, and Rector of St Paul's, Halifax. Rev Fitzgerald Uniacke, Missionary to the Germans, Halifax. Rev J T Twining, B D. Garrison Chaplain. Rev Edward Wix, missionary and chaplain to the Lord Bishop. Newport, Rev C Porter, D D. Windsor, Rev W C King. Falmouth, Rev Wm Cochran, D D. Cornwallis, Rev Robt Norris. Horton, Rev Joseph Wright. Aylesford, Rev E Gilpin. Wilmot, Rev A Gilpin. Granville, Rev H N Arnold. Annapolis, Rev J Milledge. Digby, Rev R Veits. Yarmouth, Rev T A Grantham. Shelburne, Rev T Rowland. Lunenburg, Rev J C Cochran. Manchester, Rev Chas Weeks. Chester, Rev James Shreve. Sydney, Rev Chas Ingles. — Newport, Rev Henry Hayden. Parrsborough, Rev Geo Morris. Principal of the Academy at Windsor, Rev Francis Salt. Travelling Missionary (Truro) Rev John Burnyeate. Sackville, Dartmouth and Cumberland, vacant.

Presbytery of Prince Edward Island.

Rev John Keir, Prince Town. Rev Robert Douglas, St Peters. Rev Wm McGregor, Richmond Bay.
D.

Stations of the Wesleyan Missionaries.

NOVA-SCOTIA, (Halifax)—Rev Stephen Bamford, Chairman; Rev W Black, supernumerary; Mr Hennegar, a probationer. Liverpool, Rev Robert L Lusher. Annapolis, Rev Sampson Busby, Mr Murray, a probationer. Horton and Cornwallis, Rev John B Strong. Newport, Rev M Richey, Rev W Bennett, supernumerary. Windsor, Rev Robt Young. Parrsborough, Rev John Snowball. Wallace and Waterford, Rev Robert H Crane. Shelburne and Barrington, Rev Geo Miller. Lunenburg, Rev George Orth. River John, Mr Harrison, a probationer.

NEW-BRUNSWICK, (St John)—Rev R Williams, Chairman. Westmoreland, Rev W Temple, secretary of the Nova Scotia District. Fredericton, Rev George Jackson, secretary of the New Brunswick District. Sheffield, Rev Albert Desbrisay. St Stephens, Rev D McColl.

PRINCE EDWARD ISLAND, (Charlotte Town)—Rev Henry Pope. Tryon and Bedeque, Rev John Marshall. Murray Harbour, Mr T Davies, a probationer.

Baptist Ministers.

John Burton, David Harris, Thomas Ashley, Edward Manning, Geo Dimock, James Munro, Samuel McCulley, Thomas H Chipman, Joseph Dimock, Robt Harris, Peter Crandall, Chas Tupper, David Nutter, Wm Elder, George Richardson, Joseph Henderson, John Craig, Enoch Towner, Harris Harding, Theodore Seth Harding.

NEW-BRUNSWICK.

Lieut. Governor, Maj. Gen. Sir Howard Douglas, Bart.
K. C. S. C. B. F. R. S. &c. &c.

His Majesty's Council—The Chief Justice, George Leonard, Christopher Billop, John Coffin, John M Bliss, John Robinson, William Black, Samuel D Street, George Shore, William Botsford and Ward Chipman.

Sec'y. Reg. and Clerk of the Council, Wm F Odell, Esq.—Chief Justice, Hon John Saunders. Judges, Hon John M Bliss, Wm Botsford and Ward Chipman. Attorney Gen. Thomas Wetmore, Esq. Solicitor Gen. Chas Peters, Esq. Clerk, Hon George Shore. Com. of Crown Lands and Surveyor General, Thos Baillie, Esq. Collector, H Wright, Esq. Comptroller, Robt Parker, Esq.

Island of Prince Edward.

Lieutenant Governor, Colonel John Ready. Chief Justice and President of the Council, Hon S G W Archibald, Esq. L

L. D. Pu
Sec'y. R.
C J Brisco
art, Esq.

Lieut. G
sentia, Li
Lieut Gen
Puisne Ju
al Sec'y.
Comptroll

Govern
cil, Willie
Kennedy,
Jas C Est
torney Ge
Esq. Co
Heselline

MEMOR
&c. will b
which the

Town a
County, J

Suprem
ary, 1st T

Inferior
tember, a
man, John

Commis
Commissi
main, Wm
D S Clark

Police
days exce
Howe, ser

Session
tember an

aries.
ford, Chairman;
a probationer.
Rev Sampson
Cornwallis,
y, Rev W Ben-
ung. Parrsbo-
Waterford, Rev
Rev Geo Miller.
Mr Harrison, a
ams, Chairman.
the Nova Scotia
secretary of the
bert Desbrisay.

n)—Rev Henry
shall. Murray

y, Edward Man-
Culley, Thomas
er Crandall, Chas
harrison, Joseph
Harding, The-

Douglas, Bart.
&c.

e, George Leon-
Bliss, John Robin-
e Shore, William

F Odell, Esq.—
Hon John M Bliss,
y Gen. Thom's
Esq. Clerk, Hon
urveyor General,
q. Comptroller,

Chief Justice
Archibald, Esq. L

L D. Puisne Judges, Hon Robt Gray, Hon H T Haviland.—
Sec'y. Reg. and Clerk of the Council, J E Carmichael, Esq.
C J Briscoe, Receiver Gen. Quit Rents. Collector, John Stew-
art, Esq. Comptroller, James L Des Barres, Esq.

Newfoundland.

Lieut. Governor Sir Thomas J Cochran. Lieut. Gov. of Pla-
centia, Lieut Col. George J Reeves. Lieut Gov. of St. John's,
Lieut Gen. Wm Knollys. Chief Justice, Rich A Tucker, Esq
Puisne Judges, A W Des Barres, and J Molloy, Esq. Colonial
Sec'y. E B Brenton, Esq. Collector, A H Brooking, Esq.
Comptroller, George Baillie, Esq.

Bermuda.

Governor, Lt. Gen. Sir T. H. Turner. President of Coun-
cil, William Smith, Esq. Sec'y and Provost Marshal, Robert
Kennedy, Esq. Treasurer, Wm Smith, Esq. Chief Justice,
Jas C Eston, Esq. King's Advocate, Dun. Stewart, Esq. At-
torney Gen. Solicitor Gen. and Advocate Gen. James Holland,
Esq. Collector, Gilbert Salton, Esq. Comptroller, Charles
Heselline, Esq. Surveyor, John H Tucker, Esq.

MEMORANDUM.—The Sittings of Courts, Names of Officers,
&c. will be found arranged under the respective Counties to
which they belong.

County of Halifax.

Town and District of Halifax Proper—High Sheriff of the
County, John James Sawyer, Esq.

Supreme Court—Sits at Halifax on the 3d Tuesday of Janu-
ary, 1st Tuesday of April, and 2d Tuesday of October.

Inferior Court—Sits on the 2d Tuesday of March, June, Sep-
tember, and December—Judges, Hon M Wallace, James For-
man, John Howe, and Wm Lawson, Esqrs.

Commissioners' Court—Sits the first Monday of every month.
Commissioners—James Foreman, James Tobin, Richard Tre-
main, Wm Minns, and John Liddell, Esqrs. Clerk of the Peace,
D S Clarke, Esq.

Police Office.—Open every day throughout the year, Holi-
days excepted. Justices, John G Pyke, John Liddell, and Jno
Howe, sen. Esqrs. D S Clarke, Esq. Clerk.

Sessions of the Peace—Sits on the 1st Tuesday of June, Sep-
tember and December.

**Justices of the Peace of and for the County, residing
in the District of Halifax.**

John G Pyke, Custos Rotulorum, Jas Creighton, Jas Forman,
John Howe, sen. Rufus Fairbanks, Samuel Head, John Liddell,
Richard Tremain, Henry Yeomans, Peter M'Nab, Wm Law-
son, Samuel Albro, Samuel Cunard, John Starr, John Albro,
Michael Tobin, M Richardson, John D Hawthorn, Thos Hol-
land, Isaac Rayne, H Y Mott, John T Walford, James Money,
and John Allan, Esqrs. D S Clarke, Esq. C. P.

Commissioners for visiting the Poor House.

Hon R J Uniacke, Hon Charles Morris, Hon Thos N Jeffery,
John Stayner, John Lawson, R Tremain, J G Pyke, Henry
Yeomans, John Clark, Michael Tobin, G N Russell, and Jas
Forman, Esqrs.

Commissioners of the Streets, &c.

James Forman, John Albro, Michael Tobin, Frederick Major,
and Samuel Cunard, Esqrs.

Registrar of Deeds, &c. Sir R. D. George, Bt.

Officers of the Provincial Revenue.

Hon H N Binney, Collector of Impost and Excise. Andrew
Richardson, Esq. gauger and weigher. Mr John Rule, ship-
ping officer. Mr Robert Hodges, land waiter. Mr Charles
Ross and James Barret, waiters. Mr Wm Cleaveland, collec-
tor of license duty. Mr Edw Duckett, collector of light duty.

Officers of His Majesty's Customs.

Hon Thos N Jeffery, Collector. John Wallace, Esq. Comp-
troller. James Purvis and D H Watson, Esqrs, waiters and
searchers. Mr Edw Duckett, surveying officer of shipping.
A E Coren and F W Acheson, tide surveyors. R B Young,
Errol Boyd, Alex Hays and Terence Connell, tidesmen. Jas
Wall and W Hays, boatmen.

WAREHOUSE—Frederick Saunders, Esq. Keeper. R Dim-
mett, Locker.

Fire Wardens of the Town of Halifax.

Richard Tremain, Esq. Chairman. John Albro, Esq. Sec'y
& Treasurer. Edw Pryor, James Tremain, C R Fairbanks,
Esqrs.—south suburbs. John Dempster, L Hartshorne, Esq.—
St Matthew's ward. G N Russell, Wm A Black, Esqrs.—St
Paul's ward. Wm Minns, Thos Boggs, Esqrs.—County Court
House ward. John Liddell, John Clark, Jos Allison, Esqrs.—

St John's
rack ward
Samuel C

COMM
direct at
John Star
and John

Fire

First D
Bennett,
ter, Wm
nan, Wm
Timothy

Second
James C
J Drillio,
Winton,

Third
Henry S
Haversto

Fourth
bott, sec'
Robt W

Wm F
Geo Jost,
Thos Mc
Johnson,
McNutt,
phen Hu
Axe Fire
serving a

F
Sun, H

A F J
ter atten
Mr J H

DEPU
fax. C

nty, residing

on, Jas Forman,
d, John Liddell,
ab, Wm Law-
r, John Albro,
orn, Thos Hol-
James Money;

r House.

Thos N Jeffery,
G Pyke, Henry
assell, and Jas

&c.
Frederick Major,

George, Bt.

nue.

excise. Andrew
ohn Rule, ship-
Mr Charles
aveland, collec-
or of light duty.

ms.
ace, Esq. Comp-
rs. waiters and
er of shipping.
R B Young,
tidesmen. Jas

eeper. R Dim-

Halifax.

bro, Esq. Sec'y
C R Fairbanks,
tshorne, Esq.—
ck, Esqrs.—St.
—County Court
llison, Esqrs.—

St John's ward. M Tobin, S W Deblois, Esqrs.—North Bar-
rack ward. Hon E Collins, John Starr, James N Shannon,
Samuel Cunard, Esqrs.—north suburbs.

COMMITTEE—of the Fire Wardens appointed to manage and
direct at Fires.—Richard Tremain, Thos Boggs, John Albro,
John Starr, Edw Pryor and John Clark, Esqrs.—Edw Pryor
and John Clark, Esqrs. to superintend and direct the Axe-men.

Fire Engine Company for the Town of Halifax.

James Dechman, Captain.

First Division—David Hutton, Lieutenant; Henry Hill, Jos
Bennett, John Farquhar, Thos Mackie, J Carter, Thos Palis-
ter, Wm J Rogers, Wm Kerr, Wm Calwell, Donald McLen-
nan, Wm Barnett, Wm Murray, Alex Malcolm, John Mitchell,
Timothy Connors, Geo Barns, Jas Wilkie, Jas Mahony.

Second Division—James Smith, Lieutenant; Joel Martin,
James Carmichael, Edw Sturmy, Thos Cassidy, James Irwin,
J Drillio, Andrew Crawford, G S Wilson, D McLean, John
Winton, Thos Wilson, Saml Nelson, Chas Hunter.

Third Division—James Murphy, Lieutenant; Robt Penny,
Henry Spike, James Bricken, John Benzie, John Wilson, R
Haverstock, James Thompson.

Fourth Division—Michael Byron, Lieutenant; Elias Cab-
bott, sec'y.; Geo Little, John West, Robt Norris, Alex Boyle,
Robt Woodhill, P Sparling.

Axe Fire-men for the Town of Halifax.

Wm Fennerty, Captain; Michael Greamer, Lieutenant;
Geo Jost, Peter Hall, J M'Neil, Robt Richardson, Errol Boyd,
Thos McKie, John McKenzie, Wm Marvin, James Grant, Wm
Johnson, Wm Strickland, Henry Miller, George Booth, James
McNutt, Wm Rose, Wm Grant, M Lownds, David Crowl, Ste-
phen Hull, Patrick Mahony. The Fire Engine Company and
Axe Fire-men are exempted from militia duty, and also from
serving as jurors.

Fire Companies in the Town of Halifax.

Sun, Heart and Hand, Hand and Hand, Phoenix, and Fox.

Officers of His Majesty's Naval Yard.

A F Jones, Esq. master shipwright, John Douglas, Esq. mas-
ter attendant; Mr James Ritchie, master shipwright's clerk;
Mr J H McEwen, clerk; Mr James Matthews, gate porter.

DEPUTY POST MASTER GENERAL—John Howe, Esq. Hali-
fax. **CORONER**—J F Gray, Esq.

NATIONAL SCHOOL—Abel S Gore, Esq. Master. **ACADIAN SCHOOL**—T. O'Brien, Esq.

MAIL DAYS.—The Eastern and St John, N. B. mails arrive in Halifax on Saturday at 3 o'clock, P. M. and leaves ditto on Wednesday at 1 o'clock, P. M. The Western ditto arrives on Thursday at 2 o'clock, P. M. and leaves ditto on Monday at 2 o'clock, P. M.

—X—

EASTERN DIVISION

Includes the Counties of Cumberland and Sydney, and Districts of Colchester and Pictou. Chief Justice of the Inferior Courts of Common Pleas and President of the Courts of Session in this Division—Jared I. Chipman, Esq.

COUNTY OF HALIFAX.

Districts of Colchester and Pictou.

Supreme Court sits at Pictou on the last Tuesday of June and 4th Tuesday of September. At Truro on the 1st Tuesday of June and 4th Tuesday of Sept.

Inferior Court sits at Pictou 2d Tuesday of July, and 3d Tuesday of January—Assistant Judges, Hugh Denoon, A M'Donald, George Smith, Robt Lowden, and Andrew M'Carra, Esqrs. ; Mr Walter Patterson, dep. prothonotary. At Truro on the 2d Tuesday of July and the 3d Tuesday of January—Assistant Judges, John Fulton, James Fulton, James Archibald and Thos J. Brown, Esqrs ; George Dill, Esq. dep. prothy. Dis. Colchester, James Skinner, Esq. ditto. Pictou.

Sessions of the Peace sits at Truro and Pictou at the same time with the Inferior Court.

Justices of the Peace—of and for the county residing in the districts of Colchester and Pictou, Jas Fulton, Hugh Denoon, John Stewart, Jas Archibald, Robt Lowden, Saml Tupper, W Cotting, Joshua Marsh, John Dickson, Wm M'Kay, Geo Roy, Matthew Archibald, Went Taylor, John Allen, James Skinner, Robt Dickson, Jas M'Curdy, James Kent, Geo. Smith, James Benvie, Adam Archibald, John Fraser, Nathl Marsters, Thos J Brown, James Flemming, J Mahon, W Currie, Wm Mattheson, D M'Lean, R M'Kay, Andrew M'Carra, W Field, E S Blanchard, Jas Carmichael, John Olding, Wm Mortimer, Silas H Crane, John Finlayson, Geo McLeod, Alex Campbell, and Joseph Fulton, Esqrs.

Surr
trict of
Smith,

Regi
Dis. of

Dist
Collect
H Den

Dep
Pictou

Com
Robt L
Colche
Edw B

Post
Esq. T

Hig
puty id

Sup
Tuesd

Infer
per Di
1st Tu
John C

Just
Alex M
N Her

Con
Cunni
tary, A

Sur
McDo
Regis
G Pea

Infe
Lowe
March
Cutle
Taylo

ter. ACADIAN

B. mails arrive
leaves ditto on
ditto arrives on
Monday at 2

dney, and Dis-
of the Inferior
courts of Session

nesday of June
the 1st Tuesday

July, and 3d
Denoon, A M'
Andrew M'Cara,
y. At Truro
y of January —
James Archi-
sq. dep. prothy.
ou.

ou at the same

residing in the
Hugh Denoon,
ml Tupper, W
Kay, Geo Roy,
James Skin-
nt, Geo. Smith,
Nathl. Marsters,
Currie, Wm
arra, W Field,
Vm Mortimer,
Alex Campbell,

Surrogate Judges of the Court for the Probate of Wills.—Dis-
trict of Colchester, S G W Archibald. District of Pictou, Geo
Smith, Esq.

Registrars of Deeds.—Dis. of Colchester, Israel Allisen, Esq.
Dis. of Pictou, Geo Smith, Esq.

District of Pictou.—Collector of Light Duties, R Corbett.
Collector of Impost and Excise and Pro Collector of Customs,
H Denoon, Esq. Ditto for Dis. Colchester, Robt Dickson, Esq

Deputy Sheriffs.—Dis. Colchester, Israel Allison, Esq. Dis.
Pictou, J W Harris, Esq.

Commissioners of Land Board.—Dis. Pictou, George Smith,
Robt Lowden, John Skinner and Robt Patterson, Esqrs. Dis.
Colchester, Robt Dickson, Jas Flemming, Saml Tupper and
Edw Blanchard, Esqrs.

Postmasters.—Alex. P. Ross, Esq. Pictou. Israel Allison,
Esq. Truro. Saml Moore, Esq. Gay's River.

COUNTY OF SYDNEY.

High Sheriff for the County, Kenneth McDonald, Esq. De-
puty for the Lower District, Mr. Wm. O Heffernan.

Supreme Court is held at Dorchester, Antigonish, on the 2d
Tuesday of September—dep. prothy, Alex M'Donald, M D.

Inferior Court and General Sessions of the Peace for the Up-
per District sits at Dorchester on the 2d Tuesday of March and
1st Tuesday of November. Assistant Judges, J W Hierlihy,
John Cunningham and Benj. Ogden, Esqrs.

Justices of the Peace.—J W Hierlihy, John Cunningham,
Alex McDonald, M D. John McDonald, Robt Murray and R
N Henry, Esqrs. Clerk of the Peace, Mr John Monro.

Commissioners of Land Board.—Rev Thomas Trotter, John
Cunningham, John M'Donald, and R N Henry, Esqrs. Secretary,
A McDougall, Esq. Dep. Surveyor, Mr A D Harrington.

Surrogate Judge of the Court for the Probate of Wills.—Alex
McDonald, M D. Registrar, Kenneth McDonald, Esq. Dep.
Registrar of Deeds, John Cunningham, Esq. Coroner, Mr J
G Peabody, Dep. Postmaster, R N Henry, Esq.

Inferior Court and General Sessions of the Peace—for the
Lower District—sits at Guysborough on the 4th Tuesday of
March and 3d Tuesday of November. Assistant Judges, Thos
Cutler and Jos. Marshall, Esqrs. Dep. Prothonotary, Went.
Taylor, Esq.

Justices of the Peace.—Thos Cutler, Jos Marshall, Wm Atwater, Christian Miller, Robt M Cutler, Went. Taylor, Patrick Lannigan, C Archibald, Wm M'Keen, T Glencross, D Campbell, H McDonald, R Hartshorne, John Newton, Jos Maxwell, Edw Langley, and John Whitman, Esqrs. Mr W O Hefferman, C P.

Commissioners of Land Board.—Robt M Cutler, Jos Marshall, R Hartshorne and J Newton, Esqrs. Sec'y, J Newton, Esq. Dep. Surveyor, W Taylor, Esq. Surrogate Judge of the Court for the Probate of Wills, &c. Thos Cutler, Esq.—Registrar, Robt M Cutler, Esq. Dep. Registrar of Deeds, Thos Cutler, Esq. Postmaster, Robt M Cutler, Esq. Coroner, Mr P Host. Pro Collector of Customs and Collector of Impost and Excise, Duncan McColl, Esq.

COUNTY OF CUMBERLAND.

High Sheriff for the County, Joshua Chandler, Esq.

Supreme Court sits at River Philip on the 2d Tuesday of June.

Inferior Court sits at Amherst on the 1st Tuesday of January and last Tuesday of June. Assistant Judges, Chas Baker, H Purdy and Thos Roach, Esqrs. S Morse, Esq. dep. proth'y.

Sessions of the Peace sits at Amherst the same time with the Inferior Court.

Justices of the Peace.—Chas Baker, Esq. Custos Rotulorum, H Purdy, G Purdy, Edw Baker, Thos Roach, C H Chandler, D McFarlane, Wm Baker, John Black, Wm White, Gains Lewis, John Morse, George Bergman, James M'Nab, Thomas Cooke, Stephen Oxley, R M'Gowan Dickey, Esqrs. Jas S Morse, Esq C P. Surrogate Judge of the Court for the Probate of Wills and Registrar of Deeds, Chas Baker, Esq. Collector of Impost and Excise, Thomas Chapman. Pro Collector of Customs, Michael Gordon.

Commissioners of Land Board.—Alex Stewart, Thos Roach, J S Morse and Danl McFarlane, Esqrs. Coroner, John Morse, Esq. Dep. Postmasters, Thomas Roach, Esq. Fort Lawrence, W White, Esq. Amherst. Geo Bergman, Esq. Waterford.

MIDDLE DIVISION

Includes the counties of Hants, King's, Queen's and Lunenburg. Chief Justice of the Inferior Courts of Common Pleas

and Pre
O Halib

High

Supre
and the

Inferi
ry and
ningham
Jenkins

Sessi
Inferior

Justi
Rich C
J Walk
A Scot
McKay
Smith,

Com
Sentall
Judge
Dep. R
and Ex
Wright
Postma

High

Supr
and the

Infer
2d Tue
wolf, V
proth'y

Sess
rior Co

Justi
Elisha

and President of the Courts of Session in this division, Wm O Haliburton, Esq.

COUNTY OF HANTS.

High Sheriff for the County, Terence Cochran, Esq.

Supreme Court sits at Windsor on the last Tuesday of May and the 4th Tuesday of September.

Inferior Court sits at Windsor on the last Tuesday of January and the 1st Tuesday of July. Assistant Judges, R Cunningham, Esq. Rev W Cochran, D D. Dep. proth'y, Hugh Jenkins, Esq.

Sessions of the Peace are held at the same time with the Inferior Court.

Justices of the Peace.—John Emerson, Custos Rotulorum, Rich Cunningham, Wm Smith, Shubael Dimock, W Salter, J Walker, Caleb Smith, W H Shey, Jas Whidden, Jno Smith, A Scott, John Parker, Benj Dewolf, W O'Brien, J Withrow, J McKay, J Allison, J Garby, J Dimock, J Elder, D Wier, Rich Smith, Thos King, Benj Casey and Jos Sentell, Esqrs.

Commissioners of Land Board.—W H O Haliburton, Jos Sentell, B Dewolf, W H Shey, and R Smith, Esqrs. Surrogate Judge of the Court for the Probate of Wills, Wm Fraser, Esq. Dep. Reg. of Deeds, W Bowes, Esq. Collector of Imposts and Excise, W Bowes, Esq. Pro Collector of Customs, Pat. Wright, Esq. Ditto for Douglas, R Dickson, Esq. Deputy Postmaster, W Bowes, Windsor.

COUNTY OF KINGS.

High Sheriff for the County, Geo Chipman, Esq.

Supreme Court is held at Horton on the 1st Tuesday of June and the 3d Tuesday of Sept.

Inferior Court sits at Horton on the 1st Tuesday of May and 2d Tuesday of Oct. Assistant Judges, John Chipman, E Dewolf, Wm Campbell, and Hon C R Prescott, Esqrs. Deputy proth'y, S L Allison, Esq.

Sessions of the Peace held at the same time with the Inferior Court.

Justices of the Peace.—John Chipman, Custos Rotulorum, Elisha Dewolf, Wm Campbell, Jas Kerr, Wm A Chipman, J

Ratchford, Danl Dewolf, Jas Harris, Saml Bishop, John Wells, Alex Walker, S Dennison, H V Buskirk, Jas Allison, Daniel Lockhart, Fullerton J Lewis, J D Harris, W Chipman, jr. H Harrington, and Jos Maynard, Esqrs. Wm Chipman, C P.

Commissioners of Land Board.—H V Buskirk, Geo Chipman, and John Johnson, Esqrs. Coroner, W C More, D Dewolf, and Jas Allison, Esqrs. Surrogate Judge of the Court for the Probate of Wills, Wm Campbell, Esq. Dep. Reg. of Deeds, &c. Horton, Aylesford and Cornwallis, Wm Campbell, Esq. Parrsborough, James Ratchford, Esq. Collector of Impost and Excise, D Whidden, Esq. Pro Col. of Customs, D Whidden, Esq. Postmasters, Elisha Dewolf, Esq. Horton—Jas Ratchford, Esq. Parrsborough.

COUNTY OF QUEENS.

High Sheriff for the County, Nathan Tupper, Esq.

Supreme Court is held at Liverpool on the 1st Tuesday of July.

Inferior Court sits at Liverpool on the 4th Tuesday of April and 4th Tuesday of Oct. Assistant Judges, Joshua Newton, Joseph Freeman, Snow Parker, Benj Knaut and Jas Dewolf, Esqrs. Dep. proth'y, Jas Rogers, Esq.

Sessions of the Peacs held at the same time with the Inferior Court.

Justices of the Peace.—Joshua Newton, Custos Rotclorum, Jas Barss, N Tupper, Isaac Dexter, Jos Freeman, Snow Parker, Benj Knaut, Robt Barry, James Gorham, J R Dewolf, Jno Barss, and Jas Dewolf, Esqrs.

Commissioners of Land Board.—Jos Freeman, Benj Knaut, N Tupper and Jas Gorham, Esqrs. Surrogate Judge, &c. Joshua Newton, Esq. Col. of Impost and Excise, J Newton, Esq.—Pro Col. of Customs, J Newton, Esq. Coroner, Jacob Whitman, Esq. Postmaster, Benj Knaut, Esq.

COUNTY OF LUNENBURG.

High Sheriff for the County, Hen. Kaulback, Esq.

Supreme Court is held at Lunenburg on the last Tuesday of June.

Inferior Court sits at Lunenburg on the 2d Tuesday of April and 2d Tuesday of October. Assistant Judges, J Pernette, G Miller and Edward James, Esqrs. Dep. proth'y, Charles Owen, Esq.

Sessior Co

Justice
Etter,
Rudolf,
man,
Bent, E

Comm
dle, G
&c. J P
Esq. C
ventive
master

Inclu
Justice
of the C

High

Supr
and the

Infe
and the
day of
ton, A
E Cutl

Sess
Court.

Just
Jones,
Benj I
man, J
Segoy
well, J
Chas
cy, So
thy R
Neily

Sessions of the Peace held at the same time with the Inferior Court.

Justices of the Peace.—Edw James, Custos Rotulorum, F G Etter, John Pernette, D W Crandle, James Walker, J C Rudolf, John Evans, G Miller, Wm Alexander, John Heckman, Thomas Godfrey, G S Wells, John Hunt and W Bent, Esqrs. F C Rudolf, C P.

Commissioners of Land Board.—John Pernette, D W Crandle, G Miller and John Heckman, Esqrs. Surrogate Judge, &c. J Pernette, Esq. Dep. Reg. of Deeds, &c. Philip Rudolf, Esq. Col. of Impost and Excise, Thos Godfrey, Esq. Preventive Officer, A S Bruce, Esq. Coroner, J C Rudolf. Postmaster, J C Rudolf, Esq. Lunenburg.

WESTERN DIVISION

Includes the Counties of Annapolis and Shelburne. Chief Justice of the Inferior Courts of Common Pleas and President of the Courts of Session in this division, Thomas Ritchie, Esq.

COUNTY OF ANNAPOLIS.

High Sheriff for the County, Edw H Cutler, Esq.

Supreme Court sits at Annapolis on the 2d Tuesday of June and the 2d Tuesday of Sept.

Inferior Court sits at Annapolis on the 3d Tuesday of April and the 1st Tuesday of Nov. ; and at Digby on the 1st Tuesday of July and 3d Tuesday of Dec. Assistant Judges, E Morton, And. Snodgrass, C U Jones and Wm F Bonnell, Esqrs. E Cutler, Esq dep. proth'y.

Sessions of the Peace at the same time with the Inferior Court.

Justices of the Peace.—Edw Thorn, Custos Rotulorum, Simon Jones, Stephen Jones, Moses Shaw, R T Randolph, P Lovett, sen Benj Dodge, John Ruggles, E Morton, S V Bayard, John Whitman, P Lovett, jr. John Morehouse, Rubin Hankinson, John M Segoyne, W Jones, Thos Ritchie, Joseph Queruay, John Wiswell, jr. Elias Wheelock, W F Bonnell, C Jones, John Reed, Chas Jones, J F Randolph, W Bent, Pardon Sankes, Wm Delancy, Sam Campbell, W Roach, Saml Chesley, Saml Hall, Timothy Ruggles, jr. John Ditmars, James Robertson and Robert Neily, Esqrs. Ebenezer Cutler, C P. Surrogate Judge, &c.

T C Halliburton, Esq. Dep. Reg's. of Deeds, for the Eastern District, Wm Winniett, Esq.—for the Western do. S Jones, Esq. Coroners, Silvanus Snow, Wm Young, and Jas R Lovett, Esqrs.; at the Gut, Mr David Hall. Col. of Light Duty, of Impost and Excise and Pro Col. of Customs, H Goldsmith, Esq.

Commissioners of Land Board.—Eastern District, Thomas Ritchie, Henry Goldsmith and J Ditmas, Esqrs.—Western do. Cereno U Jones, Chas M, Carthy and Saml Campbell, Esqrs.—Dep. Postmasters, H Goldsmith, Esq. Annapolis. W F Bonnell, Esq Digby.

COUNTY OF SHELBURNE.

High Sheriff for the County, John Bingay, Esq.

Supreme Court is held at Shelburne on the 2d Tuesday of July.

Inferior Court, for the district of Yarmouth and Argyle, sits at Tuskett Village on the 1st Tuesday of May, and at Yarmouth on the 4th Tuesday of Sept. Assistant Judges, S S Poole, J Lent, J N Bond, B D'Entremont and H G Farish, Esqrs. M Huntington, Esq. dep. proth'y. For the district of Shelburne, sits at Shelburne on the 2d Tuesday of May and the 2d Tuesday of Sept. Ass't Judges, G White, W B Sargent, J V Buskirk and T Crowell, Esqrs. Robt Bingay, Esq. dep. Proth'y.

Sessions of the Peace held at the same time with the Inferior Court.

Justices of the Peace.—Gideon White, Custos Rotulorum, S S Poole, B Bernard, B D'Entremont, J V Buskirk, Jas Dore, J N Bond, James Lent, Eben Crowell, H G Farish, Thos Crowell, John Bingay, Gabriel V Norden, Anthony Landers, J Kelly, B Bingay, M Huntintgon, J McKinnon, Colin Campbell, J Barclay, and Robt Currie, Esqrs. Robt Bingay, Esq C P.

Commissioners of Land Board.—Eastern District, Colin Campbell, J V Buskirk, John Bingay and W B Sargent, Esqrs. Western District, S S Poole, H G Farish, John McKinnon and Gabriel Van Norden, Esqrs. Surrogate Judge, &c. Gideon White, Esq. Dep. Reg. of Deeds, &c. Colin Campbell, Esq. Col. of Impost and Excise—Yarmouth, H G Farish, Esq.—Shelburne, Colin Campbell, Esq.—Weymouth, R Hankinson, Esq. Pro Col's. of Customs—Yarmouth, J N Bond, Esq.—Shelburne, J V Buskirk, Esq.—Weymouth, R Hankinson, Esq.—Barrington, Jos Homer, Esq.—Argyle, John McKinnon, Esq. Coroner, George Bingay. Deputy Postmaster, Jacob Nelson, Esq. Shelburne.

High S
Suprer
and at A
Inferio
2d Tuesd
ern distri
Tuesday
J G M
Common
Kavanag
Jean, Esq
Esq. Syd
at Mabou
Thomas
Probate
Session
rior Cour
Justice
Arch Do
John Lea
Lawrenc
bell, Jam
B Giles,
Saml Pla
nerman,
Duffus, T
Nicholas
Tremain
Acting
lectors
Chas E
main, Es
tendent
Smith, E
Fuller, I
trict) Jo
—(south
Roads
From
I
Bedford
Rocking
Mill Inn
Fultz's,
Mitchel

for the Eastern
do. S Jones,
Jas R Lovett,
Light Duty, of
Goldsmith, Esq.

istrict, Thomas
—Western do.
ppbell, Esqrs.—
W F Bon-

2d Tuesday of

nd Argyle, sits
nd at Yarmouth
s, S S Poole, J
sh, Esqrs. M
t of Shelburne,
d the 2d Tues-
gent, J V Bus-
dep. Proth'y.

with the Infe-

os Rotulorum,
kirk, Jas Dore,
sh, Thos Crow-
landers, J Kel-
Colin Campbell,
ay, Esq C P.

District, Colin
Sargent, Esqrs.
McKinnon and
, &c. Gideon
Campbell, Esq.
sh, Esq.—Shel-
Hankison, Esq.
—Shelburne,
Esq.—Barring-
Esq. Coro-
b Nelson, Esq.

COUNTY OF CAPE-BRETON.

High Sheriff for the County, Charles R. Ward, Esq.

Supreme Court held at Sydney on the last Tuesday of Aug-
and at Arichat on the 1st Tuesday of September.

Inferior Court for the northern district sits at Sydney on the
2d Tuesday of April and the 4th Tuesday of October. South-
ern district sits at Arichat on the 4th Tuesday of April and 1st
Tuesday of October.

J G Marshall, Esq. Chief Justice of the Inferior Courts of
Common Pleas. Assistant Judges, Thos Crawley, Lawrence
Kavanagh, John Leaver, Clement Hubert, B Tupper, and J
Jean, Esqrs. Acting proth'y for the County, Chas E Leonard,
Esq. Sydney. Dep. proth'y at Arichat, Andrew Madden, Esq. ;
at Mabou, John L Tremain, Esq. Surveyor General of Lands,
Thomas Crawley, Esq. Surrogate Judge of the Court for the
Probate of Wills, Thos Crawley, Esq.

Sessions of the Peace held at the same time with the Infe-
rior Court.

Justices of the Peace.—John G Marshall, Custos Rotulorum,
Arch Dodd, Thos Crawley, Rich Gibbons, Clement Hubert,
John Leaver, Chas E Leonard, R McKinnon, Peter H Clarke,
Lawrence Kavanagh, John Jones, Chas McNab, John Camp-
bell, James Dodd, J Cameron, George S Ford, B Tupper, John
B Giles, David Taitt, John Higgins, H Ingraham, Angus Grant,
Saml Plant, Geo Cossset, W Gammel, Wm Watts, Wm Bar-
nerman, James Ball, George Brown, Andrew Madden, James
Duffus, Theophilus Greenwood, H McDonald, John McKear,
Nicholas Paint, Nicholas Martin, Thos E Chandler, John L
Tremain, J Jean, Peter De Lisle, Esqrs.

Acting Collector and Comptroller, John W Benn, Esq. Col-
lectors of Impost and Excise and of Light Duty—Sydney,
Chas E Leonard, Esq.—North Western district, John L Tre-
main, Esq.—Southern district, James Turnbull, Esq, Superin-
tendent of the Mines, Thos Crawley, Esq. Coroner, John
Smith, Esq. Postmasters, Chas M'Alpine, Esq. Sydney—John
Fuller, Esq. Arichat. Registrars of Deeds, (western dis-
trict) John L Tremain, Esq.—(eastern do) John Turnbull, Esq
—(southern do) Chas R Ward, Esq.

ooooo

Roads to the Principal Towns in the Province, with
the names of Inn-keepers.

From Halifax to	Hiltz ½ way house, 6	Montagu House,
Digby.	Fitzmaurice new	(Wallace's) 1
Bedford Inn,	3 ditto,	1½ Wilcox, Windsor, 9
Rockingham,	3 Pence's,	3½ Falmouth Bridge,
Mill Inn,	2½ M'Lellan's 30 m. 4½	Songster's, 6
Fultz's,	3 Trevoy's, Newport	Smi'h's, Harvie's, 1
Mitchell's,	3 Road,	5 Gaspereau Mar.

E

tin's, 10	Fort Cumberland, 6	Berringer's, Lunenburg, 6
Horton, Graham's, 6	Wetherhead's, 7	
Kentville—Hamilton's and Bragg's, 6	Whole distance, 132	Whole distance, 73
Sharp's, 7	From Annapolis to Shelburne, 8	From Lunenburg to Liverpool, 7
Aylesford, Crane's, 8	Clement's Church, 9	Miller's ferry, Lake have River, 7
Harris's, 1	Bear River Bridge, 8	Manning's, 7
Wilmot, Gibbon's, 12	Read's, Digby, 9	Conrod's ferry, Port Medway, 7
Leonard's, 10	Everet's, Weymouth road, 13	M'Vicar's Inn, 3
Bridgetown, 5	Cosman's, Weymouth Church, 6	Ball's Inn, Herring Cove, 8
Annapolis, Mrs Davis's, Mrs Chandler's, 15	Journie's, Scissiboo, 4	M'Lean's Liverpool, 12
Ditnas, 8	Cosman's, Clare, 4	
Bear River, Winchester's, 5	Terrian's, Montagan Cove, 15	Whole distance, 34
Digby, Ruggles', 7	Corning's, Beav. R, 14	
	1574	
To Cumberland.	Parry's, Yarmouth Lakes, 8	To Cumberland via Parrsborough, 45
Fultz's, 11½	Smith's & Richan's Yarmouth Church, 5	Windsor, 30
Fletcher's, 6	Blanvelt's, Tusket Village, 10	Parrsboro' by water, Crane's, 11
Summerfield, Shultz's, 5	Nickerson's, Apubtic River, 8	Fullerton's, 7
Hall's, 3	Spinney', Apubtic bay, 5	Macan Bridge, 7
Key's, 6	Larkin's, Pubnico, 10	Furlong's, 9
M'Keen's, 3½	Kendrick's, Barrington, 13	Pugsley's, Napan, 9
Gay's River, Corbett's, Millar's, 3	Powell's, Clyde riv, 5	Amherst, Bent's, 9
Stewiacke, Pollock's, 9½	Hargrave's, Shelburne, 16	Fort Cumberland, Wetherhead's, 7
Polly's, 3		Whole distance, 118
Clark's, 7		
Truro, Witter's, 6½	Whole distance, 162	From Halifax to Pictou.
Blanchard's, 64		Truro, Blanchard's and Witter's, 64
		Lyon's, 7
Onslow, Gourley's, 5	From Halifax to Lunenburg, 84	Archibald's, Salmon River, 8
Lower Village, Yewill's, 14	Johnson's, Hammond's plains, 4½	Stewart's, Mount Tom, 10
Foot of Cob Mountain, Clark's, 6	McLean's, Margaret's Bay, 17½	Blanchard's, West River, 3
Top of Cob Mountain, J Purdy's, 6	Crandle's, head of Chester Basin, 16	Mrs. Thane's and Mrs. Davidson's, Pictou, 10
River Philip, Hewson's, 9	Lovett's, Chester, 6	
Stewart's, 10	Zwicker's, head of Mahone Bay, 15	Whole distance, 102
Amherst, Bent's, 10		

To Pictou
quod
Dartmont
Preston, B
Putnam's
Hart's,
M'Keen's
Leckie's,
Robt Arc
Robt Geo
Heney's,
Dunbar's
E. River
W. McK
In Nova
his Ex
G. C. B
Lt. Co
Col. Cou
Lt. Col. V
Maj; Ge
Esq. Asst.
Goldsmith
Dep. Ass
Accounts
Maj. Blain
of Hospit
P. Bradle
Cochran,
Garris
Rev J T
Windso
man, Esq
Cape I
Rigby, B
New-E
Douglas,
Lt Col J
Asst Con
Asst Con
Short, Es
G Gray,
Alley, St
Prince
Governor
Lanc, T
Chaplain

ington's, Lunenburg, 6
 Whole distance, 73
 n Lunenburg to Liverpool.
 er's ferry, La-ve River, 7
 ning's, 7
 rod's ferry, 7
 t Medway, 7
 ican's Inn, 3
 s Inn, Herring 8
 ve, 8
 ean's Liverpool 2
 Whole distance, 34
 Cumberland via Farsborough. 45
 dsor, 45
 sboro' by wa-Crane's, 30
 erton's, 11
 an Bridge, 7
 along's, 7
 sley's, Napan, 9
 erst, Bent's, 9
 Cumberland, 7
 urtherhead's, 7
 Whole distance, 118
 n Halifax to Pictou.
 o, Blanchard's Witter's, 64
 s, 7
 hibald's, Sal- n River, 8
 wart's, Mount n, 10
 chard's, West er, 3
 Thane's and s. Davidson's, 10
 tou, 10
 Whole distance, 102

To Pictou via Musquodoboit.	John Fraser's, 7	Sutherland's, Merigomish, 7
Dartmouth Ferry, 14	Across the harbour to Walmsly Court House, 1	Murray's, 10
Preston, Bradley's, 6		McDonald's, Gulf Shore, 10
Putnam's farm, 5	Whole distance, 95 1/2	Mrs Simonds' and Wolmesley's, 16
Hart's, 5	Cross roads from Archibald's to Scott's 20	
M'Keen's, 11	From Halifax to Antigonishe.	Whole distance, 145
Leckie's, 13	Blanchard's, West River, Pictou, 92	The road over the Antigonishe mountains shortens the above distance about 10 miles.
Robt Archibald's, 4	Chisholm's, New Glasgow, 10	
Robt Geddes' Heney's, 4		
Dunbar's W. branch E. River, Pictou, 26		
W. McKay, 8		

—————0000—————
STAFF OF THE ARMY

In Nova Scotia and its Dependencies, under the command of his Excellency Lieutenant General Sir JAMES KEMPT, G. C. B. and G. C. H.

Lt. Col. Smith, R B. Maj. Yorke, h p. Aides de Camp; Lt. Col. Couper, mil. sec'y; Lt. Col. H. B. Harris, Dep Adj Gen; Lt. Col. W. Beresford, Dep Q M Gen.; Maj. Bazalgette, Brig. Maj; Geo Damerum, Esq Dep. Com'y Gen.; Thos L Skelton, Esq. Asst. Com'y Gen; Geo Swinney, Jas Slade, Jno Irvine, O. Goldsmith, Wm Low, — Williams and G. F. Haversaat, Esqrs Dep. Asst. Com'y Gen'ls.; A. Vieth, Esq Asst Com'y Gen. of Accounts; Alex Grant, Esq. Dep Asst Com'y Gen of Accts.; Maj. Blair, Barrack Master; A. Baxter, Esq. m. d. Dep Insp. of Hospitals; John Carter, Esq. Apothecary to the Forces; N. P. Bradley, Esq. Ordnance Surgeon; Lt. Cols. McDougall and Cochran, Insp. Field Officers of Militia.

Garrison of Halifax.—Lieut John MacColla, Town Major; Rev J T Twining, B.D. Chaplain; Robert Austin, Town Sergt.

Windsor.—Arthur McDougall, Esq. Bar. Master; J. Norman, Esq. Hosp. Asst.

Cape Breton.—Town Adj. ; Lt Samuel Rigby, Bar. Master.

New-Brunswick.—His Excellency Maj. Gen. Sir Howard Douglas, Bt. Governor; Capt C Douglas, 3 F G. Aide de Camp; Lt Col J Love, Insp. Field Officer of Militia; D Gardner, Esq Asst Com'y Gen; Chas A Clarke and H C Darling, Esqrs Dep Asst Com'y Gen'ls; John E Woolford, Dep. Bar. Master; J Q Short, Esq. Dep Insp.; Lieut Gallagher, Town Major; Rev B G Gray, St John; Rev Geo Best, Fredericton; Rev Jerome Alley, St Andrews, Chaplains.

Prince Edward Island.—His Excellency Col. J. Ready, Lt. Governor; J. F. Holland, Esq. Ordnance Storekeeper; Lieut Lane, Town Major; B. De St Croix, hosp. mate; Rev T Adia, Chaplain.

Newfoundland.—His Excellency Sir Thomas J Cochran, Governor; Ensign R Green, Fort Major; C W Beverly and Wm Stephens, Esqrs Dep Asst Com'y Gen'ls; Rev F W Carrington, Chaplain.

Bermuda.—Lt Gen Sir H Turner, K C B Governor; Lieut Goldrisk, Fort Adjt; Wm Tucker, Esq Bar. Mas.; Lt Farris, Com'g Royal Engineers; Lt Griffin, do Artillery; W Maturin, Esq Asst Com Gen; Robt Lee and Thos Stickney, Esqrs Dep. Asst Com Gen'ls; C S Doyle, Esq m v. Surgeon; Jos S Hunter, Asst Surgeon; Rev John Lough, Chaplain.

Officers of H. M. Ordnance.

John W Tapp, Esq Storekeeper. T C Ince, Dep'y Storekeeper. C H Fife, 1st clerk. J Forrester, 2d do. J E White, 3d do. W H Tapp, clerk comt. store branch. J Rigby, clerk barrack branch. C N Fife, master carpenter. J Plummer, master armorer. W Dalling, overseer of labourers. J Anderson, gate porter.

Engineer Department.

G Nicolls, col. commanding. G West, captain. H G Boldero and S H Wentworth, lieutenants. R Creed, clerk of works. J G Toler, draftsman. Wm Rogers, clerk.

Barrack Department.

J Blair, barrack master. J Farrell, 1st barrack sergt. W Little, 2d ditto.

OFFICERS OF THE ARMY.

ROYAL ARTILLERY,	52d (Oxfordshire)	John Godfree
Halifax,	LIGHT INFANTRY.	*Geo Gawler
Lt Col G Forster	"Hindoostan."	Wm Blois
Maj G Cobbe	"Vimiera."	*G H Love
Capt P Stewart, adjt	"Corunna" "Busaco"	W S Moorsom
<i>Lieutenants.</i>	"Fuentes d'Oner"	R D King
B O Lyster, qr mtr	"Ciudad Rodrigo"	Geo Montagu
J Griffith	"Badajoz"	Henry Deeds
N T Lake	"Salamanca"	<i>Lieuts.</i>
C H Mee	"Vittoria" "Nivelle"	A K Hill
J E Tapp	"Nive" "Orthes"	R Wetherall
T M Fogo	"Toulouse"	J Bentham
New Brunswick.	"Peninsula"	Wm Vivian
Capt R Molesworth	"Waterloo."	W O Gunning
Lieut H Blade	<i>Colonel.</i>	J H Baldwin
Bermuda.	Sir Geo T Walker,	Geo M Eden
Lt L E Walsh	c c n. lt. gen	G J Stewart
	Lt Col J Ferguson	H Wilson
	<i>Majors.</i>	W W J Cockcraft
ROYAL ENGINEERS.	*Jas McNair	Walter Butler
Col G Nicolls	*J Cross	<i>Ensigns.</i>
Capt G West	<i>Captains.</i>	G W Birch
<i>Lieuts.</i>	*G F B St John	— French
H G Boldero	S D Pritchard	Geo B Mathew
S H Wentworth		

GCSws
WJM
SR St
CF No
Wm Ch
E W F
*Pay JW
Adj J
Q M J
Surg. *J
A S. *V
J H
Facing
Ag. Gre
74th
"The
"Ser
"Fuer
"Ciuda
"Sa
"V
"P
"Nivel
"T
"P
*Hon S
e c b
Lt Col
David
Wm M
D J M
*G Hil
Eyre J
Fra. A
Thos
Thos
Wm V
John
J C H
B Bar
John

as J Cochran,
W Beverly and
Rev F W Car-
vernor; Lieut
as.; Lt Farris,
ry; W Matu-
Stickney, Esqrs
urgeon; Jos S
plain.

, Dep'y Store-
o. J E White,
J Rigby, clerk
J Plummer,
ers. J Ander-

in. H G Bol-
reed, clerk of
clerk.

ack sergt. W

Godfree
Gawler
Blois
Love
Moorsom
King
Montagu
y Deeds
Lieuts.
Hill
eth ralf
ntham
Vivian
Gunning
Baldwin
n Eden
Stewart
ilson
J Cockcraft
er Butler
Ensigns.
Birch
rench
B Mathew

G C Swan
W J M Hughes
S R Streetfield
C F Norton
W m Chaloner
E W Forester
*Pay J Winterbottom
Adj't J Bentham, lt
Q M. J Morgan
Surg. *J B Gibson
A S. *W Macartney
— J Paterson
*Facings, buff—Lace,
silver.*

Ag. Greenwood & Co

74th REGIMENT.

"The Elephant"
"Assaye"
"Seringapatam"
"Busaco"
"Fuentes d'Onor"
"Ciudad" "Rodrigo"
"Badajoz"
"Salamanca"
"Vittoria"
"Pyrenées"
"Nivelle" "Orthes"
"Toulouse"
"Peninsula."
Colonel.

*Hon Sir C Colville,
g c b & g c h. l g
Lt Col Jno A Mien
Majors.
David Stewart
Wm Moore
Captains.

D J MacQueen
*G Hillier
Eyre J Crabbe
Fra. Ansell
Thos Jones
Thos Mannin
Wm W Crawley
John Hassard
J C Harold
B Barnett
Lieuts.

John Alves, dep pm

Chas King
Wm Graham
A Atkinson
Robt Barker
T W Yates
J Campbell
L McPherson
Geo Gore
C A Vallancey
Joseph Crips
Aug F Ansell
Annesley Eyre
Ensigns.

Lake Allen
C F Colyear
K A de Koven
H C Pocock
Chas Purcell
Jas Stewart
Edw Clarges
Pay. R Davies
Adj. A F Ansell, lt
Q M. Don Fraser
Surg. C Grant
A S. R Ranken
— *T Brisbane, m d.
*Facings, white—lace,
gold.*
Ag. Hopkinsons

RIFLE BRIGADE.

"Copenhagen"
"Monte Video"
"Roleia" "Vimiera"
"Corunna" "Busaco"
"Barrosa"
"Fuentes d'Onor"
"Badajoz"
"Salamanca"
"Vittoria" "Nivelle"
"Nive" "Orthes"
"Toulouse"
"Peninsula"
"Waterloo"
Colonel in Chief.
* Arthur, Duke of
Wellington, k g g.
c b, & g c h. fld mar
Col. com'g.

Hon Sir W Stewart,

g c b. l g
Lt. Cols.
*Amos Godsil
Robt Norcott, c. & n
Majors.
*J Fullarton, l c. c b
*W Eeles
Captains.

*H G Smith, l c. c b
*W Johnston
A W Pemberton
*John Cox
*A Stewart
*J C Hope
*J Molloy
C Ricketts
Thos E Kelly
F H Byrne
1st Lieuts.

*J Kincaid
*G Simmons
*John Fry
Geo B Mathew
W Warren
A MacLachlan
W S R Norcott, adj
Jas Maister
H Stewart
J S Cameron
2d Lieuts.

Chas F Napier
Robt Walpole
W S Tollemache
Roy Jones
Jas Dolphin
— Smith
Jos Benyon
J B Williams
John Rooper
Wm Cumine
Jas Martin
Pay. W Holden, capt
Adj. W S R Norcott, lt
Q M. W Surtees
Surg. *J Burke, m d
A S. *J Armstrong,,
Regimentals, green—
facings, black.

Ag. Greenwood & Co

This mark (*) prefixed to the names, denote their having been at Waterloo.

The words subscribed to the titles of Regiments, as "Peninsula," "Waterloo," &c. denote the honorary distinctions permitted to be borne on their colours and appointments, in commemoration of their services.

Officers of His Majesty's Ships.

WILLOUGHBY T. LAKE, Esq. C. B. Rear Admiral of the Red, Commander in Chief of his Majesty's Ships and vessels employed, and to be employed, at Halifax, or the Coast of North America, &c. &c.

JUPITER, 60.—Rear Admiral Lake, C. B. Captain, Wm Webb, Esq. Secretary, J B Hutchings, Esq. Lieuts. Edw. Plaggenborg, Stewart N Inglis, Willoughby Lake (F.L), Mereton, and F H Anson. Captain Marines, T Hurdle. 2d Lieut. George Victor. Master, Jas Wood. Surgeon, Ham. Baillie. Sup. Wm B Webster. Asst. Thos R Dunn. Sup. Wm Doak and Geo Seeds. Chaplain, Rev C B Rosenberg. Purser, Wm A Davies.

NIEMEN, 28.—Captain, Wm Pitt Canning, Esq. Lieuts. And. Kennedy, Wm H Molyneux and Thos Cole. Master, Jas Hardie. Surgeon, Henry Towsey. Asst. Wm Peatie. Purser, Alex Penprase.

GRASSHOPPER, 18.—Captain, Courtney E W Boyle, Esq. Lieuts. Hon Francis Maude and Robt J Langrishe. Master, A B McLean. Surgeon, Campbell France. Asst. Mr Fox. Purser, Wm Crane.

DOTEREL, 18.—Captain, W A Hamilton, Esq. Lieuts. Samuel Ramsey and Arch. Sinclair. Master, A M P Mackey. Surgeon, Robt Marshall. Asst. W E Watson. Purser, T G McMurray.

ORESTES, 18.—Captain, John Jones, Esq. Lieuts. J B Whitelocke & Wm Dickey. Master, J Hoffmaster. Surgeon, Wm Anderson. Asst. C D Henderson. Purser, Thos Nisbatt.

CONTEST, 12.—Lt. Chas English. Master, A W Baxter. Asst. Surg. James Smeaton.

MILITIA OF NOVA-SCOTIA.

His Excellency Lieut. General Sir JAMES KEMPT, G. C. B. Commander in Chief.

Lieut. Colonels, Hon. T. N. Jeffery, Sir Rupert D. George, Bt. Aides de Camp to the Commander in Chief.

Lieut. Colonels Duncan McDougall, William Cochran, Inspecting Field Officers.

Adjt. General, Lieut. Col. John MacColla. Qr. Mr. General, Lt. Col. John George Pyke. Surgeon Genl.

Judge Advocate General, Hon. S. B. Robble.

1st V
Alexand
well.
2d V
Lieuts.
der Far

Lt. C
Hon TN
Maj
John Alb
G N Ru
Capt
Edw Pry
J Dempo
ARichar
Jas McI
W A Bl

Lt.
J N Shu
Maj
Saml Gu
Capt
Chas J F

Lt C
John Str
Maj
Saml Al
J D Hav
Capt
Geo Tay
Jas Lyo
J L Star
John Fai
P. McNe
Edw. Cu
H. Y. Mo

1st B
Lt.
James K
Maj
A L Ar
Capt

Militia Artillery.

1st Volunteer Company—Major, Richard Tremain. Captain, Alexander May. 1st Lieuts. Richard Scott and James Cogswell. 2d Lieut. Joshua Lee.

2d Volunteer Company—Captain, James Tremain. 1st Lieuts. John Morris and William Foster. 2d Lieut. Alexander Farquharson. Surgeon, Mathias Hoffman.

1st Halifax Regiment.

<i>Lt. Col.</i>	Wm Salter	J Dauphney	Steph. Binney
Hon TN Jeffery	John Albro, jr	Wm Donaldson	Thos Pyke
<i>Majors.</i>	Edw Pryor, jr	R G Morse	J C Hume
John Albro	<i>1st Lieuts.</i>	Thos Lydiard	A McDonald
G N Russell	Wm Pryor	Chas De Wolfe	J H Noonan
<i>Captains.</i>	John Parker	J W Madden	A W Fleiger
Edw Pryor	John Slayter		<i>Adj</i> A Richard-
J Dempster	Rich Bulger	<i>2d Lieuts.</i>	son, capt
A Richardson, a	Jas Black	Law Doyle	Q M
Jas McNab	Wm M Allen	Hen Cunard	Sg A Wallace.
W A Black	Jas G Boggs	E Dewolf	

2d Halifax Regiment.

<i>Lt. Col.</i>	W M DeBlois	A G Fraser	J H Clark
J N Shannon	J A Barry, adj	T B Tremain	John E Starr
<i>Major</i>	G B Creighton	<i>1st Lieuts.</i>	<i>Adj</i> J A Barry,
Saml Cunard	Dun McQueen	M Tobin	capt
<i>Captains.</i>	Jas Mitchiell	Thos Tobin	Q M J Dupuy
Chas J Hill	C D Archibald	M Tobin, 2d	Sg W B Almon

3d Halifax Regiment.

<i>Lt Col.</i>	S W Albro	G Glawson	W Anderson
John Starr	Geo Hawbolt	R Allen	G Glawson, jr
<i>Majors.</i>	A Taylor	C Marks	J Kennedy
Saml Albro	<i>1st Lieuts.</i>	E Greenwood	J Brown
J D Hawthorn	P Ogilvie	<i>2d Lieuts.</i>	R A Logan
<i>Captains.</i>	Thos Cunard	G Taylor	B G G Potts
Geo Taylor	Thos Grassie	S Breedin	<i>Adj</i> J L Starr,
Jas Lyons	A Dunbrack	Daniel Starr	capt
J L Starr, adj	Edw Low	W J Starr	Q Mr C H Bel-
John Fairbanks	J Allen	Wm Albro	cher
P McNab	S Chamberlain	John Harvie	Sg S Head, 1st
Edw Cunard	J Chamberlain	R D Clarke	<i>As do</i> C Head
H Y Mott	W Hall	John Leslie	

Colchester Regiments.

<i>1st BATT.</i>	Jas Phillips	W C Eaton, adj	Jas Dunlap
<i>Lt. Col.</i>	Wm Ruthford	Jas Yuill	S Archibald, 2d
James Kent	Wm Pollock	<i>1st Lieuts.</i>	John Watson
<i>Major.</i>	Jas D Blair	Wm Phillips	Wm Logan
A L Archibald	Josh Fulton	Jas Rutherford	Wm Blair, 3d
<i>Captains.</i>	Jno Gammill	George Logan	Andw Yuill

<i>2d Lieuts.</i>	Sg D B Lynds	John Crow	Alex Blair
Alex Kent	2d BATT.	R McLelland	Thos Corbett
Geo Lynch	<i>Lt Col.</i>	<i>1st Lieuts.</i>	Saml Waugh
J L Fisher	Robt Dickson	R Spencer	W H Wilson
T Putnam	<i>Major.</i>	R Flemming	M Waugh
Wm McCulley	Thos P Brown	Rufus McNut	Edw Langeal
A Knight	<i>Captains.</i>	John Sturt	<i>Adj Eli. DeW.</i>
Jno Gammill, jr	Jas Dickson	D Dower	Dixon
Robt Kent	J Flemming	Wm Baxter	Q M W Cutten
<i>Adj W C Eaton,</i>	Jas Graham	<i>2d Lieuts.</i>	Sg W Gregor
capt	J McR. Wisor	Jas Urquhart	
Q M B Pearson	A Campbell	D V Crow	

Pictou Regiments.

<i>1st BATT.</i>	Anth'y Smith	<i>Lt Col.</i>	D McLennan
<i>Lt Col.</i>	David Davidson	Jas Skinner	Simon McKay
Geo Smith	Saml Archibald	<i>Major.</i>	Simon Fraser
<i>Major.</i>	Jas Perang	J McDonald	A McDonald
Robt McKay	<i>2d Lieuts.</i>	<i>Captains.</i>	Alex Fraser
<i>Captains.</i>	John Taylor	Robt Smith	Wm Fraser
John Douglas	Alex Scott	Don Fraser	T McPherson
Geo McDonald	Wm Clock	D Murray	Alex Grant
A Patterson	Thos M Cole	J Carmichael	<i>2d Lieuts.</i>
Jno Patterson	Jas Dawson	A Chisholm	Jacob Olding
Wm Corbett	David Ross	John Olding	Thos Munro
Jno Gordon	Jas McGill	Alex Grant	M McKenzie
R Patterson	R McDonald	D Cameron	Wm Chisholm
Wm Mortimer	Don Fraser	Rod'k McKay	Jno Holmes, adj
D Camron	M McCulloch	D McDonald	D Robertson
<i>1st Lieuts.</i>	<i>Adj</i>	Jno Finlayson	Robt Walker
W Rankine	Q m H Hutton	<i>1st Lieuts.</i>	<i>Adj J Holmes, lt</i>
A Patterson	Sg G Johnstone	Jno Smith	Q m A Fraser
Geo Campbell	2d BATT.	D McDonald	Sg D Finlayson

County of Sydney Regiments.

<i>1st BATT.</i>	R Murray	<i>2d lieuts.</i>	Sg A McDon-
<i>Lt Col.</i>	D McDonald	J W Forrestall	ald
Jos Marshall	Jos Jervise	artil'y	2d BATT.
<i>Majors.</i>		H McLennan	<i>Lt Col.</i>
Geo Irish	<i>1st lieuts.</i>	Wm Hierlihy	R M Cutler
John Munro	Al. McDonald,	Love Irish	<i>Major.</i>
<i>Captains.</i>	artil'y	Jas Taylor	
R N Henry, ar-	E Cunningham	A M Chisholm	<i>Captains.</i>
tillery	A McDonald	S McDonald	A Atwater
D McQueen	Jas Randall	D McDonald	Jas Lyle
Don McNiel	A Chisholm	A Kennedy	F Cook
W H Irish	An. McDonald	D Dorley	C Archibald
Jos Symonds	S McDonald	<i>Adj J McDonald</i>	Isaac Wyld
J G Peabody	Luke Jervise	Q m r D Har-	Chas Ehler
J Cunningham	J McMullins	rington	Saml McKeen

Jno Grant
1st lie
 Thos Pe
 Edw Mo
 Wm Sho
 Alex Ma
 D Atwat

1st B
lt. c
 W H Sh
majo
 Ter. Coc
captan
 Nat. Jen
 Anthv S
 John Eld
 E Sandfo
 Danl Wi
 Danl Lo
 Wm S C
 John Ma
 Jas Smit
1st lie
 R McHa
 F Parke
 M Wrig

1st B
lt. c
 H Gisner
majo
 Wm C M
capta
 J Wells
 W Chip
 D Cogsv
 J Morto
 J Crane
 J Nesbit
 A Beck
 F Tuppe
 Wm Bor
 Jos Jack
1st li
 T Barna
 J H Gis

Alex Blair
Thos Corbett
Saml Waugh
V H Wilson
W H Waugh
Edw Langeal
Adj Eli. DeW.
Dixon
Q M W Cutten
Sg W Gregor

Jno Grant
1st lieuts.
Thos Peart
Edw Morris
Wm Shopel
Alex Martin
D Atwater

Jas Tory, jr
Wm Bedford
Wm McKean
H McDonald
Jno G Peart
Jos Maxwell
Jno Foster

M Taylor
Wm Sinclair
2d lieuts.
Wm Lawson
D Martin, jr
W O Heffernan
Jas Kerry

J Jamieson, jr
John Mitchell
J McIntosh
A McPherson
Adj Robt Boles
Q m
Sg W Cantril

County of Hants Regiments.

1st BATT.
lt. col.
W H Shey
major.

Ter. Cochran
captains.

Nat. Jenkins
Anthv Shaw
John Elder
E Sandford
Danl Wier
Danl Lockhart
Wm S Church
John Manning
Jas Smith

1st lieuts.
R McHaffey
F Parker
M Wright

D Mosher
Elias Payzant
Jacob Anthony
J Dimock

J Cochran
J M Smith

2d lieuts.
J Henderson
T McLatchy
F Cochran
Jos Northrup
G Brightman
Jas Sterlin
A Harvie
Wm Wier

Geo Hunter
R McHefey
P Walker
C Curren

Thos Aline
Adj J Songster
Q m T O'Brien
Sg Jos Wiley

2d BATT.
lt. col.

Rich Smith
major.
Wm Scott
captains.
J McLehlan
Benj Smith
Thos E.
Wm O'Brien
J Withrow

C Putnam
1st lieuts.
J Woodworth
J Densmore

John Grant
Alex McPhee
Thos Wallace
John Sterling

2d lieuts.

Don Grant
Jno Densmore
Saml Meek
Alex Ferguson
J Withrow
Edw Murphy
John Wallace
D Ettengen
John McPhee

Arch Cox
Adj B Smith
Q m M Casey
Sg F G Pike

D McLennan
Simon McKay
Simon Fraser
A McDonald
Alex Fraser
Wm Fraser
T McPherson
Alex Grant
2d Lieuts.
Jacob Olding
Thos Munro
M McKenzie
Wm Chisholm
Jno Holmes, adj
D Robertson
Robt Walker

Adj J Holmes, lt
Q m A Fraser
Sg D Finlayson

Sg A McDon-
ald

2d BATT.
Lt Col.
R M Cutler
Major.

Captains.
A Atwater
Jas Lyle
F Cook
C Archibald
Isaac Wyldo
Chas Ehler
Saml McKeen

King's County Regiments.

1st BATT.
lt. col.

H Gisner
major.

Wm C Moore
captains.

J Wells
W Chipman
D Cogswell
J Morton
J Crane
J Nesbit
A Beckwith, adj
F Tupper
Wm Borden
Jos Jackson

1st lieuts.
T Barnaby
J H Gisner

N Woodworth
J Newcomb

J H Chipman
Jona Crane

L V Buskirk
E M Terry

J T Allison
John Belcher
Elias Calkin

W C Campbell
O Cogswell
Judah Wells

A Gisner
J C Magee
Wm Pearce

R M A Moore
D Burbidge
2d lieuts.
Saml Sharpe

Wm Starr
John Prescott

W H Allison
Jer Tupper

E Burbidge
Wm Hare

Thos Welton
Gibs Gisner

B Donaldson
T B Campbell

Adj A Beckwith
capt

Q m H Chipman
Sg W Baxter

2d BATT.
lt. col.

S Dennison
major.
E Woodworth

captains.

J N Crane
Chas Brown

Simon Fitch
J Graham

Eben Bishop
Enoch Forsyth

1st lieuts.
J Fuller

S L Allison
J Johnston

Elijah Fowler
D Rathburn

E Forsyth
B Davidson

2d lieuts.
C Randall

S Avery, jun
C H Rand

T Parminster	G A Lockhart	Jas Bragg	Q m J DHarris
P M Benjamin	O Hamilton	Adj J M Terry	Sg I Webster

East Annapolis County Regiments.

1st BATT.	Robt Spurr	2d BATT.	C Prince
<i>lt. col.</i>	Wm Harris	<i>lt. col.</i>	Jno Dodge
Thos Ritchie	2d lieuts	B R Beardsley	Alex Fowler
<i>captains.</i>	S Thorne	<i>major.</i>	Jno Feritzs
D Morse	H Gates	C Benson	Jas Gates
J Bath	L Bogart	<i>captains.</i>	2d lieuts.
E Thorne	A Fowler	J Whitman	J Sanders
T Ruggles	S Parker	S Starritt	C Marshall
Jas Ried	Geo Vroom	E Cleaveland	Wm Banks
Wm Davis	G Winniett	C Shafner	Geo Fitch
J Robertson	H Gisner	Foster Bolso	Guy Morton
S Cowling	S Chipman	Jas Lynain	Chr Banks
<i>1st lieuts.</i>	J H Ditmas	E Phinney	Zeb Phinney
S McCormeck	Wiston Hall	Arch Hicks	Adj R Stone
A Troop	J Robertson	<i>1st lieuts.</i>	Q m F Smith
E Whitman	Adj	J Armstrong	Sg J V Buskirk
Wm Sanders	Q m	S Leonard	
Jacob Bogart	Sg	H Parker	

West Annapolis County Regiments.

1st BATT.	J McConnell	Sg J R Light	Jos Commo
<i>lt. col.</i>	J E Morton	foot	Geo Taylor
W F Bonnell	B McConnell	2d BATT.	Jno Holdon
<i>major.</i>	G N Nicholls	<i>lt. col.</i>	J Porter
Wm Muir	Jno Ward	Saml Doucott	2d lieuts.
<i>captains.</i>	2d lieuts.	<i>major.</i>	John Ban
Wm Bailey	E Payson	F Commo	F Burnis
Jno Cassman	R L Grig	<i>captains.</i>	J Perry
R Turnbull	H Stewart	H Barr	Benj White
T W Ruggles	J S Everitt	Saml White	B Robichau
D Rutherford	Chas Budd	S Campbell	Adj H Barr, capt
J A Timpany	Chas Tucker	Jos Davis	Q m H Barr, jr
Edw Morgan	Jonas Keen	F A Robichau	
<i>1st lieuts.</i>	Adj J E Morton	<i>1st lieuts.</i>	
M Haycock	Q m W Taylor	Jos White	

Shelburne Regiments.

1st BATT.	J D White	<i>2d lieuts.</i>	Q m J Tottis
<i>lt. col.</i>		Rich King	2d BATT.
J B Buskirk	<i>1st lieuts.</i>	D Matthews	<i>lt. col.</i>
<i>captains.</i>	John King	Wm McAlpine	Abram Lent
Benj Perry	Saml Lock	Jas Griffin	<i>major.</i>
John Lock	C Campbell, jr	Geo Boole	J McKinnon
Wm Holden	Wm McMillan	Wm Muir	<i>captains.</i>
Jas Barclay	Thos Johnston	Adj J B Ens	Jas Hatfield
P Spearsoater	Jas Bingay	<i>low, capt</i>	A Bodrean

W White
J D Entr
Wm Spi
Jas Sine
M Amer
1st lie
John W
Dom Bo
Paul F S
H Frost
J Wetfie
S D Entr
P D Entr
2d lie
C Porter
S Porter
C Blanche
G Van B
M Jenner
J Spinne
W Lark
Ad D Va
den, e

lt. co
Jos Free
majo
Jas R D
J Whitm
capta
John Ro
J Dewell
D McDo
Steph Co
W Freer
Jas Mort
Jno Cam

1st B
lt. co
J C Rud
majo
Garret M
Wm Ru
capta
M Moran
Jno Zwi
Casper

Q m J D Harris
 Sg I Webster
 nts.
 C Prince
 Ino Dodge
 Alex Fowler
 Ino Feritz
 Jas Gates
 2d lieuts.
 Sanders
 C Marshall
 Wm Banks
 Geo Fitch
 Guy Morton
 Chr Banks
 Zeb Phinney
 Adj R Stone
 Q m F Smith
 Sg J V Buskirk

nts.
 Jos Commo
 Geo Taylor
 Ino Holdon
 J Porter
 2d lieuts.
 John Ban
 F Burnis
 J Perra
 Benj White
 B Robichau
 Adj H Barr, capt
 Q m H Barr, jr

Q m J Tottle
 2d BATT.
 lt. col.
 Abram Lent
 major.
 McKinnon
 captains.
 Jas Hatfield
 A Bodrean

W Whitehouse
 J D'Entremont
 Wm Spinney
 Jas Sineau
 M Amero
 1st lieuts.
 John Williams
 Dom Bodreau
 Paul F Smith
 H Frost
 J Wetfield
 S D'Entremont
 P D'Entremont
 2d lieuts.
 C Porter
 S Porter, jr
 C Blanvett
 G Van Buskirk
 M Jeffery
 J Spinney
 W Larkin
 Ad D Van Nor-
 den, capt

lt. col.
 Jos Freeman
 majors.
 Jas R Dewolf
 J Whitman
 captains.
 John Roberts
 J Dewolf
 D McDonald
 Steph Collins
 W Freeman, ad
 Jas Morton
 Ino Campbeil

1st BATT.
 lt. col.
 J C Rudolf
 majors.
 Garret Miller
 Wm Rudolf
 captains.
 M Morash
 Ino Zwicker
 Casper Finner

Q m Jas Lent
 3d BATT.
 lt. col.
 Jno Birgay
 major.
 G B V Norden
 captains.
 Geo Bingay, adj
 Jas B Dunn
 Jas Starr
 Israel Kelly
 Jno Cook
 Benj Lewis
 M Killum
 D Pattin
 1st lieuts.
 Thos Tooker
 T Shaw
 A Huntingdon
 T Atley
 R Robins
 Jos B Whipple
 Jno Pattin

1st lieut.
 F Tupper
 T Freeman
 N Freeman
 Wm Irwin
 J L Darrow
 R McClearn
 John McViker
 Sam Freeman
 Thos Calkin
 Wm McGill
 Z Freeman
 S Freeman

Lunenburg County Regiments
 C Oxner
 Ino Anderson
 H Kaulback
 C S Rudolf
 E Oxner
 P Arrenburg
 1st lieuts.
 P W James
 P Mason
 Jos Falt

Moses Shaw
 2d lieuts.
 Chas Lewis
 B Harding
 E B Moody
 Jas Allen
 Jacob Hilton
 D Gower
 Saml Ring
 Geo Bond
 Z Churchill
 John Cann
 A Raymond
 J Crosby
 H Huntingdon
 Ad G Bingay,
 capt
 Q m J Tooker
 Sg H G Parish
 4th BATT.
 lt. col.
 W B Sargeant

Queen's County Regiment.
 Stephen Mack
 Geo Pearson
 N McIntosh
 Jno Fraser
 2d lieuts.
 John Cobb
 Josh Ford
 Geo Freeman
 Jno McDonald
 A McDonald
 Geo Freeman
 Robt Darrow
 Jno Freeman

Geo Anderson
 Mich Rudolf
 J G Boehner
 Geo Creighton
 F S Rudolf
 Wm Drew
 Thos Boenner
 2d lieuts.
 Chas Born
 M Ernst

captains.
 J P Doane
 David Swaine
 J Sargeant, adj
 Jas Smith
 Ino Osborne
 1st lieuts.
 G Kenney
 Saml Reynolds
 E Knowles, jr
 Jethro Covell
 Joshua Atwood
 2d lieuts.
 Thos Coffin
 K Reynolds
 J C Crowell
 Jas Kenney
 Jno Crowell
 Adj J Sargeant
 capt
 Q m S D Doane
 Sg Jno Fox

Elk Knowles
 Jas Taylor
 Hen Godfrey
 H Hopkins
 Ino Kempton
 Ad W Freeman
 capt
 Q m John H De
 waal
 Sg A Webster
 As do D Grieve

M Oxner, jun
 Recommended
 for 2d lieuts.
 J P Miller
 Jno Harley
 Philip Mason
 Jos Rudolf
 John Webb
 Mich Faney
 Ad J Solomon

Q. mr.
 G Jacobs
 2d Capt.
 Lt. col.
 Jno Heckman
 majors.
 John Evans
 J Creighton
 captains.
 Geo Burgoyne

C Ernst
 Jas Walker
 Jno Hiltz
 Jno Hunt
 P Sturs
 Geo Langille
 Thos Zwicker
 1st lieuts.
 Jno Zwicker
 Robt Mooney

C M
 Jno Crandle
 L Hurtle
 John Nans
 Jos Gates
 2d lieut.
 Geo Zwicker
 A Lantz
 M Publicover
 Jos Lordley

F Hiltz
 Jos Dimmock
 A Zwicker
 L G Gildert
 Edw Zwicker
 Ad H Ernst
 Q. mr. J B Co-
 mingo
 Sg. Jno Harley

Cumberland Regiment

lt. col.
 Hen Purdy
 major.
 Thos Roach
 captains.
 And Forshner
 Wm Chapman
 T Chapman adj
 Geo King

R. M G Dickey
 1st lieuts.
 D King
 H Purdy
 J R Black
 J R Huestis
 S Pruchton
 Jas Roberts
 Saml Purdy

J Lewis
 G Lawrence
 R Commo
 Thos Logan
 2d lieuts.
 B Chapman
 Jos Morse
 A Brown Pipes
 Anthy Taylor

W M Nab
 B Stevens
 Joshua Bebu
 Amos Eaton
 Ad T Chapman
 capt.
 Sg. L Purdy

Parrsborough Corps.

lt. col.
 Jas Ratchford
 captains.
 Edw Crane
 J. Ratchford, jr
 adj

Jesse Lewis
 Oman Lewis
 1st lieuts.
 A Thompson
 B Fullerton
 Wm Marsh

W E Crane
 2d lieuts.
 W Spratt
 Eben Kerr
 Robt Lewis
 Edw Morrison

Ad J Ratchford
 jun
 Q. mr Jno Ful-
 more, jun.

The Packet leaves Digby for St. John, N. B. every Thursday evening, arrives there the next morning; leaves St. John on Saturday at 12 o'clock and arrives at Digby the next morning.

OMISSION.—Charles Owen, Esq. Attorney at Law, Lunenburg.

C. H. BELCHER,

HAS constantly for sale, STATIONARY of every description; School Books, Bibles, Psalm Books, &c. &c. at his store, opposite the north east corner of the Province Building.
 Halifax, November 21, 1826.

F. Hiltz
Jos. Dimmock
A. Zwicker
L. G. Gildert
Edw. Zwicker
Ad. H. Ernst
Q. Mr. J. B. Co-
mingo
Sg. Jno. Harley

W. M. Nab
B. Stevens
Joshua Bebu
Amos Eaton
Ad. T. Chapman
capt.
Sg. E. Purdy

Ad. J. Patchford
jun.
Q. Mr. Jno. Ful-
more, jun.

N. B. every
ext. morning;
k. and arrives

at Law, Lunen-

ery description;
k. at his store,
Building

